

---

INFECTIOUS DISEASES WEEKLY REPORT

# TOKYO IDWR

Tokyo Metropolitan Infectious Disease Surveillance Center

---

## 31 July 2014 / Number 30

### Surveillance System in Tokyo, Japan

The infectious diseases which all physicians must report

All physicians must report to health centers the incidence of the diseases which are shown at page one. Health centers electronically report the individual cases to Tokyo Metropolitan Infectious Disease Surveillance Center.

The infectious diseases required to be reported by the sentinels

The numbers of patients who visit the sentinel clinics or hospitals during a week are reported to health centers in Tokyo. And they electronically report the numbers to Tokyo Metropolitan Infectious Disease Surveillance Center. We have about 500 sentinel clinics and hospitals in Tokyo.

1st Week is early January and 52nd Week is end of December.

Tokyo Metropolitan Institute of Public Health

TEL:81-3-3363-3213 FAX:81-3-5332-7365

e-mail:[idsc@tokyo-eiken.go.jp](mailto:idsc@tokyo-eiken.go.jp)

URL:[idsc.tokyo-eiken.go.jp/](http://idsc.tokyo-eiken.go.jp/)

---

## Number of patients with the diseases which all physicians must report

Category	Diseases	Tokyo					Japan	
		27th	28th	29th	30th	Cum 2014	30th	Cum 2014
I	Ebola hemorrhagic fever							
	Crimean-Congo hemorrhagic fever							
	Smallpox							
	South American hemorrhagic fever							
	Plague							
	Marburg disease							
	Lassa fever							
II	Acute poliomyelitis							
	Tuberculosis	93	100	92	67	2,239	340	14,338
	Diphtheria							
	Severe Acute Respiratory Syndrome(SARS)							
	Avian influenza H5N1							
※	Middle East Respiratory Syndrome (MERS)							
	Avian influenza H7N9							
III	Cholera				1	3	1	3
	Shigellosis	1	3		1	23	2	56
	Enterohemorrhagic Escherichia coli infection	23	25	12	10	176	163	1,570
	Typhoid fever					10		23
	Paratyphoid fever			2		5		10
IV	Hepatitis E			2		18	1	89
	West Nile fever							
	Hepatitis A					26	1	378
	Echinococcosis							8
	Yellow fever							
	Psittacosis					2		6
	Omsk hemorrhagic fever							
	Relapsing fever							1
	Kyasanur forest disease							
	Q fever							1
	Rabies							
	Coccidioidomycosis							1
	Monkeypox							
	Severe Fever with Thrombocytopenia Syndrome							34
	Hemorrhagic fever with renal syndrome							
	Western equine encephalitis							
	Tick-borne encephalitis							
	Anthrax							
	Chikungunya fever					2	1	7
	Scrub typhus(Tsutsugamushi disease)		1			5	1	108
	Dengue fever	1	1		2	30	2	91
	Eastern equine encephalitis							
	Avian influenza (excluding H5N1 and H7N9)							
	Nipah virus infection							
	Japanese spotted fever						3	79
	Japanese encephalitis							
	Hantavirus pulmonary syndrome							
	Herpes B virus infection							
	Glanders							
	Brucellosis			1		3		7
	Venezuelan equine encephalitis							
	Hendra virus infection							
	Epidemic typhus							
	Botulism							1
	Malaria	2	1			14	1	32
	Tularemia							
	Lyme disease						1	6
Lyssavirus infection(excluding rabies)								
Rift valley fever								
Melioidosis								
Legionellosis	2	1	3	1	58	26	640	
Leptospirosis					1		7	
Rocky mountain spotted fever								

Category	Diseases	Tokyo				Japan		
		27th	28th	29th	30th	Cum 2014	30th	Cum 2014
V	Amebiasis	4	4	5	4	119	11	627
	Viral hepatitis(excluding hepatitis A and E)	4			1	31	5	148
	Acute encephalitis(excluding JE and WNE)	3	1	1	1	26	2	275
	Cryptosporidiosis	63	5	1		74		80
	Creutzfeldt-Jakob disease	1		1	1	7	1	92
	Severe invasive streptococcal infections(TSLS)	1		3		32	3	150
	Acquired immunodeficiency syndrome (AIDS)	18	16	10	10	295	16	857
	Giardiasis			1		9	1	37
	Invasive <i>Haemophilus influenzae</i> disease	1	1			16		118
	Invasive meningococcal disease					4	1	22
	Invasive pneumococcal disease	2	4	3		145	8	1,159
	Congenital rubella syndrome					3		8
	Syphilis	15	13	6	11	280	28	888
	Tetanus				2	8	3	73
	Vancomycin-resistant <i>S. aureus</i> infection							
	Vancomycin-resistant Enterococcus infection					3		31
	Rubella	3	1	2	1	70	2	253
Measles	1		1	1	85		418	

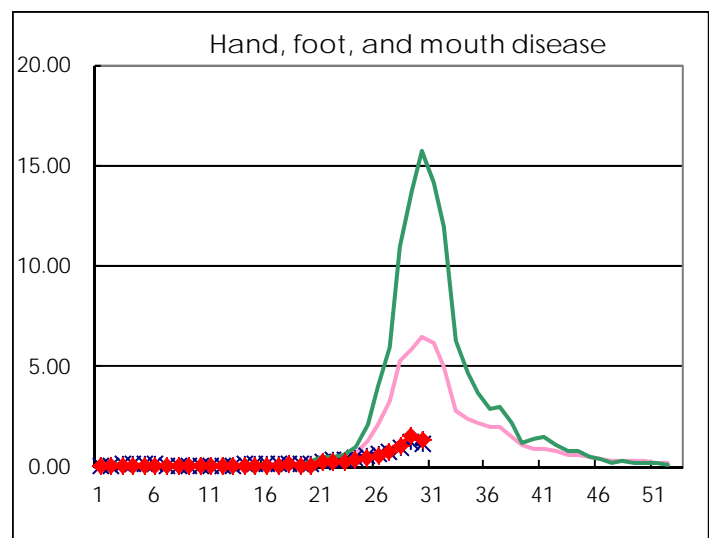
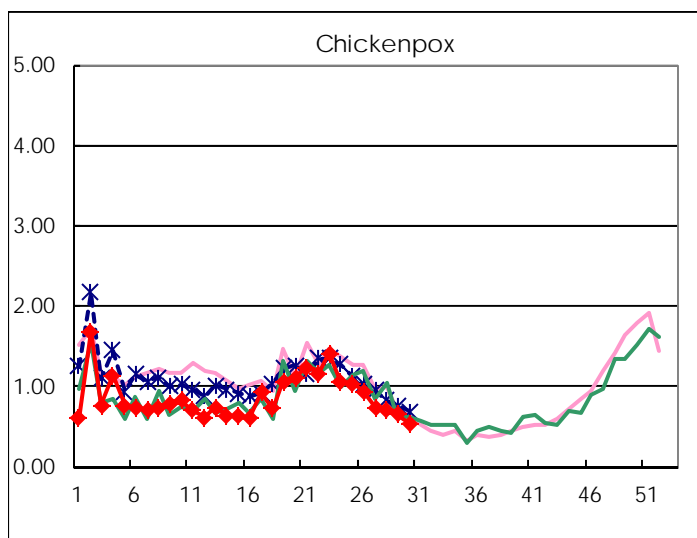
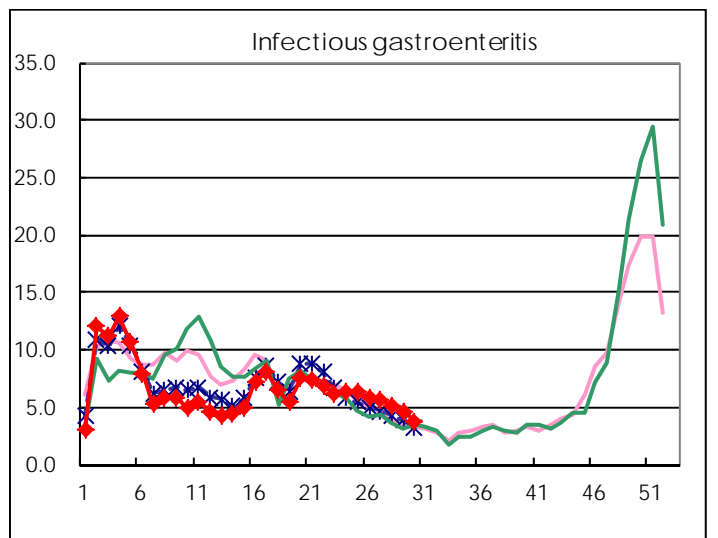
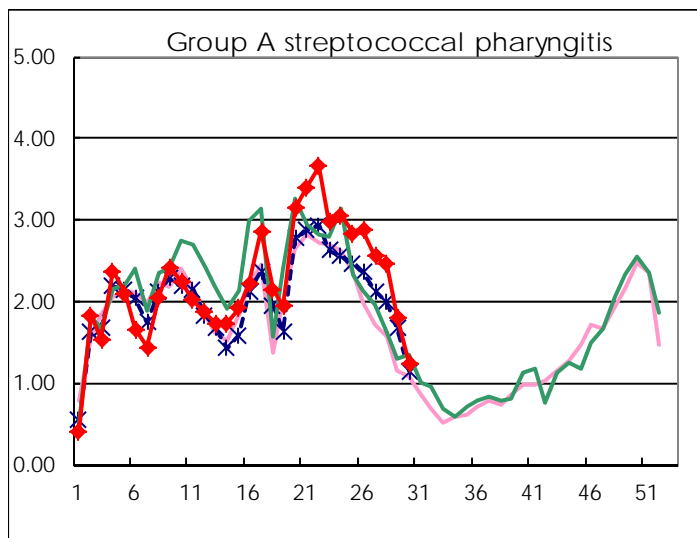
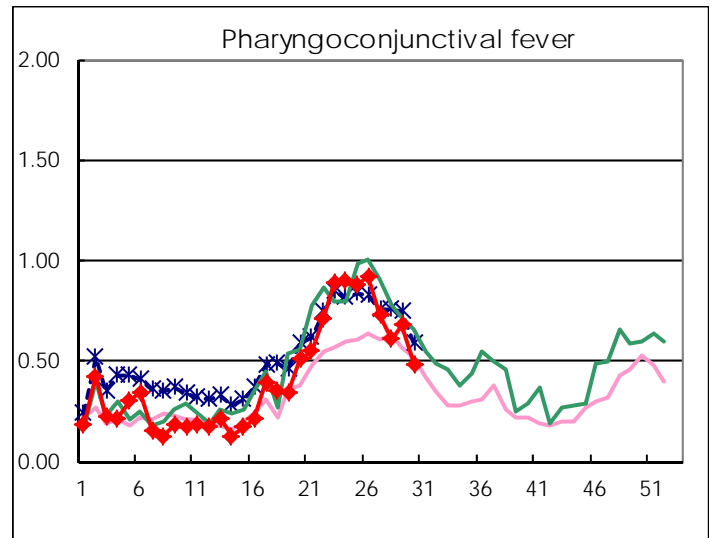
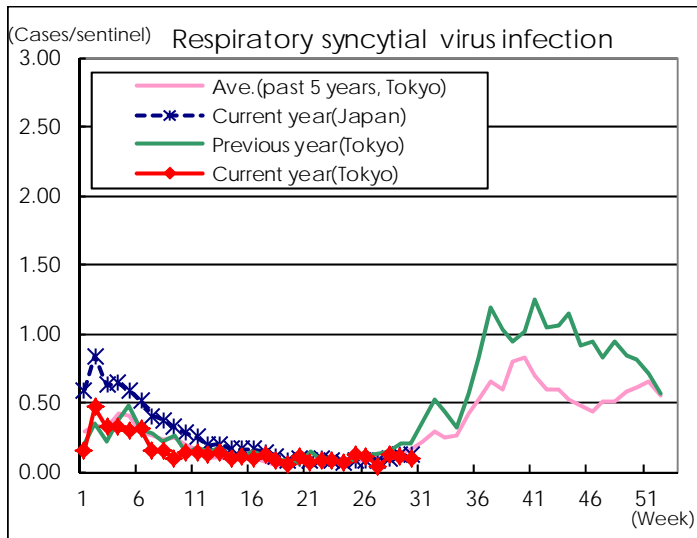
※ Designated infectious disease

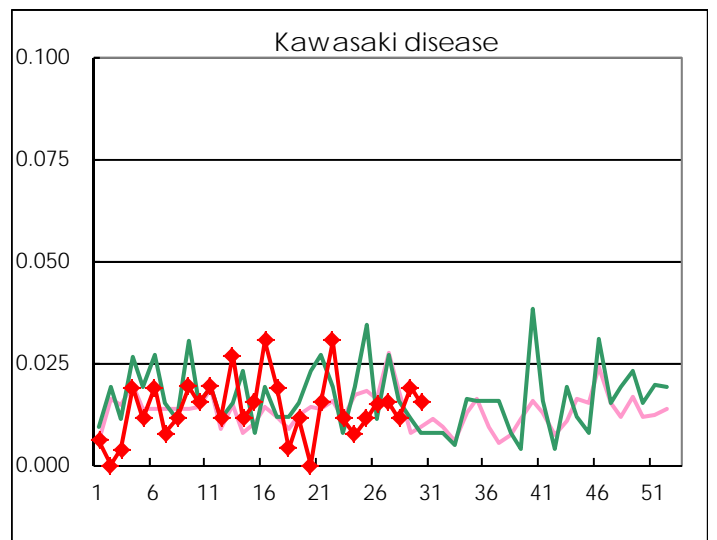
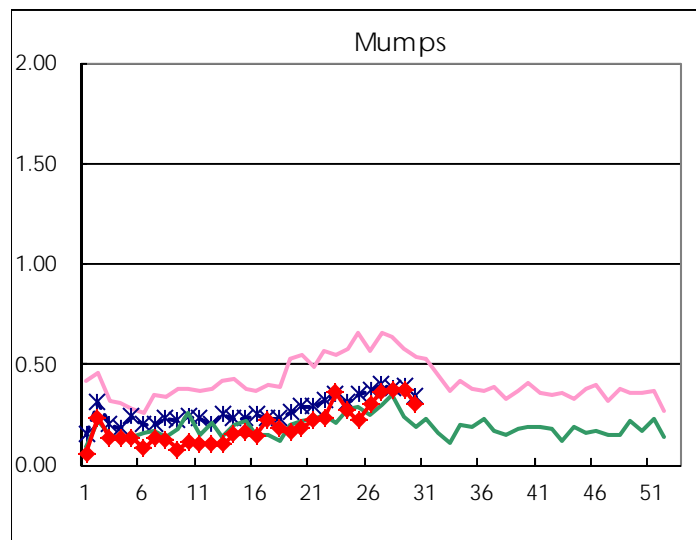
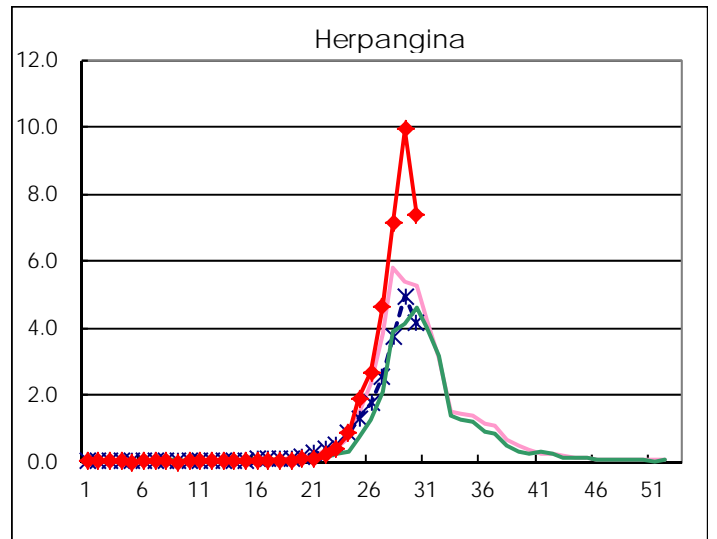
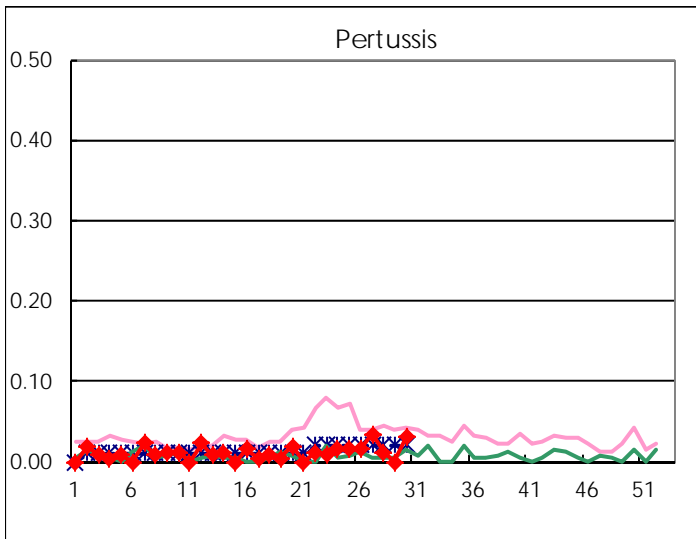
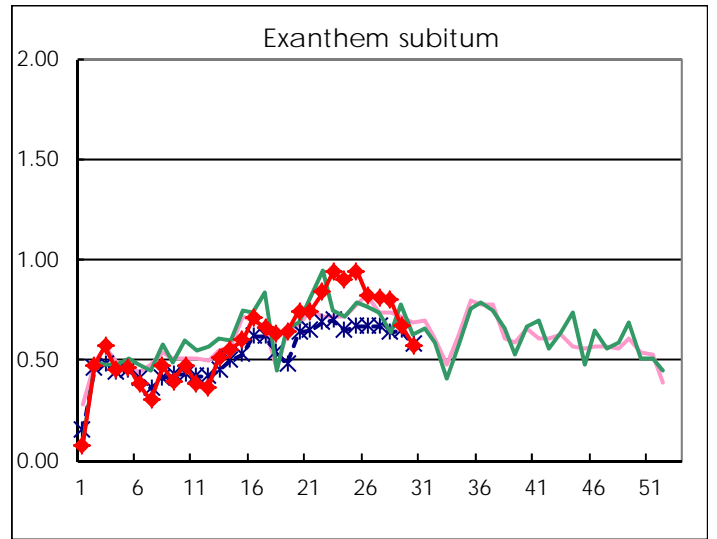
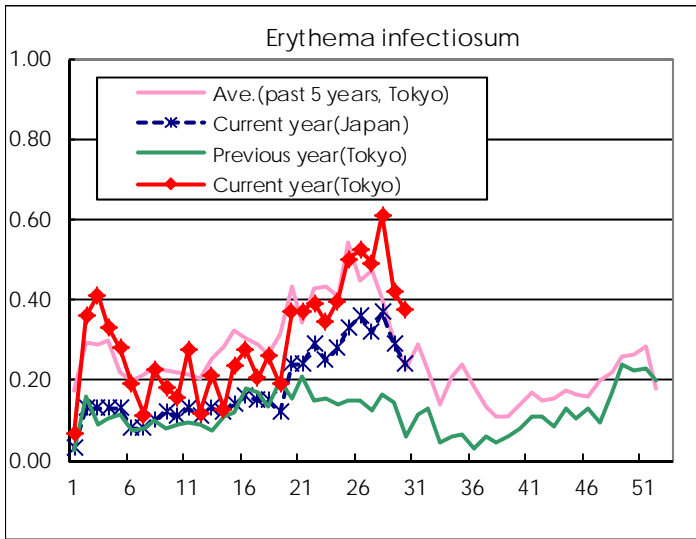
Number of patients with the diseases to be reported  
by the designated clinics and hospitals

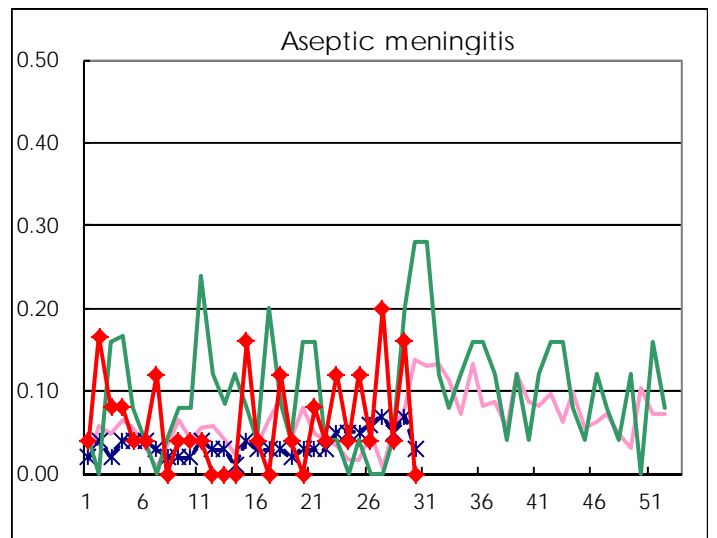
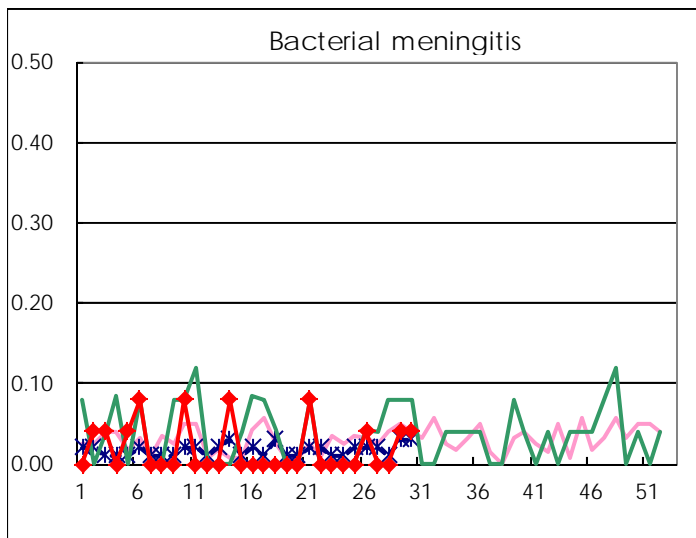
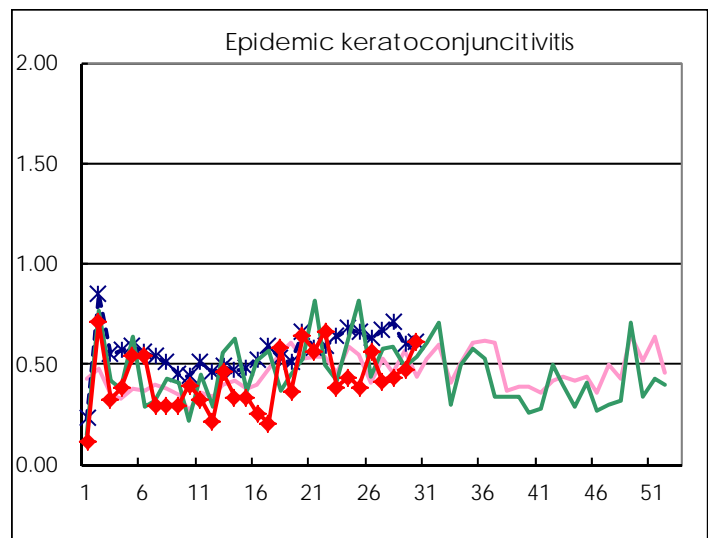
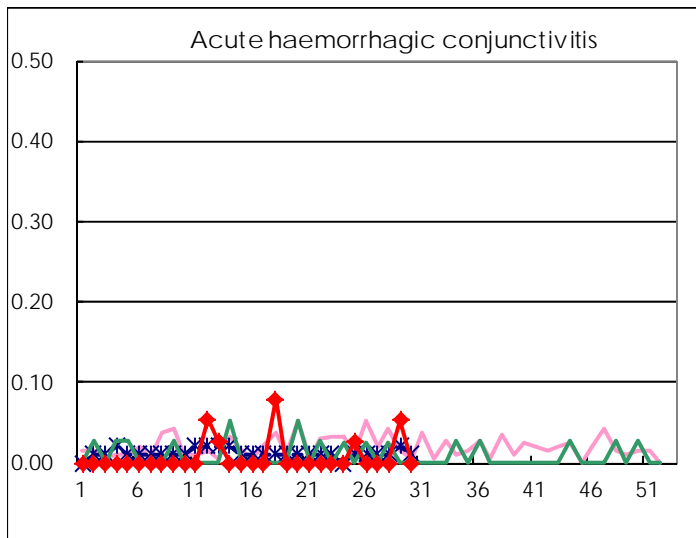
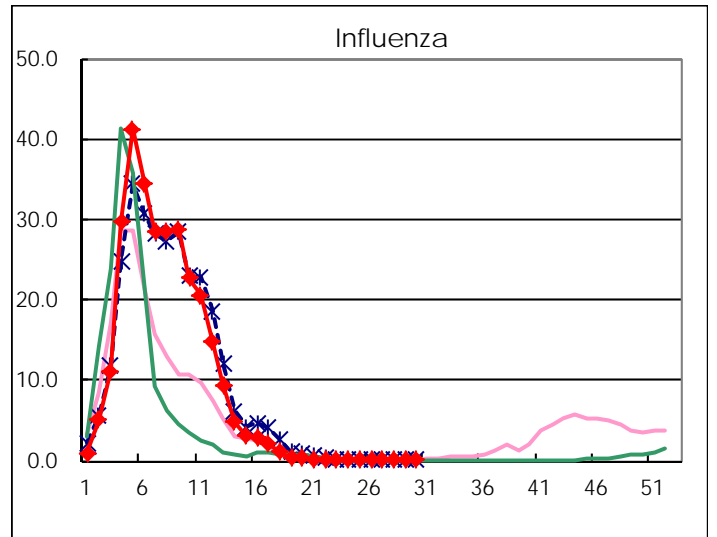
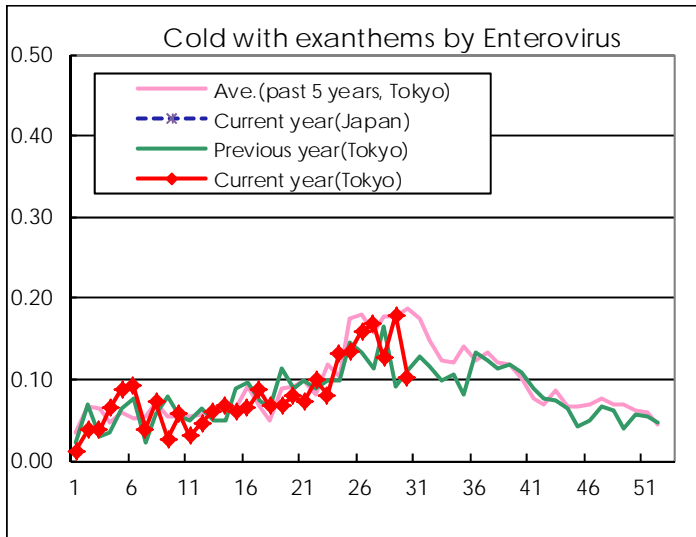
Diseases	Tokyo				
	27th	28th	29th	30th	/sentinel
Respiratory syncytial virus infection	9	32	27	24	0.09
Pharyngoconjunctival fever	191	160	178	126	0.48
Group A streptococcal pharyngitis	669	645	473	324	1.24
Infectious gastroenteritis	1,474	1,348	1,218	995	3.81
Chickenpox	193	187	171	140	0.54
Hand, foot, and mouth disease	188	285	405	339	1.30
Erythema infectiosum	129	160	110	98	0.38
Exanthem subitum	212	209	176	150	0.57
Pertussis	9	3		8	0.03
Herpangina	1,219	1,867	2,599	1,921	7.36
Mumps	96	99	99	79	0.30
Kawasaki disease	4	3	5	4	0.02
Cold with exanthems by Enterovirus	44	33	47	27	0.10
Influenza	4	1	3	2	0.00
Acute hemorrhagic conjunctivitis			2		
Epidemic keratoconjunctivitis	16	17	18	24	0.62
Bacterial meningitis			1	1	0.04
Aseptic meningitis	5	1	4		
Mycoplasma pneumonia	4	2	3	3	0.12
Chlamydial pneumonia (excluding psittacosis)	1		2		
Infectious gastroenteritis (only by Rotavirus)				1	0.04
Influenza-Associated Hospitalizations	1	1		3	0.12

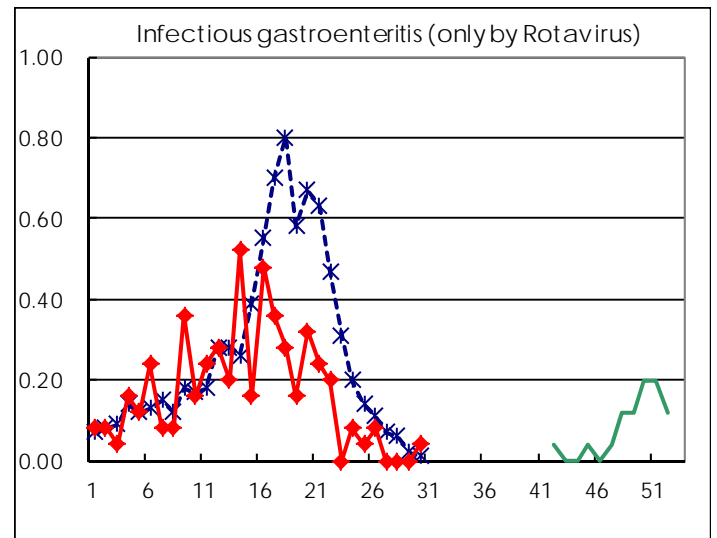
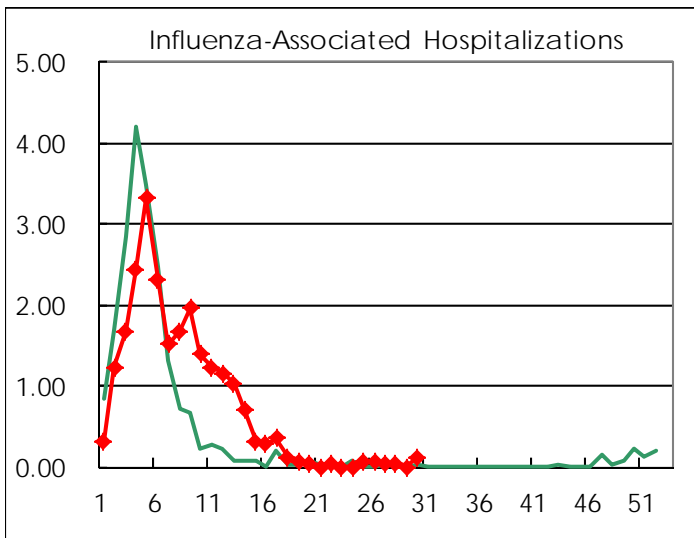
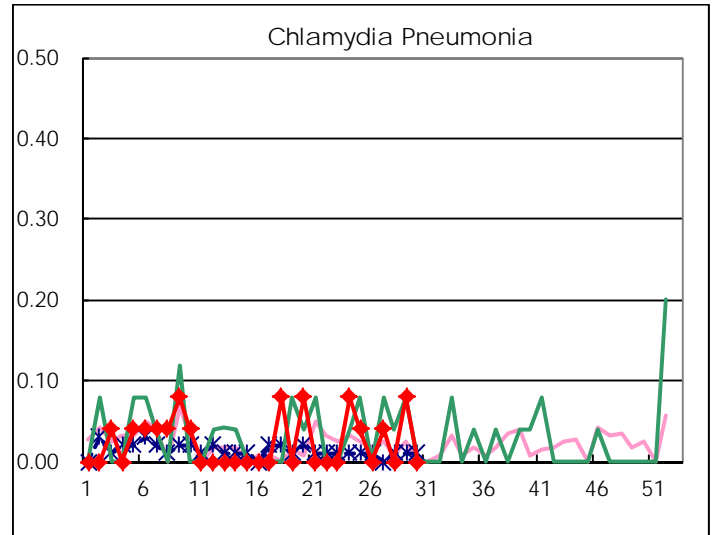
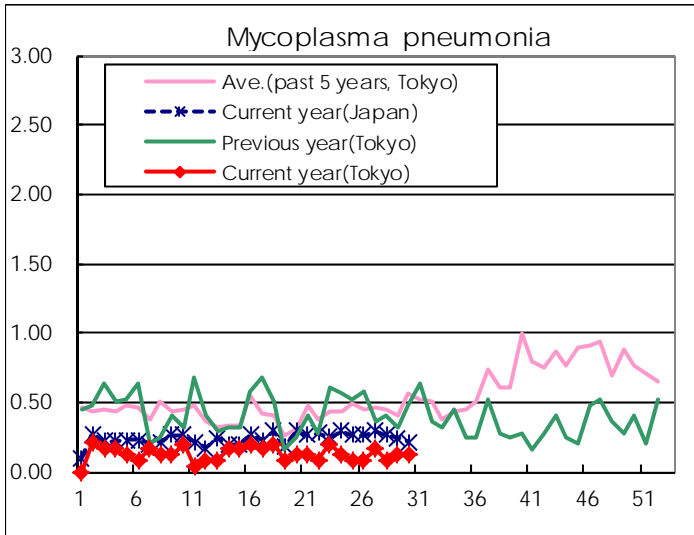
( Blank means 0. )

# Disease Trend Graph (weekly reported cases per sentinel in comparison)









Number of sentinel facilities for weekly reporting		
Types of sentinels	Number of sentinels	Sentinels having reported
Pediatric	264	261
Influenza	419	413
Ophthalmic	39	39
Specially-designated	25	25

Tokyo Metropolitan Government  
**Infectious Disease Surveillance Center**