
INFECTIOUS DISEASES WEEKLY REPORT

TOKYO iDWR

Tokyo Metropolitan Infectious Disease Surveillance Center

7 August 2014 / Number 31

Surveillance System in Tokyo, Japan

The infectious diseases which all physicians must report

All physicians must report to health centers the incidence of the diseases which are shown at page one. Health centers electronically report the individual cases to Tokyo Metropolitan Infectious Disease Surveillance Center.

The infectious diseases required to be reported by the sentinels

The numbers of patients who visit the sentinel clinics or hospitals during a week are reported to health centers in Tokyo. And they electronically report the numbers to Tokyo Metropolitan Infectious Disease Surveillance Center. We have about 500 sentinel clinics and hospitals in Tokyo.

1st Week is early January and 52nd Week is end of December.

Tokyo Metropolitan Institute of Public Health

TEL:81-3-3363-3213 FAX:81-3-5332-7365

e-mail:idsc@tokyo-eiken.go.jp

URL:idsc.tokyo-eiken.go.jp/

Number of patients with the diseases which all physicians must report

Category	Diseases	Tokyo					Japan	
		28th	29th	30th	31st	Cum 2014	31st	Cum 2014
I	Ebola hemorrhagic fever							
	Crimean-Congo hemorrhagic fever							
	Smallpox							
	South American hemorrhagic fever							
	Plague							
	Marburg disease							
	Lassa fever							
II	Acute poliomyelitis							
	Tuberculosis	102	93	68	77	2,314	409	14,808
	Diphtheria							
	Severe Acute Respiratory Syndrome(SARS)							
	Avian influenza H5N1							
※	Middle East Respiratory Syndrome (MERS)							
	Avian influenza H7N9							
III	Cholera			1		3		3
	Shigellosis	3		1		23	4	60
	Enterohemorrhagic Escherichia coli infection	25	12	10	20	196	203	1,789
	Typhoid fever					10		23
	Paratyphoid fever		2			5		10
IV	Hepatitis E		2			18	3	92
	West Nile fever							
	Hepatitis A					26	3	381
	Echinococcosis							10
	Yellow fever							
	Psittacosis					2	1	7
	Omsk hemorrhagic fever							
	Relapsing fever							1
	Kyasanur forest disease							
	Q fever							1
	Rabies							
	Coccidioidomycosis							1
	Monkeypox							
	Severe Fever with Thrombocytopenia Syndrome						2	37
	Hemorrhagic fever with renal syndrome							
	Western equine encephalitis							
	Tick-borne encephalitis							
	Anthrax							
	Chikungunya fever					2		7
	Scrub typhus(Tsutsugamushi disease)	1				5		108
	Dengue fever	1		2	1	31	3	94
	Eastern equine encephalitis							
	Avian influenza (excluding H5N1 and H7N9)							
	Nipah virus infection							
	Japanese spotted fever						6	85
	Japanese encephalitis							
	Hantavirus pulmonary syndrome							
	Herpes B virus infection							
	Glanders							
	Brucellosis		1		1	4	1	8
	Venezuelan equine encephalitis							
	Hendra virus infection							
	Epidemic typhus							
Botulism							1	
Malaria	1			2	16		33	
Tularemia								
Lyme disease							6	
Lyssavirus infection(excluding rabies)								
Rift valley fever								
Melioidosis								
Legionellosis	1	3	1	1	59	21	668	
Leptospirosis					1	2	9	
Rocky mountain spotted fever								

Category	Diseases	Tokyo				Japan		
		28th	29th	30th	31st	Cum 2014	31st	Cum 2014
V	Amebiasis	4	5	4	6	125	22	655
	Viral hepatitis(excluding hepatitis A and E)			1	2	33	2	151
	Acute encephalitis(excluding JE and WNE)	1	1	1	3	29	3	283
	Cryptosporidiosis	5	1			74		80
	Creutzfeldt-Jakob disease		1	1	1	8	2	96
	Severe invasive streptococcal infections(TSLS)		3		2	34	4	159
	Acquired immunodeficiency syndrome (AIDS)	16	10	10	6	301	7	872
	Giardiasis		1			9		37
	Invasive <i>Haemophilus influenzae</i> disease	1				16	3	121
	Invasive meningococcal disease				1	5	1	23
	Invasive pneumococcal disease	4	4			146	14	1,179
	Congenital rubella syndrome					3		8
	Syphilis	13	6	11	13	293	23	926
	Tetanus			2		8	1	76
	Vancomycin-resistant <i>S. aureus</i> infection							
	Vancomycin-resistant Enterococcus infection					3	1	32
	Rubella	1	2	1	6	76	6	260
Measles		1	1		85	5	423	

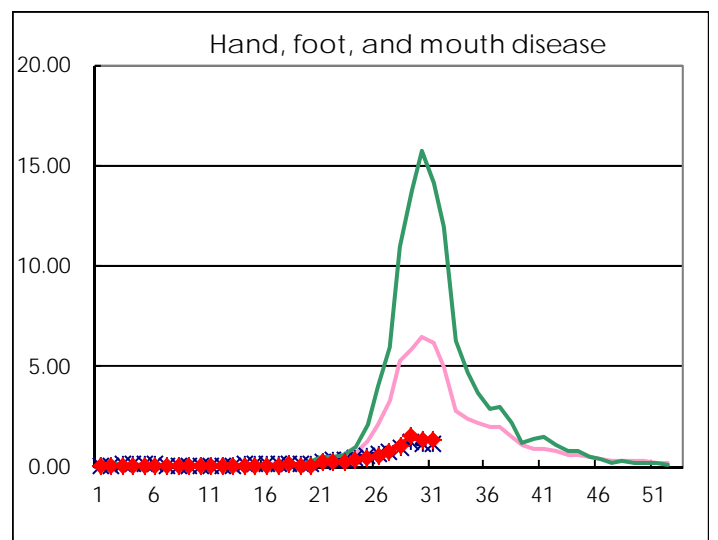
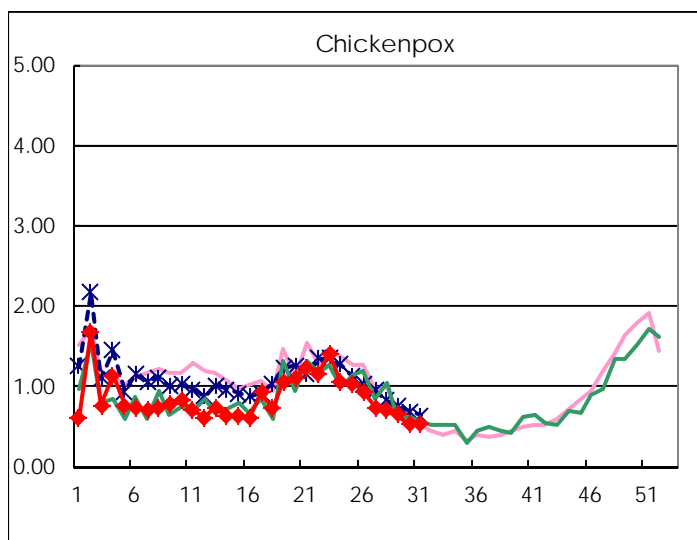
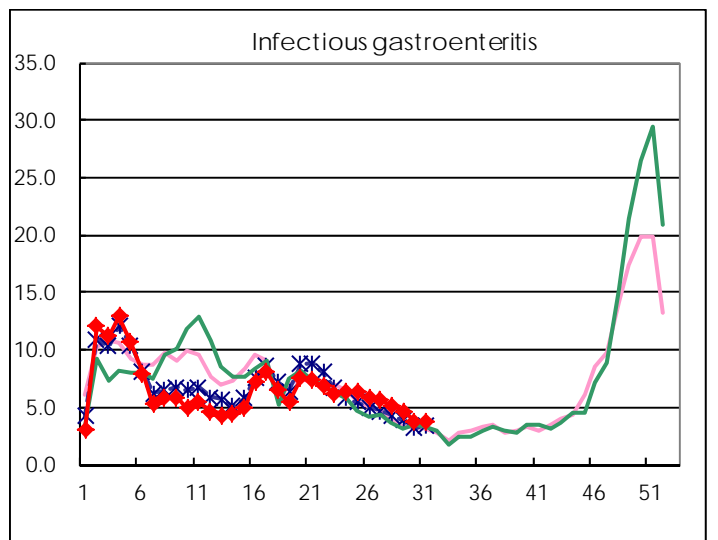
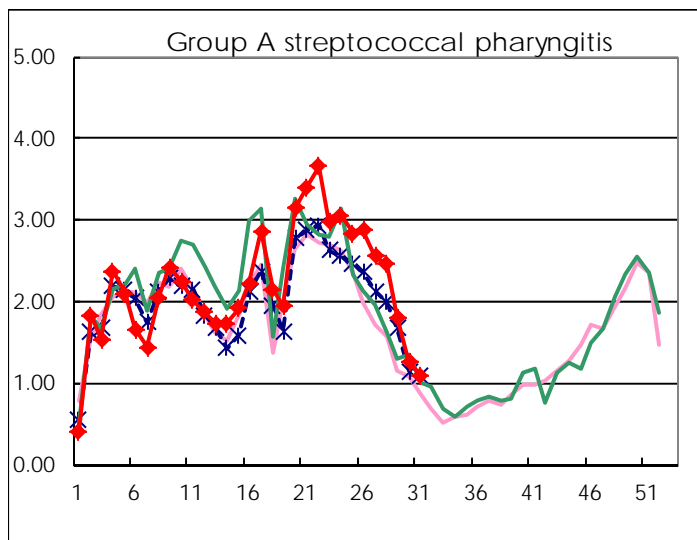
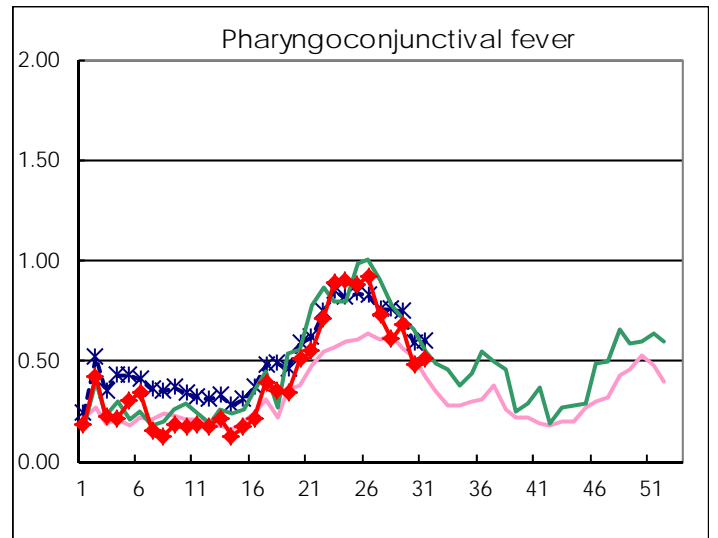
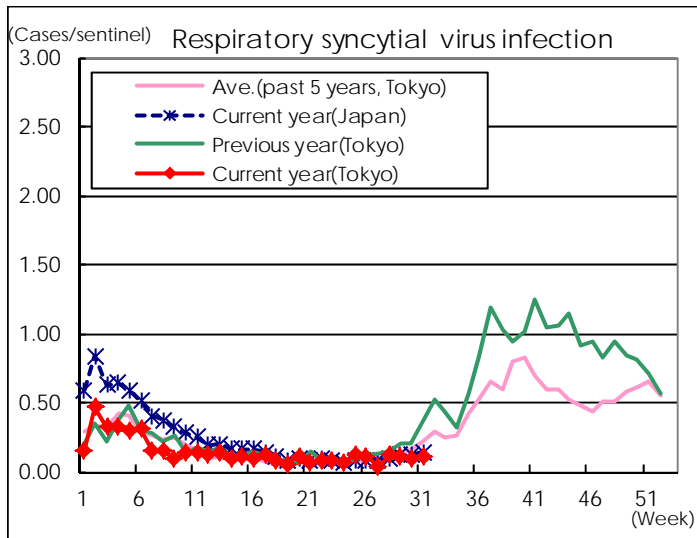
※ Designated infectious disease

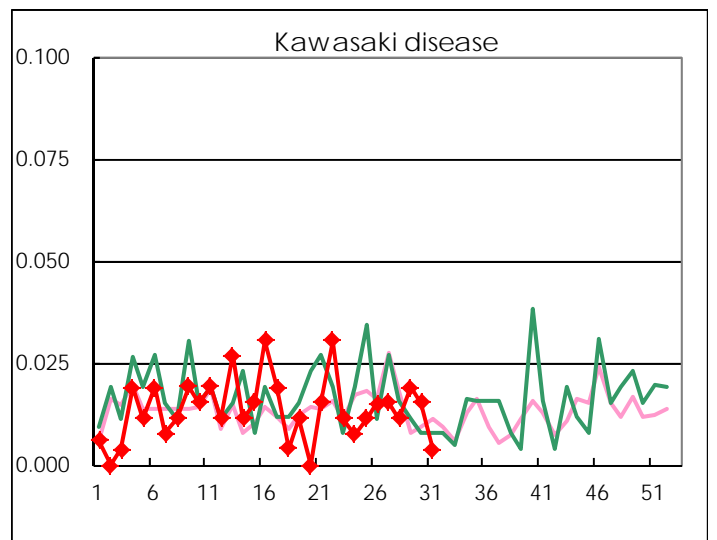
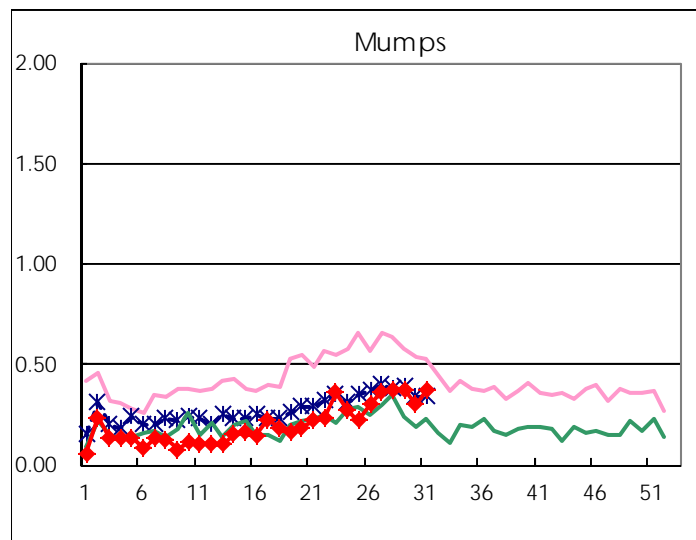
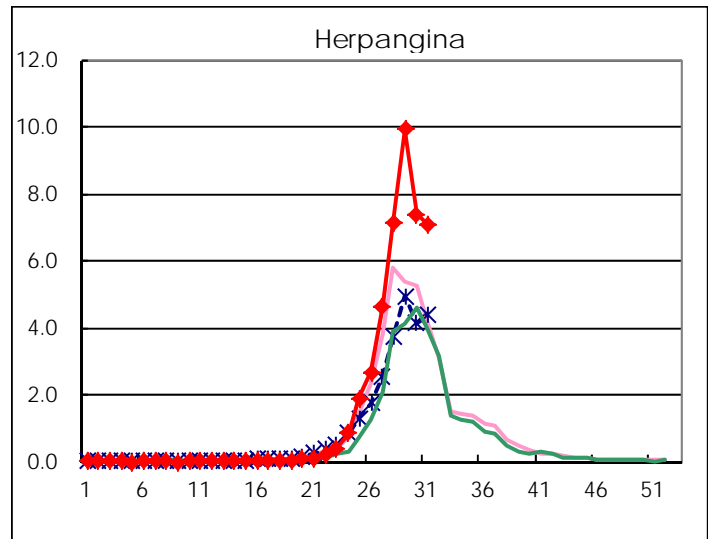
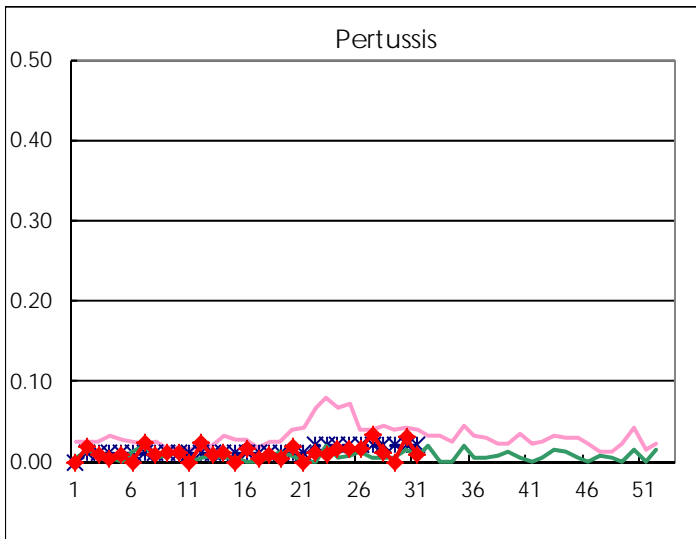
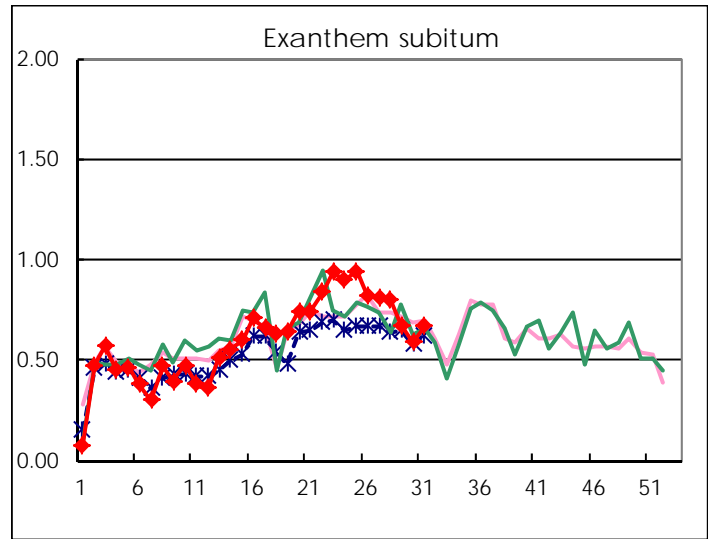
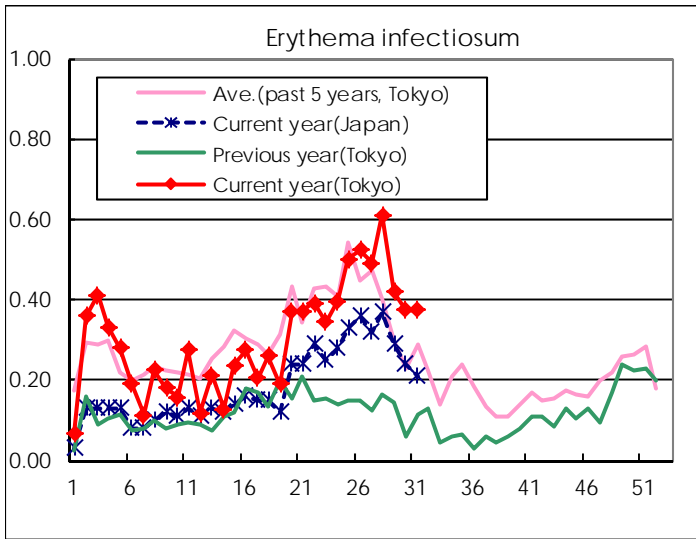
Number of patients with the diseases to be reported
by the designated clinics and hospitals

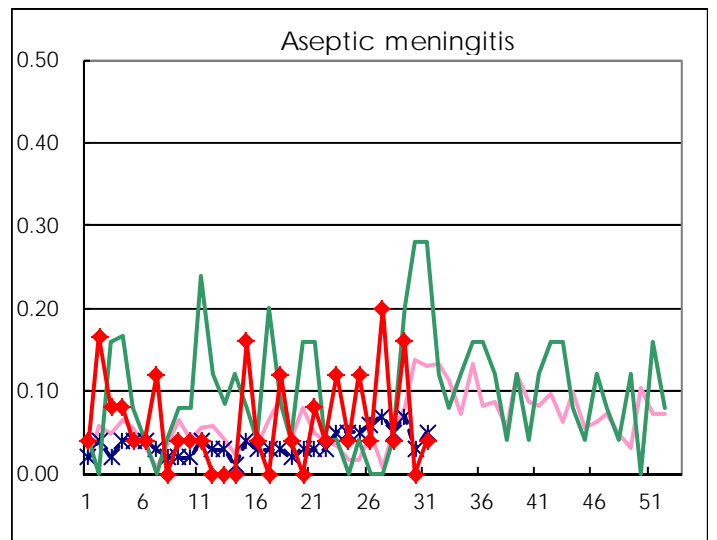
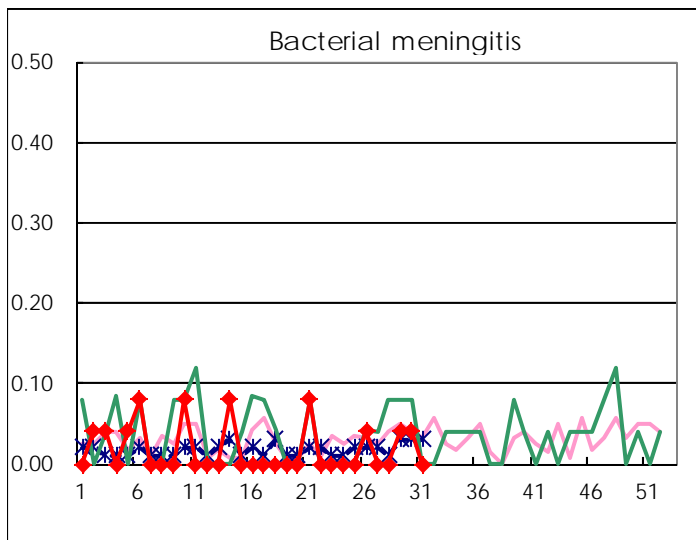
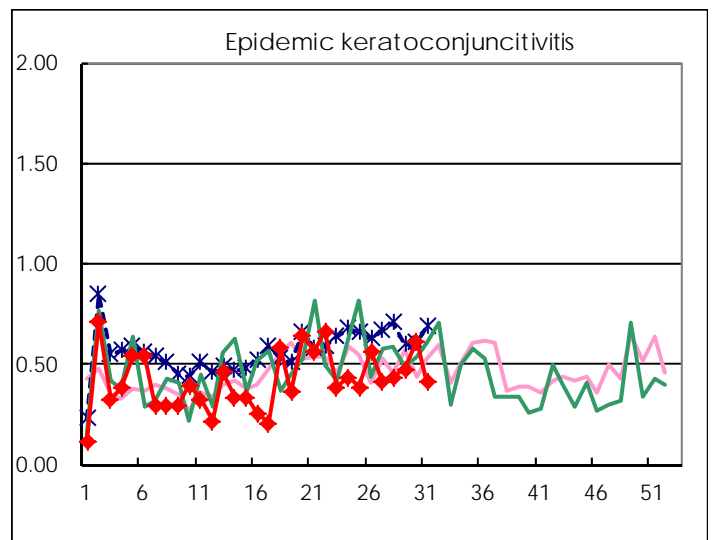
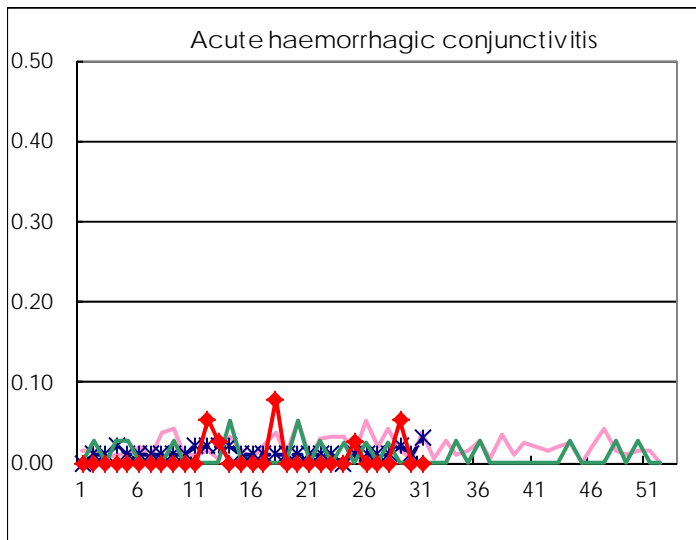
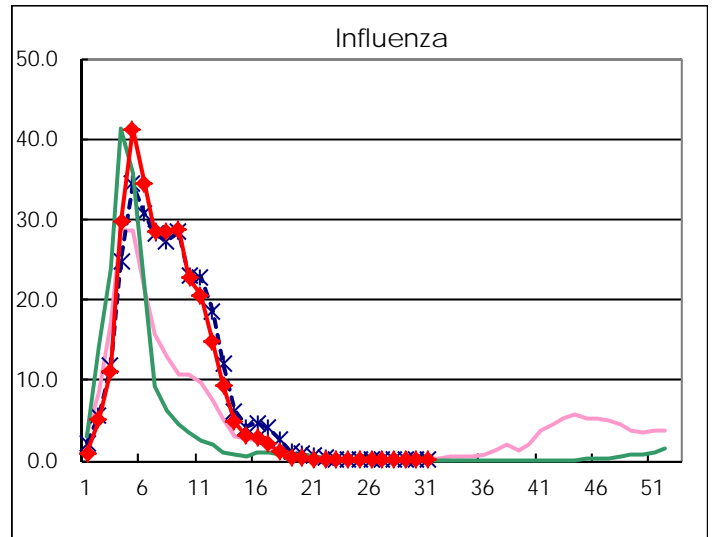
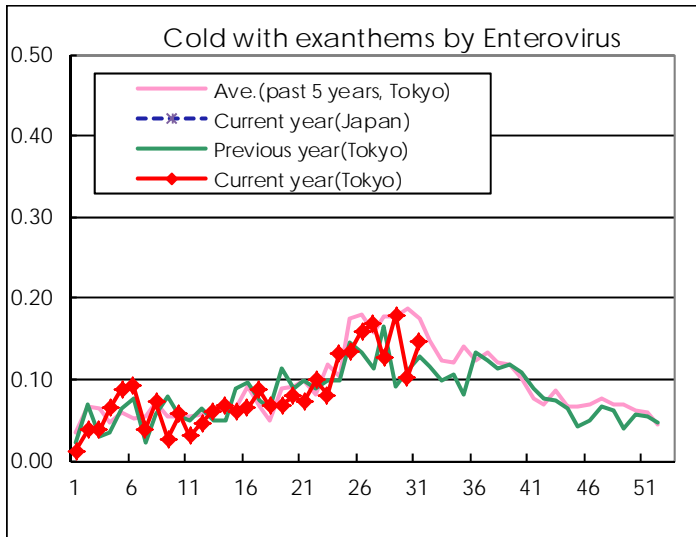
Diseases	Tokyo				
	28th	29th	30th	31st	/sentinel
Respiratory syncytial virus infection	32	27	24	27	0.10
Pharyngoconjunctival fever	160	178	126	135	0.52
Group A streptococcal pharyngitis	645	473	328	285	1.09
Infectious gastroenteritis	1,348	1,218	997	956	3.66
Chickenpox	187	171	140	138	0.53
Hand, foot, and mouth disease	285	405	343	348	1.33
Erythema infectiosum	160	110	98	98	0.38
Exanthem subitum	209	176	154	175	0.67
Pertussis	3		8	2	0.01
Herpangina	1,867	2,599	1,934	1,851	7.09
Mumps	99	99	79	97	0.37
Kawasaki disease	3	5	4	1	0.00
Cold with exanthems by Enterovirus	33	47	27	38	0.15
Influenza	1	3	2	4	0.01
Acute hemorrhagic conjunctivitis		2			
Epidemic keratoconjunctivitis	17	18	24	16	0.41
Bacterial meningitis		1	1		
Aseptic meningitis	1	4		1	0.04
Mycoplasma pneumonia	2	3	3	2	0.08
Chlamydial pneumonia (excluding psittacosis)		2			
Infectious gastroenteritis (only by Rotavirus)			1	1	0.04
Influenza-Associated Hospitalizations	1		3		

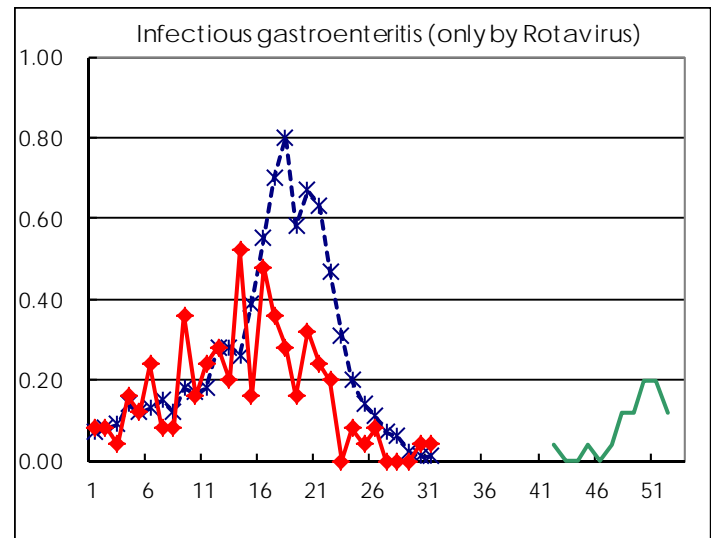
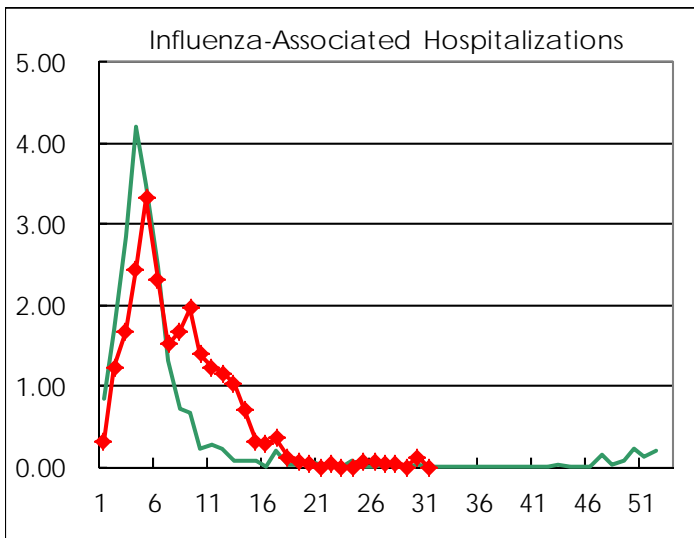
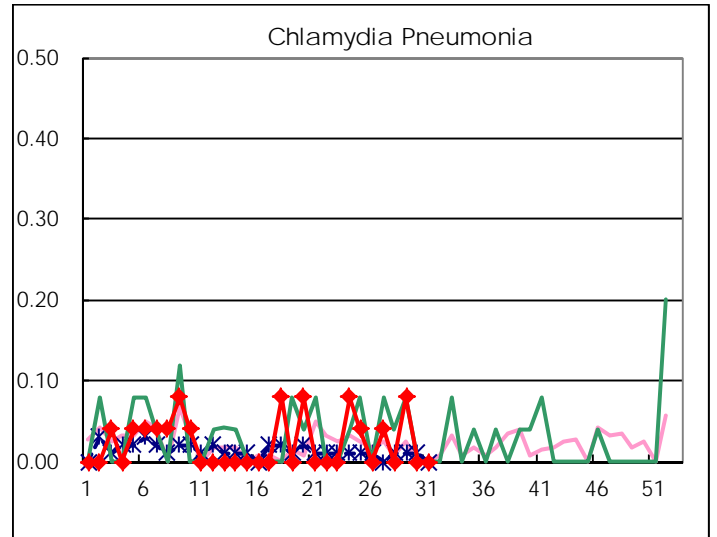
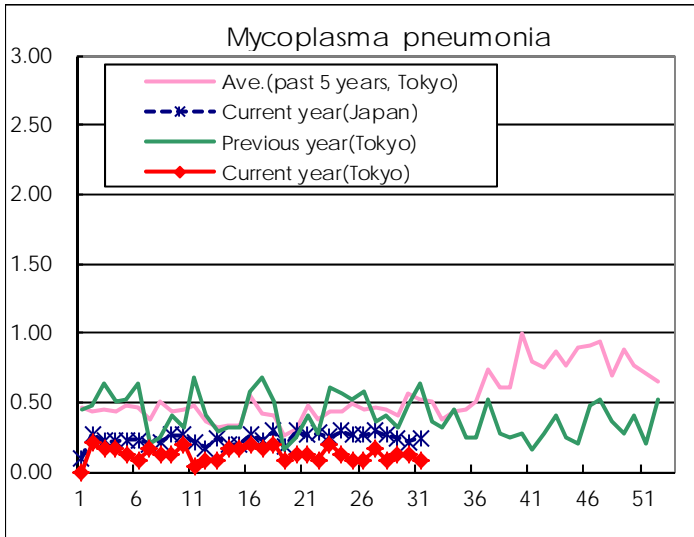
(Blank means 0.)

Disease Trend Graph (weekly reported cases per sentinel in comparison)









Number of sentinel facilities for weekly reporting		
Types of sentinels	Number of sentinels	Sentinels having reported
Pediatric	264	261
Influenza	419	413
Ophthalmic	39	39
Specially-designated	25	25

Tokyo Metropolitan Government
Infectious Disease Surveillance Center