

---

INFECTIOUS DISEASES WEEKLY REPORT

# TOKYO iDWR

Tokyo Metropolitan Infectious Disease Surveillance Center

## 21 August 2014 / Number 33

### Surveillance System in Tokyo, Japan

#### The infectious diseases which all physicians must report

All physicians must report to health centers the incidence of the diseases which are shown at page one. Health centers electronically report the individual cases to Tokyo Metropolitan Infectious Disease Surveillance Center.

#### The infectious diseases required to be reported by the sentinels

The numbers of patients who visit the sentinel clinics or hospitals during a week are reported to health centers in Tokyo. And they electronically report the numbers to Tokyo Metropolitan Infectious Disease Surveillance Center. We have about 500 sentinel clinics and hospitals in Tokyo.

1st Week is early January and 52nd Week is end of December.

Tokyo Metropolitan Institute of Public Health

TEL:81-3-3363-3213 FAX:81-3-5332-7365

e-mail:[idsc@tokyo-eiken.go.jp](mailto:idsc@tokyo-eiken.go.jp)

URL:[idsc.tokyo-eiken.go.jp/](http://idsc.tokyo-eiken.go.jp/)

---

## Number of patients with the diseases which all physicians must report

Category	Diseases	Tokyo					Japan	
		30th	31st	32nd	33rd	Cum 2014	33rd	Cum 2014
I	Ebola hemorrhagic fever							
	Crimean-Congo hemorrhagic fever							
	Smallpox							
	South American hemorrhagic fever							
	Plague							
	Marburg disease							
	Lassa fever							
II	Acute poliomyelitis							
	Tuberculosis	78	90	87	89	2,515	388	15,975
	Diphtheria							
	Severe Acute Respiratory Syndrome(SARS)							
	Avian influenza H5N1							
※	Middle East Respiratory Syndrome (MERS)							
	Avian influenza H7N9							
III	Cholera	1				3		3
	Shigellosis	1				23		63
	Enterohemorrhagic Escherichia coli infection	10	20	16	16	228	231	2,387
	Typhoid fever					10		23
	Paratyphoid fever					5		10
IV	Hepatitis E					18	1	96
	West Nile fever							
	Hepatitis A			1		27	1	385
	Echinococcosis							12
	Yellow fever							
	Psittacosis					2		7
	Omsk hemorrhagic fever							
	Relapsing fever							1
	Kyasanur forest disease							
	Q fever							1
	Rabies							
	Coccidioidomycosis							1
	Monkeypox							
	Severe Fever with Thrombocytopenia Syndrome						2	43
	Hemorrhagic fever with renal syndrome							
	Western equine encephalitis							
	Tick-borne encephalitis							
	Anthrax							
	Chikungunya fever					2		7
	Scrub typhus(Tsutsugamushi disease)					5	2	110
	Dengue fever	2	1		1	32	1	98
	Eastern equine encephalitis							
	Avian influenza (excluding H5N1 and H7N9)							
	Nipah virus infection							
	Japanese spotted fever						4	101
	Japanese encephalitis							
	Hantavirus pulmonary syndrome							
	Herpes B virus infection							
	Glanders							
	Brucellosis			1			4	9
	Venezuelan equine encephalitis							
	Hendra virus infection							
	Epidemic typhus							
Botulism							1	
Malaria			2			16	35	
Tularemia								
Lyme disease							7	
Lyssavirus infection(excluding rabies)								
Rift valley fever								
Melioidosis								
Legionellosis	1	1	1	3	63	14	713	
Leptospirosis					1		11	
Rocky mountain spotted fever								

Category	Diseases	Tokyo					Japan	
		30th	31st	32nd	33rd	Cum 2014	33rd	Cum 2014
V	Amebiasis	4	6	7	5	137	12	702
	Viral hepatitis(excluding hepatitis A and E)	1	2	1	2	36	1	158
	Acute encephalitis(excluding JE and WNE)	1	4	1	2	33	5	301
	Cryptosporidiosis					74		81
	Creutzfeldt-Jakob disease	1	1			8	2	104
	Severe invasive streptococcal infections(TSLS)		2		1	35	1	170
	Acquired immunodeficiency syndrome (AIDS)	10	8	14	11	328	21	934
	Giardiasis			1		10	1	40
	Invasive <i>Haemophilus influenzae</i> disease					16	1	127
	Invasive meningococcal disease		1			5		22
	Invasive pneumococcal disease			2	2	150	8	1,209
	Congenital rubella syndrome					3		8
	Syphilis	11	14	14	18	326	19	1,006
	Tetanus	2				8	3	84
	Vancomycin-resistant <i>S. aureus</i> infection							
	Vancomycin-resistant <i>Enterococcus</i> infection					3		32
	Rubella	1	6		1	77	1	262
Measles	1				84	6	433	

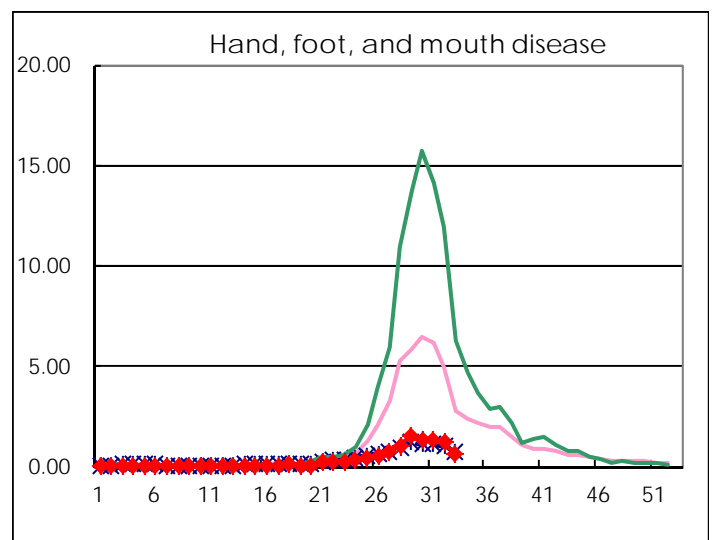
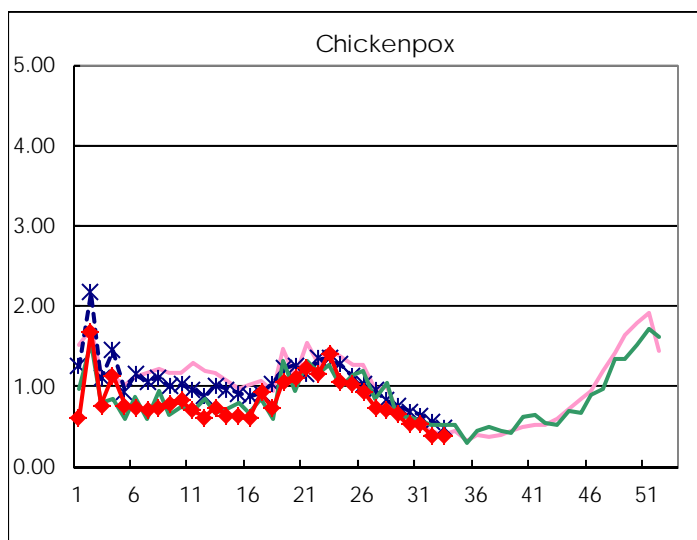
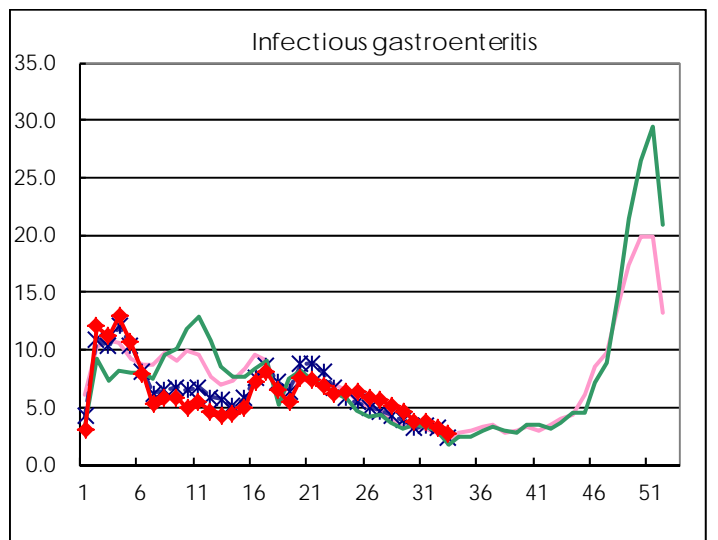
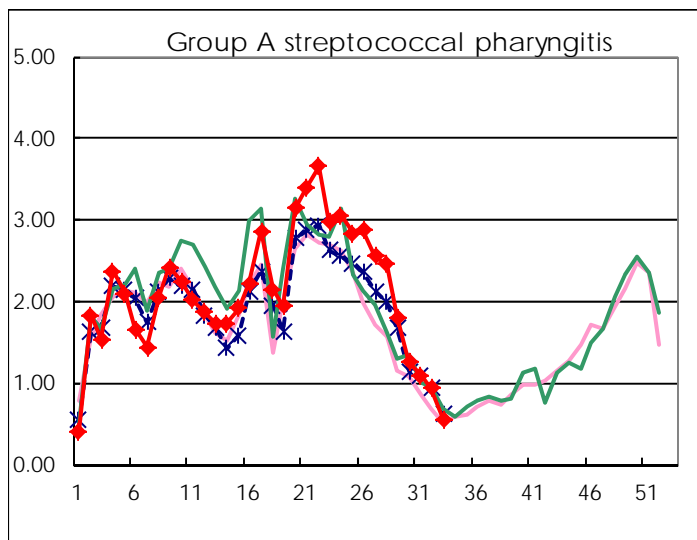
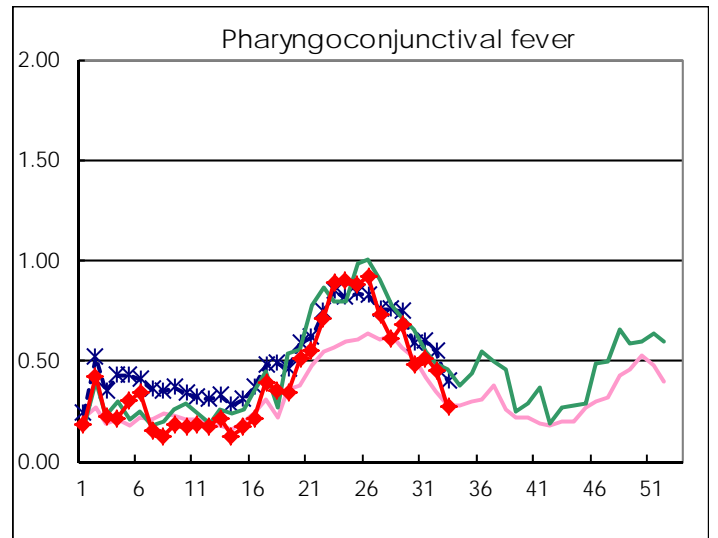
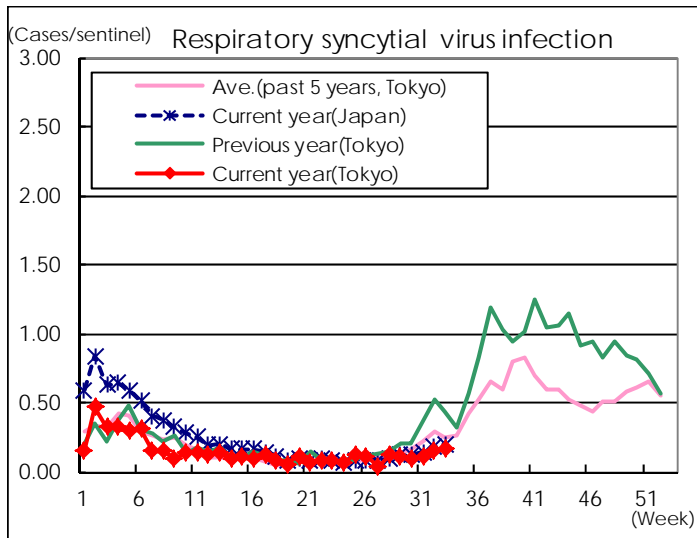
※ Designated infectious disease

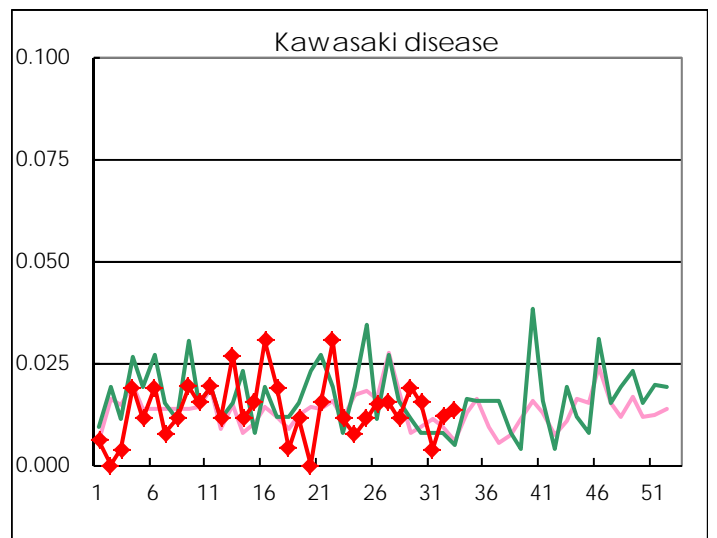
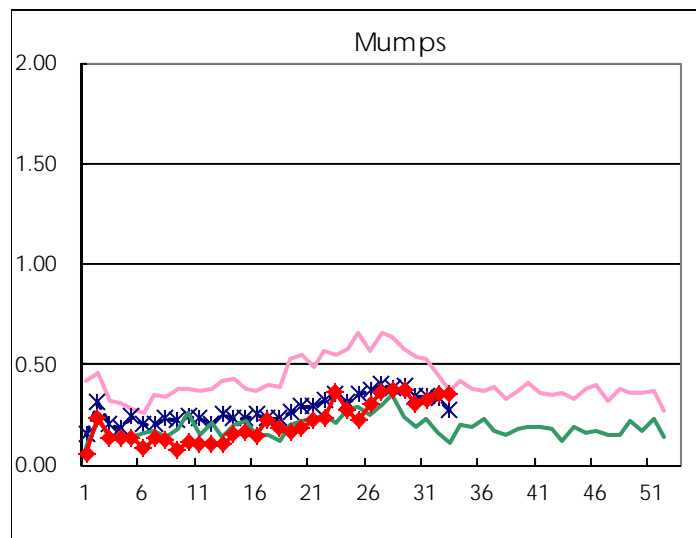
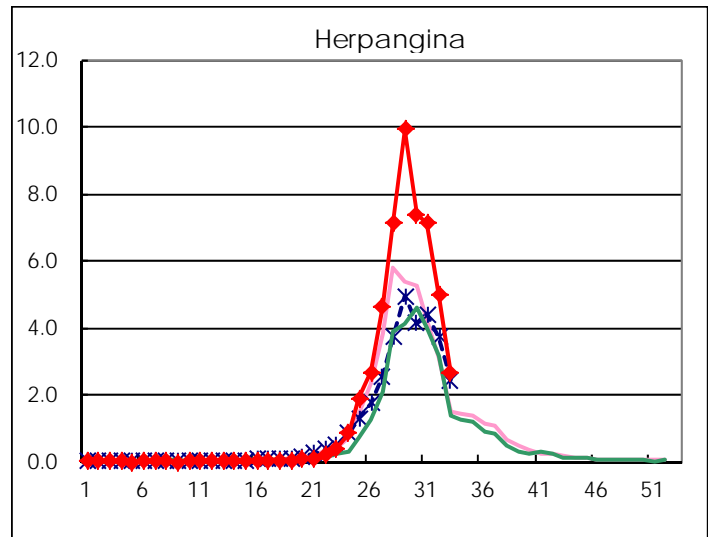
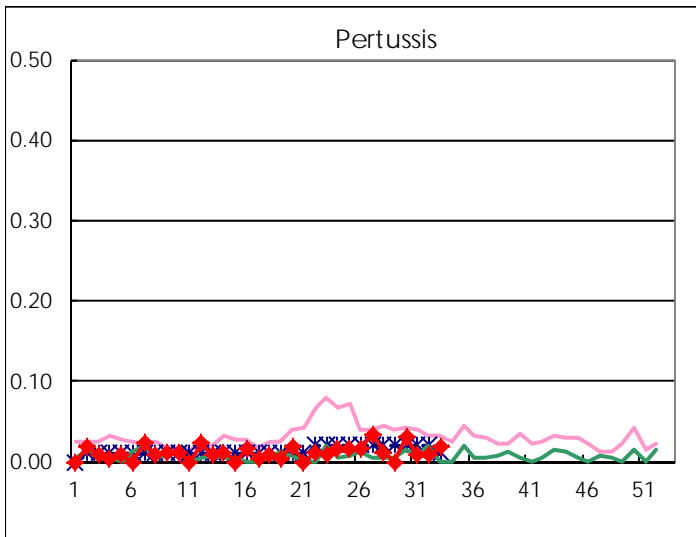
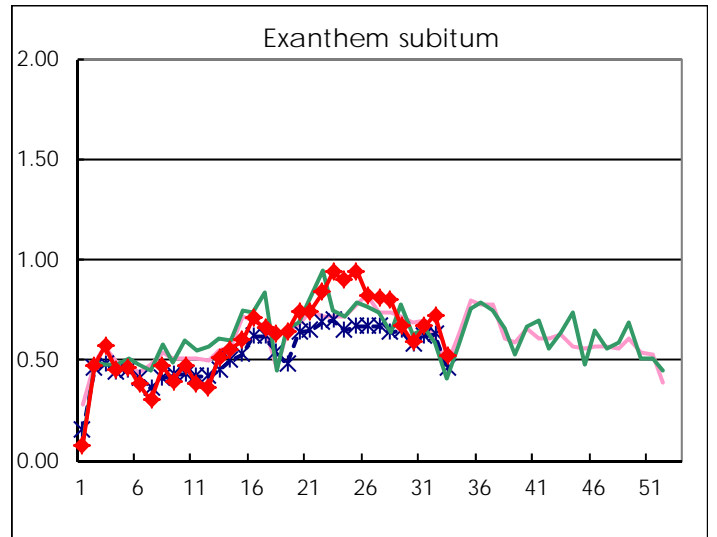
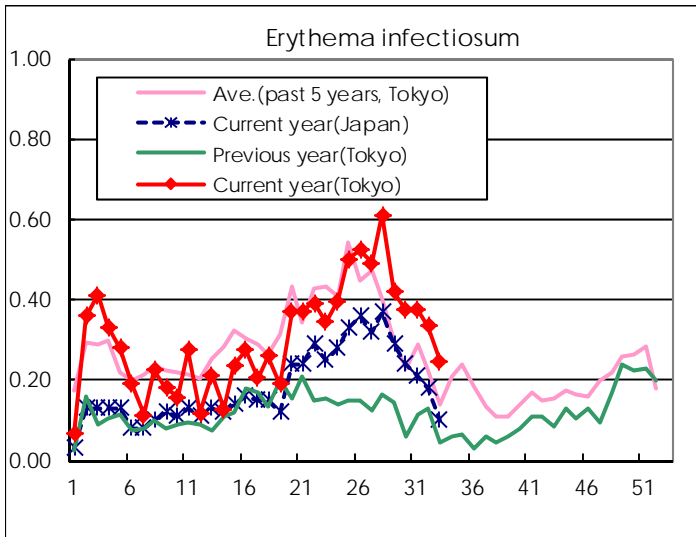
Number of patients with the diseases to be reported  
by the designated clinics and hospitals

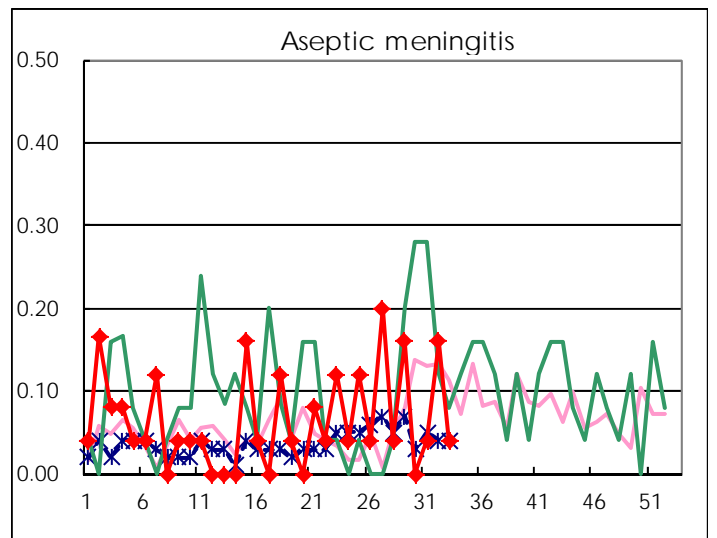
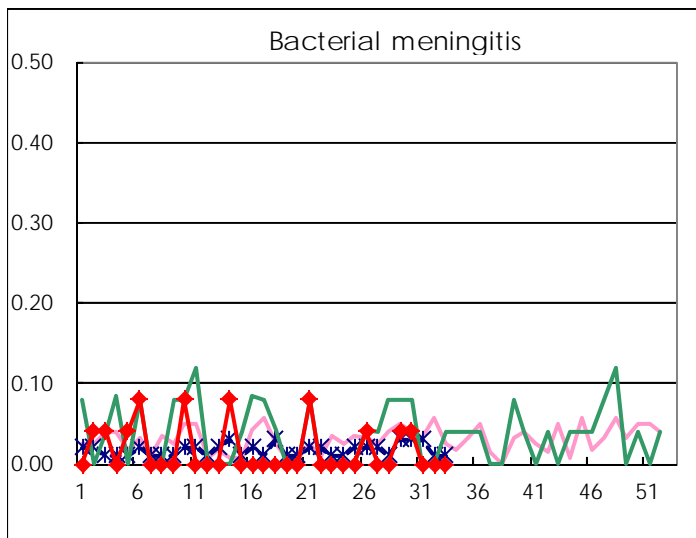
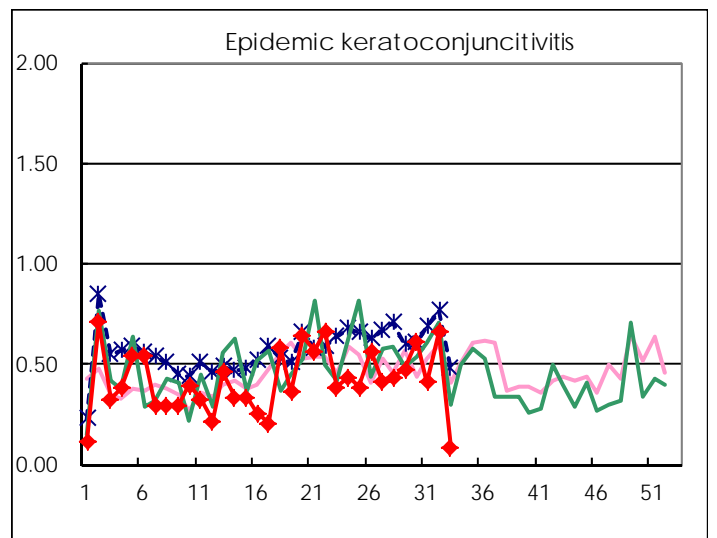
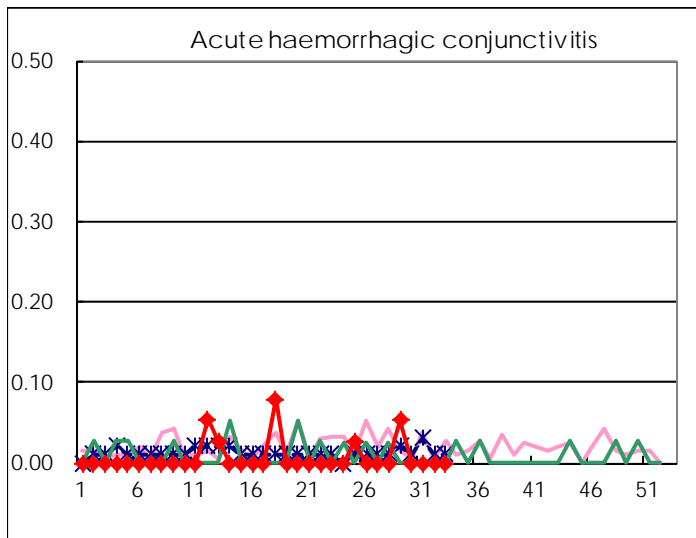
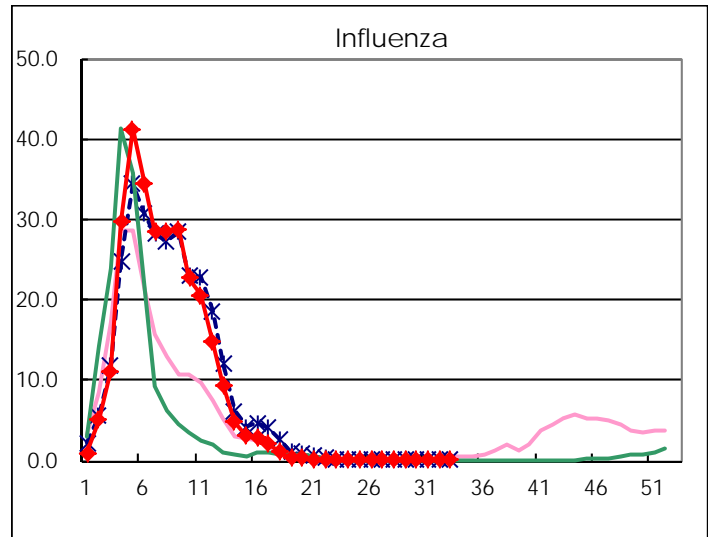
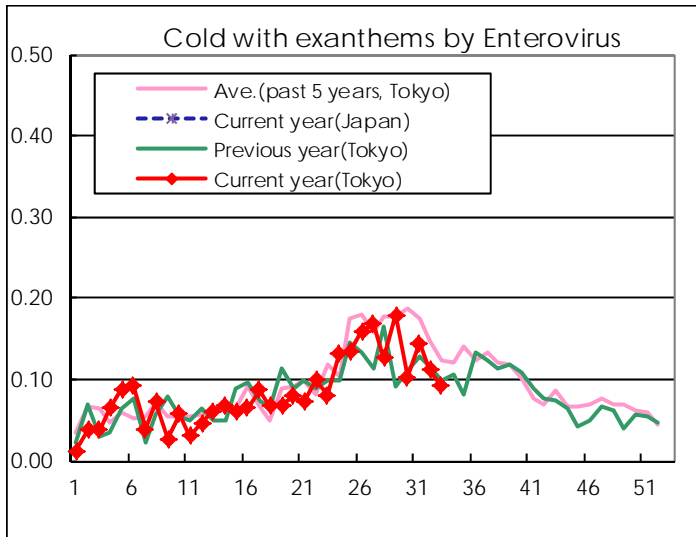
Diseases	Tokyo				
	30th	31st	32nd	33rd	/sentinel
Respiratory syncytial virus infection	24	27	37	37	0.17
Pharyngoconjunctival fever	126	135	114	59	0.27
Group A streptococcal pharyngitis	328	288	234	122	0.56
Infectious gastroenteritis	997	964	828	593	2.71
Chickenpox	140	138	99	83	0.38
Hand, foot, and mouth disease	343	349	302	131	0.60
Erythema infectiosum	98	98	84	54	0.25
Exanthem subitum	154	175	182	115	0.53
Pertussis	8	2	2	4	0.02
Herpangina	1,934	1,869	1,251	577	2.63
Mumps	79	85	88	77	0.35
Kawasaki disease	4	1	3	3	0.01
Cold with exanthems by Enterovirus	27	38	28	20	0.09
Influenza	2	4	3	5	0.01
Acute hemorrhagic conjunctivitis					
Epidemic keratoconjunctivitis	24	16	25	3	0.09
Bacterial meningitis	1				
Aseptic meningitis		1	4	1	0.04
Mycoplasma pneumonia	3	2	2	1	0.04
Chlamydial pneumonia (excluding psittacosis)					
Infectious gastroenteritis (only by Rotavirus)	1	1			
Influenza-Associated Hospitalizations	3				

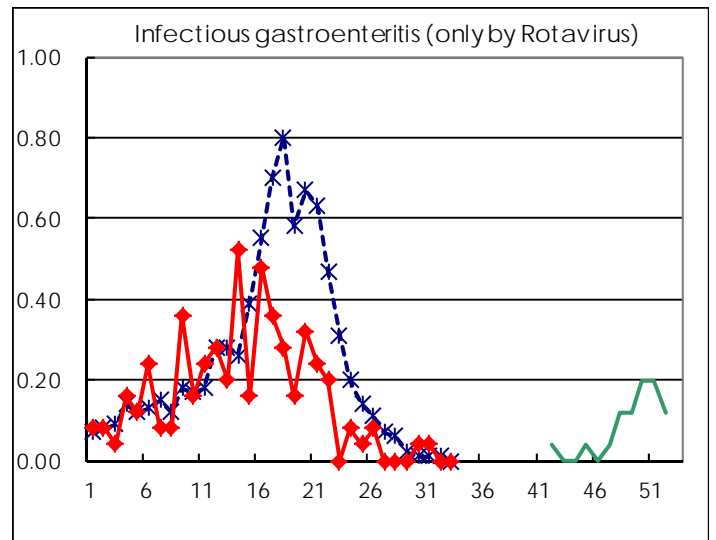
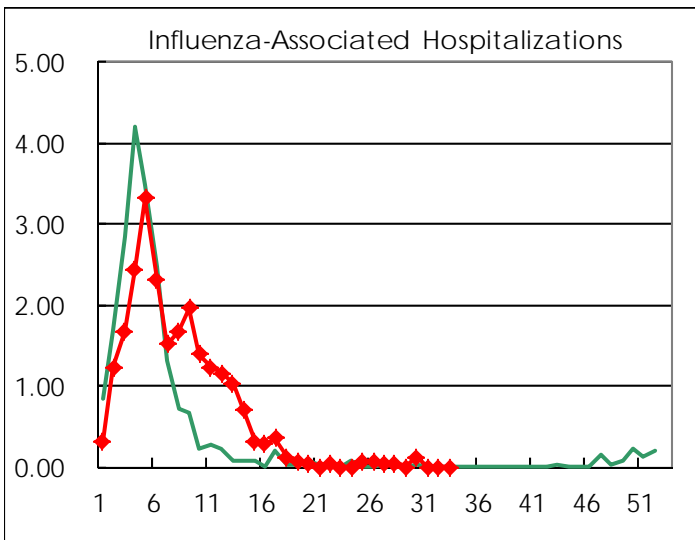
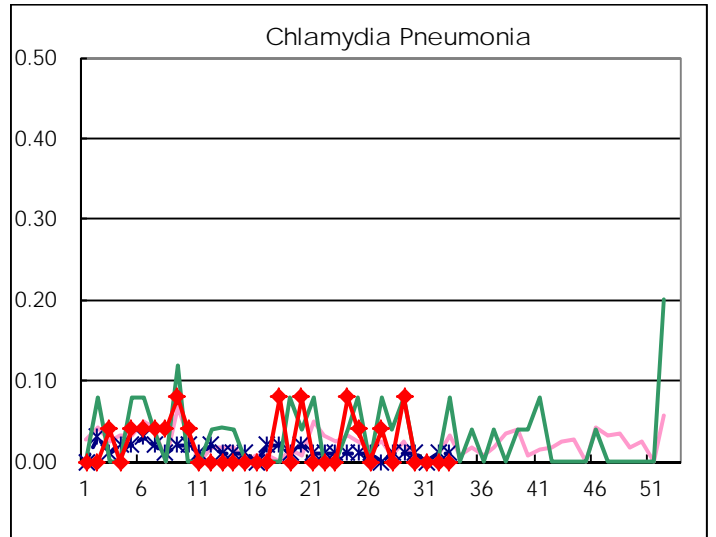
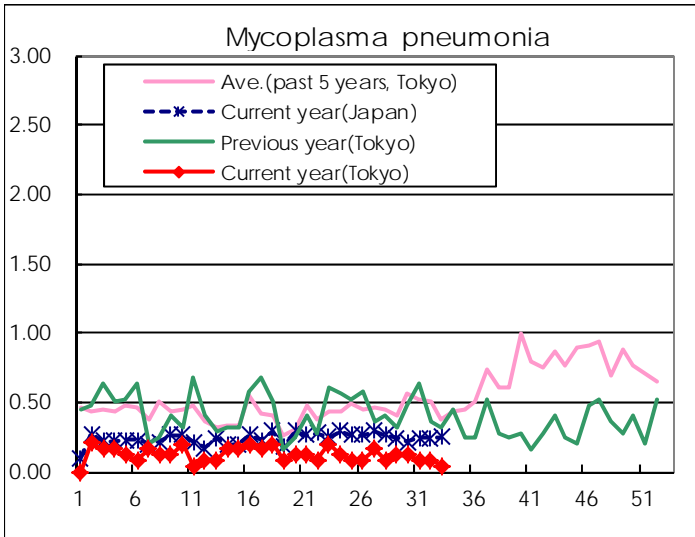
( Blank means 0. )

# Disease Trend Graph (weekly reported cases per sentinel in comparison)









Number of sentinel facilities for weekly reporting		
Types of sentinels	Number of sentinels	Sentinels having reported
Pediatric	264	219
Influenza	419	358
Ophthalmic	39	34
Specially-designated	25	25

Tokyo Metropolitan Government  
**Infectious Disease Surveillance Center**