
INFECTIOUS DISEASES WEEKLY REPORT

TOKYO IDWR

Tokyo Metropolitan Infectious Disease Surveillance Center

28 August 2014 / Number 34

Surveillance System in Tokyo, Japan

The infectious diseases which all physicians must report

All physicians must report to health centers the incidence of the diseases which are shown at page one. Health centers electronically report the individual cases to Tokyo Metropolitan Infectious Disease Surveillance Center.

The infectious diseases required to be reported by the sentinels

The numbers of patients who visit the sentinel clinics or hospitals during a week are reported to health centers in Tokyo. And they electronically report the numbers to Tokyo Metropolitan Infectious Disease Surveillance Center. We have about 500 sentinel clinics and hospitals in Tokyo.

1st Week is early January and 52nd Week is end of December.

Tokyo Metropolitan Institute of Public Health

TEL:81-3-3363-3213 FAX:81-3-5332-7365

e-mail:idsc@tokyo-eiken.go.jp

URL:idsc.tokyo-eiken.go.jp/

Number of patients with the diseases which all physicians must report

Category	Diseases	Tokyo					Japan	
		31st	32nd	33rd	34th	Cum 2014	34th	Cum 2014
I	Ebola hemorrhagic fever							
	Crimean-Congo hemorrhagic fever							
	Smallpox							
	South American hemorrhagic fever							
	Plague							
	Marburg disease							
	Lassa fever							
II	Acute poliomyelitis							
	Tuberculosis	89	91	93	87	2,609	420	16,545
	Diphtheria							
	Severe Acute Respiratory Syndrome(SARS)							
	Avian influenza H5N1							
※	Middle East Respiratory Syndrome (MERS)							
	Avian influenza H7N9							
III	Cholera					3		3
	Shigellosis					23	3	66
	Enterohemorrhagic Escherichia coli infection	20	16	16	18	246	168	2,771
	Typhoid fever				1	11	1	24
	Paratyphoid fever				1	6	2	12
IV	Hepatitis E					18	2	99
	West Nile fever							
	Hepatitis A		1			27	2	389
	Echinococcosis							13
	Yellow fever							
	Psittacosis					2		7
	Omsk hemorrhagic fever							
	Relapsing fever							1
	Kyasanur forest disease							
	Q fever							1
	Rabies							
	Coccidioidomycosis							1
	Monkeypox							
	Severe Fever with Thrombocytopenia Syndrome						2	44
	Hemorrhagic fever with renal syndrome							
	Western equine encephalitis							
	Tick-borne encephalitis							
	Anthrax							
	Chikungunya fever					2		7
	Scrub typhus(Tsutsugamushi disease)					5	1	111
	Dengue fever	1		1	2	34	5	103
	Eastern equine encephalitis							
	Avian influenza (excluding H5N1 and H7N9)							
	Nipah virus infection							
	Japanese spotted fever						4	105
	Japanese encephalitis							
	Hantavirus pulmonary syndrome							
	Herpes B virus infection							
	Glanders							
	Brucellosis	1				4		9
	Venezuelan equine encephalitis							
	Hendra virus infection							
	Epidemic typhus							
Botulism							1	
Malaria	2				16		35	
Tularemia								
Lyme disease							7	
Lyssavirus infection(excluding rabies)								
Rift valley fever								
Melioidosis								
Legionellosis	1	1	4	3	67	26	748	
Leptospirosis					1		11	
Rocky mountain spotted fever								

Category	Diseases	Tokyo					Japan	
		31st	32nd	33rd	34th	Cum 2014	34th	Cum 2014
V	Amebiasis	6	7	7	4	143	8	719
	Viral hepatitis(excluding hepatitis A and E)	2	1	3		37	1	162
	Acute encephalitis(excluding JE and WNE)	4	1	2	1	34	4	309
	Cryptosporidiosis					74		81
	Creutzfeldt-Jakob disease	1				8	4	111
	Severe invasive streptococcal infections(TSLS)	2		1		35	5	177
	Acquired immunodeficiency syndrome (AIDS)	8	14	12	8	337	12	965
	Giardiasis		1			10		40
	Invasive <i>Haemophilus influenzae</i> disease					16	2	129
	Invasive meningococcal disease	1				5		22
	Invasive pneumococcal disease		2	2	5	155	4	1,220
	Congenital rubella syndrome					3		8
	Syphilis	14	14	18	5	331	26	1,042
	Tetanus					8		85
	Vancomycin-resistant <i>S. aureus</i> infection							
	Vancomycin-resistant Enterococcus infection					3	1	33
	Rubella	6		1	2	79	2	265
Measles					84	6	438	

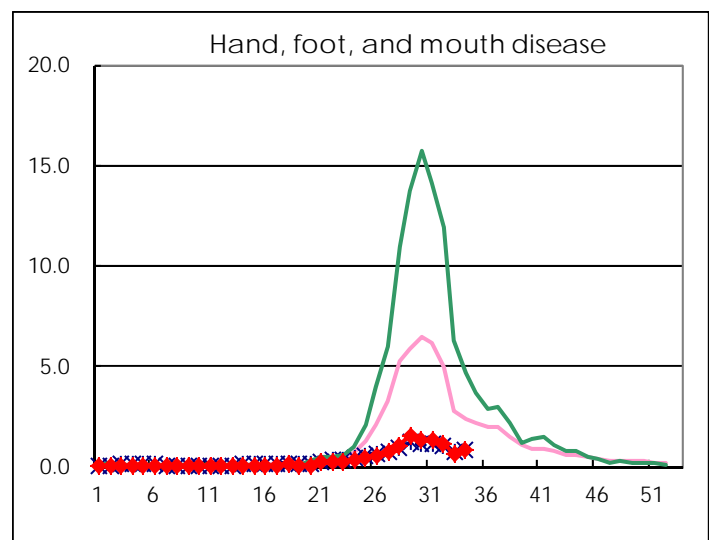
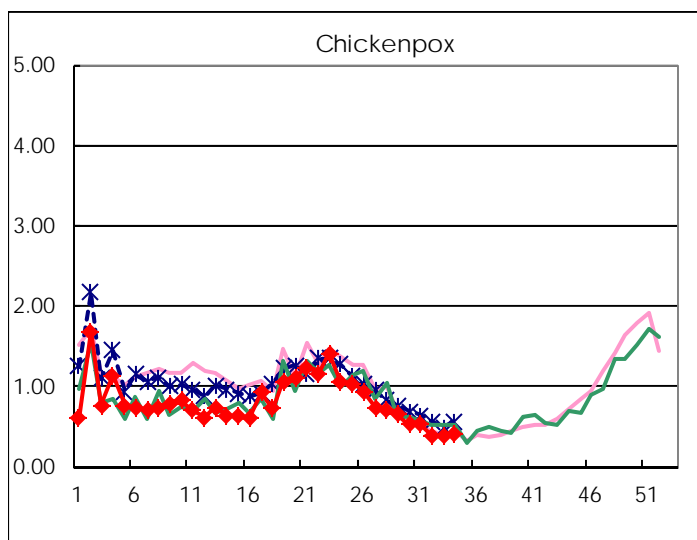
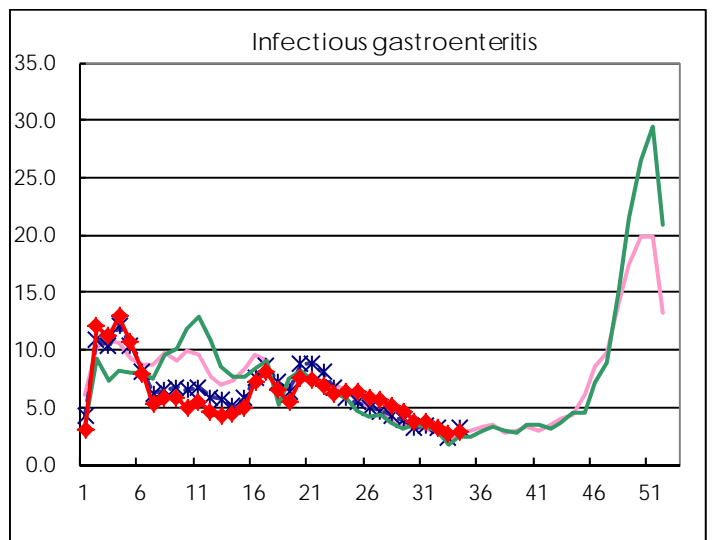
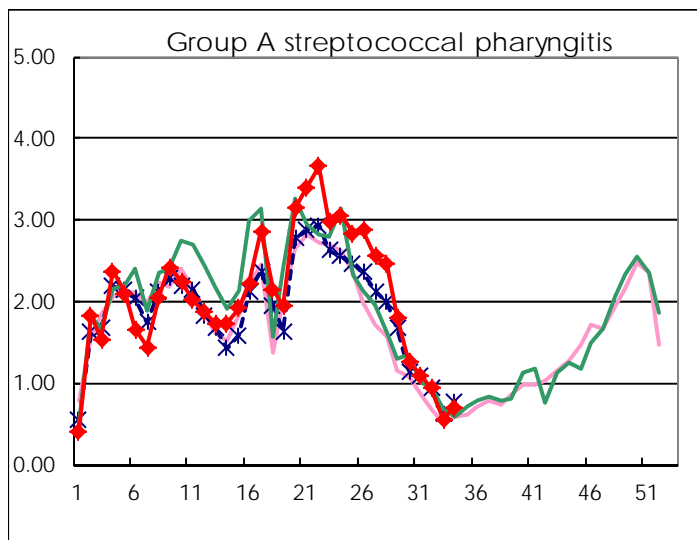
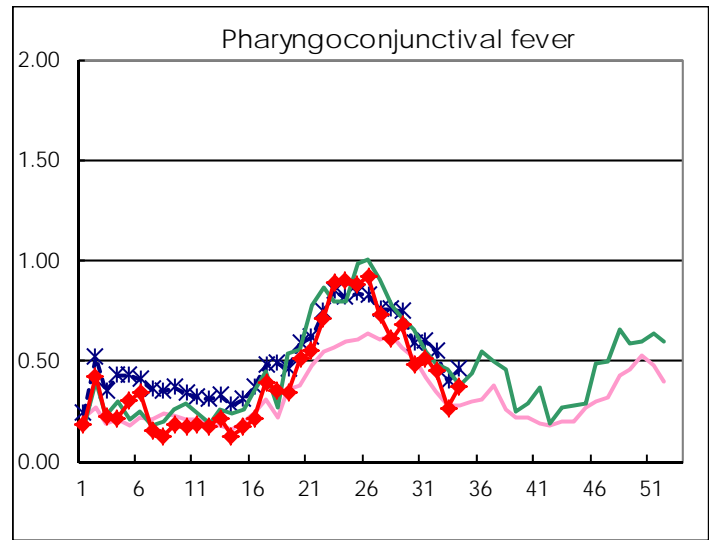
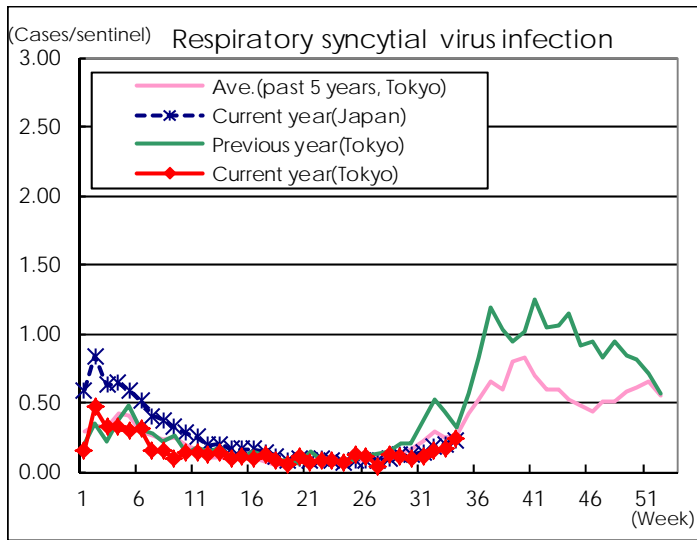
※ Designated infectious disease

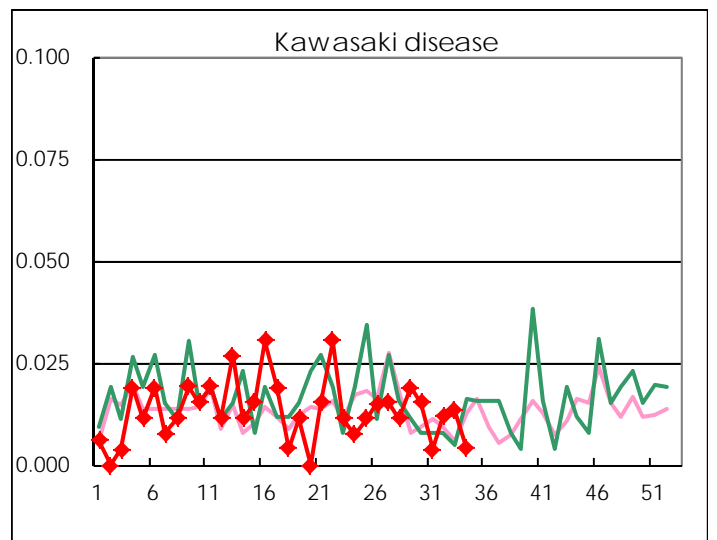
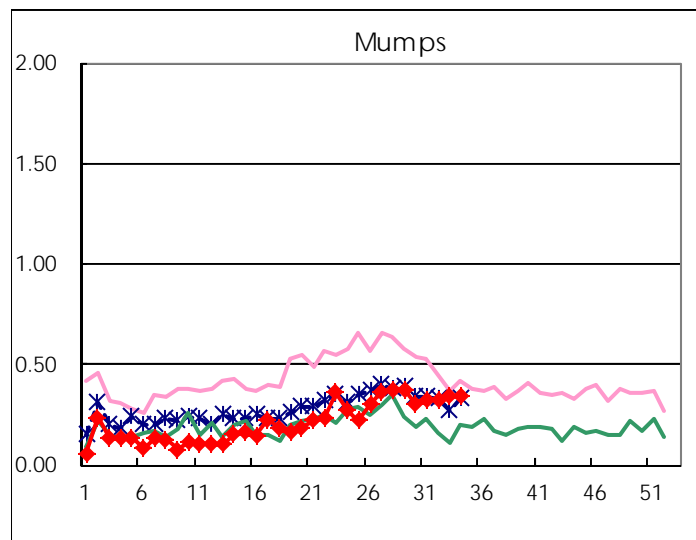
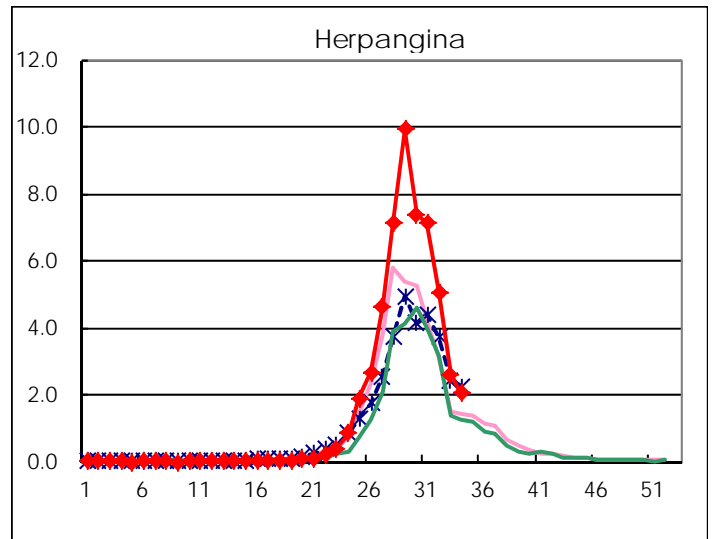
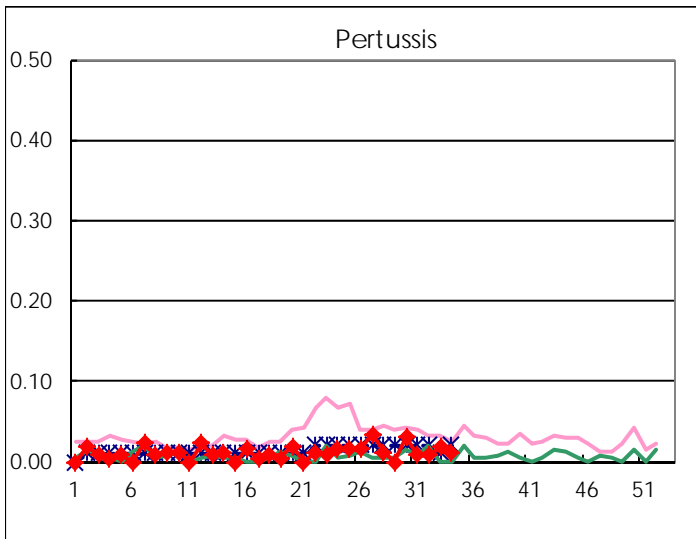
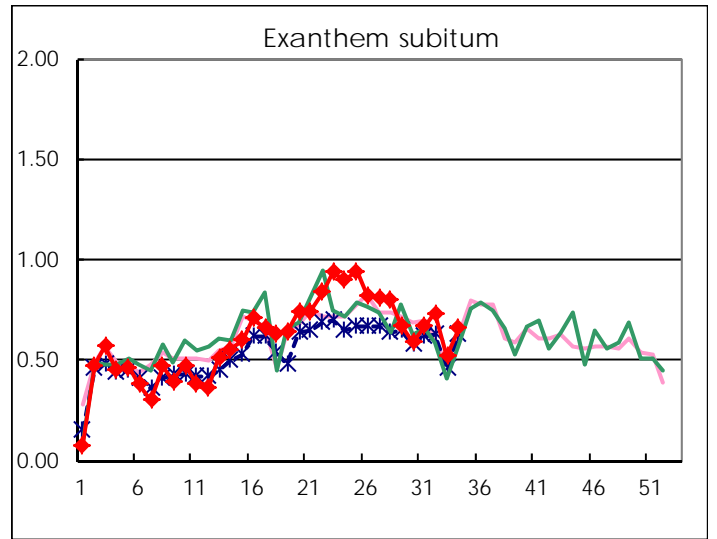
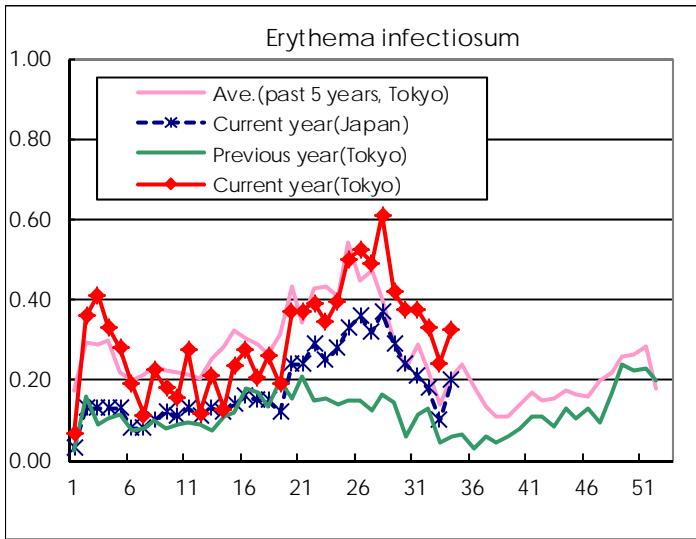
Number of patients with the diseases to be reported
by the designated clinics and hospitals

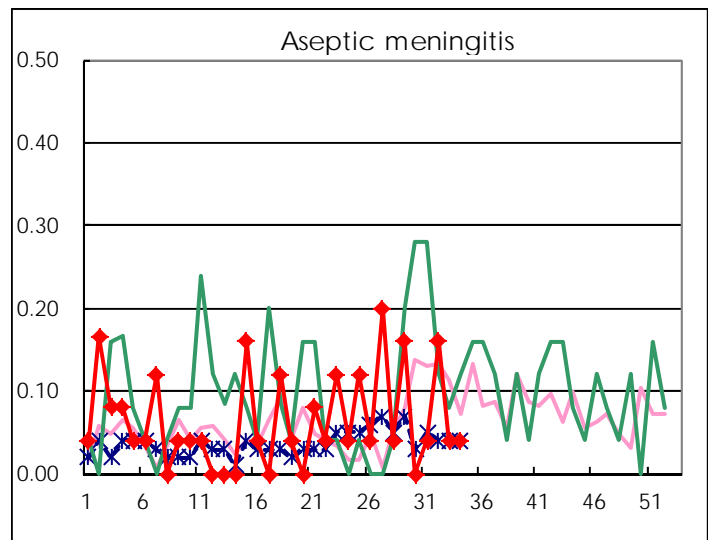
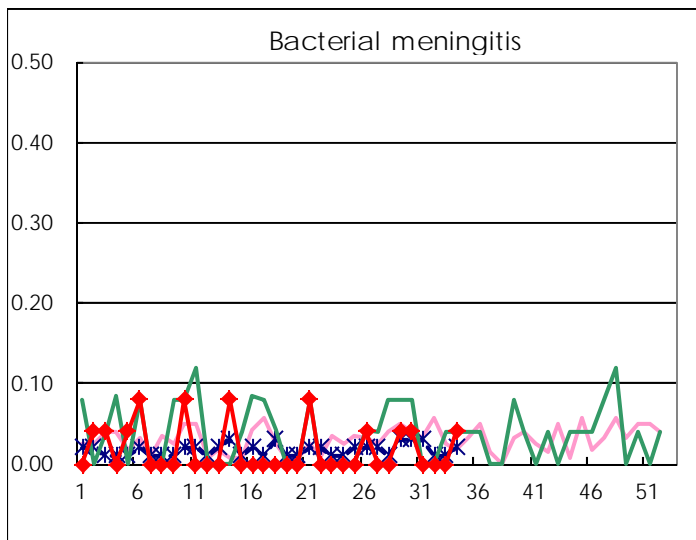
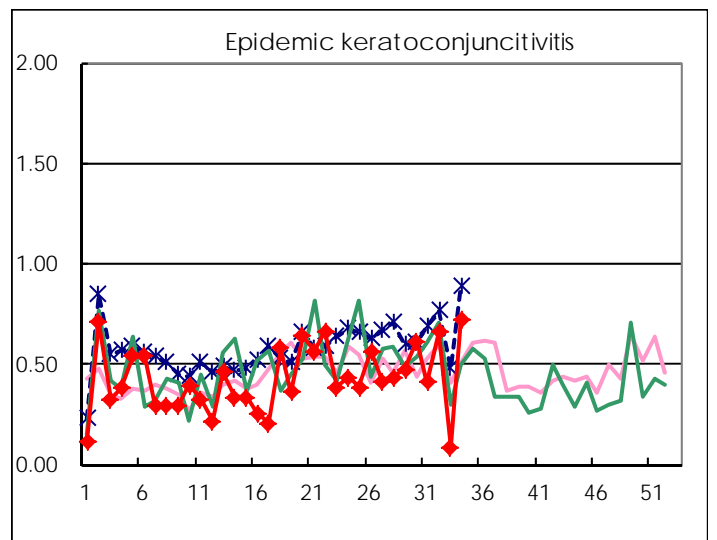
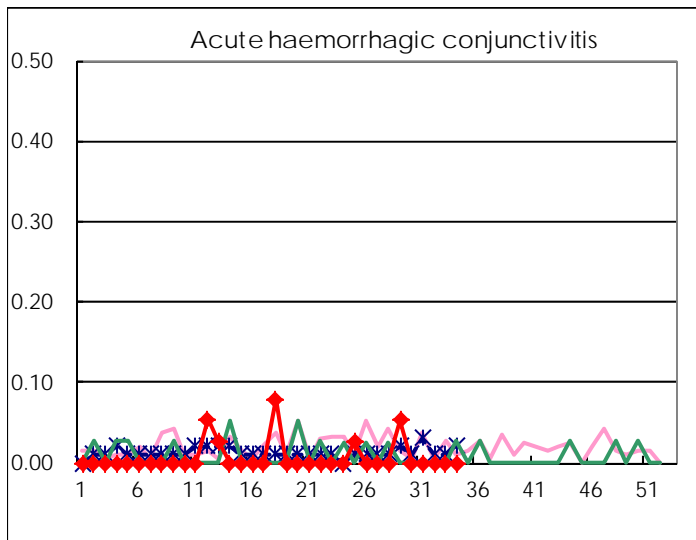
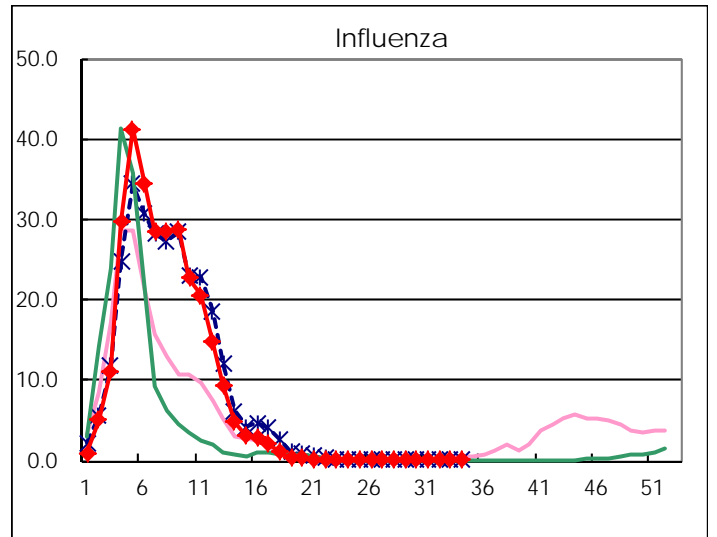
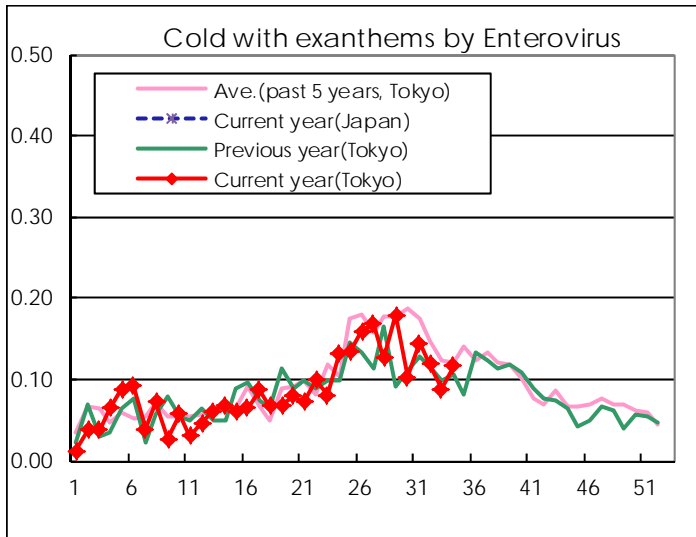
Diseases	Tokyo				
	31st	32nd	33rd	34th	/sentinel
Respiratory syncytial virus infection	27	38	37	60	0.24
Pharyngoconjunctival fever	135	114	60	93	0.38
Group A streptococcal pharyngitis	288	236	127	176	0.71
Infectious gastroenteritis	964	833	609	714	2.88
Chickenpox	138	99	87	100	0.40
Hand, foot, and mouth disease	349	302	137	211	0.85
Erythema infectiosum	98	84	55	81	0.33
Exanthem subitum	175	186	117	163	0.66
Pertussis	2	2	4	3	0.01
Herpangina	1,869	1,277	590	508	2.05
Mumps	85	82	77	85	0.34
Kawasaki disease	1	3	3	1	0.00
Cold with exanthems by Enterovirus	38	30	20	29	0.12
Influenza	4	4	5	3	0.01
Acute hemorrhagic conjunctivitis					
Epidemic keratoconjunctivitis	16	25	3	28	0.72
Bacterial meningitis				1	0.04
Aseptic meningitis	1	4	1	1	0.04
Mycoplasma pneumonia	2	2	1	4	0.16
Chlamydial pneumonia (excluding psittacosis)					
Infectious gastroenteritis (only by Rotavirus)	1				
Influenza-Associated Hospitalizations					

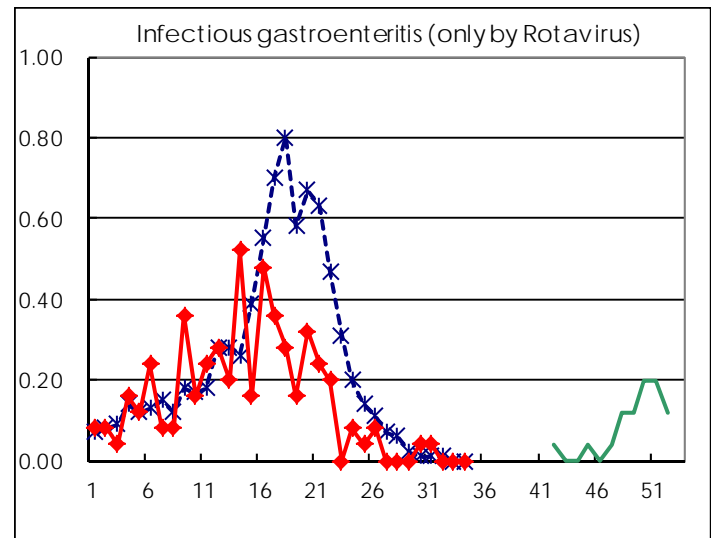
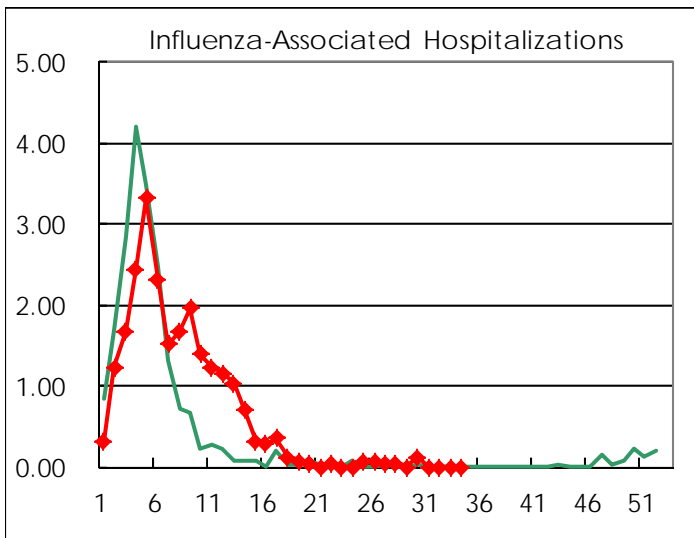
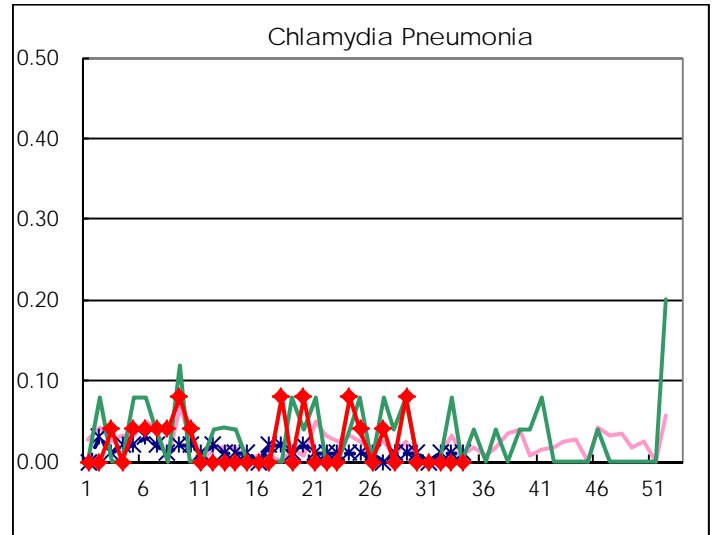
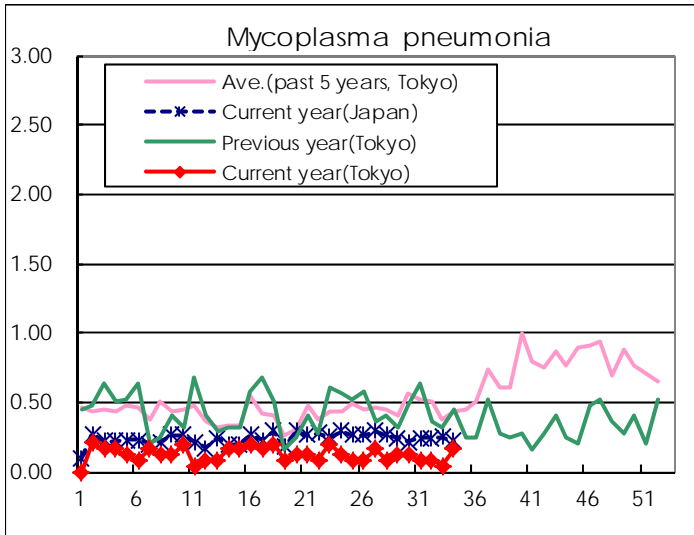
(Blank means 0.)

Disease Trend Graph (weekly reported cases per sentinel in comparison)









Number of sentinel facilities for weekly reporting		
Types of sentinels	Number of sentinels	Sentinels having reported
Pediatric	264	248
Influenza	419	395
Ophthalmic	39	39
Specially-designated	25	25

Tokyo Metropolitan Government
Infectious Disease Surveillance Center