

---

INFECTIOUS DISEASES WEEKLY REPORT

# TOKYO IDWR

Tokyo Metropolitan Infectious Disease Surveillance Center

---

## 4 September 2014 / Number 35

### Surveillance System in Tokyo, Japan

The infectious diseases which all physicians must report

All physicians must report to health centers the incidence of the diseases which are shown at page one. Health centers electronically report the individual cases to Tokyo Metropolitan Infectious Disease Surveillance Center.

The infectious diseases required to be reported by the sentinels

The numbers of patients who visit the sentinel clinics or hospitals during a week are reported to health centers in Tokyo. And they electronically report the numbers to Tokyo Metropolitan Infectious Disease Surveillance Center. We have about 500 sentinel clinics and hospitals in Tokyo.

1st Week is early January and 52nd Week is end of December.

Tokyo Metropolitan Institute of Public Health

TEL:81-3-3363-3213 FAX:81-3-5332-7365

e-mail:[idsc@tokyo-eiken.go.jp](mailto:idsc@tokyo-eiken.go.jp)

URL:[idsc.tokyo-eiken.go.jp/](http://idsc.tokyo-eiken.go.jp/)

---

## Number of patients with the diseases which all physicians must report

Category	Diseases	Tokyo					Japan	
		32nd	33rd	34th	35th	Cum 2014	35th	Cum 2014
I	Ebola hemorrhagic fever							
	Crimean-Congo hemorrhagic fever							
	Smallpox							
	South American hemorrhagic fever							
	Plague							
	Marburg disease							
	Lassa fever							
II	Acute poliomyelitis							
	Tuberculosis	90	90	89	70	2,677	421	17,111
	Diphtheria							
	Severe Acute Respiratory Syndrome(SARS)							
	Avian influenza H5N1							
※	Middle East Respiratory Syndrome (MERS)							
	Avian influenza H7N9							
III	Cholera					3		3
	Shigellosis					23	2	68
	Enterohemorrhagic Escherichia coli infection	16	16	18	13	259	145	2,958
	Typhoid fever			1		11		24
	Paratyphoid fever			1		6		12
IV	Hepatitis E					18		100
	West Nile fever							
	Hepatitis A	1			1	28	3	392
	Echinococcosis							14
	Yellow fever							
	Psittacosis					2		7
	Omsk hemorrhagic fever							
	Relapsing fever							1
	Kyasanur forest disease							
	Q fever							1
	Rabies							
	Coccidioidomycosis							1
	Monkeypox							
	Severe Fever with Thrombocytopenia Syndrome							44
	Hemorrhagic fever with renal syndrome							
	Western equine encephalitis							
	Tick-borne encephalitis							
	Anthrax							
	Chikungunya fever					2	1	8
	Scrub typhus(Tsutsugamushi disease)					5	1	112
	Dengue fever		1	2	19	53	30	134
	Eastern equine encephalitis							
	Avian influenza (excluding H5N1 and H7N9)							
	Nipah virus infection							
	Japanese spotted fever						3	108
	Japanese encephalitis							
	Hantavirus pulmonary syndrome							
	Herpes B virus infection							
	Glanders							
	Brucellosis					4		9
	Venezuelan equine encephalitis							
	Hendra virus infection							
	Epidemic typhus							
	Botulism							1
	Malaria				1	17	2	37
	Tularemia							
	Lyme disease				1	1		8
Lyssavirus infection(excluding rabies)								
Rift valley fever								
Melioidosis								
Legionellosis	1	4	3	2	69	29	784	
Leptospirosis					1	2	13	
Rocky mountain spotted fever								

Category	Diseases	Tokyo				Japan		
		32nd	33rd	34th	35th	Cum 2014	35th	Cum 2014
V	Amebiasis	7	7	4	6	149	18	743
	Viral hepatitis(excluding hepatitis A and E)	1	3			37	1	167
	Acute encephalitis(excluding JE and WNE)	1	2	1		34	7	324
	Cryptosporidiosis					74	1	82
	Creutzfeldt-Jakob disease				1	9	4	119
	Severe invasive streptococcal infections(TSLS)		1		1	36	1	181
	Acquired immunodeficiency syndrome (AIDS)	14	12	8	7	344	21	999
	Giardiasis	1			1	11		41
	Invasive <i>Haemophilus influenzae</i> disease					16	3	132
	Invasive meningococcal disease				1	6	2	25
	Invasive pneumococcal disease	2	2	5		155	5	1,228
	Congenital rubella syndrome					3		8
	Syphilis	14	18	5	10	341	29	1,091
	Tetanus					8	2	87
	Vancomycin-resistant <i>S. aureus</i> infection							
	Vancomycin-resistant Enterococcus infection					3		34
	Rubella		1	2		79	1	268
Measles				2	86	4	436	

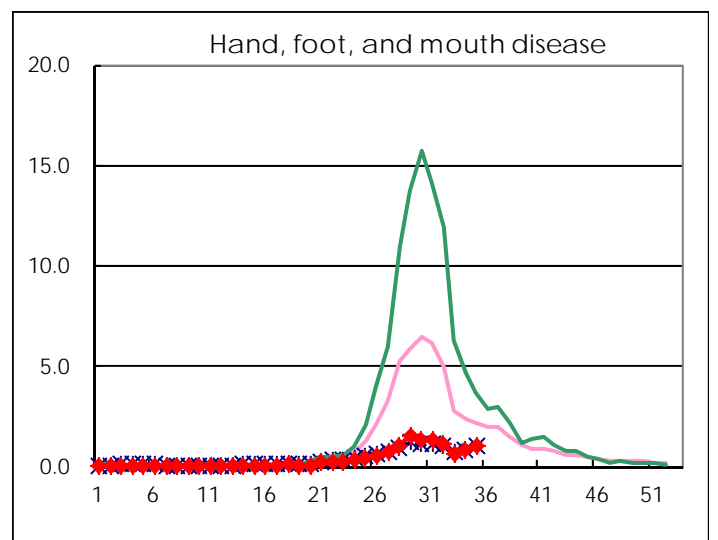
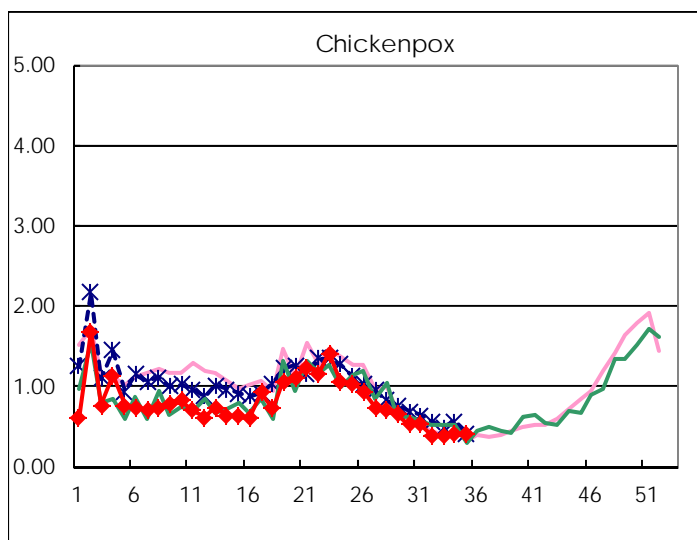
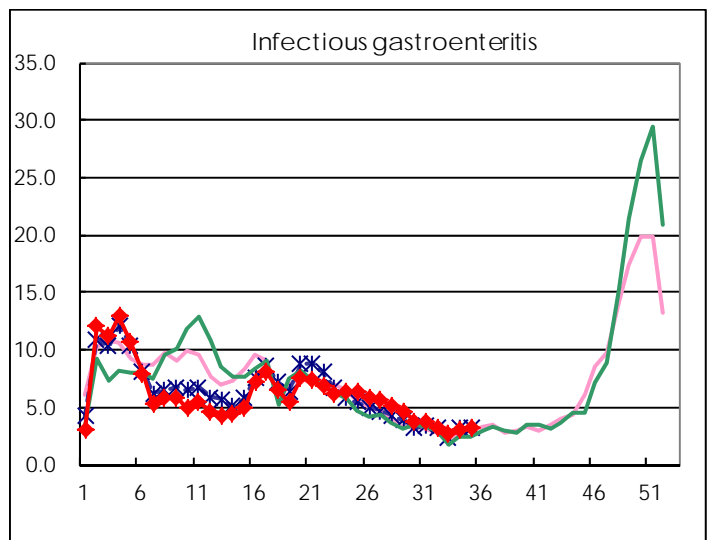
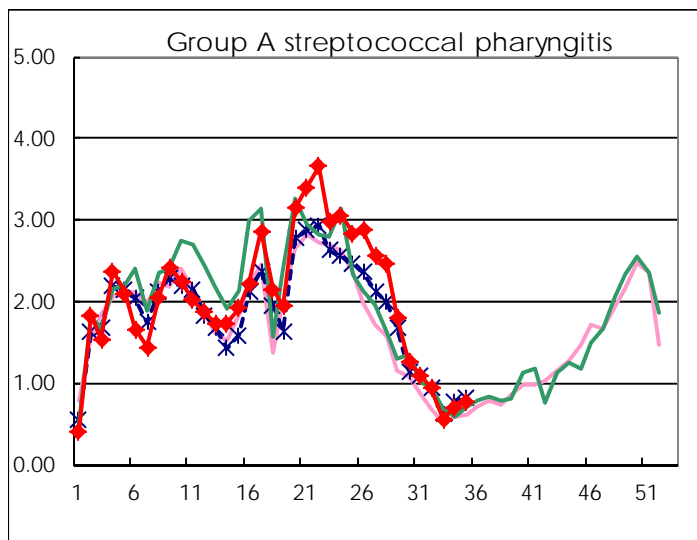
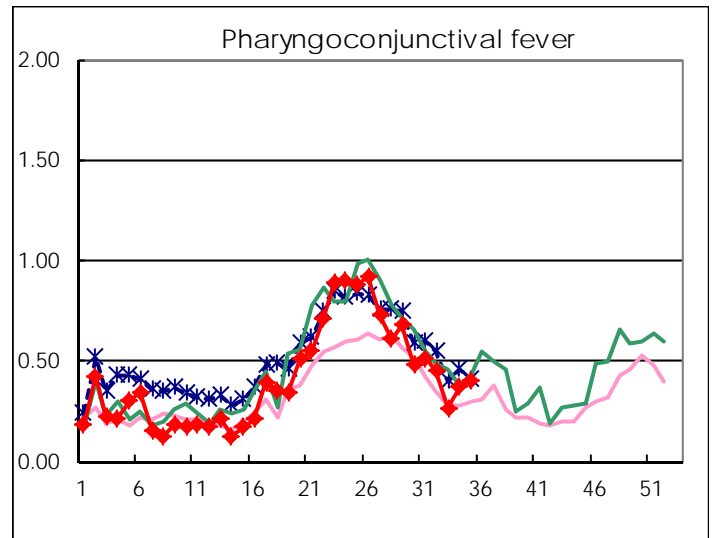
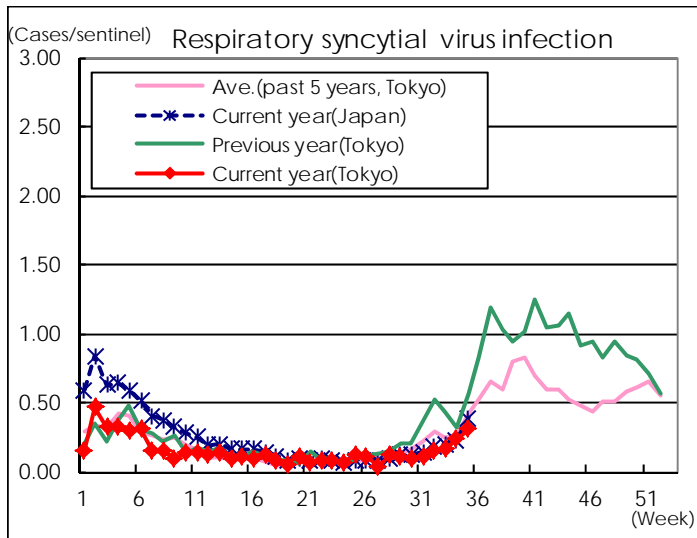
※ Designated infectious disease

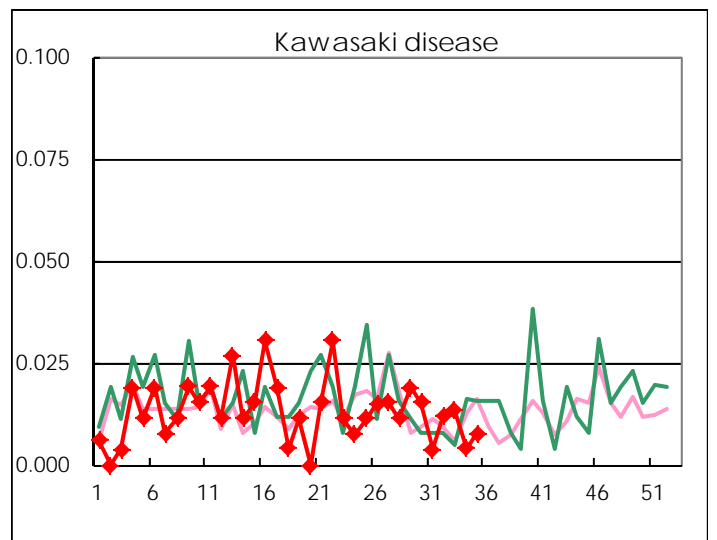
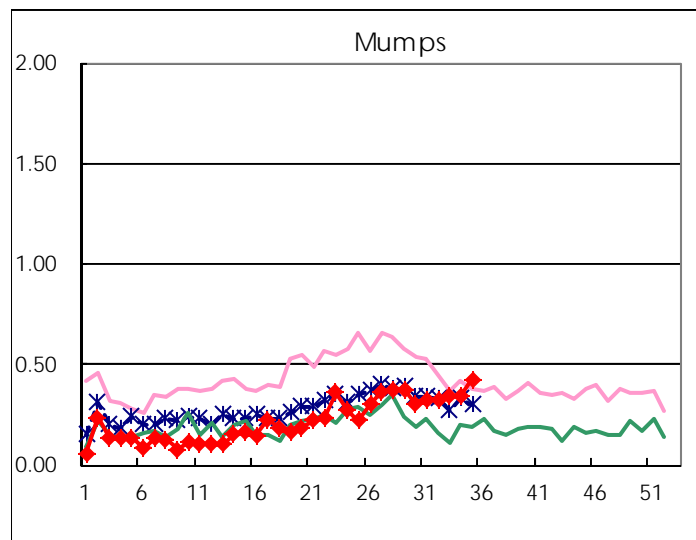
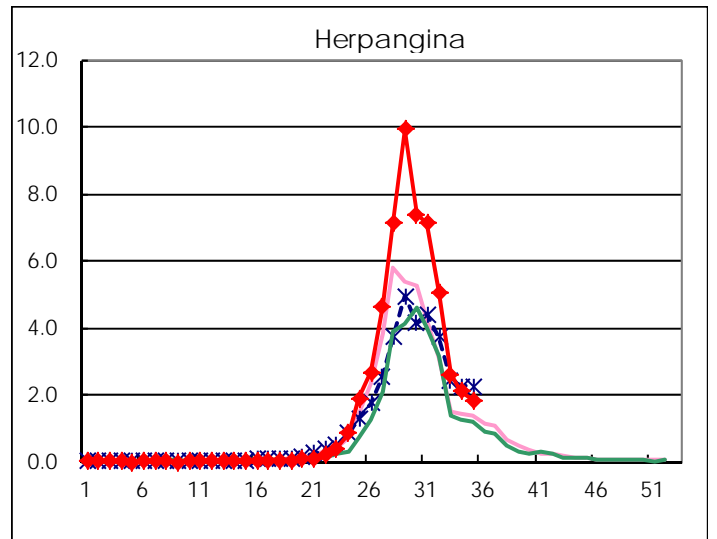
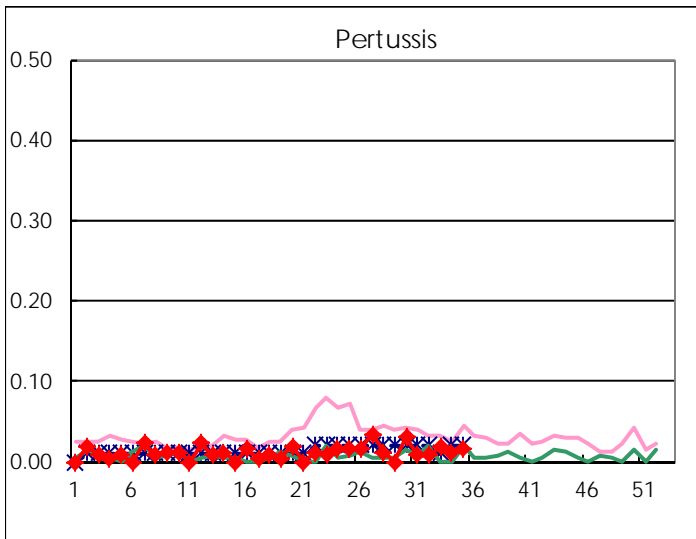
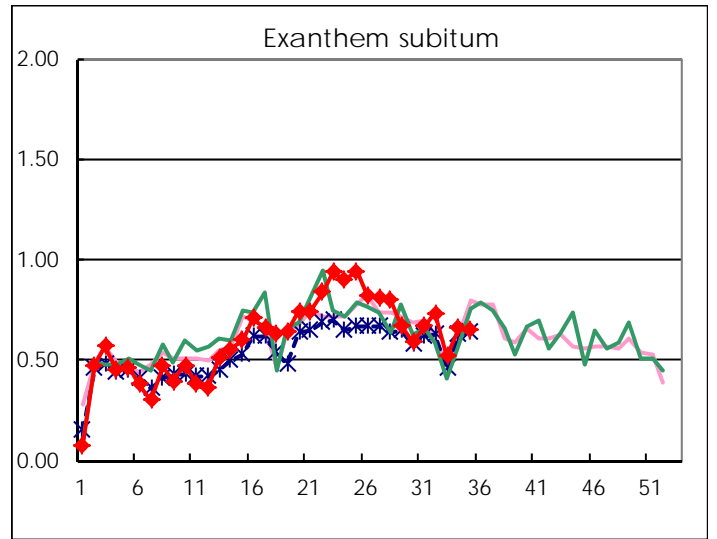
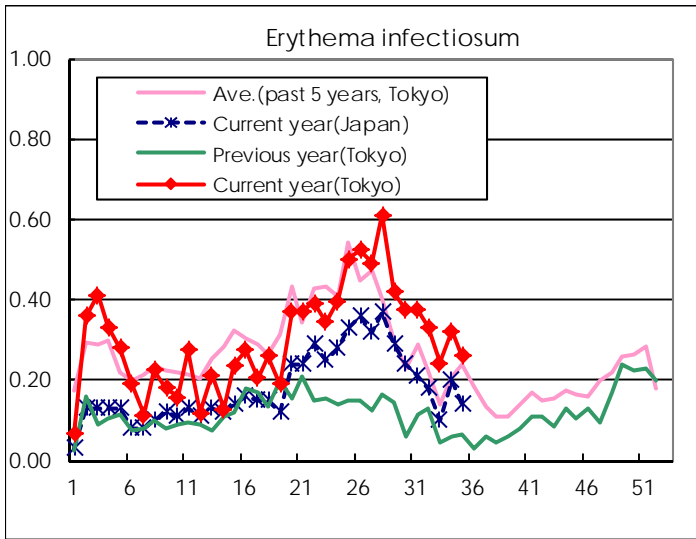
Number of patients with the diseases to be reported  
by the designated clinics and hospitals

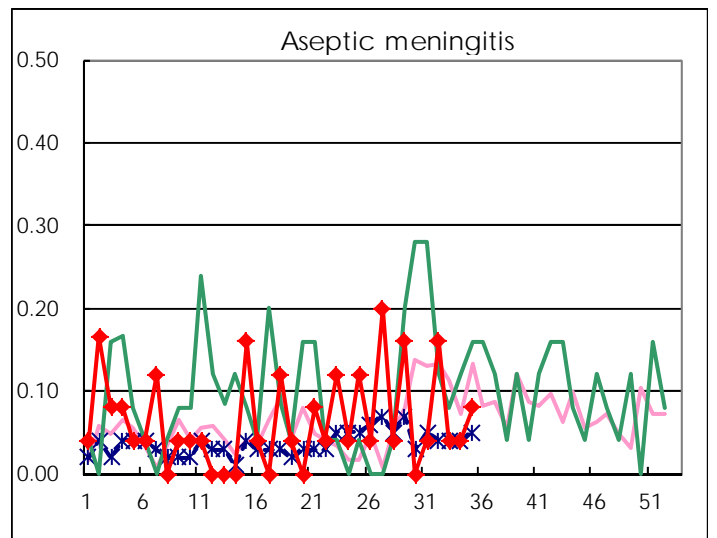
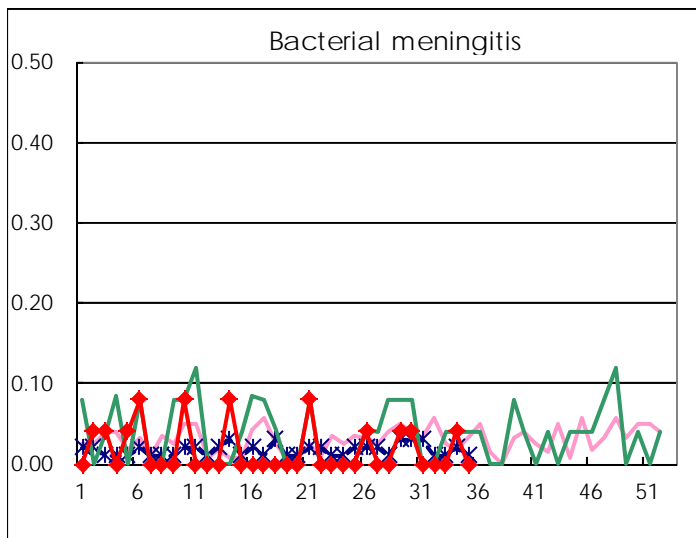
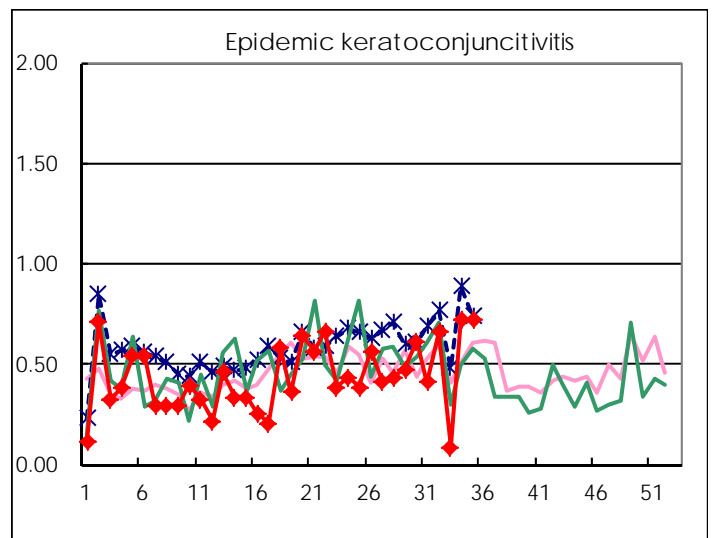
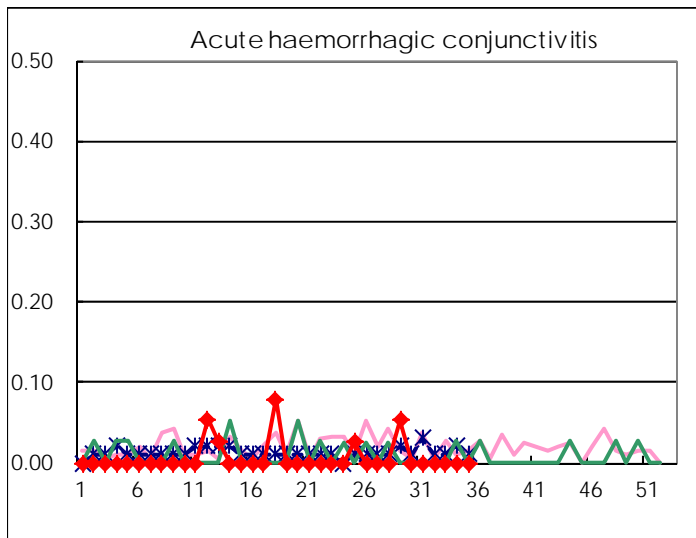
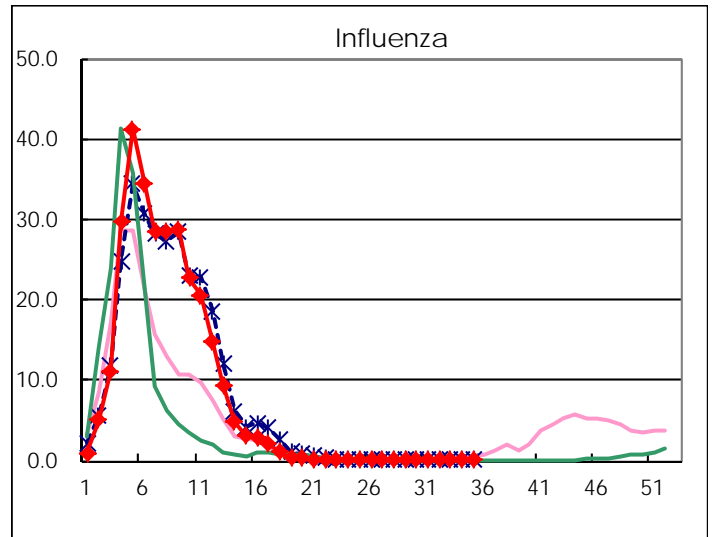
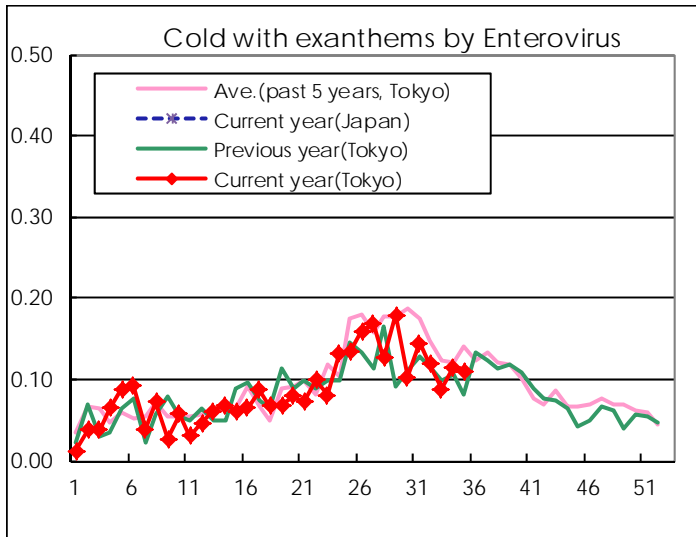
Diseases	Tokyo				
	32nd	33rd	34th	35th	/sentinel
Respiratory syncytial virus infection	38	37	60	79	0.31
Pharyngoconjunctival fever	114	60	93	105	0.41
Group A streptococcal pharyngitis	236	127	176	201	0.78
Infectious gastroenteritis	833	609	748	829	3.21
Chickenpox	99	87	102	104	0.40
Hand, foot, and mouth disease	302	137	215	262	1.02
Erythema infectiosum	84	55	81	67	0.26
Exanthem subitum	186	117	165	167	0.65
Pertussis	2	4	3	4	0.02
Herpangina	1,277	590	530	470	1.82
Mumps	82	77	85	110	0.43
Kawasaki disease	3	3	1	2	0.01
Cold with exanthems by Enterovirus	30	20	29	28	0.11
Influenza	4	5	3	6	0.01
Acute hemorrhagic conjunctivitis					
Epidemic keratoconjunctivitis	25	3	28	28	0.72
Bacterial meningitis			1		
Aseptic meningitis	4	1	1	2	0.08
Mycoplasma pneumonia	2	1	5	5	0.20
Chlamydial pneumonia (excluding psittacosis)					
Infectious gastroenteritis (only by Rotavirus)					
Influenza-Associated Hospitalizations					

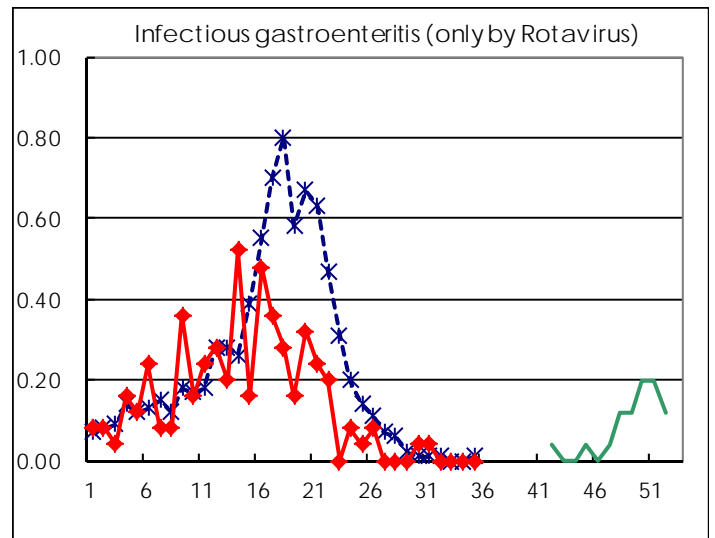
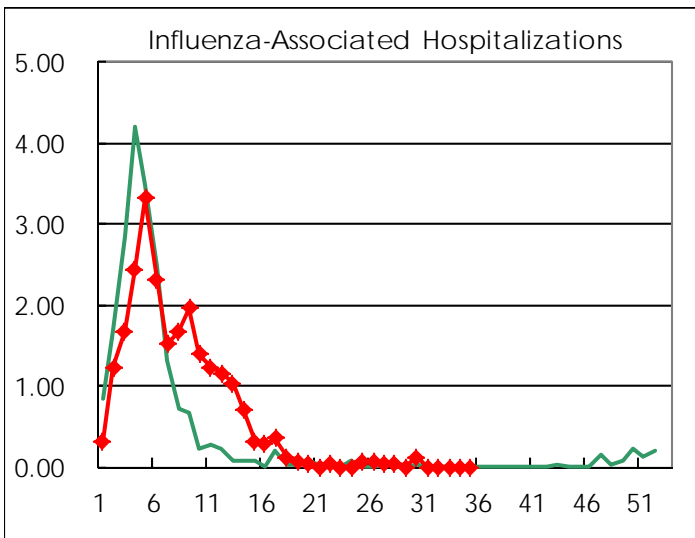
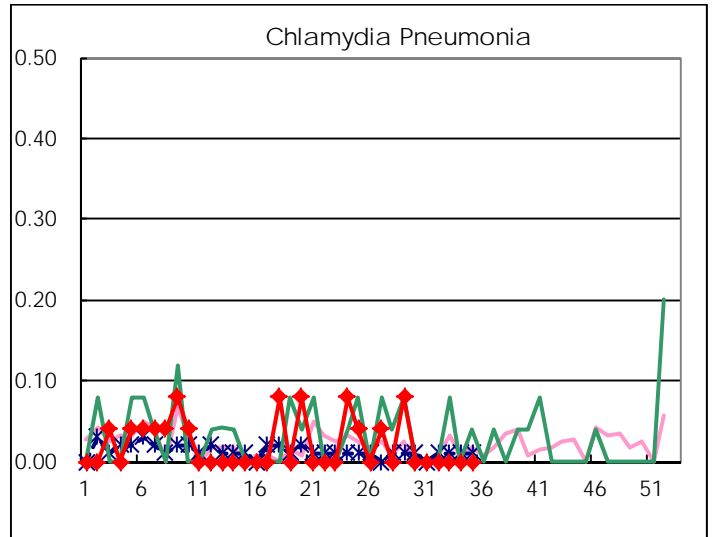
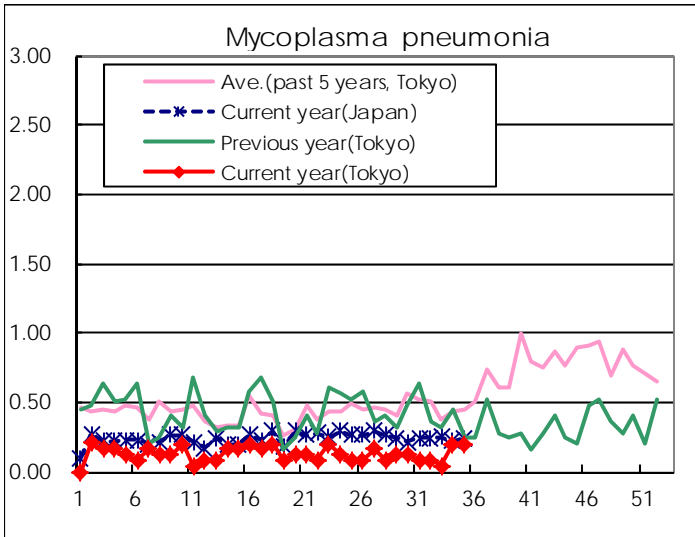
( Blank means 0. )

# Disease Trend Graph (weekly reported cases per sentinel in comparison)









Number of sentinel facilities for weekly reporting		
Types of sentinels	Number of sentinels	Sentinels having reported
Pediatric	264	258
Influenza	419	404
Ophthalmic	39	39
Specially-designated	25	25

Tokyo Metropolitan Government  
**Infectious Disease Surveillance Center**