
INFECTIOUS DISEASES WEEKLY REPORT

TOKYO iDWR

Tokyo Metropolitan Infectious Disease Surveillance Center

18 September 2014 / Number 37

Surveillance System in Tokyo, Japan

The infectious diseases which all physicians must report

All physicians must report to health centers the incidence of the diseases which are shown at page one. Health centers electronically report the individual cases to Tokyo Metropolitan Infectious Disease Surveillance Center.

The infectious diseases required to be reported by the sentinels

The numbers of patients who visit the sentinel clinics or hospitals during a week are reported to health centers in Tokyo. And they electronically report the numbers to Tokyo Metropolitan Infectious Disease Surveillance Center. We have about 500 sentinel clinics and hospitals in Tokyo.

1st Week is early January and 52nd Week is end of December.

Tokyo Metropolitan Institute of Public Health

TEL:81-3-3363-3213 FAX:81-3-5332-7365

e-mail:idsc@tokyo-eiken.go.jp

URL:idsc.tokyo-eiken.go.jp/

Number of patients with the diseases which all physicians must report

Category	Diseases	Tokyo				Japan		
		34th	35th	36th	37th	Cum 2014	37th	Cum 2014
I	Ebola hemorrhagic fever							
	Crimean-Congo hemorrhagic fever							
	Smallpox							
	South American hemorrhagic fever							
	Plague							
	Marburg disease							
	Lassa fever							
II	Acute poliomyelitis							
	Tuberculosis	88	83	88	75	2,861	393	18,194
	Diphtheria							
	Severe Acute Respiratory Syndrome(SARS)							
	Avian influenza H5N1							
※	Middle East Respiratory Syndrome (MERS)							
	Avian influenza H7N9							
III	Cholera					3		3
	Shigellosis			4		27	2	76
	Enterohemorrhagic Escherichia coli infection	18	13	27	9	295	86	3,226
	Typhoid fever	1		5	3	19	2	34
	Paratyphoid fever	1		1		7		13
IV	Hepatitis E				1	19	1	106
	West Nile fever							
	Hepatitis A		1			28	3	396
	Echinococcosis							14
	Yellow fever							
	Psittacosis					2		7
	Omsk hemorrhagic fever							
	Relapsing fever							1
	Kyasanur forest disease							
	Q fever							1
	Rabies							
	Coccidioidomycosis							1
	Monkeypox							
	Severe Fever with Thrombocytopenia Syndrome						2	55
	Hemorrhagic fever with renal syndrome							
	Western equine encephalitis							
	Tick-borne encephalitis							
	Anthrax							
	Chikungunya fever					2		9
	Scrub typhus(Tsutsugamushi disease)					5		114
	Dengue fever	2	19	35	26	114	41	247
	Eastern equine encephalitis							
	Avian influenza (excluding H5N1 and H7N9)							
	Nipah virus infection							
	Japanese spotted fever						11	138
	Japanese encephalitis							1
	Hantavirus pulmonary syndrome							
	Herpes B virus infection							
	Glanders							
	Brucellosis					4		10
	Venezuelan equine encephalitis							
	Hendra virus infection							
	Epidemic typhus							
Botulism							1	
Malaria		1	2	4	23	4	49	
Tularemia							1	
Lyme disease		1			1		9	
Lyssavirus infection(excluding rabies)								
Rift valley fever								
Melioidosis								
Legionellosis	3	2	2	1	72	21	844	
Leptospirosis				1	2	1	16	
Rocky mountain spotted fever								

Category	Diseases	Tokyo					Japan	
		34th	35th	36th	37th	Cum 2014	37th	Cum 2014
V	Amebiasis	4	7	6	6	162	13	792
	Viral hepatitis(excluding hepatitis A and E)			1		38	3	173
	Acute encephalitis(excluding JE and WNE)	1		2		36	4	341
	Cryptosporidiosis			1		75		82
	Creutzfeldt-Jakob disease		1			9		122
	Severe invasive streptococcal infections(TSLS)		1	1	1	38	3	190
	Acquired immunodeficiency syndrome (AIDS)	8	7	14	8	366	18	1,068
	Giardiasis		1		1	12	1	44
	Invasive <i>Haemophilus influenzae</i> disease			1	1	18	1	138
	Invasive meningococcal disease		1			6		25
	Invasive pneumococcal disease	5		1		156	10	1,257
	Congenital rubella syndrome					3		8
	Syphilis	5	10	9	9	359	26	1,163
	Tetanus				1	9	4	91
	Vancomycin-resistant <i>S. aureus</i> infection							
	Vancomycin-resistant Enterococcus infection					3		35
	Rubella	2		5	1	85	5	283
	Measles		2	1		87	1	446

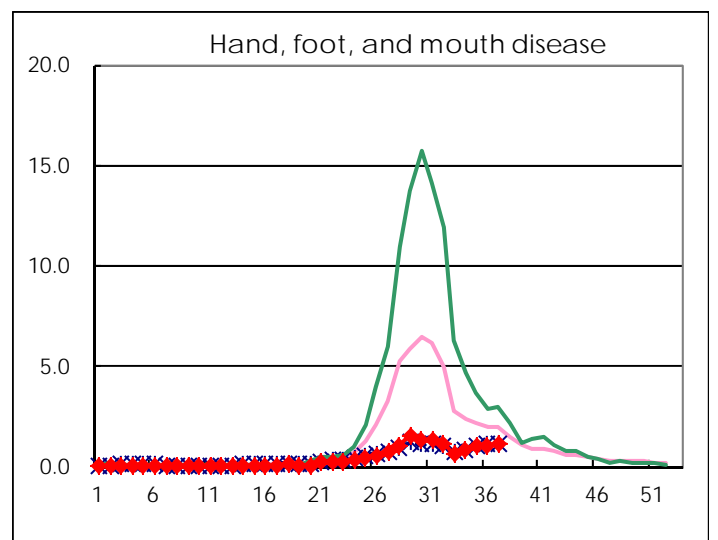
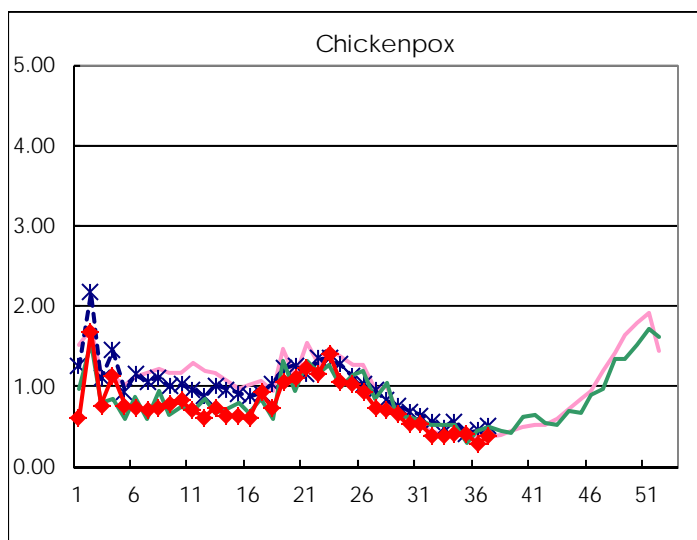
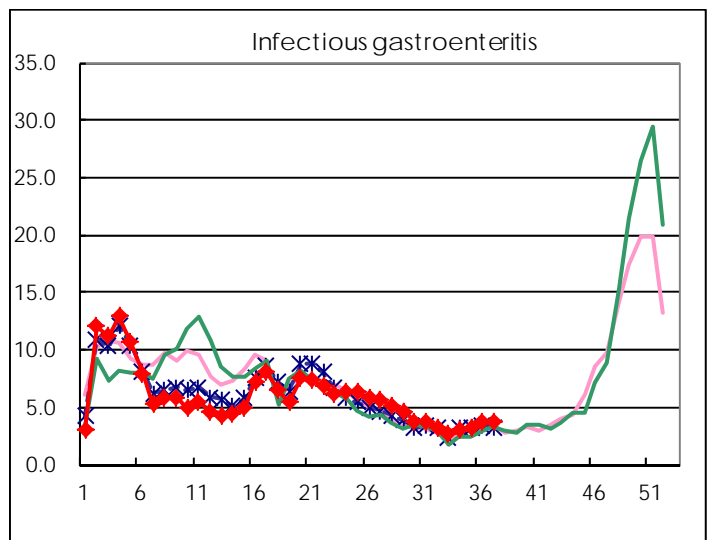
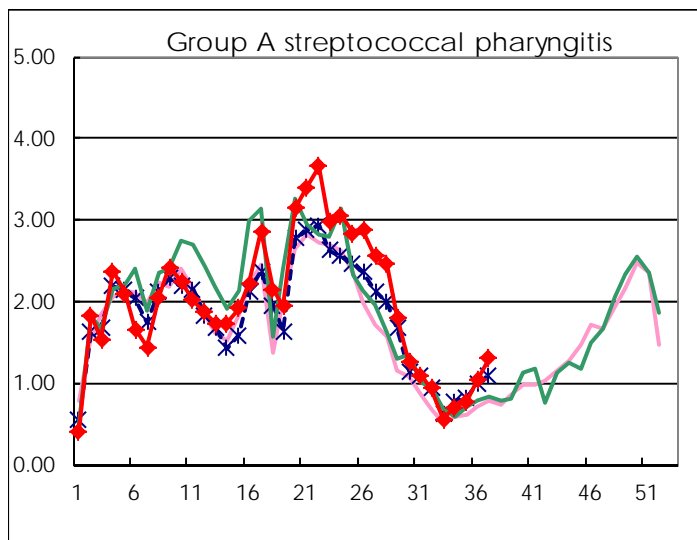
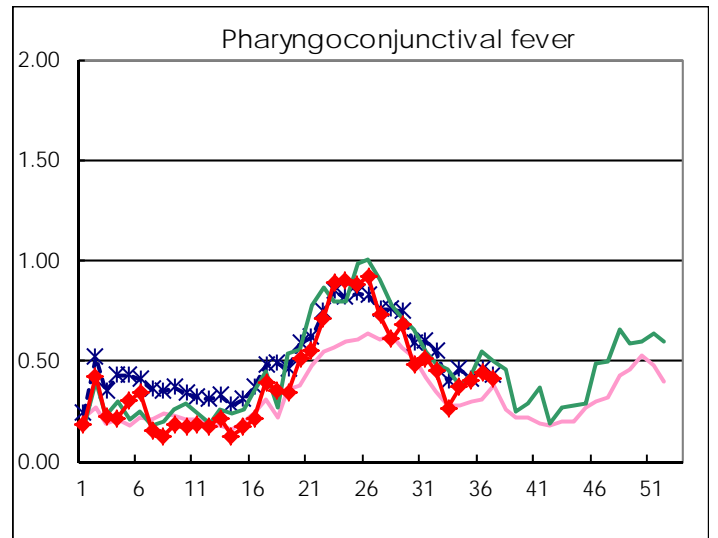
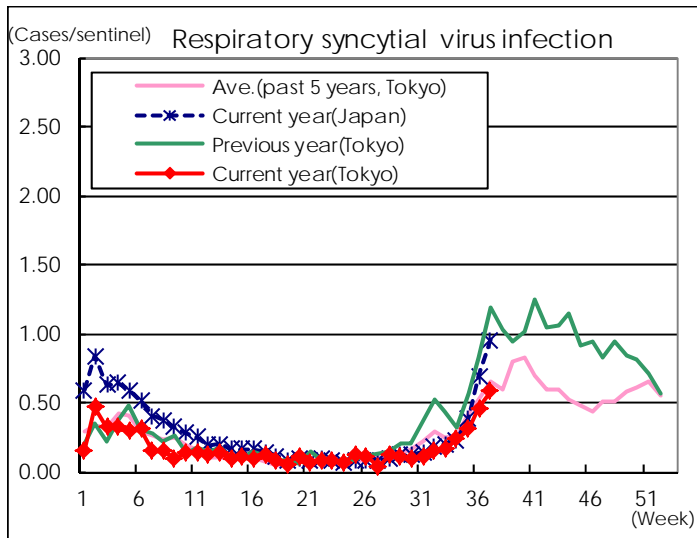
※ Designated infectious disease

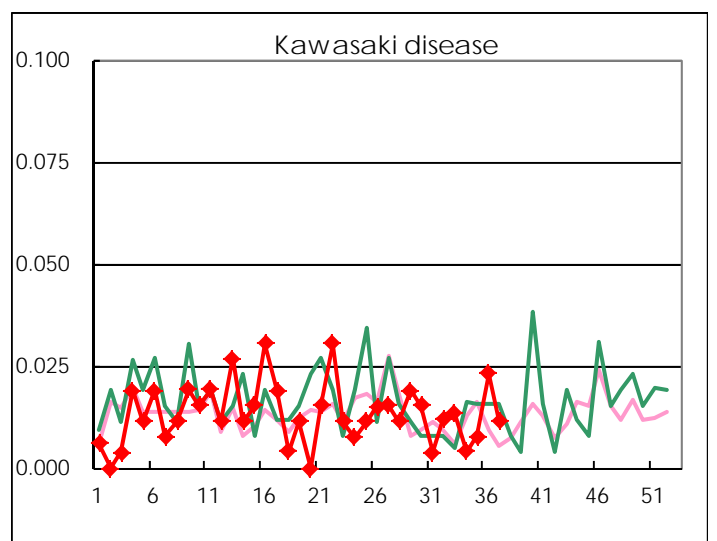
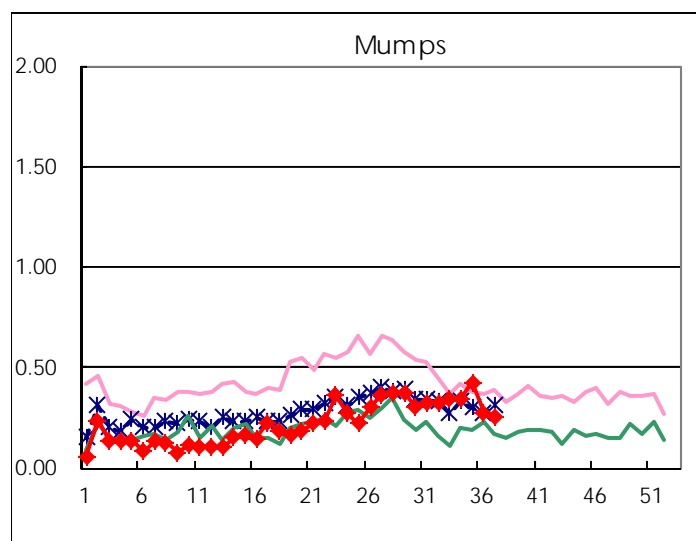
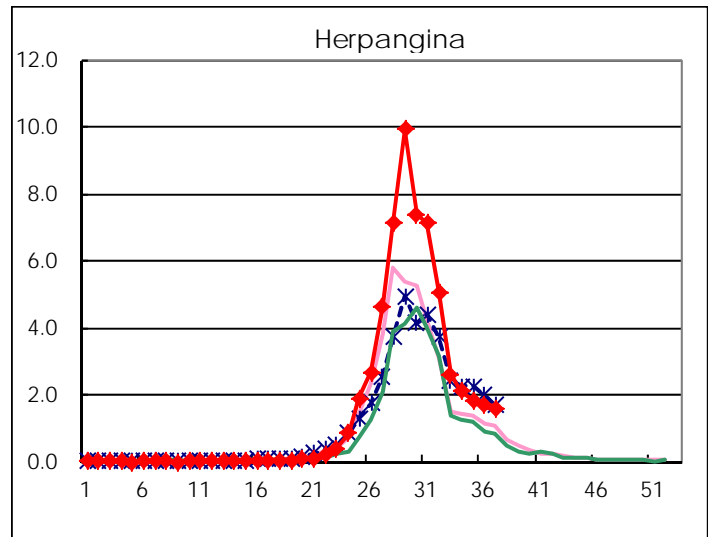
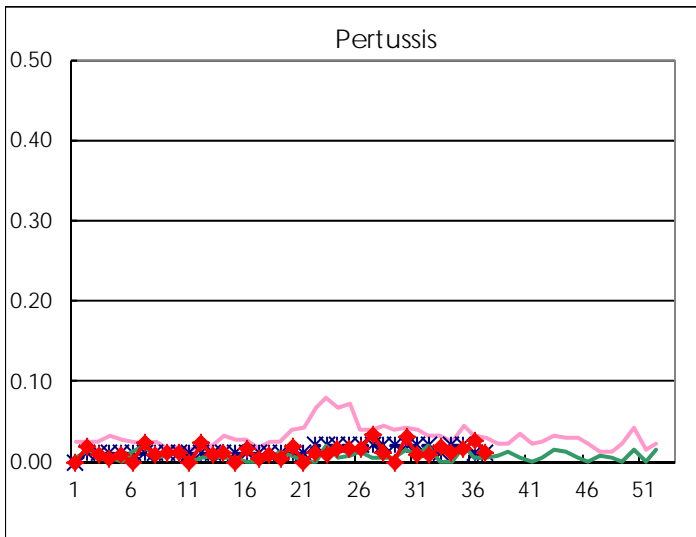
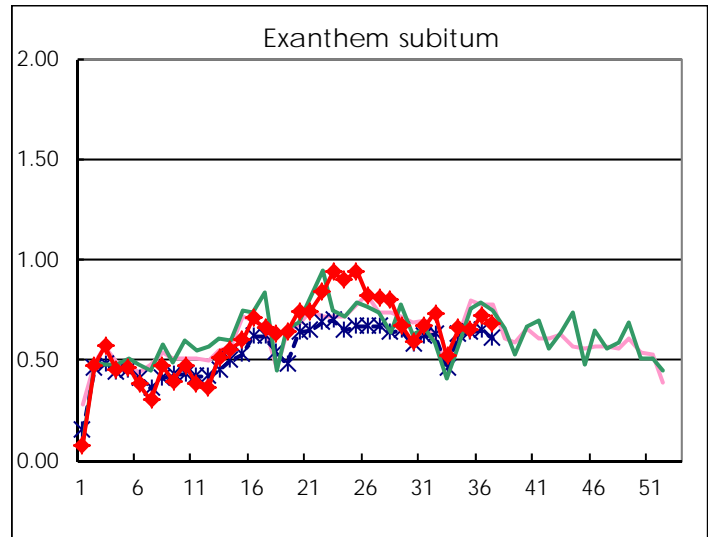
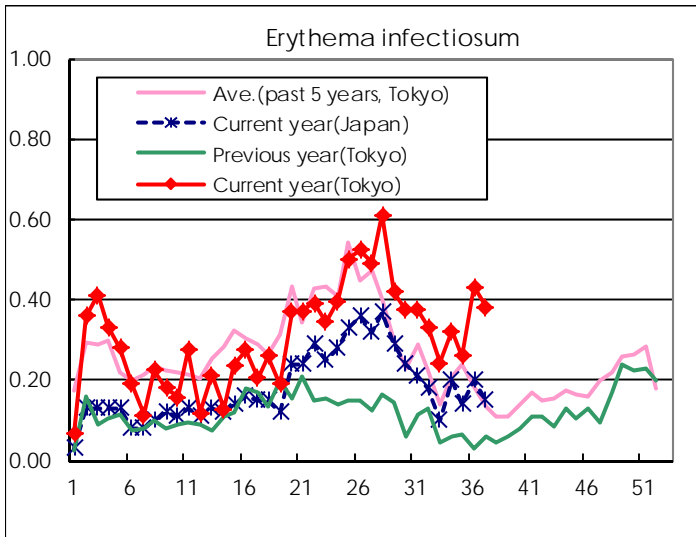
Number of patients with the diseases to be reported
by the designated clinics and hospitals

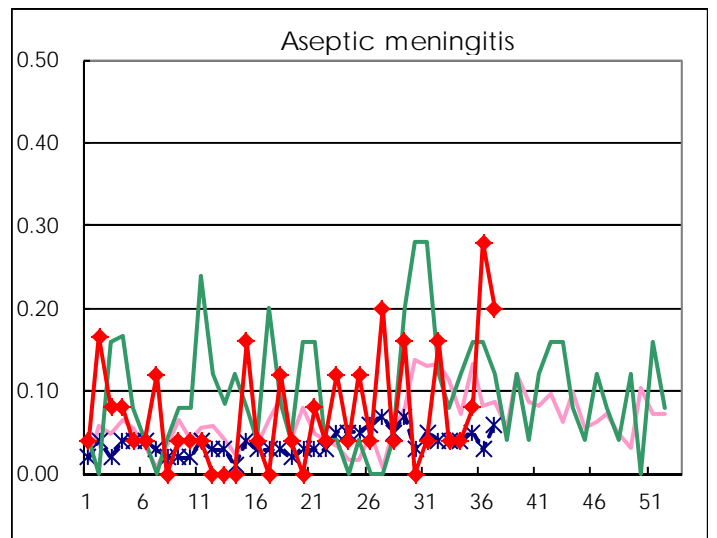
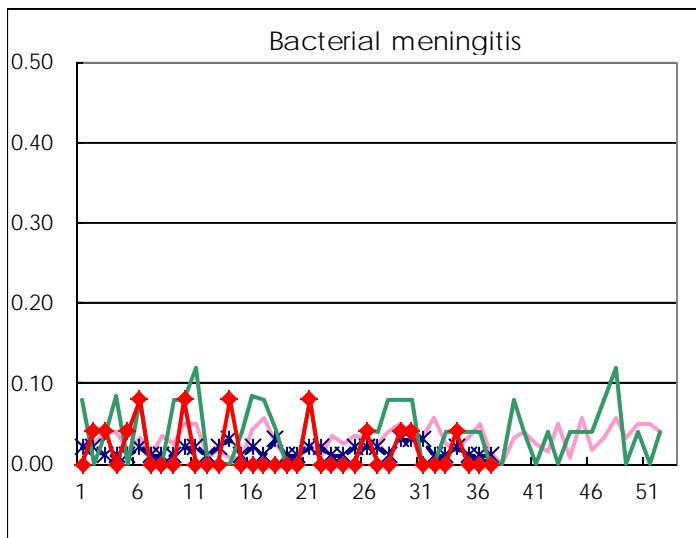
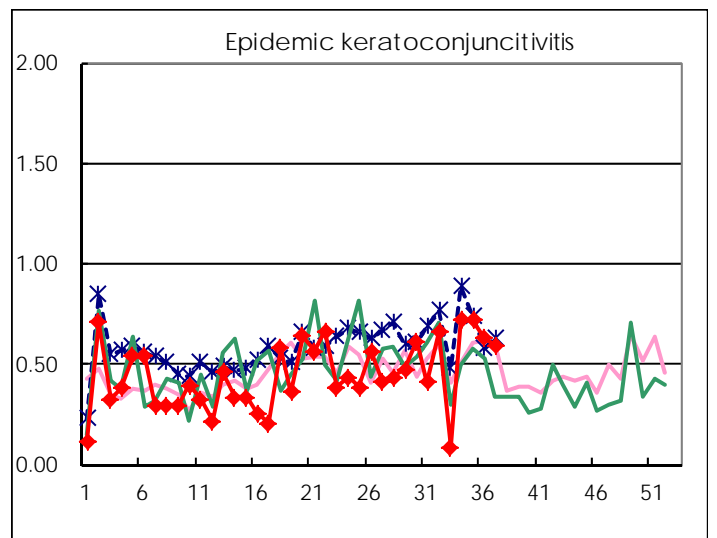
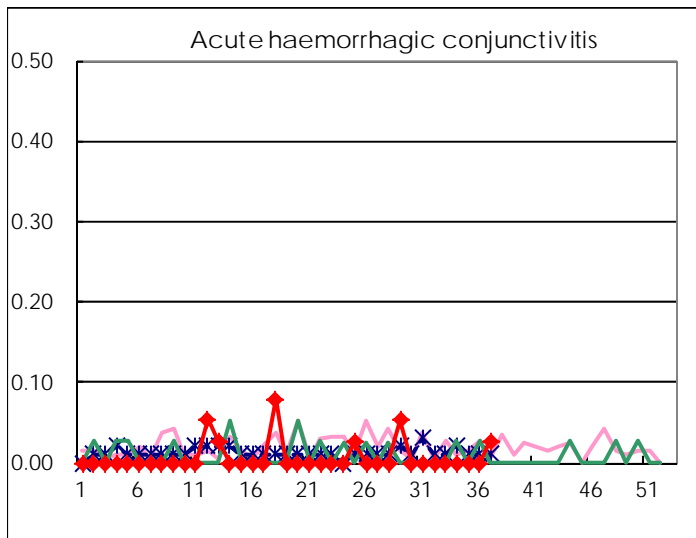
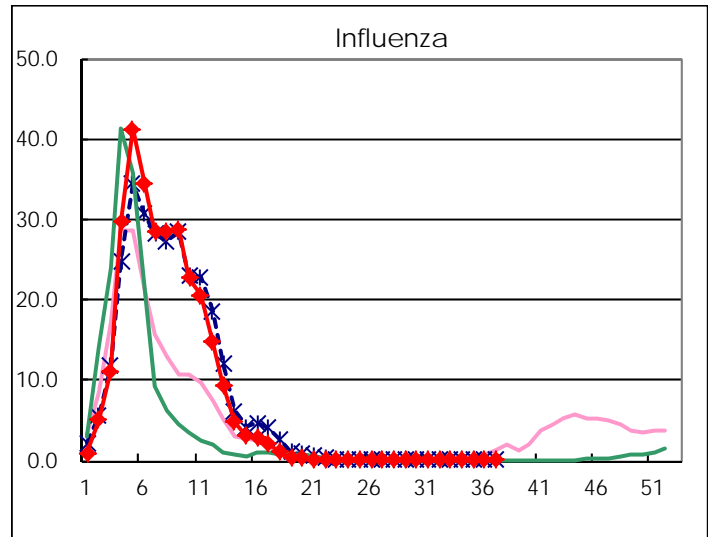
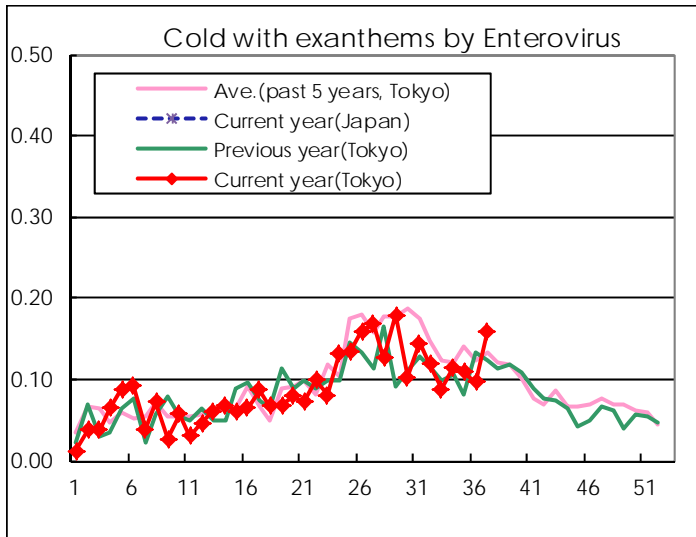
Diseases	Tokyo				
	34th	35th	36th	37th	/sentinel
Respiratory syncytial virus infection	60	79	120	150	0.58
Pharyngoconjunctival fever	93	105	116	107	0.42
Group A streptococcal pharyngitis	176	201	268	335	1.30
Infectious gastroenteritis	748	829	960	941	3.66
Chickenpox	102	103	77	97	0.38
Hand, foot, and mouth disease	215	263	261	304	1.18
Erythema infectiosum	81	67	112	98	0.38
Exanthem subitum	165	167	187	174	0.68
Pertussis	3	4	7	3	0.01
Herpangina	530	470	446	401	1.56
Mumps	85	110	72	66	0.26
Kawasaki disease	1	2	6	3	0.01
Cold with exanthems by Enterovirus	29	28	25	41	0.16
Influenza	3	6	6	16	0.04
Acute hemorrhagic conjunctivitis				1	0.03
Epidemic keratoconjunctivitis	28	28	24	22	0.59
Bacterial meningitis	1				
Aseptic meningitis	1	2	7	5	0.20
Mycoplasma pneumonia	5	5	5	9	0.36
Chlamydial pneumonia (excluding psittacosis)				1	0.04
Infectious gastroenteritis (only by Rotavirus)					
Influenza-Associated Hospitalizations					

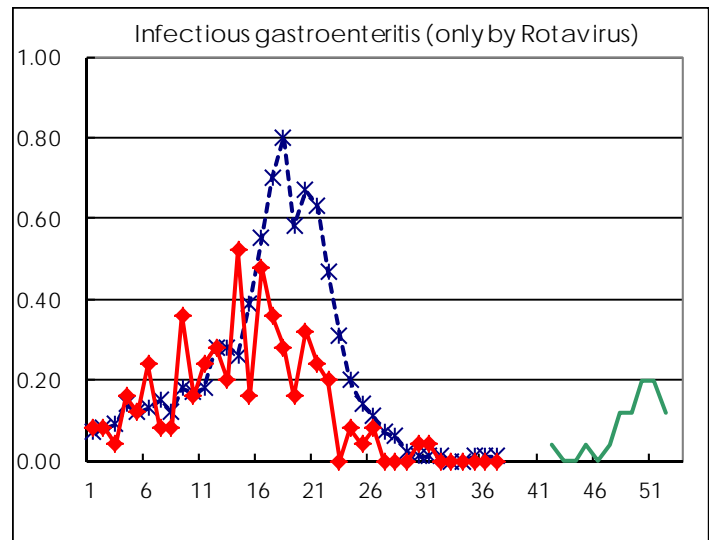
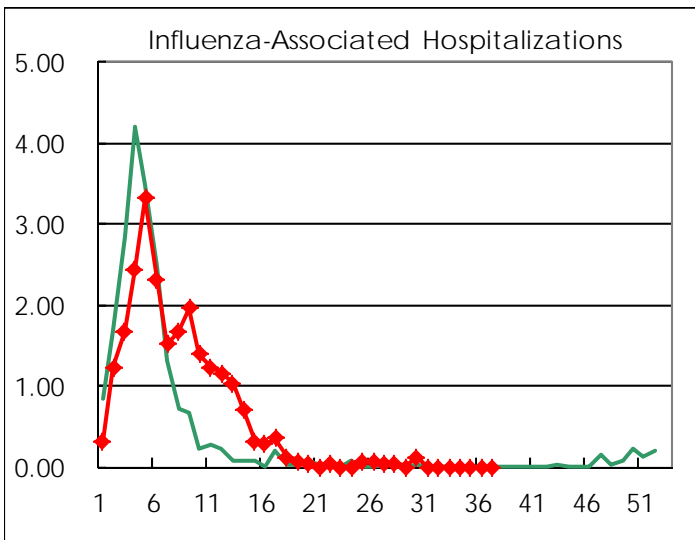
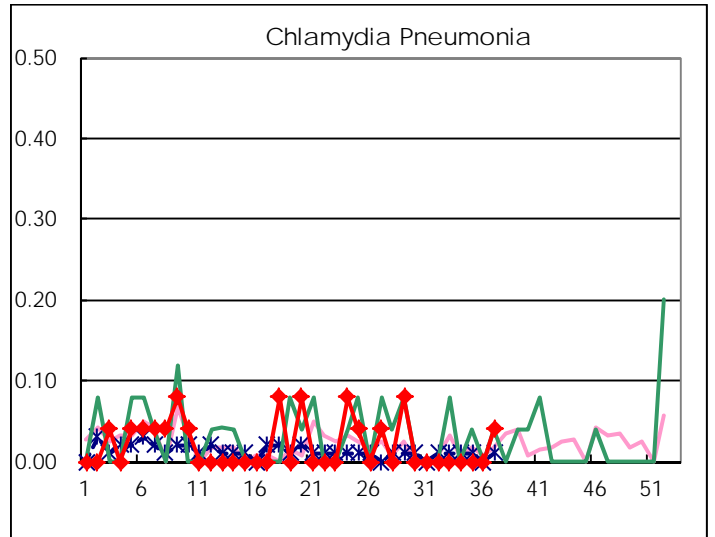
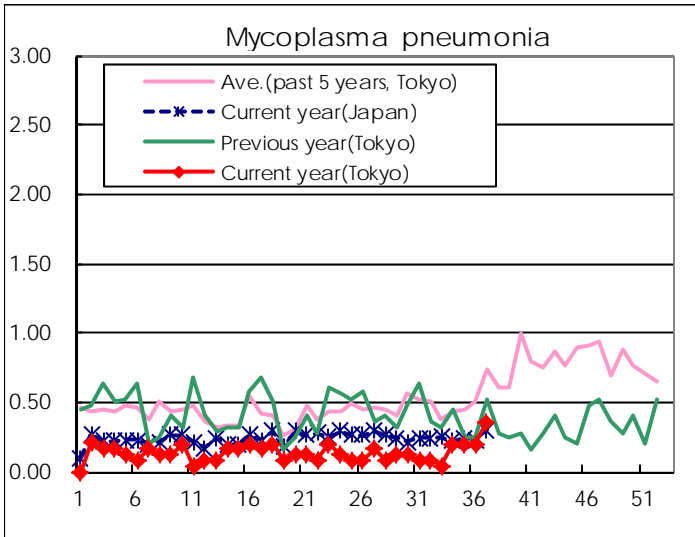
(Blank means 0.)

Disease Trend Graph (weekly reported cases per sentinel in comparison)









Number of sentinel facilities for weekly reporting		
Types of sentinels	Number of sentinels	Sentinels having reported
Pediatric	264	257
Influenza	419	404
Ophthalmic	39	37
Specially-designated	25	25

Tokyo Metropolitan Government
Infectious Disease Surveillance Center