
INFECTIOUS DISEASES WEEKLY REPORT

TOKYO iDWR

Tokyo Metropolitan Infectious Disease Surveillance Center

25 September 2014 / Number 38

Surveillance System in Tokyo, Japan

The infectious diseases which all physicians must report

All physicians must report to health centers the incidence of the diseases which are shown at page one. Health centers electronically report the individual cases to Tokyo Metropolitan Infectious Disease Surveillance Center.

The infectious diseases required to be reported by the sentinels

The numbers of patients who visit the sentinel clinics or hospitals during a week are reported to health centers in Tokyo. And they electronically report the numbers to Tokyo Metropolitan Infectious Disease Surveillance Center. We have about 500 sentinel clinics and hospitals in Tokyo.

1st Week is early January and 52nd Week is end of December.

Tokyo Metropolitan Institute of Public Health

TEL:81-3-3363-3213 FAX:81-3-5332-7365

e-mail:idsc@tokyo-eiken.go.jp

URL:idsc.tokyo-eiken.go.jp/

Number of patients with the diseases which all physicians must report

Category	Diseases	Tokyo					Japan	
		35th	36th	37th	38th	Cum 2014	38th	Cum 2014
I	Ebola hemorrhagic fever							
	Crimean-Congo hemorrhagic fever							
	Smallpox							
	South American hemorrhagic fever							
	Plague							
	Marburg disease							
	Lassa fever							
II	Acute poliomyelitis							
	Tuberculosis	85	88	74	34	2,896	250	18,587
	Diphtheria							
	Severe Acute Respiratory Syndrome(SARS)							
	Avian influenza H5N1							
※	Middle East Respiratory Syndrome (MERS)							
	Avian influenza H7N9							
III	Cholera					3		3
	Shigellosis		4		1	28	4	80
	Enterohemorrhagic Escherichia coli infection	13	27	11	5	302	49	3,324
	Typhoid fever		5	3	1	20	1	36
	Paratyphoid fever		1			7	1	14
IV	Hepatitis E			2		20		107
	West Nile fever							
	Hepatitis A	1				28		399
	Echinococcosis							14
	Yellow fever							
	Psittacosis					2		7
	Omsk hemorrhagic fever							
	Relapsing fever							1
	Kyasanur forest disease							
	Q fever							1
	Rabies							
	Coccidioidomycosis							1
	Monkeypox							
	Severe Fever with Thrombocytopenia Syndrome							55
	Hemorrhagic fever with renal syndrome							
	Western equine encephalitis							
	Tick-borne encephalitis							
	Anthrax							
	Chikungunya fever					2		9
	Scrub typhus(Tsutsugamushi disease)					5		115
	Dengue fever	19	35	28	17	133	22	276
	Eastern equine encephalitis							
	Avian influenza (excluding H5N1 and H7N9)							
	Nipah virus infection							
	Japanese spotted fever						8	152
	Japanese encephalitis							1
	Hantavirus pulmonary syndrome							
	Herpes B virus infection							
	Glanders							
	Brucellosis					4		10
	Venezuelan equine encephalitis							
	Hendra virus infection							
	Epidemic typhus							
Botulism							1	
Malaria	1	2	4		23		49	
Tularemia							1	
Lyme disease	1				1		9	
Lyssavirus infection(excluding rabies)								
Rift valley fever								
Melioidosis								
Legionellosis	2	2	1	4	76	23	882	
Leptospirosis			1		2	3	24	
Rocky mountain spotted fever								

Category	Diseases	Tokyo					Japan	
		35th	36th	37th	38th	Cum 2014	38th	Cum 2014
V	Amebiasis	7	6	6	2	164	11	810
	Viral hepatitis(excluding hepatitis A and E)		1			38	1	177
	CRE infection							
	Acute encephalitis(excluding JE and WNE)		2	1		37	4	349
	Cryptosporidiosis		1			75	1	83
	Creutzfeldt-Jakob disease	1				9	1	123
	Severe invasive streptococcal infections(TSLS)	1	1	1		38	5	200
	Acquired immunodeficiency syndrome (AIDS)	7	14	8	9	375	17	1,098
	Giardiasis	1		1		12		44
	Invasive <i>Haemophilus influenzae</i> disease		1	1	1	19	5	146
	Invasive meningococcal disease	1				6		26
	Invasive pneumococcal disease		1	2		158	7	1,269
	Varicella (limited to hospitalized case)							
	Congenital rubella syndrome					3		8
	Syphilis	11	9	9	3	363	4	1,186
	Disseminated cryptococcosis							
	Tetanus			1	1	10	2	96
	Vancomycin-resistant <i>S. aureus</i> infection							
	Vancomycin-resistant Enterococcus infection					3	1	37
	Rubella		5	1	1	86	3	285
Measles	2	1			87	2	447	
MDRA infection								

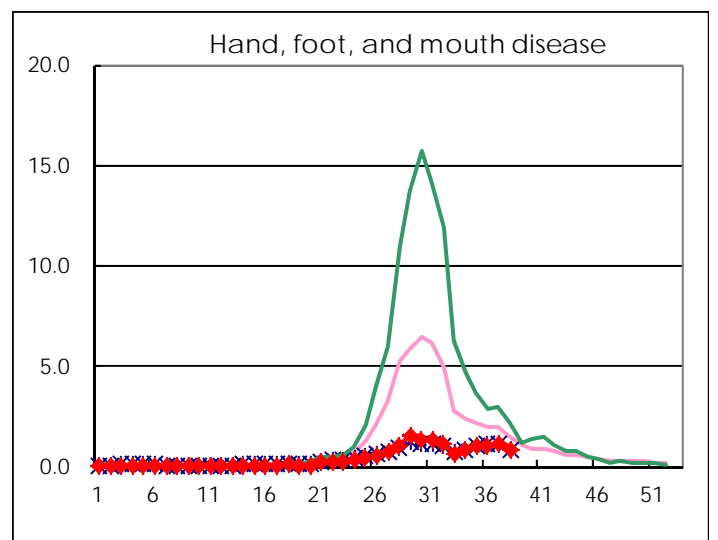
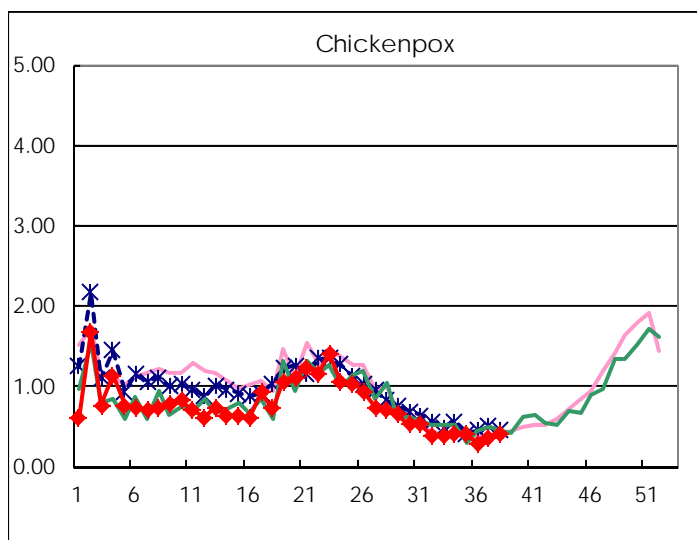
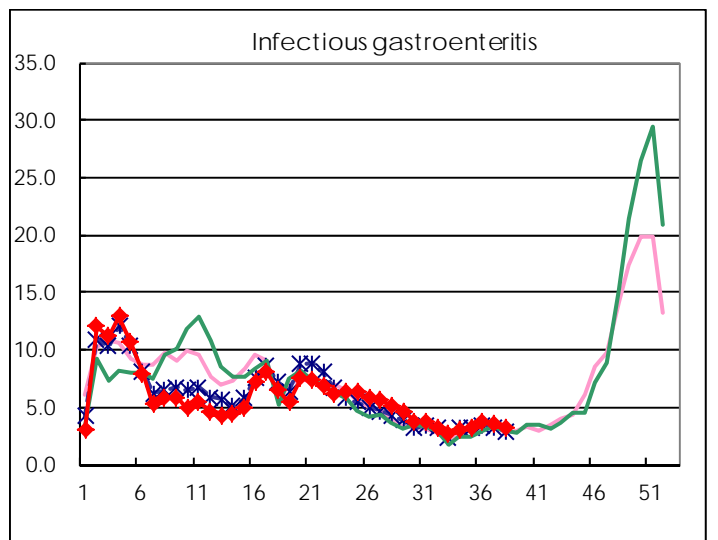
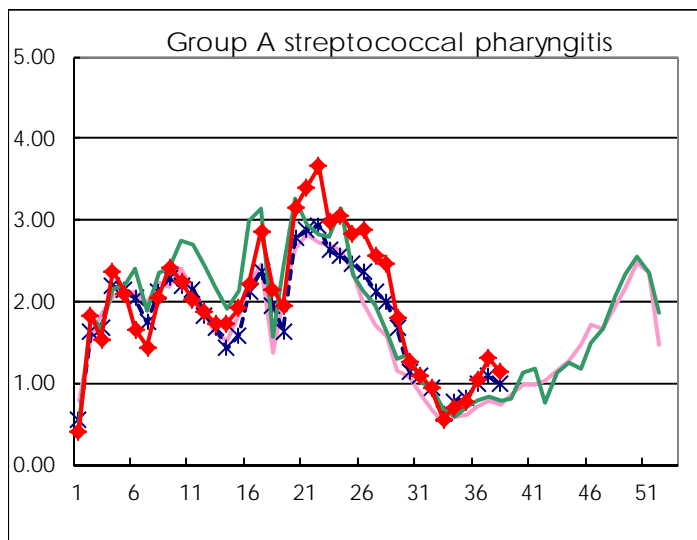
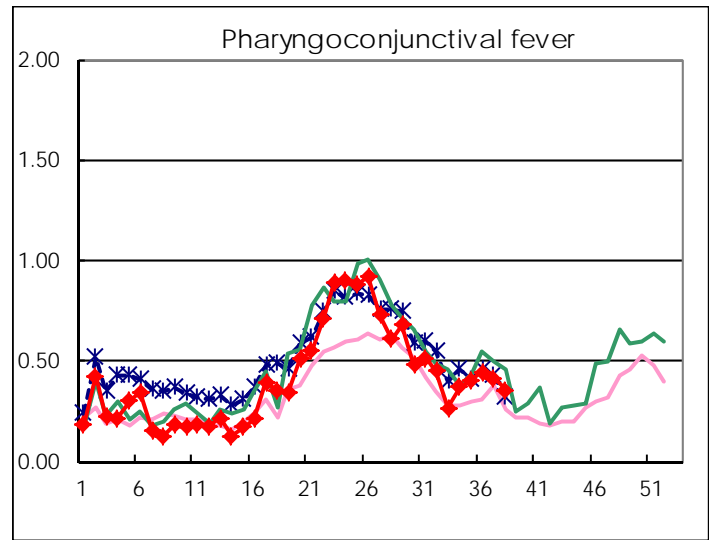
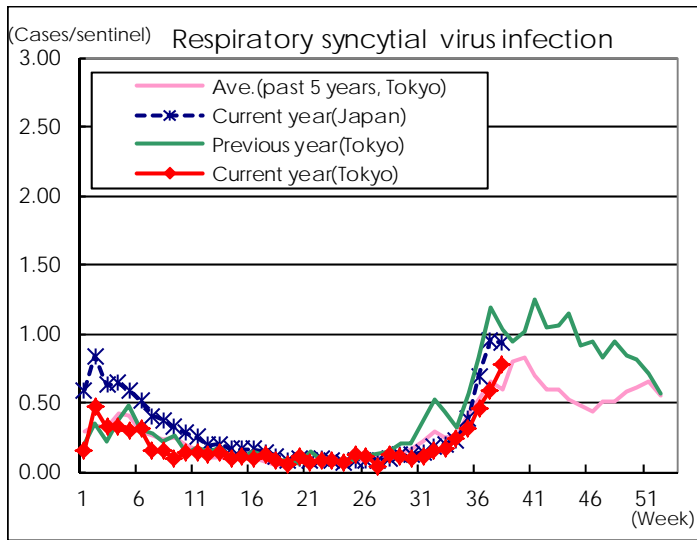
※ Designated infectious disease

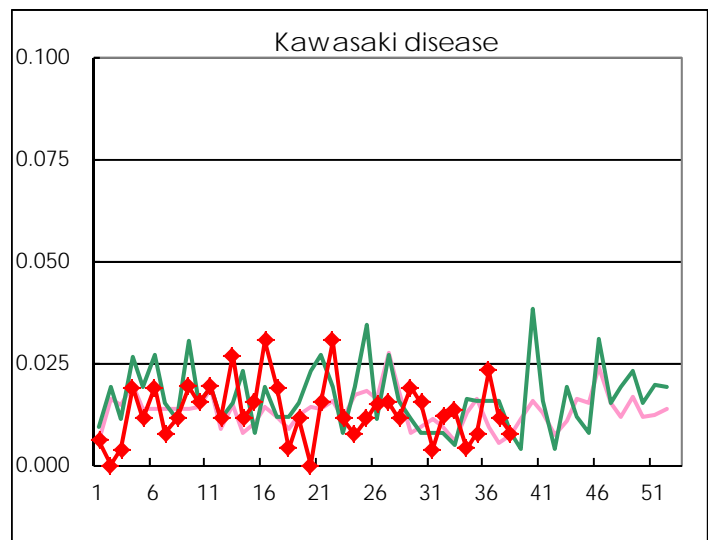
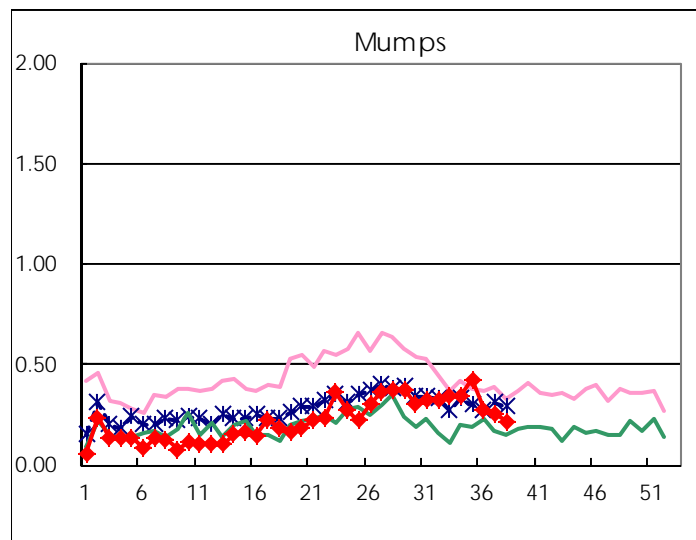
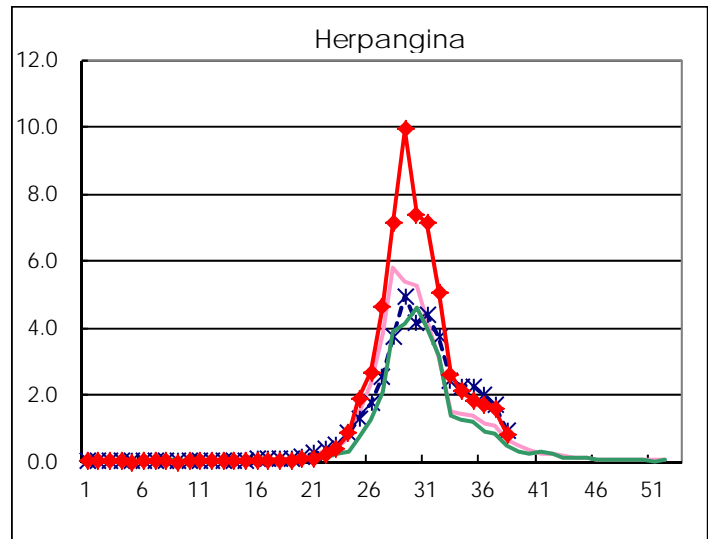
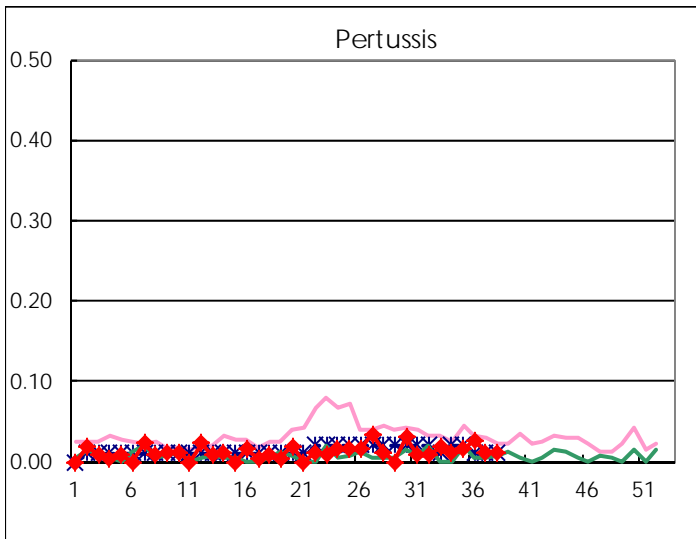
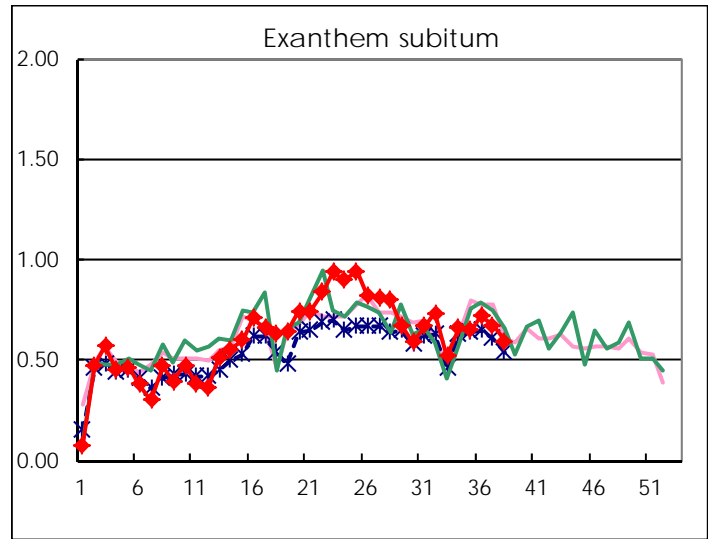
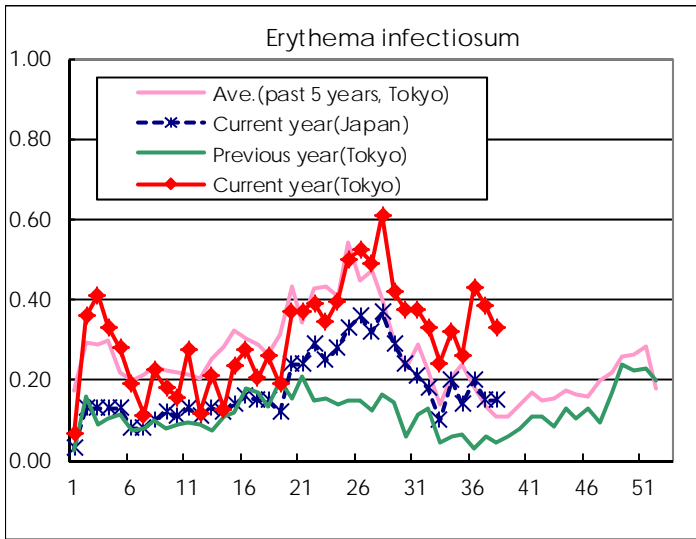
Number of patients with the diseases to be reported
by the designated clinics and hospitals

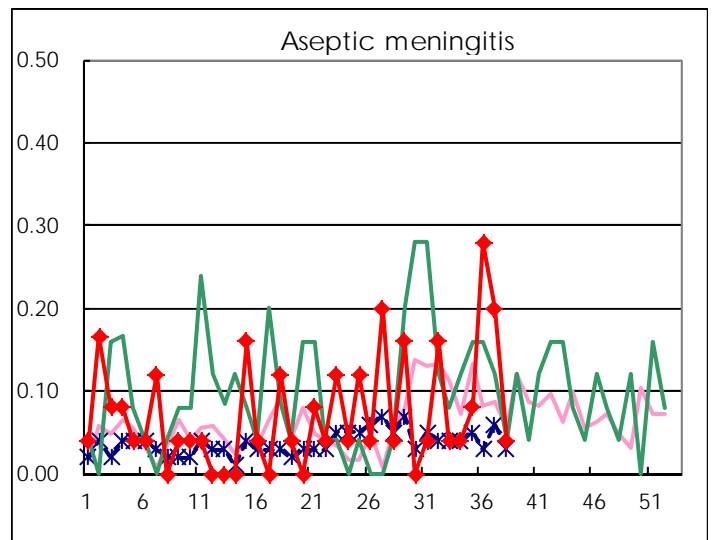
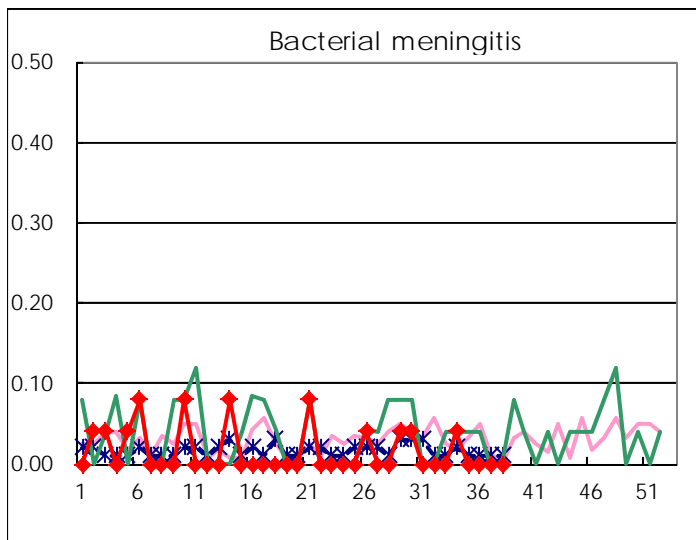
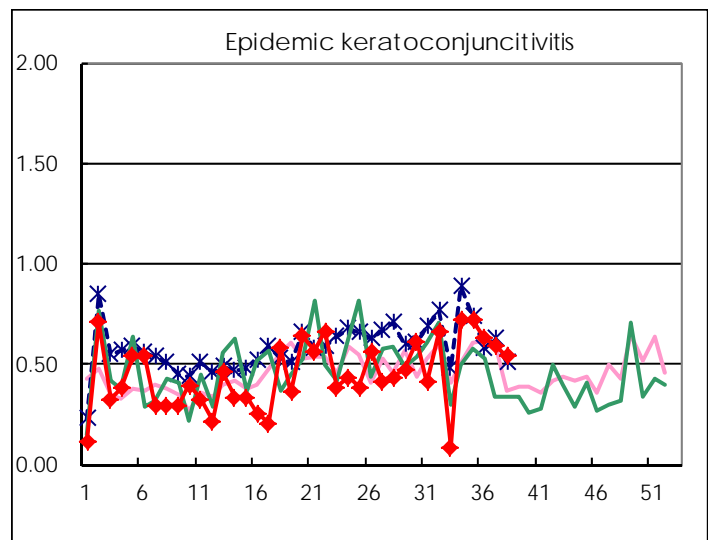
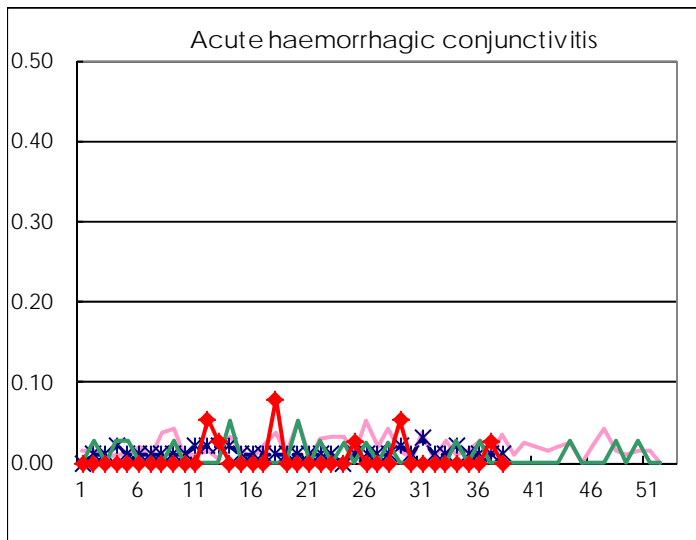
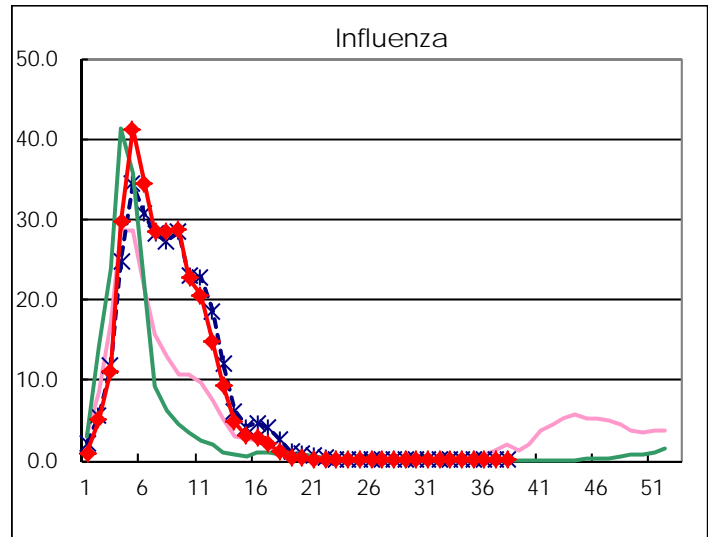
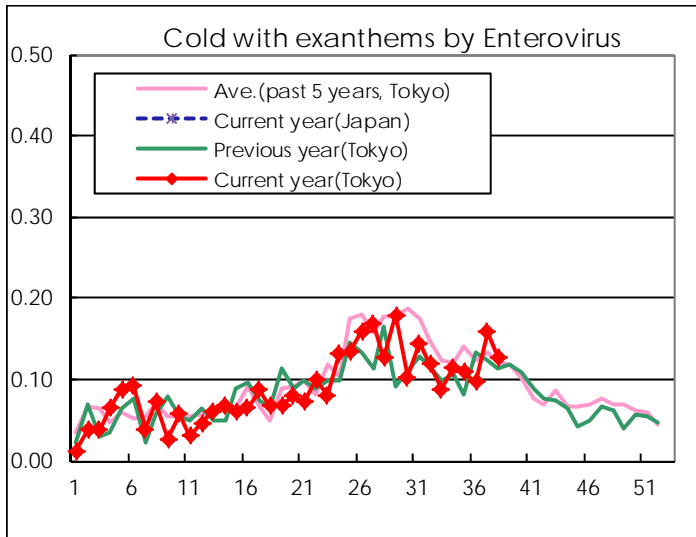
Diseases	Tokyo				
	35th	36th	37th	38th	/sentinel
Respiratory syncytial virus infection	79	120	154	199	0.77
Pharyngoconjunctival fever	105	116	108	92	0.36
Group A streptococcal pharyngitis	201	268	339	291	1.13
Infectious gastroenteritis	829	960	943	823	3.19
Chickenpox	103	77	97	106	0.41
Hand, foot, and mouth disease	263	261	307	226	0.88
Erythema infectiosum	67	112	100	85	0.33
Exanthem subitum	167	187	175	154	0.60
Pertussis	4	7	3	3	0.01
Herpangina	470	446	406	214	0.83
Mumps	110	72	66	56	0.22
Kawasaki disease	2	6	3	2	0.01
Cold with exantheams by Enterovirus	28	25	41	33	0.13
Influenza	6	6	16	51	0.13
Acute hemorrhagic conjunctivitis			1		
Epidemic keratoconjunctivitis	28	24	22	21	0.54
Bacterial meningitis					
Aseptic meningitis	2	7	5	1	0.04
Mycoplasma pneumonia	5	5	9	4	0.16
Chlamydial pneumonia (excluding psittacosis)			1		
Infectious gastroenteritis (only by Rotavirus)					
Influenza-Associated Hospitalizations					

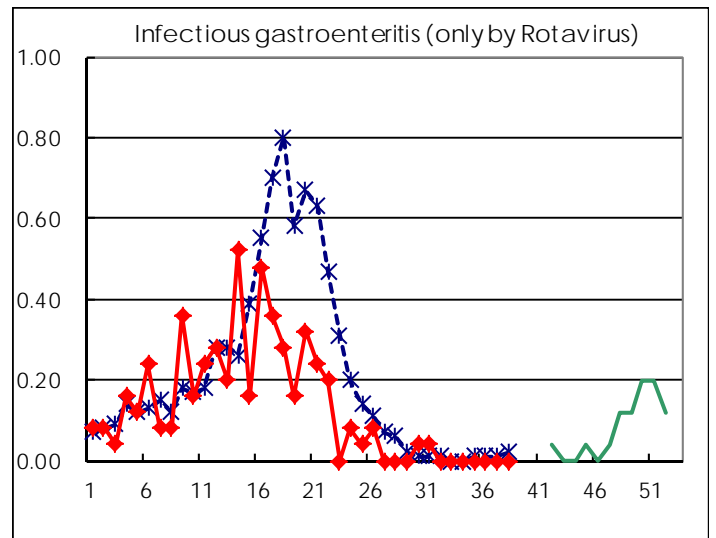
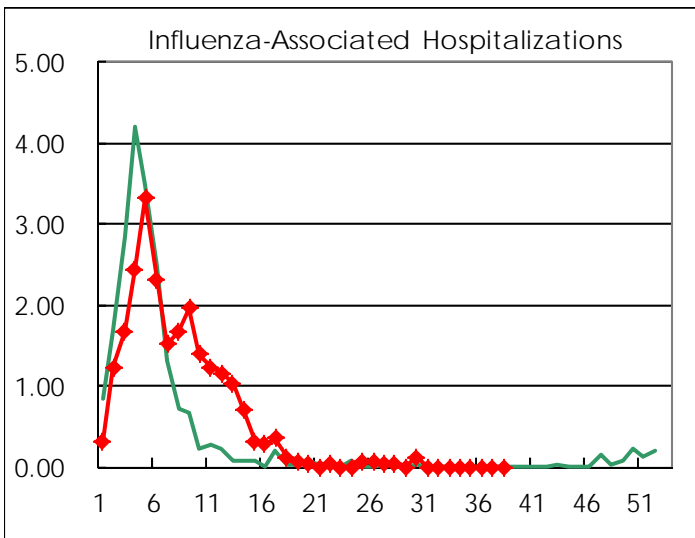
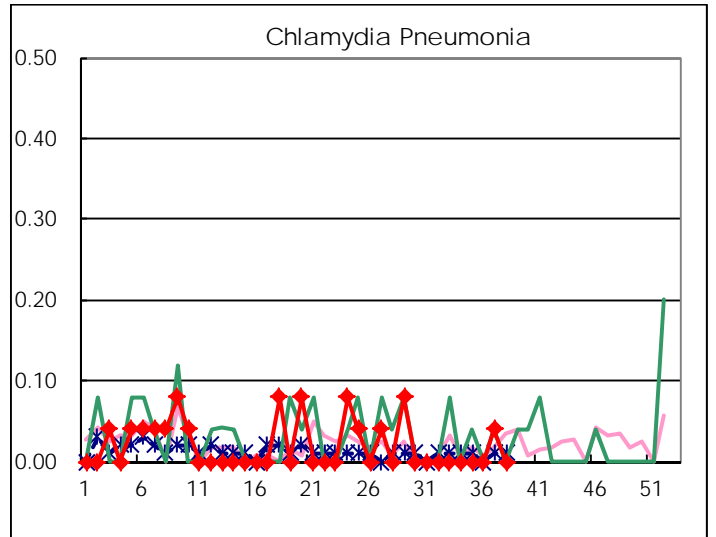
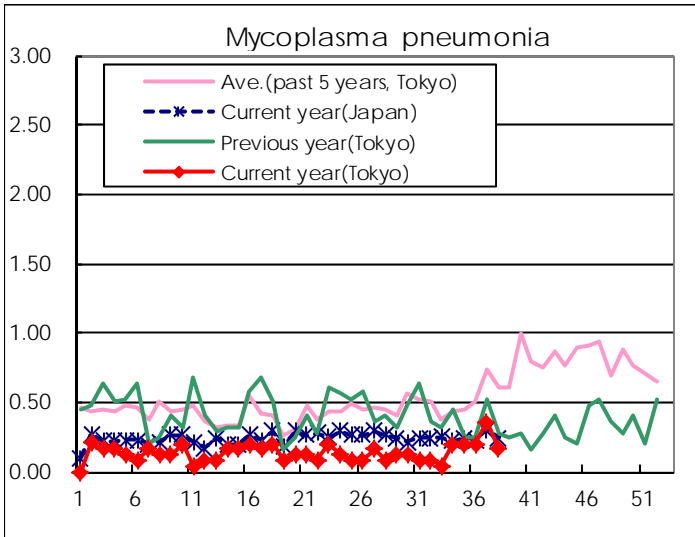
(Blank means 0.)

Disease Trend Graph (weekly reported cases per sentinel in comparison)









Number of sentinel facilities for weekly reporting		
Types of sentinels	Number of sentinels	Sentinels having reported
Pediatric	264	258
Influenza	419	407
Ophthalmic	39	39
Specially-designated	25	25

Tokyo Metropolitan Government
Infectious Disease Surveillance Center