
INFECTIOUS DISEASES WEEKLY REPORT

TOKYO iDWR

Tokyo Metropolitan Infectious Disease Surveillance Center

2 October 2014 / Number 39

Surveillance System in Tokyo, Japan

The infectious diseases which all physicians must report

All physicians must report to health centers the incidence of the diseases which are shown at page one. Health centers electronically report the individual cases to Tokyo Metropolitan Infectious Disease Surveillance Center.

The infectious diseases required to be reported by the sentinels

The numbers of patients who visit the sentinel clinics or hospitals during a week are reported to health centers in Tokyo. And they electronically report the numbers to Tokyo Metropolitan Infectious Disease Surveillance Center. We have about 500 sentinel clinics and hospitals in Tokyo.

1st Week is early January and 52nd Week is end of December.

Tokyo Metropolitan Institute of Public Health

TEL:81-3-3363-3213 FAX:81-3-5332-7365

e-mail:idsc@tokyo-eiken.go.jp

URL:idsc.tokyo-eiken.go.jp/

Number of patients with the diseases which all physicians must report

Category	Diseases	Tokyo				Japan		
		36th	37th	38th	39th	Cum 2014	39th	Cum 2014
I	Ebola hemorrhagic fever							
	Crimean-Congo hemorrhagic fever							
	Smallpox							
	South American hemorrhagic fever							
	Plague							
	Marburg disease							
	Lassa fever							
II	Acute poliomyelitis							
	Tuberculosis	88	82	54	59	2,989	339	19,122
	Diphtheria							
	Severe Acute Respiratory Syndrome(SARS)							
	Avian influenza H5N1							
※	Middle East Respiratory Syndrome (MERS)							
	Avian influenza H7N9							
III	Cholera					3		3
	Shigellosis	4		1		28	3	84
	Enterohemorrhagic Escherichia coli infection	27	11	5	13	315	67	3,408
	Typhoid fever	5	3	1	2	22	4	40
	Paratyphoid fever	1				7		14
IV	Hepatitis E		2		1	21	1	108
	West Nile fever							
	Hepatitis A					28		400
	Echinococcosis						1	15
	Yellow fever							
	Psittacosis				1	3	1	8
	Omsk hemorrhagic fever							
	Relapsing fever							1
	Kyasanur forest disease							
	Q fever							1
	Rabies							
	Coccidioidomycosis							1
	Monkeypox							
	Severe Fever with Thrombocytopenia Syndrome						1	56
	Hemorrhagic fever with renal syndrome							
	Western equine encephalitis							
	Tick-borne encephalitis							
	Anthrax							
	Chikungunya fever					2	1	10
	Scrub typhus(Tsutsugamushi disease)					5		115
	Dengue fever	35	30	17	10	145	11	292
	Eastern equine encephalitis							
	Avian influenza (excluding H5N1 and H7N9)							
	Nipah virus infection							
	Japanese spotted fever						7	160
	Japanese encephalitis						1	2
	Hantavirus pulmonary syndrome							
	Herpes B virus infection							
	Glanders							
	Brucellosis					4		10
	Venezuelan equine encephalitis							
	Hendra virus infection							
	Epidemic typhus							
Botulism							1	
Malaria	2	4		1	24	2	51	
Tularemia							1	
Lyme disease					1		10	
Lyssavirus infection(excluding rabies)								
Rift valley fever								
Melioidosis								
Legionellosis	2	1	4	5	81	23	914	
Leptospirosis		1			2		24	
Rocky mountain spotted fever								

Category	Diseases	Tokyo					Japan	
		36th	37th	38th	39th	Cum 2014	39th	Cum 2014
V	Amebiasis	6	6	2	4	168	9	827
	Viral hepatitis(excluding hepatitis A and E)	1			1	39	2	180
	CRE infection						8	12
	Acute encephalitis(excluding JE and WNE)	2	1		1	38	1	358
	Cryptosporidiosis	1				75	1	85
	Creutzfeldt-Jakob disease				1	10	4	127
	Severe invasive streptococcal infections(TSLS)	1	1			38	4	205
	Acquired immunodeficiency syndrome (AIDS)	14	8	9	12	387	21	1,126
	Giardiasis		1		1	13	2	46
	Invasive <i>Haemophilus influenzae</i> disease	1	1	1		19	2	149
	Invasive meningococcal disease					6		26
	Invasive pneumococcal disease	1	2	1	2	161	11	1,290
	Varicella (limited to hospitalized case)				2	2	6	8
	Congenital rubella syndrome					3		8
	Syphilis	9	9	3	9	372	15	1,213
	Disseminated cryptococcosis						2	2
	Tetanus		1	1		10	1	101
	Vancomycin-resistant <i>S. aureus</i> infection							
	Vancomycin-resistant Enterococcus infection					3	1	38
	Rubella	5	1	1	1	87		285
Measles	1				87		445	
MDRA infection				1	1	1	1	

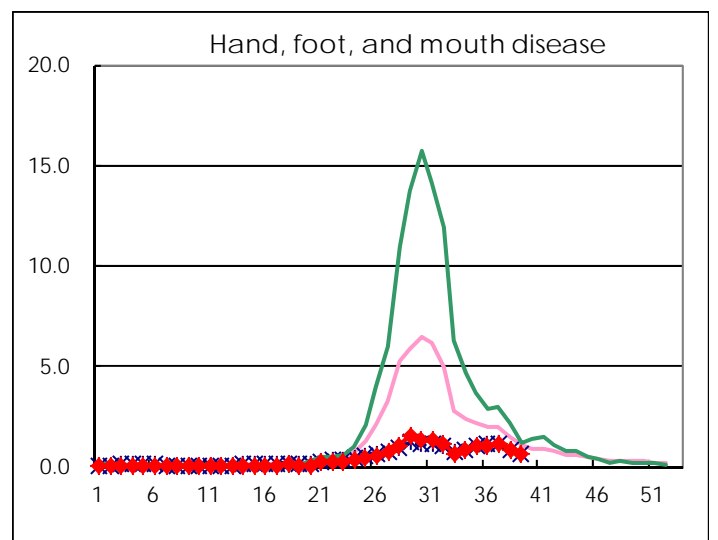
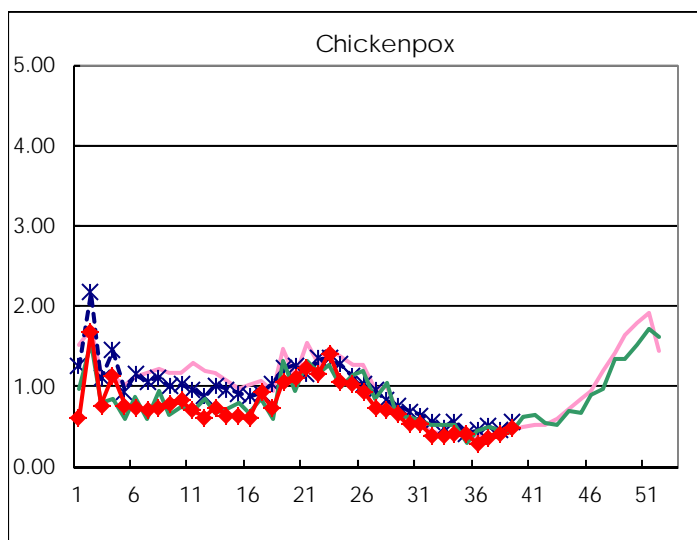
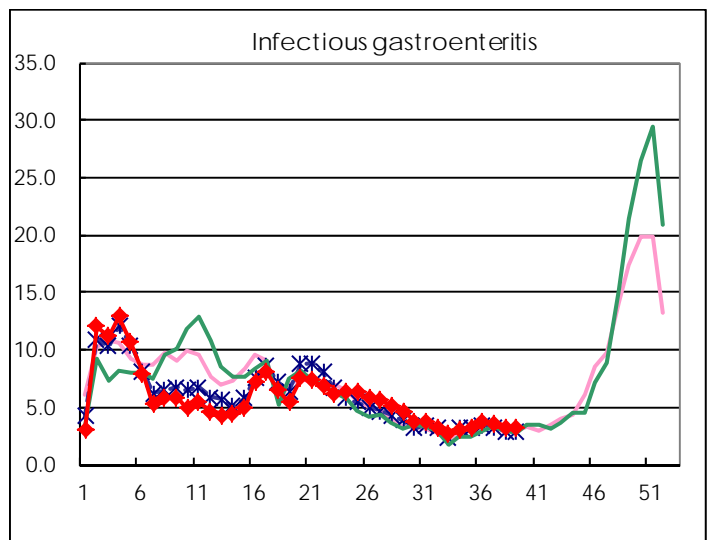
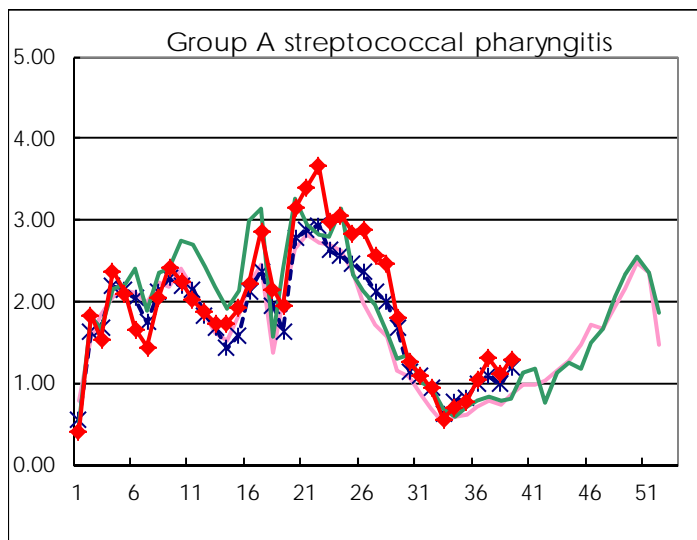
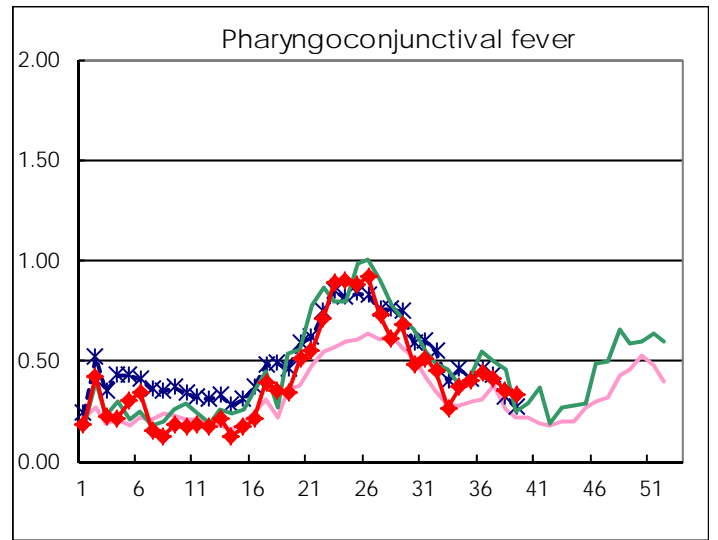
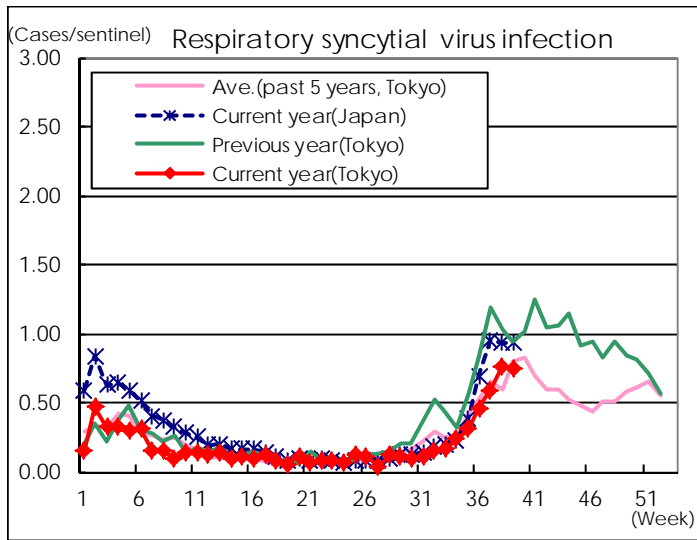
※ Designated infectious disease

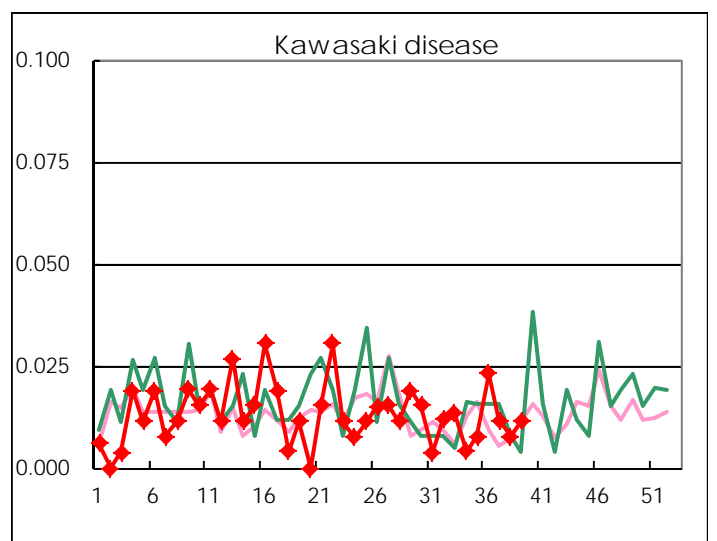
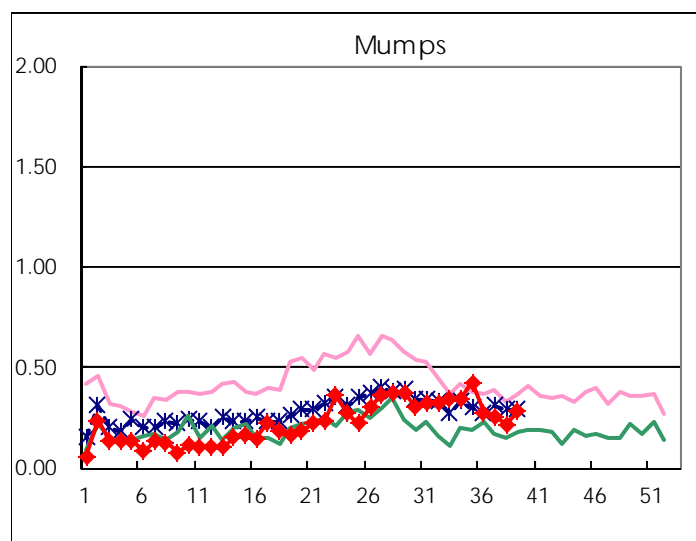
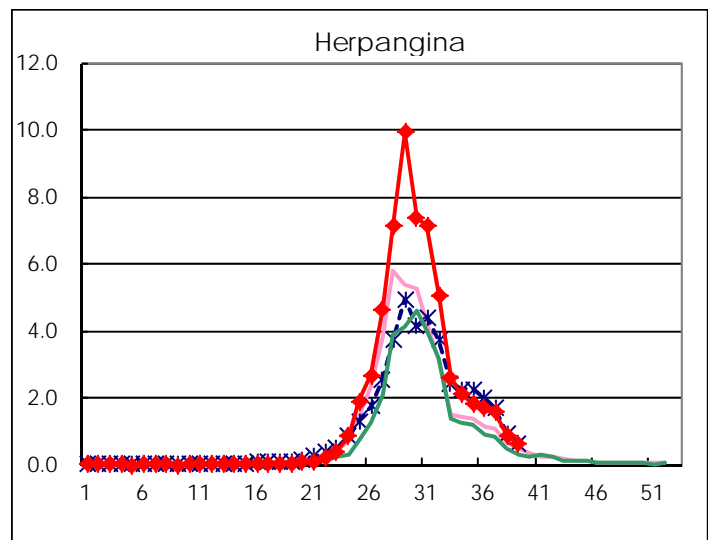
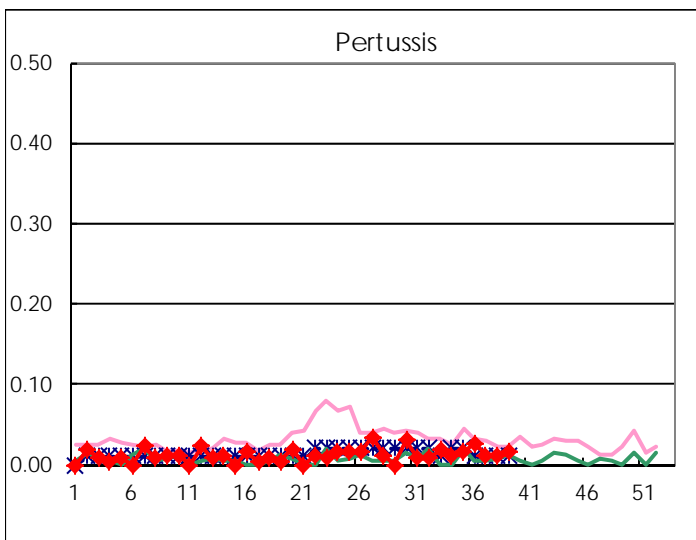
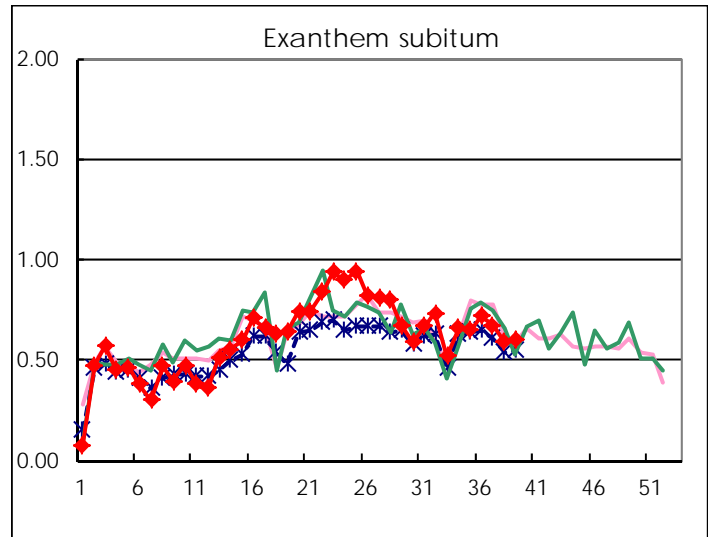
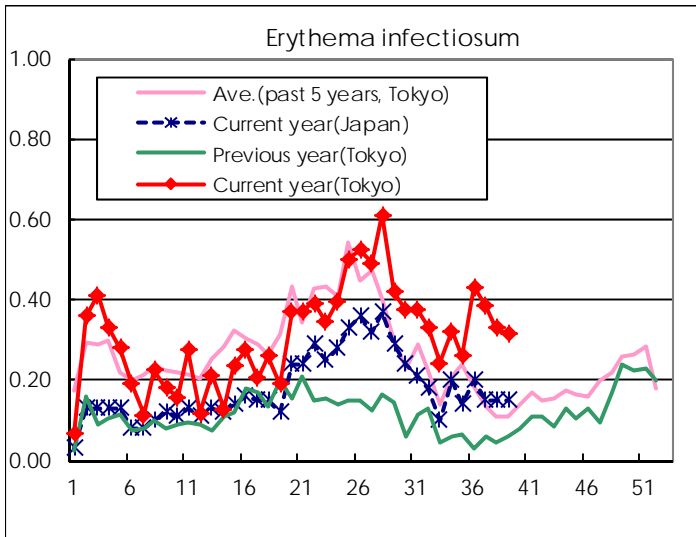
Number of patients with the diseases to be reported
by the designated clinics and hospitals

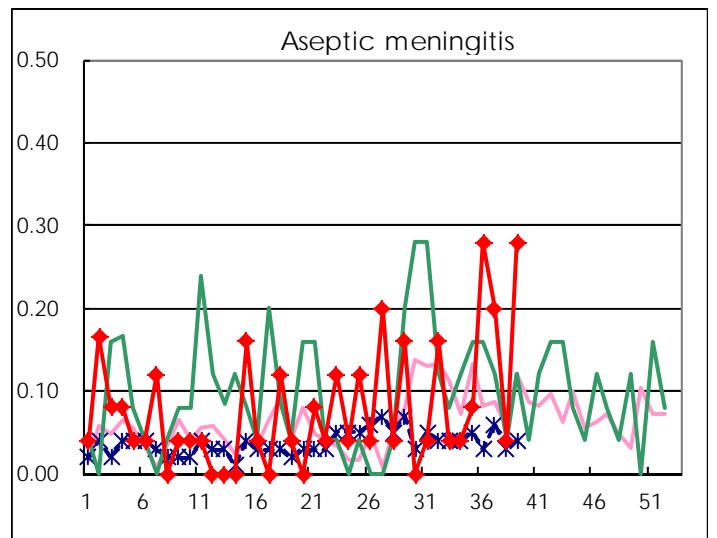
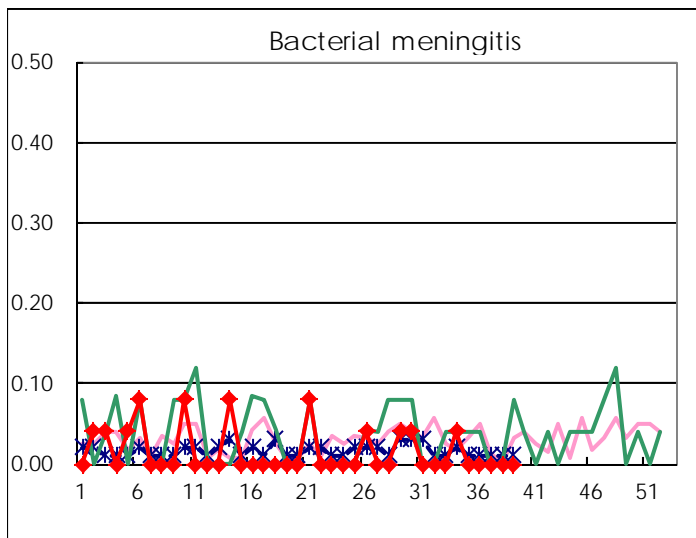
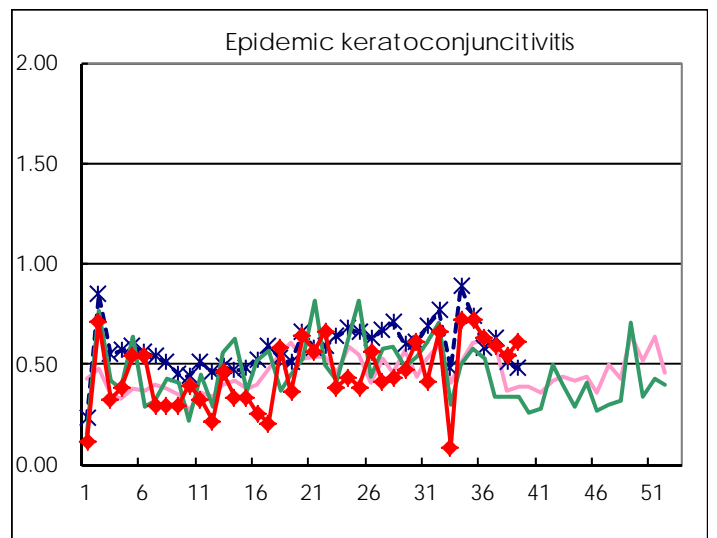
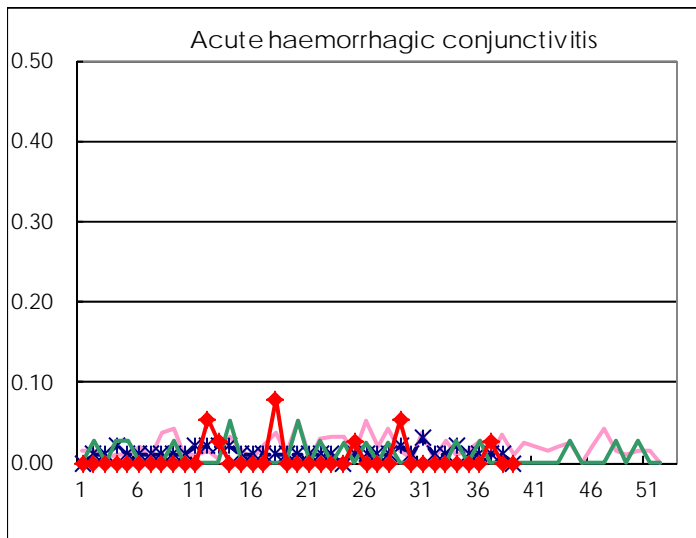
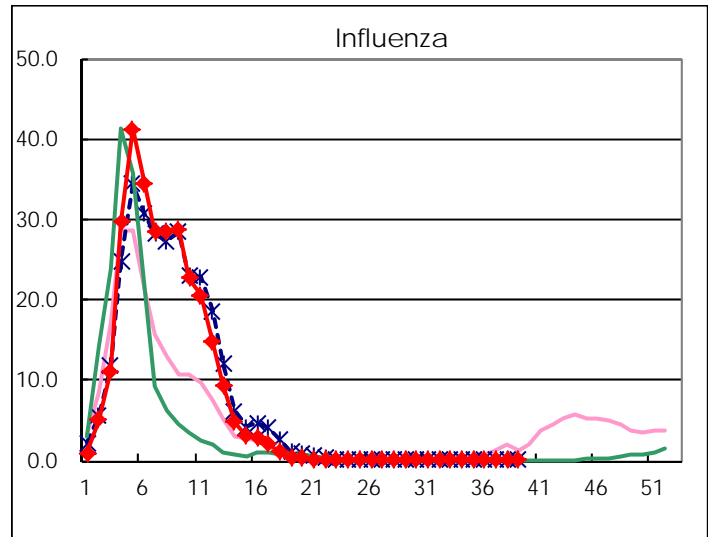
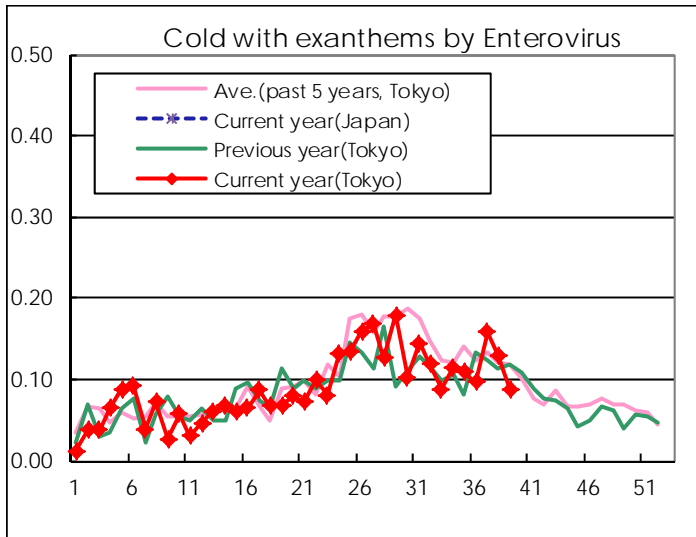
Diseases	Tokyo				
	36th	37th	38th	39th	/sentinel
Respiratory syncytial virus infection	120	154	199	194	0.74
Pharyngoconjunctival fever	116	108	92	88	0.34
Group A streptococcal pharyngitis	268	339	291	338	1.30
Infectious gastroenteritis	960	943	845	840	3.22
Chickenpox	77	97	106	128	0.49
Hand, foot, and mouth disease	261	307	229	160	0.61
Erythema infectiosum	112	100	86	82	0.31
Exanthem subitum	187	175	154	157	0.60
Pertussis	7	3	3	4	0.02
Herpangina	446	406	226	158	0.61
Mumps	72	66	56	73	0.28
Kawasaki disease	6	3	2	3	0.01
Cold with exanthems by Enterovirus	25	41	34	23	0.09
Influenza	6	16	51	37	0.09
Acute hemorrhagic conjunctivitis		1			
Epidemic keratoconjunctivitis	24	22	21	24	0.62
Bacterial meningitis					
Aseptic meningitis	7	5	1	7	0.28
Mycoplasma pneumonia	5	9	4	9	0.36
Chlamydial pneumonia (excluding psittacosis)		1			
Infectious gastroenteritis (only by Rotavirus)					
Influenza-Associated Hospitalizations					

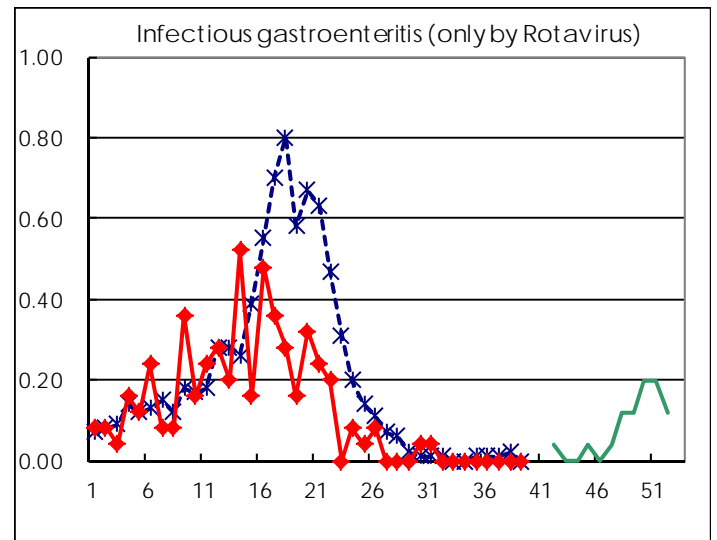
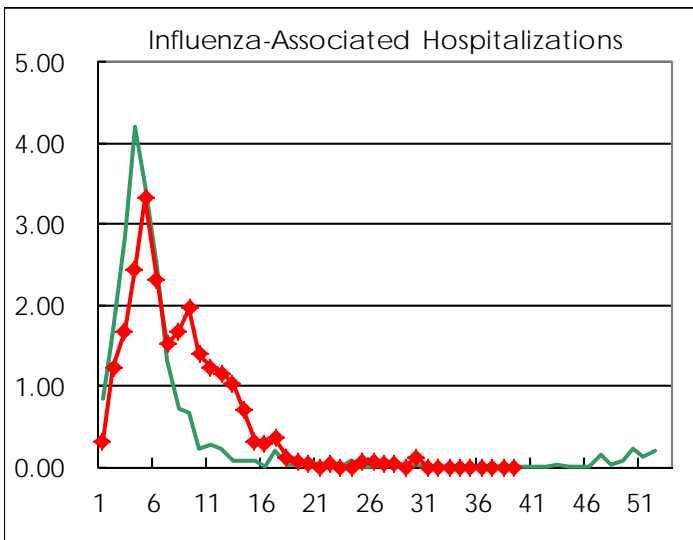
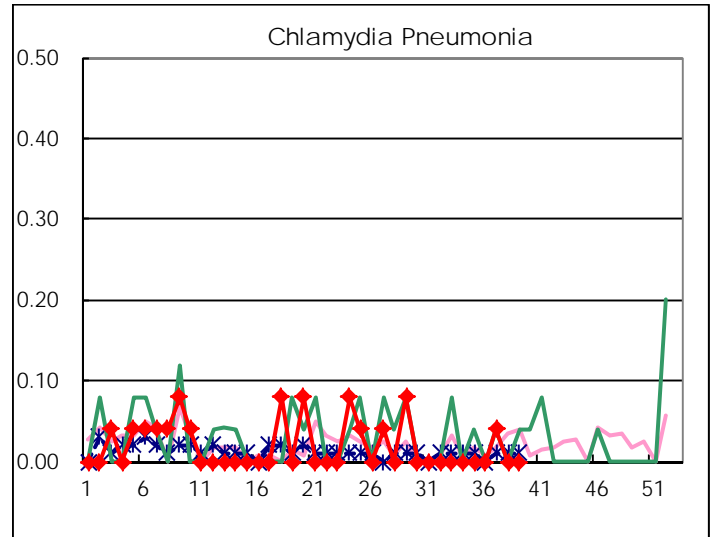
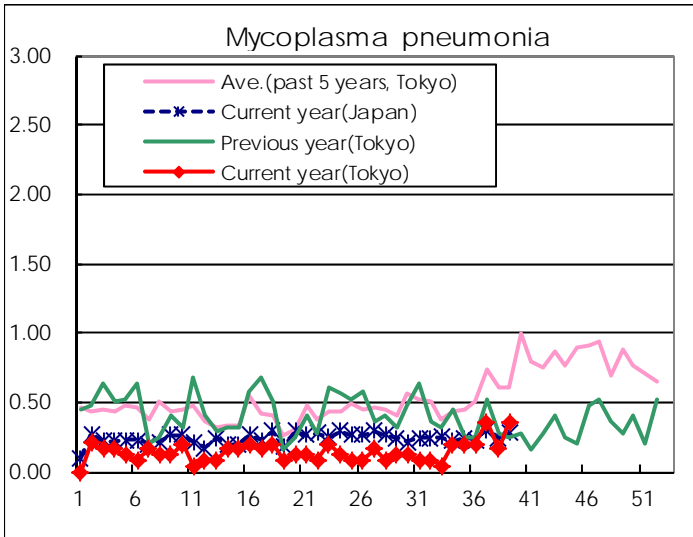
(Blank means 0.)

Disease Trend Graph (weekly reported cases per sentinel in comparison)









Number of sentinel facilities for weekly reporting		
Types of sentinels	Number of sentinels	Sentinels having reported
Pediatric	264	261
Influenza	419	406
Ophthalmic	39	39
Specially-designated	25	25

Tokyo Metropolitan Government
Infectious Disease Surveillance Center