
INFECTIOUS DISEASES WEEKLY REPORT

TOKYO iDWR

Tokyo Metropolitan Infectious Disease Surveillance Center

9 October 2014 / Number 40

Surveillance System in Tokyo, Japan

The infectious diseases which all physicians must report

All physicians must report to health centers the incidence of the diseases which are shown at page one. Health centers electronically report the individual cases to Tokyo Metropolitan Infectious Disease Surveillance Center.

The infectious diseases required to be reported by the sentinels

The numbers of patients who visit the sentinel clinics or hospitals during a week are reported to health centers in Tokyo. And they electronically report the numbers to Tokyo Metropolitan Infectious Disease Surveillance Center. We have about 500 sentinel clinics and hospitals in Tokyo.

1st Week is early January and 52nd Week is end of December.

Tokyo Metropolitan Institute of Public Health

TEL:81-3-3363-3213 FAX:81-3-5332-7365

e-mail:idsc@tokyo-eiken.go.jp

URL:idsc.tokyo-eiken.go.jp/

Number of patients with the diseases which all physicians must report

Category	Diseases	Tokyo				Japan		
		37th	38th	39th	40th	Cum 2014	40th	Cum 2014
I	Ebola hemorrhagic fever							
	Crimean-Congo hemorrhagic fever							
	Smallpox							
	South American hemorrhagic fever							
	Plague							
	Marburg disease							
	Lassa fever							
II	Acute poliomyelitis							
	Tuberculosis	82	55	63	73	3,067	378	19,623
	Diphtheria							
	Severe Acute Respiratory Syndrome(SARS)							
	Avian influenza H5N1							
※	Middle East Respiratory Syndrome (MERS)							
	Avian influenza H7N9							
III	Cholera					3	1	4
	Shigellosis		1		2	30	7	91
	Enterohemorrhagic Escherichia coli infection	11	5	13	5	320	79	3,501
	Typhoid fever	3	1	2	2	24	2	42
	Paratyphoid fever					7	1	15
IV	Hepatitis E	2		1		21	1	110
	West Nile fever							
	Hepatitis A	1		1	1	31	2	404
	Echinococcosis							15
	Yellow fever							
	Psittacosis			1		3		8
	Omsk hemorrhagic fever							
	Relapsing fever							1
	Kyasanur forest disease							
	Q fever							1
	Rabies							
	Coccidioidomycosis							1
	Monkeypox							
	Severe Fever with Thrombocytopenia Syndrome							56
	Hemorrhagic fever with renal syndrome							
	Western equine encephalitis							
	Tick-borne encephalitis							
	Anthrax							
	Chikungunya fever					2		10
	Scrub typhus(Tsutsugamushi disease)				1	6	1	116
	Dengue fever	31	17	10	7	153	9	306
	Eastern equine encephalitis							
	Avian influenza (excluding H5N1 and H7N9)							
	Nipah virus infection							
	Japanese spotted fever						11	175
	Japanese encephalitis							2
	Hantavirus pulmonary syndrome							
	Herpes B virus infection							
	Glanders							
	Brucellosis					4		10
	Venezuelan equine encephalitis							
	Hendra virus infection							
	Epidemic typhus							
	Botulism							1
	Malaria	4		1		24		51
	Tularemia							1
	Lyme disease					1		10
Lyssavirus infection(excluding rabies)								
Rift valley fever								
Melioidosis								
Legionellosis	1	4	5	2	83	17	938	
Leptospirosis	1				2	1	25	
Rocky mountain spotted fever								

Category	Diseases	Tokyo					Japan	
		37th	38th	39th	40th	Cum 2014	40th	Cum 2014
V	Amebiasis	6	2	4	2	170	20	853
	Viral hepatitis(excluding hepatitis A and E)			1		39	5	187
	CRE infection				8	8	19	42
	Acute encephalitis(excluding JE and WNE)	1		1		38	3	360
	Cryptosporidiosis				6	81		85
	Creutzfeldt-Jakob disease			1		10	1	130
	Severe invasive streptococcal infections(TSLS)	1			1	39	2	210
	Acquired immunodeficiency syndrome (AIDS)	8	9	12	10	397	18	1,165
	Giardiasis	1		1		13		46
	Invasive <i>Haemophilus influenzae</i> disease	1	1			19	2	153
	Invasive meningococcal disease				1	6	1	27
	Invasive pneumococcal disease	2	1	2	5	166	20	1,315
	Varicella (limited to hospitalized case)			2	2	4	4	21
	Congenital rubella syndrome					3	1	9
	Syphilis	9	3	9	7	379	20	1,243
	Disseminated cryptococcosis				1	1		2
	Tetanus	1	1			10		102
	Vancomycin-resistant <i>S. aureus</i> infection							
	Vancomycin-resistant Enterococcus infection					3		38
	Rubella	1	1	1		87	4	290
Measles					87	5	451	
MDRA infection			1		1		2	

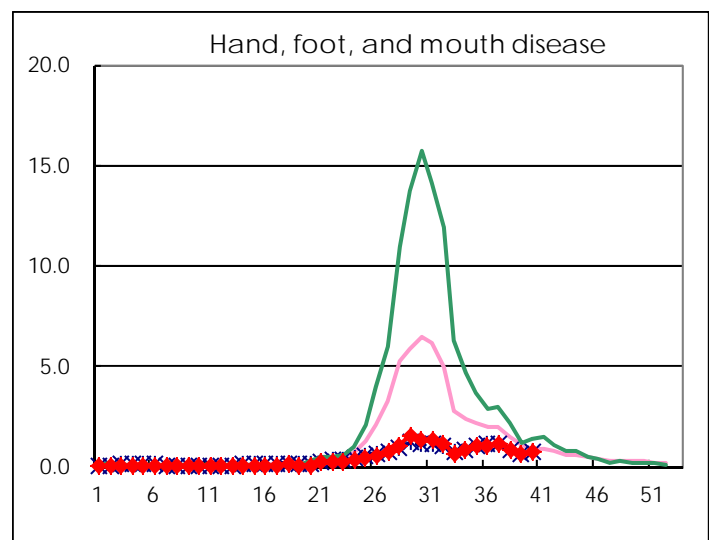
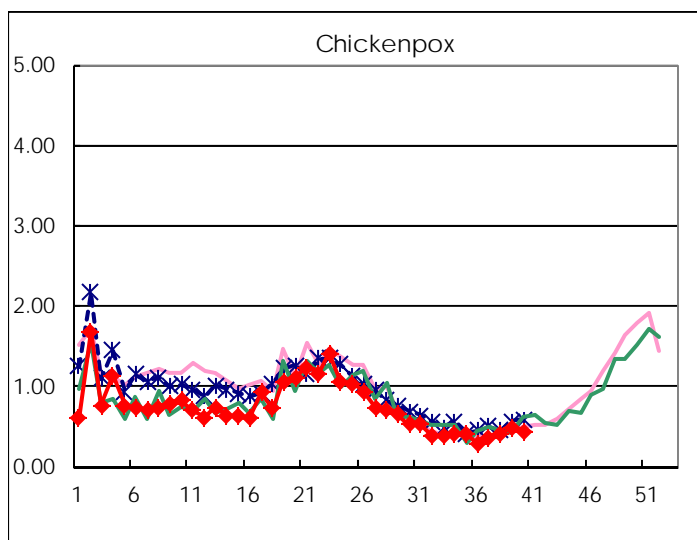
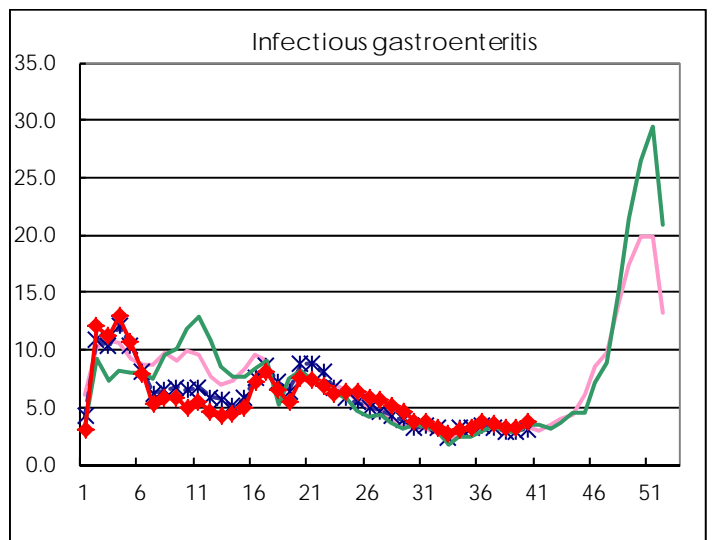
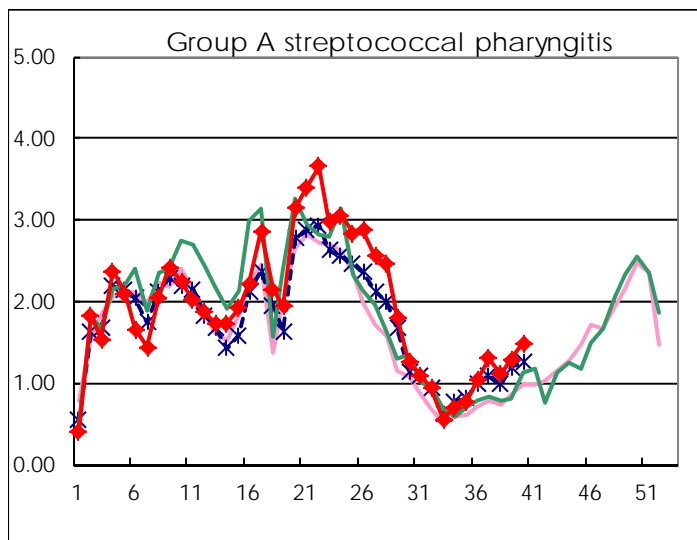
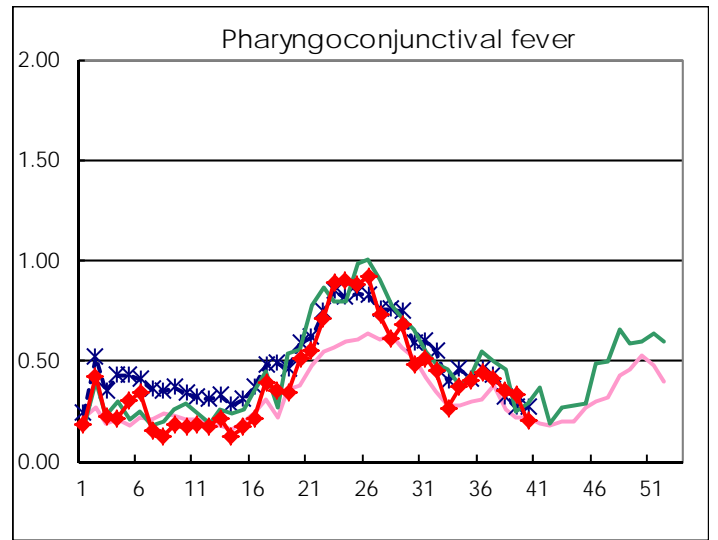
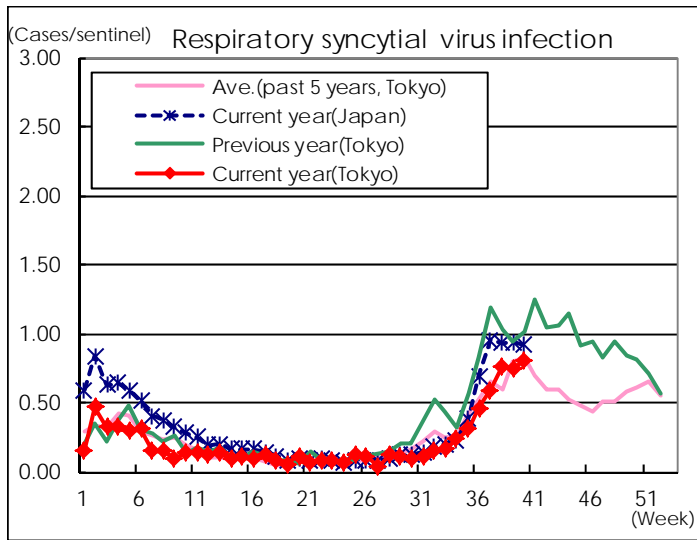
※ Designated infectious disease

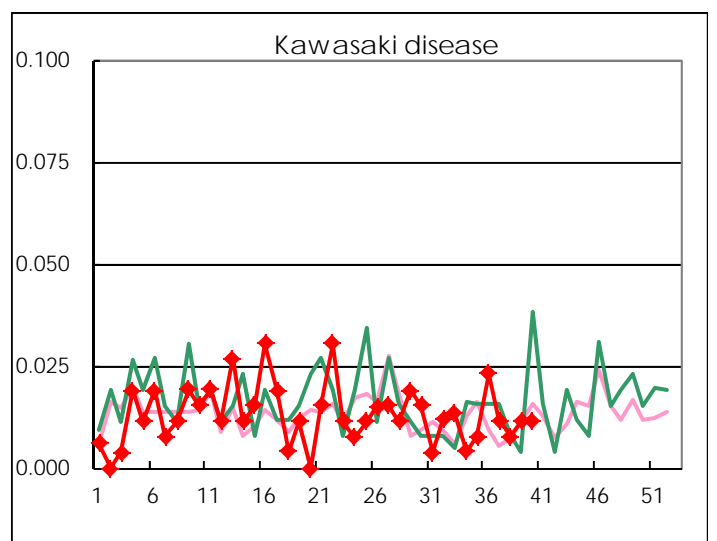
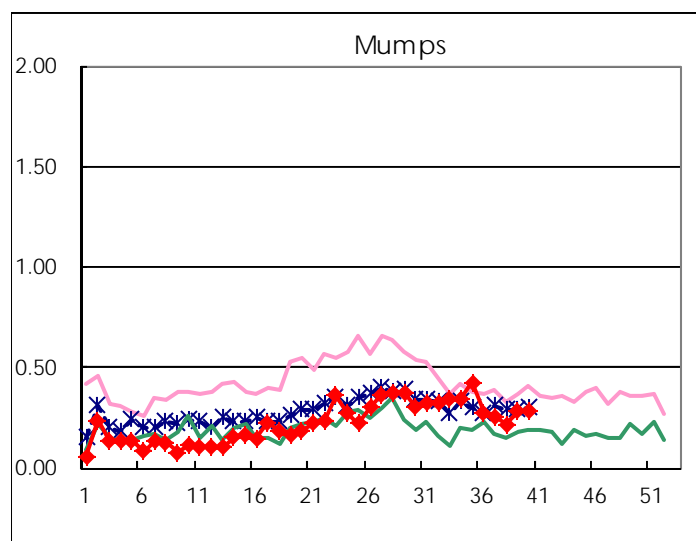
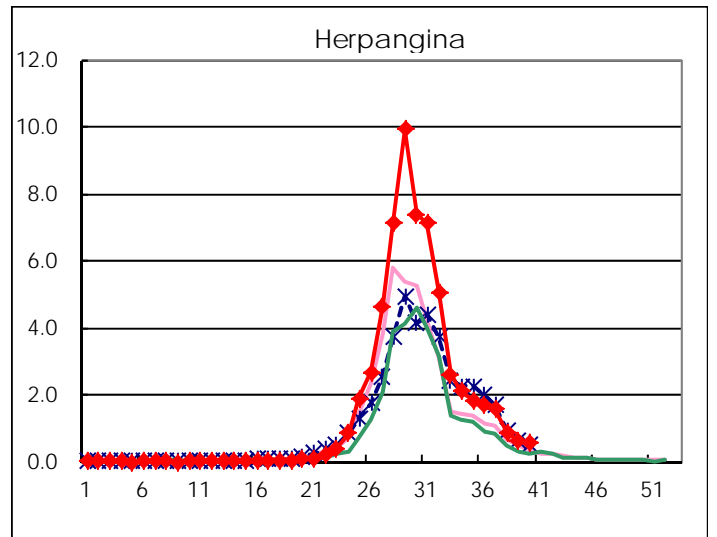
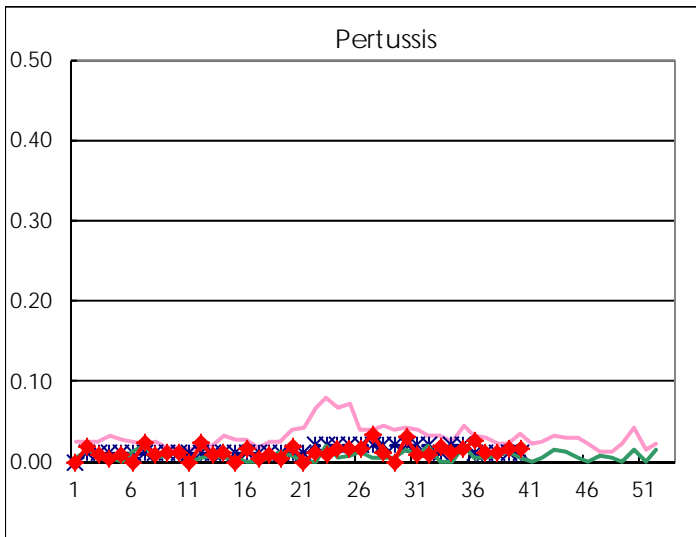
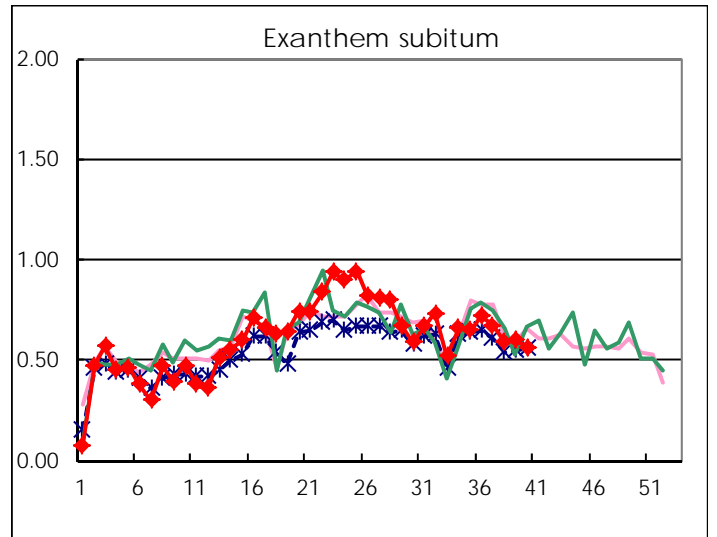
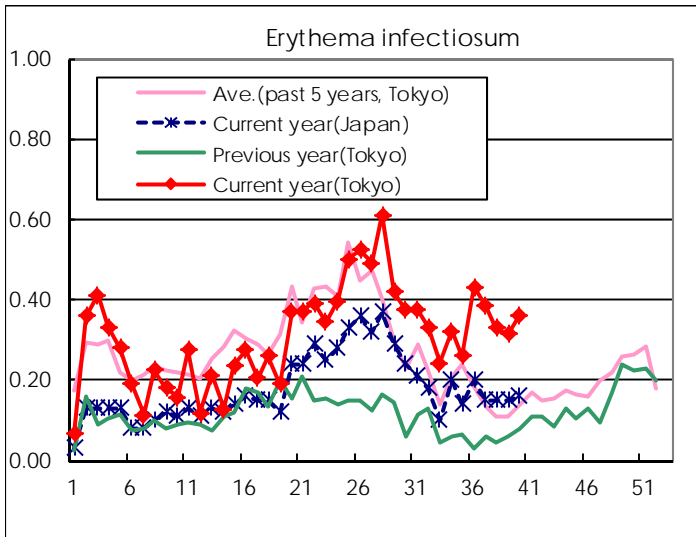
Number of patients with the diseases to be reported
by the designated clinics and hospitals

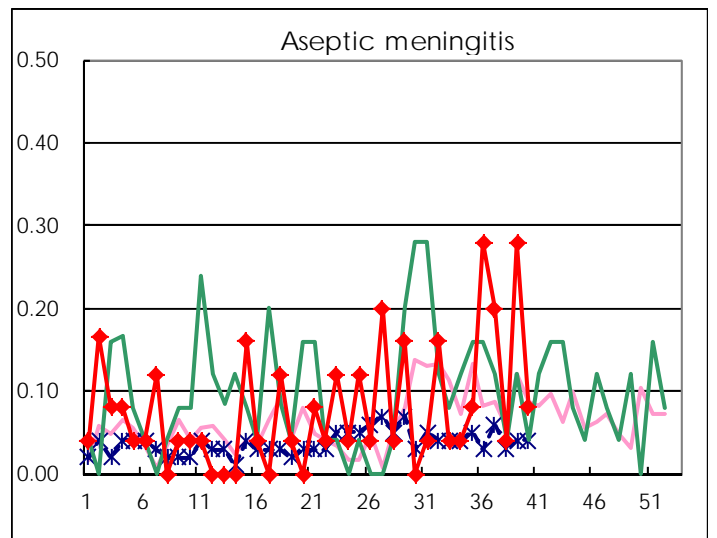
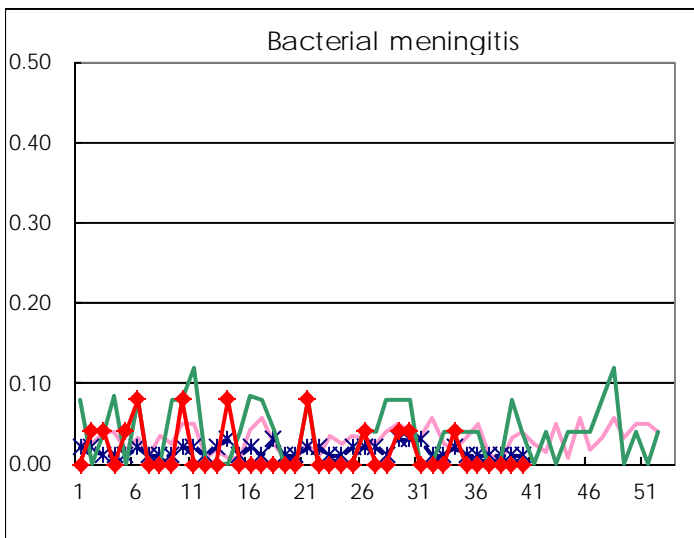
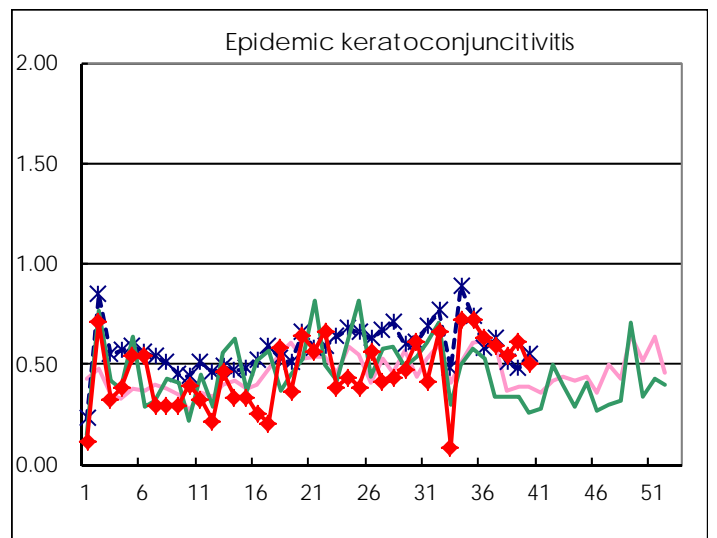
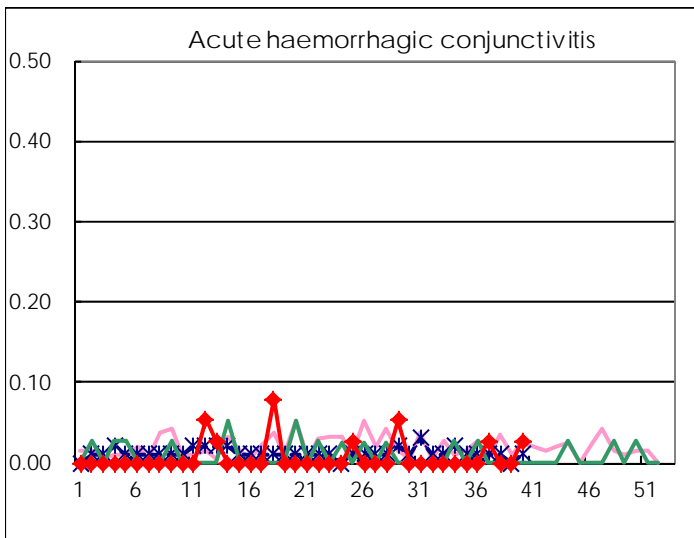
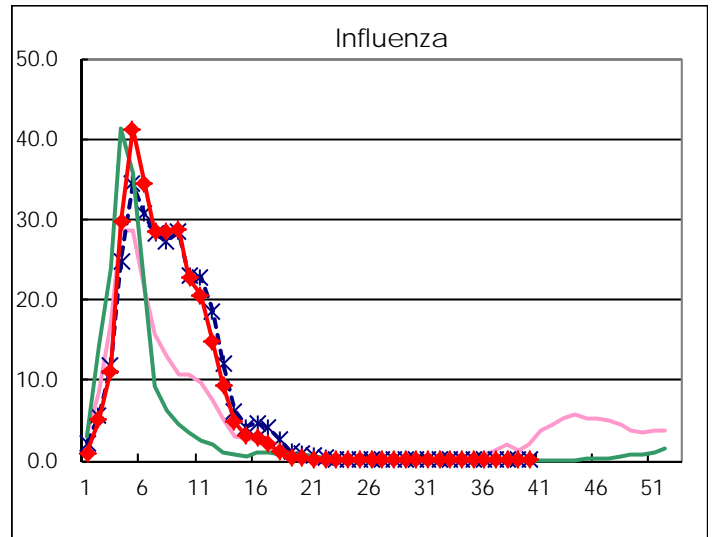
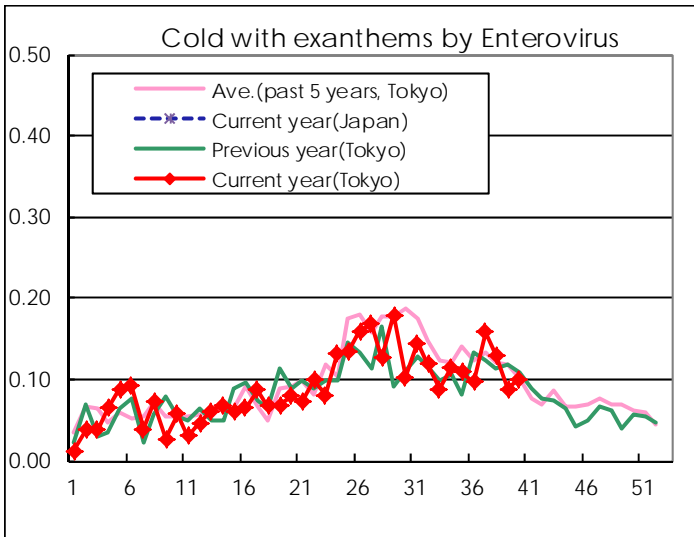
Diseases	Tokyo				
	37th	38th	39th	40th	/sentinel
Respiratory syncytial virus infection	154	199	194	210	0.81
Pharyngoconjunctival fever	108	92	88	53	0.20
Group A streptococcal pharyngitis	339	291	338	387	1.49
Infectious gastroenteritis	943	845	840	965	3.71
Chickenpox	97	106	128	114	0.44
Hand, foot, and mouth disease	307	229	160	194	0.75
Erythema infectiosum	100	86	82	94	0.36
Exanthem subitum	175	154	157	147	0.57
Pertussis	3	3	4	4	0.02
Herpangina	406	226	158	147	0.57
Mumps	66	56	73	74	0.28
Kawasaki disease	3	2	3	3	0.01
Cold with exanthems by Enterovirus	41	34	23	26	0.10
Influenza	16	51	37	31	0.08
Acute hemorrhagic conjunctivitis	1			1	0.03
Epidemic keratoconjunctivitis	22	21	24	19	0.50
Bacterial meningitis					
Aseptic meningitis	5	1	7	2	0.08
Mycoplasma pneumonia	9	4	9	7	0.28
Chlamydial pneumonia (excluding psittacosis)	1				
Infectious gastroenteritis (only by Rotavirus)				1	0.04
Influenza-Associated Hospitalizations					

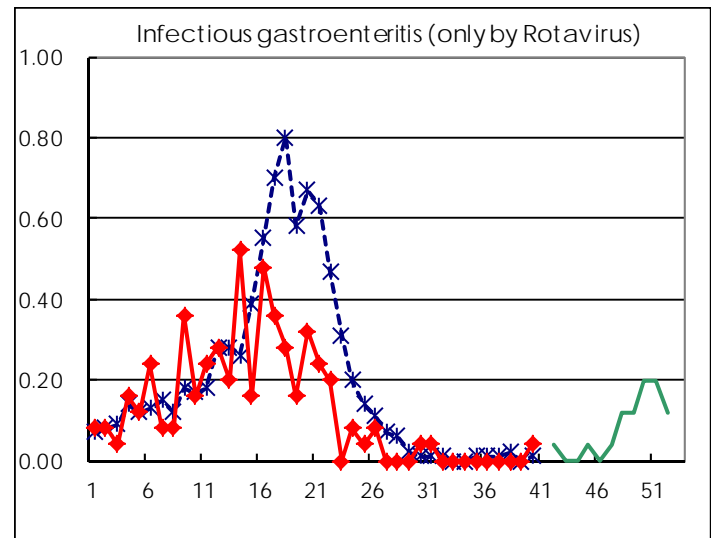
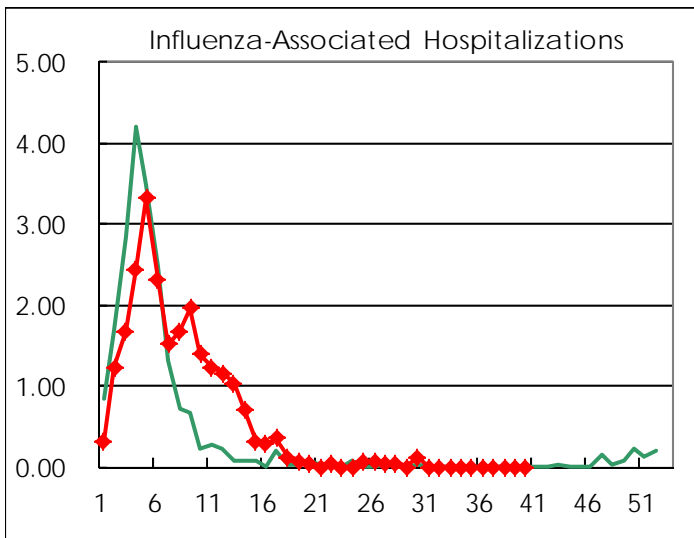
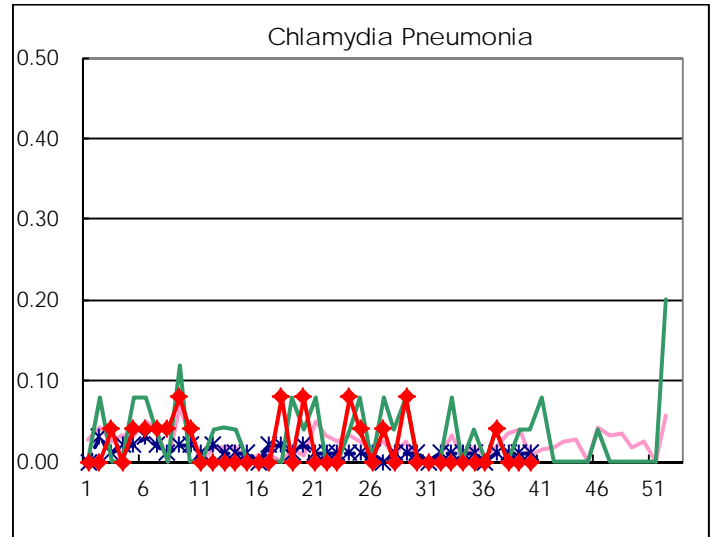
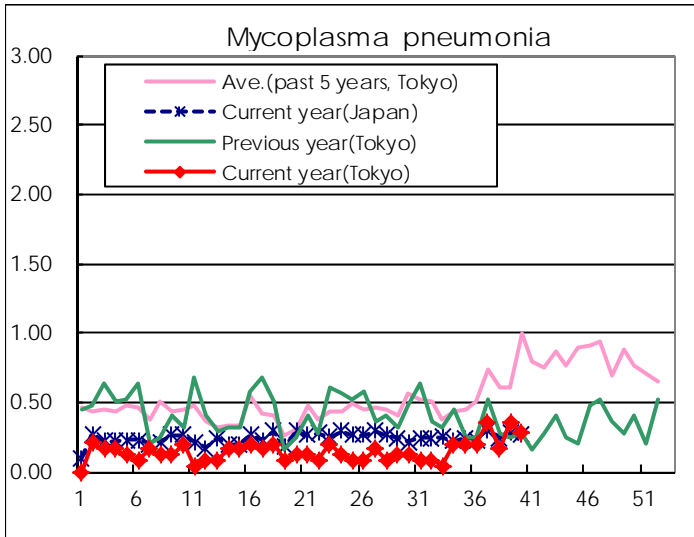
(Blank means 0.)

Disease Trend Graph (weekly reported cases per sentinel in comparison)









Number of sentinel facilities for weekly reporting		
Types of sentinels	Number of sentinels	Sentinels having reported
Pediatric	264	260
Influenza	419	409
Ophthalmic	39	38
Specially-designated	25	25

Tokyo Metropolitan Government
Infectious Disease Surveillance Center