
INFECTIOUS DISEASES WEEKLY REPORT

TOKYO iDWR

Tokyo Metropolitan Infectious Disease Surveillance Center

23 October 2014 / Number 42

Surveillance System in Tokyo, Japan

The infectious diseases which all physicians must report

All physicians must report to health centers the incidence of the diseases which are shown at page one. Health centers electronically report the individual cases to Tokyo Metropolitan Infectious Disease Surveillance Center.

The infectious diseases required to be reported by the sentinels

The numbers of patients who visit the sentinel clinics or hospitals during a week are reported to health centers in Tokyo. And they electronically report the numbers to Tokyo Metropolitan Infectious Disease Surveillance Center. We have about 500 sentinel clinics and hospitals in Tokyo.

1st Week is early January and 52nd Week is end of December.

Tokyo Metropolitan Institute of Public Health

TEL:81-3-3363-3213 FAX:81-3-5332-7365

e-mail:idsc@tokyo-eiken.go.jp

URL:idsc.tokyo-eiken.go.jp/

Number of patients with the diseases which all physicians must report

Category	Diseases	Tokyo					Japan	
		39th	40th	41st	42nd	Cum 2014	42nd	Cum 2014
I	Ebola hemorrhagic fever							
	Crimean-Congo hemorrhagic fever							
	Smallpox							
	South American hemorrhagic fever							
	Plague							
	Marburg disease							
	Lassa fever							
II	Acute poliomyelitis							
	Tuberculosis	65	79	79	48	3,205	309	20,810
	Diphtheria							
	Severe Acute Respiratory Syndrome(SARS)							
	Avian influenza H5N1							
※	Middle East Respiratory Syndrome (MERS)							
	Avian influenza H7N9							
III	Cholera					3		4
	Shigellosis		2			30	6	105
	Enterohemorrhagic Escherichia coli infection	12	5	2	5	326	51	3,641
	Typhoid fever	2	2	1		25	5	48
	Paratyphoid fever					7		15
IV	Hepatitis E	1		1		22		113
	West Nile fever							
	Hepatitis A	1	1			31		410
	Echinococcosis							15
	Yellow fever							
	Psittacosis	1				3		8
	Omsk hemorrhagic fever							
	Relapsing fever							1
	Kyasanur forest disease							
	Q fever							1
	Rabies							
	Coccidioidomycosis							1
	Monkeypox							
	Severe Fever with Thrombocytopenia Syndrome							56
	Hemorrhagic fever with renal syndrome							
	Western equine encephalitis							
	Tick-borne encephalitis							
	Anthrax							
	Chikungunya fever					2		10
	Scrub typhus(Tsutsugamushi disease)		1			6	2	119
	Dengue fever	10	7	3	1	157	3	315
	Eastern equine encephalitis							
	Avian influenza (excluding H5N1 and H7N9)							
	Nipah virus infection							
	Japanese spotted fever						7	197
	Japanese encephalitis							2
	Hantavirus pulmonary syndrome							
	Herpes B virus infection							
	Glanders							
	Brucellosis					4		10
	Venezuelan equine encephalitis							
	Hendra virus infection							
	Epidemic typhus							
Botulism							1	
Malaria	1				24	1	53	
Tularemia							1	
Lyme disease					1		11	
Lyssavirus infection(excluding rabies)								
Rift valley fever								
Melioidosis								
Legionellosis	5	2		5	88	25	985	
Leptospirosis			1		3		34	
Rocky mountain spotted fever								

Category	Diseases	Tokyo					Japan	
		39th	40th	41st	42nd	Cum 2014	42nd	Cum 2014
V	Amebiasis	4	2	5	7	182	18	897
	Viral hepatitis(excluding hepatitis A and E)	1		2		41	3	196
	CRE infection		11	3		14	8	77
	Acute encephalitis(excluding JE and WNE)	1		1	1	40	4	374
	Cryptosporidiosis		6			81		85
	Creutzfeldt-Jakob disease	1		2		12		140
	Severe invasive streptococcal infections(TSLS)		1			39	3	217
	Acquired immunodeficiency syndrome (AIDS)	12	10	10	9	416	10	1,218
	Giardiasis	1				13	5	55
	Invasive <i>Haemophilus influenzae</i> disease					19	4	161
	Invasive meningococcal disease		1			6		28
	Invasive pneumococcal disease	2	5	4	4	174	13	1,361
	Varicella (limited to hospitalized case)	2	2	1		5	4	41
	Congenital rubella syndrome					3		9
	Syphilis	9	8	12	13	405	15	1,308
	Disseminated cryptococcosis		1		1	2	2	8
	Tetanus					10	5	111
	Vancomycin-resistant <i>S. aureus</i> infection							
	Vancomycin-resistant <i>Enterococcus</i> infection					3		39
	Rubella	1		1	4	92	4	295
Measles			1		88		451	
MDRA infection	1				1		4	

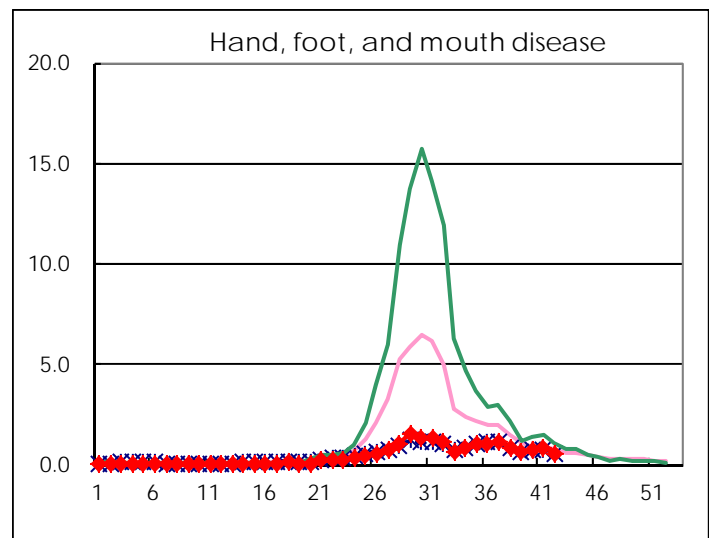
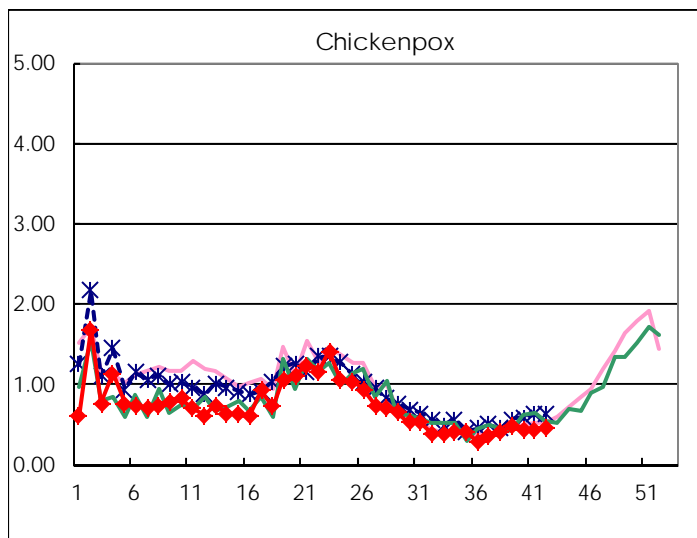
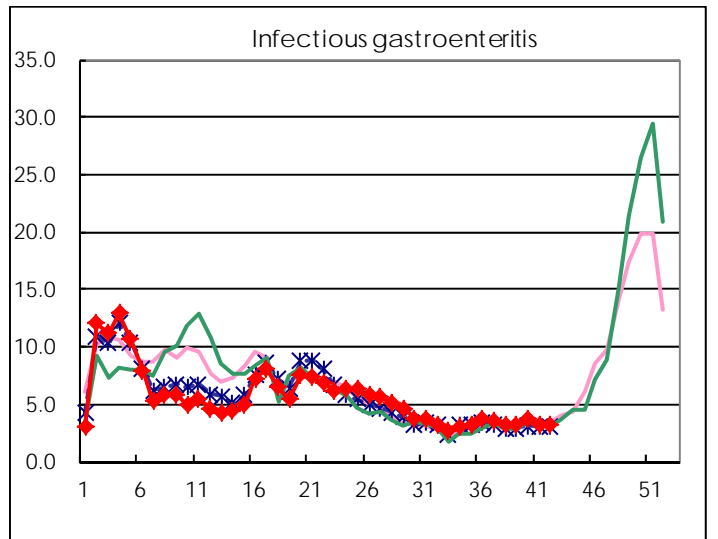
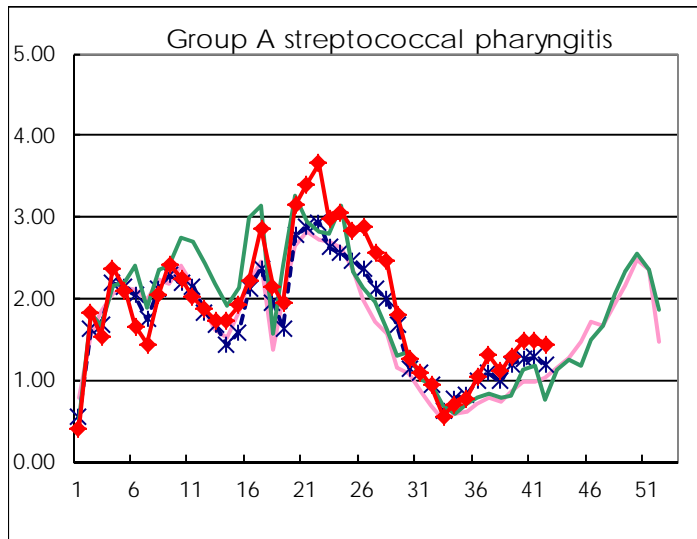
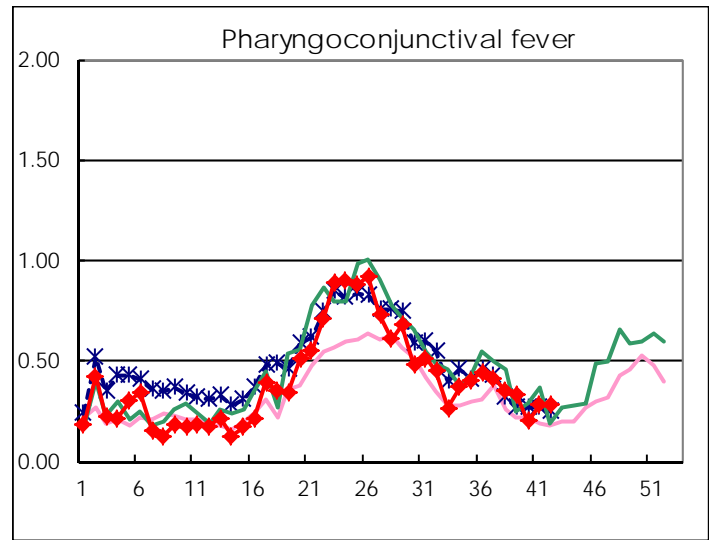
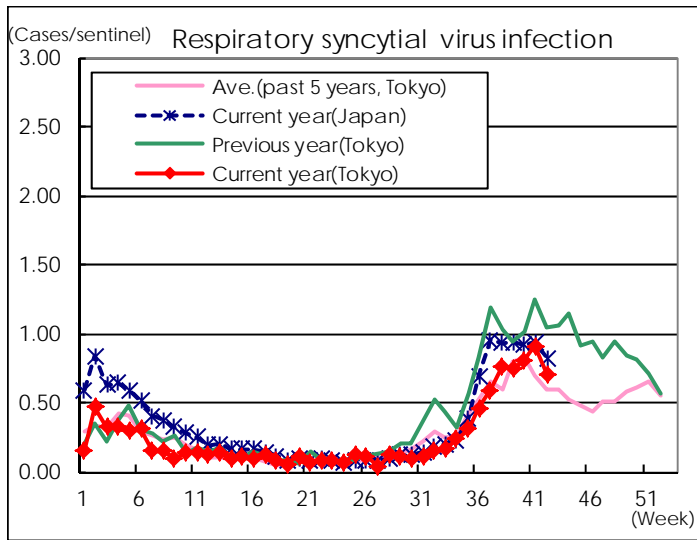
※ Designated infectious disease

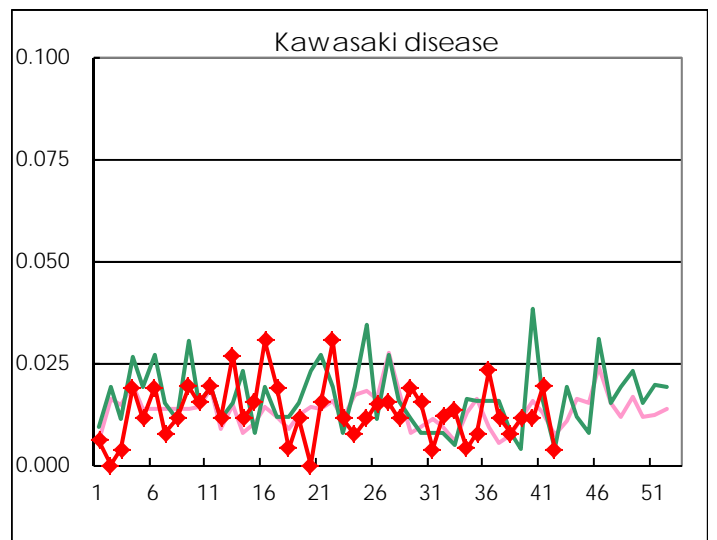
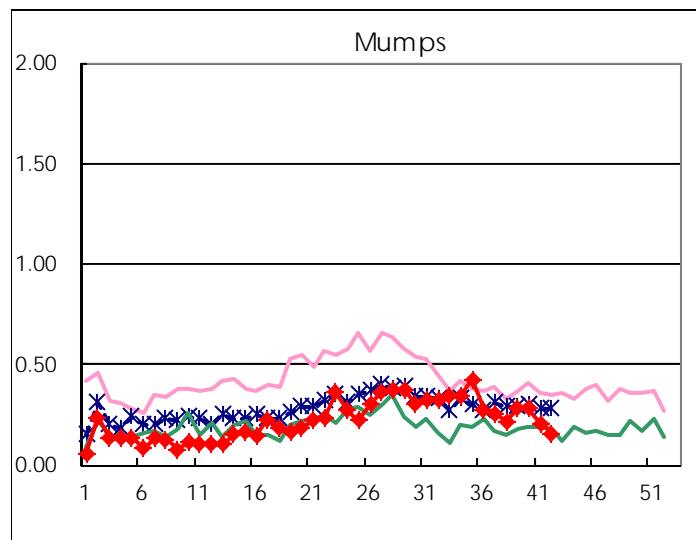
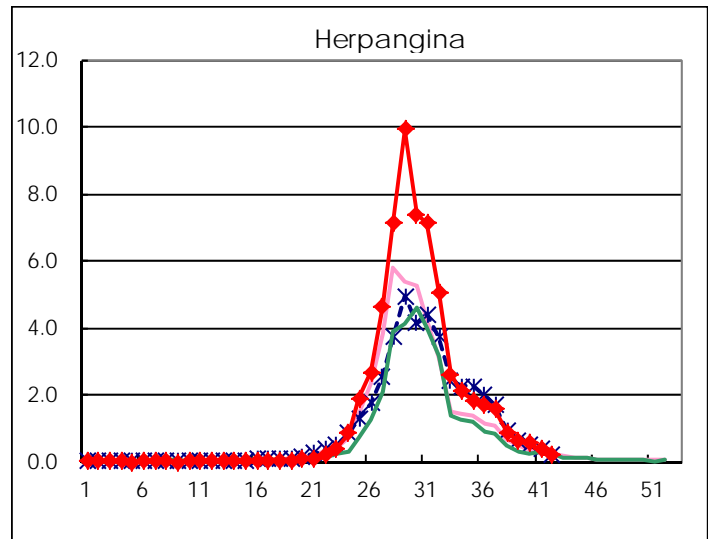
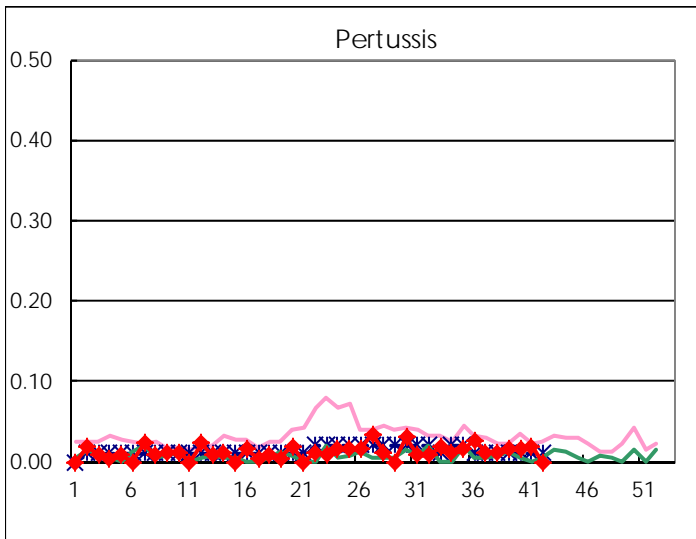
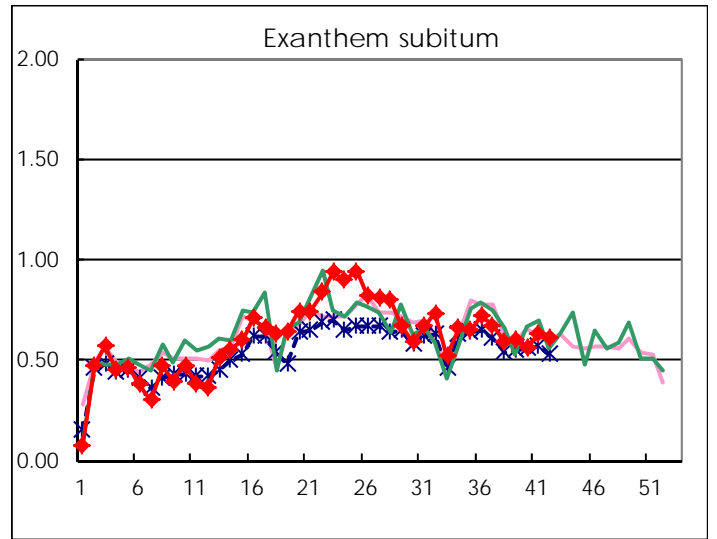
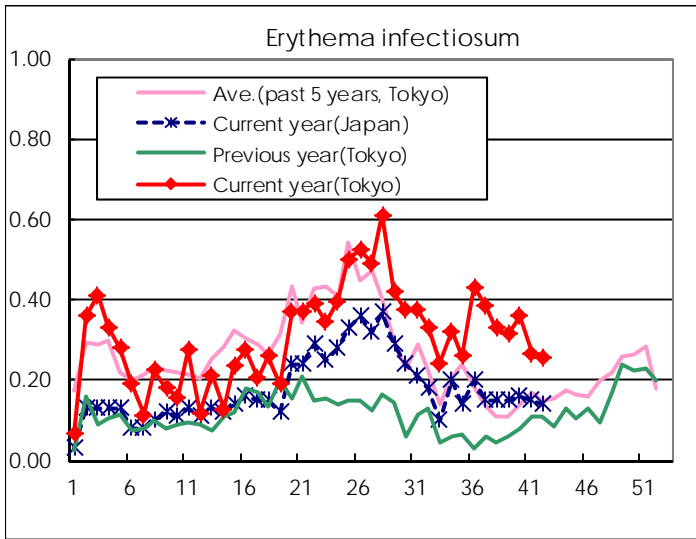
Number of patients with the diseases to be reported
by the designated clinics and hospitals

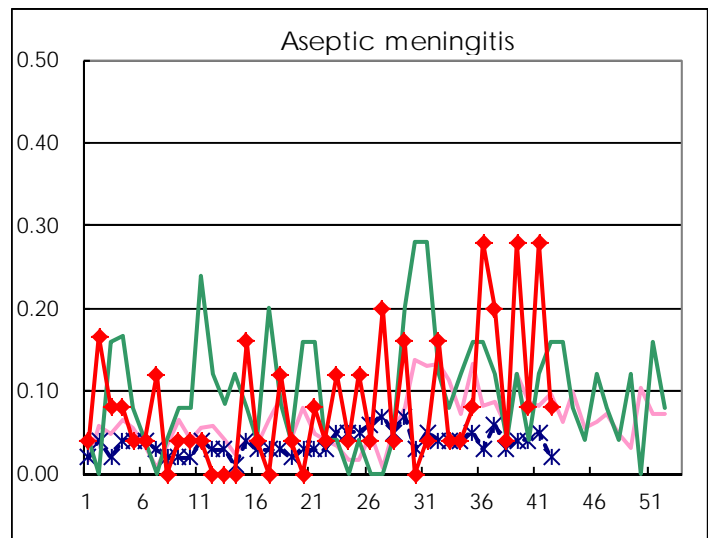
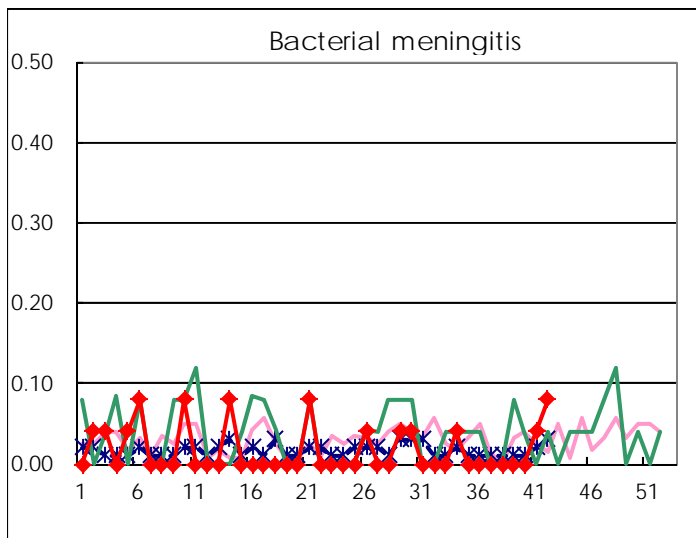
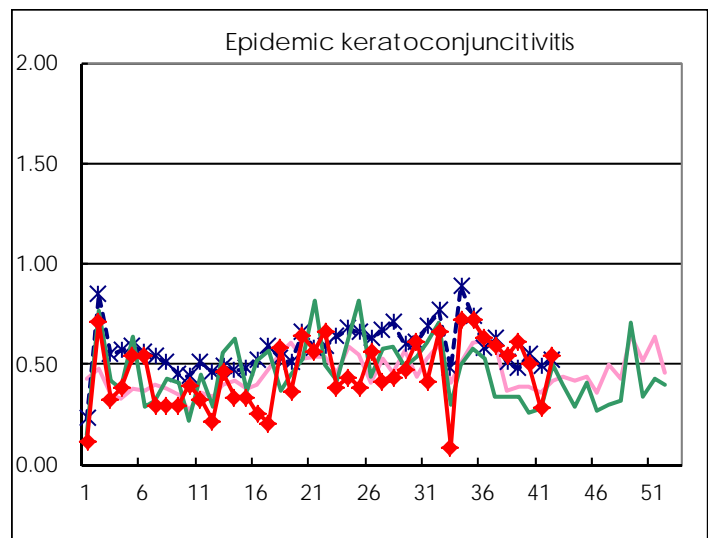
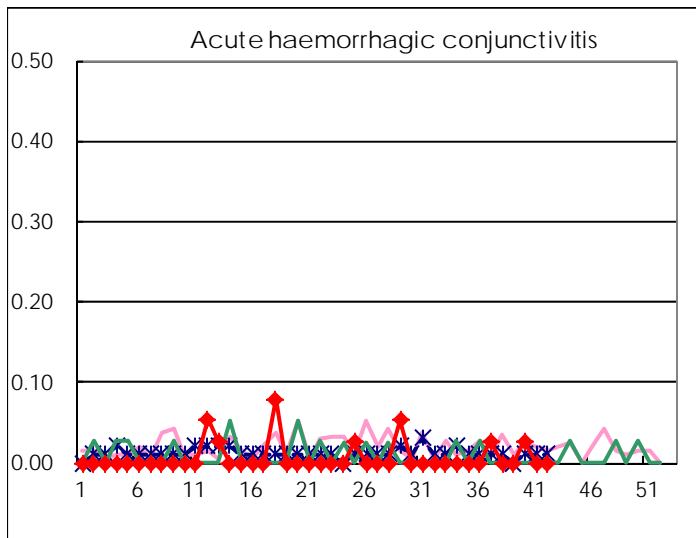
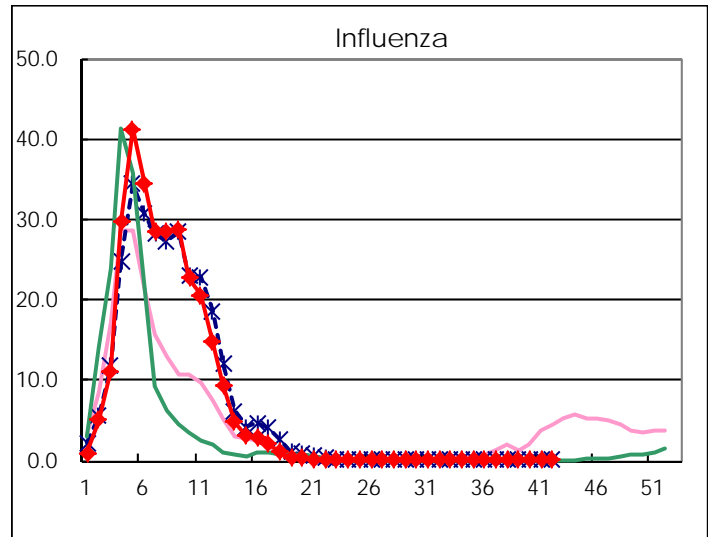
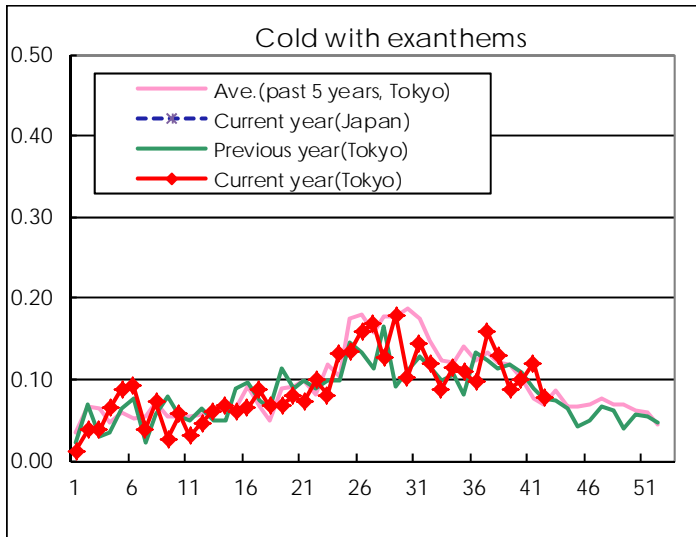
Diseases	Tokyo				
	39th	40th	41st	42nd	/sentinel
Respiratory syncytial virus infection	194	210	236	182	0.71
Pharyngoconjunctival fever	88	53	73	72	0.28
Group A streptococcal pharyngitis	338	387	382	369	1.43
Infectious gastroenteritis	840	968	852	842	3.26
Chickenpox	128	114	114	119	0.46
Hand, foot, and mouth disease	160	194	223	152	0.59
Erythema infectiosum	82	94	69	66	0.26
Exanthem subitum	157	148	163	159	0.62
Pertussis	4	4	5		
Herpangina	158	147	97	60	0.23
Mumps	73	74	53	41	0.16
Kawasaki disease	3	3	5	1	0.00
Cold with exanthems	23	26	31	20	0.08
Influenza	37	31	26	30	0.07
Acute hemorrhagic conjunctivitis		1			
Epidemic keratoconjunctivitis	24	19	11	21	0.54
Bacterial meningitis			1	2	0.08
Aseptic meningitis	7	2	7	2	0.08
<i>Mycoplasma pneumoniae</i>	9	7	8	11	0.44
<i>Chlamydial pneumoniae</i> (excluding psittacosis)					
Infectious gastroenteritis (only by Rotavirus)		1			
Influenza-Associated Hospitalizations					

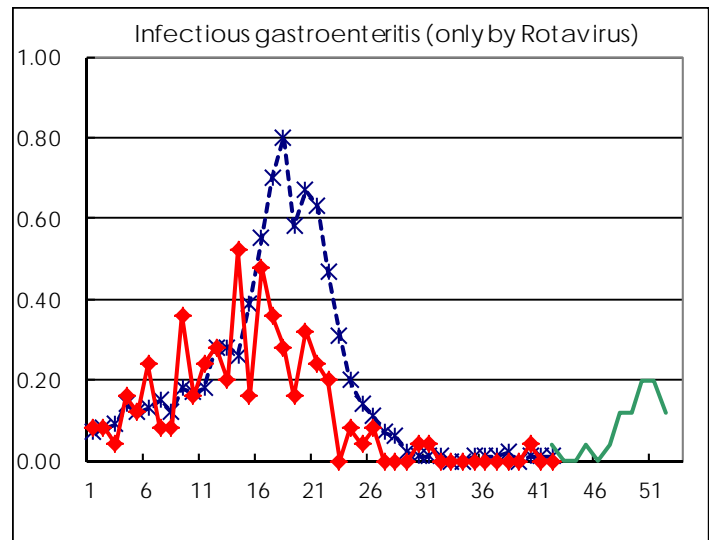
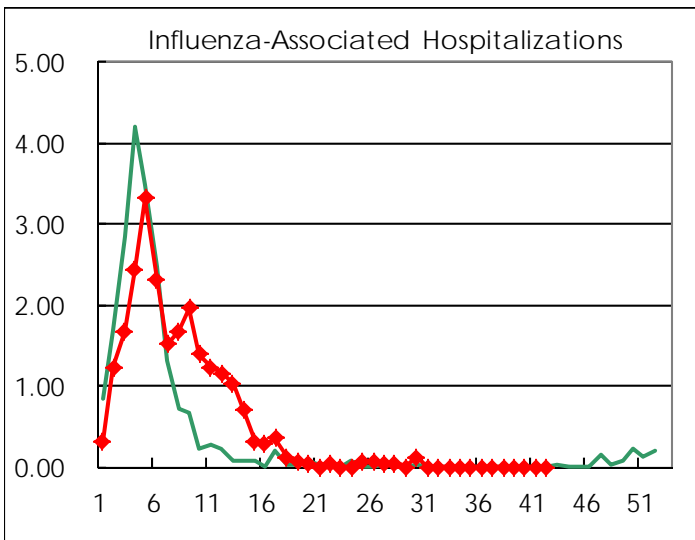
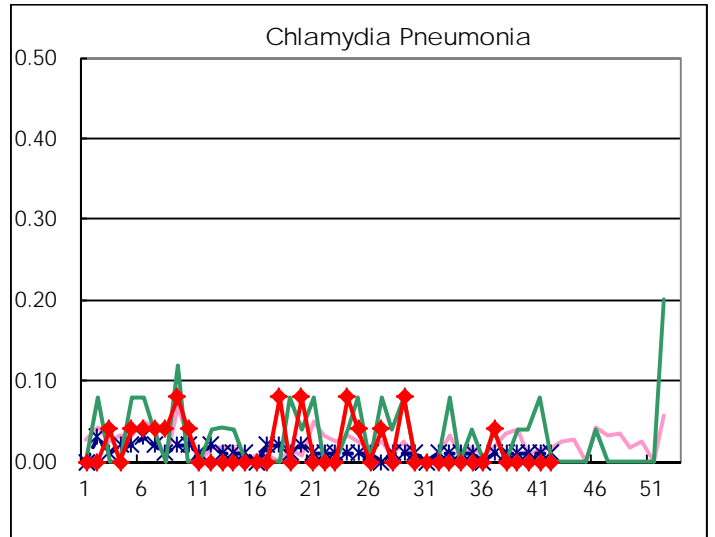
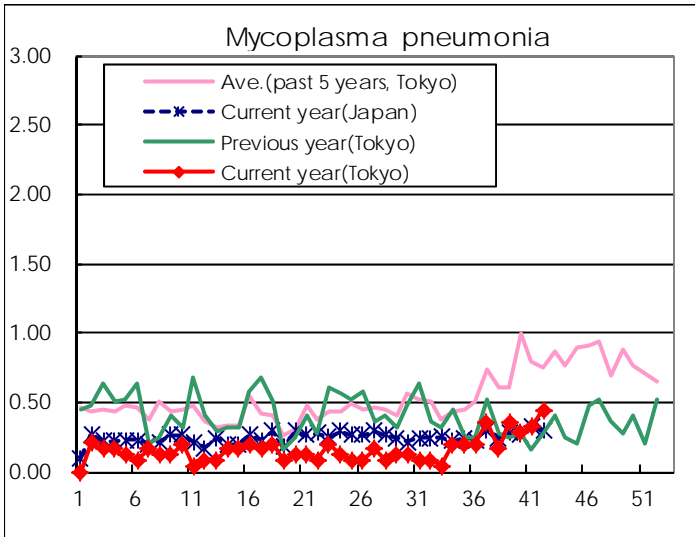
(Blank means 0.)

Disease Trend Graph (weekly reported cases per sentinel in comparison)









Number of sentinel facilities for weekly reporting		
Types of sentinels	Number of sentinels	Sentinels having reported
Pediatric	264	258
Influenza	419	406
Ophthalmic	39	39
Specially-designated	25	25

Tokyo Metropolitan Government
Infectious Disease Surveillance Center