
INFECTIOUS DISEASES WEEKLY REPORT

TOKYO iDWR

Tokyo Metropolitan Infectious Disease Surveillance Center

30 October 2014 / Number 43

Surveillance System in Tokyo, Japan

The infectious diseases which all physicians must report

All physicians must report to health centers the incidence of the diseases which are shown at page one. Health centers electronically report the individual cases to Tokyo Metropolitan Infectious Disease Surveillance Center.

The infectious diseases required to be reported by the sentinels

The numbers of patients who visit the sentinel clinics or hospitals during a week are reported to health centers in Tokyo. And they electronically report the numbers to Tokyo Metropolitan Infectious Disease Surveillance Center. We have about 500 sentinel clinics and hospitals in Tokyo.

1st Week is early January and 52nd Week is end of December.

Tokyo Metropolitan Institute of Public Health

TEL:81-3-3363-3213 FAX:81-3-5332-7365

e-mail:idsc@tokyo-eiken.go.jp

URL:idsc.tokyo-eiken.go.jp/

Number of patients with the diseases which all physicians must report

Category	Diseases	Tokyo					Japan	
		40th	41st	42nd	43rd	Cum 2014	43rd	Cum 2014
I	Ebola hemorrhagic fever							
	Crimean-Congo hemorrhagic fever							
	Smallpox							
	South American hemorrhagic fever							
	Plague							
	Marburg disease							
	Lassa fever							
II	Acute poliomyelitis							
	Tuberculosis	80	79	55	67	3,286	392	21,347
	Diphtheria							
	Severe Acute Respiratory Syndrome(SARS)							
	Avian influenza H5N1							
※	Middle East Respiratory Syndrome (MERS)							
	Avian influenza H7N9							
III	Cholera					3		4
	Shigellosis	2				30	7	113
	Enterohemorrhagic Escherichia coli infection	5	2	5	5	331	45	3,691
	Typhoid fever	2	1		1	26	1	49
	Paratyphoid fever					7		15
IV	Hepatitis E		1			22	3	119
	West Nile fever							
	Hepatitis A	1				31	5	415
	Echinococcosis							15
	Yellow fever							
	Psittacosis					3		8
	Omsk hemorrhagic fever							
	Relapsing fever							1
	Kyasanur forest disease							
	Q fever							1
	Rabies							
	Coccidioidomycosis							1
	Monkeypox							
	Severe Fever with Thrombocytopenia Syndrome						1	57
	Hemorrhagic fever with renal syndrome							
	Western equine encephalitis							
	Tick-borne encephalitis							
	Anthrax							
	Chikungunya fever				1	3	1	11
	Scrub typhus(Tsutsugamushi disease)	1			2	8	6	126
	Dengue fever	7	3	1	2	159	2	317
	Eastern equine encephalitis							
	Avian influenza (excluding H5N1 and H7N9)							
	Nipah virus infection							
	Japanese spotted fever						4	202
	Japanese encephalitis							2
	Hantavirus pulmonary syndrome							
	Herpes B virus infection							
	Glanders							
	Brucellosis					4		10
	Venezuelan equine encephalitis							
	Hendra virus infection							
	Epidemic typhus							
Botulism							1	
Malaria					24		53	
Tularemia							1	
Lyme disease				1	2	1	12	
Lyssavirus infection(excluding rabies)								
Rift valley fever								
Melioidosis								
Legionellosis	2		5	2	90	17	1,005	
Leptospirosis		1			3	2	36	
Rocky mountain spotted fever								

Category	Diseases	Tokyo					Japan	
		40th	41st	42nd	43rd	Cum 2014	43rd	Cum 2014
V	Amebiasis	2	5	7	10	192	18	926
	Viral hepatitis(excluding hepatitis A and E)		2			41		197
	CRE infection	11	3		3	17	13	101
	Acute encephalitis(excluding JE and WNE)		1	1		40	5	380
	Cryptosporidiosis	6				81		85
	Creutzfeldt-Jakob disease		2			12	2	142
	Severe invasive streptococcal infections(TSLs)	1				39	1	219
	Acquired immunodeficiency syndrome (AIDS)	10	10	9	8	424	15	1,242
	Giardiasis					13		55
	Invasive <i>Haemophilus influenzae</i> disease				1	20	2	164
	Invasive meningococcal disease	1				6		28
	Invasive pneumococcal disease	5	4	4	10	185	16	1,390
	Varicella (limited to hospitalized case)	2	1		1	6	6	56
	Congenital rubella syndrome					3		9
	Syphilis	8	12	13	9	414	20	1,341
	Disseminated cryptococcosis	1		1		2	1	9
	Tetanus					10	3	114
	Vancomycin-resistant <i>S. aureus</i> infection							
	Vancomycin-resistant Enterococcus infection					3	2	42
	Rubella		1	4	1	93	2	298
Measles		1			88		451	
MDRA infection					1		5	

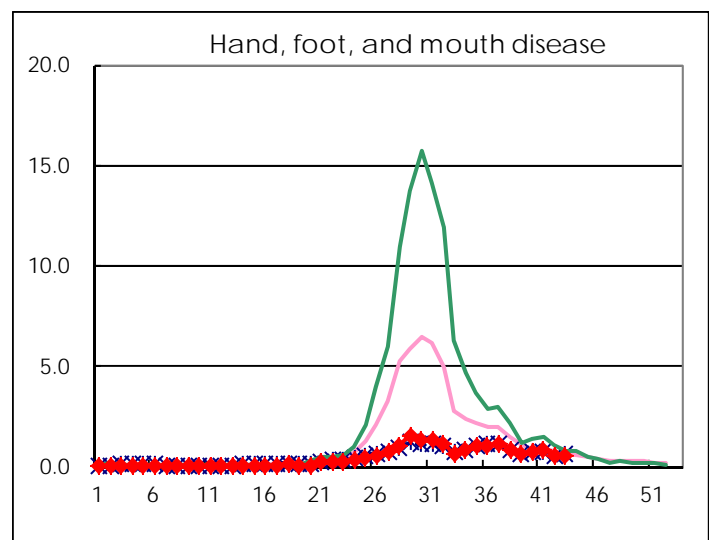
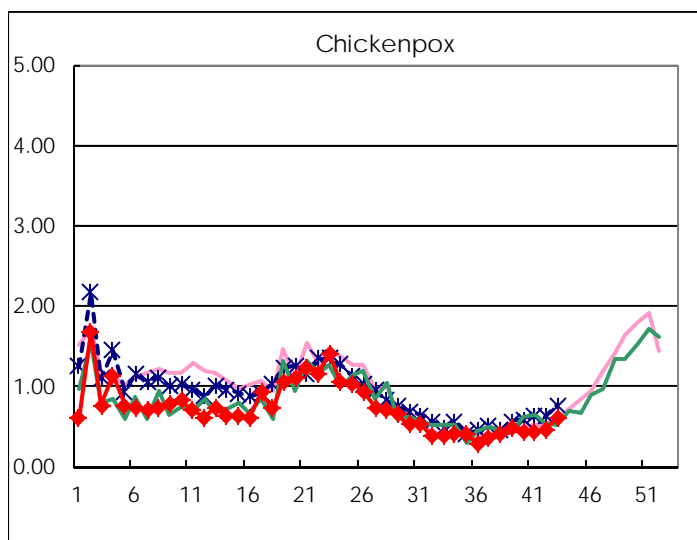
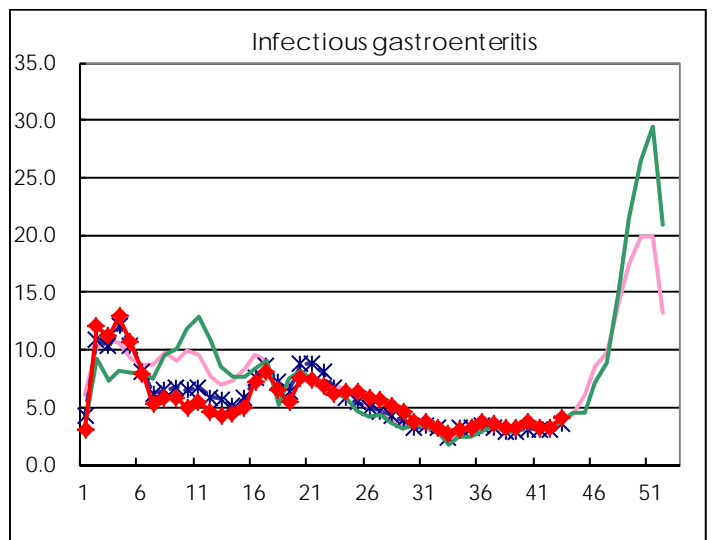
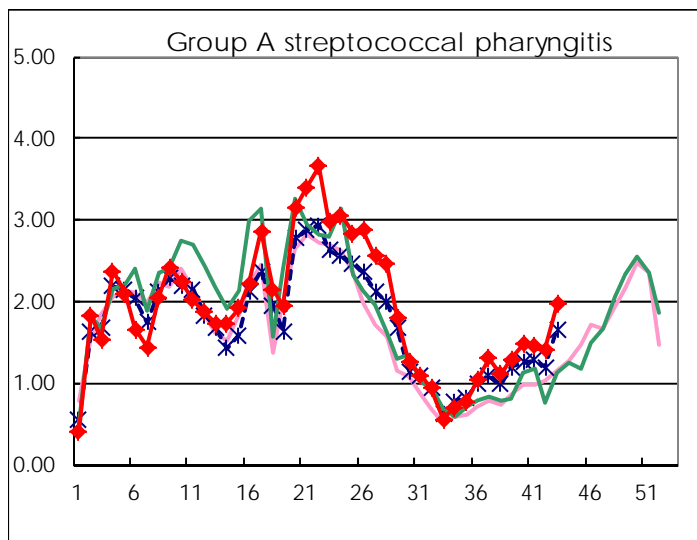
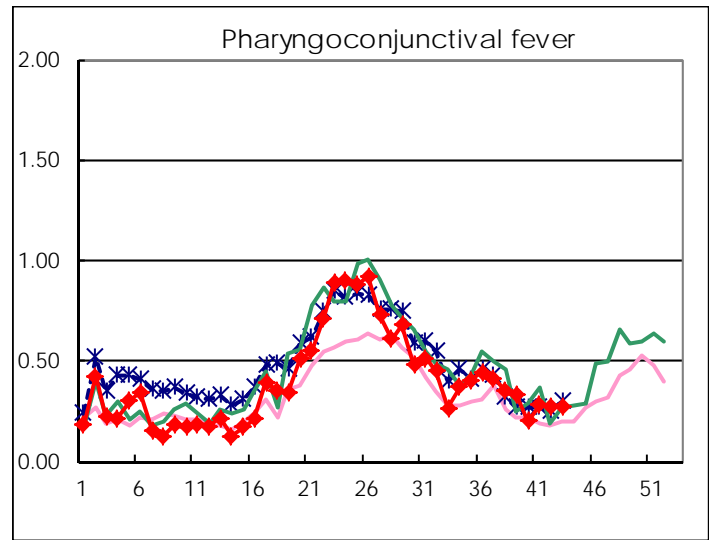
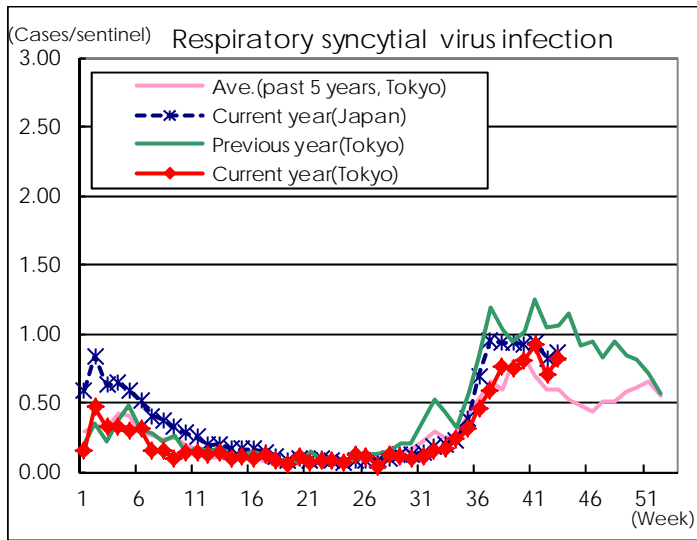
※ Designated infectious disease

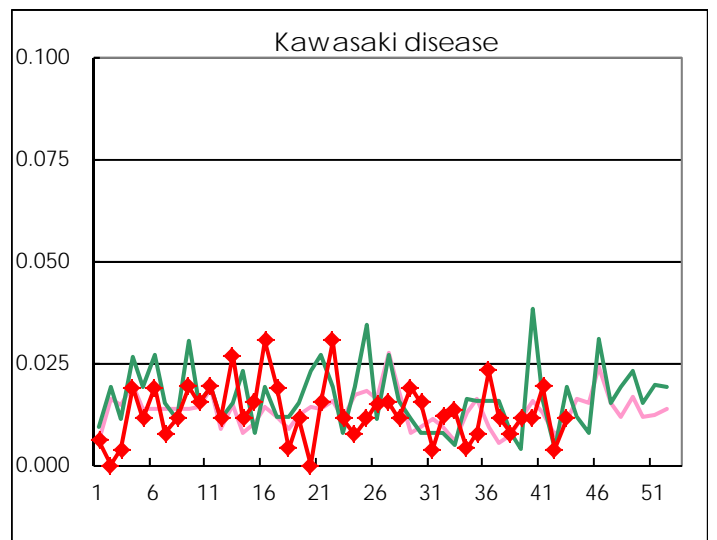
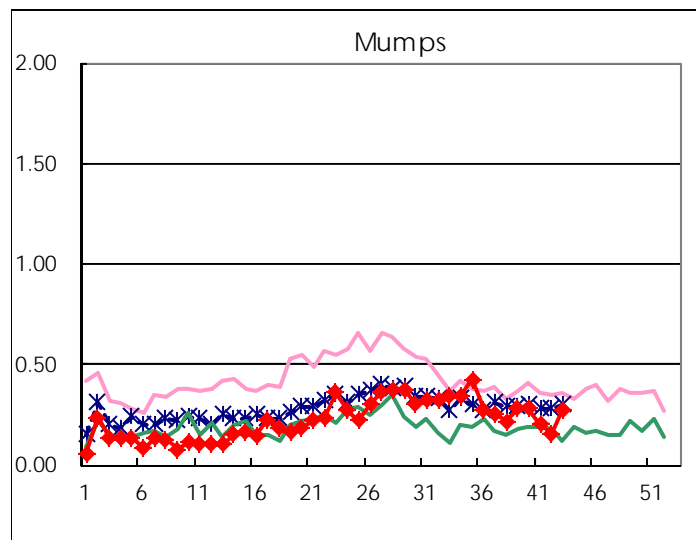
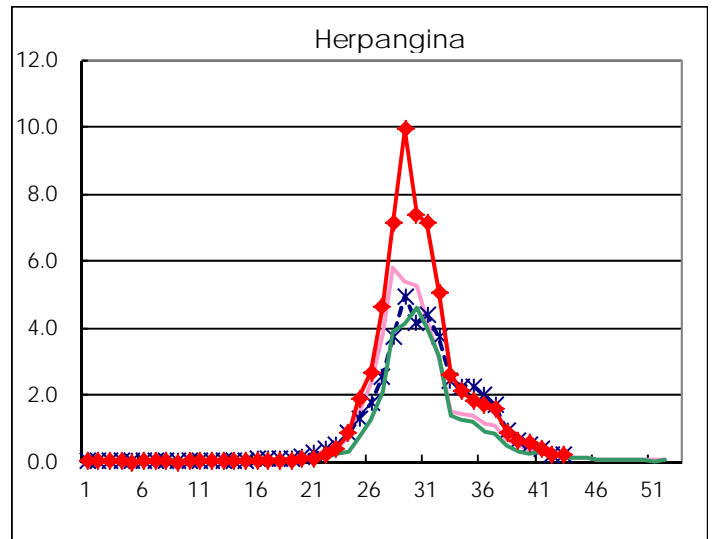
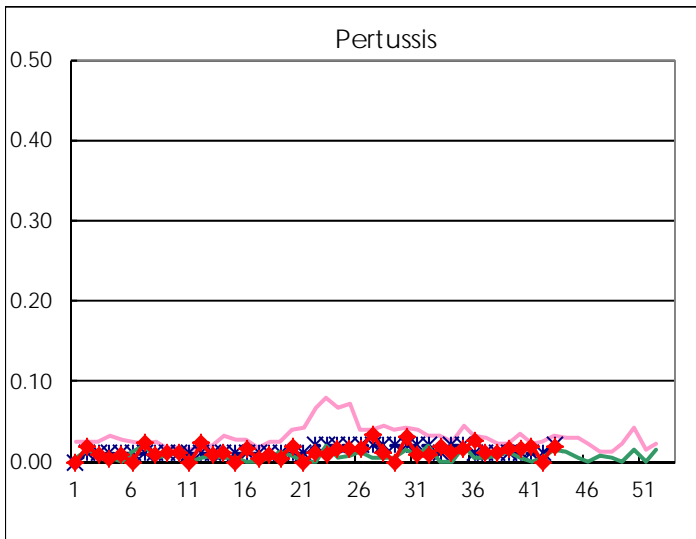
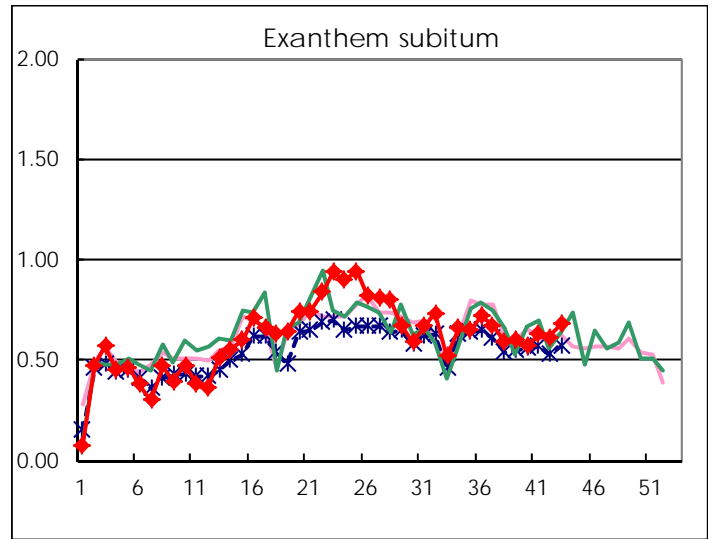
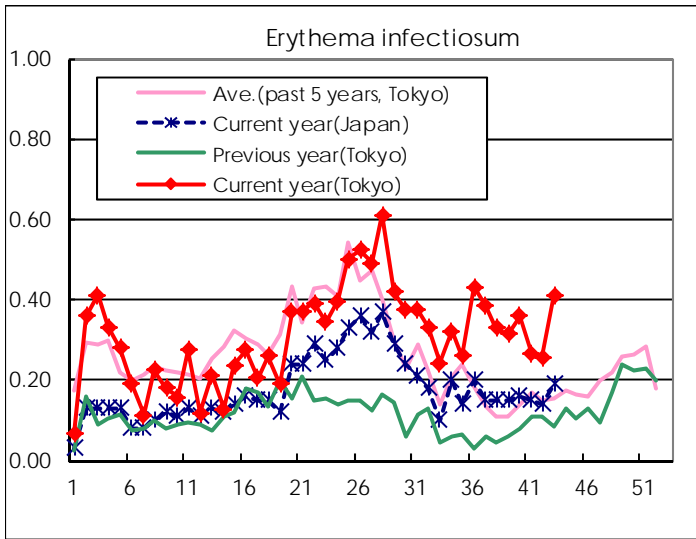
Number of patients with the diseases to be reported
by the designated clinics and hospitals

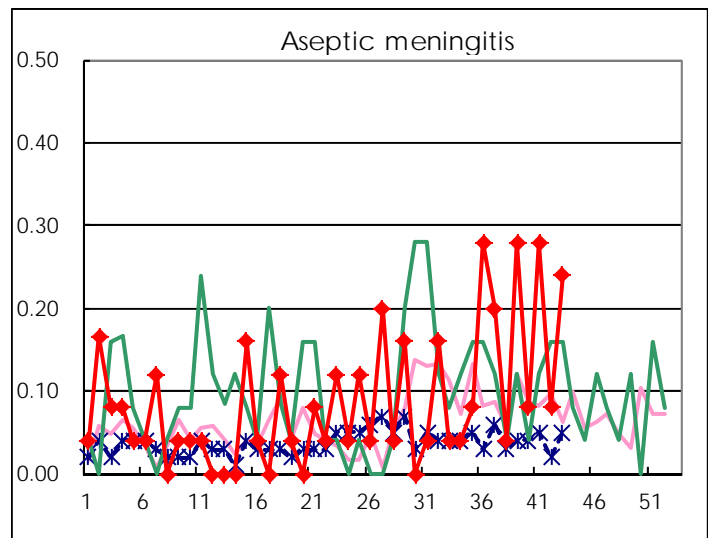
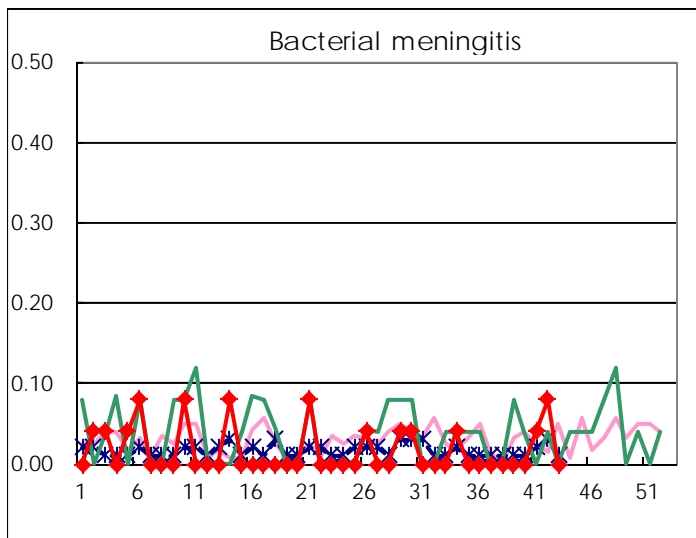
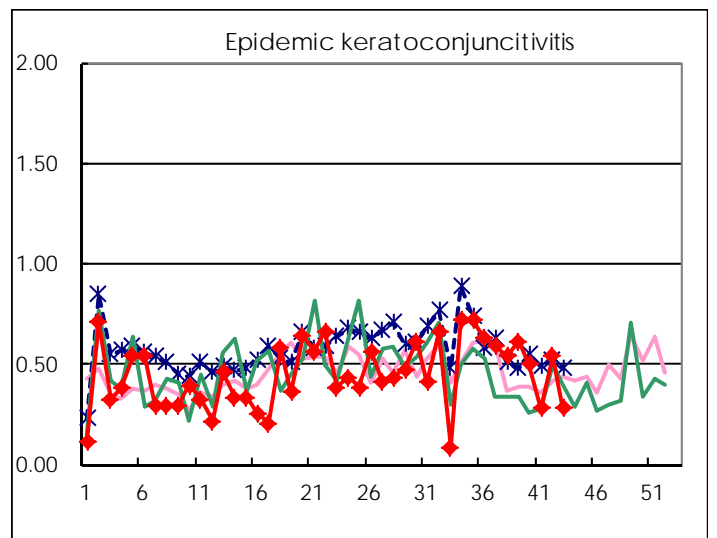
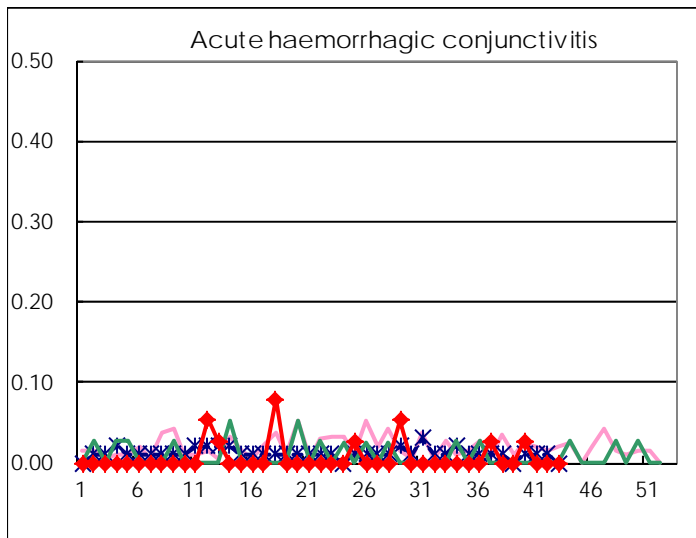
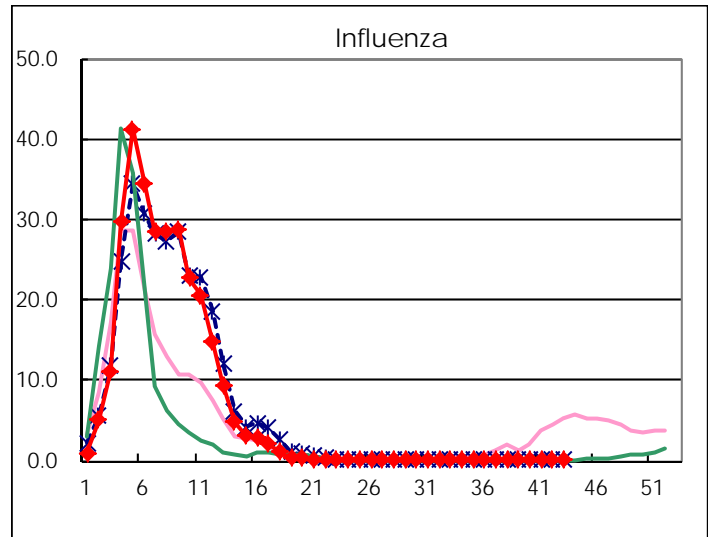
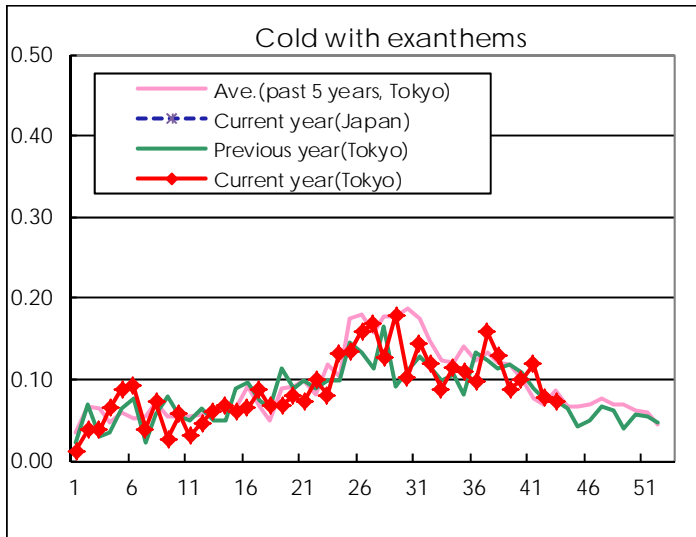
Diseases	Tokyo				
	40th	41st	42nd	43rd	/sentinel
Respiratory syncytial virus infection	211	238	182	218	0.83
Pharyngoconjunctival fever	53	73	72	73	0.28
Group A streptococcal pharyngitis	387	382	369	519	1.97
Infectious gastroenteritis	970	856	849	1,074	4.07
Chickenpox	114	114	120	164	0.62
Hand, foot, and mouth disease	194	223	153	138	0.52
Erythema infectiosum	94	69	67	109	0.41
Exanthem subitum	149	163	160	179	0.68
Pertussis	4	5		5	0.02
Herpangina	147	97	62	58	0.22
Mumps	74	53	41	72	0.27
Kawasaki disease	3	5	1	3	0.01
Cold with exanthems	26	31	20	19	0.07
Influenza	31	26	30	32	0.08
Acute hemorrhagic conjunctivitis	1				
Epidemic keratoconjunctivitis	19	11	21	11	0.28
Bacterial meningitis		1	2		
Aseptic meningitis	2	7	2	6	0.24
Mycoplasma pneumonia	7	8	11	4	0.16
Chlamydial pneumonia (excluding psittacosis)					
Infectious gastroenteritis (only by Rotavirus)	1				
Influenza-Associated Hospitalizations					

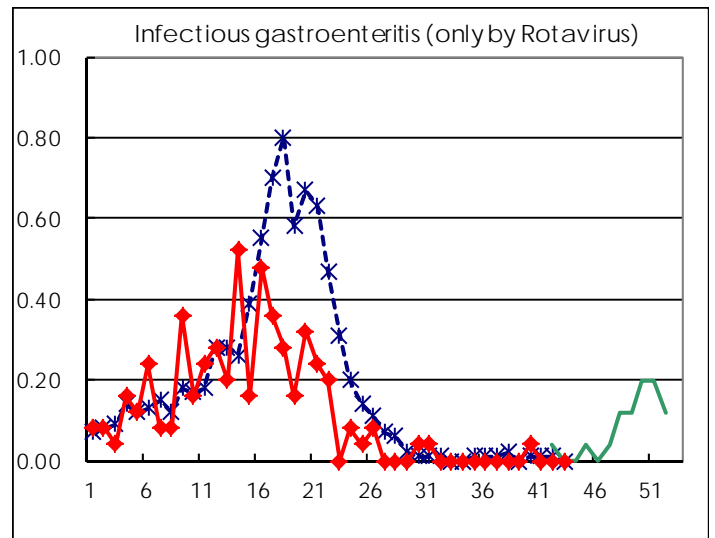
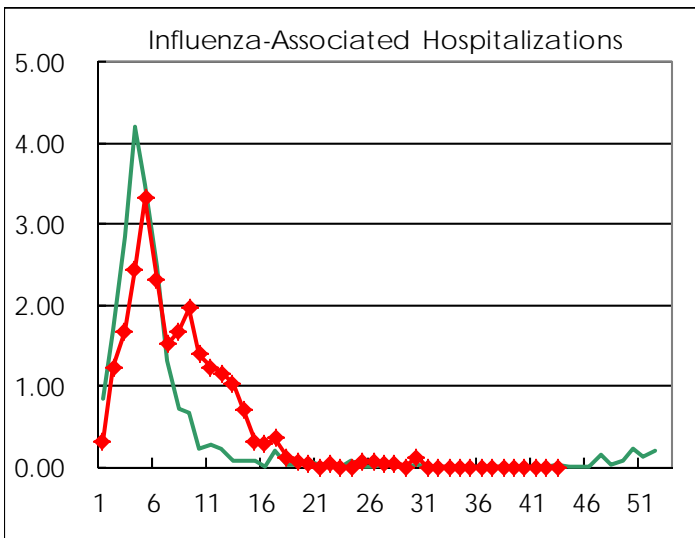
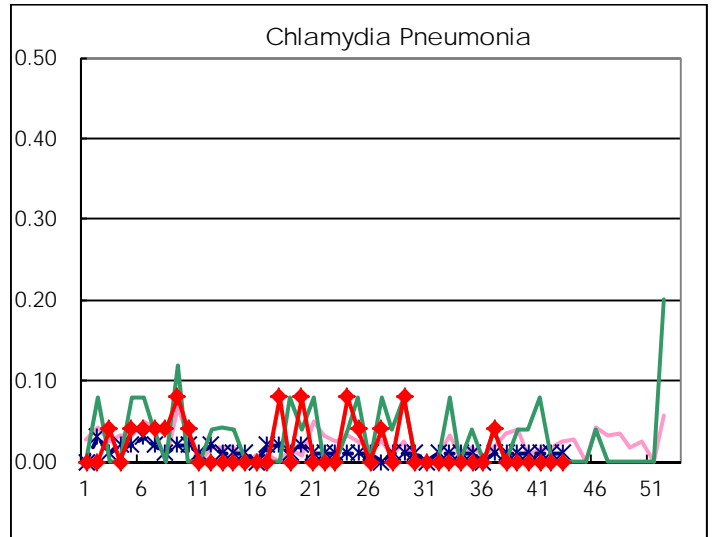
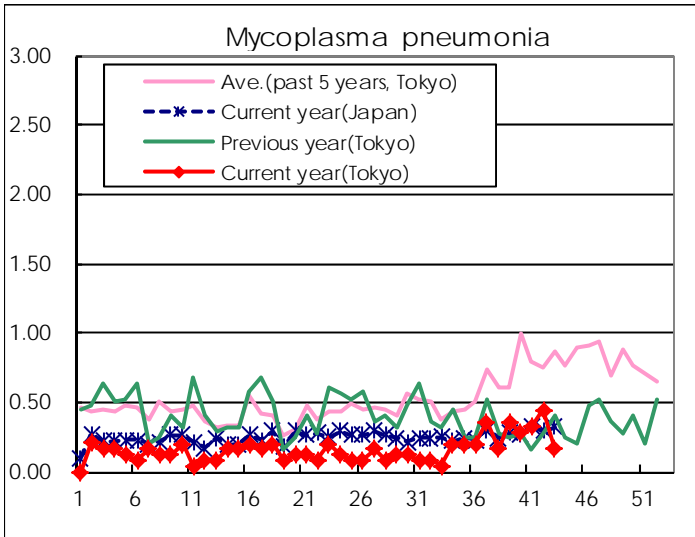
(Blank means 0.)

Disease Trend Graph (weekly reported cases per sentinel in comparison)









Number of sentinel facilities for weekly reporting		
Types of sentinels	Number of sentinels	Sentinels having reported
Pediatric	264	264
Influenza	419	413
Ophthalmic	39	39
Specially-designated	25	25

Tokyo Metropolitan Government
Infectious Disease Surveillance Center