

---

INFECTIOUS DISEASES WEEKLY REPORT

# TOKYO IDWR

Tokyo Metropolitan Infectious Disease Surveillance Center

---

## 6 November 2014 / Number 44

### Surveillance System in Tokyo, Japan

The infectious diseases which all physicians must report

All physicians must report to health centers the incidence of the diseases which are shown at page one. Health centers electronically report the individual cases to Tokyo Metropolitan Infectious Disease Surveillance Center.

The infectious diseases required to be reported by the sentinels

The numbers of patients who visit the sentinel clinics or hospitals during a week are reported to health centers in Tokyo. And they electronically report the numbers to Tokyo Metropolitan Infectious Disease Surveillance Center. We have about 500 sentinel clinics and hospitals in Tokyo.

1st Week is early January and 52nd Week is end of December.

Tokyo Metropolitan Institute of Public Health

TEL:81-3-3363-3213 FAX:81-3-5332-7365

e-mail:[idsc@tokyo-eiken.go.jp](mailto:idsc@tokyo-eiken.go.jp)

URL:[idsc.tokyo-eiken.go.jp/](http://idsc.tokyo-eiken.go.jp/)

---

## Number of patients with the diseases which all physicians must report

Category	Diseases	Tokyo					Japan	
		41st	42nd	43rd	44th	Cum 2014	44th	Cum 2014
I	Ebola hemorrhagic fever							
	Crimean-Congo hemorrhagic fever							
	Smallpox							
	South American hemorrhagic fever							
	Plague							
	Marburg disease							
	Lassa fever							
II	Acute poliomyelitis							
	Tuberculosis	79	55	69	71	3,359	316	21,837
	Diphtheria							
	Severe Acute Respiratory Syndrome(SARS)							
	Avian influenza H5N1							
※	Middle East Respiratory Syndrome (MERS)							
	Avian influenza H7N9							
III	Cholera					3		4
	Shigellosis				3	33	11	124
	Enterohemorrhagic Escherichia coli infection	2	5	5	5	336	53	3,769
	Typhoid fever	1		1		26		49
	Paratyphoid fever					7		15
IV	Hepatitis E	1			1	23		121
	West Nile fever							
	Hepatitis A				2	33	2	418
	Echinococcosis							15
	Yellow fever							
	Psittacosis					3		8
	Omsk hemorrhagic fever							
	Relapsing fever							1
	Kyasanur forest disease							
	Q fever							1
	Rabies							
	Coccidioidomycosis							1
	Monkeypox							
	Severe Fever with Thrombocytopenia Syndrome							57
	Hemorrhagic fever with renal syndrome							
	Western equine encephalitis							
	Tick-borne encephalitis							
	Anthrax							
	Chikungunya fever			1		3		11
	Scrub typhus(Tsutsugamushi disease)			2	3	11	9	138
	Dengue fever	3	1	2	1	160	2	319
	Eastern equine encephalitis							
	Avian influenza (excluding H5N1 and H7N9)							
	Nipah virus infection							
	Japanese spotted fever						5	211
	Japanese encephalitis							2
	Hantavirus pulmonary syndrome							
	Herpes B virus infection							
	Glanders							
	Brucellosis					4		10
	Venezuelan equine encephalitis							
	Hendra virus infection							
	Epidemic typhus							
Botulism							1	
Malaria					24		53	
Tularemia							1	
Lyme disease			1		2		14	
Lyssavirus infection(excluding rabies)								
Rift valley fever								
Melioidosis								
Legionellosis		5	3	2	93	24	1,036	
Leptospirosis	1			1	4		36	
Rocky mountain spotted fever								

Category	Diseases	Tokyo					Japan	
		41st	42nd	43rd	44th	Cum 2014	44th	Cum 2014
V	Amebiasis	5	7	10	3	195	8	940
	Viral hepatitis(excluding hepatitis A and E)	2				41		200
	CRE infection	3		3	4	21	3	112
	Acute encephalitis(excluding JE and WNE)	1	1		2	42		382
	Cryptosporidiosis					81		86
	Creutzfeldt-Jakob disease	2			1	13	1	146
	Severe invasive streptococcal infections(TSLS)					39	1	221
	Acquired immunodeficiency syndrome (AIDS)	10	9	8	11	435	17	1,267
	Giardiasis					13		55
	Invasive <i>Haemophilus influenzae</i> disease			1		20	3	167
	Invasive meningococcal disease					6		28
	Invasive pneumococcal disease	4	4	10	5	190	14	1,416
	Varicella (limited to hospitalized case)	1		1		6	6	63
	Congenital rubella syndrome					3		9
	Syphilis	12	13	10	11	426	19	1,377
	Disseminated cryptococcosis		1			2		9
	Tetanus					10	1	115
	Vancomycin-resistant <i>S. aureus</i> infection							
	Vancomycin-resistant Enterococcus infection					3		43
	Rubella	1	4	1	1	94	3	304
Measles	1			1	89	1	453	
MDRA infection		1			2	1	7	

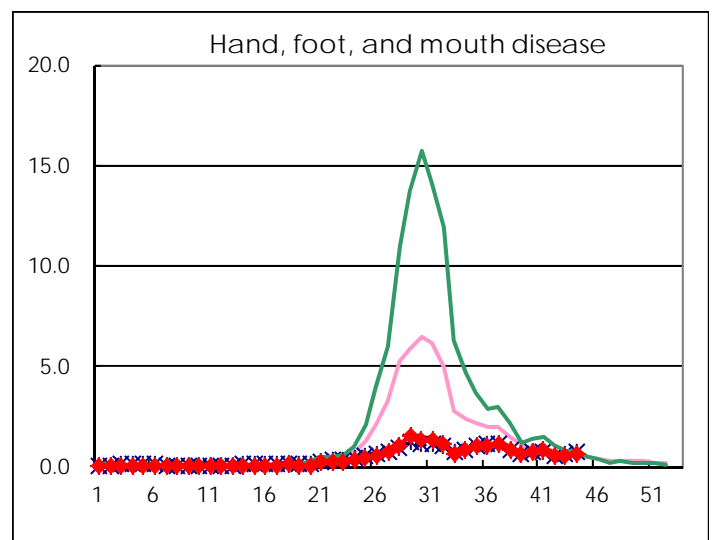
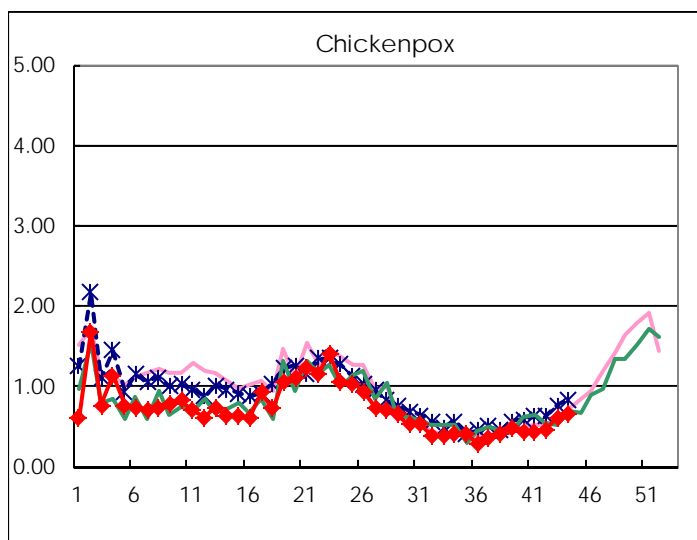
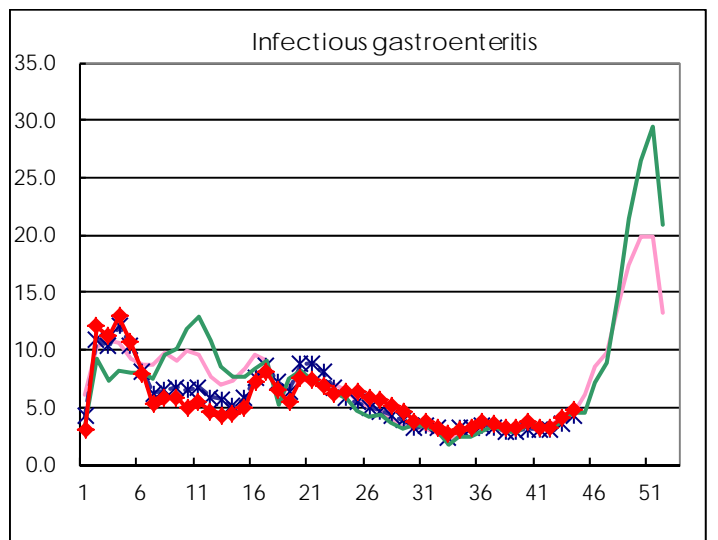
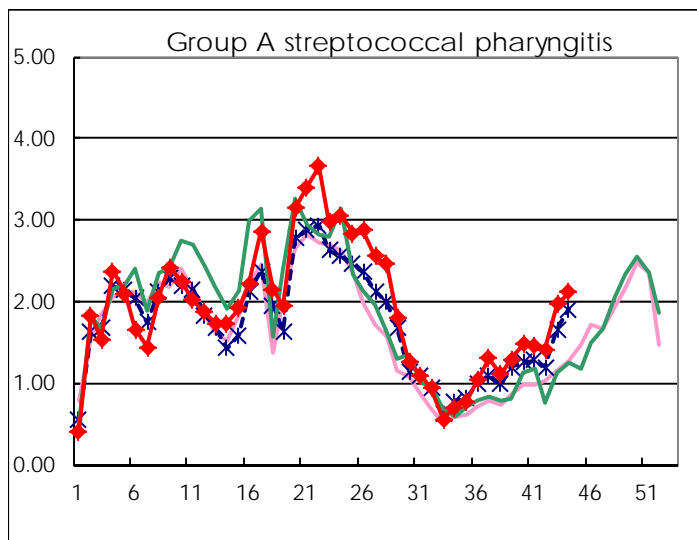
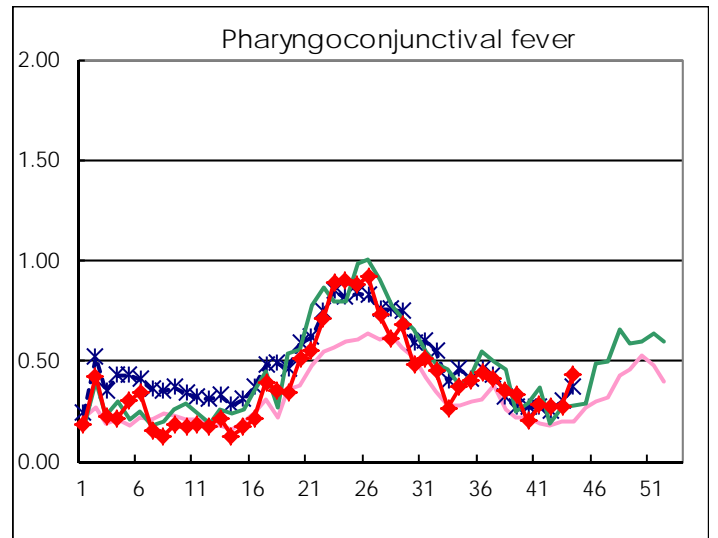
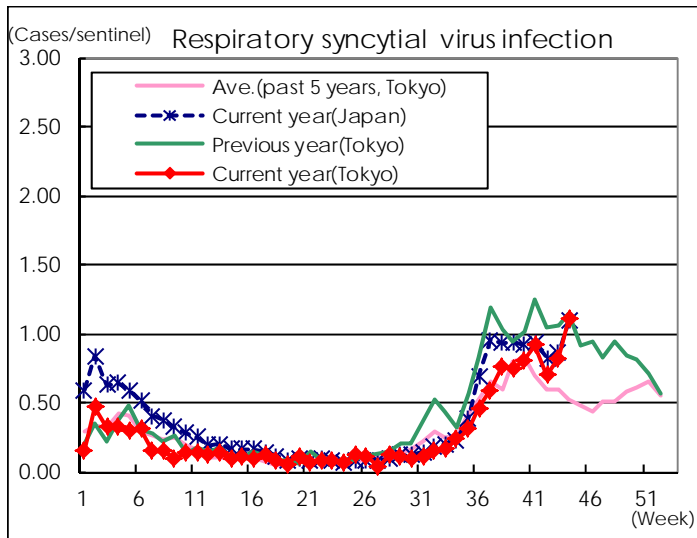
※ Designated infectious disease

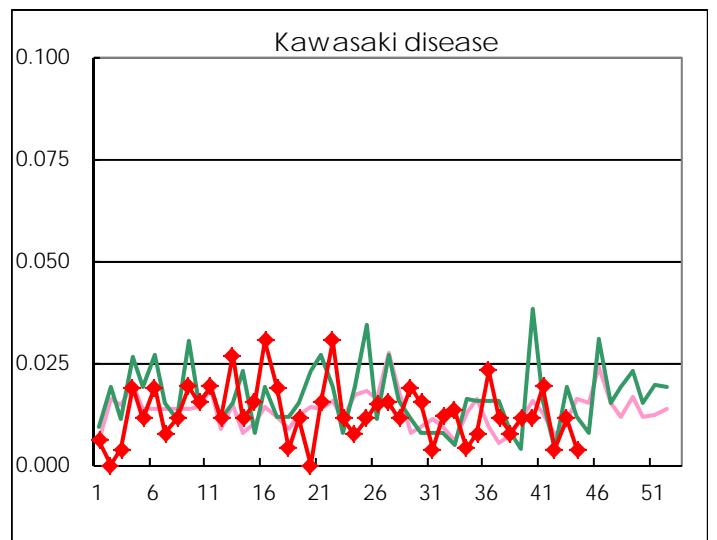
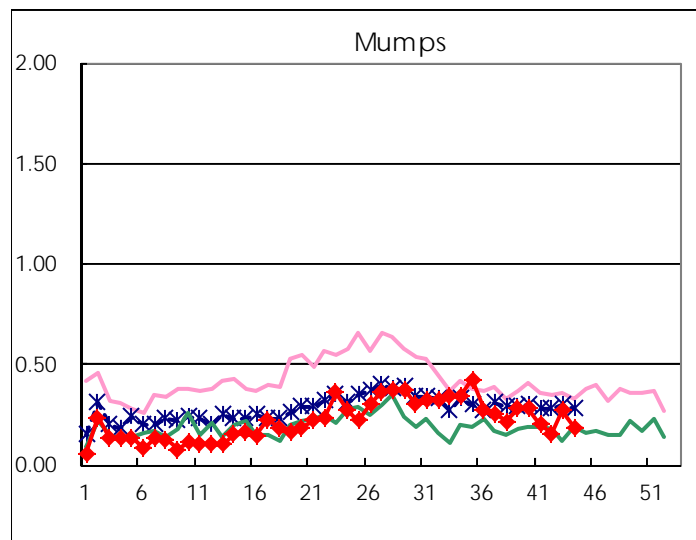
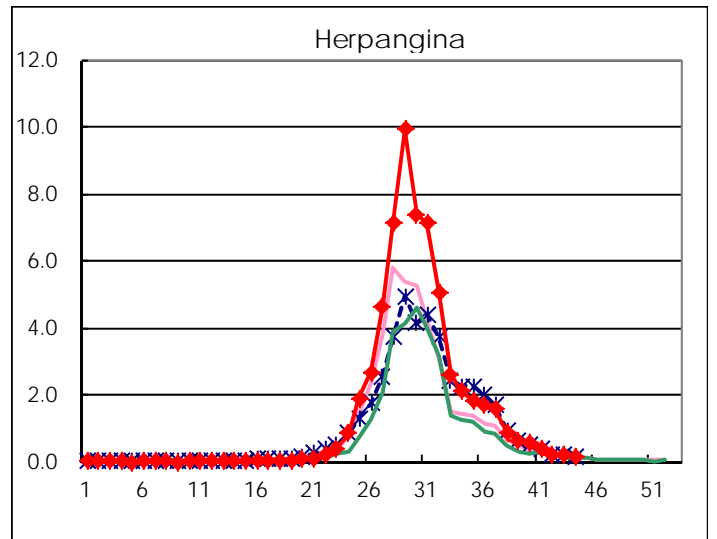
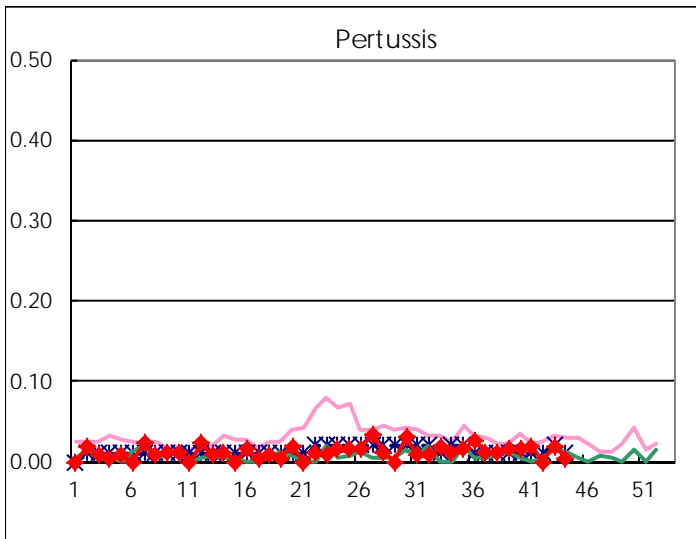
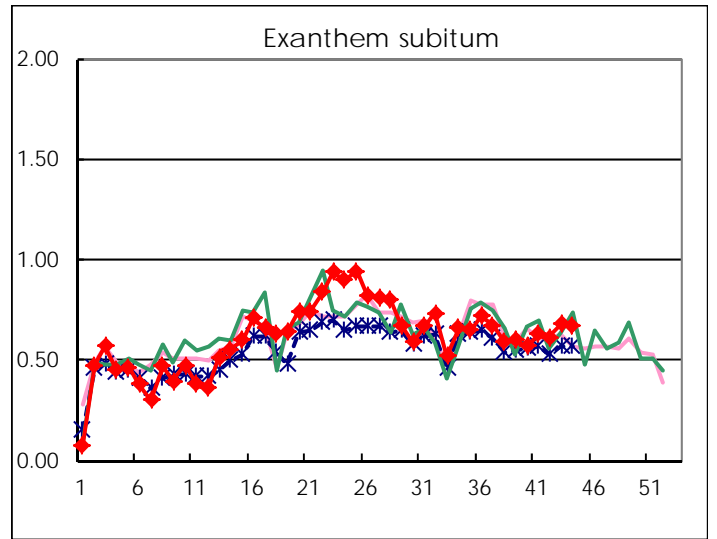
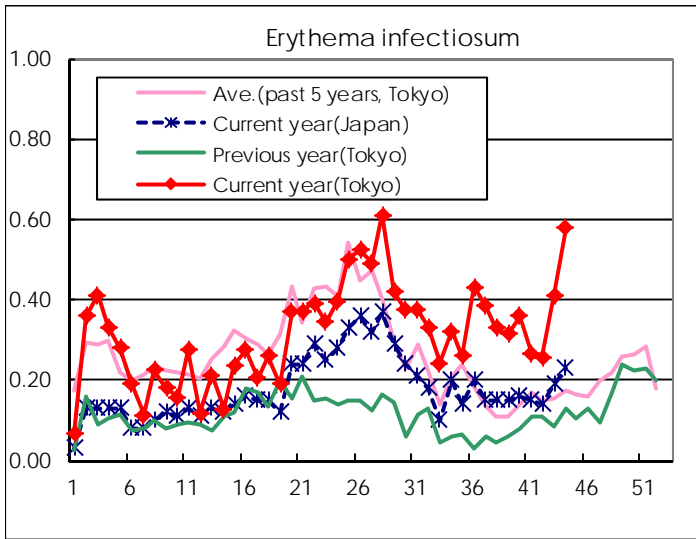
Number of patients with the diseases to be reported  
by the designated clinics and hospitals

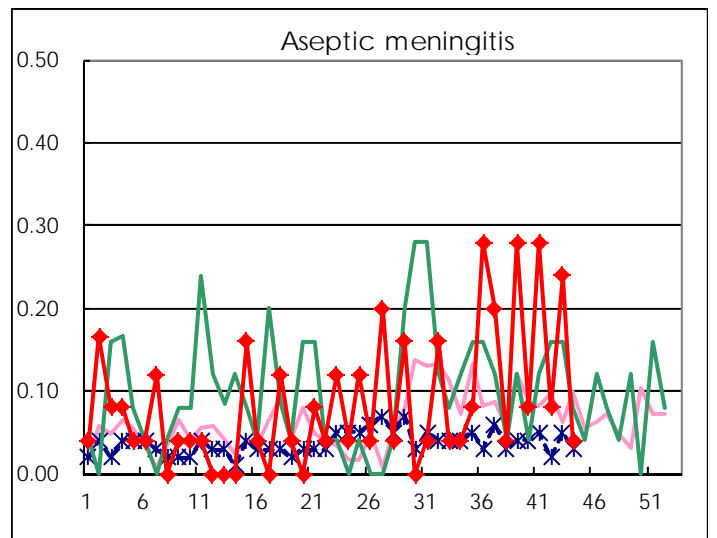
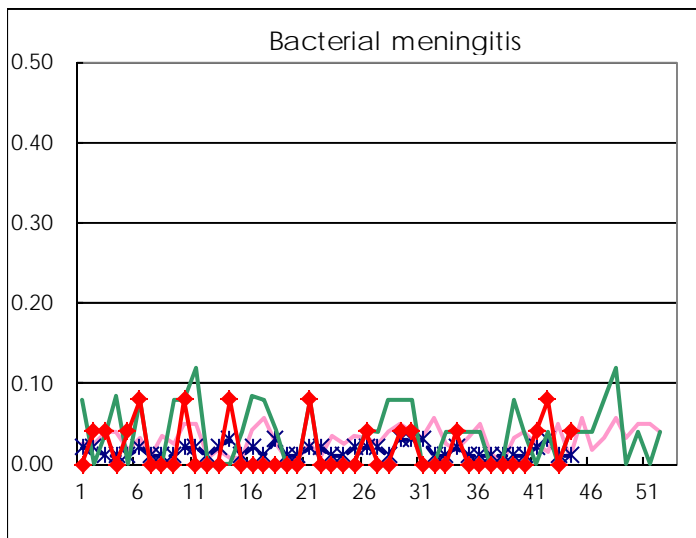
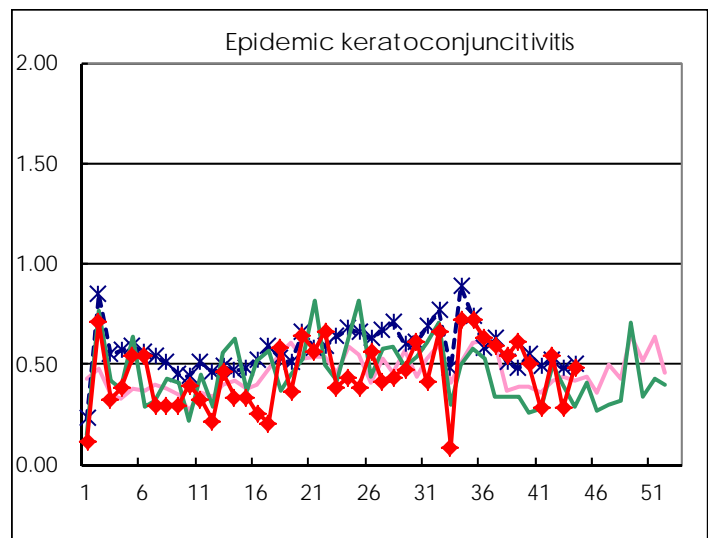
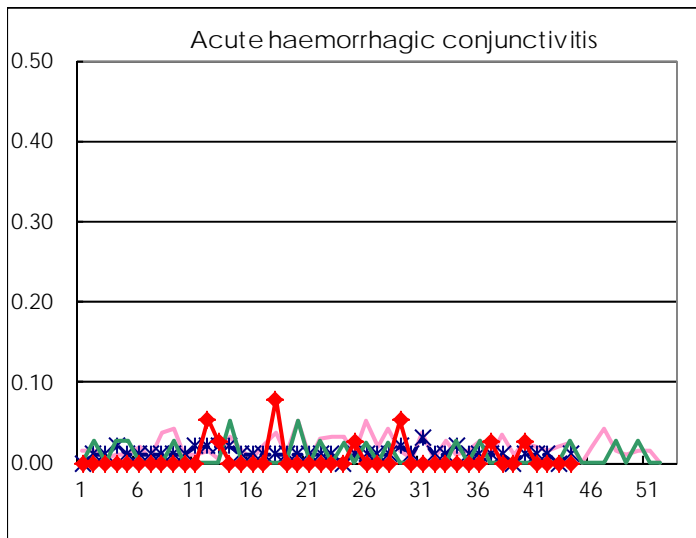
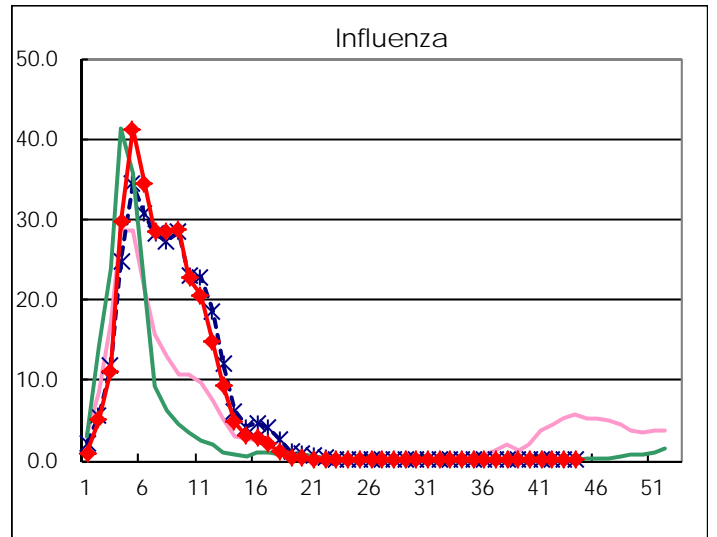
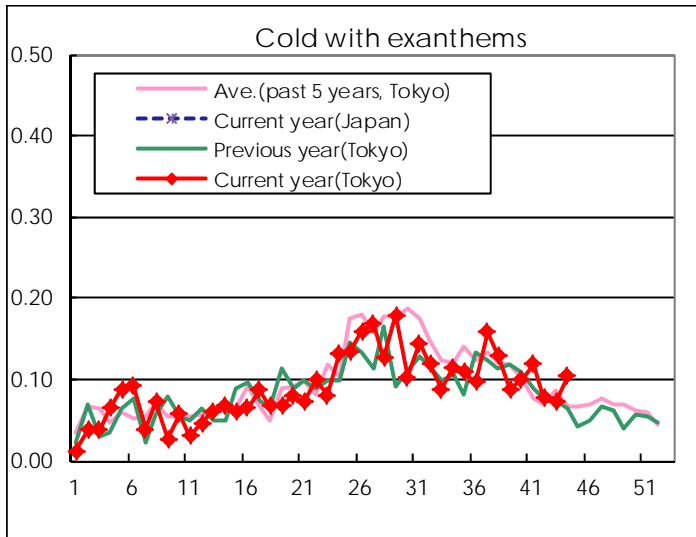
Diseases	Tokyo				
	41st	42nd	43rd	44th	/sentinel
Respiratory syncytial virus infection	238	182	218	286	1.11
Pharyngoconjunctival fever	73	72	73	112	0.43
Group A streptococcal pharyngitis	382	369	519	545	2.11
Infectious gastroenteritis	856	849	1,074	1,255	4.86
Chickenpox	114	120	164	172	0.67
Hand, foot, and mouth disease	223	153	138	173	0.67
Erythema infectiosum	69	67	109	149	0.58
Exanthem subitum	163	160	179	174	0.67
Pertussis	5		5	1	0.00
Herpangina	97	62	58	44	0.17
Mumps	53	41	72	48	0.19
Kawasaki disease	5	1	3	1	0.00
Cold with exanthems	31	20	19	27	0.10
Influenza	26	30	32	93	0.23
Acute hemorrhagic conjunctivitis					
Epidemic keratoconjunctivitis	11	21	11	19	0.49
Bacterial meningitis	1	2		1	0.04
Aseptic meningitis	7	2	6	1	0.04
Mycoplasma pneumonia	8	11	4	6	0.24
Chlamydial pneumonia (excluding psittacosis)					
Infectious gastroenteritis (only by Rotavirus)				1	0.04
Influenza-Associated Hospitalizations					

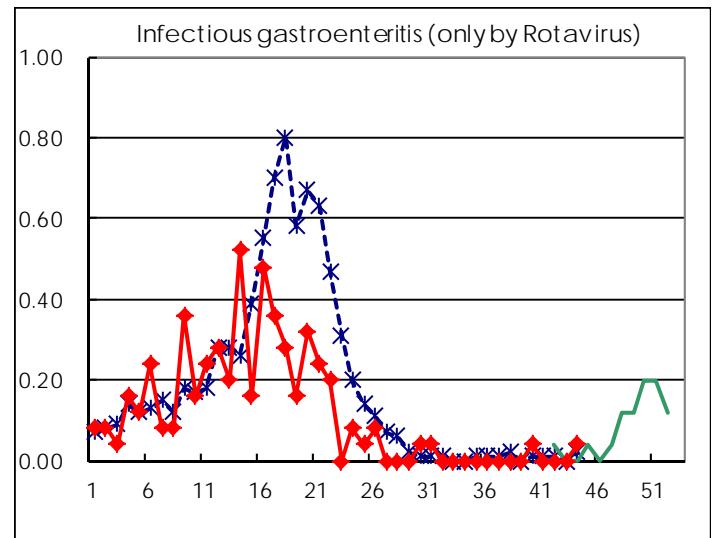
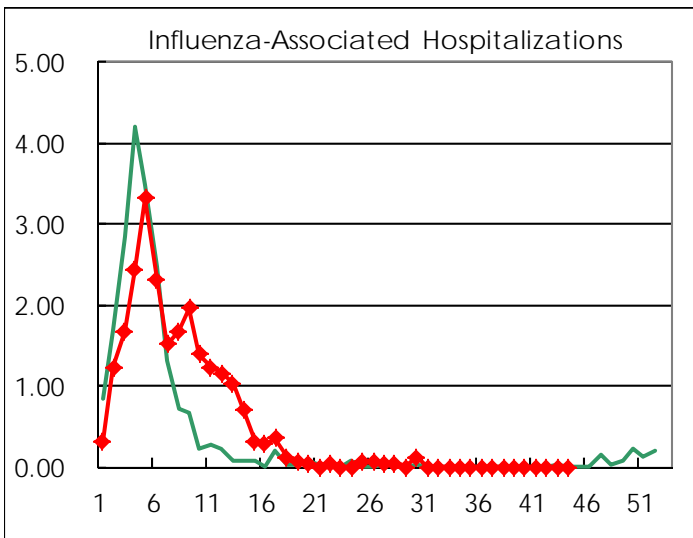
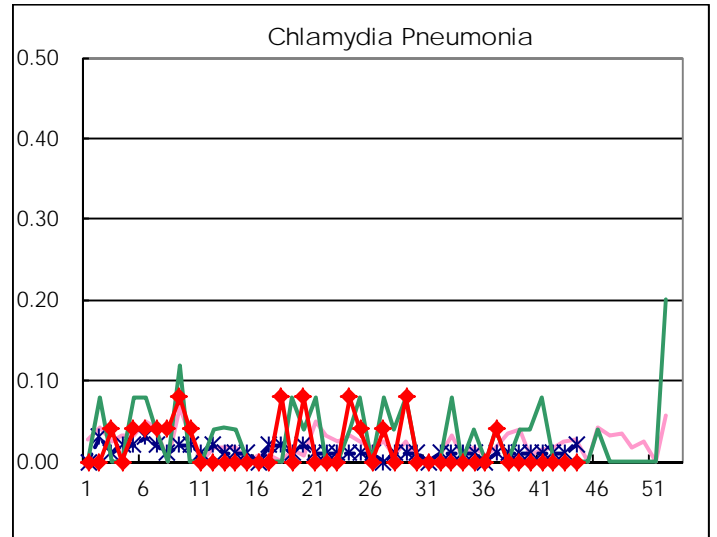
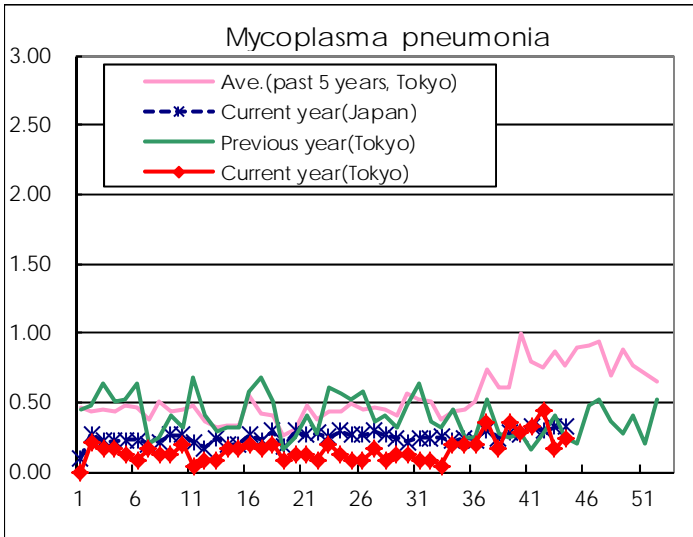
( Blank means 0. )

# Disease Trend Graph (weekly reported cases per sentinel in comparison)









Number of sentinel facilities for weekly reporting		
Types of sentinels	Number of sentinels	Sentinels having reported
Pediatric	264	258
Influenza	419	406
Ophthalmic	39	39
Specially-designated	25	25

Tokyo Metropolitan Government  
**Infectious Disease Surveillance Center**