
INFECTIOUS DISEASES WEEKLY REPORT

TOKYO IDWR

Tokyo Metropolitan Infectious Disease Surveillance Center

13 November 2014 / Number 45

Surveillance System in Tokyo, Japan

The infectious diseases which all physicians must report

All physicians must report to health centers the incidence of the diseases which are shown at page one. Health centers electronically report the individual cases to Tokyo Metropolitan Infectious Disease Surveillance Center.

The infectious diseases required to be reported by the sentinels

The numbers of patients who visit the sentinel clinics or hospitals during a week are reported to health centers in Tokyo. And they electronically report the numbers to Tokyo Metropolitan Infectious Disease Surveillance Center. We have about 500 sentinel clinics and hospitals in Tokyo.

1st Week is early January and 52nd Week is end of December.

Tokyo Metropolitan Institute of Public Health

TEL:81-3-3363-3213 FAX:81-3-5332-7365

e-mail:idsc@tokyo-eiken.go.jp

URL:idsc.tokyo-eiken.go.jp/

Number of patients with the diseases which all physicians must report

Category	Diseases	Tokyo					Japan	
		42nd	43rd	44th	45th	Cum 2014	45th	Cum 2014
I	Ebola hemorrhagic fever							
	Crimean-Congo hemorrhagic fever							
	Smallpox							
	South American hemorrhagic fever							
	Plague							
	Marburg disease							
	Lassa fever							
II	Acute poliomyelitis							
	Tuberculosis	55	71	77	59	3,429	325	22,328
	Diphtheria							
	Severe Acute Respiratory Syndrome(SARS)							
	Avian influenza H5N1							
※	Middle East Respiratory Syndrome (MERS)							
	Avian influenza H7N9							
III	Cholera					3		4
	Shigellosis			3	1	34	3	127
	Enterohemorrhagic Escherichia coli infection	5	5	5	3	339	38	3,846
	Typhoid fever		1			26		51
	Paratyphoid fever					7		15
IV	Hepatitis E			1		23		122
	West Nile fever							
	Hepatitis A			2		33	1	418
	Echinococcosis							15
	Yellow fever							
	Psittacosis					3		8
	Omsk hemorrhagic fever							
	Relapsing fever							1
	Kyasanur forest disease							
	Q fever							1
	Rabies							
	Coccidioidomycosis							1
	Monkeypox							
	Severe Fever with Thrombocytopenia Syndrome							57
	Hemorrhagic fever with renal syndrome							
	Western equine encephalitis							
	Tick-borne encephalitis							
	Anthrax							
	Chikungunya fever		1		1	4	1	12
	Scrub typhus(Tsutsugamushi disease)			2	3	11	6	148
	Dengue fever	1	2	1		160	2	322
	Eastern equine encephalitis							
	Avian influenza (excluding H5N1 and H7N9)							
	Nipah virus infection							
	Japanese spotted fever						2	217
	Japanese encephalitis							2
	Hantavirus pulmonary syndrome							
	Herpes B virus infection							
	Glanders							
	Brucellosis					4		10
	Venezuelan equine encephalitis							
	Hendra virus infection							
	Epidemic typhus							
Botulism							1	
Malaria				1	25	2	55	
Tularemia							1	
Lyme disease		1			2		14	
Lyssavirus infection(excluding rabies)								
Rift valley fever								
Melioidosis								
Legionellosis	5	3	2		93	15	1,054	
Leptospirosis			1	1	5	1	44	
Rocky mountain spotted fever								

Category	Diseases	Tokyo					Japan	
		42nd	43rd	44th	45th	Cum 2014	45th	Cum 2014
V	Amebiasis	7	10	3	3	198	10	959
	Viral hepatitis(excluding hepatitis A and E)					41		202
	CRE infection		4	4	4	26	11	140
	Acute encephalitis(excluding JE and WNE)	1		2		42	3	389
	Cryptosporidiosis					81	1	97
	Creutzfeldt-Jakob disease			1		13		148
	Severe invasive streptococcal infections(TSLS)					39	4	227
	Acquired immunodeficiency syndrome (AIDS)	9	8	11	3	438	11	1,292
	Giardiasis					13		56
	Invasive <i>Haemophilus influenzae</i> disease		1		1	21	1	170
	Invasive meningococcal disease				1	7	1	29
	Invasive pneumococcal disease	4	10	5	2	192	19	1,443
	Varicella (limited to hospitalized case)		1			6	2	68
	Congenital rubella syndrome					3		9
	Syphilis	13	10	11	7	433	13	1,405
	Disseminated cryptococcosis	1				2	1	11
	Tetanus					10	1	117
	Vancomycin-resistant <i>S. aureus</i> infection							
	Vancomycin-resistant Enterococcus infection					3		43
	Rubella	4	1	1	1	95	2	306
Measles			1		91	1	456	
MDRA infection	1				2		9	

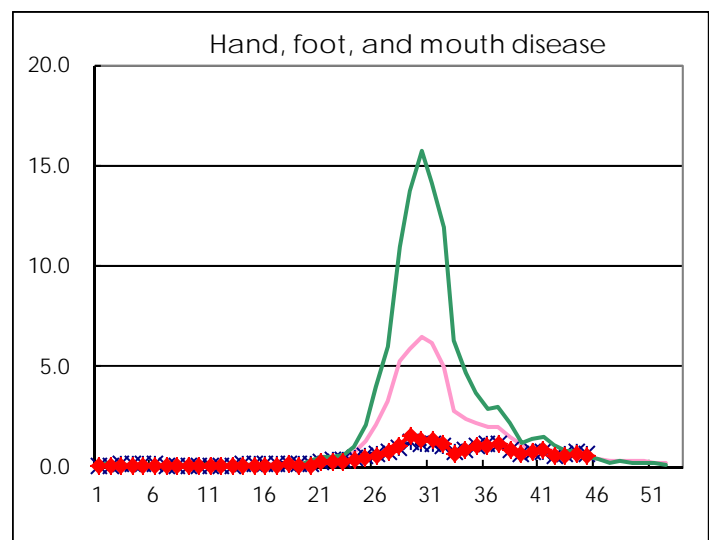
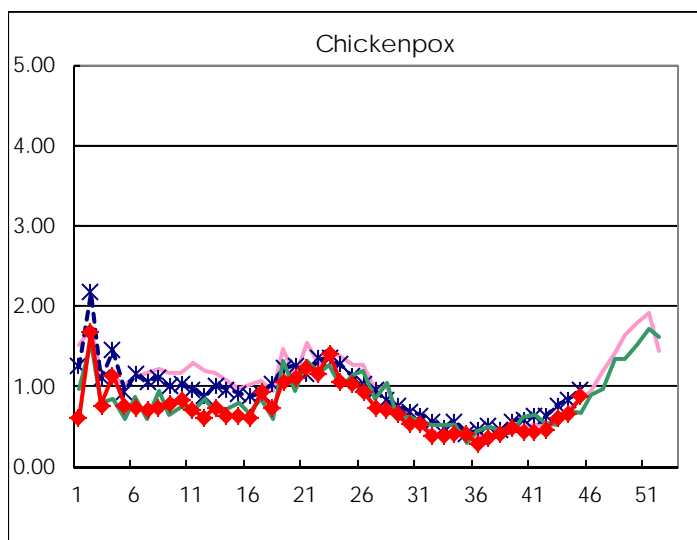
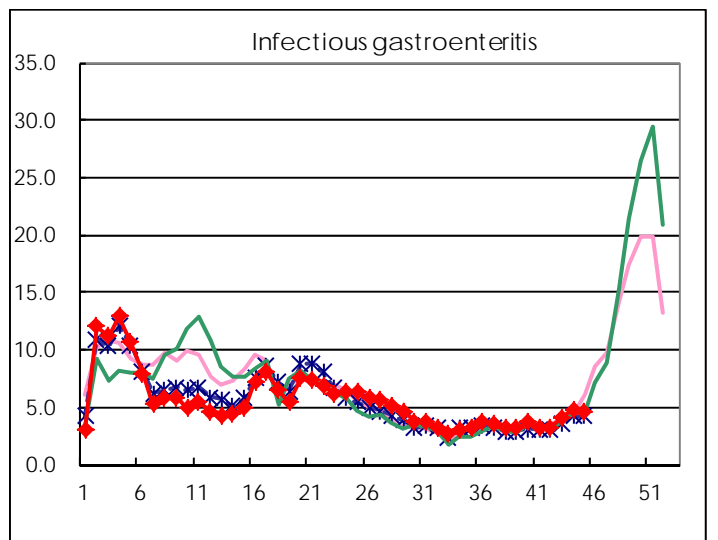
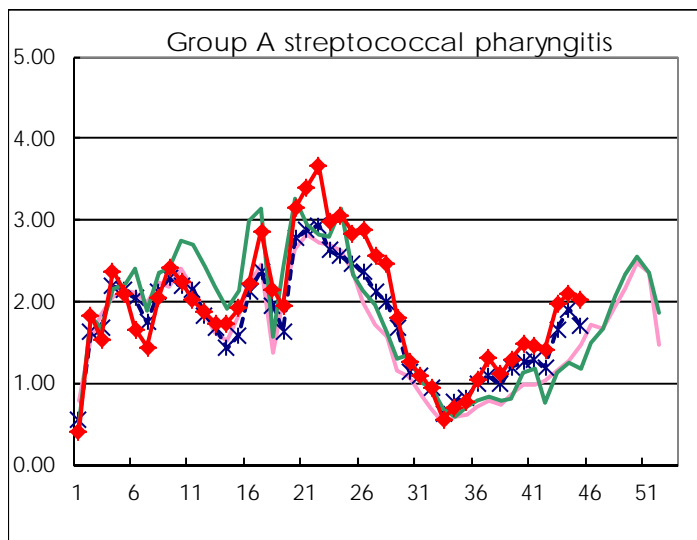
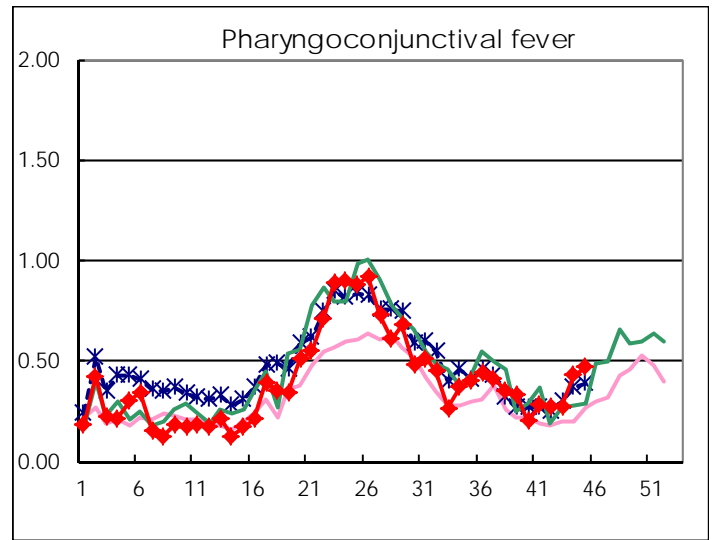
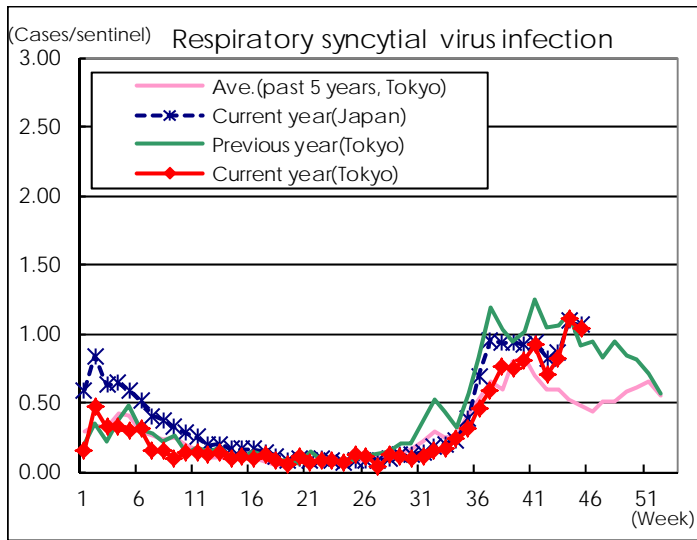
※ Designated infectious disease

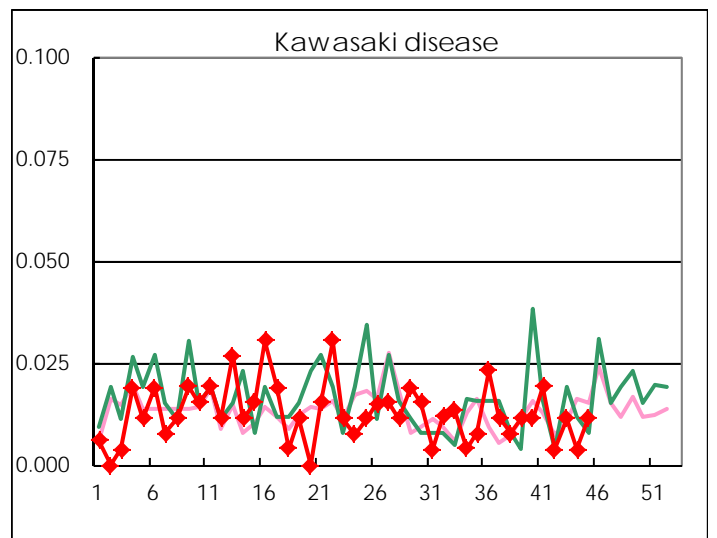
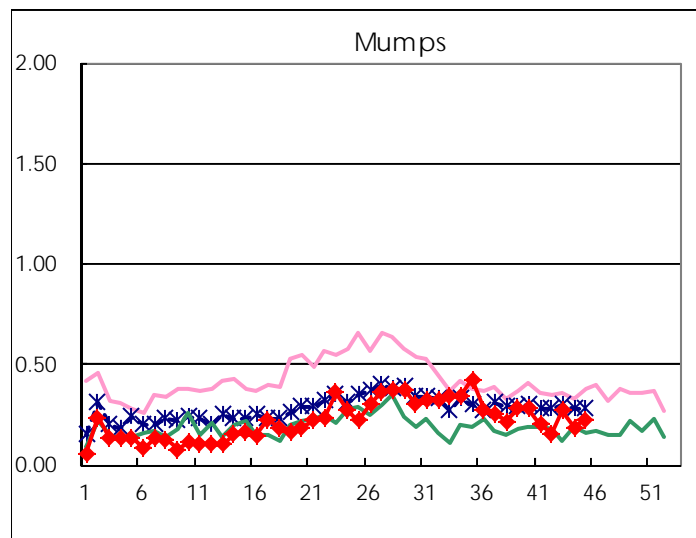
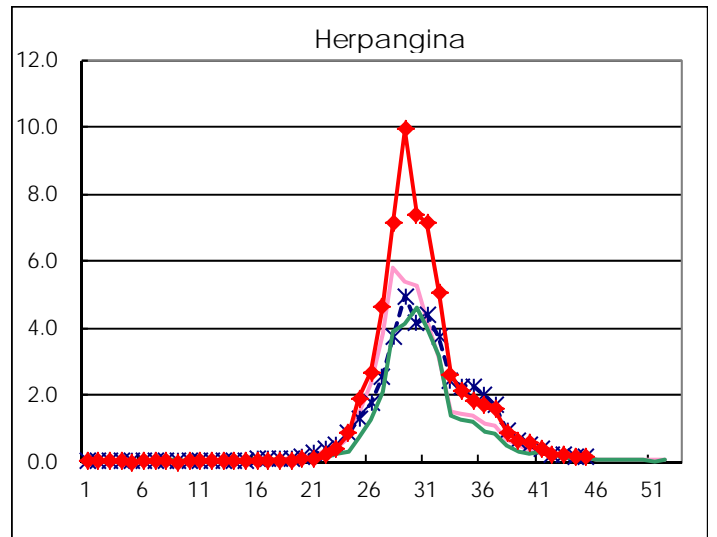
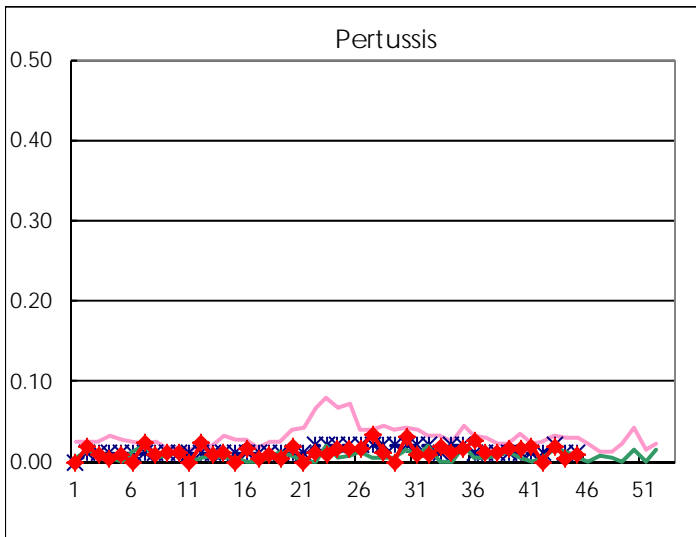
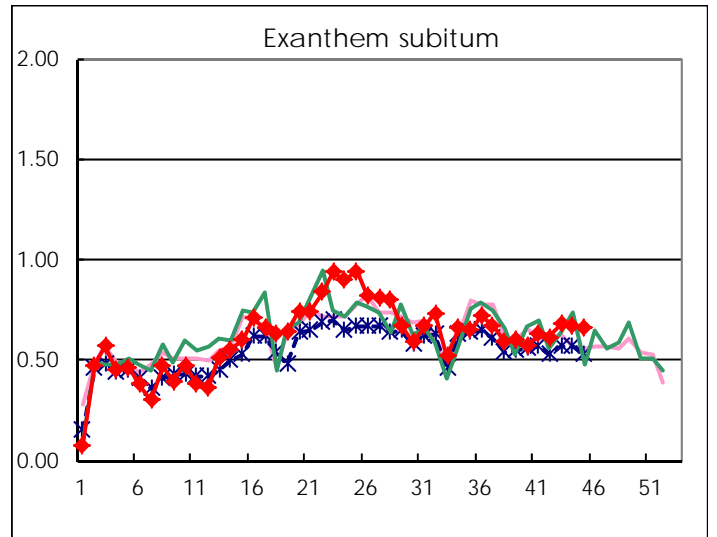
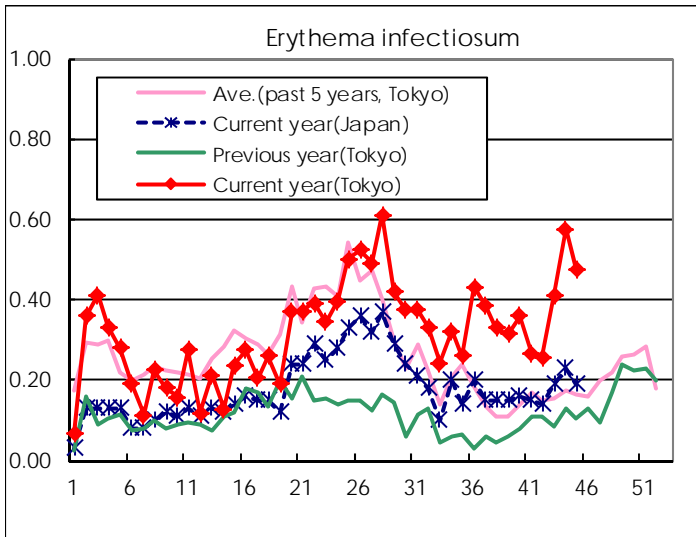
Number of patients with the diseases to be reported
by the designated clinics and hospitals

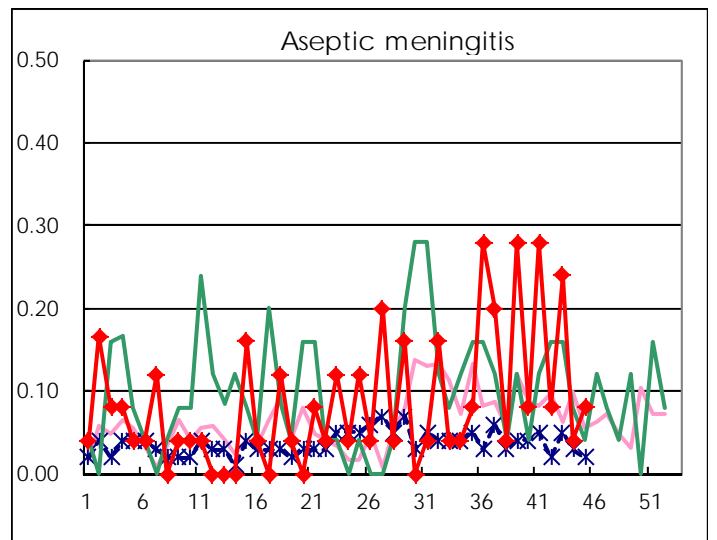
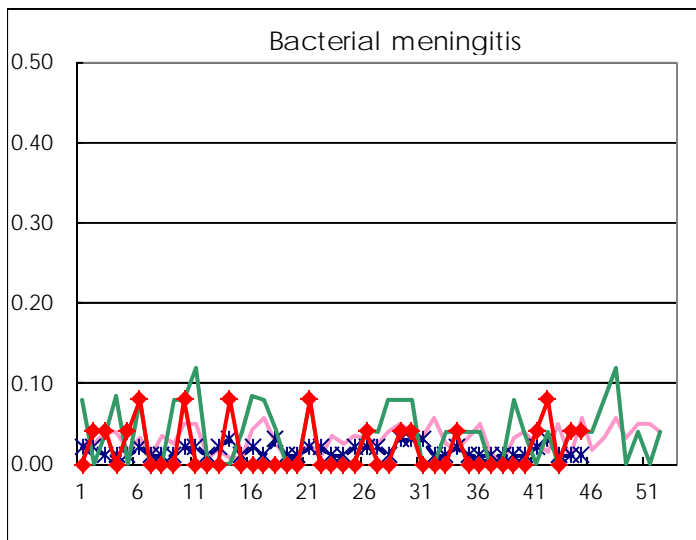
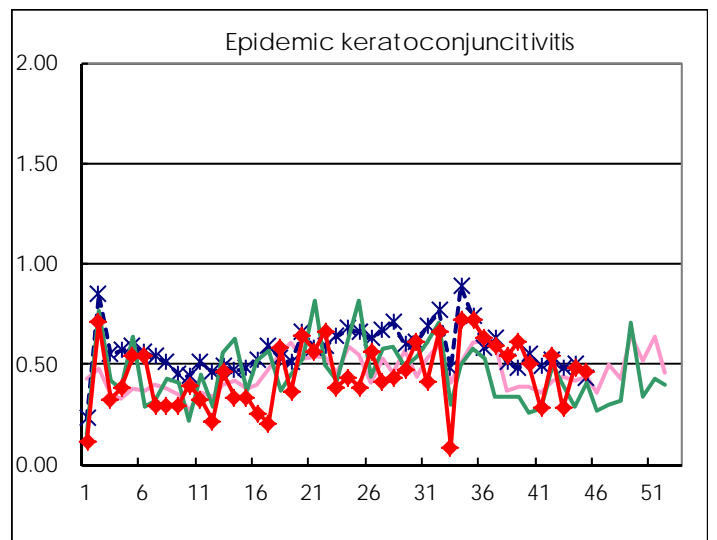
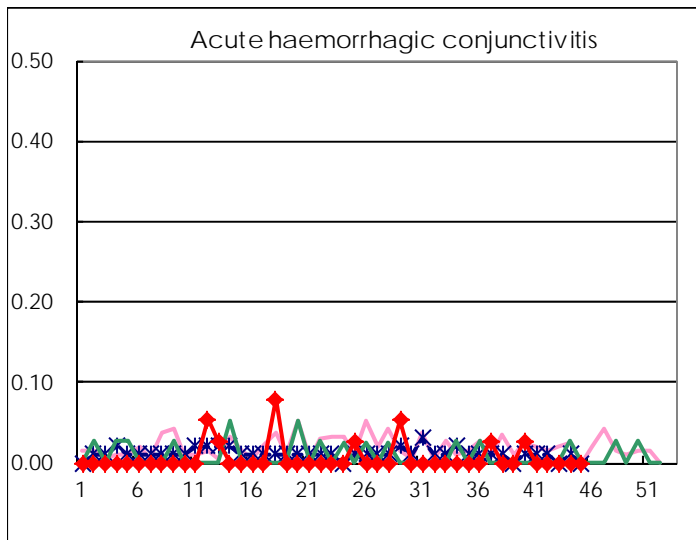
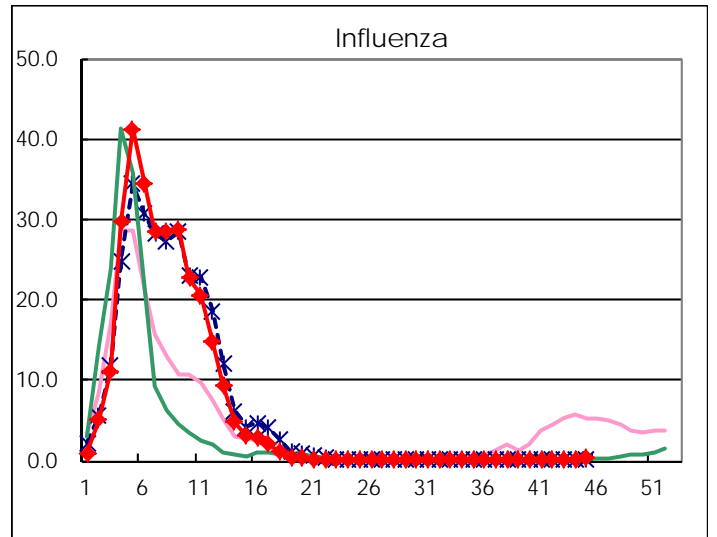
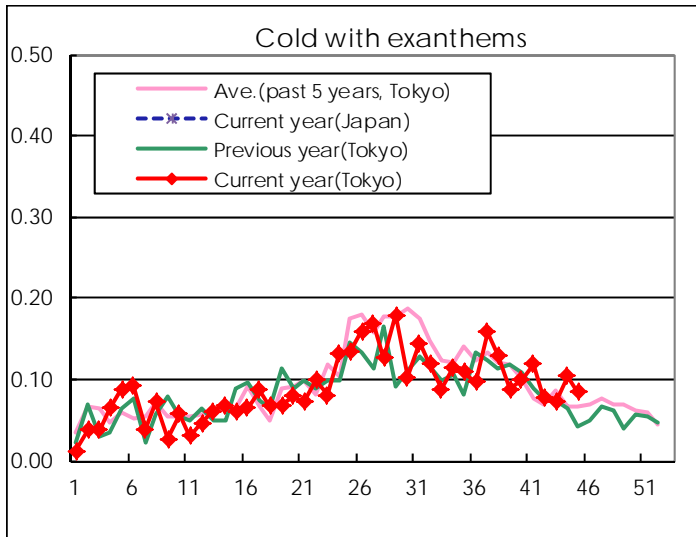
Diseases	Tokyo				
	42nd	43rd	44th	45th	/sentinel
Respiratory syncytial virus infection	182	218	286	268	1.03
Pharyngoconjunctival fever	72	73	112	122	0.47
Group A streptococcal pharyngitis	369	519	545	524	2.02
Infectious gastroenteritis	849	1,074	1,255	1,194	4.59
Chickenpox	120	164	173	227	0.87
Hand, foot, and mouth disease	153	138	175	155	0.60
Erythema infectiosum	67	109	149	124	0.48
Exanthem subitum	160	179	174	171	0.66
Pertussis		5	1	2	0.01
Herpangina	62	58	44	43	0.17
Mumps	41	72	48	59	0.23
Kawasaki disease	1	3	1	3	0.01
Cold with exanthems	20	19	27	22	0.08
Influenza	30	32	93	161	0.39
Acute hemorrhagic conjunctivitis					
Epidemic keratoconjunctivitis	21	11	19	18	0.46
Bacterial meningitis	2		1	1	0.04
Aseptic meningitis	2	6	1	2	0.08
Mycoplasma pneumonia	11	4	6	6	0.24
Chlamydial pneumonia (excluding psittacosis)					
Infectious gastroenteritis (only by Rotavirus)			1		
Influenza-Associated Hospitalizations				2	0.08

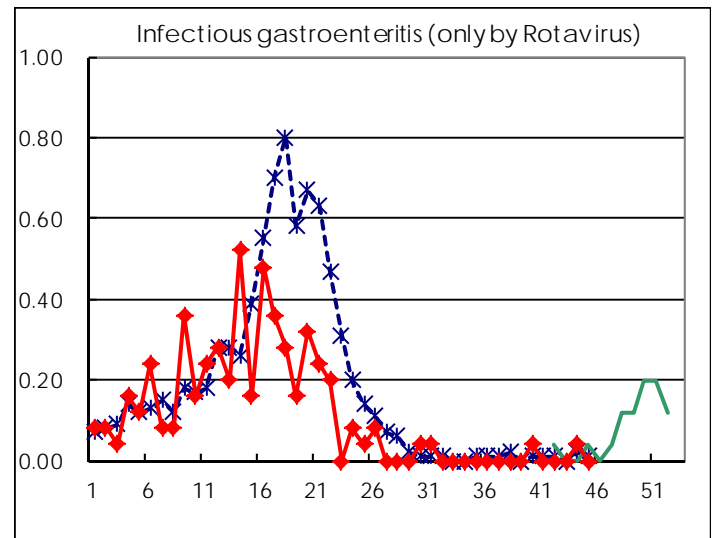
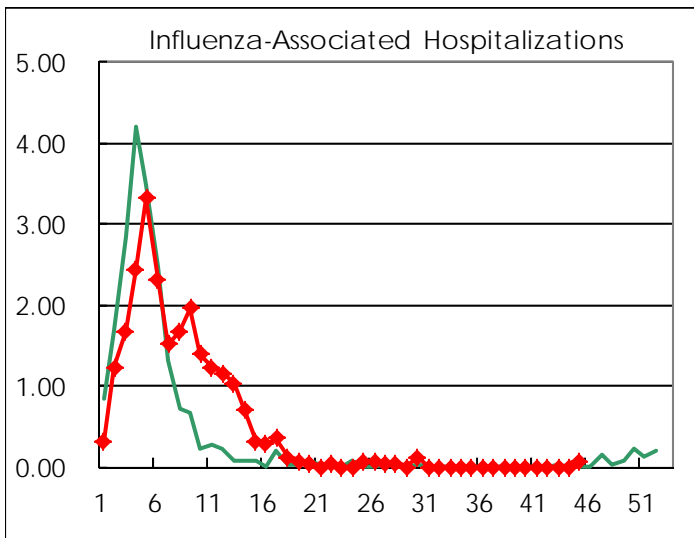
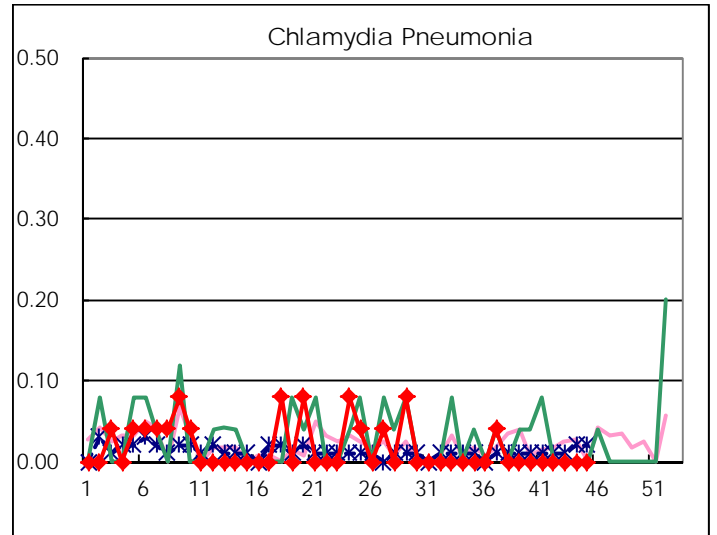
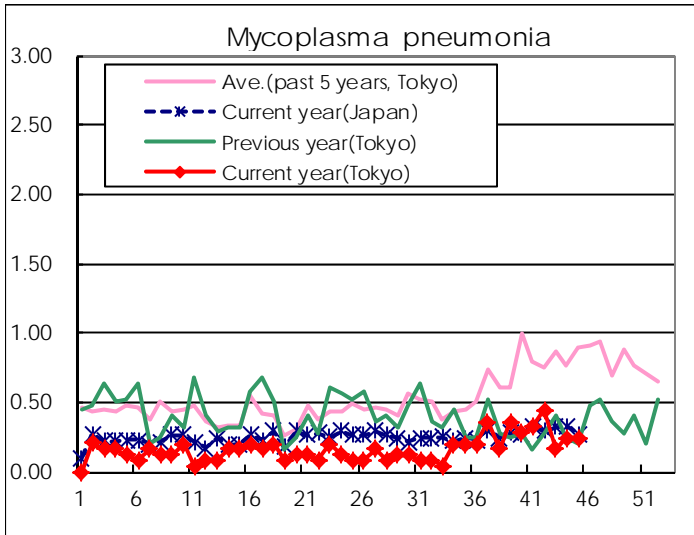
(Blank means 0.)

Disease Trend Graph (weekly reported cases per sentinel in comparison)









Number of sentinel facilities for weekly reporting		
Types of sentinels	Number of sentinels	Sentinels having reported
Pediatric	264	260
Influenza	419	411
Ophthalmic	39	39
Specially-designated	25	25

Tokyo Metropolitan Government
Infectious Disease Surveillance Center