
INFECTIOUS DISEASES WEEKLY REPORT

TOKYO iDWR

Tokyo Metropolitan Infectious Disease Surveillance Center

4 December 2014 / Number 48

Surveillance System in Tokyo, Japan

The infectious diseases which all physicians must report

All physicians must report to health centers the incidence of the diseases which are shown at page one. Health centers electronically report the individual cases to Tokyo Metropolitan Infectious Disease Surveillance Center.

The infectious diseases required to be reported by the sentinels

The numbers of patients who visit the sentinel clinics or hospitals during a week are reported to health centers in Tokyo. And they electronically report the numbers to Tokyo Metropolitan Infectious Disease Surveillance Center. We have about 500 sentinel clinics and hospitals in Tokyo.

1st Week is early January and 52nd Week is end of December.

Tokyo Metropolitan Institute of Public Health

TEL:81-3-3363-3213 FAX:81-3-5332-7365

e-mail:idsc@tokyo-eiken.go.jp

URL:idsc.tokyo-eiken.go.jp/

Number of patients with the diseases which all physicians must report

Category	Diseases	Tokyo					Japan	
		45th	46th	47th	48th	Cum 2014	48th	Cum 2014
I	Ebola hemorrhagic fever							
	Crimean-Congo hemorrhagic fever							
	Smallpox							
	South American hemorrhagic fever							
	Plague							
	Marburg disease							
	Lassa fever							
II	Acute poliomyelitis							
	Tuberculosis	67	92	70	54	3,662	268	23,732
	Diphtheria							
	Severe Acute Respiratory Syndrome(SARS)							
	Avian influenza H5N1							
※	Middle East Respiratory Syndrome (MERS)							
	Avian influenza H7N9							
III	Cholera					3		4
	Shigellosis	1	2		2	38	4	141
	Enterohemorrhagic Escherichia coli infection	3	3	7	3	352	22	3,973
	Typhoid fever		1			27		52
	Paratyphoid fever					7		15
IV	Hepatitis E					23		125
	West Nile fever							
	Hepatitis A				1	34	1	421
	Echinococcosis							18
	Yellow fever							
	Psittacosis					3		8
	Omsk hemorrhagic fever							
	Relapsing fever							1
	Kyasanur forest disease							
	Q fever							1
	Rabies							
	Coccidioidomycosis							1
	Monkeypox							
	Severe Fever with Thrombocytopenia Syndrome							58
	Hemorrhagic fever with renal syndrome							
	Western equine encephalitis							
	Tick-borne encephalitis							
	Anthrax							
	Chikungunya fever	1				4		12
	Scrub typhus(Tsutsugamushi disease)		1	1	4	17	15	224
	Dengue fever		1			161	2	328
	Eastern equine encephalitis							
	Avian influenza (excluding H5N1 and H7N9)							
	Nipah virus infection							
	Japanese spotted fever							231
	Japanese encephalitis							2
	Hantavirus pulmonary syndrome							
	Herpes B virus infection							
	Glanders							
	Brucellosis					4		10
	Venezuelan equine encephalitis							
	Hendra virus infection							
	Epidemic typhus							
	Botulism							1
	Malaria	1	1	1		27		57
	Tularemia							1
Lyme disease					2		16	
Lyssavirus infection(excluding rabies)								
Rift valley fever								
Melioidosis								
Legionellosis	1	5	1	1	101	19	1,121	
Leptospirosis	1				5		46	
Rocky mountain spotted fever								

Category	Diseases	Tokyo					Japan	
		45th	46th	47th	48th	Cum 2014	48th	Cum 2014
V	Amebiasis	3	3	2	5	208	10	1,014
	Viral hepatitis(excluding hepatitis A and E)			1	1	43	1	208
	CRE infection	4	8	3		37	13	213
	Acute encephalitis(excluding JE and WNE)		2		2	46	4	406
	Cryptosporidiosis				1	82	1	98
	Creutzfeldt-Jakob disease		1	1		15		158
	Severe invasive streptococcal infections(TSLs)			1		40	9	251
	Acquired immunodeficiency syndrome (AIDS)	4	10	12	8	469	12	1,388
	Giardiasis					13	1	59
	Invasive <i>Haemophilus influenzae</i> disease	1				21	1	178
	Invasive meningococcal disease	1			1	9	2	33
	Invasive pneumococcal disease	3	2	4	4	203	25	1,561
	Varicella (limited to hospitalized case)			1	2	9	5	97
	Congenital rubella syndrome					3		9
	Syphilis	7	7	10	4	453	15	1,502
	Disseminated cryptococcosis					2		17
	Tetanus					10		120
	Vancomycin-resistant <i>S. aureus</i> infection							
	Vancomycin-resistant Enterococcus infection				1	4	1	47
Rubella	1				95	2	314	
Measles					91	1	459	
MDRA infection					2		12	

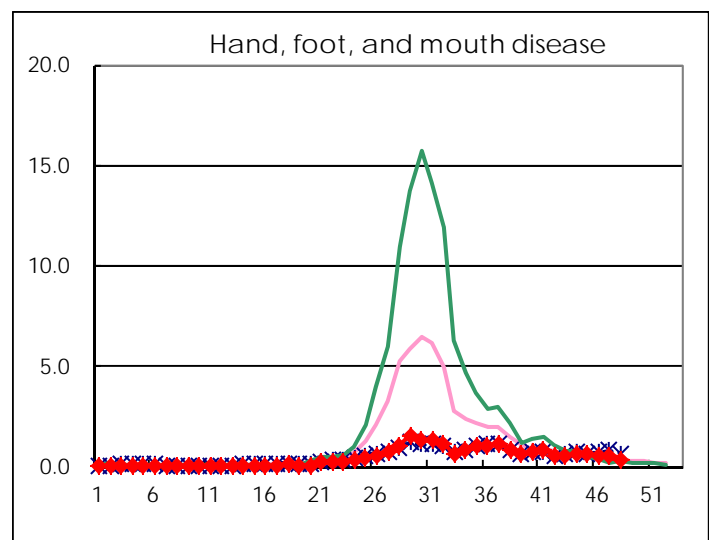
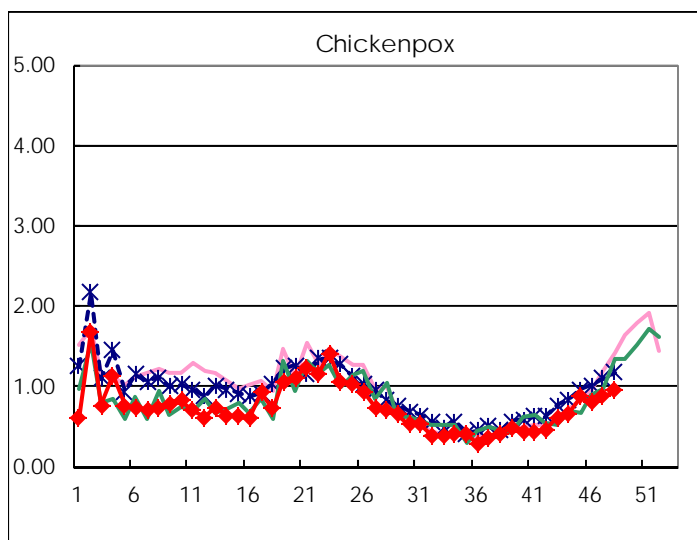
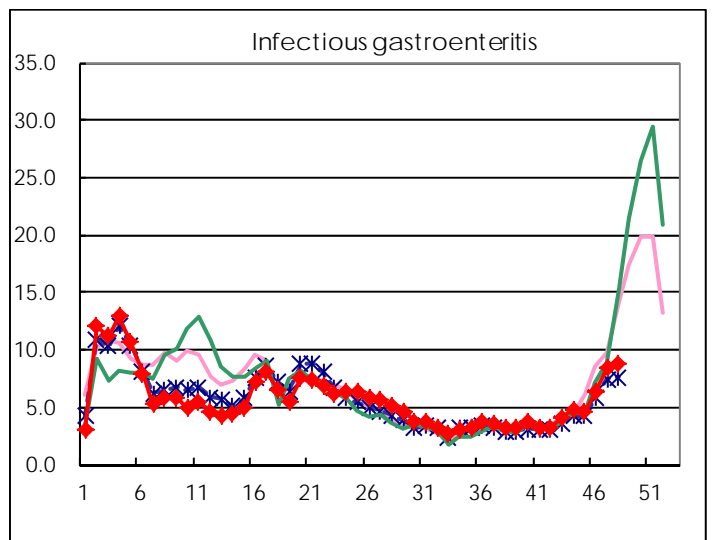
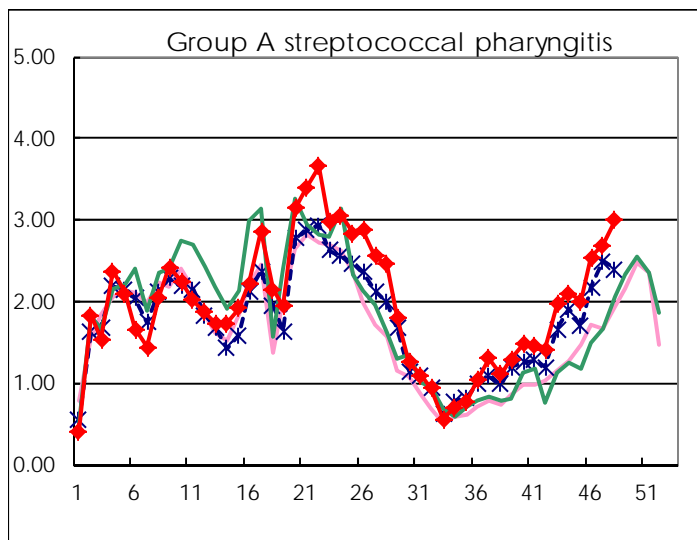
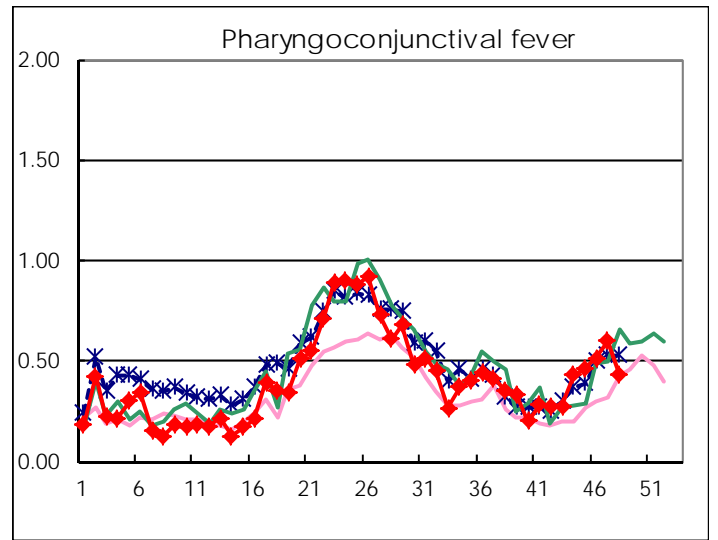
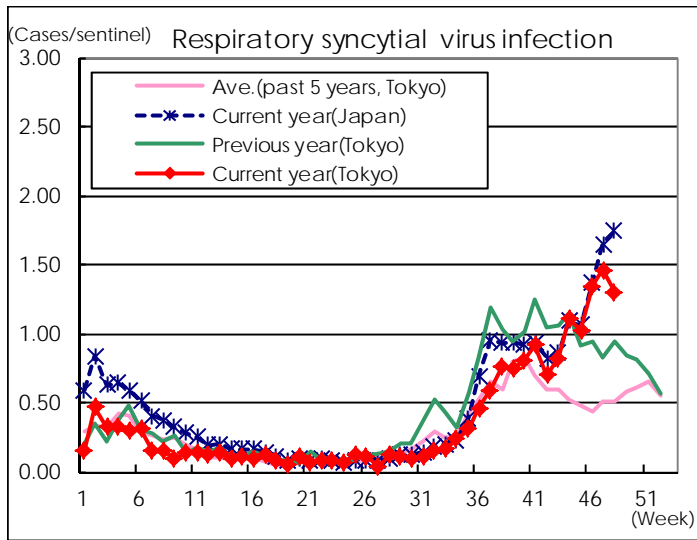
※ Designated infectious disease

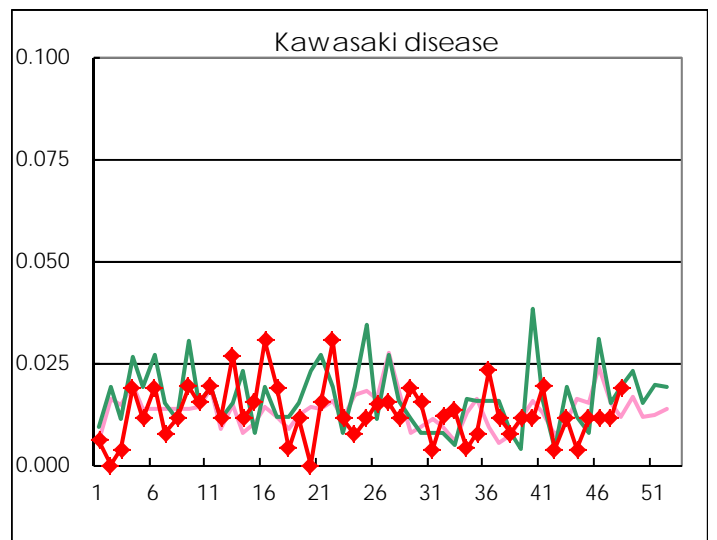
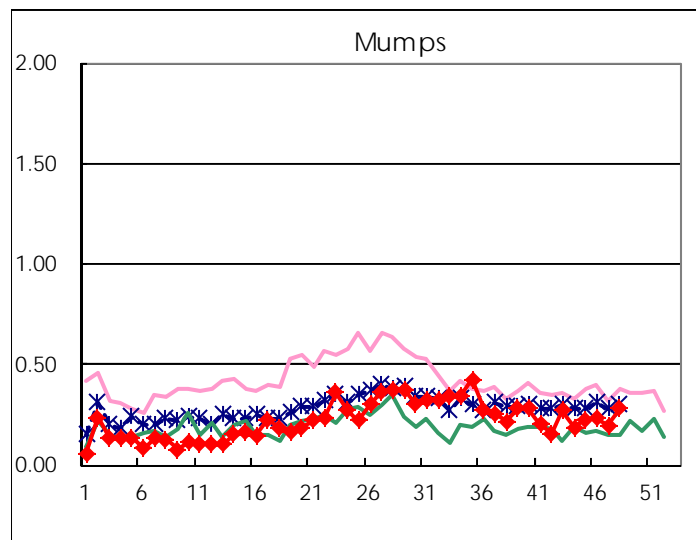
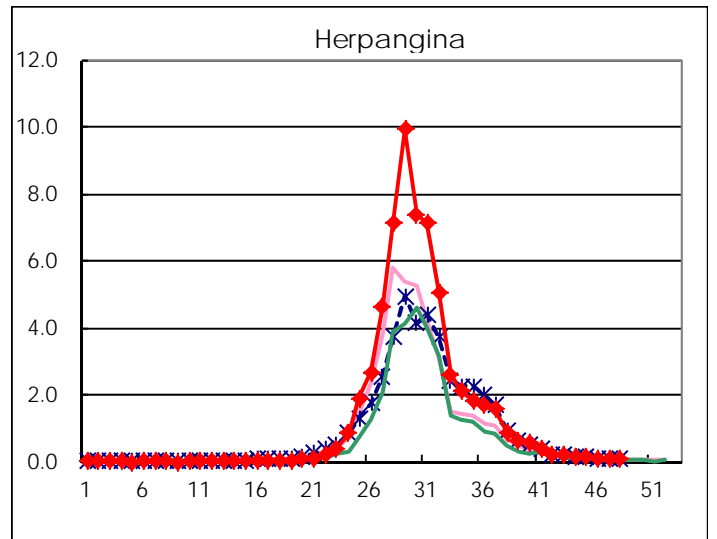
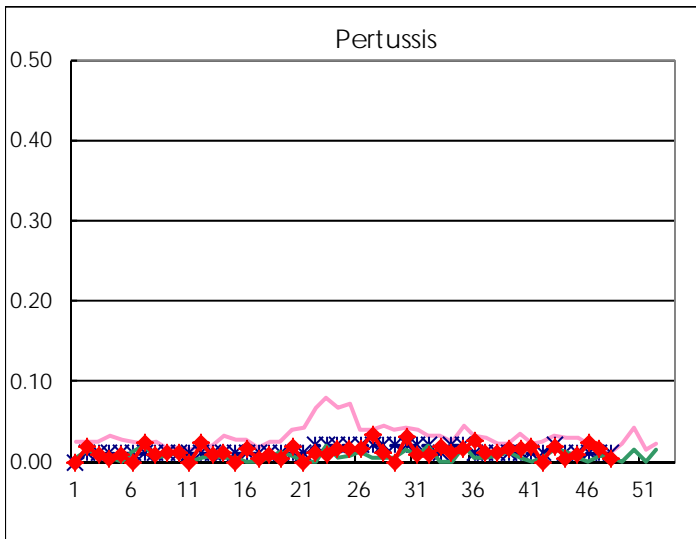
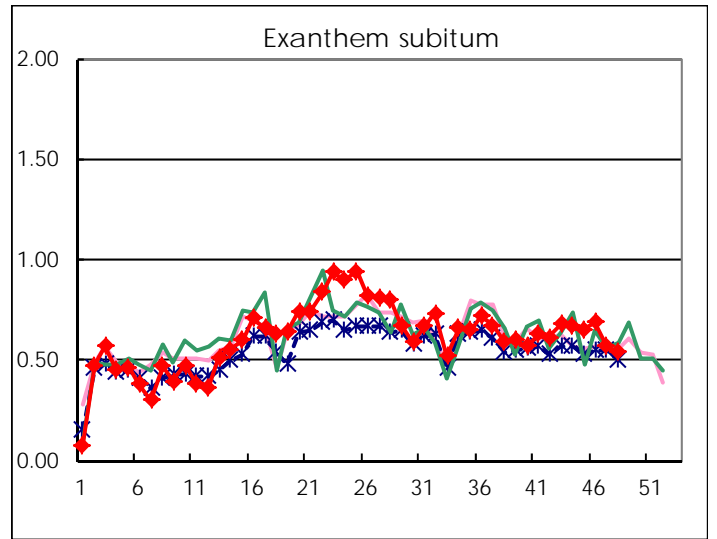
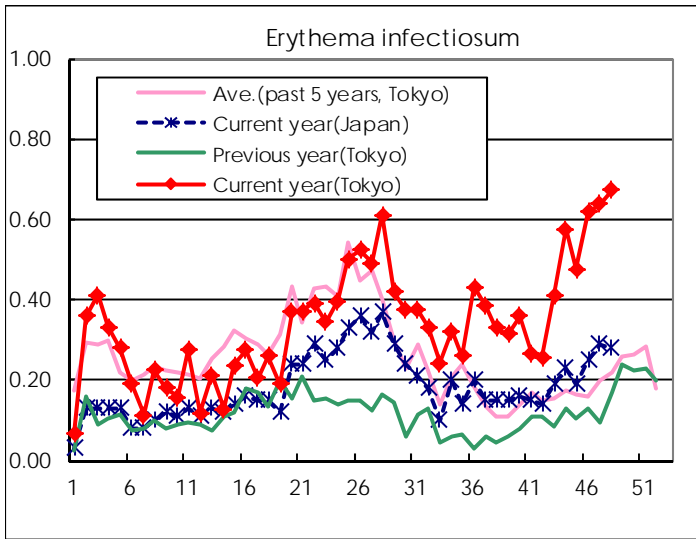
Number of patients with the diseases to be reported
by the designated clinics and hospitals

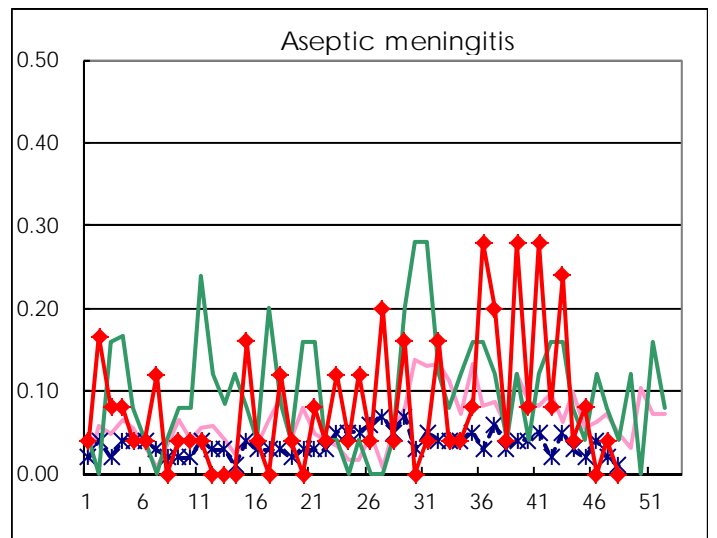
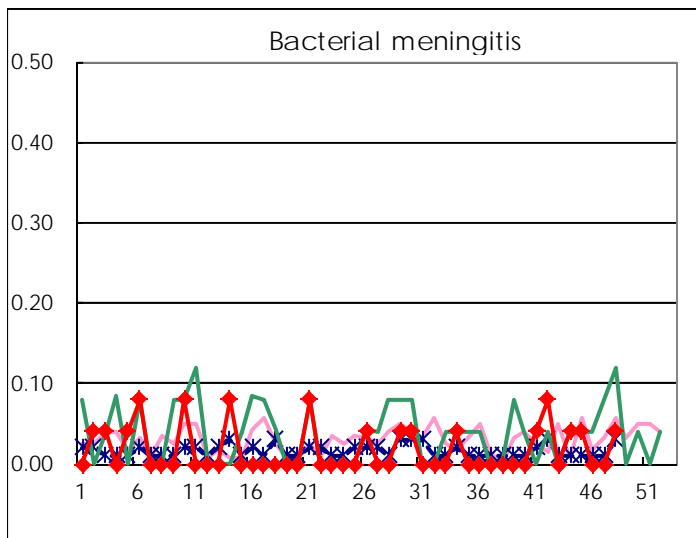
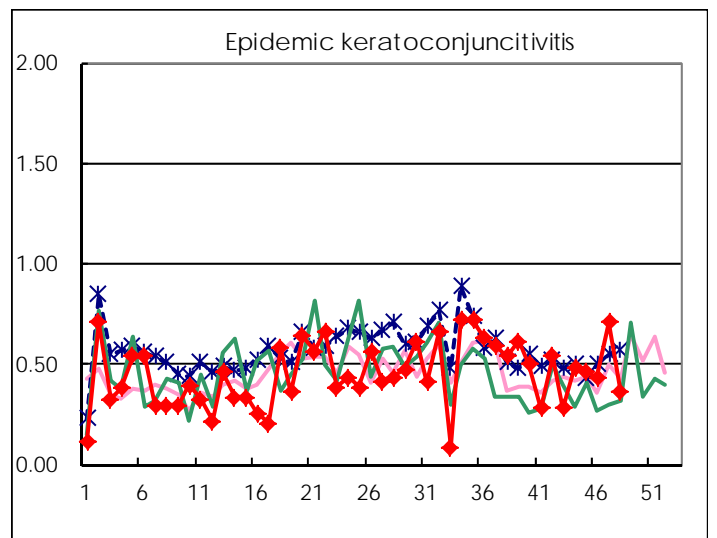
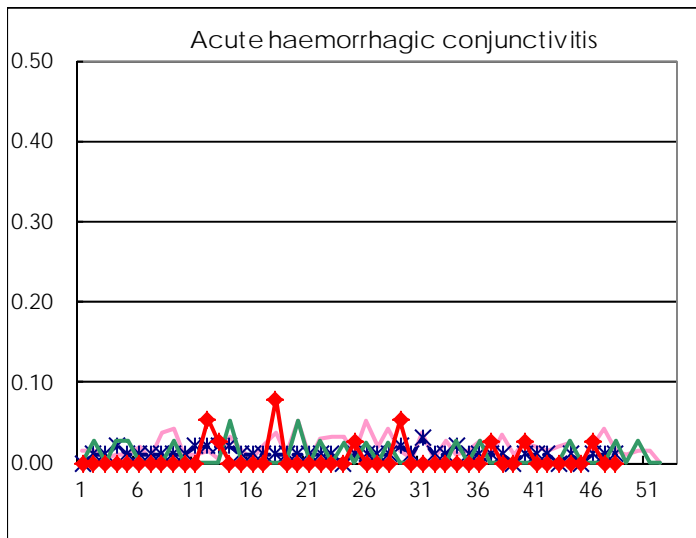
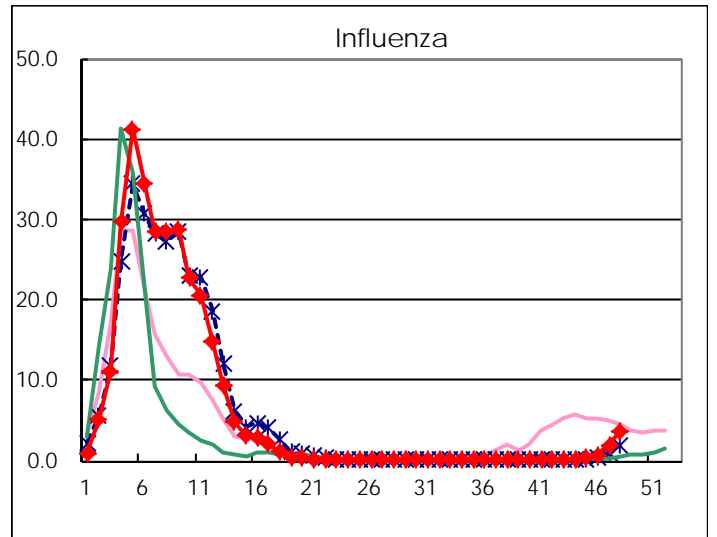
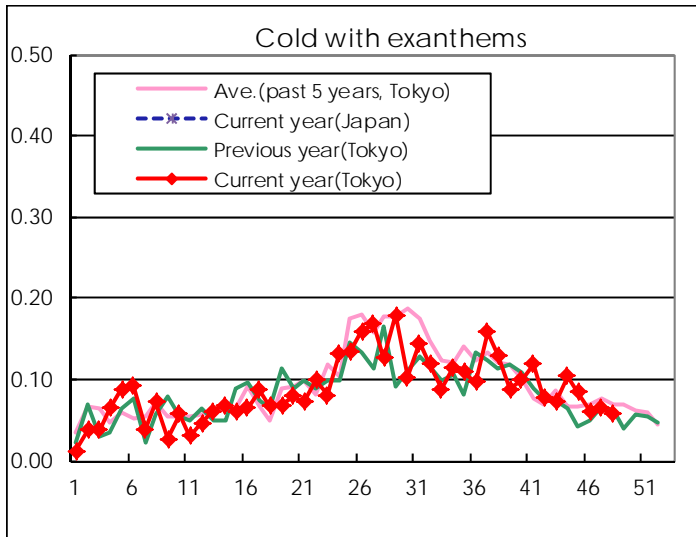
Diseases	Tokyo				
	45th	46th	47th	48th	/sentinel
Respiratory syncytial virus infection	268	355	382	340	1.30
Pharyngoconjunctival fever	122	136	157	113	0.43
Group A streptococcal pharyngitis	524	671	706	786	3.00
Infectious gastroenteritis	1,195	1,668	2,202	2,301	8.78
Chickenpox	229	213	229	249	0.95
Hand, foot, and mouth disease	157	154	146	99	0.38
Erythema infectiosum	125	163	167	176	0.67
Exanthem subitum	171	182	149	141	0.54
Pertussis	2	6	4	1	0.00
Herpangina	43	29	22	22	0.08
Mumps	59	61	52	73	0.28
Kawasaki disease	3	3	3	5	0.02
Cold with exanthems	22	16	17	15	0.06
Influenza	164	303	791	1,496	3.62
Acute hemorrhagic conjunctivitis		1			
Epidemic keratoconjunctivitis	18	17	27	14	0.36
Bacterial meningitis	1			1	0.04
Aseptic meningitis	2		1		
Mycoplasma pneumonia	6	9	10	10	0.40
Chlamydial pneumonia (excluding psittacosis)		1	1		
Infectious gastroenteritis (only by Rotavirus)				1	0.04
Influenza-Associated Hospitalizations	2		3	9	0.36

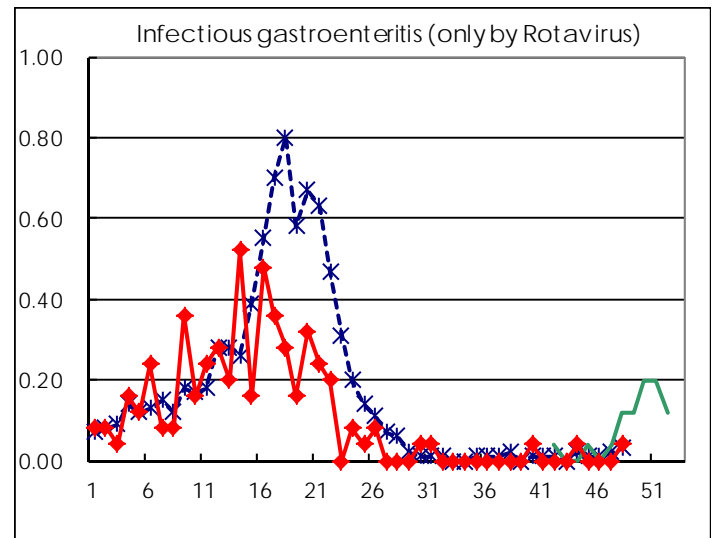
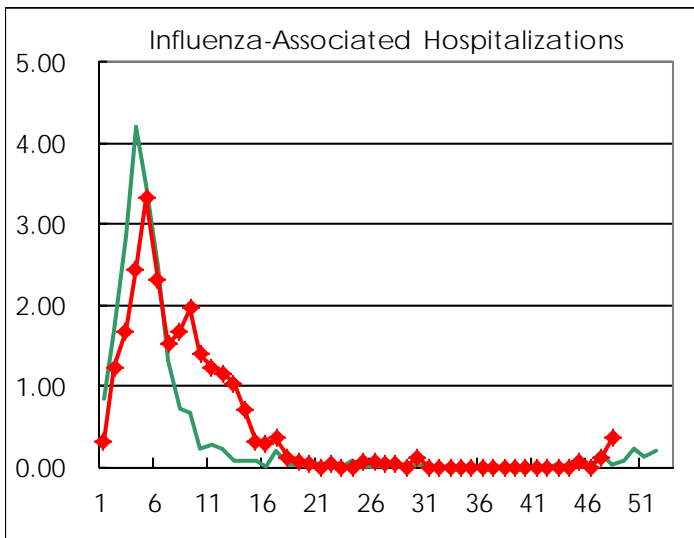
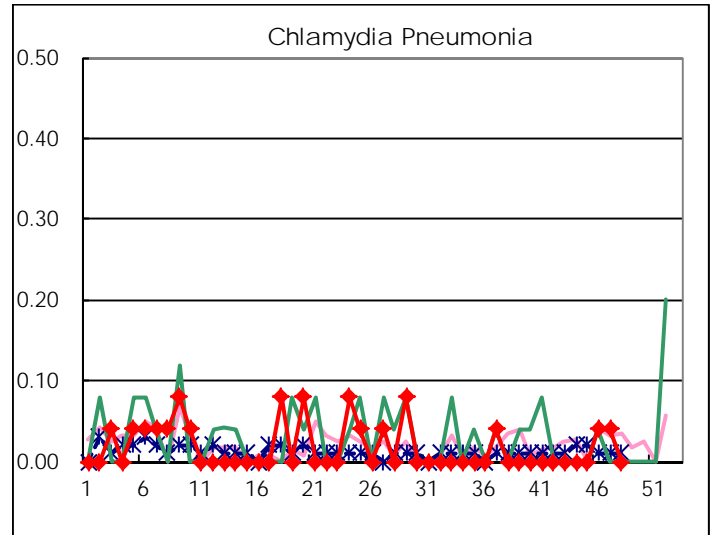
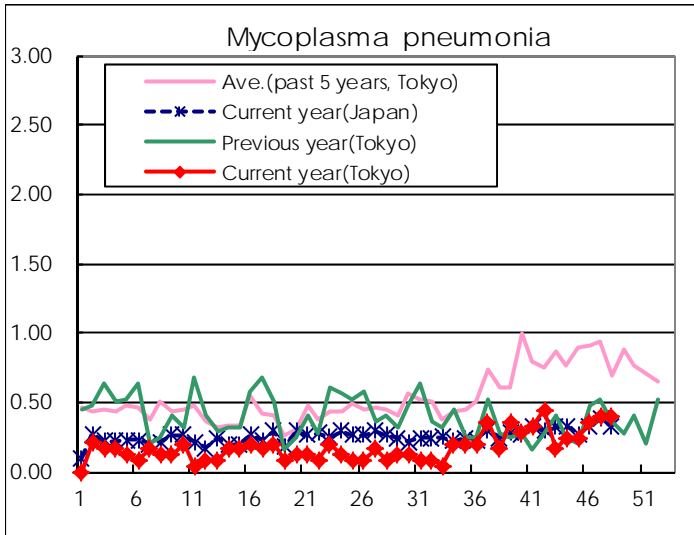
(Blank means 0.)

Disease Trend Graph (weekly reported cases per sentinel in comparison)









Number of sentinel facilities for weekly reporting		
Types of sentinels	Number of sentinels	Sentinels having reported
Pediatric	264	262
Influenza	419	413
Ophthalmic	39	39
Specially-designated	25	25

Tokyo Metropolitan Government
Infectious Disease Surveillance Center