
INFECTIOUS DISEASES WEEKLY REPORT

TOKYO IDWR

Tokyo Metropolitan Infectious Disease Surveillance Center

11 December 2014 / Number 49

Surveillance System in Tokyo, Japan

The infectious diseases which all physicians must report

All physicians must report to health centers the incidence of the diseases which are shown at page one. Health centers electronically report the individual cases to Tokyo Metropolitan Infectious Disease Surveillance Center.

The infectious diseases required to be reported by the sentinels

The numbers of patients who visit the sentinel clinics or hospitals during a week are reported to health centers in Tokyo. And they electronically report the numbers to Tokyo Metropolitan Infectious Disease Surveillance Center. We have about 500 sentinel clinics and hospitals in Tokyo.

1st Week is early January and 52nd Week is end of December.

Tokyo Metropolitan Institute of Public Health

TEL:81-3-3363-3213 FAX:81-3-5332-7365

e-mail:idsc@tokyo-eiken.go.jp

URL:idsc.tokyo-eiken.go.jp/

Number of patients with the diseases which all physicians must report

Category	Diseases	Tokyo					Japan	
		46th	47th	48th	49th	Cum 2014	49th	Cum 2014
I	Ebola hemorrhagic fever							
	Crimean-Congo hemorrhagic fever							
	Smallpox							
	South American hemorrhagic fever							
	Plague							
	Marburg disease							
	Lassa fever							
II	Acute poliomyelitis							
	Tuberculosis	92	74	62	75	3,749	313	24,290
	Diphtheria							
	Severe Acute Respiratory Syndrome(SARS)							
	Avian influenza H5N1							
※	Middle East Respiratory Syndrome (MERS)							
	Avian influenza H7N9							
III	Cholera					3		4
	Shigellosis	2		2	1	39	1	143
	Enterohemorrhagic Escherichia coli infection	3	7	3	4	356	39	4,023
	Typhoid fever	1				27		53
	Paratyphoid fever				1	8	1	15
IV	Hepatitis E				1	24	3	131
	West Nile fever							
	Hepatitis A			1		34		421
	Echinococcosis							18
	Yellow fever							
	Psittacosis					3	1	9
	Omsk hemorrhagic fever							
	Relapsing fever							1
	Kyasanur forest disease							
	Q fever							1
	Rabies							
	Coccidioidomycosis							1
	Monkeypox							
	Severe Fever with Thrombocytopenia Syndrome						1	59
	Hemorrhagic fever with renal syndrome							
	Western equine encephalitis							
	Tick-borne encephalitis							
	Anthrax							
	Chikungunya fever					4		12
	Scrub typhus(Tsutsugamushi disease)	1	1	4		17	15	246
	Dengue fever	1				161	2	332
	Eastern equine encephalitis							
	Avian influenza (excluding H5N1 and H7N9)							
	Nipah virus infection							
	Japanese spotted fever							232
	Japanese encephalitis							2
	Hantavirus pulmonary syndrome							
	Herpes B virus infection							
	Glanders							
	Brucellosis					4		10
	Venezuelan equine encephalitis							
	Hendra virus infection							
	Epidemic typhus							
Botulism							1	
Malaria	1	1			27		57	
Tularemia							1	
Lyme disease					2		16	
Lyssavirus infection(excluding rabies)								
Rift valley fever								
Melioidosis								
Legionellosis	5	1	1		101	16	1,140	
Leptospirosis					5		46	
Rocky mountain spotted fever								

Category	Diseases	Tokyo					Japan	
		46th	47th	48th	49th	Cum 2014	49th	Cum 2014
V	Amebiasis	3	2	5	7	215	14	1,040
	Viral hepatitis(excluding hepatitis A and E)		1	1	1	44	4	214
	CRE infection	8	3		7	44	9	238
	Acute encephalitis(excluding JE and WNE)	2		2		46	7	418
	Cryptosporidiosis			1		82		98
	Creutzfeldt-Jakob disease	1	1		1	16	4	164
	Severe invasive streptococcal infections(TSLS)		1			40	3	255
	Acquired immunodeficiency syndrome (AIDS)	10	12	8	8	477	16	1,416
	Giardiasis					13	1	62
	Invasive <i>Haemophilus influenzae</i> disease					21	1	180
	Invasive meningococcal disease			1		9		33
	Invasive pneumococcal disease	2	4	4	6	209	34	1,615
	Varicella (limited to hospitalized case)		1	2		9	8	110
	Congenital rubella syndrome					3		9
	Syphilis	7	10	5	5	459	21	1,534
	Disseminated cryptococcosis				1	3	1	21
	Tetanus					10		119
	Vancomycin-resistant <i>S. aureus</i> infection							
	Vancomycin-resistant Enterococcus infection			1		4		48
	Rubella				1	96	2	315
Measles					91	1	460	
MDRA infection					2		12	

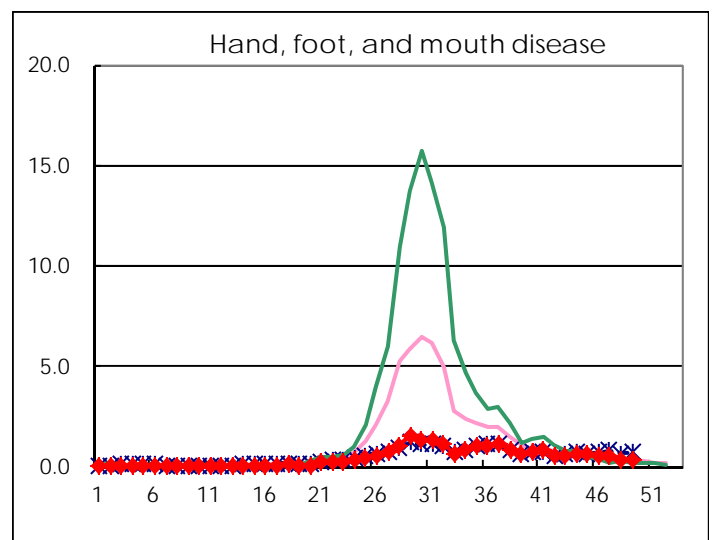
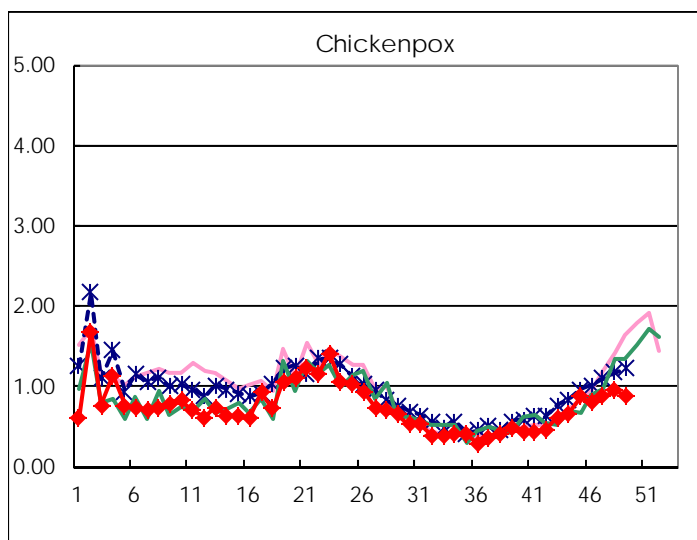
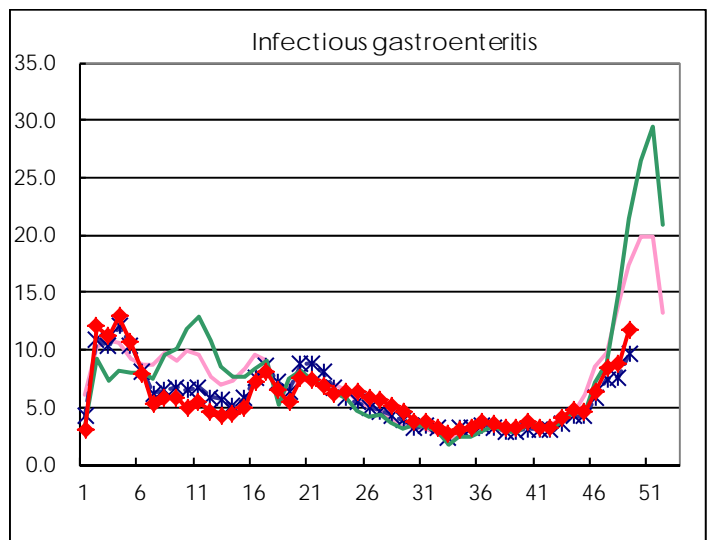
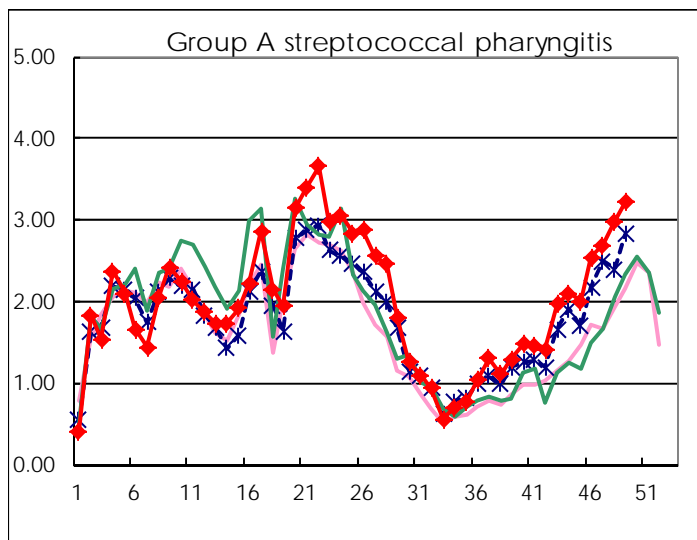
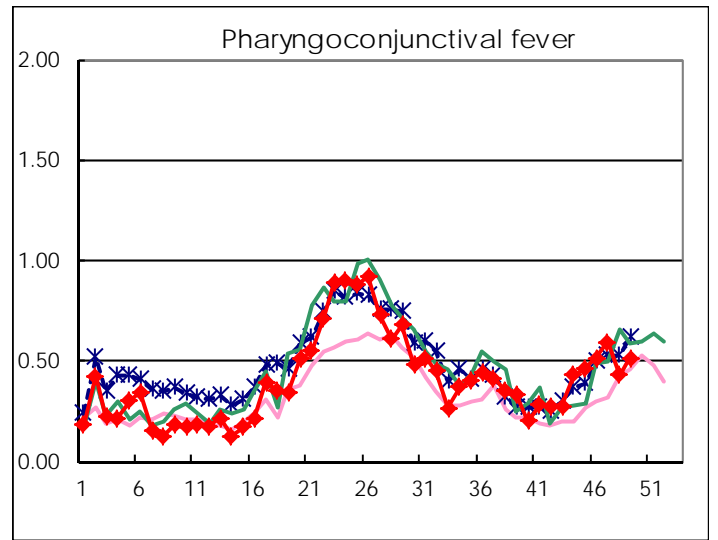
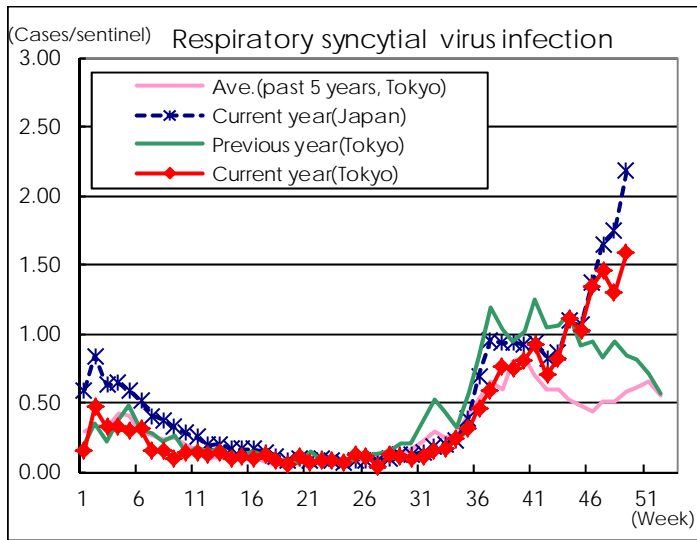
※ Designated infectious disease

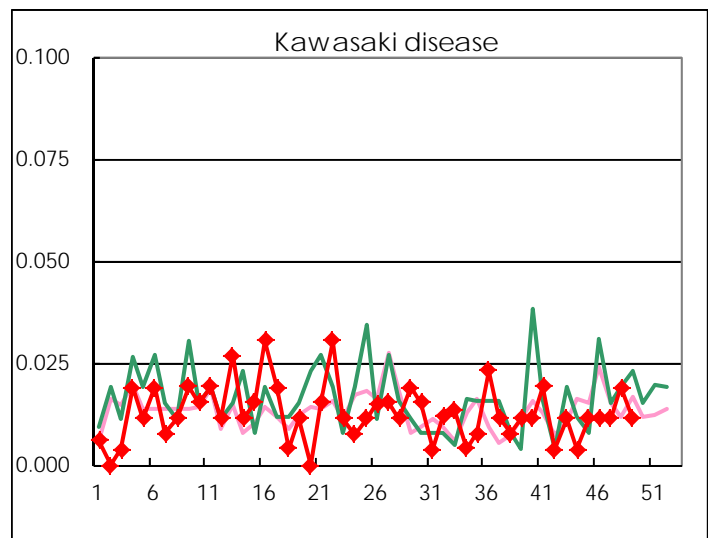
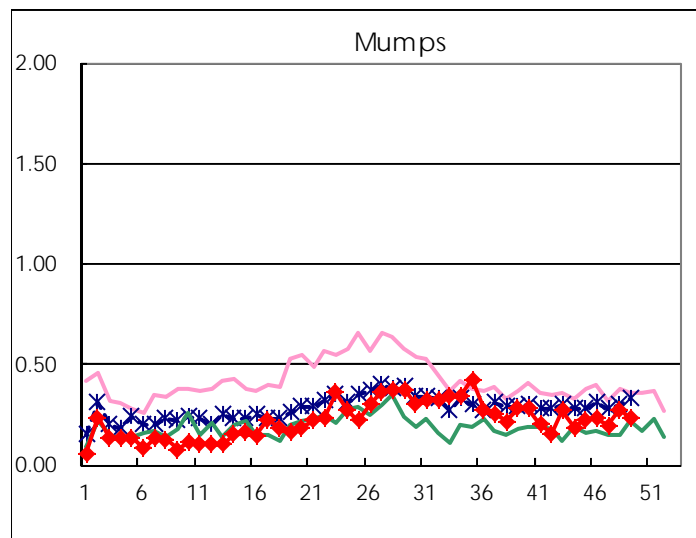
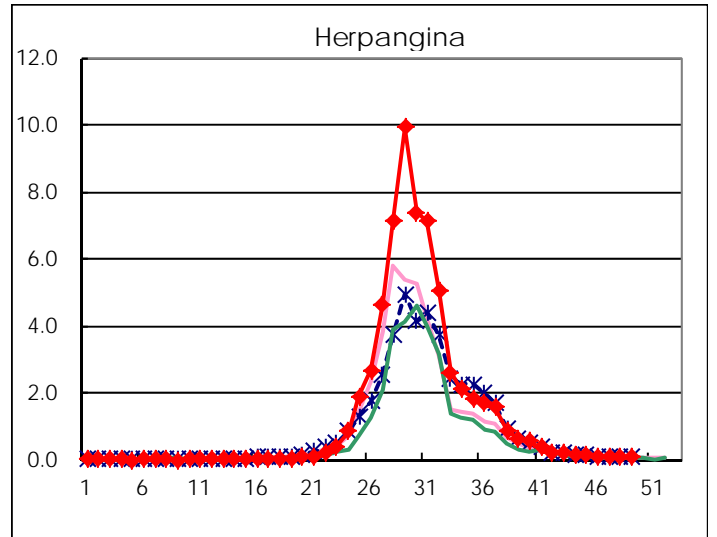
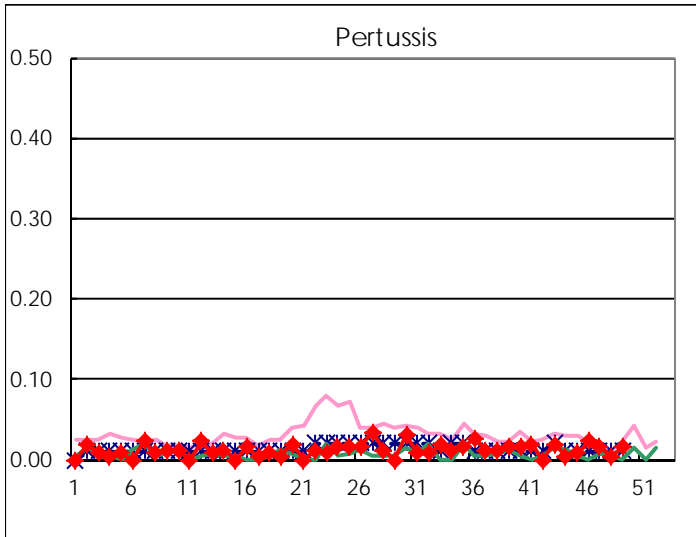
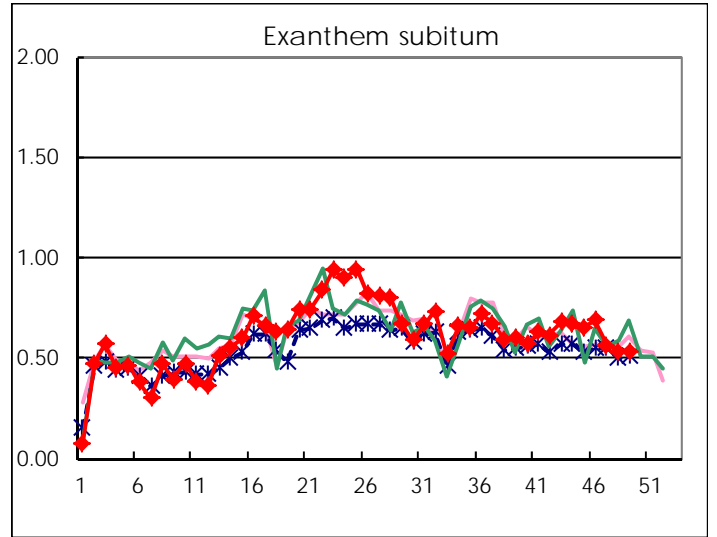
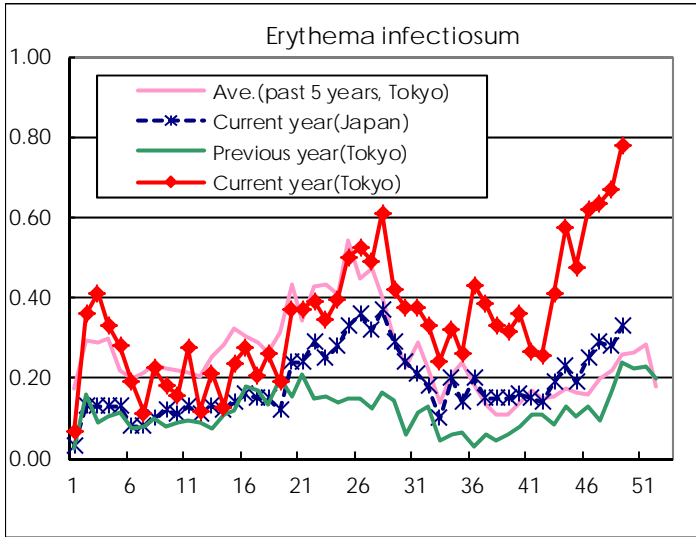
Number of patients with the diseases to be reported
by the designated clinics and hospitals

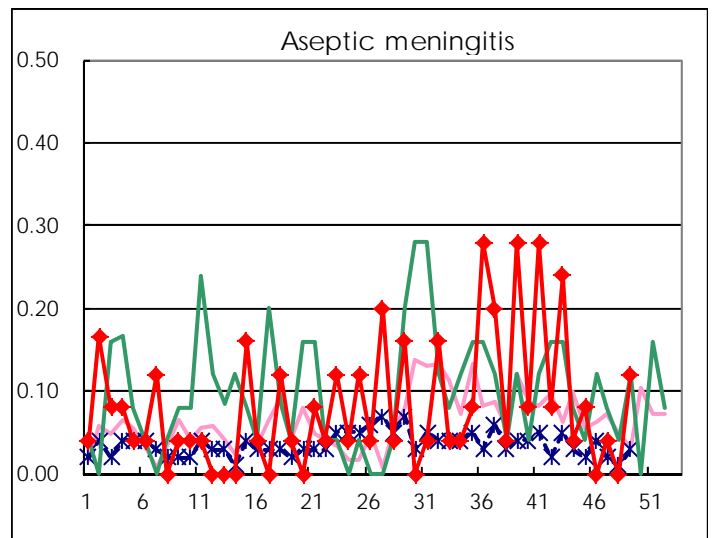
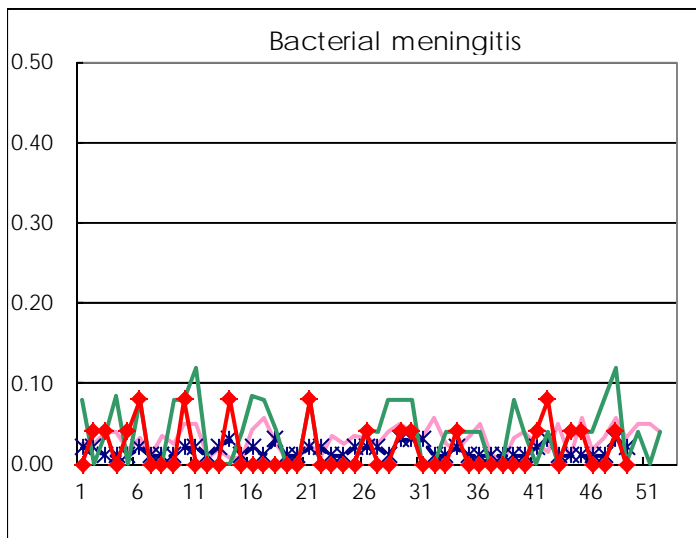
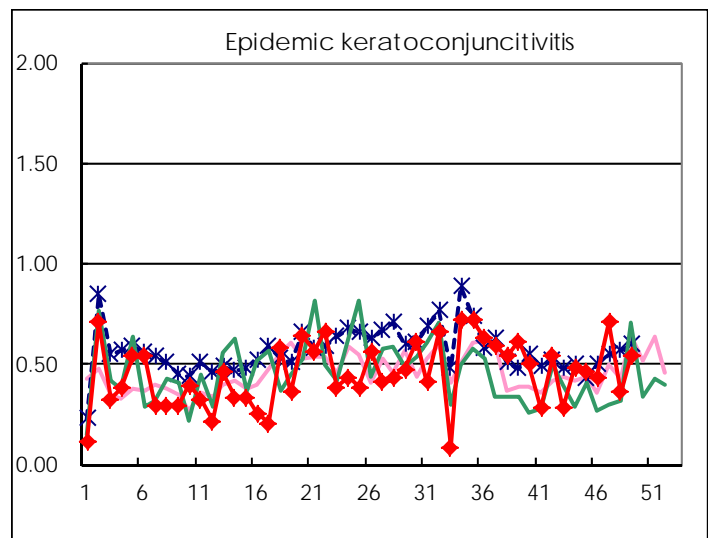
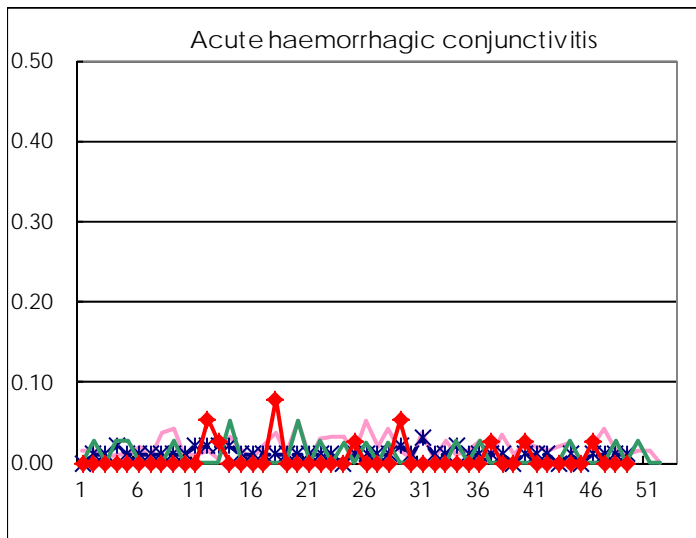
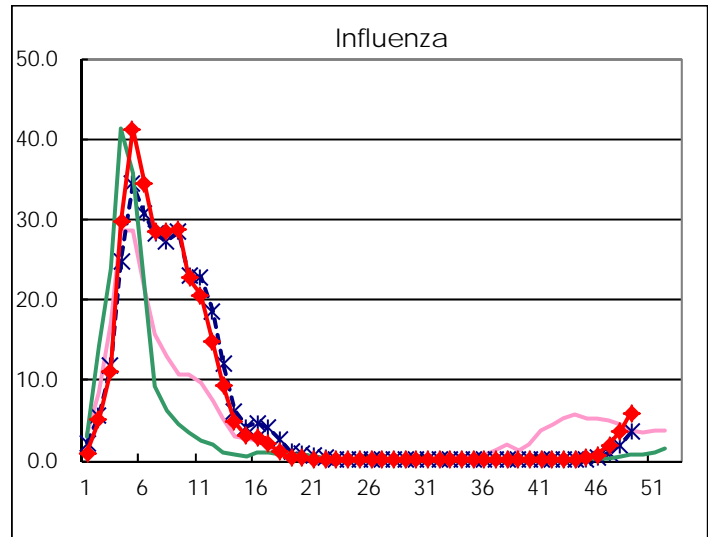
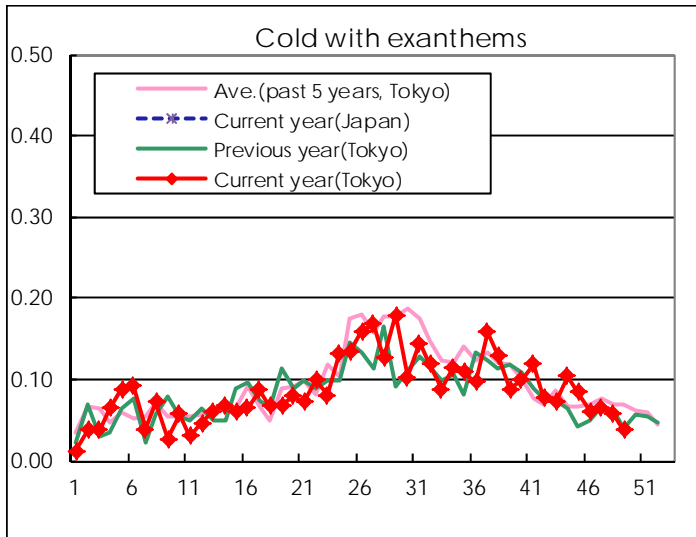
Diseases	Tokyo				
	46th	47th	48th	49th	/sentinel
Respiratory syncytial virus infection	355	382	340	415	1.58
Pharyngoconjunctival fever	136	157	113	135	0.52
Group A streptococcal pharyngitis	671	706	786	844	3.22
Infectious gastroenteritis	1,668	2,205	2,308	3,064	11.69
Chickenpox	213	230	249	233	0.89
Hand, foot, and mouth disease	154	146	99	101	0.39
Erythema infectiosum	163	167	176	204	0.78
Exanthem subitum	182	149	141	140	0.53
Pertussis	6	4	1	4	0.02
Herpangina	29	22	22	20	0.08
Mumps	61	52	73	61	0.23
Kawasaki disease	3	3	5	3	0.01
Cold with exanthems	16	17	15	10	0.04
Influenza	303	793	1,497	2,420	5.86
Acute hemorrhagic conjunctivitis	1				
Epidemic keratoconjunctivitis	17	27	14	21	0.54
Bacterial meningitis			1		
Aseptic meningitis		1		3	0.12
Mycoplasma pneumonia	9	10	10	12	0.48
Chlamydial pneumonia (excluding psittacosis)	1	1			
Infectious gastroenteritis (only by Rotavirus)			1	1	0.04
Influenza-Associated Hospitalizations		3	9	11	0.44

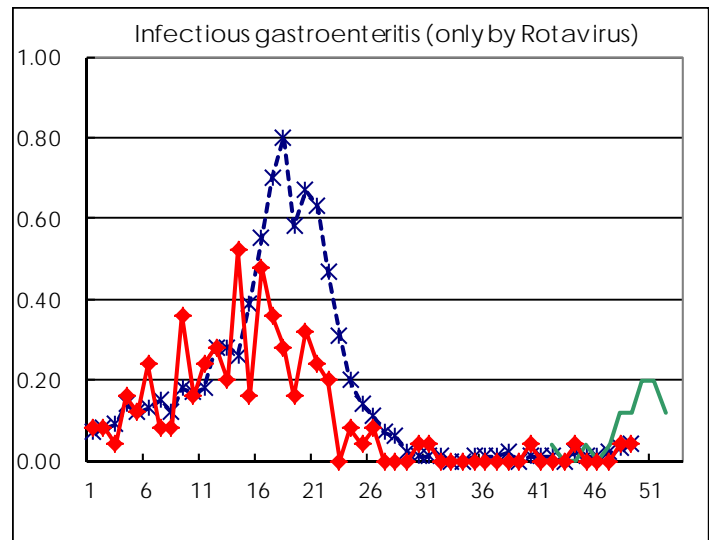
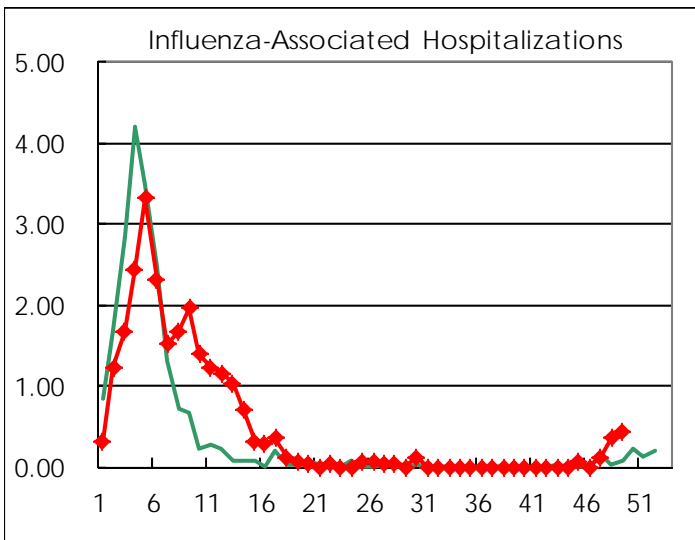
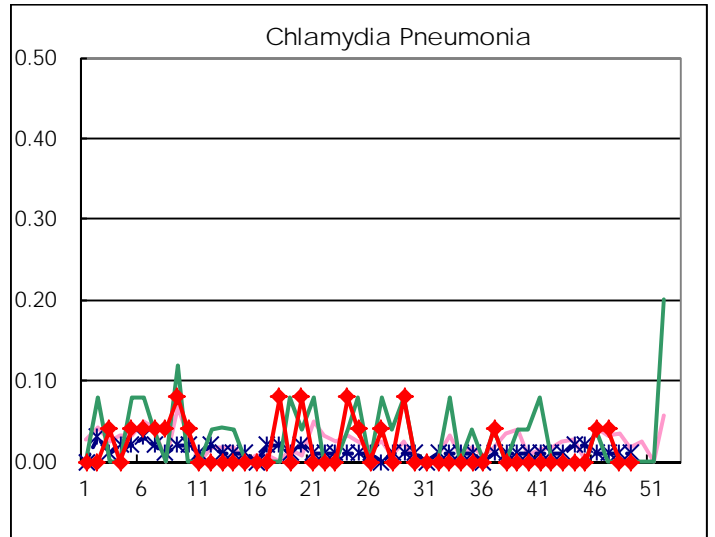
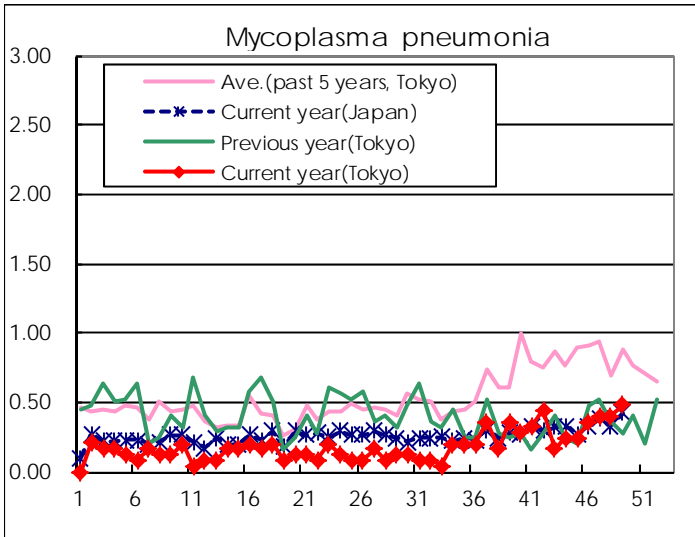
(Blank means 0.)

Disease Trend Graph (weekly reported cases per sentinel in comparison)









Number of sentinel facilities for weekly reporting		
Types of sentinels	Number of sentinels	Sentinels having reported
Pediatric	264	262
Influenza	419	413
Ophthalmic	39	39
Specially-designated	25	25

Tokyo Metropolitan Government
Infectious Disease Surveillance Center