
INFECTIOUS DISEASES WEEKLY REPORT

TOKYO IDWR

Tokyo Metropolitan Infectious Disease Surveillance Center

25 December 2014 / Number 51

Surveillance System in Tokyo, Japan

The infectious diseases which all physicians must report

All physicians must report to health centers the incidence of the diseases which are shown at page one. Health centers electronically report the individual cases to Tokyo Metropolitan Infectious Disease Surveillance Center.

The infectious diseases required to be reported by the sentinels

The numbers of patients who visit the sentinel clinics or hospitals during a week are reported to health centers in Tokyo. And they electronically report the numbers to Tokyo Metropolitan Infectious Disease Surveillance Center. We have about 500 sentinel clinics and hospitals in Tokyo.

1st Week is early January and 52nd Week is end of December.

Tokyo Metropolitan Institute of Public Health

TEL:81-3-3363-3213 FAX:81-3-5332-7365

e-mail:idsc@tokyo-eiken.go.jp

URL:idsc.tokyo-eiken.go.jp/

Number of patients with the diseases which all physicians must report

Category	Diseases	Tokyo					Japan		
		48th	49th	50th	51st	Cum 2014	51st	Cum 2014	
I	Ebola hemorrhagic fever								
	Crimean-Congo hemorrhagic fever								
	Smallpox								
	South American hemorrhagic fever								
	Plague								
	Marburg disease								
	Lassa fever								
II	Acute poliomyelitis								
	Tuberculosis	62	86	81	57	3,892	320	25,283	
	Diphtheria								
	Severe Acute Respiratory Syndrome(SARS)								
	Avian influenza H5N1								
※	Middle East Respiratory Syndrome (MERS)								
	Avian influenza H7N9								
III	Cholera					3	1	5	
	Shigellosis	2	1	1		40	5	154	
	Enterohemorrhagic Escherichia coli infection	3	4	4	2	362	33	4,110	
	Typhoid fever					27		53	
	Paratyphoid fever		1			8		16	
IV	Hepatitis E		1	1	1	26	5	143	
	West Nile fever								
	Hepatitis A	1		2	1	37	4	429	
	Echinococcosis							18	
	Yellow fever								
	Psittacosis					3		8	
	Omsk hemorrhagic fever								
	Relapsing fever							1	
	Kyasanur forest disease								
	Q fever							1	
	Rabies								
	Coccidioidomycosis							1	
	Monkeypox								
	Severe Fever with Thrombocytopenia Syndrome							60	
	Hemorrhagic fever with renal syndrome								
	Western equine encephalitis								
	Tick-borne encephalitis								
	Anthrax								
	Chikungunya fever					4	2	14	
	Scrub typhus(Tsutsugamushi disease)	4		1		18	14	302	
	Dengue fever					161	1	336	
	Eastern equine encephalitis								
	Avian influenza (excluding H5N1 and H7N9)								
	Nipah virus infection								
	Japanese spotted fever							237	
	Japanese encephalitis							2	
	Hantavirus pulmonary syndrome								
	Herpes B virus infection								
	Glanders								
	Brucellosis						4	10	
	Venezuelan equine encephalitis								
	Hendra virus infection								
	Epidemic typhus								
	Botulism							1	
	Malaria						27	1	60
	Tularemia							1	
	Lyme disease						2	17	
Lyssavirus infection(excluding rabies)									
Rift valley fever									
Melioidosis									
Legionellosis	1			1	102	25	1,201		
Leptospirosis					5		47		
Rocky mountain spotted fever									

Category	Diseases	Tokyo					Japan	
		48th	49th	50th	51st	Cum 2014	51st	Cum 2014
V	Amebiasis	5	7	5	3	223	16	1,087
	Viral hepatitis(excluding hepatitis A and E)	1	1	2		46	1	217
	CRE infection		7	1	5	50	8	281
	Acute encephalitis(excluding JE and WNE)	2		2	3	51	5	449
	Cryptosporidiosis	1				82		98
	Creutzfeldt-Jakob disease		1	1		17	3	172
	Severe invasive streptococcal infections(TSLS)			1		41	2	266
	Acquired immunodeficiency syndrome (AIDS)	8	8	14	7	498	22	1,487
	Giardiasis				2	15	3	67
	Invasive <i>Haemophilus influenzae</i> disease				1	22	3	190
	Invasive meningococcal disease	1				9		37
	Invasive pneumococcal disease	4	6	8	3	220	18	1,714
	Varicella (limited to hospitalized case)	2			1	10	3	129
	Congenital rubella syndrome					3		9
	Syphilis	5	7	16	11	488	17	1,603
	Disseminated cryptococcosis		1	1		4	3	30
	Tetanus					10		122
	Vancomycin-resistant <i>S. aureus</i> infection							
	Vancomycin-resistant Enterococcus infection	1				4	2	52
	Rubella		2		1	98	1	319
Measles				1	93	1	462	
MDRA infection					2		14	

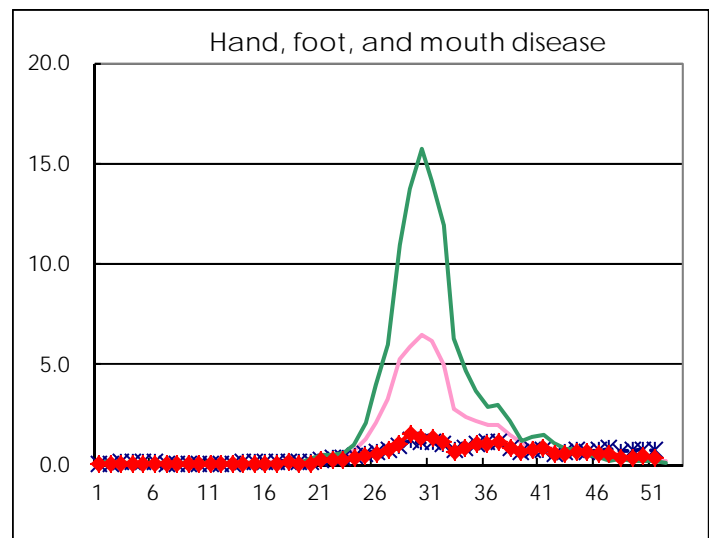
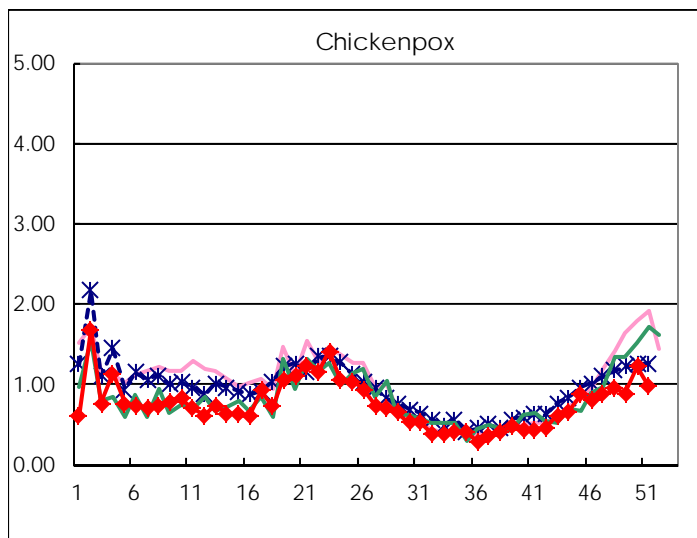
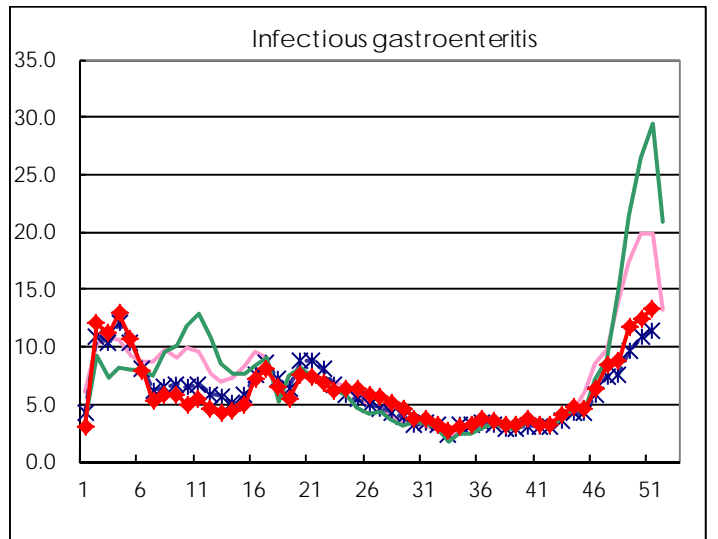
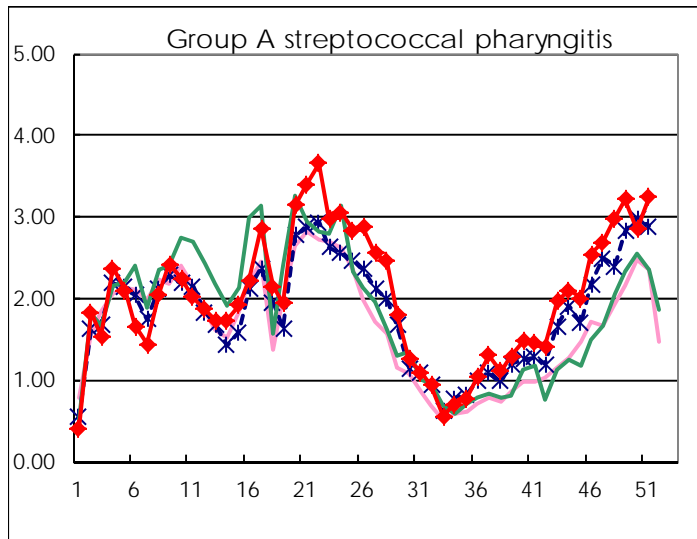
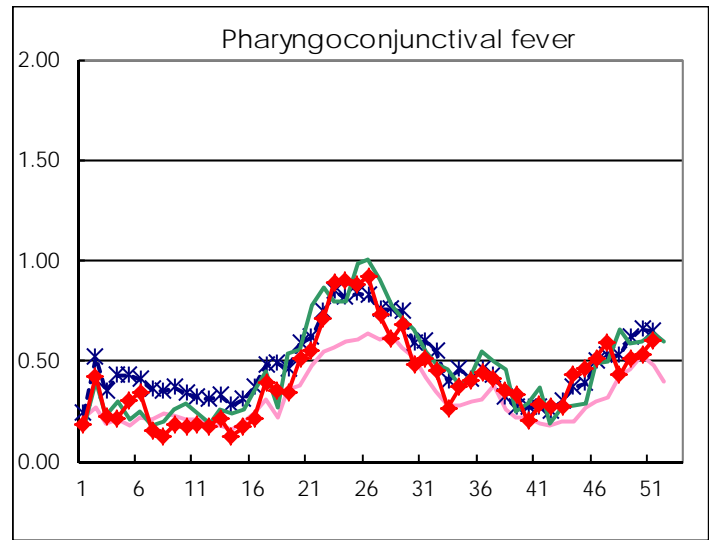
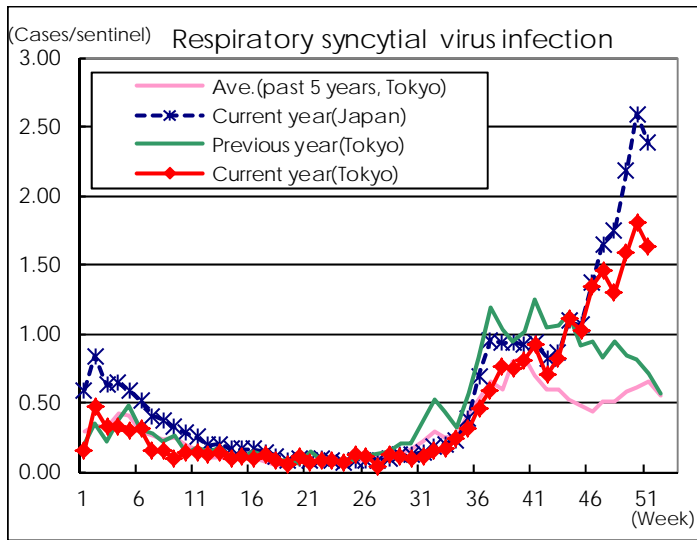
※ Designated infectious disease

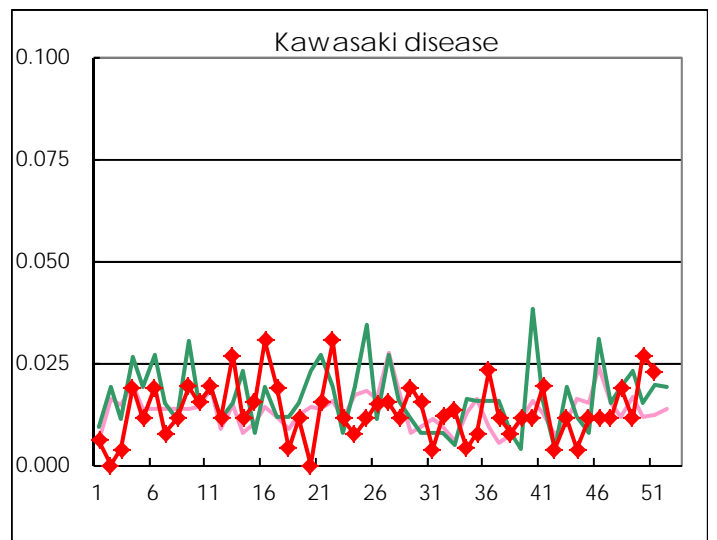
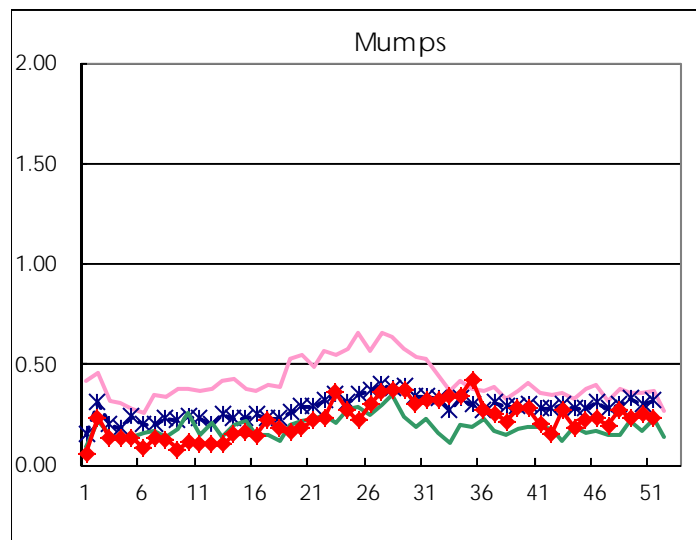
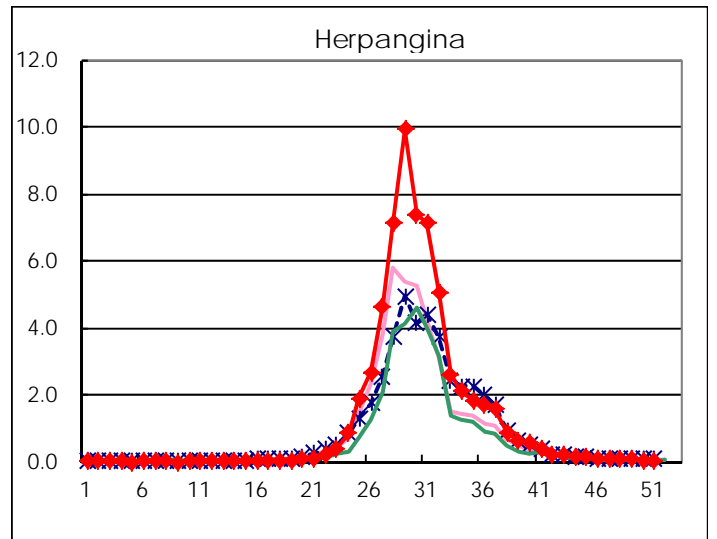
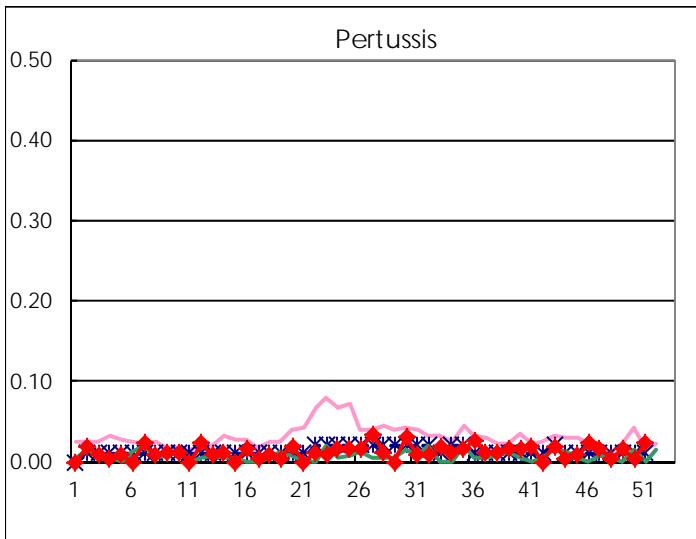
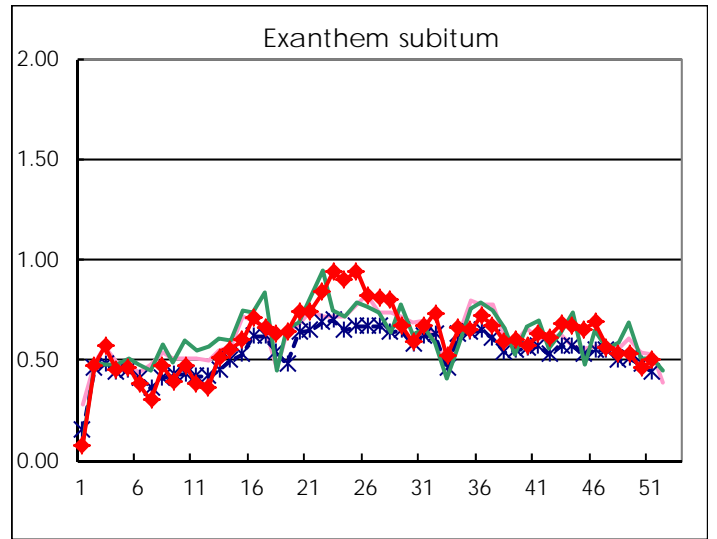
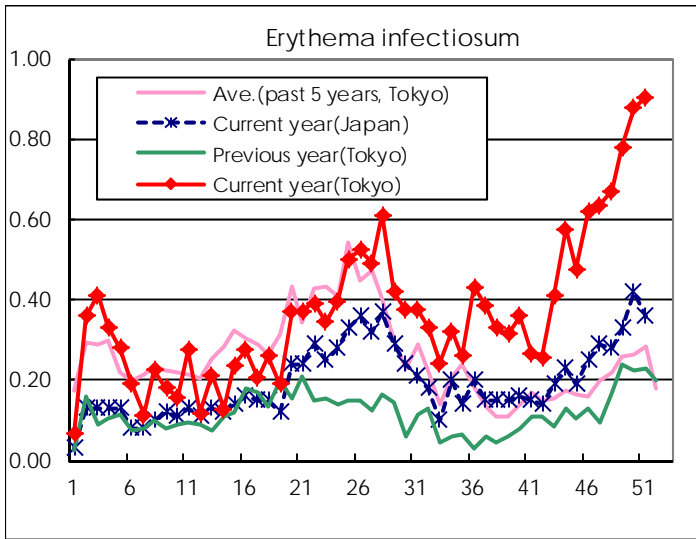
Number of patients with the diseases to be reported
by the designated clinics and hospitals

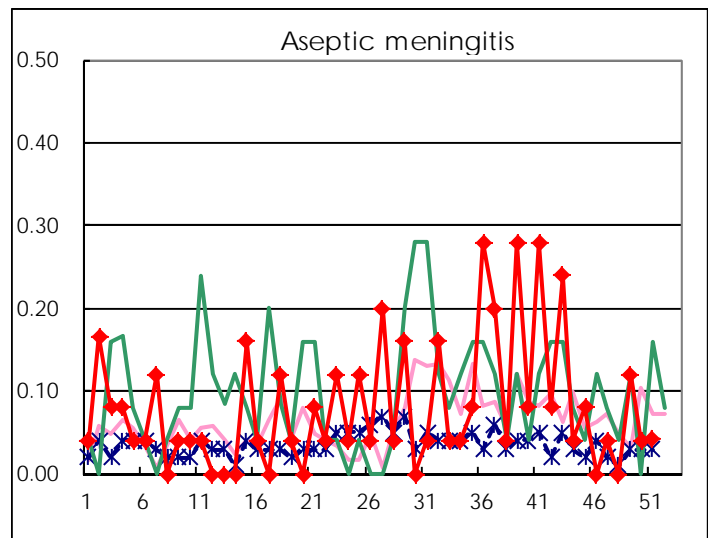
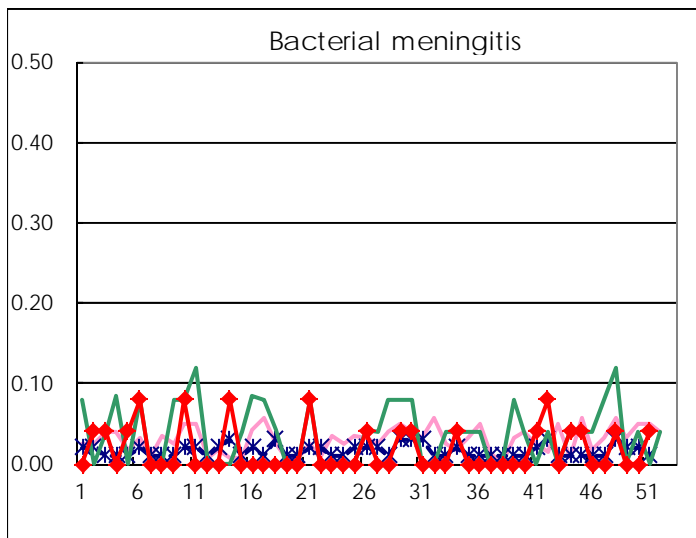
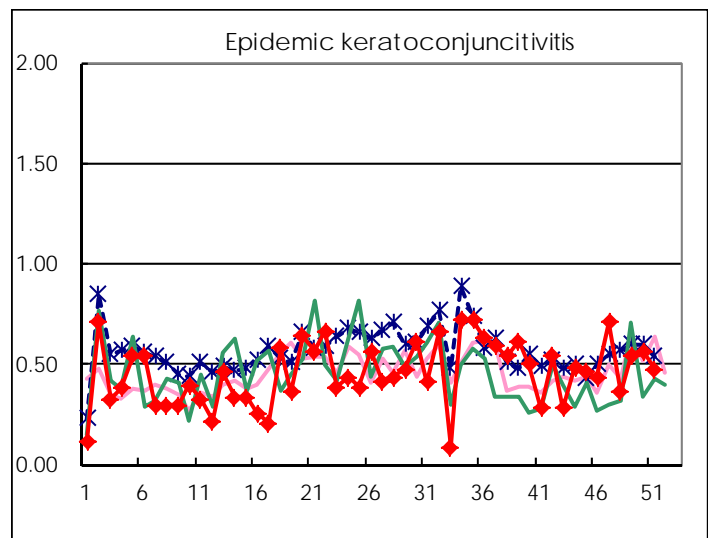
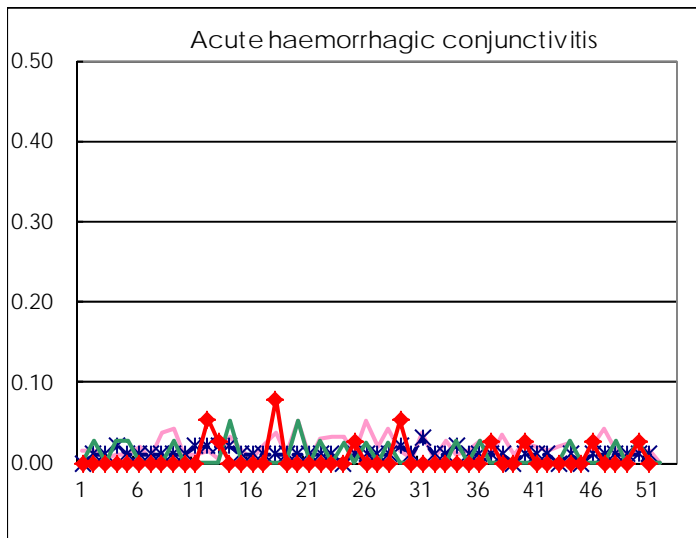
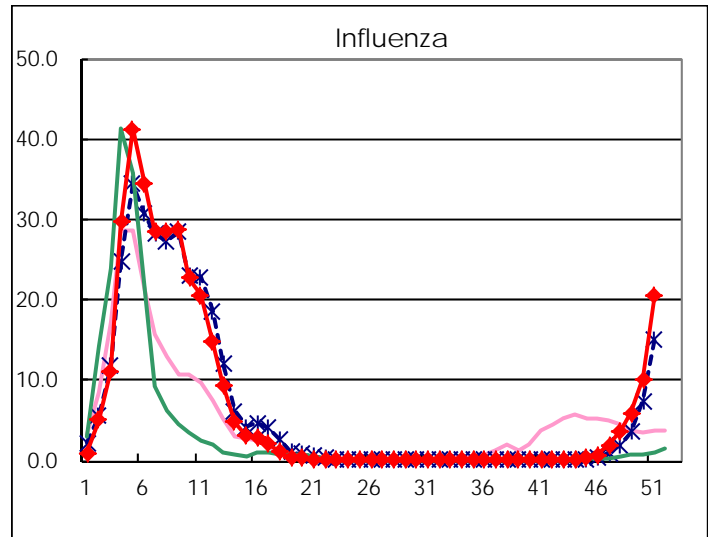
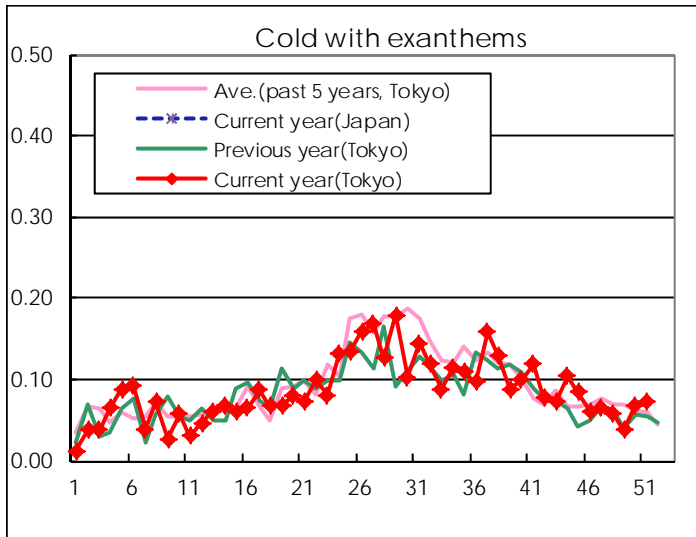
Diseases	Tokyo				
	48th	49th	50th	51st	/sentinel
Respiratory syncytial virus infection	340	415	472	428	1.63
Pharyngoconjunctival fever	113	135	140	159	0.60
Group A streptococcal pharyngitis	786	844	745	852	3.24
Infectious gastroenteritis	2,308	3,064	3,281	3,500	13.31
Chickenpox	249	233	322	258	0.98
Hand, foot, and mouth disease	99	101	114	99	0.38
Erythema infectiosum	176	204	230	238	0.90
Exanthem subitum	141	140	121	132	0.50
Pertussis	1	4	1	6	0.02
Herpangina	22	20	9	11	0.04
Mumps	73	61	66	61	0.23
Kawasaki disease	5	3	7	6	0.02
Cold with exanthems	15	10	18	19	0.07
Influenza	1,497	2,420	4,192	8,570	20.60
Acute hemorrhagic conjunctivitis			1		
Epidemic keratoconjunctivitis	14	21	22	18	0.47
Bacterial meningitis	1			1	0.04
Aseptic meningitis		3	1	1	0.04
Mycoplasma pneumonia	10	12	4	4	0.17
Chlamydial pneumonia (excluding psittacosis)					
Infectious gastroenteritis (only by Rotavirus)	1	1		1	0.04
Influenza-Associated Hospitalizations	9	11	9	40	1.67

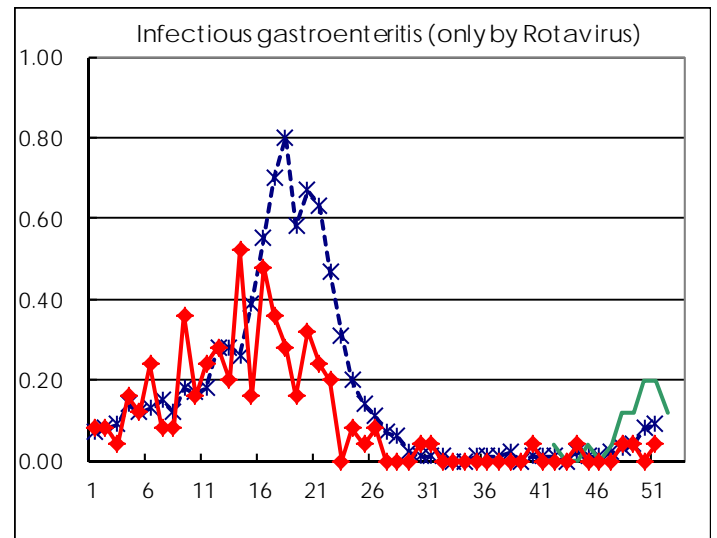
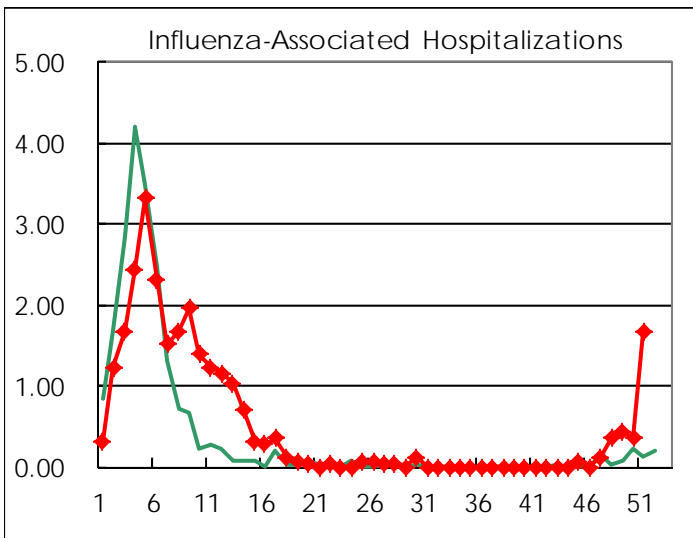
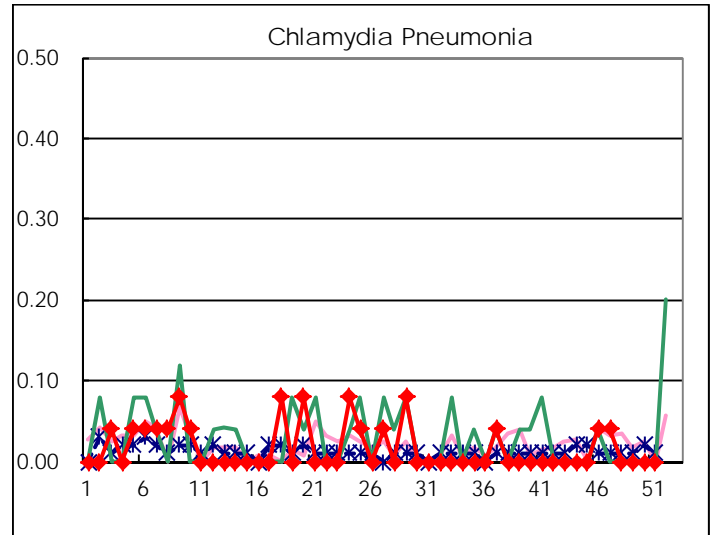
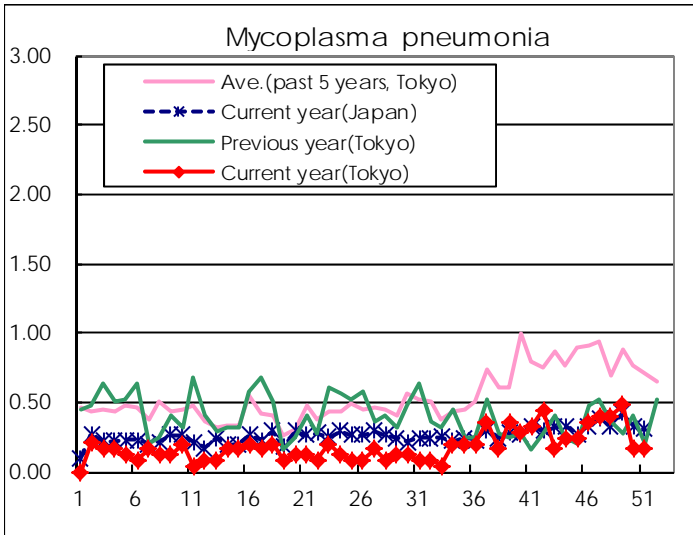
(Blank means 0.)

Disease Trend Graph (weekly reported cases per sentinel in comparison)









Number of sentinel facilities for weekly reporting		
Types of sentinels	Number of sentinels	Sentinels having reported
Pediatric	264	263
Influenza	419	416
Ophthalmic	39	38
Specially-designated	25	24

Tokyo Metropolitan Government
Infectious Disease Surveillance Center