

5 March 2015 / Number 9

Surveillance System in Tokyo, Japan

The infectious diseases which all physicians must report

All physicians must report to health centers the incidence of the diseases which are shown at page one. Health centers electronically report the individual cases to Tokyo Metropolitan Infectious Disease Surveillance Center.

The infectious diseases required to be reported by the sentinels

The numbers of patients who visit the sentinel clinics or hospitals during a week are reported to health centers in Tokyo. And they electronically report the numbers to Tokyo Metropolitan Infectious Disease Surveillance Center. We have about 500 sentinel clinics and hospitals in Tokyo.

Tokyo Metropolitan Institute of Public Health

TEL:81-3-3363-3213 FAX:81-3-5332-7365

e-mail:idsc@tokyo-eiken.go.jp

URL:idsc.tokyo-eiken.go.jp/

Number of patients with the diseases which all physicians must report

Category	Diseases	Tokyo					Japan	
		6th	7th	8th	9th	Cum 2015	9th	Cum 2015
I	Ebola hemorrhagic fever							
	Crimean-Congo hemorrhagic fever							
	Smallpox							
	South American hemorrhagic fever							
	Plague							
	Marburg disease							
II	Lassa fever							
	Acute poliomyelitis							
	Tuberculosis	63	53	77	66	534	396	3,585
	Diphtheria							
	Severe Acute Respiratory Syndrome(SARS)							
	Middle East Respiratory Syndrome (MERS)							
III	Avian influenza H5N1							
	Avian influenza H7N9							
	Cholera							2
	Shigellosis		1	2	2	8	4	20
	Enterohemorrhagic Escherichia coli infection	1	1		1	8	23	158
IV	Typhoid fever					2		6
	Paratyphoid fever					2		5
	Hepatitis E	2				3	3	29
	West Nile fever							
	Hepatitis A			2		6	7	56
	Echinococcosis					1		3
	Yellow fever							
	Psittacosis						1	3
	Omsk hemorrhagic fever							
	Relapsing fever							
	Kyasanur forest disease							
	Q fever							
	Rabies							
	Coccidioidomycosis							
	Monkeypox							
	Severe Fever with Thrombocytopenia Syndrome							1
	Hemorrhagic fever with renal syndrome							
	Western equine encephalitis							
	Tick-borne encephalitis							
	Anthrax							
	Chikungunya fever				1	2	1	2
	Scrub typhus(Tsutsugamushi disease)							17
	Dengue fever	2	2		1	10	3	32
	Eastern equine encephalitis							
	Avian influenza (excluding H5N1 and H7N9)							
	Nipah virus infection							
	Japanese spotted fever						1	1
	Japanese encephalitis							
	Hantavirus pulmonary syndrome							
	Herpes B virus infection							
	Glanders							
	Brucellosis							2
Venezuelan equine encephalitis								
Hendra virus infection								
Epidemic typhus								
Botulism								
Malaria							1	
Tularemia								
Lyme disease								
Lyssavirus infection(excluding rabies)								
Rift valley fever								
Melioidosis								
Legionellosis		1	1		13	9	185	
Leptospirosis								
Rocky mountain spotted fever								

Category	Diseases	Tokyo				Cum 2015	Japan	
		6th	7th	8th	9th		9th	Cum 2015
V	Amebiasis	5	4	1	7	35	15	177
	Viral hepatitis(excluding hepatitis A and E)	1	1	1	1	7	1	29
	CRE infection	4	4	1	3	17	15	178
	Acute encephalitis(excluding JE and WNE)	1	2	1	1	14	4	123
	Cryptosporidiosis	1				2		4
	Creutzfeldt-Jakob disease				1	4	2	29
	Severe invasive streptococcal infections(TSLS)	1	2		2	12	8	90
	Acquired immunodeficiency syndrome (AIDS)	10	6	7	8	56	12	186
	Giardiasis			1		1		11
	Invasive <i>Haemophilus influenzae</i> disease					5	4	44
	Invasive meningococcal disease					2		7
	Invasive pneumococcal disease	4	4	7	7	62	33	472
	Varicella (limited to hospitalized case)		1	2	1	7	1	50
	Congenital rubella syndrome							
	Syphilis	15	12	16	15	103	16	250
	Disseminated cryptococcosis					1		19
	Tetanus						1	12
	Vancomycin-resistant <i>S. aureus</i> infection							
	Vancomycin-resistant Enterococcus infection							8
Rubella	1	1	1	3	7	4	31	
Measles					1		6	
MDRA infection						1	3	

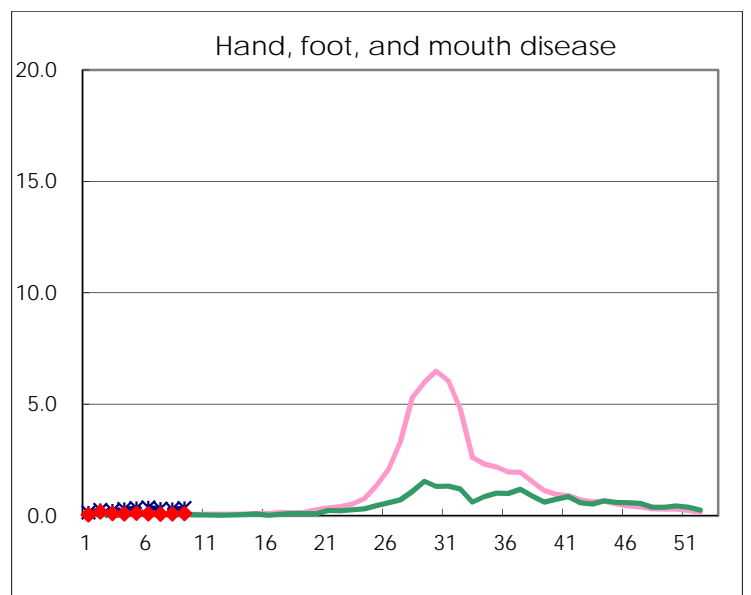
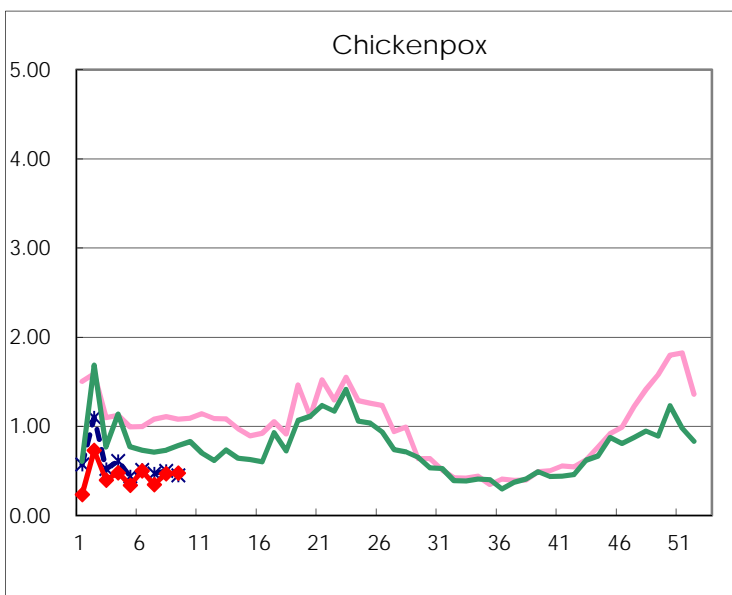
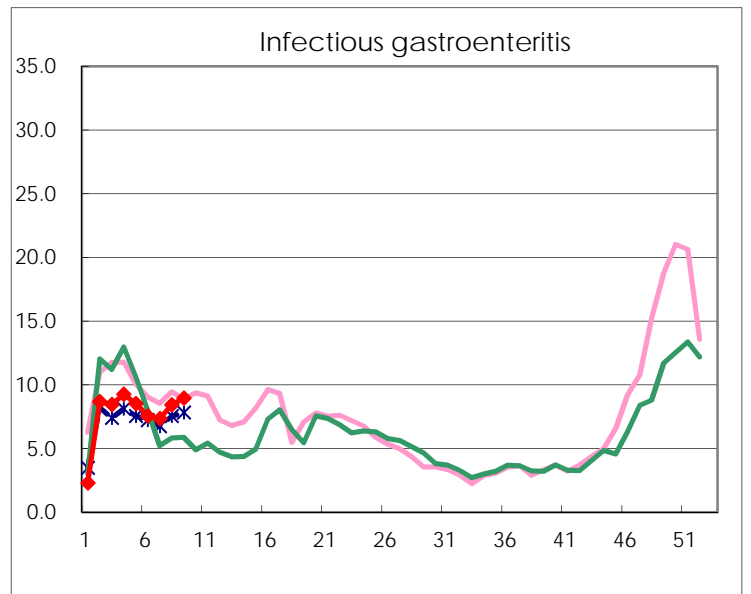
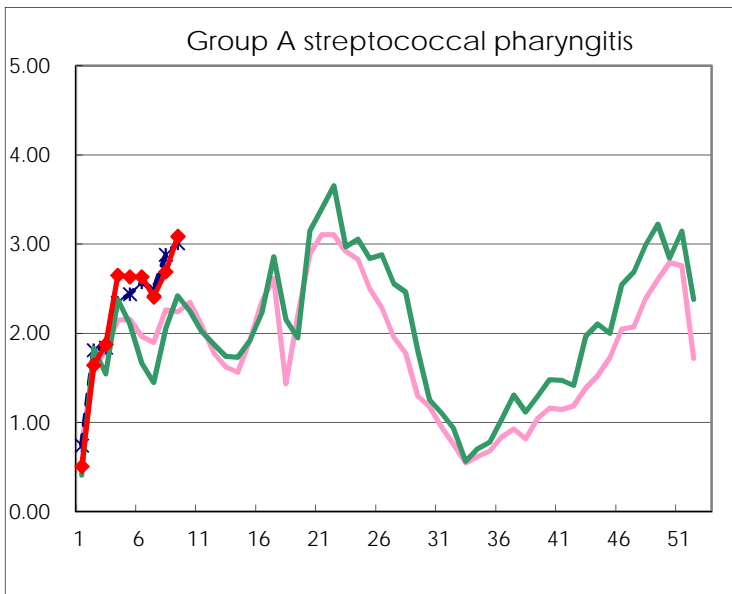
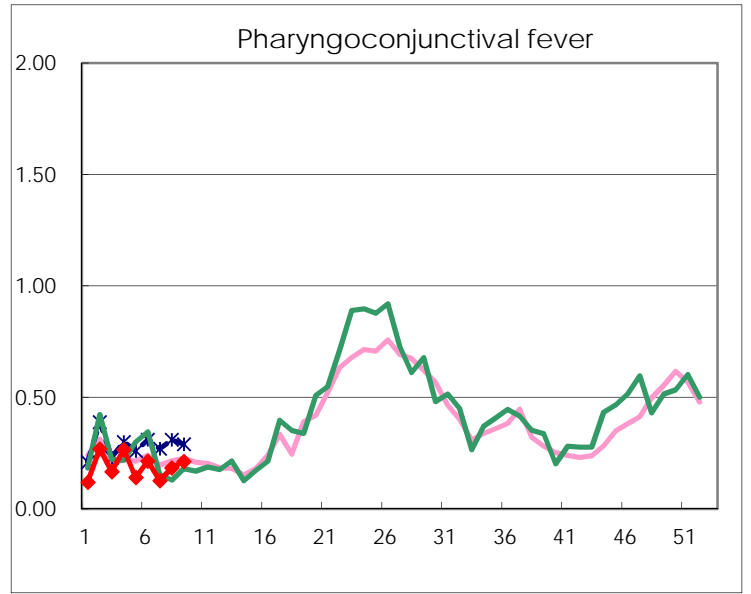
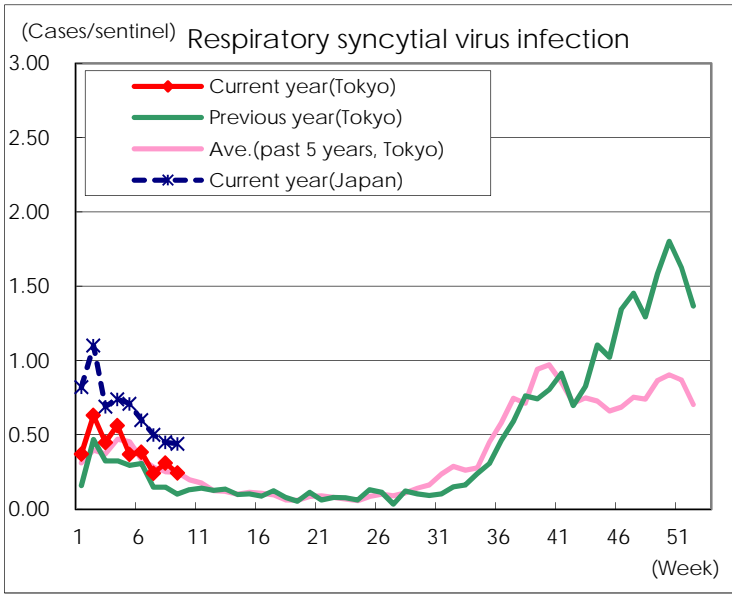
※ Designated infectious disease

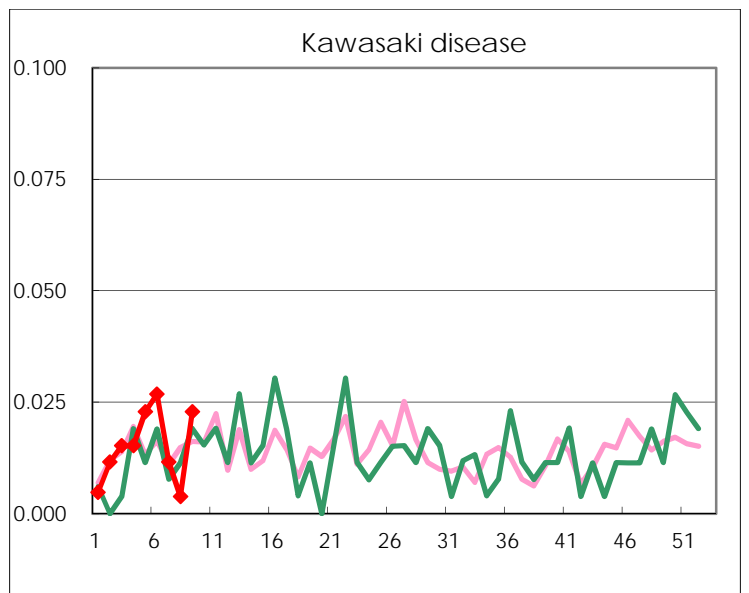
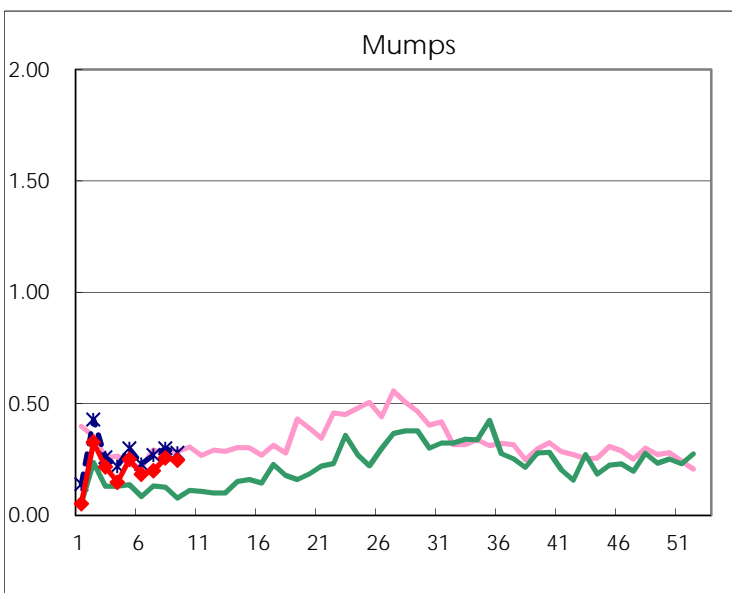
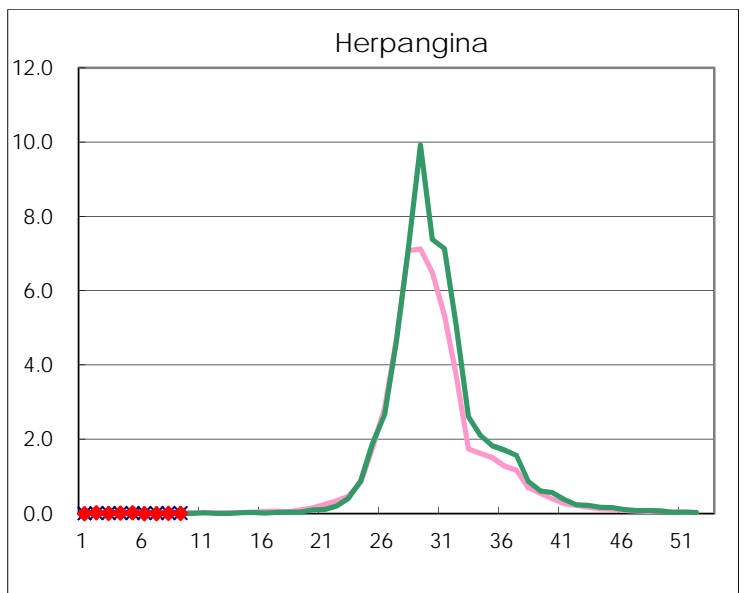
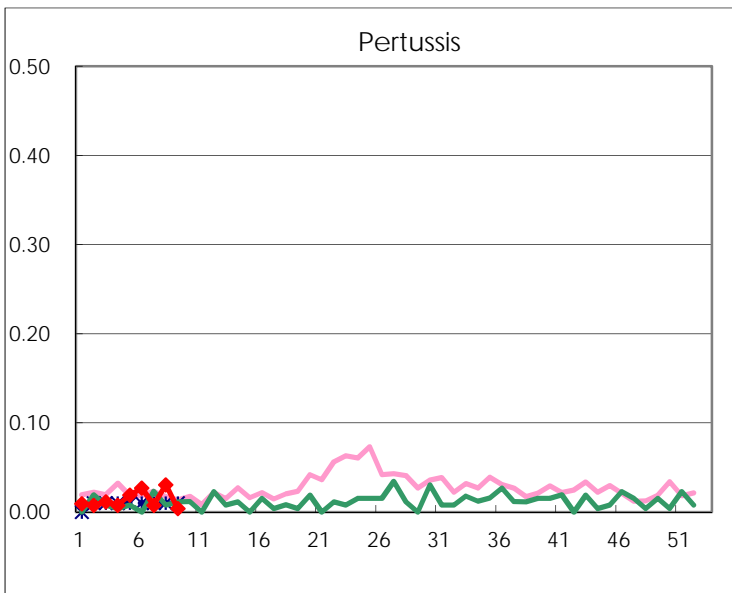
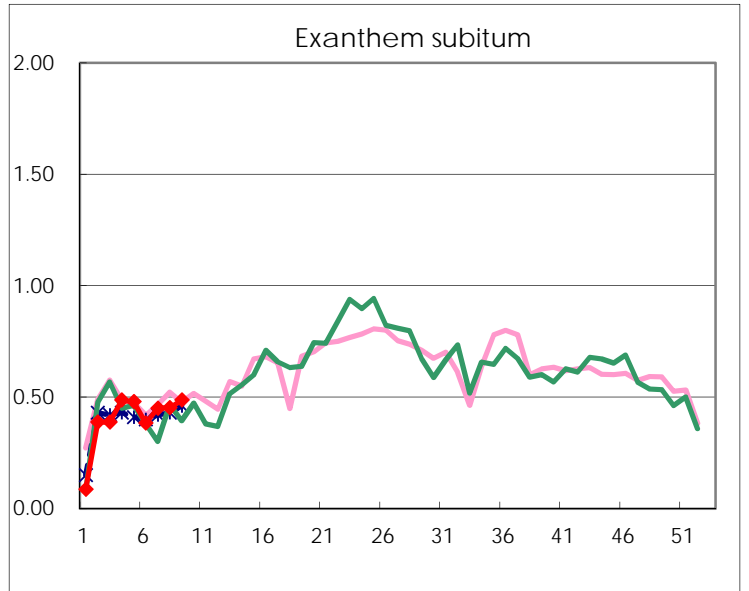
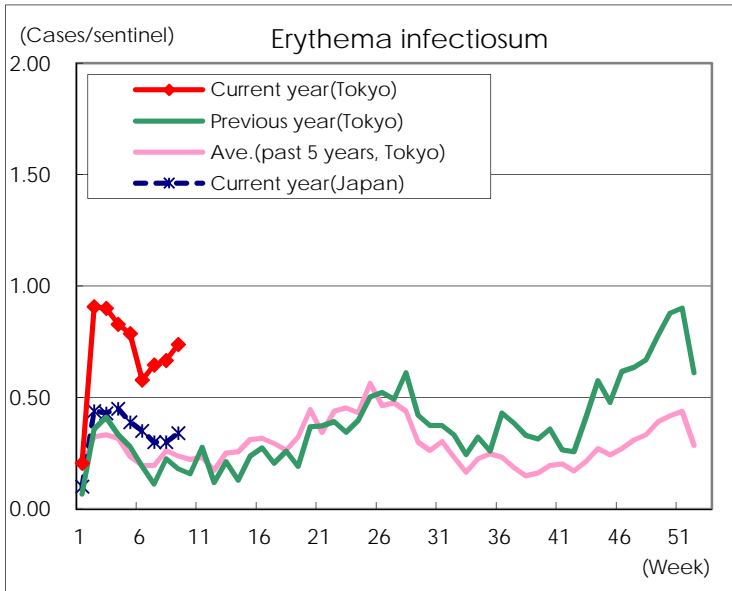
Number of patients with the diseases to be reported
by the designated clinics and hospitals

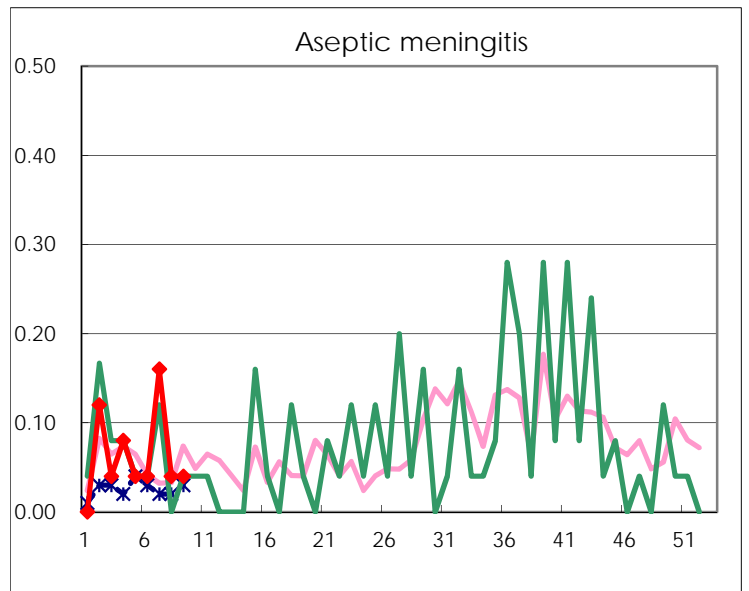
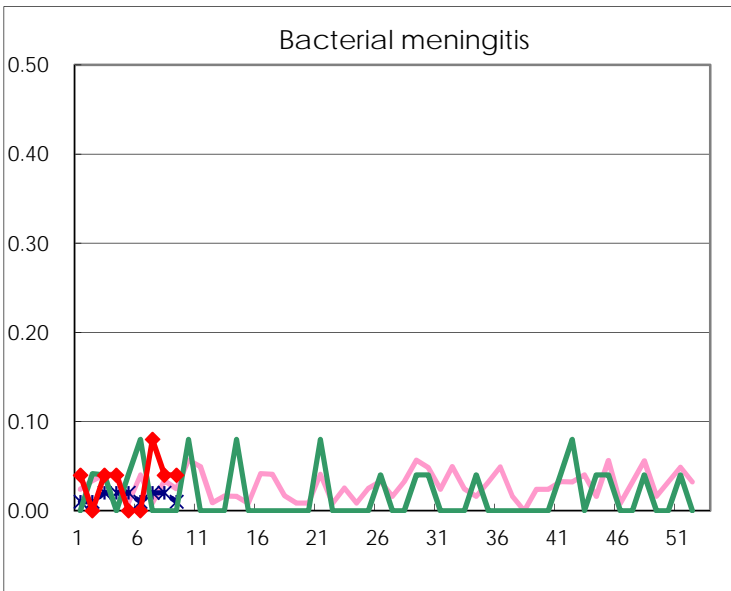
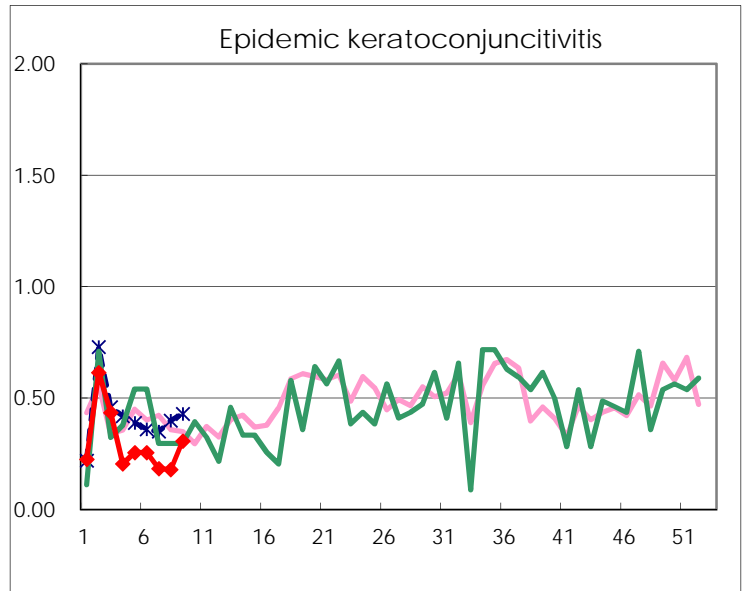
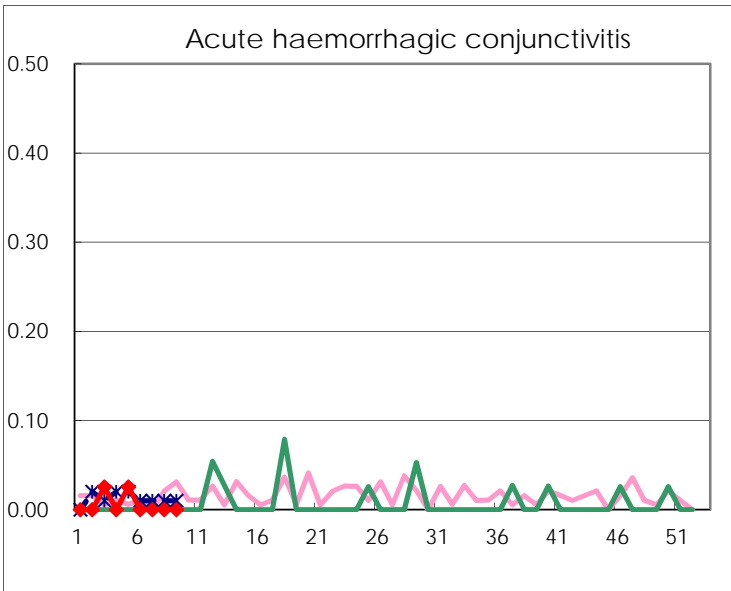
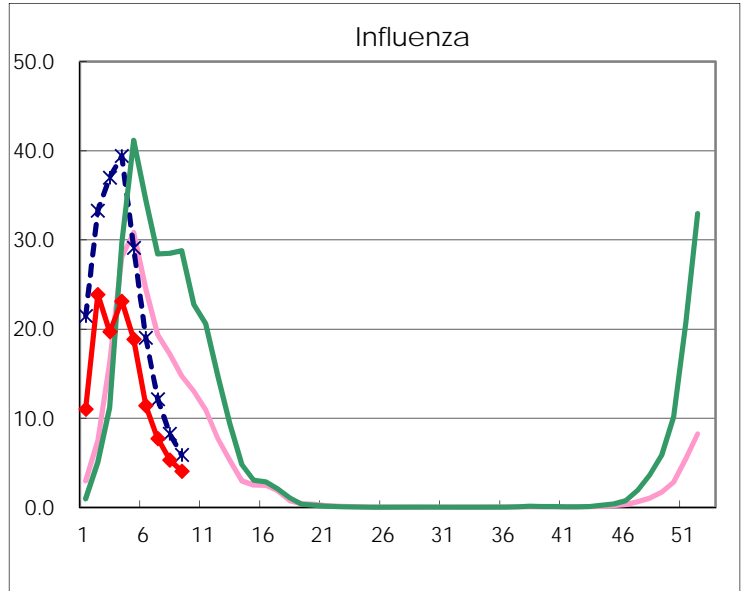
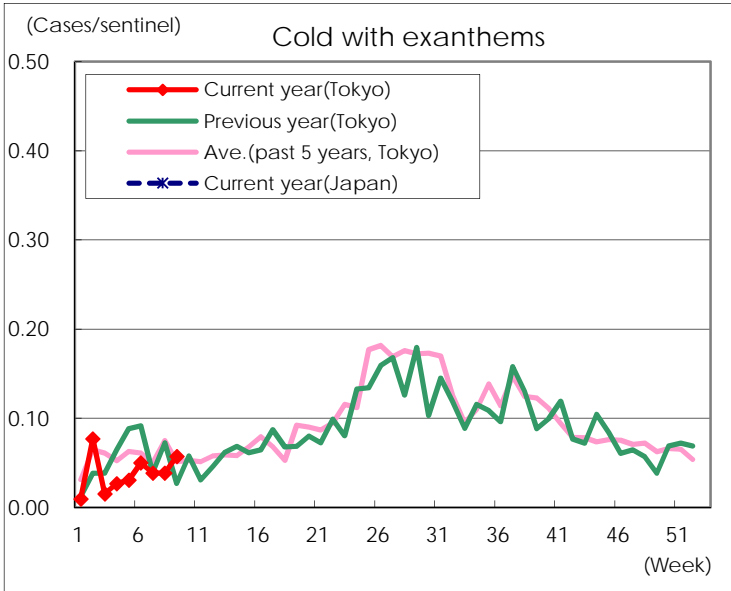
Diseases	Tokyo				
	6th	7th	8th	9th	/sentinel
Respiratory syncytial virus infection	100	63	81	64	0.24
Pharyngoconjunctival fever	56	33	48	56	0.21
Group A streptococcal pharyngitis	687	626	702	812	3.09
Infectious gastroenteritis	1,968	1,910	2,196	2,354	8.95
Chickenpox	130	90	122	125	0.48
Hand, foot, and mouth disease	22	20	23	26	0.10
Erythema infectiosum	151	168	174	194	0.74
Exanthem subitum	100	117	118	128	0.49
Pertussis	7	2	8	1	
Herpangina	1	1	3	2	0.01
Mumps	48	52	67	65	0.25
Kawasaki disease	7	3	1	6	0.02
Cold with exanthems	13	10	10	15	0.06
Influenza	4,743	3,204	2,213	1,694	4.07
Acute hemorrhagic conjunctivitis					
Epidemic keratoconjunctivitis	10	7	7	12	0.31
Bacterial meningitis		2	1	1	0.04
Aseptic meningitis	1	4	1	1	0.04
Mycoplasma pneumonia	3	7	6	12	0.48
Chlamydial pneumonia (excluding psittacosis)	1				
Infectious gastroenteritis (only by Rotavirus)	1	5	3	2	0.08
Influenza-Associated Hospitalizations	23	17	16	16	0.64

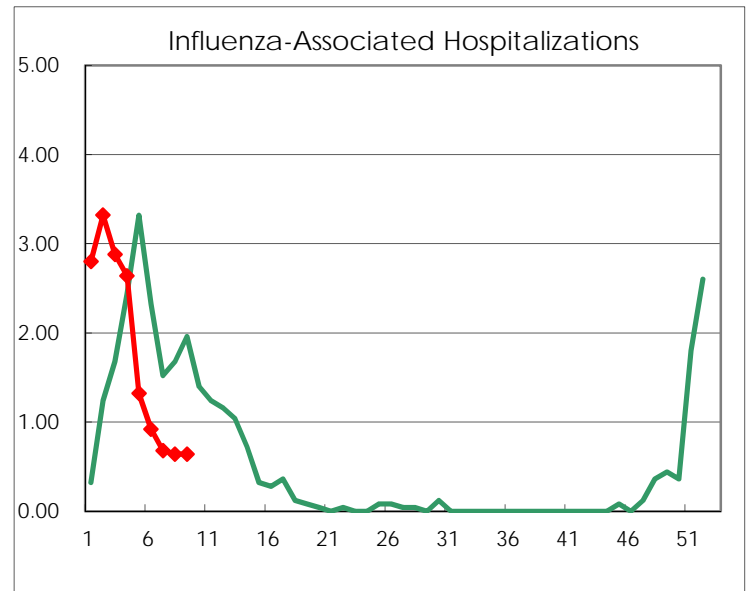
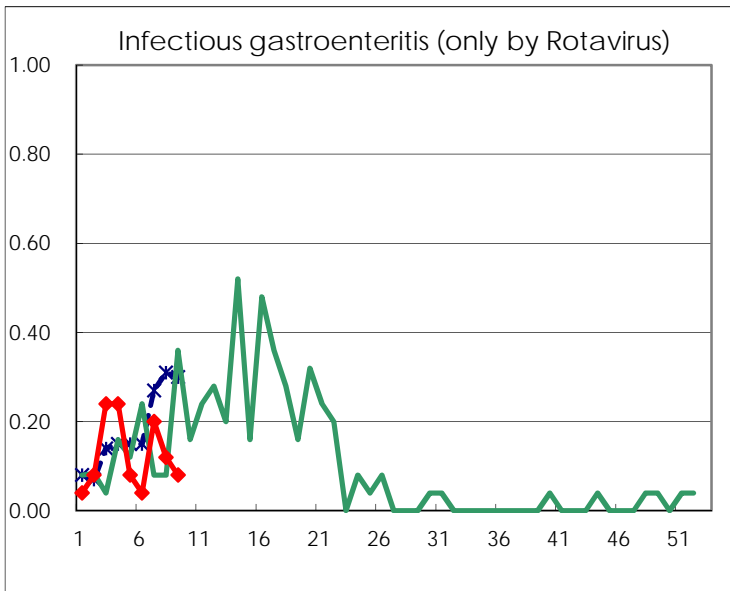
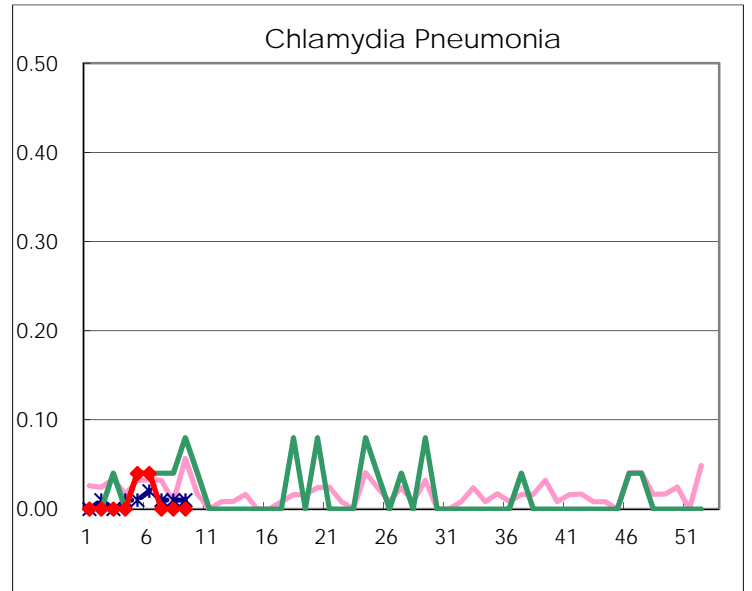
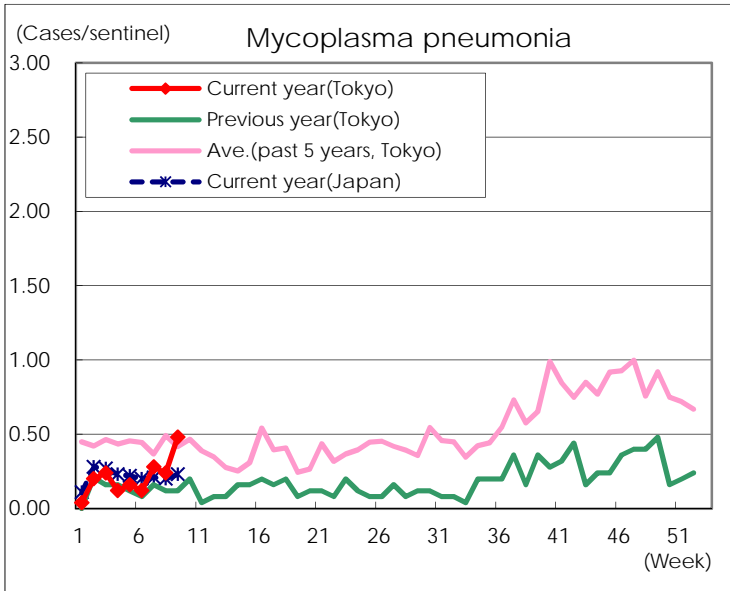
(Blank means 0.)

Disease Trend Graph (weekly reported cases per sentinelin comparison)









Number of sentinel facilities for weekly reporting		
Types of sentinels	Number of sentinels	Sentinels having reported
Pediatric	264	263
Influenza	419	416
Ophthalmic	39	39
Specially-designated	25	25