

16 April 2015 / Number 15

Surveillance System in Tokyo, Japan

The infectious diseases which all physicians must report

All physicians must report to health centers the incidence of the diseases which are shown at page one. Health centers electronically report the individual cases to Tokyo Metropolitan Infectious Disease Surveillance Center.

The infectious diseases required to be reported by the sentinels

The numbers of patients who visit the sentinel clinics or hospitals during a week are reported to health centers in Tokyo. And they electronically report the numbers to Tokyo Metropolitan Infectious Disease Surveillance Center. We have about 500 sentinel clinics and hospitals in Tokyo.

Tokyo Metropolitan Institute of Public Health

TEL:81-3-3363-3213 FAX:81-3-5332-7365

e-mail:www@tokyo-eiken.go.jp

URL:idsc.tokyo-eiken.go.jp/

Number of patients with the diseases which all physicians must report

Category	Diseases	Tokyo					Japan	
		12th	13th	14th	15th	Cum 2015	15th	Cum 2015
I	Ebola hemorrhagic fever							
	Crimean-Congo hemorrhagic fever							
	Smallpox							
	South American hemorrhagic fever							
	Plague							
	Marburg disease							
	Lassa fever							
II	Acute poliomyelitis							
	Tuberculosis	88	66	62	77	966	317	6,264
	Diphtheria							
	Severe Acute Respiratory Syndrome(SARS)							
	Middle East Respiratory Syndrome (MERS)							
	Avian influenza H5N1							
	Avian influenza H7N9							
III	Cholera							3
	Shigellosis		3			11	5	36
	Enterohemorrhagic Escherichia coli infection	2		1		16	9	256
	Typhoid fever		1	1	1	5	1	16
	Paratyphoid fever					2	1	12
IV	Hepatitis E			3		10	2	55
	West Nile fever							
	Hepatitis A		2		1	9	3	89
	Echinococcosis					1		4
	Yellow fever							
	Psittacosis							3
	Omsk hemorrhagic fever							
	Relapsing fever							
	Kyasanur forest disease							
	Q fever							
	Rabies							
	Coccidioidomycosis							1
	Monkeypox							
	Severe Fever with Thrombocytopenia Syndrome							1
	Hemorrhagic fever with renal syndrome							
	Western equine encephalitis							
	Tick-borne encephalitis							
	Anthrax							
	Chikungunya fever					2		3
	Scrub typhus(Tsutsugamushi disease)				1	1	3	23
	Dengue fever	1	1	4		18	4	66
	Eastern equine encephalitis							
	Avian influenza (excluding H5N1 and H7N9)							
	Nipah virus infection							
	Japanese spotted fever							2
	Japanese encephalitis							
	Hantavirus pulmonary syndrome							
	Herpes B virus infection							
	Glanders							
	Brucellosis							2
	Venezuelan equine encephalitis							
	Hendra virus infection							
Epidemic typhus								
Botulism								
Malaria	1				2	1	4	
Tularemia								
Lyme disease								
Lyssavirus infection(excluding rabies)								
Rift valley fever								
Melioidosis								
Legionellosis		3		3	23	10	296	
Leptospirosis			1		2		2	
Rocky mountain spotted fever								

Category	Diseases	Tokyo					Japan	
		12th	13th	14th	15th	Cum 2015	15th	Cum 2015
V	Amebiasis	2	5	4	3	53	11	292
	Viral hepatitis(excluding hepatitis A and E)	1		1		9	4	54
	CRE infection	2	1	4	2	35	14	315
	Acute encephalitis(excluding JE and WNE)	2	1	3		21	4	181
	Cryptosporidiosis					2		5
	Creutzfeldt-Jakob disease	1		1		7		48
	Severe invasive streptococcal infections(TSLS)	3	3	2	3	26	9	161
	Acquired immunodeficiency syndrome (AIDS)	8	9	9	8	108	15	351
	Giardiasis		1			2	1	21
	Invasive <i>Haemophilus influenzae</i> disease		1			6	2	76
	Invasive meningococcal disease				1	4	3	12
	Invasive pneumococcal disease	7	7	5	9	103	39	771
	Varicella (limited to hospitalized case)	1				8	2	70
	Congenital rubella syndrome							
	Syphilis	10	21	16	34	211	47	517
	Disseminated cryptococcosis			1		3	2	37
	Tetanus		1			1		17
	Vancomycin-resistant <i>S. aureus</i> infection							
	Vancomycin-resistant Enterococcus infection						2	14
	Rubella	2	1	2		12	2	53
Measles				2	3	3	11	
MDRA infection							4	

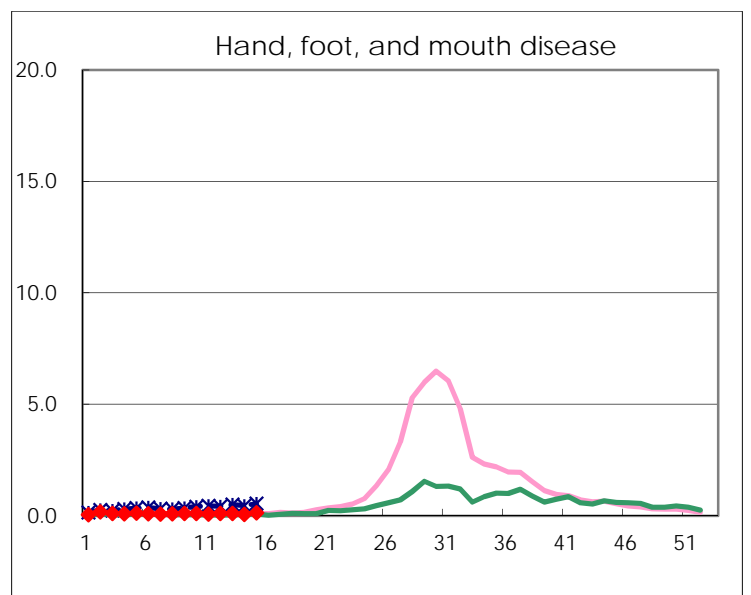
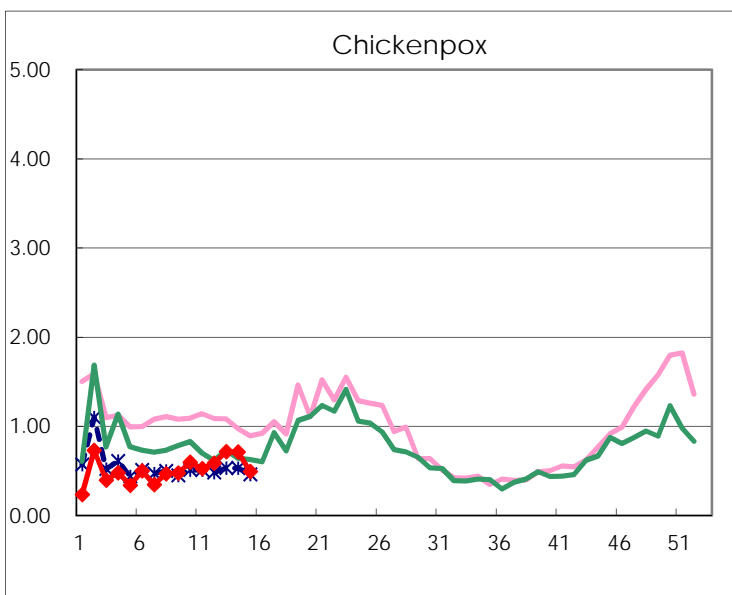
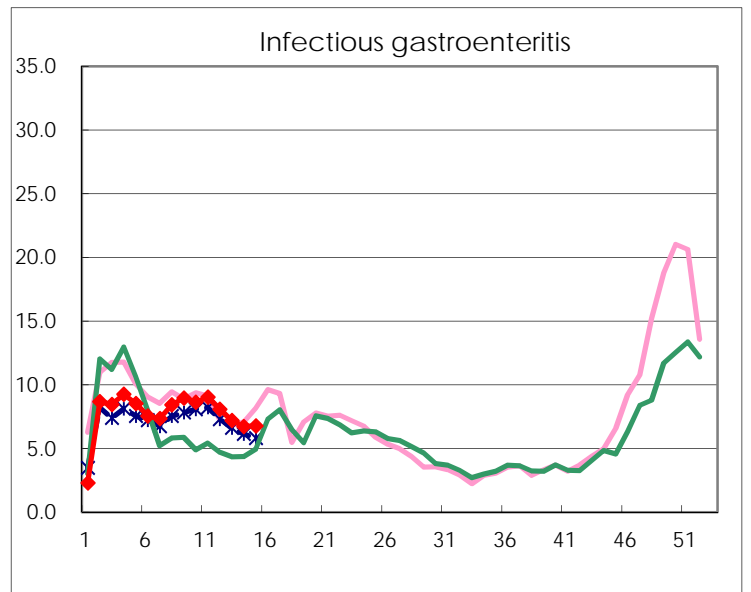
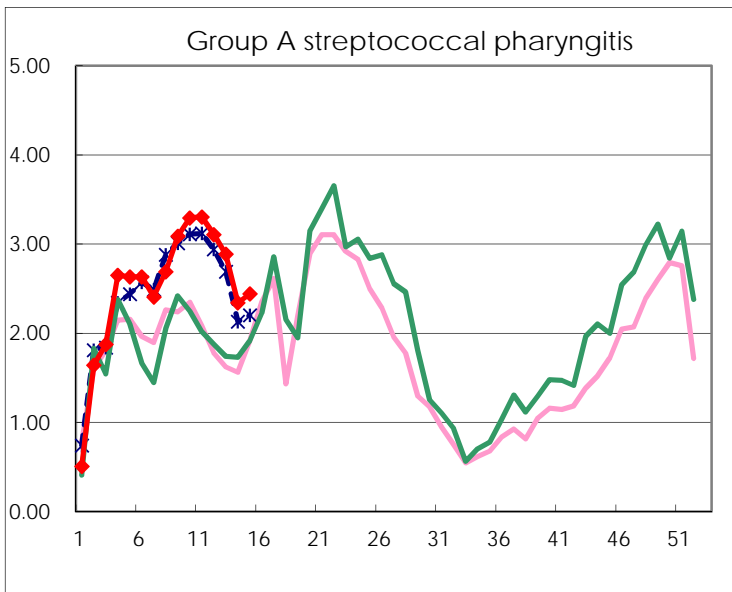
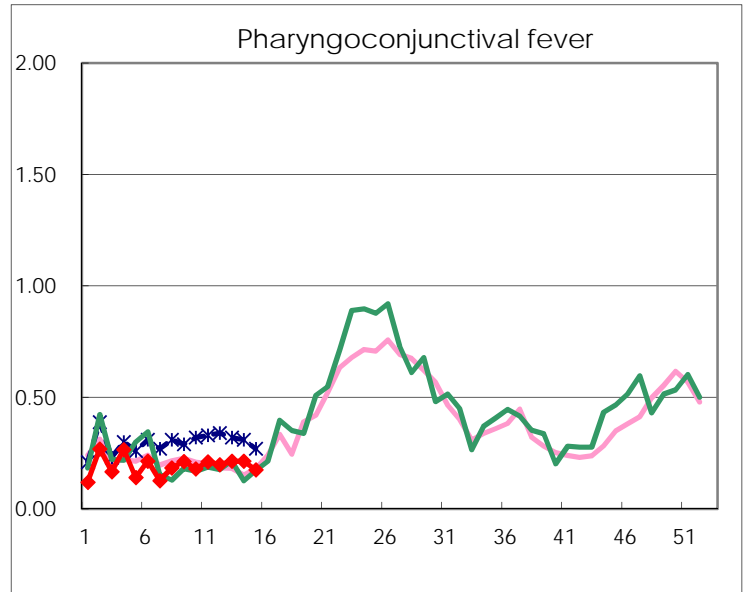
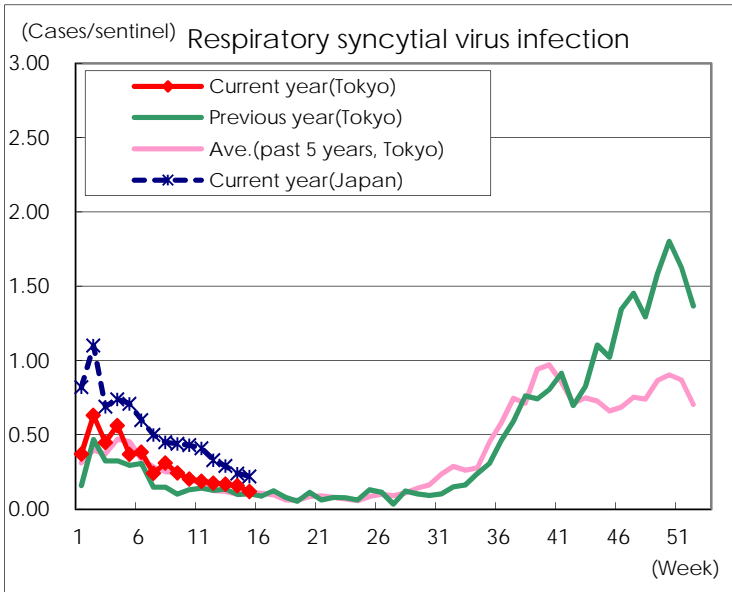
※ Designated infectious disease

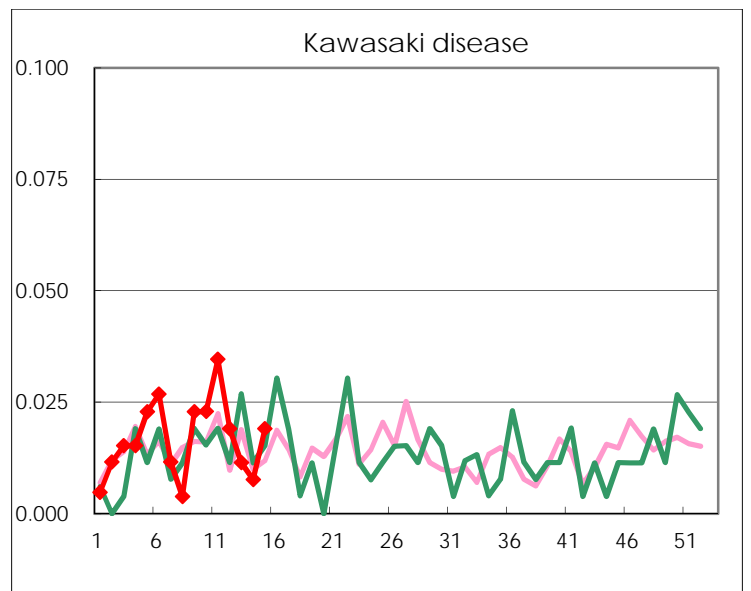
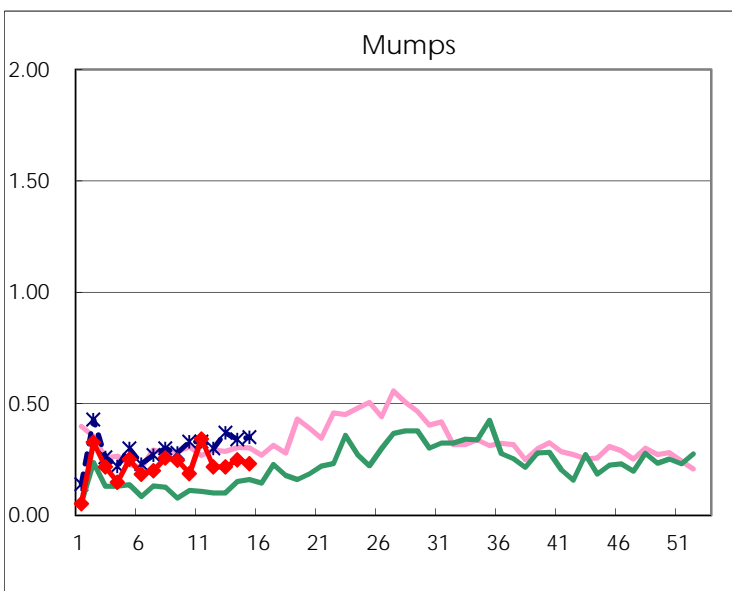
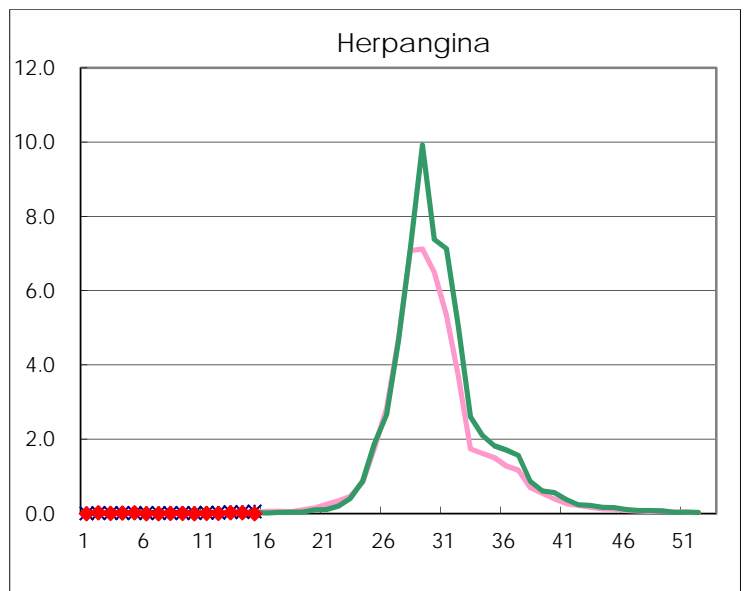
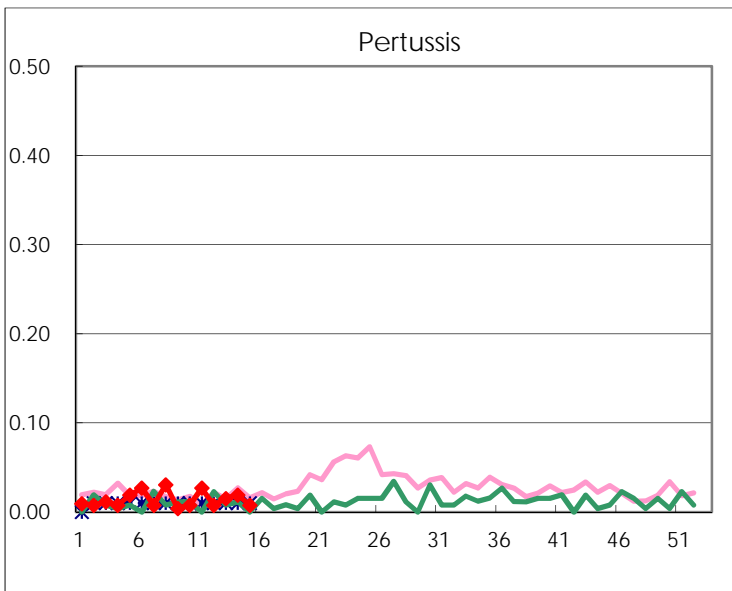
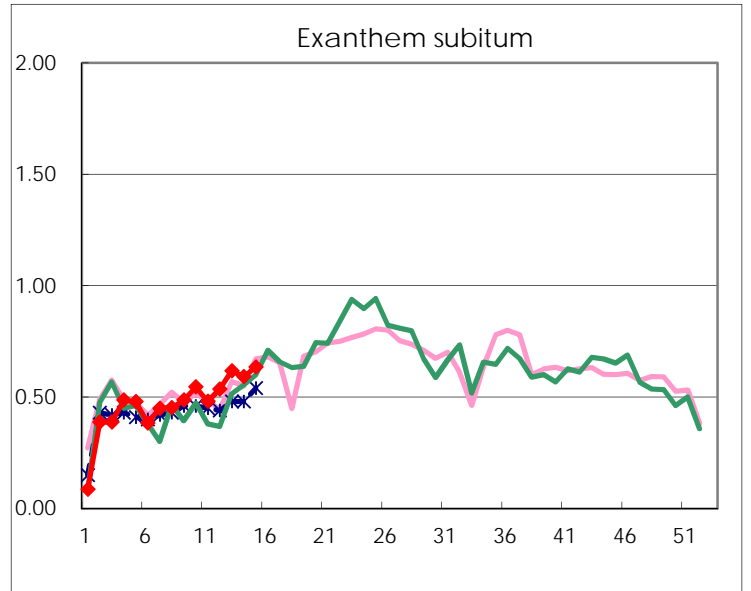
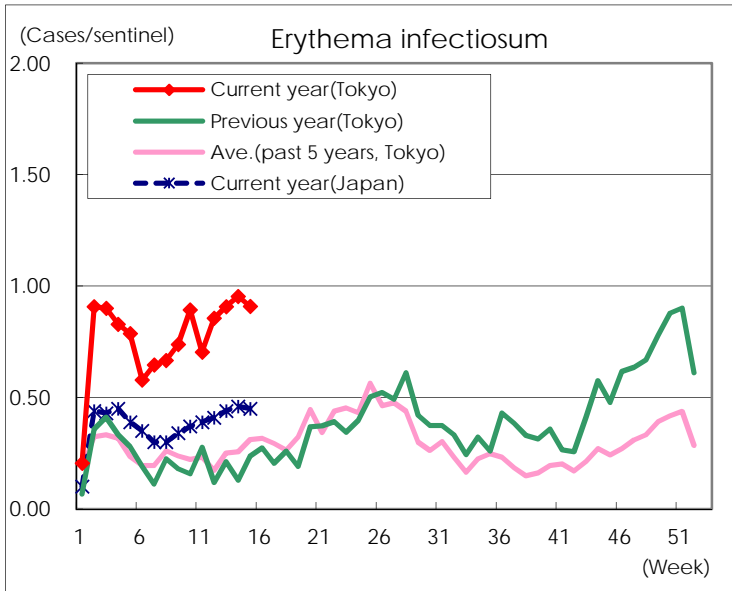
Number of patients with the diseases to be reported
by the designated clinics and hospitals

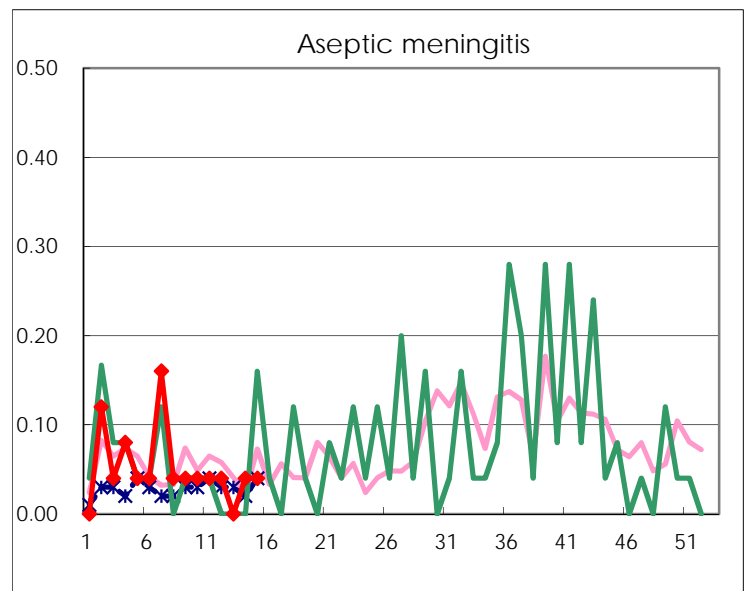
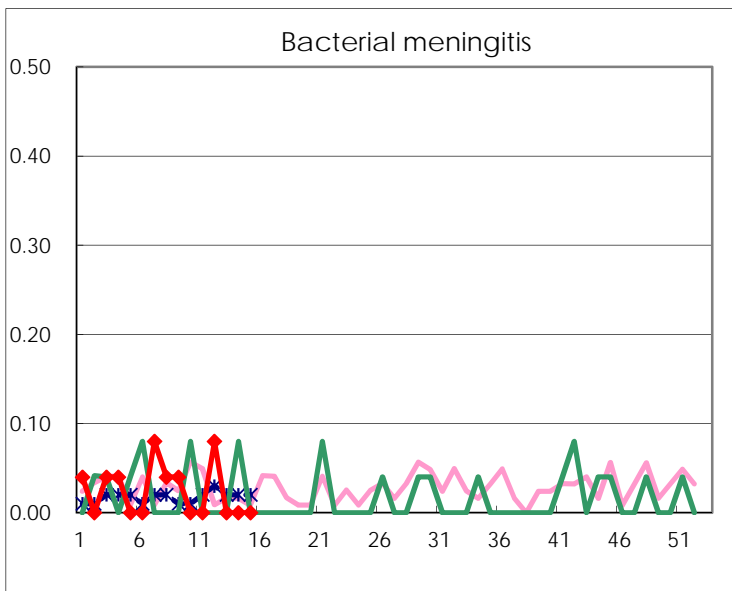
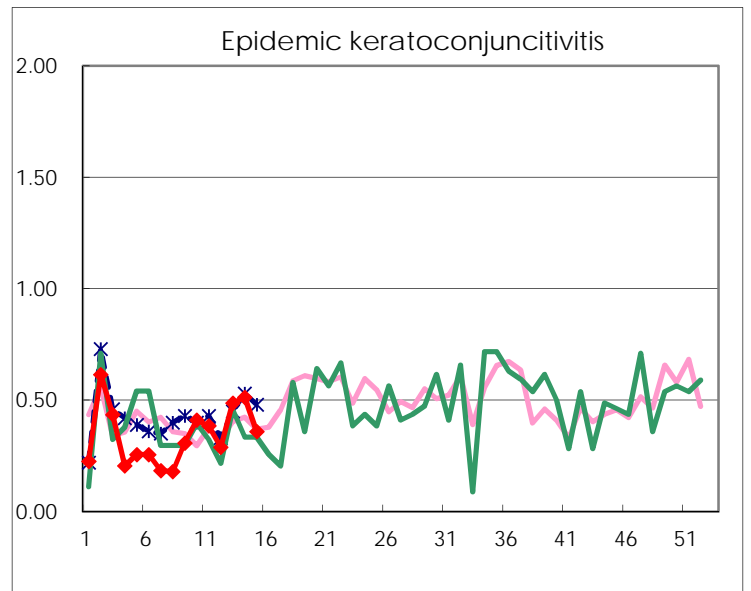
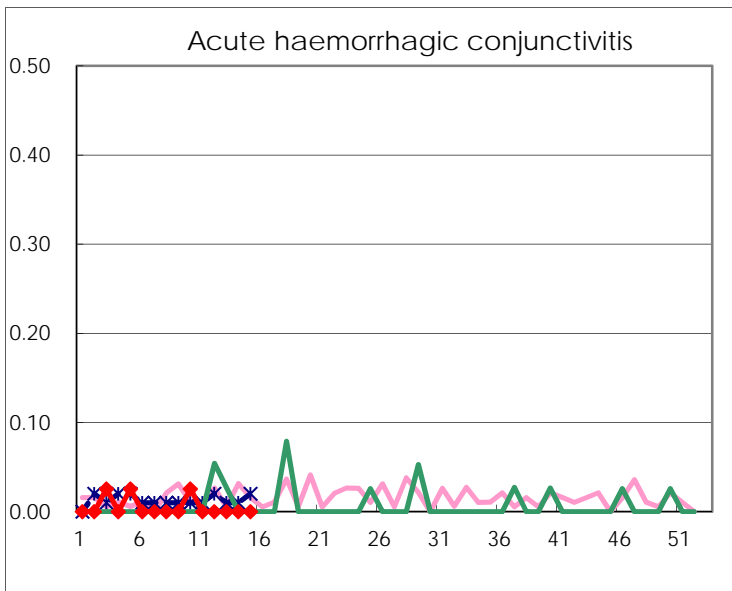
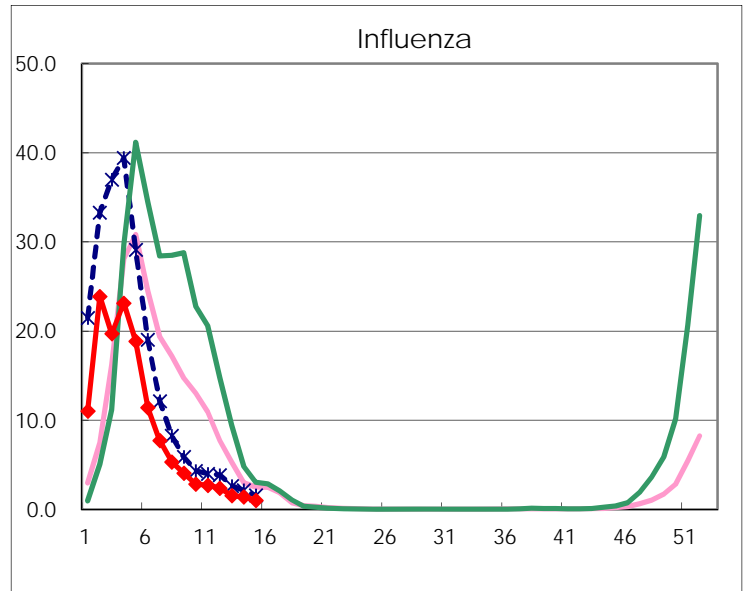
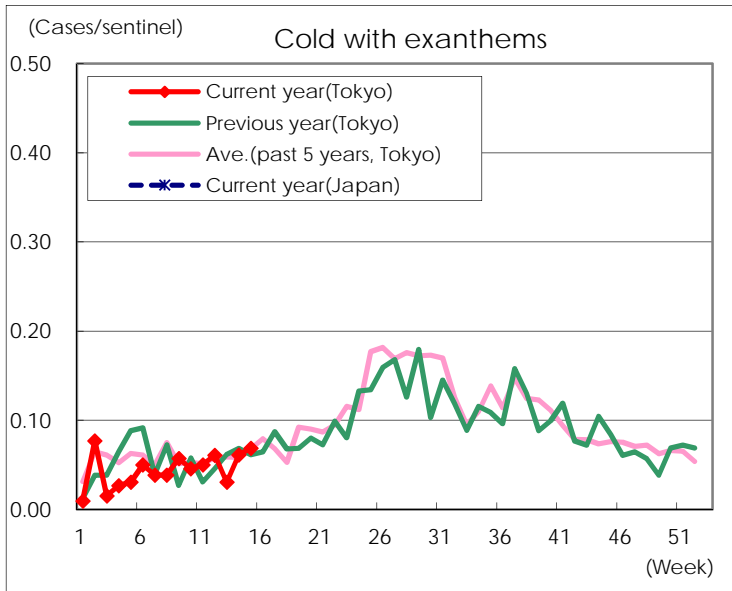
Diseases	Tokyo				
	12th	13th	14th	15th	/sentinel
Respiratory syncytial virus infection	46	44	41	31	0.12
Pharyngoconjunctival fever	52	56	56	46	0.17
Group A streptococcal pharyngitis	817	756	613	642	2.44
Infectious gastroenteritis	2,123	1,887	1,761	1,780	6.77
Chickenpox	154	187	186	129	0.49
Hand, foot, and mouth disease	28	26	17	35	0.13
Erythema infectiosum	225	238	250	239	0.91
Exanthem subitum	141	162	155	167	0.63
Pertussis	2	4	5	2	0.01
Herpangina	2	7	6	1	
Mumps	57	57	65	61	0.23
Kawasaki disease	5	3	2	5	0.02
Cold with exanthems	16	8	16	18	0.07
Influenza	984	636	580	417	1.01
Acute hemorrhagic conjunctivitis					
Epidemic keratoconjunctivitis	11	19	20	14	0.36
Bacterial meningitis	2				
Aseptic meningitis	1		1	1	0.04
Mycoplasma pneumonia	5	1		2	0.08
Chlamydial pneumonia (excluding psittacosis)	3	1			
Infectious gastroenteritis (only by Rotavirus)	3	6	4	5	0.20
Influenza-Associated Hospitalizations	14	3	15	5	0.20

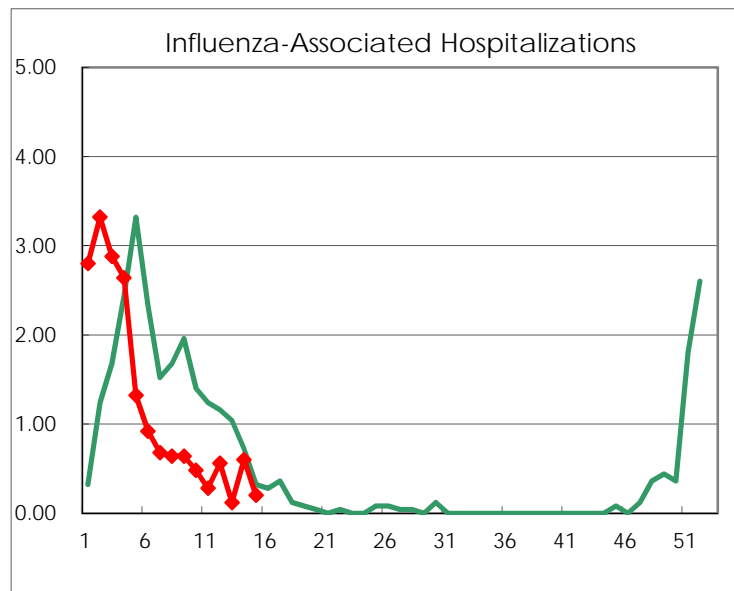
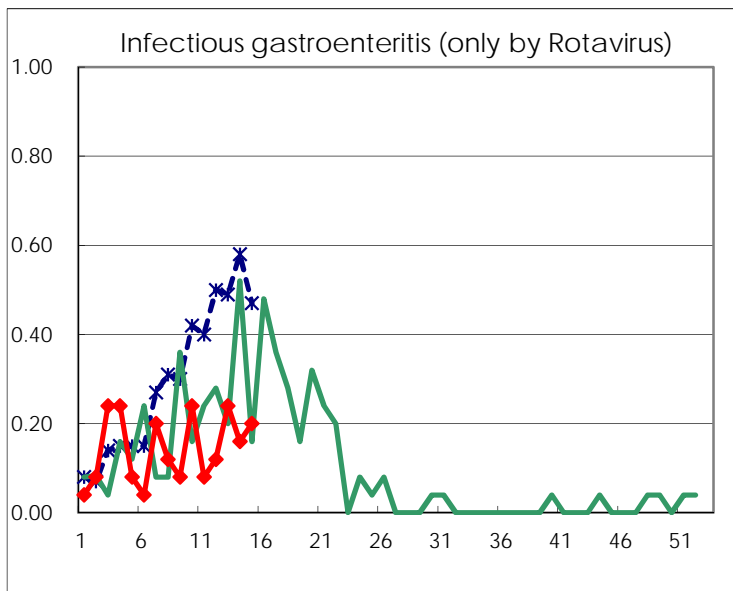
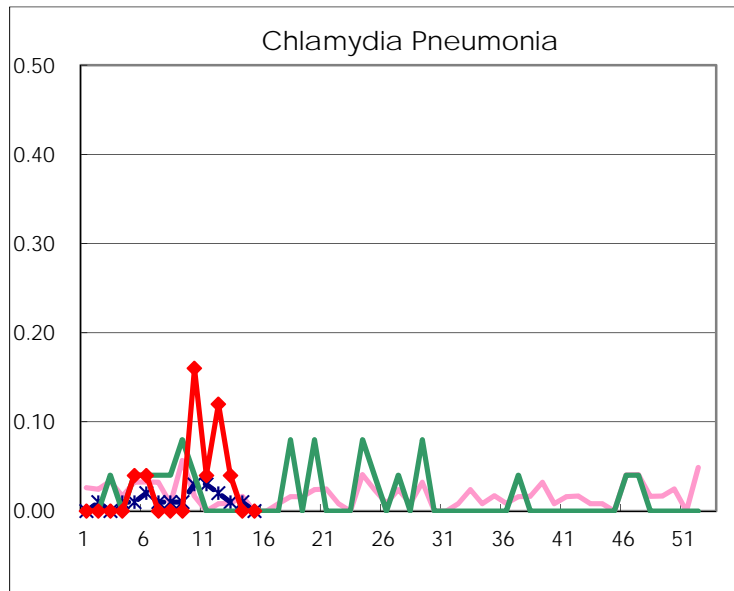
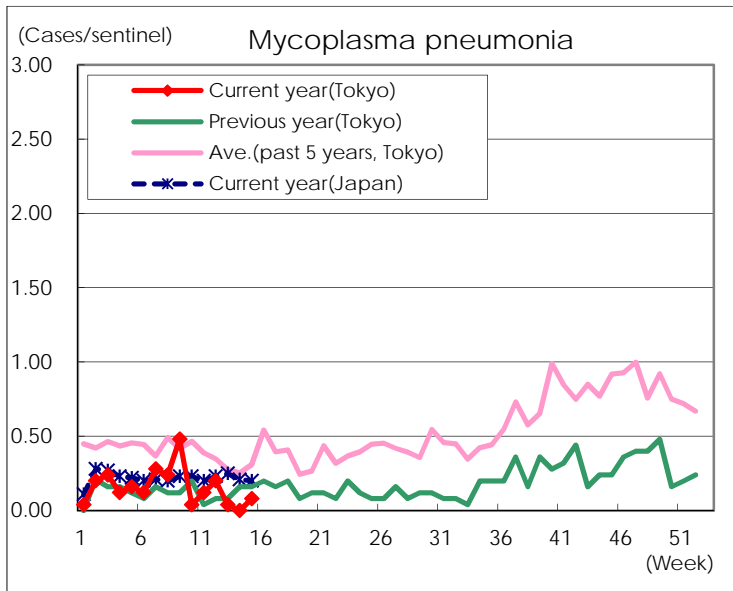
(Blank means 0.)

Disease Trend Graph (weekly reported cases per sentinelin comparison)









Number of sentinel facilities for weekly reporting		
Types of sentinels	Number of sentinels	Sentinels having reported
Pediatric	264	263
Influenza	419	411
Ophthalmic	39	39
Specially-designated	25	25