

**23 April 2015 / Number 16**

## Surveillance System in Tokyo, Japan

The infectious diseases which all physicians must report

All physicians must report to health centers the incidence of the diseases which are shown at page one. Health centers electronically report the individual cases to Tokyo Metropolitan Infectious Disease Surveillance Center.

The infectious diseases required to be reported by the sentinels

The numbers of patients who visit the sentinel clinics or hospitals during a week are reported to health centers in Tokyo. And they electronically report the numbers to Tokyo Metropolitan Infectious Disease Surveillance Center. We have about 500 sentinel clinics and hospitals in Tokyo.

Tokyo Metropolitan Institute of Public Health

TEL:81-3-3363-3213 FAX:81-3-5332-7365

e-mail:[www@tokyo-eiken.go.jp](mailto:www@tokyo-eiken.go.jp)

URL:[idsc.tokyo-eiken.go.jp/](http://idsc.tokyo-eiken.go.jp/)

---

Number of patients with the diseases which all physicians must report

Category	Diseases	Tokyo					Japan	
		13th	14th	15th	16th	Cum 2015	16th	Cum 2015
I	Ebola hemorrhagic fever							
	Crimean-Congo hemorrhagic fever							
	Smallpox							
	South American hemorrhagic fever							
	Plague							
	Marburg disease							
	Lassa fever							
II	Acute poliomyelitis							
	Tuberculosis	67	65	83	64	1,036	317	6,702
	Diphtheria							
	Severe Acute Respiratory Syndrome(SARS)							
	Middle East Respiratory Syndrome (MERS)							
	Avian influenza H5N1							
	Avian influenza H7N9							
III	Cholera							3
	Shigellosis	3			1	12		36
	Enterohemorrhagic Escherichia coli infection		1		2	18	18	275
	Typhoid fever	1	1	1	1	6		17
	Paratyphoid fever					2		12
IV	Hepatitis E		3		1	11	4	59
	West Nile fever							
	Hepatitis A	2		1	3	12	4	93
	Echinococcosis					1		5
	Yellow fever							
	Psittacosis							3
	Omsk hemorrhagic fever							
	Relapsing fever							
	Kyasanur forest disease							
	Q fever							
	Rabies							
	Coccidioidomycosis							1
	Monkeypox							
	Severe Fever with Thrombocytopenia Syndrome							1
	Hemorrhagic fever with renal syndrome							
	Western equine encephalitis							
	Tick-borne encephalitis							
	Anthrax							
	Chikungunya fever					2		3
	Scrub typhus(Tsutsugamushi disease)			1		1		23
	Dengue fever	1	4		4	22	4	71
	Eastern equine encephalitis							
	Avian influenza (excluding H5N1 and H7N9)							
	Nipah virus infection							
	Japanese spotted fever							2
	Japanese encephalitis							
	Hantavirus pulmonary syndrome							
	Herpes B virus infection							
	Glanders							
	Brucellosis							2
	Venezuelan equine encephalitis							
	Hendra virus infection							
Epidemic typhus								
Botulism								
Malaria				1	3	1	5	
Tularemia								
Lyme disease								
Lyssavirus infection(excluding rabies)								
Rift valley fever								
Melioidosis								
Legionellosis	3		3	2	25	16	315	
Leptospirosis		1			2		2	
Rocky mountain spotted fever								

Category	Diseases	Tokyo					Japan	
		13th	14th	15th	16th	Cum 2015	16th	Cum 2015
V	Amebiasis	5	4	3	3	56	6	301
	Viral hepatitis(excluding hepatitis A and E)		1		4	13	5	61
	CRE infection	1	4	2	4	39	11	341
	Acute encephalitis(excluding JE and WNE)	1	3			21	3	187
	Cryptosporidiosis					2		5
	Creutzfeldt-Jakob disease		1			7		48
	Severe invasive streptococcal infections(TSLS)	3	2	3	2	28	8	174
	Acquired immunodeficiency syndrome (AIDS)	9	9	9	15	124	17	386
	Giardiasis	1			2	4	3	24
	Invasive <i>Haemophilus influenzae</i> disease	1			1	7	2	78
	Invasive meningococcal disease			1		4		14
	Invasive pneumococcal disease	7	5	9	11	114	44	841
	Varicella (limited to hospitalized case)				1	9	2	76
	Congenital rubella syndrome							
	Syphilis	21	16	34	22	233	24	561
	Disseminated cryptococcosis		1			3		37
	Tetanus	1				1	1	18
	Vancomycin-resistant <i>S. aureus</i> infection							
	Vancomycin-resistant Enterococcus infection						2	16
Rubella	1	2		1	13	3	57	
Measles			2	1	4	1	14	
MDRA infection				1	1	1	5	

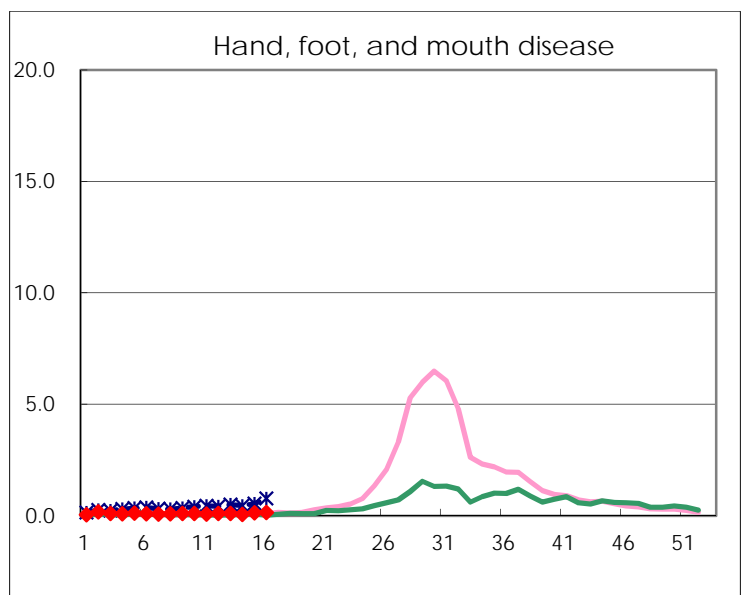
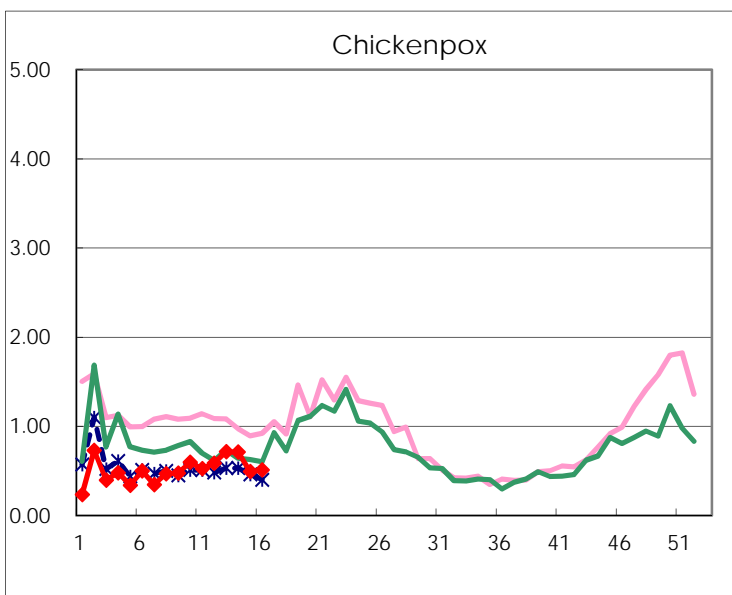
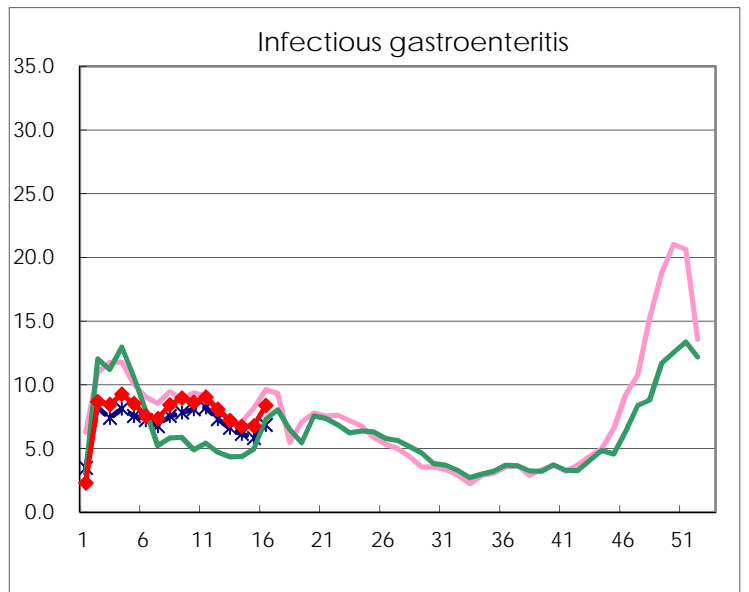
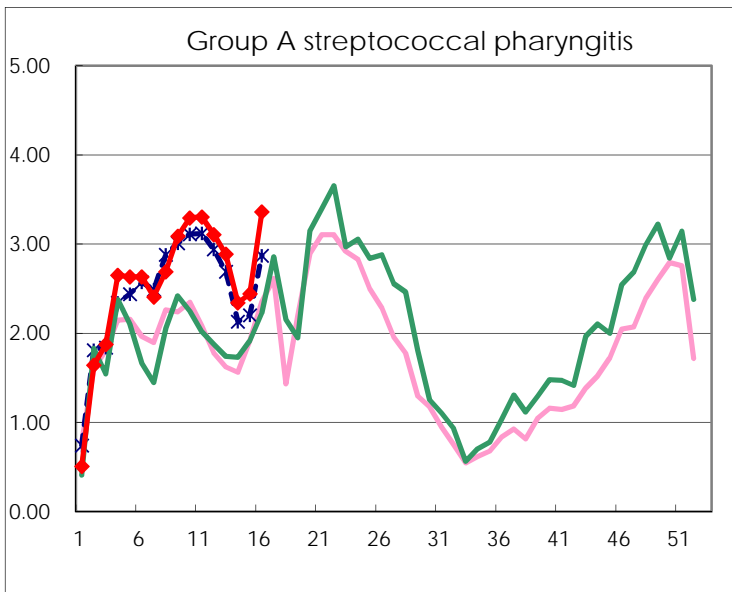
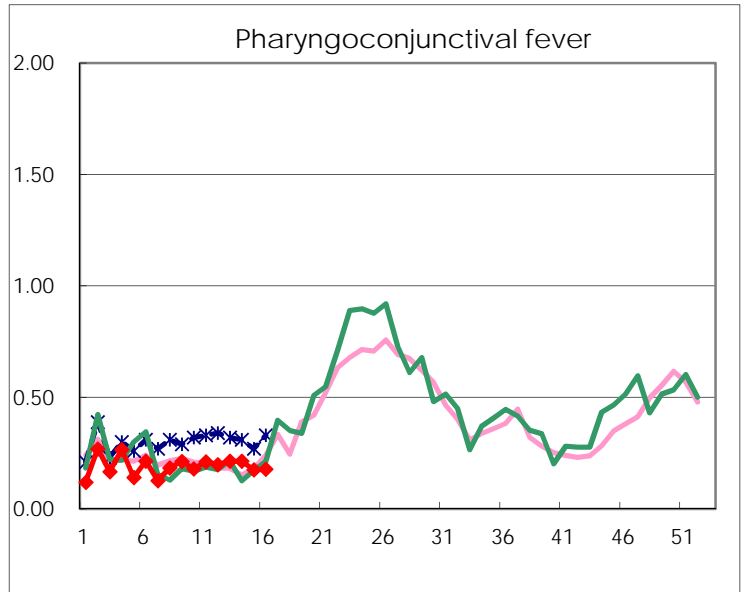
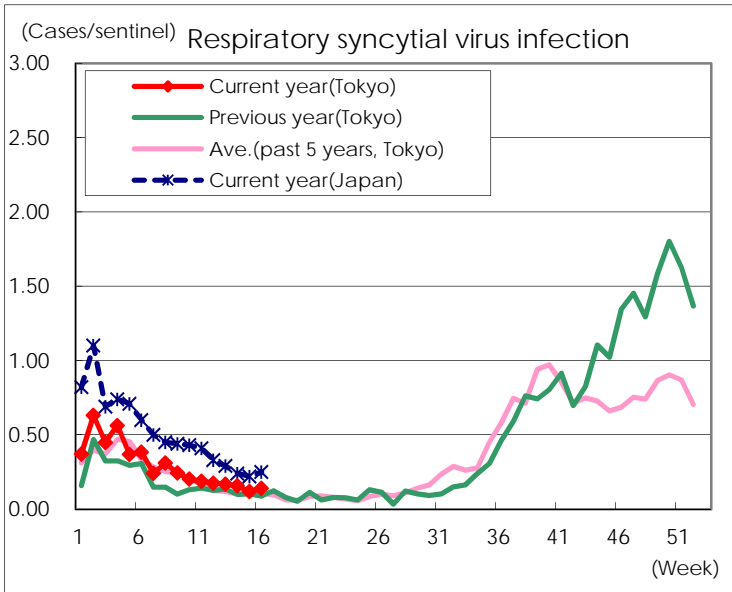
※ Designated infectious disease

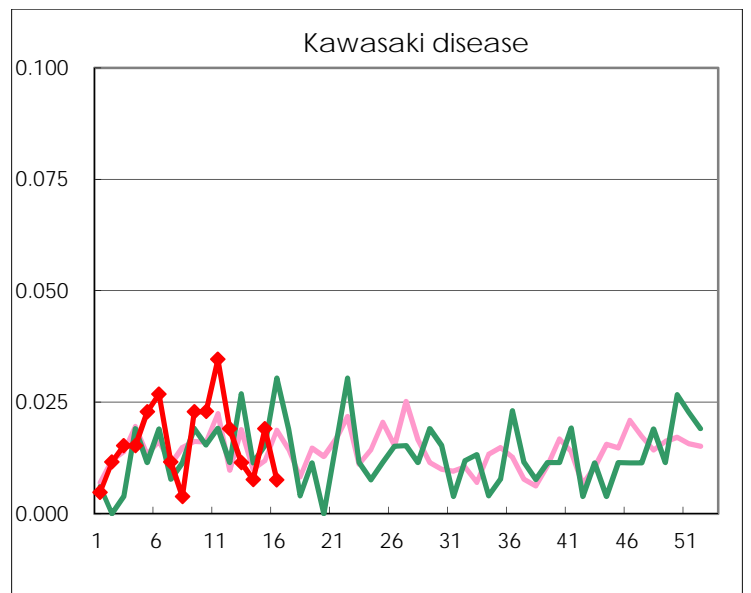
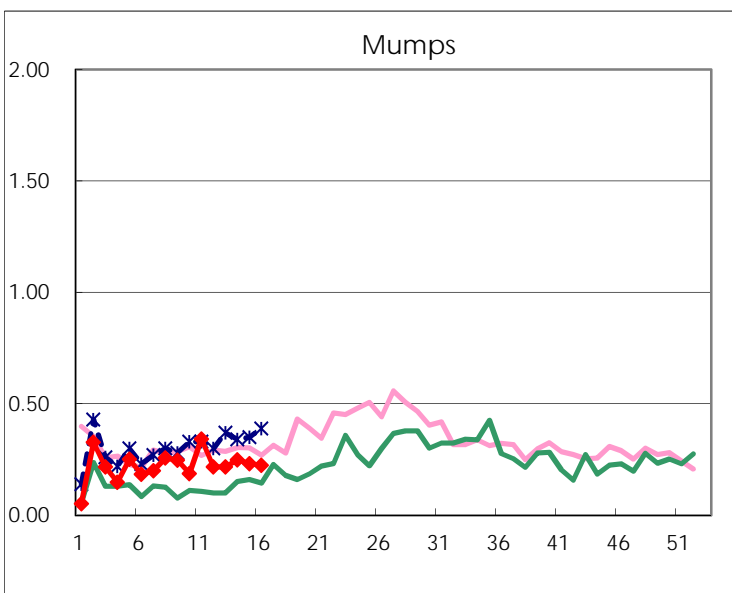
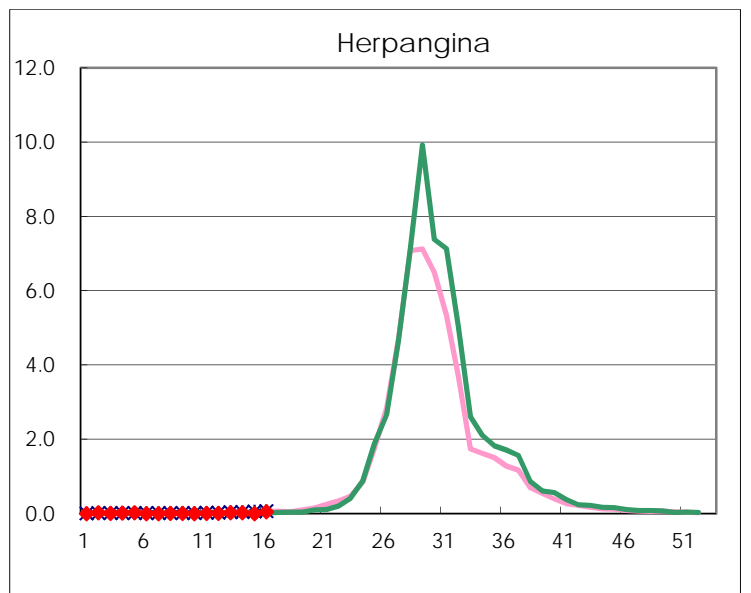
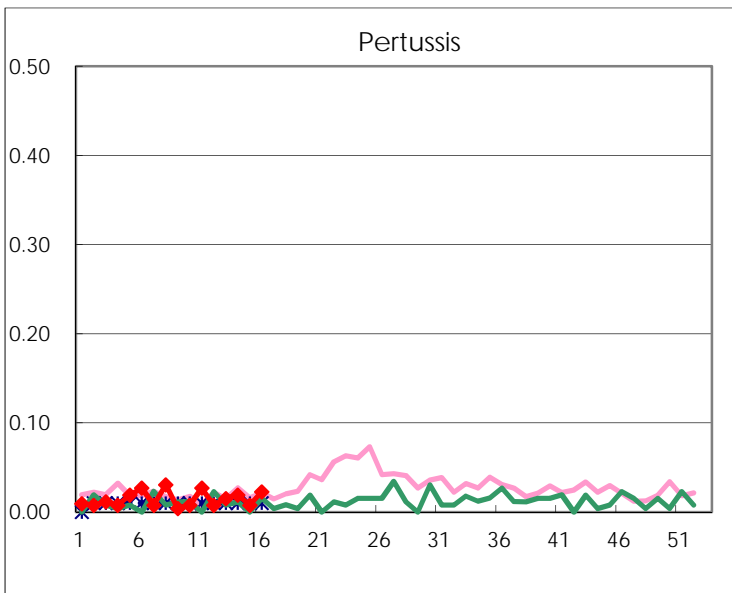
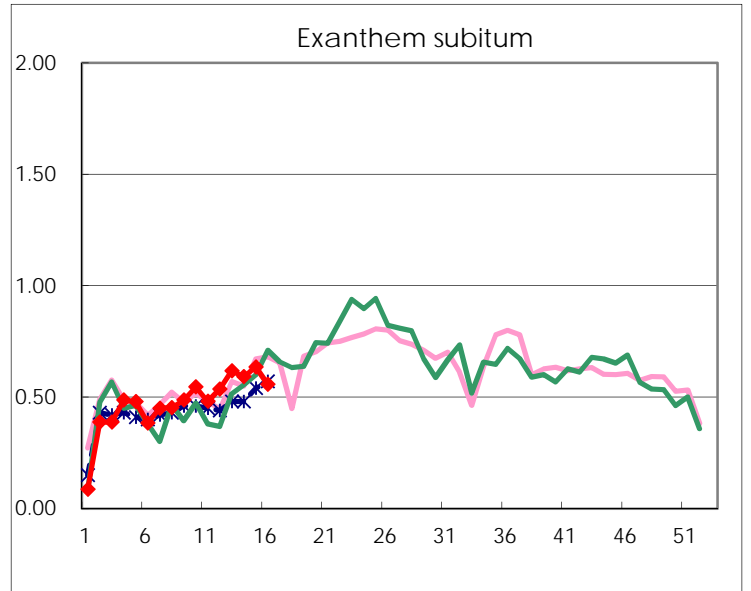
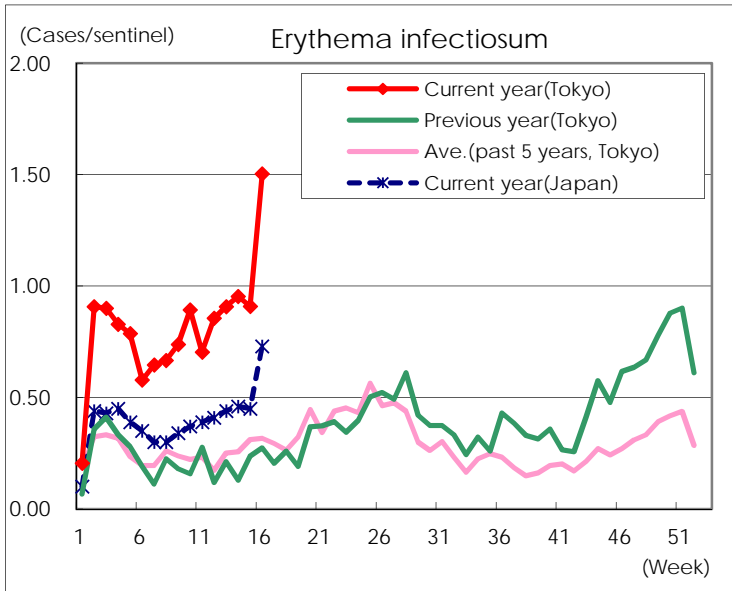
Number of patients with the diseases to be reported  
by the designated clinics and hospitals

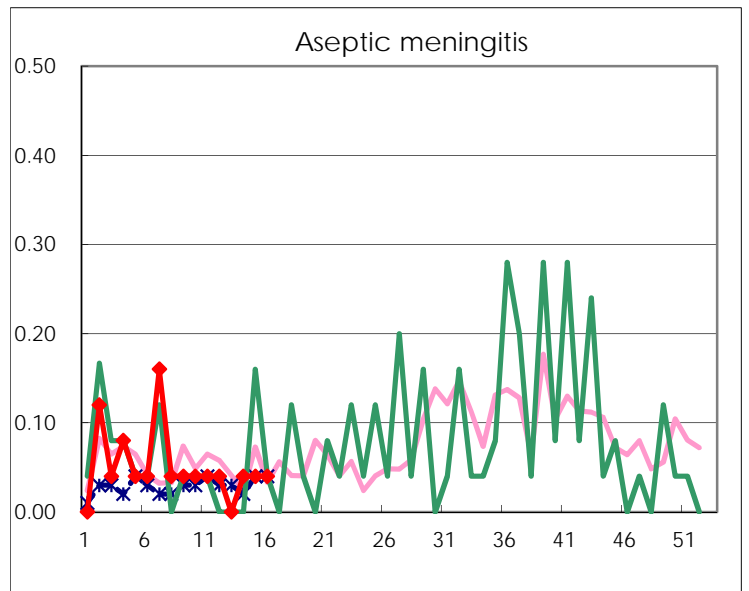
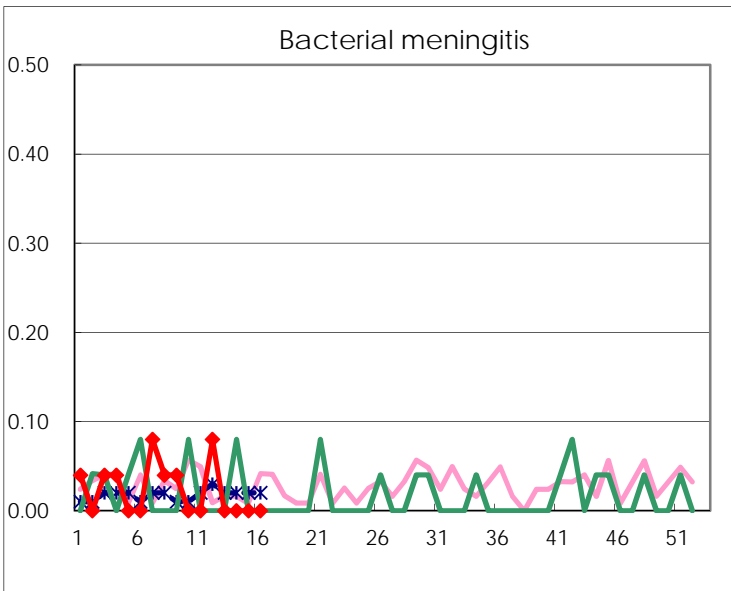
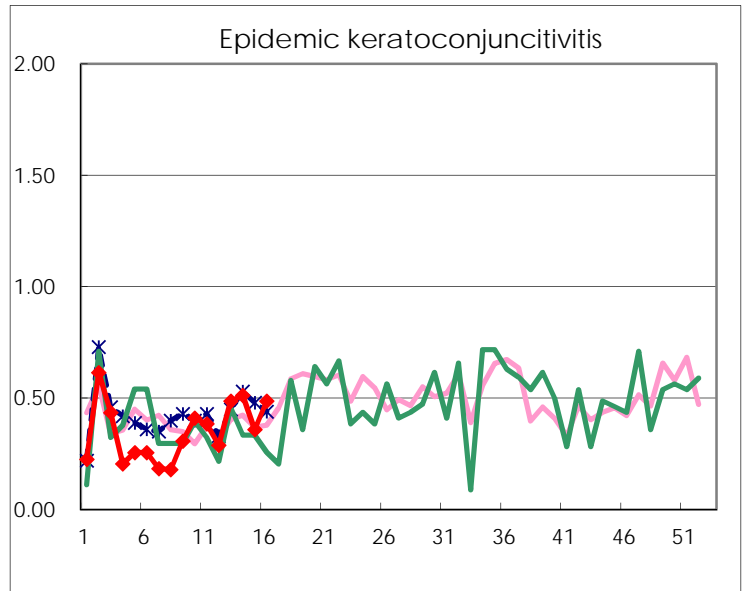
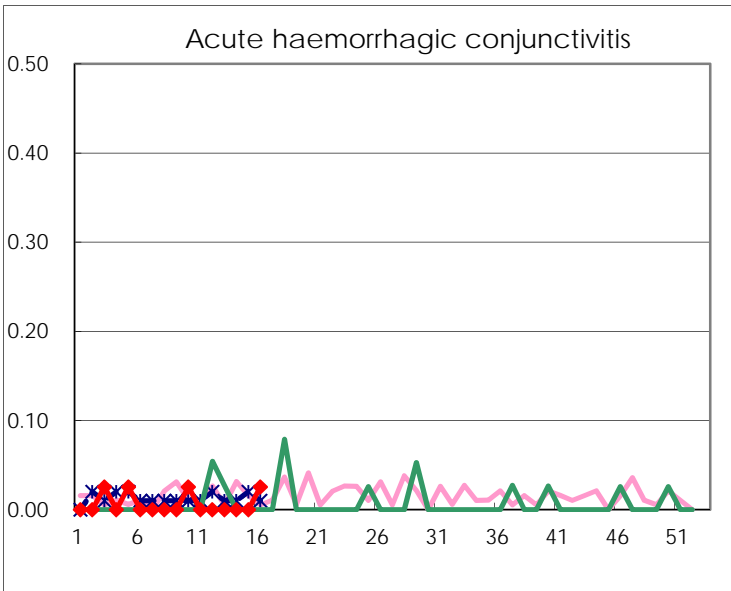
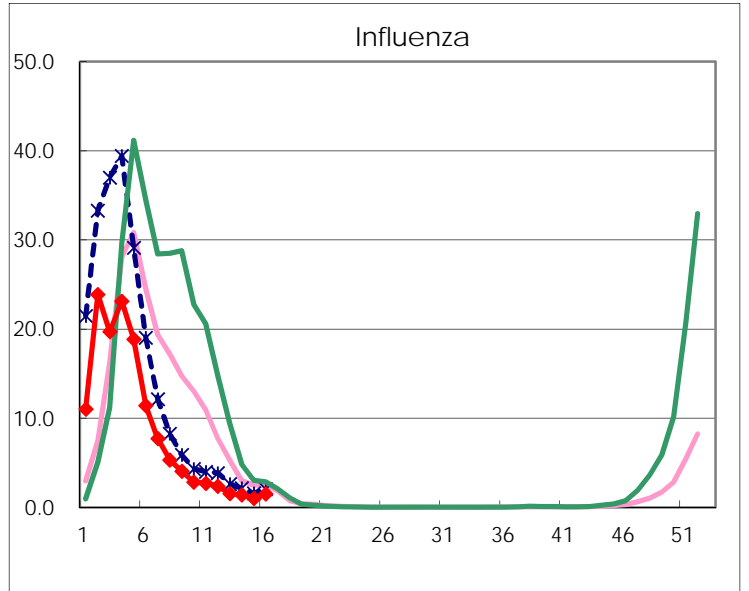
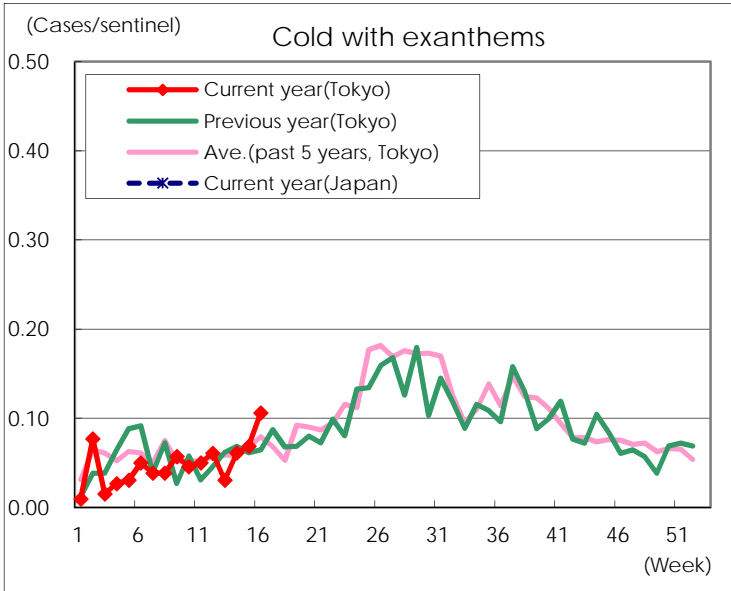
Diseases	Tokyo				
	13th	14th	15th	16th	/sentinel
Respiratory syncytial virus infection	44	41	31	37	0.14
Pharyngoconjunctival fever	56	56	46	47	0.18
Group A streptococcal pharyngitis	756	613	642	887	3.36
Infectious gastroenteritis	1,887	1,761	1,780	2,208	8.36
Chickenpox	187	186	129	135	0.51
Hand, foot, and mouth disease	26	17	35	38	0.14
Erythema infectiosum	238	250	239	397	1.50
Exanthem subitum	162	155	167	147	0.56
Pertussis	4	5	2	6	0.02
Herpangina	7	6	1	13	0.05
Mumps	57	65	61	59	0.22
Kawasaki disease	3	2	5	2	0.01
Cold with exanthems	8	16	18	28	0.11
Influenza	636	580	417	618	1.50
Acute hemorrhagic conjunctivitis				1	0.03
Epidemic keratoconjunctivitis	19	20	14	19	0.49
Bacterial meningitis					
Aseptic meningitis		1	1	1	0.04
Mycoplasma pneumonia	1		2	6	0.24
Chlamydial pneumonia (excluding psittacosis)	1				
Infectious gastroenteritis (only by Rotavirus)	6	4	5	5	0.20
Influenza-Associated Hospitalizations	3	15	6		

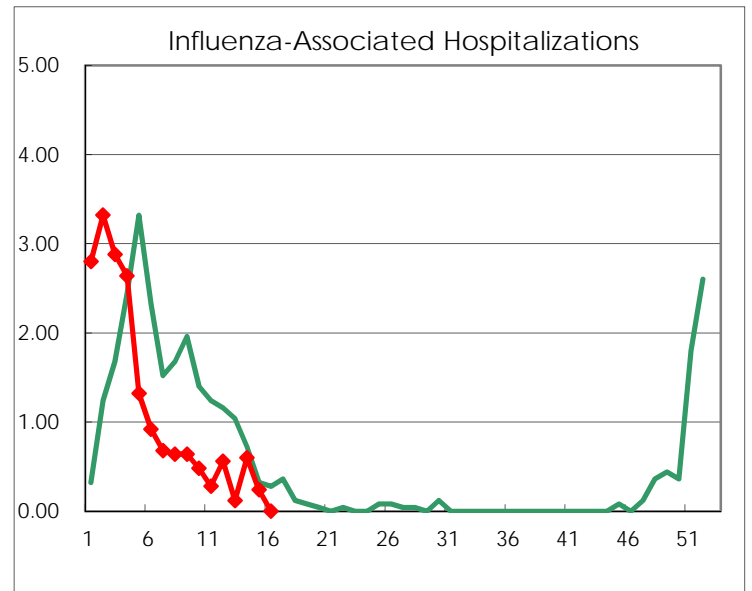
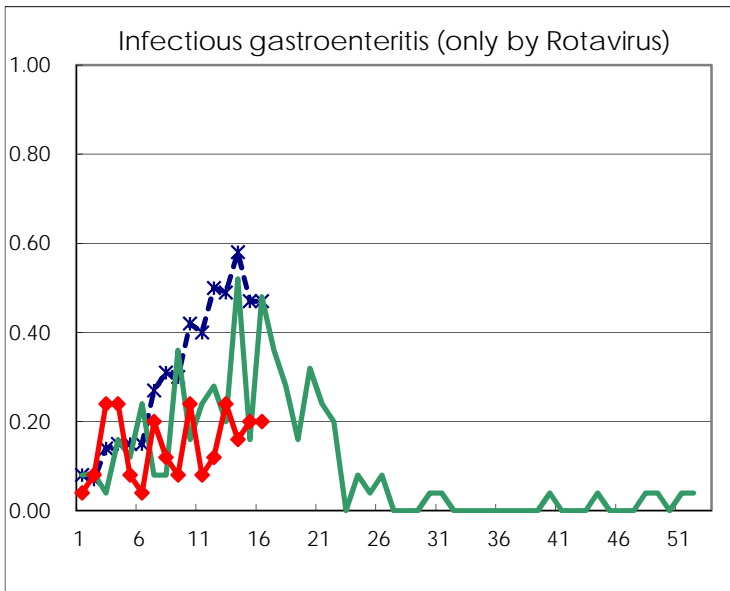
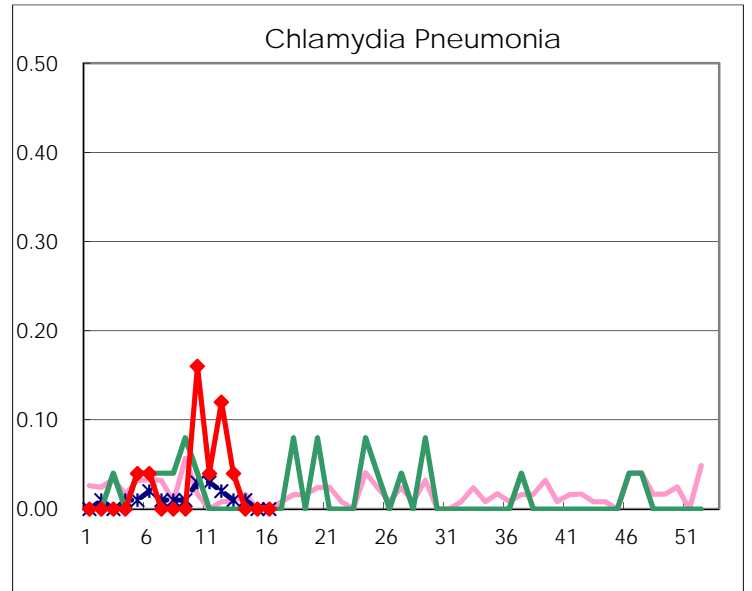
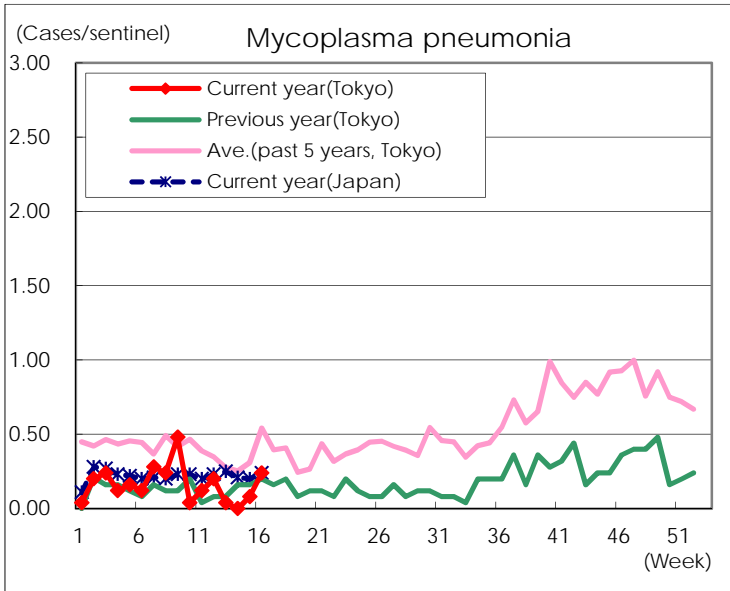
( Blank means 0. )

# Disease Trend Graph (weekly reported cases per sentinelin comparison)









Number of sentinel facilities for weekly reporting		
Types of sentinels	Number of sentinels	Sentinels having reported
Pediatric	264	264
Influenza	419	413
Ophthalmic	39	39
Specially-designated	25	25