

1 May 2015 / Number 17

Surveillance System in Tokyo, Japan

The infectious diseases which all physicians must report

All physicians must report to health centers the incidence of the diseases which are shown at page one. Health centers electronically report the individual cases to Tokyo Metropolitan Infectious Disease Surveillance Center.

The infectious diseases required to be reported by the sentinels

The numbers of patients who visit the sentinel clinics or hospitals during a week are reported to health centers in Tokyo. And they electronically report the numbers to Tokyo Metropolitan Infectious Disease Surveillance Center. We have about 500 sentinel clinics and hospitals in Tokyo.

Tokyo Metropolitan Institute of Public Health

TEL:81-3-3363-3213 FAX:81-3-5332-7365

e-mail:www@tokyo-eiken.go.jp

URL:idsc.tokyo-eiken.go.jp/

Number of patients with the diseases which all physicians must report

Category	Diseases	Tokyo					Japan	
		14th	15th	16th	17th	Cum 2015	17th	Cum 2015
I	Ebola hemorrhagic fever							
	Crimean-Congo hemorrhagic fever							
	Smallpox							
	South American hemorrhagic fever							
	Plague							
	Marburg disease							
	Lassa fever							
II	Acute poliomyelitis							
	Tuberculosis	65	84	67	68	1,108	322	7,185
	Diphtheria							
	Severe Acute Respiratory Syndrome(SARS)							
	Middle East Respiratory Syndrome (MERS)							
	Avian influenza H5N1							
	Avian influenza H7N9							
III	Cholera							3
	Shigellosis			1	3	15	4	40
	Enterohemorrhagic Escherichia coli infection	1		2		18	33	311
	Typhoid fever	1	1	1		6		17
	Paratyphoid fever				1	3	1	13
IV	Hepatitis E	3		1	1	12	3	63
	West Nile fever							
	Hepatitis A		1	3	1	13	2	97
	Echinococcosis					1		5
	Yellow fever							
	Psittacosis							3
	Omsk hemorrhagic fever							
	Relapsing fever							
	Kyasanur forest disease							
	Q fever							
	Rabies							
	Coccidioidomycosis							1
	Monkeypox							
	Severe Fever with Thrombocytopenia Syndrome						1	2
	Hemorrhagic fever with renal syndrome							
	Western equine encephalitis							
	Tick-borne encephalitis							
	Anthrax							
	Chikungunya fever					2		4
	Scrub typhus(Tsutsugamushi disease)		1			1	2	27
	Dengue fever	4		4		22	2	74
	Eastern equine encephalitis							
	Avian influenza (excluding H5N1 and H7N9)							
	Nipah virus infection							
	Japanese spotted fever							6
	Japanese encephalitis							
	Hantavirus pulmonary syndrome							
	Herpes B virus infection							
	Glanders							
	Brucellosis							2
	Venezuelan equine encephalitis							
	Hendra virus infection							
	Epidemic typhus							
Botulism								
Malaria			1		3	1	6	
Tularemia								
Lyme disease								
Lyssavirus infection(excluding rabies)								
Rift valley fever								
Melioidosis								
Legionellosis		3	2	3	28	20	342	
Leptospirosis	1			1	3	1	3	
Rocky mountain spotted fever								

Category	Diseases	Tokyo					Japan	
		14th	15th	16th	17th	Cum 2015	17th	Cum 2015
V	Amebiasis	4	3	3	3	59	11	322
	Viral hepatitis(excluding hepatitis A and E)	1		4	2	15	2	64
	CRE infection	4	2	4	5	44	21	372
	Acute encephalitis(excluding JE and WNE)	3				21	5	193
	Cryptosporidiosis					2		5
	Creutzfeldt-Jakob disease	1			1	8	5	54
	Severe invasive streptococcal infections(TSLS)	2	3	2		28	3	179
	Acquired immunodeficiency syndrome (AIDS)	9	9	15	10	134	14	418
	Giardiasis			2	1	5	2	26
	Invasive <i>Haemophilus influenzae</i> disease			1	2	9	6	87
	Invasive meningococcal disease		1			4		14
	Invasive pneumococcal disease	5	9	11	4	118	32	887
	Varicella (limited to hospitalized case)			1	2	11	3	85
	Congenital rubella syndrome							
	Syphilis	16	34	24	21	256	35	615
	Disseminated cryptococcosis	1				3	1	40
	Tetanus					1	1	20
	Vancomycin-resistant <i>S. aureus</i> infection							
	Vancomycin-resistant Enterococcus infection							16
Rubella	2		1	1	14	7	65	
Measles		2	1	1	5	2	16	
MDRA infection			1		1	1	6	

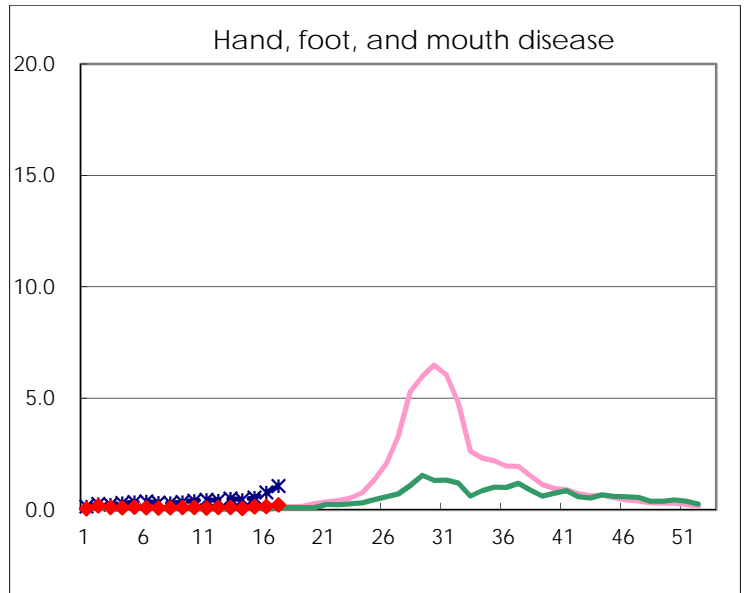
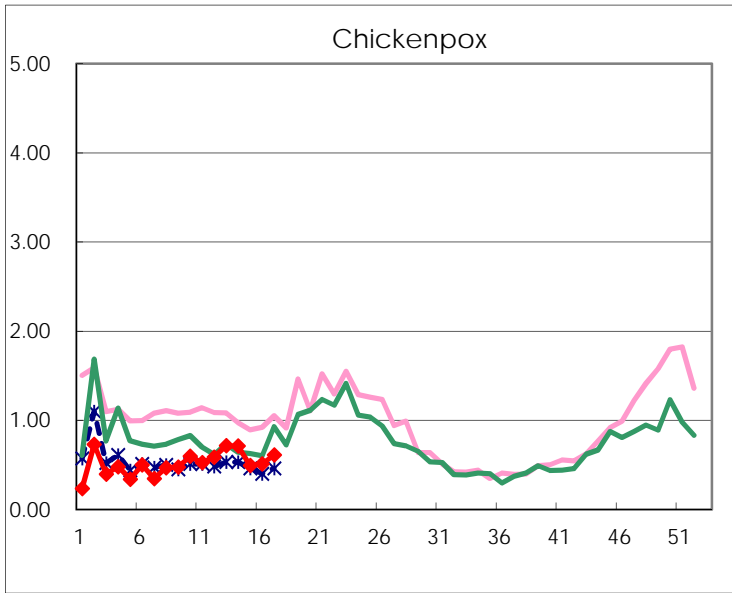
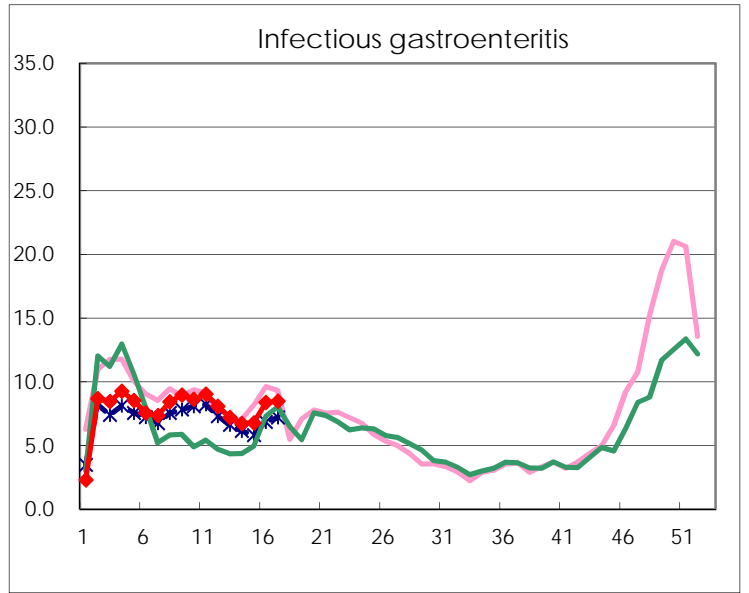
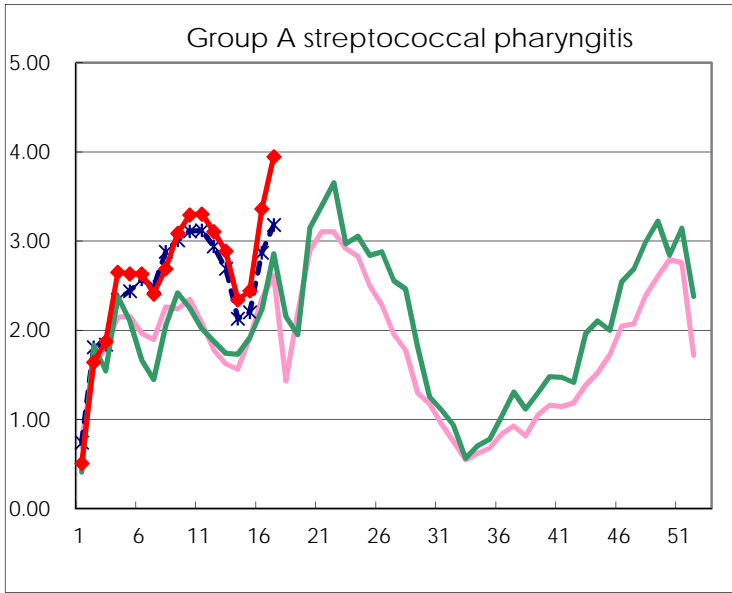
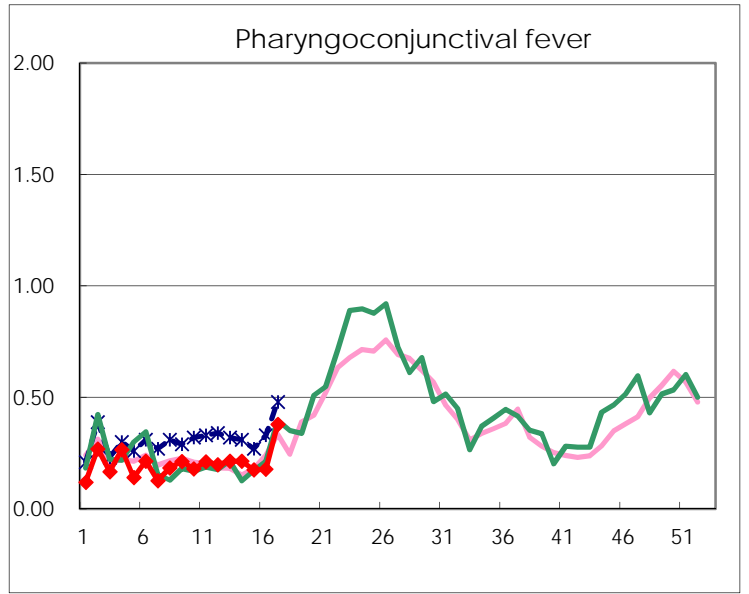
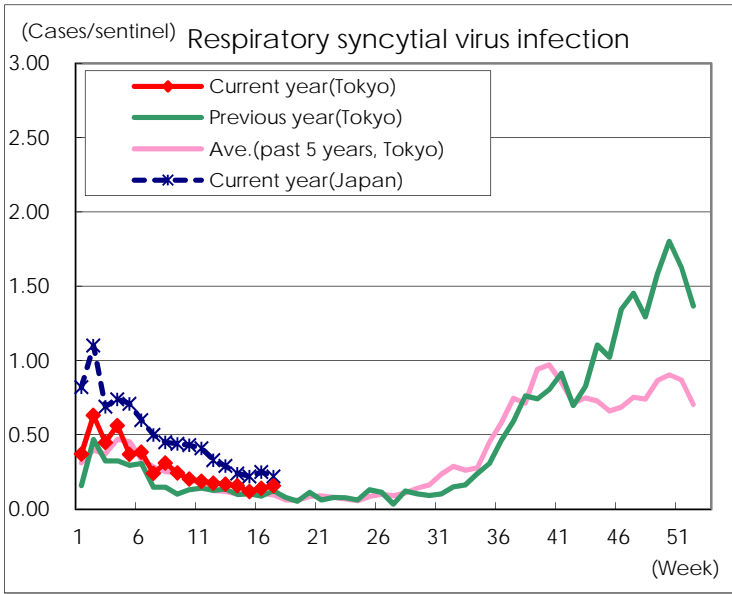
※ Designated infectious disease

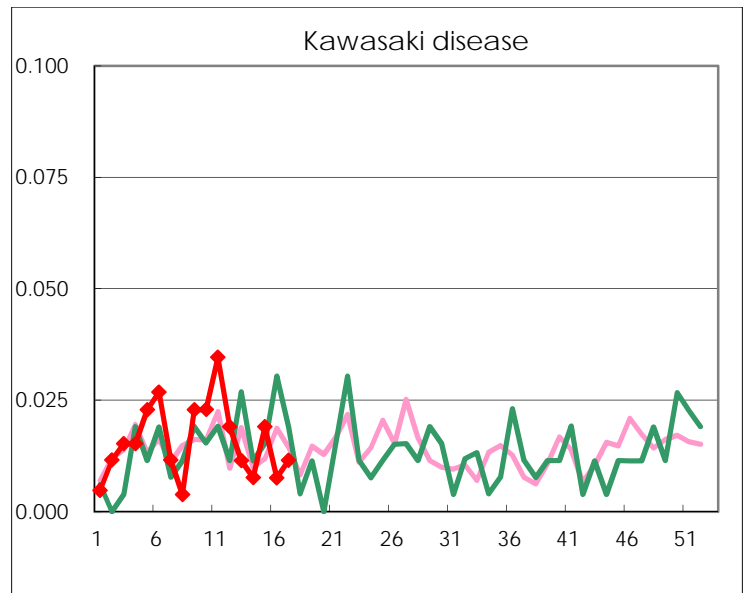
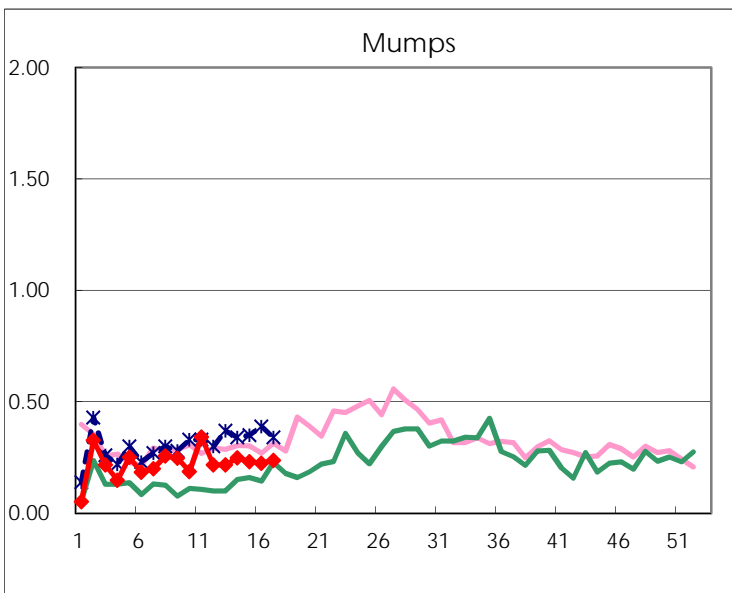
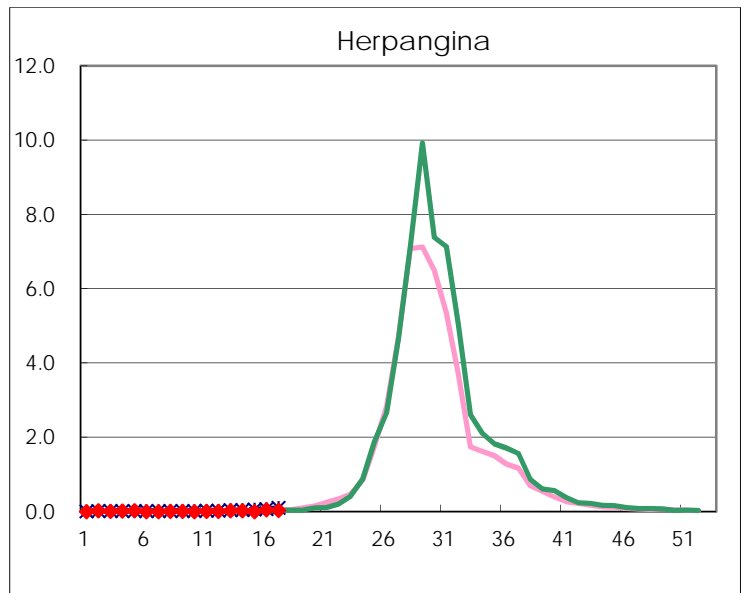
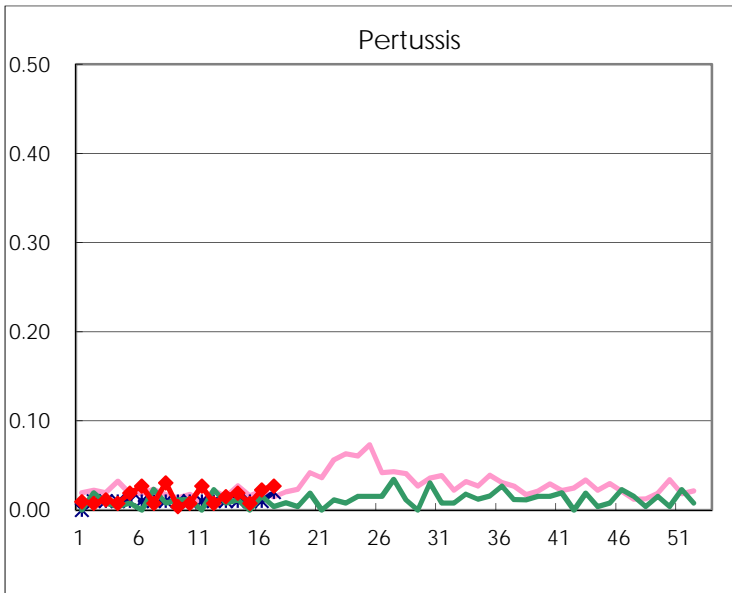
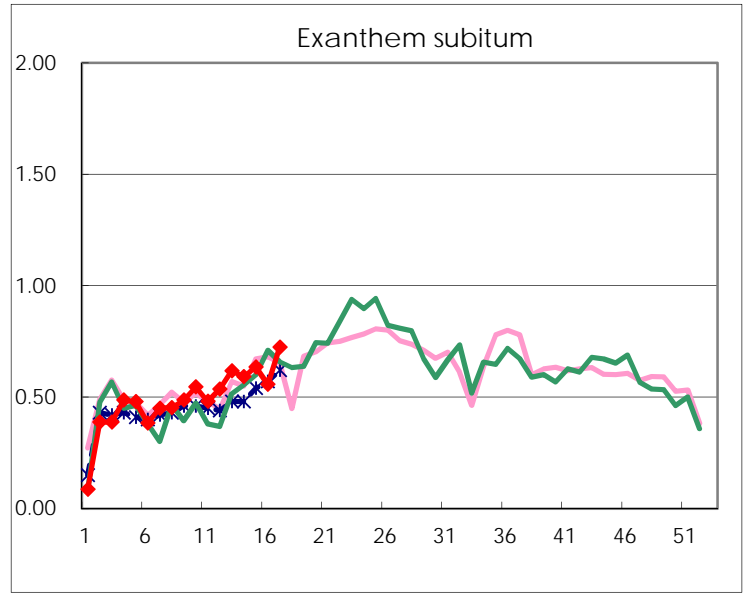
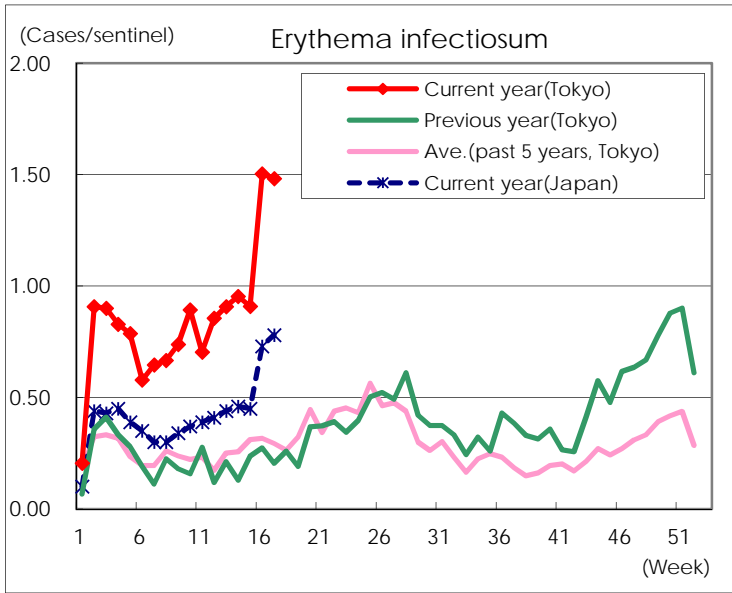
Number of patients with the diseases to be reported
by the designated clinics and hospitals

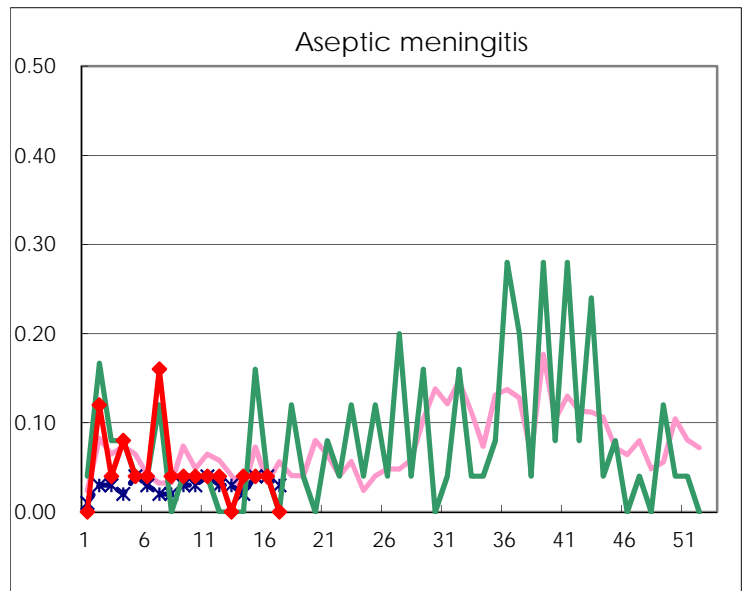
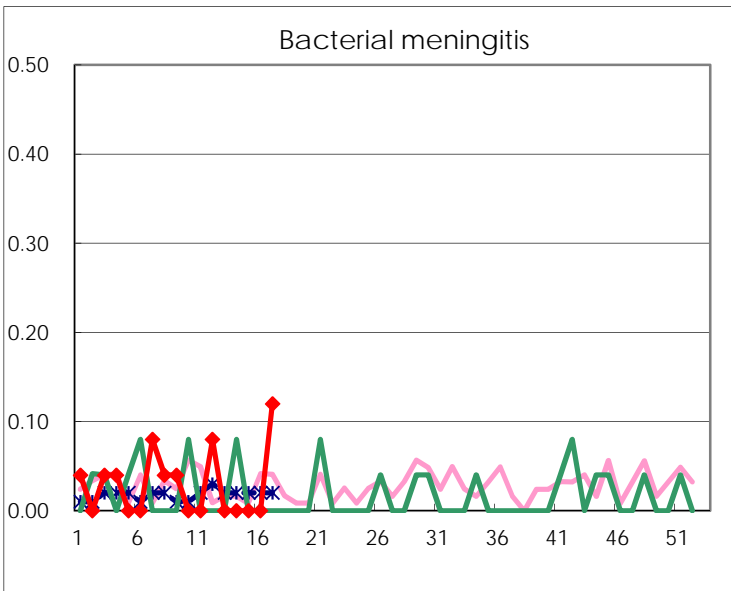
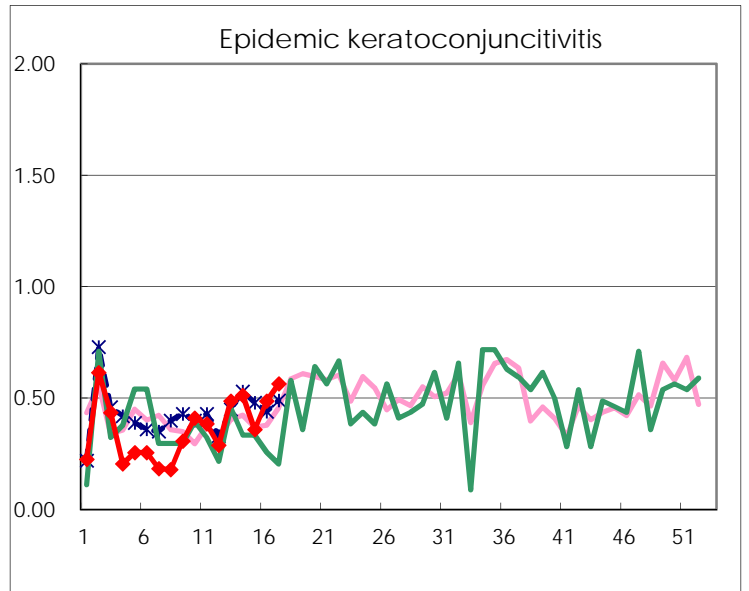
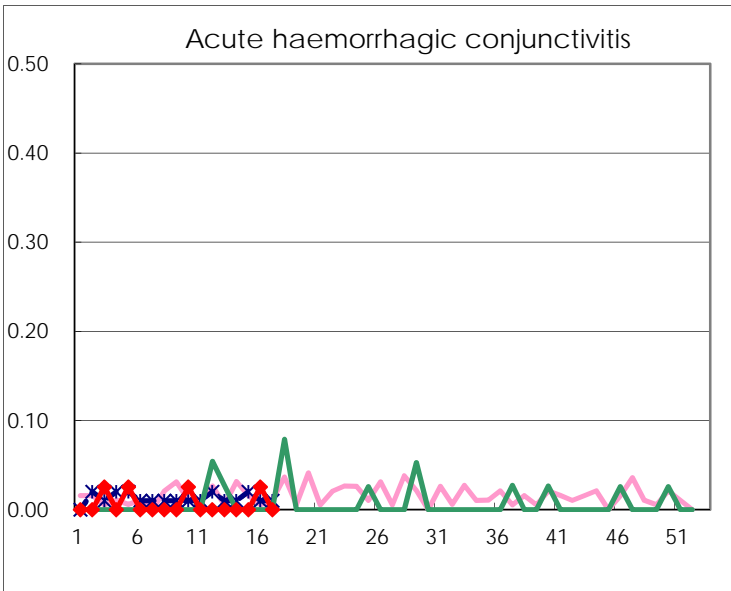
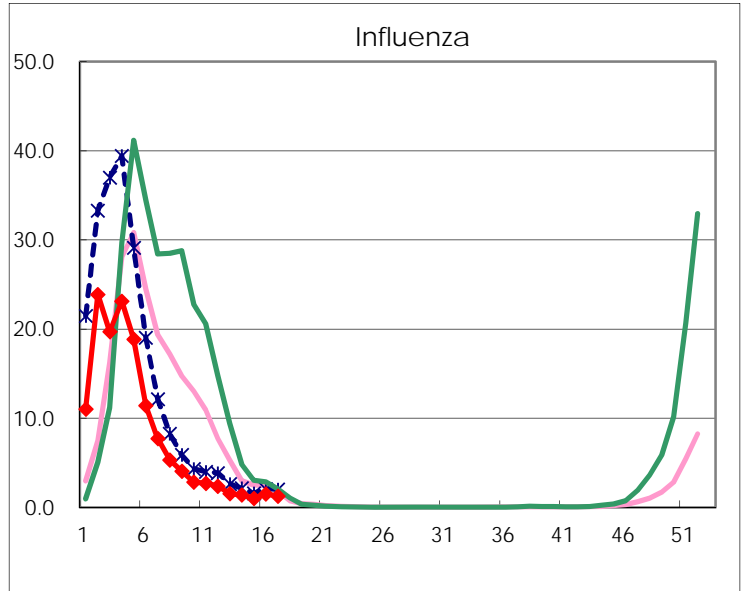
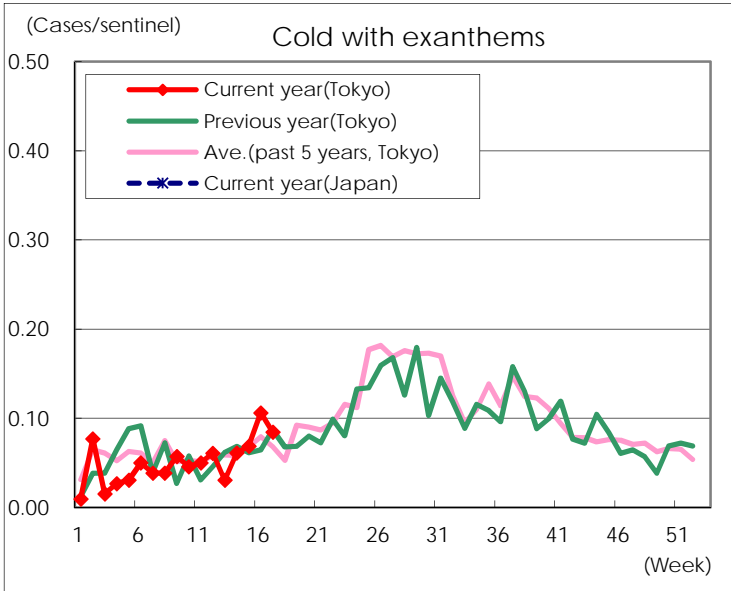
Diseases	Tokyo				
	14th	15th	16th	17th	/sentinel
Respiratory syncytial virus infection	41	31	37	41	0.16
Pharyngoconjunctival fever	56	46	47	99	0.38
Group A streptococcal pharyngitis	613	642	887	1,030	3.95
Infectious gastroenteritis	1,761	1,780	2,208	2,208	8.46
Chickenpox	186	129	135	159	0.61
Hand, foot, and mouth disease	17	35	38	58	0.22
Erythema infectiosum	250	239	397	387	1.48
Exanthem subitum	155	167	147	189	0.72
Pertussis	5	2	6	7	0.03
Herpangina	6	1	13	10	0.04
Mumps	65	61	59	62	0.24
Kawasaki disease	2	5	2	3	0.01
Cold with exanthems	16	18	28	22	0.08
Influenza	580	417	618	528	1.27
Acute hemorrhagic conjunctivitis			1		
Epidemic keratoconjunctivitis	20	14	19	22	0.56
Bacterial meningitis				3	0.12
Aseptic meningitis	1	1	1		
Mycoplasma pneumonia		2	6	8	0.32
Chlamydial pneumonia (excluding psittacosis)				1	0.04
Infectious gastroenteritis (only by Rotavirus)	4	5	5	4	0.16
Influenza-Associated Hospitalizations	15	6		3	0.12

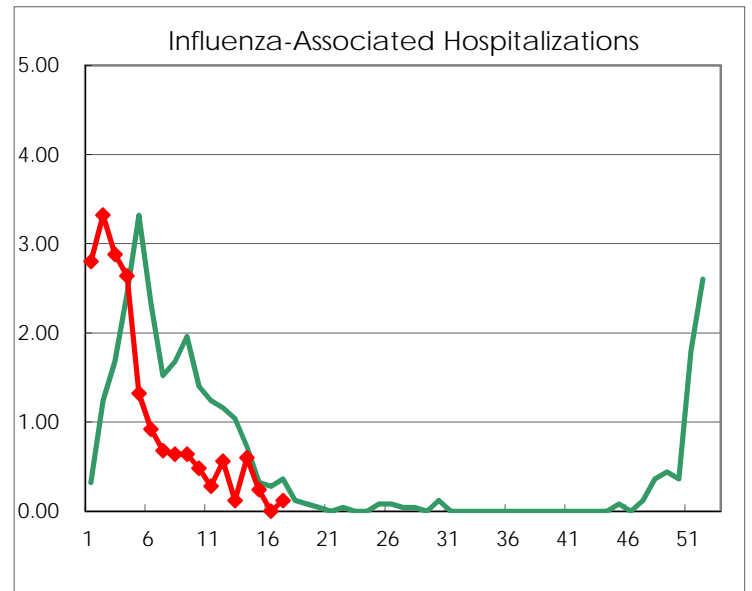
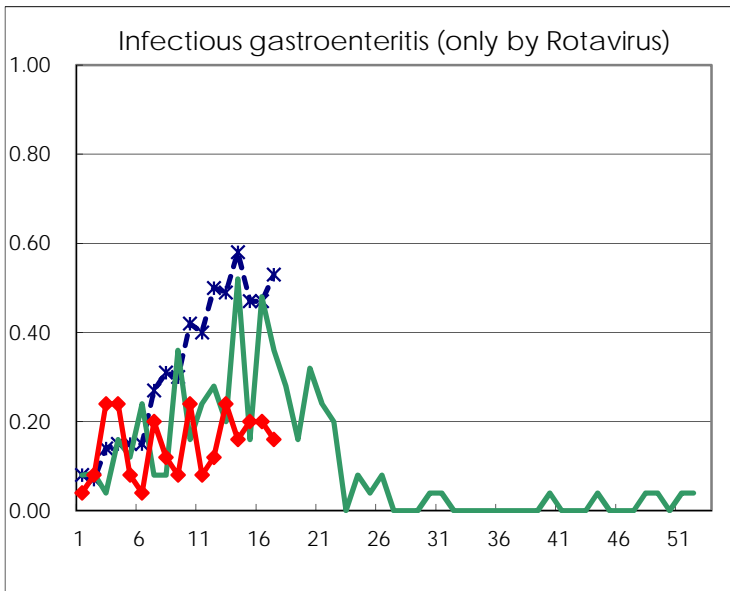
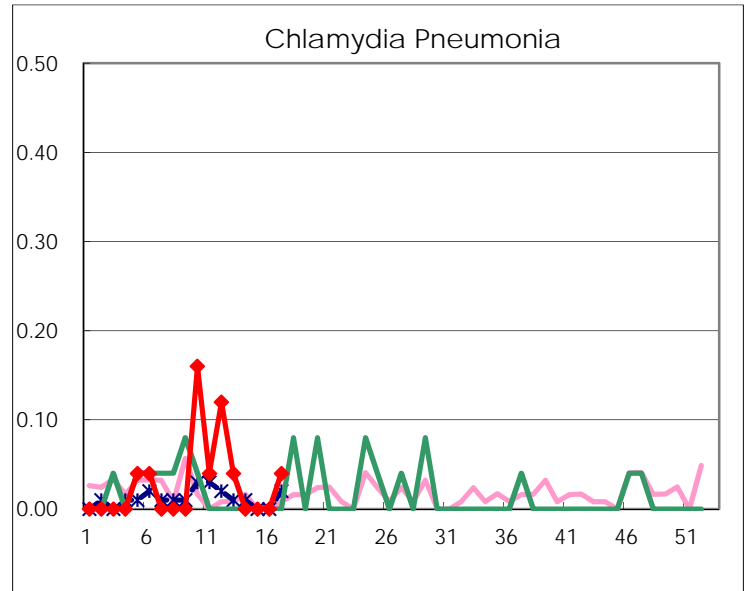
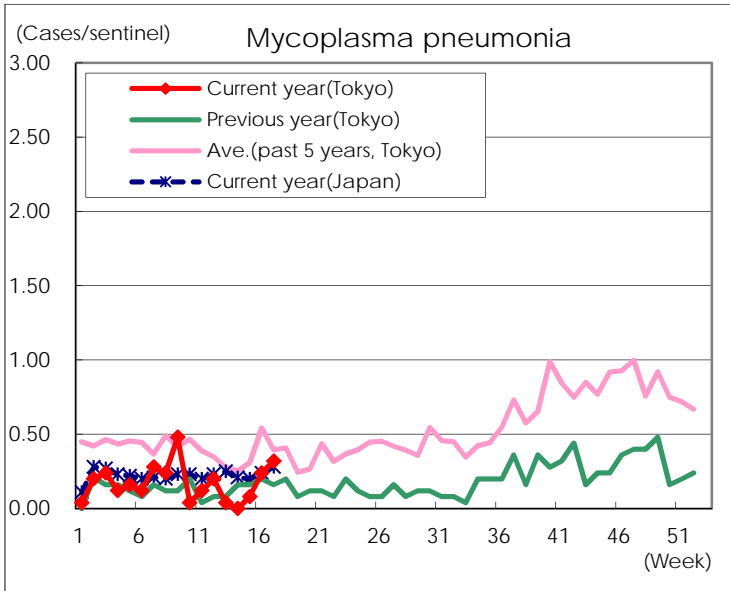
(Blank means 0.)

Disease Trend Graph (weekly reported cases per sentinelin comparison)









Number of sentinel facilities for weekly reporting		
Types of sentinels	Number of sentinels	Sentinels having reported
Pediatric	264	261
Influenza	419	415
Ophthalmic	39	39
Specially-designated	25	25