

11 May 2015 / Number 18

Surveillance System in Tokyo, Japan

The infectious diseases which all physicians must report

All physicians must report to health centers the incidence of the diseases which are shown at page one. Health centers electronically report the individual cases to Tokyo Metropolitan Infectious Disease Surveillance Center.

The infectious diseases required to be reported by the sentinels

The numbers of patients who visit the sentinel clinics or hospitals during a week are reported to health centers in Tokyo. And they electronically report the numbers to Tokyo Metropolitan Infectious Disease Surveillance Center. We have about 500 sentinel clinics and hospitals in Tokyo.

Tokyo Metropolitan Institute of Public Health

TEL:81-3-3363-3213 FAX:81-3-5332-7365

e-mail:www@tokyo-eiken.go.jp

URL:idsc.tokyo-eiken.go.jp/

Number of patients with the diseases which all physicians must report

Category	Diseases	Tokyo					Japan	
		15th	16th	17th	18th	Cum 2015	18th	Cum 2015
I	Ebola hemorrhagic fever							
	Crimean-Congo hemorrhagic fever							
	Smallpox							
	South American hemorrhagic fever							
	Plague							
	Marburg disease							
	Lassa fever							
II	Acute poliomyelitis							
	Tuberculosis	85	67	77	73	1,191	318	7,620
	Diphtheria							
	Severe Acute Respiratory Syndrome(SARS)							
	Middle East Respiratory Syndrome (MERS)							
	Avian influenza H5N1							
	Avian influenza H7N9							
III	Cholera							3
	Shigellosis		1	3	1	16	2	42
	Enterohemorrhagic Escherichia coli infection		2		1	19	14	332
	Typhoid fever	1	1			6	1	18
	Paratyphoid fever			1		3		13
IV	Hepatitis E		1	1		12	5	69
	West Nile fever							
	Hepatitis A	1	3	1	1	14	2	99
	Echinococcosis					1		5
	Yellow fever							
	Psittacosis							3
	Omsk hemorrhagic fever							
	Relapsing fever							
	Kyasanur forest disease							
	Q fever							
	Rabies							
	Coccidioidomycosis							1
	Monkeypox							
	Severe Fever with Thrombocytopenia Syndrome						2	5
	Hemorrhagic fever with renal syndrome							
	Western equine encephalitis							
	Tick-borne encephalitis							
	Anthrax							
	Chikungunya fever					2		4
	Scrub typhus(Tsutsugamushi disease)	1				1	2	29
	Dengue fever		4			22	3	77
	Eastern equine encephalitis							
	Avian influenza (excluding H5N1 and H7N9)							
	Nipah virus infection							
	Japanese spotted fever						1	8
	Japanese encephalitis							
	Hantavirus pulmonary syndrome							
	Herpes B virus infection							
	Glanders							
	Brucellosis							2
	Venezuelan equine encephalitis							
	Hendra virus infection							
	Epidemic typhus							
Botulism								
Malaria		1			3		6	
Tularemia								
Lyme disease						1	1	
Lyssavirus infection(excluding rabies)								
Rift valley fever								
Melioidosis								
Legionellosis	3	2	3	3	31	19	364	
Leptospirosis			1		3		3	
Rocky mountain spotted fever								

Category	Diseases	Tokyo					Japan	
		15th	16th	17th	18th	Cum 2015	18th	Cum 2015
V	Amebiasis	3	3	3	3	62	14	340
	Viral hepatitis(excluding hepatitis A and E)		4	2		15	4	70
	CRE infection	2	4	5	5	49	11	388
	Acute encephalitis(excluding JE and WNE)					21	4	199
	Cryptosporidiosis					2		5
	Creutzfeldt-Jakob disease			1	1	9	3	58
	Severe invasive streptococcal infections(TSLS)	3	2		2	30	2	183
	Acquired immunodeficiency syndrome (AIDS)	9	15	10	2	136	8	440
	Giardiasis		2	1		5	1	27
	Invasive <i>Haemophilus influenzae</i> disease		1	2		9	2	91
	Invasive meningococcal disease	1				4		13
	Invasive pneumococcal disease	9	11	4	10	128	41	941
	Varicella (limited to hospitalized case)		1	2	1	12	4	92
	Congenital rubella syndrome							
	Syphilis	34	24	21	19	275	17	650
	Disseminated cryptococcosis					3	2	43
	Tetanus					1	1	21
	Vancomycin-resistant <i>S. aureus</i> infection							
	Vancomycin-resistant Enterococcus infection						1	18
	Rubella		1	1	1	15	3	67
Measles	2	1	1	1	6	3	20	
MDRA infection		1			1		6	

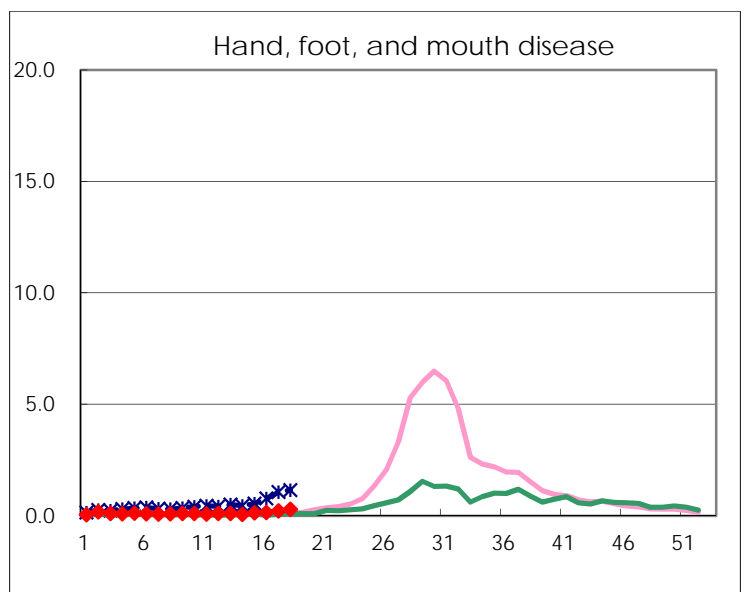
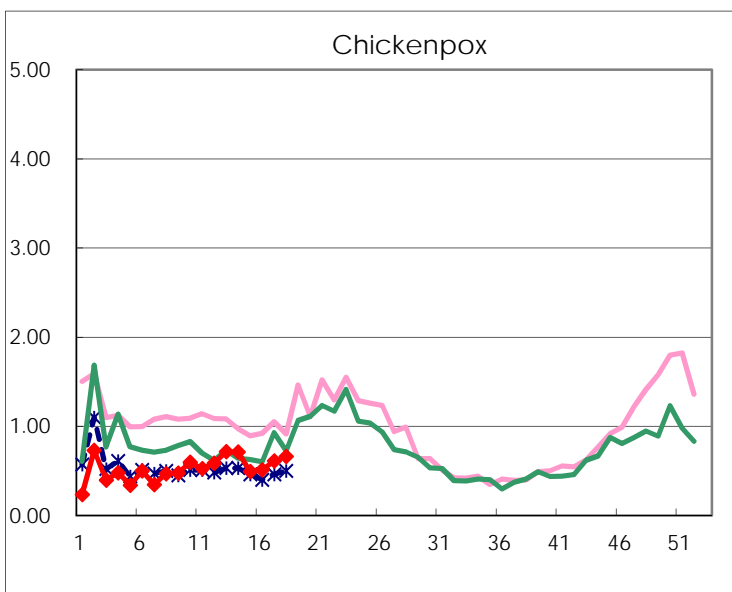
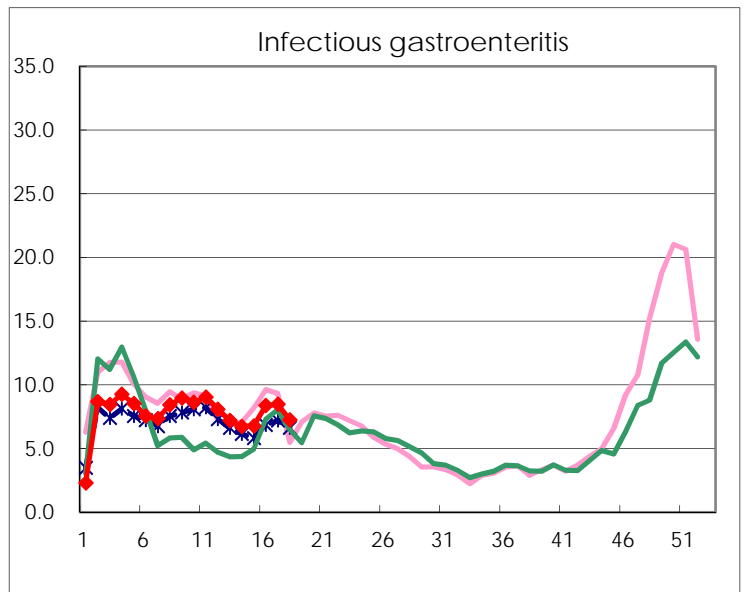
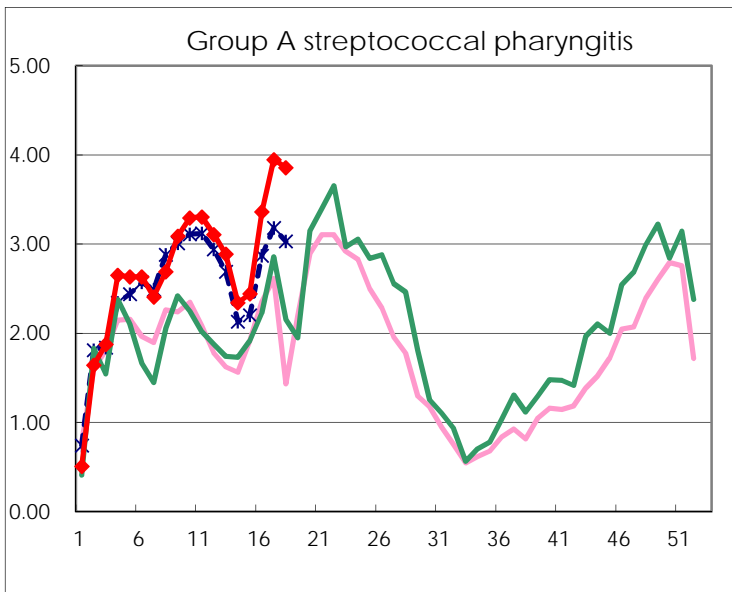
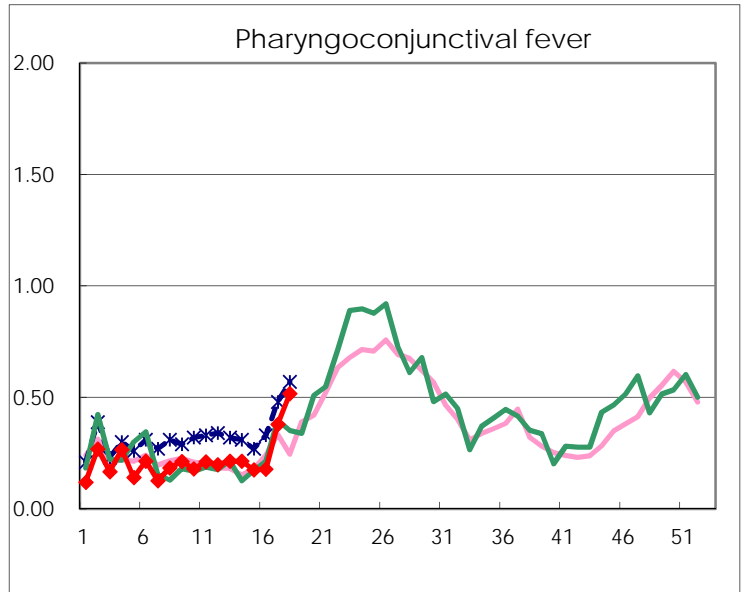
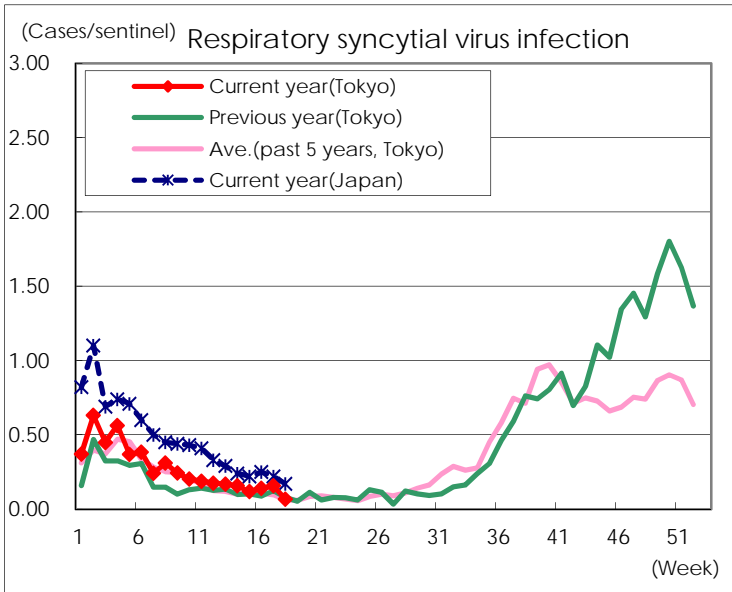
※ Designated infectious disease

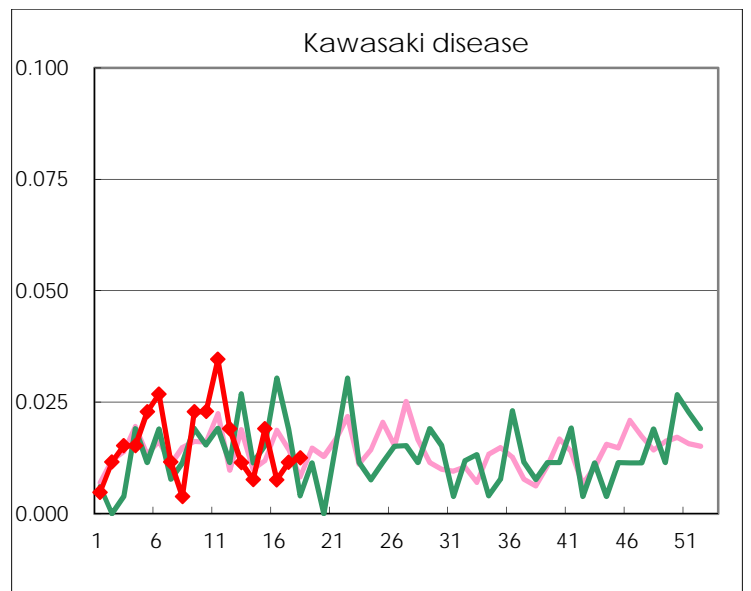
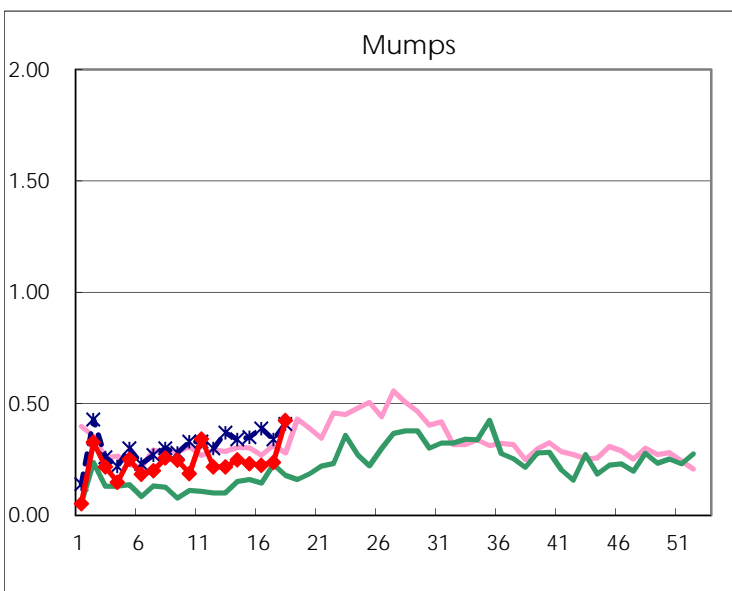
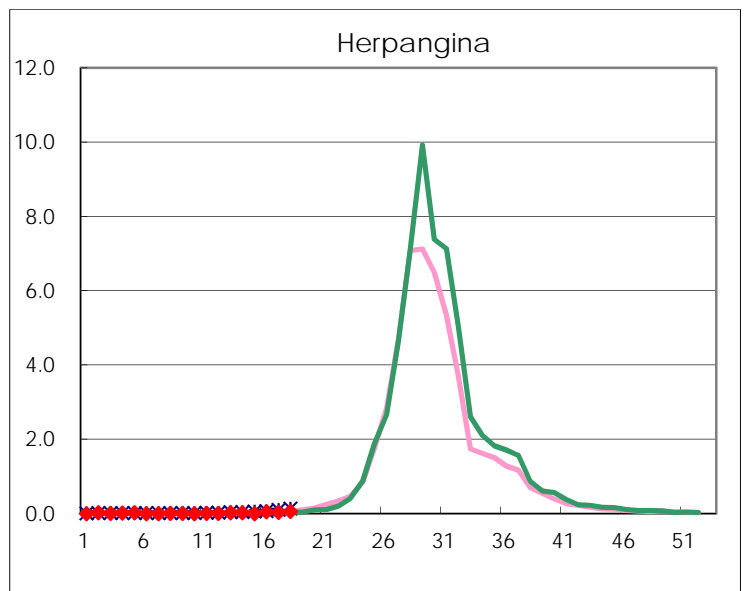
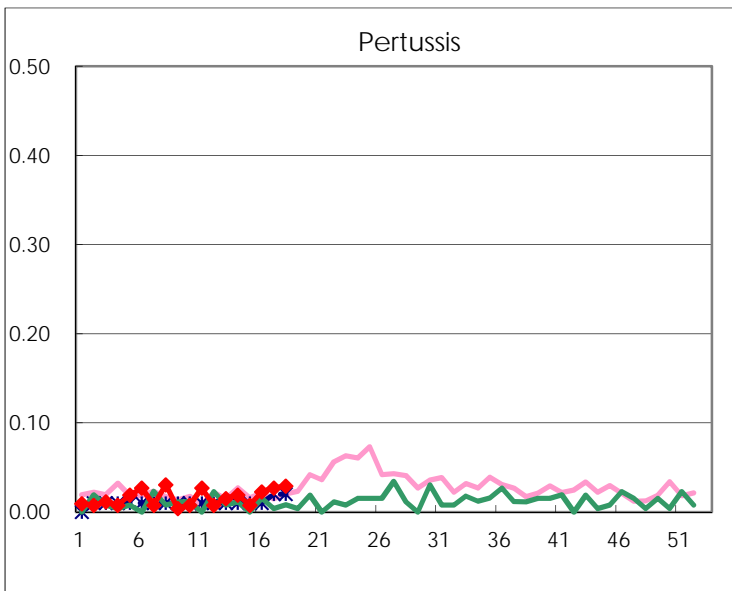
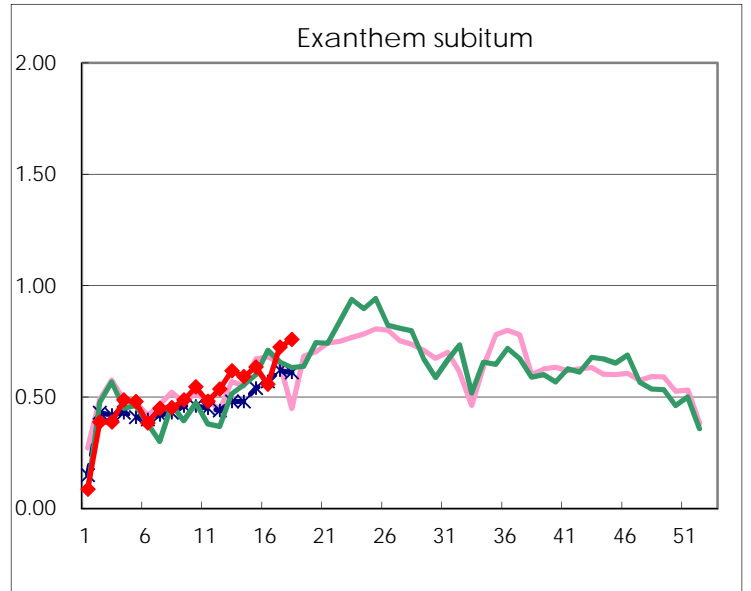
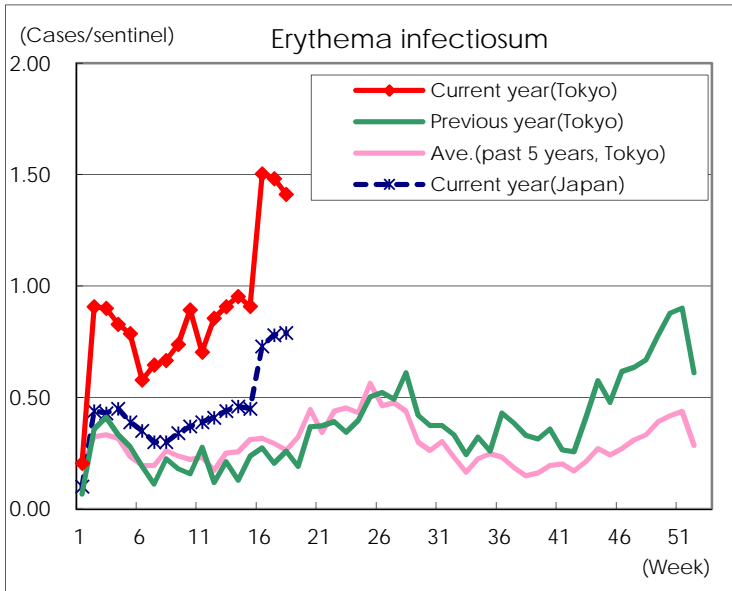
Number of patients with the diseases to be reported
by the designated clinics and hospitals

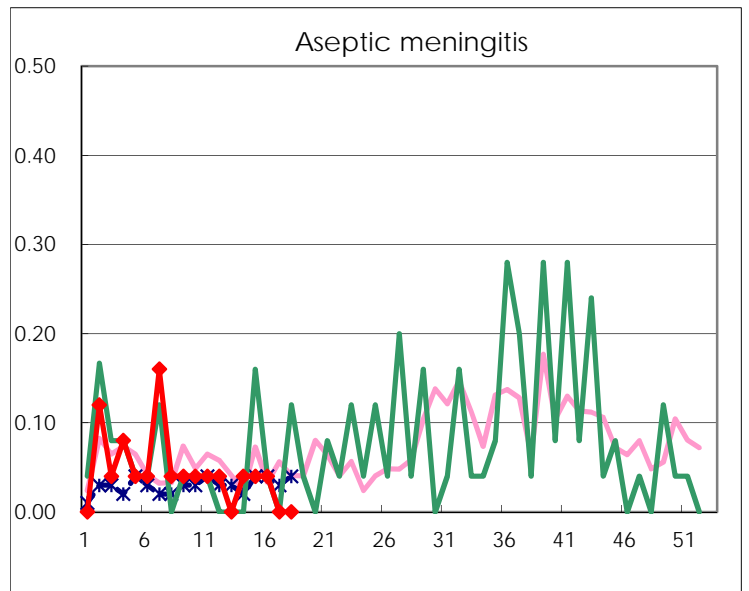
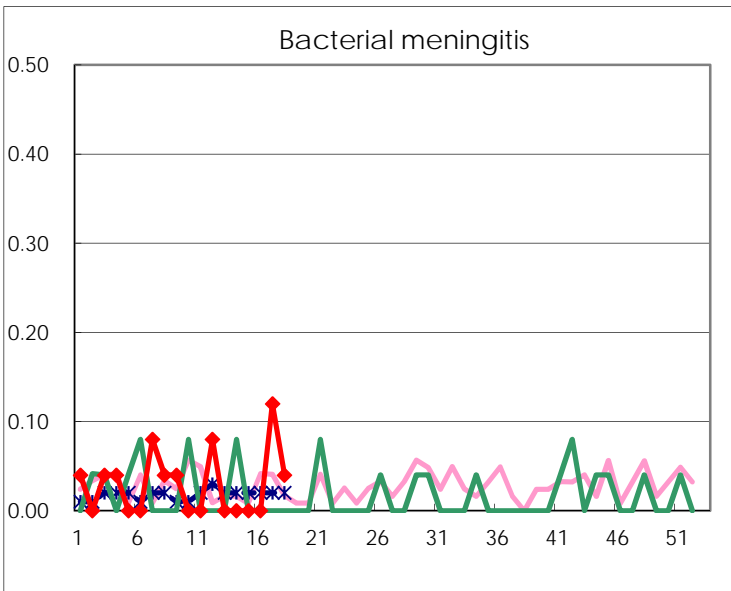
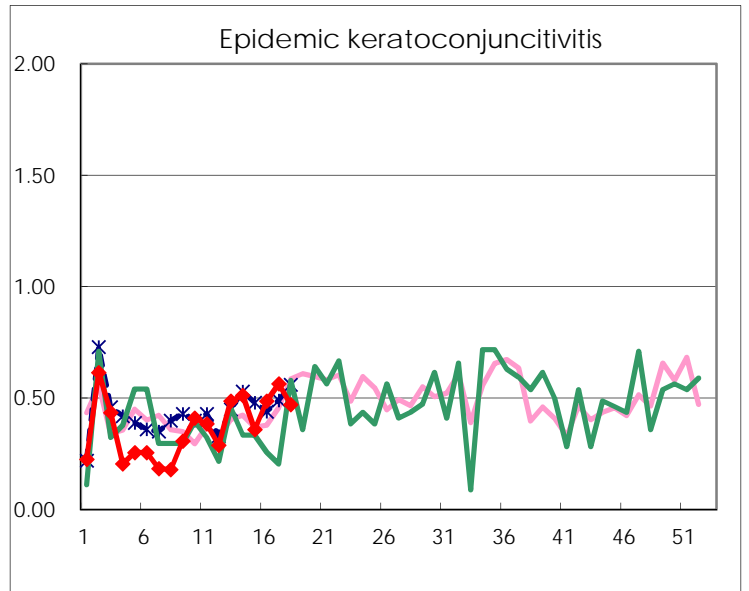
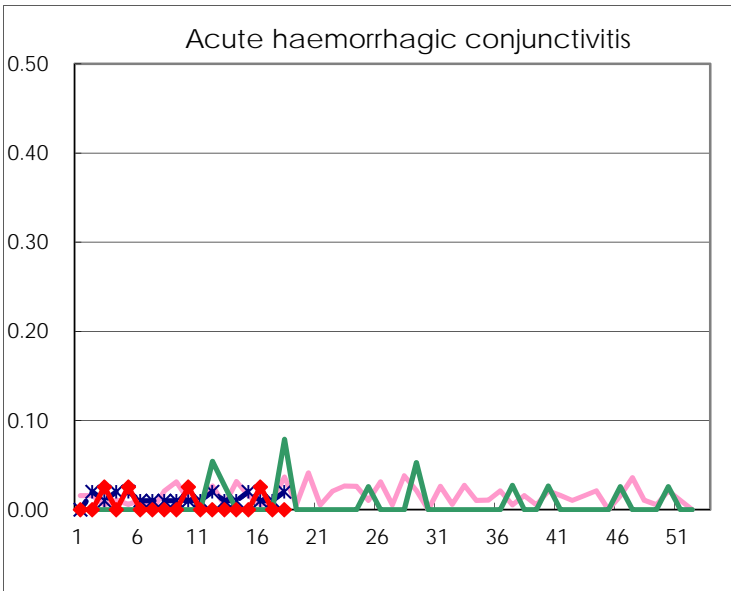
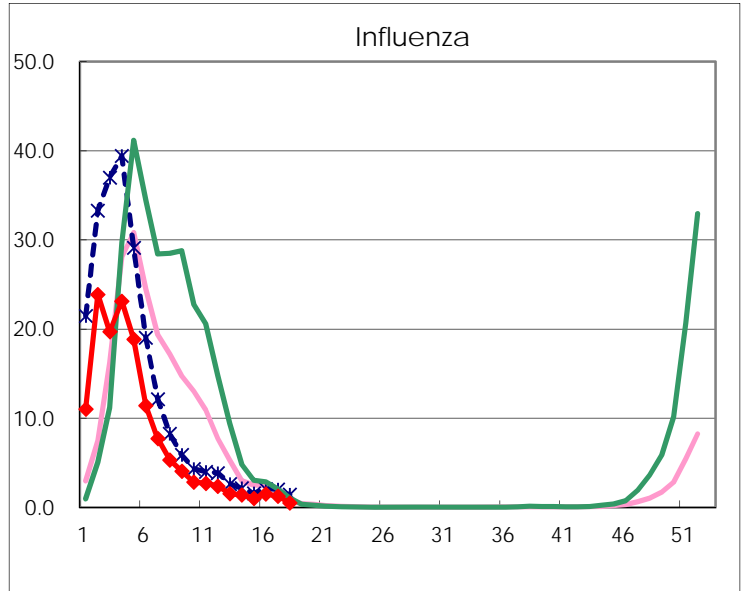
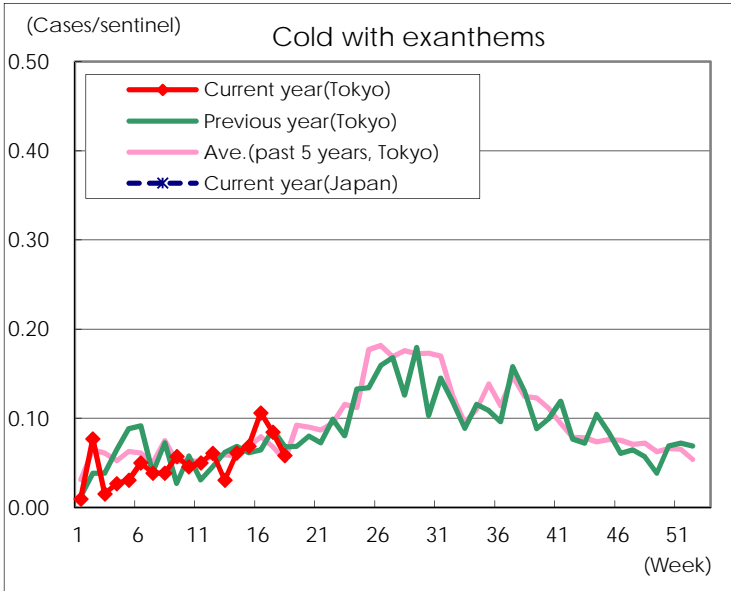
Diseases	Tokyo				
	15th	16th	17th	18th	/sentinel
Respiratory syncytial virus infection	31	37	41	16	0.07
Pharyngoconjunctival fever	46	47	99	124	0.52
Group A streptococcal pharyngitis	642	887	1,030	926	3.86
Infectious gastroenteritis	1,780	2,208	2,208	1,739	7.25
Chickenpox	129	135	159	159	0.66
Hand, foot, and mouth disease	35	38	58	69	0.29
Erythema infectiosum	239	397	387	339	1.41
Exanthem subitum	167	147	189	182	0.76
Pertussis	2	6	7	7	0.03
Herpangina	1	13	10	14	0.06
Mumps	61	59	62	102	0.42
Kawasaki disease	5	2	3	3	0.01
Cold with exanthems	18	28	22	14	0.06
Influenza	417	618	528	188	0.49
Acute hemorrhagic conjunctivitis		1			
Epidemic keratoconjunctivitis	14	19	22	16	0.47
Bacterial meningitis			3	1	0.04
Aseptic meningitis	1	1			
Mycoplasma pneumonia	2	6	8	3	0.12
Chlamydial pneumonia (excluding psittacosis)			1	1	0.04
Infectious gastroenteritis (only by Rotavirus)	5	5	4	4	0.16
Influenza-Associated Hospitalizations	6		3	2	0.08

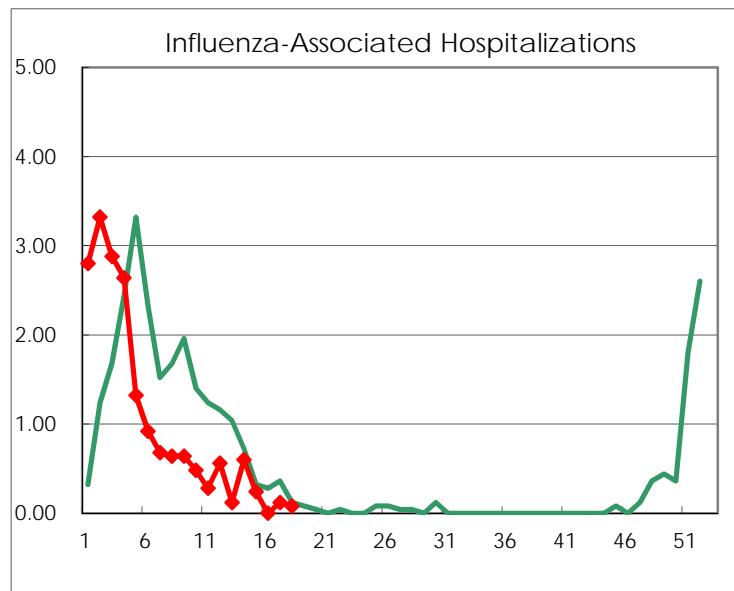
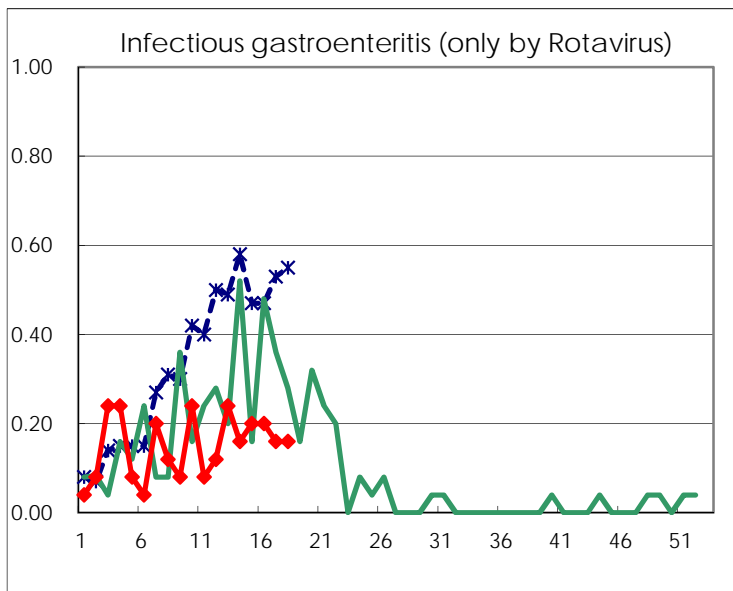
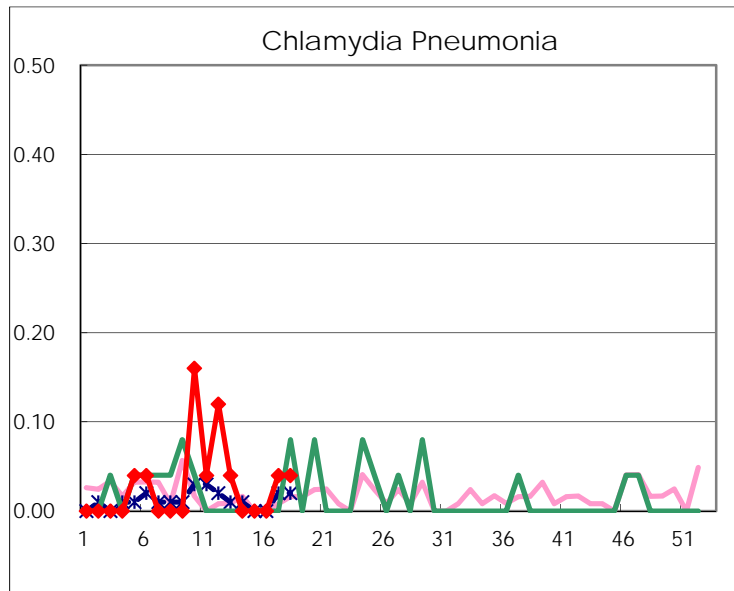
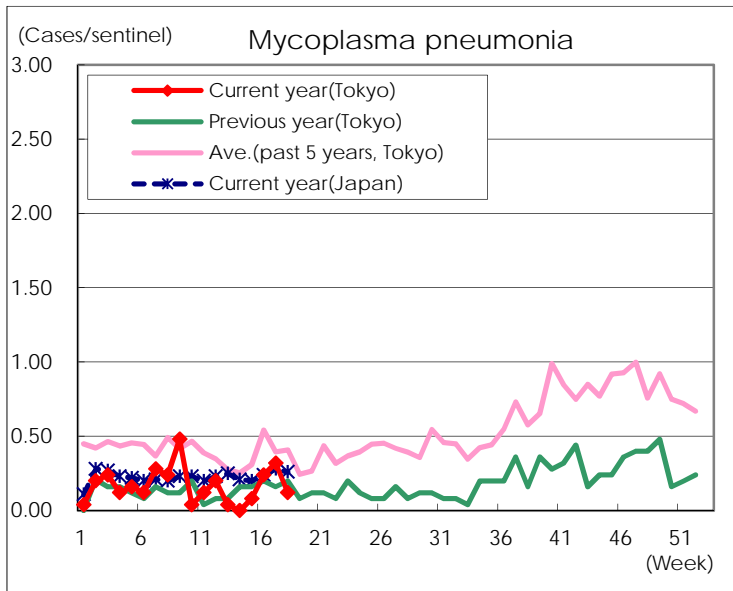
(Blank means 0.)

Disease Trend Graph (weekly reported cases per sentinelin comparison)









Number of sentinel facilities for weekly reporting		
Types of sentinels	Number of sentinels	Sentinels having reported
Pediatric	264	240
Influenza	419	380
Ophthalmic	39	34
Specially-designated	25	25