

14 May 2015 / Number 19

Surveillance System in Tokyo, Japan

The infectious diseases which all physicians must report

All physicians must report to health centers the incidence of the diseases which are shown at page one. Health centers electronically report the individual cases to Tokyo Metropolitan Infectious Disease Surveillance Center.

The infectious diseases required to be reported by the sentinels

The numbers of patients who visit the sentinel clinics or hospitals during a week are reported to health centers in Tokyo. And they electronically report the numbers to Tokyo Metropolitan Infectious Disease Surveillance Center. We have about 500 sentinel clinics and hospitals in Tokyo.

Tokyo Metropolitan Institute of Public Health

TEL:81-3-3363-3213 FAX:81-3-5332-7365

e-mail:www@tokyo-eiken.go.jp

URL:idsc.tokyo-eiken.go.jp/

Number of patients with the diseases which all physicians must report

Category	Diseases	Tokyo				Japan		
		16th	17th	18th	19th	Cum 2015	19th	Cum 2015
I	Ebola hemorrhagic fever							
	Crimean-Congo hemorrhagic fever							
	Smallpox							
	South American hemorrhagic fever							
	Plague							
	Marburg disease							
	Lassa fever							
II	Acute poliomyelitis							
	Tuberculosis	67	77	82	29	1,228	177	7,916
	Diphtheria							
	Severe Acute Respiratory Syndrome(SARS)							
	Middle East Respiratory Syndrome (MERS)							
	Avian influenza H5N1							
	Avian influenza H7N9							
III	Cholera							3
	Shigellosis	1	3	1	2	18	3	45
	Enterohemorrhagic Escherichia coli infection	2		1		19	7	340
	Typhoid fever	1				6		18
	Paratyphoid fever		1			3		13
IV	Hepatitis E	1	1			12	1	70
	West Nile fever							
	Hepatitis A	3	1	1	2	16	4	106
	Echinococcosis					1		5
	Yellow fever							
	Psittacosis							3
	Omsk hemorrhagic fever							
	Relapsing fever							
	Kyasanur forest disease							
	Q fever							
	Rabies							
	Coccidioidomycosis							1
	Monkeypox							
	Severe Fever with Thrombocytopenia Syndrome							6
	Hemorrhagic fever with renal syndrome							
	Western equine encephalitis							
	Tick-borne encephalitis							
	Anthrax							
	Chikungunya fever					2		4
	Scrub typhus(Tsutsugamushi disease)					1	2	32
	Dengue fever	4			1	23	1	80
	Eastern equine encephalitis							
	Avian influenza (excluding H5N1 and H7N9)							
	Nipah virus infection							
	Japanese spotted fever							9
	Japanese encephalitis							
	Hantavirus pulmonary syndrome							
	Herpes B virus infection							
	Glanders							
	Brucellosis							2
	Venezuelan equine encephalitis							
	Hendra virus infection							
Epidemic typhus								
Botulism								
Malaria	1				3	1	7	
Tularemia								
Lyme disease							1	
Lyssavirus infection(excluding rabies)								
Rift valley fever								
Melioidosis								
Legionellosis	2	3	3	1	32	8	374	
Leptospirosis		1			3		3	
Rocky mountain spotted fever								

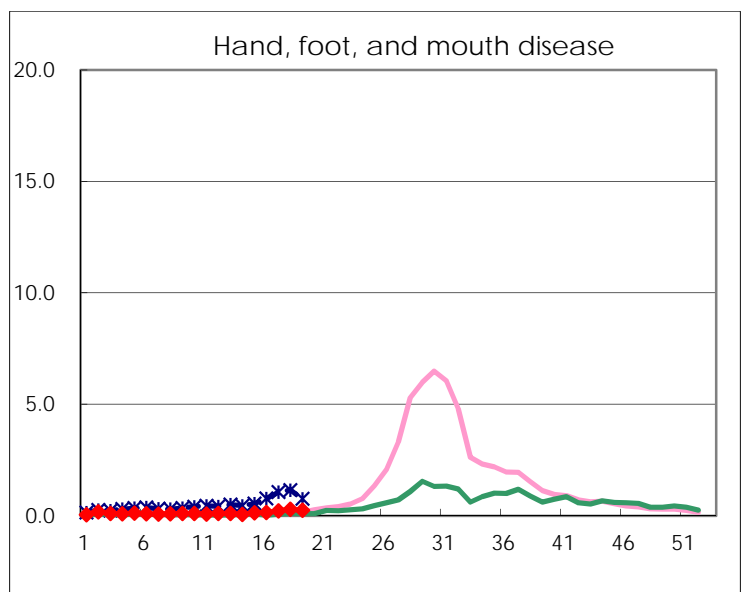
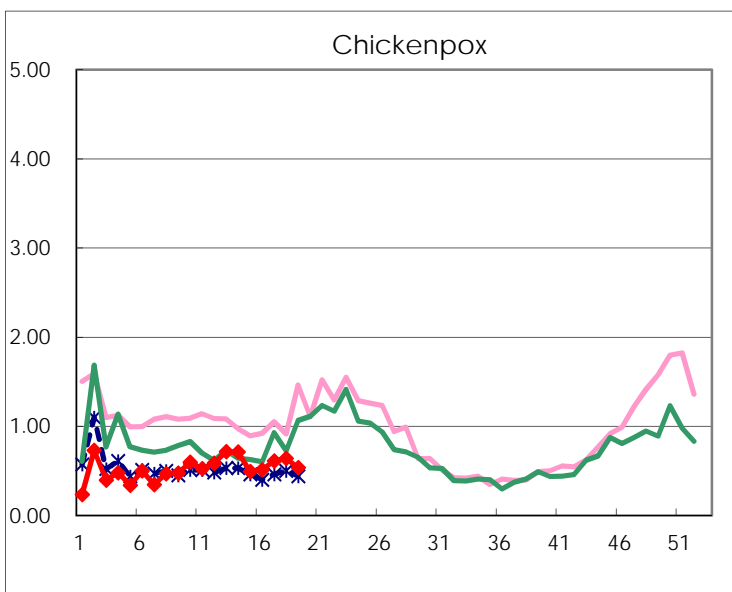
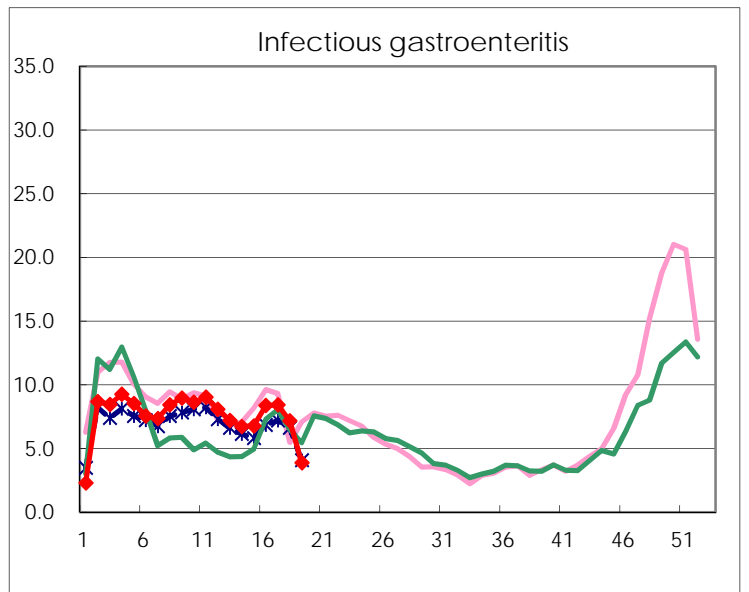
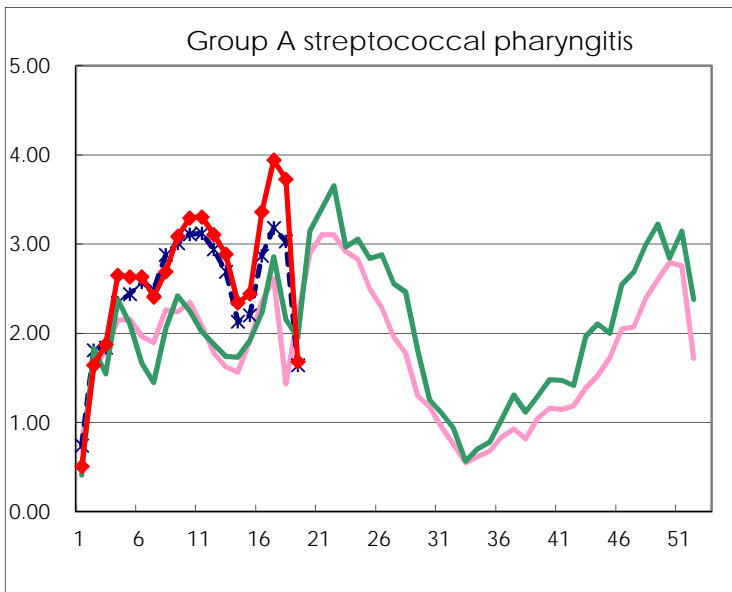
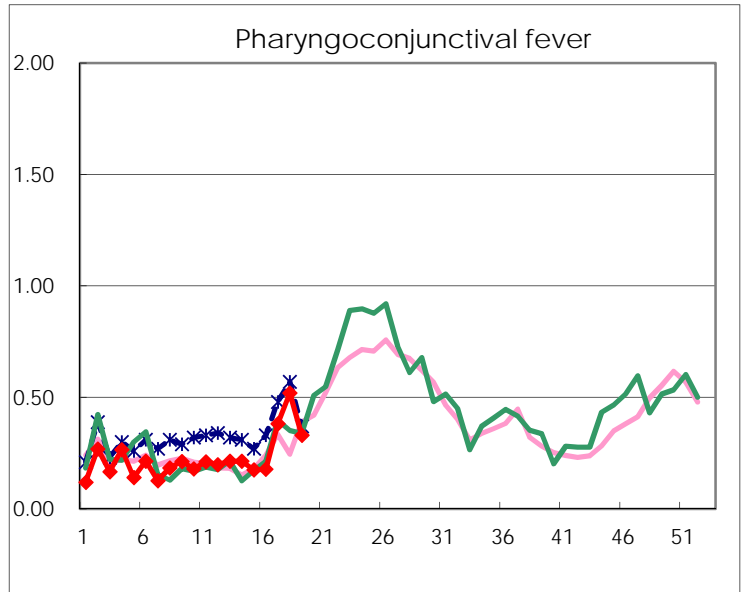
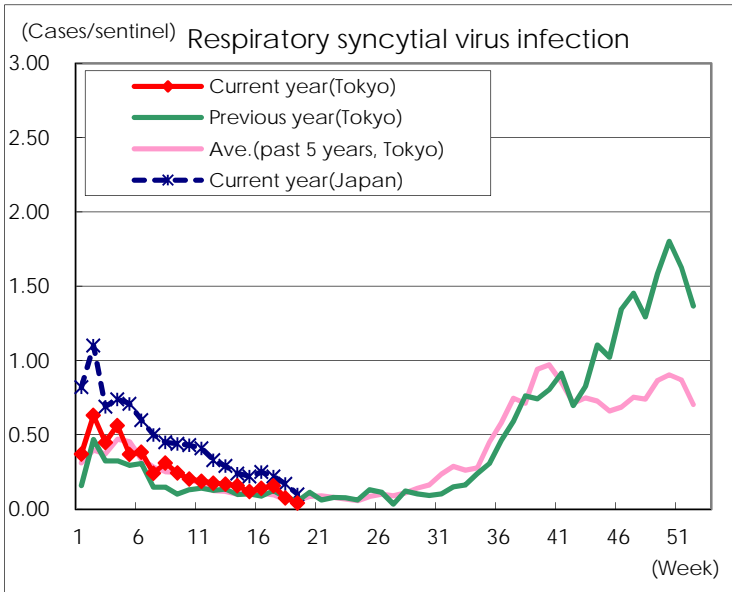
Category	Diseases	Tokyo					Japan	
		16th	17th	18th	19th	Cum 2015	19th	Cum 2015
V	Amebiasis	3	3	3	1	63	12	358
	Viral hepatitis(excluding hepatitis A and E)	4	2			15	1	73
	CRE infection	4	5	5	2	51	11	404
	Acute encephalitis(excluding JE and WNE)					21	2	202
	Cryptosporidiosis					2		5
	Creutzfeldt-Jakob disease		1	1		9		59
	Severe invasive streptococcal infections(TSLS)	2		2		30		185
	Acquired immunodeficiency syndrome (AIDS)	15	10	2	7	143	7	459
	Giardiasis	2	1			5		28
	Invasive <i>Haemophilus influenzae</i> disease	1	2		1	10	3	94
	Invasive meningococcal disease					4	1	14
	Invasive pneumococcal disease	11	4	10	8	136	39	1,003
	Varicella (limited to hospitalized case)	1	2	1		12	4	98
	Congenital rubella syndrome							
	Syphilis	24	21	20	17	293	25	696
	Disseminated cryptococcosis					3		44
	Tetanus					1	3	25
	Vancomycin-resistant <i>S. aureus</i> infection						1	1
	Vancomycin-resistant Enterococcus infection							18
	Rubella	1	1			14	2	70
Measles	1	1	1		6	1	20	
MDRA infection	1				1		6	

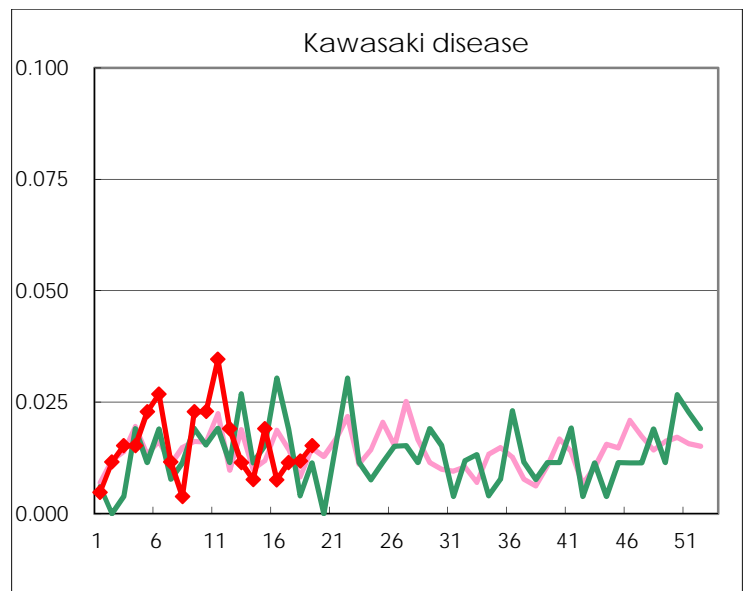
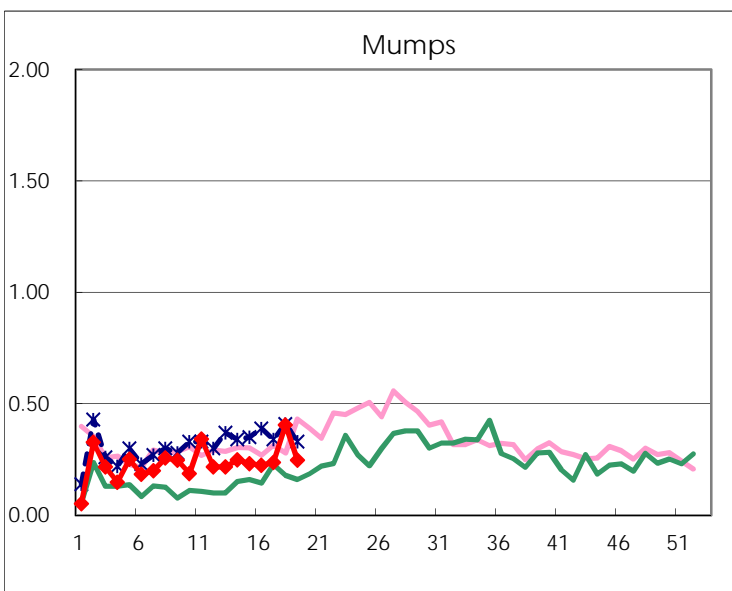
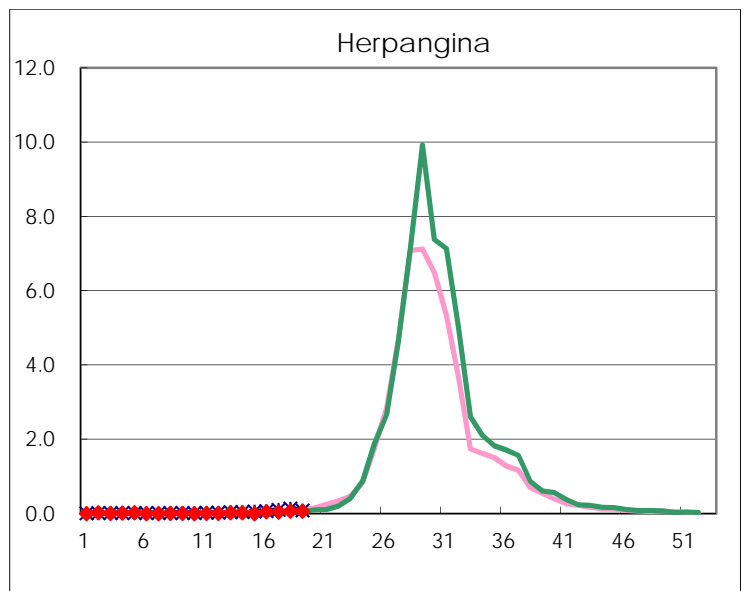
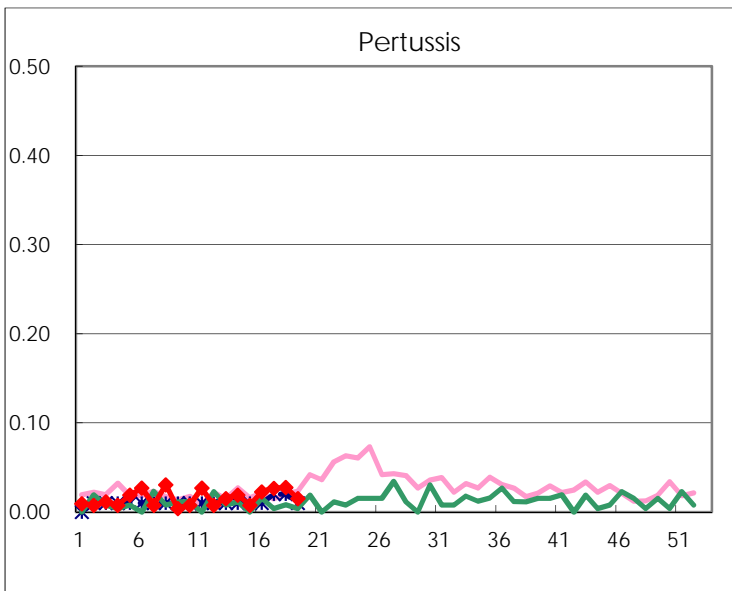
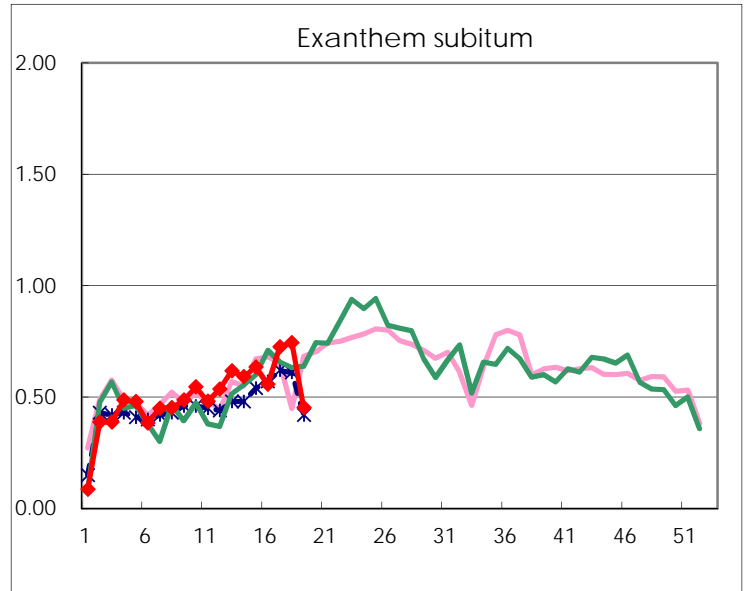
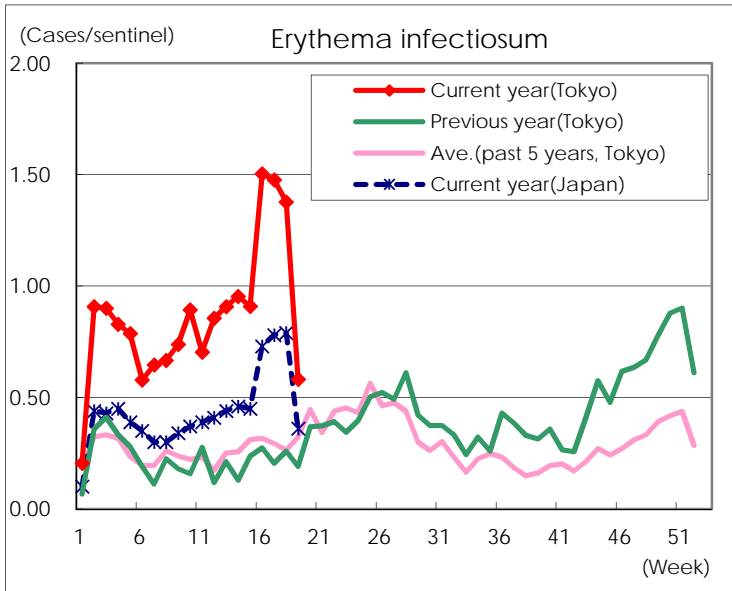
Number of patients with the diseases to be reported
by the designated clinics and hospitals

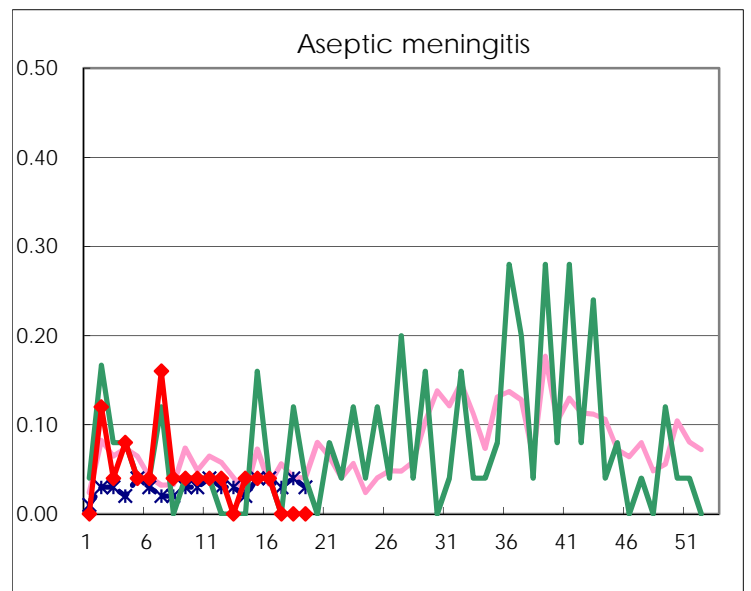
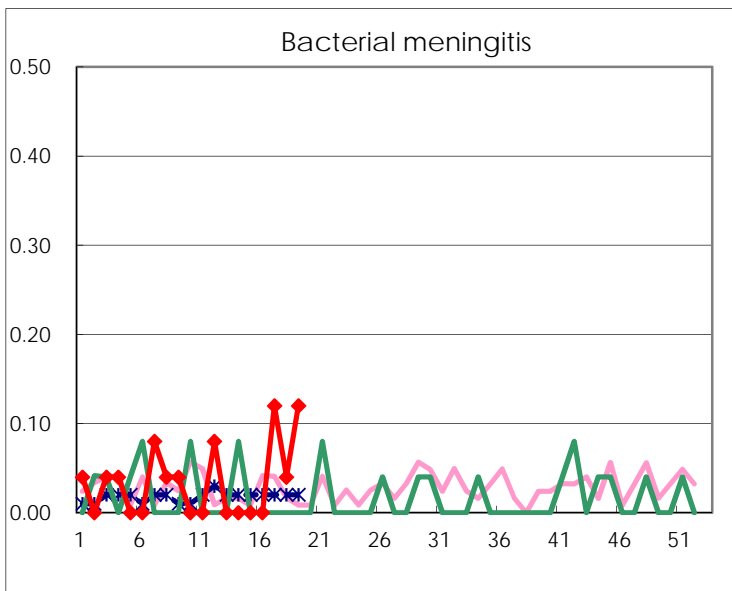
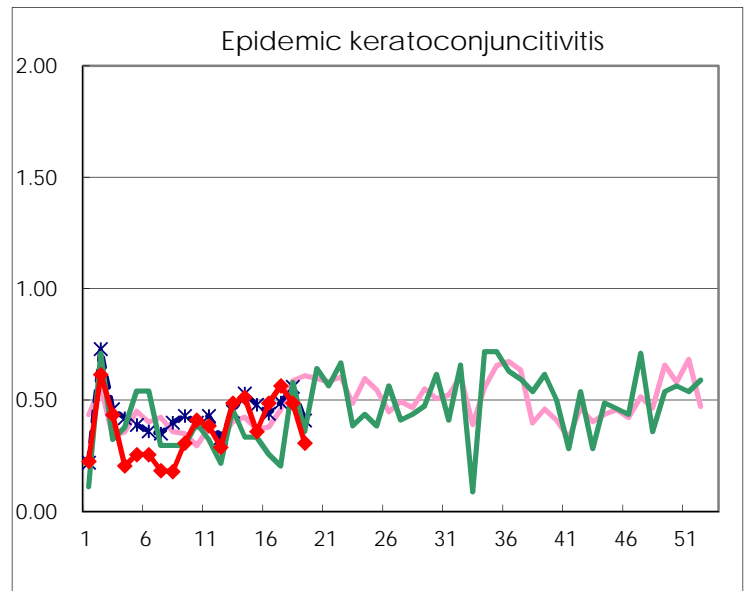
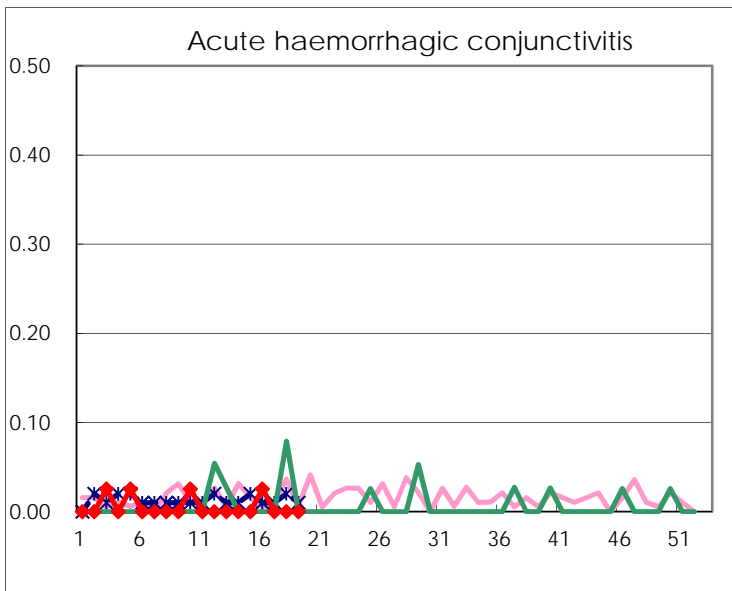
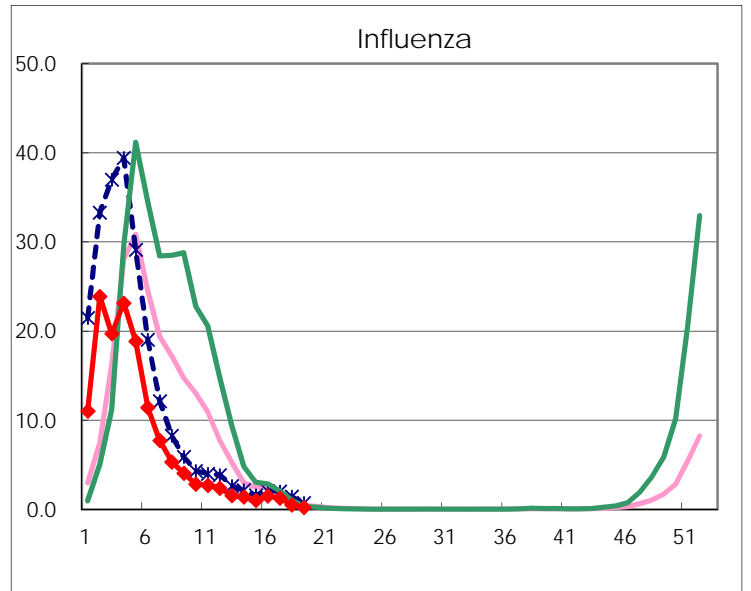
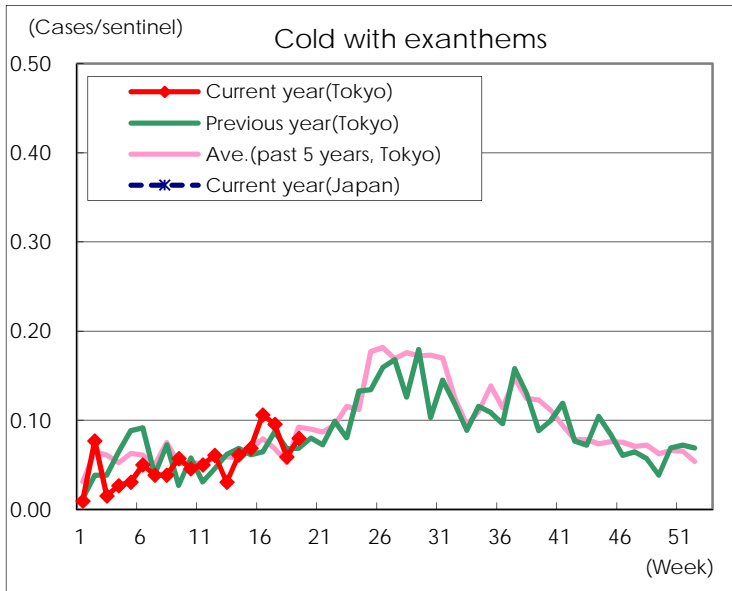
Diseases	Tokyo				
	16th	17th	18th	19th	/sentinel
Respiratory syncytial virus infection	37	41	19	11	0.04
Pharyngoconjunctival fever	47	100	132	87	0.33
Group A streptococcal pharyngitis	887	1,033	947	442	1.68
Infectious gastroenteritis	2,208	2,209	1,819	1,018	3.87
Chickenpox	135	160	162	141	0.54
Hand, foot, and mouth disease	38	58	75	64	0.24
Erythema infectiosum	397	387	350	153	0.58
Exanthem subitum	147	190	189	119	0.45
Pertussis	6	7	7	4	0.02
Herpangina	13	12	18	18	0.07
Mumps	59	62	103	65	0.25
Kawasaki disease	2	3	3	4	0.02
Cold with exanthems	28	25	15	21	0.08
Influenza	618	528	202	96	0.23
Acute hemorrhagic conjunctivitis	1				
Epidemic keratoconjunctivitis	19	22	18	12	0.31
Bacterial meningitis		3	1	3	0.12
Aseptic meningitis	1				
Mycoplasma pneumonia	6	8	3	5	0.20
Chlamydial pneumonia (excluding psittacosis)		1	1	1	0.04
Infectious gastroenteritis (only by Rotavirus)	5	4	4	7	0.28
Influenza-Associated Hospitalizations		3	2	1	0.04

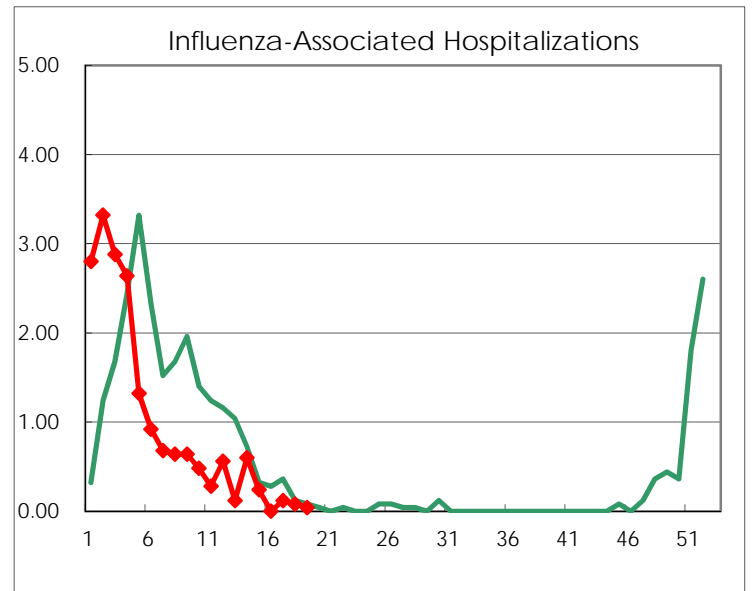
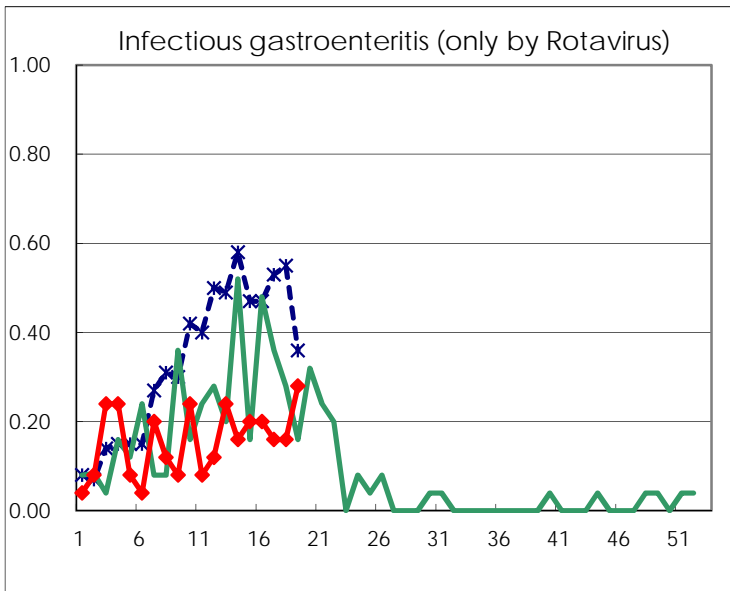
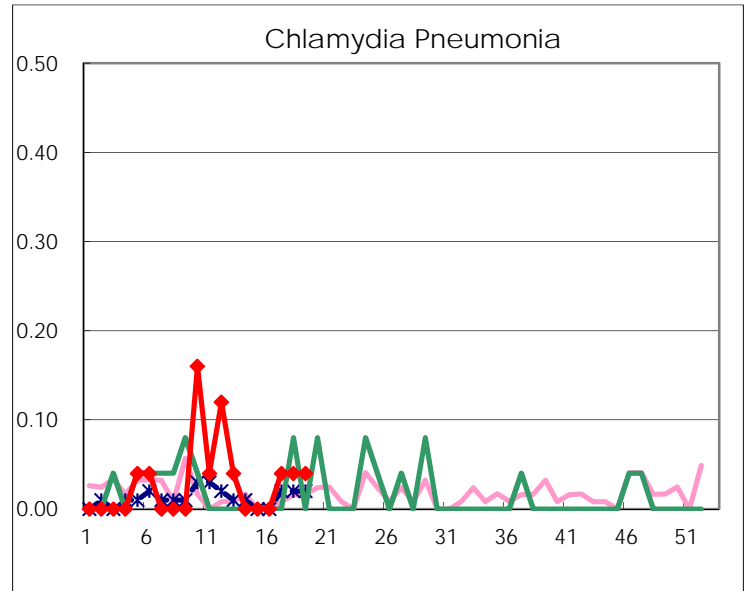
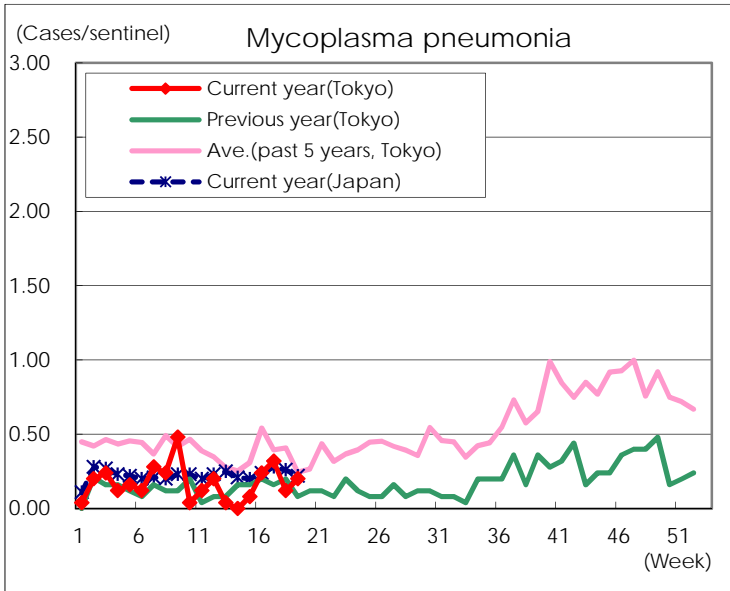
(Blank means 0.)

Disease Trend Graph (weekly reported cases per sentinelin comparison)









Number of sentinel facilities for weekly reporting		
Types of sentinels	Number of sentinels	Sentinels having reported
Pediatric	264	263
Influenza	419	414
Ophthalmic	39	39
Specially-designated	25	25