

21 May 2015 / Number 20

Surveillance System in Tokyo, Japan

The infectious diseases which all physicians must report

All physicians must report to health centers the incidence of the diseases which are shown at page one. Health centers electronically report the individual cases to Tokyo Metropolitan Infectious Disease Surveillance Center.

The infectious diseases required to be reported by the sentinels

The numbers of patients who visit the sentinel clinics or hospitals during a week are reported to health centers in Tokyo. And they electronically report the numbers to Tokyo Metropolitan Infectious Disease Surveillance Center. We have about 500 sentinel clinics and hospitals in Tokyo.

Tokyo Metropolitan Institute of Public Health

TEL:81-3-3363-3213 FAX:81-3-5332-7365

e-mail:www@tokyo-eiken.go.jp

URL:idsc.tokyo-eiken.go.jp/

Number of patients with the diseases which all physicians must report

Category	Diseases	Tokyo					Japan	
		17th	18th	19th	20th	Cum 2015	20th	Cum 2015
I	Ebola hemorrhagic fever							
	Crimean-Congo hemorrhagic fever							
	Smallpox							
	South American hemorrhagic fever							
	Plague							
	Marburg disease							
	Lassa fever							
II	Acute poliomyelitis							
	Tuberculosis	80	84	30	74	1,311	367	8,411
	Diphtheria							
	Severe Acute Respiratory Syndrome(SARS)							
	Middle East Respiratory Syndrome (MERS)							
	Avian influenza H5N1							
	Avian influenza H7N9							
III	Cholera							3
	Shigellosis	3	1	2	3	21	2	46
	Enterohemorrhagic Escherichia coli infection		1			19	38	383
	Typhoid fever					6	1	19
	Paratyphoid fever	1				3		13
IV	Hepatitis E	1				12	1	73
	West Nile fever							
	Hepatitis A	1	1	2	1	17	5	113
	Echinococcosis					1		7
	Yellow fever							
	Psittacosis							3
	Omsk hemorrhagic fever							
	Relapsing fever							
	Kyasanur forest disease							
	Q fever							
	Rabies							
	Coccidioidomycosis							1
	Monkeypox							
	Severe Fever with Thrombocytopenia Syndrome						1	7
	Hemorrhagic fever with renal syndrome							
	Western equine encephalitis							
	Tick-borne encephalitis							
	Anthrax							
	Chikungunya fever				1	3	1	5
	Scrub typhus(Tsutsugamushi disease)					1	5	37
	Dengue fever			1	1	24	2	83
	Eastern equine encephalitis							
	Avian influenza (excluding H5N1 and H7N9)							
	Nipah virus infection							
	Japanese spotted fever						4	14
	Japanese encephalitis							
	Hantavirus pulmonary syndrome							
	Herpes B virus infection							
	Glanders							
	Brucellosis							2
	Venezuelan equine encephalitis							
	Hendra virus infection							
Epidemic typhus								
Botulism								
Malaria				1	4		9	
Tularemia								
Lyme disease							1	
Lyssavirus infection(excluding rabies)								
Rift valley fever								
Melioidosis								
Legionellosis	3	3	1	1	33	13	388	
Leptospirosis	1			1	4	1	4	
Rocky mountain spotted fever								

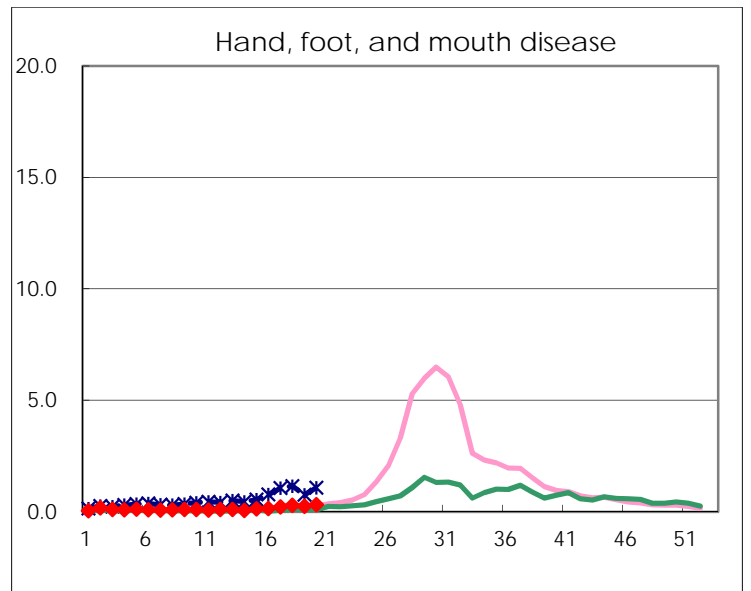
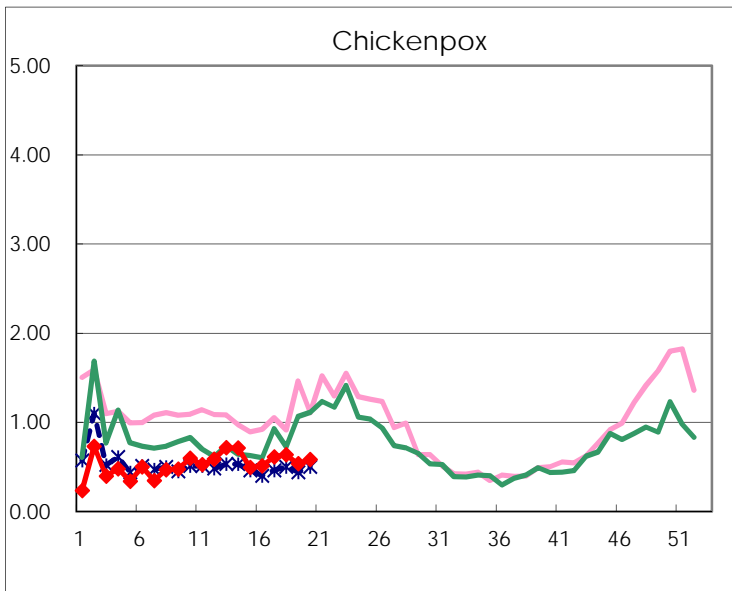
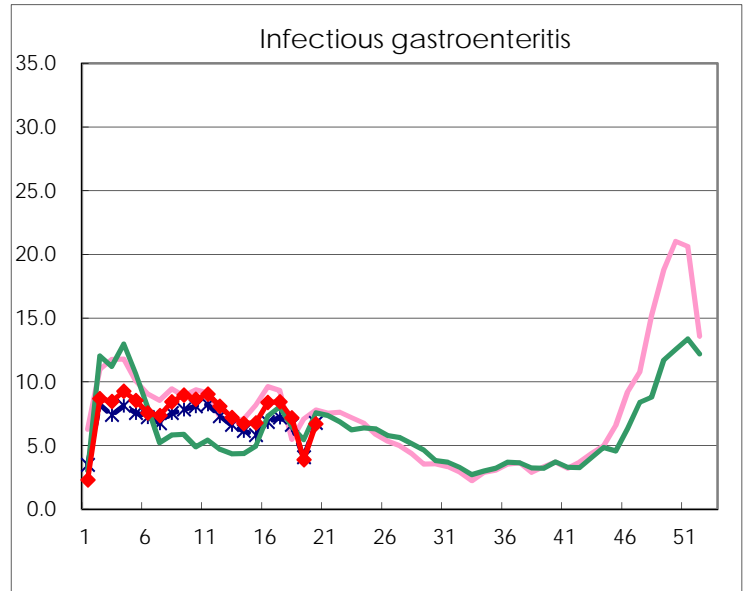
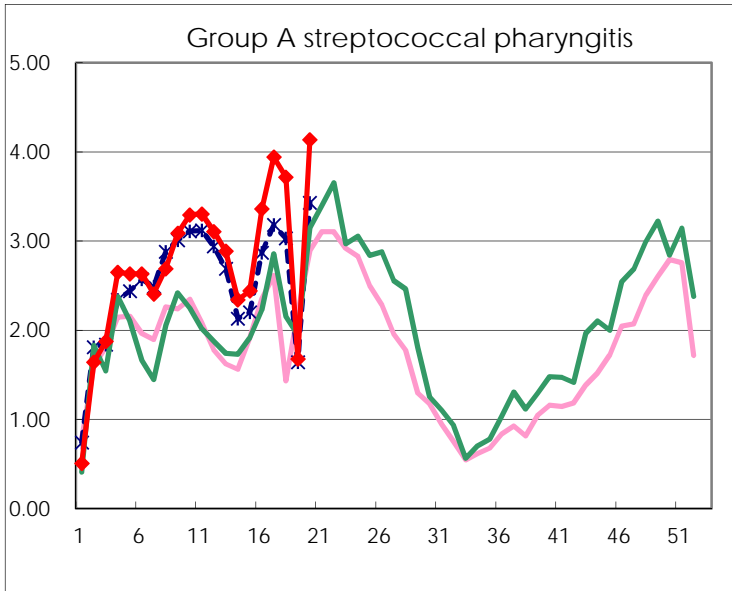
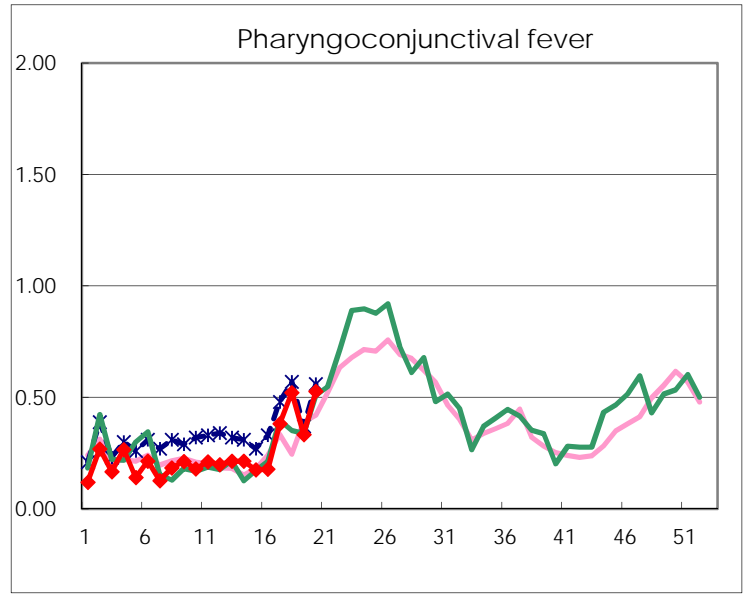
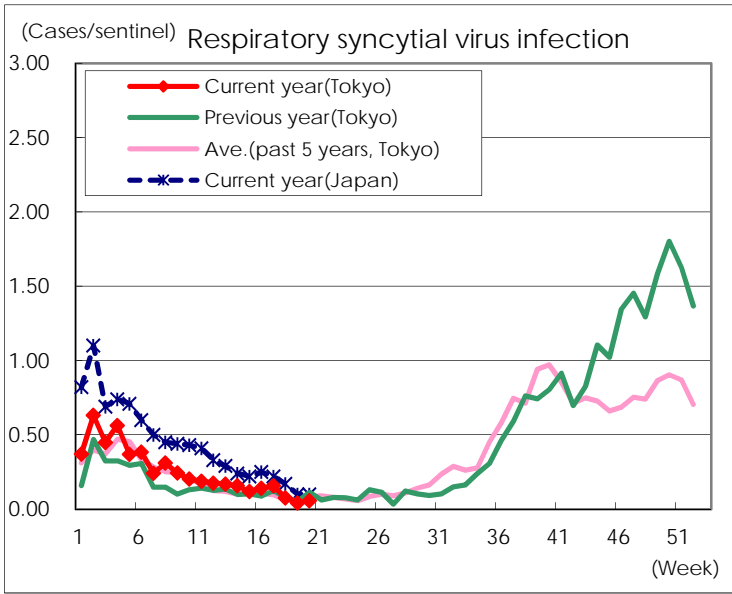
Category	Diseases	Tokyo					Japan	
		17th	18th	19th	20th	Cum 2015	20th	Cum 2015
V	Amebiasis	3	3	1	4	67	8	372
	Viral hepatitis(excluding hepatitis A and E)	2			2	17	3	77
	CRE infection	5	5	2	3	54	27	446
	Acute encephalitis(excluding JE and WNE)				1	22	4	208
	Cryptosporidiosis					2		5
	Creutzfeldt-Jakob disease	1	1			9	2	62
	Severe invasive streptococcal infections(TSLS)		2			30	2	190
	Acquired immunodeficiency syndrome (AIDS)	10	2	7	7	150	18	488
	Giardiasis	1			2	7	3	31
	Invasive <i>Haemophilus influenzae</i> disease	2		1		10	1	96
	Invasive meningococcal disease					4	1	15
	Invasive pneumococcal disease	4	11	8	10	147	57	1,087
	Varicella (limited to hospitalized case)	2	1		2	14	3	103
	Congenital rubella syndrome							
	Syphilis	21	20	17	24	317	31	741
	Disseminated cryptococcosis					3	1	46
	Tetanus					1	2	28
	Vancomycin-resistant <i>S. aureus</i> infection							
	Vancomycin-resistant <i>Enterococcus</i> infection						1	20
Rubella	1			1	15	3	75	
Measles	1	1			6		18	
MDRA infection				1	2	1	7	

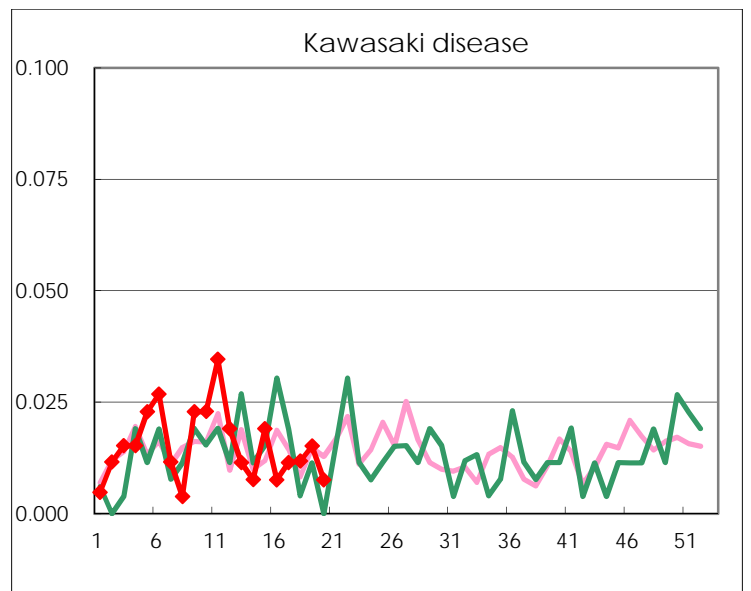
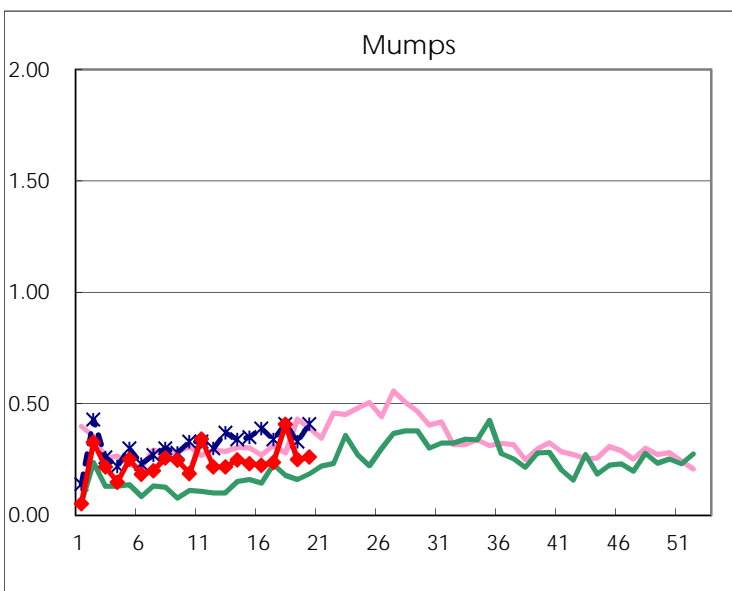
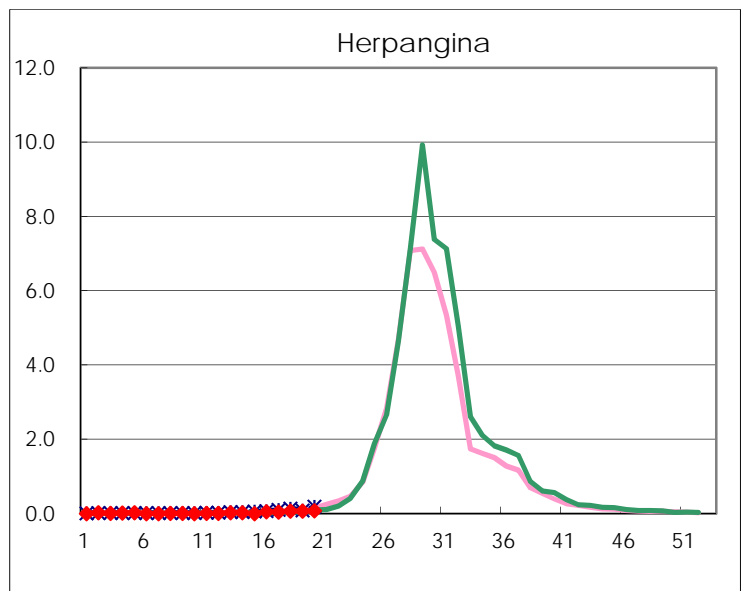
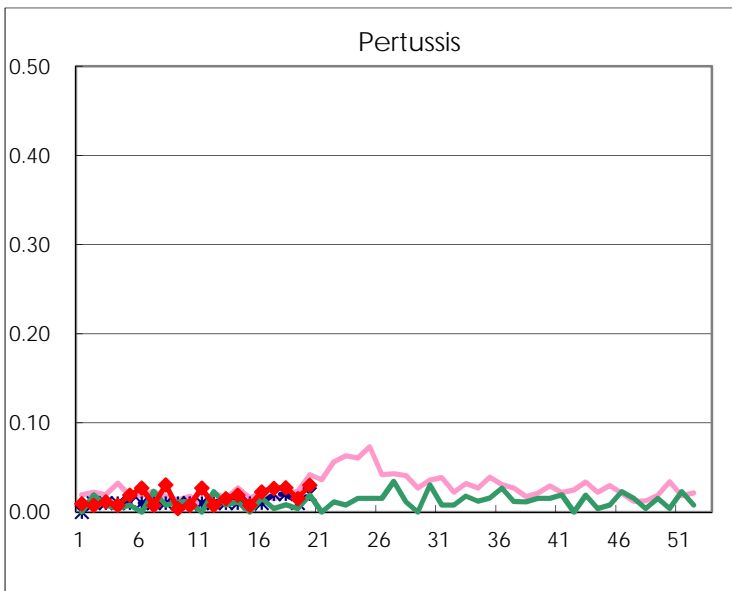
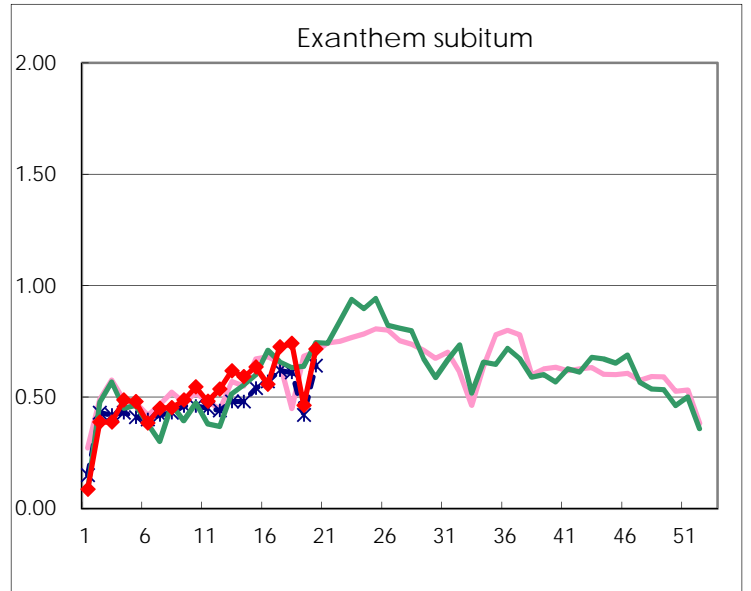
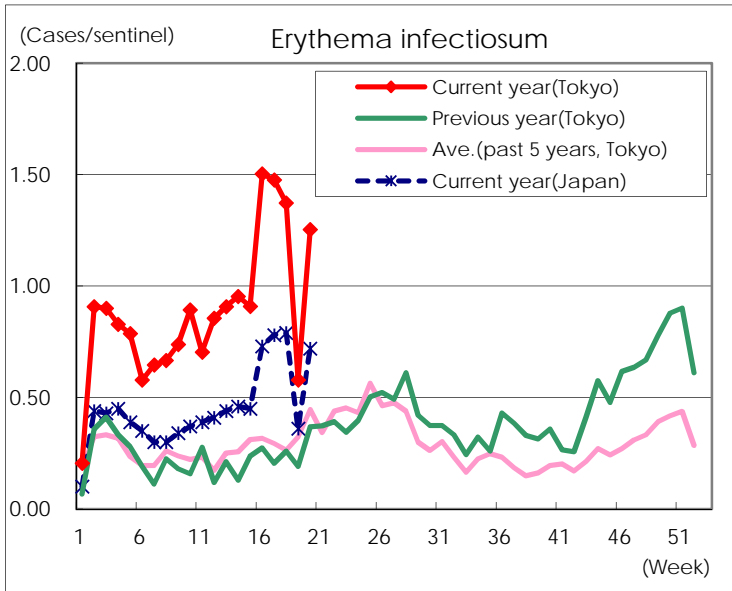
Number of patients with the diseases to be reported
by the designated clinics and hospitals

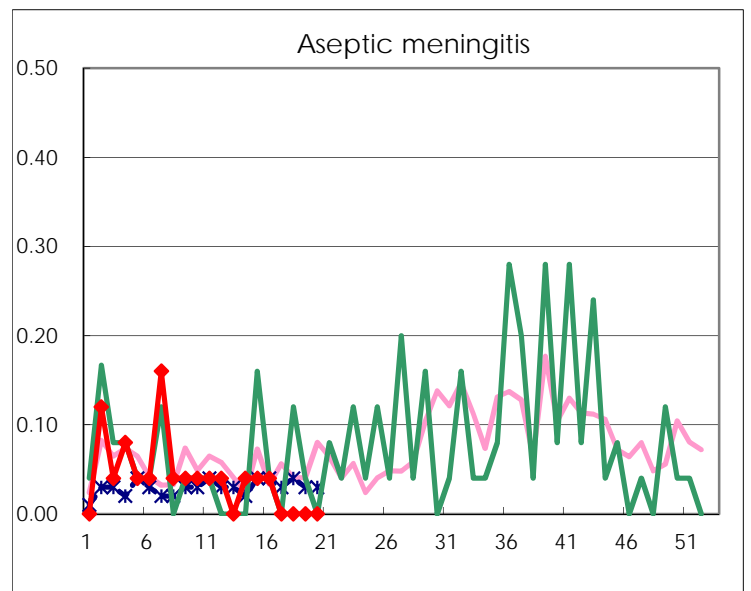
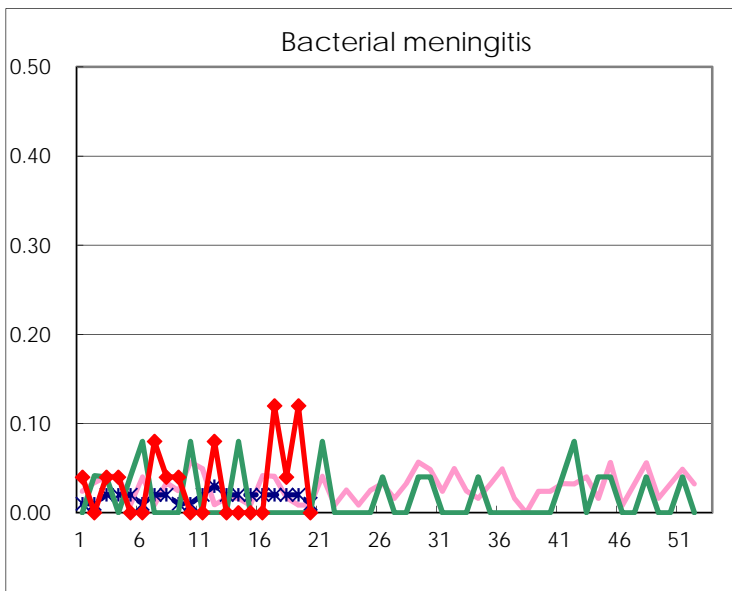
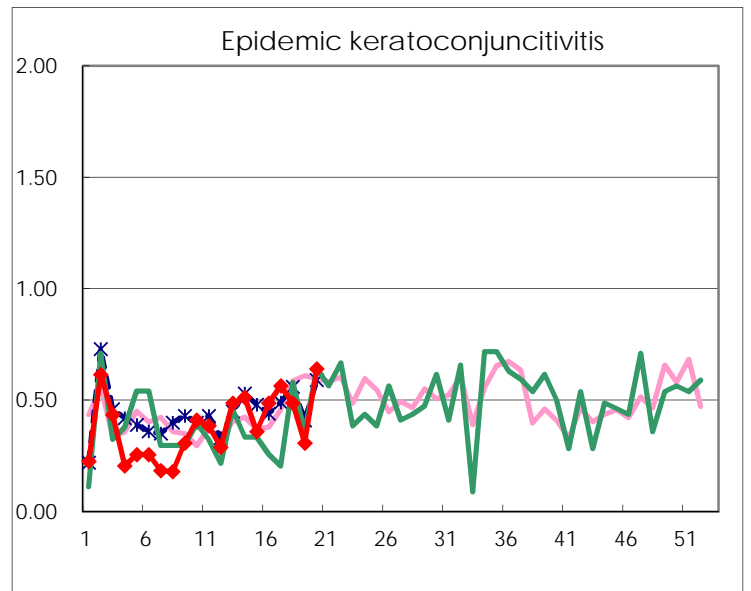
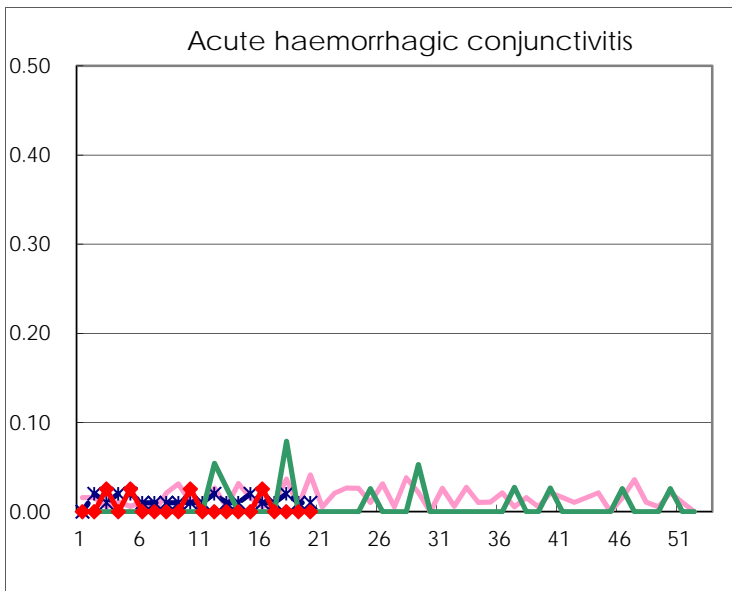
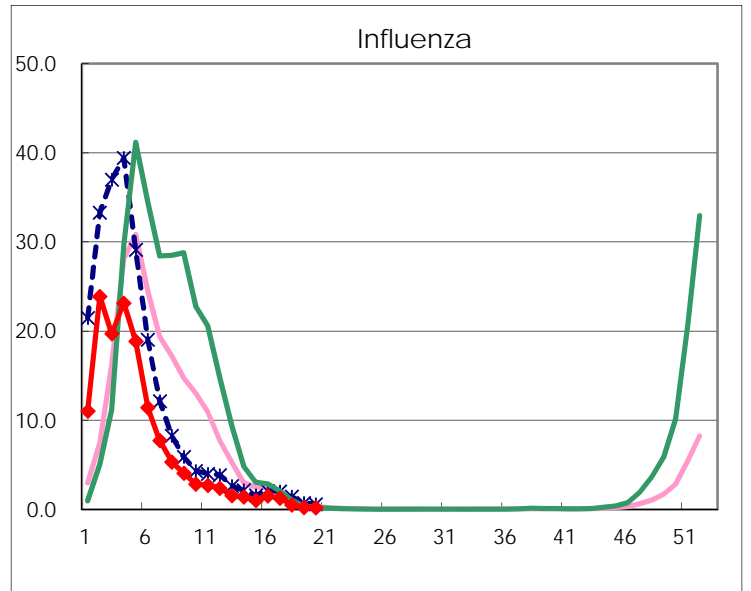
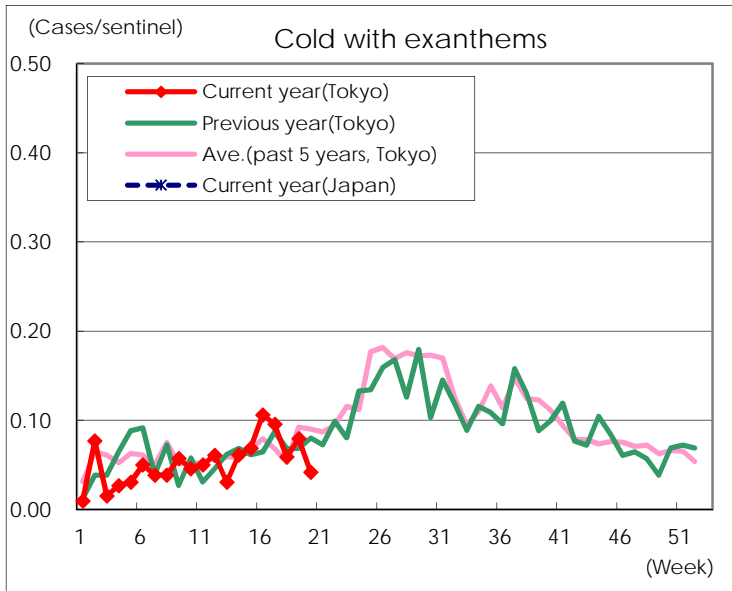
Diseases	Tokyo				
	17th	18th	19th	20th	/sentinel
Respiratory syncytial virus infection	41	19	11	15	0.06
Pharyngoconjunctival fever	100	133	88	139	0.53
Group A streptococcal pharyngitis	1,033	948	443	1,092	4.14
Infectious gastroenteritis	2,209	1,825	1,024	1,766	6.69
Chickenpox	160	162	141	154	0.58
Hand, foot, and mouth disease	58	75	64	85	0.32
Erythema infectiosum	387	350	153	331	1.25
Exanthem subitum	190	189	122	189	0.72
Pertussis	7	7	4	8	0.03
Herpangina	12	18	18	21	0.08
Mumps	62	104	66	69	0.26
Kawasaki disease	3	3	4	2	0.01
Cold with exanthems	25	15	21	11	0.04
Influenza	528	202	96	71	0.17
Acute hemorrhagic conjunctivitis					
Epidemic keratoconjunctivitis	22	18	12	25	0.64
Bacterial meningitis	3	1	3		
Aseptic meningitis					
<i>Mycoplasma pneumoniae</i>	8	3	5	6	0.24
<i>Chlamydial pneumoniae</i> (excluding psittacosis)	1	1	1		
Infectious gastroenteritis (only by Rotavirus)	4	4	7	2	0.08
Influenza-Associated Hospitalizations	3	2	1	1	0.04

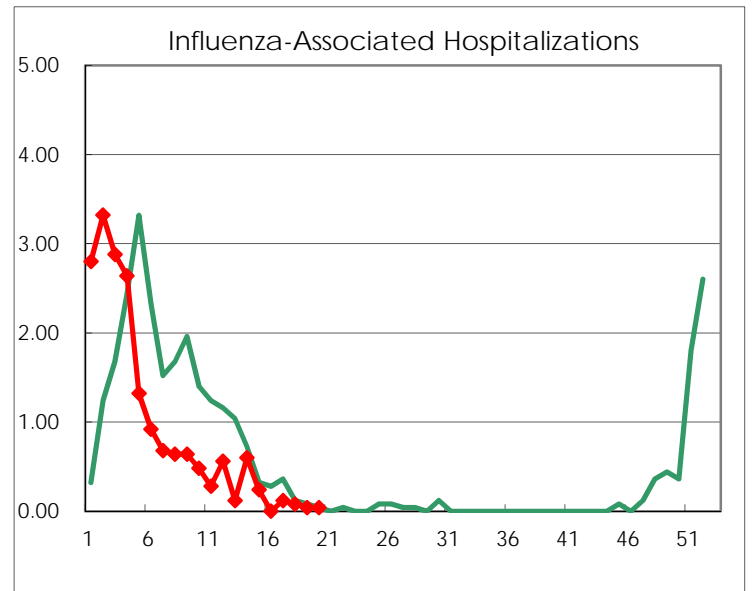
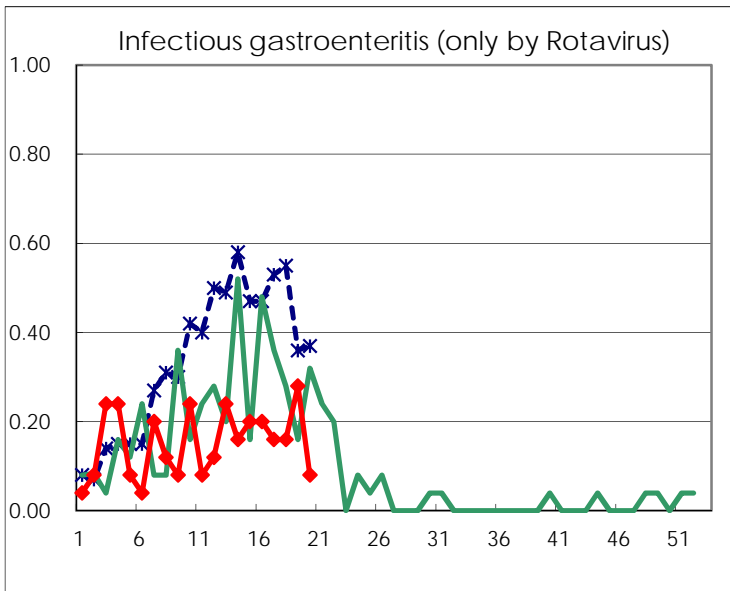
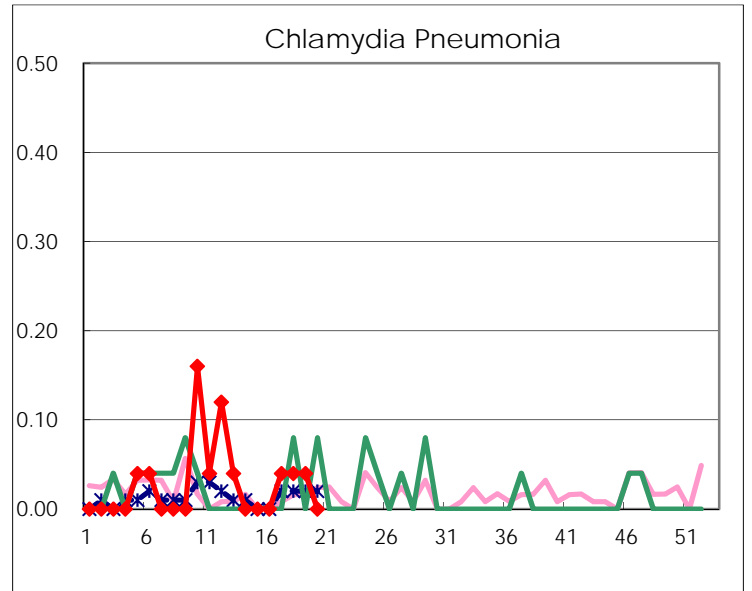
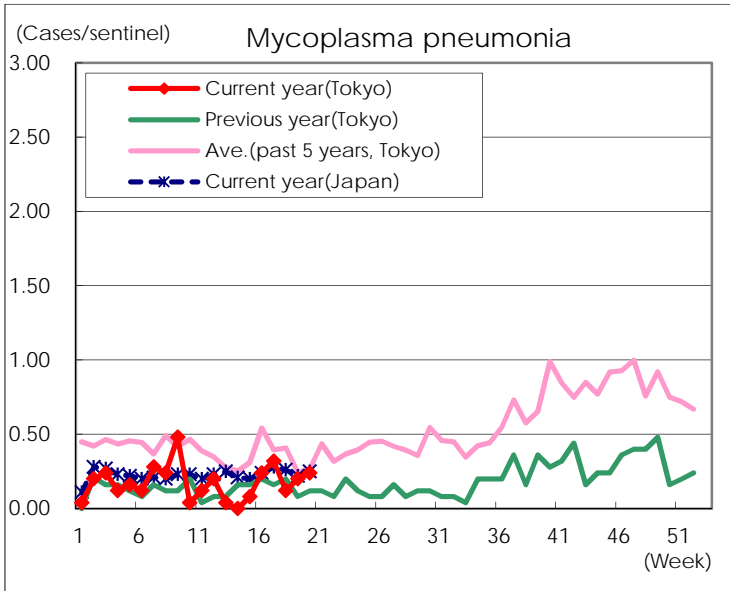
(Blank means 0.)

Disease Trend Graph (weekly reported cases per sentinel in comparison)









Number of sentinel facilities for weekly reporting		
Types of sentinels	Number of sentinels	Sentinels having reported
Pediatric	264	264
Influenza	419	418
Ophthalmic	39	39
Specially-designated	25	25