

25 June 2015 / Number 25

Surveillance System in Tokyo, Japan

The infectious diseases which all physicians must report

All physicians must report to health centers the incidence of the diseases which are shown at page one. Health centers electronically report the individual cases to Tokyo Metropolitan Infectious Disease Surveillance Center.

The infectious diseases required to be reported by the sentinels

The numbers of patients who visit the sentinel clinics or hospitals during a week are reported to health centers in Tokyo. And they electronically report the numbers to Tokyo Metropolitan Infectious Disease Surveillance Center. We have about 500 sentinel clinics and hospitals in Tokyo.

Tokyo Metropolitan Institute of Public Health

TEL:81-3-3363-3213 FAX:81-3-5332-7365

e-mail:www@tokyo-eiken.go.jp

URL:idsc.tokyo-eiken.go.jp/

Number of patients with the diseases which all physicians must report

Category	Diseases	Tokyo					Japan	
		22nd	23rd	24th	25th	Cum 2015	25th	Cum 2015
I	Ebola hemorrhagic fever							
	Crimean-Congo hemorrhagic fever							
	Smallpox							
	South American hemorrhagic fever							
	Plague							
	Marburg disease							
	Lassa fever							
II	Acute poliomyelitis							
	Tuberculosis	82	100	74	80	1,744	378	11,064
	Diphtheria							
	Severe Acute Respiratory Syndrome(SARS)							
	Middle East Respiratory Syndrome (MERS)							
	Avian influenza H5N1							
	Avian influenza H7N9							
III	Cholera							3
	Shigellosis		4	3	1	29	3	66
	Enterohemorrhagic Escherichia coli infection	5	5	11	16	61	93	747
	Typhoid fever					7		20
	Paratyphoid fever	1			1	5	2	22
IV	Hepatitis E		2		1	16	4	91
	West Nile fever							
	Hepatitis A	1	3	2	2	27	4	137
	Echinococcosis					1		8
	Yellow fever							
	Psittacosis							4
	Omsk hemorrhagic fever							
	Relapsing fever							
	Kyasanur forest disease							
	Q fever							
	Rabies							
	Coccidioidomycosis							1
	Monkeypox							
	Severe Fever with Thrombocytopenia Syndrome							24
	Hemorrhagic fever with renal syndrome							
	Western equine encephalitis							
	Tick-borne encephalitis							
	Anthrax							
	Chikungunya fever				1	5	1	8
	Scrub typhus(Tsutsugamushi disease)					1	1	65
	Dengue fever		2	1	2	31	3	110
	Eastern equine encephalitis							
	Avian influenza (excluding H5N1 and H7N9)							
	Nipah virus infection							
	Japanese spotted fever						7	56
	Japanese encephalitis							
	Hantavirus pulmonary syndrome							
	Herpes B virus infection							
	Glanders							
	Brucellosis					1		3
	Venezuelan equine encephalitis							
	Hendra virus infection							
	Epidemic typhus							
Botulism								
Malaria		2		1	7	2	15	
Tularemia							1	
Lyme disease							3	
Lyssavirus infection(excluding rabies)								
Rift valley fever								
Melioidosis								
Legionellosis	2	1	4	2	44	36	547	
Leptospirosis					5		6	
Rocky mountain spotted fever								

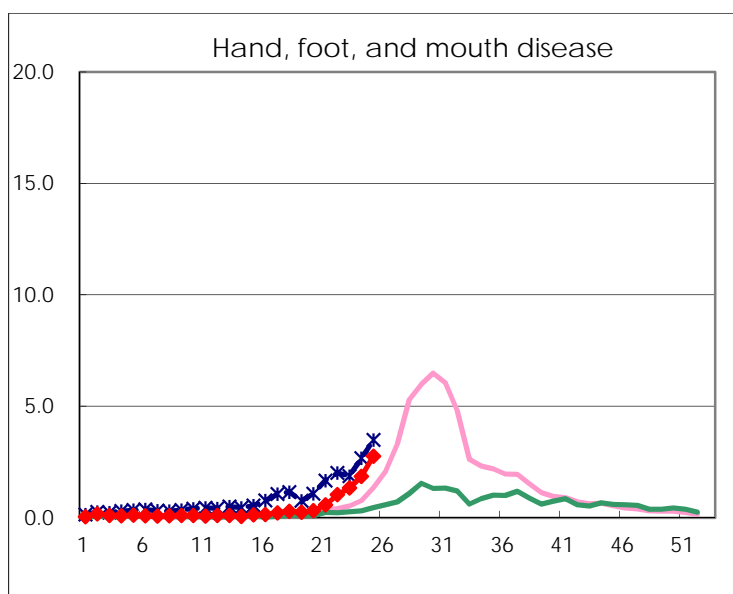
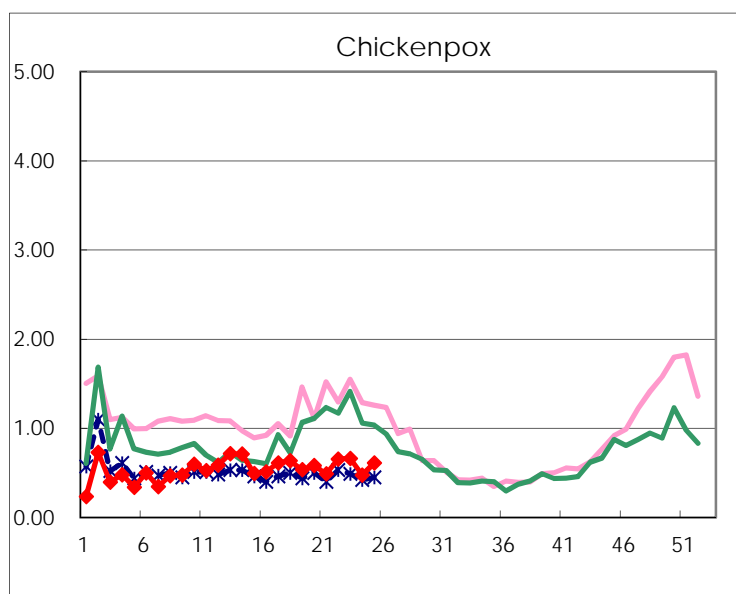
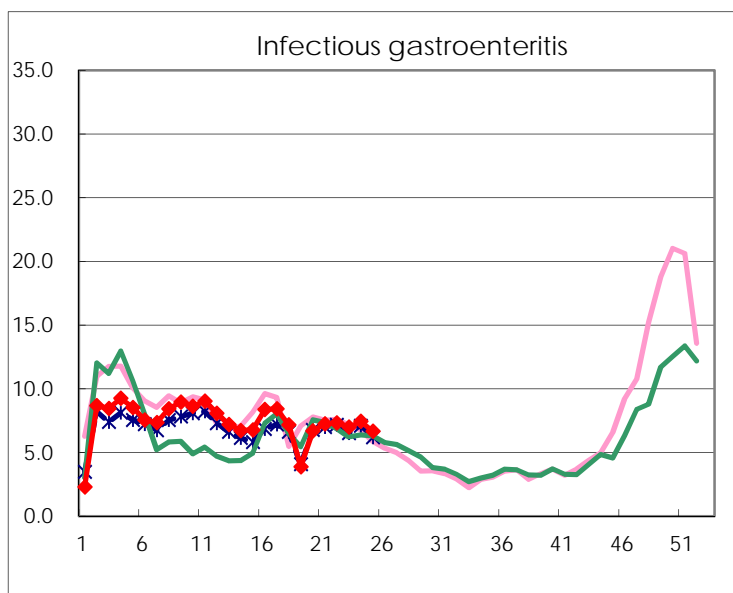
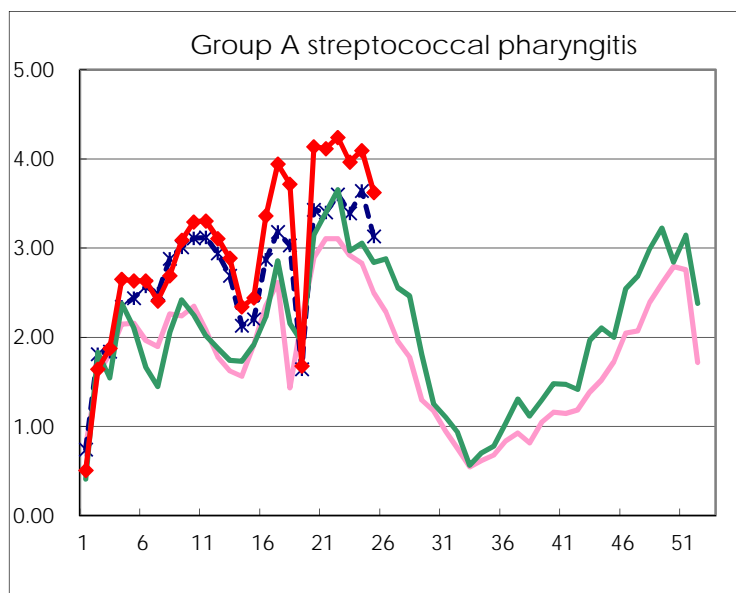
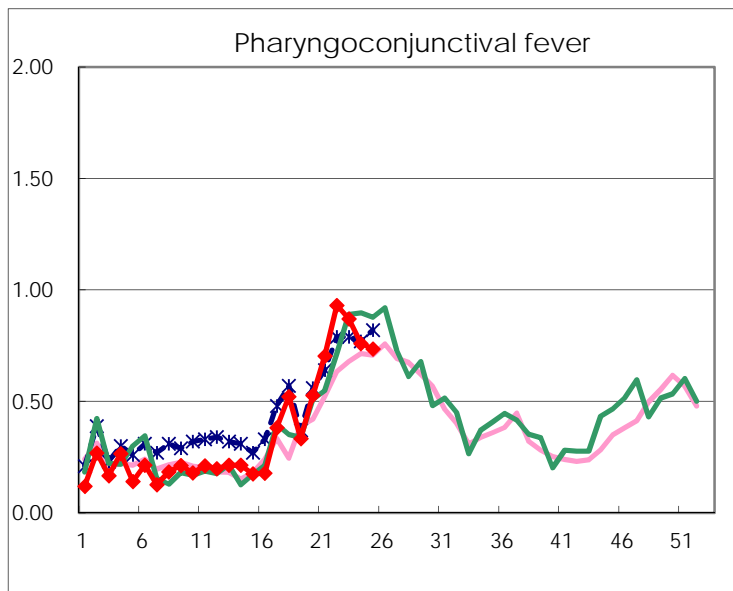
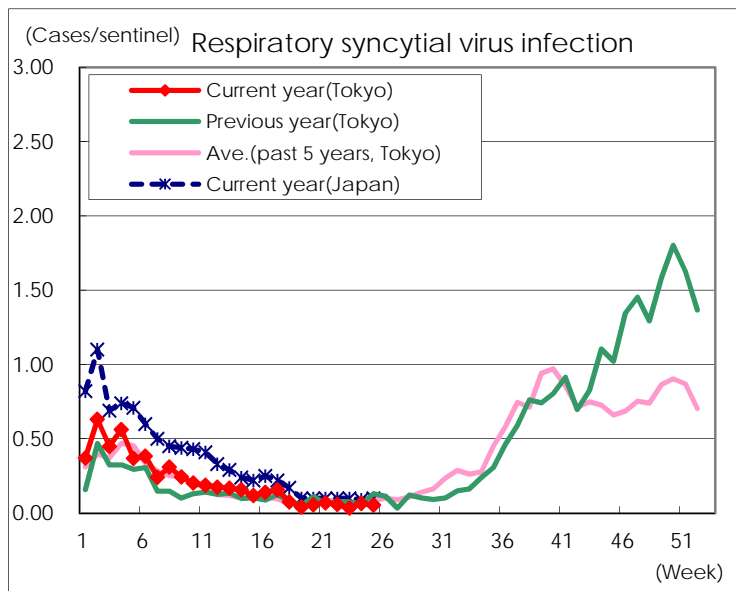
Category	Diseases	Tokyo				Japan		
		22nd	23rd	24th	25th	Cum 2015	25th	Cum 2015
V	Amebiasis	5	6	6	5	91	13	502
	Viral hepatitis(excluding hepatitis A and E)	3	3	2	2	28	3	116
	CRE infection	2	2	3	4	72	11	590
	Acute encephalitis(excluding JE and WNE)	2				26	5	255
	Cryptosporidiosis			1		3		8
	Creutzfeldt-Jakob disease	1				10	2	80
	Severe invasive streptococcal infections(TSLS)	1			1	34	7	229
	Acquired immunodeficiency syndrome (AIDS)	10	10	6	9	196	19	643
	Giardiasis	1		1		9	1	36
	Invasive <i>Haemophilus influenzae</i> disease		1	1		13	2	122
	Invasive meningococcal disease	1				6		18
	Invasive pneumococcal disease	8	6	5	7	185	21	1,329
	Varicella (limited to hospitalized case)		3	2	2	23	1	139
	Congenital rubella syndrome							
	Syphilis	18	19	24	25	428	36	1,003
	Disseminated cryptococcosis		1	2		6		57
	Tetanus					1	2	46
	Vancomycin-resistant <i>S. aureus</i> infection							
	Vancomycin-resistant Enterococcus infection	1				1	1	25
	Rubella			1	1	17	5	91
Measles	1	1		1	9	2	24	
MDRA infection	1				4		15	

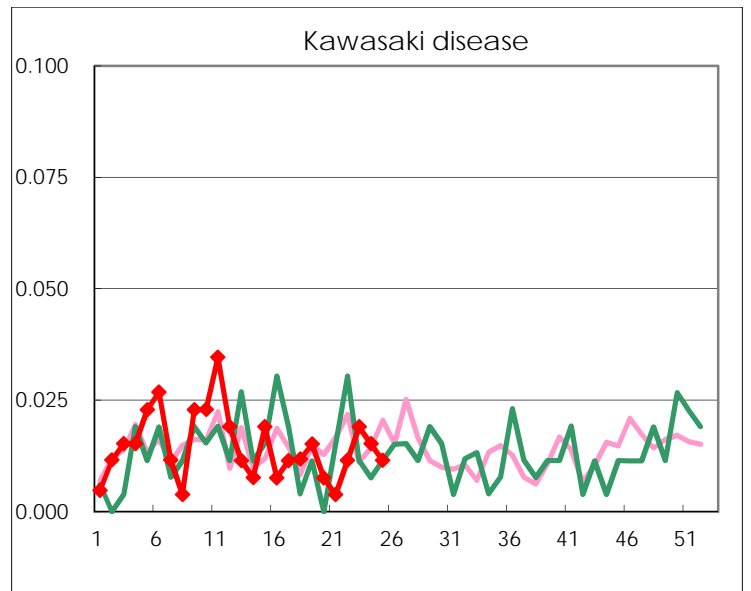
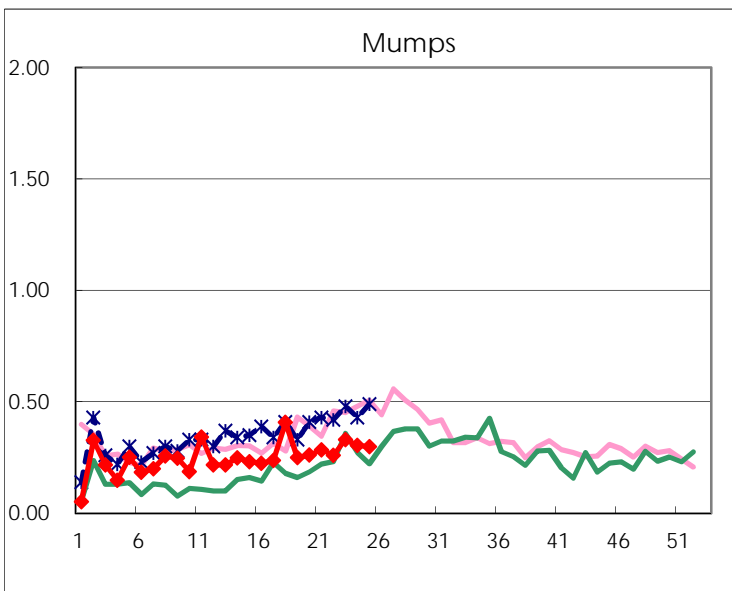
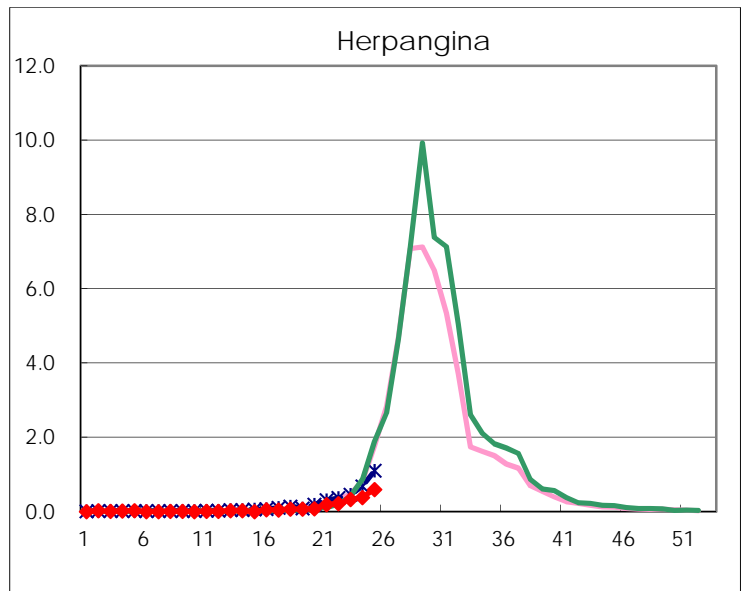
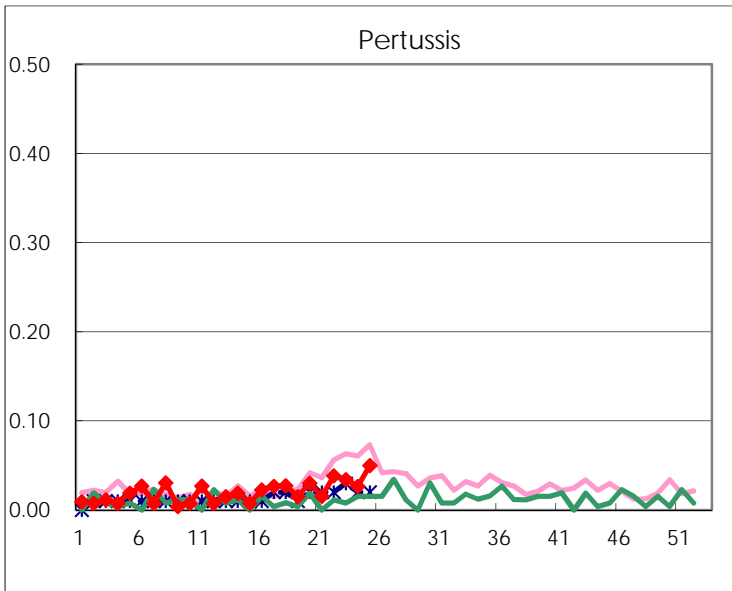
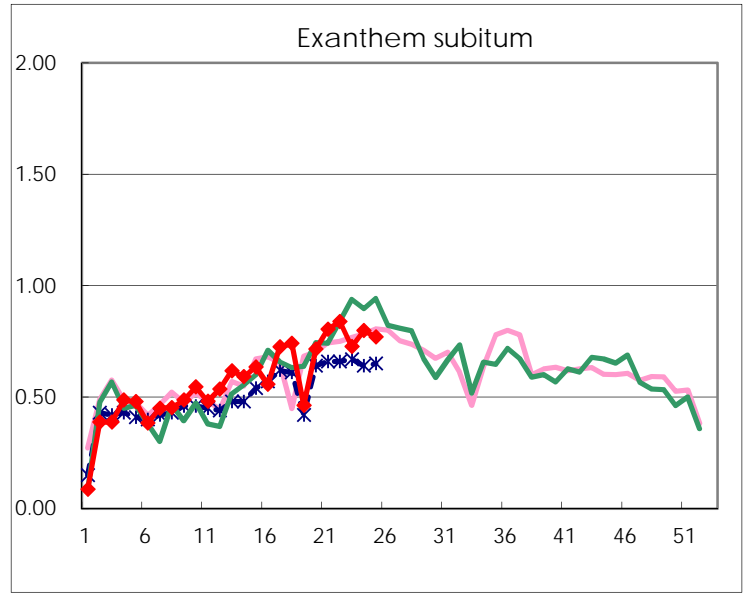
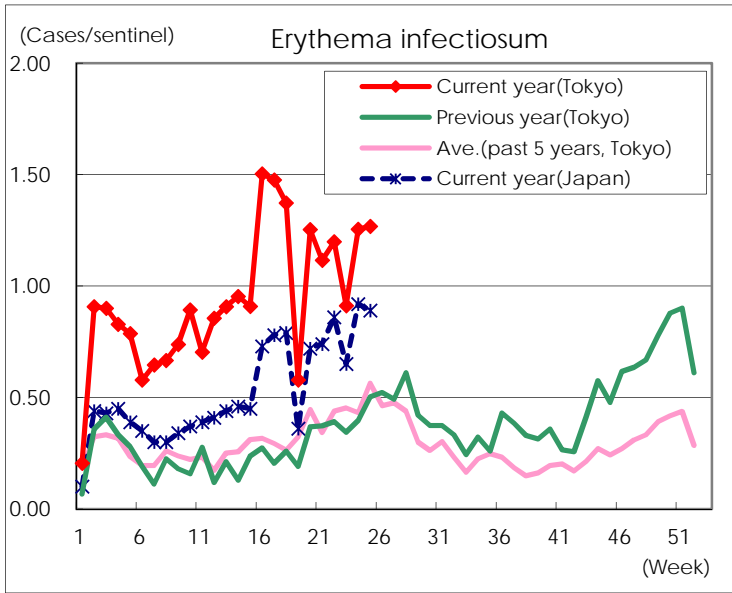
Number of patients with the diseases to be reported
by the designated clinics and hospitals

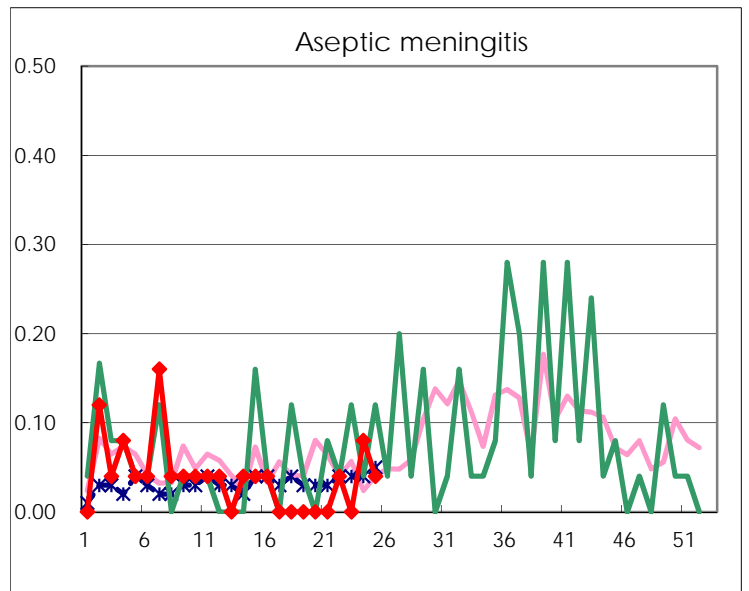
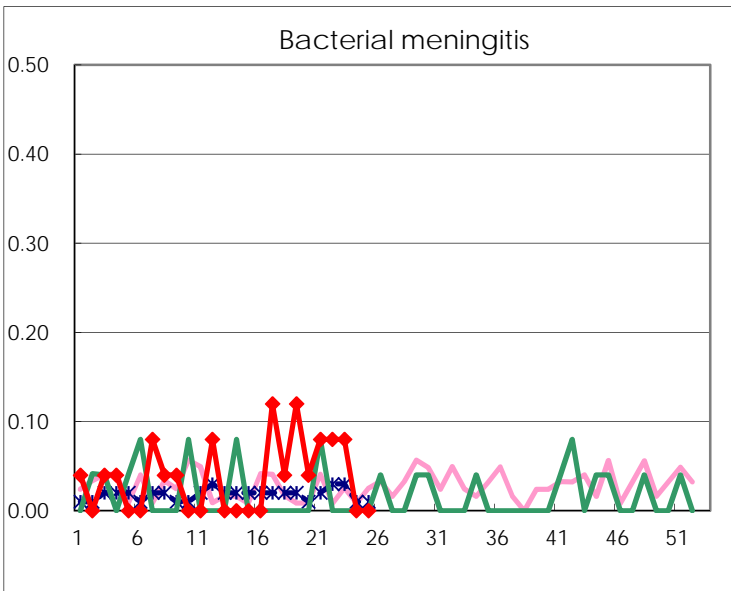
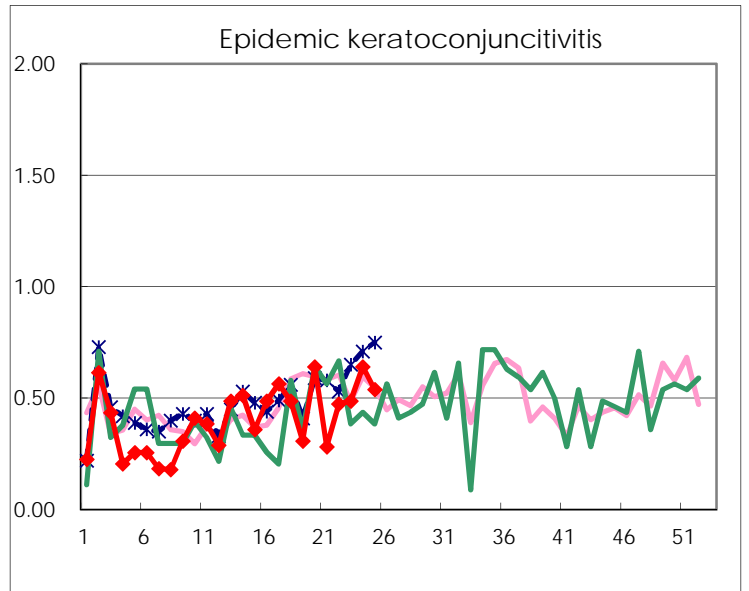
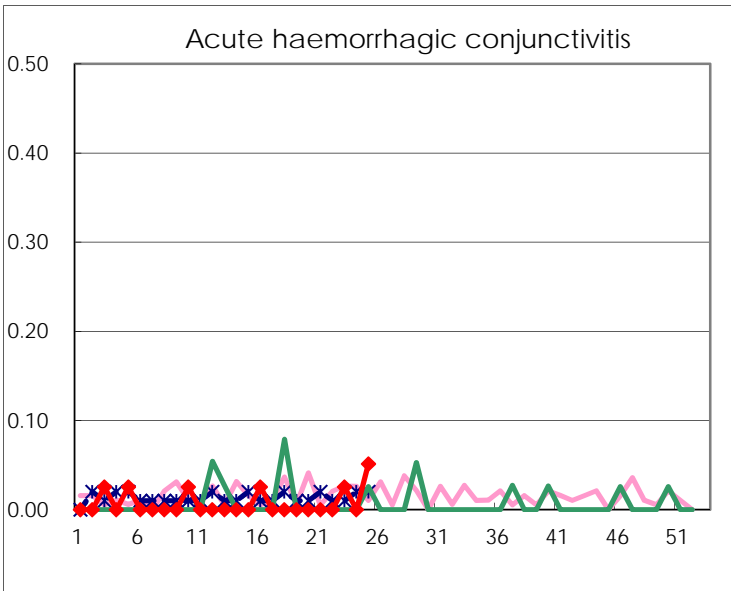
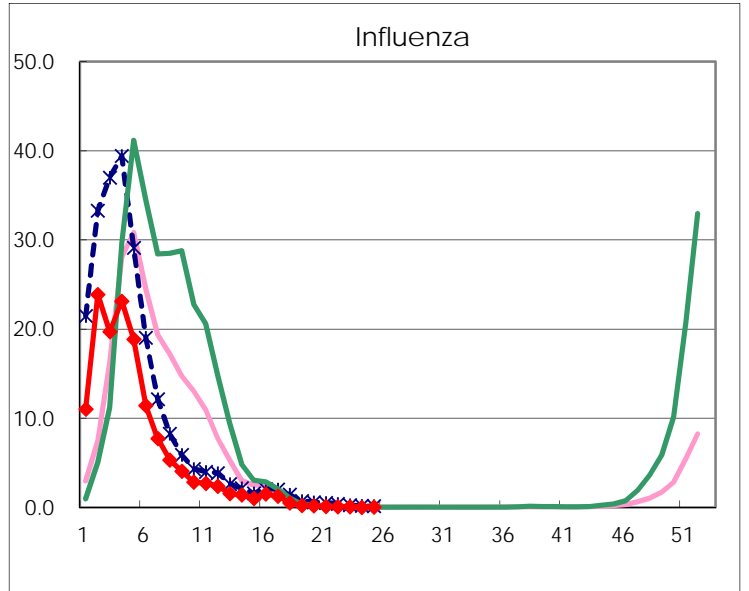
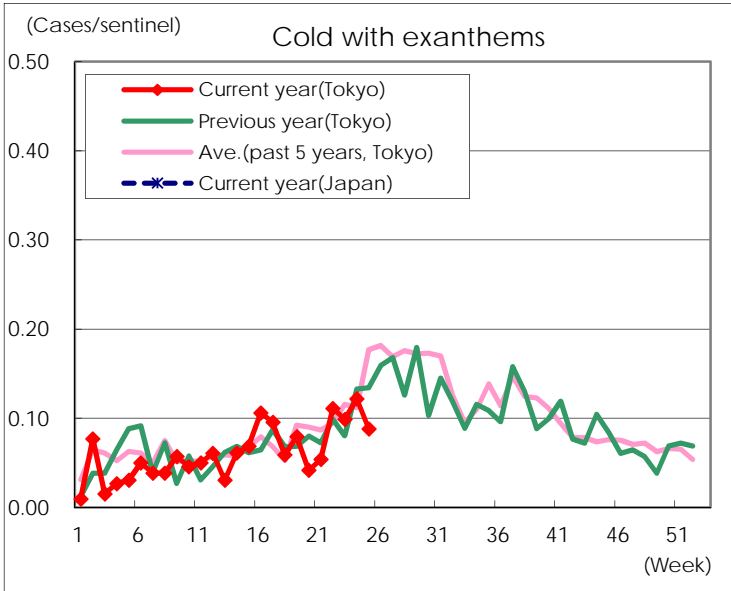
Diseases	Tokyo				
	22nd	23rd	24th	25th	/sentinel
Respiratory syncytial virus infection	15	9	17	14	0.05
Pharyngoconjunctival fever	243	229	200	192	0.74
Group A streptococcal pharyngitis	1,107	1,043	1,077	946	3.62
Infectious gastroenteritis	1,911	1,836	1,957	1,737	6.66
Chickenpox	171	174	125	159	0.61
Hand, foot, and mouth disease	270	351	489	721	2.76
Erythema infectiosum	313	240	330	331	1.27
Exanthem subitum	219	191	210	201	0.77
Pertussis	10	9	7	13	0.05
Herpangina	56	86	101	156	0.60
Mumps	68	87	80	78	0.30
Kawasaki disease	3	5	4	3	0.01
Cold with exanthems	29	26	32	23	0.09
Influenza	36	34	8	21	0.05
Acute hemorrhagic conjunctivitis		1		2	0.05
Epidemic keratoconjunctivitis	18	19	25	21	0.54
Bacterial meningitis	2	2			
Aseptic meningitis	1		2	1	0.04
Mycoplasma pneumonia	7	6	5	7	0.28
Chlamydial pneumonia (excluding psittacosis)	1			1	0.04
Infectious gastroenteritis (only by Rotavirus)		2	1		
Influenza-Associated Hospitalizations		2			

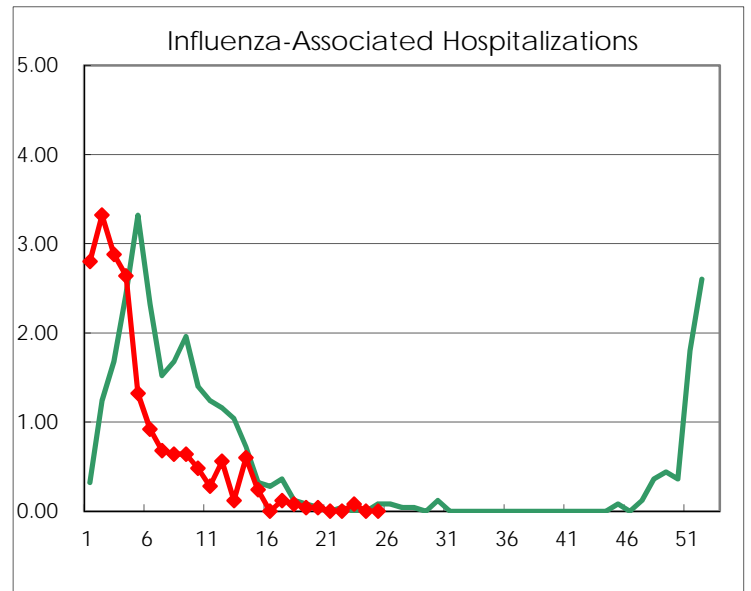
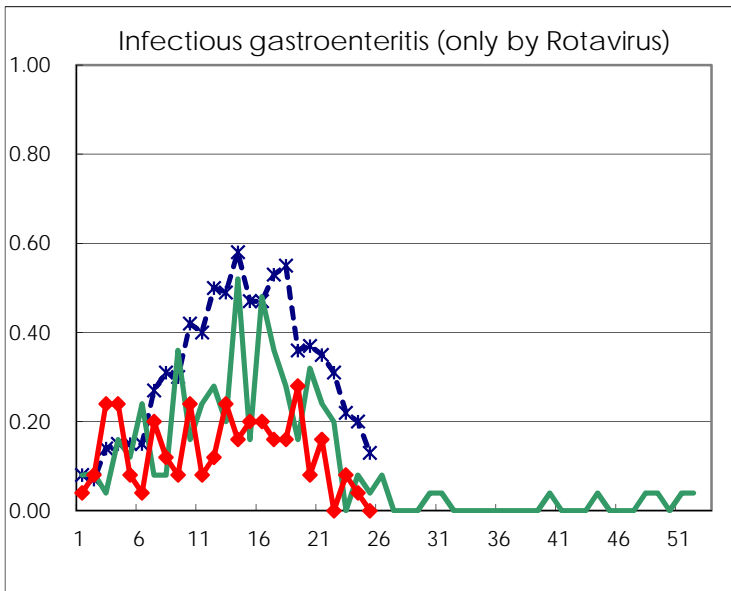
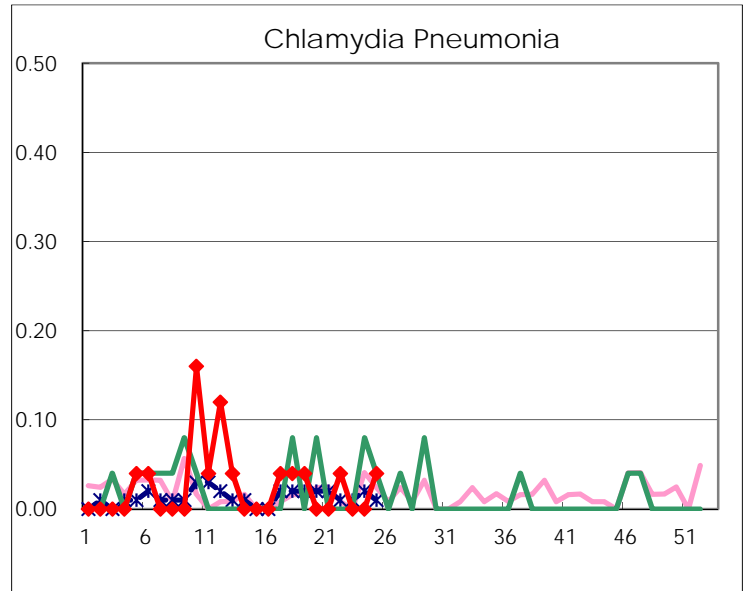
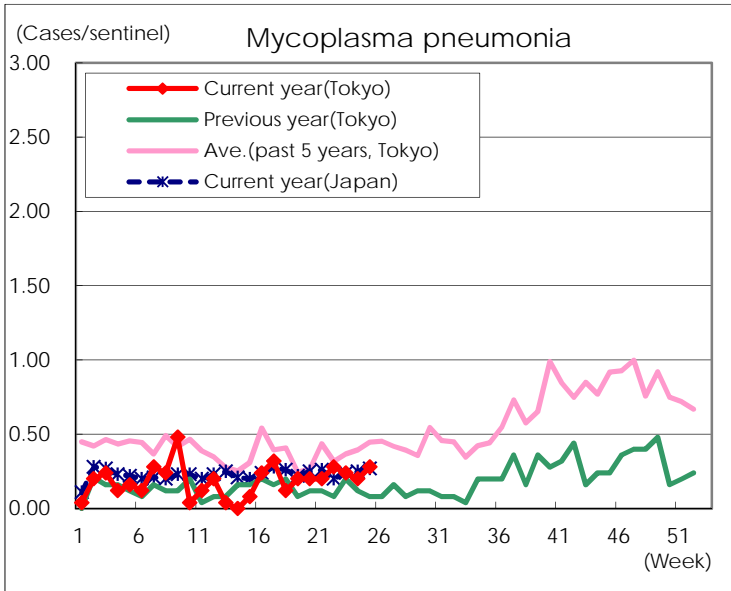
(Blank means 0.)

Disease Trend Graph (weekly reported cases per sentinel in comparison)









Number of sentinel facilities for weekly reporting		
Types of sentinels	Number of sentinels	Sentinels having reported
Pediatric	264	261
Influenza	419	413
Ophthalmic	39	39
Specially-designated	25	25