

9 July 2015 / Number 27

Surveillance System in Tokyo, Japan

The infectious diseases which all physicians must report

All physicians must report to health centers the incidence of the diseases which are shown at page one. Health centers electronically report the individual cases to Tokyo Metropolitan Infectious Disease Surveillance Center.

The infectious diseases required to be reported by the sentinels

The numbers of patients who visit the sentinel clinics or hospitals during a week are reported to health centers in Tokyo. And they electronically report the numbers to Tokyo Metropolitan Infectious Disease Surveillance Center. We have about 500 sentinel clinics and hospitals in Tokyo.

Tokyo Metropolitan Institute of Public Health

TEL:81-3-3363-3213 FAX:81-3-5332-7365

e-mail:www@tokyo-eiken.go.jp

URL:idsc.tokyo-eiken.go.jp/

Number of patients with the diseases which all physicians must report

Category	Diseases	Tokyo					Japan	
		24th	25th	26th	27th	Cum 2015	27th	Cum 2015
I	Ebola hemorrhagic fever							
	Crimean-Congo hemorrhagic fever							
	Smallpox							
	South American hemorrhagic fever							
	Plague							
	Marburg disease							
	Lassa fever							
II	Acute poliomyelitis							
	Tuberculosis	78	83	65	77	1,892	368	12,124
	Diphtheria							
	Severe Acute Respiratory Syndrome(SARS)							
	Middle East Respiratory Syndrome (MERS)							
	Avian influenza H5N1							
	Avian influenza H7N9							
III	Cholera							3
	Shigellosis	3	1	1	1	31	3	72
	Enterohemorrhagic Escherichia coli infection	11	16	16	24	101	138	1,066
	Typhoid fever					7	1	21
	Paratyphoid fever		1			5		22
IV	Hepatitis E		1		1	17	3	100
	West Nile fever							
	Hepatitis A	2	2			27	1	145
	Echinococcosis					1		8
	Yellow fever							
	Psittacosis						1	5
	Omsk hemorrhagic fever							
	Relapsing fever							
	Kyasanur forest disease							
	Q fever							
	Rabies							
	Coccidioidomycosis				1	1	1	2
	Monkeypox							
	Severe Fever with Thrombocytopenia Syndrome							28
	Hemorrhagic fever with renal syndrome							
	Western equine encephalitis							
	Tick-borne encephalitis							
	Anthrax							
	Chikungunya fever		1			5		10
	Scrub typhus(Tsutsugamushi disease)			1		2		68
	Dengue fever	1	2	1	2	34	9	121
	Eastern equine encephalitis							
	Avian influenza (excluding H5N1 and H7N9)							
	Nipah virus infection							
	Japanese spotted fever						5	65
	Japanese encephalitis							
	Hantavirus pulmonary syndrome							
	Herpes B virus infection							
	Glanders							
	Brucellosis					1		3
	Venezuelan equine encephalitis							
	Hendra virus infection							
Epidemic typhus								
Botulism								
Malaria		1		1	8	1	18	
Tularemia							1	
Lyme disease							3	
Lyssavirus infection(excluding rabies)								
Rift valley fever								
Melioidosis								
Legionellosis	4	2	2	4	50	36	637	
Leptospirosis					5		6	
Rocky mountain spotted fever								

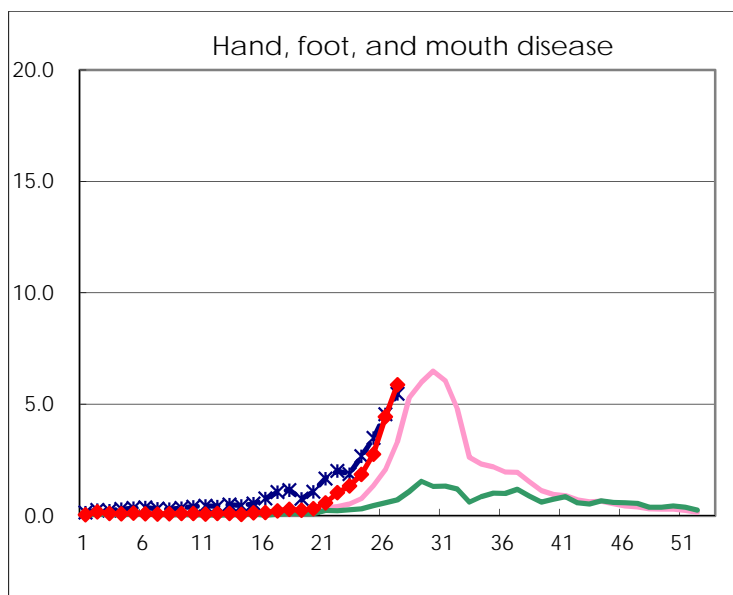
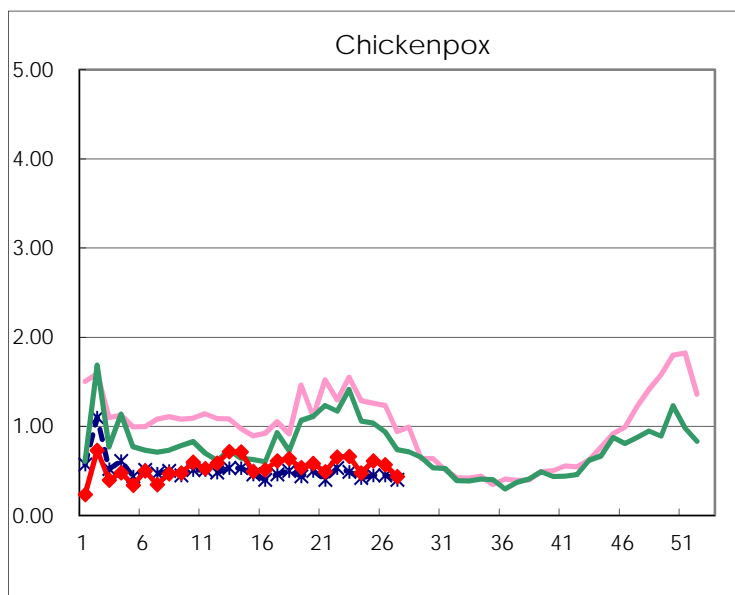
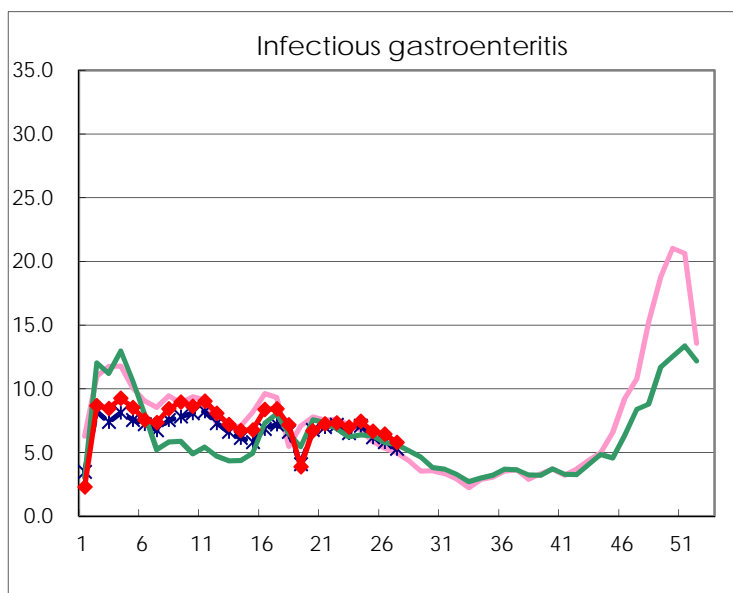
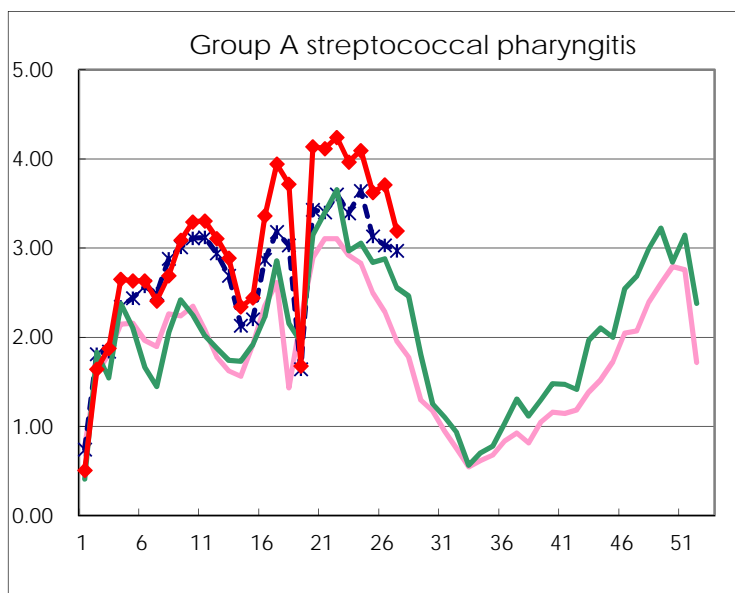
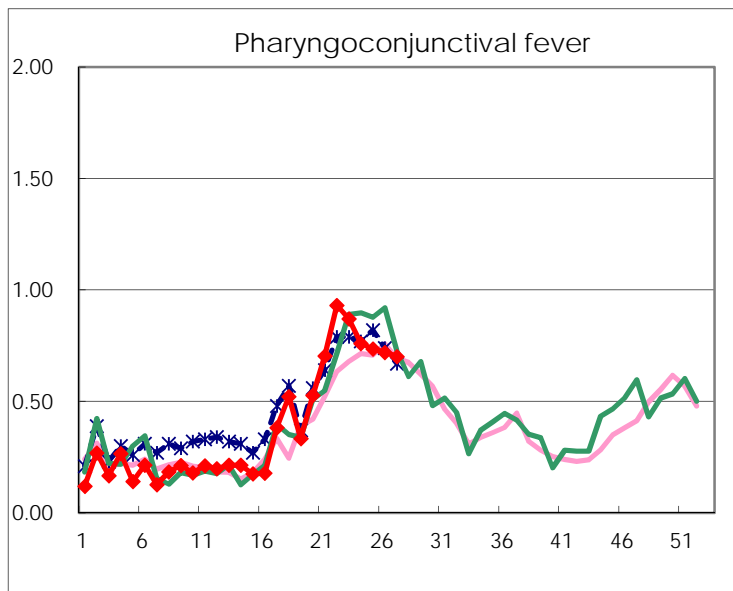
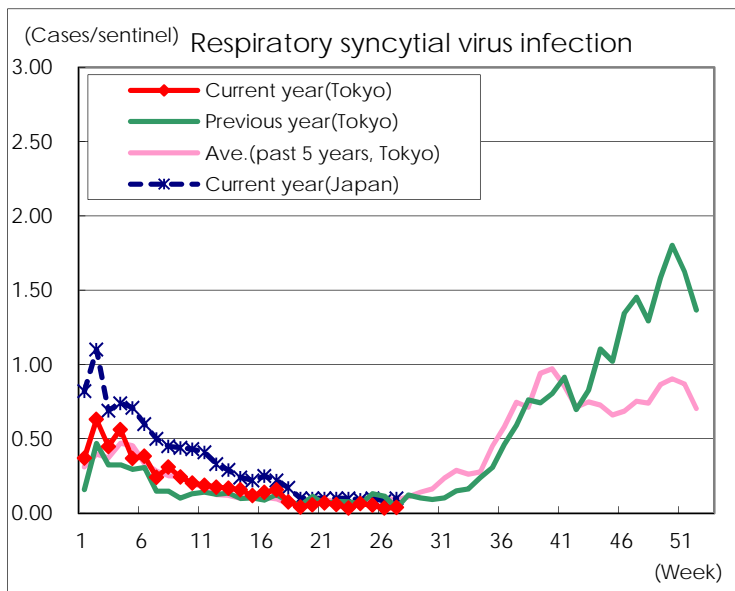
Category	Diseases	Tokyo				Cum 2015	Japan	
		24th	25th	26th	27th		27th	Cum 2015
V	Amebiasis	6	5	6	7	104	18	560
	Viral hepatitis(excluding hepatitis A and E)	2	2	1	1	30	8	127
	CRE infection	3	4	4	6	82	21	662
	Acute encephalitis(excluding JE and WNE)			1		27	2	271
	Cryptosporidiosis	1				3		8
	Creutzfeldt-Jakob disease			1	2	13	1	88
	Severe invasive streptococcal infections(TSLS)		1	2	1	37	3	246
	Acquired immunodeficiency syndrome (AIDS)	6	10	12	9	218	17	715
	Giardiasis	1			2	11	1	38
	Invasive <i>Haemophilus influenzae</i> disease	1			2	15	2	129
	Invasive meningococcal disease					6		18
	Invasive pneumococcal disease	5	7	5	5	195	18	1,392
	Varicella (limited to hospitalized case)	2	2	2	2	27	6	157
	Congenital rubella syndrome							
	Syphilis	24	25	29	17	476	46	1,144
	Disseminated cryptococcosis	2				6	2	63
	Tetanus					1	2	50
	Vancomycin-resistant <i>S. aureus</i> infection							
	Vancomycin-resistant Enterococcus infection					1		28
	Rubella	1	1	2	1	20	6	104
Measles		1			9		24	
MDRA infection				1	5	1	18	

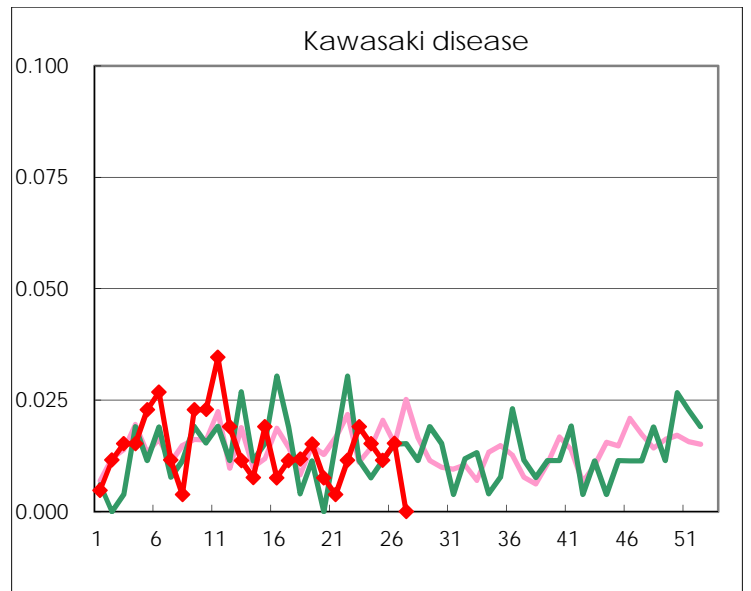
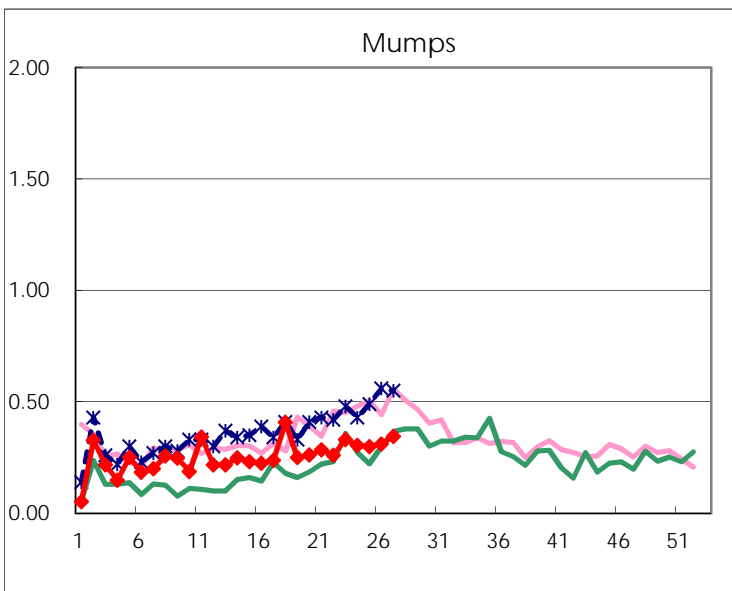
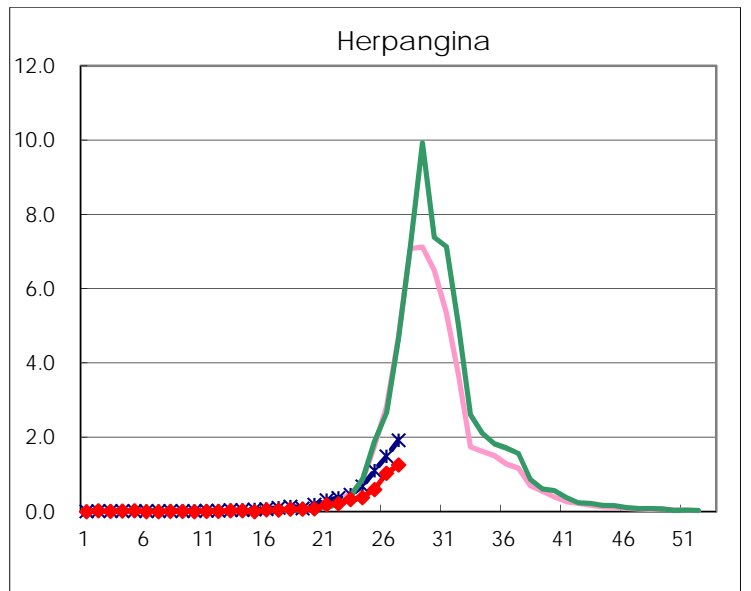
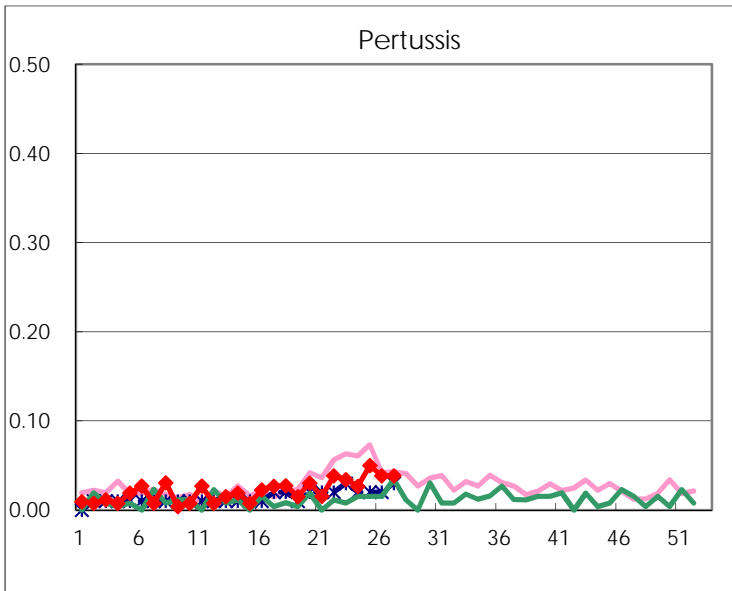
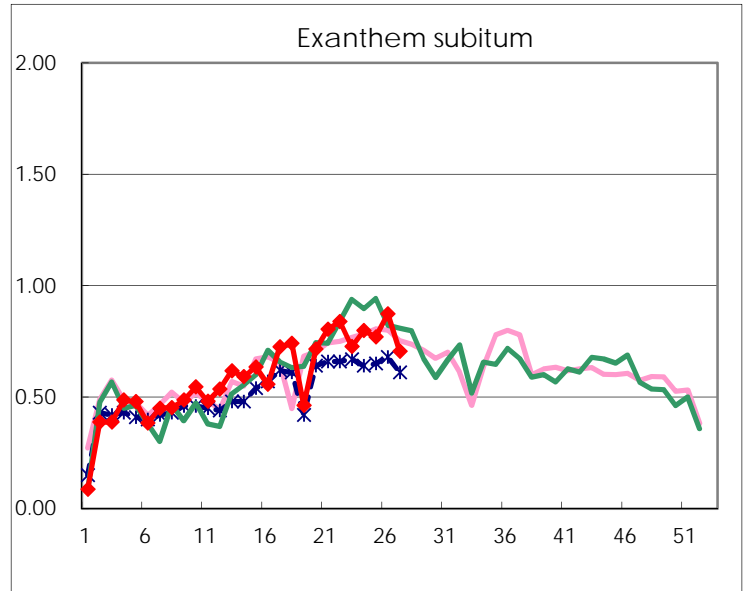
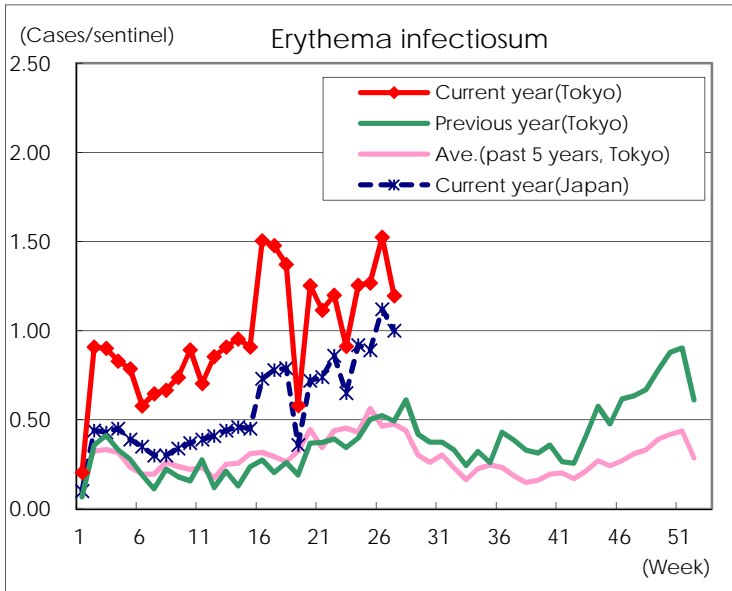
Number of patients with the diseases to be reported
by the designated clinics and hospitals

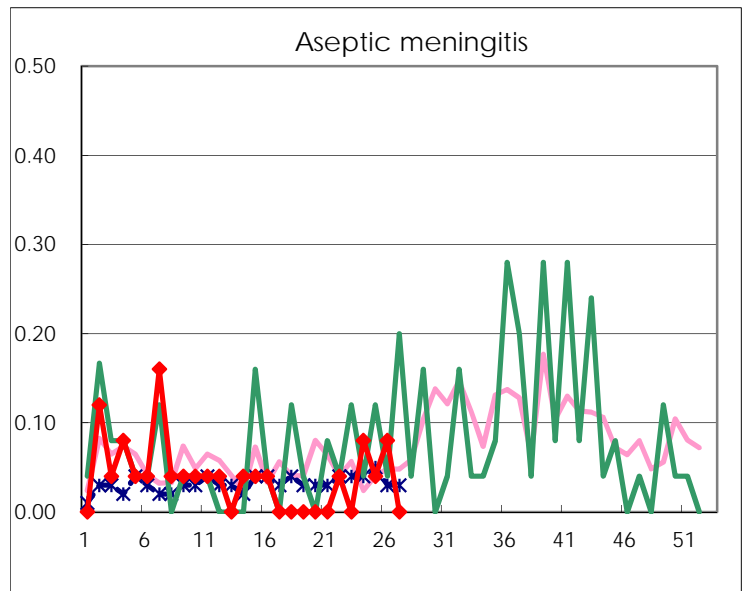
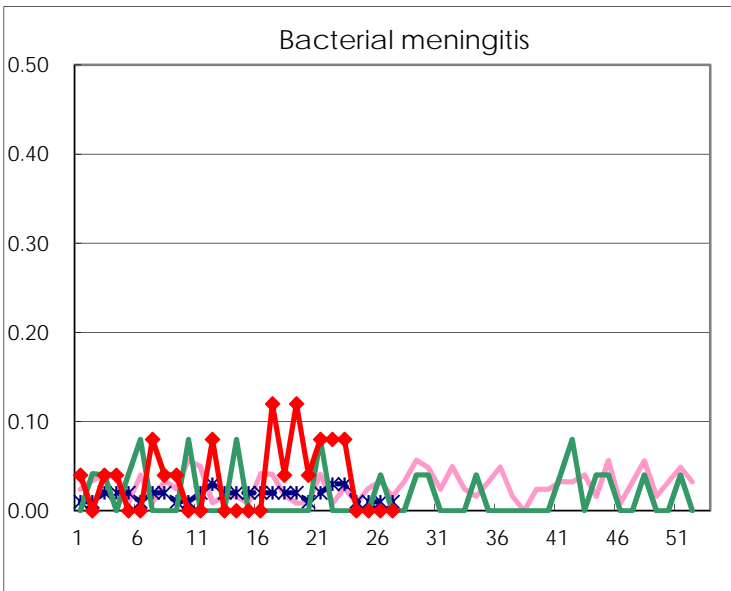
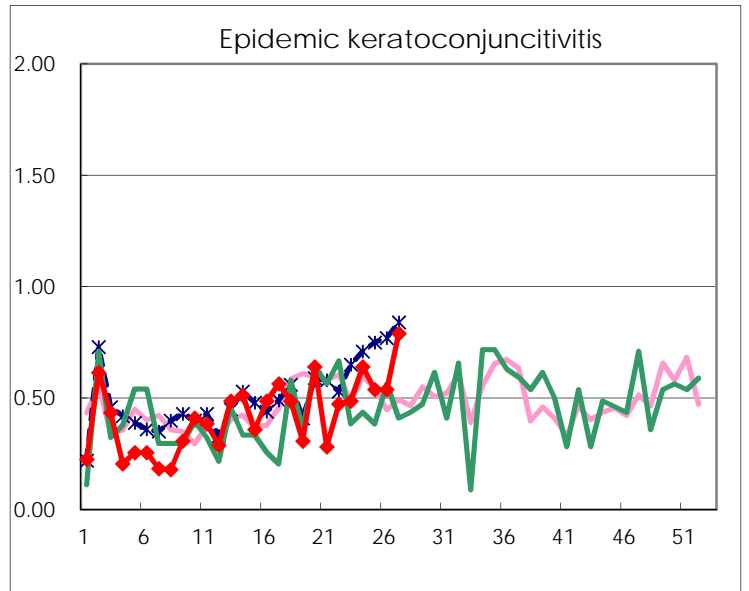
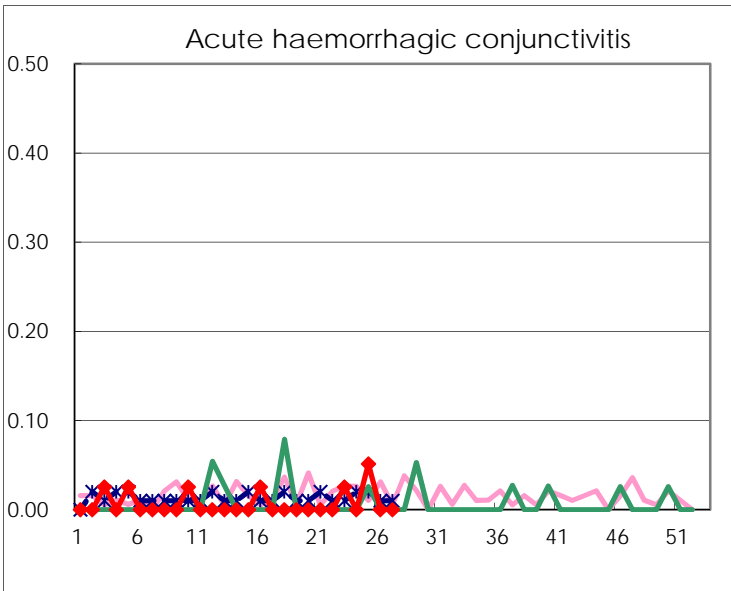
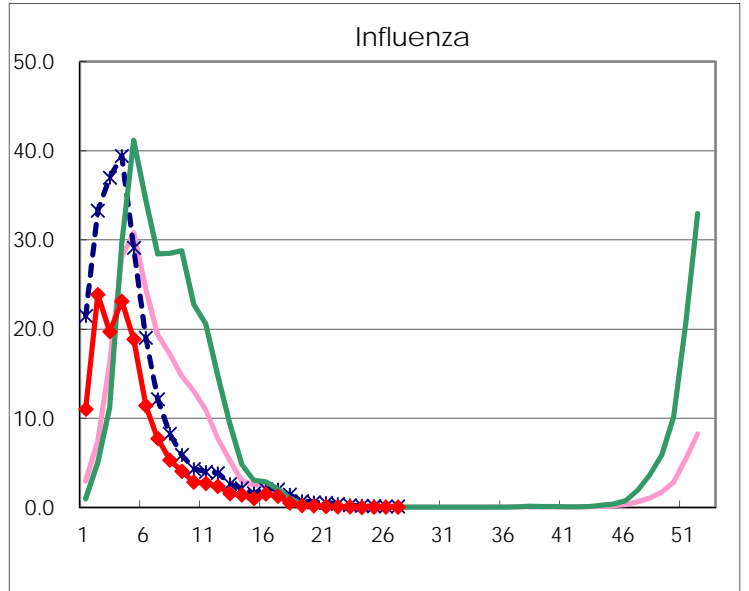
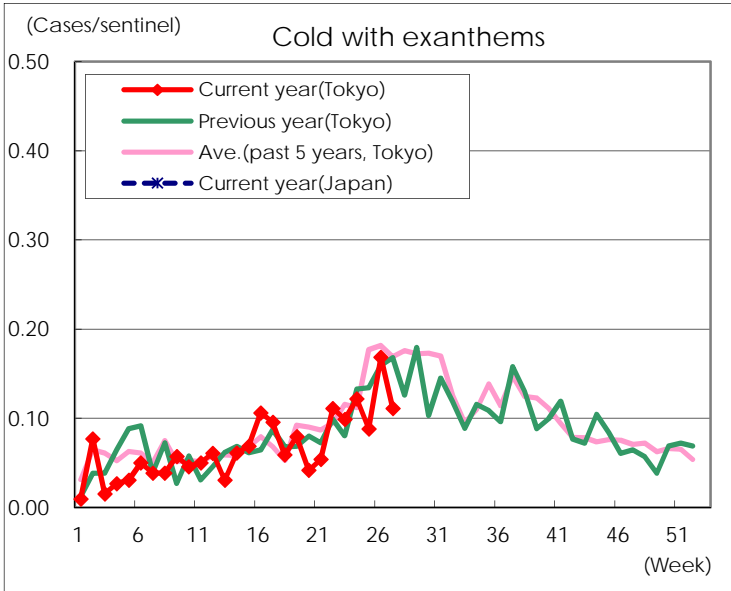
Diseases	Tokyo				
	24th	25th	26th	27th	/sentinel
Respiratory syncytial virus infection	17	14	9	10	0.04
Pharyngoconjunctival fever	200	192	188	183	0.70
Group A streptococcal pharyngitis	1,077	946	968	833	3.19
Infectious gastroenteritis	1,957	1,737	1,679	1,506	5.77
Chickenpox	125	159	148	113	0.43
Hand, foot, and mouth disease	489	721	1,158	1,533	5.87
Erythema infectiosum	330	331	398	312	1.20
Exanthem subitum	210	201	228	184	0.70
Pertussis	7	13	10	10	0.04
Herpangina	101	156	269	328	1.26
Mumps	80	78	81	90	0.34
Kawasaki disease	4	3	4		
Cold with exanthems	32	23	44	29	0.11
Influenza	8	21	13	10	0.02
Acute hemorrhagic conjunctivitis		2			
Epidemic keratoconjunctivitis	25	21	21	30	0.79
Bacterial meningitis					
Aseptic meningitis	2	1	2		
Mycoplasma pneumonia	5	7	2	8	0.32
Chlamydial pneumonia (excluding psittacosis)		1		2	0.08
Infectious gastroenteritis (only by Rotavirus)	1		1		
Influenza-Associated Hospitalizations					

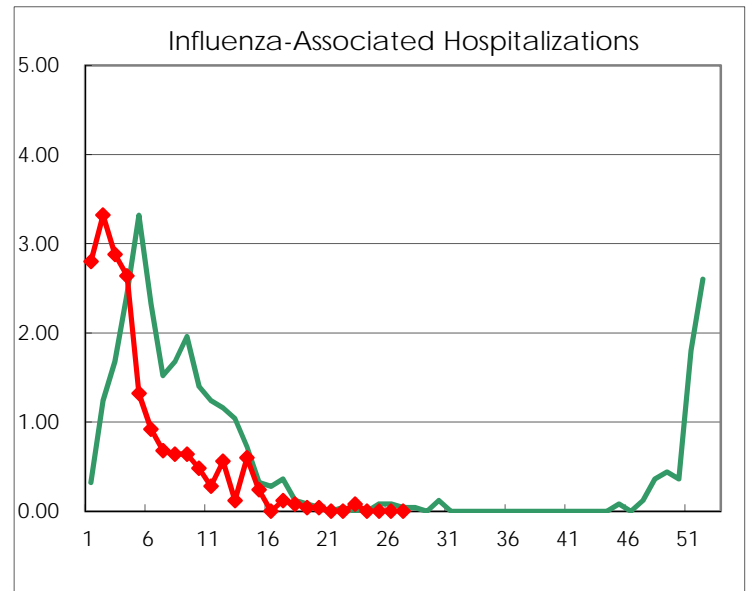
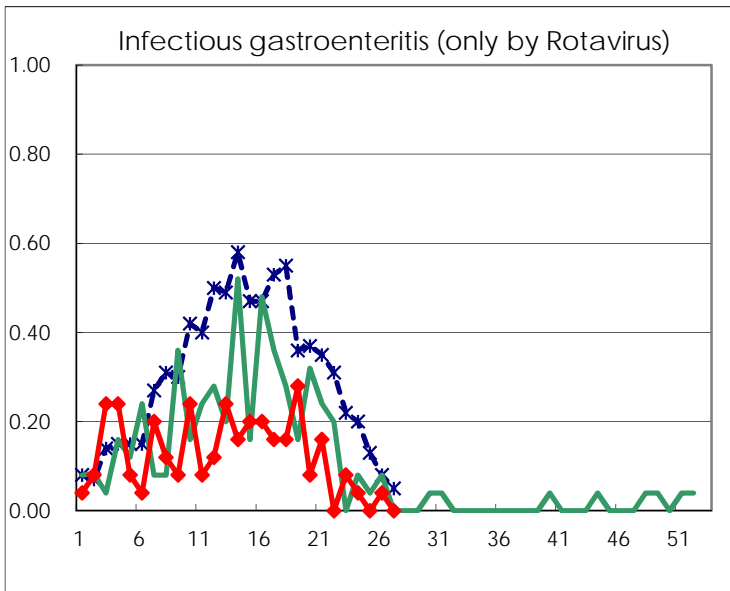
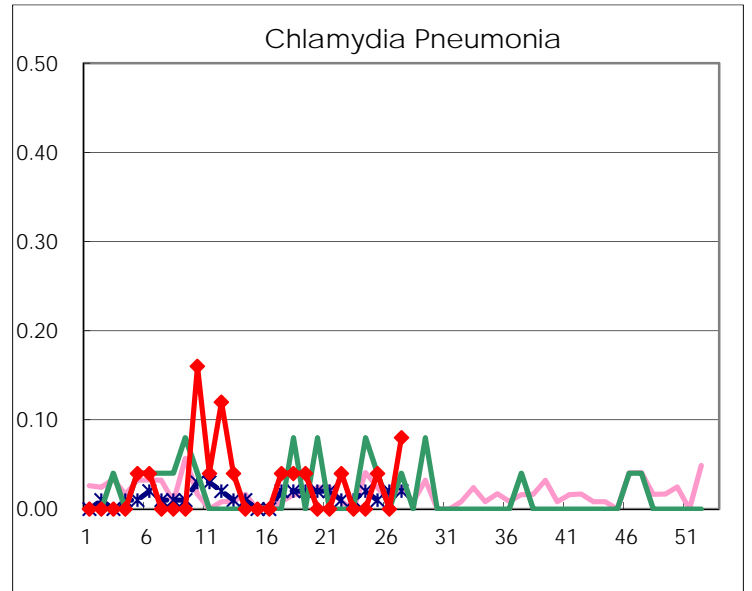
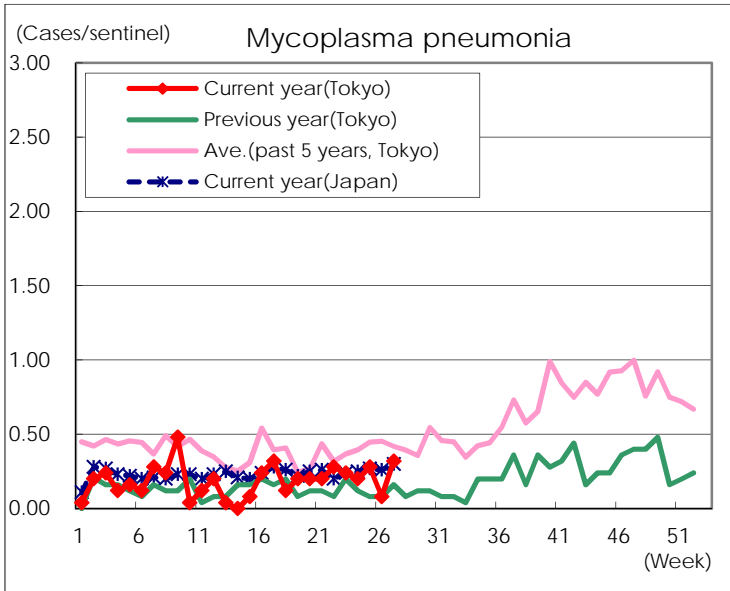
(Blank means 0.)

Disease Trend Graph (weekly reported cases per sentinel in comparison)









Number of sentinel facilities for weekly reporting		
Types of sentinels	Number of sentinels	Sentinels having reported
Pediatric	264	261
Influenza	419	411
Ophthalmic	39	38
Specially-designated	25	25