

23 July 2015 / Number 29

Surveillance System in Tokyo, Japan

The infectious diseases which all physicians must report

All physicians must report to health centers the incidence of the diseases which are shown at page one. Health centers electronically report the individual cases to Tokyo Metropolitan Infectious Disease Surveillance Center.

The infectious diseases required to be reported by the sentinels

The numbers of patients who visit the sentinel clinics or hospitals during a week are reported to health centers in Tokyo. And they electronically report the numbers to Tokyo Metropolitan Infectious Disease Surveillance Center. We have about 500 sentinel clinics and hospitals in Tokyo.

Tokyo Metropolitan Institute of Public Health

TEL:81-3-3363-3213 FAX:81-3-5332-7365

e-mail:www@tokyo-eiken.go.jp

URL:idsc.tokyo-eiken.go.jp/

Number of patients with the diseases which all physicians must report

Category	Diseases	Tokyo				Japan		
		26th	27th	28th	29th	Cum 2015	29th	Cum 2015
I	Ebola hemorrhagic fever							
	Crimean-Congo hemorrhagic fever							
	Smallpox							
	South American hemorrhagic fever							
	Plague							
	Marburg disease							
	Lassa fever							
II	Acute poliomyelitis							
	Tuberculosis	67	79	64	73	2,034	348	13,098
	Diphtheria							
	Severe Acute Respiratory Syndrome(SARS)							
	Middle East Respiratory Syndrome (MERS)							
	Avian influenza H5N1							
	Avian influenza H7N9							
III	Cholera							3
	Shigellosis	1	1	3	2	36	4	82
	Enterohemorrhagic Escherichia coli infection	16	24	27	24	152	123	1,451
	Typhoid fever					7		21
	Paratyphoid fever					5		22
IV	Hepatitis E		1			17	2	109
	West Nile fever							
	Hepatitis A					27	3	153
	Echinococcosis					1		8
	Yellow fever							
	Psittacosis							5
	Omsk hemorrhagic fever							
	Relapsing fever							
	Kyasanur forest disease							
	Q fever							
	Rabies							
	Coccidioidomycosis		1			1		2
	Monkeypox							
	Severe Fever with Thrombocytopenia Syndrome						2	30
	Hemorrhagic fever with renal syndrome							
	Western equine encephalitis							
	Tick-borne encephalitis							
	Anthrax							
	Chikungunya fever			1		6		11
	Scrub typhus(Tsutsugamushi disease)	1				2		70
	Dengue fever	1	2	1	2	37	4	131
	Eastern equine encephalitis							
	Avian influenza (excluding H5N1 and H7N9)							
	Nipah virus infection							
	Japanese spotted fever						8	80
	Japanese encephalitis							
	Hantavirus pulmonary syndrome							
	Herpes B virus infection							
	Glanders							
	Brucellosis			1		2		4
	Venezuelan equine encephalitis							
	Hendra virus infection							
Epidemic typhus								
Botulism								
Malaria		1			8		21	
Tularemia							1	
Lyme disease			1		1		3	
Lyssavirus infection(excluding rabies)								
Rift valley fever								
Melioidosis								
Legionellosis	2	4	6	6	62	54	750	
Leptospirosis					5		6	
Rocky mountain spotted fever								

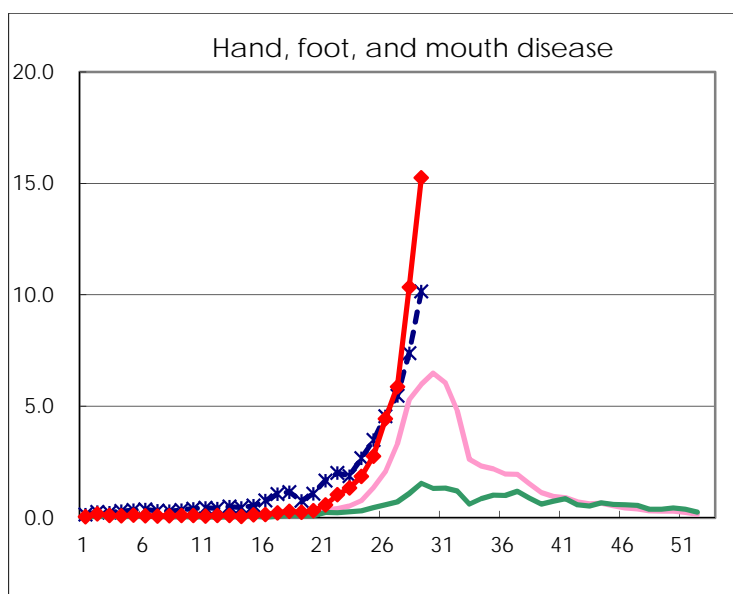
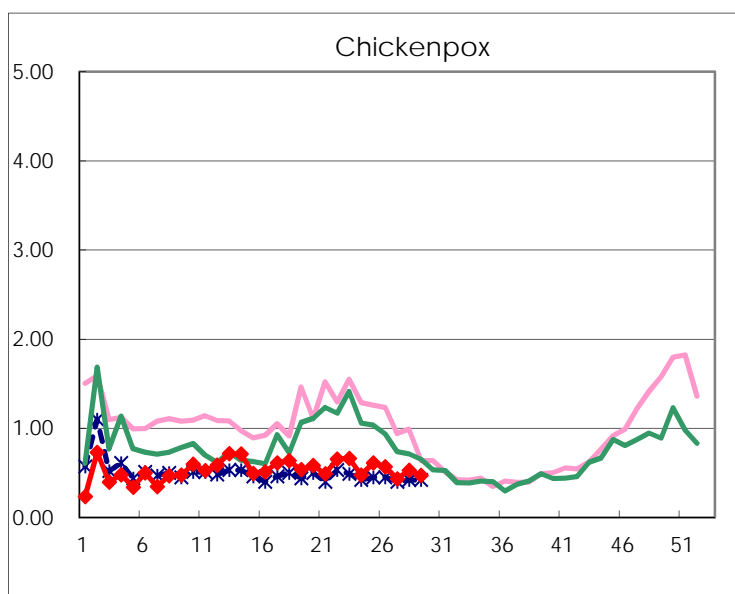
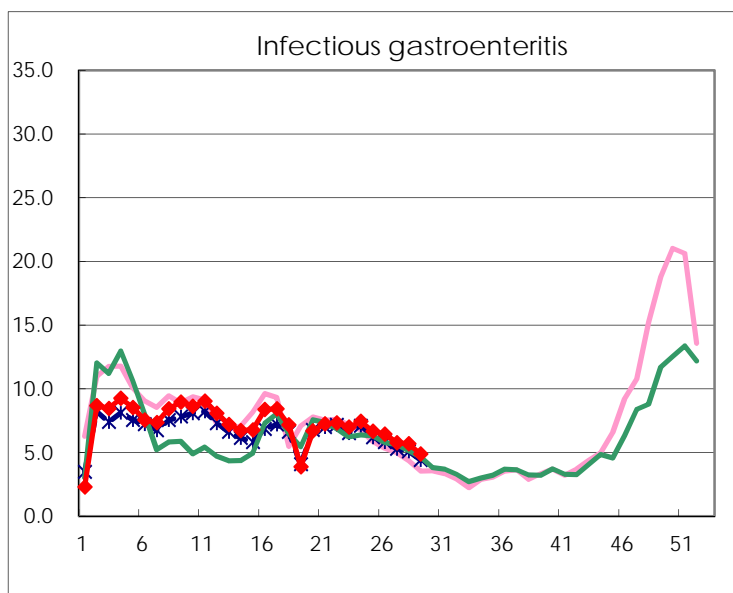
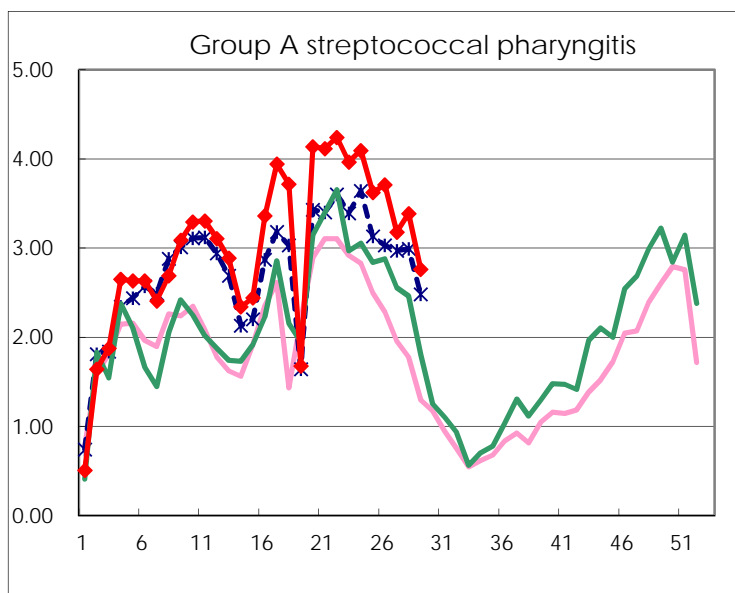
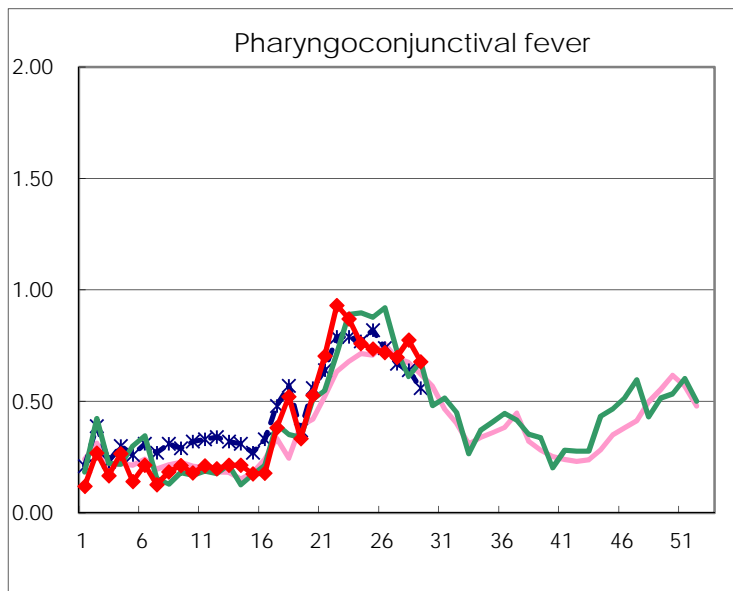
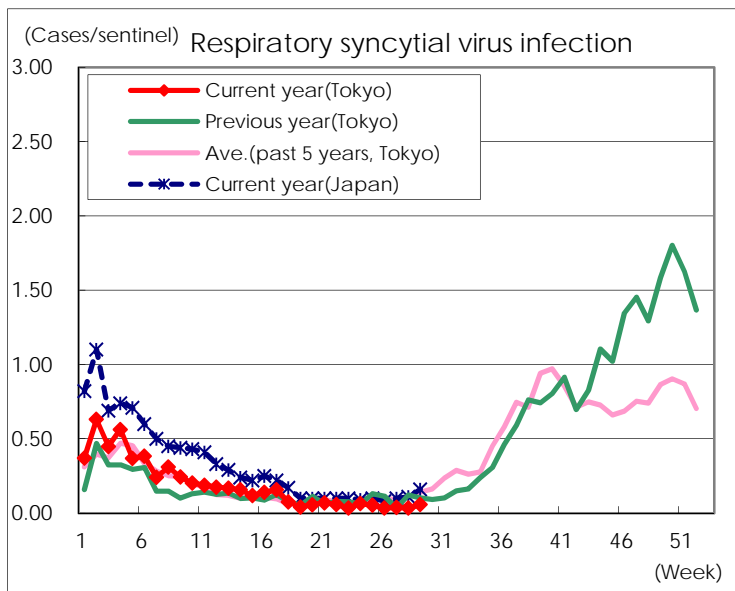
Category	Diseases	Tokyo					Japan	
		26th	27th	28th	29th	Cum 2015	29th	Cum 2015
V	Amebiasis	6	7	5	6	115	11	602
	Viral hepatitis(excluding hepatitis A and E)	1	1			30	2	137
	CRE infection	4	6	5	9	96	23	725
	Acute encephalitis(excluding JE and WNE)	1		1		28	3	289
	Cryptosporidiosis					3		9
	Creutzfeldt-Jakob disease	1	2	1	2	16	4	98
	Severe invasive streptococcal infections(TSLS)	2	1	1		38	2	257
	Acquired immunodeficiency syndrome (AIDS)	12	10	7	6	232	11	765
	Giardiasis		2	1	1	13	1	40
	Invasive <i>Haemophilus influenzae</i> disease		2			15	4	138
	Invasive meningococcal disease					6		18
	Invasive pneumococcal disease	5	5	2	4	201	15	1,440
	Varicella (limited to hospitalized case)	2	2	1		28	7	174
	Congenital rubella syndrome							
	Syphilis	29	20	19	17	515	33	1,252
	Disseminated cryptococcosis				1	7		67
	Tetanus					1		53
	Vancomycin-resistant <i>S. aureus</i> infection							
	Vancomycin-resistant Enterococcus infection					1	1	30
	Rubella	2	1	1		21	1	108
Measles					9	1	25	
MDRA infection		1			5		18	

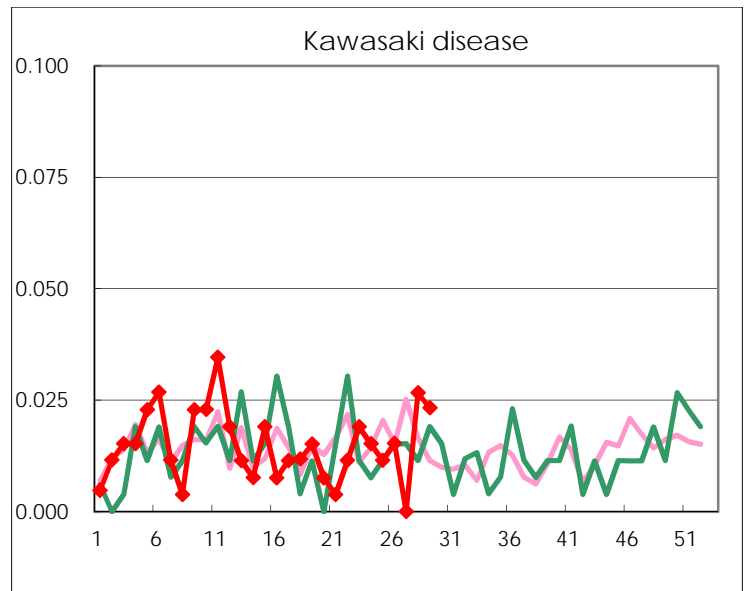
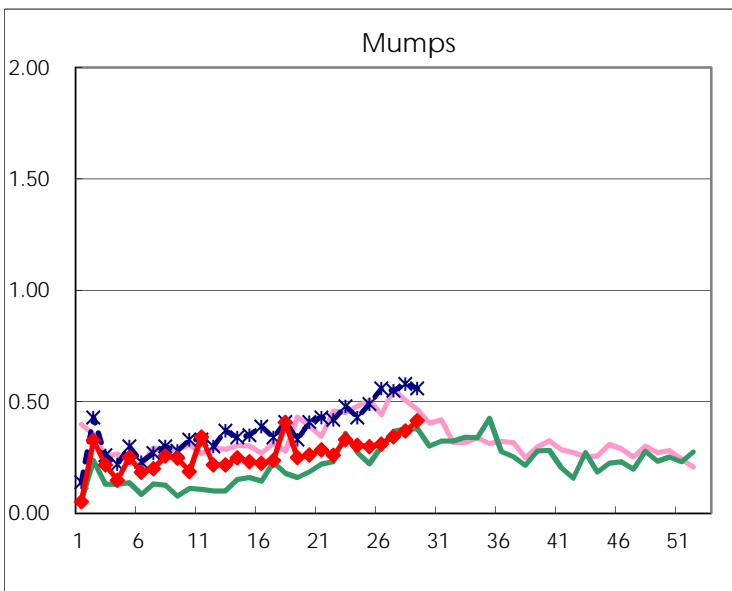
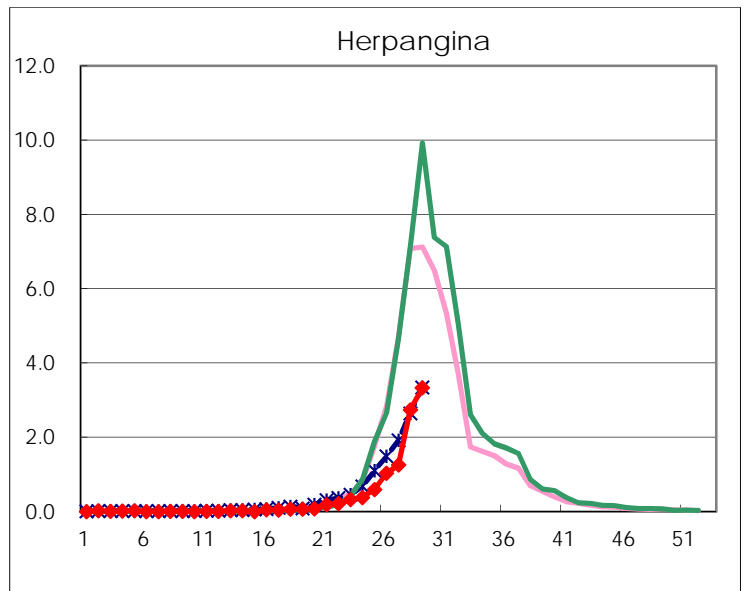
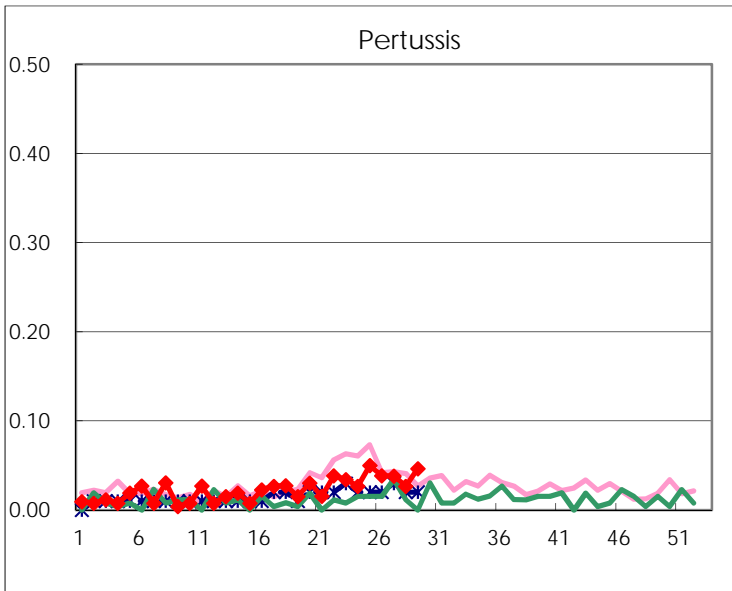
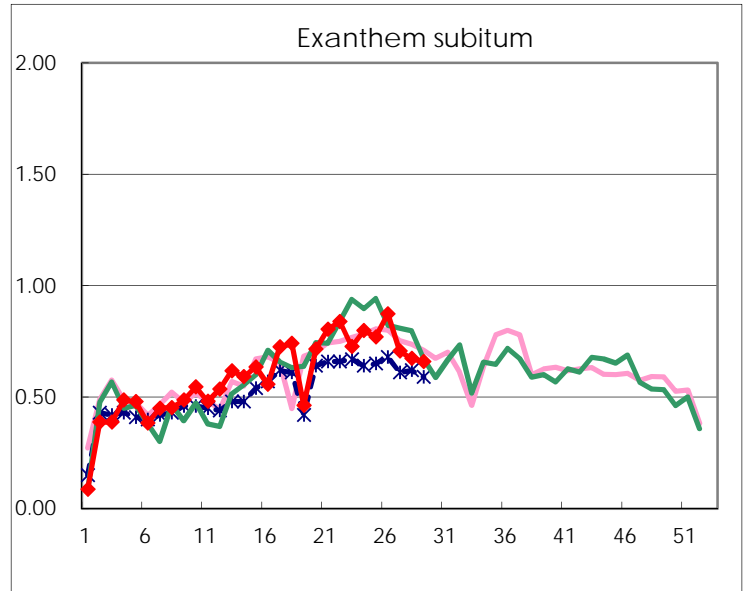
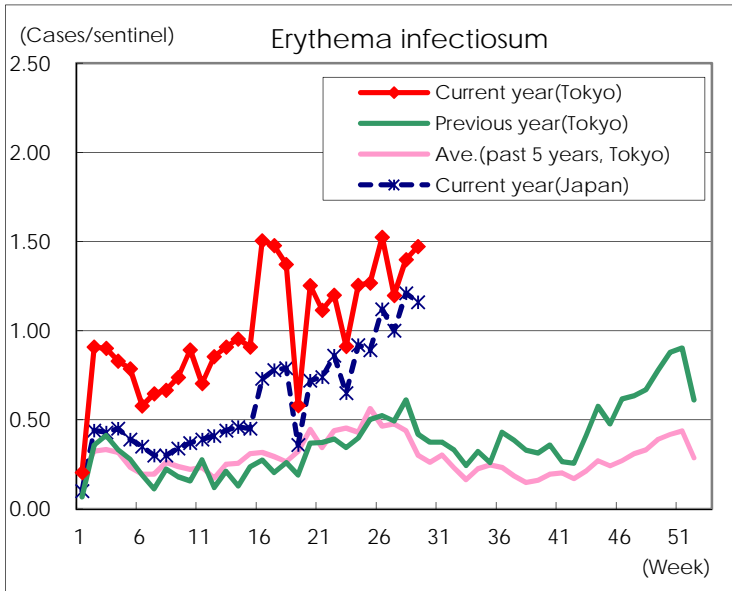
Number of patients with the diseases to be reported
by the designated clinics and hospitals

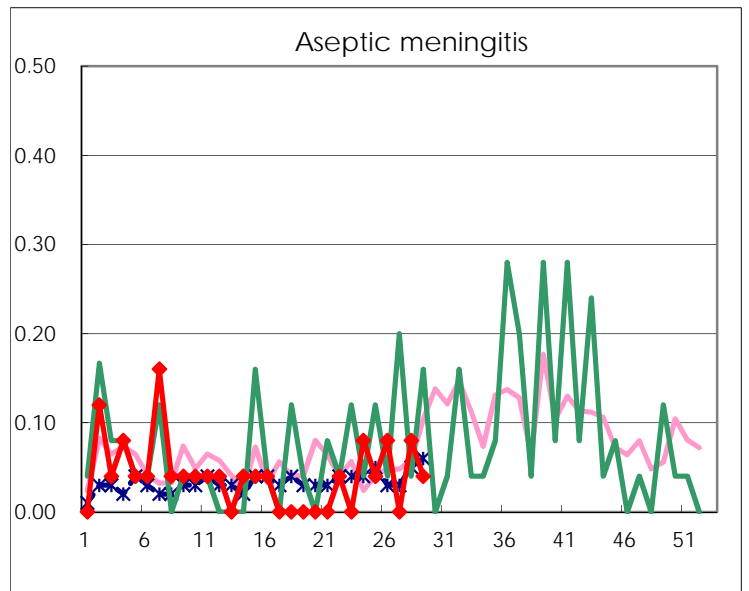
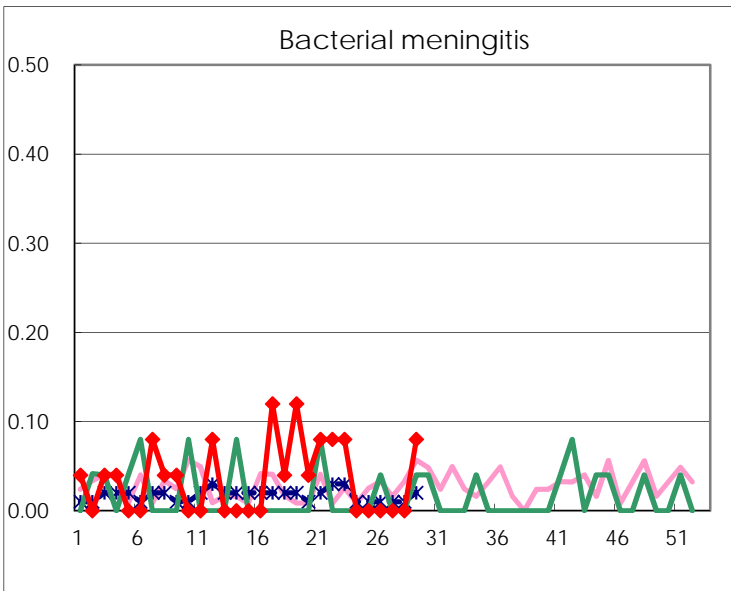
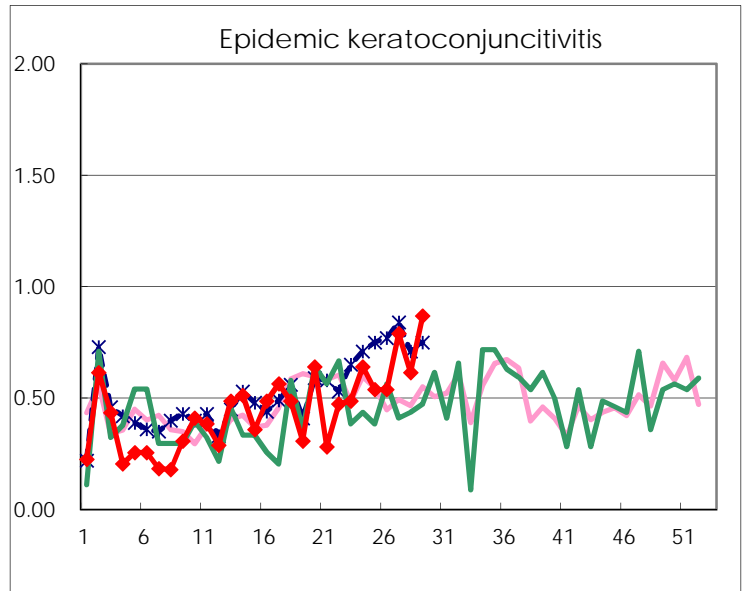
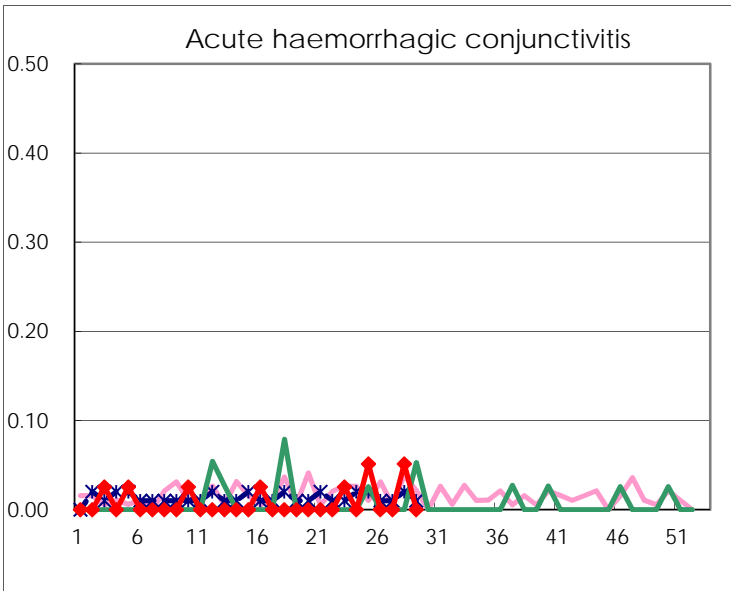
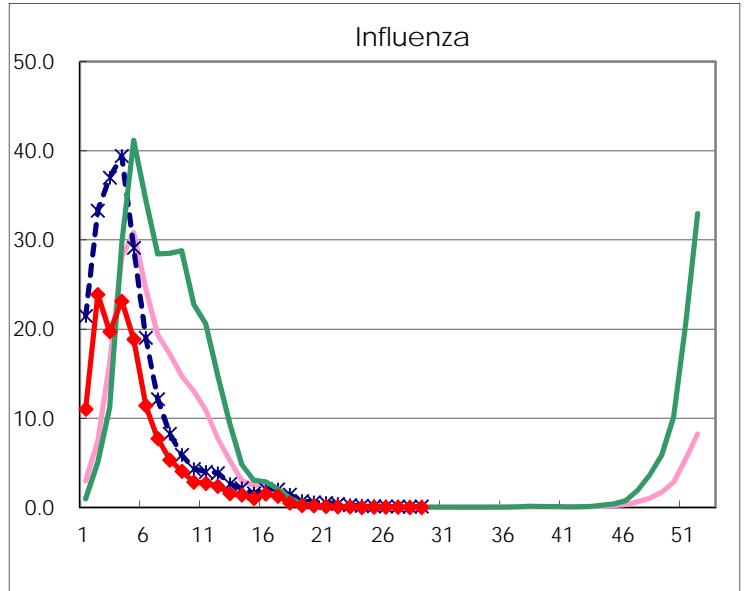
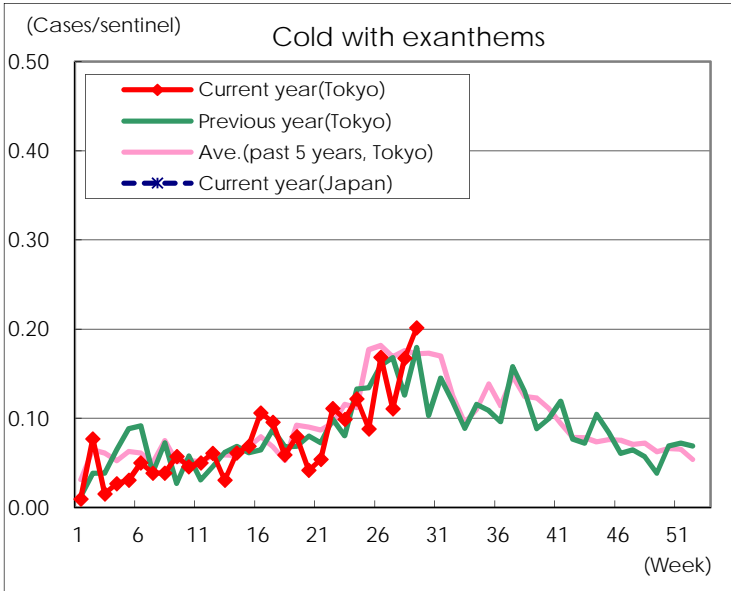
Diseases	Tokyo				
	26th	27th	28th	29th	/sentinel
Respiratory syncytial virus infection	9	10	9	15	0.06
Pharyngoconjunctival fever	188	183	204	175	0.68
Group A streptococcal pharyngitis	968	833	891	712	2.76
Infectious gastroenteritis	1,679	1,511	1,493	1,257	4.87
Chickenpox	148	113	139	121	0.47
Hand, foot, and mouth disease	1,158	1,541	2,720	3,936	15.26
Erythema infectiosum	398	314	368	380	1.47
Exanthem subitum	228	185	177	170	0.66
Pertussis	10	10	7	12	0.05
Herpangina	269	329	721	860	3.33
Mumps	81	90	97	107	0.41
Kawasaki disease	4		7	6	0.02
Cold with exanthems	44	29	44	52	0.20
Influenza	13	10	8	5	0.01
Acute hemorrhagic conjunctivitis			2		
Epidemic keratoconjunctivitis	21	30	24	33	0.87
Bacterial meningitis				2	0.08
Aseptic meningitis	2		2	1	0.04
Mycoplasma pneumonia	2	8	8	10	0.40
Chlamydial pneumonia (excluding psittacosis)		2	1	1	0.04
Infectious gastroenteritis (only by Rotavirus)	1		1		
Influenza-Associated Hospitalizations			1		

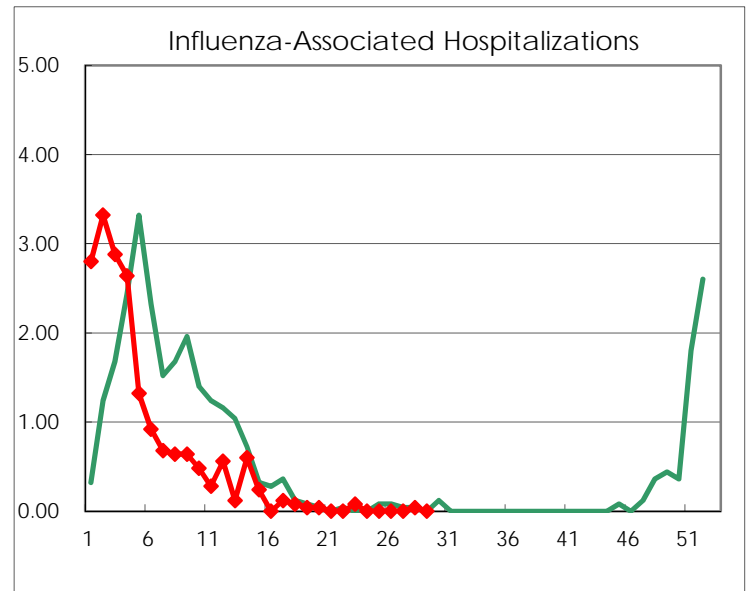
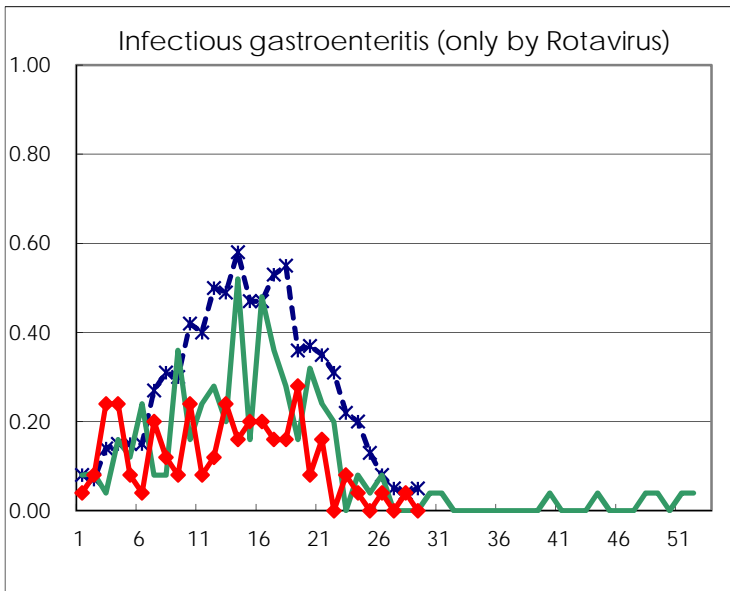
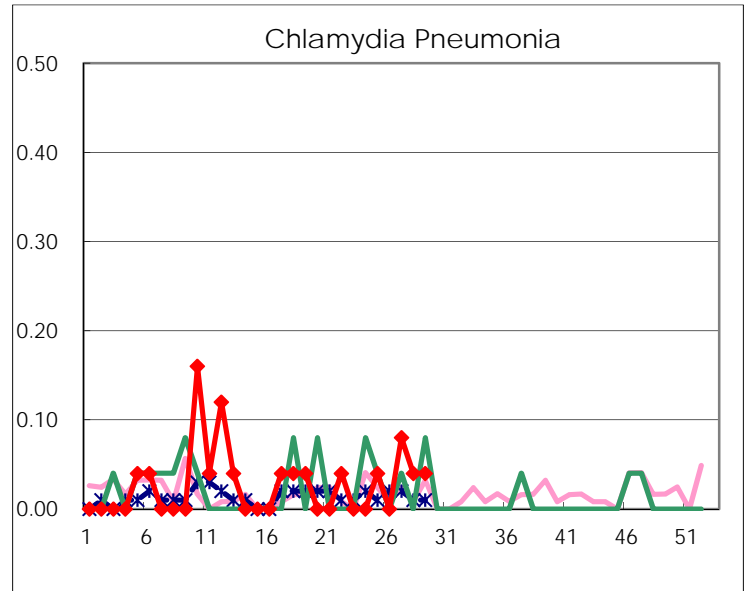
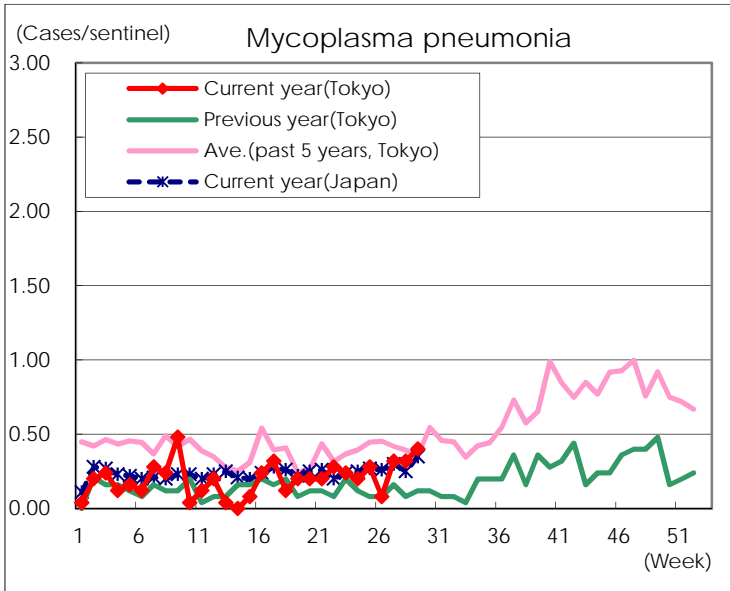
(Blank means 0.)

Disease Trend Graph (weekly reported cases per sentinel in comparison)









Number of sentinel facilities for weekly reporting		
Types of sentinels	Number of sentinels	Sentinels having reported
Pediatric	264	258
Influenza	419	408
Ophthalmic	39	38
Specially-designated	25	25