

6 August 2015 / Number 31

Surveillance System in Tokyo, Japan

The infectious diseases which all physicians must report

All physicians must report to health centers the incidence of the diseases which are shown at page one. Health centers electronically report the individual cases to Tokyo Metropolitan Infectious Disease Surveillance Center.

The infectious diseases required to be reported by the sentinels

The numbers of patients who visit the sentinel clinics or hospitals during a week are reported to health centers in Tokyo. And they electronically report the numbers to Tokyo Metropolitan Infectious Disease Surveillance Center. We have about 500 sentinel clinics and hospitals in Tokyo.

Tokyo Metropolitan Institute of Public Health

TEL:81-3-3363-3213 FAX:81-3-5332-7365

e-mail:www@tokyo-eiken.go.jp

URL:idsc.tokyo-eiken.go.jp/

Number of patients with the diseases which all physicians must report

Category	Diseases	Tokyo					Japan	
		28th	29th	30th	31st	Cum 2015	31st	Cum 2015
I	Ebola hemorrhagic fever							
	Crimean-Congo hemorrhagic fever							
	Smallpox							
	South American hemorrhagic fever							
	Plague							
	Marburg disease							
	Lassa fever							
II	Acute poliomyelitis							
	Tuberculosis	65	81	55	83	2,182	418	14,082
	Diphtheria							
	Severe Acute Respiratory Syndrome(SARS)							
	Middle East Respiratory Syndrome (MERS)							
	Avian influenza H5N1							
	Avian influenza H7N9							
III	Cholera							3
	Shigellosis	3	2		2	38	4	89
	Enterohemorrhagic Escherichia coli infection	27	27	13	19	187	118	1,720
	Typhoid fever				1	8	1	22
	Paratyphoid fever					5		23
IV	Hepatitis E			1	1	19	2	117
	West Nile fever							
	Hepatitis A			2		29	2	164
	Echinococcosis					1		8
	Yellow fever							
	Psittacosis							5
	Omsk hemorrhagic fever							
	Relapsing fever							2
	Kyasanur forest disease							
	Q fever							
	Rabies							
	Coccidioidomycosis					1		2
	Monkeypox							
	Severe Fever with Thrombocytopenia Syndrome						2	33
	Hemorrhagic fever with renal syndrome							
	Western equine encephalitis							
	Tick-borne encephalitis							
	Anthrax							
	Chikungunya fever	1				6		11
	Scrub typhus(Tsutsugamushi disease)					2		71
	Dengue fever	1	3			38	2	137
	Eastern equine encephalitis							
	Avian influenza (excluding H5N1 and H7N9)							
	Nipah virus infection							
	Japanese spotted fever							88
	Japanese encephalitis							
	Hantavirus pulmonary syndrome							
	Herpes B virus infection							
	Glanders							
	Brucellosis	1				2		4
	Venezuelan equine encephalitis							
	Hendra virus infection							
Epidemic typhus								
Botulism								
Malaria				2	10	2	23	
Tularemia							1	
Lyme disease	1				1	1	4	
Lyssavirus infection(excluding rabies)								
Rift valley fever								
Melioidosis								
Legionellosis	6	6	5	3	70	38	858	
Leptospirosis					5		7	
	Rocky mountain spotted fever							

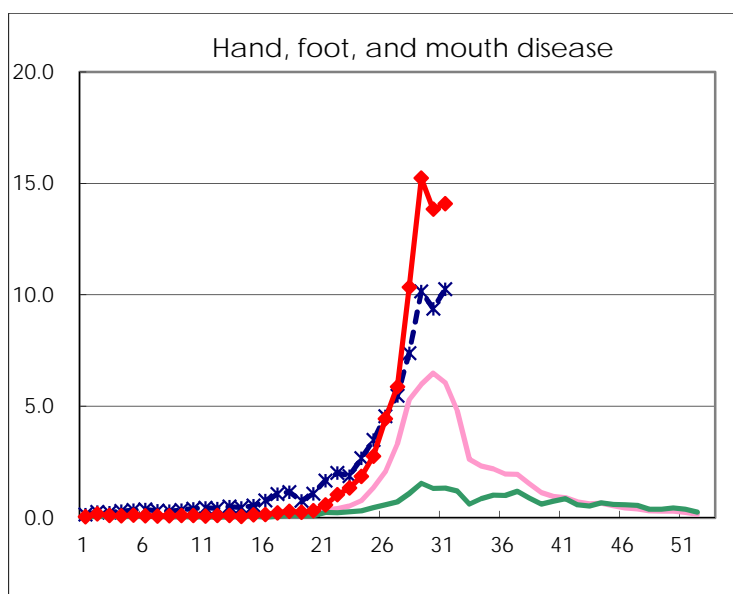
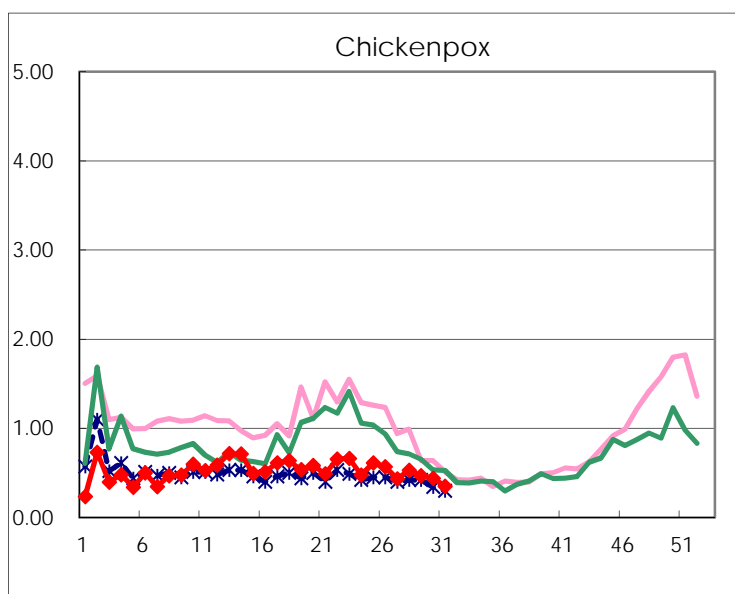
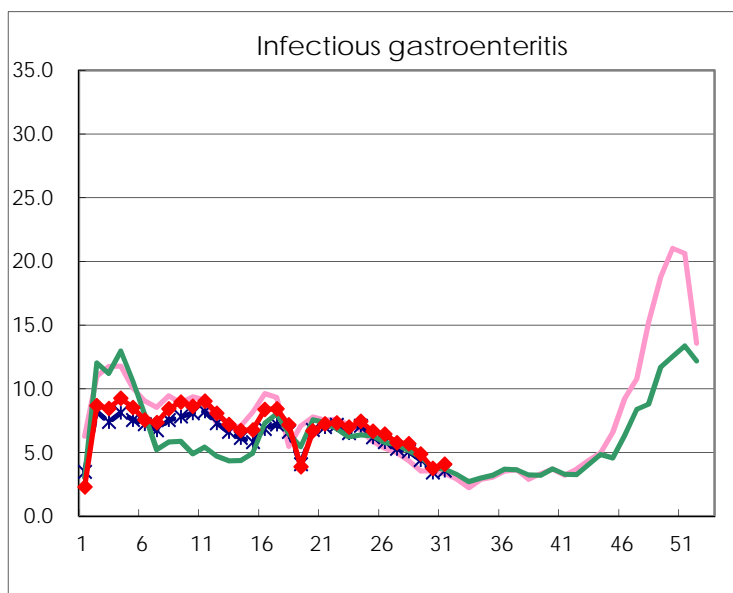
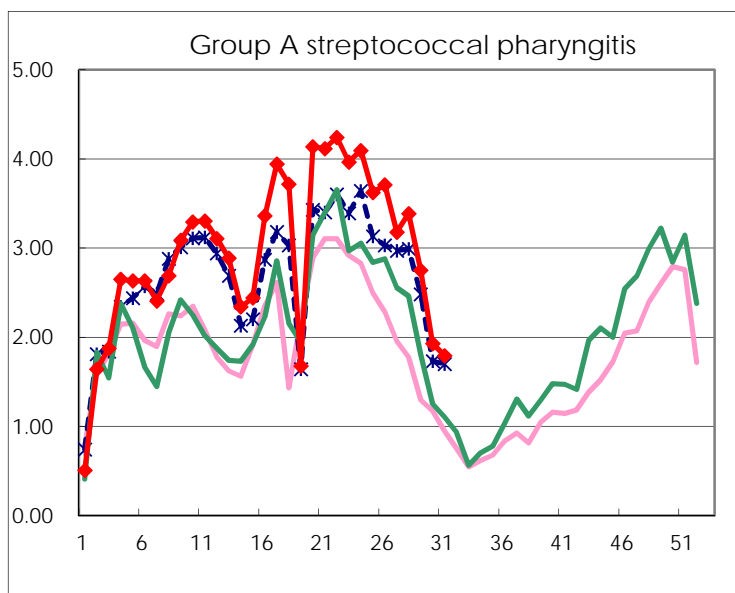
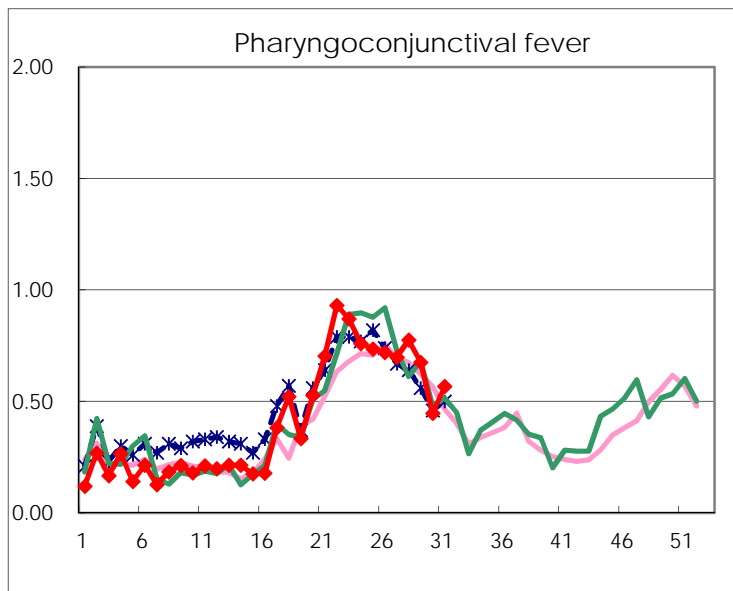
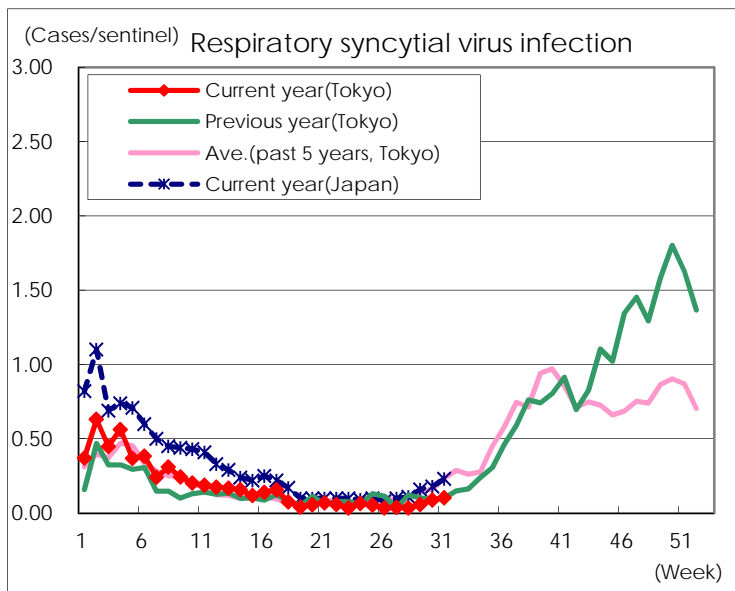
Category	Diseases	Tokyo					Japan	
		28th	29th	30th	31st	Cum 2015	31st	Cum 2015
V	Amebiasis	5	6	3		118	12	641
	Viral hepatitis(excluding hepatitis A and E)			1		31	3	146
	CRE infection	5	11	7	5	110	24	811
	Acute encephalitis(excluding JE and WNE)	1		2		30	5	311
	Cryptosporidiosis					3		9
	Creutzfeldt-Jakob disease	1	2			16	3	103
	Severe invasive streptococcal infections(TSLS)	1		1	4	43	7	272
	Acquired immunodeficiency syndrome (AIDS)	7	6	6	7	245	19	820
	Giardiasis	1	1			13		40
	Invasive <i>Haemophilus influenzae</i> disease					15	1	149
	Invasive meningococcal disease			1		7	1	20
	Invasive pneumococcal disease	2	4	4	4	209	22	1,498
	Varicella (limited to hospitalized case)	1		1	1	30	2	190
	Congenital rubella syndrome							
	Syphilis	19	19	14	20	551	38	1,350
	Disseminated cryptococcosis		1	1		8		69
	Tetanus					1	4	59
	Vancomycin-resistant <i>S. aureus</i> infection							
	Vancomycin-resistant Enterococcus infection					1	2	36
	Rubella	1			3	24	2	113
Measles					9		26	
MDRA infection					5		19	

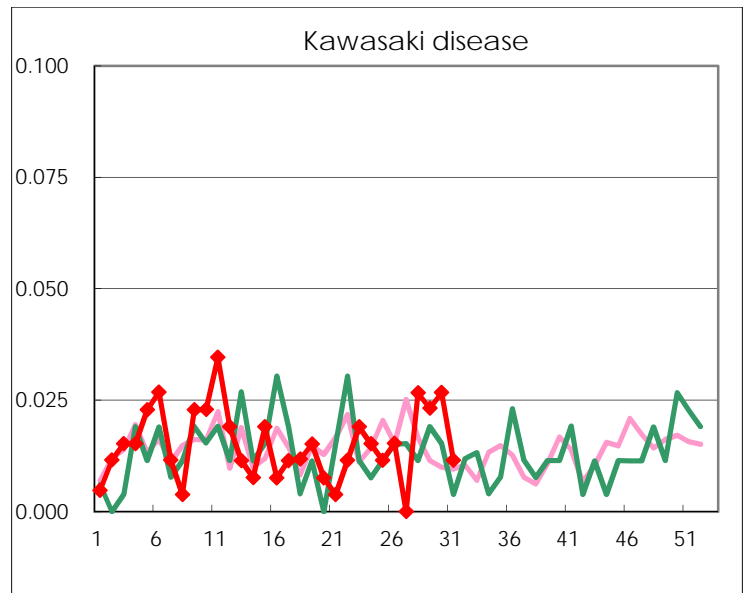
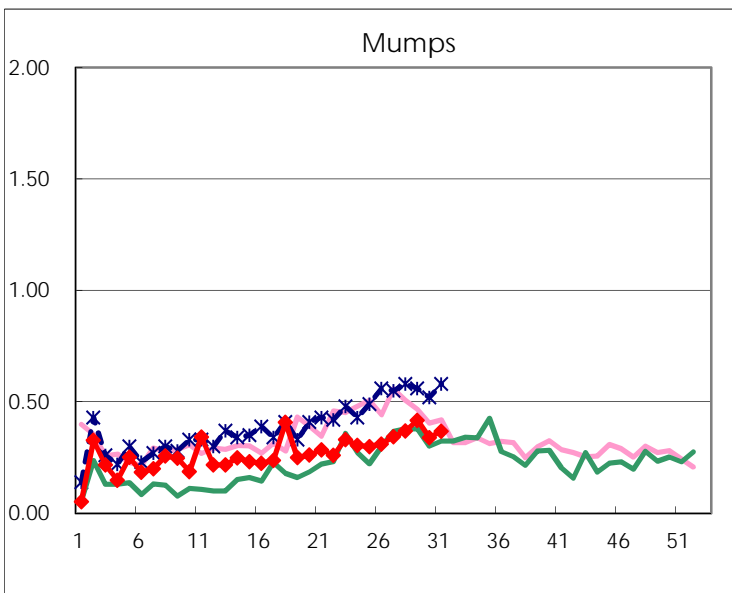
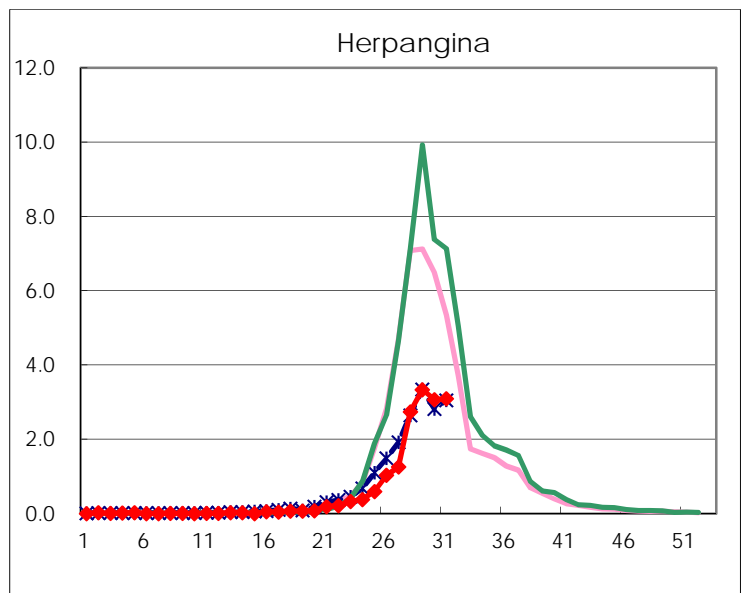
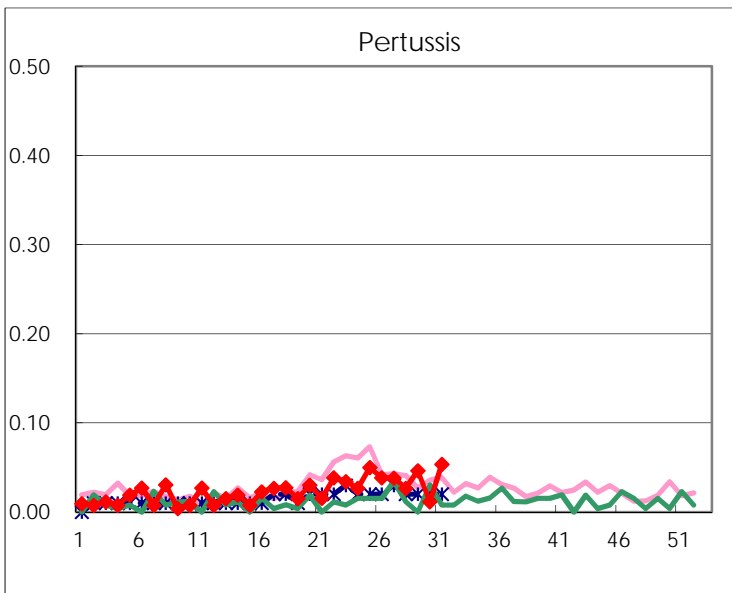
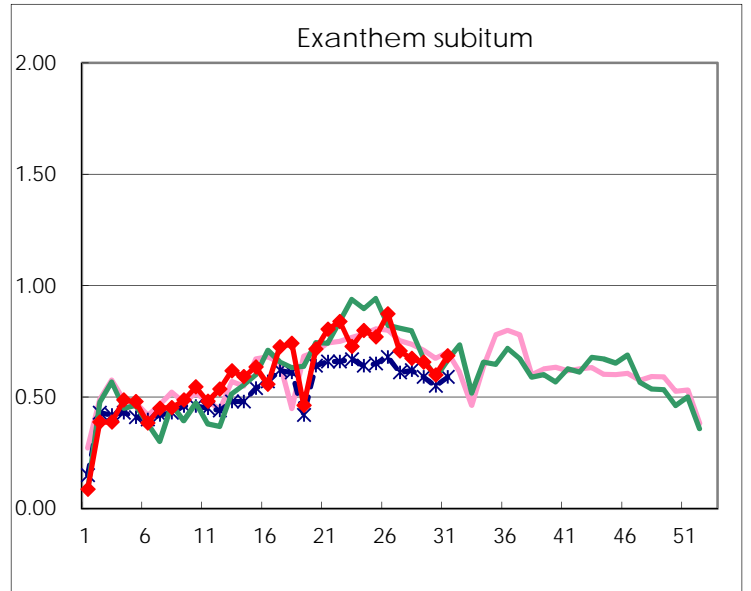
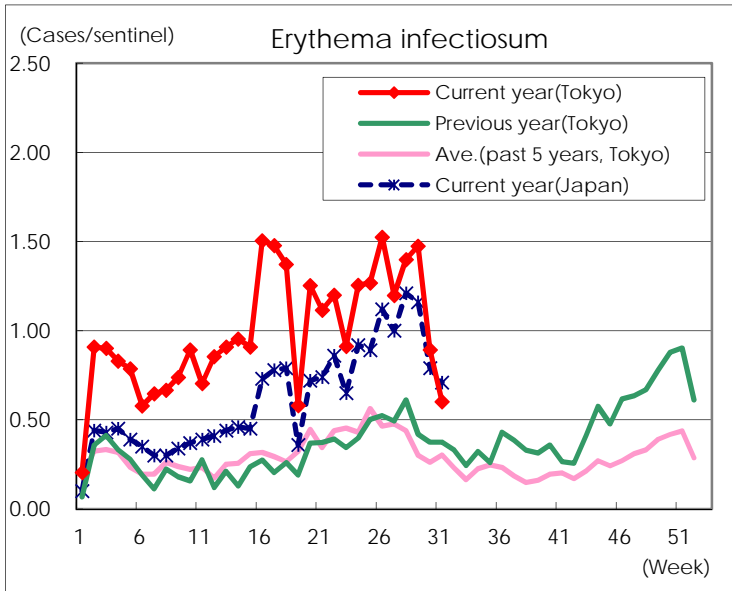
Number of patients with the diseases to be reported
by the designated clinics and hospitals

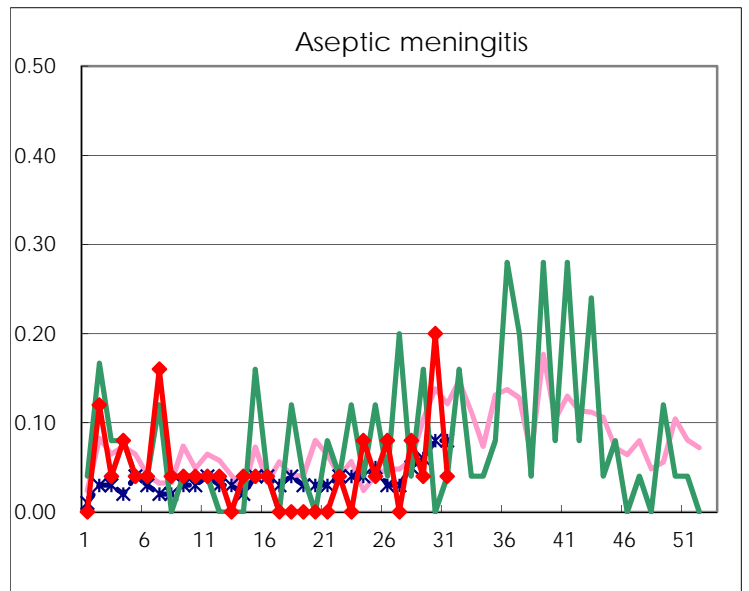
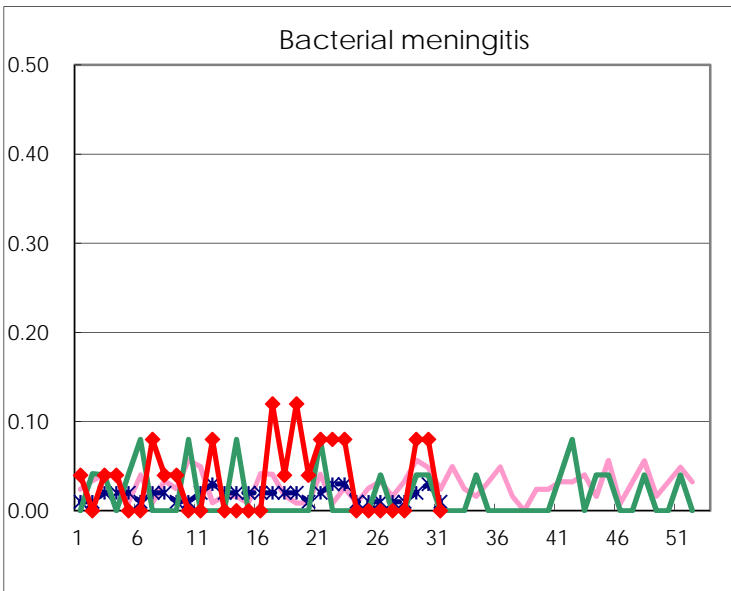
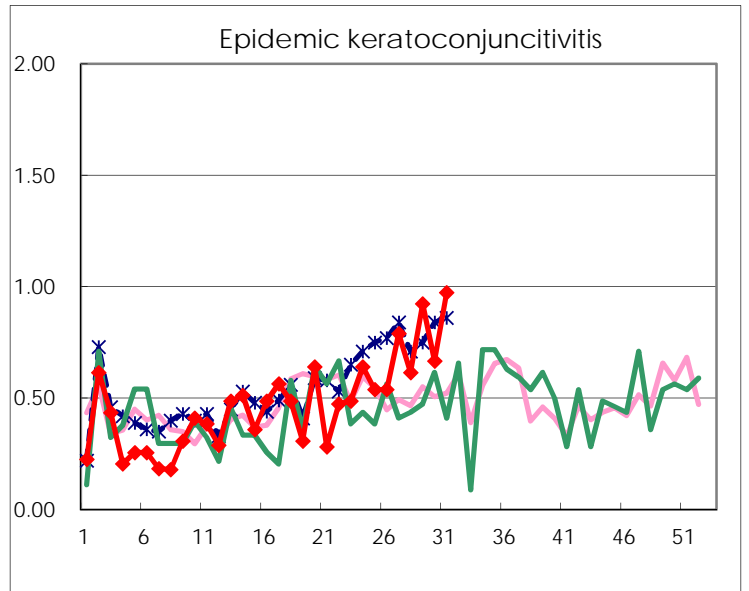
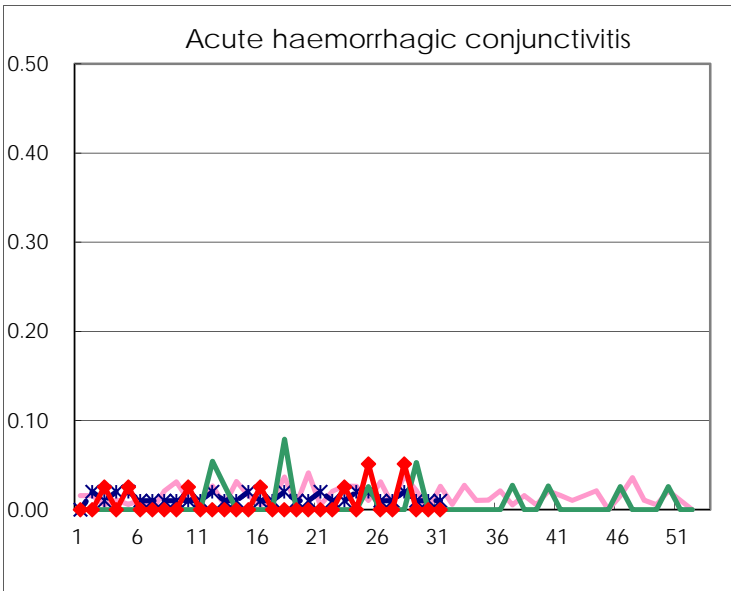
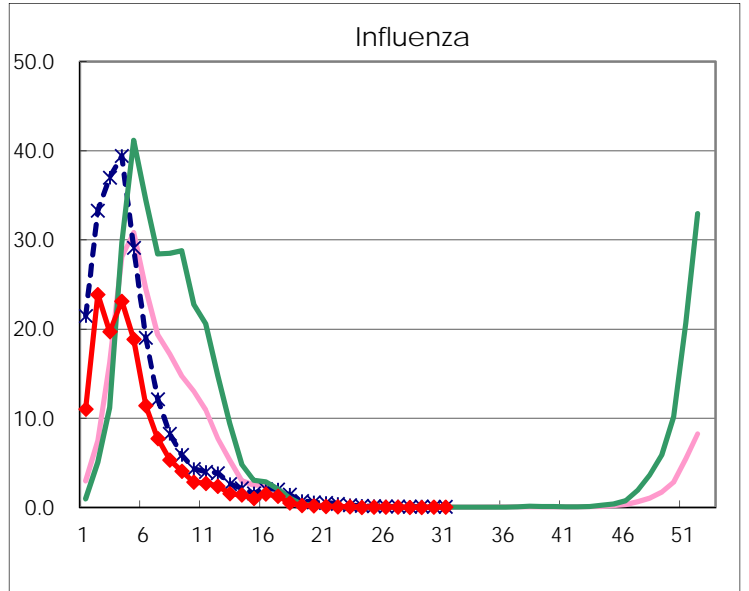
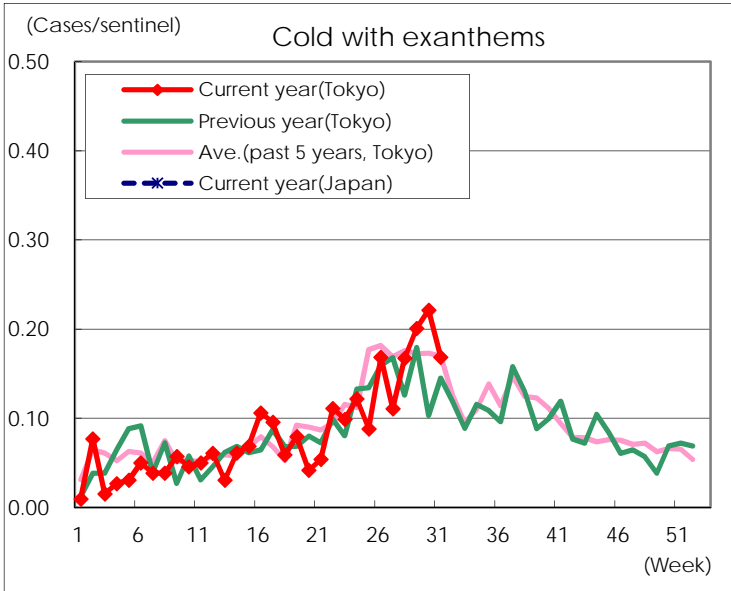
Diseases	Tokyo				
	28th	29th	30th	31st	/sentinel
Respiratory syncytial virus infection	9	15	23	27	0.10
Pharyngoconjunctival fever	204	175	117	148	0.57
Group A streptococcal pharyngitis	891	712	505	468	1.79
Infectious gastroenteritis	1,493	1,263	982	1,065	4.08
Chickenpox	139	121	115	91	0.35
Hand, foot, and mouth disease	2,720	3,948	3,626	3,678	14.09
Erythema infectiosum	368	382	234	157	0.60
Exanthem subitum	177	170	157	179	0.69
Pertussis	7	12	3	14	0.05
Herpangina	721	865	805	807	3.09
Mumps	97	108	89	96	0.37
Kawasaki disease	7	6	7	3	0.01
Cold with exanthems	44	52	58	44	0.17
Influenza	8	7	10	11	0.03
Acute hemorrhagic conjunctivitis	2				
Epidemic keratoconjunctivitis	24	36	26	38	0.97
Bacterial meningitis		2	2		
Aseptic meningitis	2	1	5	1	0.04
Mycoplasma pneumonia	8	10	8	12	0.48
Chlamydial pneumonia (excluding psittacosis)	1	1		2	0.08
Infectious gastroenteritis (only by Rotavirus)	1				
Influenza-Associated Hospitalizations	1		1		

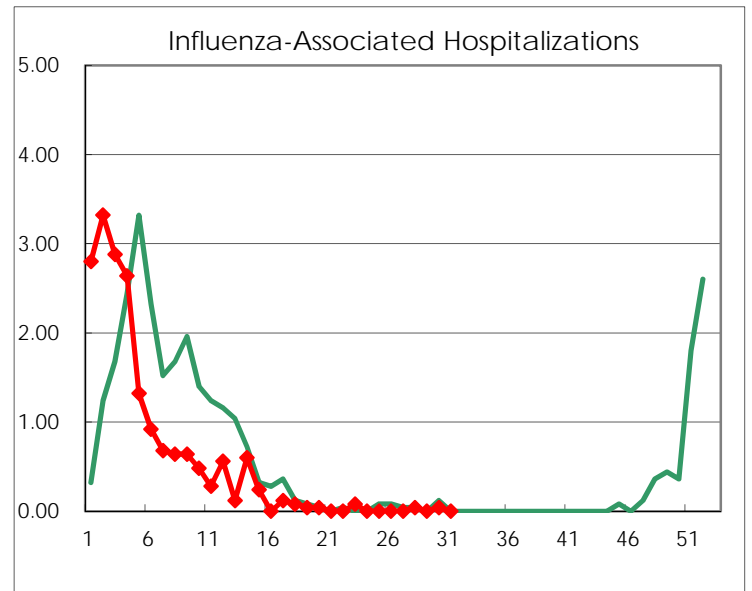
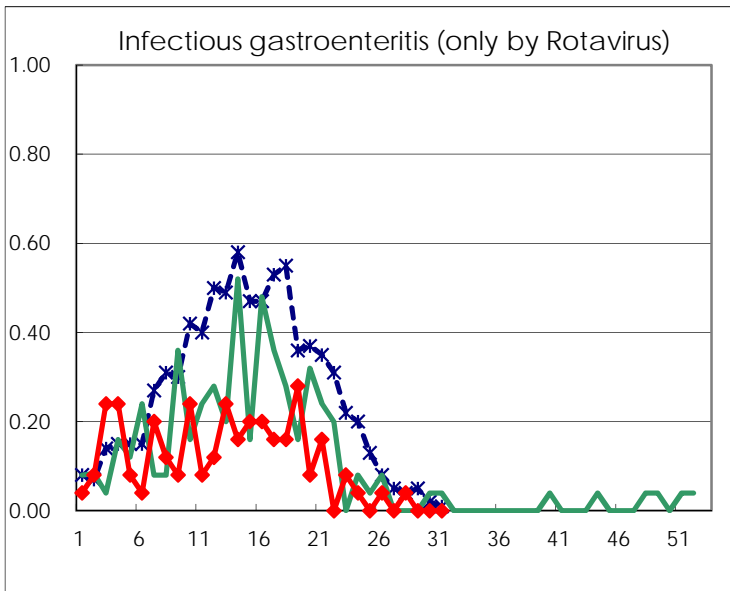
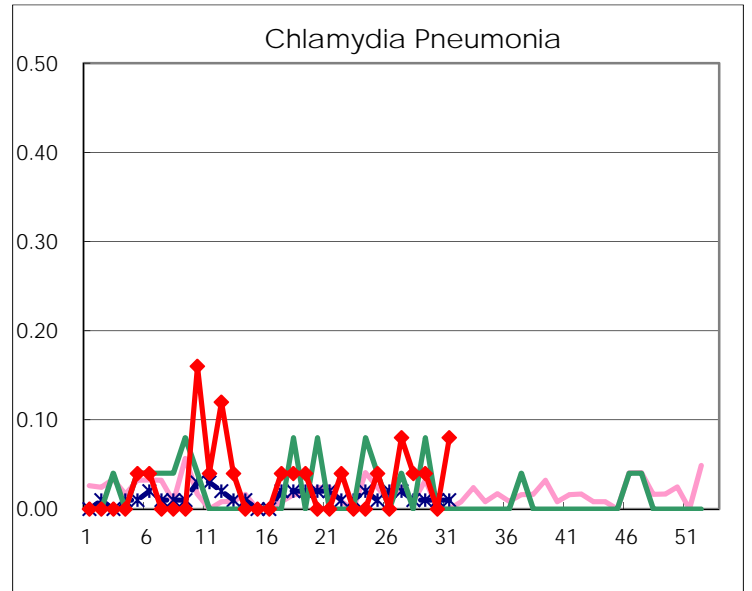
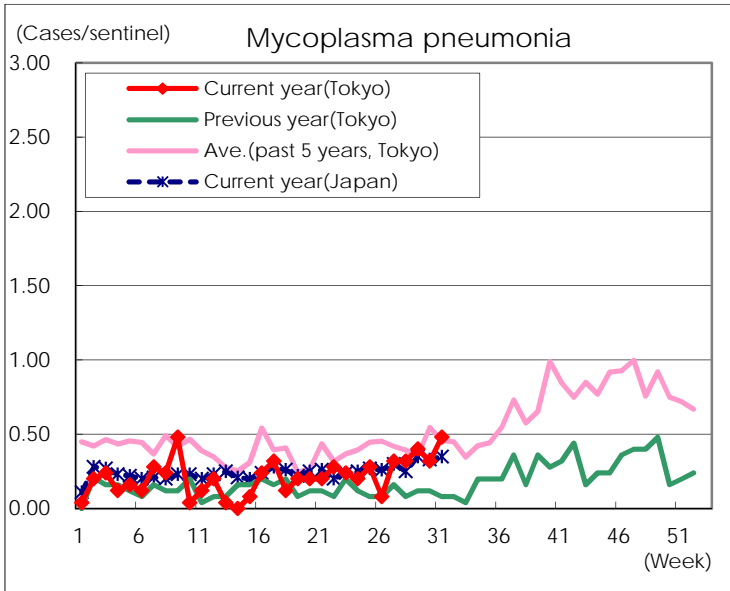
(Blank means 0.)

Disease Trend Graph (weekly reported cases per sentinel in comparison)









Number of sentinel facilities for weekly reporting		
Types of sentinels	Number of sentinels	Sentinels having reported
Pediatric	264	261
Influenza	419	410
Ophthalmic	39	39
Specially-designated	25	25