

13 August 2015 / Number 32

Surveillance System in Tokyo, Japan

The infectious diseases which all physicians must report

All physicians must report to health centers the incidence of the diseases which are shown at page one. Health centers electronically report the individual cases to Tokyo Metropolitan Infectious Disease Surveillance Center.

The infectious diseases required to be reported by the sentinels

The numbers of patients who visit the sentinel clinics or hospitals during a week are reported to health centers in Tokyo. And they electronically report the numbers to Tokyo Metropolitan Infectious Disease Surveillance Center. We have about 500 sentinel clinics and hospitals in Tokyo.

Tokyo Metropolitan Institute of Public Health

TEL:81-3-3363-3213 FAX:81-3-5332-7365

e-mail:www@tokyo-eiken.go.jp

URL:idsc.tokyo-eiken.go.jp/

Number of patients with the diseases which all physicians must report

Category	Diseases	Tokyo					Japan	
		29th	30th	31st	32nd	Cum 2015	32nd	Cum 2015
I	Ebola hemorrhagic fever							
	Crimean-Congo hemorrhagic fever							
	Smallpox							
	South American hemorrhagic fever							
	Plague							
	Marburg disease							
	Lassa fever							
II	Acute poliomyelitis							
	Tuberculosis	82	59	87	49	2,242	359	14,564
	Diphtheria							
	Severe Acute Respiratory Syndrome(SARS)							
	Middle East Respiratory Syndrome (MERS)							
	Avian influenza H5N1							
	Avian influenza H7N9							
III	Cholera							3
	Shigellosis	2		2	2	40	4	93
	Enterohemorrhagic Escherichia coli infection	27	13	19	14	201	123	1,868
	Typhoid fever			1		8		22
	Paratyphoid fever					5		23
IV	Hepatitis E		1	1		19	1	120
	West Nile fever							
	Hepatitis A		2			29	3	167
	Echinococcosis					1		8
	Yellow fever							
	Psittacosis							5
	Omsk hemorrhagic fever							
	Relapsing fever							2
	Kyasanur forest disease							
	Q fever							
	Rabies							
	Coccidioidomycosis					1		2
	Monkeypox							
	Severe Fever with Thrombocytopenia Syndrome						4	37
	Hemorrhagic fever with renal syndrome							
	Western equine encephalitis							
	Tick-borne encephalitis							
	Anthrax							
	Chikungunya fever					6		11
	Scrub typhus(Tsutsugamushi disease)					2		72
	Dengue fever	3				38	5	144
	Eastern equine encephalitis							
	Avian influenza (excluding H5N1 and H7N9)							
	Nipah virus infection							
	Japanese spotted fever						2	90
	Japanese encephalitis							
	Hantavirus pulmonary syndrome							
	Herpes B virus infection							
	Glanders							
	Brucellosis					2		4
	Venezuelan equine encephalitis							
	Hendra virus infection							
Epidemic typhus								
Botulism								
Malaria			2	1	11		24	
Tularemia							1	
Lyme disease					1	1	6	
Lyssavirus infection(excluding rabies)								
Rift valley fever								
Melioidosis								
Legionellosis	6	5	3	1	71	30	896	
Leptospirosis					5		7	
	Rocky mountain spotted fever							

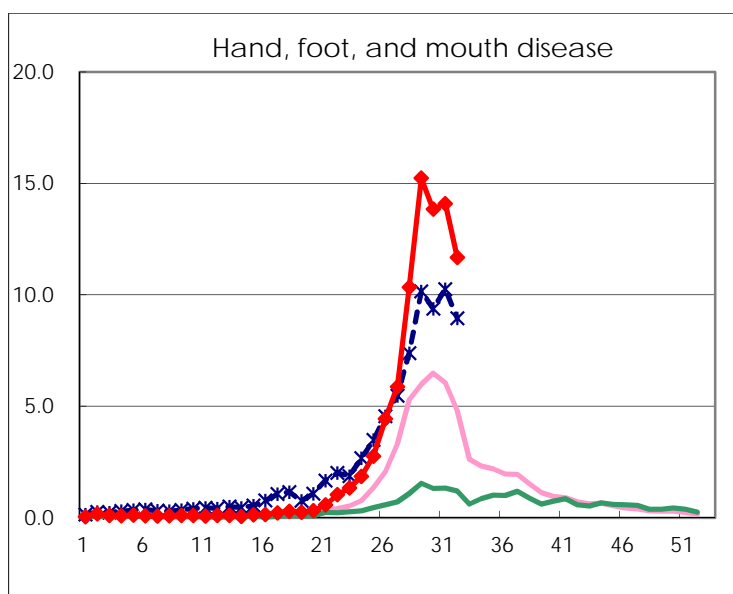
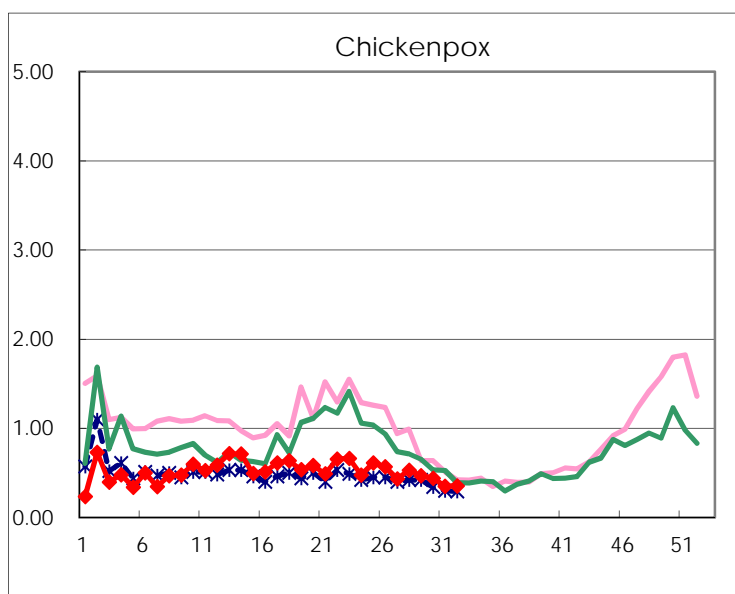
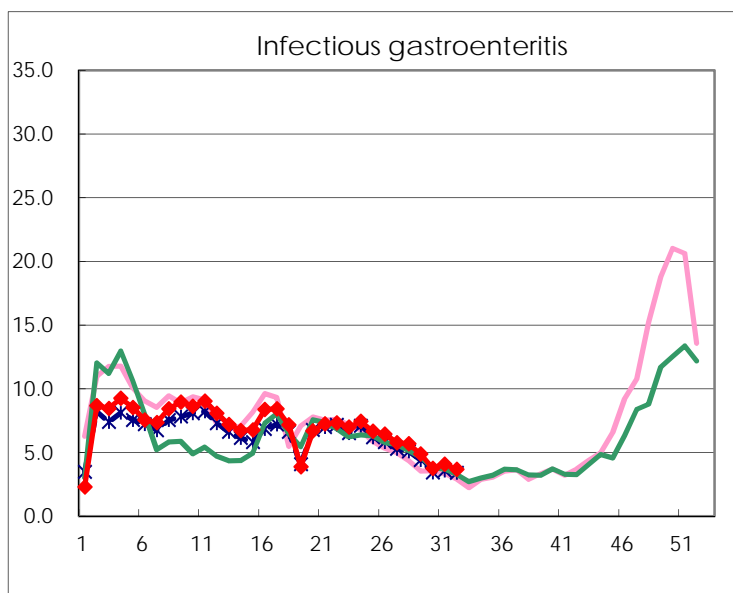
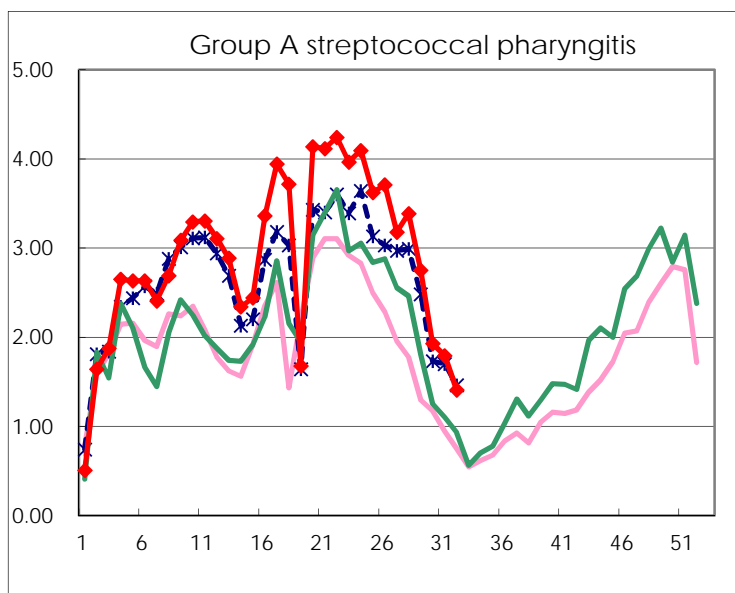
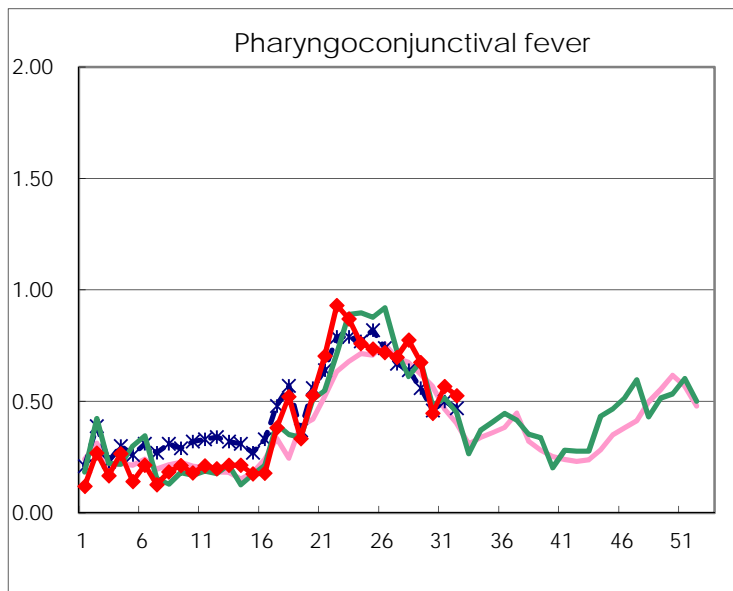
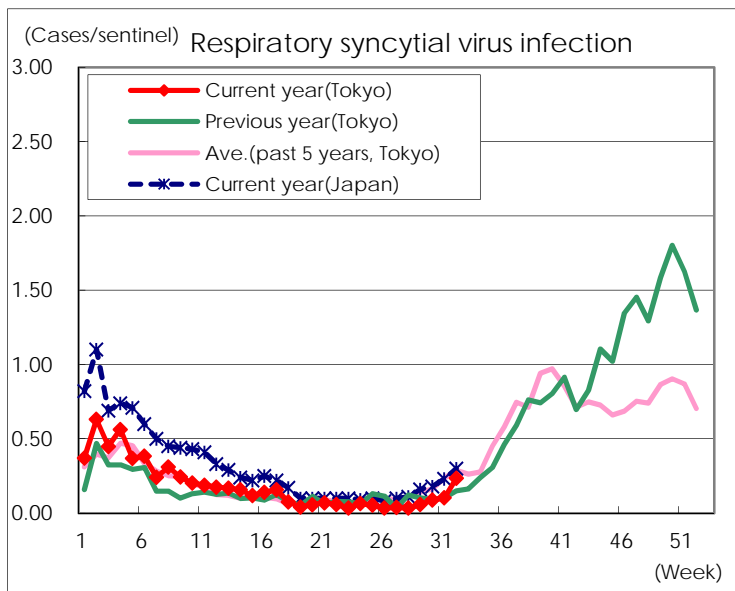
Category	Diseases	Tokyo					Japan	
		29th	30th	31st	32nd	Cum 2015	32nd	Cum 2015
V	Amebiasis	6	3		4	122	11	661
	Viral hepatitis(excluding hepatitis A and E)		1			31	3	152
	CRE infection	11	7	5	4	114	26	851
	Acute encephalitis(excluding JE and WNE)		2			30	3	315
	Cryptosporidiosis					3		9
	Creutzfeldt-Jakob disease	2			1	17	3	108
	Severe invasive streptococcal infections(TSLS)		1	4		43	3	279
	Acquired immunodeficiency syndrome (AIDS)	6	6	7	10	255	18	859
	Giardiasis	1				13	1	42
	Invasive <i>Haemophilus influenzae</i> disease				1	16	2	153
	Invasive meningococcal disease		1			7	2	22
	Invasive pneumococcal disease	4	4	4	2	211	16	1,523
	Varicella (limited to hospitalized case)		1	1	2	32	4	197
	Congenital rubella syndrome							
	Syphilis	19	14	21	23	575	28	1,392
	Disseminated cryptococcosis	1	1			8		70
	Tetanus					1	7	66
	Vancomycin-resistant <i>S. aureus</i> infection							
	Vancomycin-resistant Enterococcus infection					1	1	37
	Rubella			3		24	4	116
Measles					9	1	27	
MDRA infection					5	1	20	

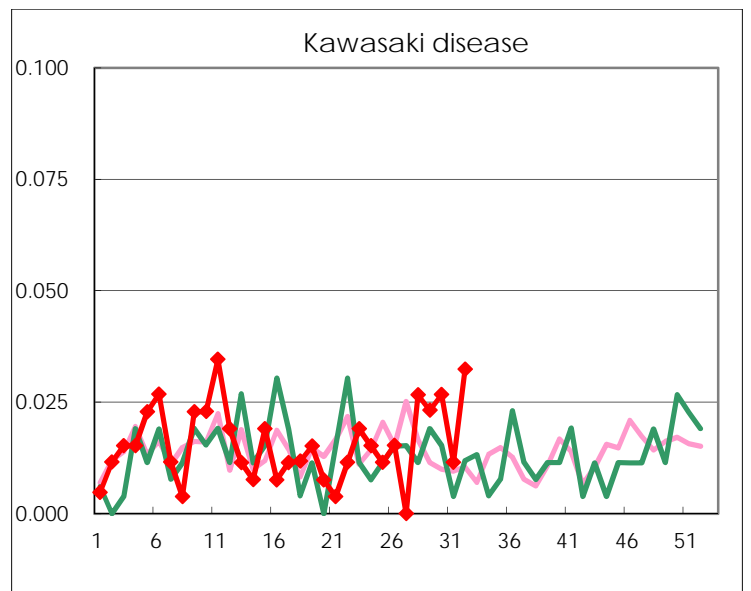
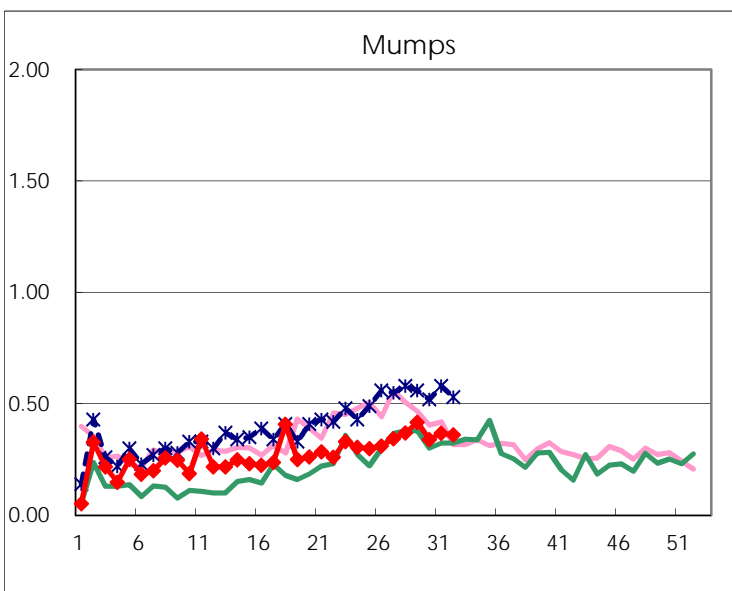
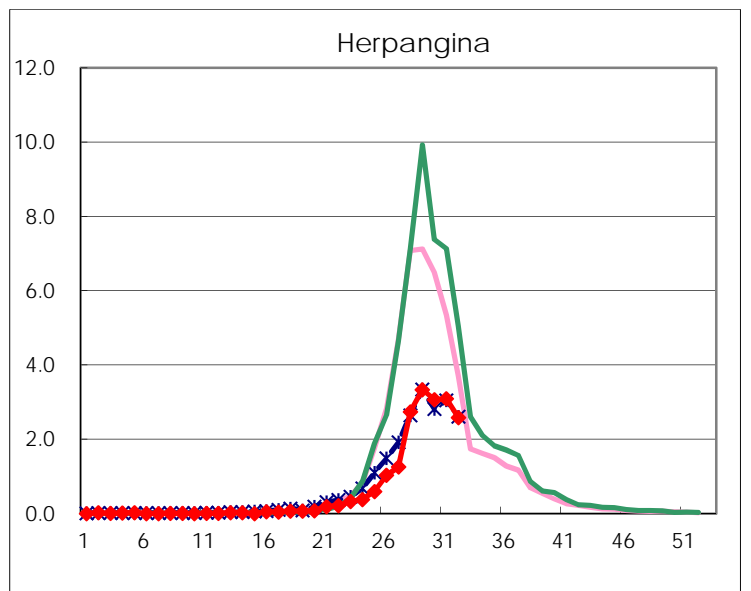
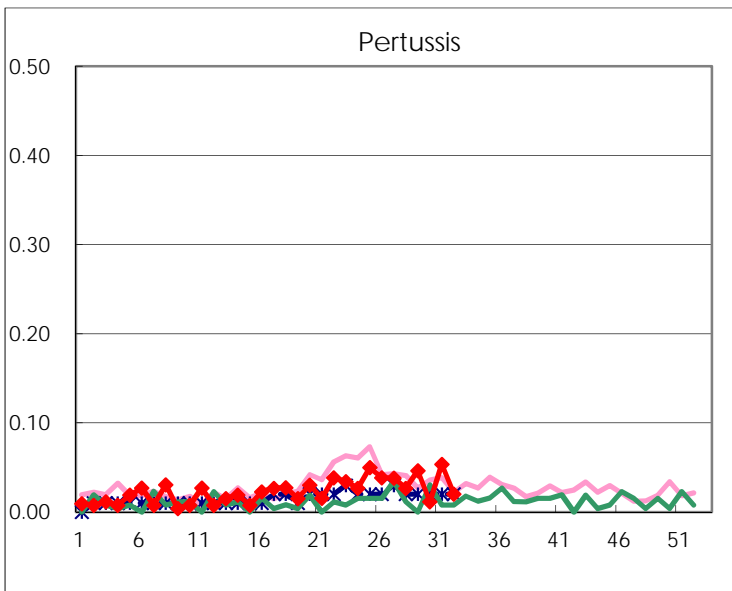
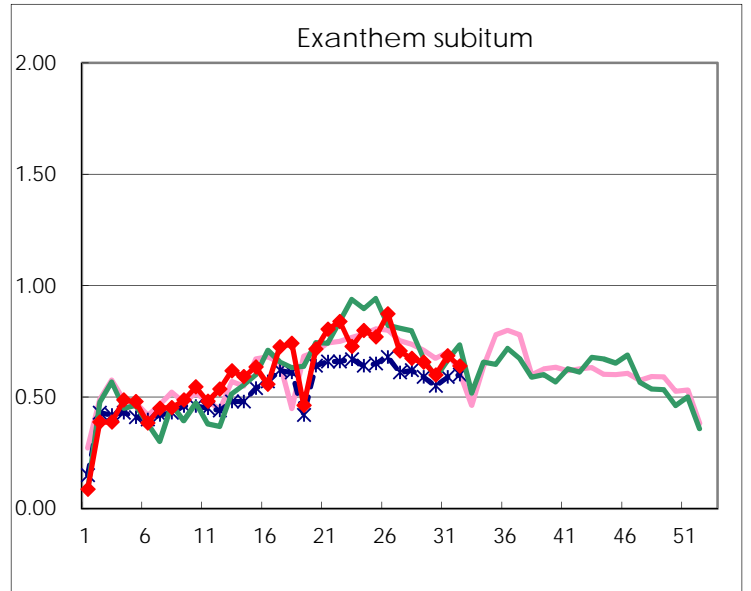
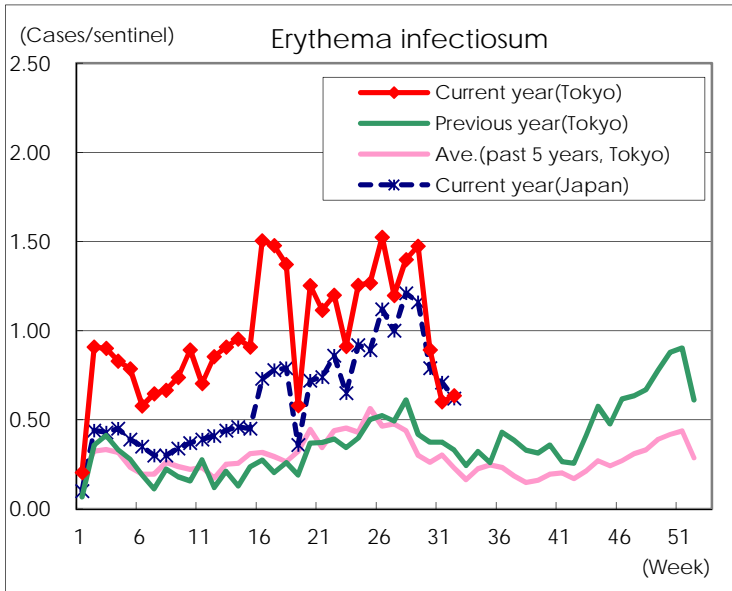
Number of patients with the diseases to be reported
by the designated clinics and hospitals

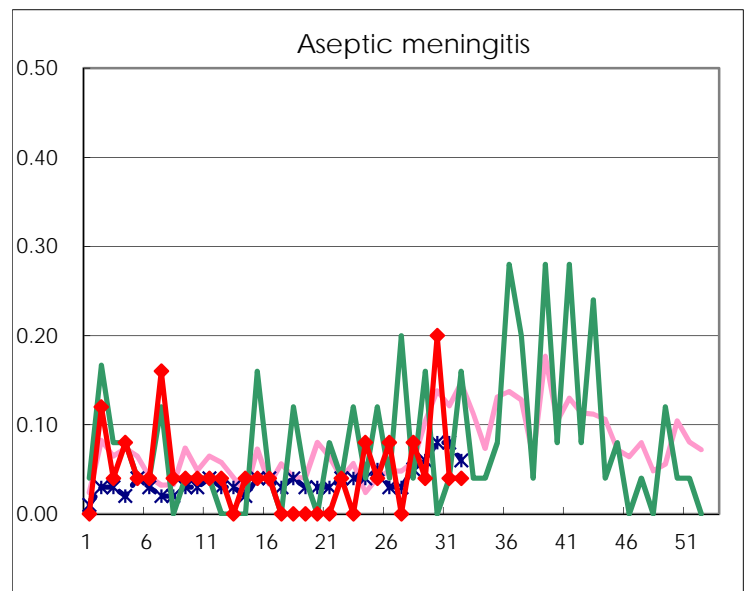
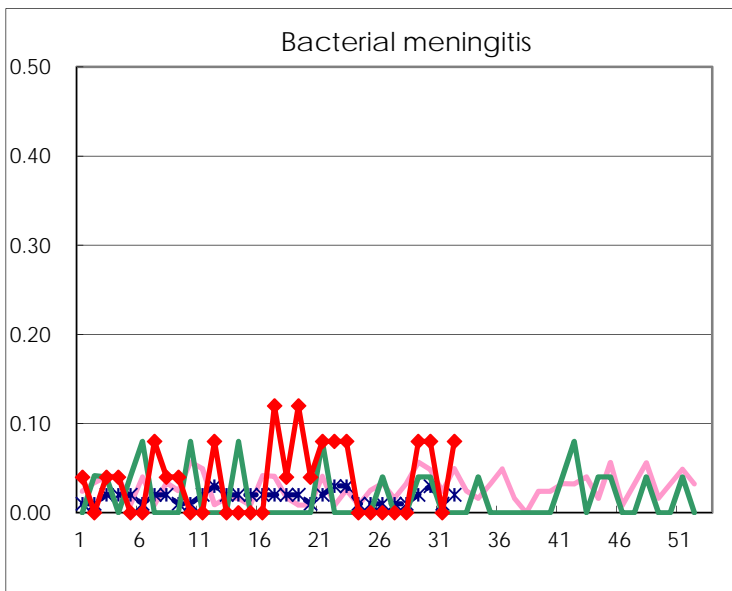
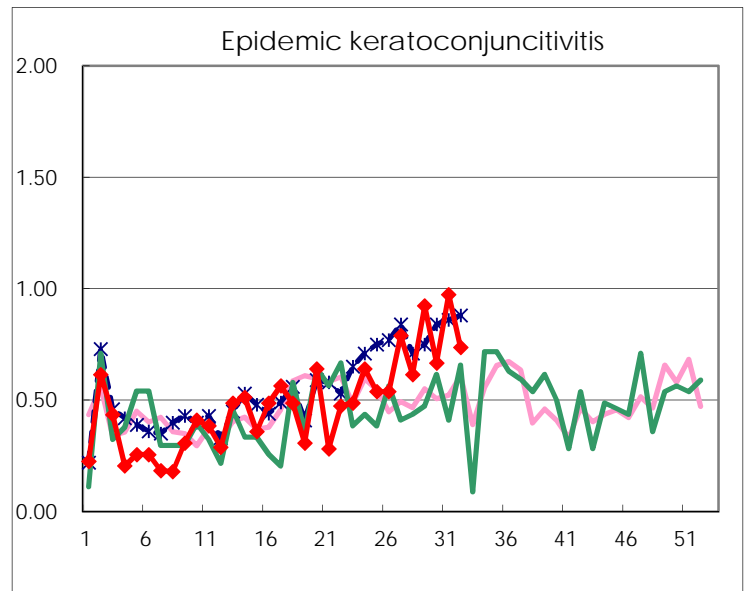
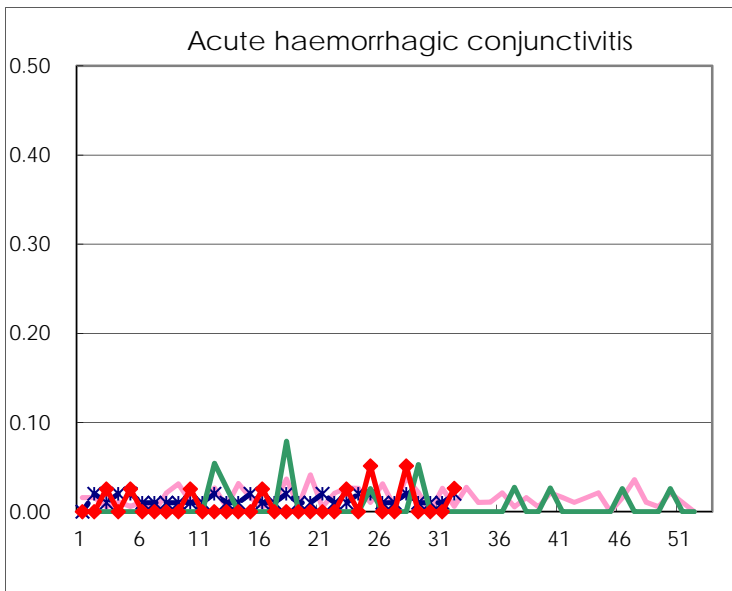
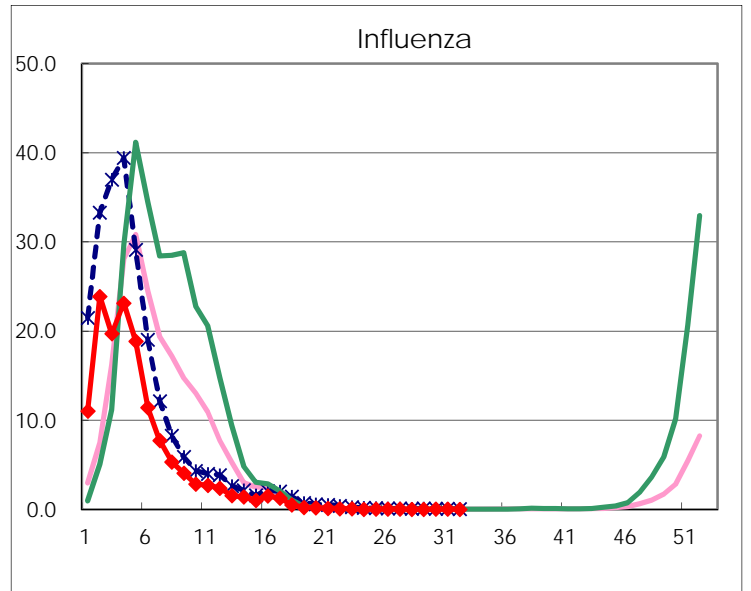
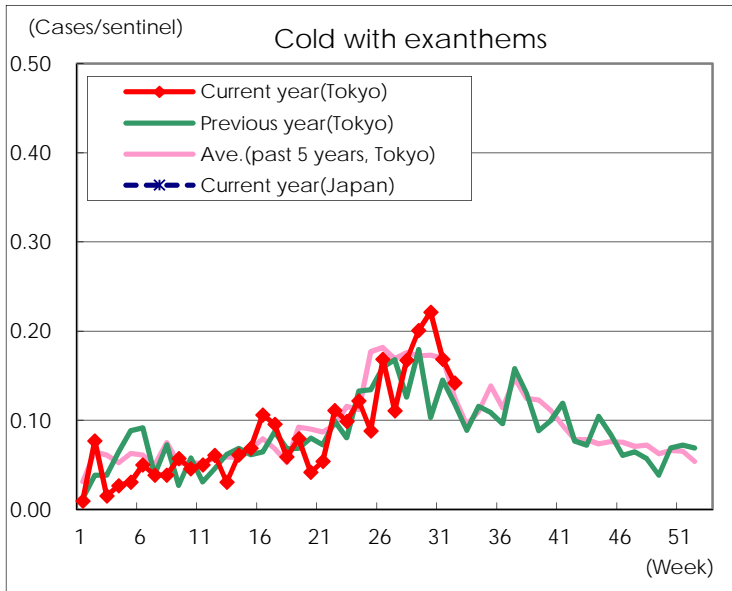
Diseases	Tokyo				
	29th	30th	31st	32nd	/sentinel
Respiratory syncytial virus infection	15	23	27	58	0.23
Pharyngoconjunctival fever	175	117	148	130	0.53
Group A streptococcal pharyngitis	712	505	468	348	1.41
Infectious gastroenteritis	1,263	982	1,065	906	3.67
Chickenpox	121	115	91	87	0.35
Hand, foot, and mouth disease	3,948	3,626	3,678	2,885	11.68
Erythema infectiosum	382	234	157	157	0.64
Exanthem subitum	170	157	179	158	0.64
Pertussis	12	3	14	5	0.02
Herpangina	865	805	807	639	2.59
Mumps	108	89	96	89	0.36
Kawasaki disease	6	7	3	8	0.03
Cold with exanthems	52	58	44	35	0.14
Influenza	7	10	11	3	0.01
Acute hemorrhagic conjunctivitis				1	0.03
Epidemic keratoconjunctivitis	36	26	38	28	0.74
Bacterial meningitis	2	2		2	0.08
Aseptic meningitis	1	5	1	1	0.04
Mycoplasma pneumonia	10	8	12	9	0.36
Chlamydial pneumonia (excluding psittacosis)	1		2	1	0.04
Infectious gastroenteritis (only by Rotavirus)					
Influenza-Associated Hospitalizations		1			

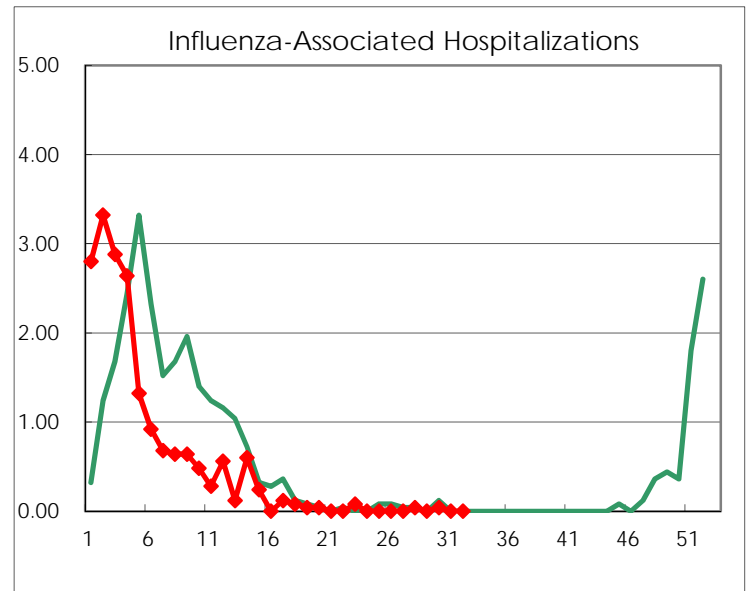
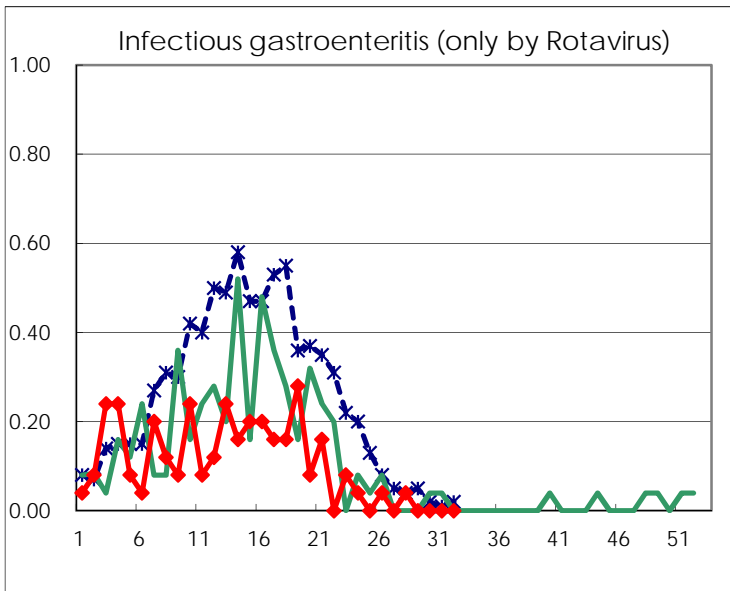
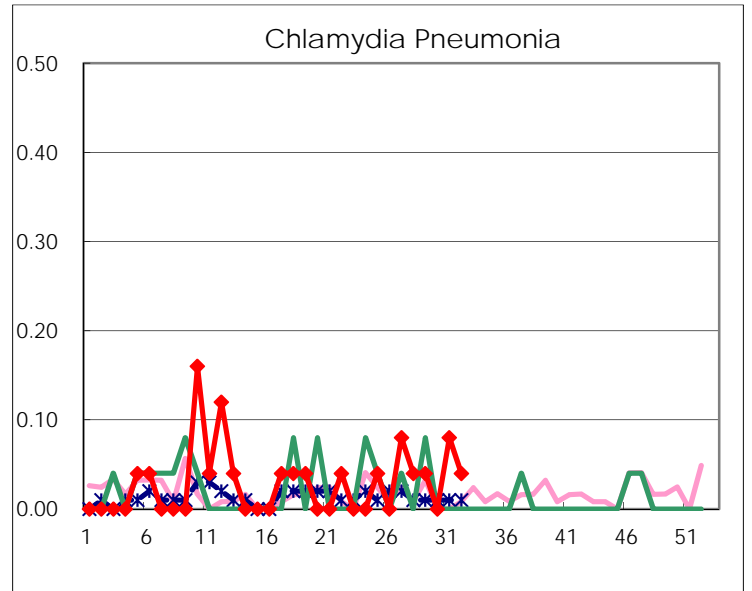
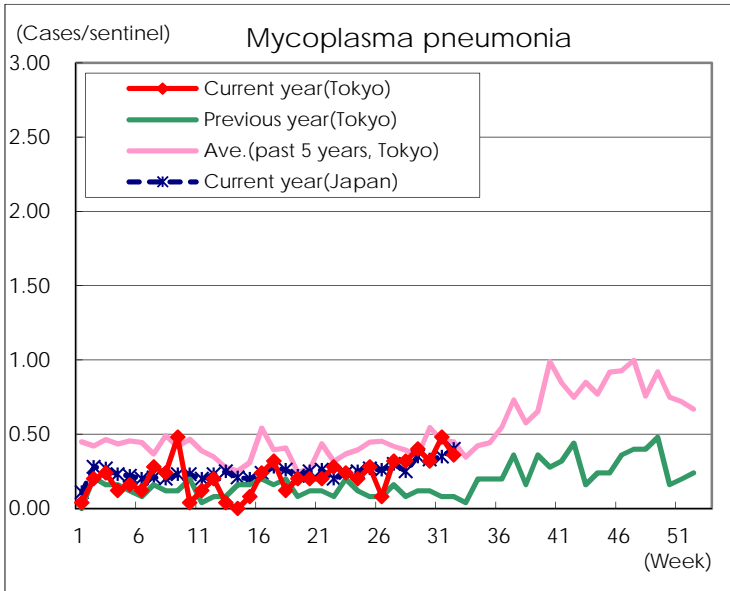
(Blank means 0.)

Disease Trend Graph (weekly reported cases per sentinel in comparison)









Number of sentinel facilities for weekly reporting		
Types of sentinels	Number of sentinels	Sentinels having reported
Pediatric	264	247
Influenza	419	394
Ophthalmic	39	38
Specially-designated	25	25