

27 August 2015 / Number 34

Surveillance System in Tokyo, Japan

The infectious diseases which all physicians must report

All physicians must report to health centers the incidence of the diseases which are shown at page one. Health centers electronically report the individual cases to Tokyo Metropolitan Infectious Disease Surveillance Center.

The infectious diseases required to be reported by the sentinels

The numbers of patients who visit the sentinel clinics or hospitals during a week are reported to health centers in Tokyo. And they electronically report the numbers to Tokyo Metropolitan Infectious Disease Surveillance Center. We have about 500 sentinel clinics and hospitals in Tokyo.

Tokyo Metropolitan Institute of Public Health

TEL:81-3-3363-3213 FAX:81-3-5332-7365

e-mail:www@tokyo-eiken.go.jp

URL:idsc.tokyo-eiken.go.jp/

Number of patients with the diseases which all physicians must report

Category	Diseases	Tokyo					Japan	
		31st	32nd	33rd	34th	Cum 2015	34th	Cum 2015
I	Ebola hemorrhagic fever							
	Crimean-Congo hemorrhagic fever							
	Smallpox							
	South American hemorrhagic fever							
	Plague							
	Marburg disease							
	Lassa fever							
II	Acute poliomyelitis							
	Tuberculosis	89	61	58	64	2,379	333	15,490
	Diphtheria							
	Severe Acute Respiratory Syndrome(SARS)							
	Middle East Respiratory Syndrome (MERS)							
	Avian influenza H5N1							
	Avian influenza H7N9							
III	Cholera							3
	Shigellosis	2	2		2	42	6	103
	Enterohemorrhagic Escherichia coli infection	19	14	19	15	235	145	2,224
	Typhoid fever	1				8		22
	Paratyphoid fever					5		23
IV	Hepatitis E	1				19	3	126
	West Nile fever							
	Hepatitis A				1	30	1	171
	Echinococcosis					1		8
	Yellow fever							
	Psittacosis							5
	Omsk hemorrhagic fever							
	Relapsing fever							3
	Kyasanur forest disease							
	Q fever							
	Rabies							
	Coccidioidomycosis					1		2
	Monkeypox							
	Severe Fever with Thrombocytopenia Syndrome						2	42
	Hemorrhagic fever with renal syndrome							
	Western equine encephalitis							
	Tick-borne encephalitis							
	Anthrax							
	Chikungunya fever					6		11
	Scrub typhus(Tsutsugamushi disease)				2	4	2	76
	Dengue fever		1	3	5	47	9	162
	Eastern equine encephalitis							
	Avian influenza (excluding H5N1 and H7N9)							
	Nipah virus infection							
	Japanese spotted fever						4	99
	Japanese encephalitis							
	Hantavirus pulmonary syndrome							
	Herpes B virus infection							
	Glanders							
	Brucellosis					2		4
	Venezuelan equine encephalitis							
	Hendra virus infection							
Epidemic typhus								
Botulism								
Malaria	2	1		1	12	1	25	
Tularemia							1	
Lyme disease					1	1	7	
Lyssavirus infection(excluding rabies)								
Rift valley fever								
Melioidosis								
Legionellosis	3	1	3	5	79	9	938	
Leptospirosis					5		9	
Rocky mountain spotted fever								

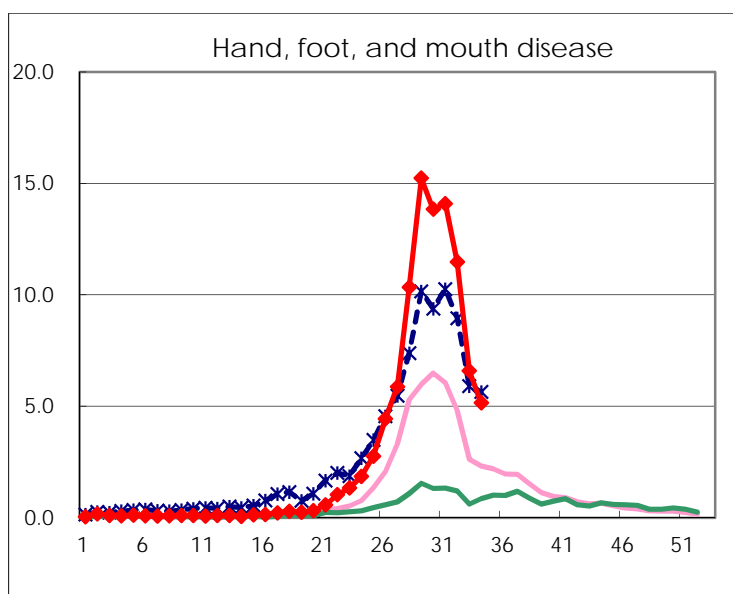
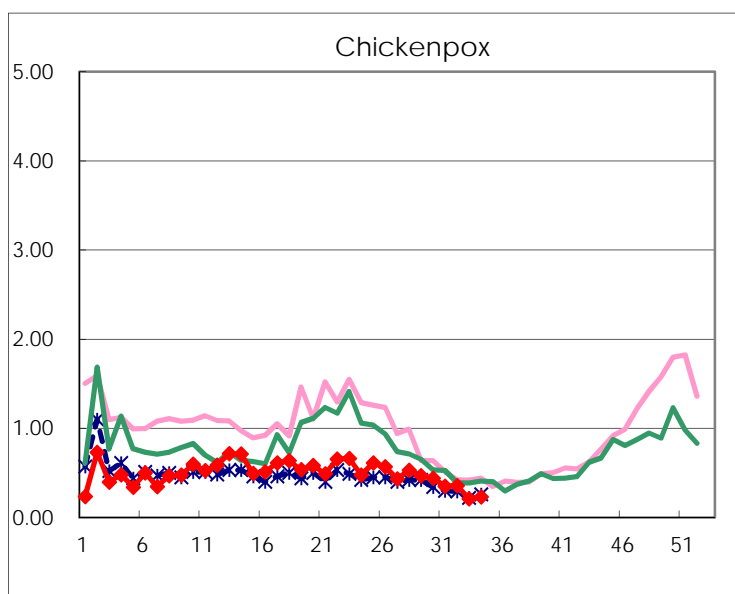
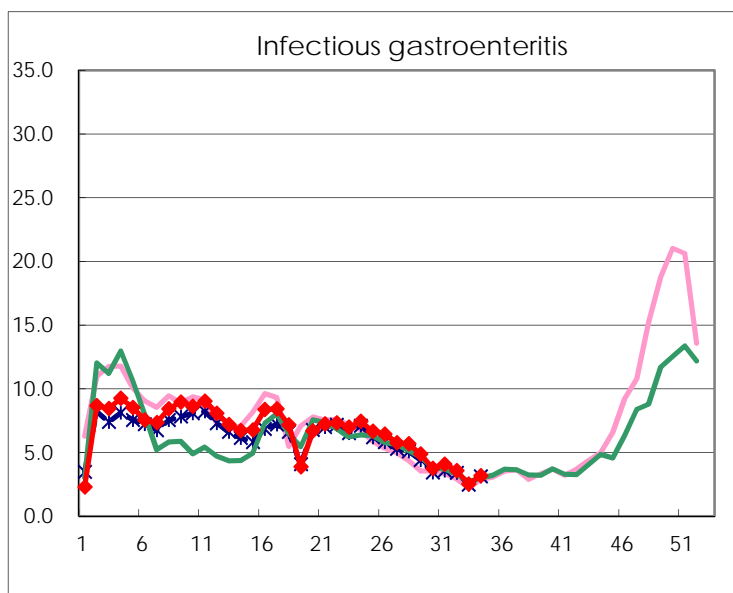
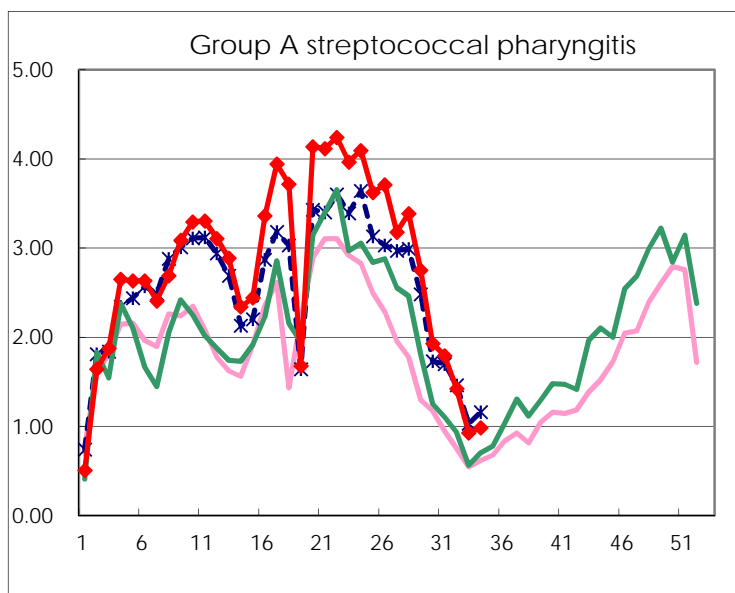
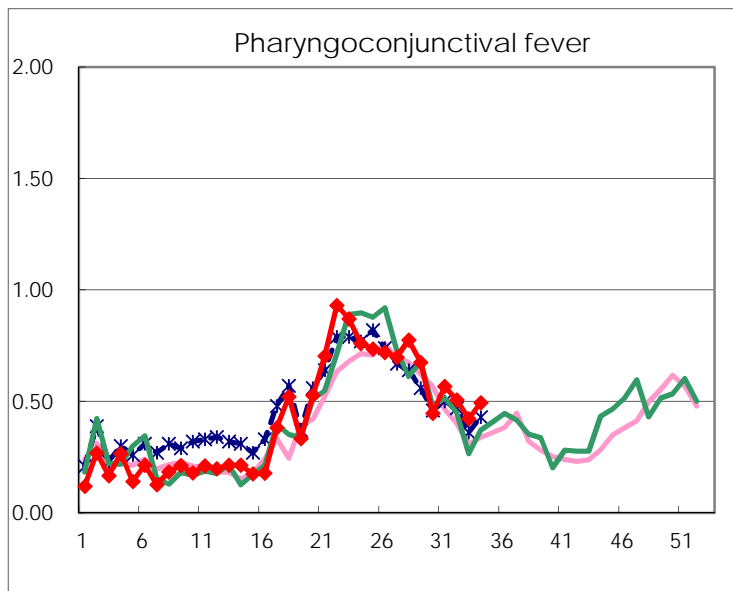
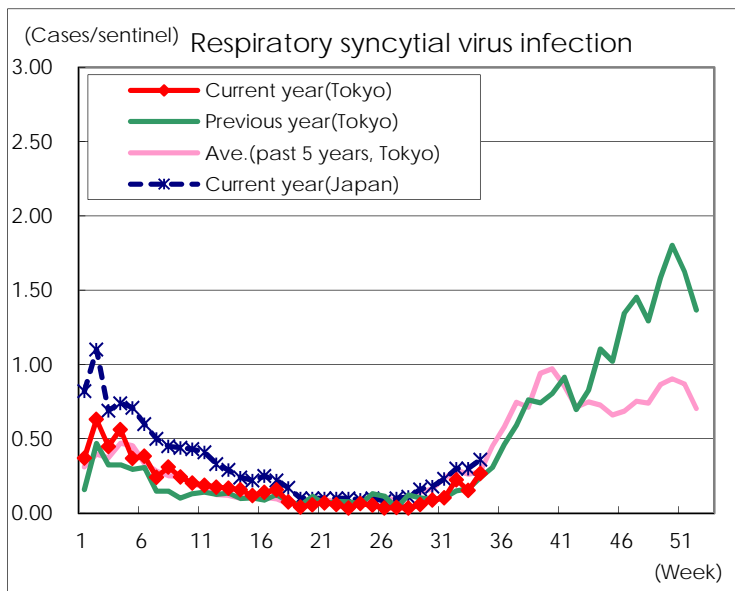
Category	Diseases	Tokyo					Japan	
		31st	32nd	33rd	34th	Cum 2015	34th	Cum 2015
V	Amebiasis		4	5	3	130	19	715
	Viral hepatitis(excluding hepatitis A and E)			1	1	33	1	159
	CRE infection	5	4	11	11	136	38	957
	Acute encephalitis(excluding JE and WNE)			2		32	6	336
	Cryptosporidiosis					3		9
	Creutzfeldt-Jakob disease		1	1		18	4	115
	Severe invasive streptococcal infections(TSLS)	4		2	1	46	5	291
	Acquired immunodeficiency syndrome (AIDS)	7	10	7	11	273	13	918
	Giardiasis				1	14	1	48
	Invasive <i>Haemophilus influenzae</i> disease		1		1	17	4	164
	Invasive meningococcal disease					7		22
	Invasive pneumococcal disease	4	2	1	1	213	7	1,561
	Varicella (limited to hospitalized case)	1	2		1	33	3	205
	Congenital rubella syndrome							
	Syphilis	21	23	22	23	620	41	1,511
	Disseminated cryptococcosis					8	1	74
	Tetanus					1	3	72
	Vancomycin-resistant <i>S. aureus</i> infection							
	Vancomycin-resistant Enterococcus infection					1	2	39
	Rubella	3		1		25	1	123
Measles					9	1	27	
MDRA infection			1		6	1	23	

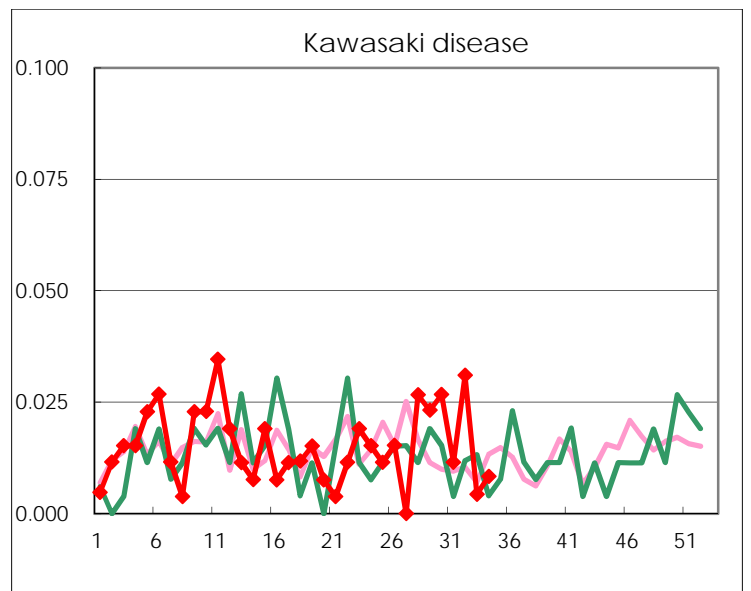
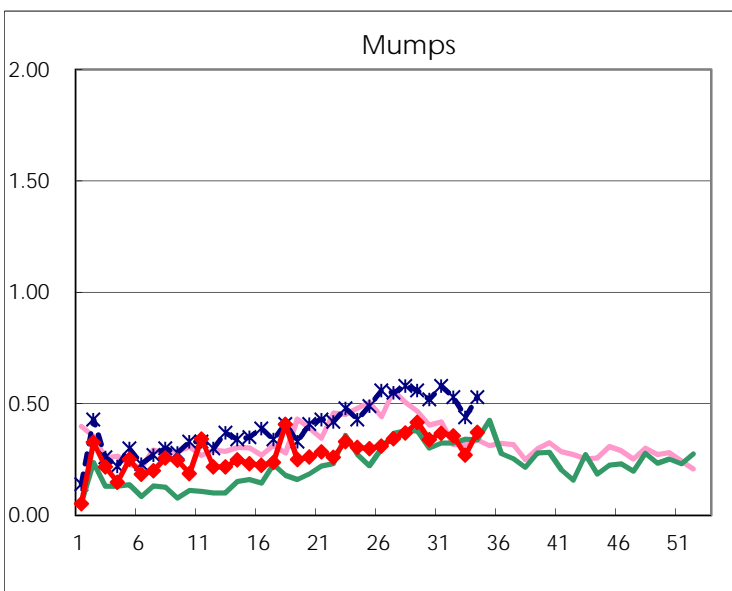
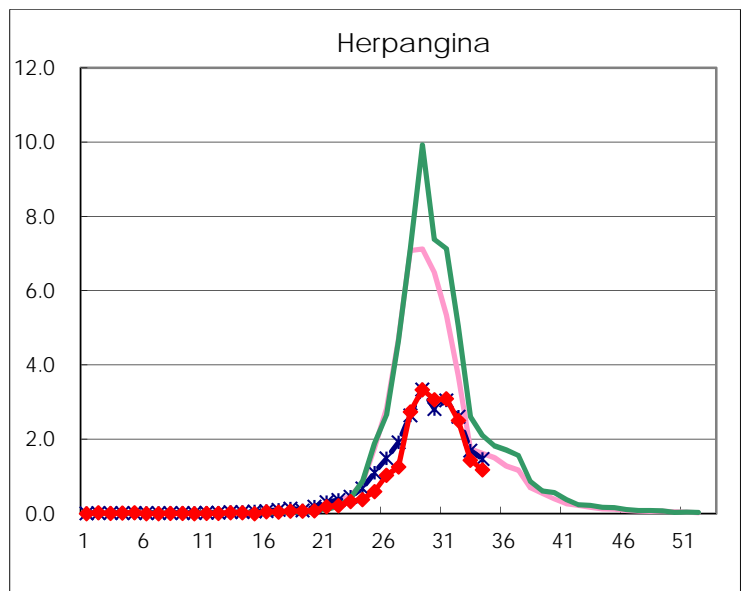
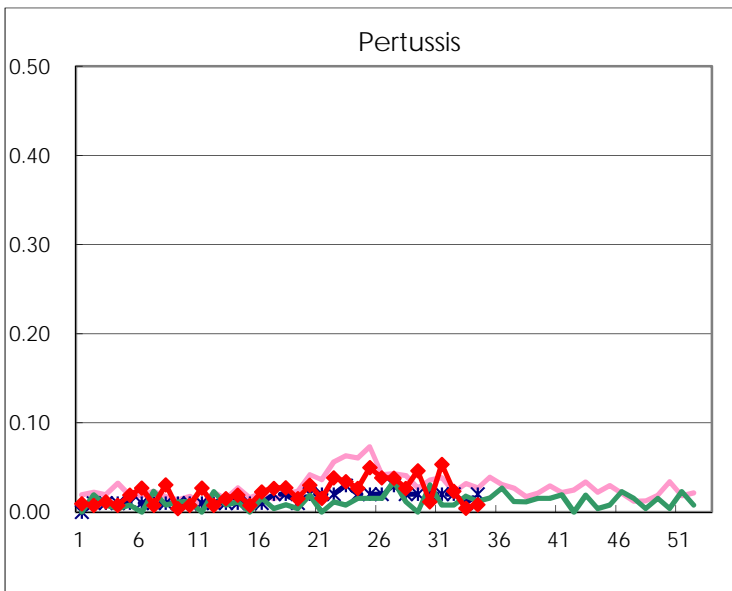
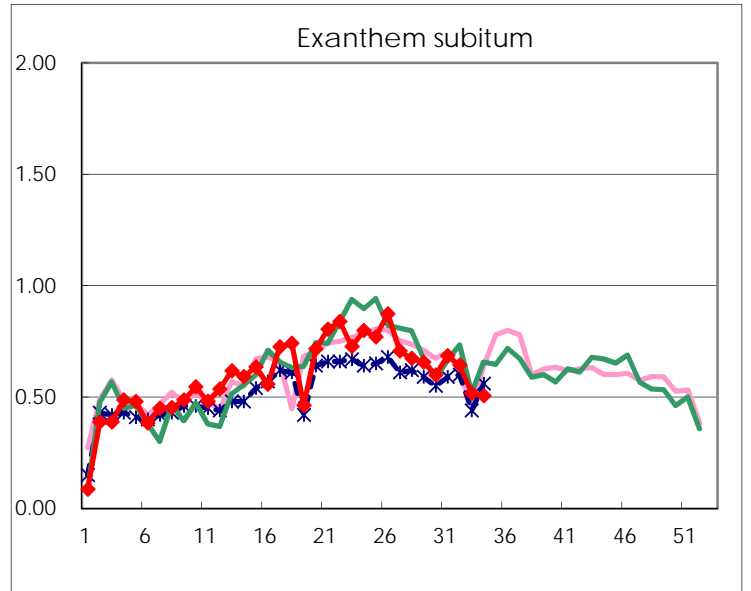
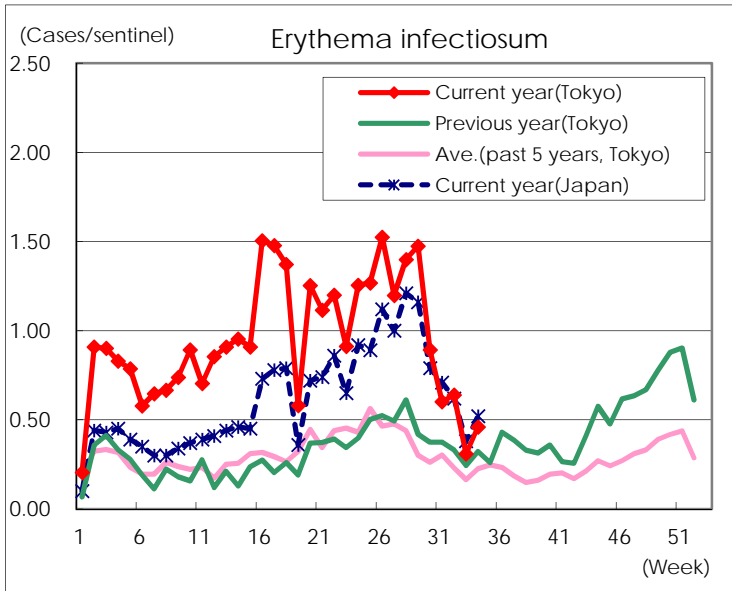
Number of patients with the diseases to be reported
by the designated clinics and hospitals

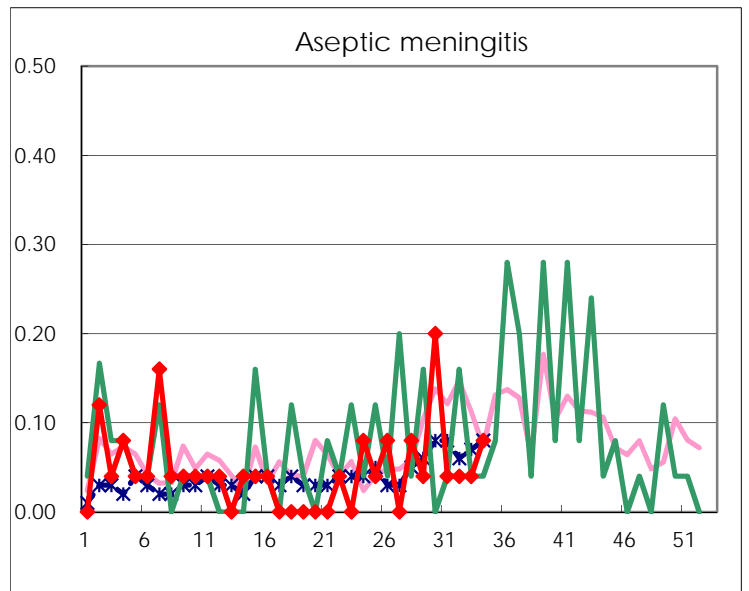
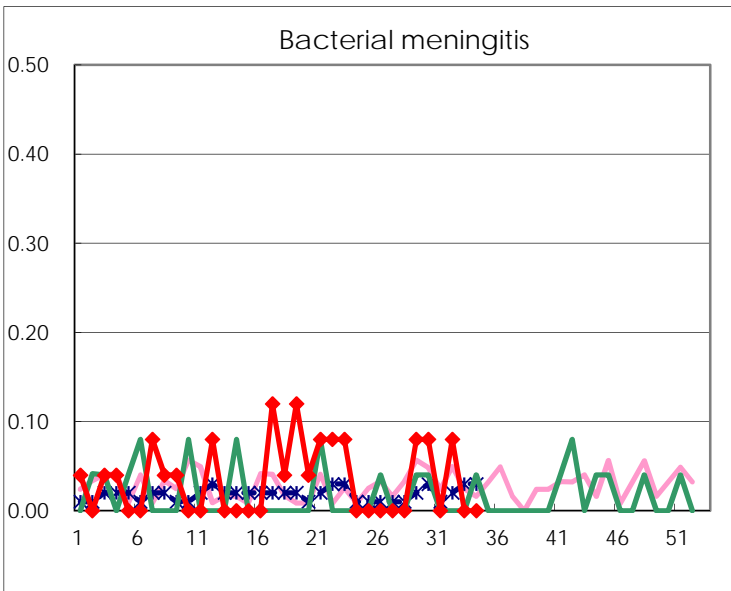
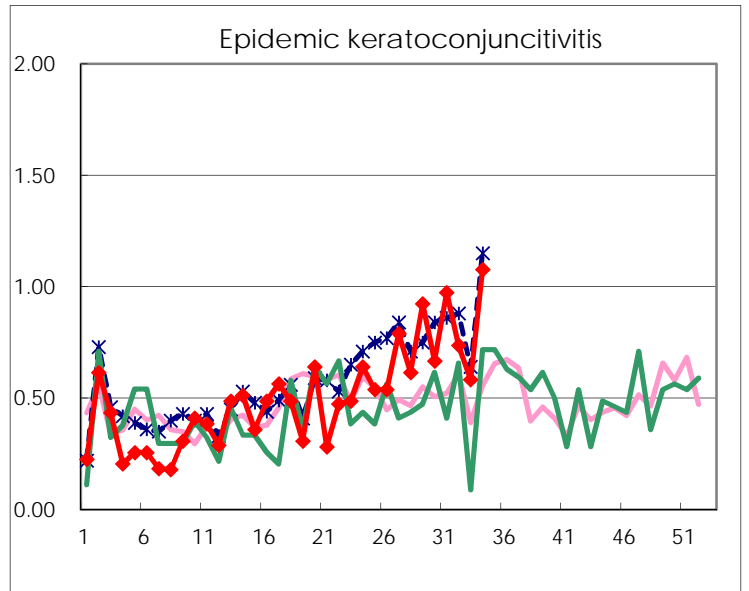
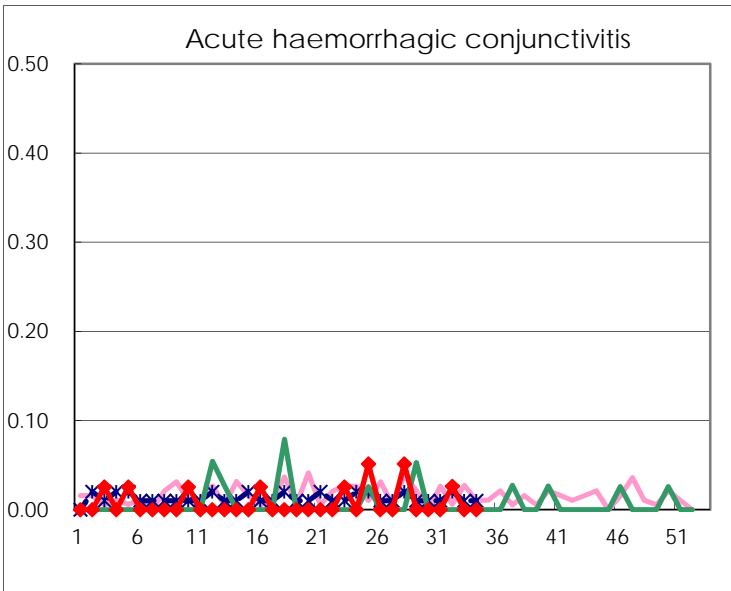
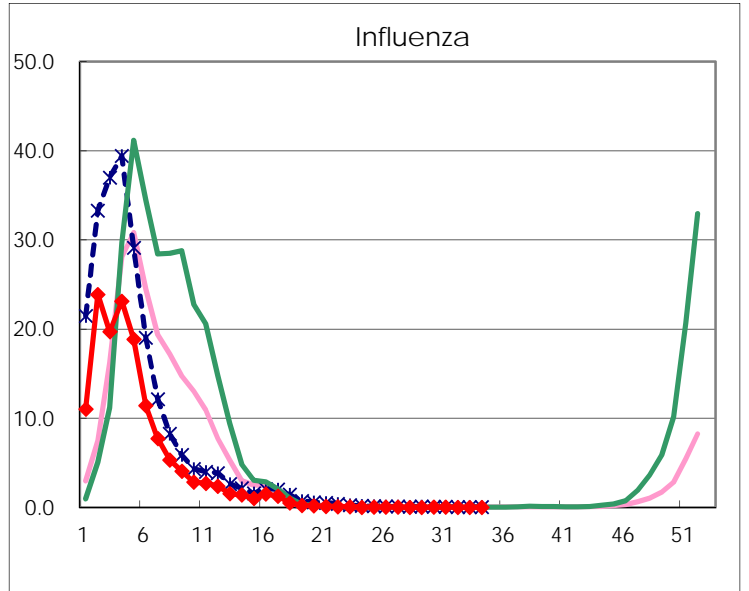
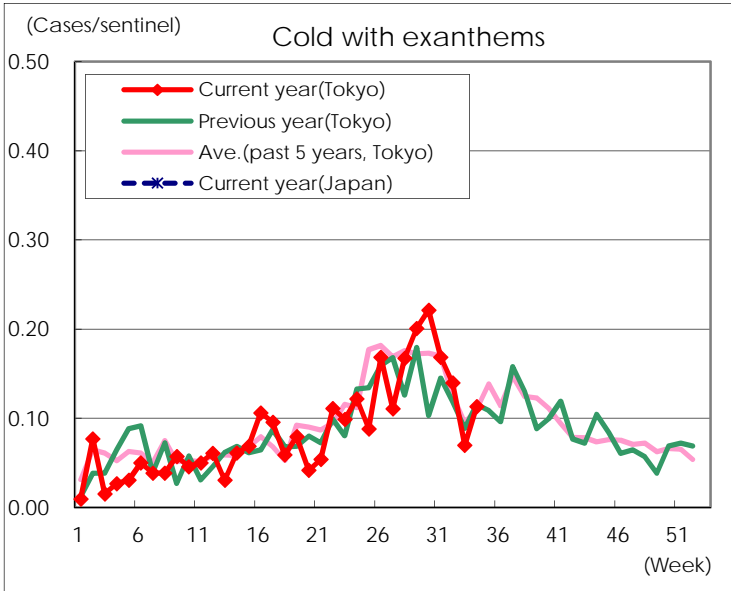
Diseases	Tokyo				
	31st	32nd	33rd	34th	/sentinel
Respiratory syncytial virus infection	27	58	35	64	0.27
Pharyngoconjunctival fever	148	131	97	118	0.49
Group A streptococcal pharyngitis	468	367	213	235	0.98
Infectious gastroenteritis	1,065	924	576	759	3.18
Chickenpox	91	92	48	55	0.23
Hand, foot, and mouth disease	3,678	2,960	1,517	1,232	5.15
Erythema infectiosum	157	165	71	110	0.46
Exanthem subitum	179	166	119	121	0.51
Pertussis	14	6	1	2	0.01
Herpangina	807	647	332	282	1.18
Mumps	96	92	62	89	0.37
Kawasaki disease	3	8	1	2	0.01
Cold with exanthems	44	36	16	27	0.11
Influenza	11	3	4	4	0.01
Acute hemorrhagic conjunctivitis		1			
Epidemic keratoconjunctivitis	38	28	21	42	1.08
Bacterial meningitis		2			
Aseptic meningitis	1	1	1	2	0.08
Mycoplasma pneumonia	12	9	21	26	1.04
Chlamydial pneumonia (excluding psittacosis)	2	1	1	1	0.04
Infectious gastroenteritis (only by Rotavirus)					
Influenza-Associated Hospitalizations			1	2	0.08

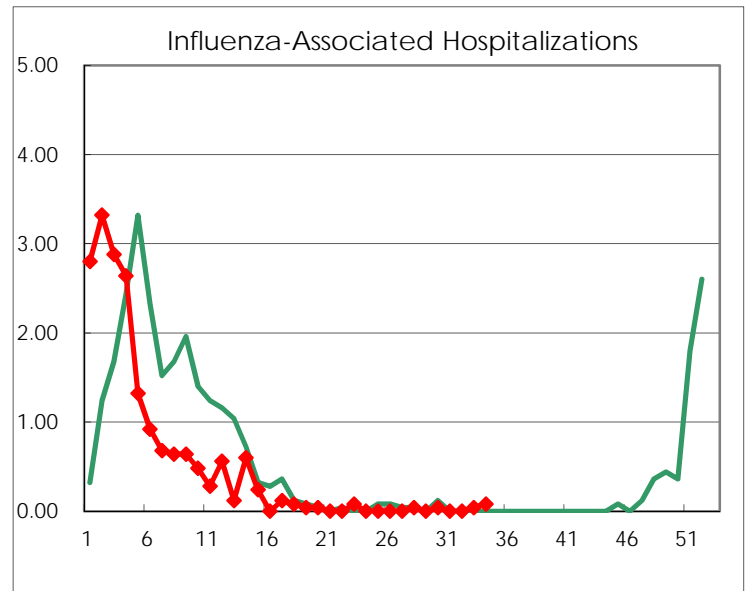
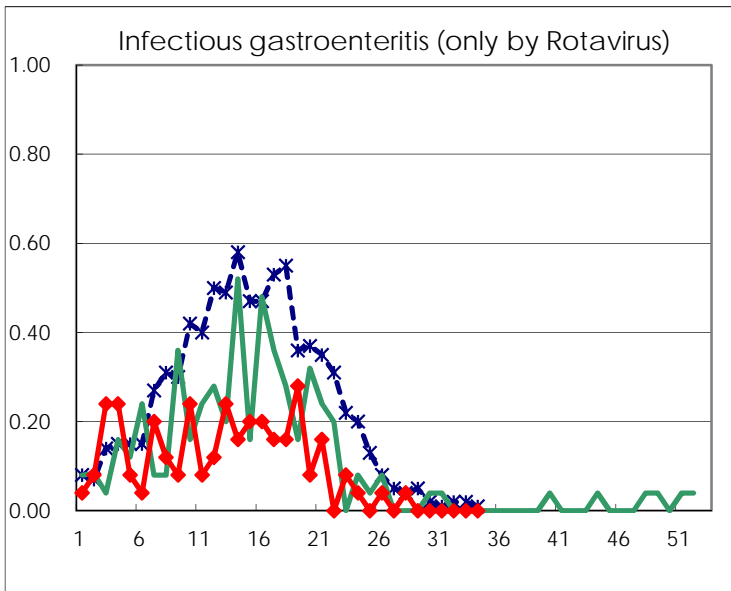
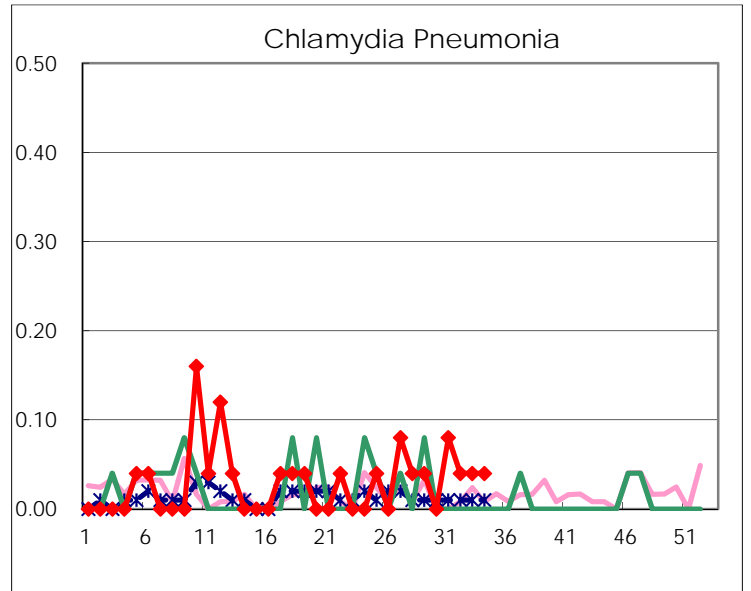
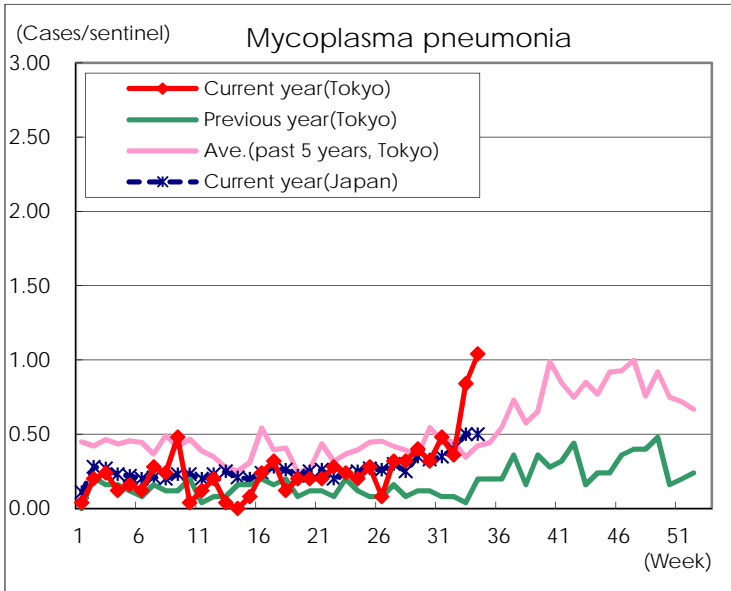
(Blank means 0.)

Disease Trend Graph (weekly reported cases per sentinel in comparison)









Number of sentinel facilities for weekly reporting		
Types of sentinels	Number of sentinels	Sentinels having reported
Pediatric	264	239
Influenza	419	383
Ophthalmic	39	39
Specially-designated	25	25