

## 3 September 2015 / Number 35

### Surveillance System in Tokyo, Japan

The infectious diseases which all physicians must report

All physicians must report to health centers the incidence of the diseases which are shown at page one. Health centers electronically report the individual cases to Tokyo Metropolitan Infectious Disease Surveillance Center.

The infectious diseases required to be reported by the sentinels

The numbers of patients who visit the sentinel clinics or hospitals during a week are reported to health centers in Tokyo. And they electronically report the numbers to Tokyo Metropolitan Infectious Disease Surveillance Center. We have about 500 sentinel clinics and hospitals in Tokyo.

Tokyo Metropolitan Institute of Public Health

TEL:81-3-3363-3213 FAX:81-3-5332-7365

e-mail:[www@tokyo-eiken.go.jp](mailto:www@tokyo-eiken.go.jp)

URL:[idsc.tokyo-eiken.go.jp/](http://idsc.tokyo-eiken.go.jp/)

---

Number of patients with the diseases which all physicians must report

Category	Diseases	Tokyo					Japan	
		32nd	33rd	34th	35th	Cum 2015	35th	Cum 2015
I	Ebola hemorrhagic fever							
	Crimean-Congo hemorrhagic fever							
	Smallpox							
	South American hemorrhagic fever							
	Plague							
	Marburg disease							
	Lassa fever							
II	Acute poliomyelitis							
	Tuberculosis	61	58	68	61	2,444	370	16,026
	Diphtheria							
	Severe Acute Respiratory Syndrome(SARS)							
	Middle East Respiratory Syndrome (MERS)							
	Avian influenza H5N1							
	Avian influenza H7N9							
III	Cholera							3
	Shigellosis	2		2	1	43	1	105
	Enterohemorrhagic Escherichia coli infection	14	19	15	19	254	149	2,400
	Typhoid fever					8		22
	Paratyphoid fever					5		23
IV	Hepatitis E					19		129
	West Nile fever							
	Hepatitis A			1		30	5	176
	Echinococcosis					1		8
	Yellow fever							
	Psittacosis							5
	Omsk hemorrhagic fever							
	Relapsing fever							3
	Kyasanur forest disease							
	Q fever							
	Rabies							
	Coccidioidomycosis					1		2
	Monkeypox							
	Severe Fever with Thrombocytopenia Syndrome						1	43
	Hemorrhagic fever with renal syndrome							
	Western equine encephalitis							
	Tick-borne encephalitis							
	Anthrax							
	Chikungunya fever					6		11
	Scrub typhus(Tsutsugamushi disease)			2		4	1	77
	Dengue fever	1	3	5	6	53	12	174
	Eastern equine encephalitis							
	Avian influenza (excluding H5N1 and H7N9)							
	Nipah virus infection							
	Japanese spotted fever						6	105
	Japanese encephalitis							
	Hantavirus pulmonary syndrome							
	Herpes B virus infection							
	Glanders							
	Brucellosis					2		4
	Venezuelan equine encephalitis							
	Hendra virus infection							
Epidemic typhus								
Botulism								
Malaria	1		1		12	3	28	
Tularemia						1	2	
Lyme disease					1		7	
Lyssavirus infection(excluding rabies)								
Rift valley fever								
Melioidosis				1	1	1	1	
Legionellosis	1	3	5	4	83	26	970	
Leptospirosis					5		9	
Rocky mountain spotted fever								

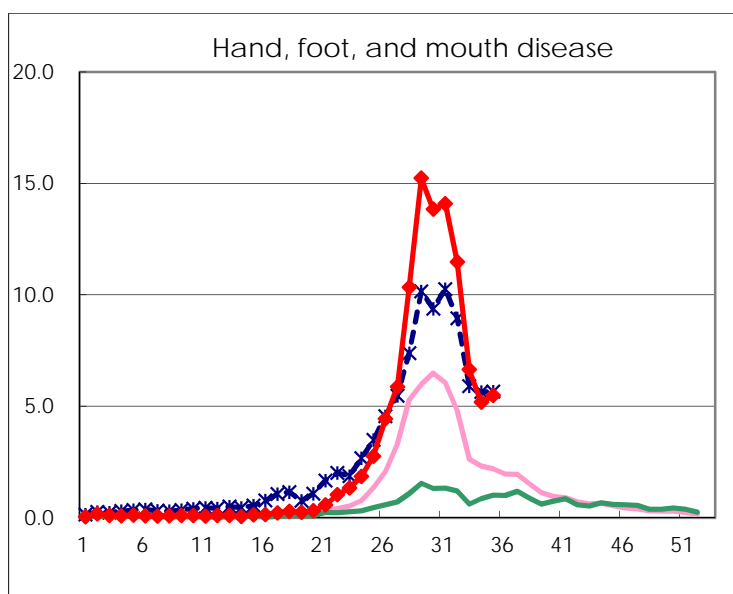
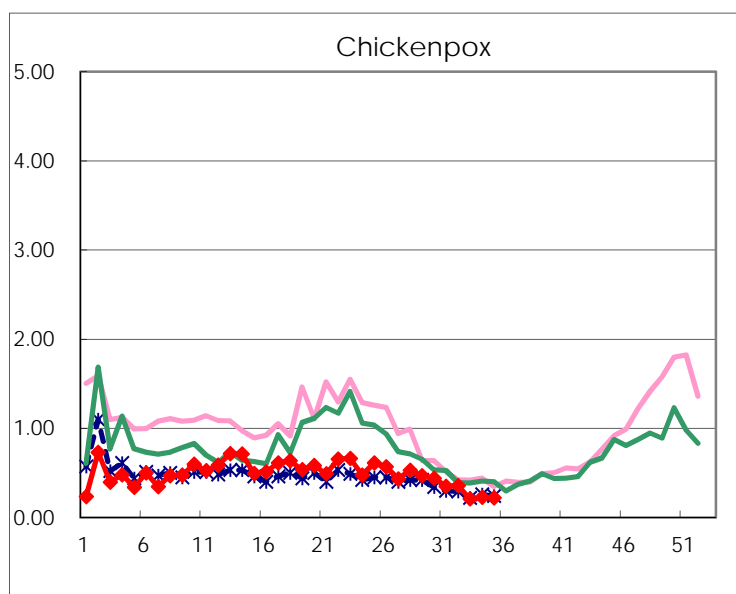
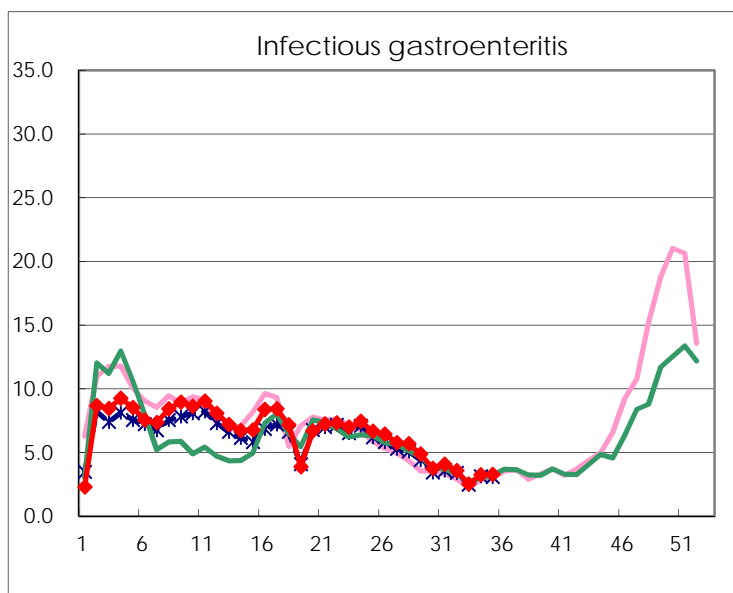
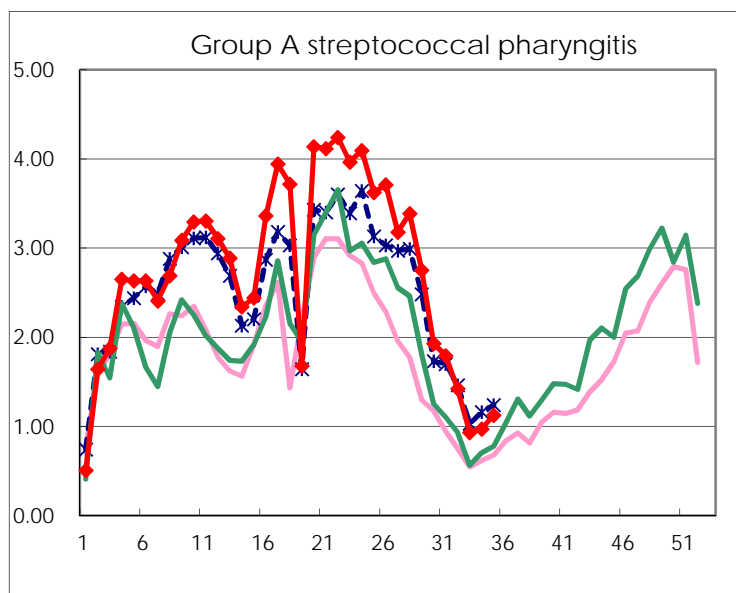
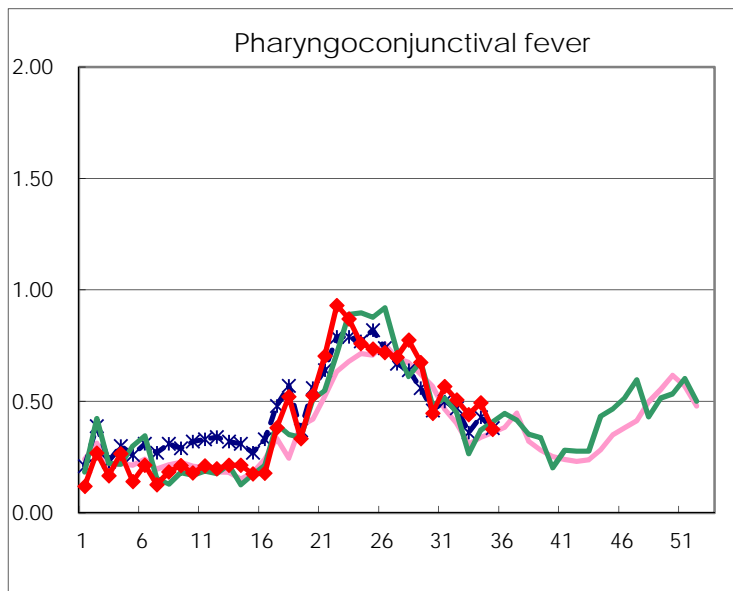
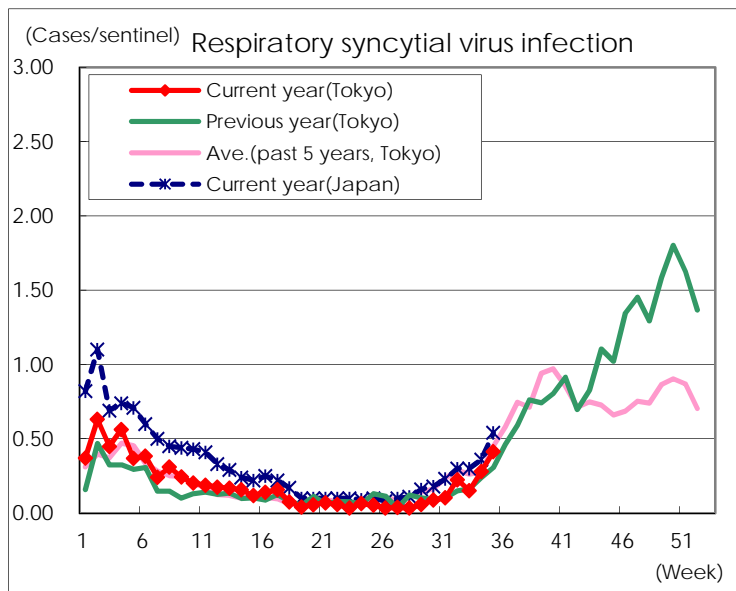
Category	Diseases	Tokyo					Japan	
		32nd	33rd	34th	35th	Cum 2015	35th	Cum 2015
V	Amebiasis	4	5	3	3	133	19	741
	Viral hepatitis(excluding hepatitis A and E)		1	1	2	35	2	167
	CRE infection	4	12	12	8	146	25	1,002
	Acute encephalitis(excluding JE and WNE)		2		1	33	5	348
	Cryptosporidiosis					3		9
	Creutzfeldt-Jakob disease	1	1			18	4	120
	Severe invasive streptococcal infections(TSLS)		2	1	1	47	5	299
	Acquired immunodeficiency syndrome (AIDS)	10	7	11	10	283	17	944
	Giardiasis			1		14	1	50
	Invasive <i>Haemophilus influenzae</i> disease	1		1		17	1	166
	Invasive meningococcal disease					7		23
	Invasive pneumococcal disease	2	1	1	2	215	10	1,576
	Varicella (limited to hospitalized case)	2		1		33	1	208
	Congenital rubella syndrome							
	Syphilis	23	22	23	22	642	57	1,586
	Disseminated cryptococcosis					8	1	77
	Tetanus					1	1	75
	Vancomycin-resistant <i>S. aureus</i> infection							
	Vancomycin-resistant Enterococcus infection					1	2	42
	Rubella		1			25	3	125
Measles					9		28	
MDRA infection		1			6		23	

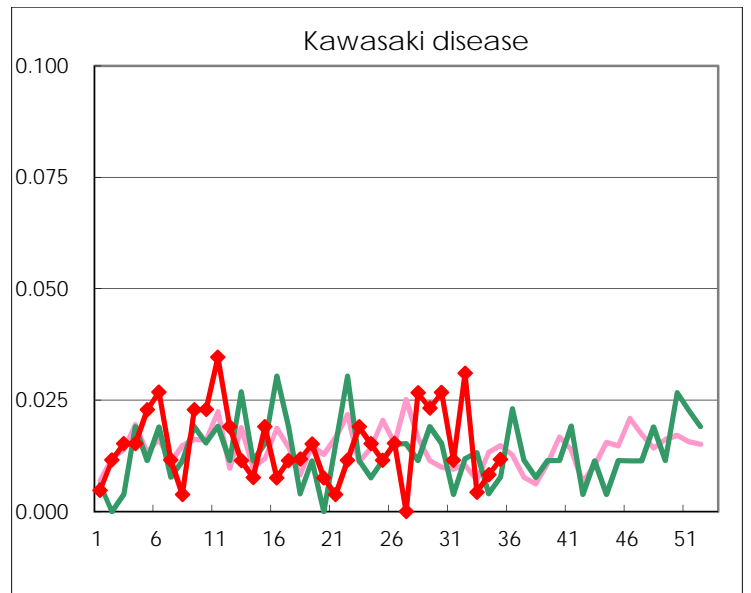
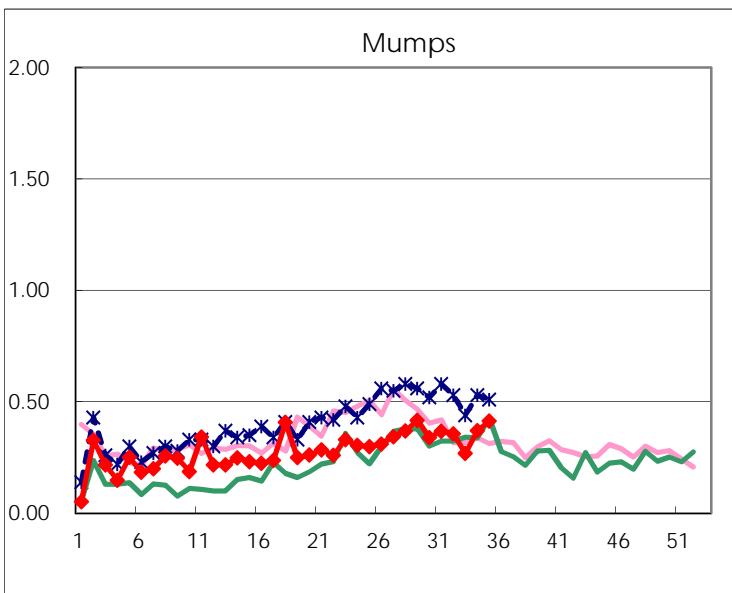
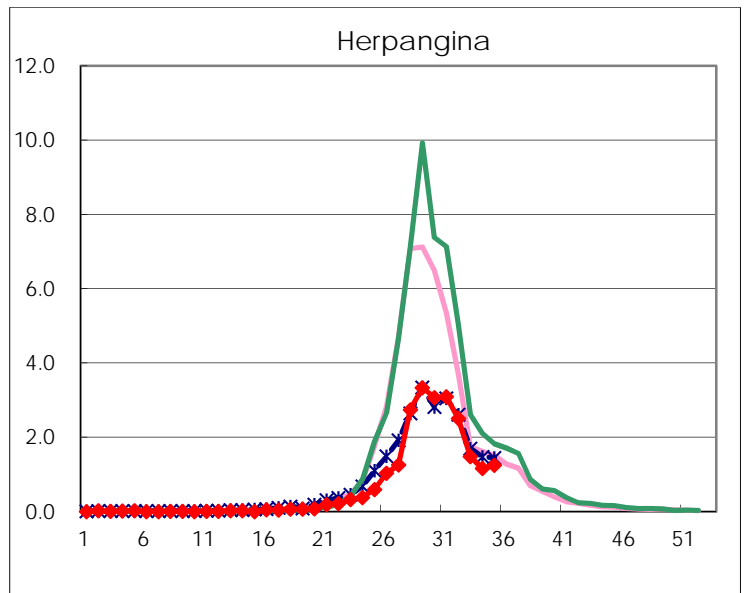
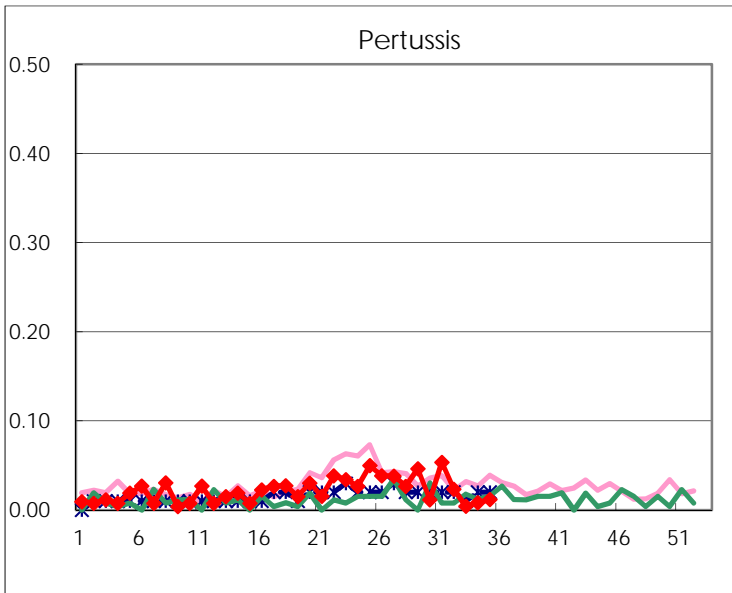
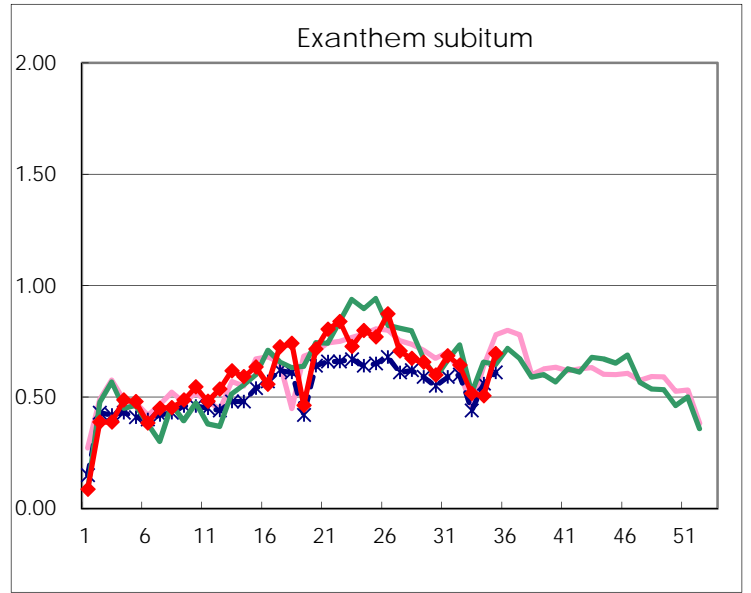
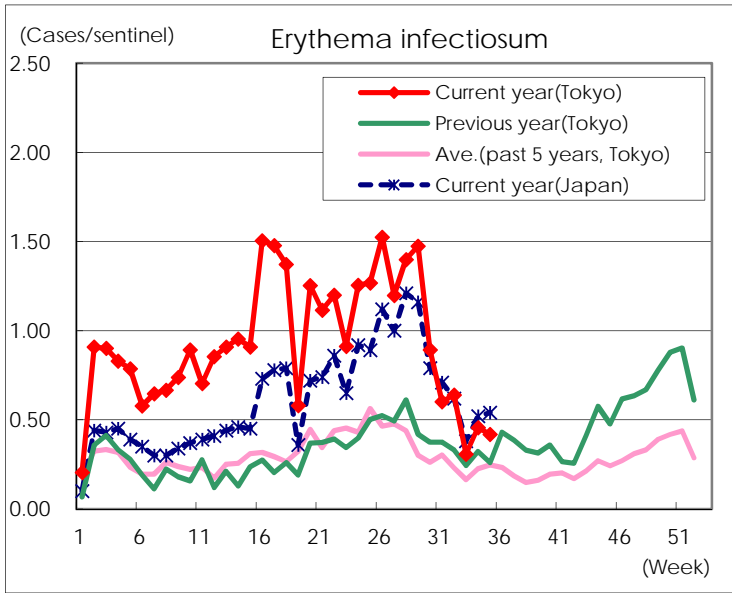
Number of patients with the diseases to be reported  
by the designated clinics and hospitals

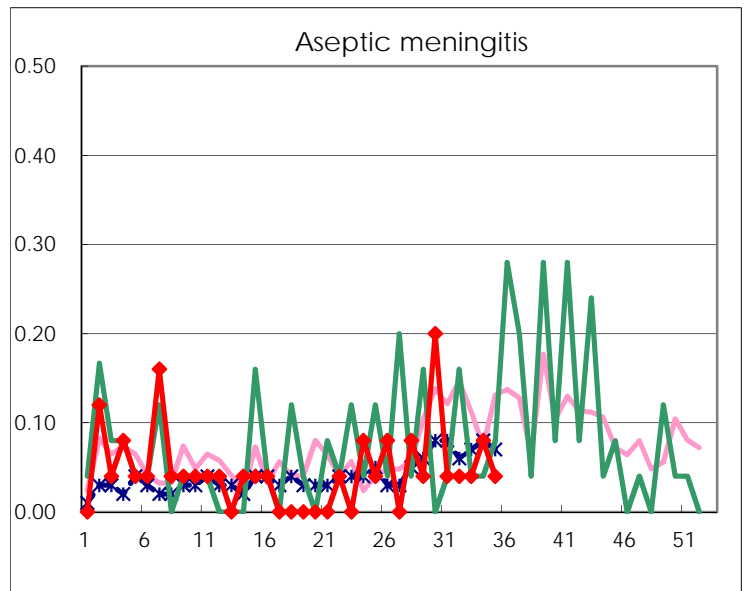
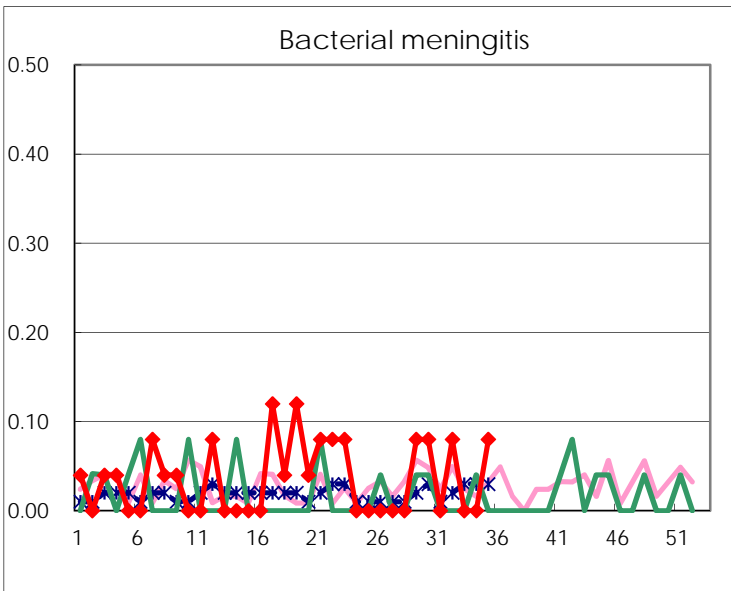
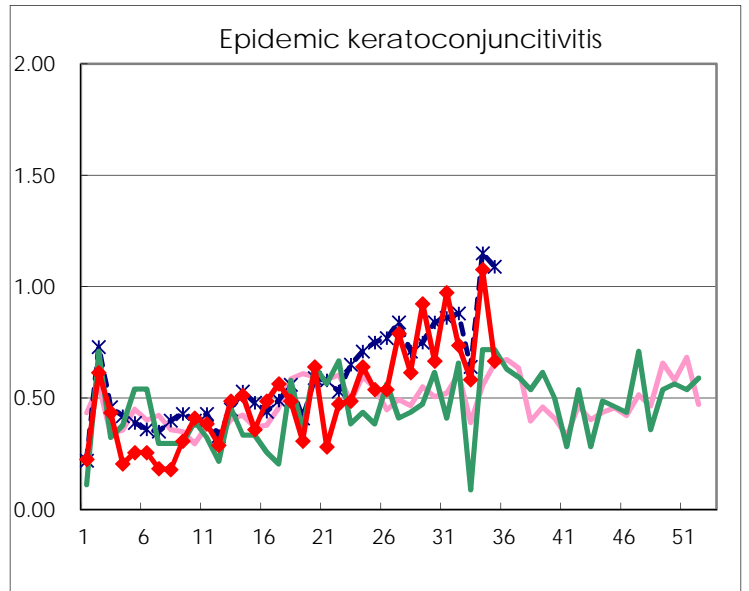
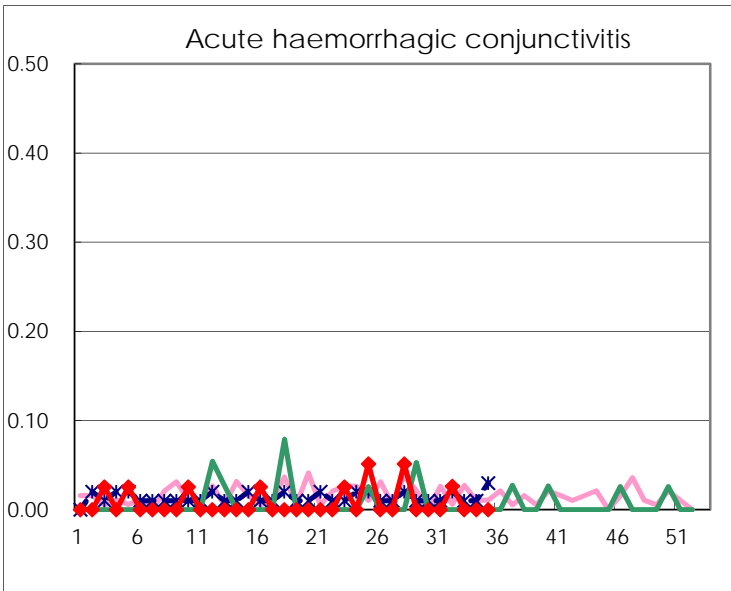
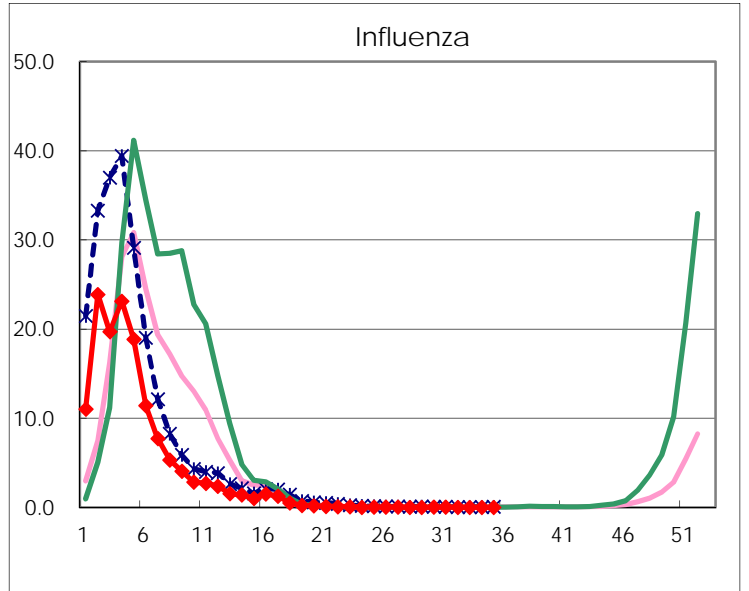
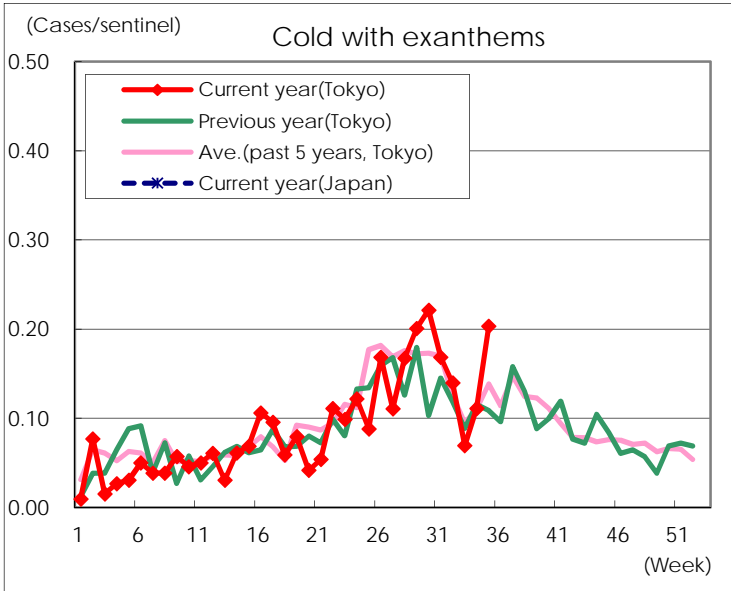
Diseases	Tokyo				
	32nd	33rd	34th	35th	/sentinel
Respiratory syncytial virus infection	58	35	68	106	0.41
Pharyngoconjunctival fever	131	102	120	96	0.38
Group A streptococcal pharyngitis	367	215	236	288	1.13
Infectious gastroenteritis	924	580	788	839	3.28
Chickenpox	92	48	55	56	0.22
Hand, foot, and mouth disease	2,960	1,535	1,260	1,404	5.48
Erythema infectiosum	165	71	111	107	0.42
Exanthem subitum	166	119	123	178	0.70
Pertussis	6	1	2	3	0.01
Herpangina	647	342	282	319	1.25
Mumps	92	62	90	106	0.41
Kawasaki disease	8	1	2	3	0.01
Cold with exanthems	36	16	27	52	0.20
Influenza	3	4	4	2	
Acute hemorrhagic conjunctivitis	1				
Epidemic keratoconjunctivitis	28	21	42	26	0.67
Bacterial meningitis	2			2	0.08
Aseptic meningitis	1	1	2	1	0.04
Mycoplasma pneumonia	9	21	26	14	0.56
Chlamydial pneumonia (excluding psittacosis)	1	1	1	3	0.12
Infectious gastroenteritis (only by Rotavirus)					
Influenza-Associated Hospitalizations		1	2		

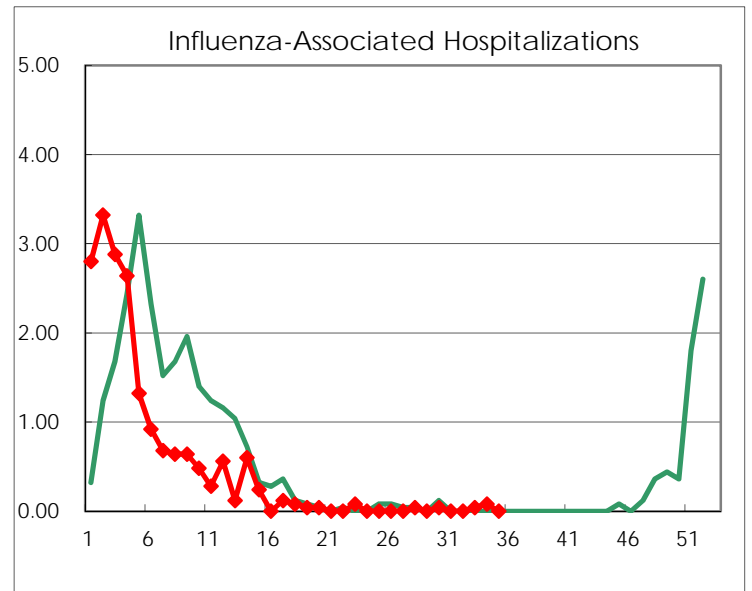
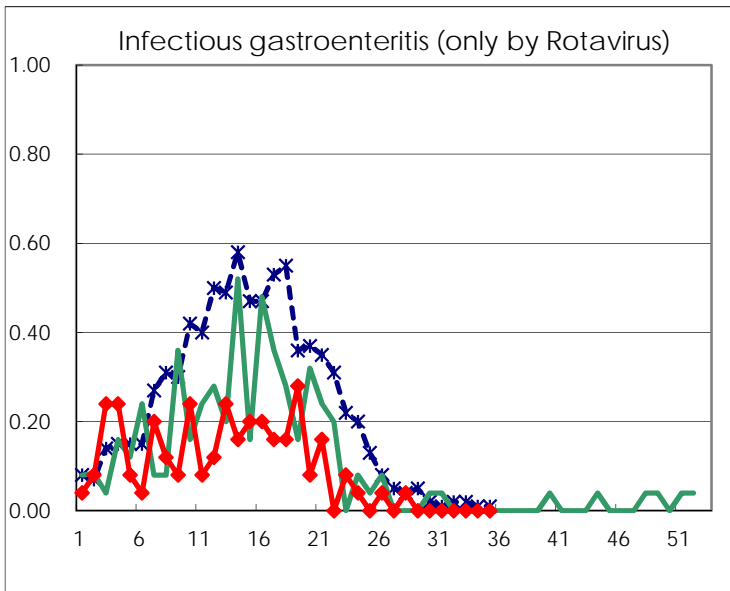
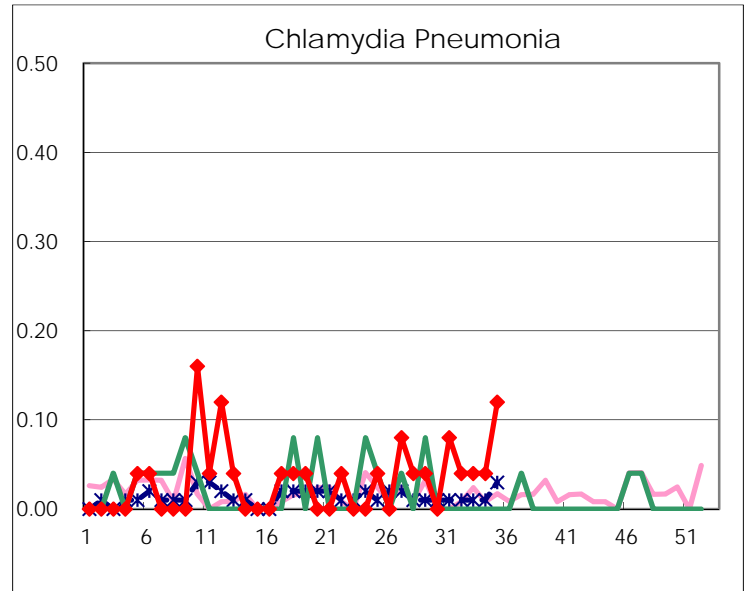
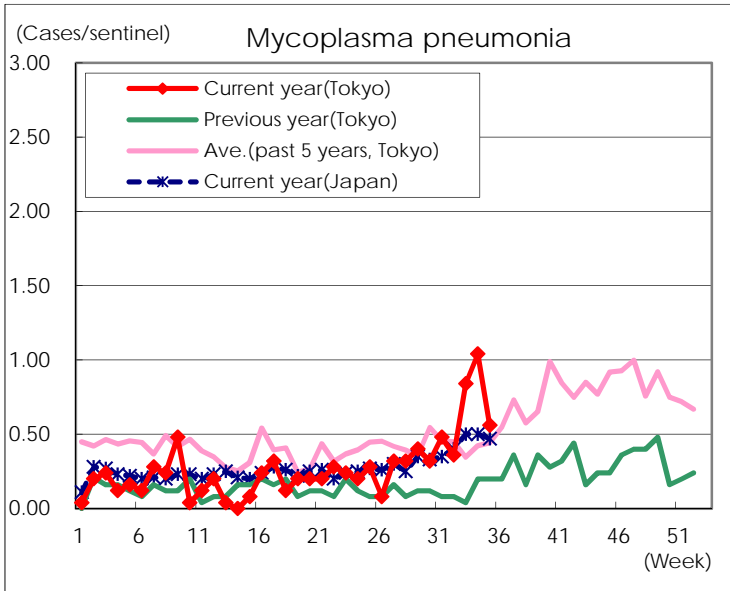
( Blank means 0. )

# Disease Trend Graph (weekly reported cases per sentinel in comparison)









Number of sentinel facilities for weekly reporting		
Types of sentinels	Number of sentinels	Sentinels having reported
Pediatric	264	256
Influenza	419	407
Ophthalmic	39	39
Specially-designated	25	25