

## 10 September 2015 / Number 36

### Surveillance System in Tokyo, Japan

The infectious diseases which all physicians must report

All physicians must report to health centers the incidence of the diseases which are shown at page one. Health centers electronically report the individual cases to Tokyo Metropolitan Infectious Disease Surveillance Center.

The infectious diseases required to be reported by the sentinels

The numbers of patients who visit the sentinel clinics or hospitals during a week are reported to health centers in Tokyo. And they electronically report the numbers to Tokyo Metropolitan Infectious Disease Surveillance Center. We have about 500 sentinel clinics and hospitals in Tokyo.

Tokyo Metropolitan Institute of Public Health

TEL:81-3-3363-3213 FAX:81-3-5332-7365

e-mail:[www@tokyo-eiken.go.jp](mailto:www@tokyo-eiken.go.jp)

URL:[idsc.tokyo-eiken.go.jp/](http://idsc.tokyo-eiken.go.jp/)

---

Number of patients with the diseases which all physicians must report

Category	Diseases	Tokyo					Japan	
		33rd	34th	35th	36th	Cum 2015	36th	Cum 2015
I	Ebola hemorrhagic fever							
	Crimean-Congo hemorrhagic fever							
	Smallpox							
	South American hemorrhagic fever							
	Plague							
	Marburg disease							
	Lassa fever							
II	Acute poliomyelitis							
	Tuberculosis	58	68	64	50	2,497	395	16,514
	Diphtheria							
	Severe Acute Respiratory Syndrome(SARS)							
	Middle East Respiratory Syndrome (MERS)							
	Avian influenza H5N1							
	Avian influenza H7N9							
III	Cholera							3
	Shigellosis		2	1		43	2	107
	Enterohemorrhagic Escherichia coli infection	19	15	19	11	265	174	2,610
	Typhoid fever					8		22
	Paratyphoid fever				1	6	1	24
IV	Hepatitis E					19	3	134
	West Nile fever							
	Hepatitis A		1			30	1	178
	Echinococcosis					1		9
	Yellow fever							
	Psittacosis							5
	Omsk hemorrhagic fever							
	Relapsing fever							3
	Kyasanur forest disease							
	Q fever							
	Rabies							
	Coccidioidomycosis					1		2
	Monkeypox							
	Severe Fever with Thrombocytopenia Syndrome						1	44
	Hemorrhagic fever with renal syndrome							
	Western equine encephalitis							
	Tick-borne encephalitis							
	Anthrax							
	Chikungunya fever					6	2	13
	Scrub typhus(Tsutsugamushi disease)		2			4	2	79
	Dengue fever	3	5	6	4	57	14	190
	Eastern equine encephalitis							
	Avian influenza (excluding H5N1 and H7N9)							
	Nipah virus infection							
	Japanese spotted fever				1	1	5	111
	Japanese encephalitis							
	Hantavirus pulmonary syndrome							
	Herpes B virus infection							
	Glanders							
	Brucellosis					2		4
	Venezuelan equine encephalitis							
	Hendra virus infection							
Epidemic typhus								
Botulism								
Malaria		1		1	13	2	30	
Tularemia							2	
Lyme disease					1		7	
Lyssavirus infection(excluding rabies)								
Rift valley fever								
Melioidosis			1		1		1	
Legionellosis	3	5	4	6	89	45	1,020	
Leptospirosis					5		9	
Rocky mountain spotted fever								

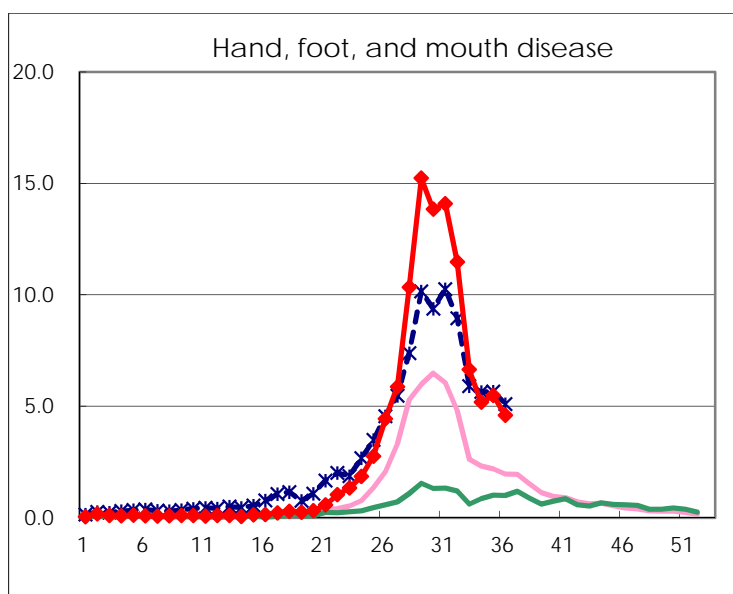
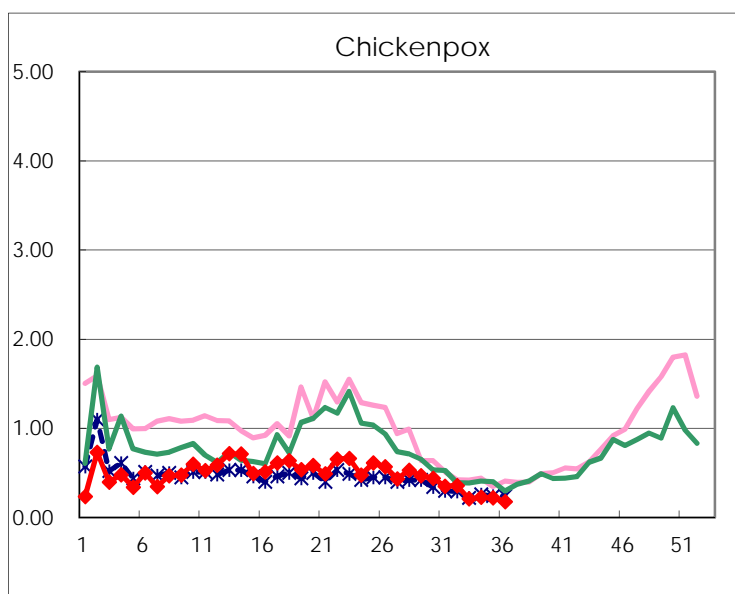
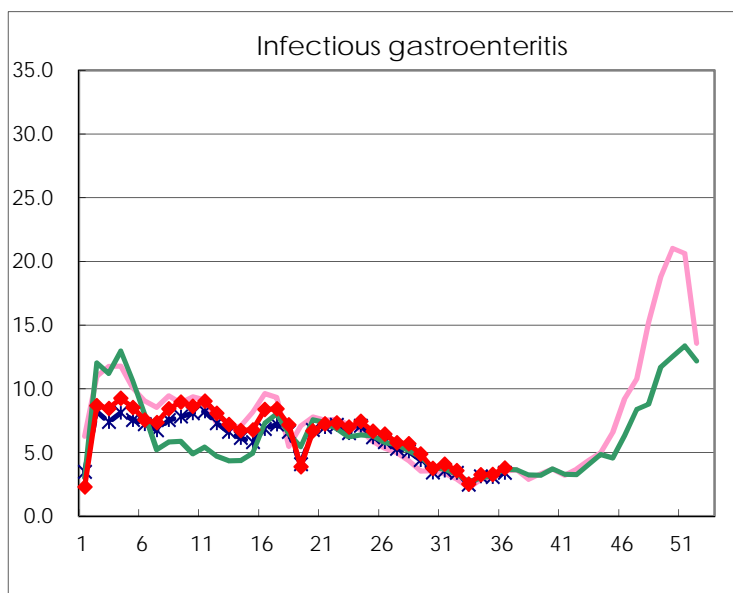
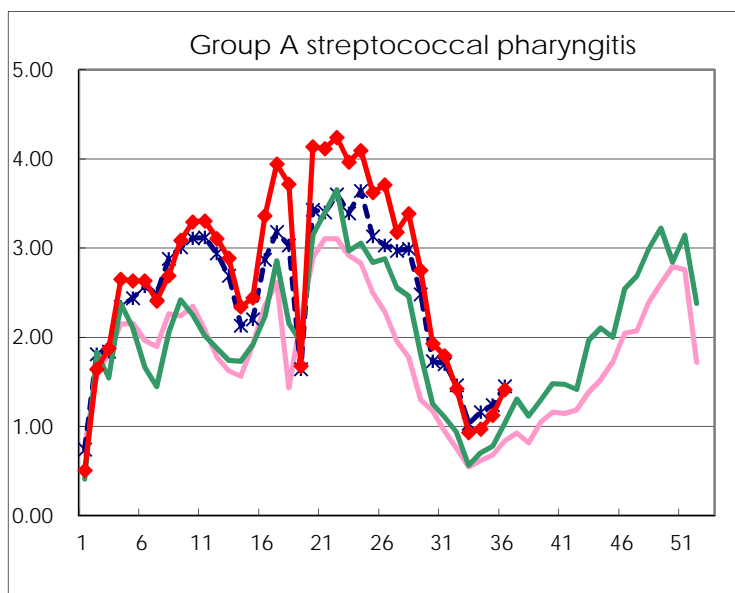
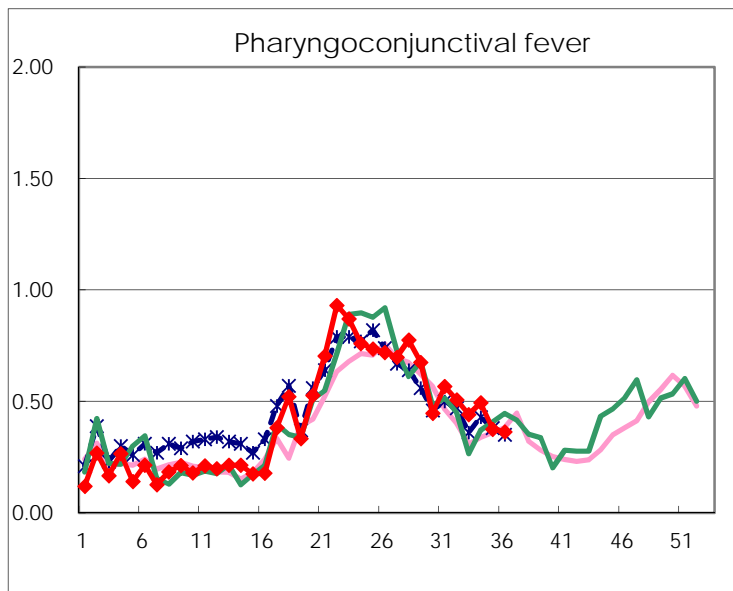
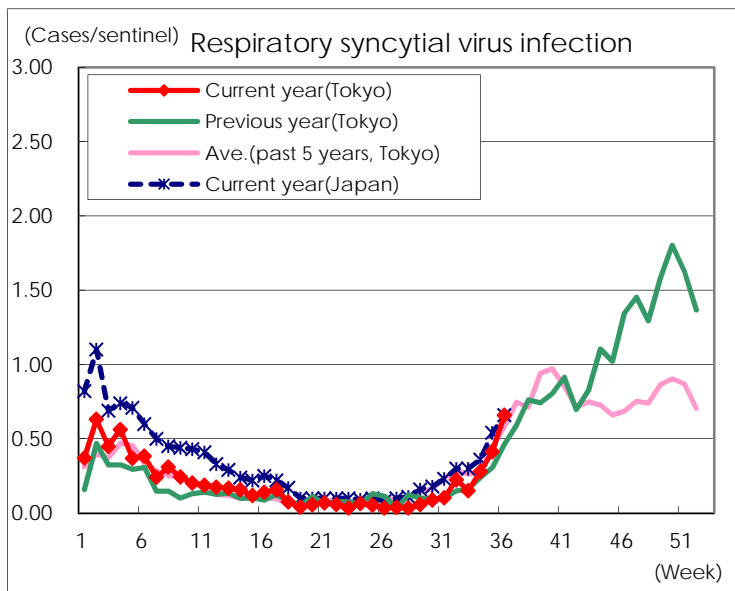
Category	Diseases	Tokyo					Japan	
		33rd	34th	35th	36th	Cum 2015	36th	Cum 2015
V	Amebiasis	5	3	3	3	136	21	774
	Viral hepatitis(excluding hepatitis A and E)	1	1	2		35	1	170
	CRE infection	12	12	8	12	158	32	1,051
	Acute encephalitis(excluding JE and WNE)	2		1		33	2	352
	Cryptosporidiosis					3	1	10
	Creutzfeldt-Jakob disease	1				18	2	121
	Severe invasive streptococcal infections(TSLS)	2	1	1	1	48	1	302
	Acquired immunodeficiency syndrome (AIDS)	7	11	10	7	290	15	965
	Giardiasis		1			14		51
	Invasive <i>Haemophilus influenzae</i> disease		1			17	1	170
	Invasive meningococcal disease					7	1	24
	Invasive pneumococcal disease	1	1	2	2	217	12	1,592
	Varicella (limited to hospitalized case)		1			33	1	213
	Congenital rubella syndrome							
	Syphilis	22	23	22	24	666	39	1,646
	Disseminated cryptococcosis					8	2	80
	Tetanus					1	4	79
	Vancomycin-resistant <i>S. aureus</i> infection							
	Vancomycin-resistant Enterococcus infection					1	1	43
	Rubella	1				25	1	127
Measles					9		28	
MDRA infection	1				6		23	

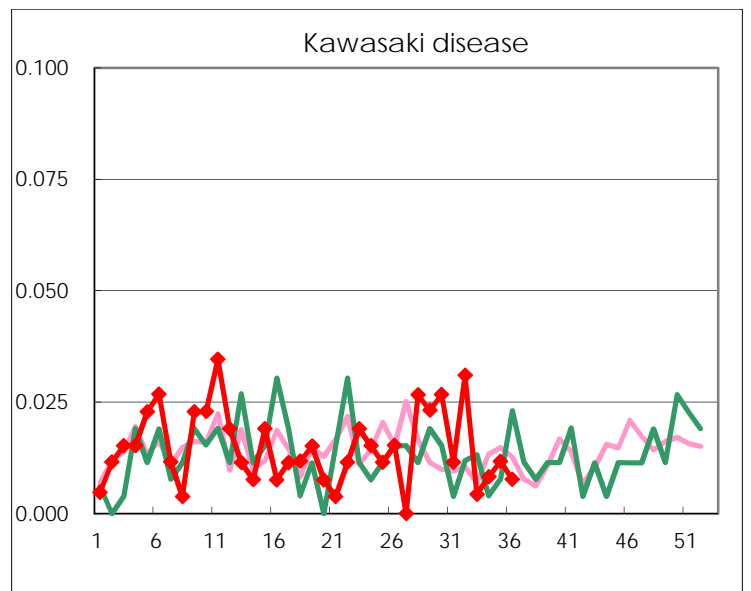
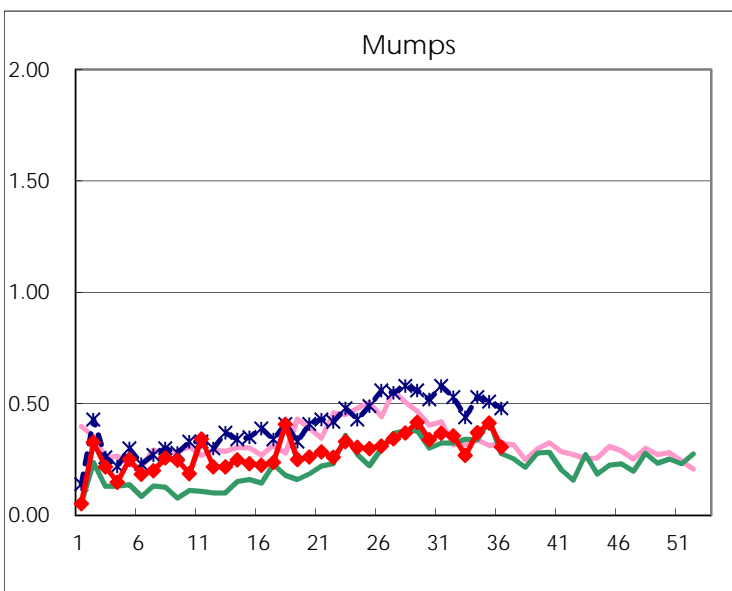
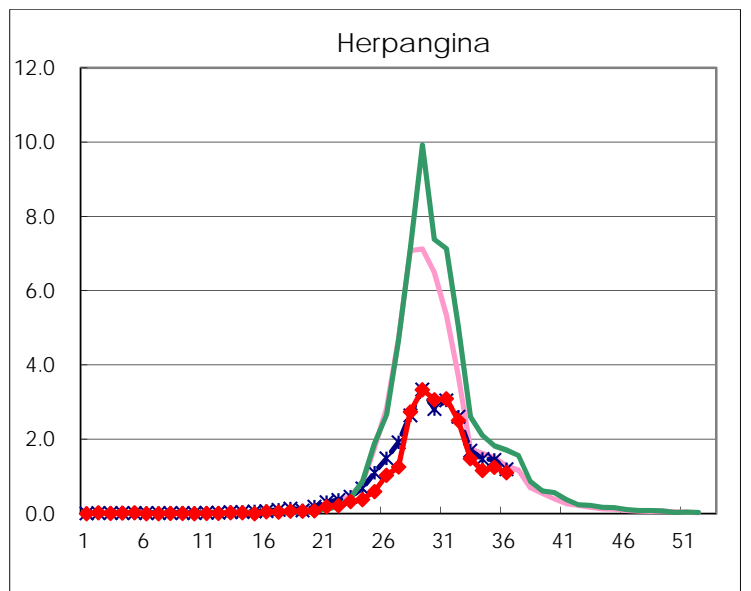
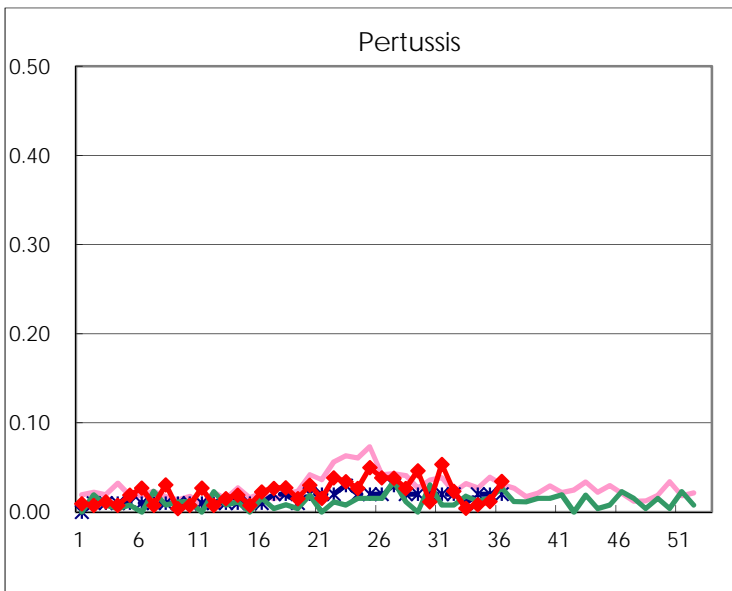
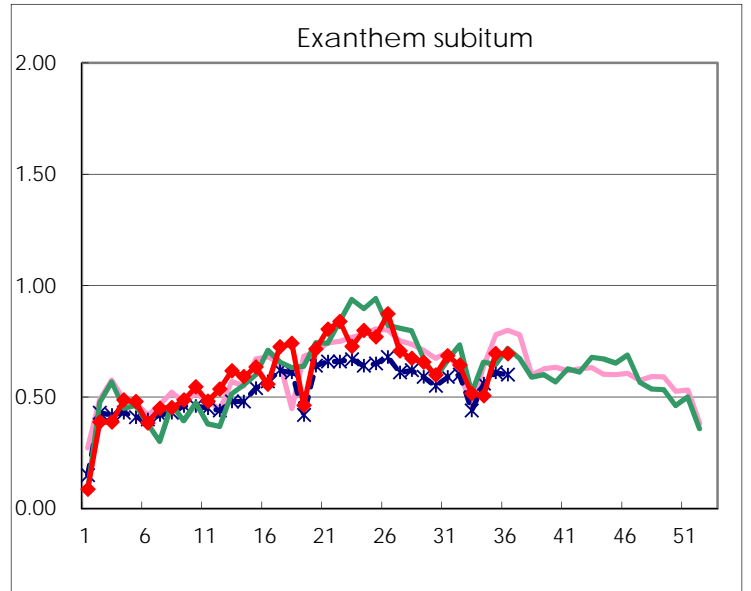
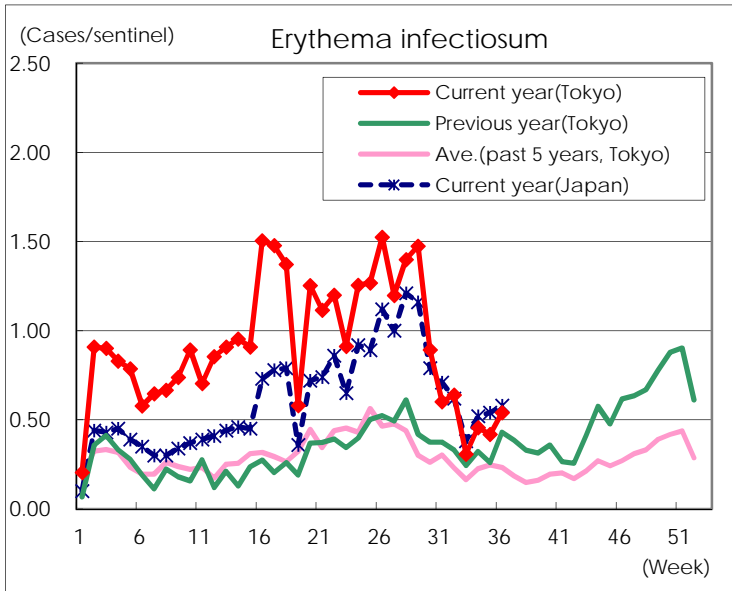
Number of patients with the diseases to be reported  
by the designated clinics and hospitals

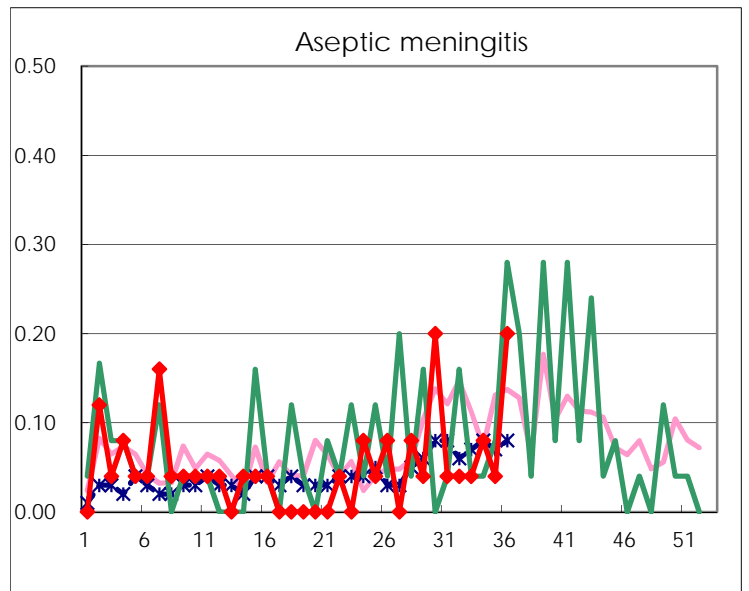
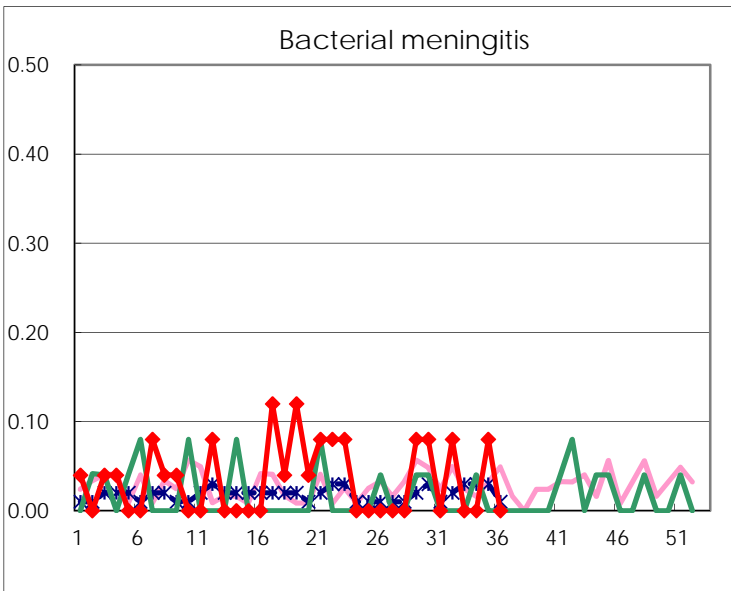
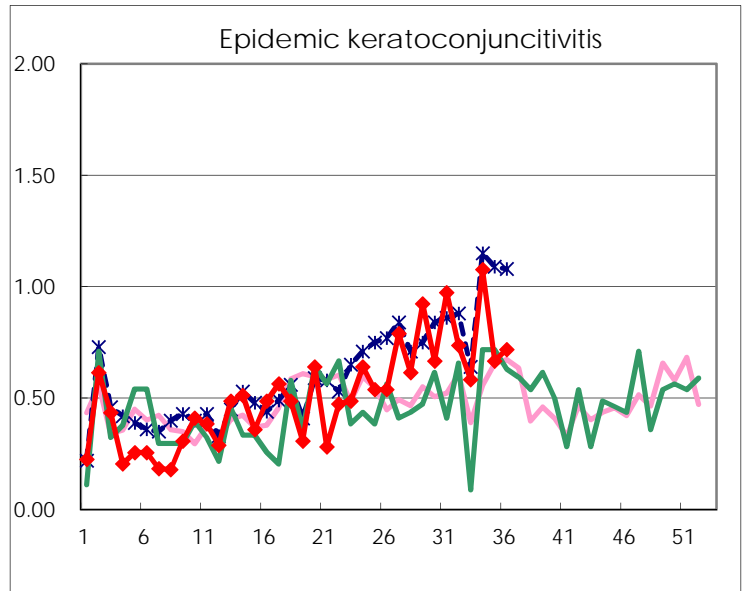
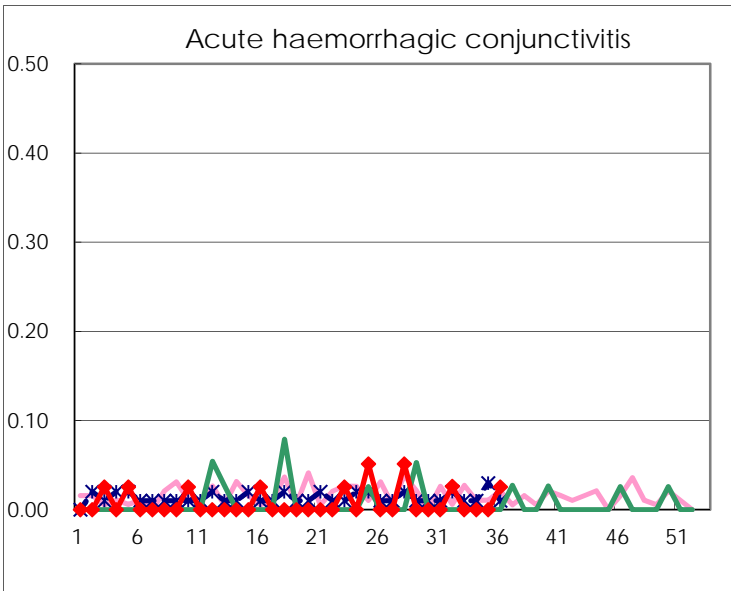
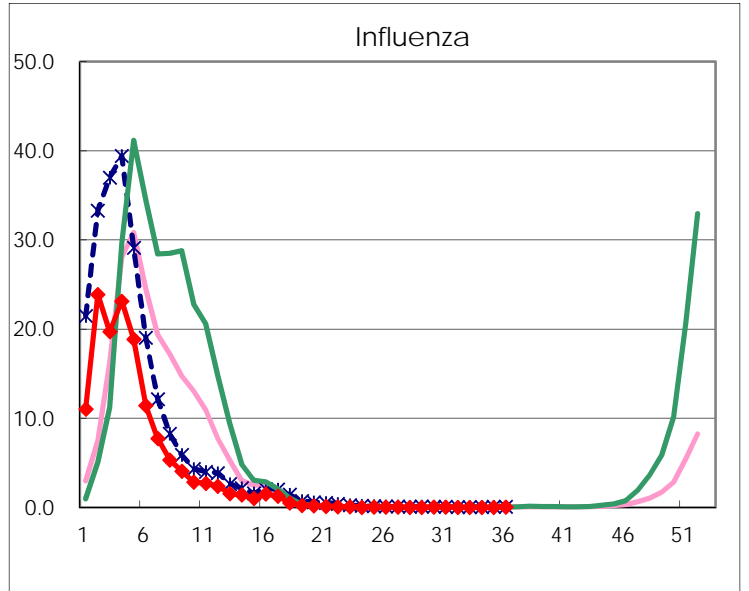
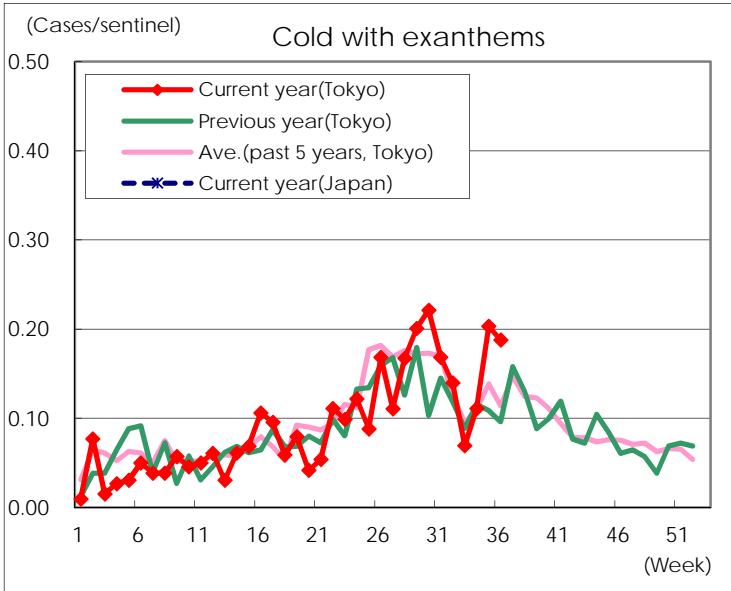
Diseases	Tokyo				
	33rd	34th	35th	36th	/sentinel
Respiratory syncytial virus infection	35	68	106	172	0.66
Pharyngoconjunctival fever	102	120	96	95	0.36
Group A streptococcal pharyngitis	215	236	288	368	1.41
Infectious gastroenteritis	580	788	839	982	3.76
Chickenpox	48	55	56	46	0.18
Hand, foot, and mouth disease	1,535	1,260	1,404	1,198	4.59
Erythema infectiosum	71	111	107	141	0.54
Exanthem subitum	119	123	178	181	0.69
Pertussis	1	2	3	9	0.03
Herpangina	342	282	319	289	1.11
Mumps	62	90	106	80	0.31
Kawasaki disease	1	2	3	2	0.01
Cold with exanthems	16	27	52	49	0.19
Influenza	4	4	2	20	0.05
Acute hemorrhagic conjunctivitis				1	0.03
Epidemic keratoconjunctivitis	21	42	26	28	0.72
Bacterial meningitis			2		
Aseptic meningitis	1	2	1	5	0.20
Mycoplasma pneumonia	21	26	14	11	0.44
Chlamydial pneumonia (excluding psittacosis)	1	1	3	6	0.24
Infectious gastroenteritis (only by Rotavirus)					
Influenza-Associated Hospitalizations	1	2			

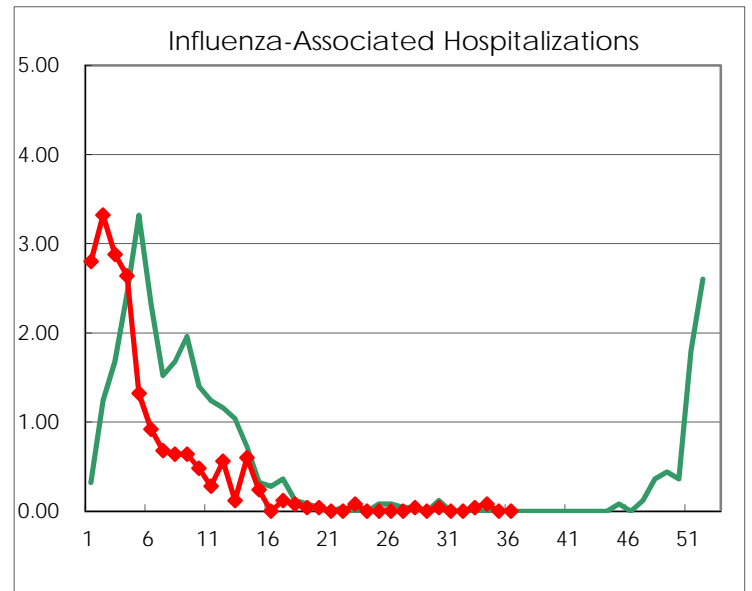
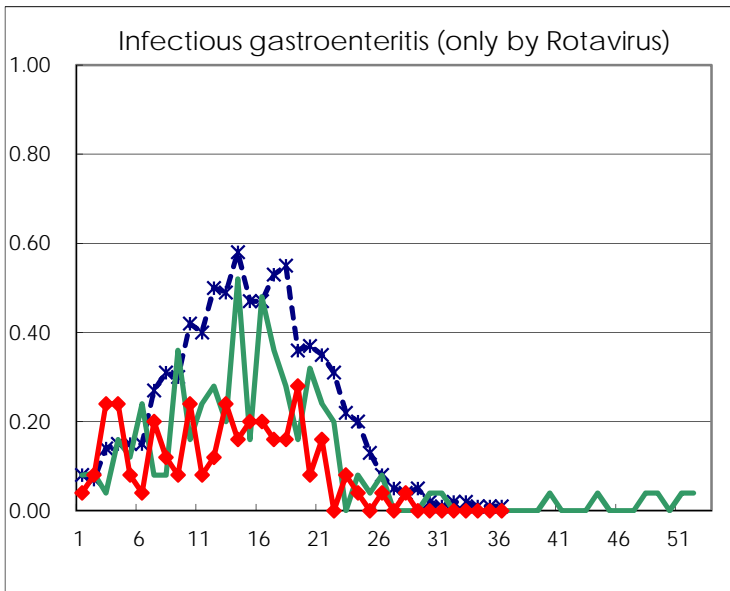
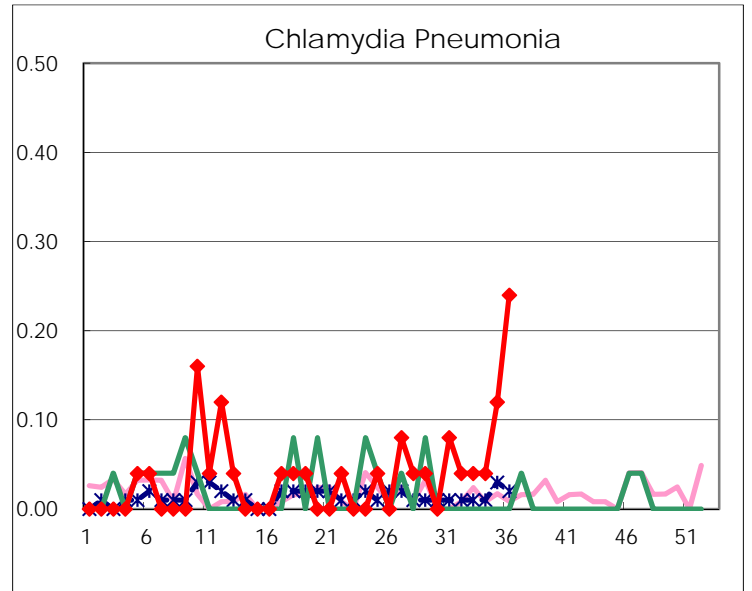
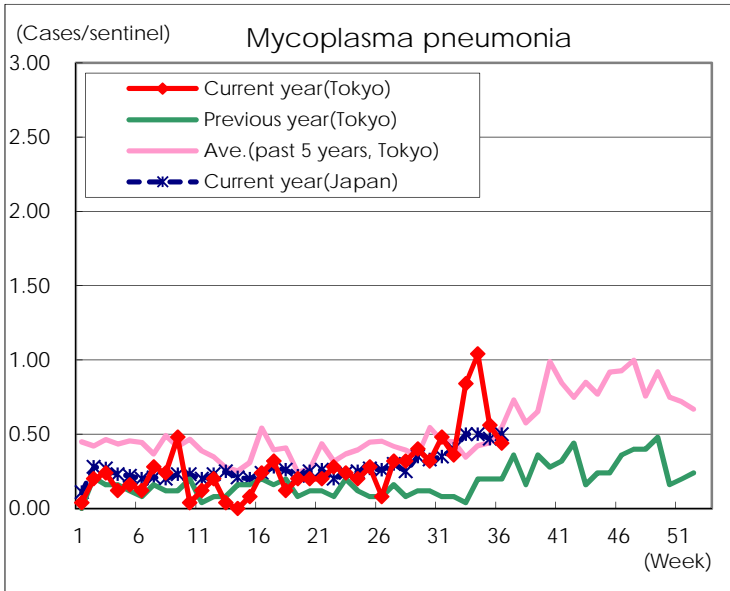
( Blank means 0. )

# Disease Trend Graph (weekly reported cases per sentinel in comparison)









Number of sentinel facilities for weekly reporting		
Types of sentinels	Number of sentinels	Sentinels having reported
Pediatric	264	261
Influenza	419	414
Ophthalmic	39	39
Specially-designated	25	25