

**17 September 2015 / Number 37**

## Surveillance System in Tokyo, Japan

The infectious diseases which all physicians must report

All physicians must report to health centers the incidence of the diseases which are shown at page one. Health centers electronically report the individual cases to Tokyo Metropolitan Infectious Disease Surveillance Center.

The infectious diseases required to be reported by the sentinels

The numbers of patients who visit the sentinel clinics or hospitals during a week are reported to health centers in Tokyo. And they electronically report the numbers to Tokyo Metropolitan Infectious Disease Surveillance Center. We have about 500 sentinel clinics and hospitals in Tokyo.

Tokyo Metropolitan Institute of Public Health

TEL:81-3-3363-3213 FAX:81-3-5332-7365

e-mail:[www@tokyo-eiken.go.jp](mailto:www@tokyo-eiken.go.jp)

URL:[idsc.tokyo-eiken.go.jp/](http://idsc.tokyo-eiken.go.jp/)

---

Number of patients with the diseases which all physicians must report

Category	Diseases	Tokyo					Japan	
		34th	35th	36th	37th	Cum 2015	37th	Cum 2015
I	Ebola hemorrhagic fever							
	Crimean-Congo hemorrhagic fever							
	Smallpox							
	South American hemorrhagic fever							
	Plague							
	Marburg disease							
II	Lassa fever							
	Acute poliomyelitis							
	Tuberculosis	68	67	56	59	2,565	370	17,038
	Diphtheria							
	Severe Acute Respiratory Syndrome(SARS)							
	Middle East Respiratory Syndrome (MERS)							
III	Avian influenza H5N1							
	Avian influenza H7N9							
	Cholera							3
	Shigellosis	2	1		1	44	3	110
	Enterohemorrhagic Escherichia coli infection	15	20	11	7	273	131	2,758
IV	Typhoid fever					8		22
	Paratyphoid fever			1		6		24
	Hepatitis E					19	2	137
	West Nile fever							
	Hepatitis A	1			1	31		183
	Echinococcosis					1		9
	Yellow fever							
	Psittacosis							5
	Omsk hemorrhagic fever							
	Relapsing fever							3
	Kyasanur forest disease							
	Q fever							
	Rabies							
	Coccidioidomycosis					1		2
	Monkeypox							
	Severe Fever with Thrombocytopenia Syndrome						1	45
	Hemorrhagic fever with renal syndrome							
	Western equine encephalitis							
	Tick-borne encephalitis							
	Anthrax							
	Chikungunya fever					6		13
	Scrub typhus(Tsutsugamushi disease)	2				4	1	81
	Dengue fever	5	6	4	4	61	9	200
	Eastern equine encephalitis							
	Avian influenza (excluding H5N1 and H7N9)							
	Nipah virus infection							
	Japanese spotted fever			1		1	5	119
	Japanese encephalitis						1	1
	Hantavirus pulmonary syndrome							
	Herpes B virus infection							
	Glanders							
	Brucellosis					2		4
Venezuelan equine encephalitis								
Hendra virus infection								
Epidemic typhus								
Botulism								
Malaria	1		1		13	3	33	
Tularemia							2	
Lyme disease					1		7	
Lyssavirus infection(excluding rabies)								
Rift valley fever								
Melioidosis		1			1		1	
Legionellosis	5	4	7	3	93	54	1,079	
Leptospirosis				1	6	1	11	
Rocky mountain spotted fever								

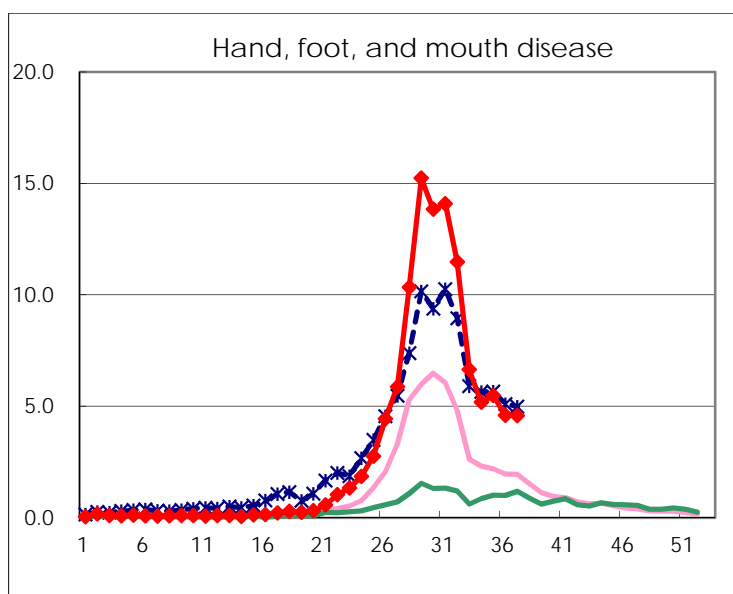
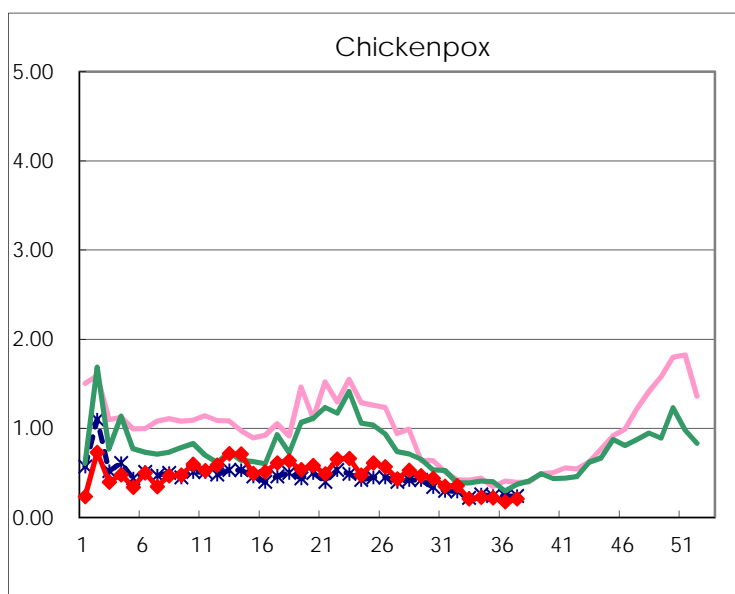
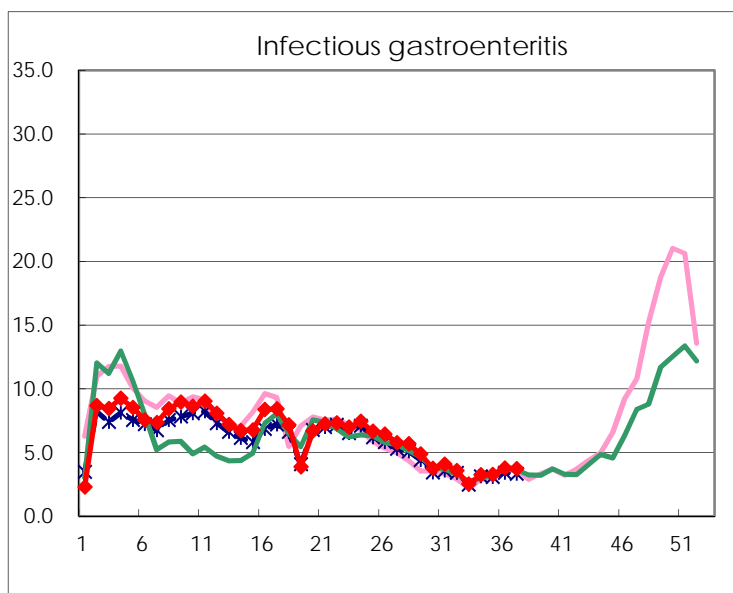
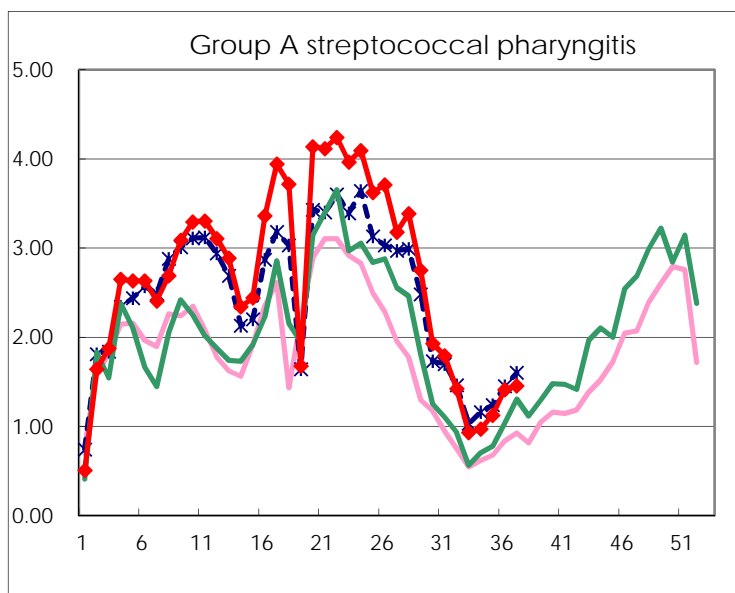
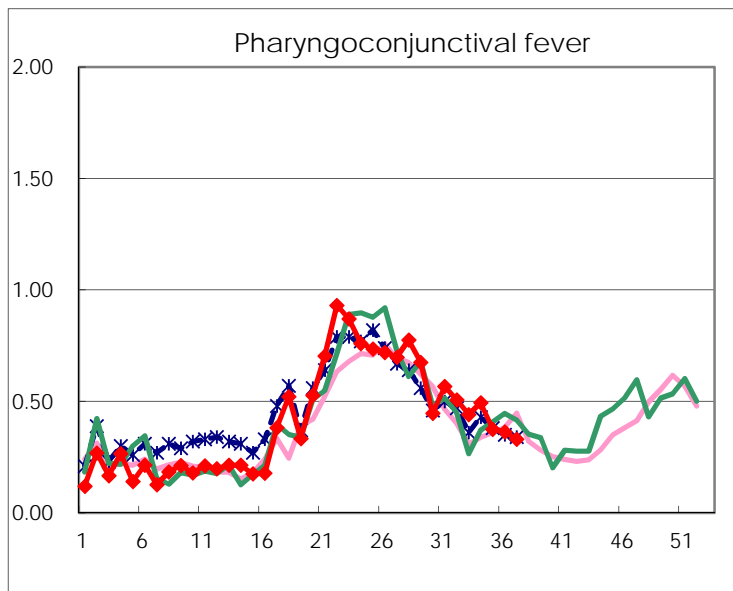
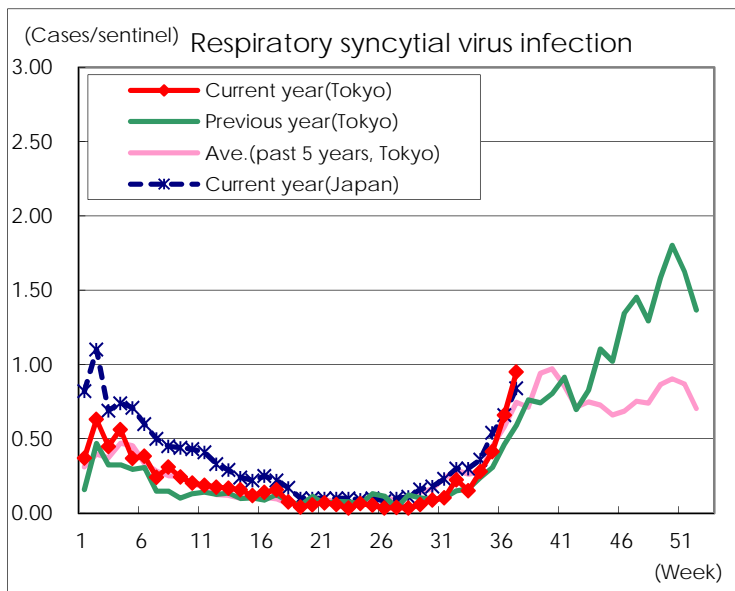
Category	Diseases	Tokyo					Japan	
		34th	35th	36th	37th	Cum 2015	37th	Cum 2015
V	Amebiasis	3	3	3	2	138	9	795
	Viral hepatitis(excluding hepatitis A and E)	1	2		1	36	2	174
	CRE infection	12	8	12	10	168	32	1,106
	Acute encephalitis(excluding JE and WNE)		1		1	34	3	358
	Cryptosporidiosis					3	1	11
	Creutzfeldt-Jakob disease					18	2	127
	Severe invasive streptococcal infections(TSLS)	1	1	1	1	49	7	310
	Acquired immunodeficiency syndrome (AIDS)	11	10	7	9	299	17	992
	Giardiasis	1				14		51
	Invasive <i>Haemophilus influenzae</i> disease	1			1	18	4	175
	Invasive meningococcal disease					7		24
	Invasive pneumococcal disease	1	2	2	1	218	12	1,606
	Varicella (limited to hospitalized case)	1				33	4	216
	Congenital rubella syndrome							
	Syphilis	24	22	24	24	691	46	1,701
	Disseminated cryptococcosis					8	2	86
	Tetanus					1	2	81
	Vancomycin-resistant <i>S. aureus</i> infection							
	Vancomycin-resistant Enterococcus infection				1	2	3	46
	Rubella					25	2	129
Measles					9	1	29	
MDRA infection					6		23	

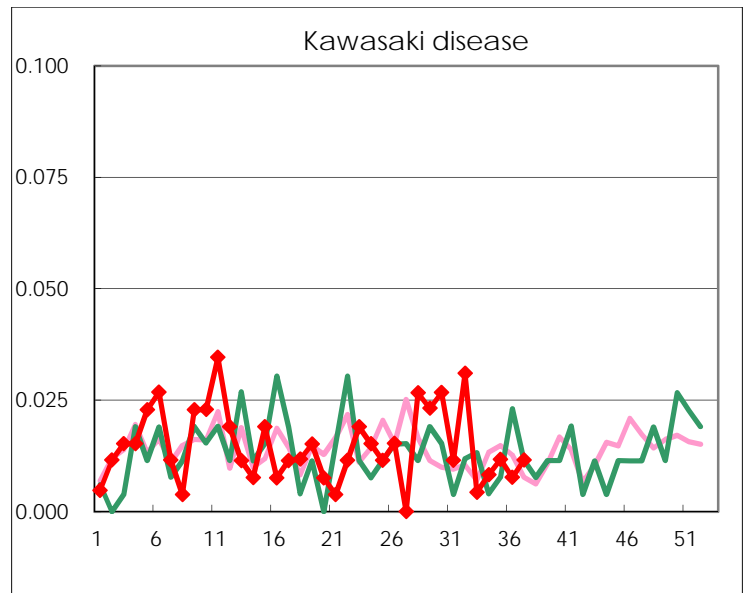
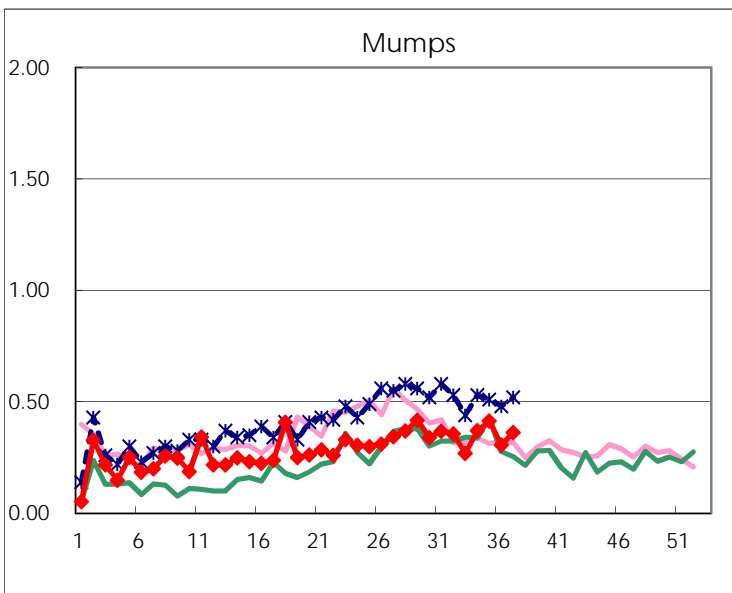
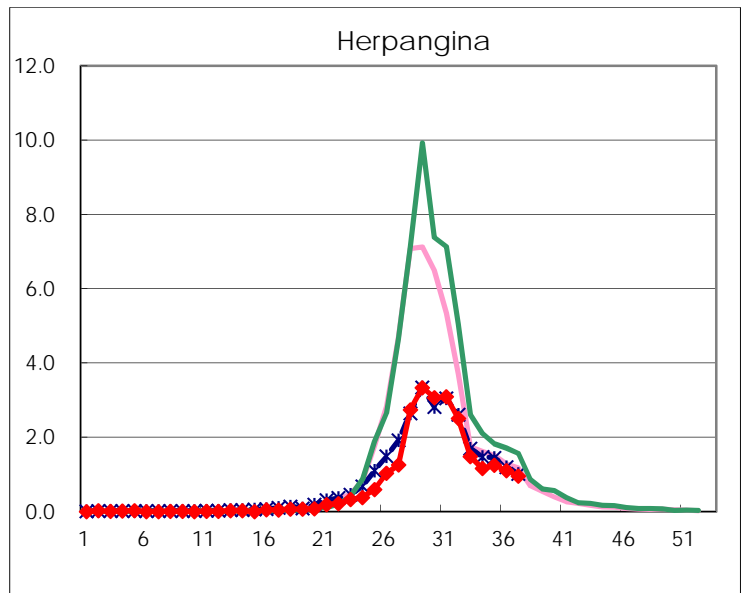
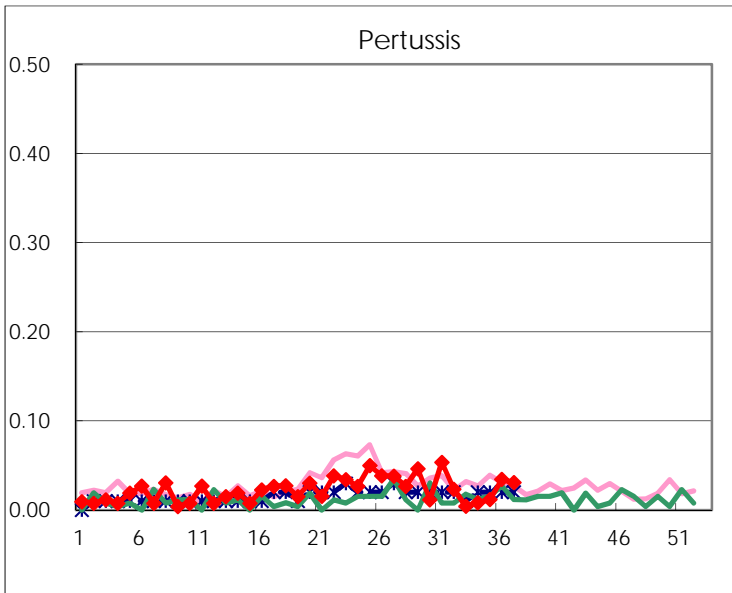
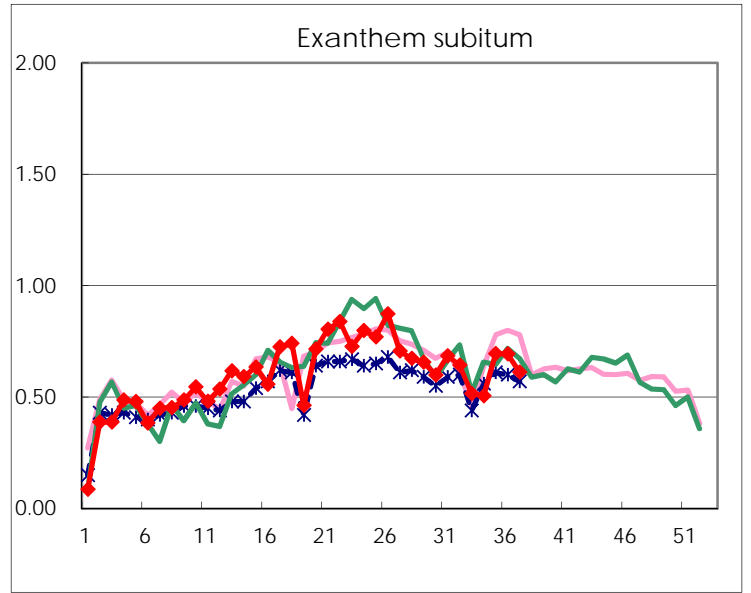
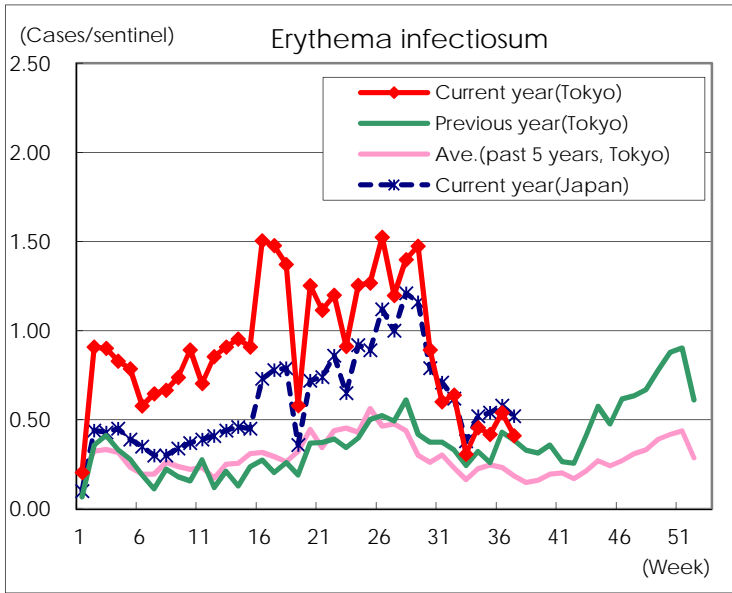
Number of patients with the diseases to be reported  
by the designated clinics and hospitals

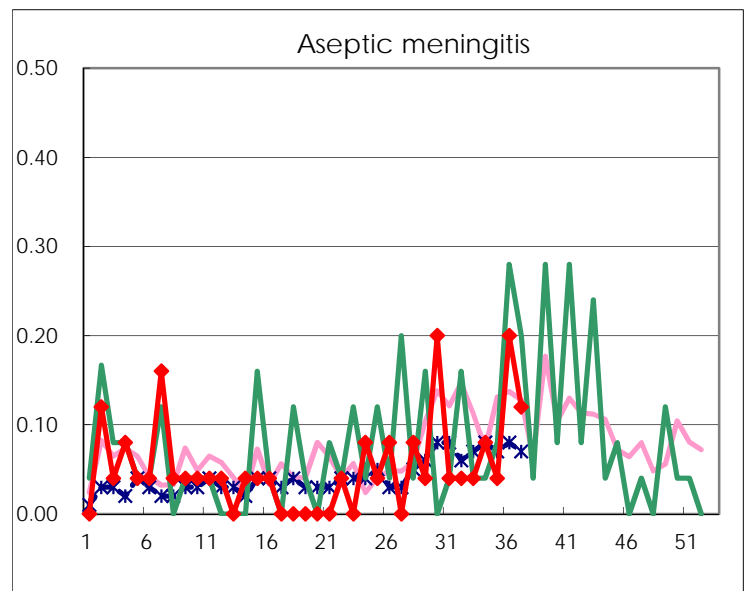
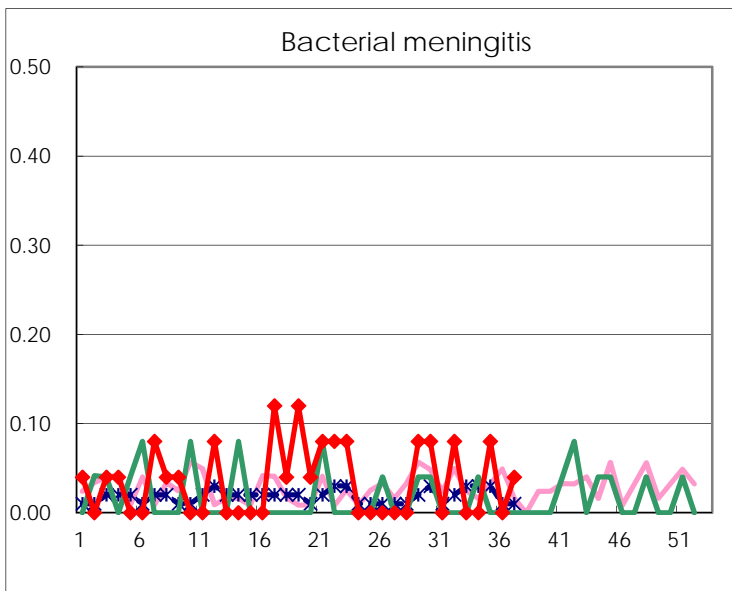
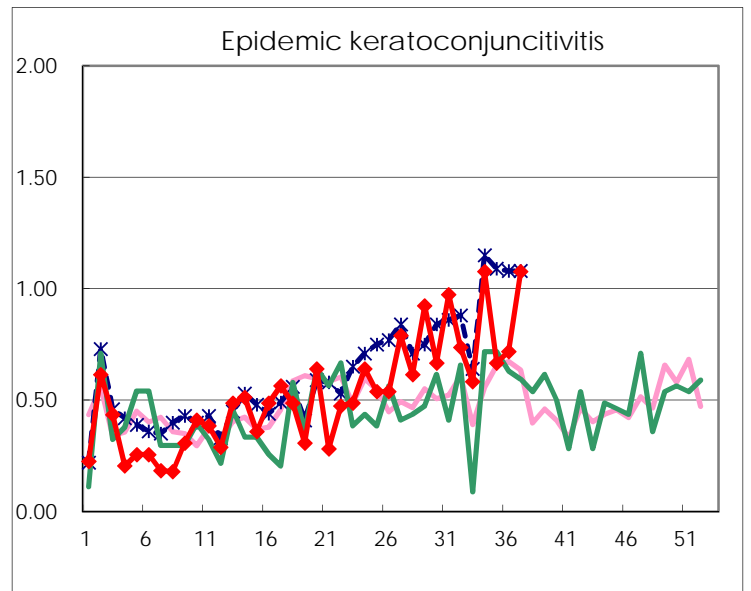
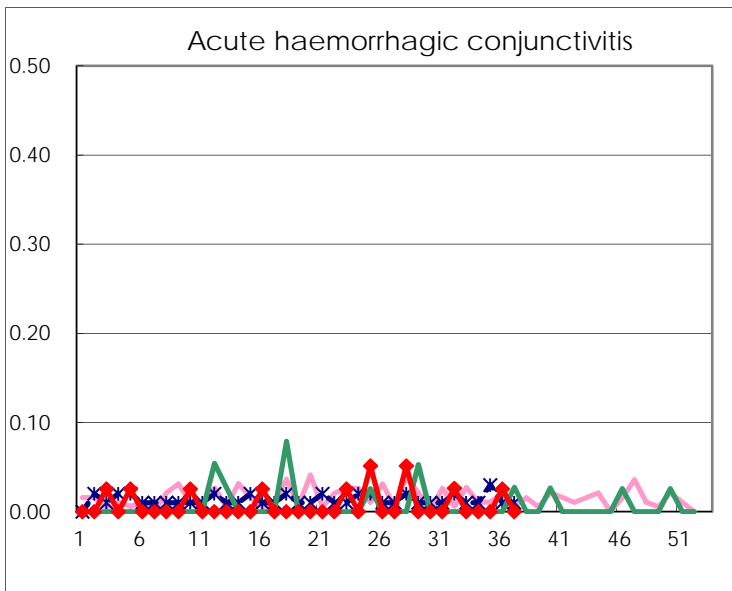
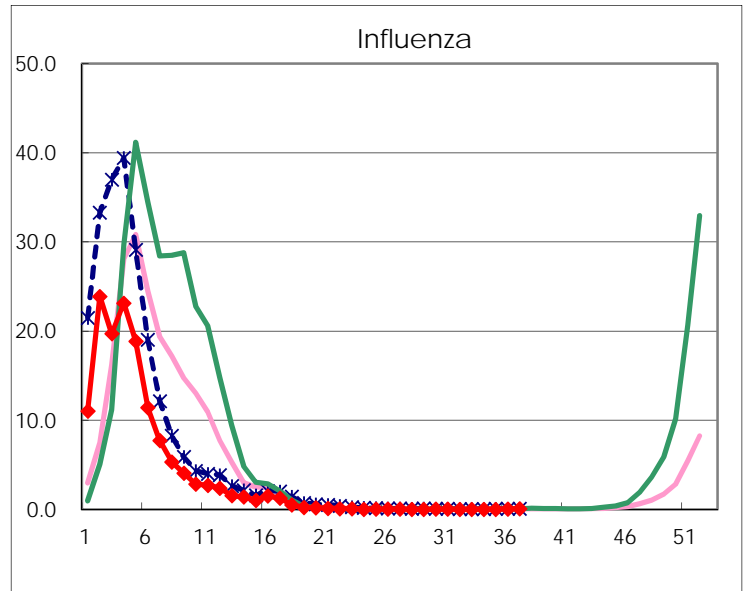
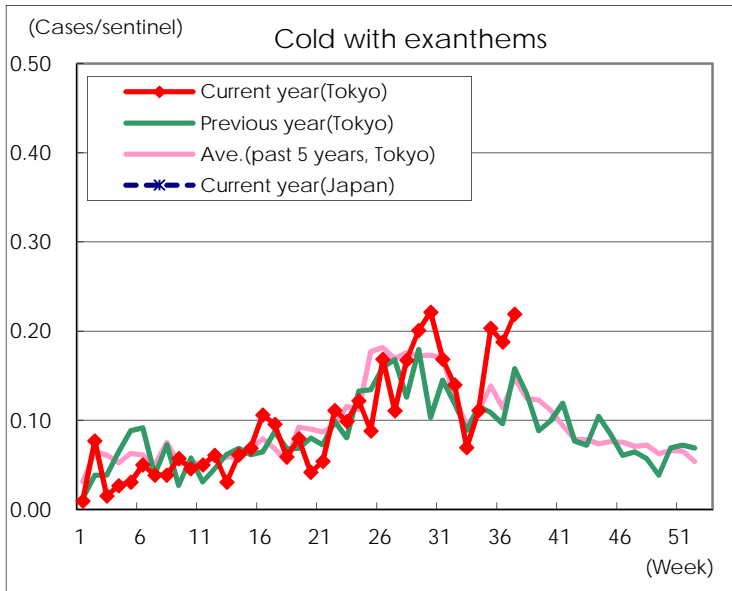
Diseases	Tokyo				
	34th	35th	36th	37th	/sentinel
Respiratory syncytial virus infection	68	106	172	247	0.95
Pharyngoconjunctival fever	120	96	95	86	0.33
Group A streptococcal pharyngitis	236	288	368	378	1.45
Infectious gastroenteritis	788	839	982	969	3.73
Chickenpox	55	56	46	54	0.21
Hand, foot, and mouth disease	1,260	1,404	1,198	1,193	4.59
Erythema infectiosum	111	107	141	107	0.41
Exanthem subitum	123	178	181	159	0.61
Pertussis	2	3	9	8	0.03
Herpangina	282	319	289	249	0.96
Mumps	90	106	80	94	0.36
Kawasaki disease	2	3	2	3	0.01
Cold with exanthems	27	52	49	57	0.22
Influenza	4	2	20	30	0.07
Acute hemorrhagic conjunctivitis			1		
Epidemic keratoconjunctivitis	42	26	28	42	1.08
Bacterial meningitis		2		1	0.04
Aseptic meningitis	2	1	5	3	0.12
Mycoplasma pneumonia	26	14	11	15	0.60
Chlamydial pneumonia (excluding psittacosis)	1	3	6		
Infectious gastroenteritis (only by Rotavirus)					
Influenza-Associated Hospitalizations	2				

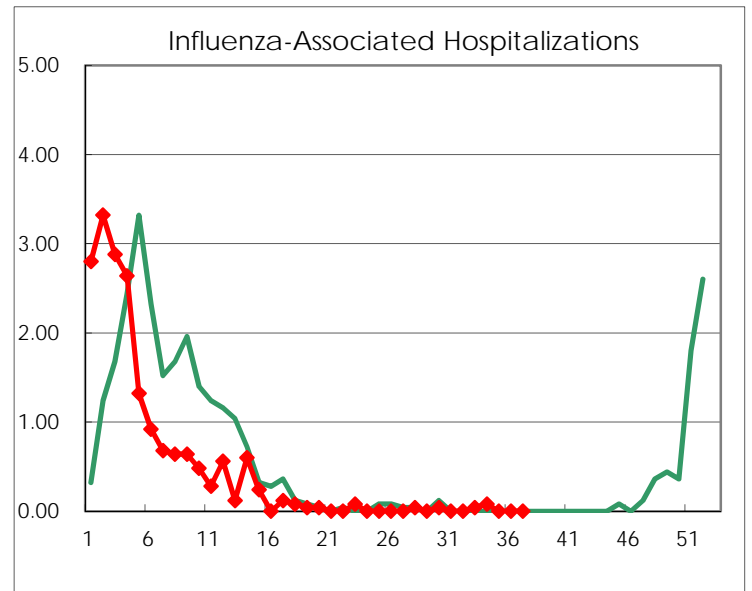
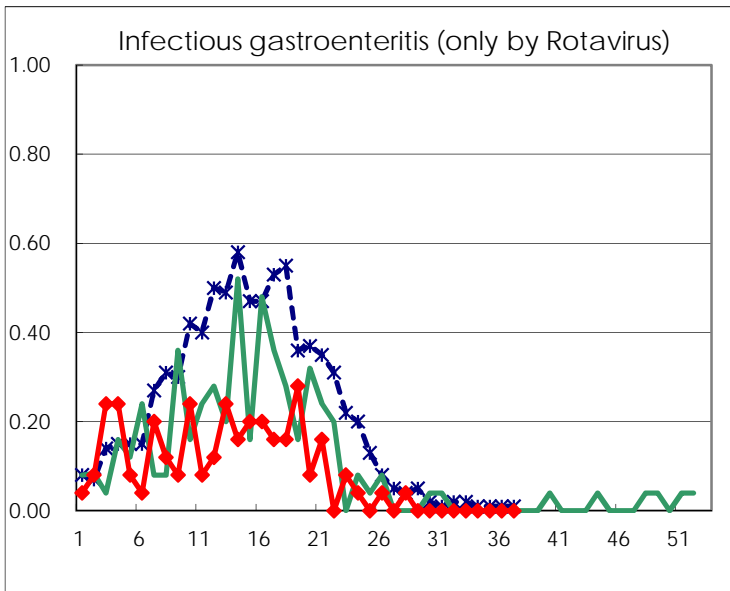
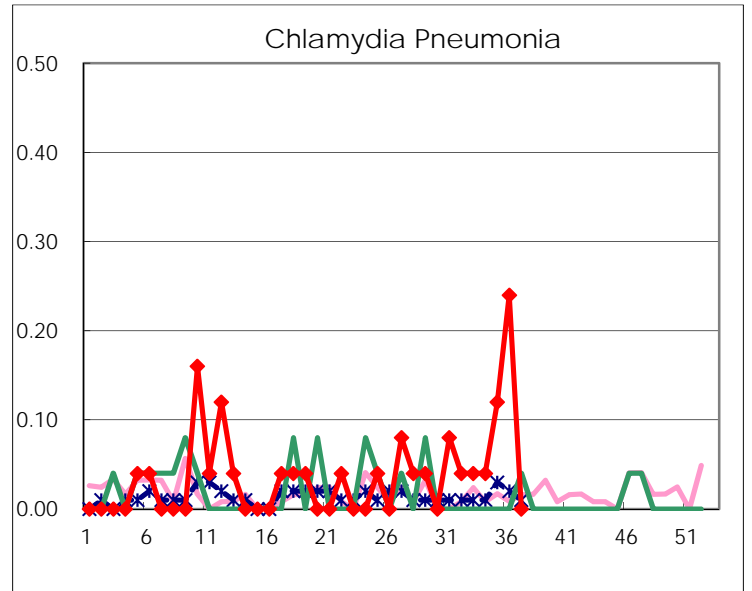
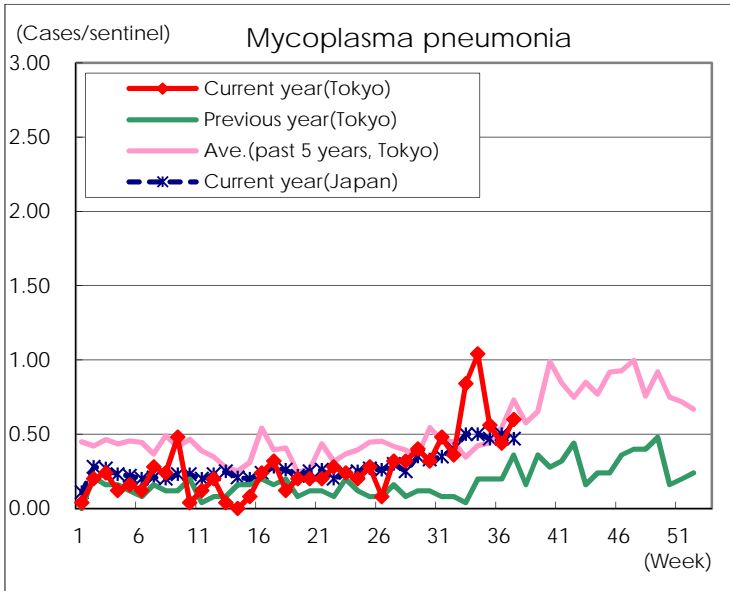
( Blank means 0. )

# Disease Trend Graph (weekly reported cases per sentinel in comparison)









Number of sentinel facilities for weekly reporting		
Types of sentinels	Number of sentinels	Sentinels having reported
Pediatric	264	260
Influenza	419	412
Ophthalmic	39	39
Specially-designated	25	25