

1 October 2015 / Number 39

Surveillance System in Tokyo, Japan

The infectious diseases which all physicians must report

All physicians must report to health centers the incidence of the diseases which are shown at page one. Health centers electronically report the individual cases to Tokyo Metropolitan Infectious Disease Surveillance Center.

The infectious diseases required to be reported by the sentinels

The numbers of patients who visit the sentinel clinics or hospitals during a week are reported to health centers in Tokyo. And they electronically report the numbers to Tokyo Metropolitan Infectious Disease Surveillance Center. We have about 500 sentinel clinics and hospitals in Tokyo.

Tokyo Metropolitan Institute of Public Health

TEL:81-3-3363-3213 FAX:81-3-5332-7365

e-mail:www@tokyo-eiken.go.jp

URL:idsc.tokyo-eiken.go.jp/

Number of patients with the diseases which all physicians must report

Category	Diseases	Tokyo					Japan	
		36th	37th	38th	39th	Cum 2015	39th	Cum 2015
I	Ebola hemorrhagic fever							
	Crimean-Congo hemorrhagic fever							
	Smallpox							
	South American hemorrhagic fever							
	Plague							
	Marburg disease							
	Lassa fever							
II	Acute poliomyelitis							
	Tuberculosis	60	62	88	32	2,698	140	17,759
	Diphtheria							
	Severe Acute Respiratory Syndrome(SARS)							
	Middle East Respiratory Syndrome (MERS)							
	Avian influenza H5N1							
	Avian influenza H7N9							
III	Cholera							3
	Shigellosis		2		1	46	3	119
	Enterohemorrhagic Escherichia coli infection	11	7	12	7	292	96	3,006
	Typhoid fever					8	1	23
	Paratyphoid fever	1			1	7		25
IV	Hepatitis E					19	1	143
	West Nile fever							
	Hepatitis A		1	2	2	35	4	191
	Echinococcosis					1		9
	Yellow fever							
	Psittacosis							5
	Omsk hemorrhagic fever							
	Relapsing fever							3
	Kyasanur forest disease							
	Q fever							
	Rabies							
	Coccidioidomycosis					1		2
	Monkeypox							
	Severe Fever with Thrombocytopenia Syndrome							49
	Hemorrhagic fever with renal syndrome							
	Western equine encephalitis							
	Tick-borne encephalitis							
	Anthrax							
	Chikungunya fever					6	1	14
	Scrub typhus(Tsutsugamushi disease)					4	1	82
	Dengue fever	4	4	5	2	68	7	218
	Eastern equine encephalitis							
	Avian influenza (excluding H5N1 and H7N9)							
	Nipah virus infection							
	Japanese spotted fever	1				1	1	132
	Japanese encephalitis							1
	Hantavirus pulmonary syndrome							
	Herpes B virus infection							
	Glanders							
	Brucellosis					2		4
	Venezuelan equine encephalitis							
	Hendra virus infection							
Epidemic typhus								
Botulism								
Malaria	1			1	14		33	
Tularemia							2	
Lyme disease					1		7	
Lyssavirus infection(excluding rabies)								
Rift valley fever								
Melioidosis					1		1	
Legionellosis	7	3	3	7	103	39	1,181	
Leptospirosis		1			6		13	
Rocky mountain spotted fever								

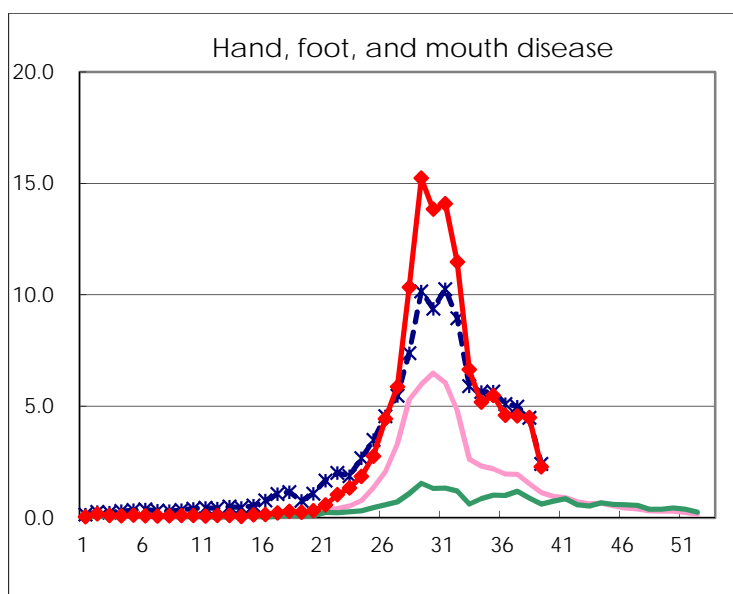
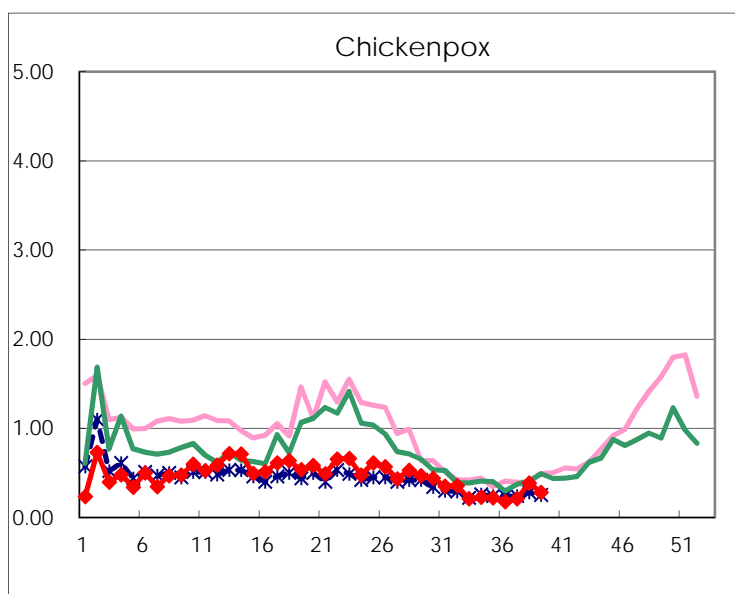
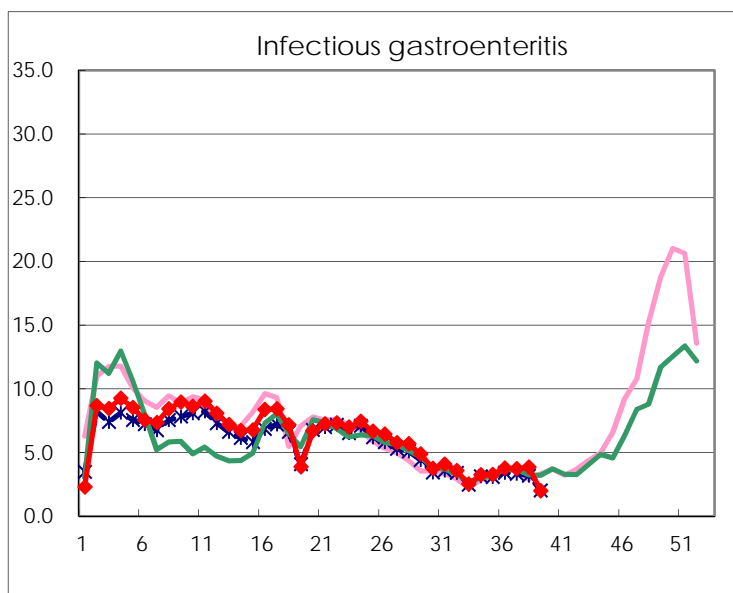
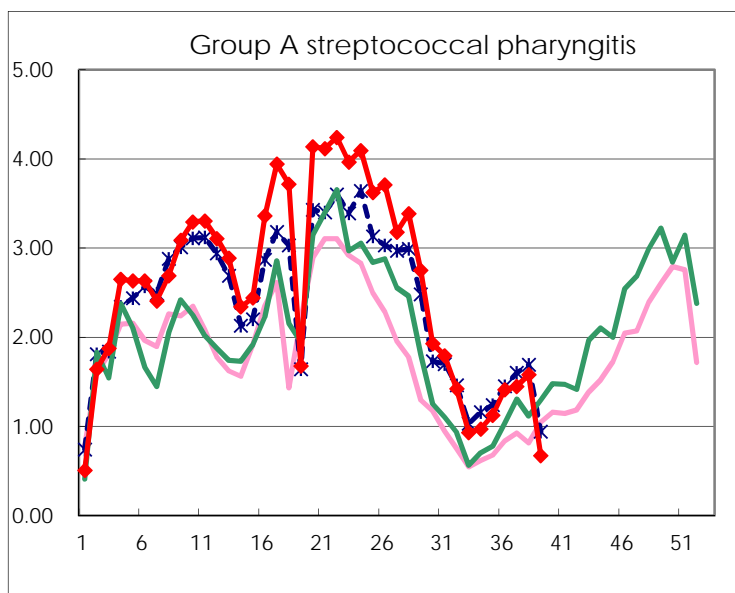
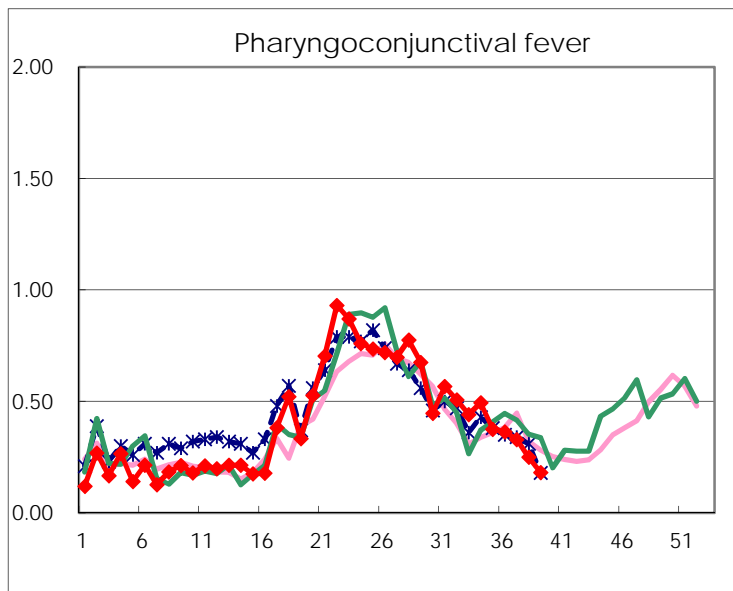
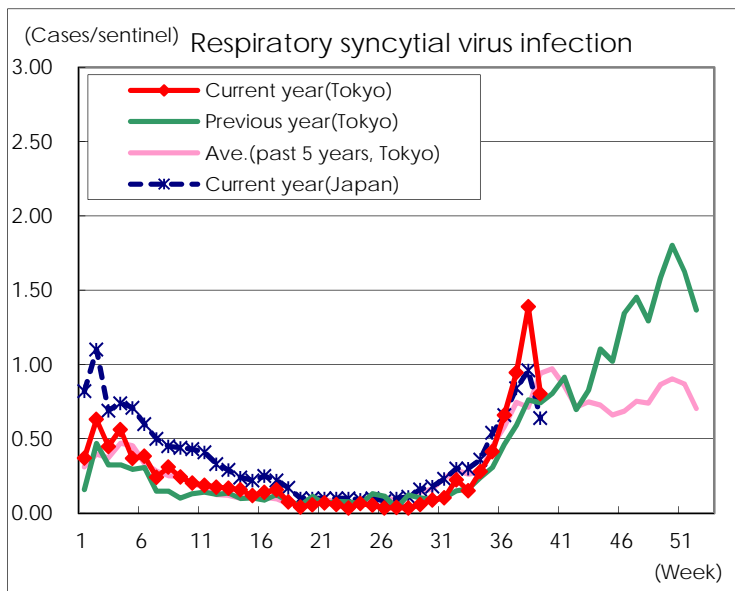
Category	Diseases	Tokyo					Japan	
		36th	37th	38th	39th	Cum 2015	39th	Cum 2015
V	Amebiasis	3	2	4	3	145	1	822
	Viral hepatitis(excluding hepatitis A and E)		1	1		37		180
	CRE infection	12	10	5	1	174	10	1,179
	Acute encephalitis(excluding JE and WNE)		1		1	35	4	370
	Cryptosporidiosis					3		11
	Creutzfeldt-Jakob disease			1		19	2	136
	Severe invasive streptococcal infections(TSLS)	1	1			49	2	322
	Acquired immunodeficiency syndrome (AIDS)	7	9	12	3	314	3	1,028
	Giardiasis			1	1	16	1	59
	Invasive <i>Haemophilus influenzae</i> disease		1		1	19	1	178
	Invasive meningococcal disease					7		25
	Invasive pneumococcal disease	2	1	3	4	225	23	1,661
	Varicella (limited to hospitalized case)			5		39	2	227
	Congenital rubella syndrome							
	Syphilis	24	25	32	11	735	19	1,794
	Disseminated cryptococcosis					8	1	88
	Tetanus					1		85
	Vancomycin-resistant <i>S. aureus</i> infection							
	Vancomycin-resistant Enterococcus infection		1			2	1	48
	Rubella			1	1	27	2	133
Measles					9	1	29	
MDRA infection					6		24	

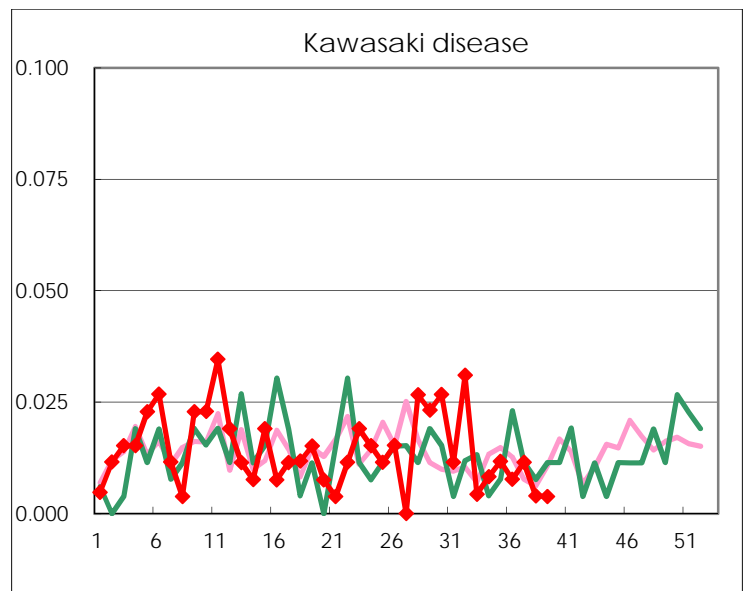
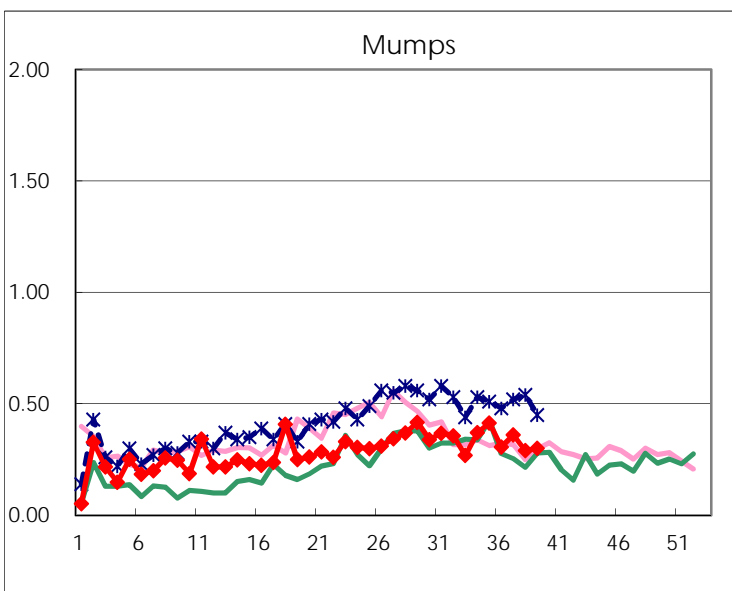
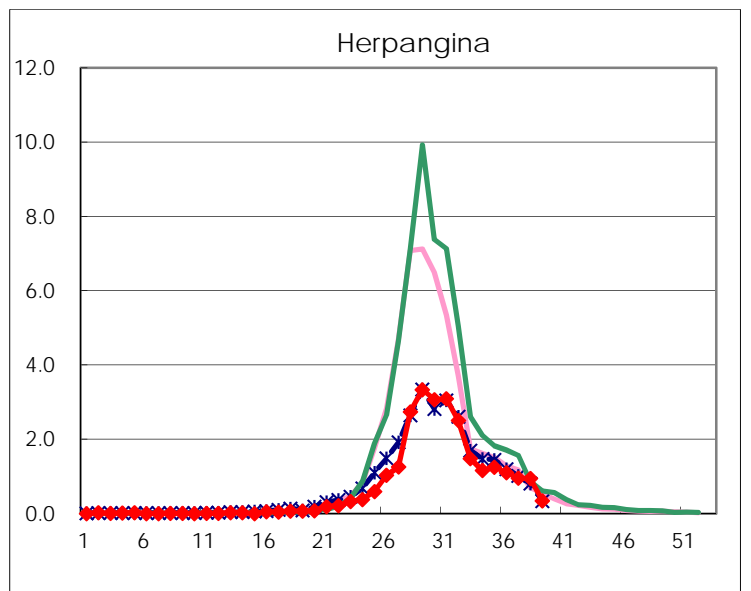
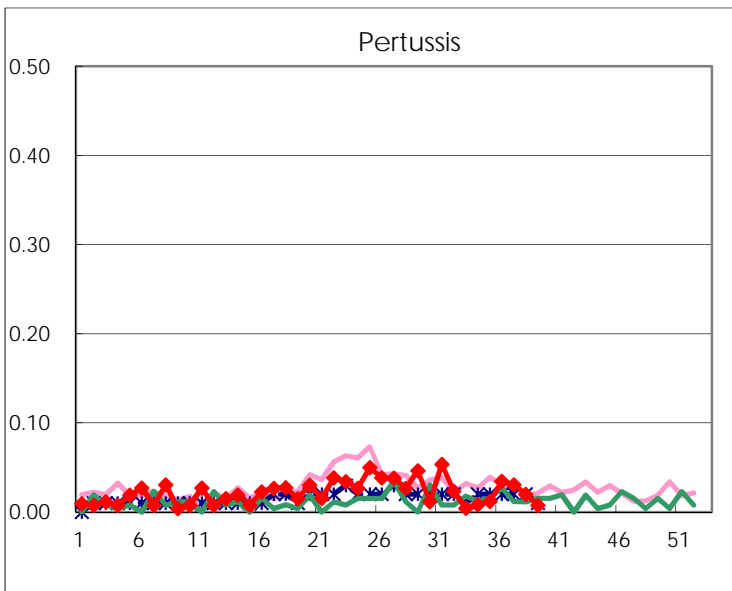
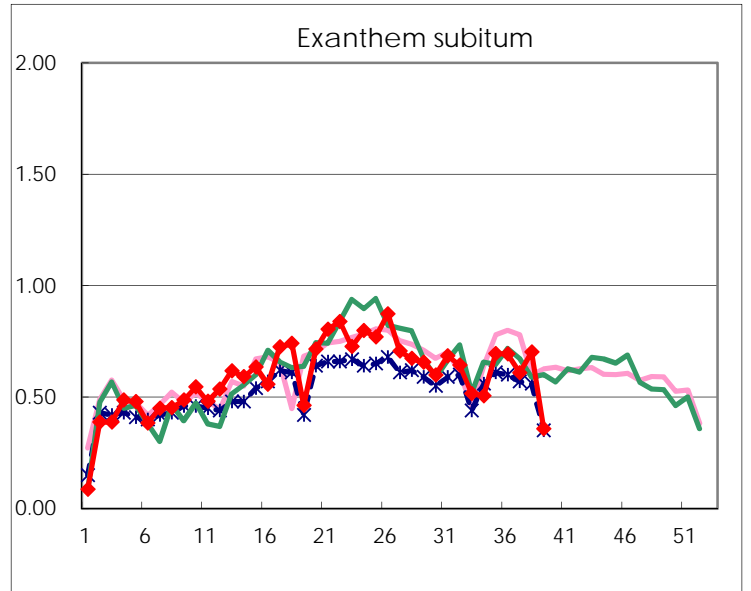
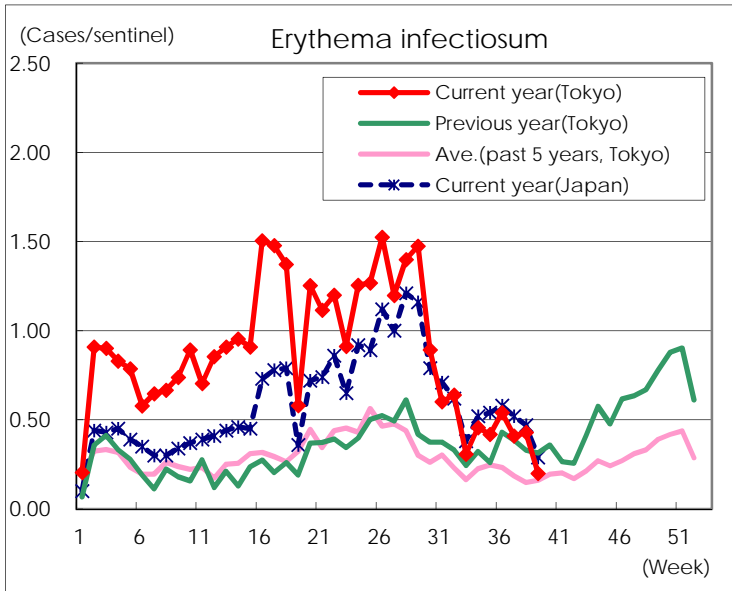
Number of patients with the diseases to be reported
by the designated clinics and hospitals

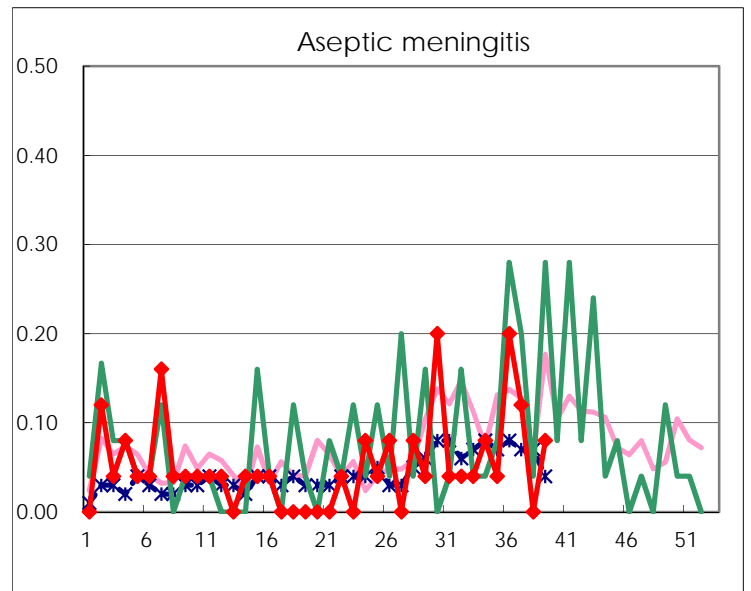
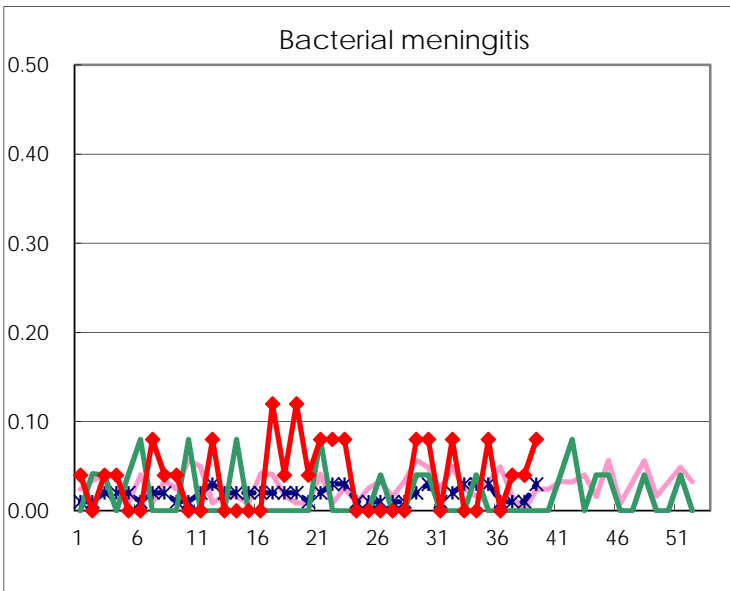
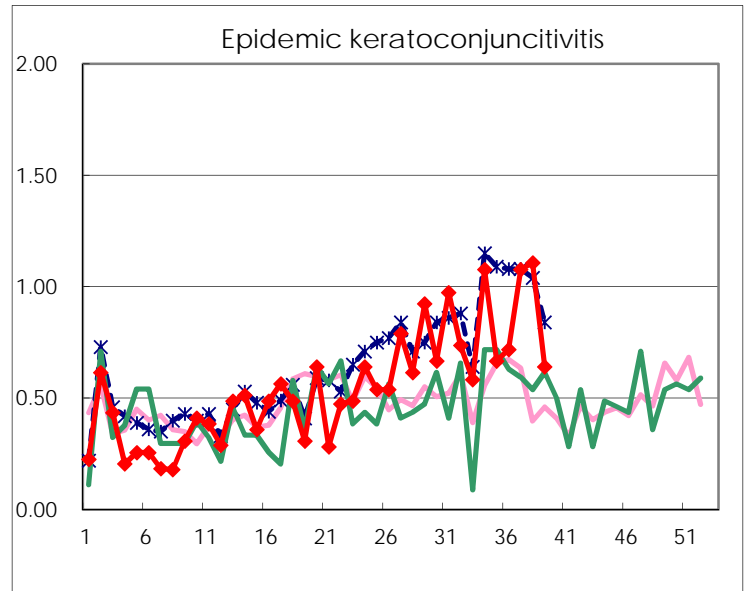
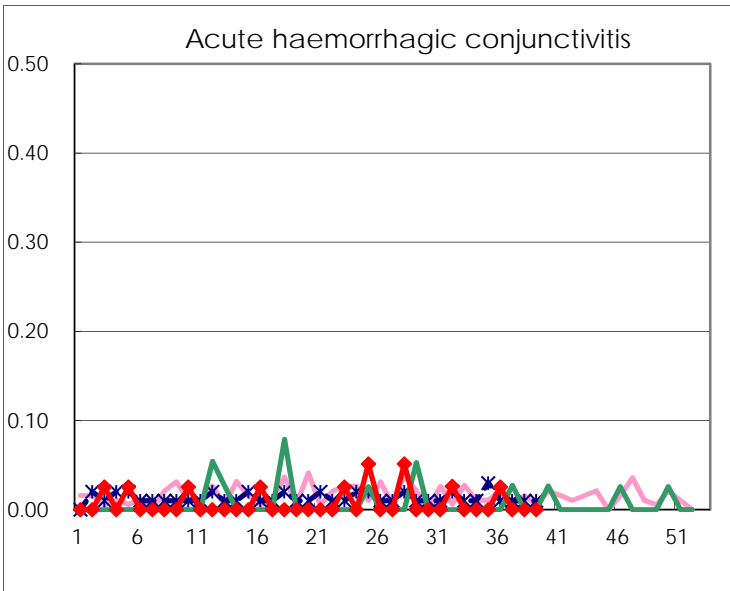
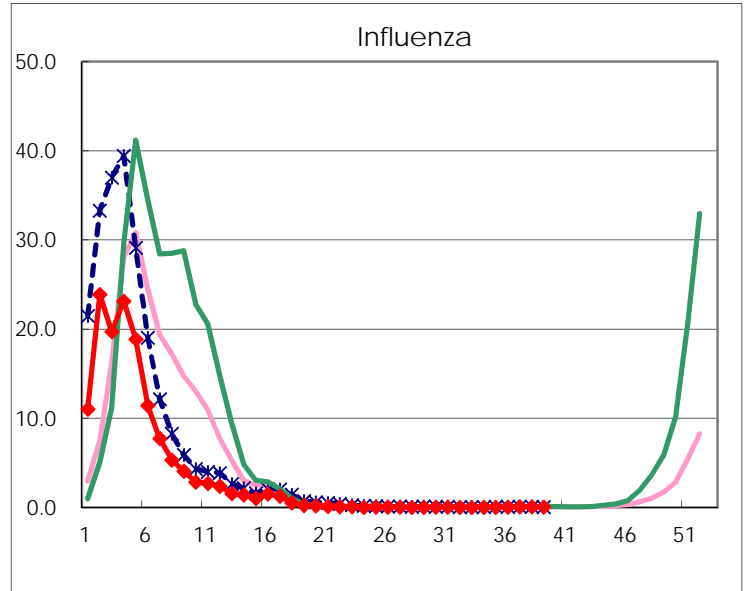
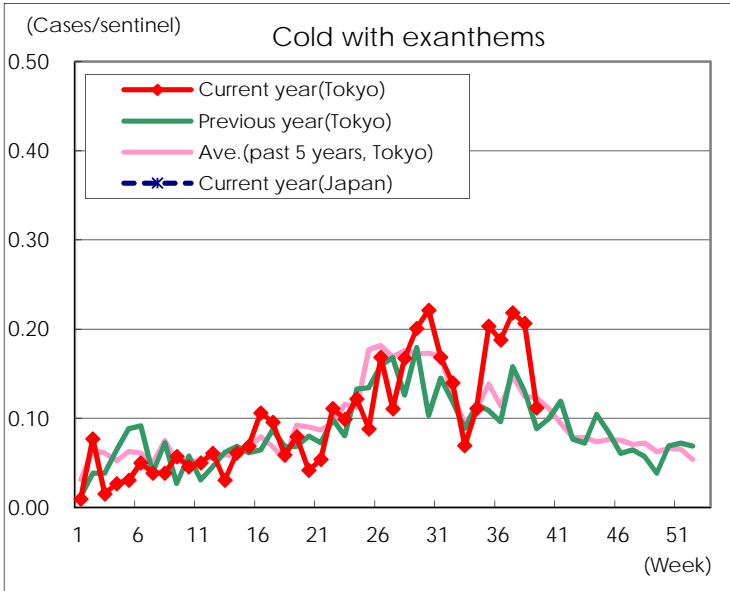
Diseases	Tokyo				
	36th	37th	38th	39th	/sentinel
Respiratory syncytial virus infection	172	247	350	209	0.80
Pharyngoconjunctival fever	95	86	63	47	0.18
Group A streptococcal pharyngitis	368	378	398	175	0.67
Infectious gastroenteritis	982	969	972	517	1.99
Chickenpox	46	54	97	73	0.28
Hand, foot, and mouth disease	1,198	1,193	1,133	594	2.28
Erythema infectiosum	141	107	108	52	0.20
Exanthem subitum	181	159	177	93	0.36
Pertussis	9	8	5	2	0.01
Herpangina	289	249	239	89	0.34
Mumps	80	94	73	78	0.30
Kawasaki disease	2	3	1	1	
Cold with exanthems	49	57	52	29	0.11
Influenza	20	30	25	16	0.04
Acute hemorrhagic conjunctivitis	1				
Epidemic keratoconjunctivitis	28	42	41	25	0.64
Bacterial meningitis		1	1	2	0.08
Aseptic meningitis	5	3		2	0.08
Mycoplasma pneumonia	11	15	23	21	0.84
Chlamydial pneumonia (excluding psittacosis)	6		2	1	0.04
Infectious gastroenteritis (only by Rotavirus)					
Influenza-Associated Hospitalizations			1		

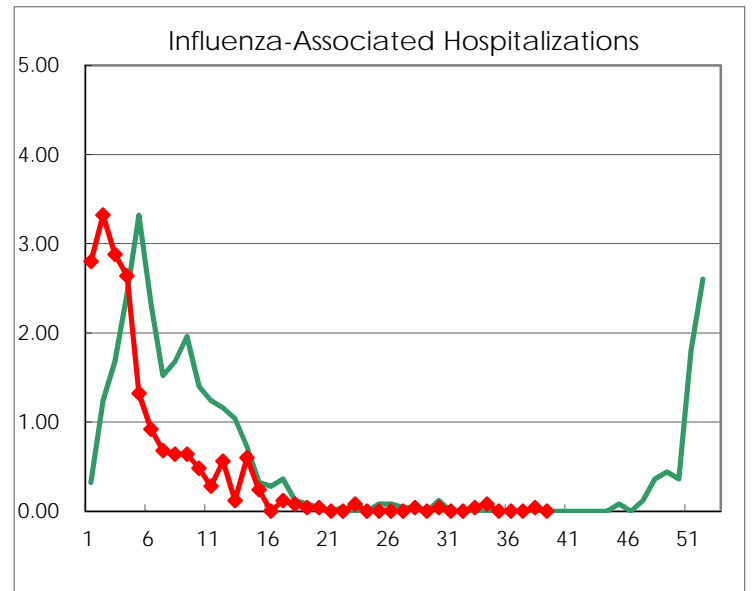
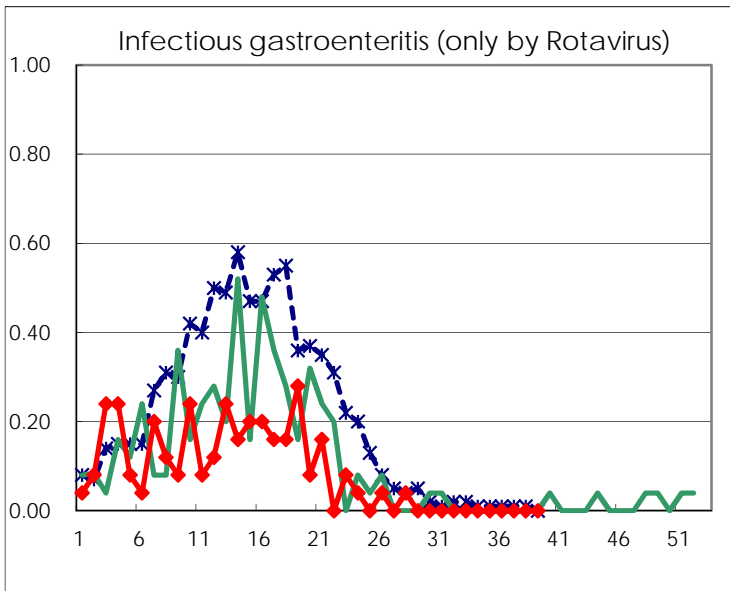
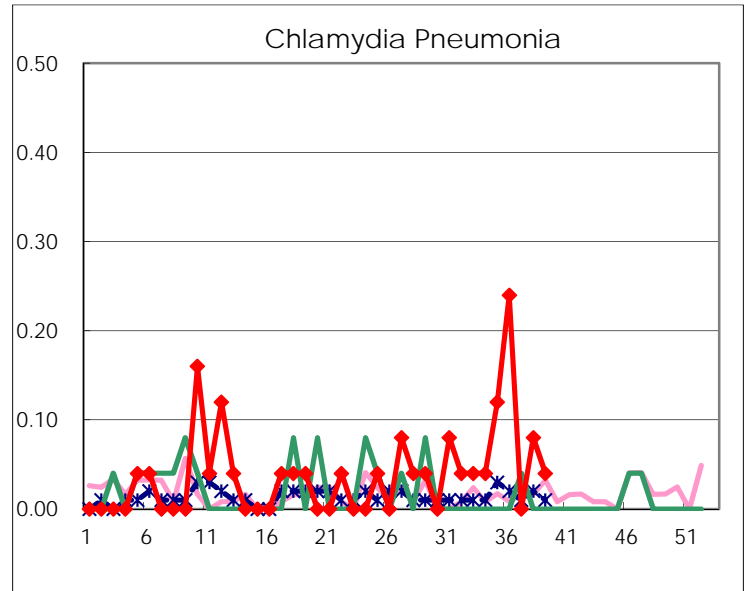
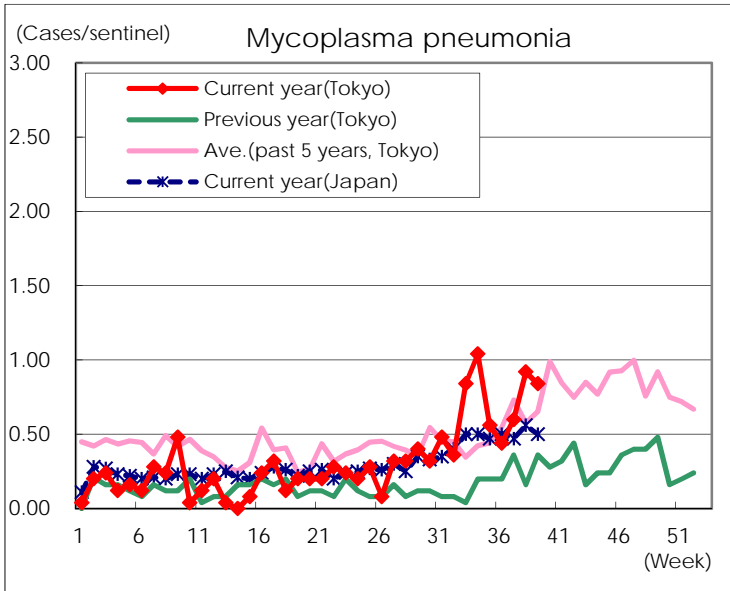
(Blank means 0.)

Disease Trend Graph (weekly reported cases per sentinel in comparison)









Number of sentinel facilities for weekly reporting		
Types of sentinels	Number of sentinels	Sentinels having reported
Pediatric	264	260
Influenza	419	411
Ophthalmic	39	39
Specially-designated	25	25