

8 October 2015 / Number 40

Surveillance System in Tokyo, Japan

The infectious diseases which all physicians must report

All physicians must report to health centers the incidence of the diseases which are shown at page one. Health centers electronically report the individual cases to Tokyo Metropolitan Infectious Disease Surveillance Center.

The infectious diseases required to be reported by the sentinels

The numbers of patients who visit the sentinel clinics or hospitals during a week are reported to health centers in Tokyo. And they electronically report the numbers to Tokyo Metropolitan Infectious Disease Surveillance Center. We have about 500 sentinel clinics and hospitals in Tokyo.

Tokyo Metropolitan Institute of Public Health

TEL:81-3-3363-3213 FAX:81-3-5332-7365

e-mail:www@tokyo-eiken.go.jp

URL:idsc.tokyo-eiken.go.jp/

Number of patients with the diseases which all physicians must report

Category	Diseases	Tokyo					Japan	
		37th	38th	39th	40th	Cum 2015	40th	Cum 2015
I	Ebola hemorrhagic fever							
	Crimean-Congo hemorrhagic fever							
	Smallpox							
	South American hemorrhagic fever							
	Plague							
	Marburg disease							
	Lassa fever							
II	Acute poliomyelitis							
	Tuberculosis	62	87	33	85	2,782	413	18,300
	Diphtheria							
	Severe Acute Respiratory Syndrome(SARS)							
	Middle East Respiratory Syndrome (MERS)							
	Avian influenza H5N1							
	Avian influenza H7N9							
III	Cholera							3
	Shigellosis	2		1	1	47	3	123
	Enterohemorrhagic Escherichia coli infection	7	12	7	2	294	74	3,100
	Typhoid fever		1		2	11	2	26
	Paratyphoid fever			1		7		26
IV	Hepatitis E					19	1	145
	West Nile fever							
	Hepatitis A	1	2	2	1	36	7	200
	Echinococcosis					1		9
	Yellow fever							
	Psittacosis							5
	Omsk hemorrhagic fever							
	Relapsing fever							3
	Kyasanur forest disease							
	Q fever							
	Rabies							
	Coccidioidomycosis					1		2
	Monkeypox							
	Severe Fever with Thrombocytopenia Syndrome						1	50
	Hemorrhagic fever with renal syndrome							
	Western equine encephalitis							
	Tick-borne encephalitis							
	Anthrax							
	Chikungunya fever					6		14
	Scrub typhus(Tsutsugamushi disease)					4		82
	Dengue fever	4	5	2	1	69	11	229
	Eastern equine encephalitis							
	Avian influenza (excluding H5N1 and H7N9)							
	Nipah virus infection							
	Japanese spotted fever					1	6	139
	Japanese encephalitis							1
	Hantavirus pulmonary syndrome							
	Herpes B virus infection							
	Glanders							
	Brucellosis					2		4
	Venezuelan equine encephalitis							
	Hendra virus infection							
	Epidemic typhus							
Botulism								
Malaria			1		14	1	34	
Tularemia							2	
Lyme disease					1		7	
Lyssavirus infection(excluding rabies)								
Rift valley fever								
Melioidosis					1		1	
Legionellosis	3	3	7	8	111	33	1,226	
Leptospirosis	1			2	8	3	21	
Rocky mountain spotted fever								

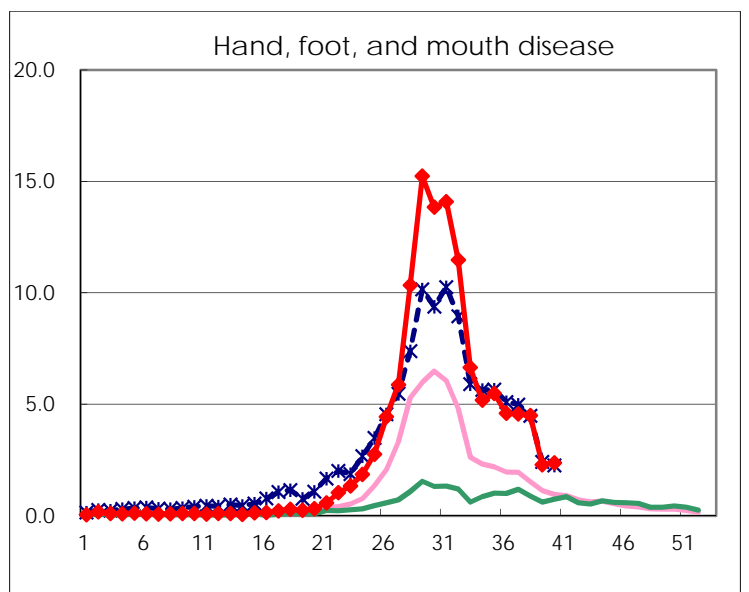
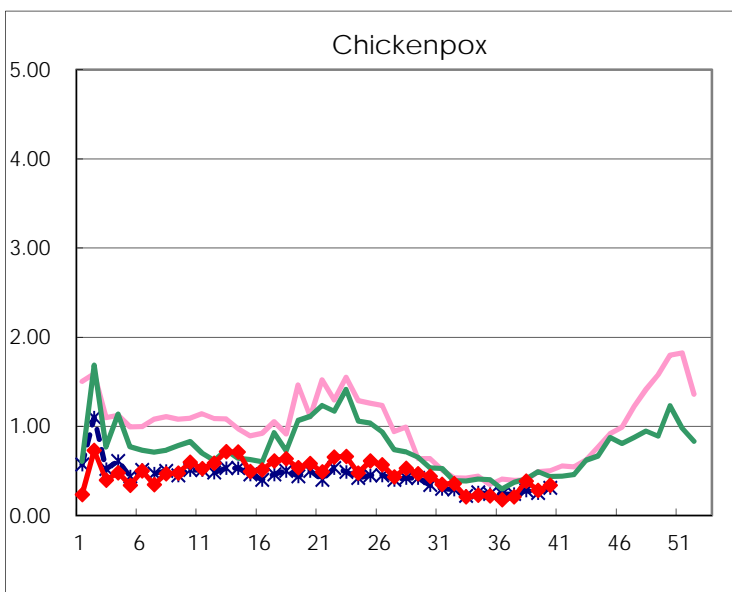
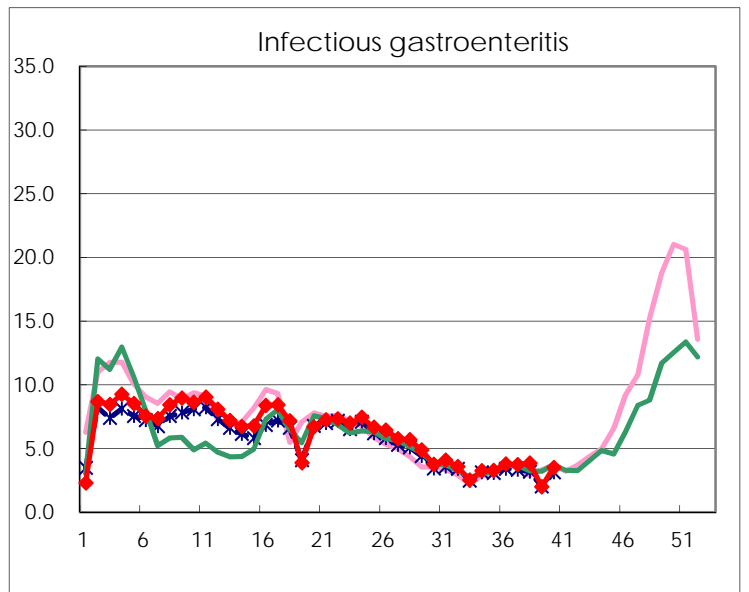
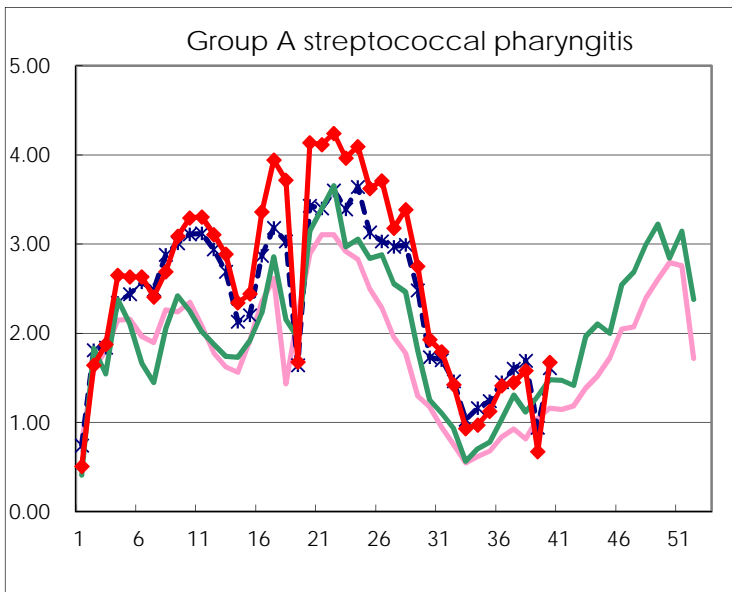
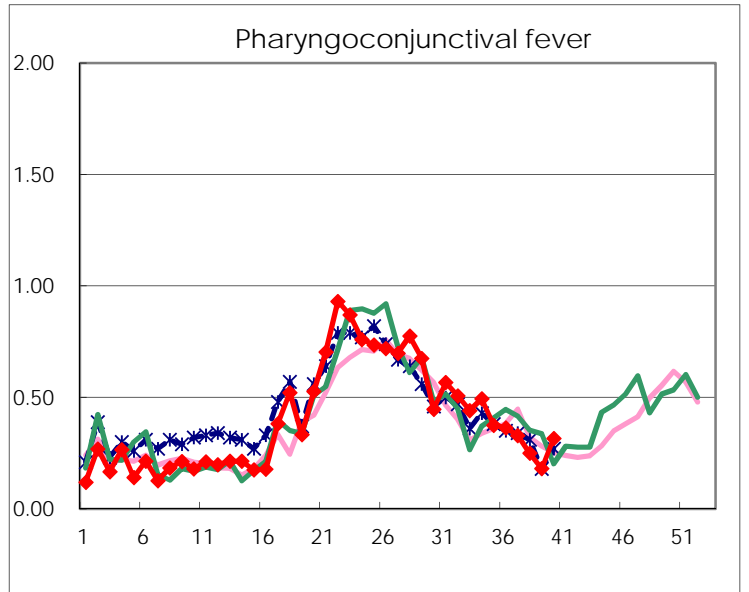
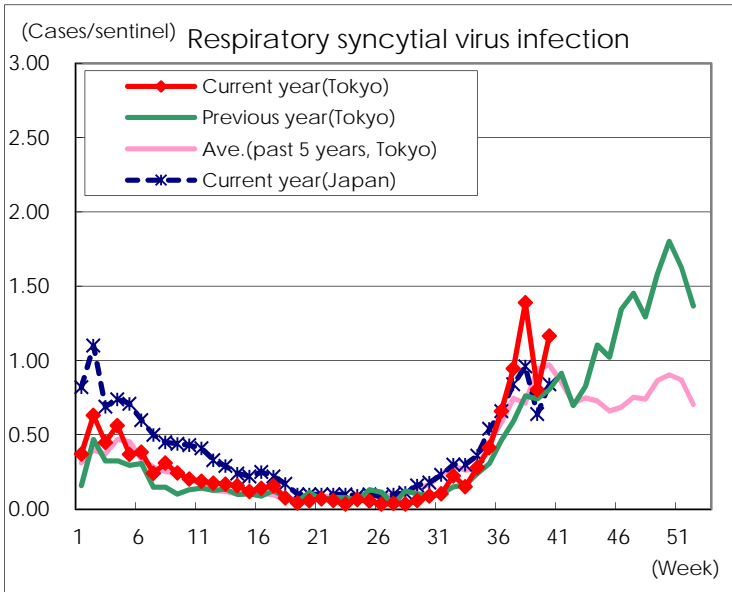
Category	Diseases	Tokyo					Japan	
		37th	38th	39th	40th	Cum 2015	40th	Cum 2015
V	Amebiasis	2	4	3	2	147	7	833
	Viral hepatitis(excluding hepatitis A and E)	1	1			37	4	186
	CRE infection	10	5	1	2	176	23	1,214
	Acute encephalitis(excluding JE and WNE)	1		1		35	8	384
	Cryptosporidiosis					3	1	12
	Creutzfeldt-Jakob disease	1	1			20	2	141
	Severe invasive streptococcal infections(TSLS)	1				49	5	329
	Acquired immunodeficiency syndrome (AIDS)	9	12	4	8	323	16	1,057
	Giardiasis		1	1		16	2	61
	Invasive <i>Haemophilus influenzae</i> disease	1		1	1	20	2	181
	Invasive meningococcal disease					7		25
	Invasive pneumococcal disease	1	3	4	8	233	24	1,702
	Varicella (limited to hospitalized case)		5		1	40	1	228
	Congenital rubella syndrome							
	Syphilis	25	33	12	22	759	35	1,855
	Disseminated cryptococcosis					8	1	90
	Tetanus					1	3	89
	Vancomycin-resistant <i>S. aureus</i> infection							
	Vancomycin-resistant Enterococcus infection	1				2	1	49
	Rubella		1	1	1	28	3	137
Measles					9		28	
MDRA infection					6	1	25	

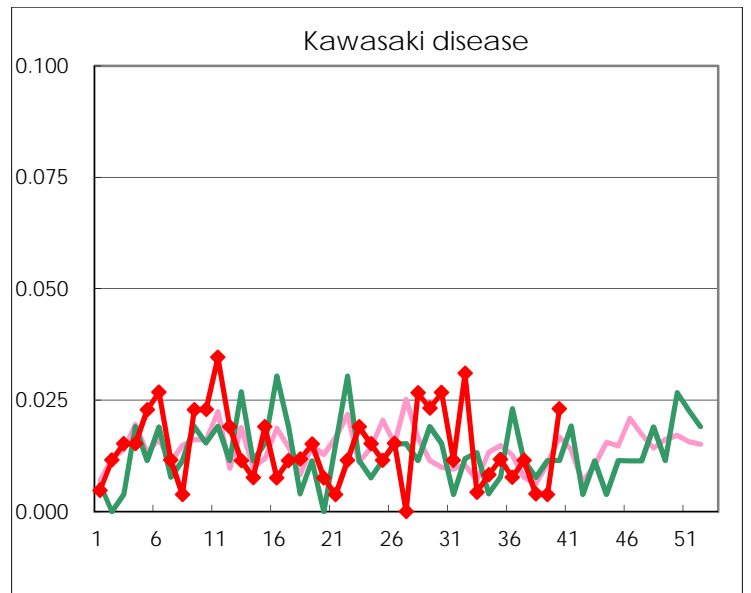
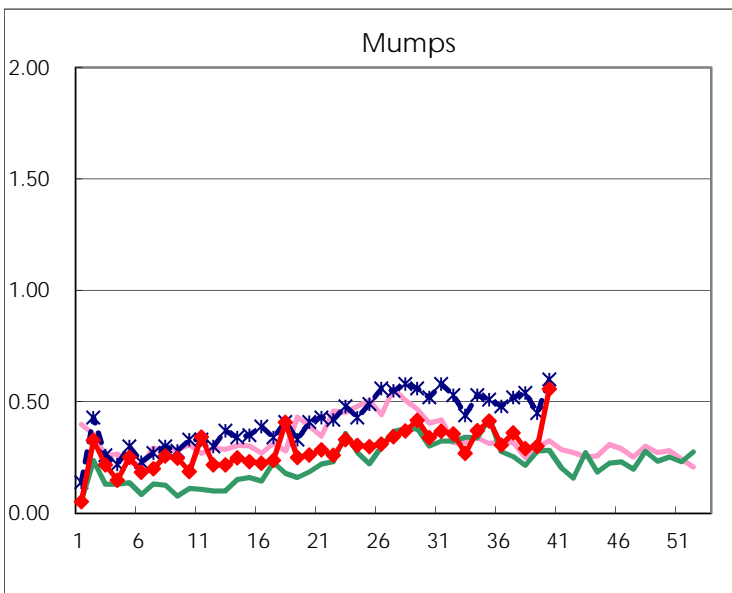
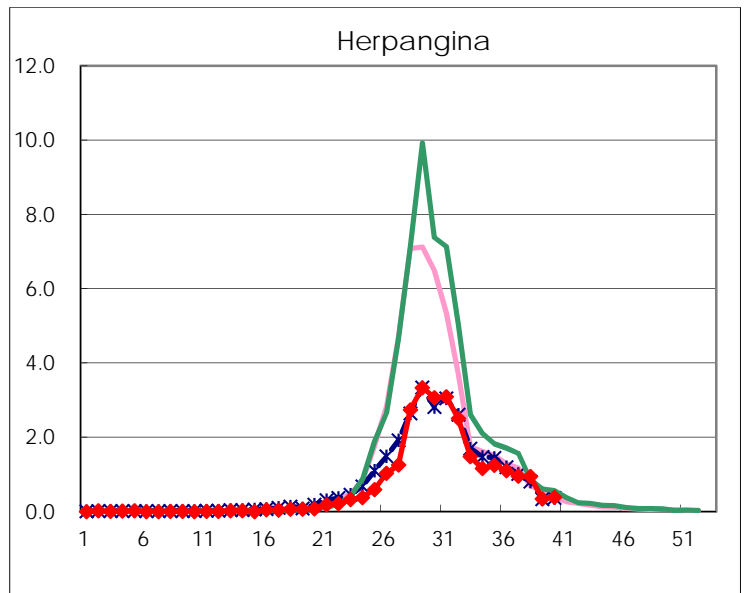
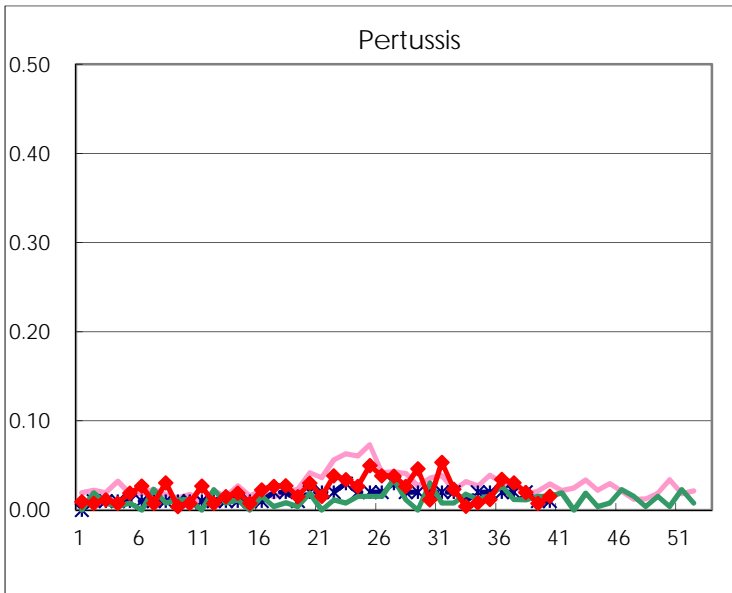
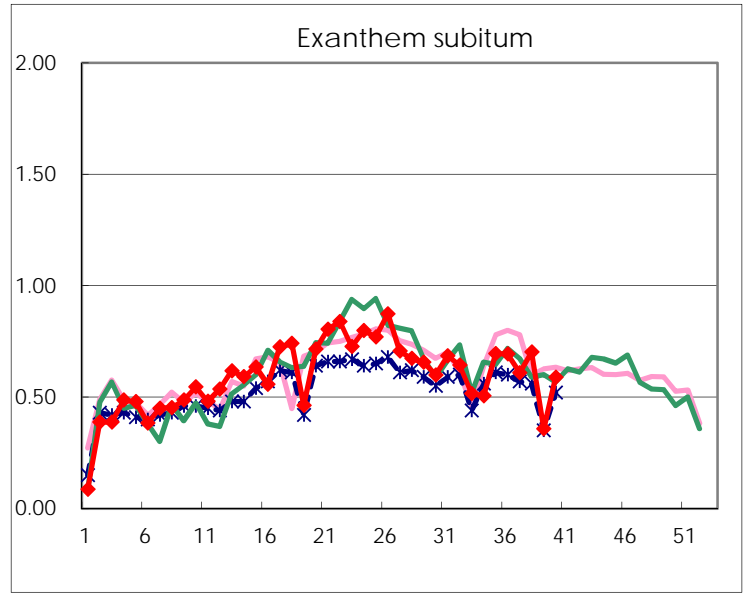
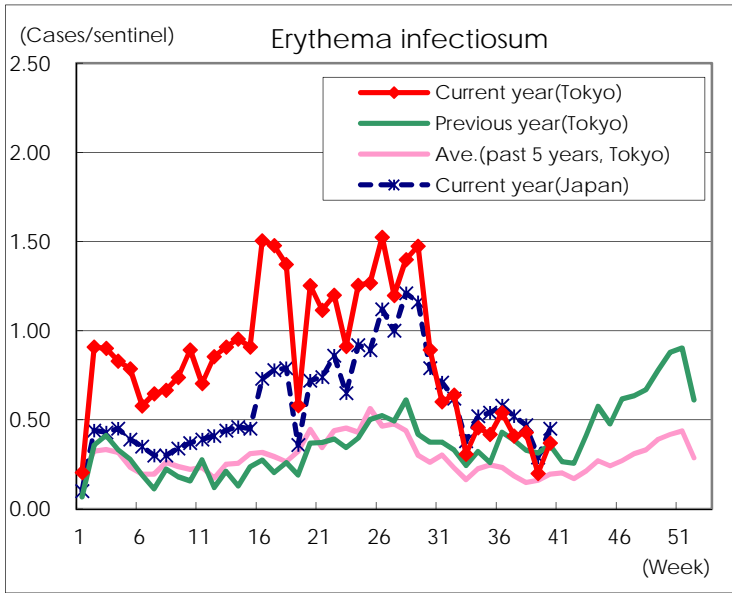
Number of patients with the diseases to be reported
by the designated clinics and hospitals

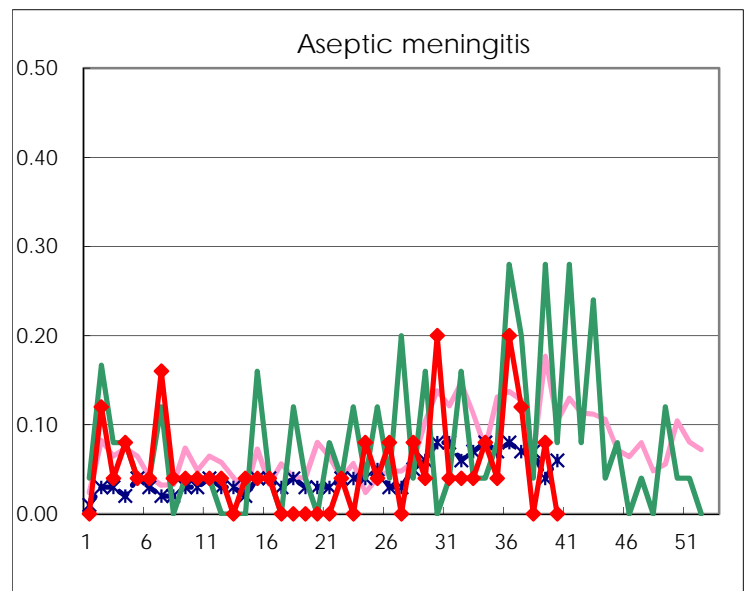
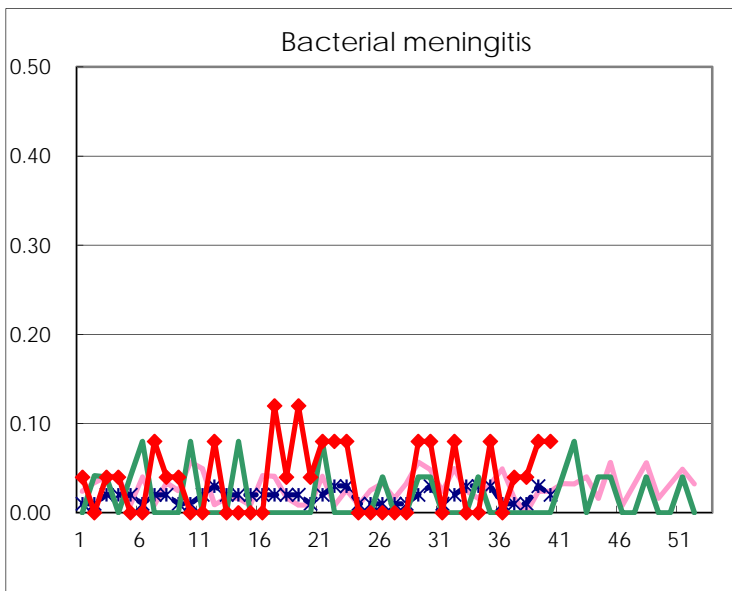
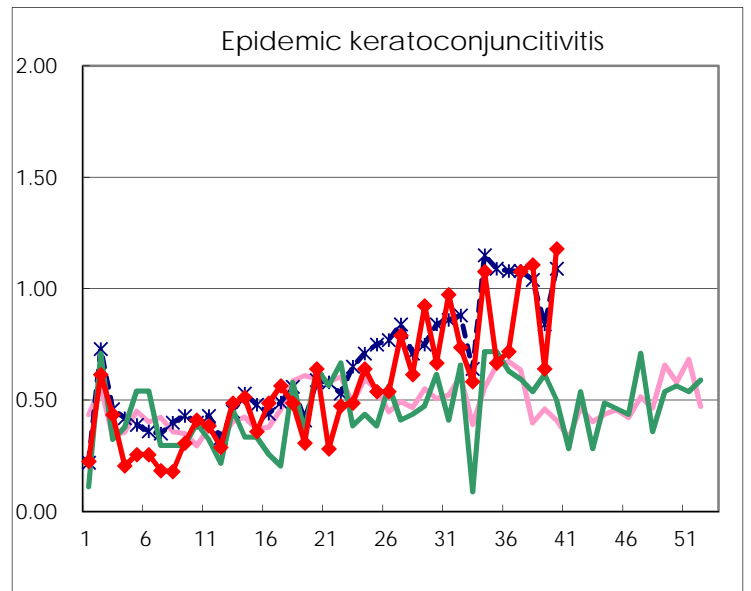
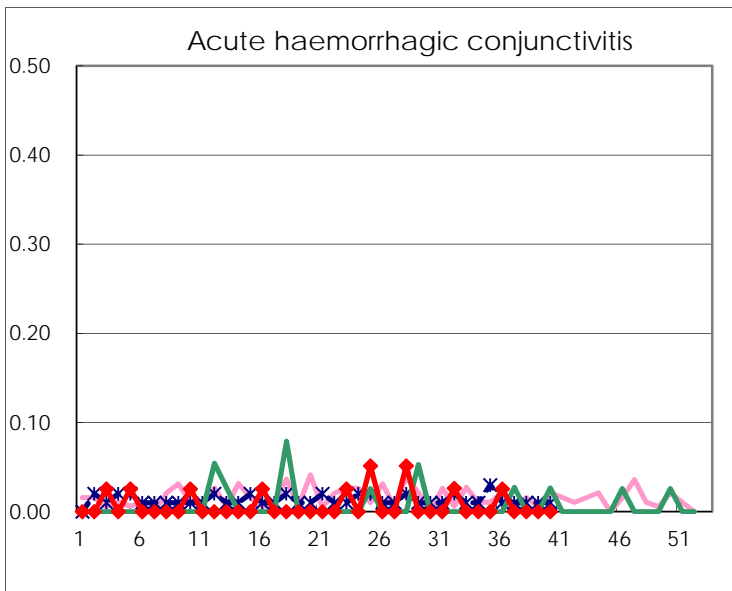
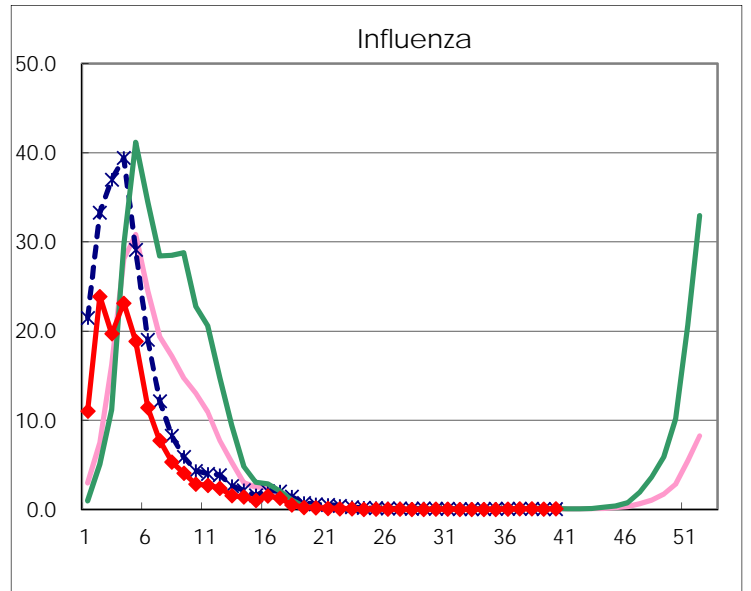
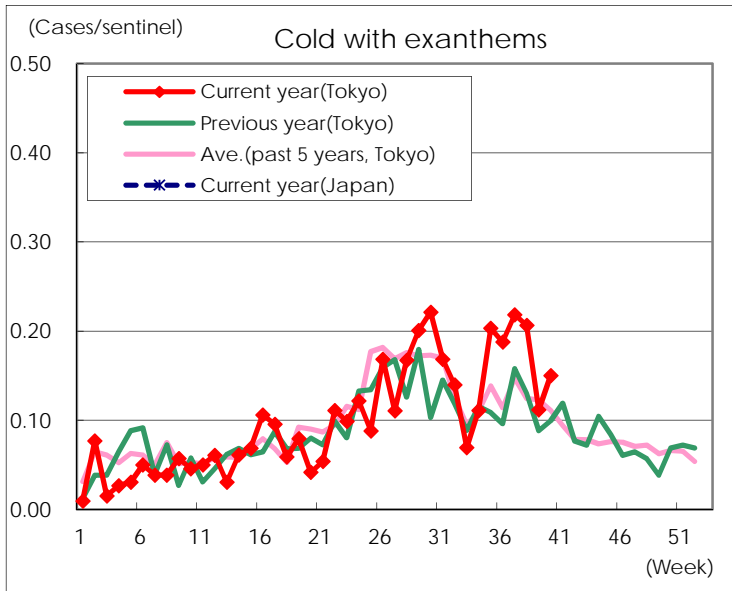
Diseases	Tokyo				
	37th	38th	39th	40th	/sentinel
Respiratory syncytial virus infection	247	350	209	303	1.17
Pharyngoconjunctival fever	86	63	47	82	0.32
Group A streptococcal pharyngitis	378	398	175	435	1.67
Infectious gastroenteritis	969	972	517	909	3.50
Chickenpox	54	97	73	88	0.34
Hand, foot, and mouth disease	1,193	1,133	594	618	2.38
Erythema infectiosum	107	108	52	96	0.37
Exanthem subitum	159	177	93	153	0.59
Pertussis	8	5	2	4	0.02
Herpangina	249	239	89	102	0.39
Mumps	94	73	78	145	0.56
Kawasaki disease	3	1	1	6	0.02
Cold with exanthems	57	52	29	39	0.15
Influenza	30	25	16	28	0.07
Acute hemorrhagic conjunctivitis					
Epidemic keratoconjunctivitis	42	41	25	46	1.18
Bacterial meningitis	1	1	2	2	0.08
Aseptic meningitis	3		2		
Mycoplasma pneumonia	15	23	22	36	1.44
Chlamydial pneumonia (excluding psittacosis)		2	1	4	0.16
Infectious gastroenteritis (only by Rotavirus)				2	0.08
Influenza-Associated Hospitalizations		1			

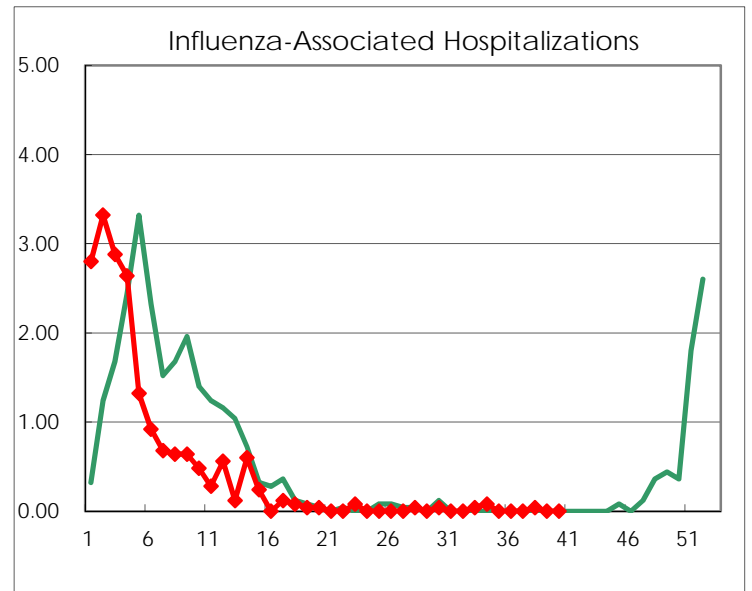
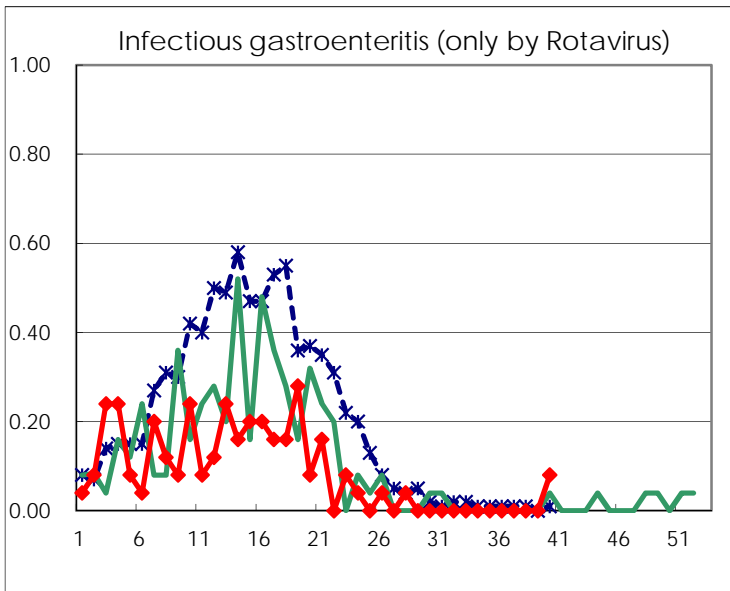
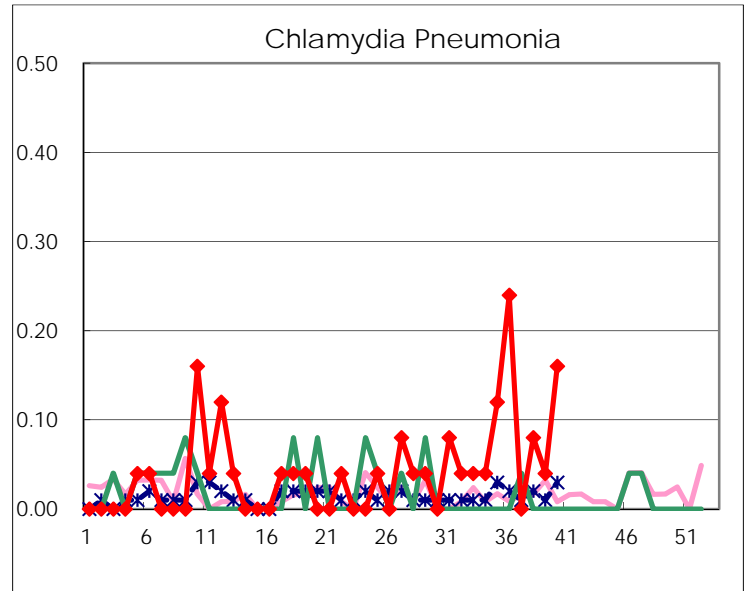
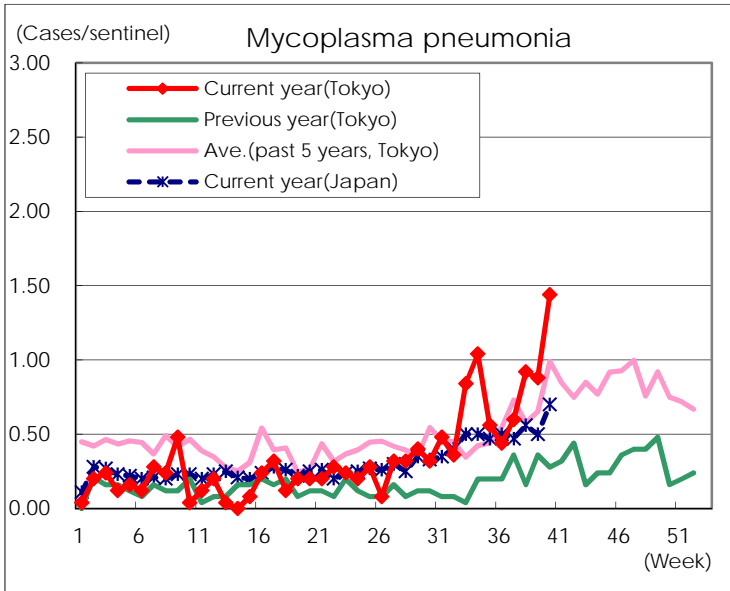
(Blank means 0.)

Disease Trend Graph (weekly reported cases per sentinel in comparison)









Number of sentinel facilities for weekly reporting		
Types of sentinels	Number of sentinels	Sentinels having reported
Pediatric	264	260
Influenza	419	411
Ophthalmic	39	39
Specially-designated	25	25