

22 October 2015 / Number 42

Surveillance System in Tokyo, Japan

The infectious diseases which all physicians must report

All physicians must report to health centers the incidence of the diseases which are shown at page one. Health centers electronically report the individual cases to Tokyo Metropolitan Infectious Disease Surveillance Center.

The infectious diseases required to be reported by the sentinels

The numbers of patients who visit the sentinel clinics or hospitals during a week are reported to health centers in Tokyo. And they electronically report the numbers to Tokyo Metropolitan Infectious Disease Surveillance Center. We have about 500 sentinel clinics and hospitals in Tokyo.

Tokyo Metropolitan Institute of Public Health

TEL:81-3-3363-3213 FAX:81-3-5332-7365

e-mail:www@tokyo-eiken.go.jp

URL:idsc.tokyo-eiken.go.jp/

Number of patients with the diseases which all physicians must report

Category	Diseases	Tokyo					Japan	
		39th	40th	41st	42nd	Cum 2015	42nd	Cum 2015
I	Ebola hemorrhagic fever							
	Crimean-Congo hemorrhagic fever							
	Smallpox							
	South American hemorrhagic fever							
	Plague							
	Marburg disease							
	Lassa fever							
II	Acute poliomyelitis							
	Tuberculosis	34	93	64	49	2,905	261	19,113
	Diphtheria							
	Severe Acute Respiratory Syndrome(SARS)							
	Middle East Respiratory Syndrome (MERS)							
	Avian influenza H5N1							
	Avian influenza H7N9							
III	Cholera						1	4
	Shigellosis	1	1			47	3	132
	Enterohemorrhagic Escherichia coli infection	7	2	5	6	305	32	3,210
	Typhoid fever		2	1		12		28
	Paratyphoid fever	1				7	1	27
IV	Hepatitis E			1		20	1	151
	West Nile fever							
	Hepatitis A	2	1	1		37	4	209
	Echinococcosis					1	1	12
	Yellow fever							
	Psittacosis							5
	Omsk hemorrhagic fever							
	Relapsing fever							3
	Kyasanur forest disease							
	Q fever							
	Rabies							
	Coccidioidomycosis					1		2
	Monkeypox							
	Severe Fever with Thrombocytopenia Syndrome						1	52
	Hemorrhagic fever with renal syndrome							
	Western equine encephalitis							
	Tick-borne encephalitis							
	Anthrax							
	Chikungunya fever					6		14
	Scrub typhus(Tsutsugamushi disease)					4		83
	Dengue fever	2	1	3		72	5	245
	Eastern equine encephalitis							
	Avian influenza (excluding H5N1 and H7N9)							
	Nipah virus infection							
	Japanese spotted fever					1	5	166
	Japanese encephalitis							1
	Hantavirus pulmonary syndrome							
	Herpes B virus infection							
	Glanders							
	Brucellosis					2		4
	Venezuelan equine encephalitis							
	Hendra virus infection							
Epidemic typhus								
Botulism								
Malaria	1		1	1	16	2	38	
Tularemia							2	
Lyme disease					1	1	8	
Lyssavirus infection(excluding rabies)								
Rift valley fever								
Melioidosis					1		1	
Legionellosis	7	10	7	2	122	29	1,303	
Leptospirosis		2			8		21	
	Rocky mountain spotted fever							

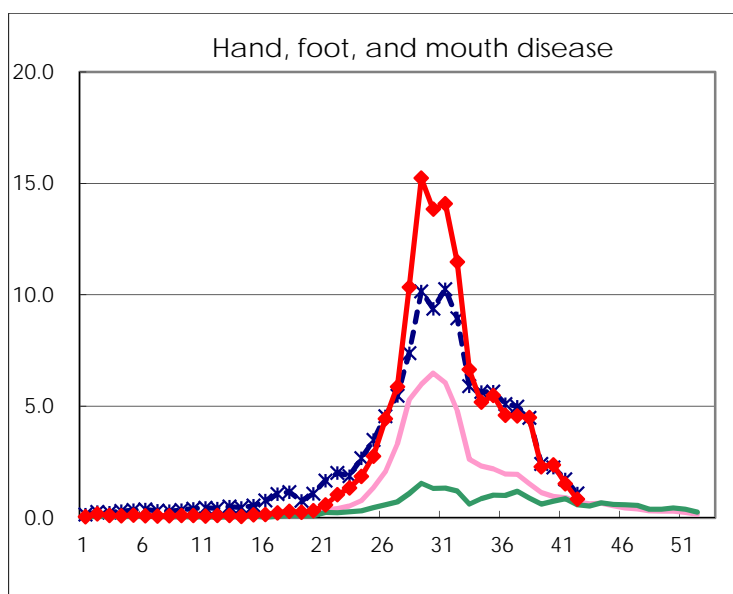
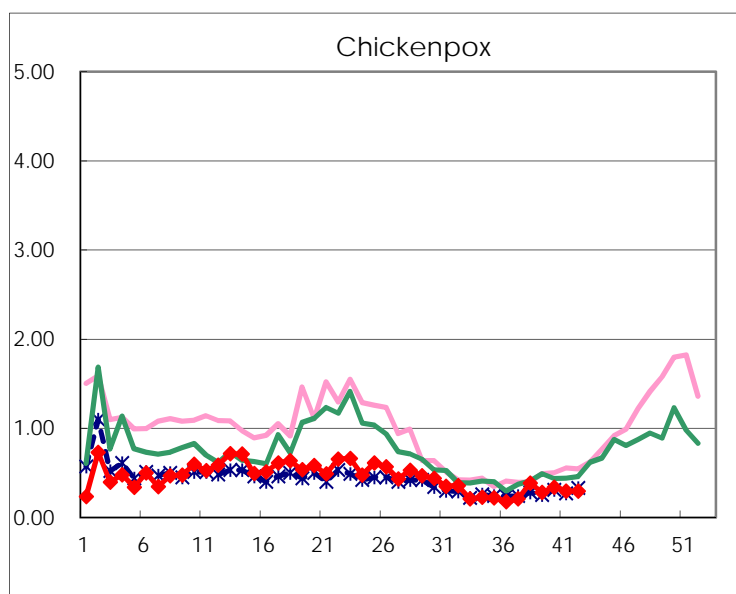
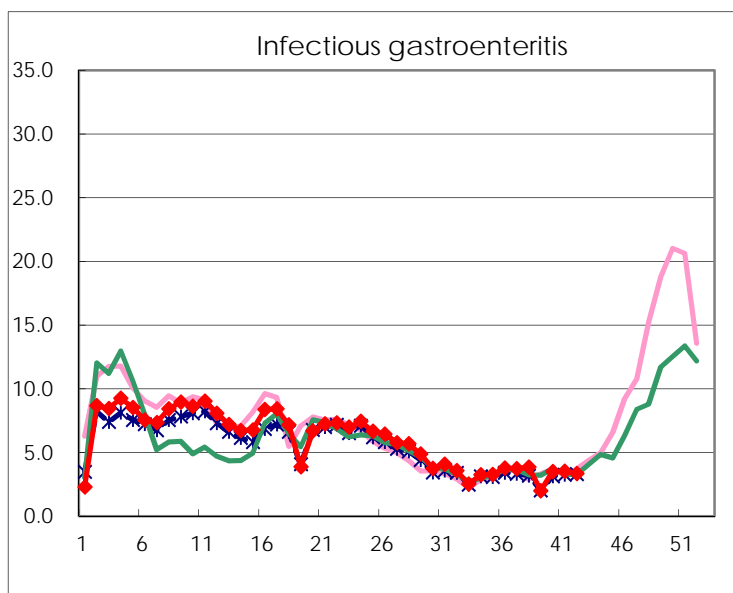
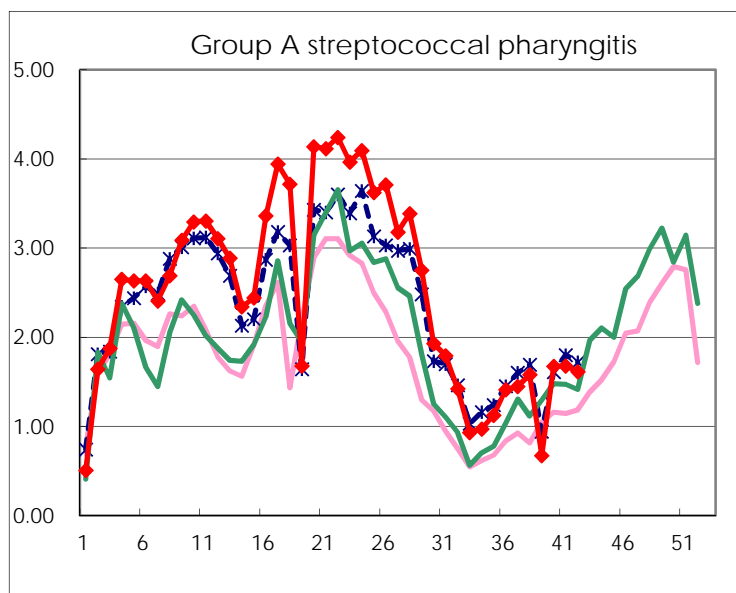
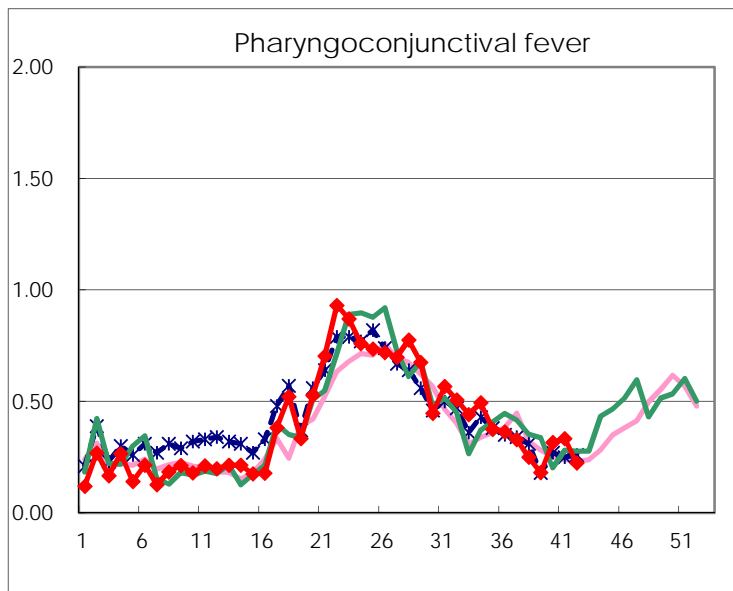
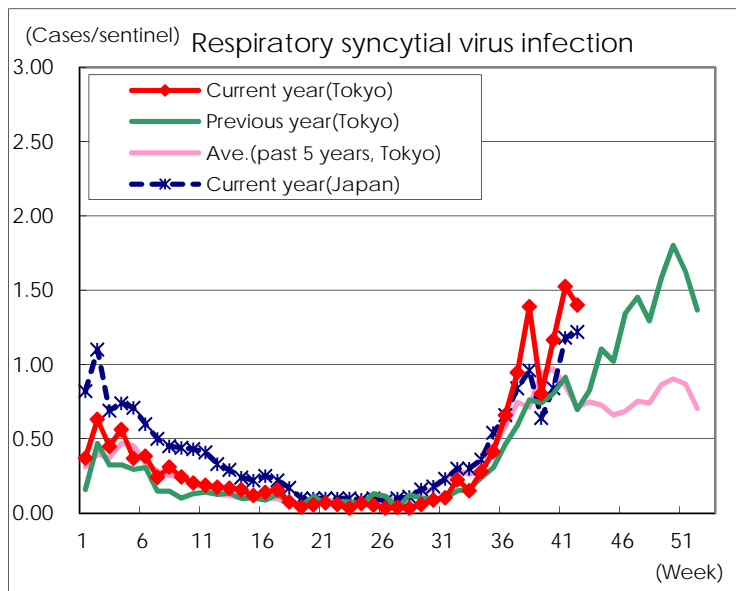
Category	Diseases	Tokyo				Japan		
		39th	40th	41st	42nd	Cum 2015	42nd	Cum 2015
V	Amebiasis	3	2	2	4	153	7	871
	Viral hepatitis(excluding hepatitis A and E)			2		39	5	197
	CRE infection	1	2	14	4	194	18	1,305
	Acute encephalitis(excluding JE and WNE)	1		2		37	5	401
	Cryptosporidiosis					3		12
	Creutzfeldt-Jakob disease		1		1	22	3	146
	Severe invasive streptococcal infections(TSLS)					49	3	340
	Acquired immunodeficiency syndrome (AIDS)	4	8	12	5	340	14	1,116
	Giardiasis	1				16	1	65
	Invasive <i>Haemophilus influenzae</i> disease	1	1			20	3	188
	Invasive meningococcal disease					7		26
	Invasive pneumococcal disease	4	8	4	6	243	16	1,767
	Varicella (limited to hospitalized case)		1	1	2	43	1	238
	Congenital rubella syndrome							
	Syphilis	12	22	22	21	802	23	1,967
	Disseminated cryptococcosis			1		9		94
	Tetanus					1	1	92
	Vancomycin-resistant <i>S. aureus</i> infection							
	Vancomycin-resistant Enterococcus infection					2	1	50
	Rubella	1	1	1	2	31	1	144
Measles					9		29	
MDRA infection					6		25	

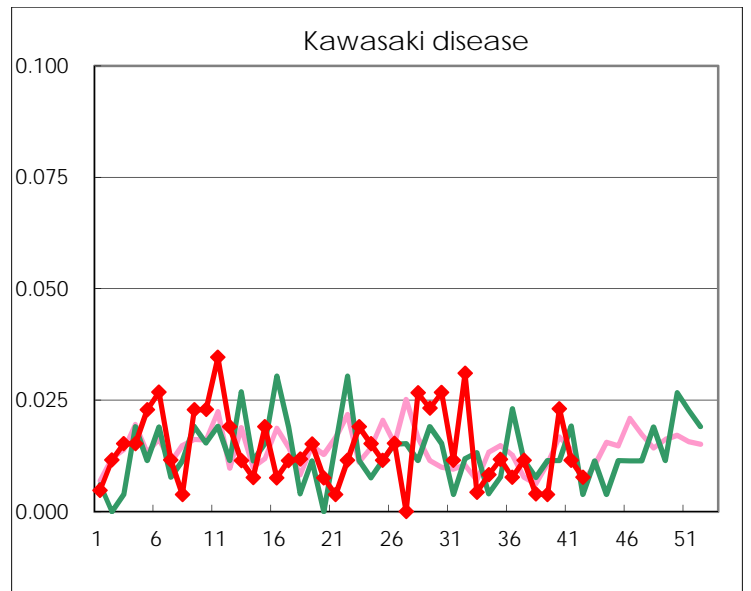
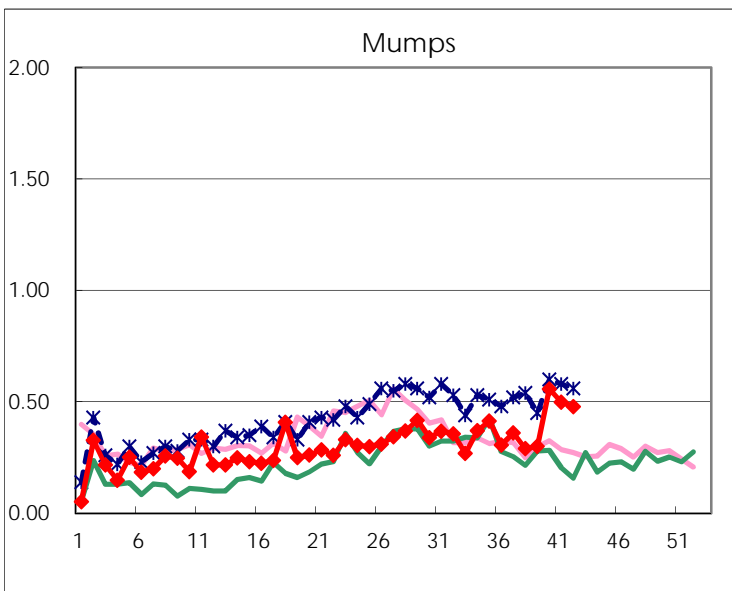
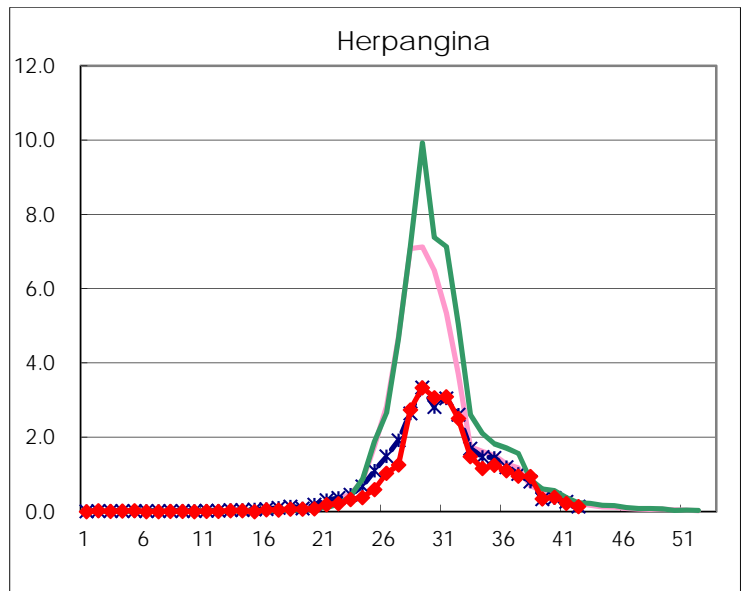
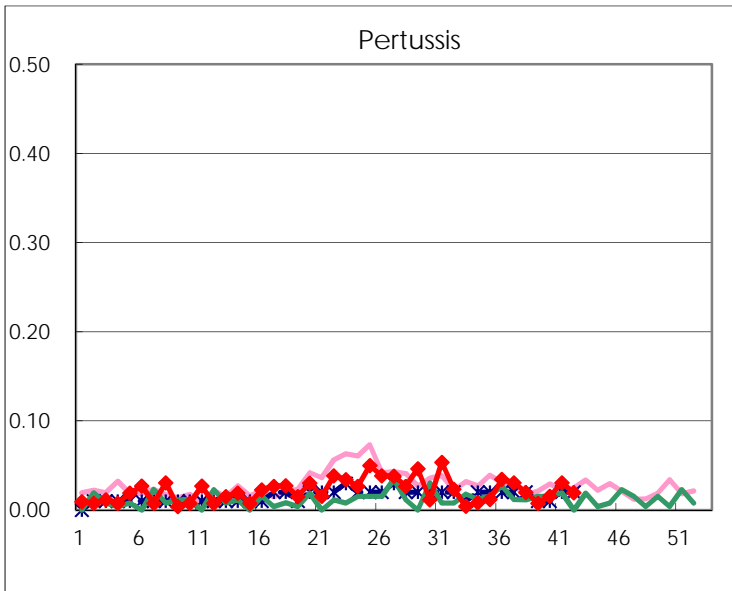
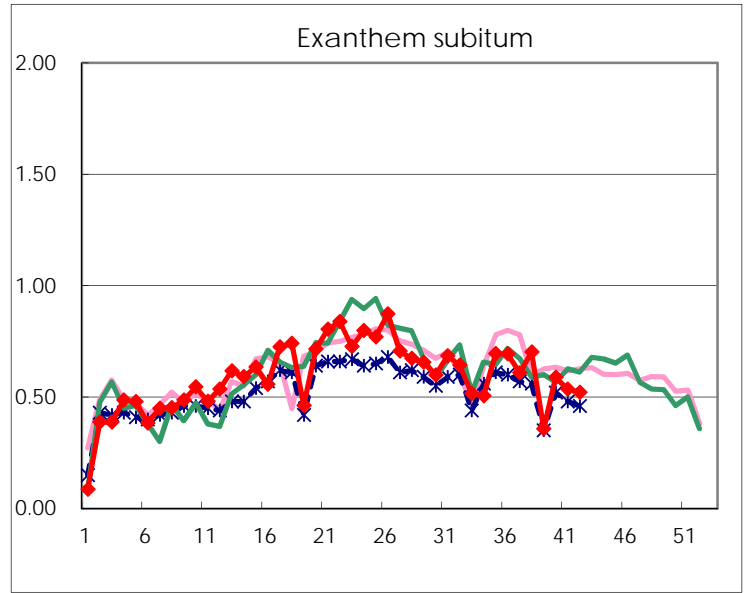
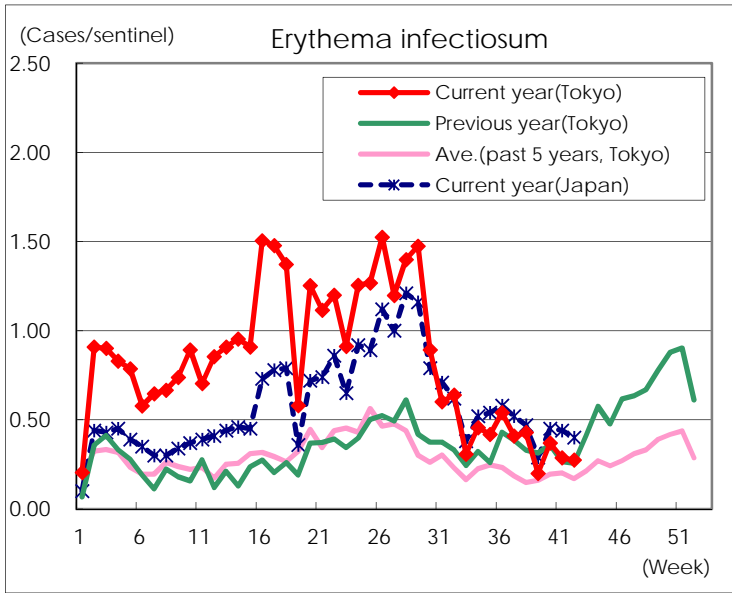
Number of patients with the diseases to be reported
by the designated clinics and hospitals

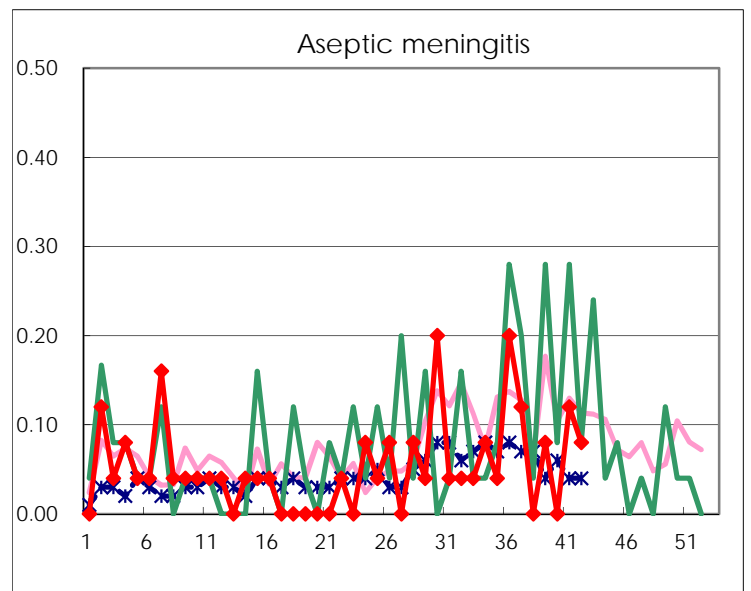
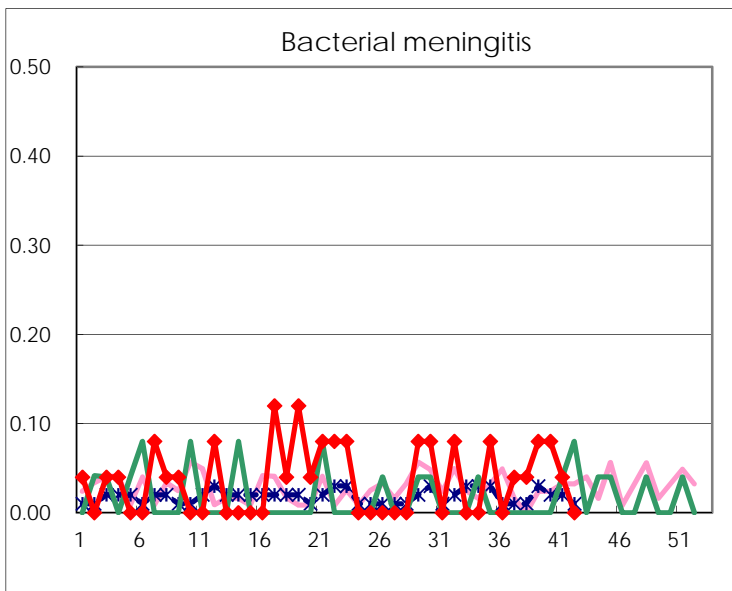
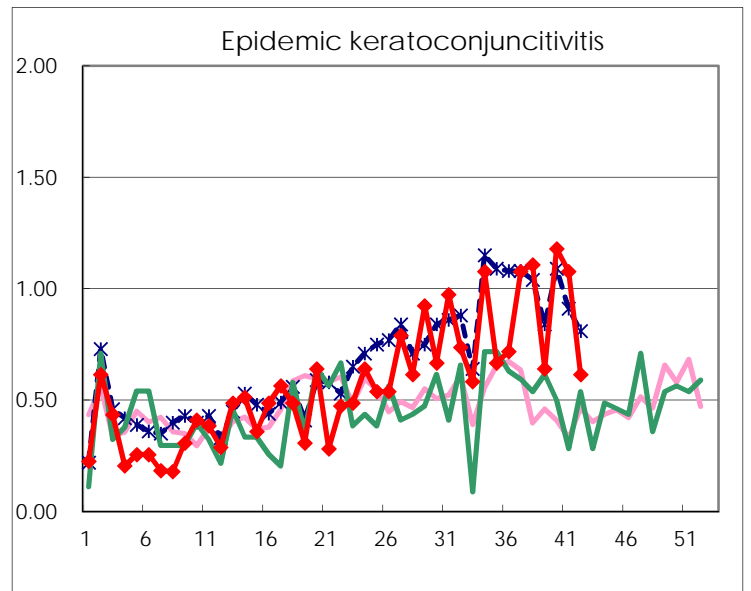
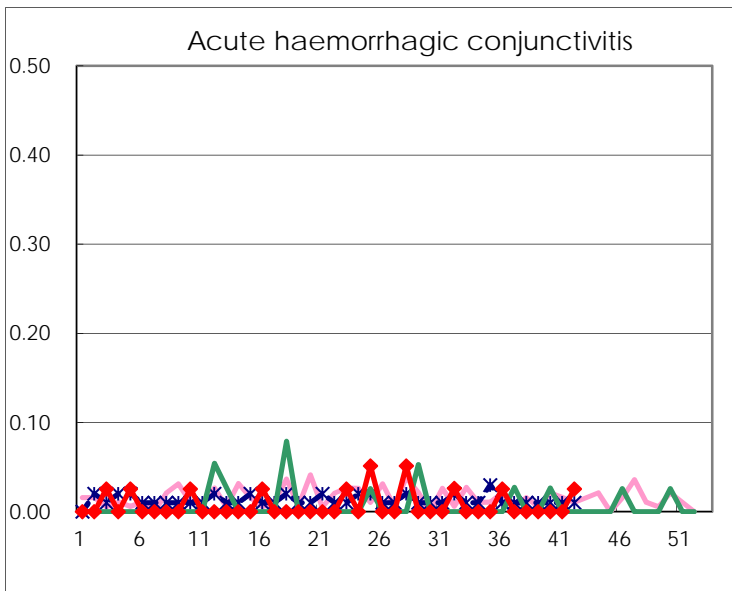
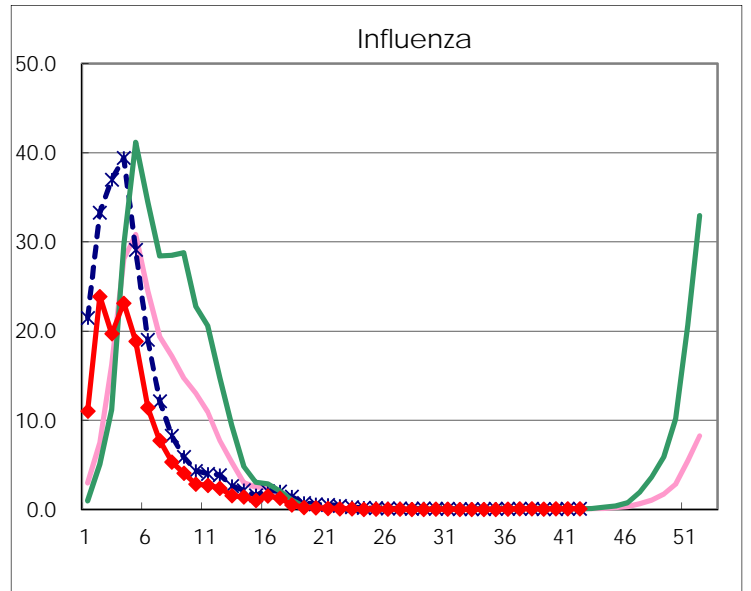
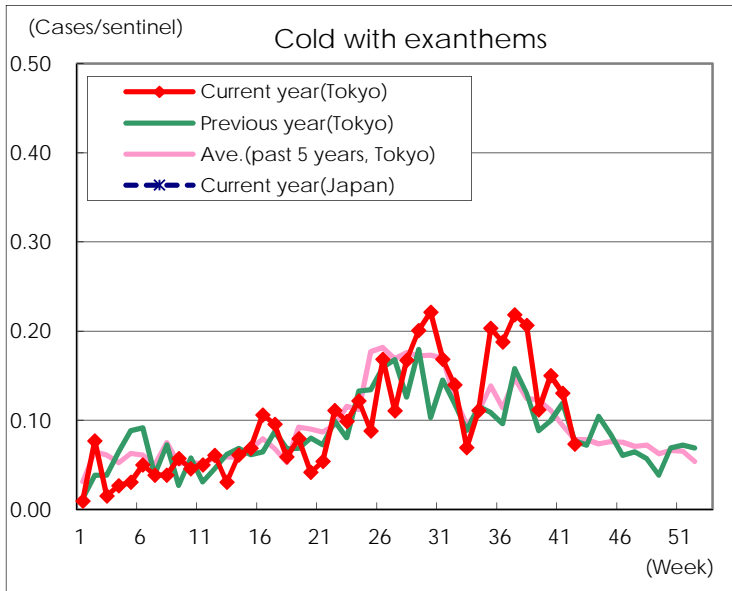
Diseases	Tokyo				
	39th	40th	41st	42nd	/sentinel
Respiratory syncytial virus infection	209	303	398	363	1.40
Pharyngoconjunctival fever	47	82	87	58	0.22
Group A streptococcal pharyngitis	175	435	438	418	1.61
Infectious gastroenteritis	517	909	917	867	3.35
Chickenpox	73	88	77	76	0.29
Hand, foot, and mouth disease	594	618	398	215	0.83
Erythema infectiosum	52	96	75	71	0.27
Exanthem subitum	93	153	140	135	0.52
Pertussis	2	4	8	5	0.02
Herpangina	89	102	59	36	0.14
Mumps	78	145	130	124	0.48
Kawasaki disease	1	6	3	2	0.01
Cold with exanthems	29	39	34	19	0.07
Influenza	16	28	36	32	0.08
Acute hemorrhagic conjunctivitis				1	0.03
Epidemic keratoconjunctivitis	25	46	42	24	0.62
Bacterial meningitis	2	2	1		
Aseptic meningitis	2		3	2	0.08
Mycoplasma pneumonia	22	36	43	22	0.88
Chlamydial pneumonia (excluding psittacosis)	1	4	3		
Infectious gastroenteritis (only by Rotavirus)		2	1		
Influenza-Associated Hospitalizations					

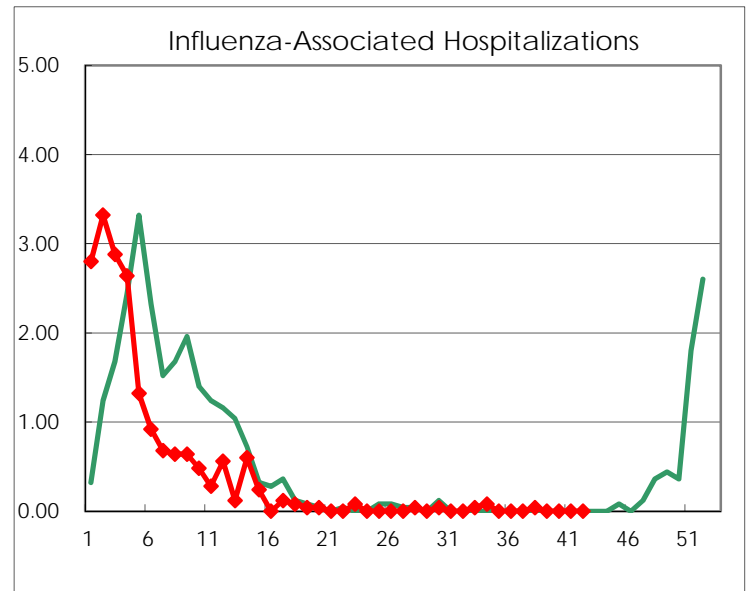
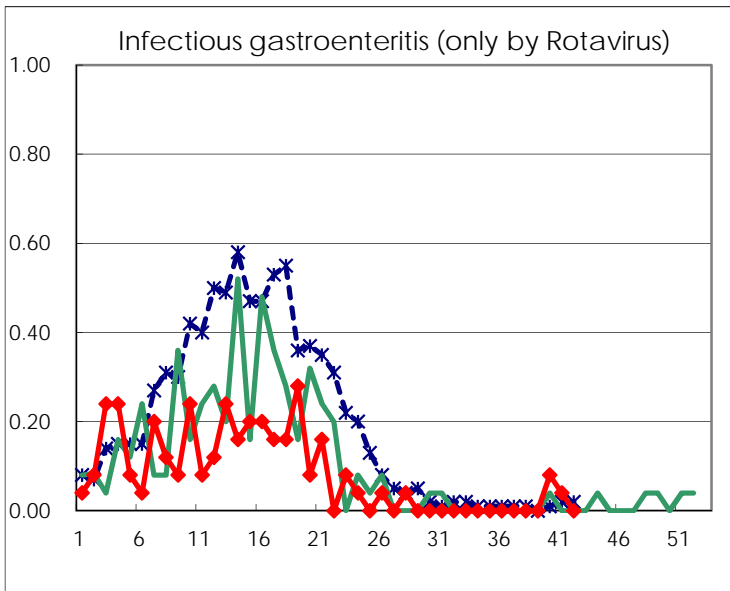
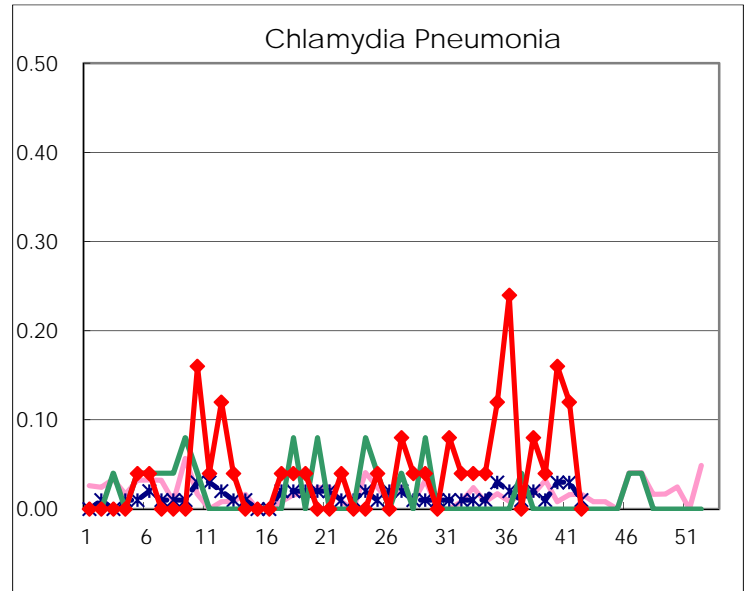
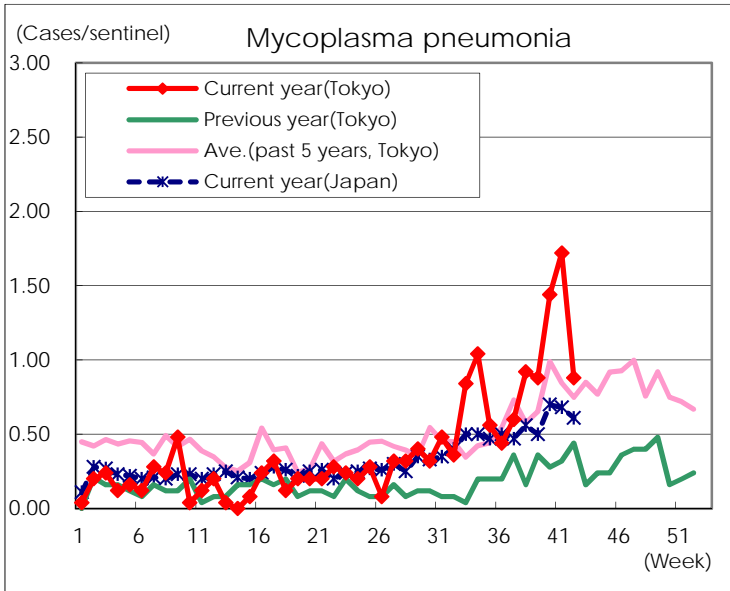
(Blank means 0.)

Disease Trend Graph (weekly reported cases per sentinel in comparison)









Number of sentinel facilities for weekly reporting		
Types of sentinels	Number of sentinels	Sentinels having reported
Pediatric	264	259
Influenza	419	410
Ophthalmic	39	39
Specially-designated	25	25