

## 5 November 2015 / Number 44

### Surveillance System in Tokyo, Japan

The infectious diseases which all physicians must report

All physicians must report to health centers the incidence of the diseases which are shown at page one. Health centers electronically report the individual cases to Tokyo Metropolitan Infectious Disease Surveillance Center.

The infectious diseases required to be reported by the sentinels

The numbers of patients who visit the sentinel clinics or hospitals during a week are reported to health centers in Tokyo. And they electronically report the numbers to Tokyo Metropolitan Infectious Disease Surveillance Center. We have about 500 sentinel clinics and hospitals in Tokyo.

Tokyo Metropolitan Institute of Public Health

TEL:81-3-3363-3213 FAX:81-3-5332-7365

e-mail:[www@tokyo-eiken.go.jp](mailto:www@tokyo-eiken.go.jp)

URL:[idsc.tokyo-eiken.go.jp/](http://idsc.tokyo-eiken.go.jp/)

---

Number of patients with the diseases which all physicians must report

Category	Diseases	Tokyo					Japan	
		41st	42nd	43rd	44th	Cum 2015	44th	Cum 2015
I	Ebola hemorrhagic fever							
	Crimean-Congo hemorrhagic fever							
	Smallpox							
	South American hemorrhagic fever							
	Plague							
	Marburg disease							
	Lassa fever							
II	Acute poliomyelitis							
	Tuberculosis	67	53	58	56	3,026	308	20,041
	Diphtheria							
	Severe Acute Respiratory Syndrome(SARS)							
	Middle East Respiratory Syndrome (MERS)							
	Avian influenza H5N1							
	Avian influenza H7N9							
III	Cholera							4
	Shigellosis			2		49	4	140
	Enterohemorrhagic Escherichia coli infection	5	6	5	4	314	34	3,308
	Typhoid fever	1				12	1	31
	Paratyphoid fever			1		8	1	29
IV	Hepatitis E	1		2		22	1	157
	West Nile fever							
	Hepatitis A	1				37	3	215
	Echinococcosis					1		13
	Yellow fever							
	Psittacosis							5
	Omsk hemorrhagic fever							
	Relapsing fever							3
	Kyasanur forest disease							
	Q fever							
	Rabies							
	Coccidioidomycosis				1	2	1	3
	Monkeypox							
	Severe Fever with Thrombocytopenia Syndrome							54
	Hemorrhagic fever with renal syndrome							
	Western equine encephalitis							
	Tick-borne encephalitis							
	Anthrax							
	Chikungunya fever					6		14
	Scrub typhus(Tsutsugamushi disease)					4	6	95
	Dengue fever	3		1	2	75	2	253
	Eastern equine encephalitis							
	Avian influenza (excluding H5N1 and H7N9)							
	Nipah virus infection							
	Japanese spotted fever					1	4	189
	Japanese encephalitis						1	2
	Hantavirus pulmonary syndrome							
	Herpes B virus infection							
	Glanders							
	Brucellosis					2		4
	Venezuelan equine encephalitis							
	Hendra virus infection							
Epidemic typhus								
Botulism							1	
Malaria	1	1			16		39	
Tularemia							2	
Lyme disease					1		8	
Lyssavirus infection(excluding rabies)								
Rift valley fever								
Melioidosis					1		1	
Legionellosis	7	2	3	4	129	18	1,347	
Leptospirosis			1		9		24	
Rocky mountain spotted fever								

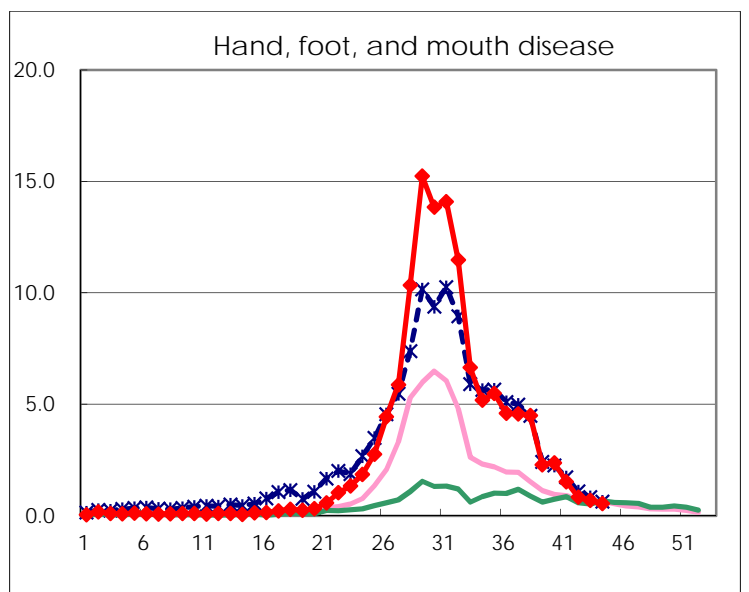
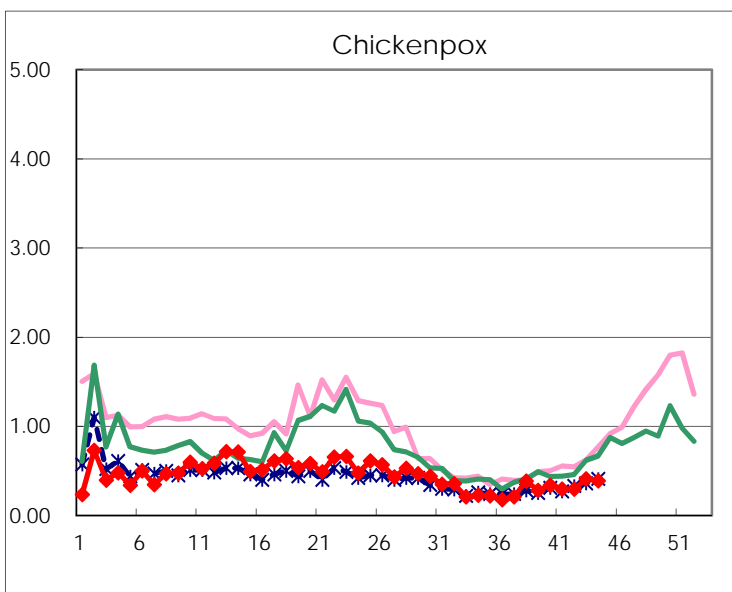
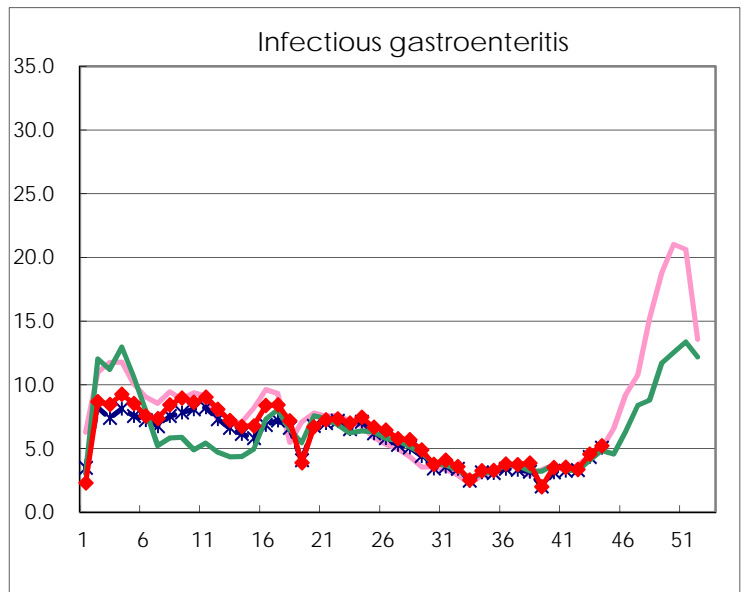
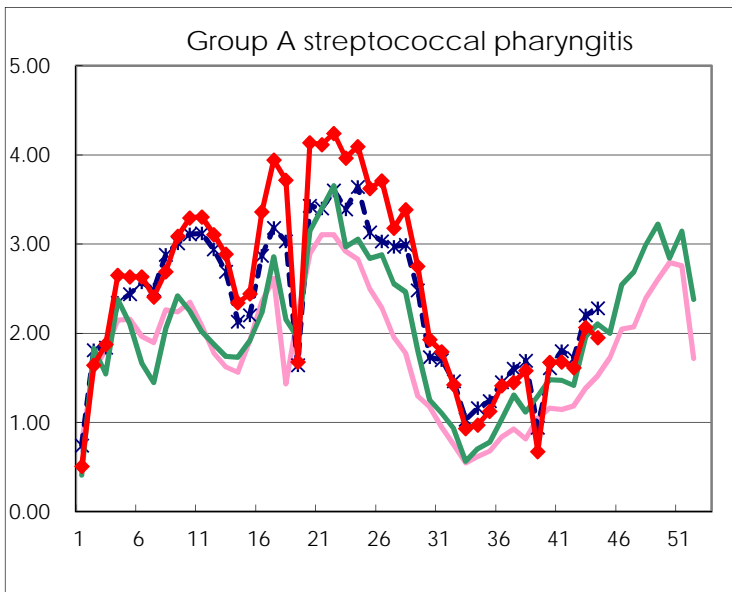
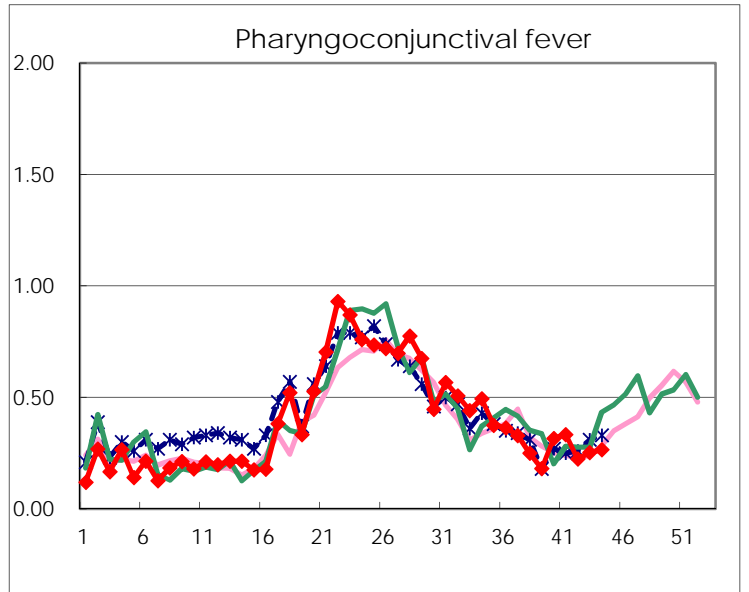
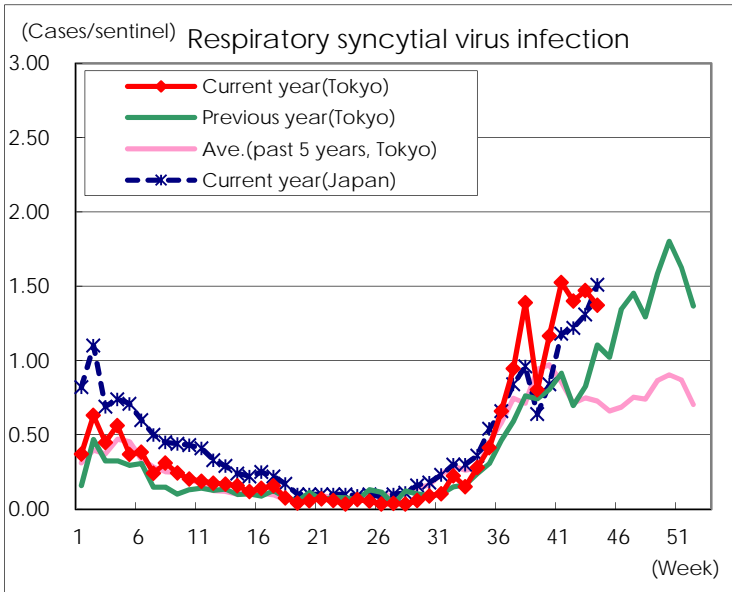
Category	Diseases	Tokyo					Japan	
		41st	42nd	43rd	44th	Cum 2015	44th	Cum 2015
V	Amebiasis	2	4	3	4	160	11	911
	Viral hepatitis(excluding hepatitis A and E)	2		2		41	3	206
	CRE infection	14	4	2	2	197	21	1,387
	Acute encephalitis(excluding JE and WNE)	2		3	1	41	4	420
	Cryptosporidiosis					3		13
	Creutzfeldt-Jakob disease		1			22		150
	Severe invasive streptococcal infections(TSLS)			2	1	52	5	355
	Acquired immunodeficiency syndrome (AIDS)	12	5	10	5	355	14	1,167
	Giardiasis			1		17	1	66
	Invasive <i>Haemophilus influenzae</i> disease			1		21	3	195
	Invasive meningococcal disease					7		27
	Invasive pneumococcal disease	4	6	2	7	252	29	1,838
	Varicella (limited to hospitalized case)	1	2		1	44	2	247
	Congenital rubella syndrome							
	Syphilis	22	21	18	28	848	42	2,100
	Disseminated cryptococcosis	1				9	1	95
	Tetanus					1	1	97
	Vancomycin-resistant <i>S. aureus</i> infection							
	Vancomycin-resistant Enterococcus infection					2		50
	Rubella	1	2			31		145
Measles					9		29	
MDRA infection				1	7	2	28	

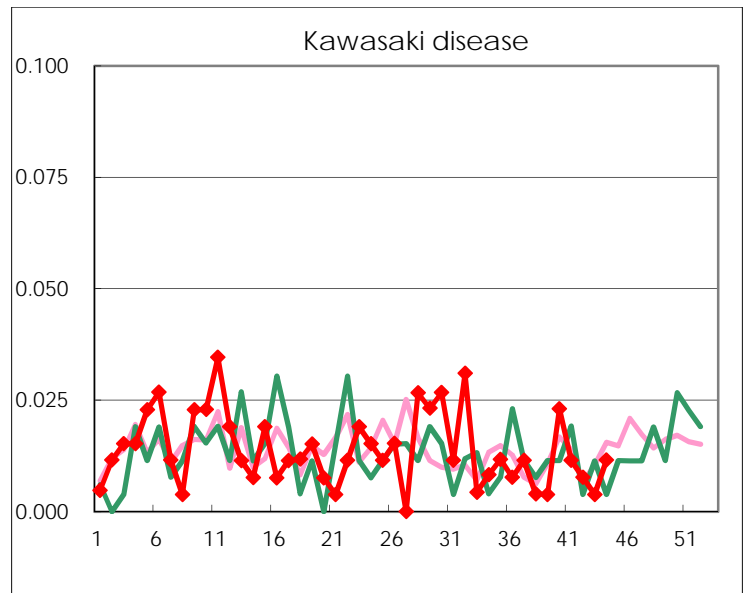
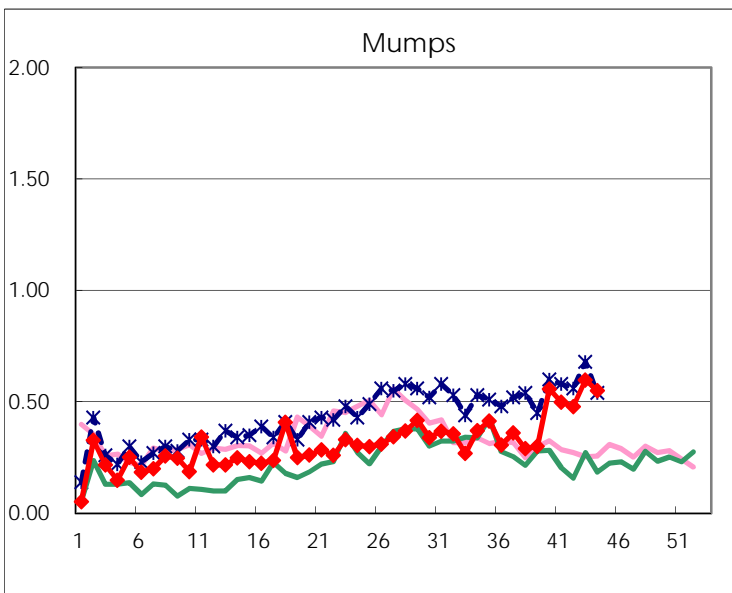
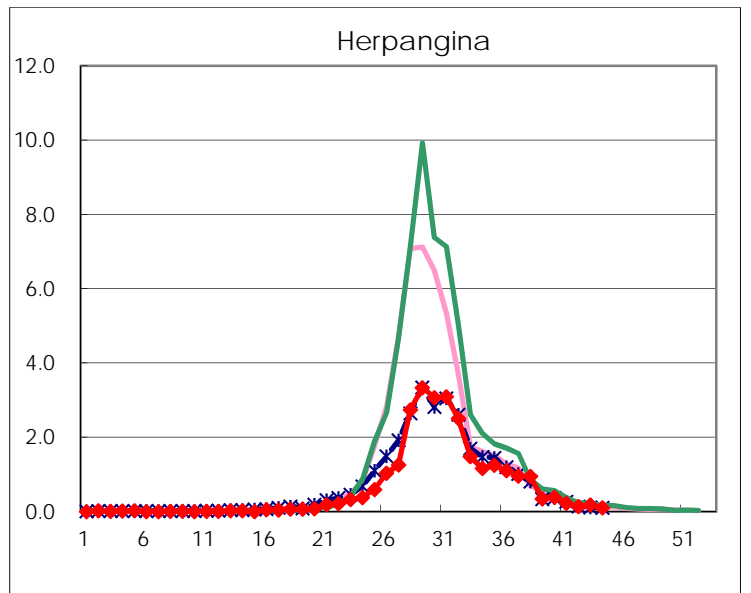
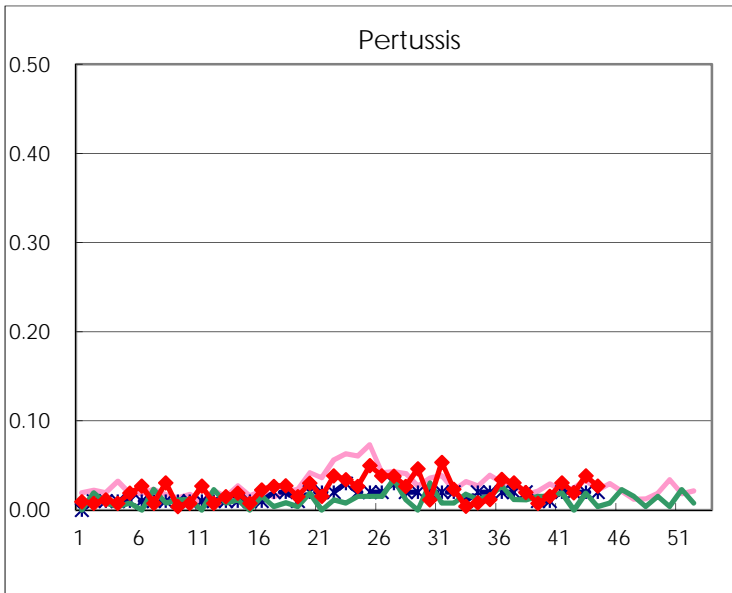
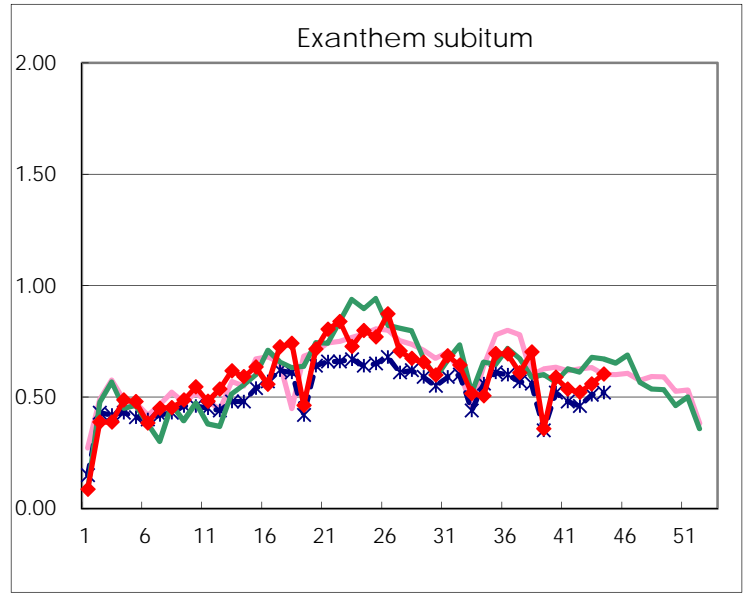
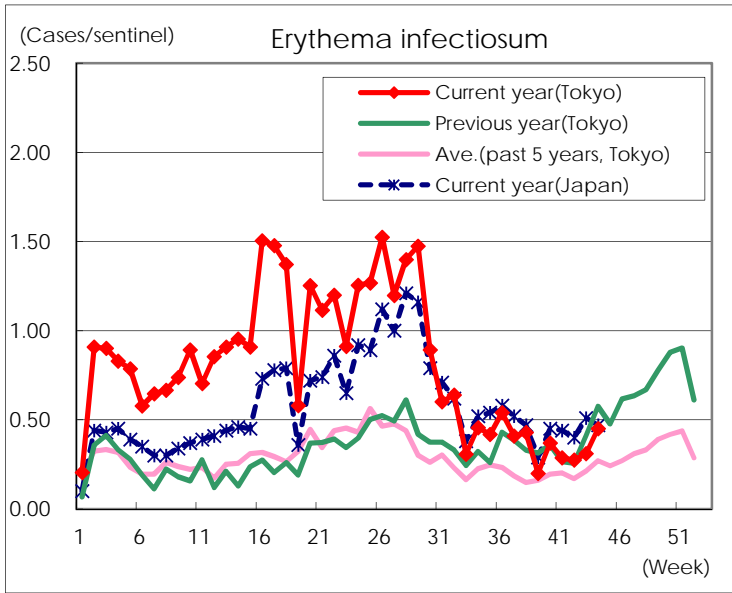
Number of patients with the diseases to be reported  
by the designated clinics and hospitals

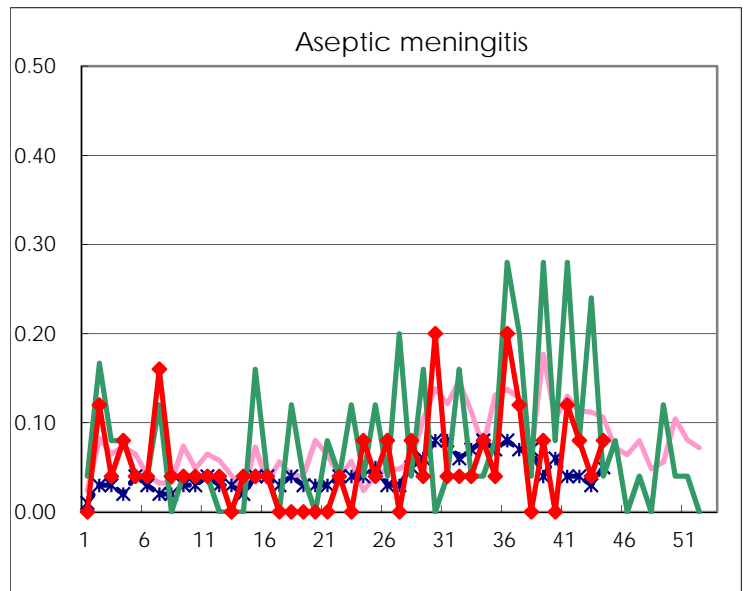
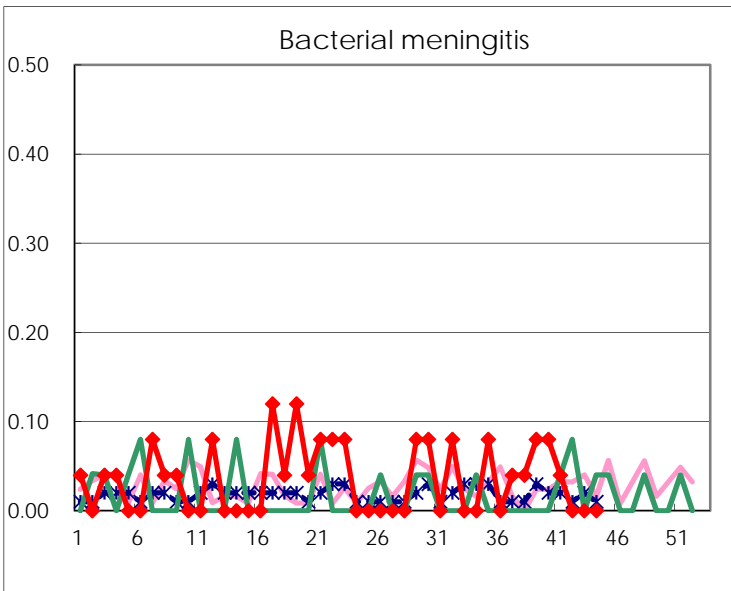
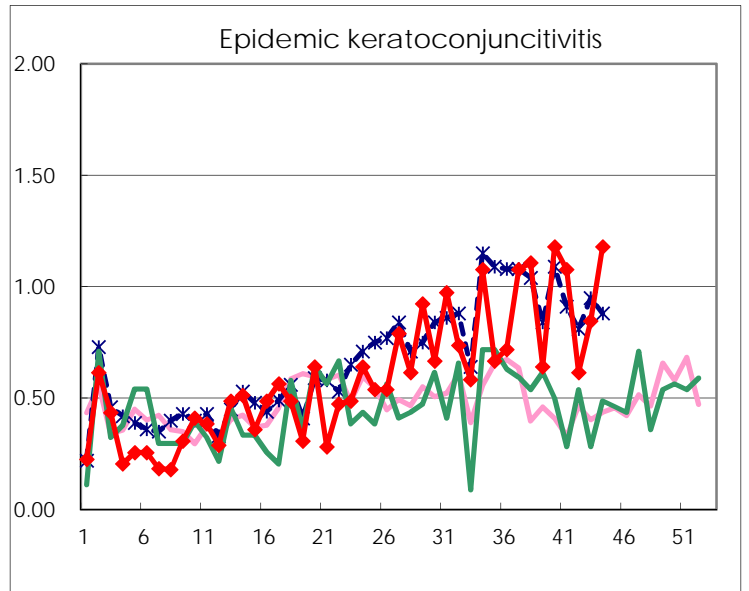
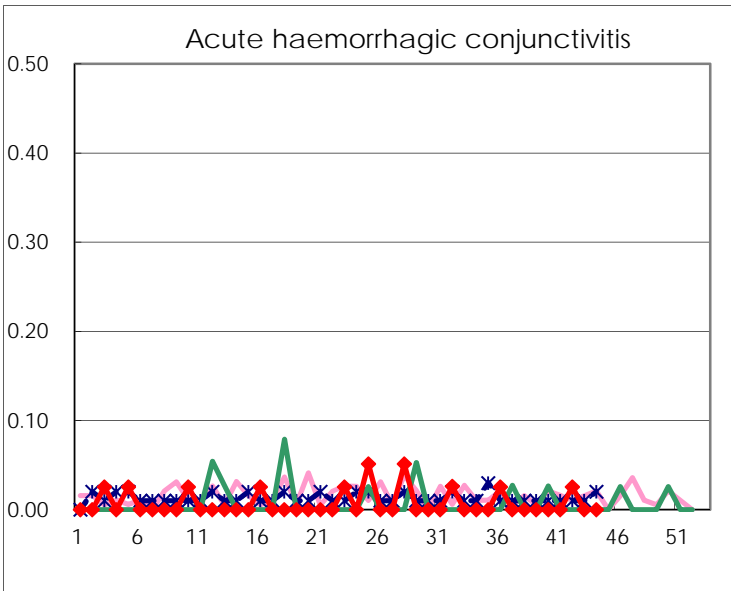
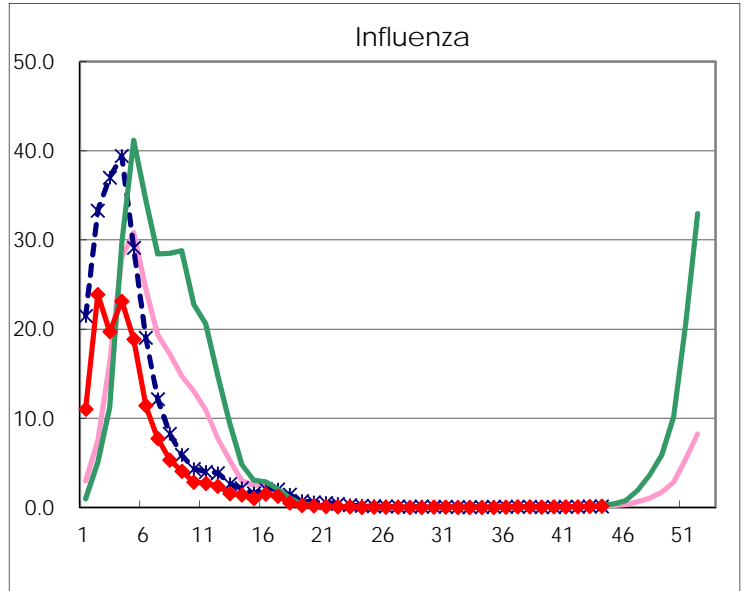
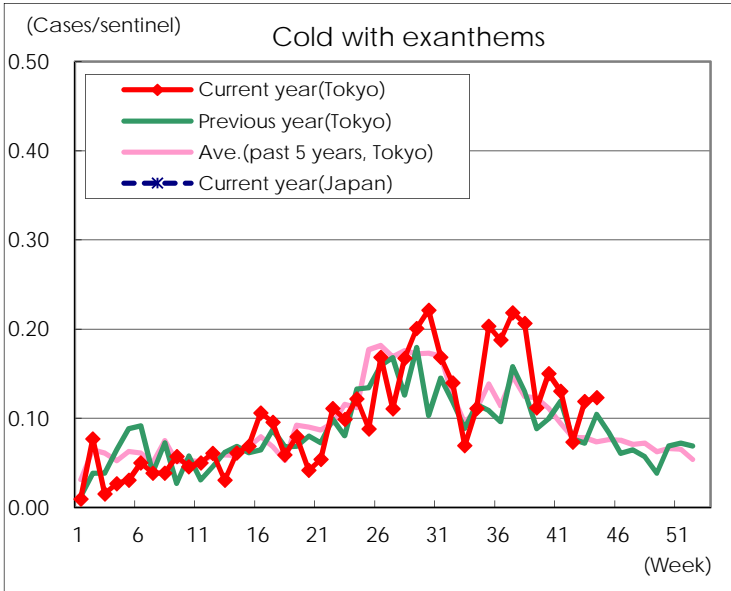
Diseases	Tokyo				
	41st	42nd	43rd	44th	/sentinel
Respiratory syncytial virus infection	398	363	384	357	1.37
Pharyngoconjunctival fever	87	58	66	69	0.27
Group A streptococcal pharyngitis	438	418	539	507	1.95
Infectious gastroenteritis	917	867	1,189	1,356	5.22
Chickenpox	77	76	107	101	0.39
Hand, foot, and mouth disease	398	215	180	141	0.54
Erythema infectiosum	75	71	81	117	0.45
Exanthem subitum	140	135	146	157	0.60
Pertussis	8	5	10	7	0.03
Herpangina	59	36	48	27	0.10
Mumps	130	124	156	143	0.55
Kawasaki disease	3	2	1	3	0.01
Cold with exanthems	34	19	31	32	0.12
Influenza	36	32	49	59	0.14
Acute hemorrhagic conjunctivitis		1			
Epidemic keratoconjunctivitis	42	24	33	46	1.18
Bacterial meningitis	1				
Aseptic meningitis	3	2	1	2	0.08
Mycoplasma pneumonia	43	22	48	30	1.20
Chlamydial pneumonia (excluding psittacosis)	3			2	0.08
Infectious gastroenteritis (only by Rotavirus)	1			1	0.04
Influenza-Associated Hospitalizations					

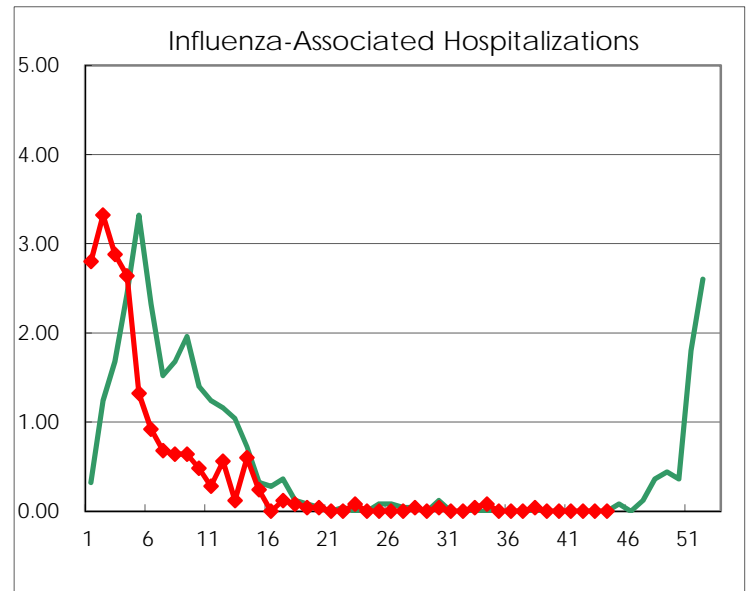
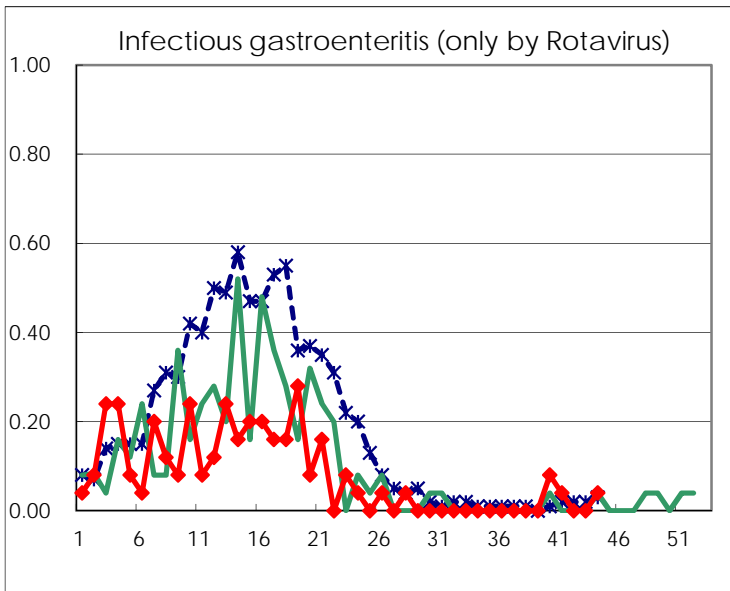
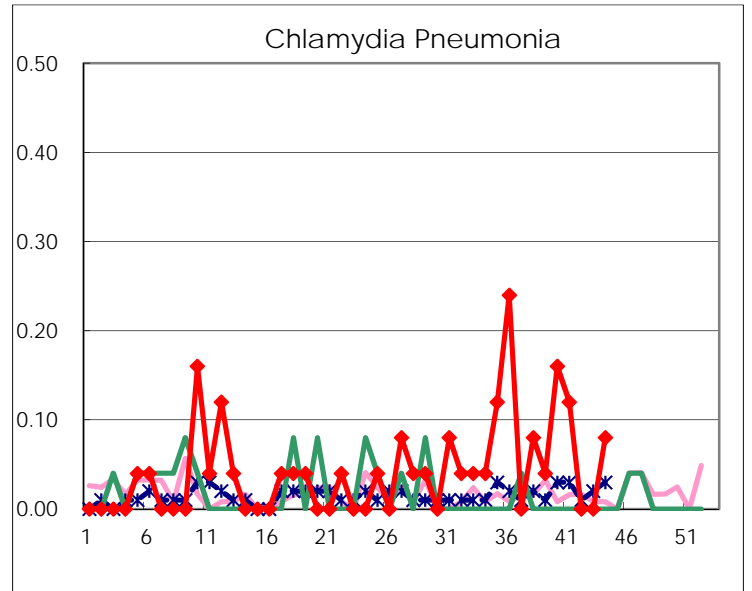
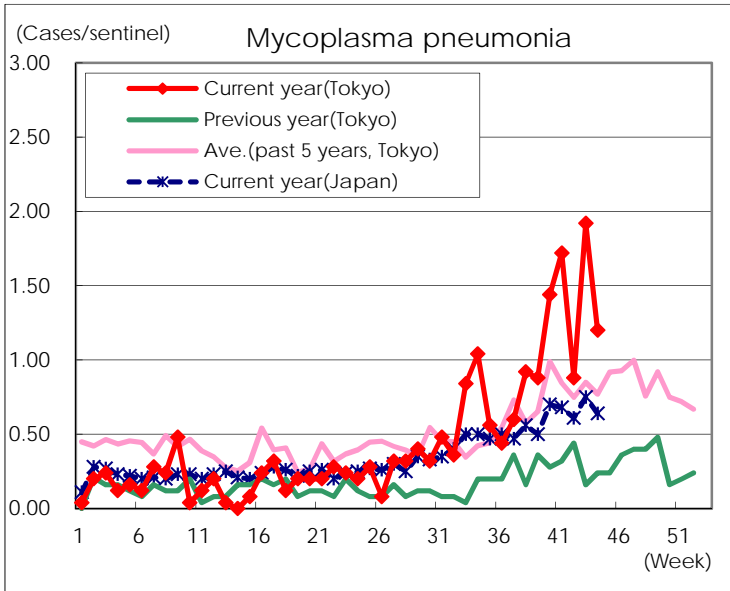
( Blank means 0. )

# Disease Trend Graph (weekly reported cases per sentinel in comparison)









Number of sentinel facilities for weekly reporting		
Types of sentinels	Number of sentinels	Sentinels having reported
Pediatric	264	260
Influenza	419	410
Ophthalmic	39	39
Specially-designated	25	25