

12 November 2015 / Number 45

Surveillance System in Tokyo, Japan

The infectious diseases which all physicians must report

All physicians must report to health centers the incidence of the diseases which are shown at page one. Health centers electronically report the individual cases to Tokyo Metropolitan Infectious Disease Surveillance Center.

The infectious diseases required to be reported by the sentinels

The numbers of patients who visit the sentinel clinics or hospitals during a week are reported to health centers in Tokyo. And they electronically report the numbers to Tokyo Metropolitan Infectious Disease Surveillance Center. We have about 500 sentinel clinics and hospitals in Tokyo.

Tokyo Metropolitan Institute of Public Health

TEL:81-3-3363-3213 FAX:81-3-5332-7365

e-mail:www@tokyo-eiken.go.jp

URL:idsc.tokyo-eiken.go.jp/

Number of patients with the diseases which all physicians must report

Category	Diseases	Tokyo				Japan		
		42nd	43rd	44th	45th	Cum 2015	45th	Cum 2015
I	Ebola hemorrhagic fever							
	Crimean-Congo hemorrhagic fever							
	Smallpox							
	South American hemorrhagic fever							
	Plague							
	Marburg disease							
	Lassa fever							
II	Acute poliomyelitis							
	Tuberculosis	53	59	63	43	3,078	283	20,438
	Diphtheria							
	Severe Acute Respiratory Syndrome(SARS)							
	Middle East Respiratory Syndrome (MERS)							
	Avian influenza H5N1							
	Avian influenza H7N9							
III	Cholera				1	1	1	5
	Shigellosis		2			49	2	142
	Enterohemorrhagic Escherichia coli infection	6	5	4	2	316	36	3,350
	Typhoid fever					12		31
	Paratyphoid fever		1			8		29
IV	Hepatitis E		2		1	23	5	163
	West Nile fever							
	Hepatitis A				1	38	4	219
	Echinococcosis					1		13
	Yellow fever							
	Psittacosis							5
	Omsk hemorrhagic fever							
	Relapsing fever							3
	Kyasanur forest disease							
	Q fever							
	Rabies							
	Coccidioidomycosis			1		2		3
	Monkeypox							
	Severe Fever with Thrombocytopenia Syndrome						3	57
	Hemorrhagic fever with renal syndrome							
	Western equine encephalitis							
	Tick-borne encephalitis							
	Anthrax							
	Chikungunya fever					6	1	15
	Scrub typhus(Tsutsugamushi disease)				1	5	23	127
	Dengue fever		1	2	1	76	4	258
	Eastern equine encephalitis							
	Avian influenza (excluding H5N1 and H7N9)							
	Nipah virus infection							
	Japanese spotted fever					1		191
	Japanese encephalitis							2
	Hantavirus pulmonary syndrome							
	Herpes B virus infection							
	Glanders							
	Brucellosis					2		4
	Venezuelan equine encephalitis							
	Hendra virus infection							
Epidemic typhus								
Botulism							1	
Malaria	1				16		39	
Tularemia							2	
Lyme disease					1		8	
Lyssavirus infection(excluding rabies)								
Rift valley fever								
Melioidosis					1		1	
Legionellosis	2	3	4	3	132	19	1,369	
Leptospirosis		1		1	10	1	25	
Rocky mountain spotted fever								

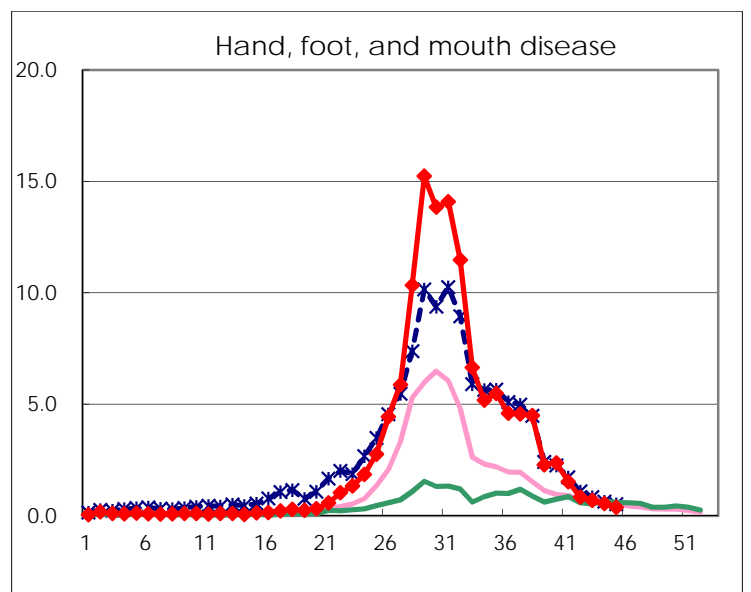
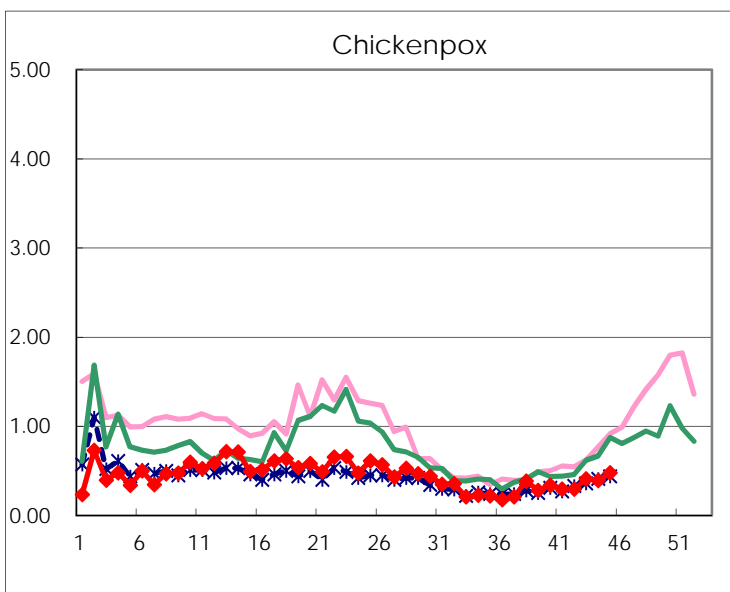
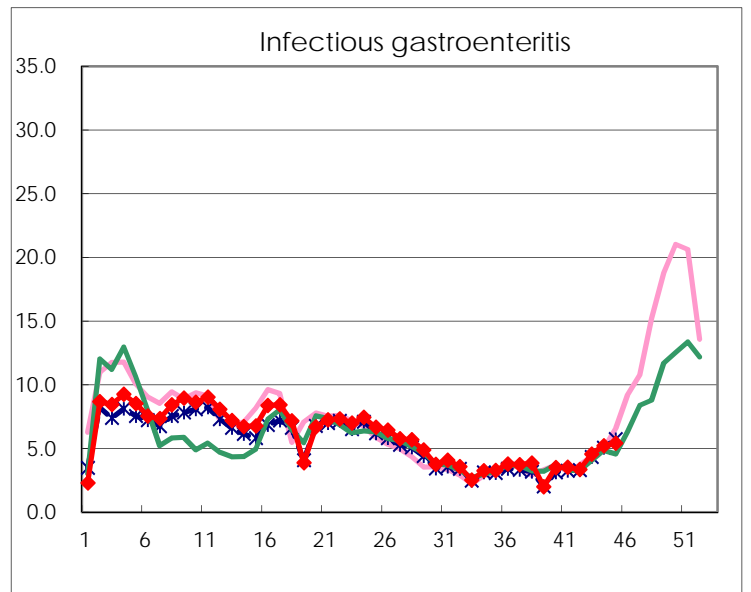
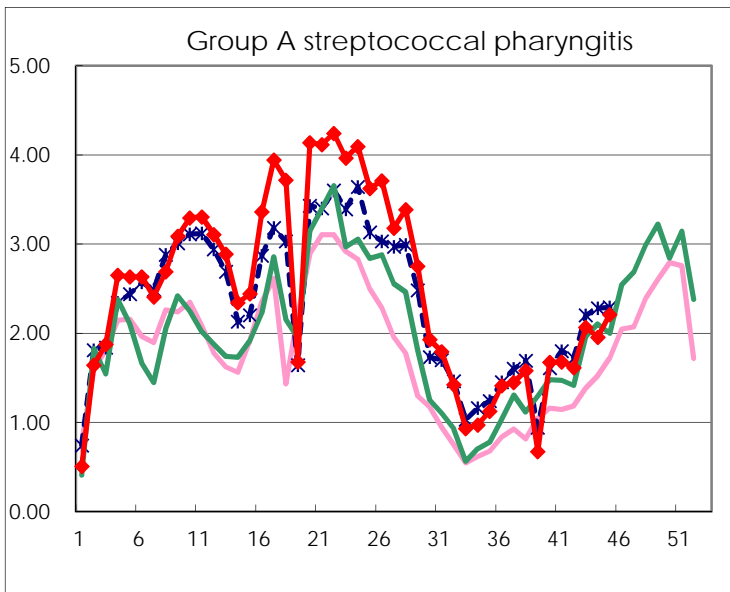
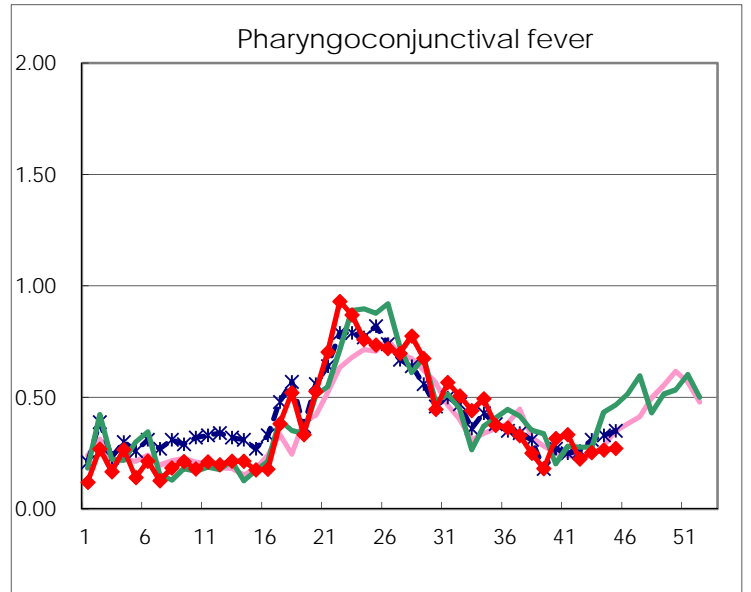
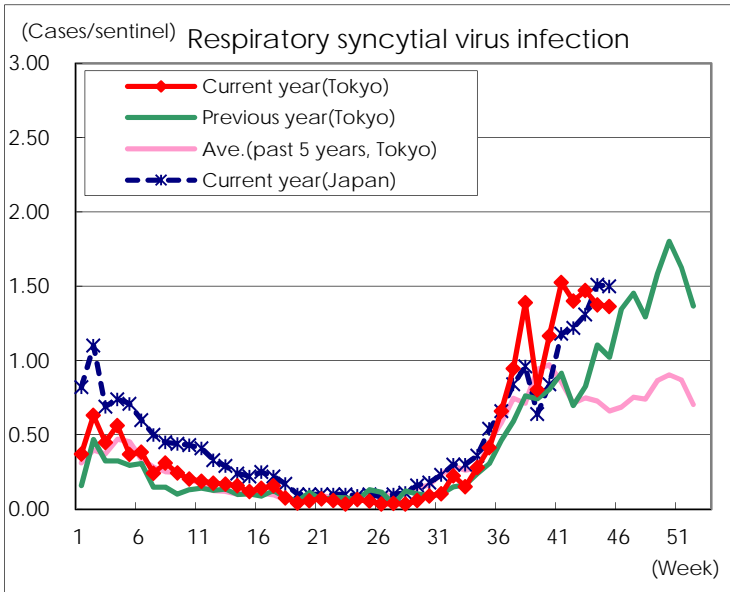
Category	Diseases	Tokyo					Japan	
		42nd	43rd	44th	45th	Cum 2015	45th	Cum 2015
V	Amebiasis	4	3	5	3	164	12	934
	Viral hepatitis(excluding hepatitis A and E)		2		2	43	4	212
	CRE infection	4	2	2	1	198	21	1,422
	Acute encephalitis(excluding JE and WNE)		3	1	1	42	4	430
	Cryptosporidiosis					3		13
	Creutzfeldt-Jakob disease	1				22	1	152
	Severe invasive streptococcal infections(TSLS)		2	1	3	55	3	365
	Acquired immunodeficiency syndrome (AIDS)	5	11	5	6	362	12	1,196
	Giardiasis		1			17	1	68
	Invasive <i>Haemophilus influenzae</i> disease		1		3	24	3	201
	Invasive meningococcal disease					7		26
	Invasive pneumococcal disease	6	2	7	8	260	39	1,907
	Varicella (limited to hospitalized case)	2		1		44	3	251
	Congenital rubella syndrome							
	Syphilis	21	18	30	21	871	29	2,155
	Disseminated cryptococcosis				1	10		95
	Tetanus					1		98
	Vancomycin-resistant <i>S. aureus</i> infection							
	Vancomycin-resistant Enterococcus infection					2		52
	Rubella	2				31		146
Measles					9	3	33	
MDRA infection			1		7		28	

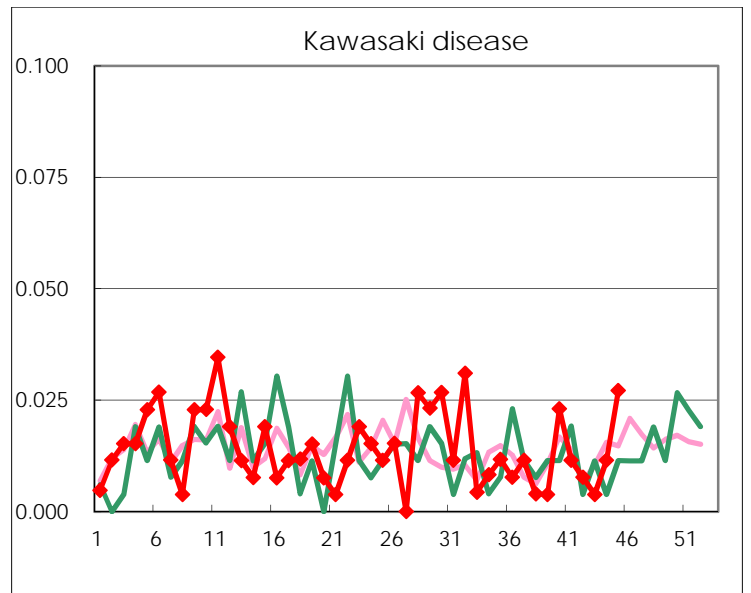
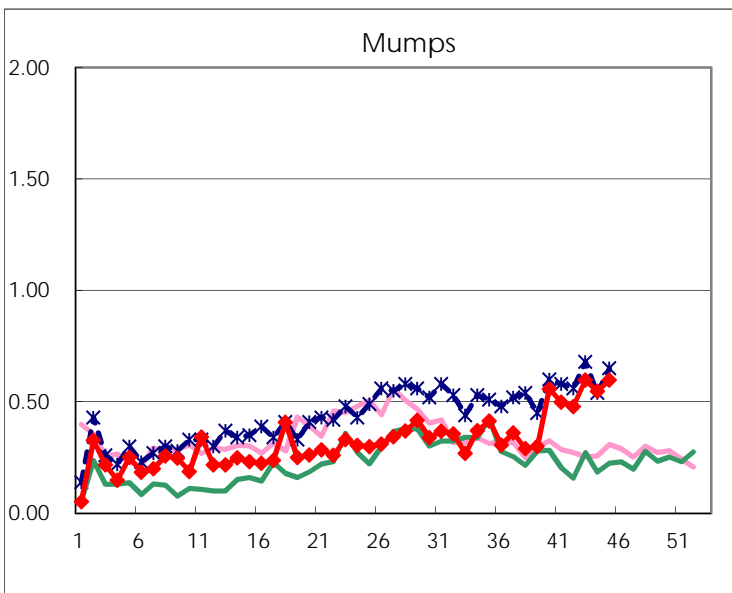
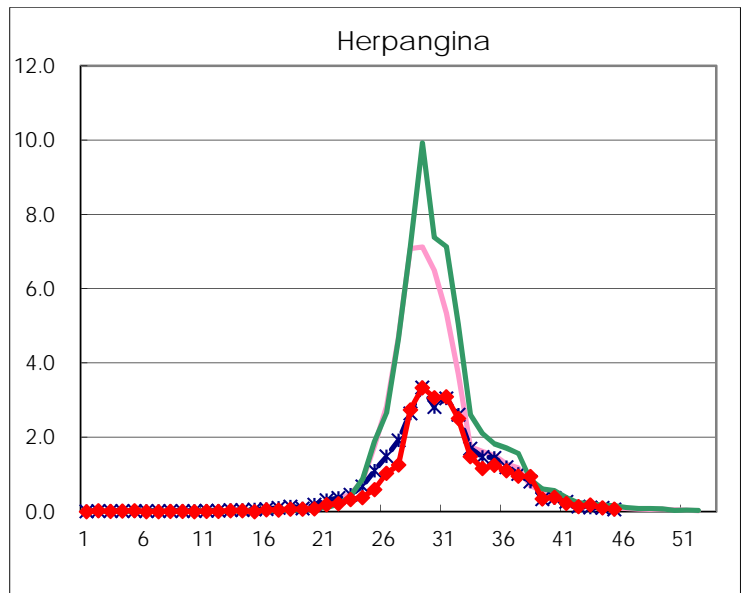
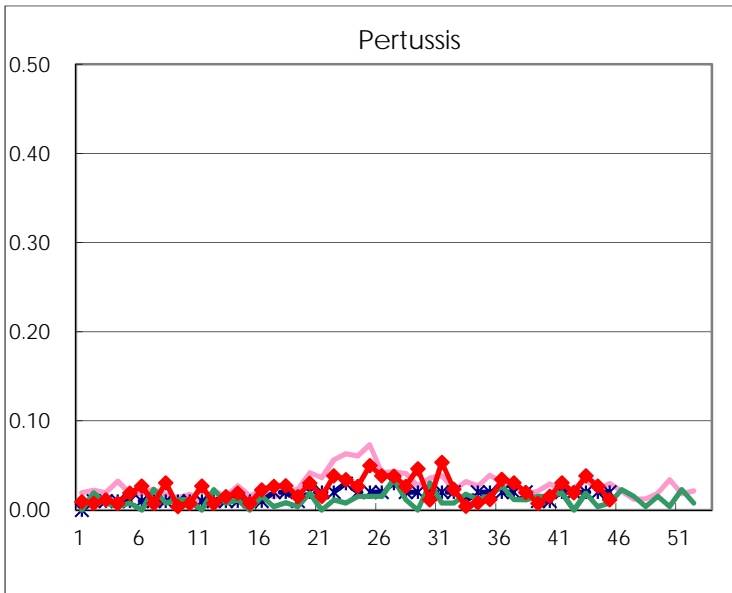
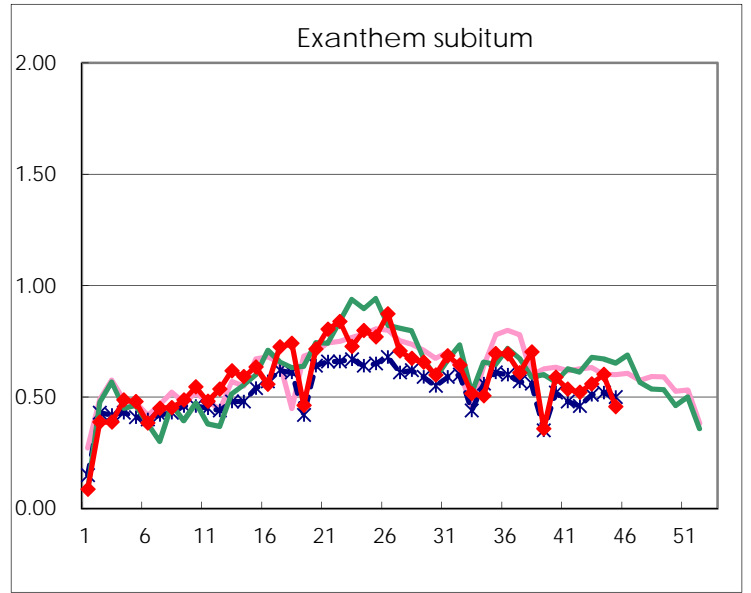
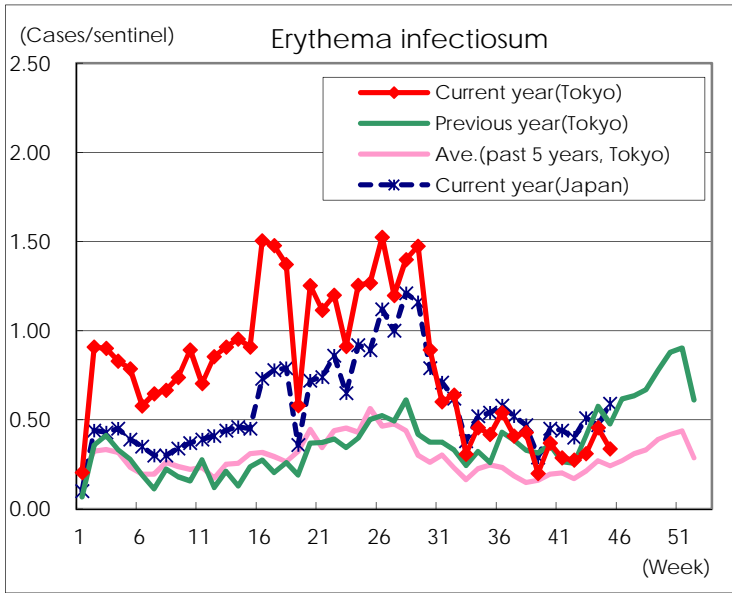
Number of patients with the diseases to be reported
by the designated clinics and hospitals

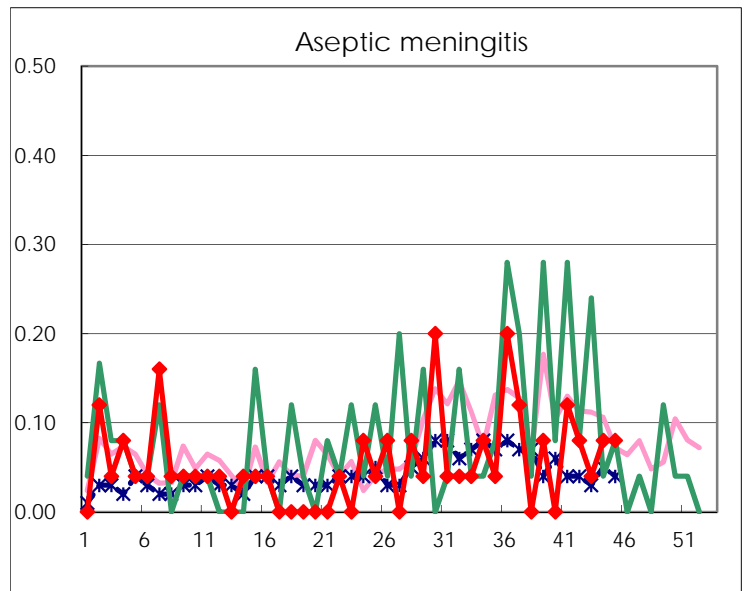
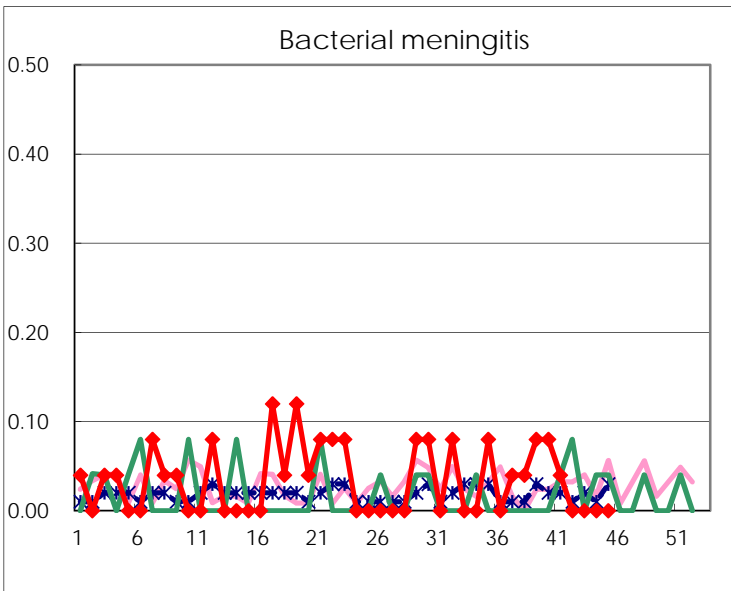
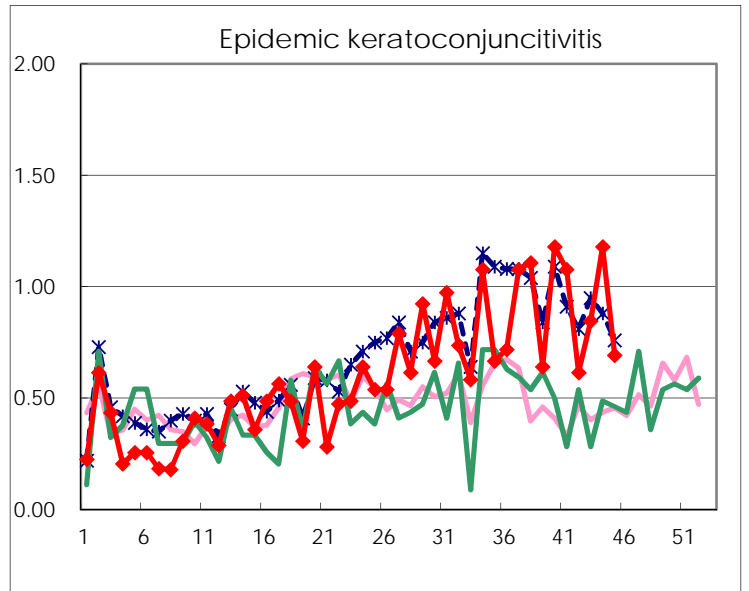
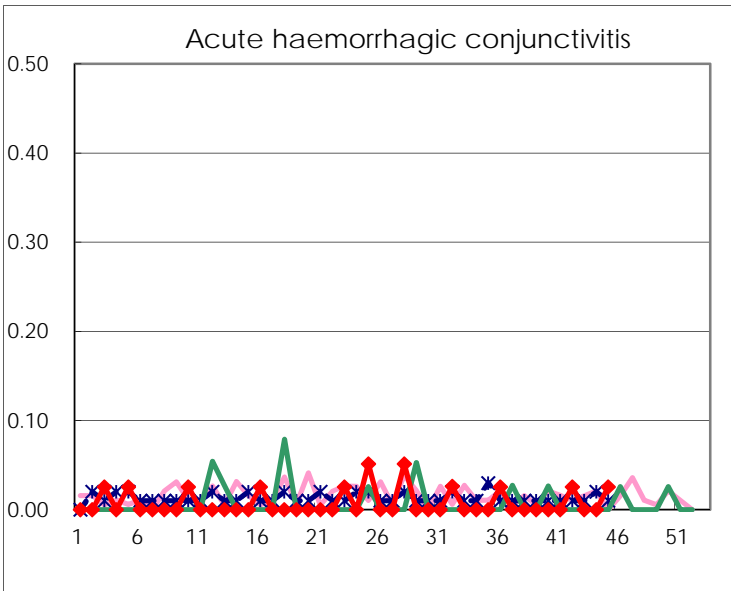
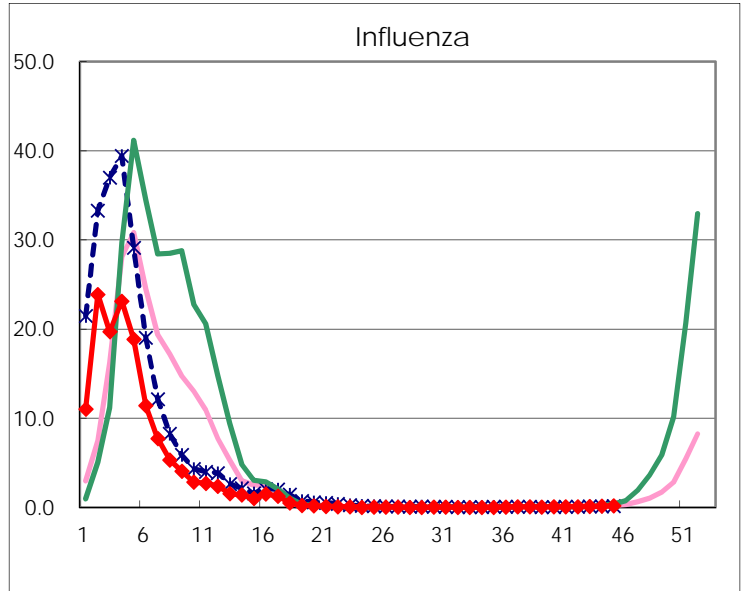
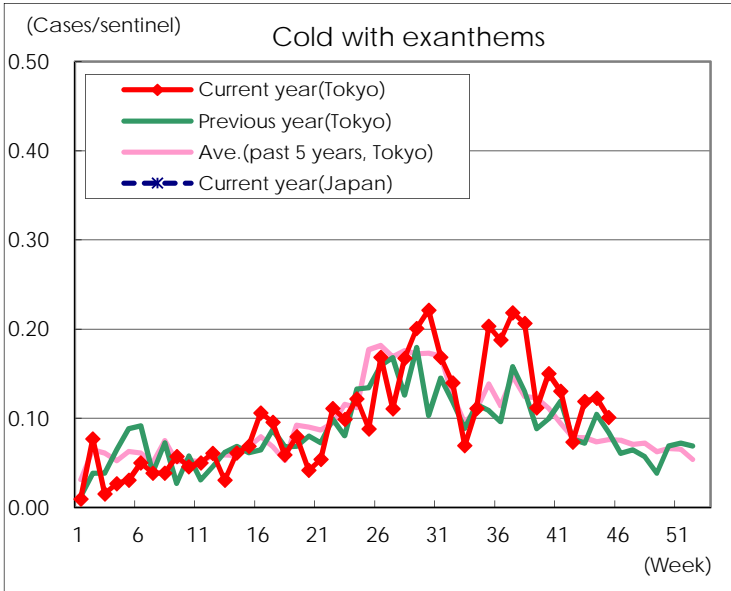
Diseases	Tokyo				
	42nd	43rd	44th	45th	/sentinel
Respiratory syncytial virus infection	363	384	359	352	1.36
Pharyngoconjunctival fever	58	66	69	70	0.27
Group A streptococcal pharyngitis	418	539	510	570	2.21
Infectious gastroenteritis	867	1,189	1,359	1,394	5.40
Chickenpox	76	107	102	123	0.48
Hand, foot, and mouth disease	215	180	141	98	0.38
Erythema infectiosum	71	81	119	87	0.34
Exanthem subitum	135	146	157	118	0.46
Pertussis	5	10	7	3	0.01
Herpangina	36	48	27	18	0.07
Mumps	124	156	143	154	0.60
Kawasaki disease	2	1	3	7	0.03
Cold with exanthems	19	31	32	26	0.10
Influenza	32	49	59	77	0.19
Acute hemorrhagic conjunctivitis	1			1	0.03
Epidemic keratoconjunctivitis	24	33	46	27	0.69
Bacterial meningitis					
Aseptic meningitis	2	1	2	2	0.08
Mycoplasma pneumonia	22	48	31	25	1.00
Chlamydial pneumonia (excluding psittacosis)			2		
Infectious gastroenteritis (only by Rotavirus)			1	2	0.08
Influenza-Associated Hospitalizations					

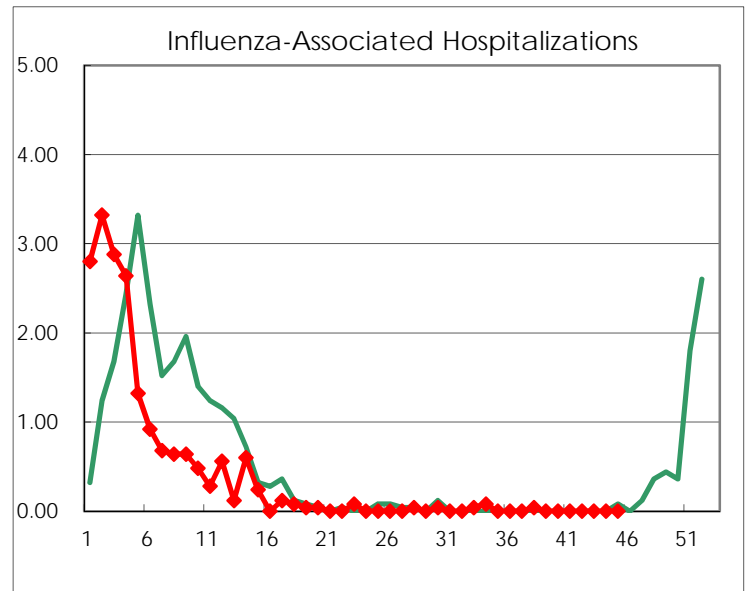
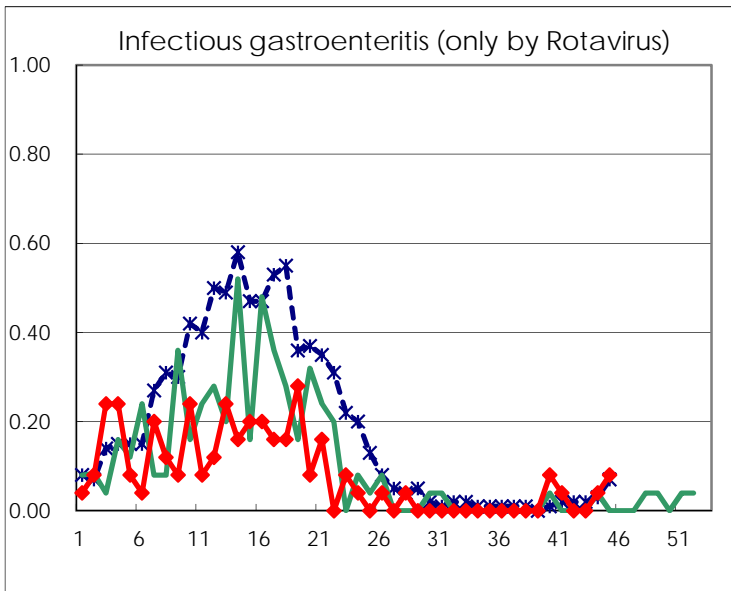
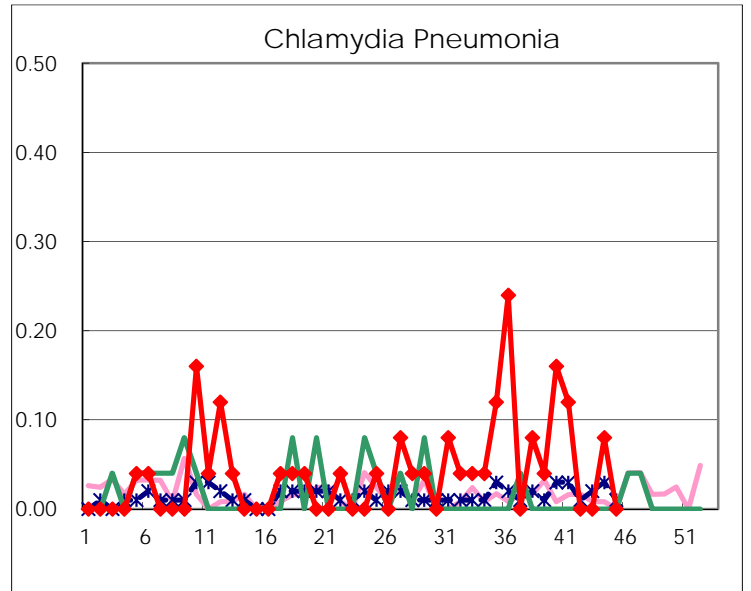
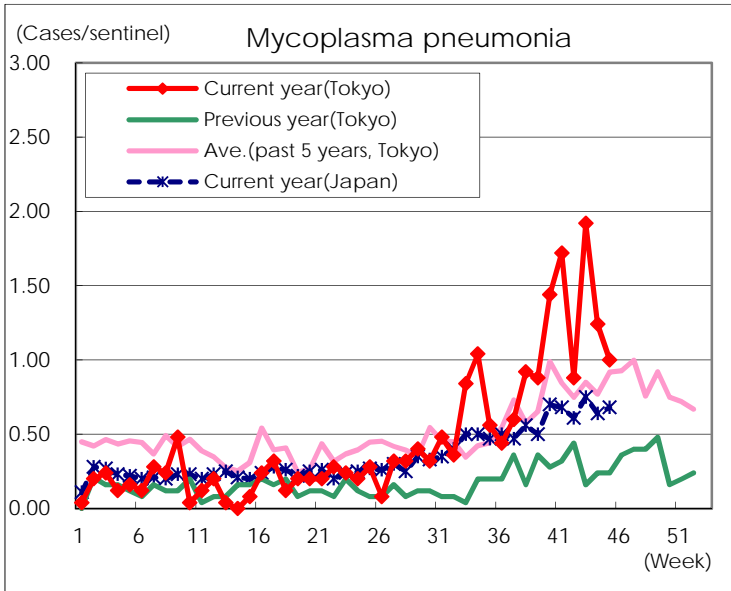
(Blank means 0.)

Disease Trend Graph (weekly reported cases per sentinel in comparison)









Number of sentinel facilities for weekly reporting		
Types of sentinels	Number of sentinels	Sentinels having reported
Pediatric	264	258
Influenza	419	406
Ophthalmic	39	39
Specially-designated	25	25