

19 November 2015 / Number 46

Surveillance System in Tokyo, Japan

The infectious diseases which all physicians must report

All physicians must report to health centers the incidence of the diseases which are shown at page one. Health centers electronically report the individual cases to Tokyo Metropolitan Infectious Disease Surveillance Center.

The infectious diseases required to be reported by the sentinels

The numbers of patients who visit the sentinel clinics or hospitals during a week are reported to health centers in Tokyo. And they electronically report the numbers to Tokyo Metropolitan Infectious Disease Surveillance Center. We have about 500 sentinel clinics and hospitals in Tokyo.

Tokyo Metropolitan Institute of Public Health

TEL:81-3-3363-3213 FAX:81-3-5332-7365

e-mail:www@tokyo-eiken.go.jp

URL:idsc.tokyo-eiken.go.jp/

Number of patients with the diseases which all physicians must report

Category	Diseases	Tokyo				Japan		
		43rd	44th	45th	46th	Cum 2015	46th	Cum 2015
I	Ebola hemorrhagic fever							
	Crimean-Congo hemorrhagic fever							
	Smallpox							
	South American hemorrhagic fever							
	Plague							
	Marburg disease							
	Lassa fever							
II	Acute poliomyelitis							
	Tuberculosis	59	64	44	61	3,142	372	20,939
	Diphtheria							
	Severe Acute Respiratory Syndrome(SARS)							
	Middle East Respiratory Syndrome (MERS)							
	Avian influenza H5N1							
	Avian influenza H7N9							
III	Cholera			1		1	1	6
	Shigellosis	2			2	51	4	146
	Enterohemorrhagic Escherichia coli infection	5	4	2	3	319	35	3,392
	Typhoid fever					12	1	32
	Paratyphoid fever	1				8		29
IV	Hepatitis E	2		1	5	28	3	170
	West Nile fever							
	Hepatitis A			1		38	1	221
	Echinococcosis					1		13
	Yellow fever							
	Psittacosis							5
	Omsk hemorrhagic fever							
	Relapsing fever							3
	Kyasanur forest disease							
	Q fever							
	Rabies							
	Coccidioidomycosis		1			2		3
	Monkeypox							
	Severe Fever with Thrombocytopenia Syndrome							57
	Hemorrhagic fever with renal syndrome							
	Western equine encephalitis							
	Tick-borne encephalitis							
	Anthrax							
	Chikungunya fever					6	1	16
	Scrub typhus(Tsutsugamushi disease)			2		6	43	182
	Dengue fever	1	2	1	5	81	4	262
	Eastern equine encephalitis							
	Avian influenza (excluding H5N1 and H7N9)							
	Nipah virus infection							
	Japanese spotted fever					1	4	196
	Japanese encephalitis							2
	Hantavirus pulmonary syndrome							
	Herpes B virus infection							
	Glanders							
	Brucellosis					2		4
	Venezuelan equine encephalitis							
	Hendra virus infection							
Epidemic typhus								
Botulism							1	
Malaria					16		39	
Tularemia							2	
Lyme disease					1		8	
Lyssavirus infection(excluding rabies)								
Rift valley fever								
Melioidosis					1		1	
Legionellosis	3	4	3	2	134	23	1,396	
Leptospirosis	1		1		10		25	
Rocky mountain spotted fever								

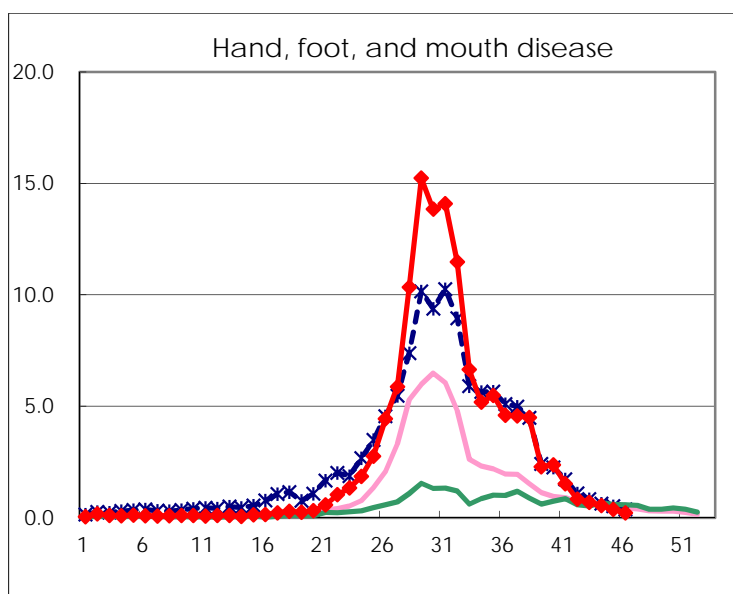
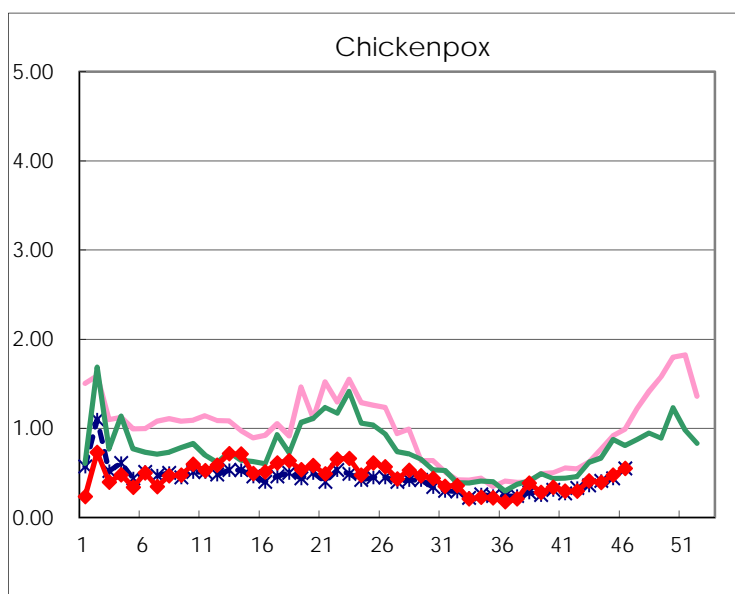
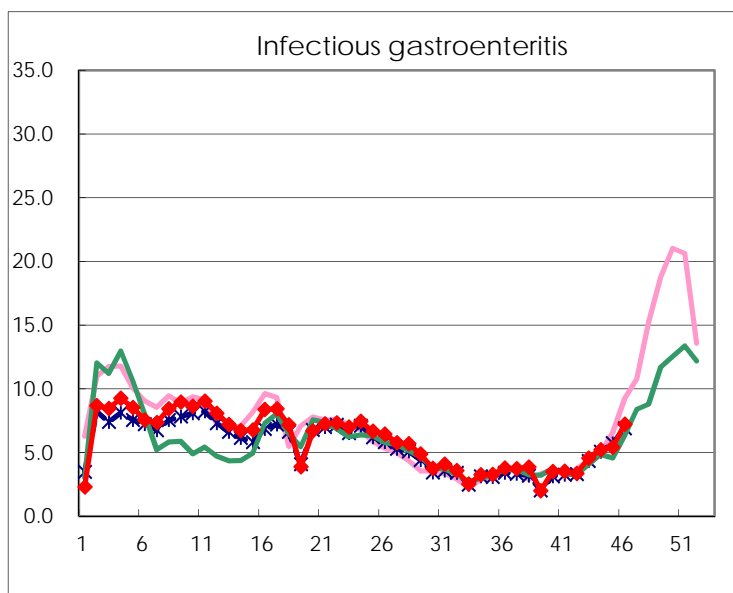
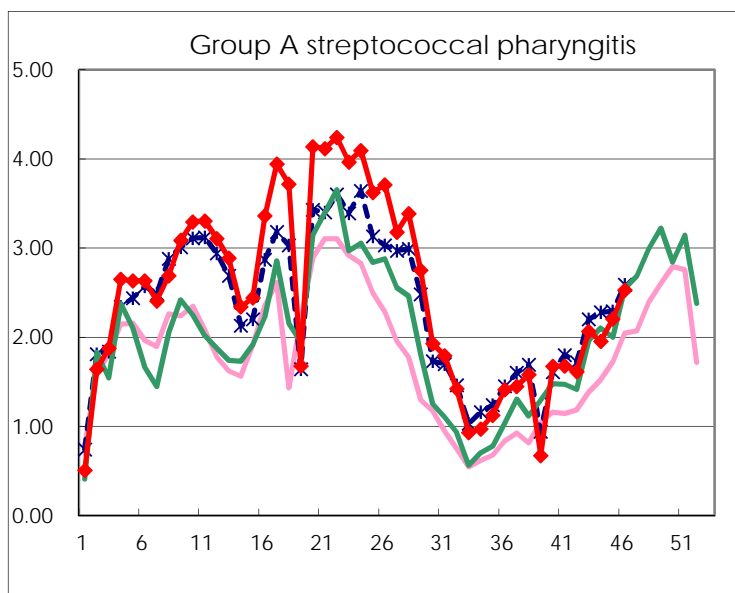
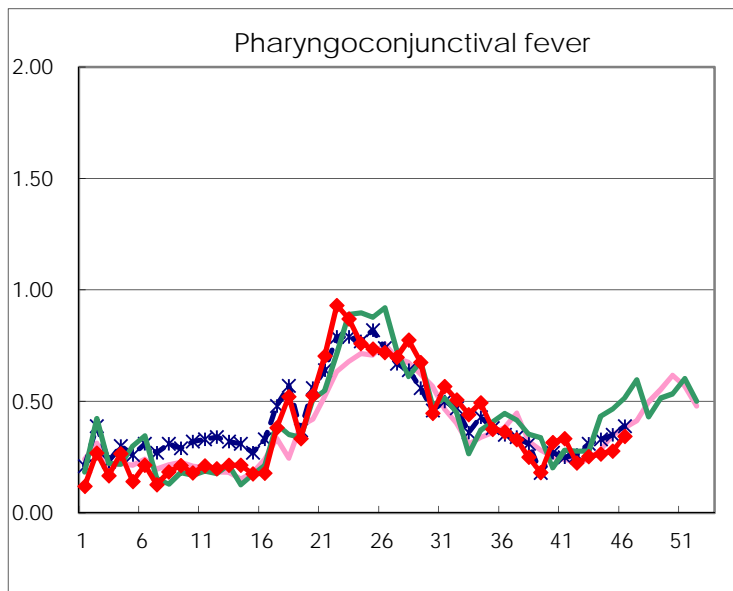
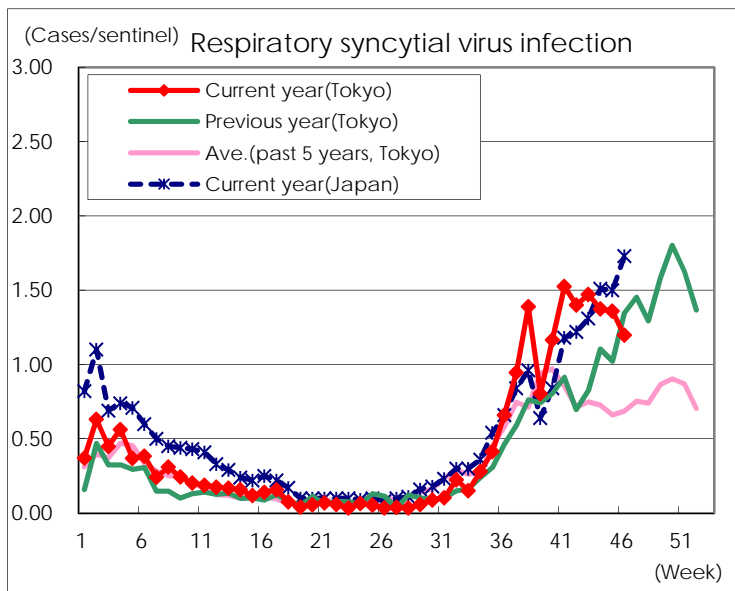
Category	Diseases	Tokyo					Japan	
		43rd	44th	45th	46th	Cum 2015	46th	Cum 2015
V	Amebiasis	3	5	3	5	169	11	952
	Viral hepatitis(excluding hepatitis A and E)	2		2	3	46	3	219
	CRE infection	2	2	2	4	203	21	1,451
	Acute encephalitis(excluding JE and WNE)	3	1	1	2	44	3	437
	Cryptosporidiosis					3		13
	Creutzfeldt-Jakob disease					22	2	157
	Severe invasive streptococcal infections(TSLS)	2	1	3	1	56	3	374
	Acquired immunodeficiency syndrome (AIDS)	11	5	6	9	371	10	1,225
	Giardiasis	1			1	18		71
	Invasive <i>Haemophilus influenzae</i> disease	1		3	1	25	6	207
	Invasive meningococcal disease					7		26
	Invasive pneumococcal disease	2	7	8	12	272	36	1,963
	Varicella (limited to hospitalized case)		1		1	45	2	258
	Congenital rubella syndrome							
	Syphilis	18	30	21	26	897	35	2,211
	Disseminated cryptococcosis			1		10	3	100
	Tetanus				1	2	3	102
	Vancomycin-resistant <i>S. aureus</i> infection							
	Vancomycin-resistant Enterococcus infection					2		52
	Rubella				1	32	2	151
Measles					9	1	33	
MDRA infection		1			7		28	

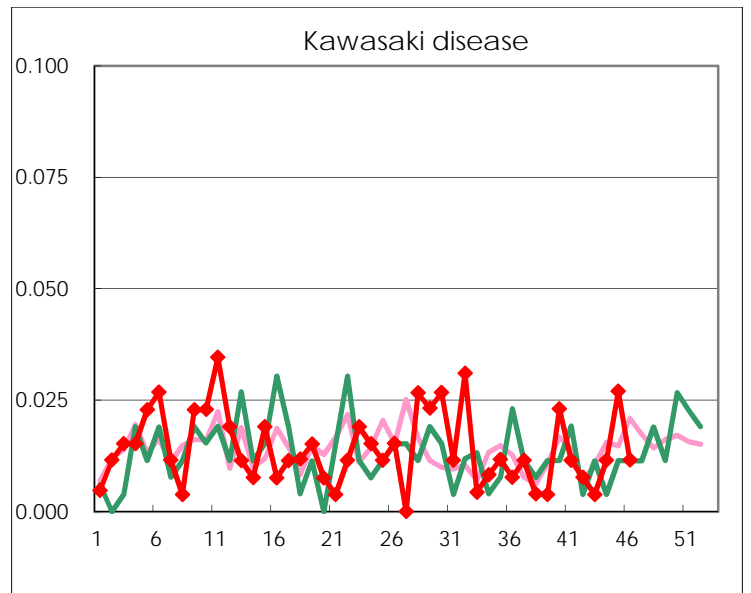
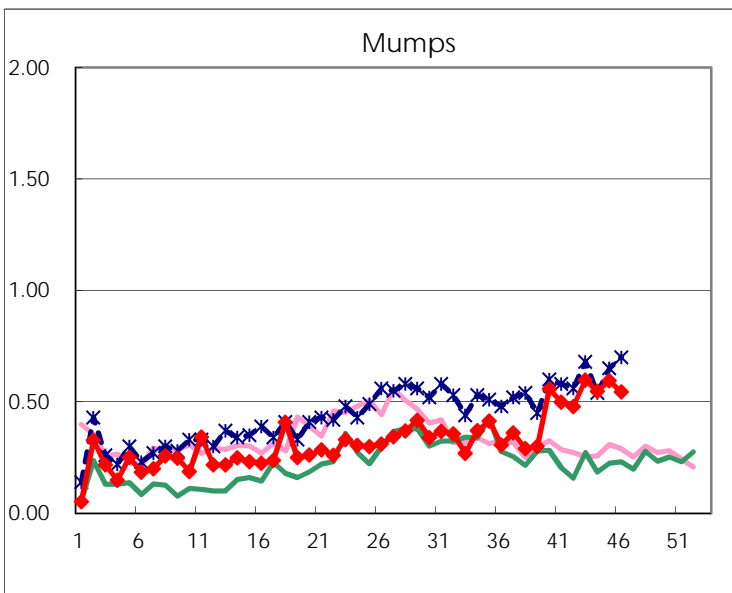
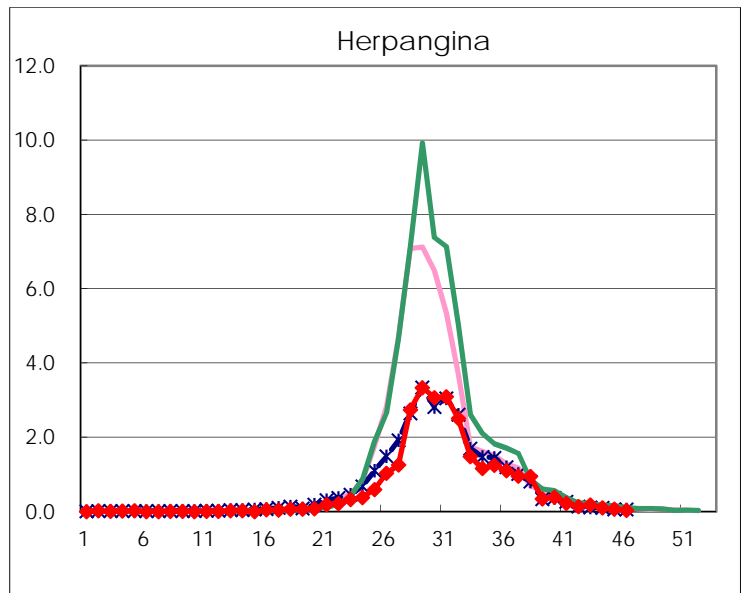
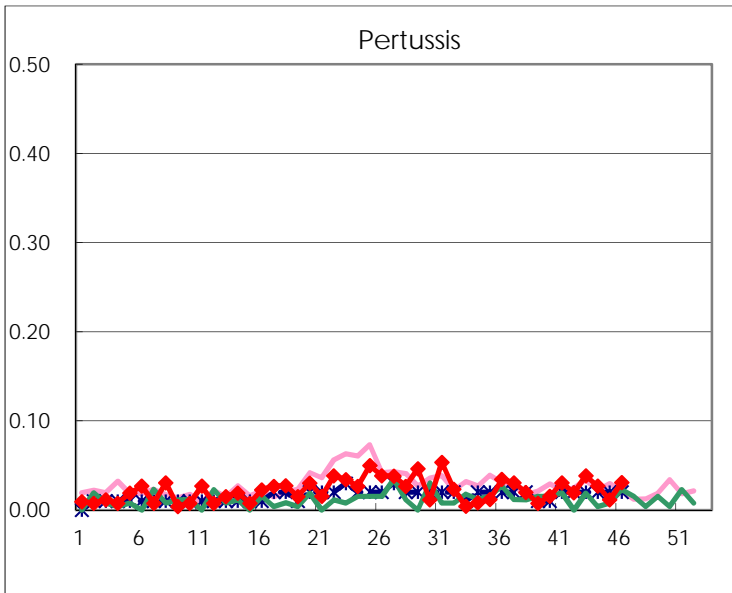
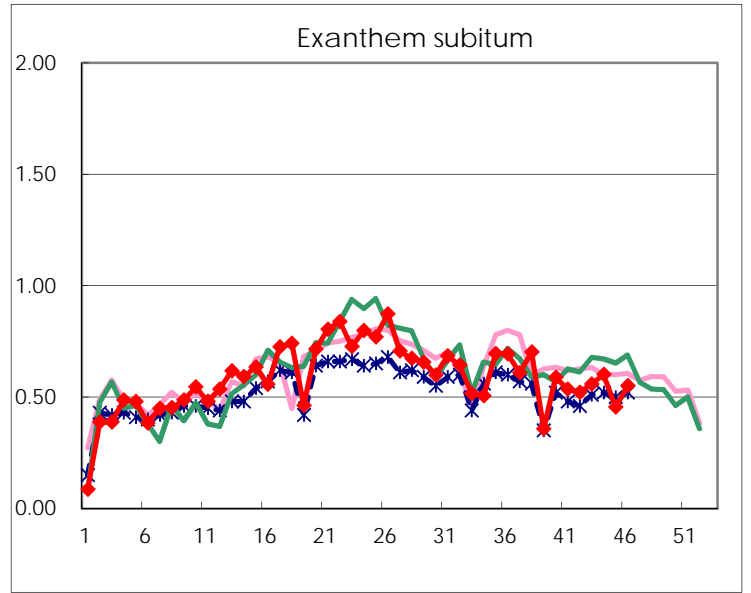
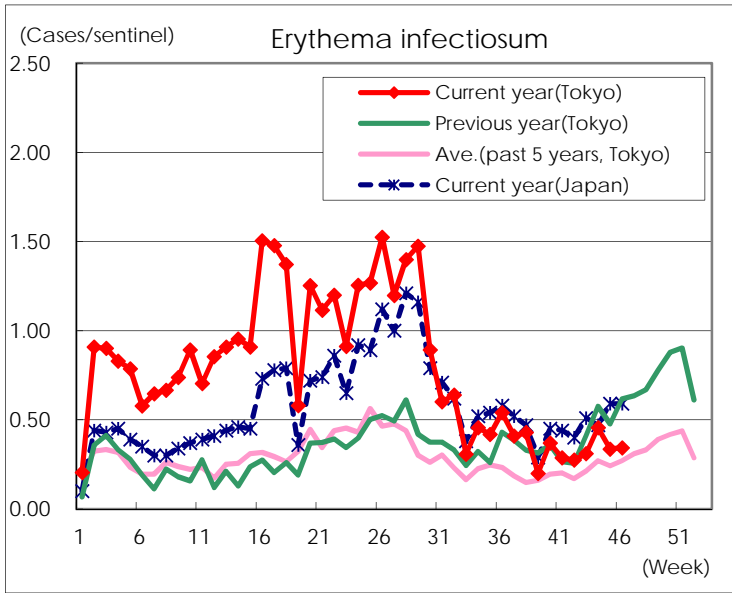
Number of patients with the diseases to be reported
by the designated clinics and hospitals

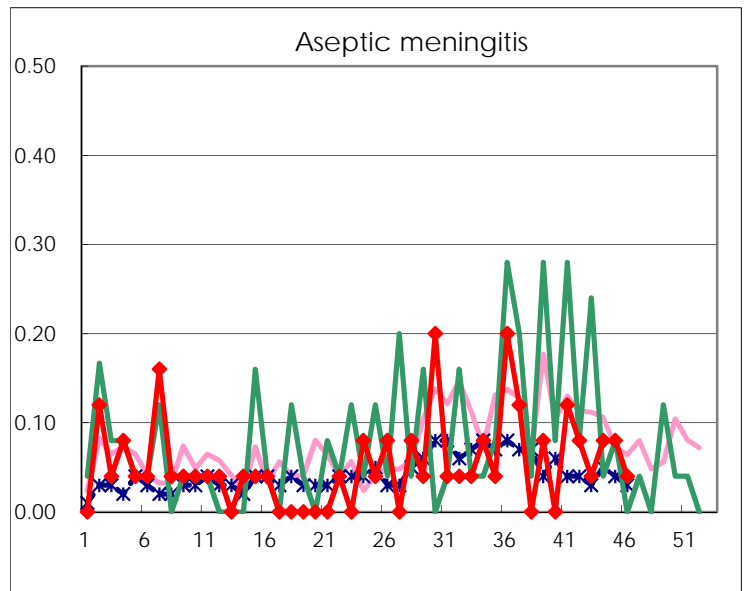
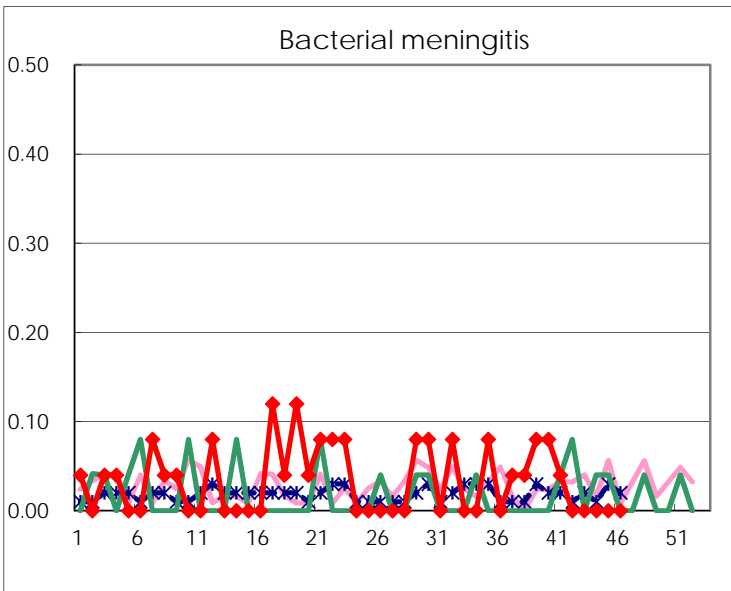
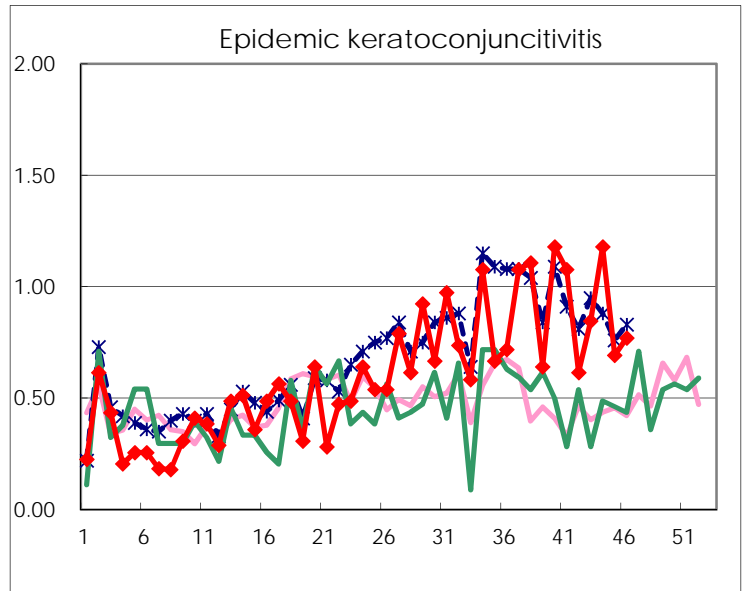
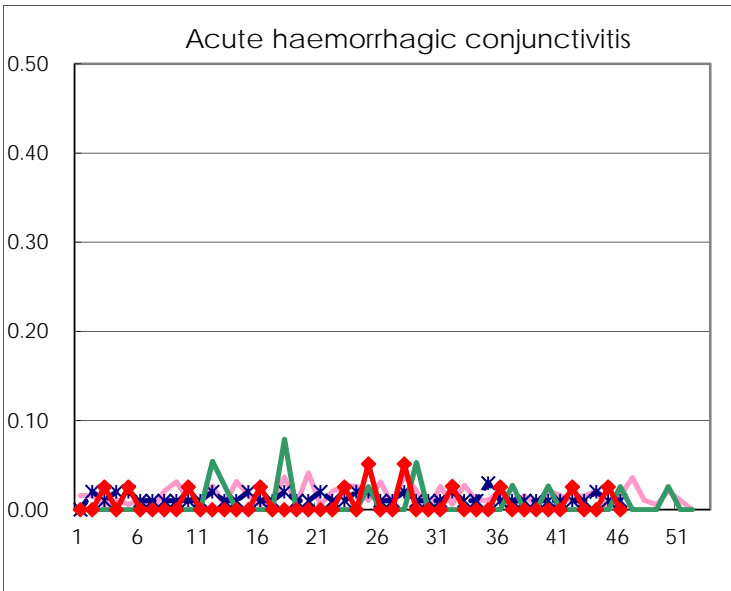
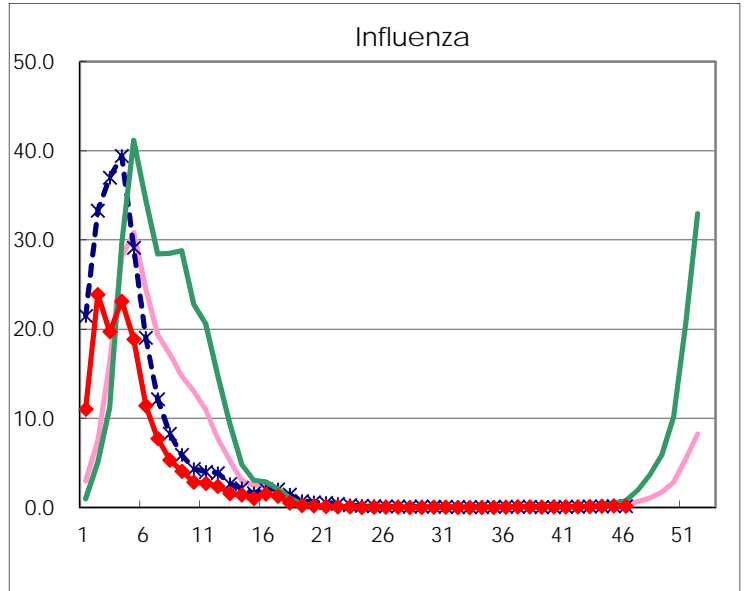
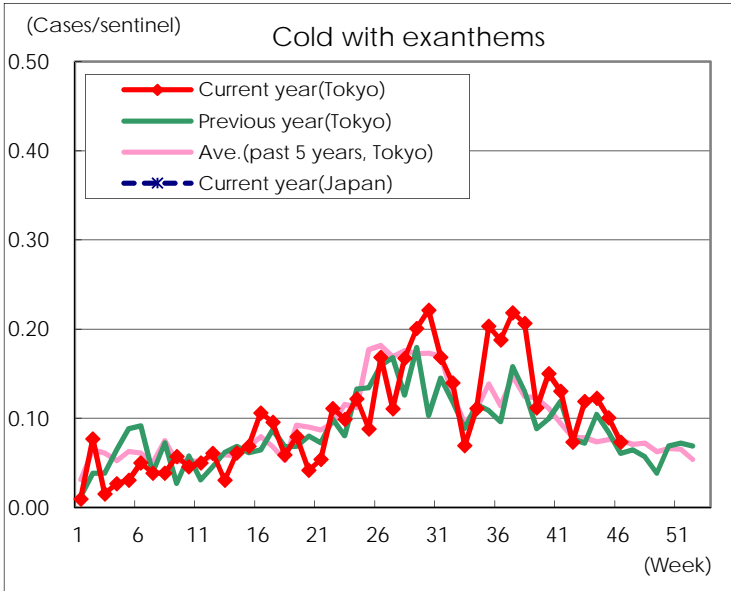
Diseases	Tokyo				
	43rd	44th	45th	46th	/sentinel
Respiratory syncytial virus infection	384	359	352	310	1.20
Pharyngoconjunctival fever	66	69	72	89	0.34
Group A streptococcal pharyngitis	539	510	571	655	2.53
Infectious gastroenteritis	1,189	1,359	1,397	1,871	7.22
Chickenpox	107	102	123	142	0.55
Hand, foot, and mouth disease	180	141	98	57	0.22
Erythema infectiosum	81	119	87	89	0.34
Exanthem subitum	146	157	118	143	0.55
Pertussis	10	7	3	8	0.03
Herpangina	48	27	18	10	0.04
Mumps	156	143	154	141	0.54
Kawasaki disease	1	3	7	3	0.01
Cold with exanthems	31	32	26	19	0.07
Influenza	49	59	77	61	0.15
Acute hemorrhagic conjunctivitis			1		
Epidemic keratoconjunctivitis	33	46	27	30	0.77
Bacterial meningitis					
Aseptic meningitis	1	2	2	1	0.04
Mycoplasma pneumonia	48	31	25	40	1.60
Chlamydial pneumonia (excluding psittacosis)		2		3	0.12
Infectious gastroenteritis (only by Rotavirus)		1	2	1	0.04
Influenza-Associated Hospitalizations				1	0.04

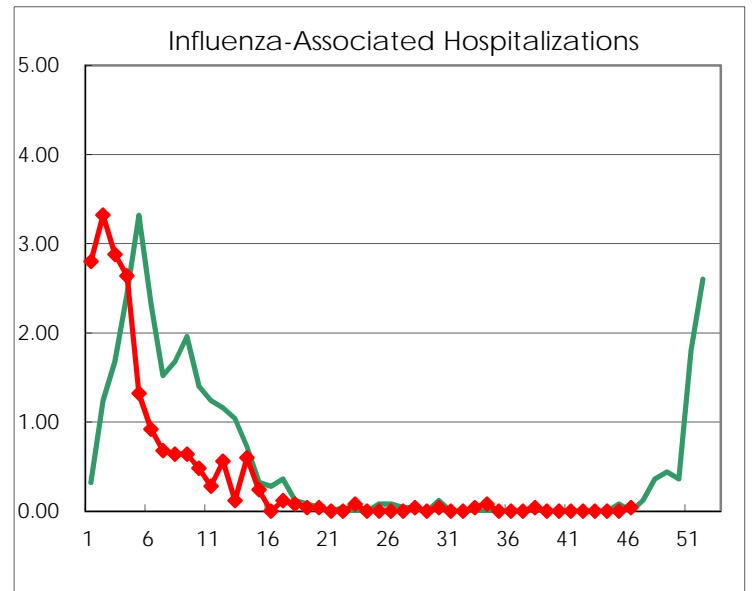
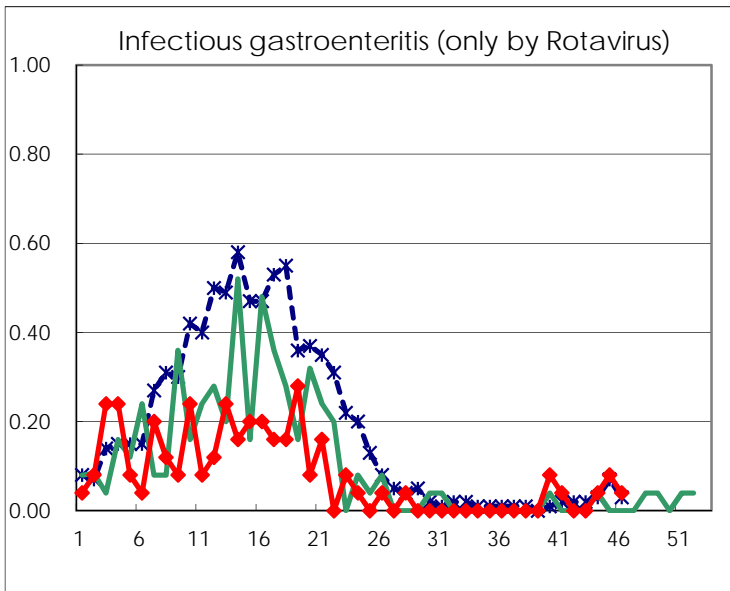
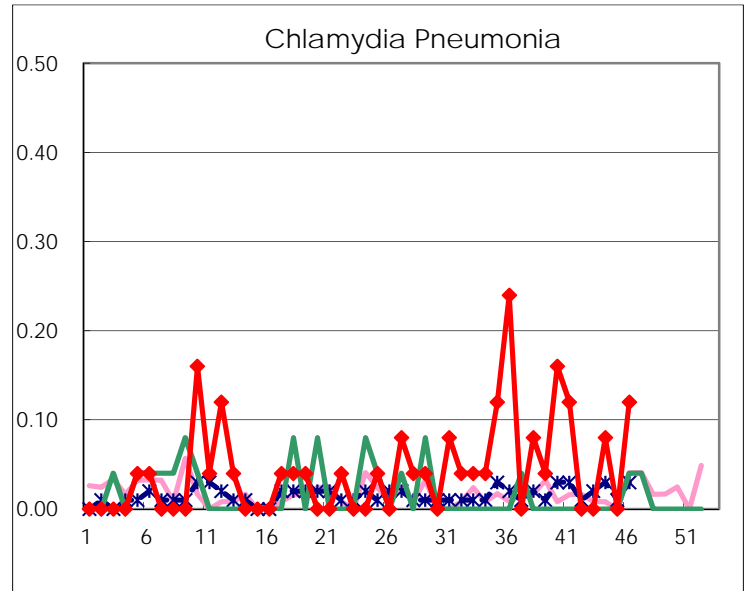
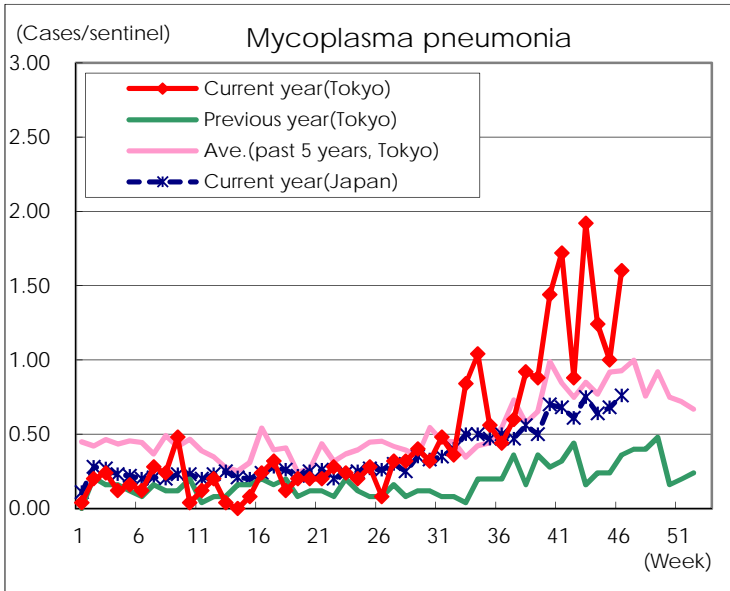
(Blank means 0.)

Disease Trend Graph (weekly reported cases per sentinel in comparison)









Number of sentinel facilities for weekly reporting		
Types of sentinels	Number of sentinels	Sentinels having reported
Pediatric	264	259
Influenza	419	411
Ophthalmic	39	39
Specially-designated	25	25