

26 November 2015 / Number 47

Surveillance System in Tokyo, Japan

The infectious diseases which all physicians must report

All physicians must report to health centers the incidence of the diseases which are shown at page one. Health centers electronically report the individual cases to Tokyo Metropolitan Infectious Disease Surveillance Center.

The infectious diseases required to be reported by the sentinels

The numbers of patients who visit the sentinel clinics or hospitals during a week are reported to health centers in Tokyo. And they electronically report the numbers to Tokyo Metropolitan Infectious Disease Surveillance Center. We have about 500 sentinel clinics and hospitals in Tokyo.

Tokyo Metropolitan Institute of Public Health

TEL:81-3-3363-3213 FAX:81-3-5332-7365

e-mail:www@tokyo-eiken.go.jp

URL:idsc.tokyo-eiken.go.jp/

Number of patients with the diseases which all physicians must report

Category	Diseases	Tokyo				Japan		
		44th	45th	46th	47th	Cum 2015	47th	Cum 2015
I	Ebola hemorrhagic fever							
	Crimean-Congo hemorrhagic fever							
	Smallpox							
	South American hemorrhagic fever							
	Plague							
	Marburg disease							
	Lassa fever							
II	Acute poliomyelitis							
	Tuberculosis	64	44	68	39	3,188	300	21,341
	Diphtheria							
	Severe Acute Respiratory Syndrome(SARS)							
	Middle East Respiratory Syndrome (MERS)							
	Avian influenza H5N1							
	Avian influenza H7N9							
III	Cholera		1			1		6
	Shigellosis			2	1	52	2	148
	Enterohemorrhagic Escherichia coli infection	4	2	3	3	322	20	3,418
	Typhoid fever					12		32
	Paratyphoid fever					8		29
IV	Hepatitis E		1	5	1	29	5	176
	West Nile fever							
	Hepatitis A		1			38	2	223
	Echinococcosis					1	1	15
	Yellow fever							
	Psittacosis							5
	Omsk hemorrhagic fever							
	Relapsing fever							3
	Kyasanur forest disease							
	Q fever							
	Rabies							
	Coccidioidomycosis	1				2		3
	Monkeypox							
	Severe Fever with Thrombocytopenia Syndrome							57
	Hemorrhagic fever with renal syndrome							
	Western equine encephalitis							
	Tick-borne encephalitis							
	Anthrax							
	Chikungunya fever					6		16
	Scrub typhus(Tsutsugamushi disease)		2		3	9	42	233
	Dengue fever	2	1	5	2	83	3	267
	Eastern equine encephalitis							
	Avian influenza (excluding H5N1 and H7N9)							
	Nipah virus infection							
	Japanese spotted fever					1		197
	Japanese encephalitis							2
	Hantavirus pulmonary syndrome							
	Herpes B virus infection							
	Glanders							
	Brucellosis					2		4
	Venezuelan equine encephalitis							
	Hendra virus infection							
Epidemic typhus								
Botulism							1	
Malaria					16		39	
Tularemia							2	
Lyme disease				1	2	2	10	
Lyssavirus infection(excluding rabies)								
Rift valley fever								
Melioidosis					1		1	
Legionellosis	4	3	3	2	137	23	1,424	
Leptospirosis		1			10		26	
	Rocky mountain spotted fever							

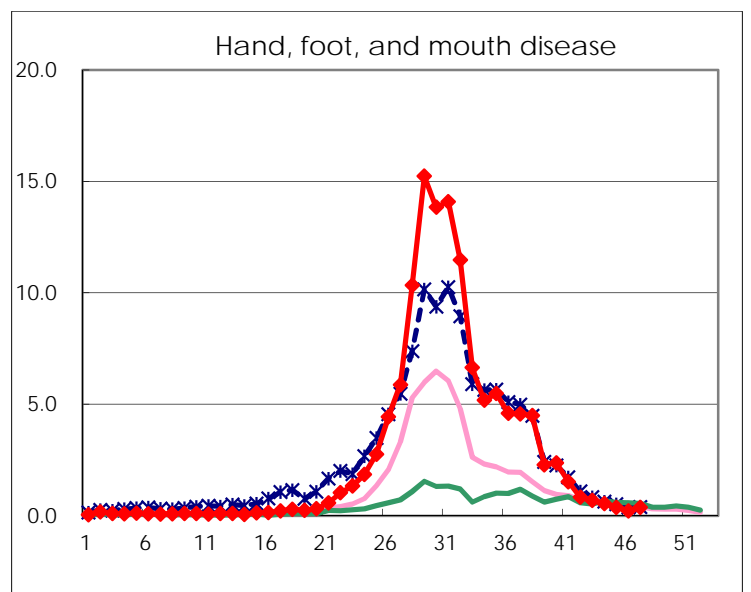
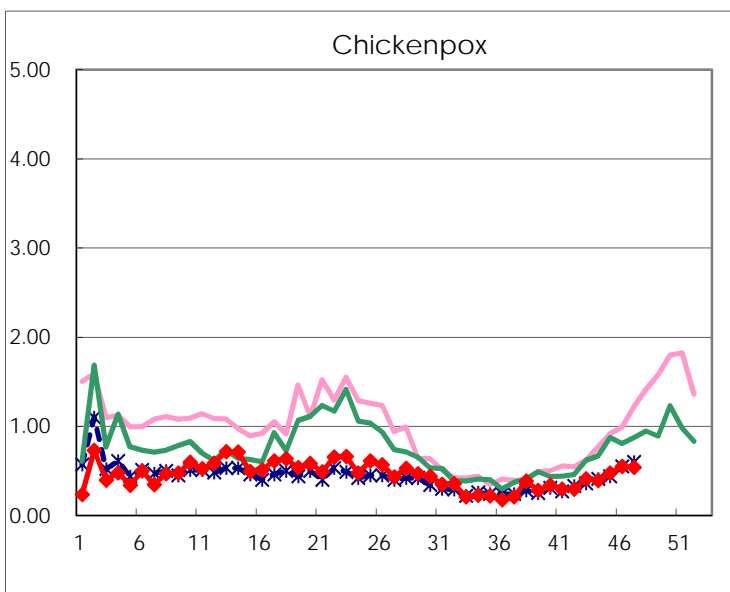
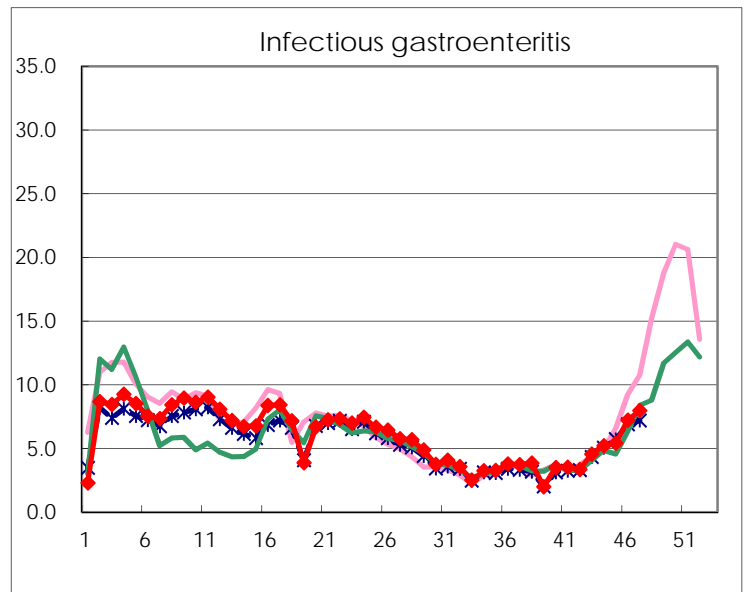
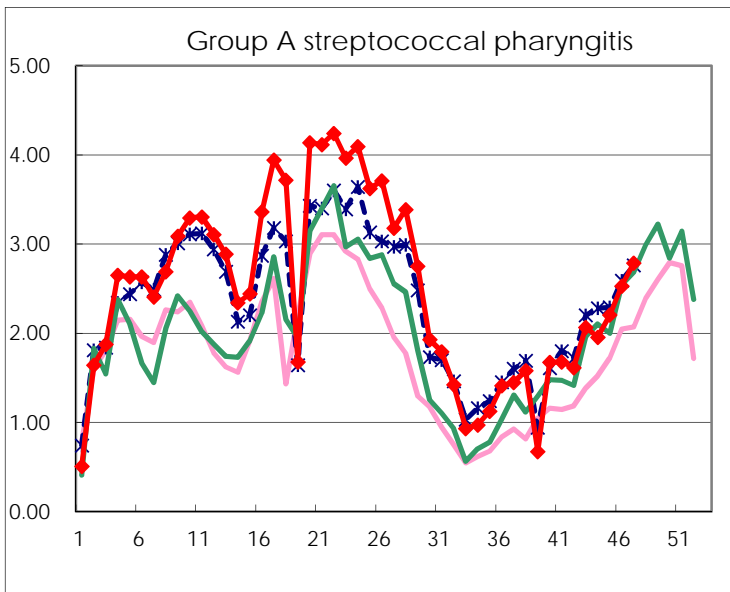
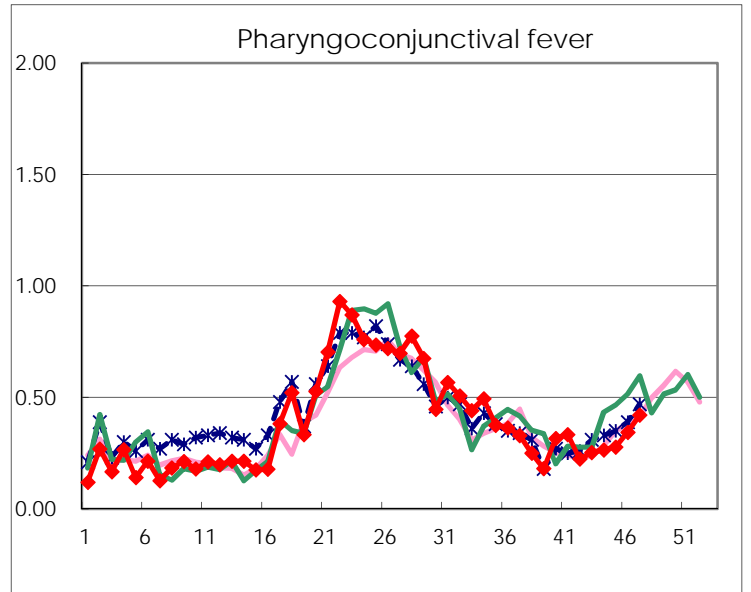
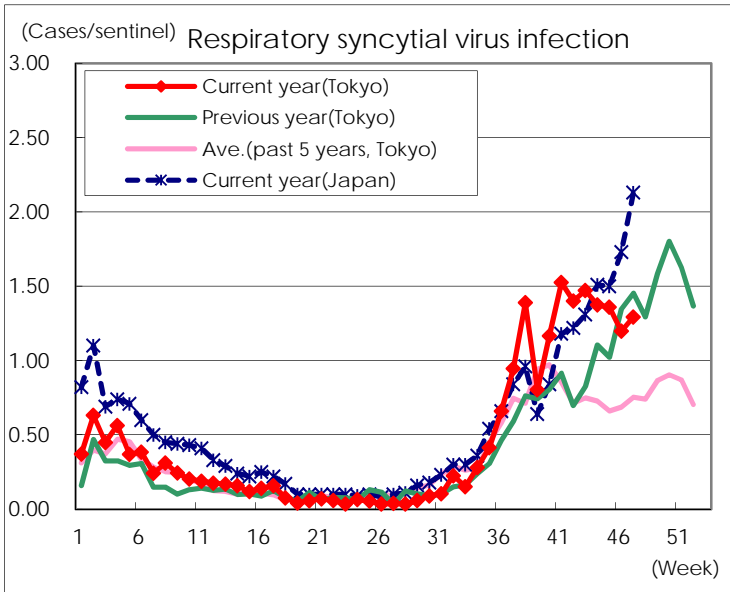
Category	Diseases	Tokyo					Japan	
		44th	45th	46th	47th	Cum 2015	47th	Cum 2015
V	Amebiasis	5	3	5	8	177	17	977
	Viral hepatitis(excluding hepatitis A and E)		2	3	1	47	1	225
	CRE infection	2	2	5	4	207	19	1,483
	Acute encephalitis(excluding JE and WNE)	1	1	2		44	2	443
	Cryptosporidiosis					3		13
	Creutzfeldt-Jakob disease				1	23	3	162
	Severe invasive streptococcal infections(TSLS)	1	3	1	3	59	6	382
	Acquired immunodeficiency syndrome (AIDS)	5	6	10	8	380	17	1,260
	Giardiasis			1		18		71
	Invasive <i>Haemophilus influenzae</i> disease		3	1		25	4	213
	Invasive meningococcal disease					7		26
	Invasive pneumococcal disease	7	8	12	12	284	26	2,006
	Varicella (limited to hospitalized case)	1		1		45	2	261
	Congenital rubella syndrome							
	Syphilis	30	21	26	16	913	37	2,272
	Disseminated cryptococcosis		1			10	1	102
	Tetanus			1		2	3	107
	Vancomycin-resistant <i>S. aureus</i> infection							
	Vancomycin-resistant Enterococcus infection					2	1	54
	Rubella			1		32		150
Measles					9		32	
MDRA infection	1				7	1	29	

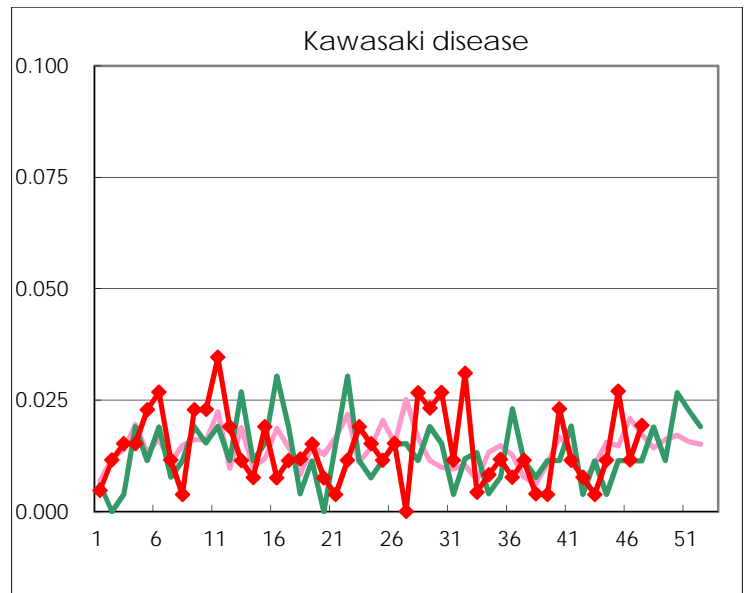
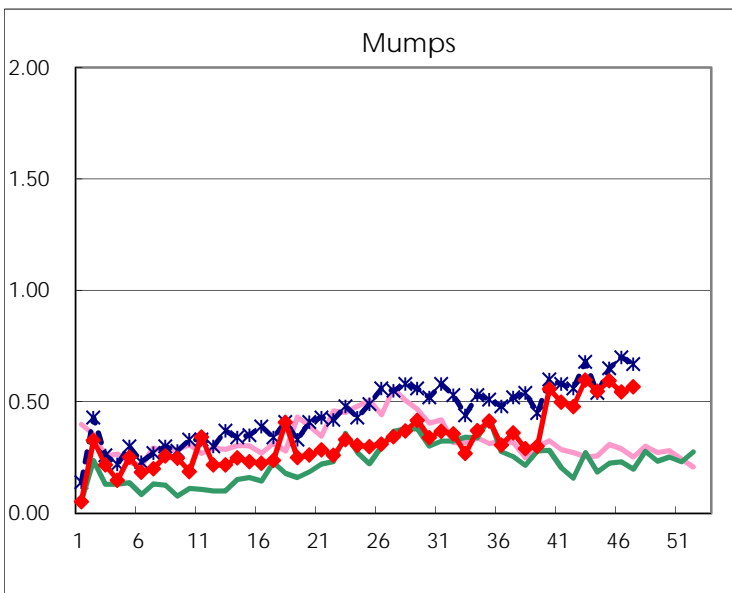
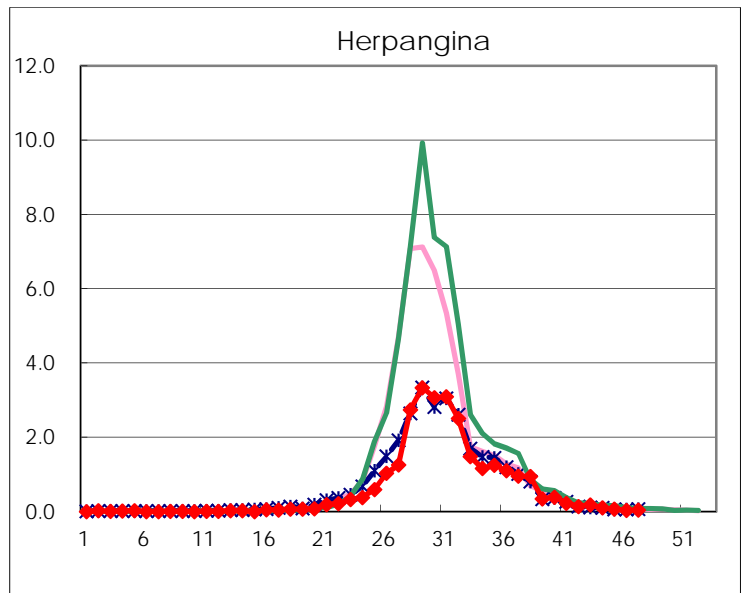
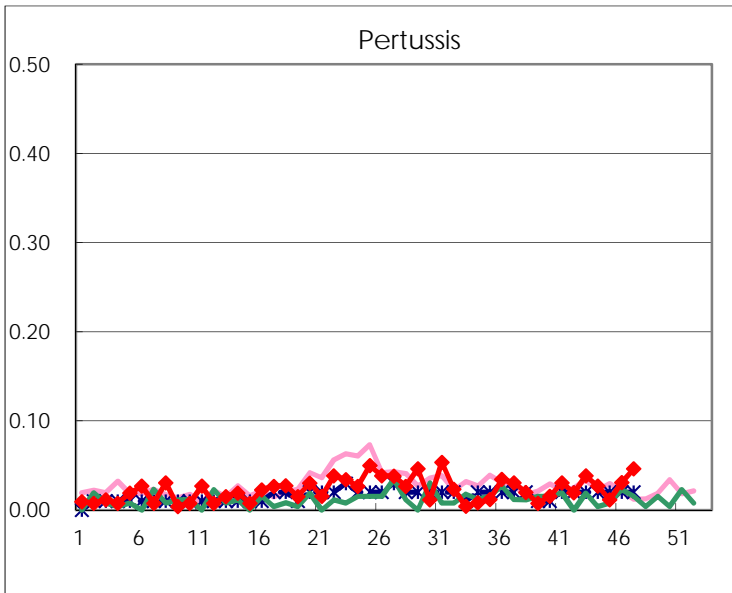
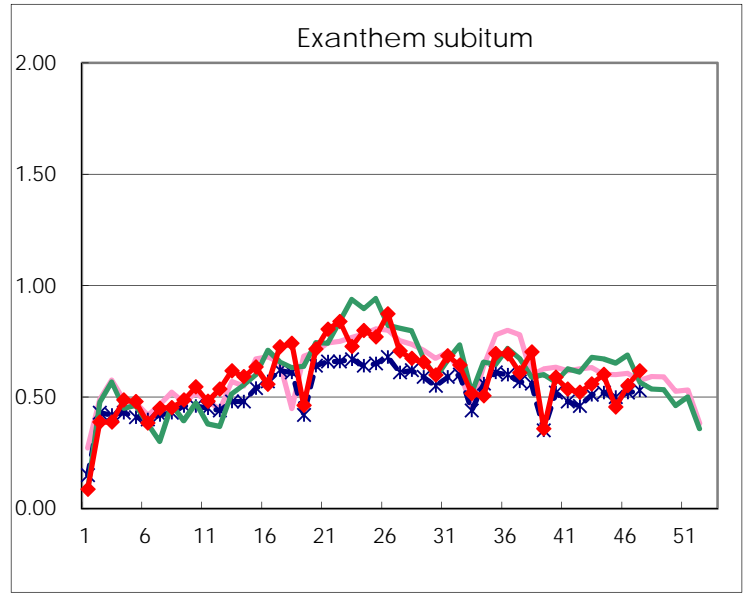
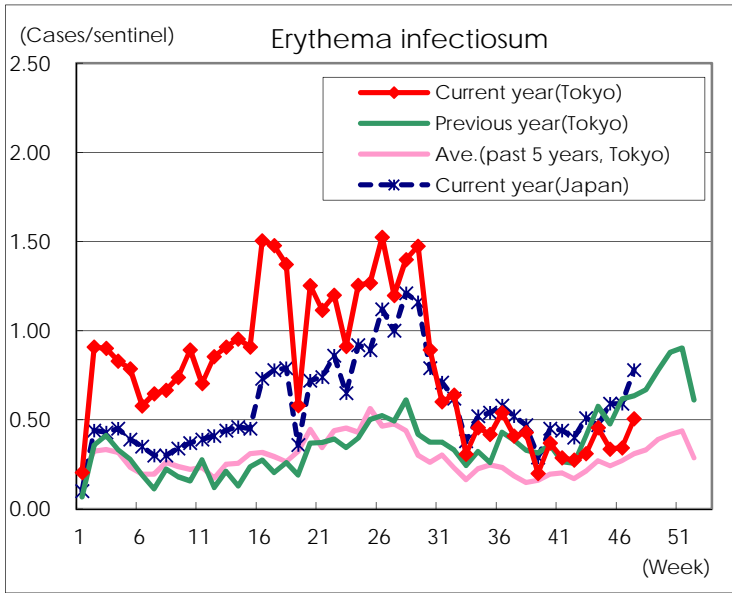
Number of patients with the diseases to be reported
by the designated clinics and hospitals

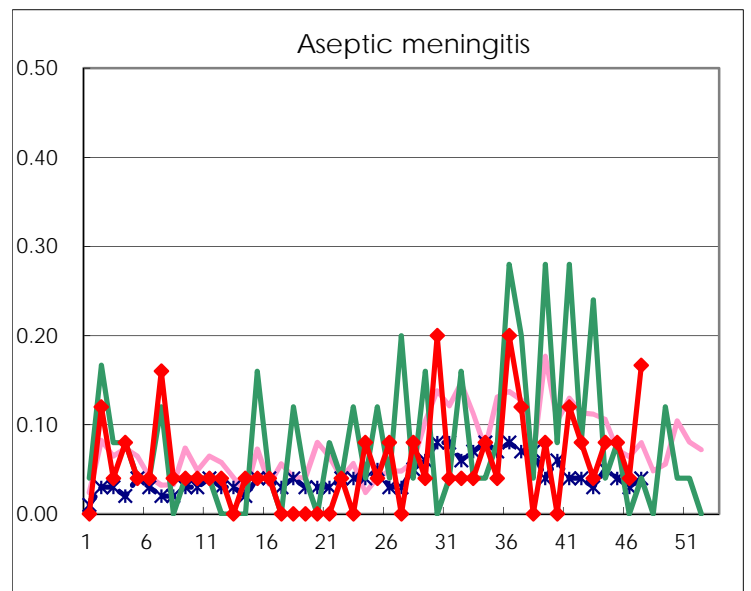
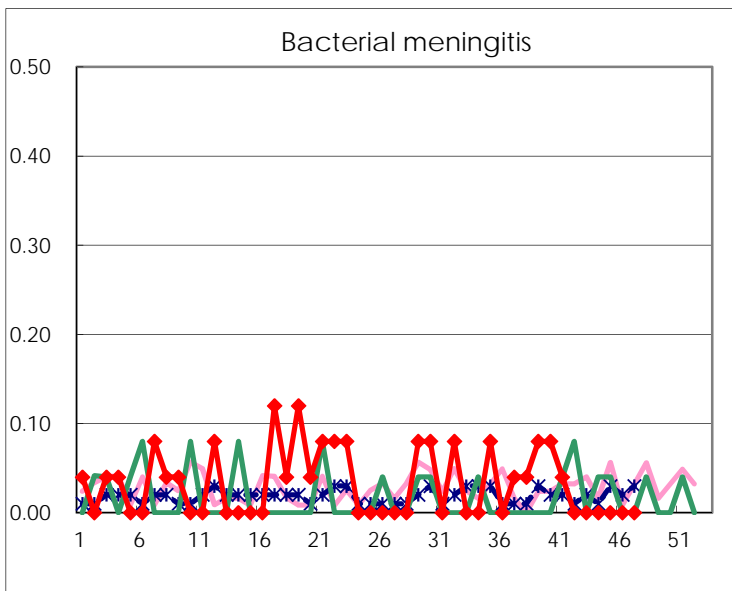
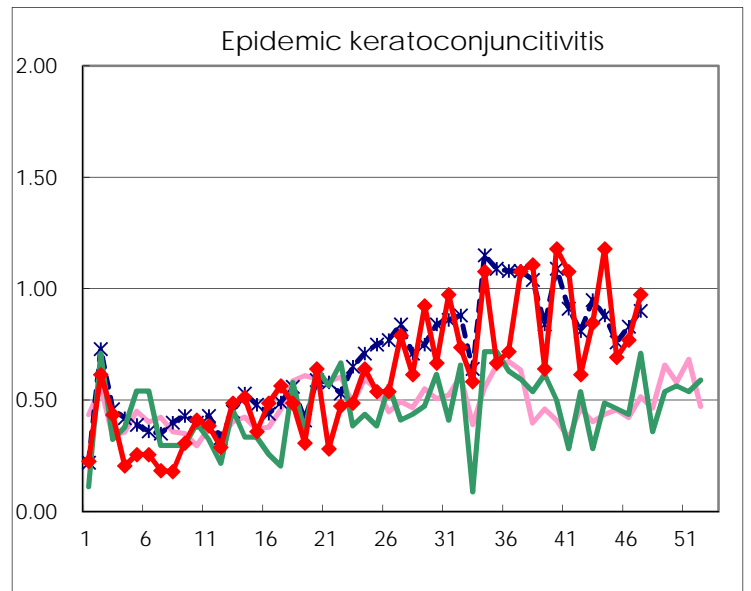
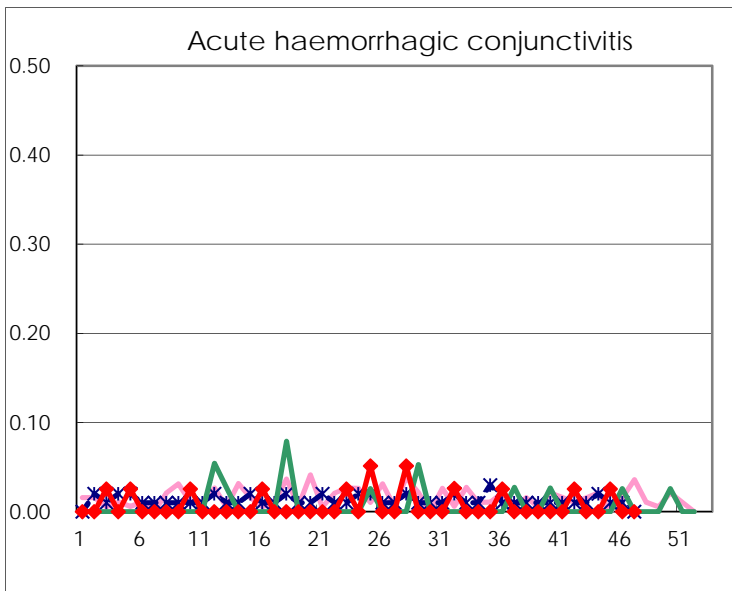
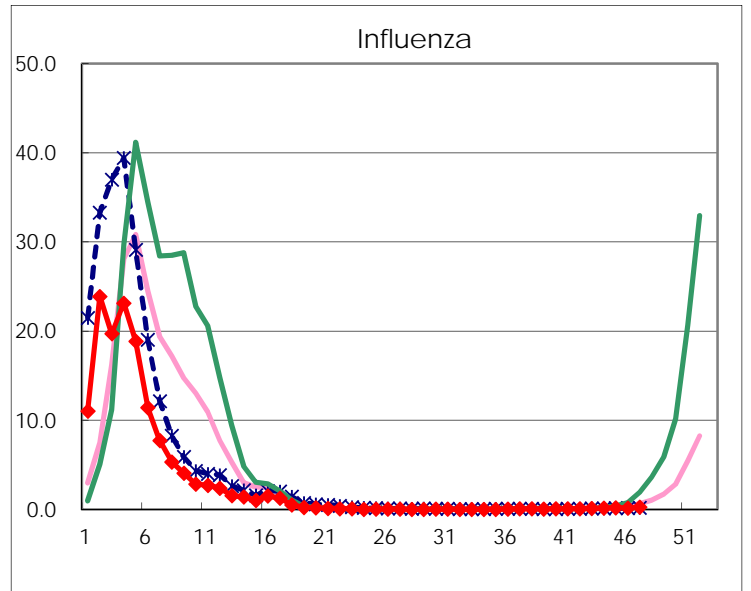
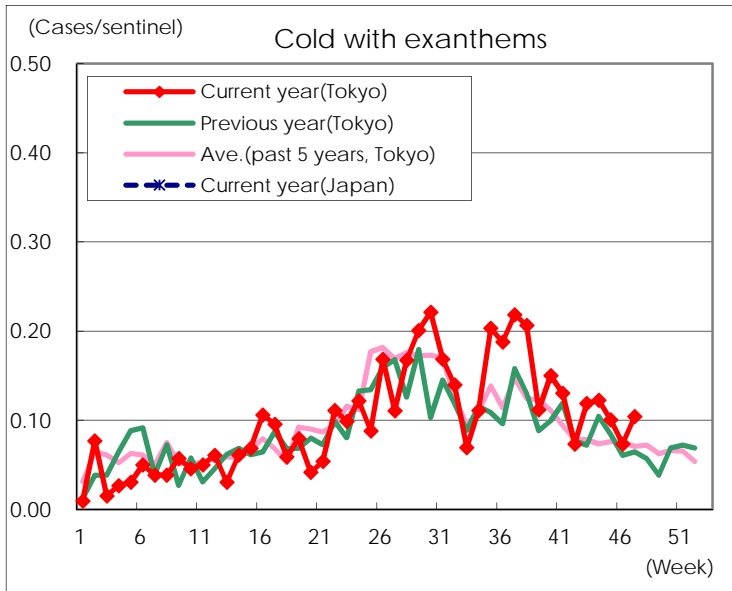
Diseases	Tokyo				
	44th	45th	46th	47th	/sentinel
Respiratory syncytial virus infection	359	352	310	335	1.29
Pharyngoconjunctival fever	69	72	89	109	0.42
Group A streptococcal pharyngitis	510	571	655	722	2.79
Infectious gastroenteritis	1,359	1,397	1,871	2,063	7.97
Chickenpox	102	123	142	140	0.54
Hand, foot, and mouth disease	141	98	57	97	0.37
Erythema infectiosum	119	87	89	131	0.51
Exanthem subitum	157	118	143	160	0.62
Pertussis	7	3	8	12	0.05
Herpangina	27	18	10	11	0.04
Mumps	143	154	141	147	0.57
Kawasaki disease	3	7	3	5	0.02
Cold with exanthems	32	26	19	27	0.10
Influenza	59	77	61	99	0.24
Acute hemorrhagic conjunctivitis		1			
Epidemic keratoconjunctivitis	46	27	30	37	0.97
Bacterial meningitis					
Aseptic meningitis	2	2	1	4	0.17
Mycoplasma pneumonia	31	26	40	31	1.29
Chlamydial pneumonia (excluding psittacosis)	2		3	4	0.17
Infectious gastroenteritis (only by Rotavirus)	1	2	1		
Influenza-Associated Hospitalizations			1	2	0.08

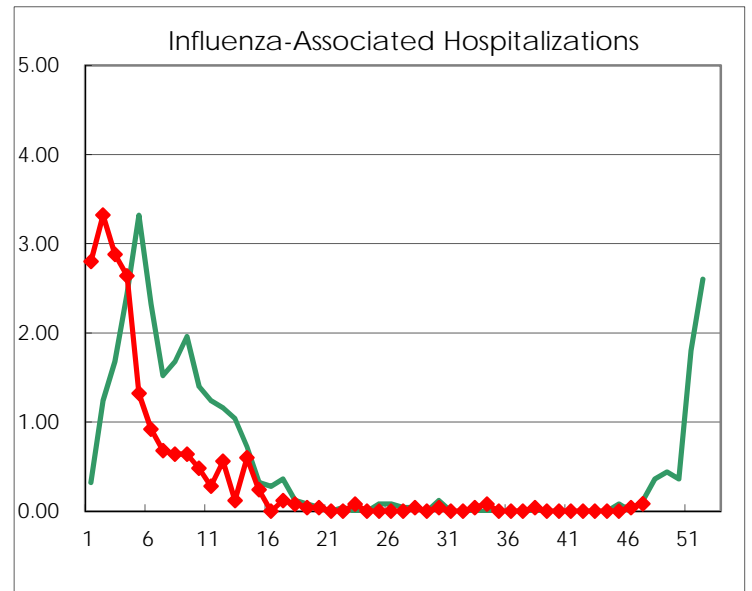
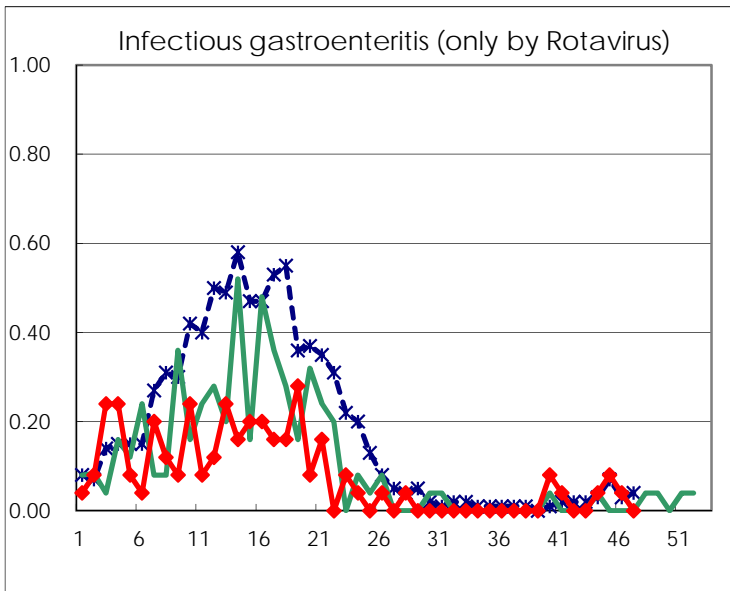
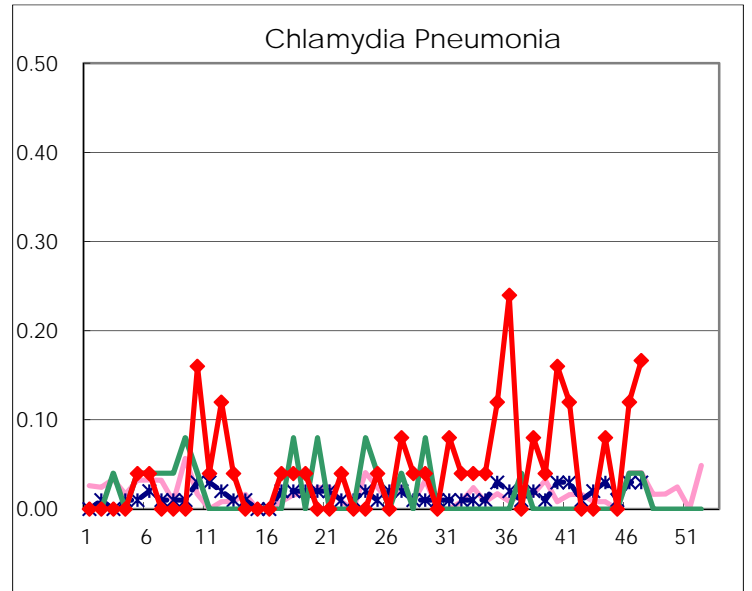
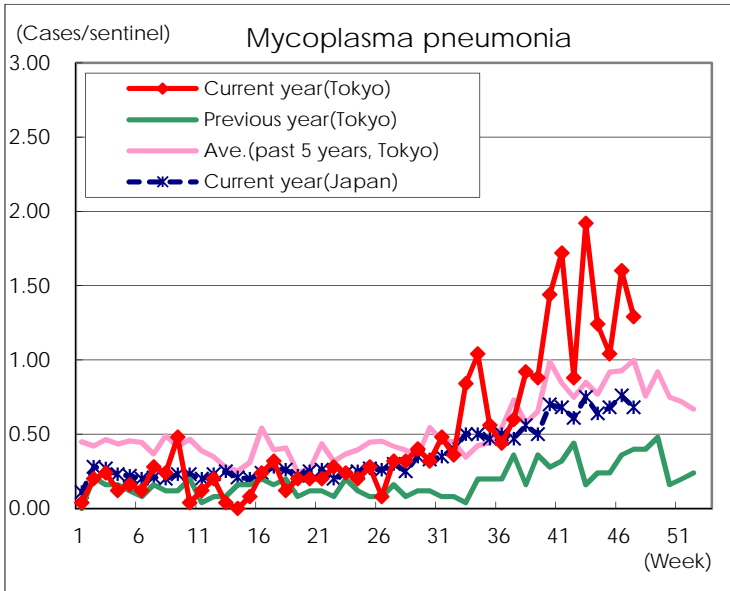
(Blank means 0.)

Disease Trend Graph (weekly reported cases per sentinel in comparison)









Number of sentinel facilities for weekly reporting		
Types of sentinels	Number of sentinels	Sentinels having reported
Pediatric	264	259
Influenza	419	409
Ophthalmic	39	38
Specially-designated	25	24