

3 December 2015 / Number 48

Surveillance System in Tokyo, Japan

The infectious diseases which all physicians must report

All physicians must report to health centers the incidence of the diseases which are shown at page one. Health centers electronically report the individual cases to Tokyo Metropolitan Infectious Disease Surveillance Center.

The infectious diseases required to be reported by the sentinels

The numbers of patients who visit the sentinel clinics or hospitals during a week are reported to health centers in Tokyo. And they electronically report the numbers to Tokyo Metropolitan Infectious Disease Surveillance Center. We have about 500 sentinel clinics and hospitals in Tokyo.

Tokyo Metropolitan Institute of Public Health

TEL:81-3-3363-3213 FAX:81-3-5332-7365

e-mail:www@tokyo-eiken.go.jp

URL:idsc.tokyo-eiken.go.jp/

Number of patients with the diseases which all physicians must report

Category	Diseases	Tokyo					Japan	
		45th	46th	47th	48th	Cum 2015	48th	Cum 2015
I	Ebola hemorrhagic fever							
	Crimean-Congo hemorrhagic fever							
	Smallpox							
	South American hemorrhagic fever							
	Plague							
	Marburg disease							
	Lassa fever							
II	Acute poliomyelitis							
	Tuberculosis	48	76	48	60	3,269	287	21,796
	Diphtheria							
	Severe Acute Respiratory Syndrome(SARS)							
	Middle East Respiratory Syndrome (MERS)							
	Avian influenza H5N1							
	Avian influenza H7N9							
III	Cholera	1				1		6
	Shigellosis		2	1	1	53	1	149
	Enterohemorrhagic Escherichia coli infection	2	3	4	1	324	24	3,437
	Typhoid fever				1	13		33
	Paratyphoid fever					8		29
IV	Hepatitis E	1	5	1		29	2	179
	West Nile fever							
	Hepatitis A	1				38	2	226
	Echinococcosis					1	1	20
	Yellow fever							
	Psittacosis							5
	Omsk hemorrhagic fever							
	Relapsing fever							4
	Kyasanur forest disease							
	Q fever							
	Rabies							
	Coccidioidomycosis					2		3
	Monkeypox							
	Severe Fever with Thrombocytopenia Syndrome							57
	Hemorrhagic fever with renal syndrome							
	Western equine encephalitis							
	Tick-borne encephalitis							
	Anthrax							
	Chikungunya fever				1	7		17
	Scrub typhus(Tsutsugamushi disease)	2		3		9	33	273
	Dengue fever	1	5	2	1	84	5	274
	Eastern equine encephalitis							
	Avian influenza (excluding H5N1 and H7N9)							
	Nipah virus infection							
	Japanese spotted fever					1		200
	Japanese encephalitis							2
	Hantavirus pulmonary syndrome							
	Herpes B virus infection							
	Glanders							
	Brucellosis					2		4
	Venezuelan equine encephalitis							
	Hendra virus infection							
	Epidemic typhus							
Botulism							1	
Malaria					16		39	
Tularemia							2	
Lyme disease			1		2		10	
Lyssavirus infection(excluding rabies)								
Rift valley fever								
Melioidosis					1		1	
Legionellosis	3	3	2	4	141	25	1,457	
Leptospirosis	1				10		27	
	Rocky mountain spotted fever							

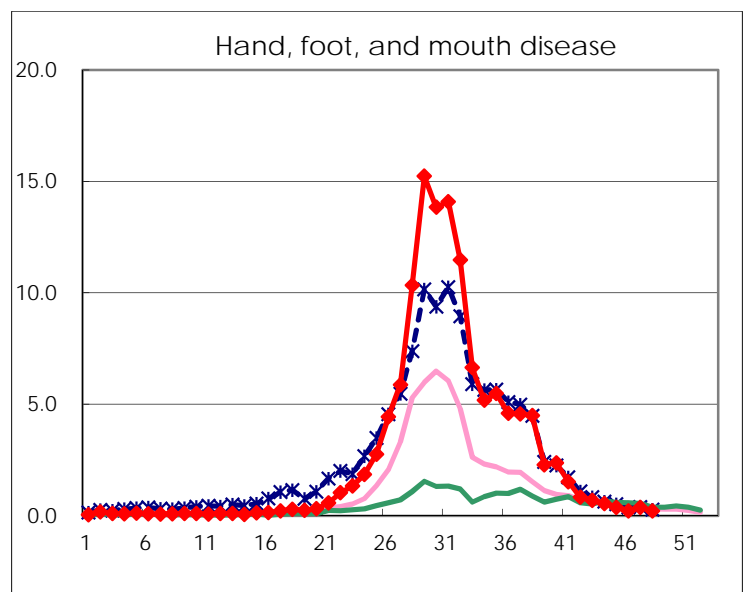
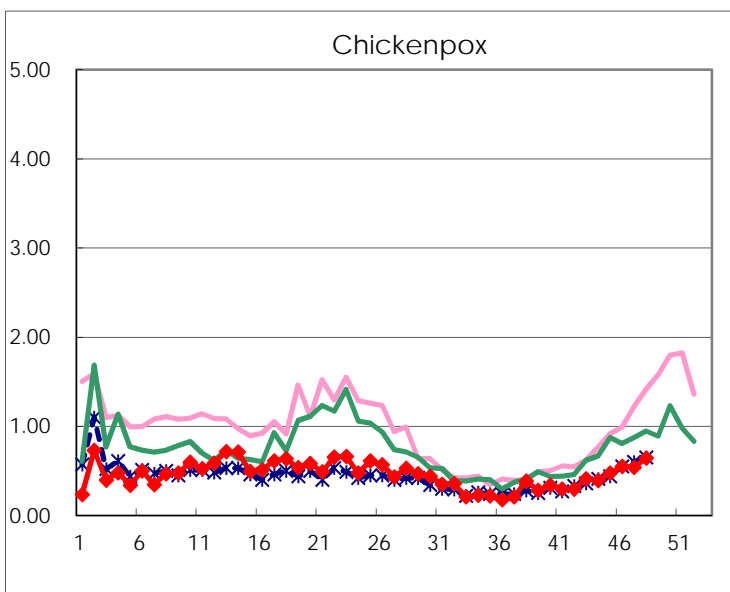
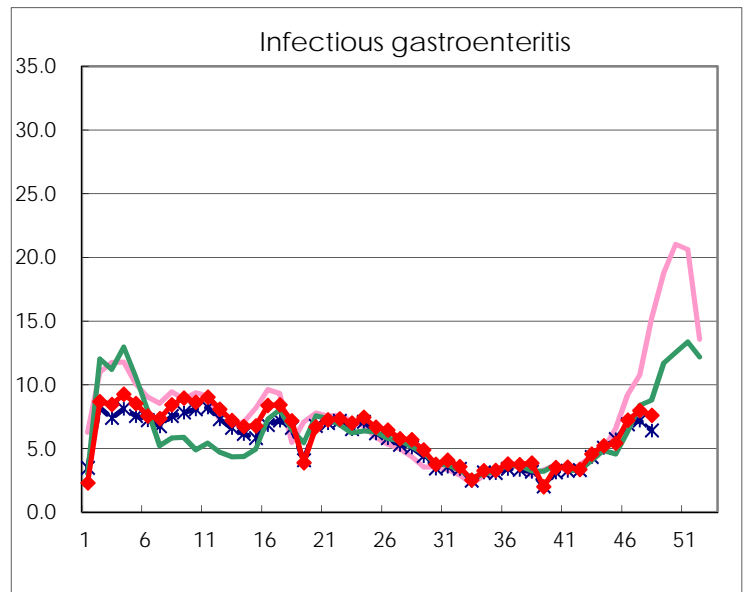
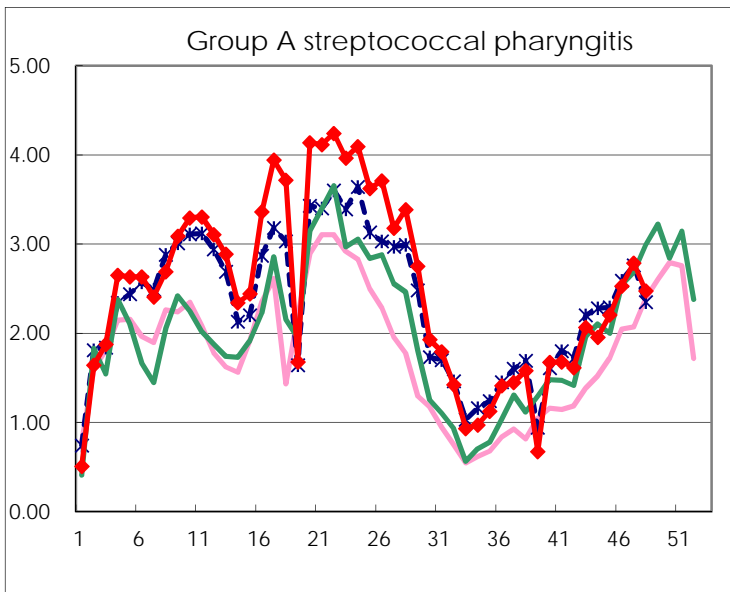
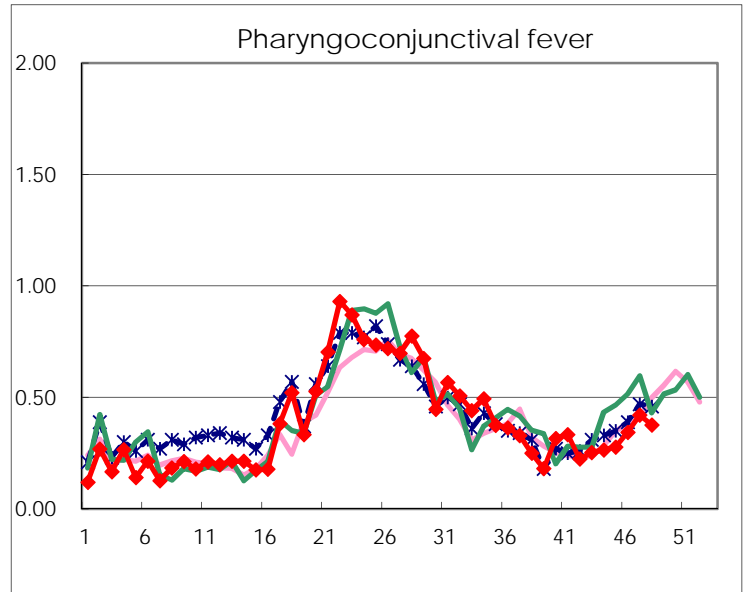
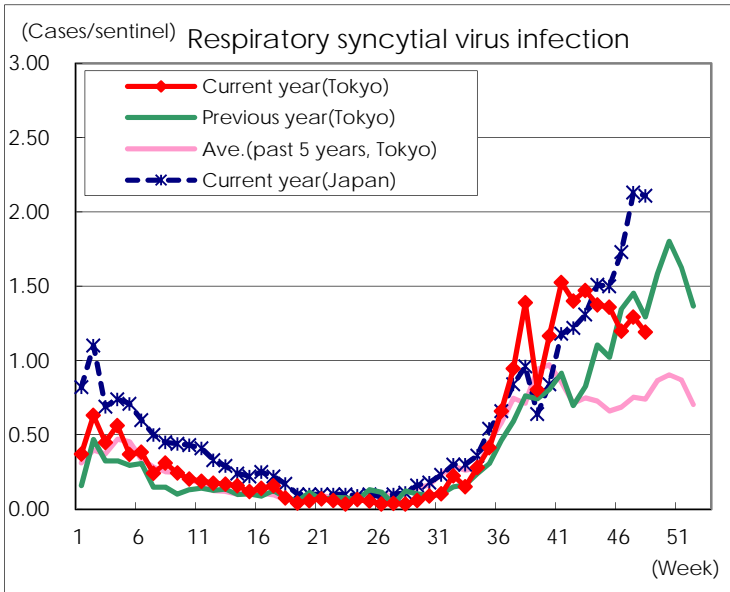
Category	Diseases	Tokyo					Japan	
		45th	46th	47th	48th	Cum 2015	48th	Cum 2015
V	Amebiasis	3	5	8	4	181	8	992
	Viral hepatitis(excluding hepatitis A and E)	2	3	1	1	48	8	234
	CRE infection	2	5	5	5	213	15	1,512
	Acute encephalitis(excluding JE and WNE)	1	2			44	2	448
	Cryptosporidiosis					3		13
	Creutzfeldt-Jakob disease			1		23	2	165
	Severe invasive streptococcal infections(TSLS)	3	1	3	1	60	6	391
	Acquired immunodeficiency syndrome (AIDS)	6	10	8	6	386	15	1,279
	Giardiasis		1			18	1	72
	Invasive <i>Haemophilus influenzae</i> disease	3	1		2	27	3	216
	Invasive meningococcal disease				1	8		27
	Invasive pneumococcal disease	8	12	13	3	288	23	2,047
	Varicella (limited to hospitalized case)		1		3	48	3	268
	Congenital rubella syndrome							
	Syphilis	21	26	16	17	930	45	2,340
	Disseminated cryptococcosis	1				10	1	104
	Tetanus		1			2	1	110
	Vancomycin-resistant <i>S. aureus</i> infection							
	Vancomycin-resistant Enterococcus infection					2	1	57
	Rubella		1			32	2	151
Measles					9	2	34	
MDRA infection		1		2	10		32	

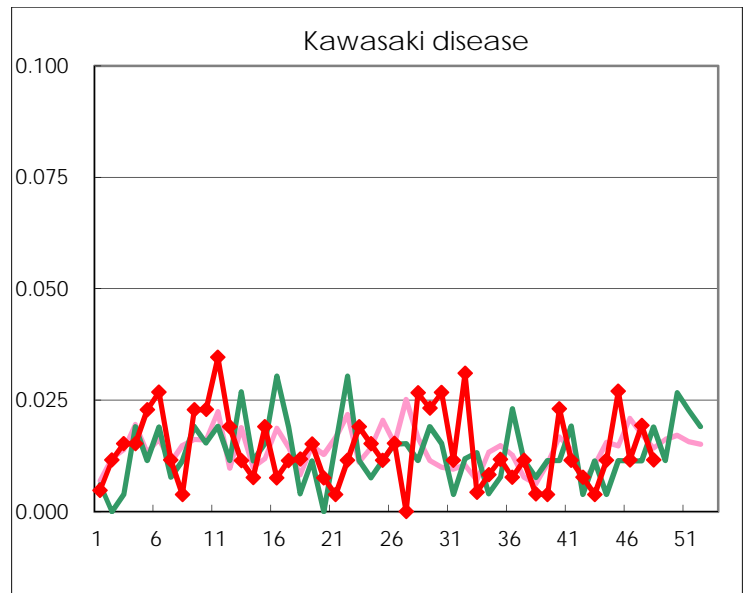
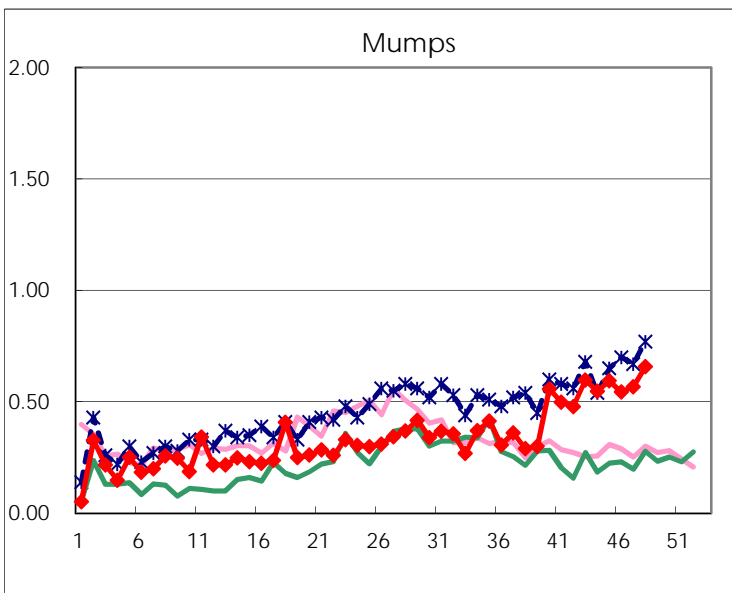
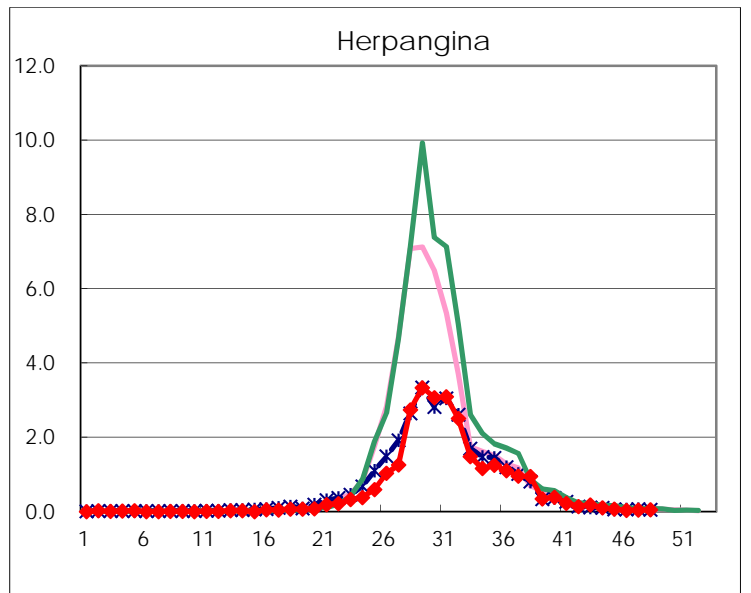
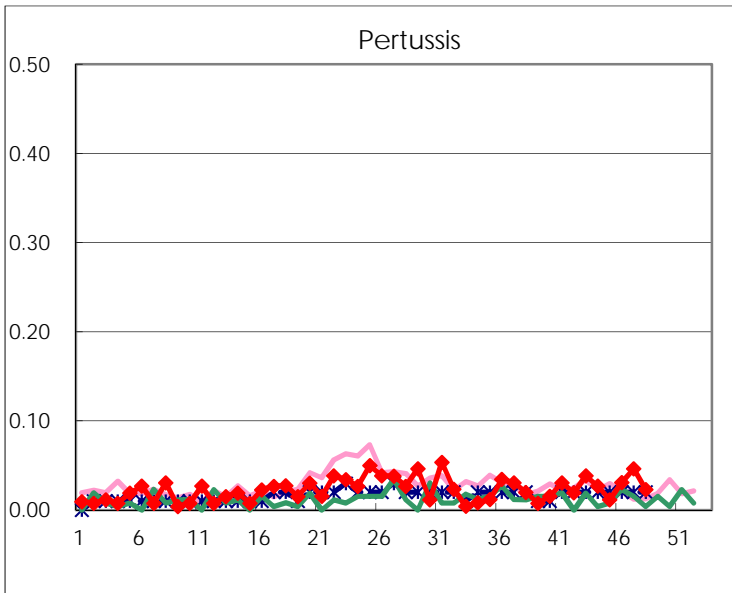
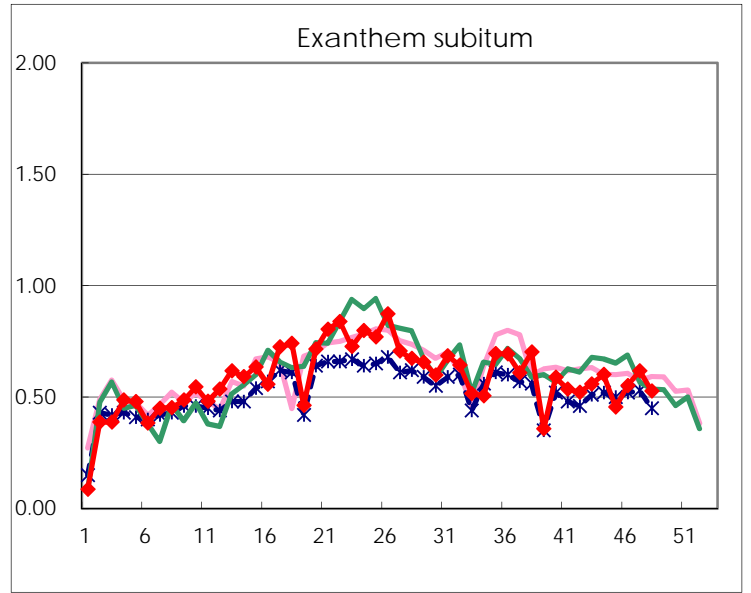
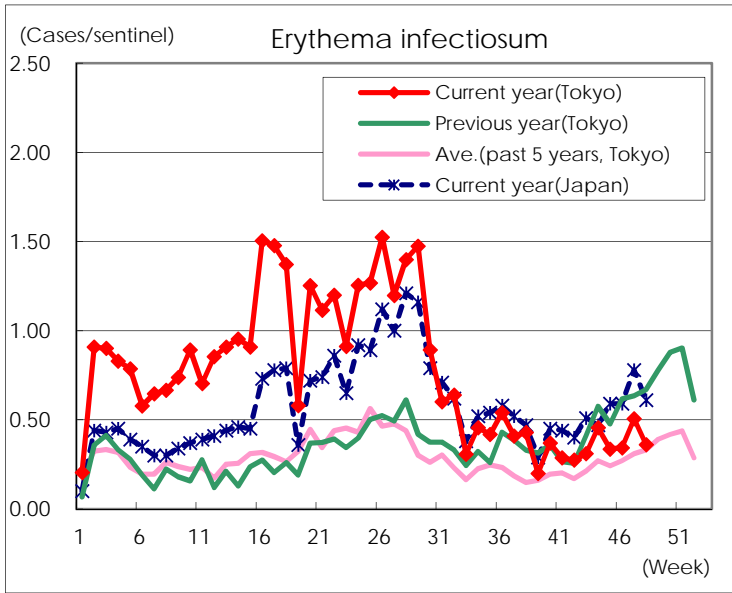
Number of patients with the diseases to be reported
by the designated clinics and hospitals

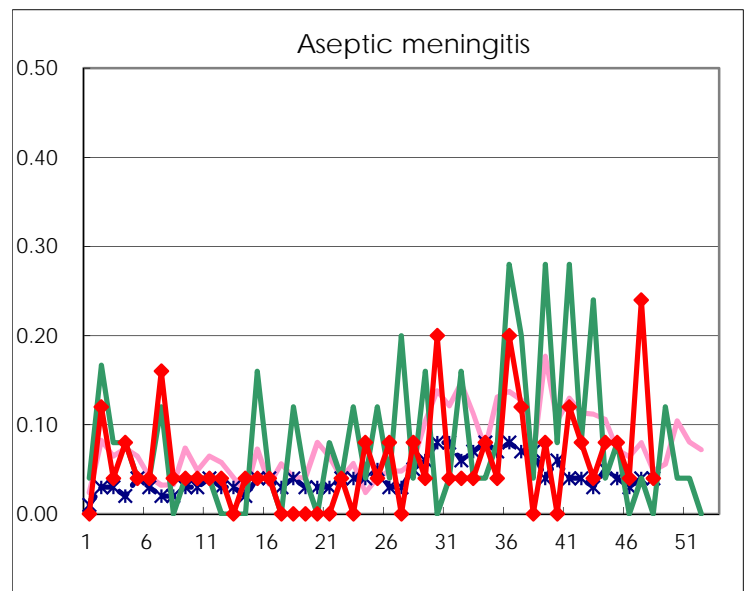
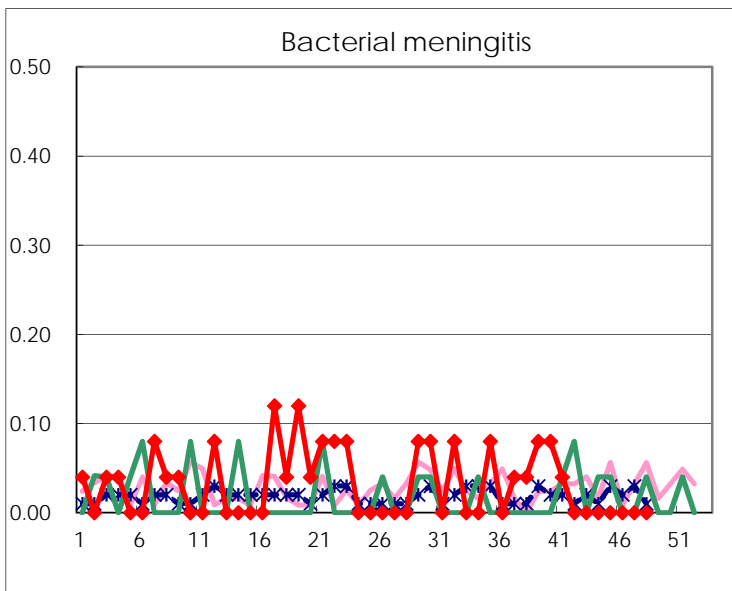
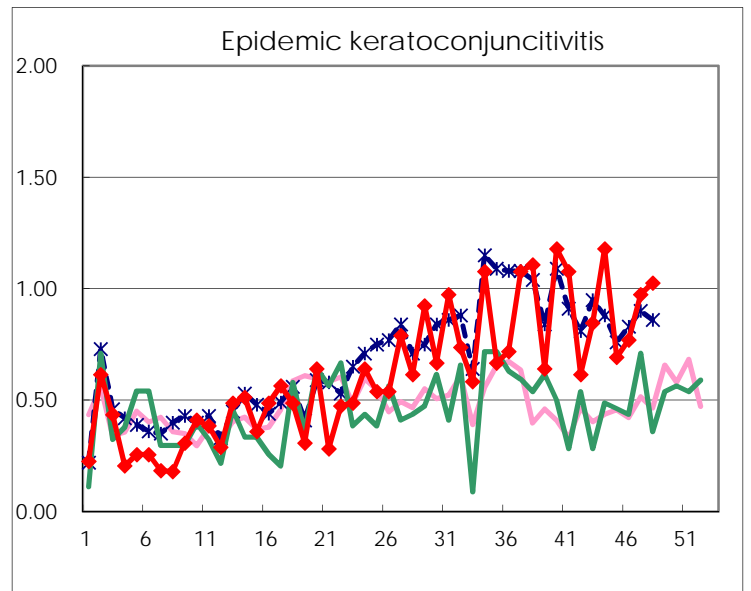
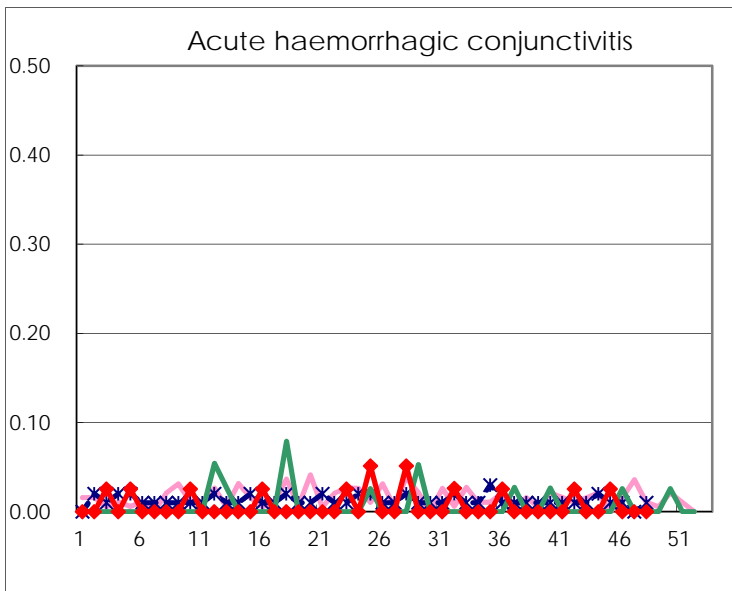
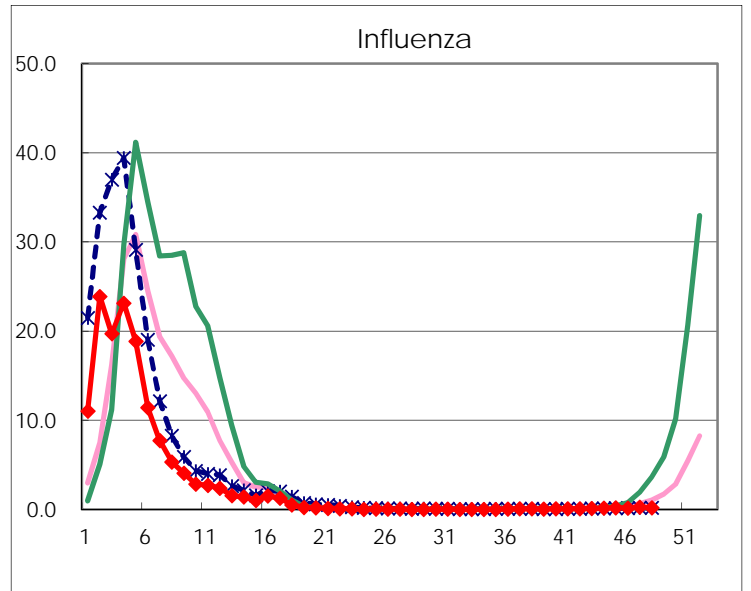
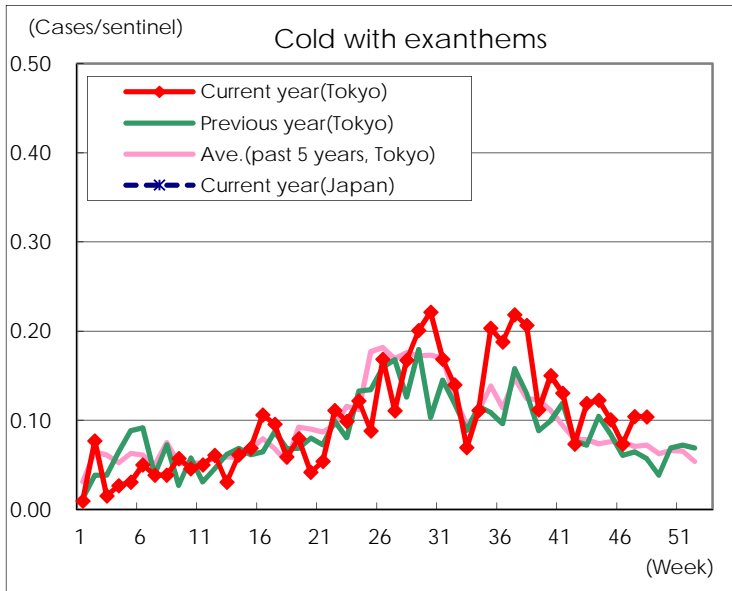
Diseases	Tokyo				
	45th	46th	47th	48th	/sentinel
Respiratory syncytial virus infection	352	310	335	310	1.19
Pharyngoconjunctival fever	72	89	109	98	0.38
Group A streptococcal pharyngitis	571	655	722	643	2.47
Infectious gastroenteritis	1,397	1,871	2,063	1,974	7.59
Chickenpox	123	142	140	167	0.64
Hand, foot, and mouth disease	98	57	97	56	0.22
Erythema infectiosum	87	89	131	94	0.36
Exanthem subitum	118	143	160	137	0.53
Pertussis	3	8	12	6	0.02
Herpangina	18	10	11	13	0.05
Mumps	154	141	147	171	0.66
Kawasaki disease	7	3	5	3	0.01
Cold with exanthems	26	19	27	27	0.10
Influenza	77	61	99	75	0.18
Acute hemorrhagic conjunctivitis	1				
Epidemic keratoconjunctivitis	27	30	38	40	1.03
Bacterial meningitis					
Aseptic meningitis	2	1	6	1	0.04
Mycoplasma pneumonia	26	40	31	28	1.12
Chlamydial pneumonia (excluding psittacosis)		3	4		
Infectious gastroenteritis (only by Rotavirus)	2	1			
Influenza-Associated Hospitalizations		1	2	1	0.04

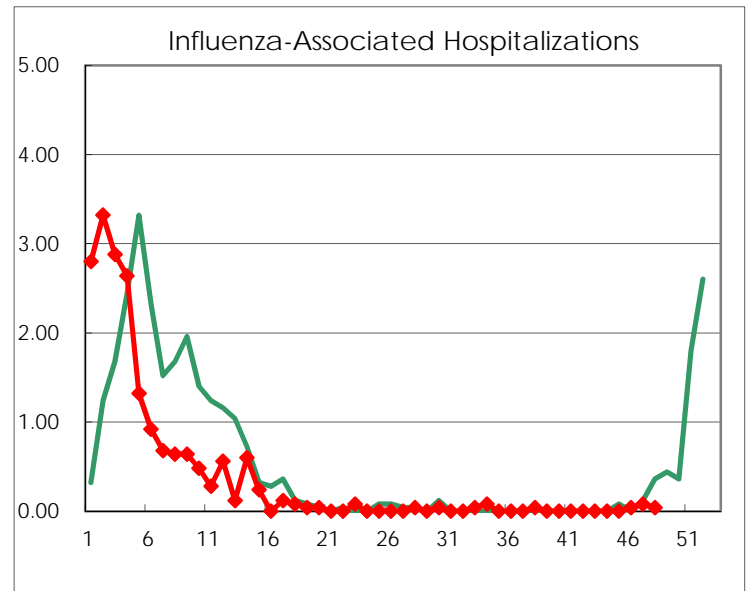
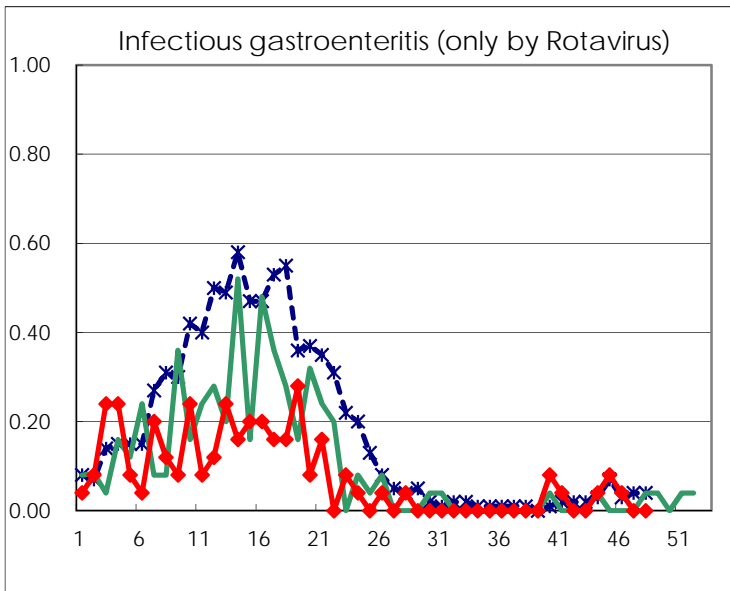
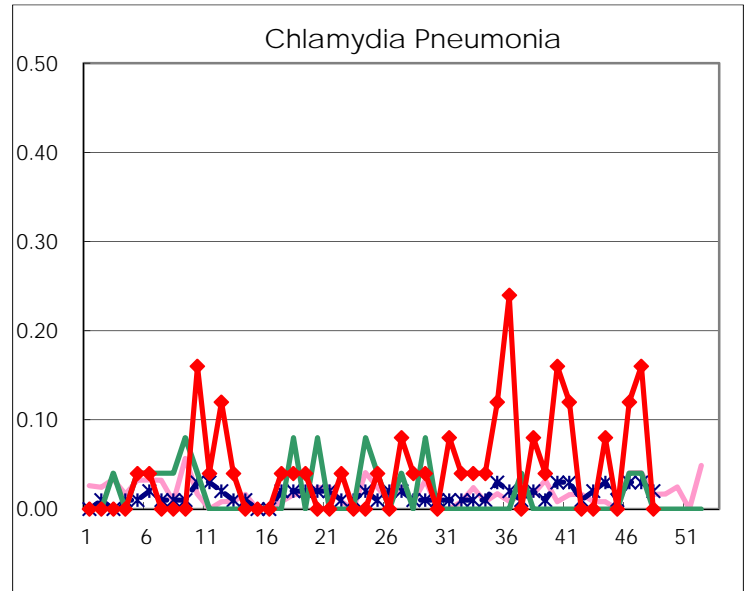
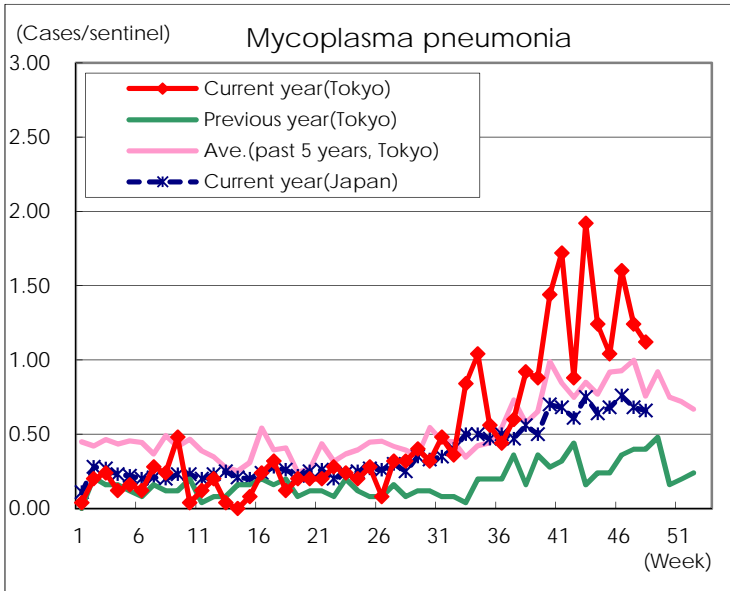
(Blank means 0.)

Disease Trend Graph (weekly reported cases per sentinel in comparison)









Number of sentinel facilities for weekly reporting		
Types of sentinels	Number of sentinels	Sentinels having reported
Pediatric	264	260
Influenza	419	411
Ophthalmic	39	39
Specially-designated	25	25