

10 December 2015 / Number 49

Surveillance System in Tokyo, Japan

The infectious diseases which all physicians must report

All physicians must report to health centers the incidence of the diseases which are shown at page one. Health centers electronically report the individual cases to Tokyo Metropolitan Infectious Disease Surveillance Center.

The infectious diseases required to be reported by the sentinels

The numbers of patients who visit the sentinel clinics or hospitals during a week are reported to health centers in Tokyo. And they electronically report the numbers to Tokyo Metropolitan Infectious Disease Surveillance Center. We have about 500 sentinel clinics and hospitals in Tokyo.

Tokyo Metropolitan Institute of Public Health

TEL:81-3-3363-3213 FAX:81-3-5332-7365

e-mail:www@tokyo-eiken.go.jp

URL:idsc.tokyo-eiken.go.jp/

Number of patients with the diseases which all physicians must report

Category	Diseases	Tokyo				Japan		
		46th	47th	48th	49th	Cum 2015	49th	Cum 2015
I	Ebola hemorrhagic fever							
	Crimean-Congo hemorrhagic fever							
	Smallpox							
	South American hemorrhagic fever							
	Plague							
	Marburg disease							
	Lassa fever							
II	Acute poliomyelitis							
	Tuberculosis	74	49	65	56	3,328	341	22,255
	Diphtheria							
	Severe Acute Respiratory Syndrome(SARS)							
	Middle East Respiratory Syndrome (MERS)							
	Avian influenza H5N1							
	Avian influenza H7N9							
III	Cholera					1		6
	Shigellosis	2	1	1		53		149
	Enterohemorrhagic Escherichia coli infection	3	4	1	5	329	29	3,481
	Typhoid fever			1		13	1	34
	Paratyphoid fever				1	9	2	31
IV	Hepatitis E	5	1		1	30	2	181
	West Nile fever							
	Hepatitis A				2	40	4	231
	Echinococcosis					1		20
	Yellow fever							
	Psittacosis							5
	Omsk hemorrhagic fever							
	Relapsing fever							4
	Kyasanur forest disease							
	Q fever							
	Rabies							
	Coccidioidomycosis					2		3
	Monkeypox							
	Severe Fever with Thrombocytopenia Syndrome						2	59
	Hemorrhagic fever with renal syndrome							
	Western equine encephalitis							
	Tick-borne encephalitis							
	Anthrax							
	Chikungunya fever			1		7		17
	Scrub typhus(Tsutsugamushi disease)		3		2	11	36	316
	Dengue fever	5	2	1		84		274
	Eastern equine encephalitis							
	Avian influenza (excluding H5N1 and H7N9)							
	Nipah virus infection							
	Japanese spotted fever					1		200
	Japanese encephalitis							2
	Hantavirus pulmonary syndrome							
	Herpes B virus infection							
	Glanders							
	Brucellosis					2		4
	Venezuelan equine encephalitis							
	Hendra virus infection							
Epidemic typhus								
Botulism							1	
Malaria					16		39	
Tularemia							2	
Lyme disease		1			2		10	
Lyssavirus infection(excluding rabies)								
Rift valley fever								
Melioidosis					1		1	
Legionellosis	3	2	4	2	143	37	1,500	
Leptospirosis					10	1	30	
	Rocky mountain spotted fever							

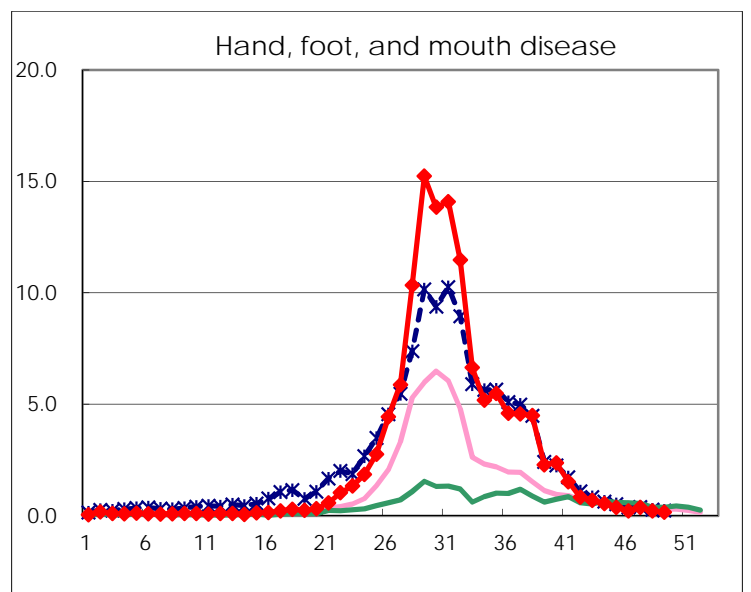
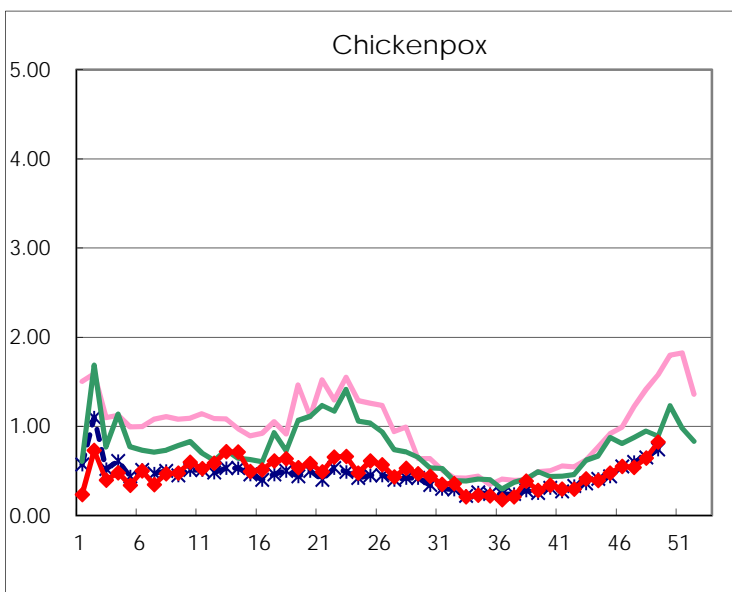
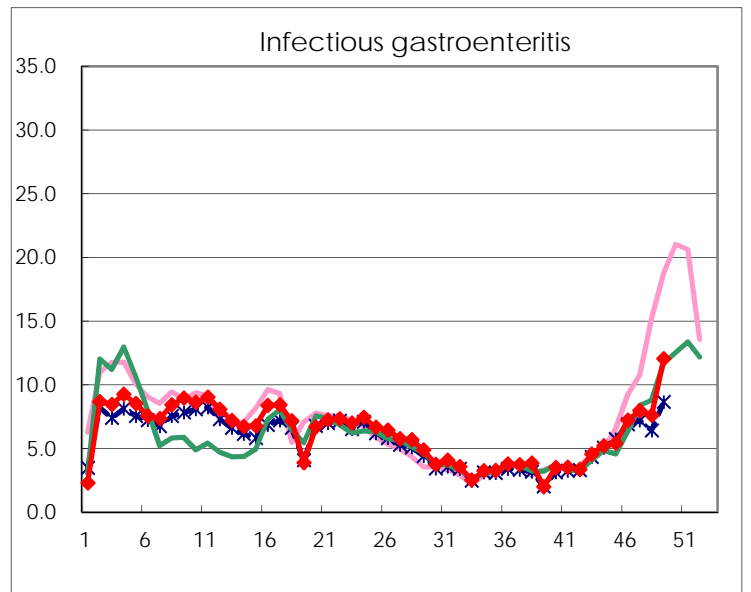
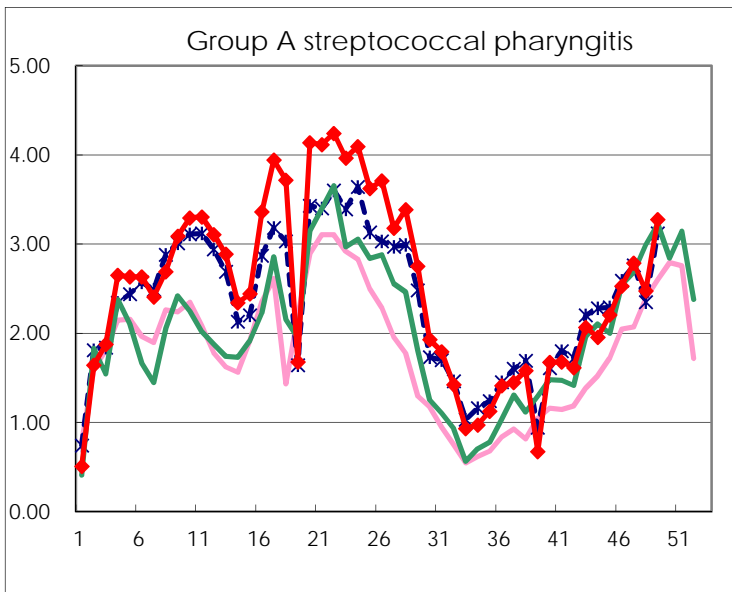
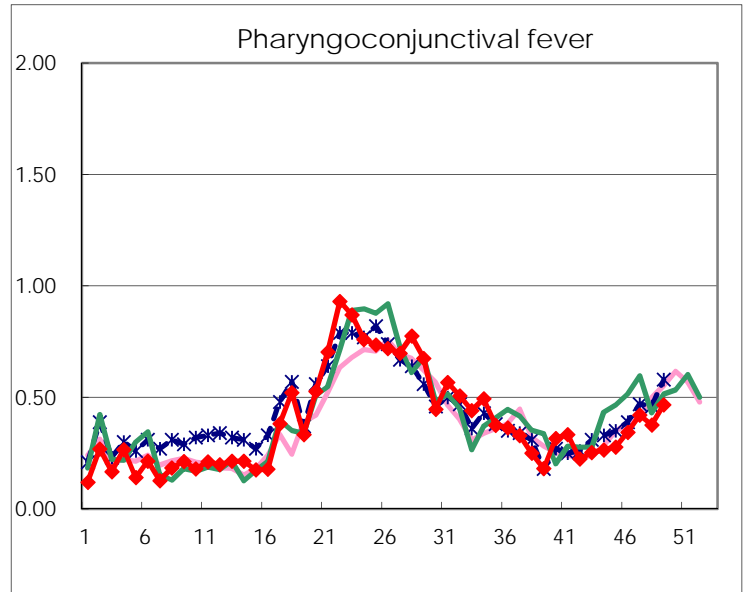
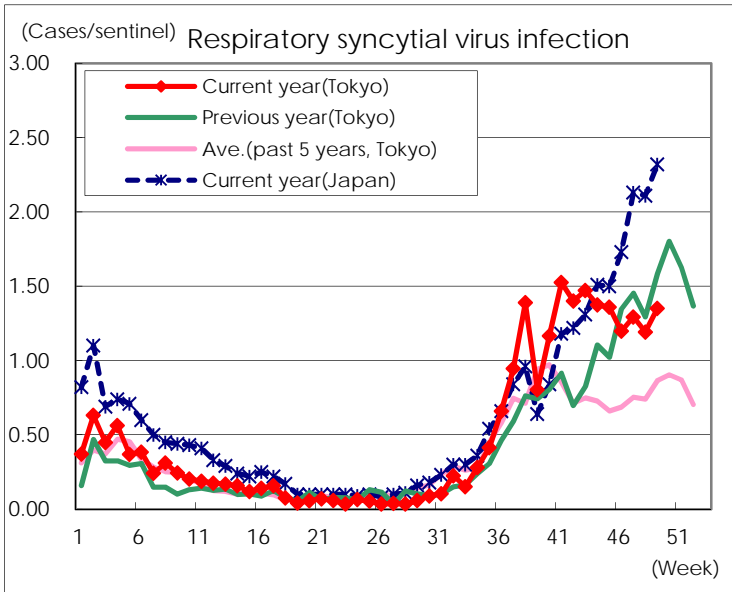
Category	Diseases	Tokyo					Japan	
		46th	47th	48th	49th	Cum 2015	49th	Cum 2015
V	Amebiasis	5	8	4	5	186	13	1,012
	Viral hepatitis(excluding hepatitis A and E)	3	1	1		48	1	236
	CRE infection	5	5	5	5	218	15	1,546
	Acute encephalitis(excluding JE and WNE)	2				44	8	462
	Cryptosporidiosis					3		14
	Creutzfeldt-Jakob disease		1		1	24	4	170
	Severe invasive streptococcal infections(TSLS)	1	3	1		60	6	399
	Acquired immunodeficiency syndrome (AIDS)	10	8	7	9	396	19	1,306
	Giardiasis	1				18		73
	Invasive <i>Haemophilus influenzae</i> disease	1		2		27	4	221
	Invasive meningococcal disease			1		8		27
	Invasive pneumococcal disease	12	13	3	2	290	31	2,095
	Varicella (limited to hospitalized case)	1		3	1	49	7	278
	Congenital rubella syndrome							
	Syphilis	26	16	17	23	953	44	2,412
	Disseminated cryptococcosis				1	11	2	110
	Tetanus	1				2		110
	Vancomycin-resistant <i>S. aureus</i> infection							
	Vancomycin-resistant Enterococcus infection					2		57
	Rubella	1			1	33	3	155
Measles				1	10		34	
MDRA infection	1		2		10		32	

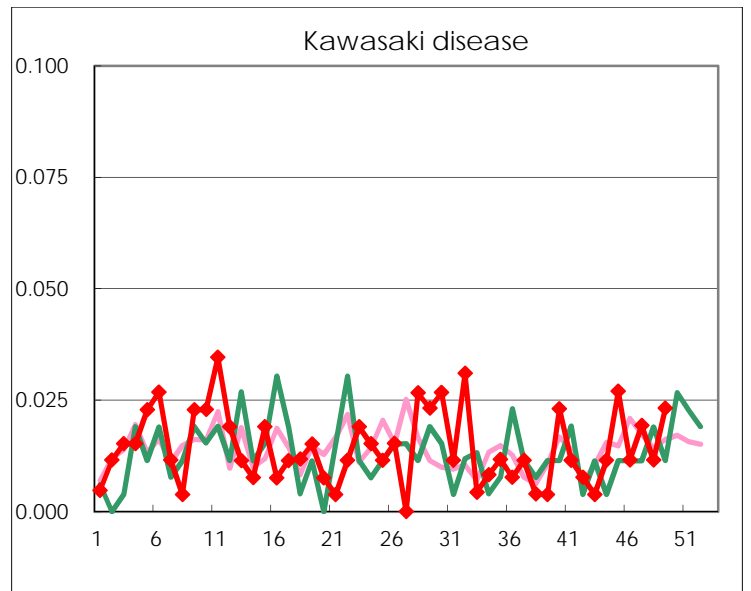
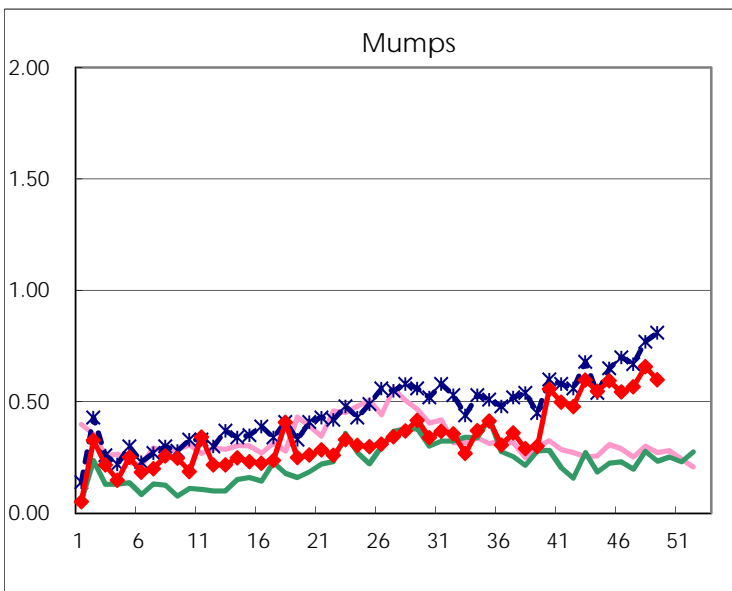
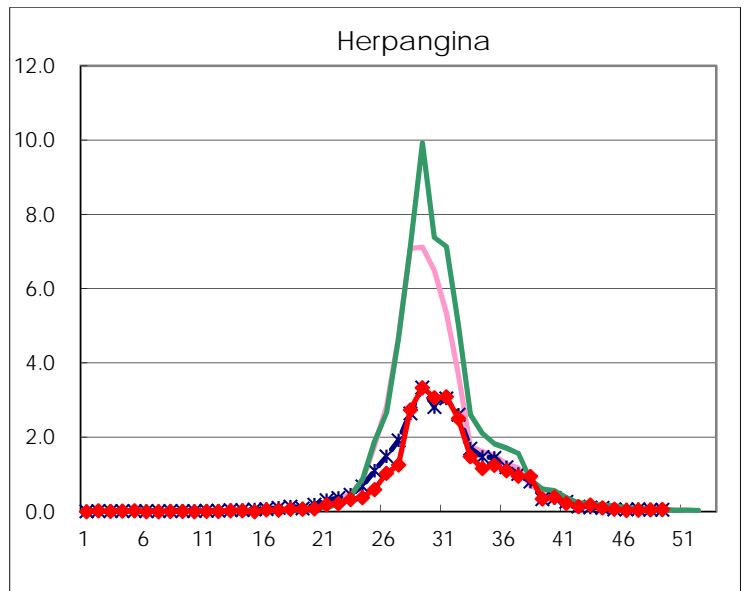
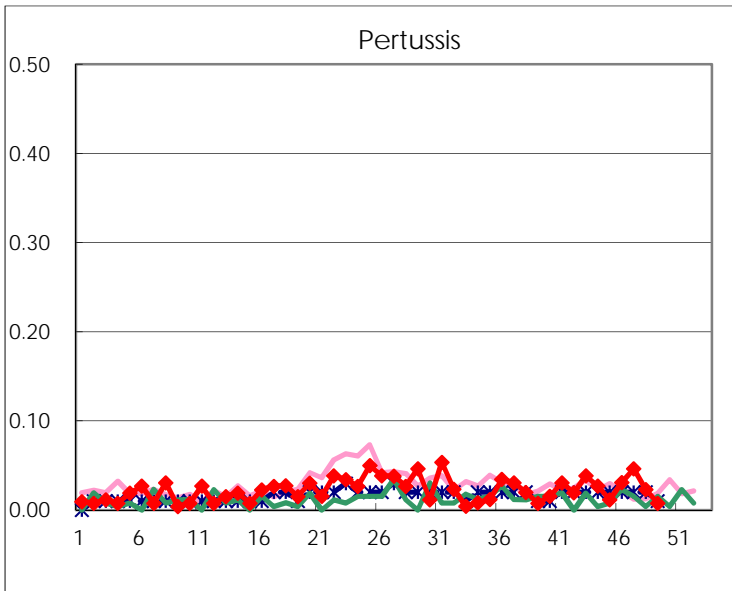
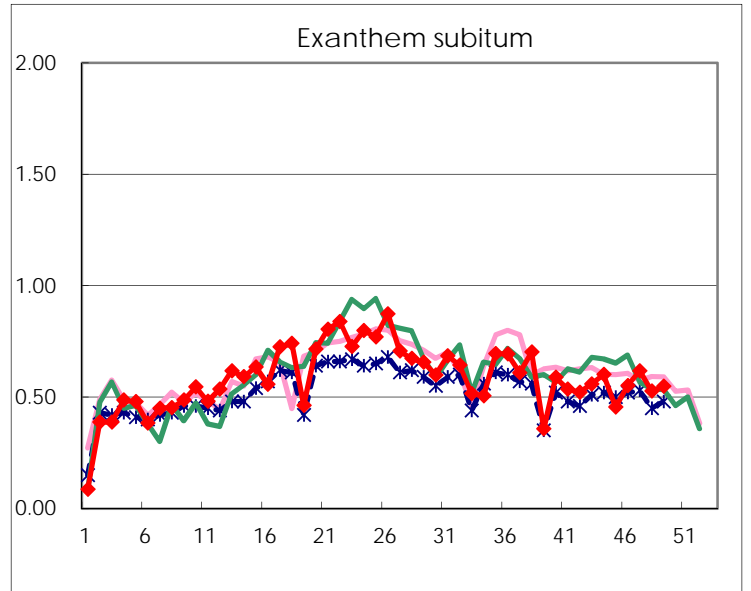
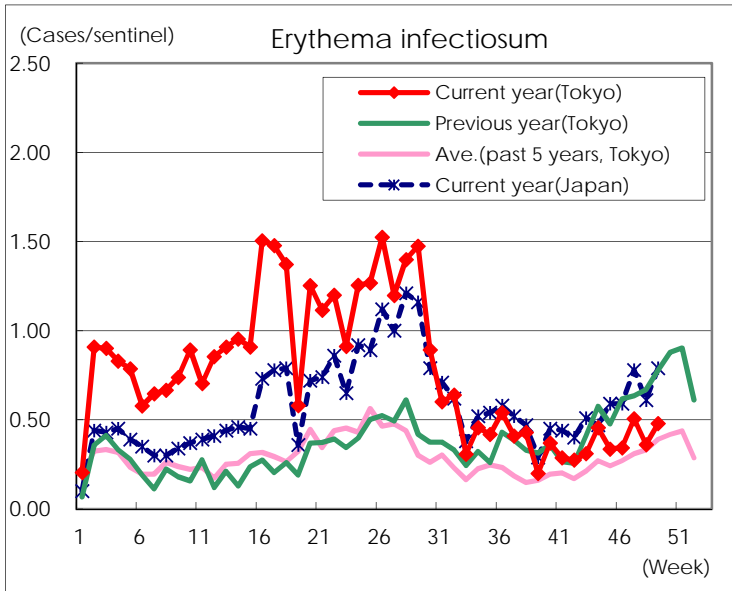
Number of patients with the diseases to be reported
by the designated clinics and hospitals

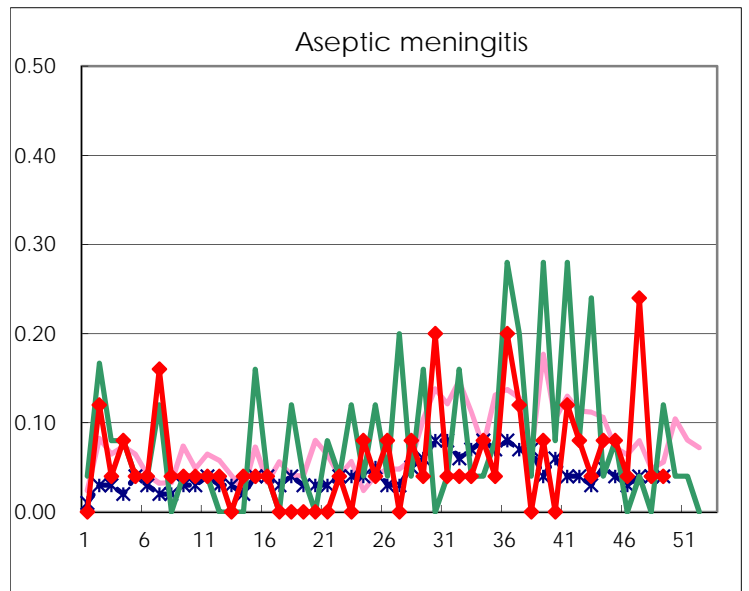
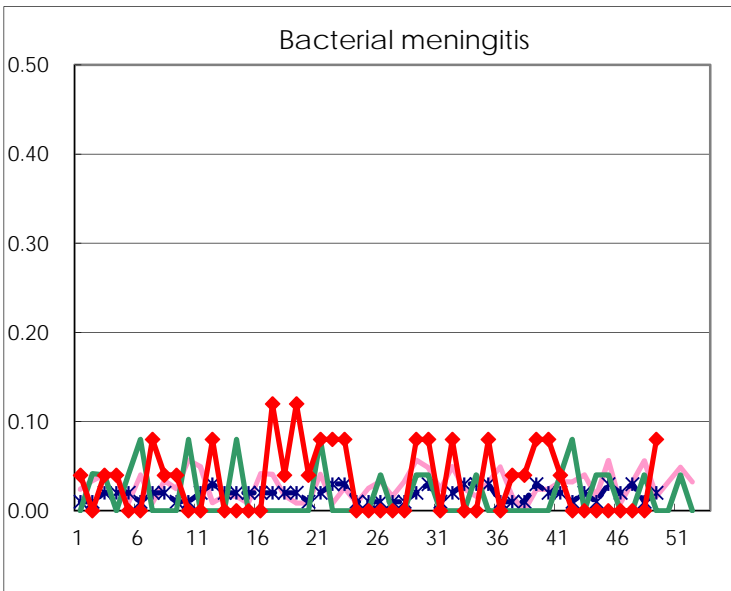
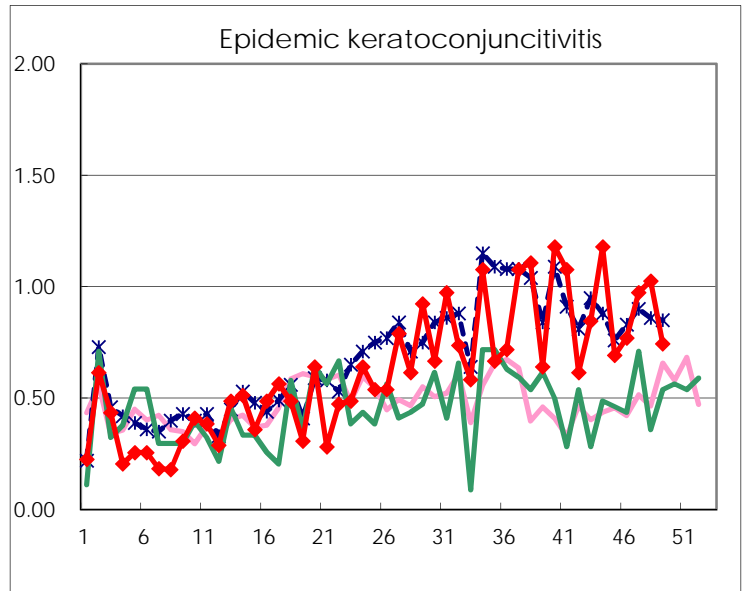
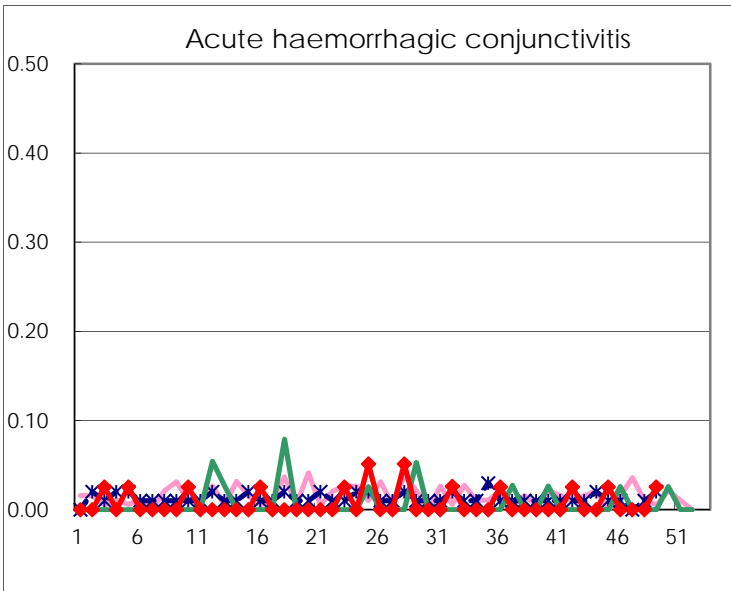
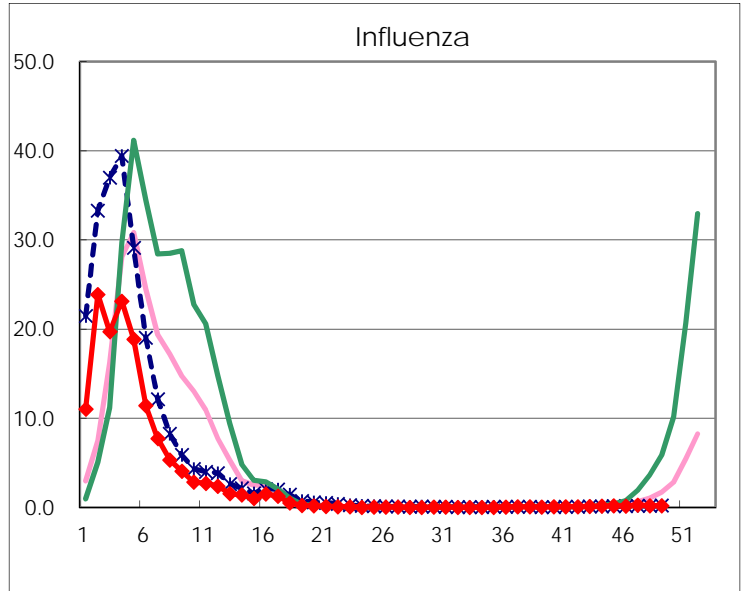
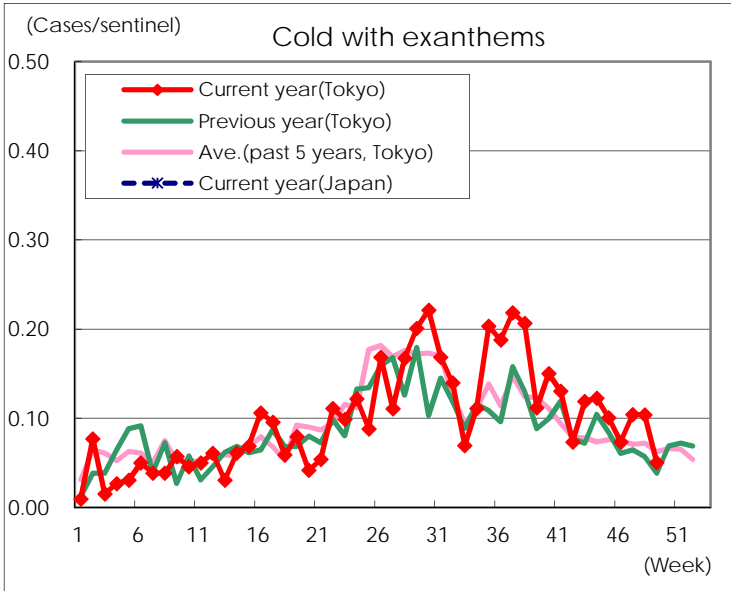
Diseases	Tokyo				
	46th	47th	48th	49th	/sentinel
Respiratory syncytial virus infection	310	335	310	350	1.35
Pharyngoconjunctival fever	89	109	98	121	0.47
Group A streptococcal pharyngitis	655	722	643	848	3.27
Infectious gastroenteritis	1,871	2,063	1,974	3,117	12.03
Chickenpox	142	140	167	213	0.82
Hand, foot, and mouth disease	57	97	56	42	0.16
Erythema infectiosum	89	131	94	124	0.48
Exanthem subitum	143	160	137	142	0.55
Pertussis	8	12	6	2	0.01
Herpangina	10	11	13	15	0.06
Mumps	141	147	171	155	0.60
Kawasaki disease	3	5	3	6	0.02
Cold with exanthems	19	27	27	13	0.05
Influenza	61	99	75	79	0.19
Acute hemorrhagic conjunctivitis				1	0.03
Epidemic keratoconjunctivitis	30	38	40	29	0.74
Bacterial meningitis				2	0.08
Aseptic meningitis	1	6	1	1	0.04
Mycoplasma pneumonia	40	33	29	40	1.60
Chlamydial pneumonia (excluding psittacosis)	3	4		2	0.08
Infectious gastroenteritis (only by Rotavirus)	1			2	0.08
Influenza-Associated Hospitalizations	1	2	1	2	0.08

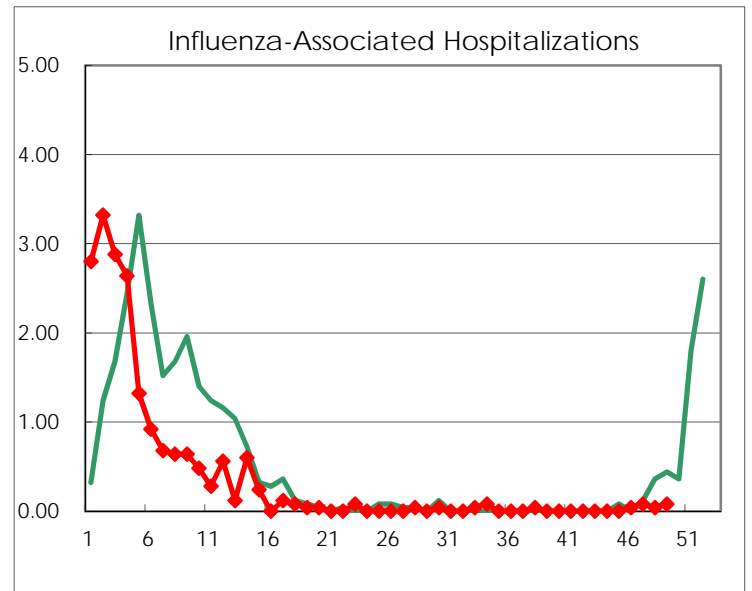
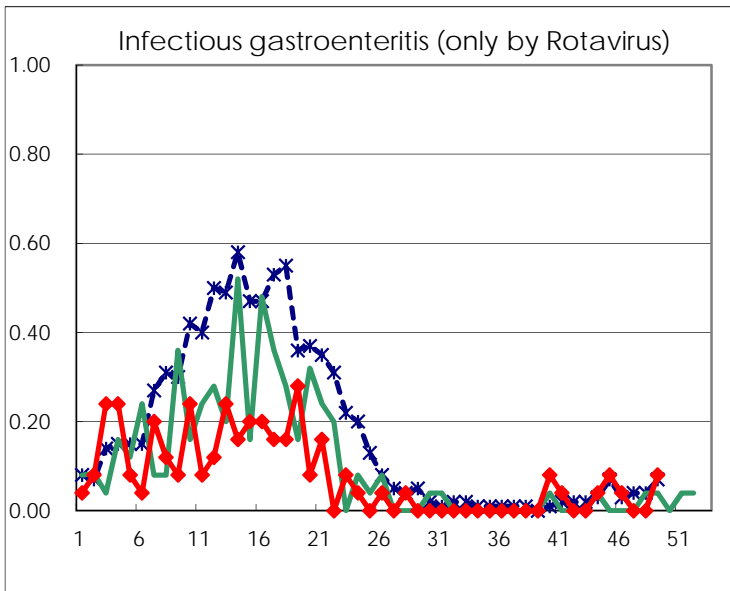
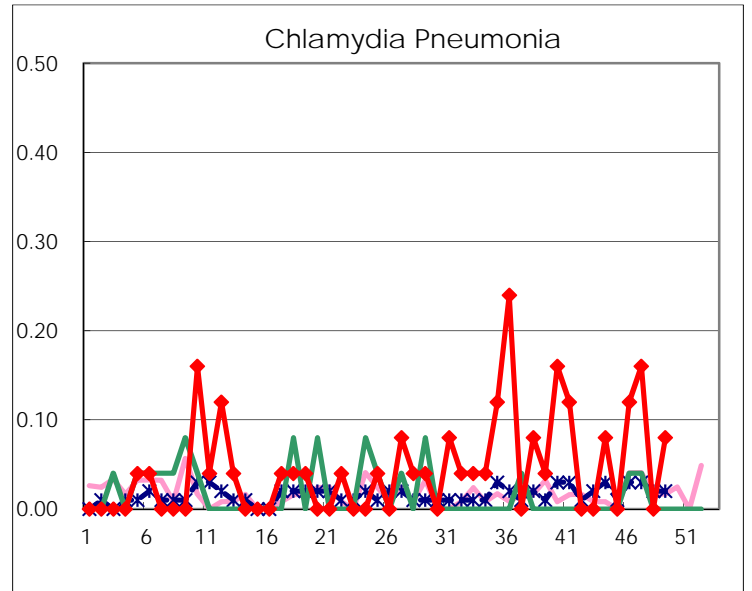
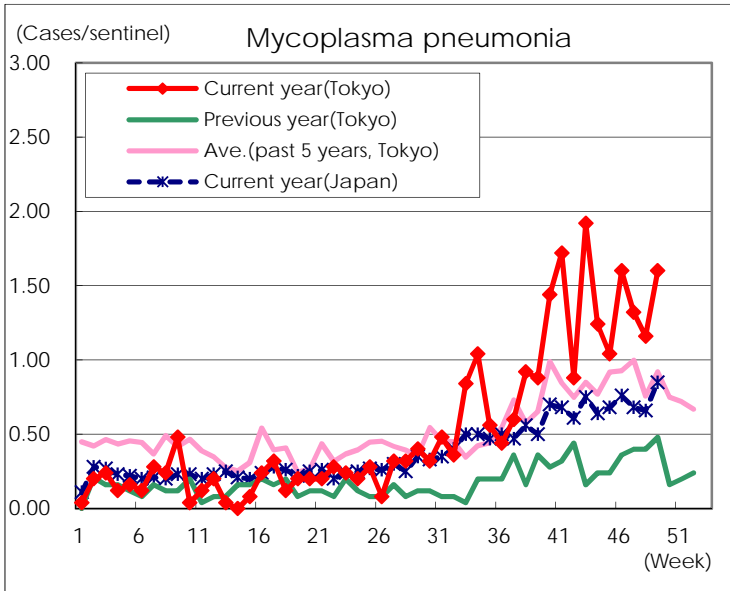
(Blank means 0.)

Disease Trend Graph (weekly reported cases per sentinel in comparison)









Number of sentinel facilities for weekly reporting		
Types of sentinels	Number of sentinels	Sentinels having reported
Pediatric	264	259
Influenza	419	413
Ophthalmic	39	39
Specially-designated	25	25