

25 December 2015 / Number 51

Surveillance System in Tokyo, Japan

The infectious diseases which all physicians must report

All physicians must report to health centers the incidence of the diseases which are shown at page one. Health centers electronically report the individual cases to Tokyo Metropolitan Infectious Disease Surveillance Center.

The infectious diseases required to be reported by the sentinels

The numbers of patients who visit the sentinel clinics or hospitals during a week are reported to health centers in Tokyo. And they electronically report the numbers to Tokyo Metropolitan Infectious Disease Surveillance Center. We have about 500 sentinel clinics and hospitals in Tokyo.

Tokyo Metropolitan Institute of Public Health

TEL:81-3-3363-3213 FAX:81-3-5332-7365

e-mail:www@tokyo-eiken.go.jp

URL:idsc.tokyo-eiken.go.jp/

Number of patients with the diseases which all physicians must report

Category	Diseases	Tokyo					Japan	
		48th	49th	50th	51st	Cum 2015	51st	Cum 2015
I	Ebola hemorrhagic fever							
	Crimean-Congo hemorrhagic fever							
	Smallpox							
	South American hemorrhagic fever							
	Plague							
	Marburg disease							
	Lassa fever							
II	Acute poliomyelitis							
	Tuberculosis	68	57	68	56	3,457	328	23,193
	Diphtheria							
	Severe Acute Respiratory Syndrome(SARS)							
	Middle East Respiratory Syndrome (MERS)							
	Avian influenza H5N1							
	Avian influenza H7N9							
III	Cholera					1		6
	Shigellosis	1				53	1	154
	Enterohemorrhagic Escherichia coli infection	1	5	2	3	334	22	3,538
	Typhoid fever	1				13	1	35
	Paratyphoid fever		1			9		31
IV	Hepatitis E		1	3	1	34	11	199
	West Nile fever							
	Hepatitis A		2			40	3	239
	Echinococcosis					1		22
	Yellow fever							
	Psittacosis							5
	Omsk hemorrhagic fever							
	Relapsing fever							4
	Kyasanur forest disease							
	Q fever							
	Rabies							
	Coccidioidomycosis					2		3
	Monkeypox							
	Severe Fever with Thrombocytopenia Syndrome							60
	Hemorrhagic fever with renal syndrome							
	Western equine encephalitis							
	Tick-borne encephalitis							
	Anthrax							
	Chikungunya fever	1				7		17
	Scrub typhus(Tsutsugamushi disease)		2	2		13	13	380
	Dengue fever	1		1	5	90	7	286
	Eastern equine encephalitis							
	Avian influenza (excluding H5N1 and H7N9)							
	Nipah virus infection							
	Japanese spotted fever					1	2	211
	Japanese encephalitis							2
	Hantavirus pulmonary syndrome							
	Herpes B virus infection							
	Glanders							
	Brucellosis					2		5
	Venezuelan equine encephalitis							
	Hendra virus infection							
Epidemic typhus								
Botulism							1	
Malaria					16		40	
Tularemia							2	
Lyme disease					2		10	
Lyssavirus infection(excluding rabies)								
Rift valley fever								
Melioidosis					1		1	
Legionellosis	4	2	3	3	149	27	1,557	
Leptospirosis					10		31	
	Rocky mountain spotted fever							

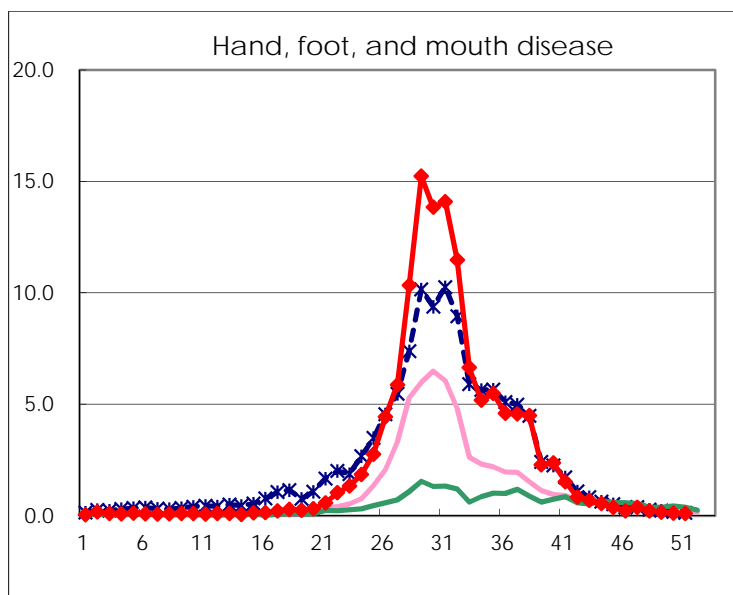
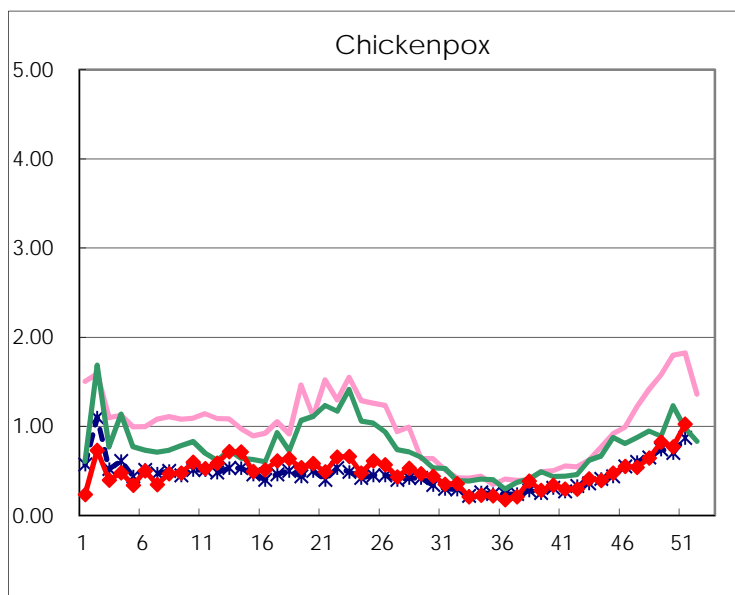
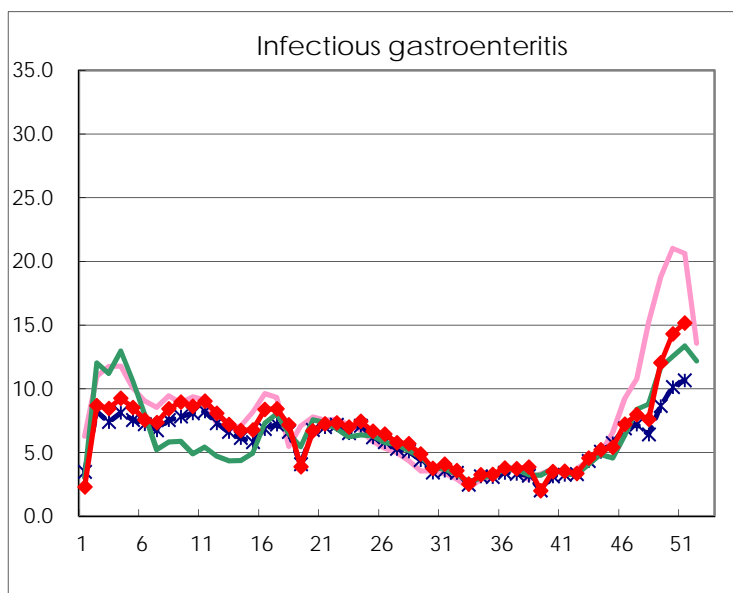
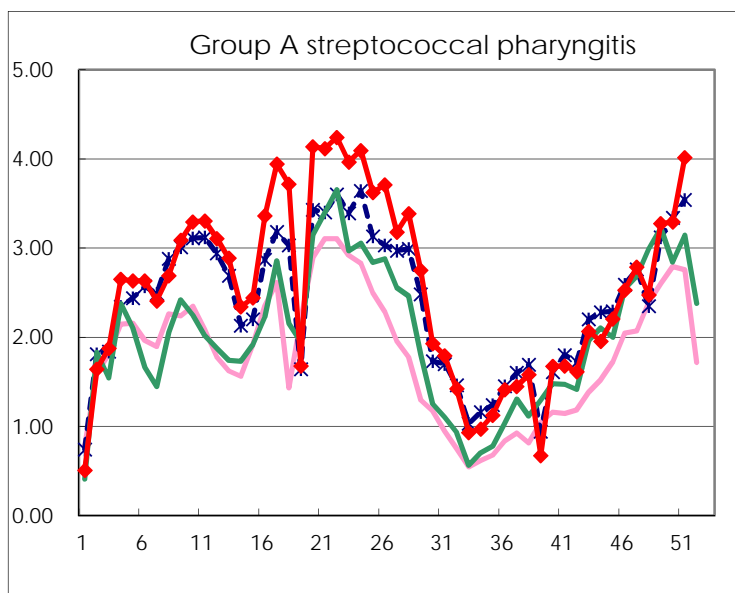
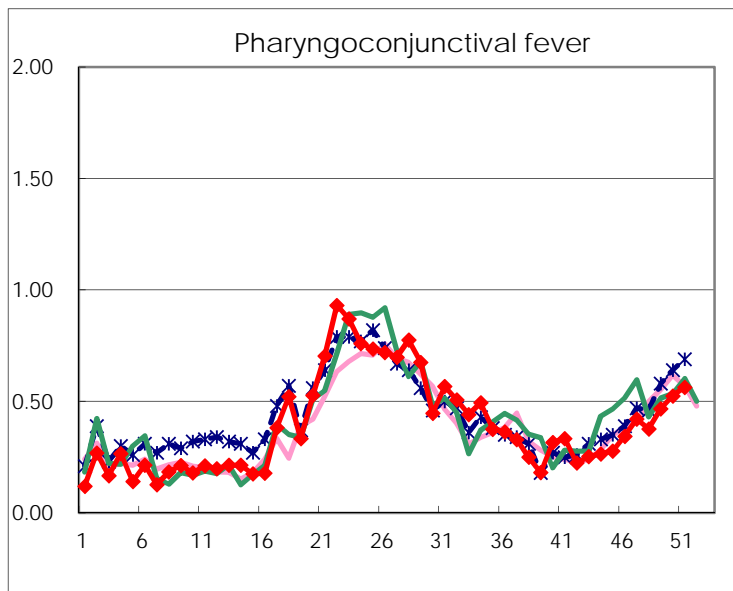
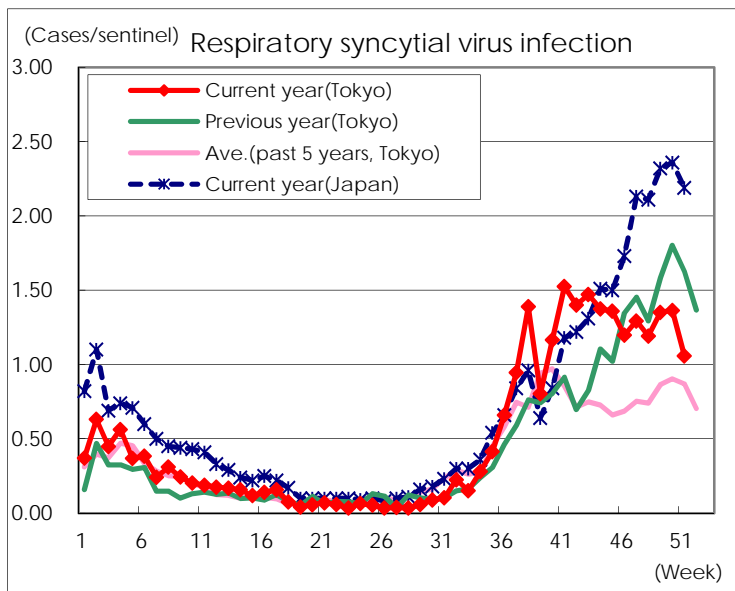
Category	Diseases	Tokyo					Japan	
		48th	49th	50th	51st	Cum 2015	51st	Cum 2015
V	Amebiasis	4	5	6	4	196	13	1,054
	Viral hepatitis(excluding hepatitis A and E)	1		1	1	50	2	241
	CRE infection	5	6	4	5	228	18	1,607
	Acute encephalitis(excluding JE and WNE)					44	4	482
	Cryptosporidiosis					3		15
	Creutzfeldt-Jakob disease		1			24	2	181
	Severe invasive streptococcal infections(TSLS)	1		1	1	62	6	416
	Acquired immunodeficiency syndrome (AIDS)	8	9	16	8	421	20	1,373
	Giardiasis				1	19	1	77
	Invasive <i>Haemophilus influenzae</i> disease	2			1	28	6	237
	Invasive meningococcal disease	1				8	1	30
	Invasive pneumococcal disease	3	3	9	10	311	55	2,245
	Varicella (limited to hospitalized case)	3	1	3	1	53	2	296
	Congenital rubella syndrome							
	Syphilis	17	23	35	19	1,007	47	2,556
	Disseminated cryptococcosis		1			11	3	114
	Tetanus					2		116
	Vancomycin-resistant <i>S. aureus</i> infection							
	Vancomycin-resistant <i>Enterococcus</i> infection					2	2	62
	Rubella		1			33		158
Measles		1			10		35	
MDRA infection	2			2	12	2	36	

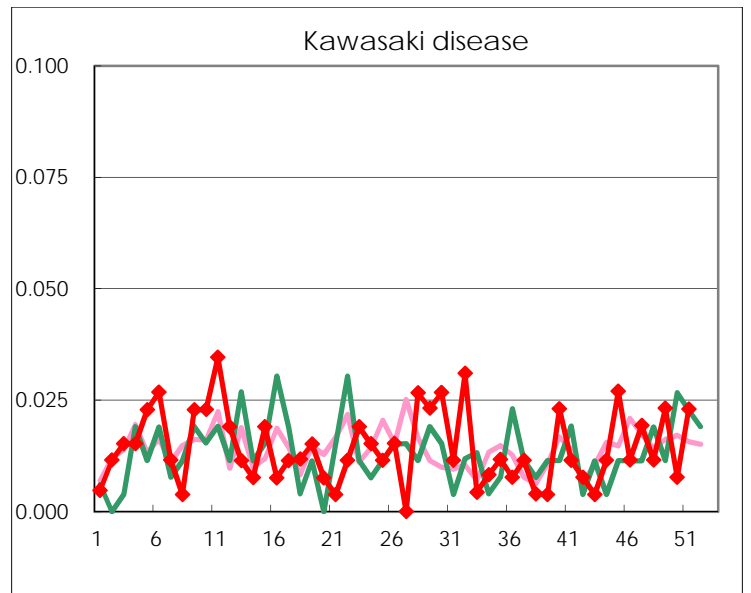
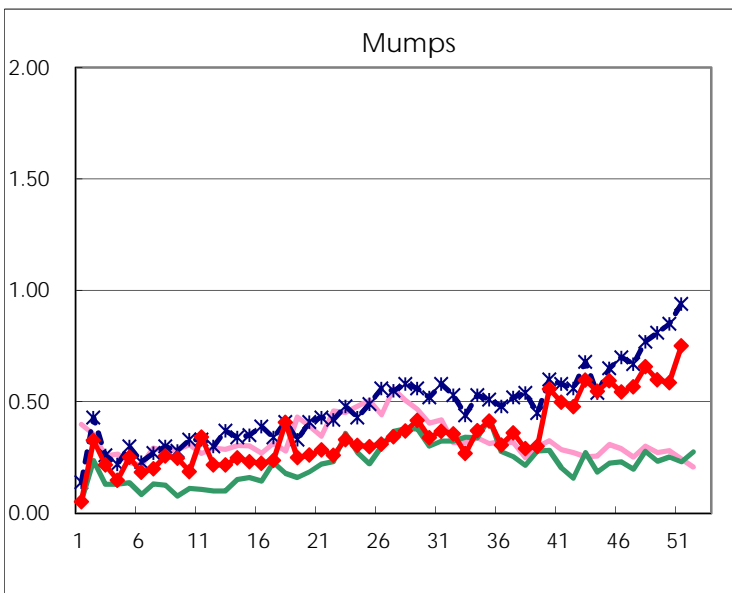
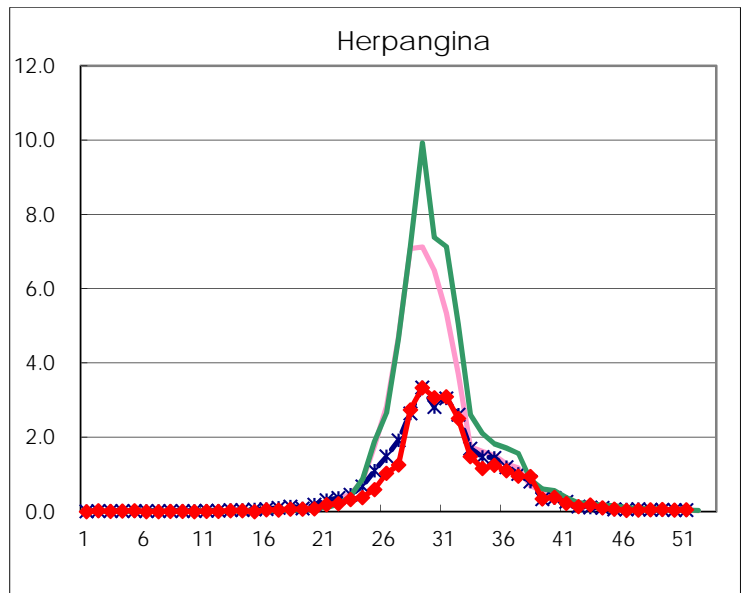
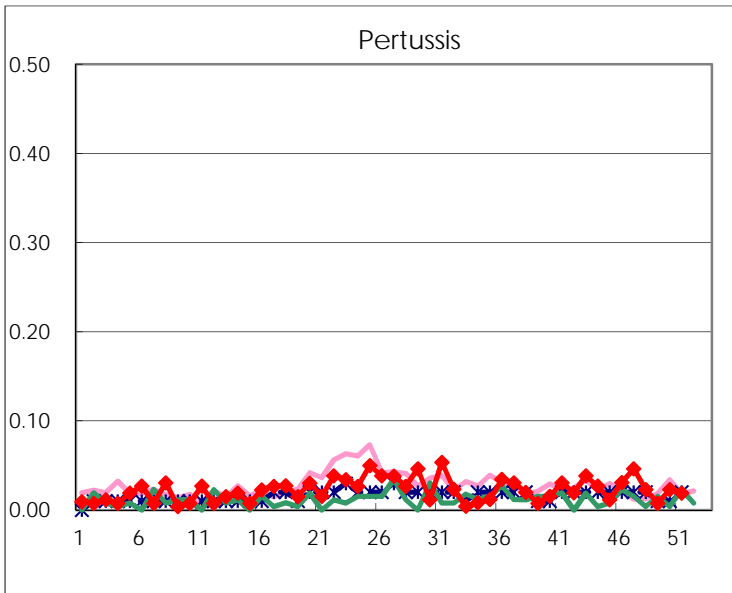
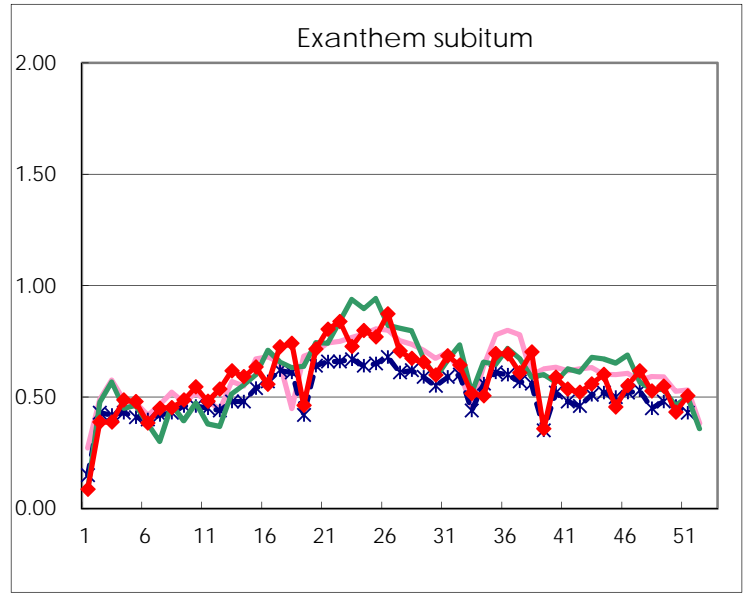
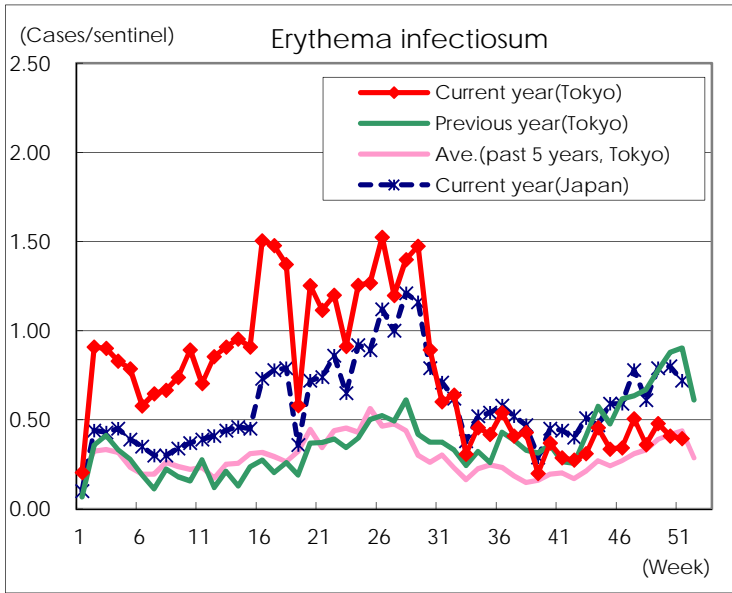
Number of patients with the diseases to be reported
by the designated clinics and hospitals

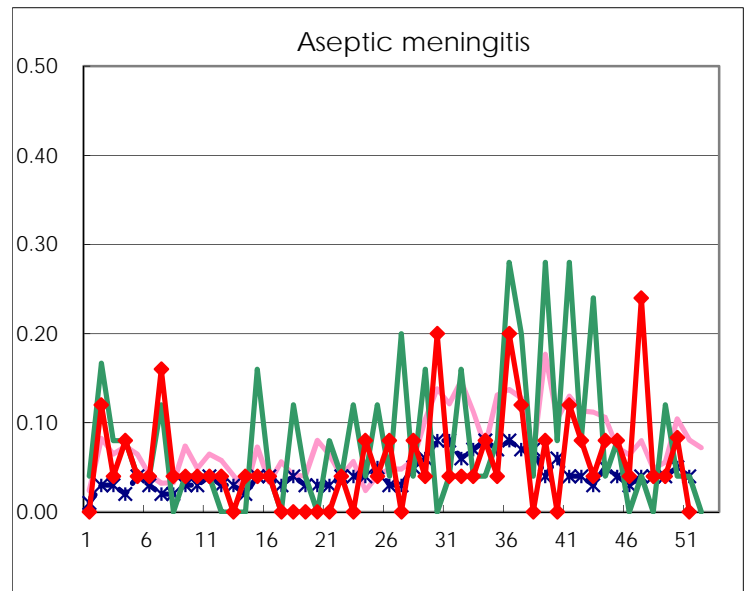
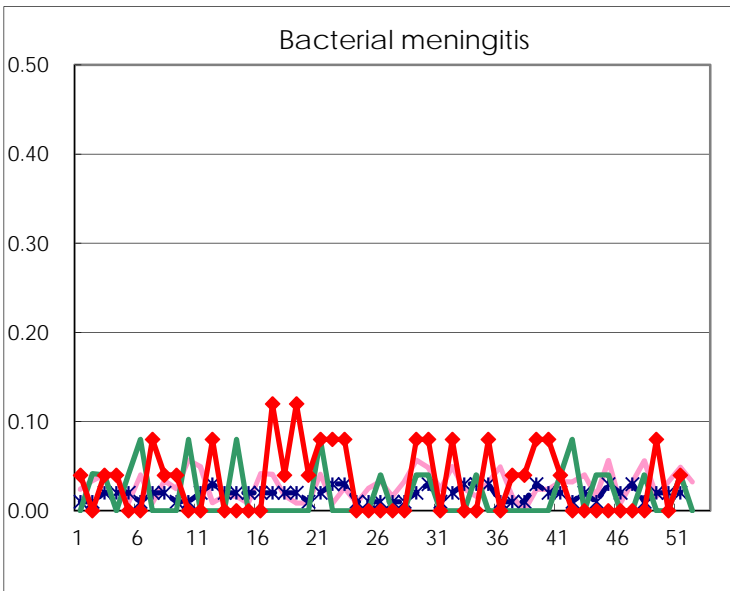
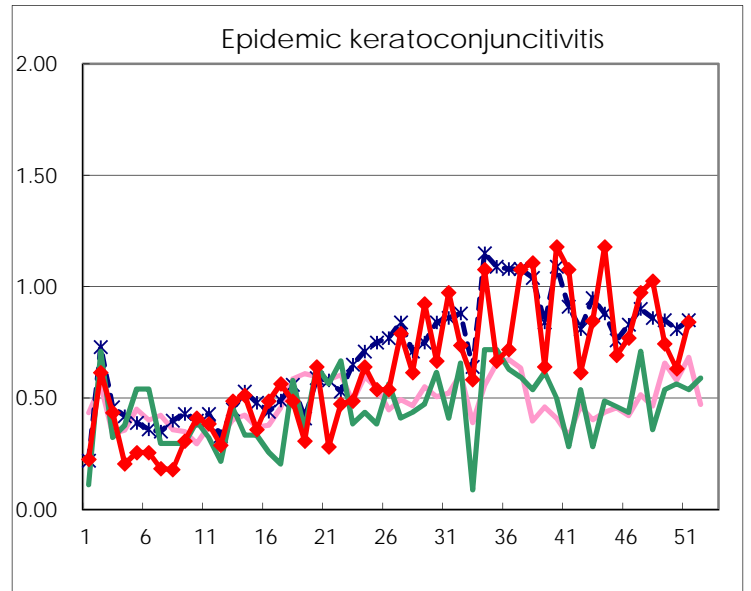
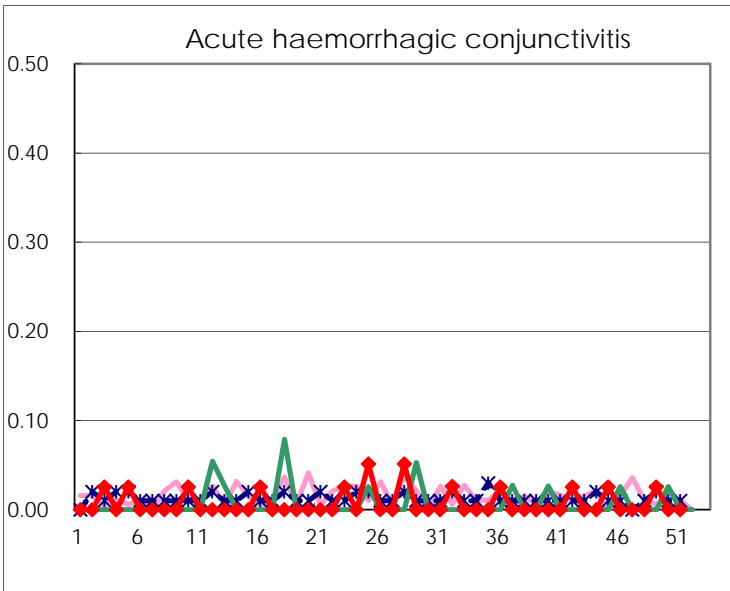
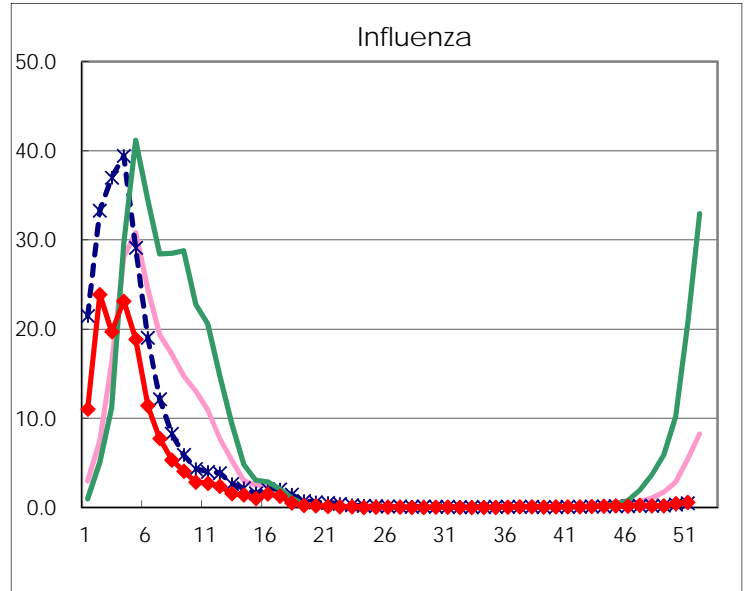
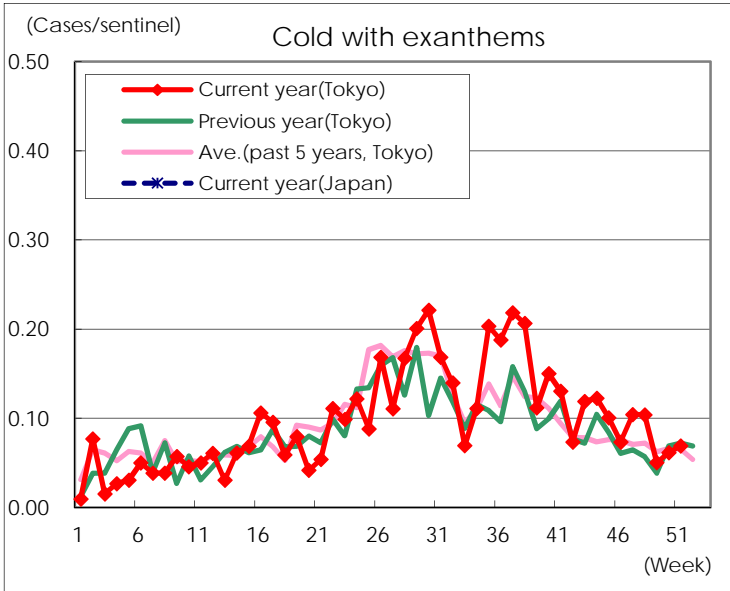
Diseases	Tokyo				
	48th	49th	50th	51st	/sentinel
Respiratory syncytial virus infection	310	350	356	276	1.06
Pharyngoconjunctival fever	98	121	137	147	0.56
Group A streptococcal pharyngitis	643	848	859	1,048	4.02
Infectious gastroenteritis	1,974	3,117	3,734	3,957	15.16
Chickenpox	167	213	201	267	1.02
Hand, foot, and mouth disease	56	42	30	27	0.10
Erythema infectiosum	94	124	107	103	0.39
Exanthem subitum	137	142	113	132	0.51
Pertussis	6	2	6	5	0.02
Herpangina	13	15	11	13	0.05
Mumps	171	155	153	196	0.75
Kawasaki disease	3	6	2	6	0.02
Cold with exanthems	27	13	16	18	0.07
Influenza	75	79	181	231	0.56
Acute hemorrhagic conjunctivitis		1			
Epidemic keratoconjunctivitis	40	29	24	32	0.84
Bacterial meningitis		2		1	0.04
Aseptic meningitis	1	1	2		
<i>Mycoplasma pneumoniae</i>	29	40	30	32	1.28
<i>Chlamydial pneumoniae</i> (excluding psittacosis)		2	2	1	0.04
Infectious gastroenteritis (only by Rotavirus)		2	1	1	0.04
Influenza-Associated Hospitalizations	1	2		2	0.08

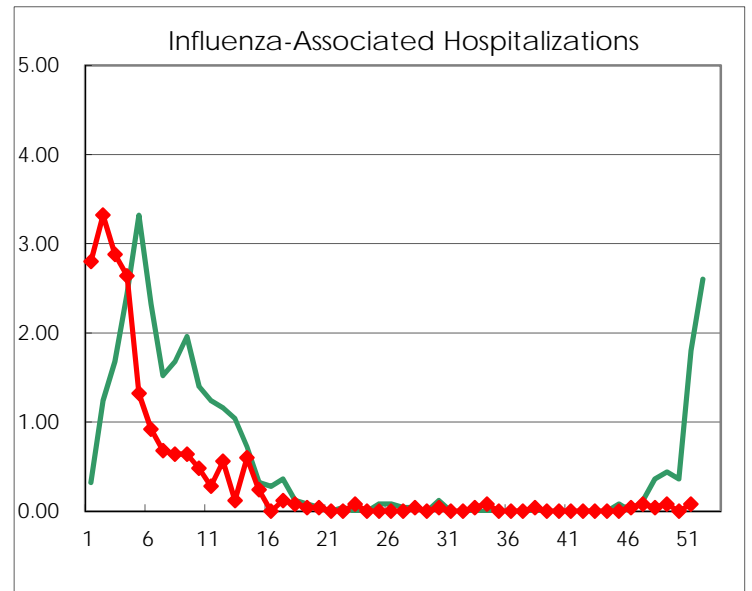
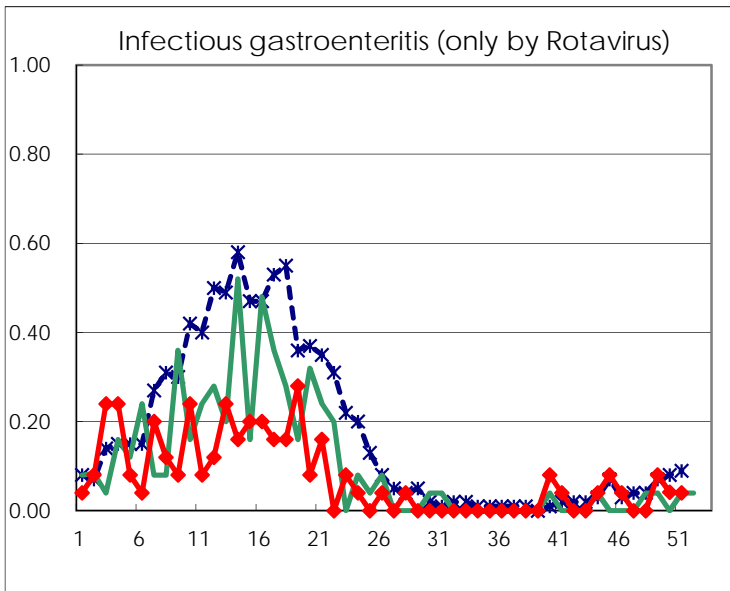
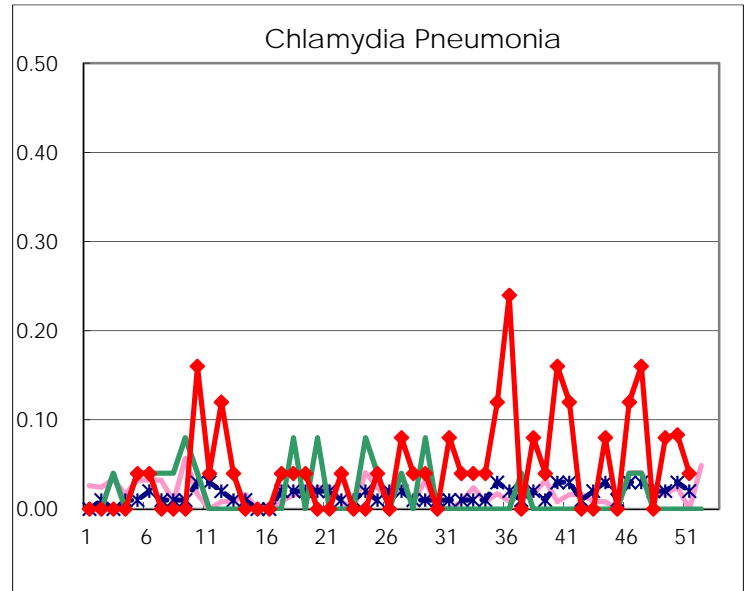
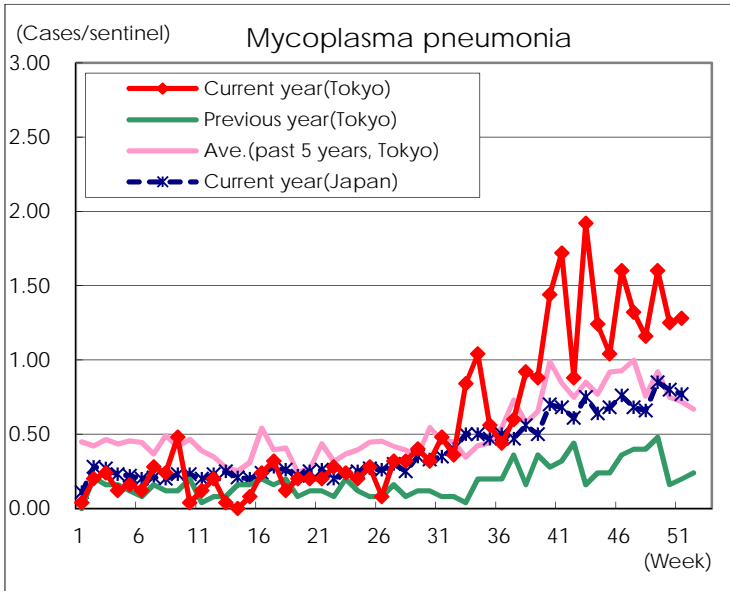
(Blank means 0.)

Disease Trend Graph (weekly reported cases per sentinel in comparison)









Number of sentinel facilities for weekly reporting		
Types of sentinels	Number of sentinels	Sentinels having reported
Pediatric	264	261
Influenza	419	411
Ophthalmic	39	38
Specially-designated	25	25