

6 January 2016 / Number 52

Surveillance System in Tokyo, Japan

The infectious diseases which all physicians must report

All physicians must report to health centers the incidence of the diseases which are shown at page one. Health centers electronically report the individual cases to Tokyo Metropolitan Infectious Disease Surveillance Center.

The infectious diseases required to be reported by the sentinels

The numbers of patients who visit the sentinel clinics or hospitals during a week are reported to health centers in Tokyo. And they electronically report the numbers to Tokyo Metropolitan Infectious Disease Surveillance Center. We have about 500 sentinel clinics and hospitals in Tokyo.

Tokyo Metropolitan Institute of Public Health

TEL:81-3-3363-3213 FAX:81-3-5332-7365

e-mail:www@tokyo-eiken.go.jp

URL:idsc.tokyo-eiken.go.jp/

Number of patients with the diseases which all physicians must report

Category	Diseases	Tokyo					Japan	
		49th	50th	51st	52nd	Cum 2015	52nd	Cum 2015
I	Ebola hemorrhagic fever							
	Crimean-Congo hemorrhagic fever							
	Smallpox							
	South American hemorrhagic fever							
	Plague							
	Marburg disease							
	Lassa fever							
II	Acute poliomyelitis							
	Tuberculosis	57	69	57	46	3,504	372	23,695
	Diphtheria							
	Severe Acute Respiratory Syndrome(SARS)							
	Middle East Respiratory Syndrome (MERS)							
	Avian influenza H5N1							
	Avian influenza H7N9							
III	Cholera					1	1	7
	Shigellosis					53	2	156
	Enterohemorrhagic Escherichia coli infection	5	2	3	1	335	12	3,553
	Typhoid fever				1	14	1	36
	Paratyphoid fever	1				9		31
IV	Hepatitis E	1	3	1	5	39	10	210
	West Nile fever							
	Hepatitis A	2				40		240
	Echinococcosis					1		23
	Yellow fever							
	Psittacosis							5
	Omsk hemorrhagic fever							
	Relapsing fever							4
	Kyasanur forest disease							
	Q fever							
	Rabies							
	Coccidioidomycosis					2		3
	Monkeypox							
	Severe Fever with Thrombocytopenia Syndrome							60
	Hemorrhagic fever with renal syndrome							
	Western equine encephalitis							
	Tick-borne encephalitis							
	Anthrax							
	Chikungunya fever					7		17
	Scrub typhus(Tsutsugamushi disease)	2	2		1	14	25	409
	Dengue fever		1	5	1	91	3	289
	Eastern equine encephalitis							
	Avian influenza (excluding H5N1 and H7N9)							
	Nipah virus infection							
	Japanese spotted fever					1		212
	Japanese encephalitis							2
	Hantavirus pulmonary syndrome							
	Herpes B virus infection							
	Glanders							
	Brucellosis					2		5
	Venezuelan equine encephalitis							
	Hendra virus infection							
Epidemic typhus								
Botulism							1	
Malaria					16	1	41	
Tularemia							2	
Lyme disease					2		10	
Lyssavirus infection(excluding rabies)								
Rift valley fever								
Melioidosis					1		1	
Legionellosis	2	3	3	3	152	17	1,576	
Leptospirosis					10	1	32	
	Rocky mountain spotted fever							

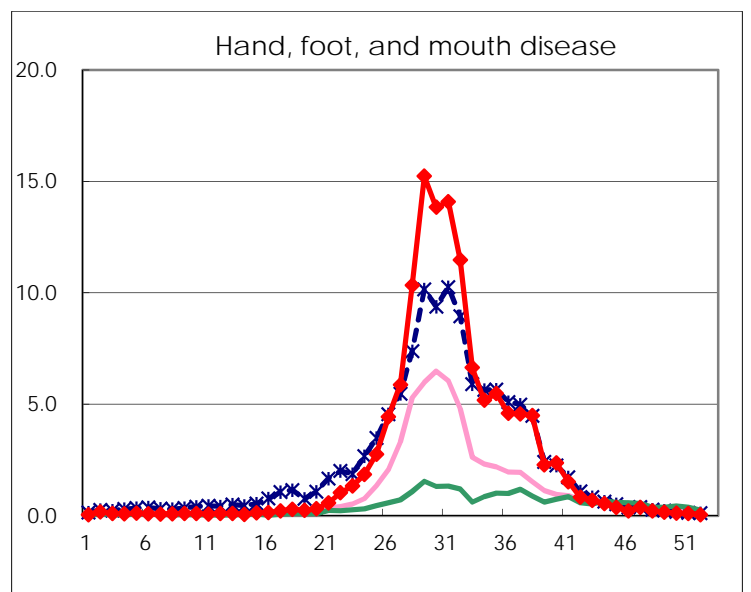
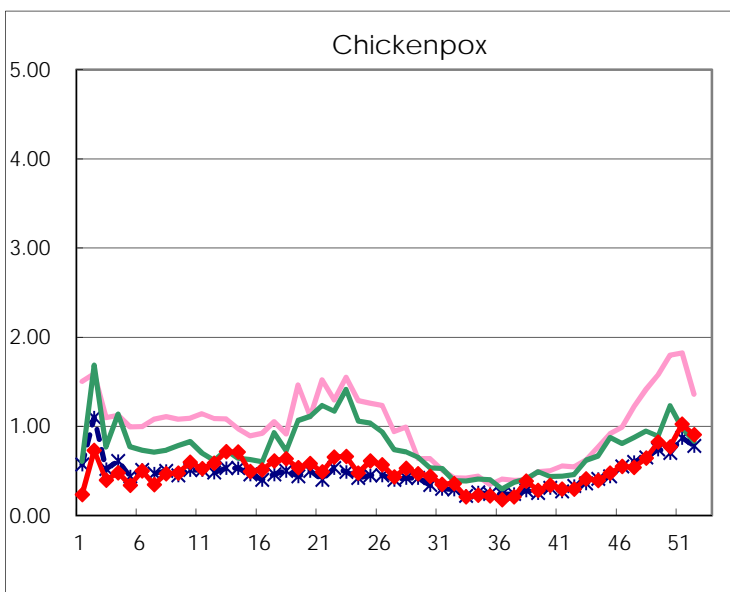
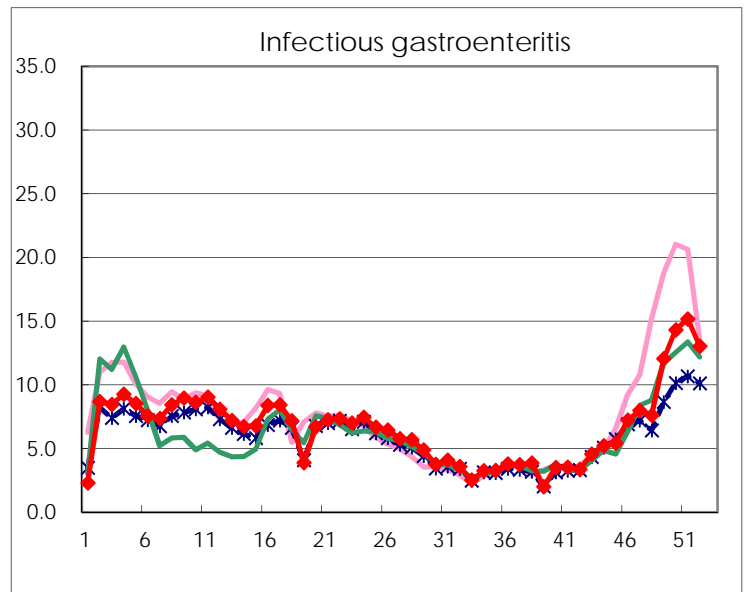
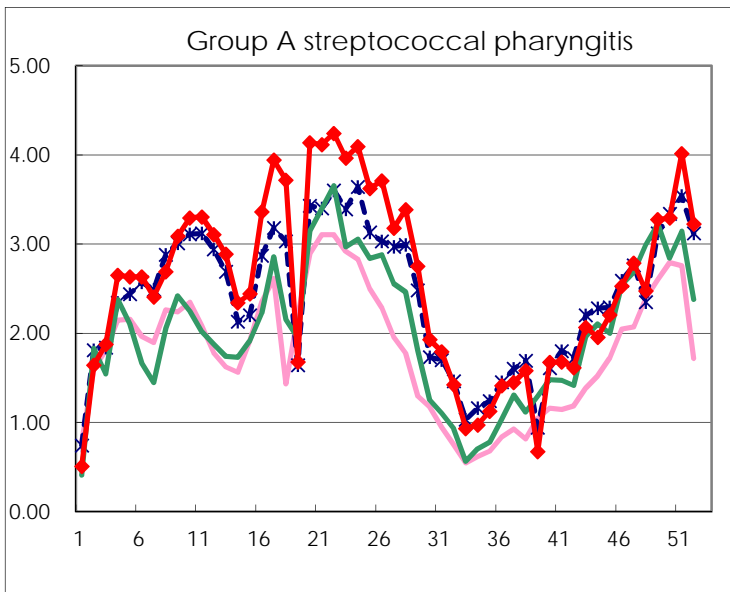
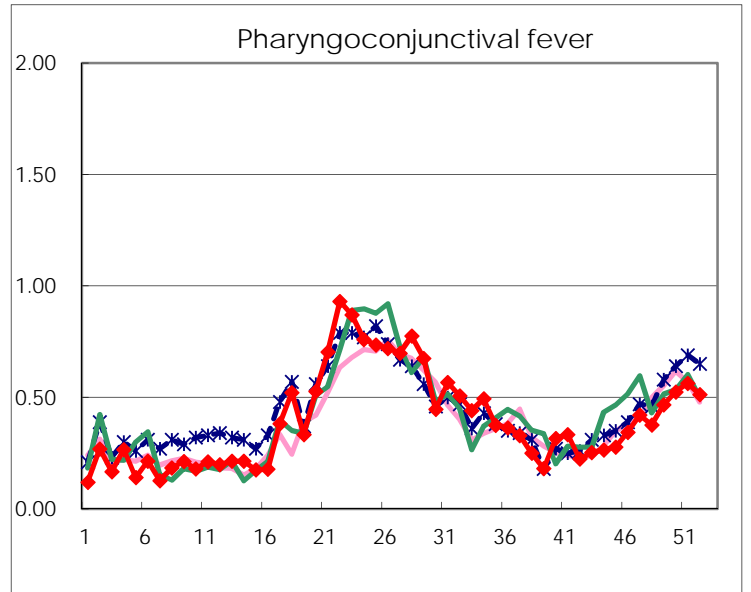
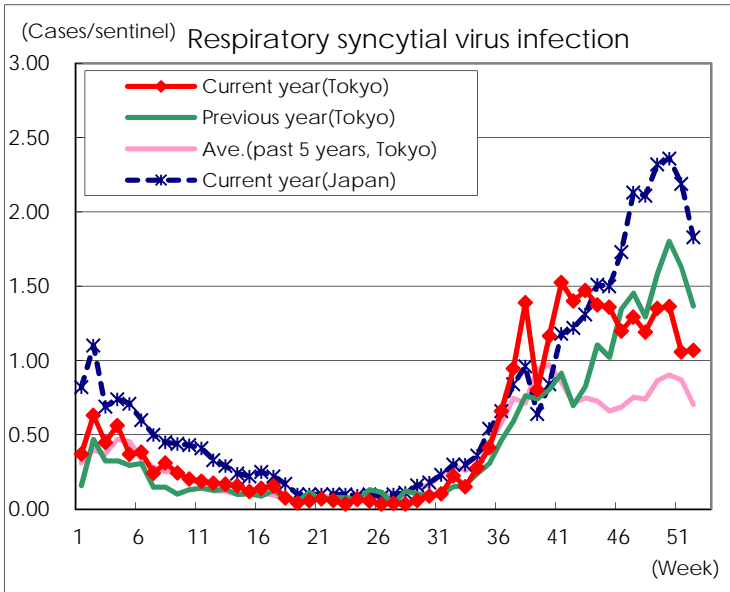
Category	Diseases	Tokyo					Japan	
		49th	50th	51st	52nd	Cum 2015	52nd	Cum 2015
V	Amebiasis	5	6	4	5	201	19	1,084
	Viral hepatitis(excluding hepatitis A and E)		2	1	1	52	5	249
	CRE infection	6	4	5	6	234	17	1,640
	Acute encephalitis(excluding JE and WNE)				2	46	5	490
	Cryptosporidiosis					3		15
	Creutzfeldt-Jakob disease	1				24	3	185
	Severe invasive streptococcal infections(TSLS)		1	1		62	8	425
	Acquired immunodeficiency syndrome (AIDS)	9	16	8	9	430	21	1,408
	Giardiasis			1		19		77
	Invasive <i>Haemophilus influenzae</i> disease			1	1	29	7	247
	Invasive meningococcal disease					8	2	32
	Invasive pneumococcal disease	3	9	11	6	318	60	2,327
	Varicella (limited to hospitalized case)	1	3	1	1	54	4	304
	Congenital rubella syndrome							
	Syphilis	23	35	20	24	1,032	51	2,638
	Disseminated cryptococcosis	1				11	2	116
	Tetanus					2	1	117
	Vancomycin-resistant <i>S. aureus</i> infection							
	Vancomycin-resistant Enterococcus infection					2		64
	Rubella	1				33		162
Measles	1				10		35	
MDRA infection			2	1	13		37	

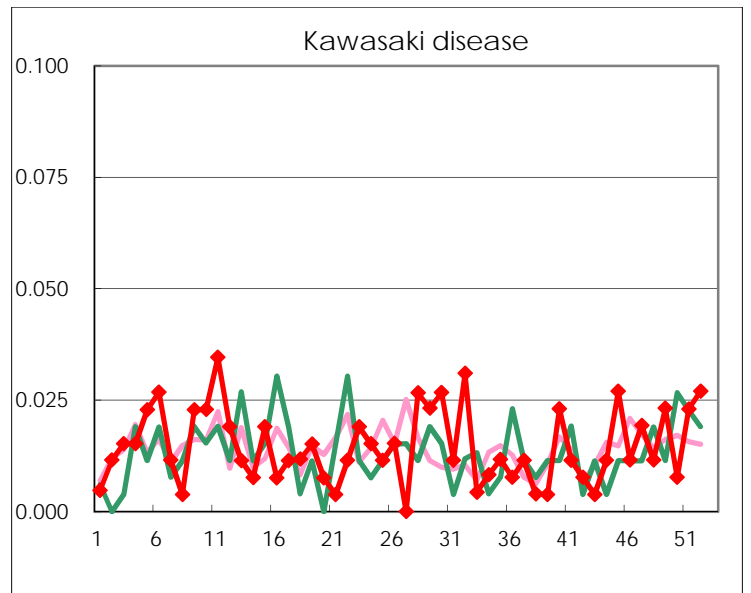
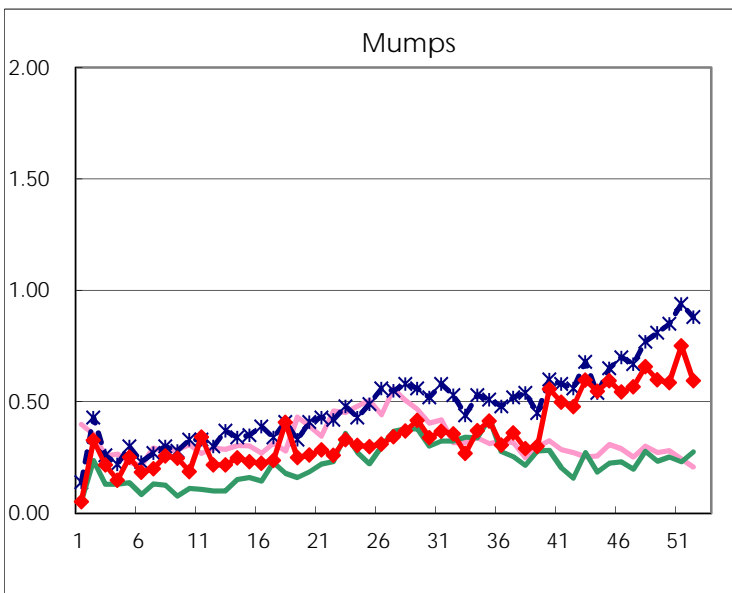
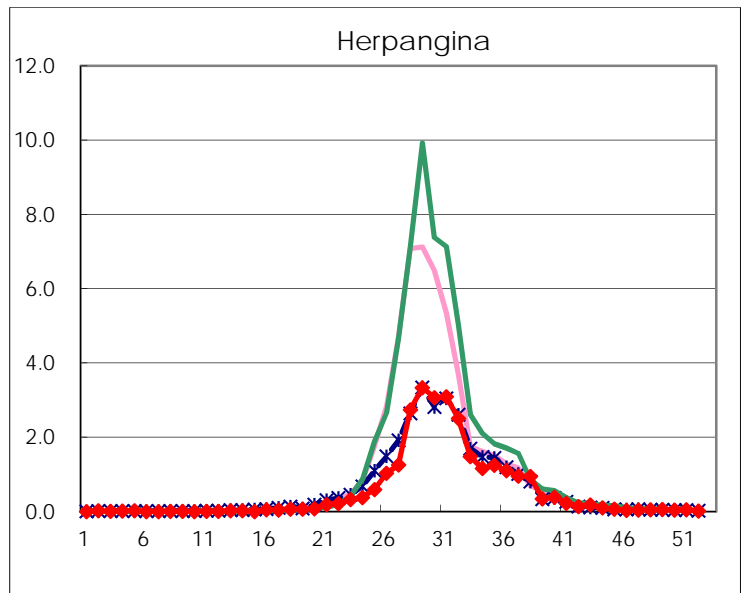
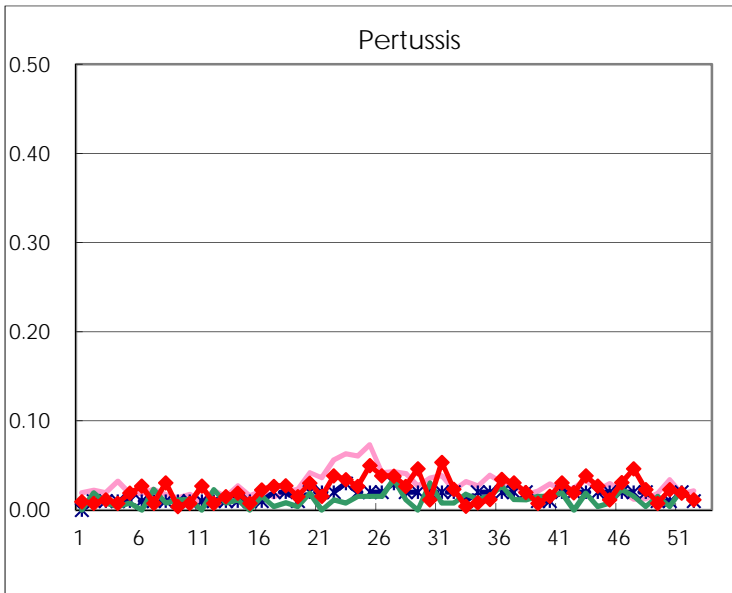
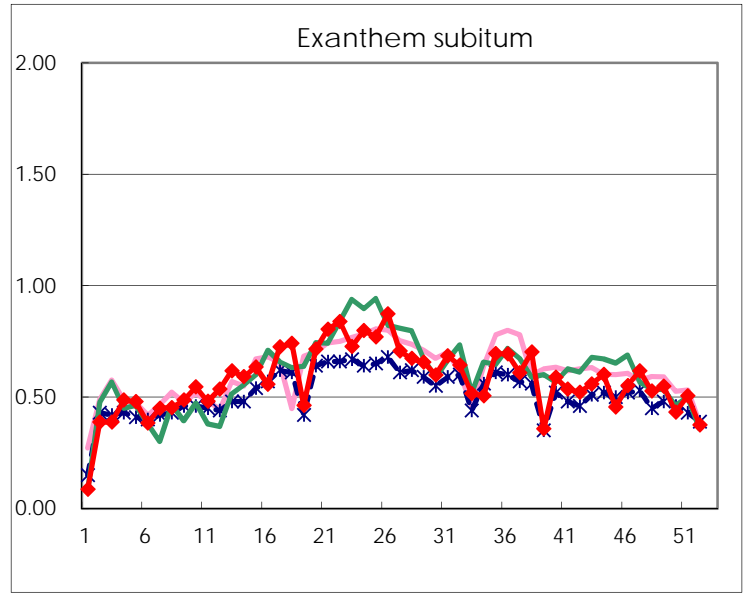
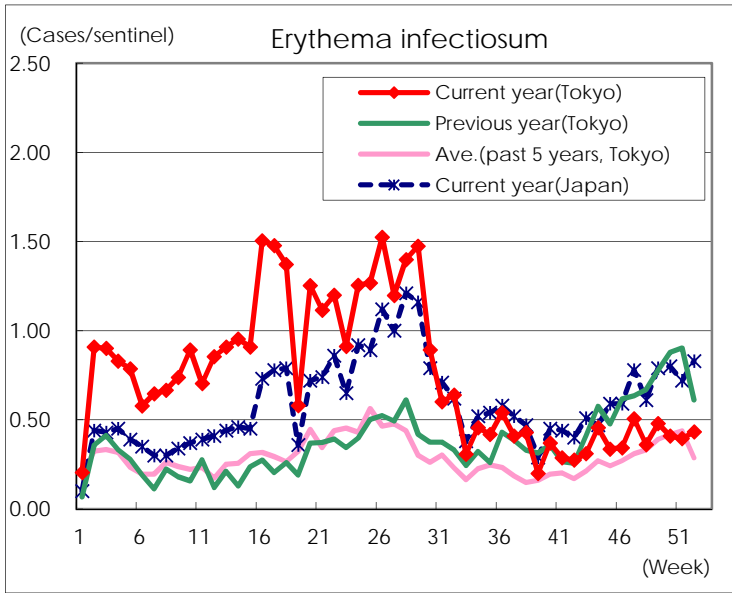
Number of patients with the diseases to be reported
by the designated clinics and hospitals

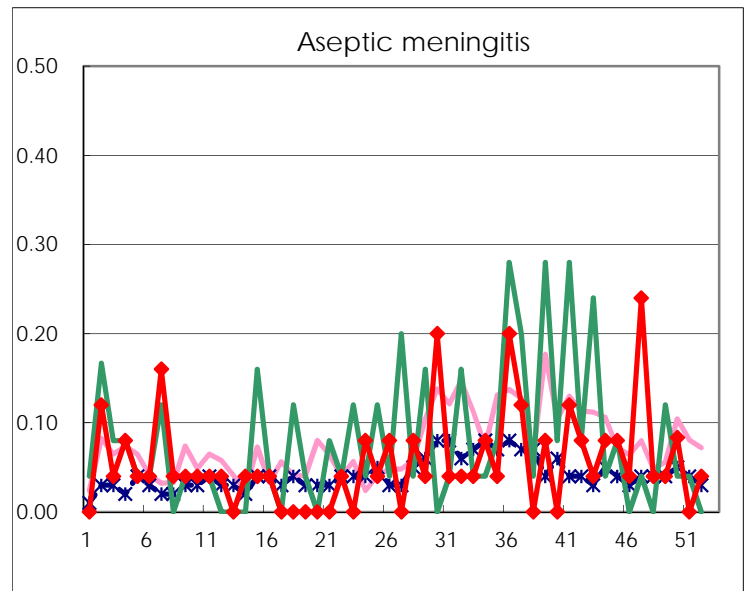
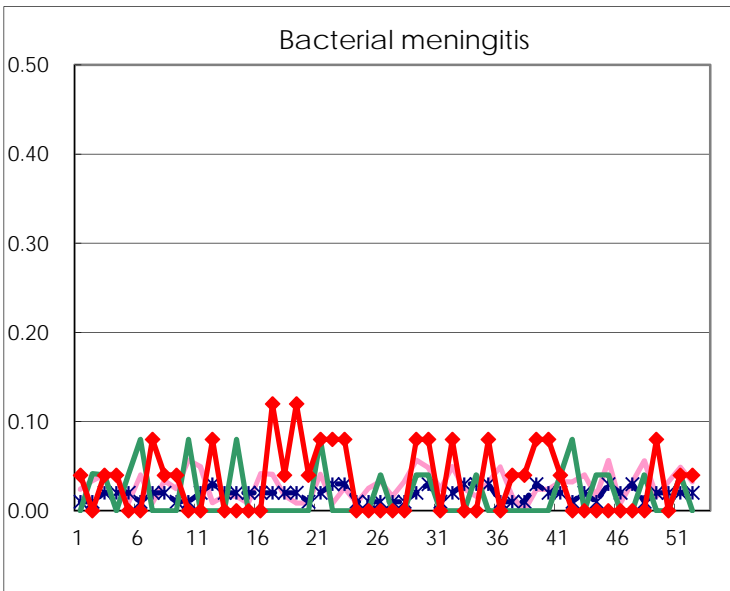
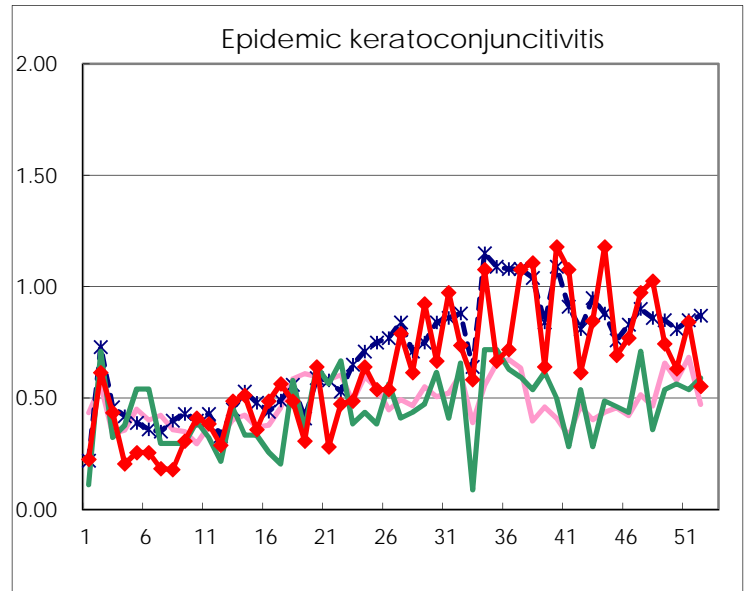
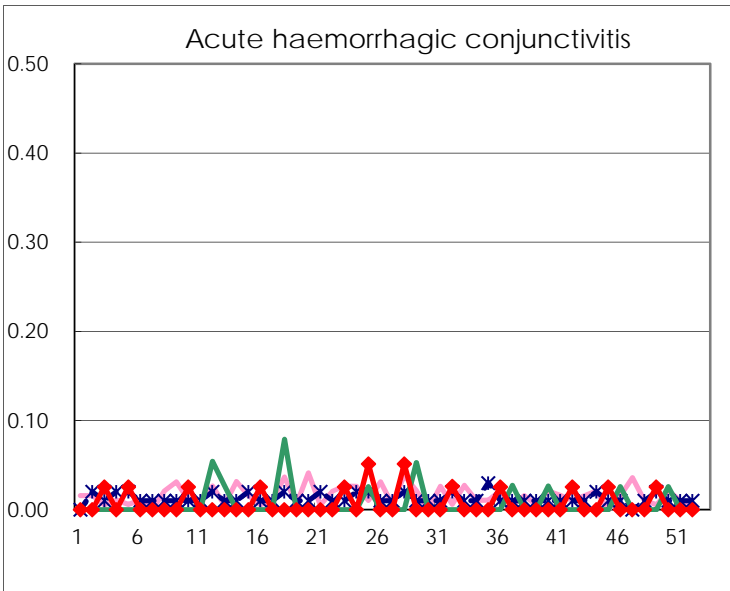
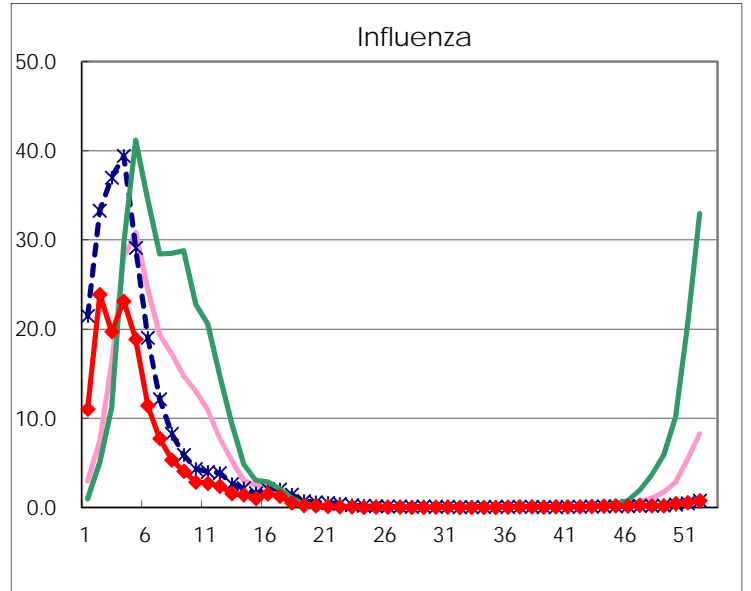
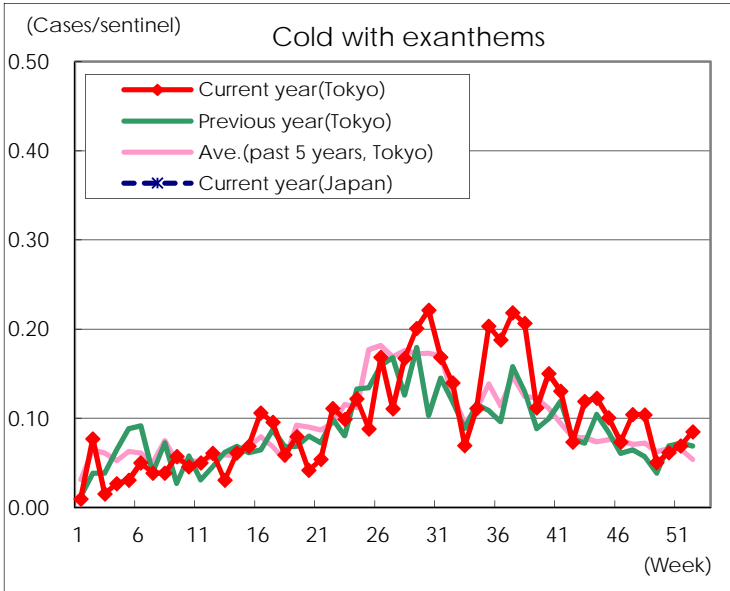
Diseases	Tokyo				
	49th	50th	51st	52nd	/sentinel
Respiratory syncytial virus infection	350	356	276	277	1.07
Pharyngoconjunctival fever	121	137	147	133	0.51
Group A streptococcal pharyngitis	848	859	1,048	835	3.22
Infectious gastroenteritis	3,117	3,734	3,957	3,375	13.03
Chickenpox	213	201	267	234	0.90
Hand, foot, and mouth disease	42	30	27	13	0.05
Erythema infectiosum	124	107	103	112	0.43
Exanthem subitum	142	113	132	97	0.37
Pertussis	2	6	5	3	0.01
Herpangina	15	11	13	5	0.02
Mumps	155	153	196	154	0.59
Kawasaki disease	6	2	6	7	0.03
Cold with exanthems	13	16	18	22	0.08
Influenza	79	181	231	304	0.74
Acute hemorrhagic conjunctivitis	1				
Epidemic keratoconjunctivitis	29	24	32	21	0.55
Bacterial meningitis	2		1	1	0.04
Aseptic meningitis	1	2		1	0.04
Mycoplasma pneumonia	40	30	32	29	1.16
Chlamydial pneumonia (excluding psittacosis)	2	2	1	2	0.08
Infectious gastroenteritis (only by Rotavirus)	2	1	1	2	0.08
Influenza-Associated Hospitalizations	2		2	7	0.28

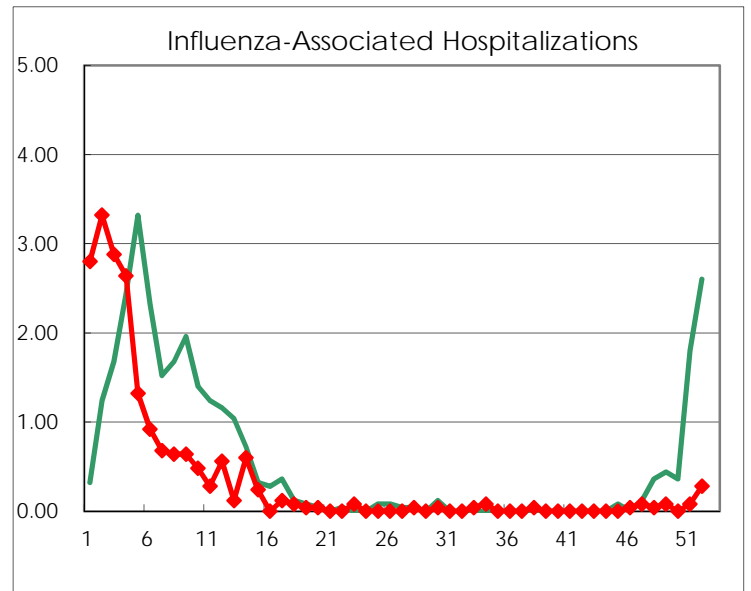
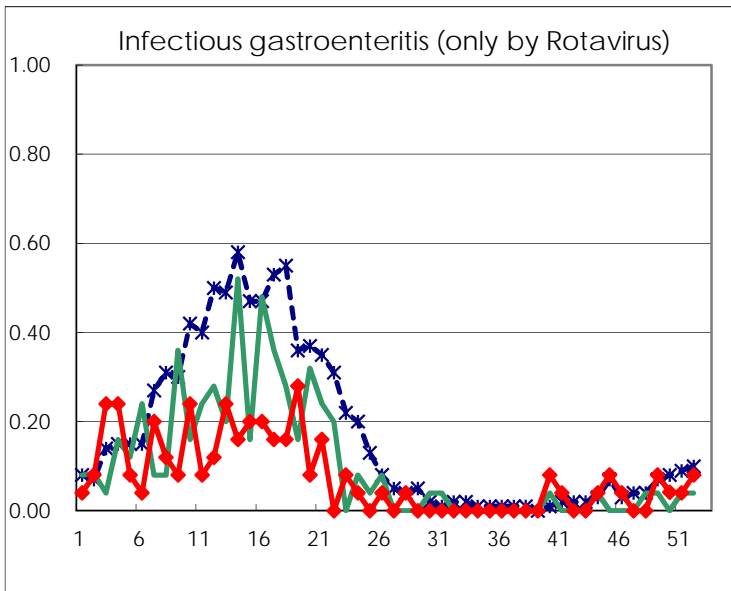
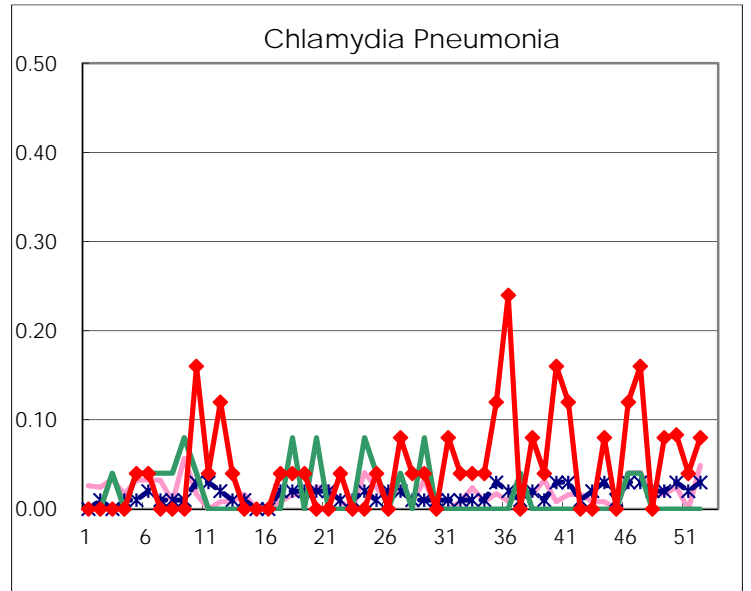
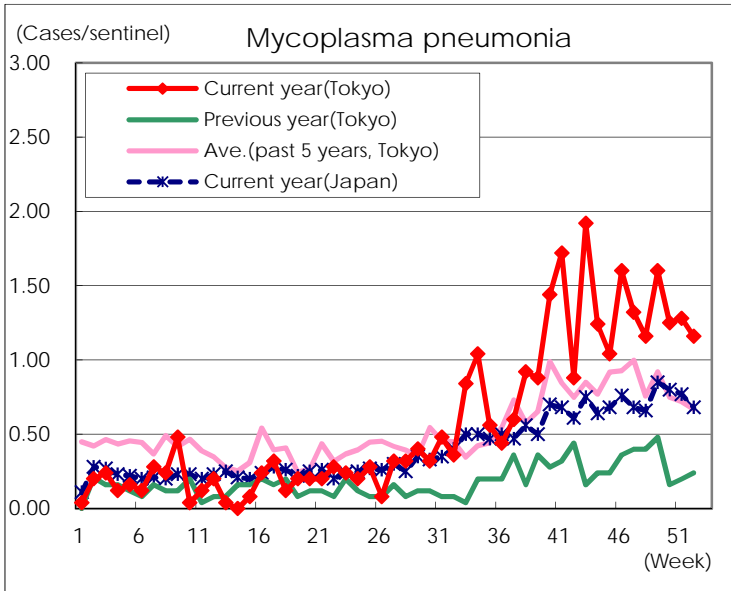
(Blank means 0.)

Disease Trend Graph (weekly reported cases per sentinel in comparison)









Number of sentinel facilities for weekly reporting		
Types of sentinels	Number of sentinels	Sentinels having reported
Pediatric	264	259
Influenza	419	411
Ophthalmic	39	38
Specially-designated	25	25