

## 8 January 2016 / Number 53

### Surveillance System in Tokyo, Japan

The infectious diseases which all physicians must report

All physicians must report to health centers the incidence of the diseases which are shown at page one. Health centers electronically report the individual cases to Tokyo Metropolitan Infectious Disease Surveillance Center.

The infectious diseases required to be reported by the sentinels

The numbers of patients who visit the sentinel clinics or hospitals during a week are reported to health centers in Tokyo. And they electronically report the numbers to Tokyo Metropolitan Infectious Disease Surveillance Center. We have about 500 sentinel clinics and hospitals in Tokyo.

Tokyo Metropolitan Institute of Public Health

TEL:81-3-3363-3213 FAX:81-3-5332-7365

e-mail:[www@tokyo-eiken.go.jp](mailto:www@tokyo-eiken.go.jp)

URL:[idsc.tokyo-eiken.go.jp/](http://idsc.tokyo-eiken.go.jp/)

---

Number of patients with the diseases which all physicians must report

Category	Diseases	Tokyo					Japan	
		50th	51st	52nd	53rd	Cum 2015	53rd	Cum 2015
I	Ebola hemorrhagic fever							
	Crimean-Congo hemorrhagic fever							
	Smallpox							
	South American hemorrhagic fever							
	Plague							
	Marburg disease							
	Lassa fever							
II	Acute poliomyelitis							
	Tuberculosis	70	57	46	33	3,538	150	23,880
	Diphtheria							
	Severe Acute Respiratory Syndrome(SARS)							
	Middle East Respiratory Syndrome (MERS)							
	Avian influenza H5N1							
	Avian influenza H7N9							
III	Cholera					1		7
	Shigellosis					53		156
	Enterohemorrhagic Escherichia coli infection	2	3	1		335	6	3,561
	Typhoid fever			1		14		36
	Paratyphoid fever					9		31
IV	Hepatitis E	3	1	5		39	1	212
	West Nile fever							
	Hepatitis A					40	2	242
	Echinococcosis					1		23
	Yellow fever							
	Psittacosis							5
	Omsk hemorrhagic fever							
	Relapsing fever							4
	Kyasanur forest disease							
	Q fever							
	Rabies							
	Coccidioidomycosis					2		3
	Monkeypox							
	Severe Fever with Thrombocytopenia Syndrome							60
	Hemorrhagic fever with renal syndrome							
	Western equine encephalitis							
	Tick-borne encephalitis							
	Anthrax							
	Chikungunya fever					7		17
	Scrub typhus(Tsutsugamushi disease)	2		1		14	4	415
	Dengue fever	1	5	1	1	92	3	292
	Eastern equine encephalitis							
	Avian influenza (excluding H5N1 and H7N9)							
	Nipah virus infection							
	Japanese spotted fever					1		212
	Japanese encephalitis							2
	Hantavirus pulmonary syndrome							
	Herpes B virus infection							
	Glanders							
	Brucellosis					2		5
	Venezuelan equine encephalitis							
	Hendra virus infection							
Epidemic typhus								
Botulism							1	
Malaria						16	41	
Tularemia							2	
Lyme disease						2	10	
Lyssavirus infection(excluding rabies)								
Rift valley fever								
Melioidosis					1		1	
Legionellosis	3	3	3	1	153	9	1,587	
Leptospirosis					10		32	
	Rocky mountain spotted fever							

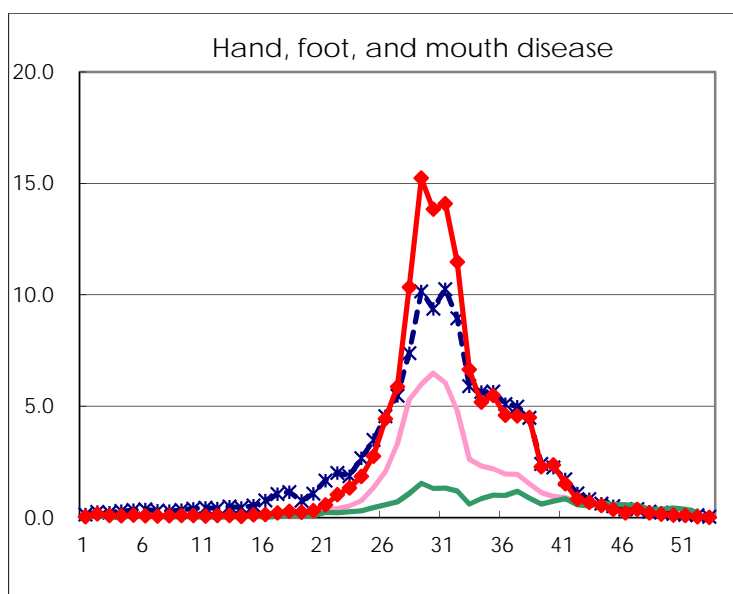
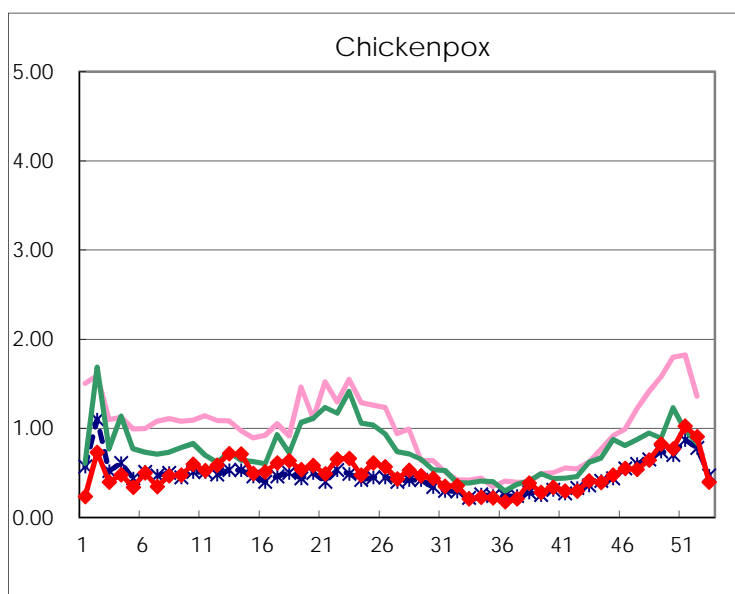
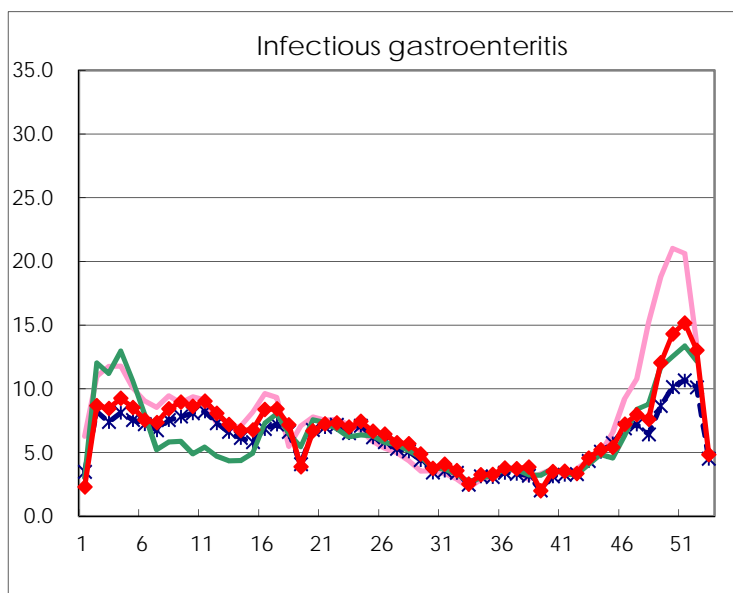
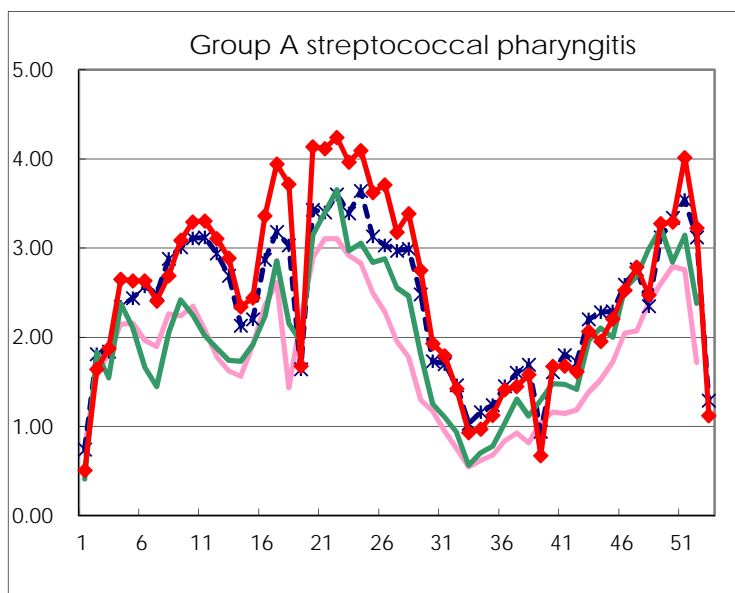
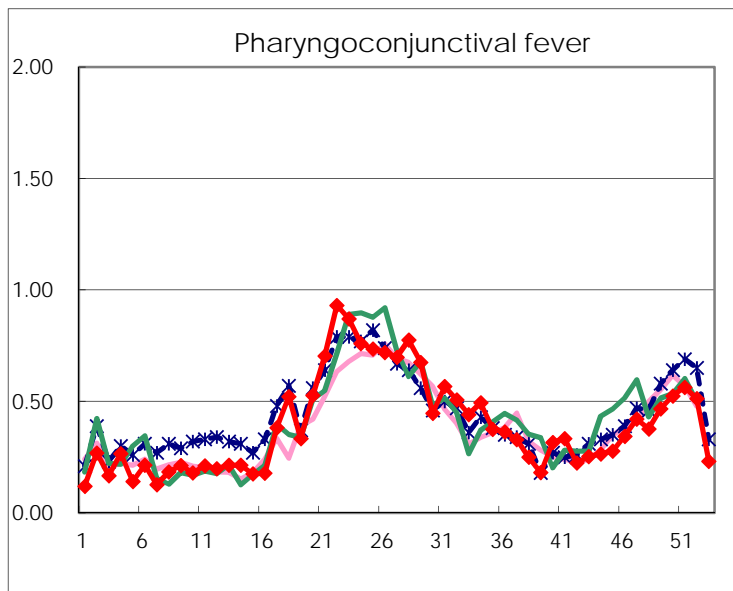
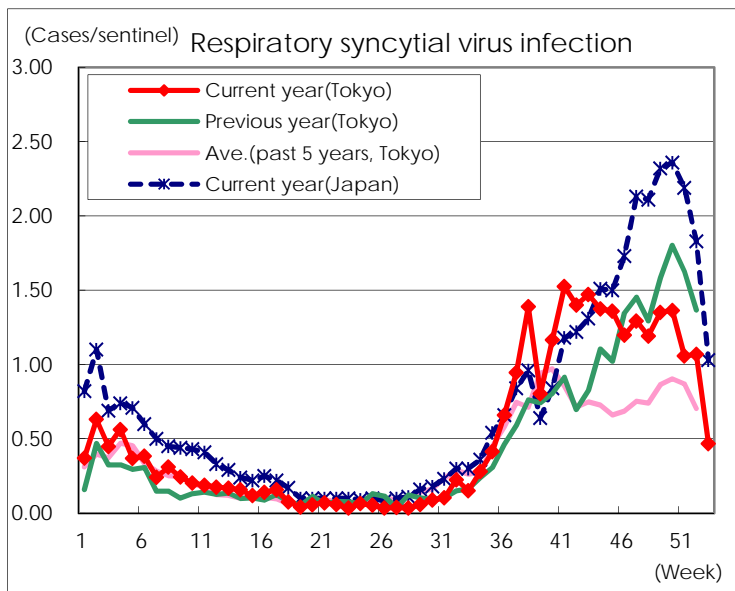
Category	Diseases	Tokyo					Japan	
		50th	51st	52nd	53rd	Cum 2015	53rd	Cum 2015
V	Amebiasis	6	4	6	3	205	8	1,095
	Viral hepatitis(excluding hepatitis A and E)	2	1	1	1	53		251
	CRE infection	4	5	6	1	235	9	1,654
	Acute encephalitis(excluding JE and WNE)			2	1	47	6	497
	Cryptosporidiosis					3		15
	Creutzfeldt-Jakob disease					24		185
	Severe invasive streptococcal infections(TSLS)	1	1			62	5	431
	Acquired immunodeficiency syndrome (AIDS)	16	8	9	5	435	3	1,413
	Giardiasis		1			19		80
	Invasive <i>Haemophilus influenzae</i> disease		1	1		29		247
	Invasive meningococcal disease					8	1	33
	Invasive pneumococcal disease	9	11	6	5	323	23	2,355
	Varicella (limited to hospitalized case)	3	1	1	1	55	2	307
	Congenital rubella syndrome							
	Syphilis	35	20	24	12	1,044	19	2,660
	Disseminated cryptococcosis					11	1	117
	Tetanus					2	3	120
	Vancomycin-resistant <i>S. aureus</i> infection							
	Vancomycin-resistant Enterococcus infection					2		64
	Rubella					33		162
Measles					10		35	
MDRA infection		2	1		13		37	

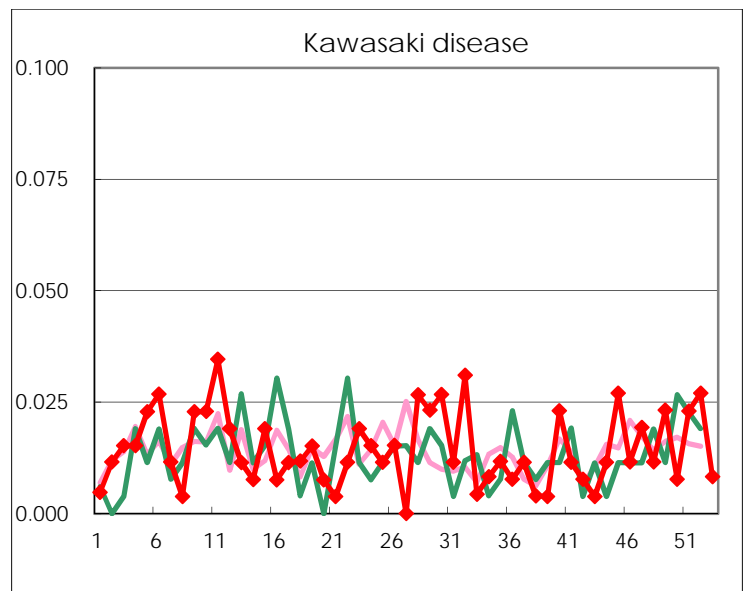
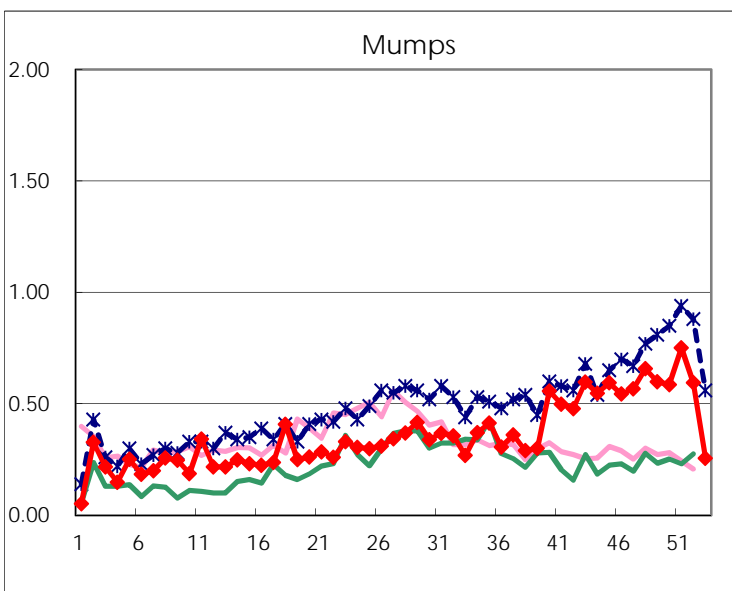
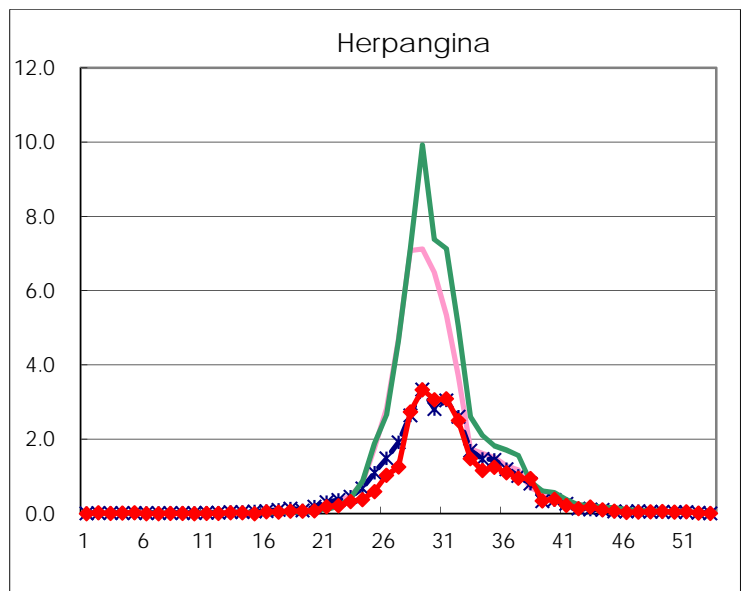
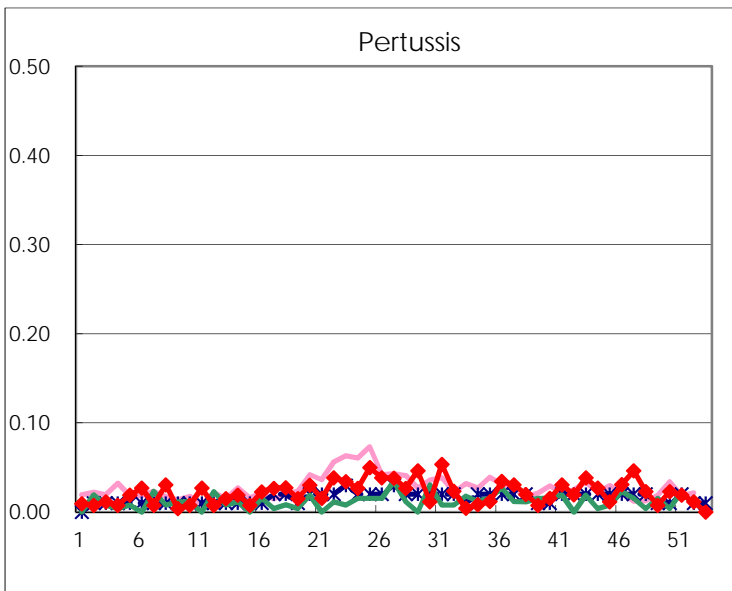
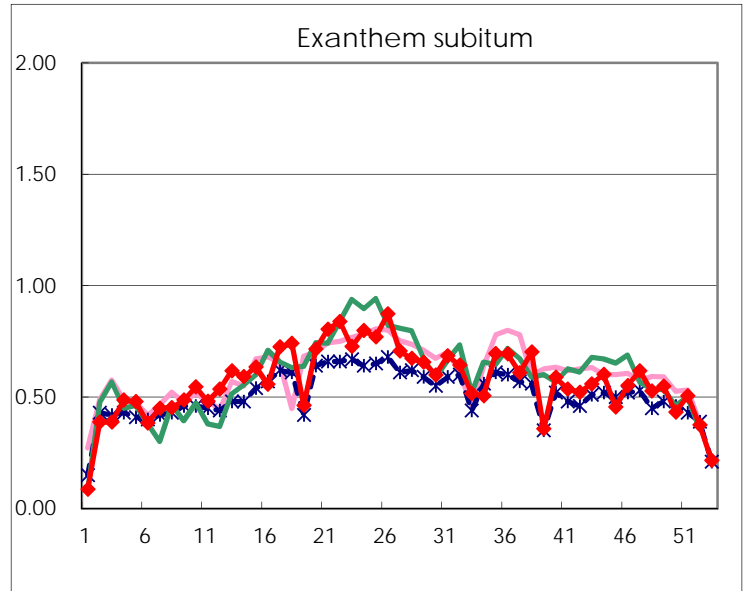
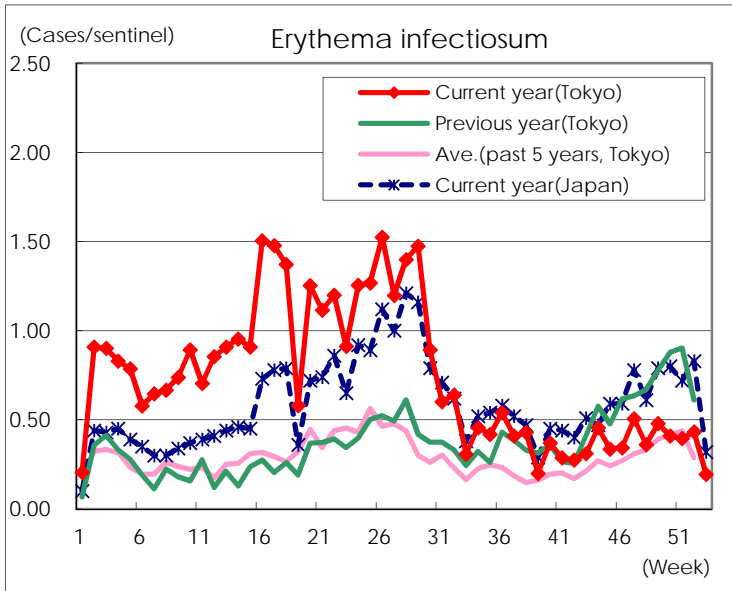
Number of patients with the diseases to be reported  
by the designated clinics and hospitals

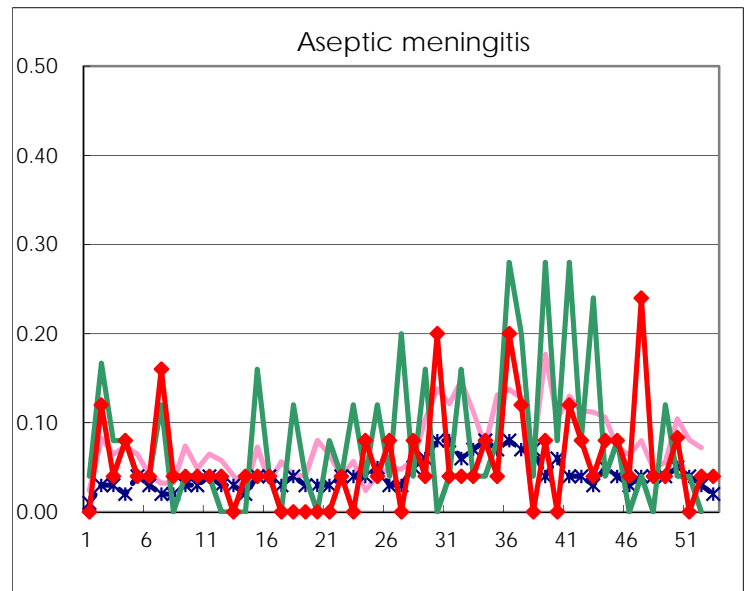
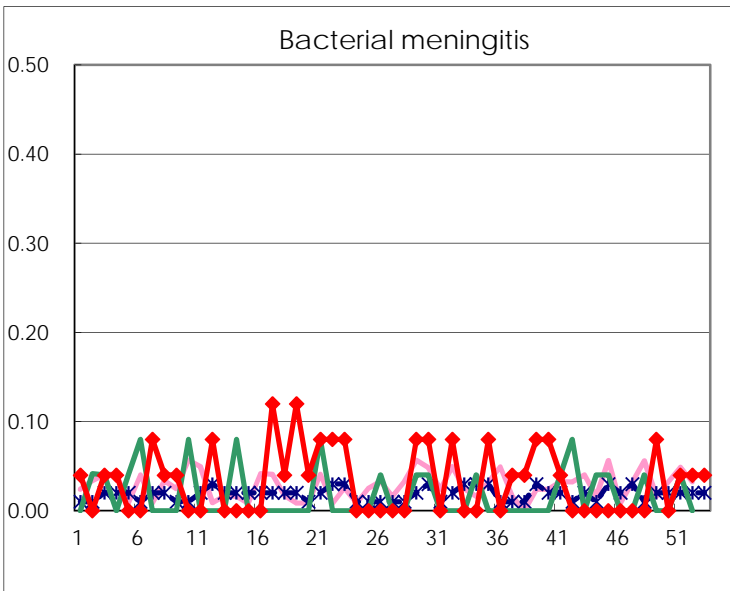
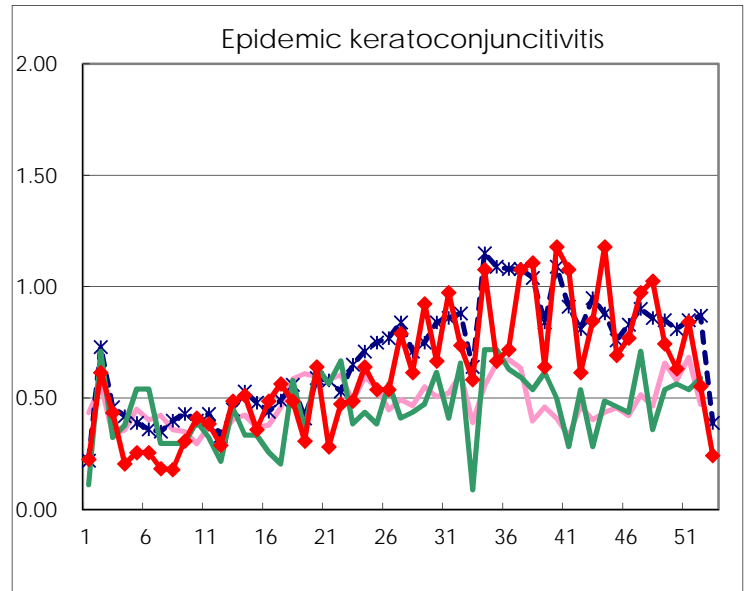
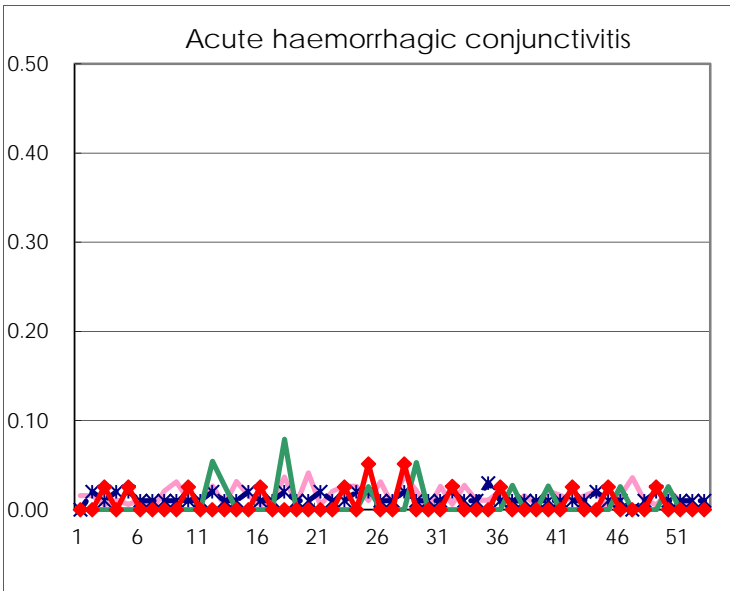
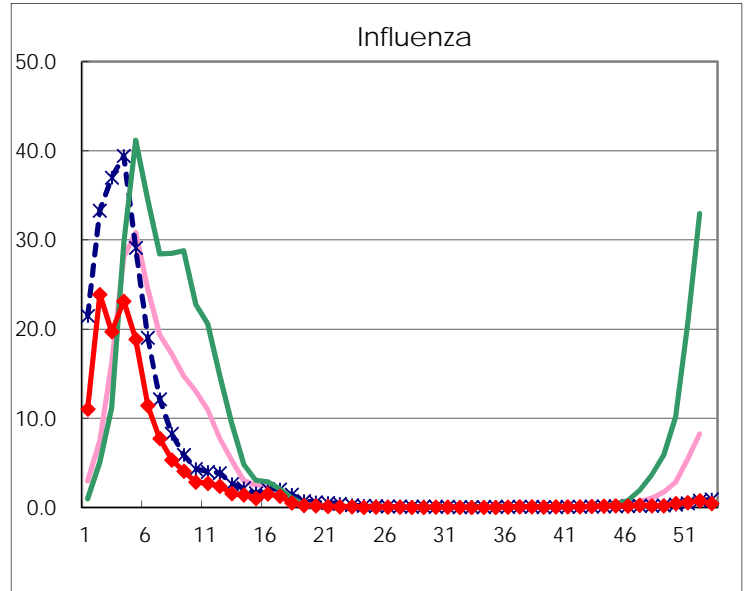
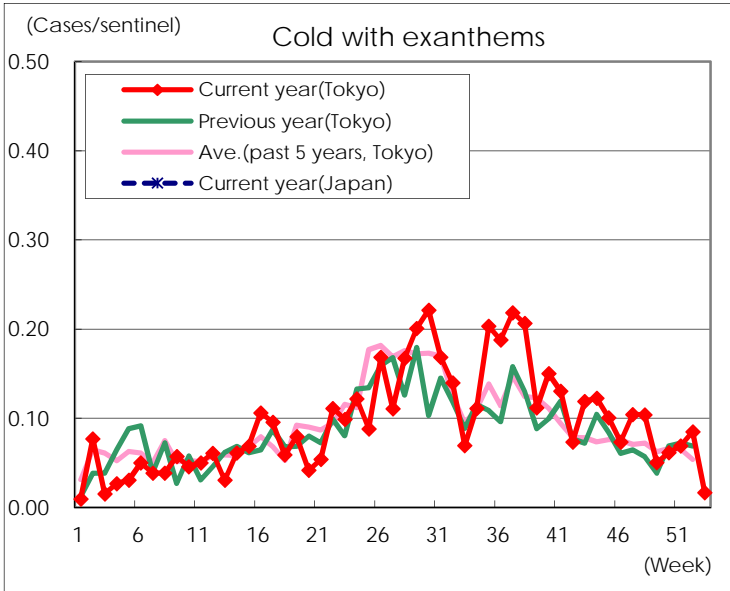
Diseases	Tokyo				
	50th	51st	52nd	53rd	/sentinel
Respiratory syncytial virus infection	356	276	277	113	0.47
Pharyngoconjunctival fever	137	147	133	56	0.23
Group A streptococcal pharyngitis	859	1,048	835	271	1.12
Infectious gastroenteritis	3,734	3,957	3,375	1,171	4.84
Chickenpox	201	267	234	96	0.40
Hand, foot, and mouth disease	30	27	13	3	0.01
Erythema infectiosum	107	103	112	47	0.19
Exanthem subitum	113	132	97	52	0.21
Pertussis	6	5	3		
Herpangina	11	13	5	2	0.01
Mumps	153	196	154	62	0.26
Kawasaki disease	2	6	7	2	0.01
Cold with exanthems	16	18	22	4	0.02
Influenza	181	231	304	167	0.43
Acute hemorrhagic conjunctivitis					
Epidemic keratoconjunctivitis	24	32	21	9	0.24
Bacterial meningitis		1	1	1	0.04
Aseptic meningitis	2		1	1	0.04
Mycoplasma pneumonia	30	32	29	20	0.80
Chlamydial pneumonia (excluding psittacosis)	2	1	2		
Infectious gastroenteritis (only by Rotavirus)	1	1	2	1	0.04
Influenza-Associated Hospitalizations		2	7	3	0.12

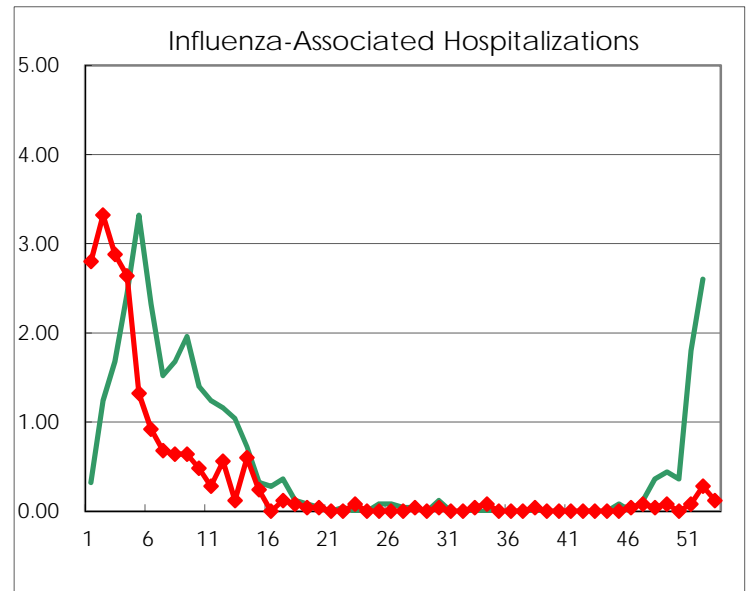
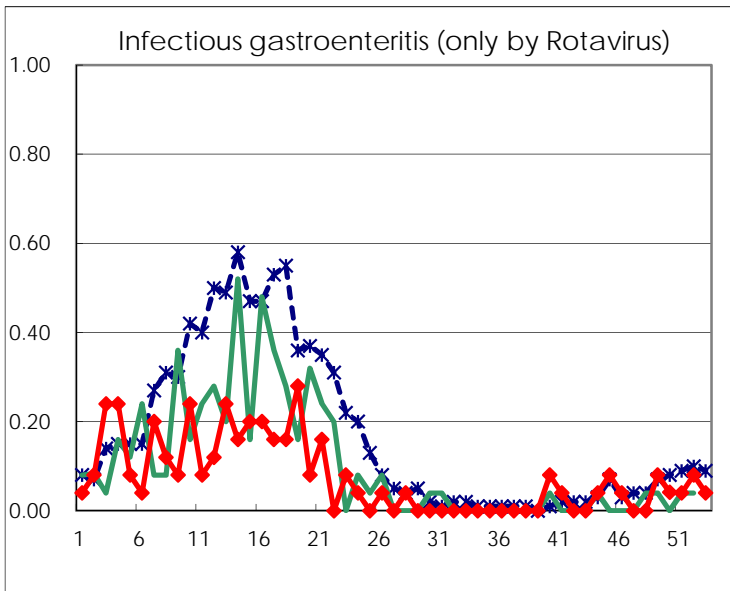
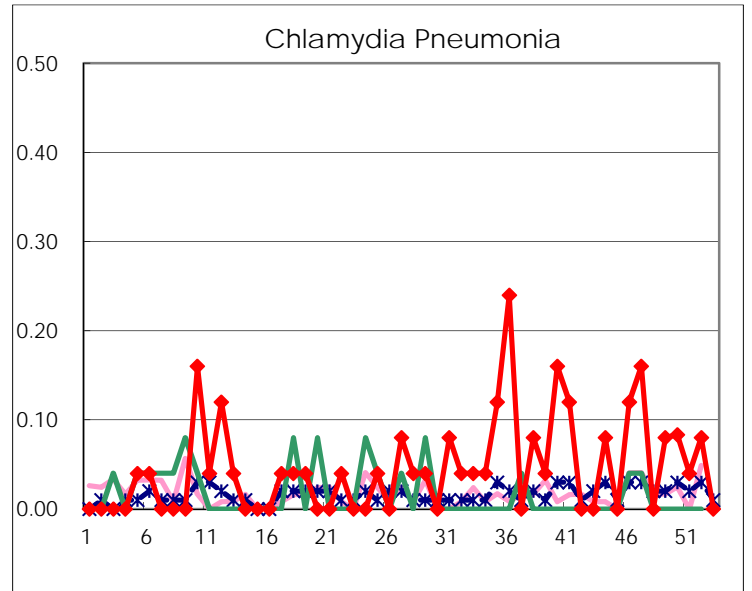
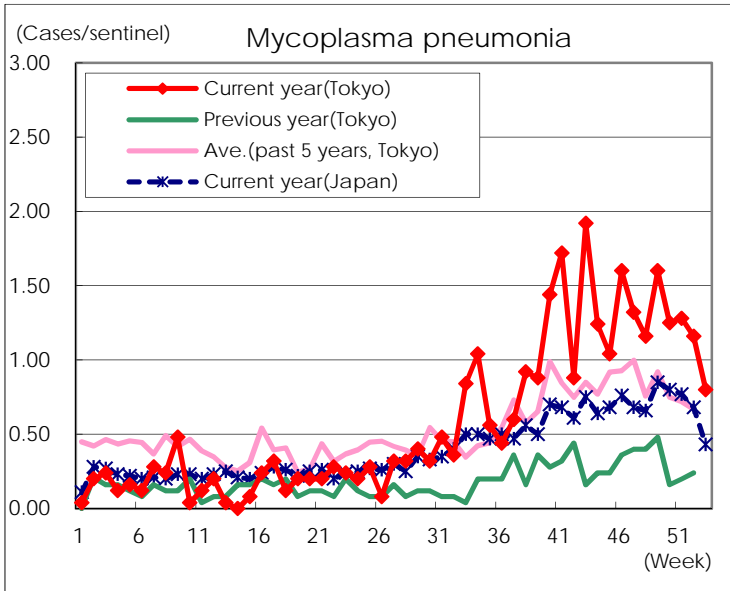
( Blank means 0. )

# Disease Trend Graph (weekly reported cases per sentinel in comparison)









Number of sentinel facilities for weekly reporting		
Types of sentinels	Number of sentinels	Sentinels having reported
Pediatric	264	242
Influenza	419	389
Ophthalmic	39	37
Specially-designated	25	25