

25 February 2016 / Number 7

Surveillance System in Tokyo, Japan

The infectious diseases which all physicians must report

All physicians must report to health centers the incidence of the diseases which are shown at page one. Health centers electronically report the individual cases to Tokyo Metropolitan Infectious Disease Surveillance Center.

The infectious diseases required to be reported by the sentinels

The numbers of patients who visit the sentinel clinics or hospitals during a week are reported to health centers in Tokyo. And they electronically report the numbers to Tokyo Metropolitan Infectious Disease Surveillance Center. We have about 500 sentinel clinics and hospitals in Tokyo.

Tokyo Metropolitan Institute of Public Health

TEL:81-3-3363-3213 FAX:81-3-5332-7365

e-mail:www@tokyo-eiken.go.jp

URL:idsc.tokyo-eiken.go.jp/

Number of patients with the diseases which all physicians must report

Category	Diseases	Tokyo					Japan	
		4th	5th	6th	7th	Cum 2016	7th	Cum 2016
I	Ebola hemorrhagic fever							
	Crimean-Congo hemorrhagic fever							
	Smallpox							
	South American hemorrhagic fever							
	Plague							
	Marburg disease							
	Lassa fever							
II	Acute poliomyelitis							
	Tuberculosis	59	65	52	67	441	317	2,708
	Diphtheria							
	Severe Acute Respiratory Syndrome(SARS)							
	Middle East Respiratory Syndrome (MERS)							
	Avian influenza H5N1							
	Avian influenza H7N9							
III	Cholera							
	Shigellosis			2		4	2	20
	Enterohemorrhagic Escherichia coli infection	2	2		2	10	9	90
	Typhoid fever		1		1	5	1	8
	Paratyphoid fever					2		2
IV	Hepatitis E	1	2	3		9	9	54
	West Nile fever							
	Hepatitis A		1		2	5	9	41
	Echinococcosis							1
	Yellow fever							
	Psittacosis							
	Omsk hemorrhagic fever							
	Relapsing fever							1
	Kyasanur forest disease							
	Q fever							
	Rabies							
	Coccidioidomycosis							
	Monkeypox							
	Zika virus infection							
	Severe Fever with Thrombocytopenia Syndrome							1
	Hemorrhagic fever with renal syndrome							
	Western equine encephalitis							
	Tick-borne encephalitis							
	Anthrax							
	Chikungunya fever							
	Scrub typhus(Tsutsugamushi disease)							30
	Dengue fever	2	2	1		11	3	37
	Eastern equine encephalitis							
	Avian influenza (excluding H5N1 and H7N9)							
	Nipah virus infection							
	Japanese spotted fever						1	2
	Japanese encephalitis							
	Hantavirus pulmonary syndrome							
	Herpes B virus infection							
	Glanders							
	Brucellosis							
	Venezuelan equine encephalitis							
	Hendra virus infection							
Epidemic typhus								
Botulism								
Malaria						1	3	
Tularemia								
Lyme disease								
Lyssavirus infection(excluding rabies)								
Rift valley fever								
Melioidosis								
Legionellosis	1	2	3	3	15	13	148	
Leptospirosis						1	2	
Rocky mountain spotted fever								

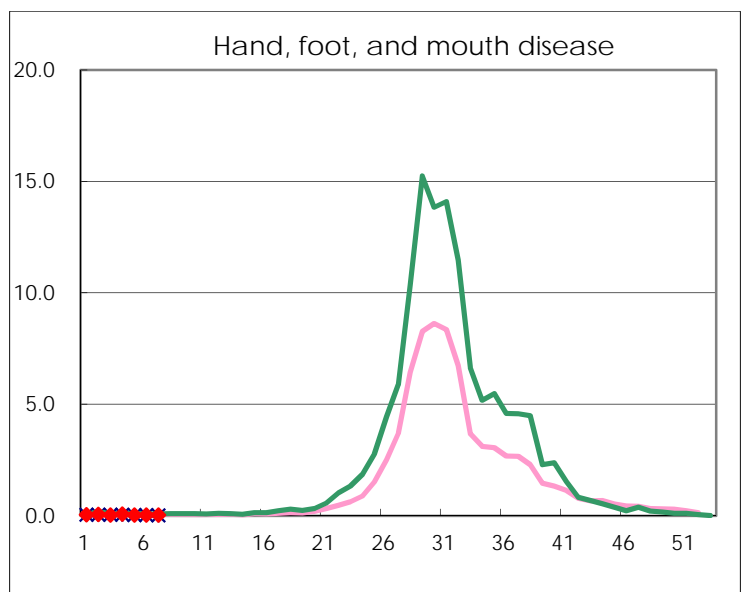
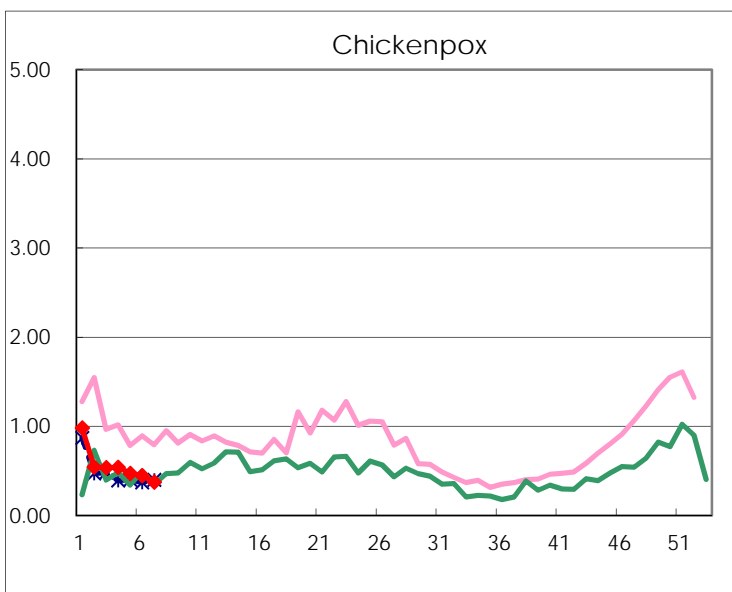
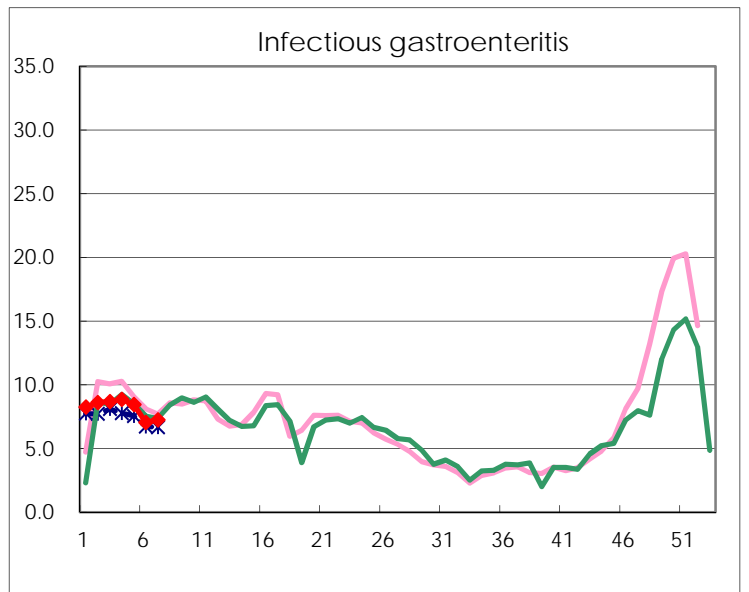
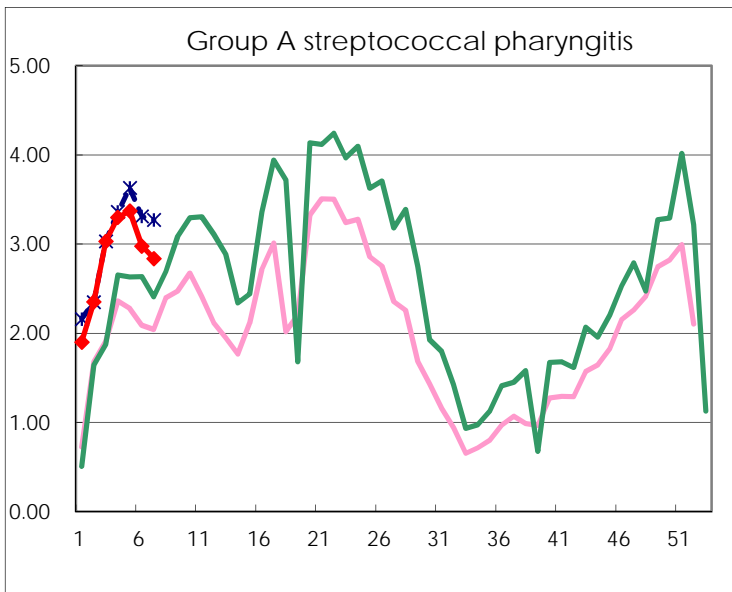
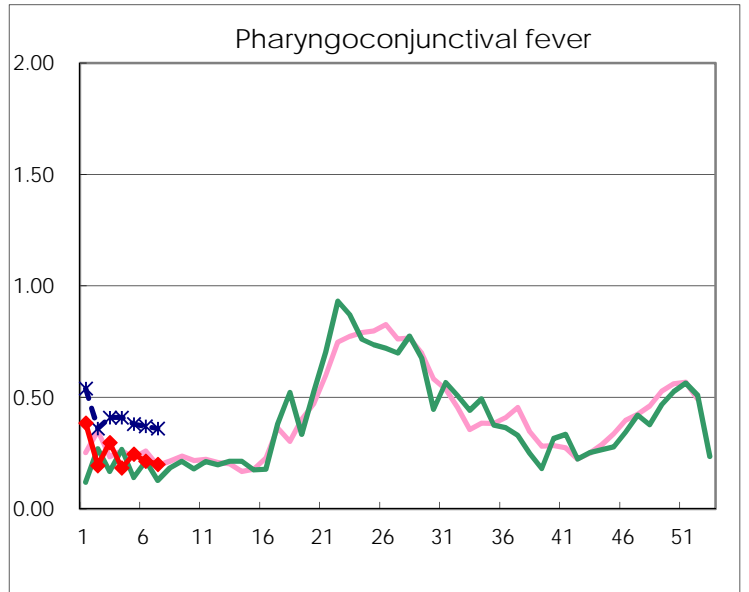
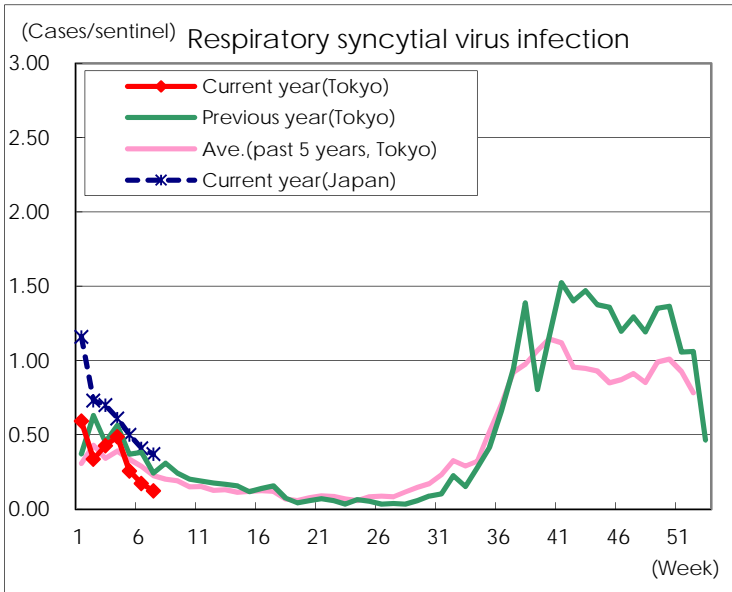
Category	Diseases	Tokyo					Japan	
		4th	5th	6th	7th	Cum 2016	7th	Cum 2016
V	Amebiasis	10	4	1	2	28	10	165
	Viral hepatitis(excluding hepatitis A and E)	3		1	2	8	3	28
	CRE infection	10	6	4	1	31	11	182
	Acute encephalitis(excluding JE and WNE)	5	7	4	1	26	15	147
	Cryptosporidiosis							
	Creutzfeldt-Jakob disease		2			4	2	30
	Severe invasive streptococcal infections(TSLS)	1	4	1	2	17	5	79
	Acquired immunodeficiency syndrome (AIDS)	9	4	10	11	62	11	170
	Giardiasis	1				2	1	9
	Invasive <i>Haemophilus influenzae</i> disease	2		1	1	6	5	42
	Invasive meningococcal disease						1	6
	Invasive pneumococcal disease	7	8	3	10	57	49	408
	Varicella (limited to hospitalized case)	1	2			8	1	34
	Congenital rubella syndrome							
	Syphilis	38	31	26	31	218	42	435
	Disseminated cryptococcosis					1	2	16
	Tetanus							6
	Vancomycin-resistant <i>S. aureus</i> infection							
	Vancomycin-resistant <i>Enterococcus</i> infection							4
	Rubella						1	6
Measles							1	
MDRA infection							6	

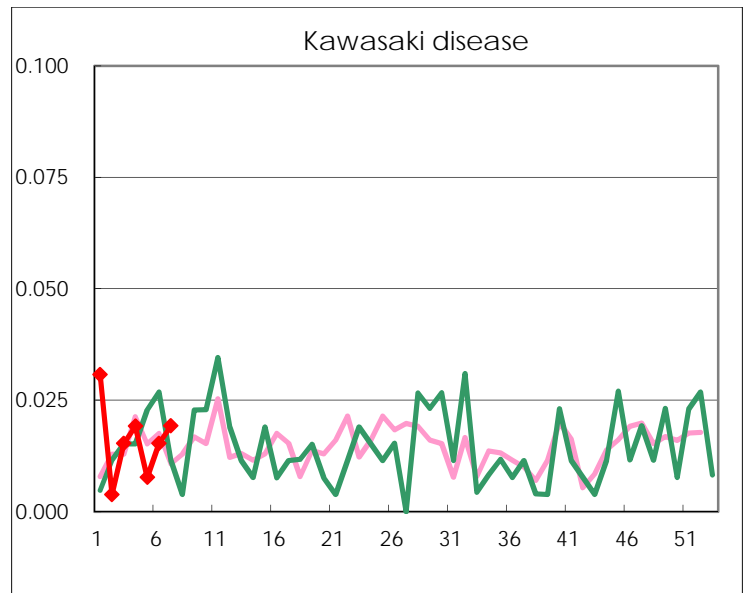
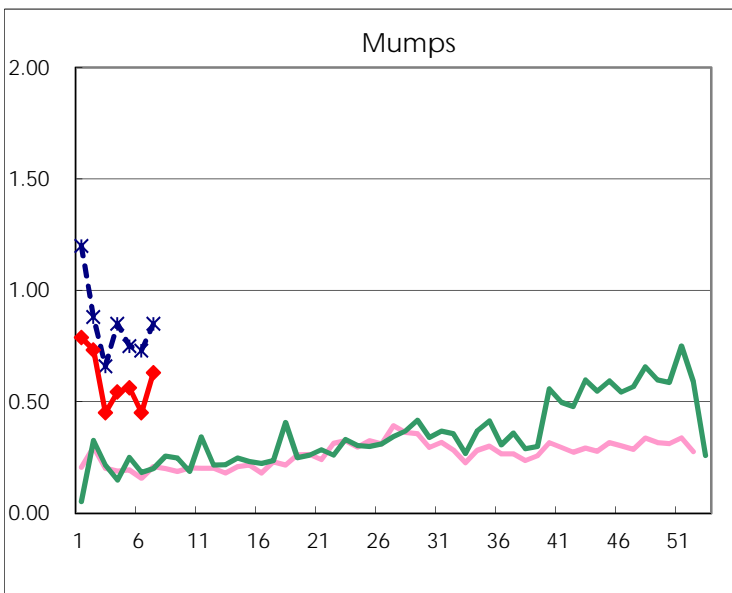
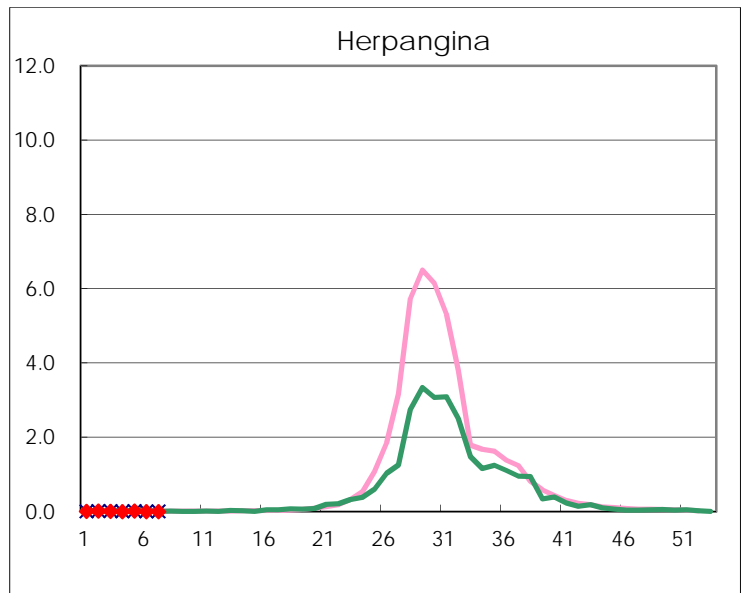
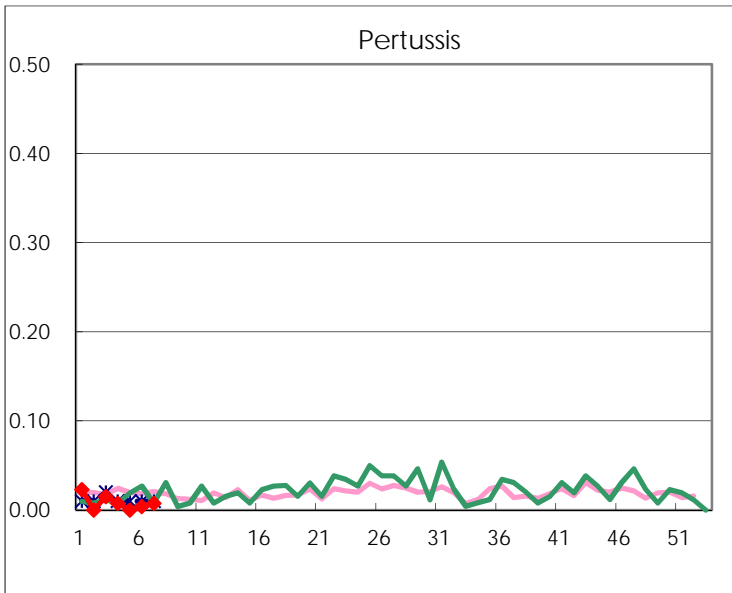
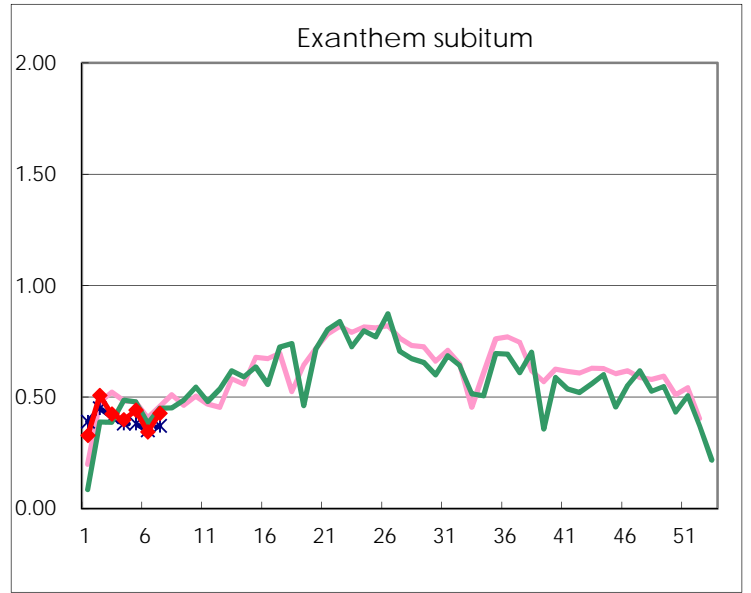
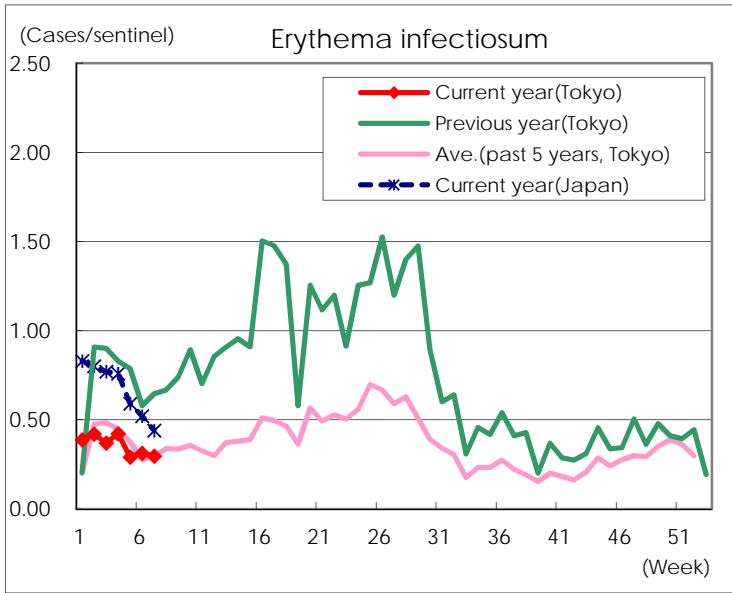
Number of patients with the diseases to be reported
by the designated clinics and hospitals

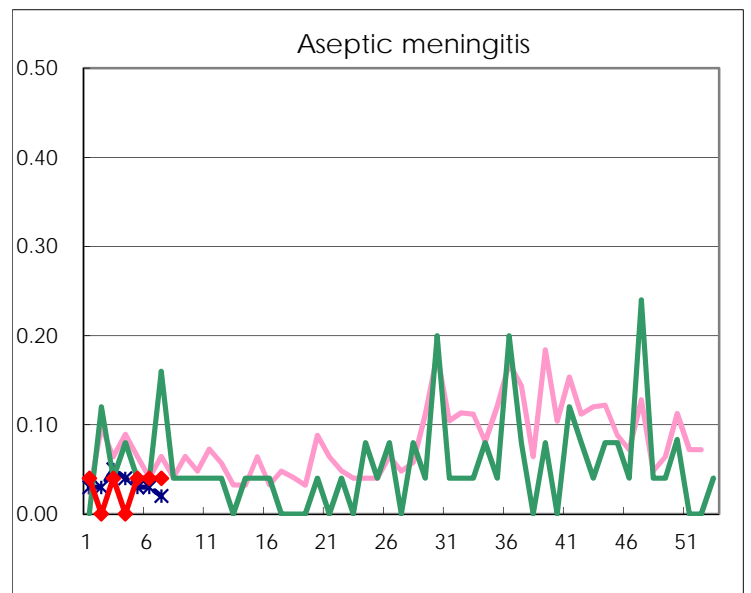
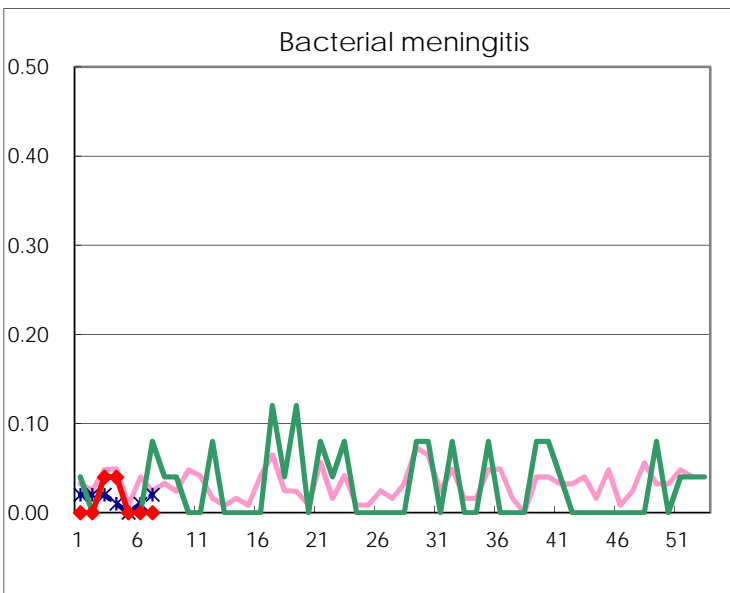
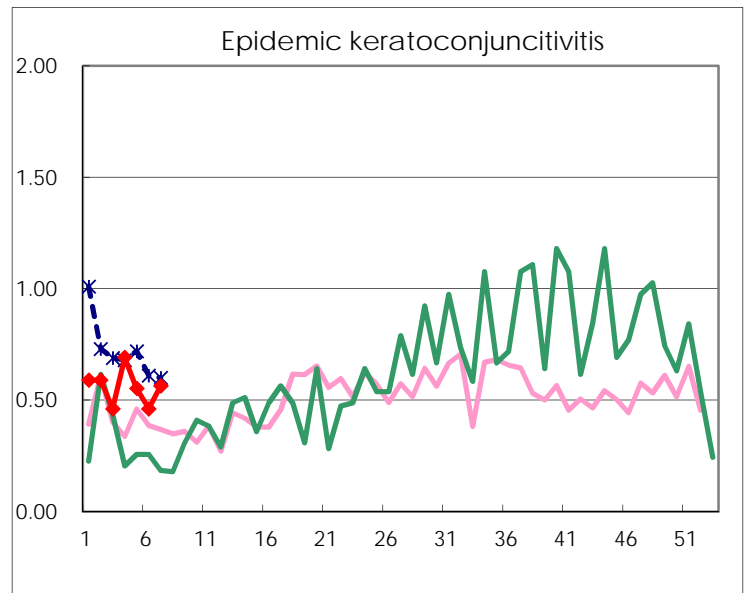
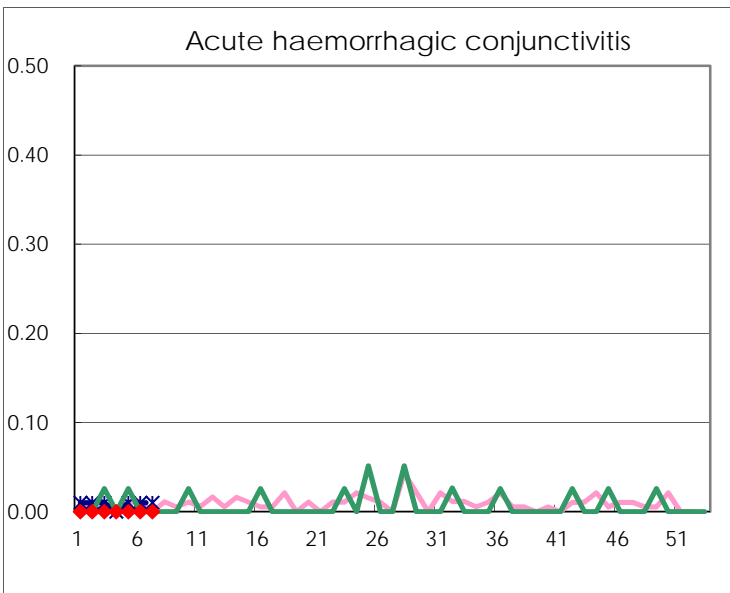
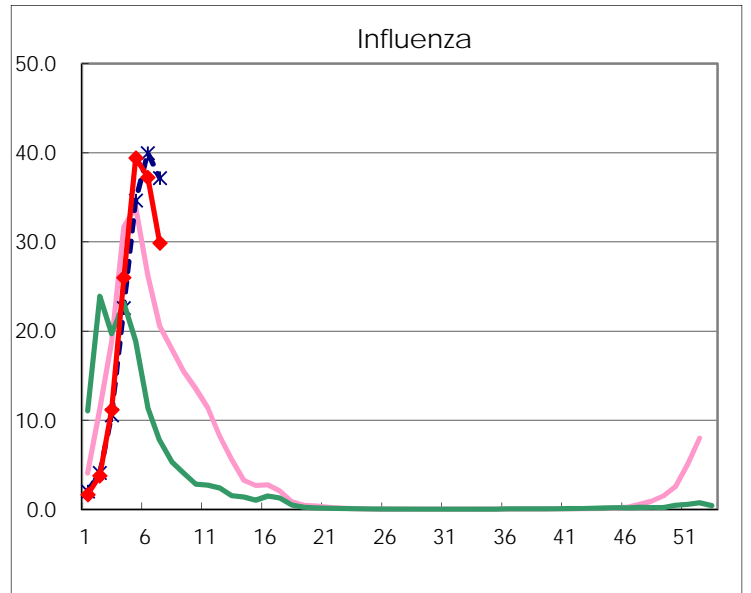
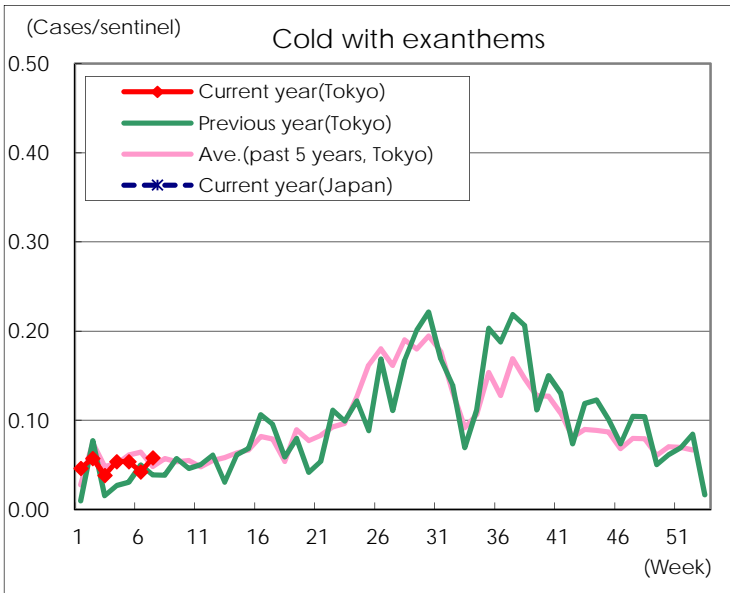
Diseases	Tokyo				
	4th	5th	6th	7th	/sentinel
Respiratory syncytial virus infection	127	67	45	32	0.12
Pharyngoconjunctival fever	48	64	56	52	0.20
Group A streptococcal pharyngitis	861	880	780	738	2.84
Infectious gastroenteritis	2,307	2,203	1,843	1,885	7.25
Chickenpox	141	123	117	97	0.37
Hand, foot, and mouth disease	19	7	8	8	0.03
Erythema infectiosum	110	76	82	77	0.30
Exanthem subitum	104	115	90	111	0.43
Pertussis	2		1	2	0.01
Herpangina		4	1	1	
Mumps	142	147	118	164	0.63
Kawasaki disease	5	2	4	5	0.02
Cold with exanthems	14	14	11	15	0.06
Influenza	10,782	16,365	15,494	12,374	29.89
Acute hemorrhagic conjunctivitis					
Epidemic keratoconjunctivitis	27	21	18	22	0.56
Bacterial meningitis	1				
Aseptic meningitis		1	1	1	0.04
<i>Mycoplasma pneumoniae</i>	13	14	14	11	0.44
<i>Chlamydial pneumoniae</i> (excluding psittacosis)	1	1	2		
Infectious gastroenteritis (only by Rotavirus)		3	3	13	0.52
Influenza-Associated Hospitalizations	45	64	82	71	2.84

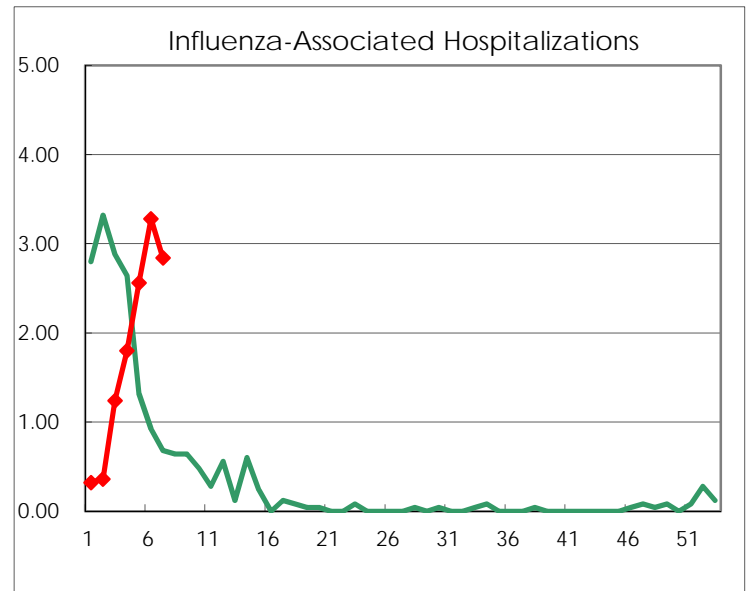
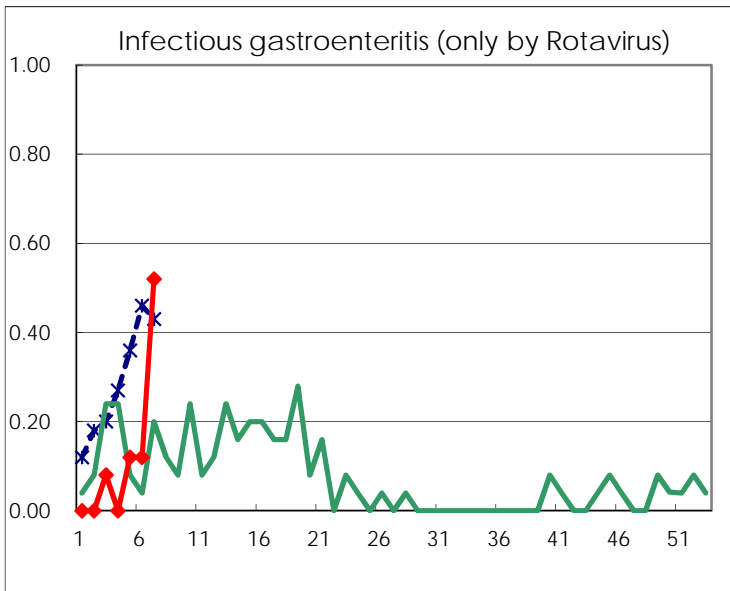
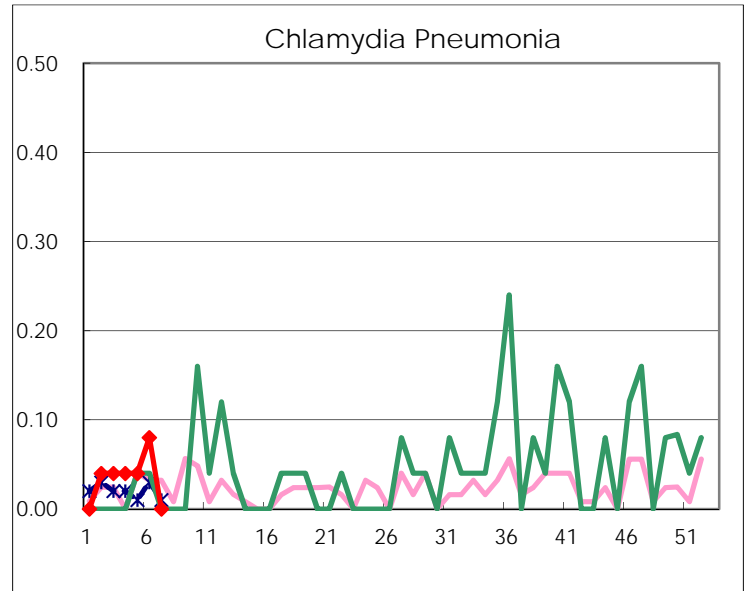
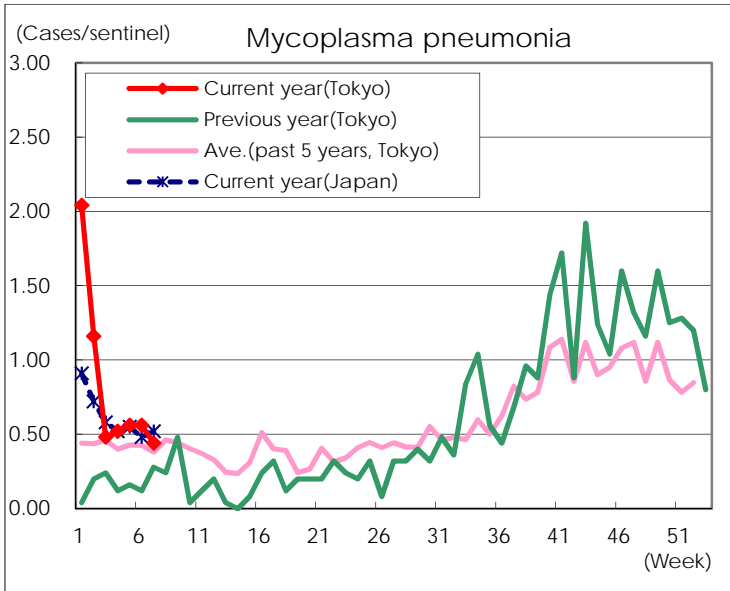
(Blank means 0.)

Disease Trend Graph (weekly reported cases per sentinel in comparison)









Number of sentinel facilities for weekly reporting		
Types of sentinels	Number of sentinels	Sentinels having reported
Pediatric	264	260
Influenza	419	414
Ophthalmic	39	39
Specially-designated	25	25