

24 March 2016 / Number 11

Surveillance System in Tokyo, Japan

The infectious diseases which all physicians must report

All physicians must report to health centers the incidence of the diseases which are shown at page one. Health centers electronically report the individual cases to Tokyo Metropolitan Infectious Disease Surveillance Center.

The infectious diseases required to be reported by the sentinels

The numbers of patients who visit the sentinel clinics or hospitals during a week are reported to health centers in Tokyo. And they electronically report the numbers to Tokyo Metropolitan Infectious Disease Surveillance Center. We have about 500 sentinel clinics and hospitals in Tokyo.

Tokyo Metropolitan Institute of Public Health

TEL:81-3-3363-3213 FAX:81-3-5332-7365

e-mail:www@tokyo-eiken.go.jp

URL:idsc.tokyo-eiken.go.jp/

Number of patients with the diseases which all physicians must report

Category	Diseases	Tokyo					Japan	
		8th	9th	10th	11th	Cum 2016	11th	Cum 2016
I	Ebola hemorrhagic fever							
	Crimean-Congo hemorrhagic fever							
	Smallpox							
	South American hemorrhagic fever							
	Plague							
	Marburg disease							
II	Lassa fever							
	Acute poliomyelitis							
	Tuberculosis	73	65	65	80	733	337	4,482
	Diphtheria							
	Severe Acute Respiratory Syndrome(SARS)							
	Middle East Respiratory Syndrome (MERS)							
III	Avian influenza H5N1							
	Avian influenza H7N9							
	Cholera							
	Shigellosis		3	1		8	1	33
	Enterohemorrhagic Escherichia coli infection	1	2	3		16	7	135
IV	Typhoid fever					5	1	9
	Paratyphoid fever					2		2
	Hepatitis E	1	1	3		14	2	83
	West Nile fever							
	Hepatitis A	2	1	4	4	16	11	77
	Echinococcosis							3
	Yellow fever							
	Psittacosis							
	Omsk hemorrhagic fever							
	Relapsing fever							1
	Kyasanur forest disease							
	Q fever							
	Rabies							
	Coccidioidomycosis							
	Monkeypox							
	Zika virus infection							2
	Severe Fever with Thrombocytopenia Syndrome							2
	Hemorrhagic fever with renal syndrome							
	Western equine encephalitis							
	Tick-borne encephalitis							
	Anthrax							
	Chikungunya fever		1			1		1
	Scrub typhus(Tsutsugamushi disease)							36
	Dengue fever	1	1	1		14	4	57
	Eastern equine encephalitis							
	Avian influenza (excluding H5N1 and H7N9)							
	Nipah virus infection							
	Japanese spotted fever							3
	Japanese encephalitis							
	Hantavirus pulmonary syndrome							
	Herpes B virus infection							
	Glanders							
	Brucellosis							
Venezuelan equine encephalitis								
Hendra virus infection								
Epidemic typhus								
Botulism								
Malaria	1			1	2	1	4	
Tularemia								
Lyme disease								
Lyssavirus infection(excluding rabies)								
Rift valley fever								
Melioidosis								
Legionellosis	1	1	1	4	22	17	230	
Leptospirosis							3	
Rocky mountain spotted fever								

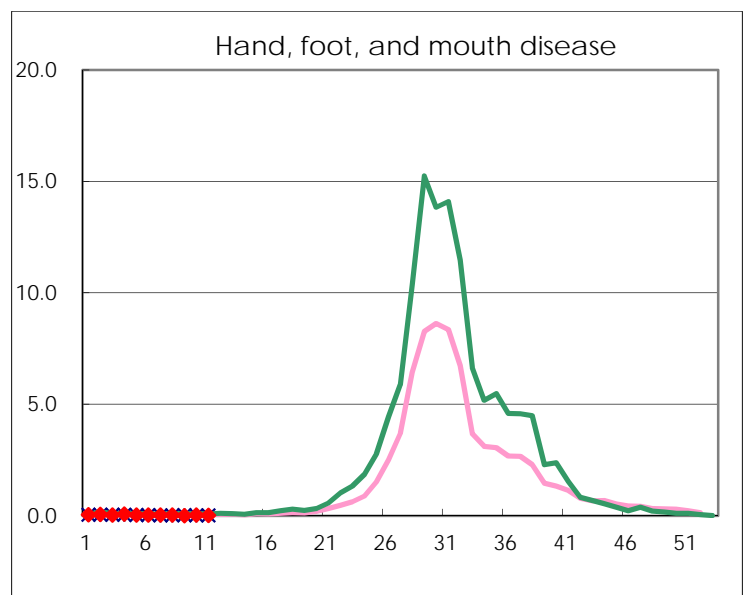
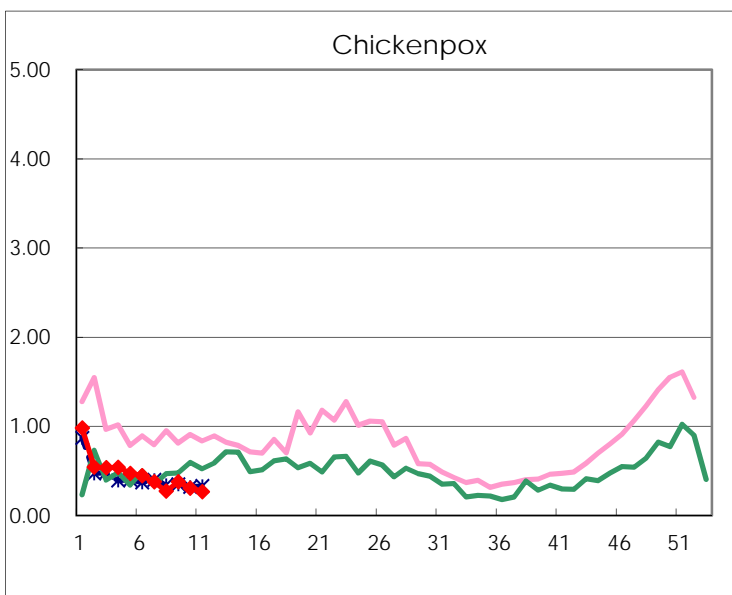
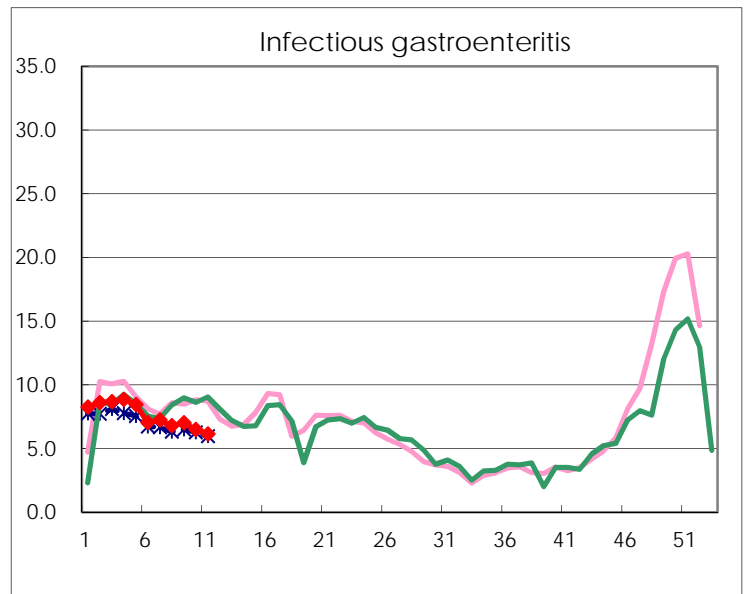
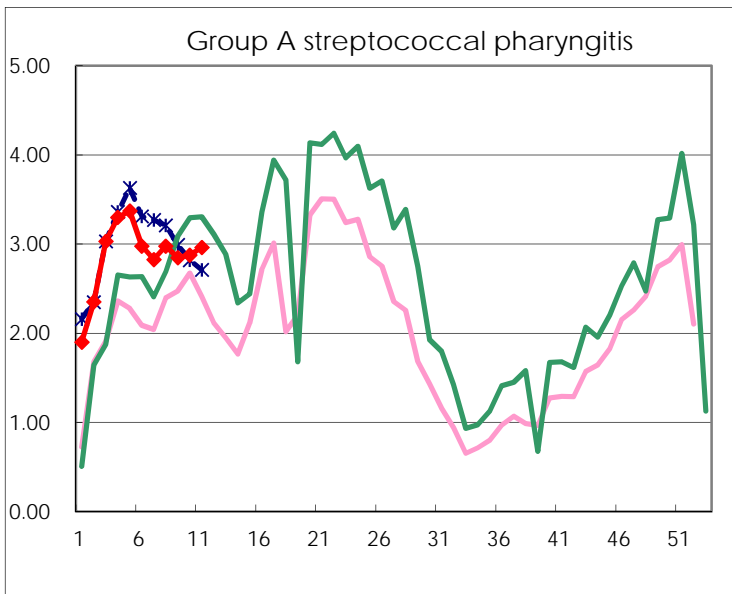
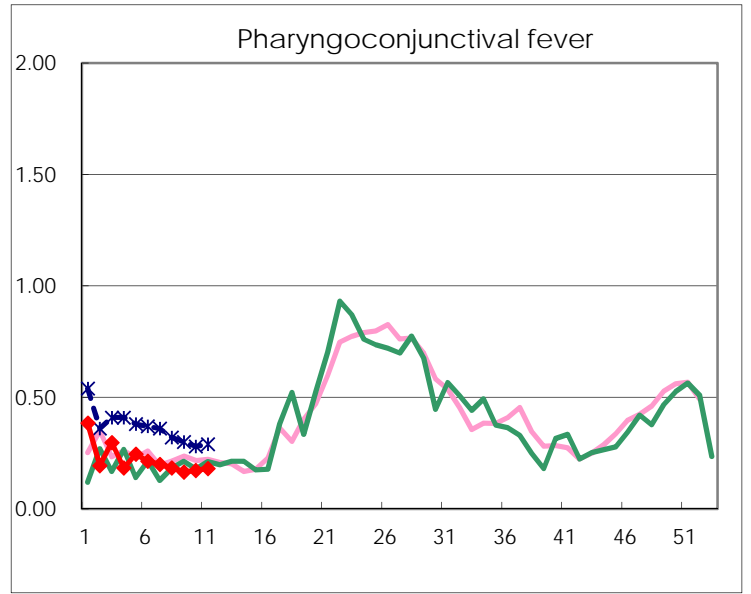
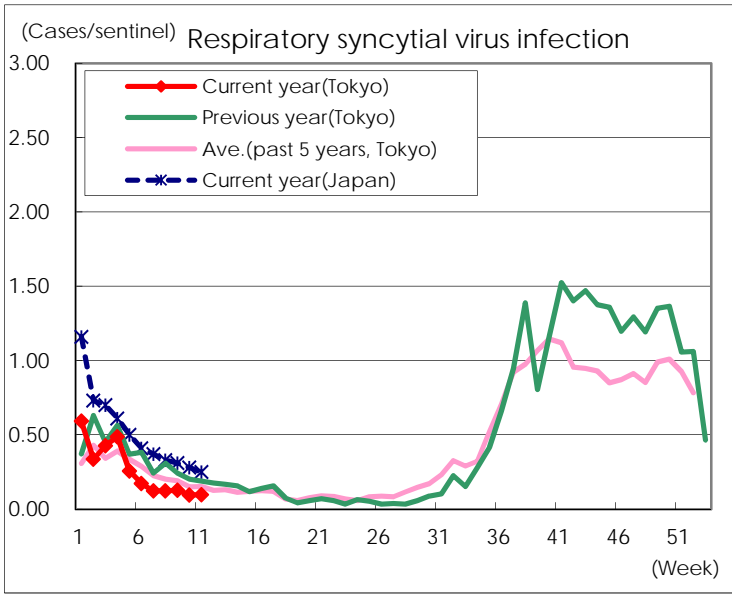
Category	Diseases	Tokyo					Japan	
		8th	9th	10th	11th	Cum 2016	11th	Cum 2016
V	Amebiasis	5	2	5	5	45	5	240
	Viral hepatitis(excluding hepatitis A and E)	3		1		12	2	48
	CRE infection	5	5	3	2	46	10	287
	Acute encephalitis(excluding JE and WNE)	7	6	2	1	42	4	253
	Cryptosporidiosis							2
	Creutzfeldt-Jakob disease		1		1	6	3	45
	Severe invasive streptococcal infections(TSLS)		1			18	6	119
	Acquired immunodeficiency syndrome (AIDS)	8	6	14	9	101	22	303
	Giardiasis			1	1	4	1	11
	Invasive <i>Haemophilus influenzae</i> disease			1	2	9	7	73
	Invasive meningococcal disease						1	13
	Invasive pneumococcal disease	8	7	10	9	92	31	675
	Varicella (limited to hospitalized case)					8	1	46
	Congenital rubella syndrome							
	Syphilis	27	28	47	21	341	28	710
	Disseminated cryptococcosis		1	2	1	5	2	26
	Tetanus							13
	Vancomycin-resistant <i>S. aureus</i> infection							
	Vancomycin-resistant Enterococcus infection						1	6
	Rubella		3		1	4	1	23
Measles						1	4	
MDRA infection							7	

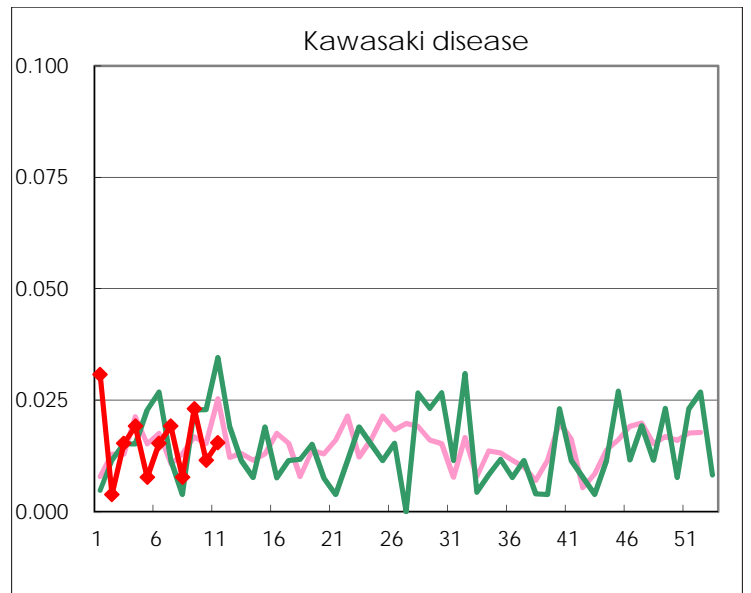
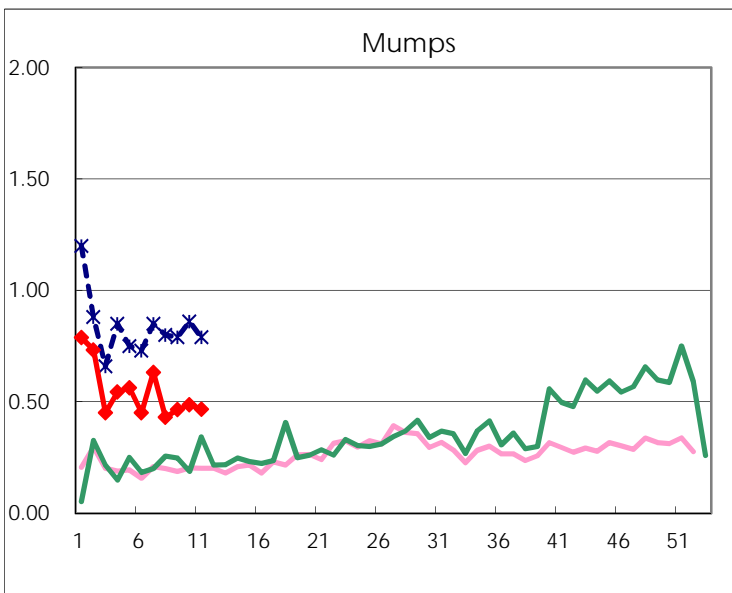
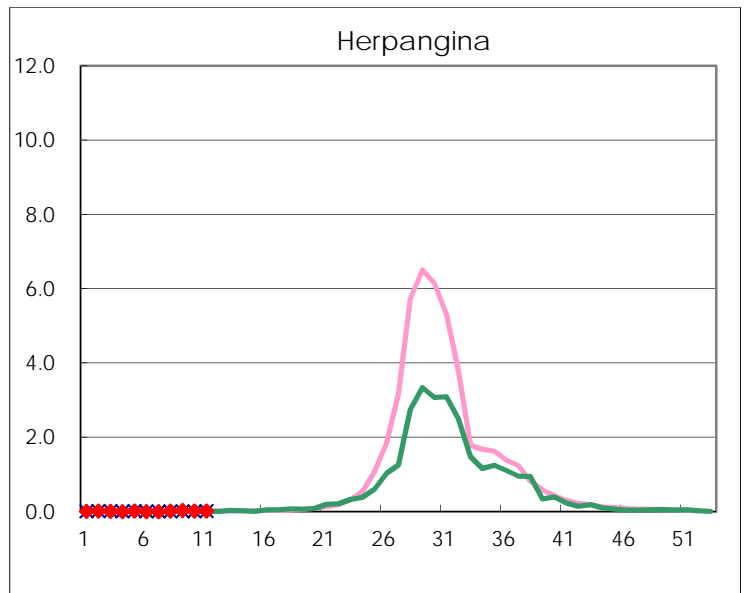
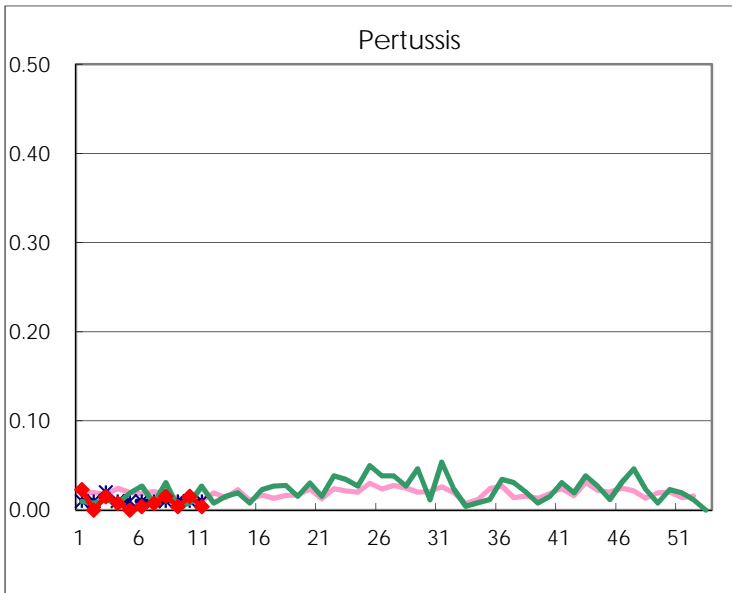
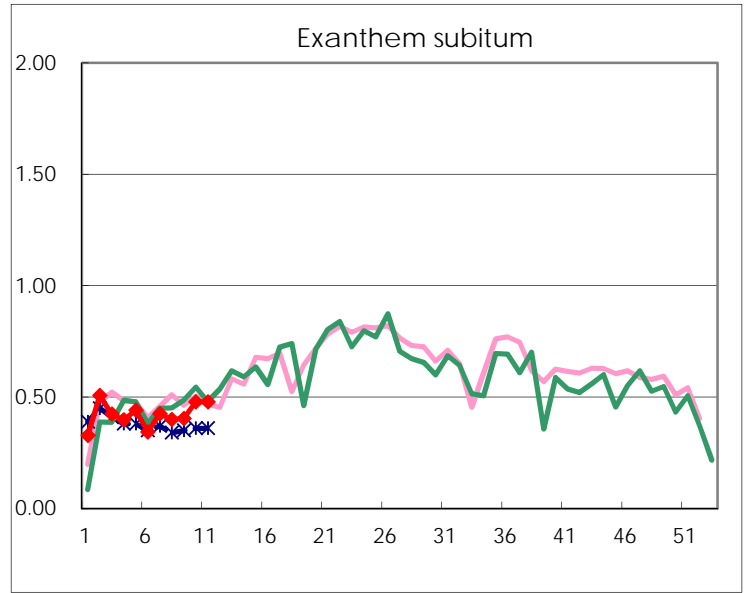
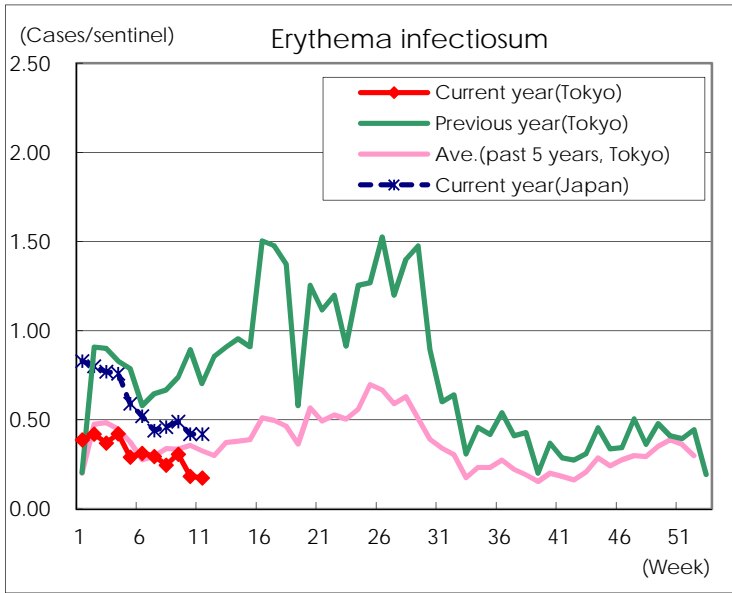
Number of patients with the diseases to be reported
by the designated clinics and hospitals

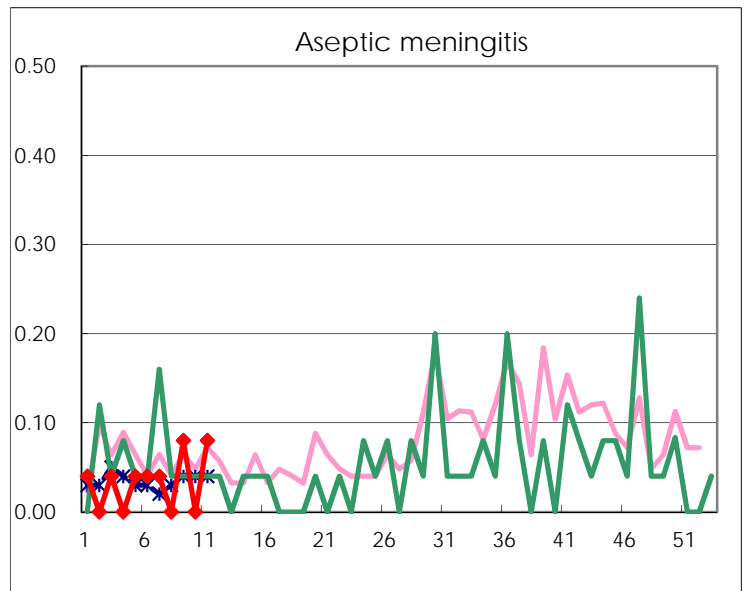
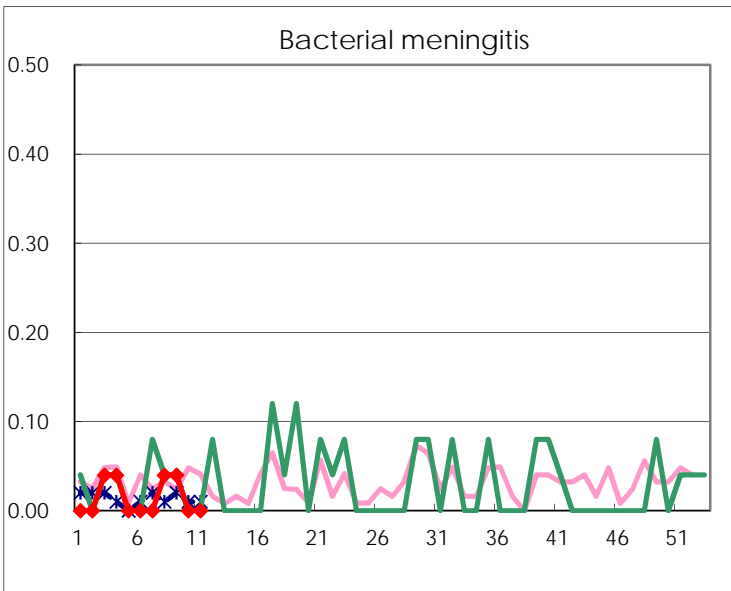
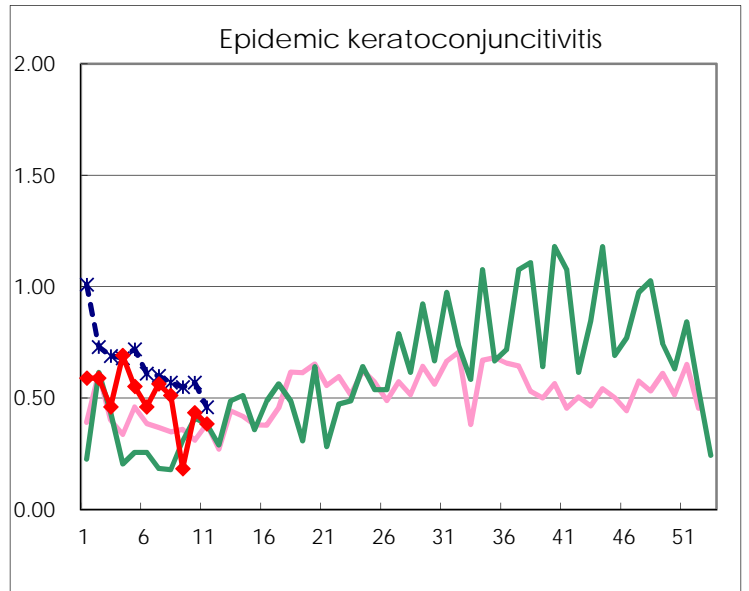
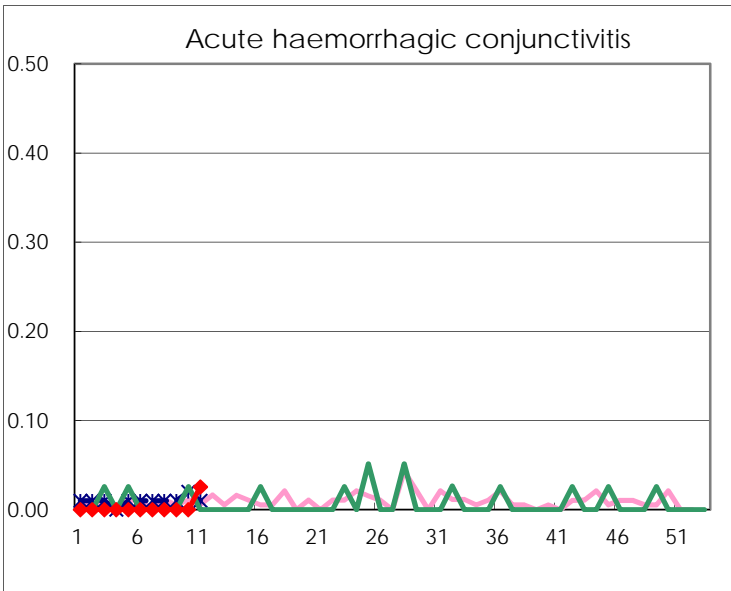
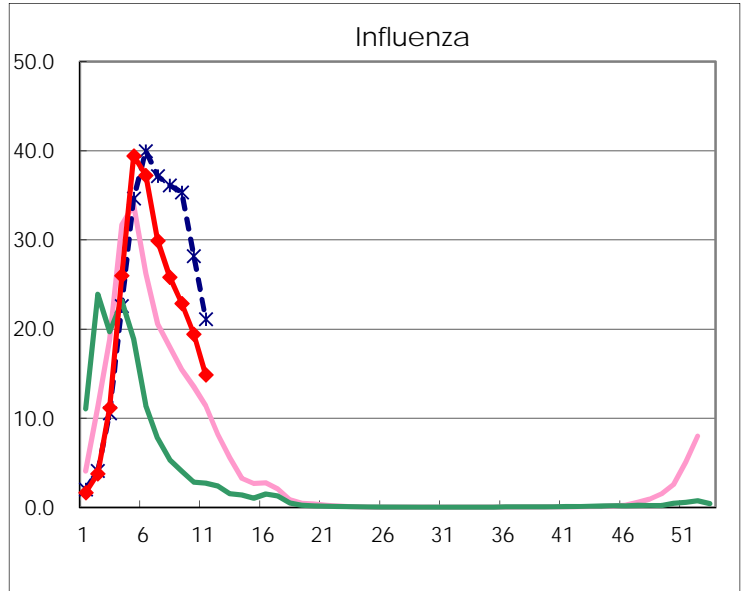
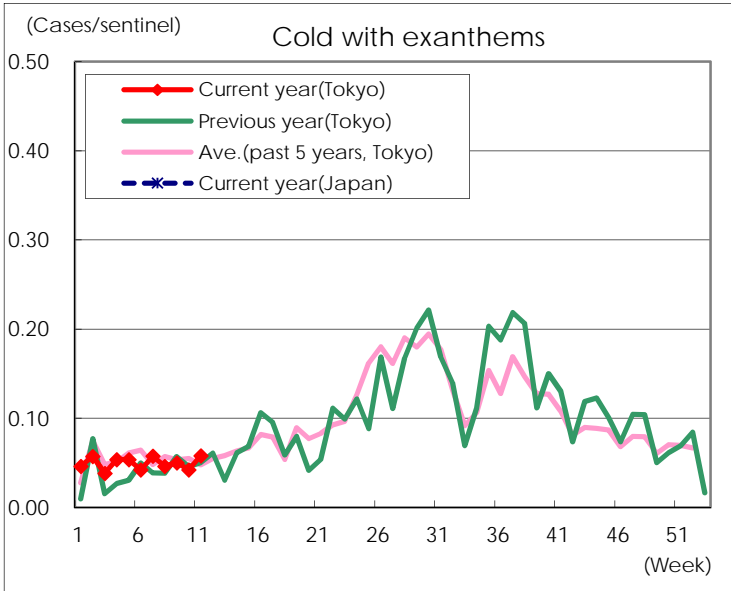
Diseases	Tokyo				
	8th	9th	10th	11th	/sentinel
Respiratory syncytial virus infection	32	33	25	25	0.10
Pharyngoconjunctival fever	48	43	45	47	0.18
Group A streptococcal pharyngitis	774	740	751	767	2.96
Infectious gastroenteritis	1,762	1,821	1,694	1,591	6.14
Chickenpox	71	98	80	69	0.27
Hand, foot, and mouth disease	8	2	6	5	0.02
Erythema infectiosum	64	80	48	45	0.17
Exanthem subitum	104	105	125	124	0.48
Pertussis	4	1	4	1	
Herpangina	4	9	4	5	0.02
Mumps	112	121	127	121	0.47
Kawasaki disease	2	6	3	4	0.02
Cold with exanthems	12	13	11	15	0.06
Influenza	10,688	9,499	8,065	6,138	14.86
Acute hemorrhagic conjunctivitis				1	0.03
Epidemic keratoconjunctivitis	20	7	17	15	0.38
Bacterial meningitis	1	1			
Aseptic meningitis		2		2	0.08
Mycoplasma pneumonia	5	6	10	13	0.52
Chlamydial pneumonia (excluding psittacosis)	1	3	3	1	0.04
Infectious gastroenteritis (only by Rotavirus)	3	2	4	6	0.24
Influenza-Associated Hospitalizations	49	37	31	33	1.32

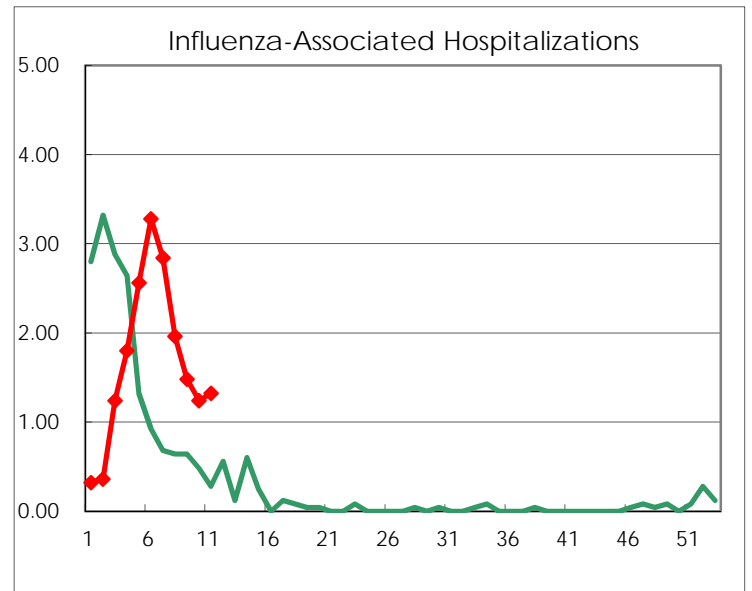
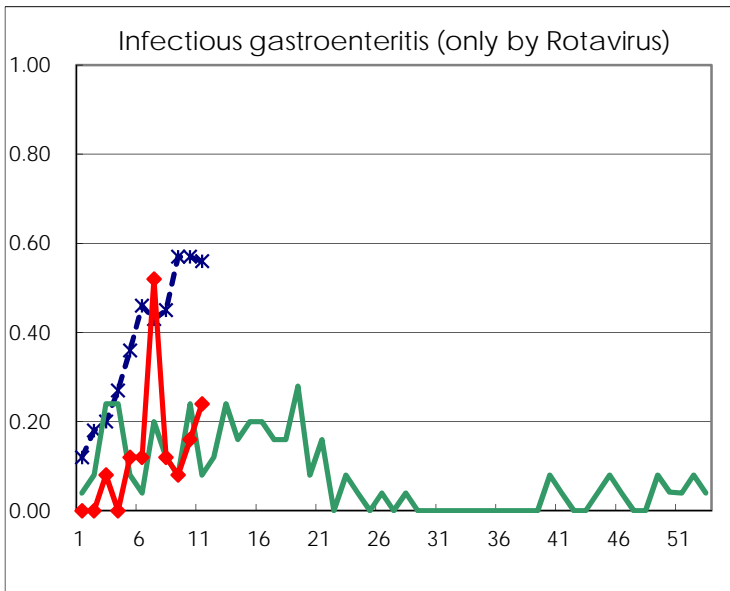
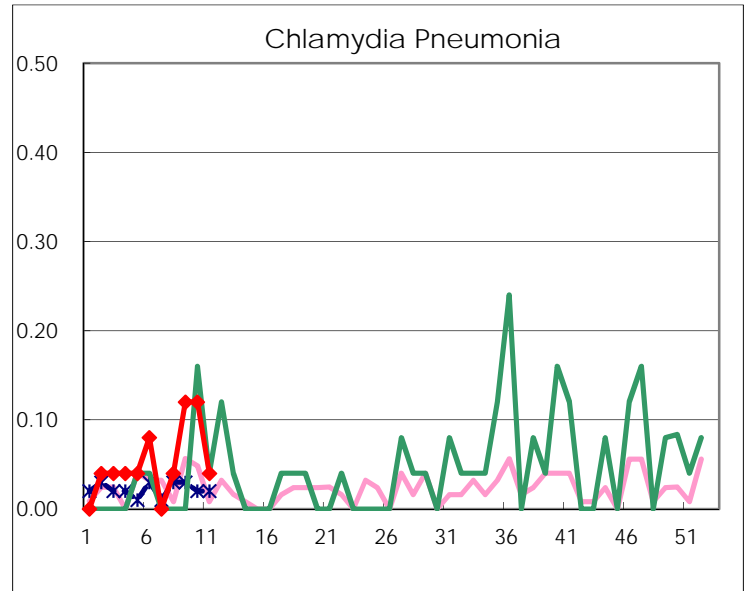
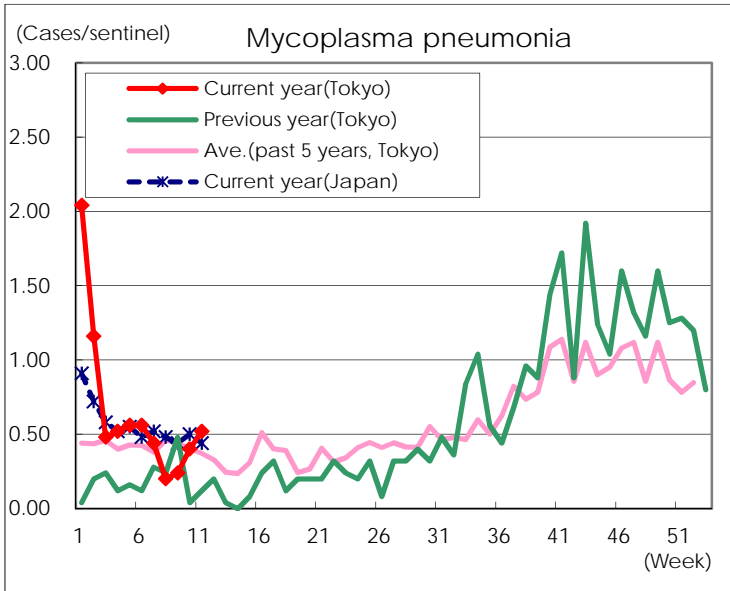
(Blank means 0.)

Disease Trend Graph (weekly reported cases per sentinel in comparison)









Number of sentinel facilities for weekly reporting		
Types of sentinels	Number of sentinels	Sentinels having reported
Pediatric	264	259
Influenza	419	413
Ophthalmic	39	39
Specially-designated	25	25