

14 April 2016 / Number 14

Surveillance System in Tokyo, Japan

The infectious diseases which all physicians must report

All physicians must report to health centers the incidence of the diseases which are shown at page one. Health centers electronically report the individual cases to Tokyo Metropolitan Infectious Disease Surveillance Center.

The infectious diseases required to be reported by the sentinels

The numbers of patients who visit the sentinel clinics or hospitals during a week are reported to health centers in Tokyo. And they electronically report the numbers to Tokyo Metropolitan Infectious Disease Surveillance Center. We have about 500 sentinel clinics and hospitals in Tokyo.

Tokyo Metropolitan Institute of Public Health

TEL:81-3-3363-3213 FAX:81-3-5332-7365

e-mail:www@tokyo-eiken.go.jp

URL:idsc.tokyo-eiken.go.jp/

Number of patients with the diseases which all physicians must report

Category	Diseases	Tokyo					Japan	
		11th	12th	13th	14th	Cum 2016	14th	Cum 2016
I	Ebola hemorrhagic fever							
	Crimean-Congo hemorrhagic fever							
	Smallpox							
	South American hemorrhagic fever							
	Plague							
	Marburg disease							
	Lassa fever							
II	Acute poliomyelitis							
	Tuberculosis	84	55	72	52	918	319	5,831
	Diphtheria							
	Severe Acute Respiratory Syndrome(SARS)							
	Middle East Respiratory Syndrome (MERS)							
	Avian influenza H5N1							
	Avian influenza H7N9							
III	Cholera							
	Shigellosis		2		1	11	1	39
	Enterohemorrhagic Escherichia coli infection			1	3	20	15	169
	Typhoid fever		2			7		11
	Paratyphoid fever				1	3	1	4
IV	Hepatitis E				2	16	8	116
	West Nile fever							
	Hepatitis A	4	2	5	5	28	7	106
	Echinococcosis							3
	Yellow fever							
	Psittacosis							
	Omsk hemorrhagic fever							
	Relapsing fever							1
	Kyasanur forest disease							
	Q fever							
	Rabies							
	Coccidioidomycosis							
	Monkeypox							
	Zika virus infection							4
	Severe Fever with Thrombocytopenia Syndrome							5
	Hemorrhagic fever with renal syndrome							
	Western equine encephalitis							
	Tick-borne encephalitis							
	Anthrax							
	Chikungunya fever			1		2		2
	Scrub typhus(Tsutsugamushi disease)						2	40
	Dengue fever		1	6	5	26	9	99
	Eastern equine encephalitis							
	Avian influenza (excluding H5N1 and H7N9)							
	Nipah virus infection							
	Japanese spotted fever						1	4
	Japanese encephalitis							
	Hantavirus pulmonary syndrome							
	Herpes B virus infection							
	Glanders							
	Brucellosis							
	Venezuelan equine encephalitis							
	Hendra virus infection							
Epidemic typhus								
Botulism								
Malaria	1		1	1	4	2	10	
Tularemia								
Lyme disease								
Lyssavirus infection(excluding rabies)								
Rift valley fever								
Melioidosis								
Legionellosis	5		2	1	26	14	275	
Leptospirosis							3	
Rocky mountain spotted fever								

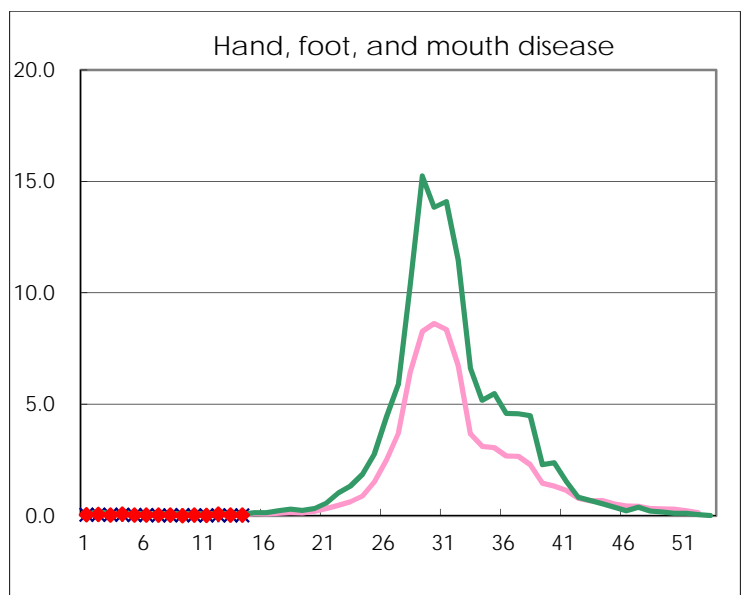
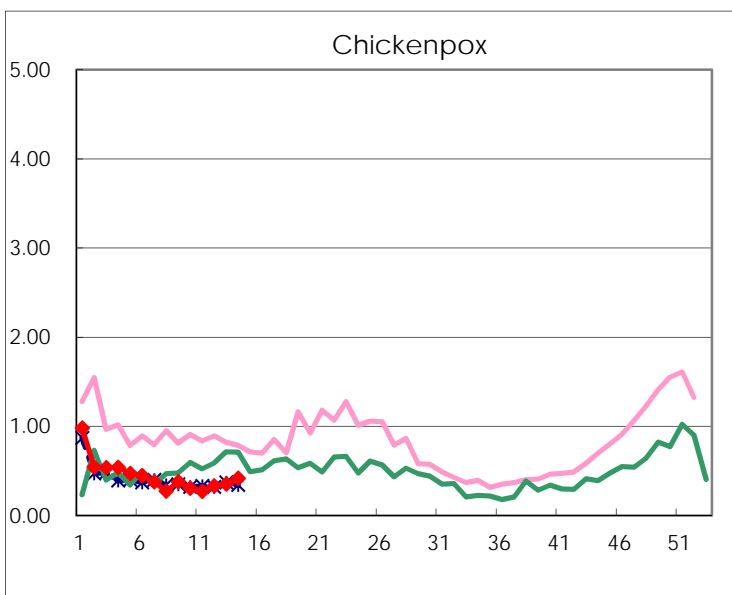
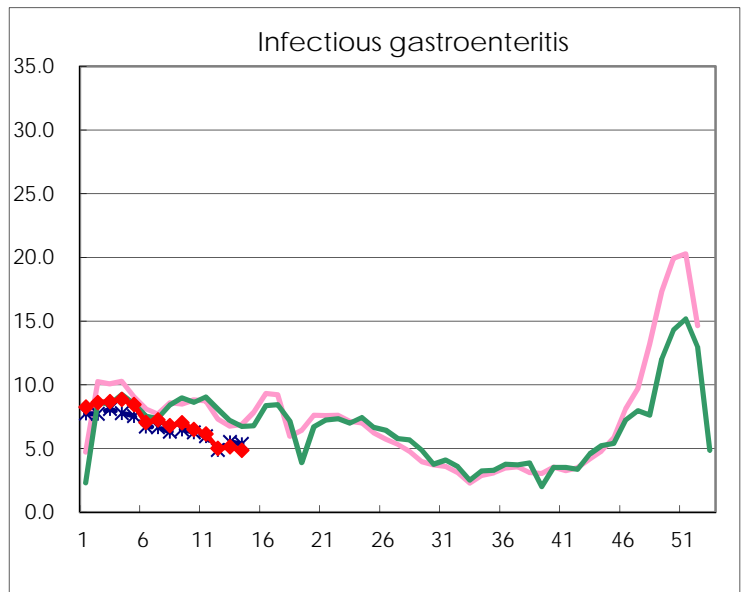
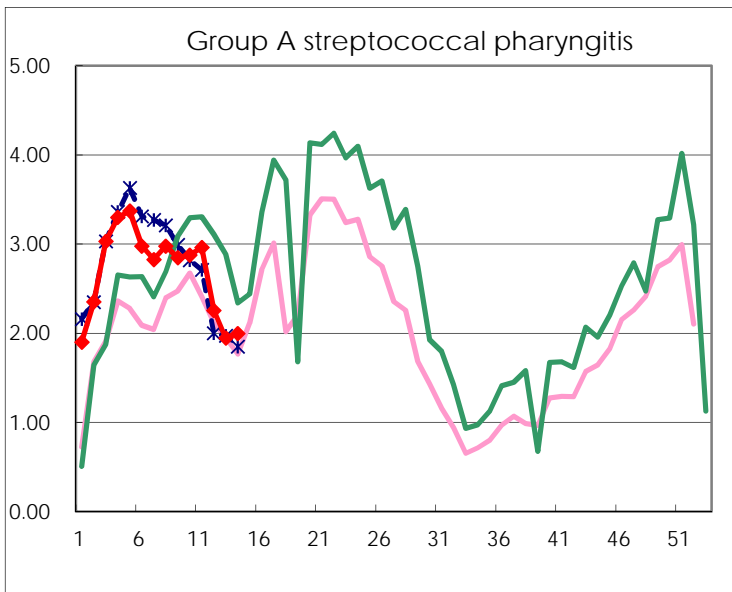
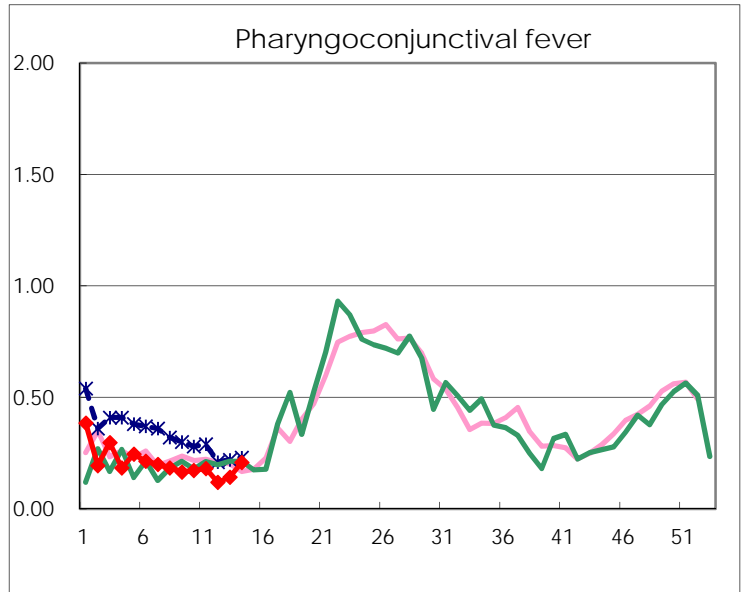
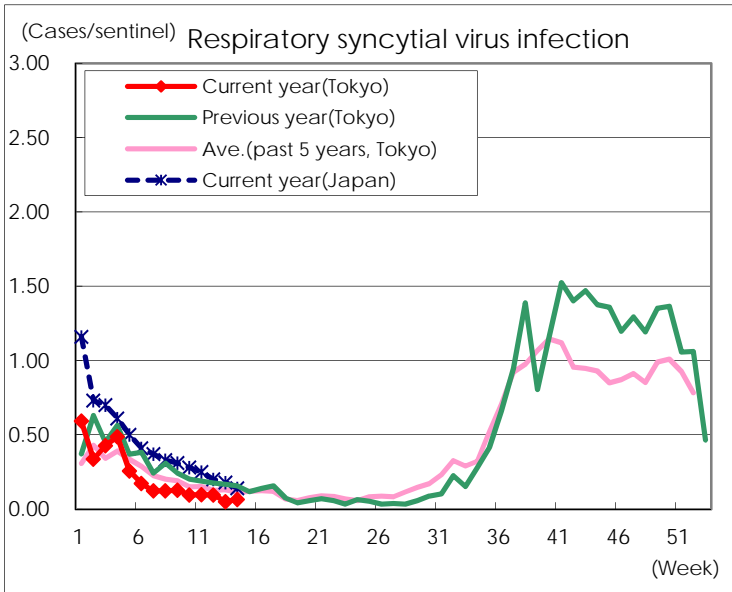
Category	Diseases	Tokyo					Japan	
		11th	12th	13th	14th	Cum 2016	14th	Cum 2016
V	Amebiasis	5	8	4	4	61	12	314
	Viral hepatitis(excluding hepatitis A and E)			2		14	1	61
	CRE infection	2	1	2	2	51	8	344
	Acute encephalitis(excluding JE and WNE)	1	1	2		45	10	315
	Cryptosporidiosis							3
	Creutzfeldt-Jakob disease	1				6	2	53
	Severe invasive streptococcal infections(TSLS)		4	1	1	24	6	152
	Acquired immunodeficiency syndrome (AIDS)	9	8	10	8	127	18	379
	Giardiasis	1		1		5		17
	Invasive <i>Haemophilus influenzae</i> disease	2	1	2	2	14	5	97
	Invasive meningococcal disease							15
	Invasive pneumococcal disease	9	7	9	6	114	41	863
	Varicella (limited to hospitalized case)		1	3		12	1	63
	Congenital rubella syndrome							
	Syphilis	21	20	37	45	443	59	961
	Disseminated cryptococcosis	1	1		1	7	4	35
	Tetanus						2	19
	Vancomycin-resistant <i>S. aureus</i> infection							
	Vancomycin-resistant Enterococcus infection						1	12
	Rubella	1				4	2	27
Measles			1		1	1	6	
MDRA infection							11	

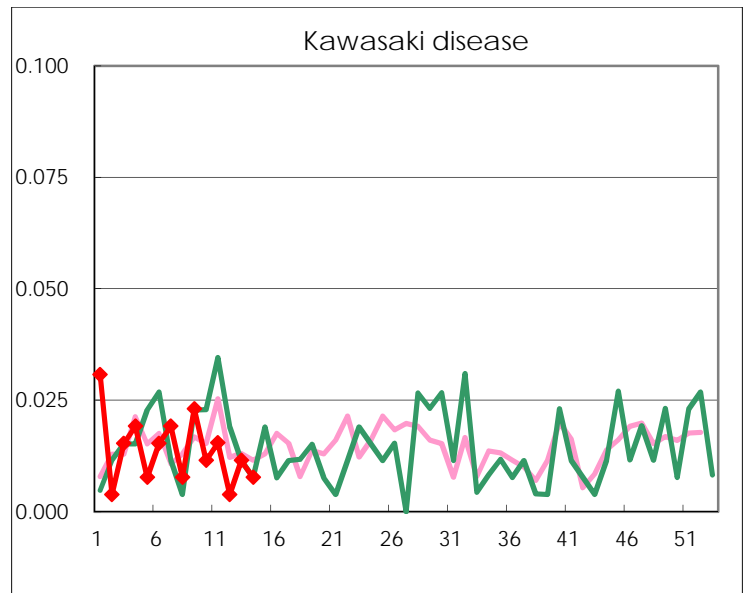
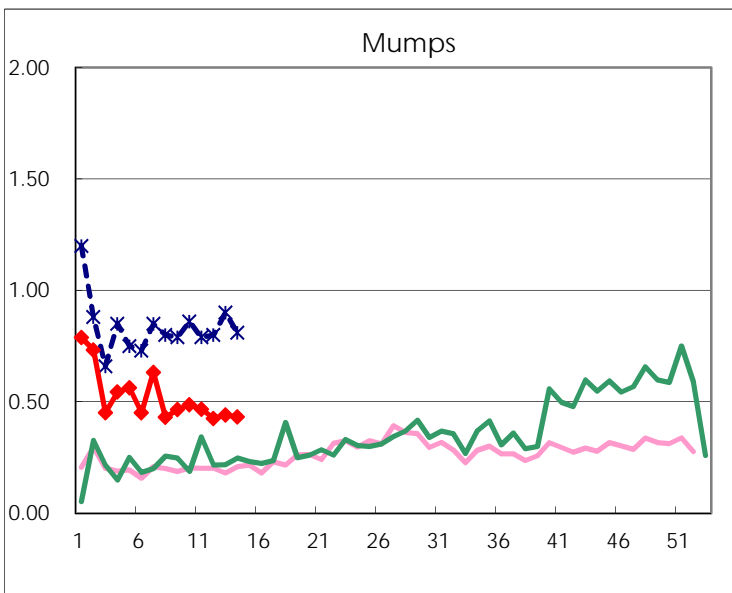
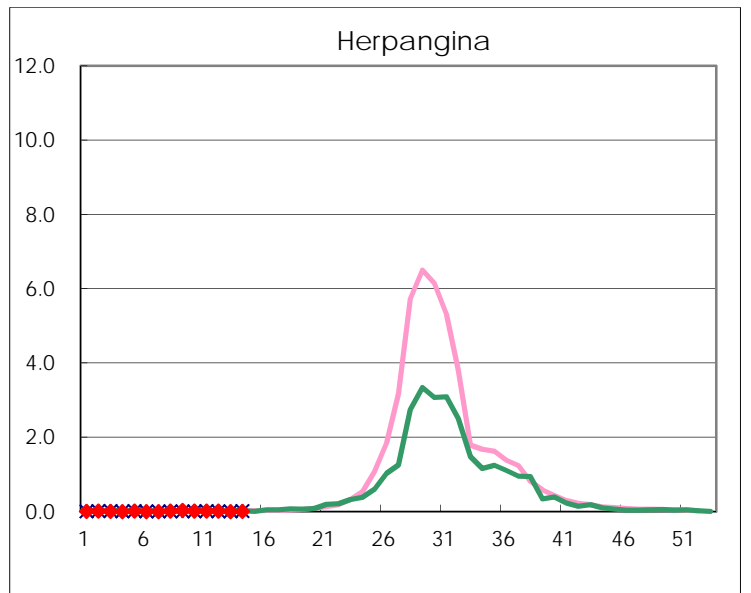
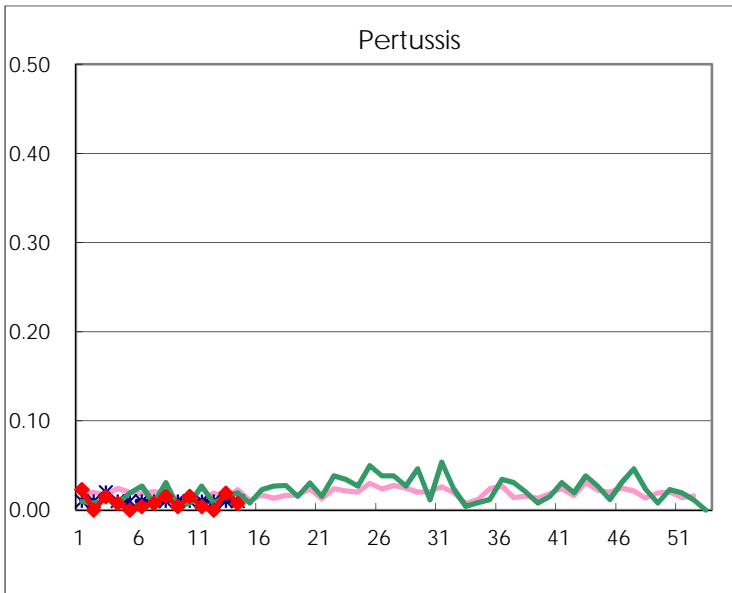
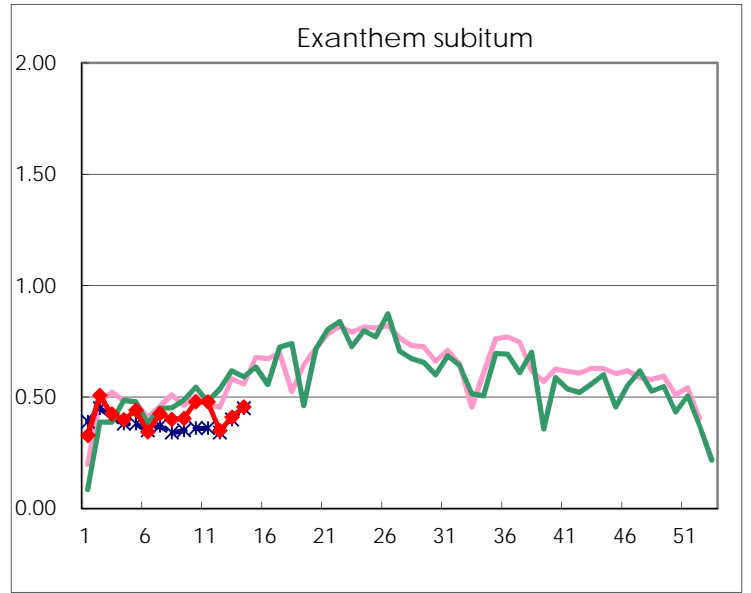
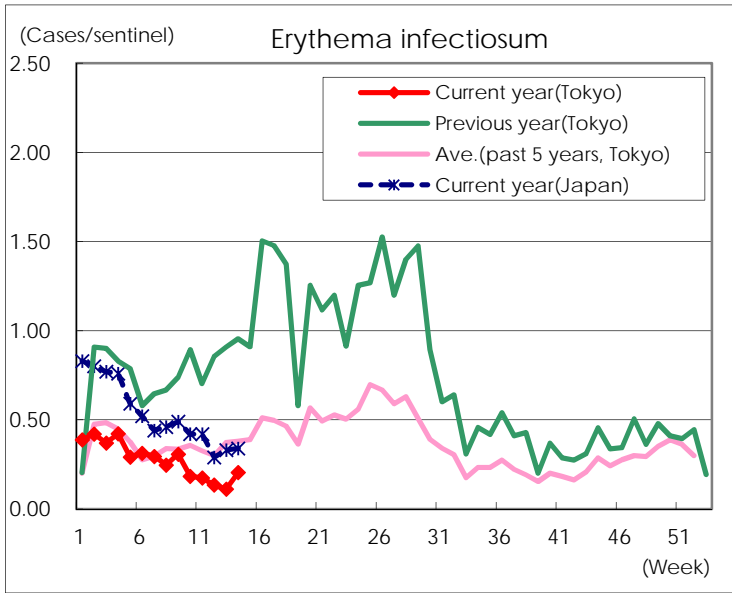
Number of patients with the diseases to be reported
by the designated clinics and hospitals

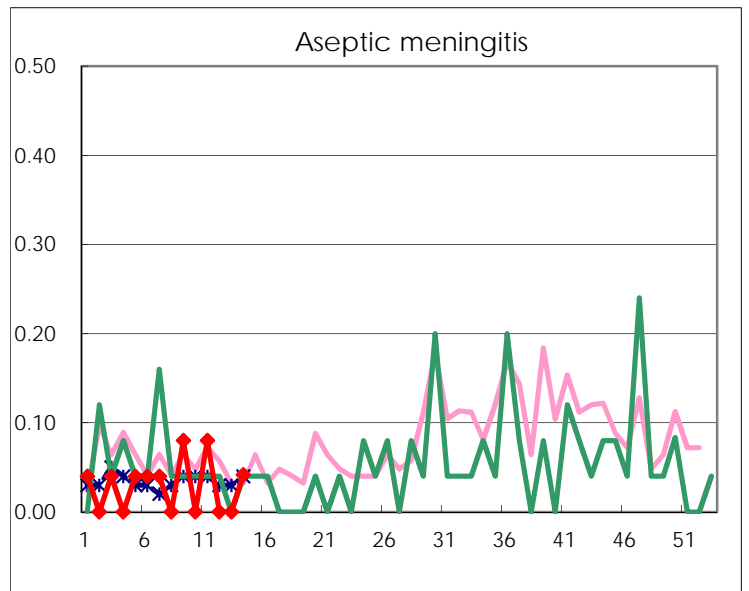
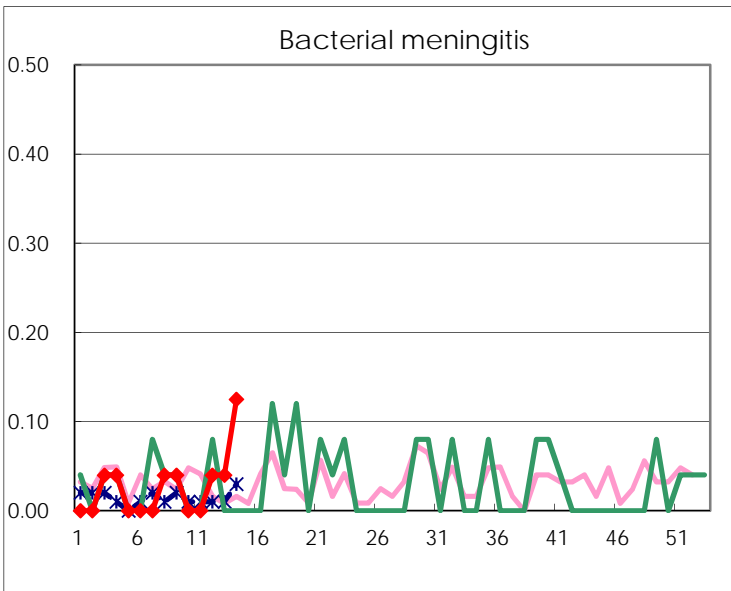
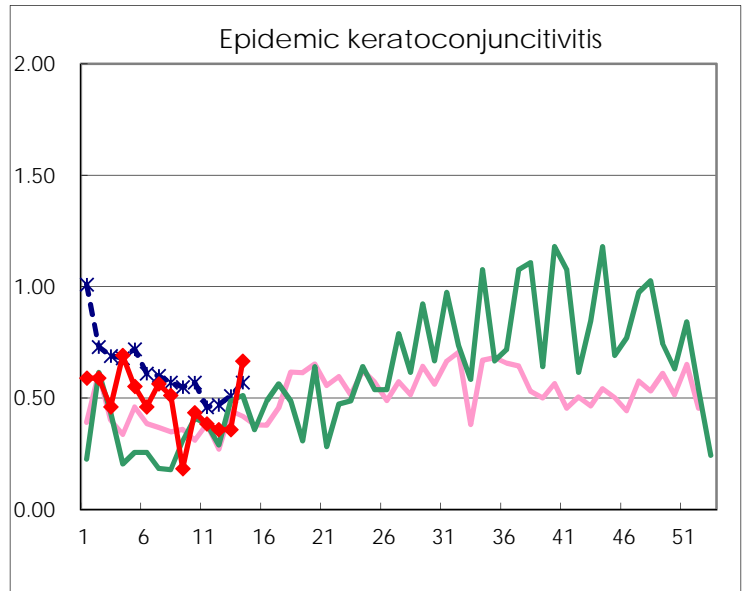
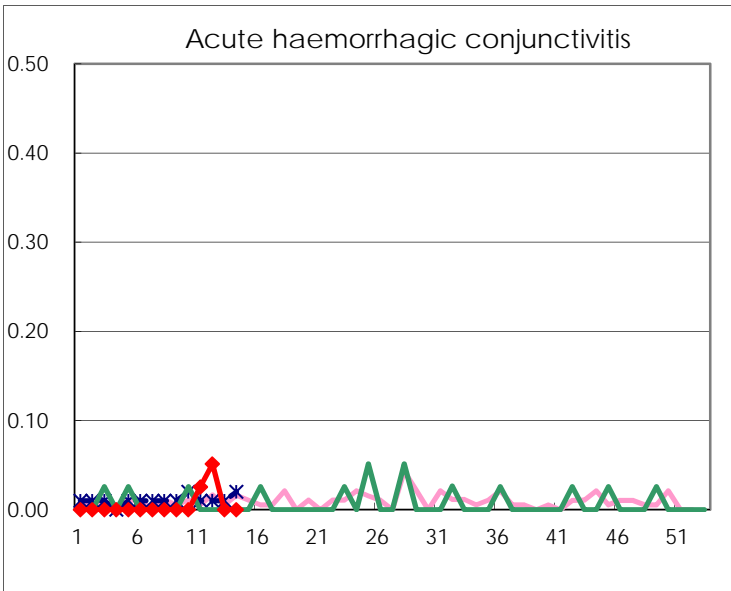
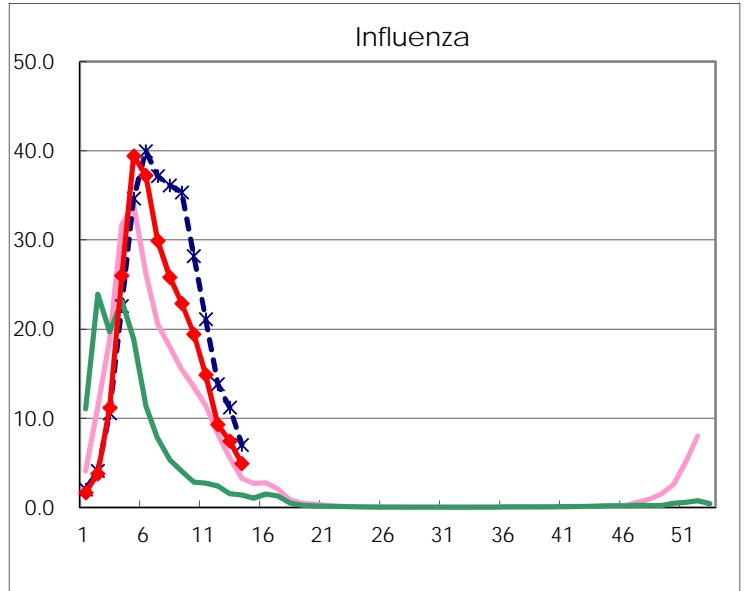
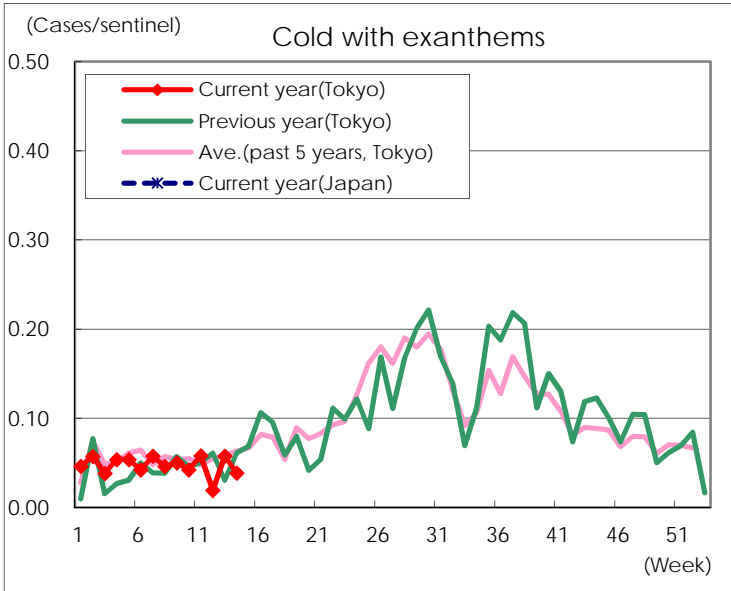
Diseases	Tokyo				
	11th	12th	13th	14th	/sentinel
Respiratory syncytial virus infection	25	25	13	17	0.07
Pharyngoconjunctival fever	47	31	37	54	0.21
Group A streptococcal pharyngitis	767	589	508	517	2.00
Infectious gastroenteritis	1,591	1,303	1,337	1,259	4.86
Chickenpox	70	86	92	108	0.42
Hand, foot, and mouth disease	5	18	6	9	0.03
Erythema infectiosum	45	35	29	53	0.20
Exanthem subitum	124	91	107	118	0.46
Pertussis	1		5	2	0.01
Herpangina	5	4	1	2	0.01
Mumps	121	111	115	112	0.43
Kawasaki disease	4	1	3	2	0.01
Cold with exanthems	15	5	15	10	0.04
Influenza	6,138	3,860	3,091	2,028	4.91
Acute hemorrhagic conjunctivitis	1	2			
Epidemic keratoconjunctivitis	15	14	14	26	0.67
Bacterial meningitis		1	1	3	0.13
Aseptic meningitis	2			1	0.04
Mycoplasma pneumonia	13	5	10	5	0.21
Chlamydial pneumonia (excluding psittacosis)	1			1	0.04
Infectious gastroenteritis (only by Rotavirus)	6	5	1	5	0.21
Influenza-Associated Hospitalizations	33	22	8	11	0.46

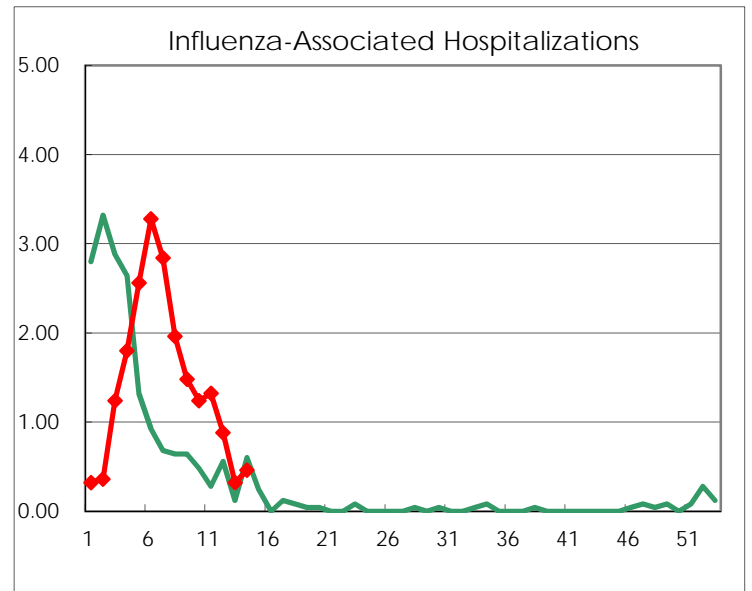
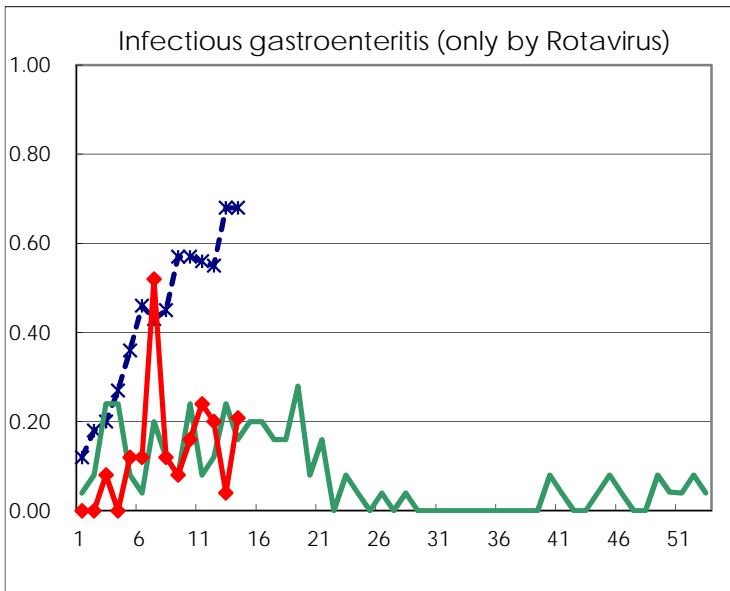
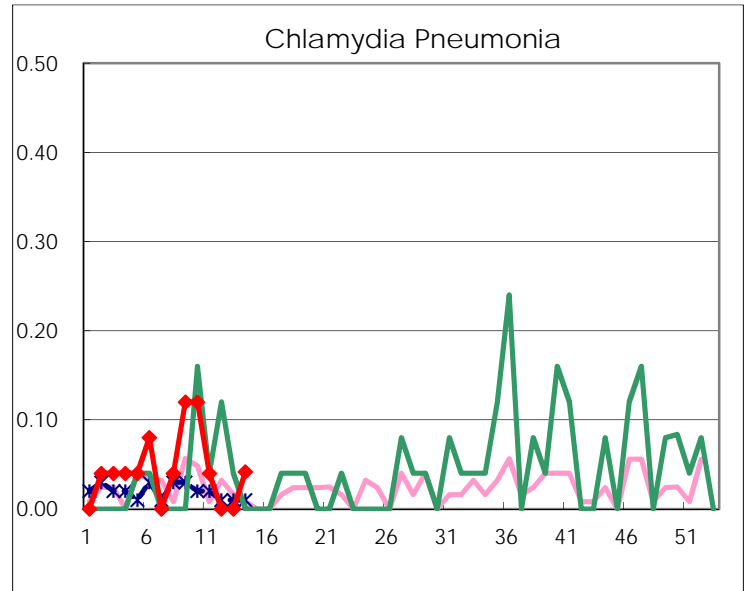
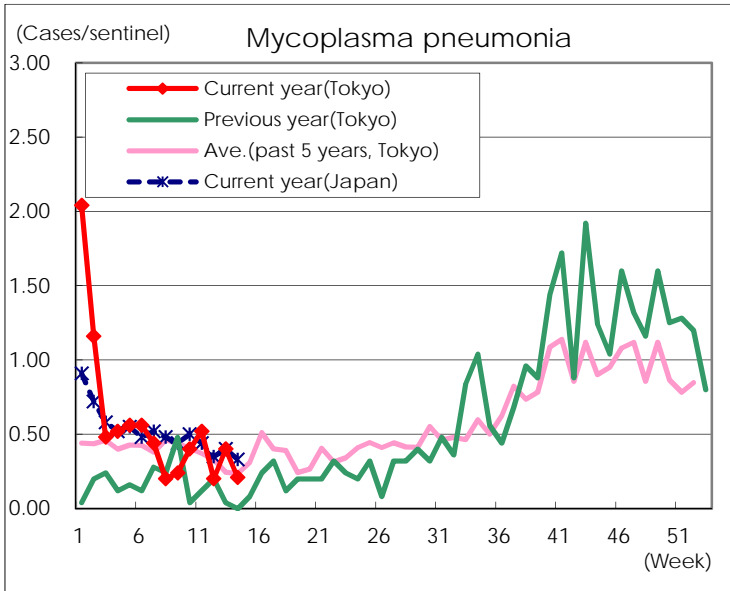
(Blank means 0.)

Disease Trend Graph (weekly reported cases per sentinel in comparison)









Number of sentinel facilities for weekly reporting		
Types of sentinels	Number of sentinels	Sentinels having reported
Pediatric	264	259
Influenza	419	413
Ophthalmic	39	39
Specially-designated	25	24