

28 April 2016 / Number 16

Surveillance System in Tokyo, Japan

The infectious diseases which all physicians must report

All physicians must report to health centers the incidence of the diseases which are shown at page one. Health centers electronically report the individual cases to Tokyo Metropolitan Infectious Disease Surveillance Center.

The infectious diseases required to be reported by the sentinels

The numbers of patients who visit the sentinel clinics or hospitals during a week are reported to health centers in Tokyo. And they electronically report the numbers to Tokyo Metropolitan Infectious Disease Surveillance Center. We have about 500 sentinel clinics and hospitals in Tokyo.

Tokyo Metropolitan Institute of Public Health

TEL:81-3-3363-3213 FAX:81-3-5332-7365

e-mail:www@tokyo-eiken.go.jp

URL:idsc.tokyo-eiken.go.jp/

Number of patients with the diseases which all physicians must report

Category	Diseases	Tokyo					Japan	
		13th	14th	15th	16th	Cum 2016	16th	Cum 2016
I	Ebola hemorrhagic fever							
	Crimean-Congo hemorrhagic fever							
	Smallpox							
	South American hemorrhagic fever							
	Plague							
	Marburg disease							
	Lassa fever							
II	Acute poliomyelitis							
	Tuberculosis	77	58	72	64	1,072	375	6,839
	Diphtheria							
	Severe Acute Respiratory Syndrome(SARS)							
	Middle East Respiratory Syndrome (MERS)							
	Avian influenza H5N1							
	Avian influenza H7N9							
III	Cholera							
	Shigellosis		1		2	13	2	42
	Enterohemorrhagic Escherichia coli infection	1	5	1	5	28	18	199
	Typhoid fever			2		9	1	15
	Paratyphoid fever		1		1	4	1	5
IV	Hepatitis E		2			16	8	130
	West Nile fever							
	Hepatitis A	5	5	1	2	31	4	120
	Echinococcosis							3
	Yellow fever							
	Psittacosis							1
	Omsk hemorrhagic fever							
	Relapsing fever							1
	Kyasanur forest disease							
	Q fever							
	Rabies							
	Coccidioidomycosis							
	Monkeypox							
	Zika virus infection						1	5
	Severe Fever with Thrombocytopenia Syndrome							5
	Hemorrhagic fever with renal syndrome							
	Western equine encephalitis							
	Tick-borne encephalitis							
	Anthrax							
	Chikungunya fever	1				2		2
	Scrub typhus(Tsutsugamushi disease)							48
	Dengue fever	6	5	4		30	7	109
	Eastern equine encephalitis							
	Avian influenza (excluding H5N1 and H7N9)							
	Nipah virus infection							
	Japanese spotted fever						7	16
	Japanese encephalitis							
	Hantavirus pulmonary syndrome							
	Herpes B virus infection							
	Glanders							
	Brucellosis							
	Venezuelan equine encephalitis							
Hendra virus infection								
Epidemic typhus								
Botulism				1	1	1	1	
Malaria	1	1	1	1	6	1	14	
Tularemia								
Lyme disease								
Lyssavirus infection(excluding rabies)								
Rift valley fever								
Melioidosis								
Legionellosis	2	1	2		28	17	312	
Leptospirosis							3	
Rocky mountain spotted fever								

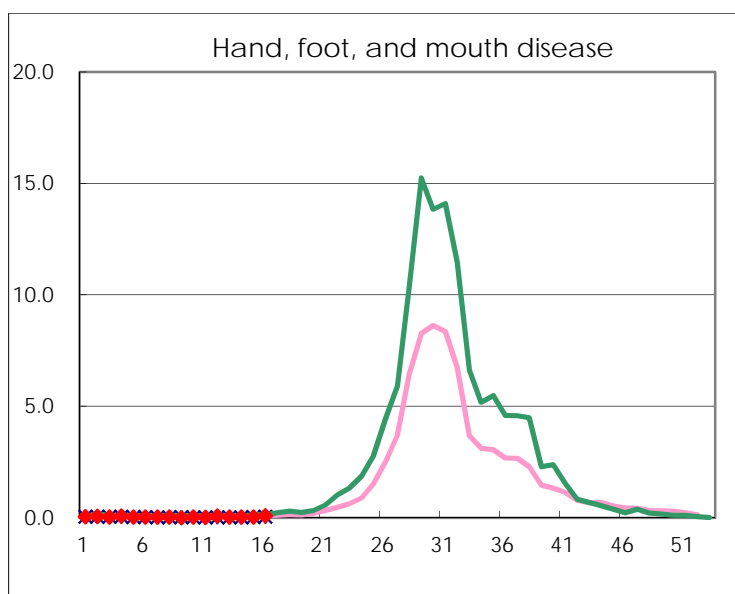
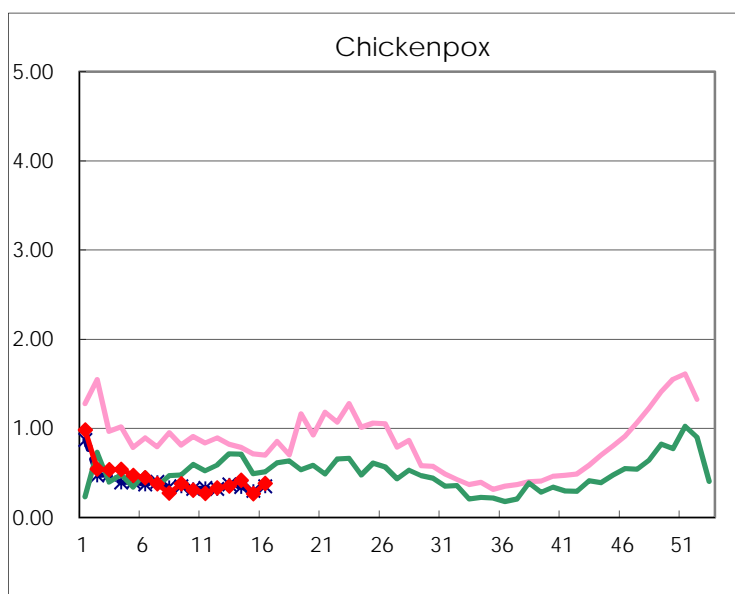
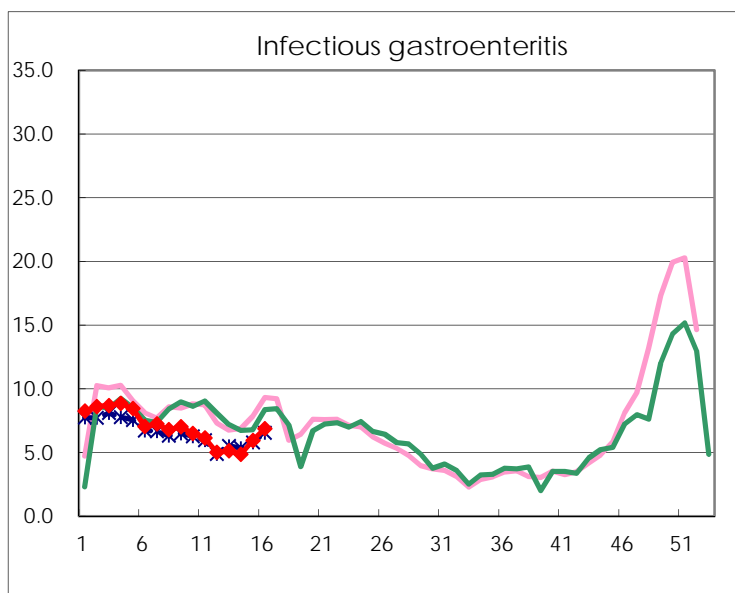
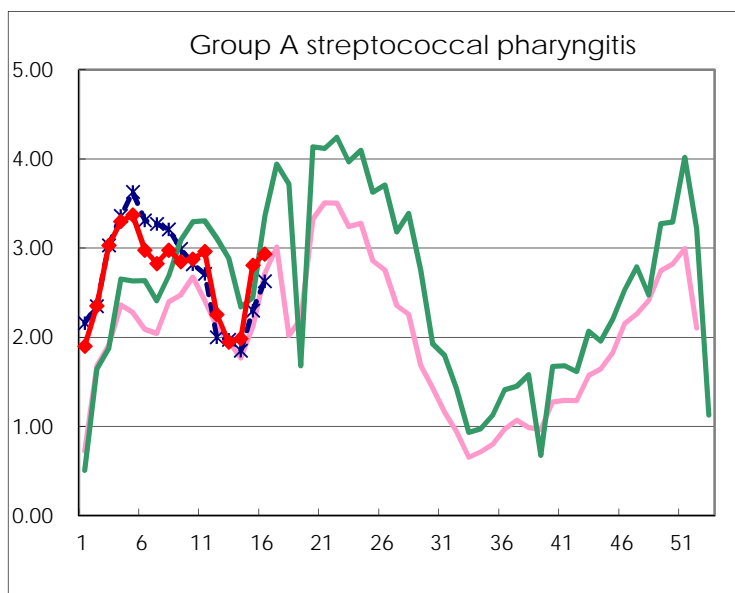
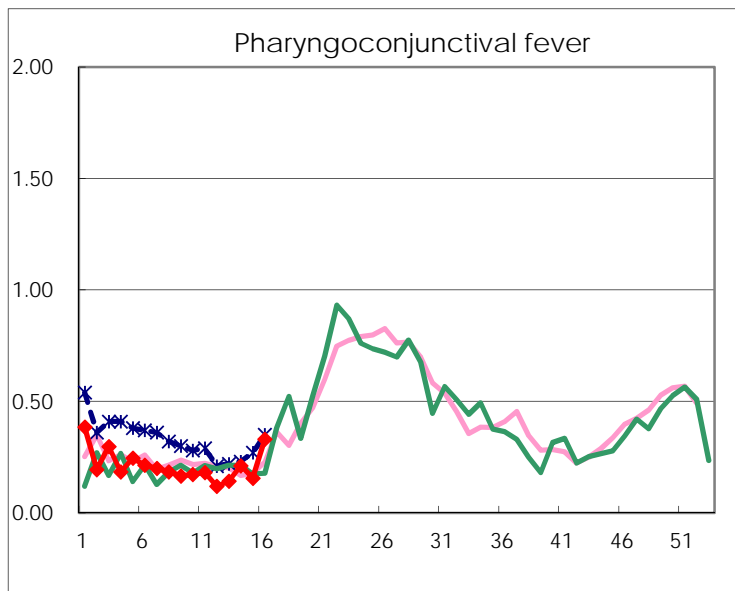
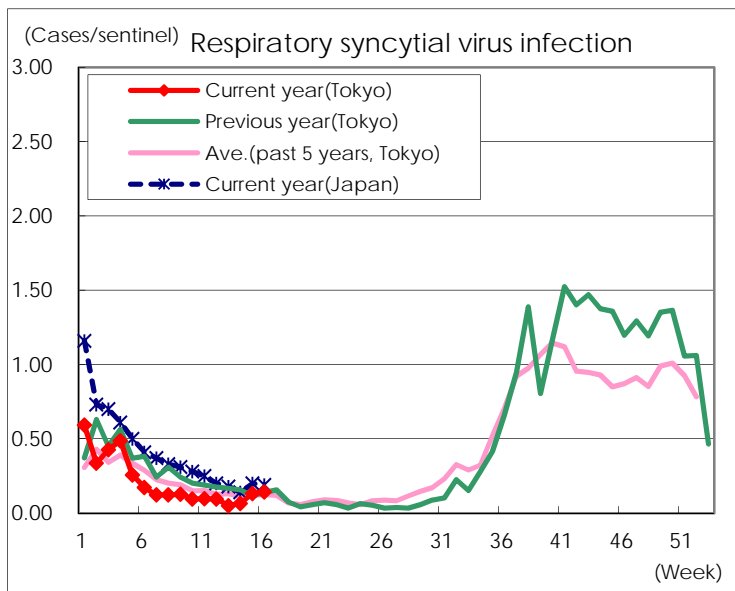
Category	Diseases	Tokyo					Japan	
		13th	14th	15th	16th	Cum 2016	16th	Cum 2016
V	Amebiasis	4	4	3	3	67	15	365
	Viral hepatitis(excluding hepatitis A and E)	2			2	16	3	72
	CRE infection	2	2	8	3	62	12	394
	Acute encephalitis(excluding JE and WNE)	2		1	1	47	7	344
	Cryptosporidiosis						1	4
	Creutzfeldt-Jakob disease			1		7	3	58
	Severe invasive streptococcal infections(TSLS)	1	1		2	26	7	173
	Acquired immunodeficiency syndrome (AIDS)	10	8	13	12	152	18	449
	Giardiasis	1		1		6		20
	Invasive <i>Haemophilus influenzae</i> disease	2	2		1	15	2	104
	Invasive meningococcal disease			1		1	1	18
	Invasive pneumococcal disease	9	6	13	9	136	34	987
	Varicella (limited to hospitalized case)	3		1	1	14	3	76
	Congenital rubella syndrome							
	Syphilis	37	45	18	42	503	59	1,114
	Disseminated cryptococcosis		1	1	1	9	2	39
	Tetanus				1	1	3	23
	Vancomycin-resistant <i>S. aureus</i> infection							
	Vancomycin-resistant Enterococcus infection							12
	Rubella			1	3	8	1	36
Measles	1				1		5	
MDRA infection						1	13	

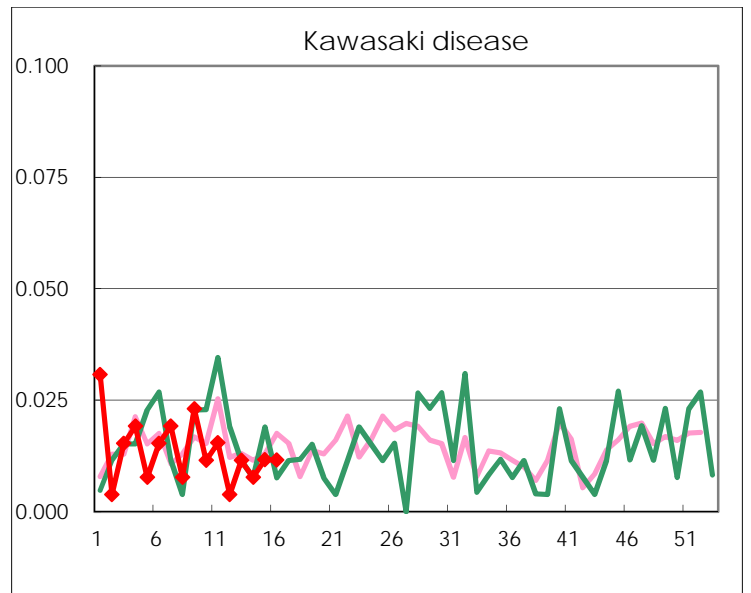
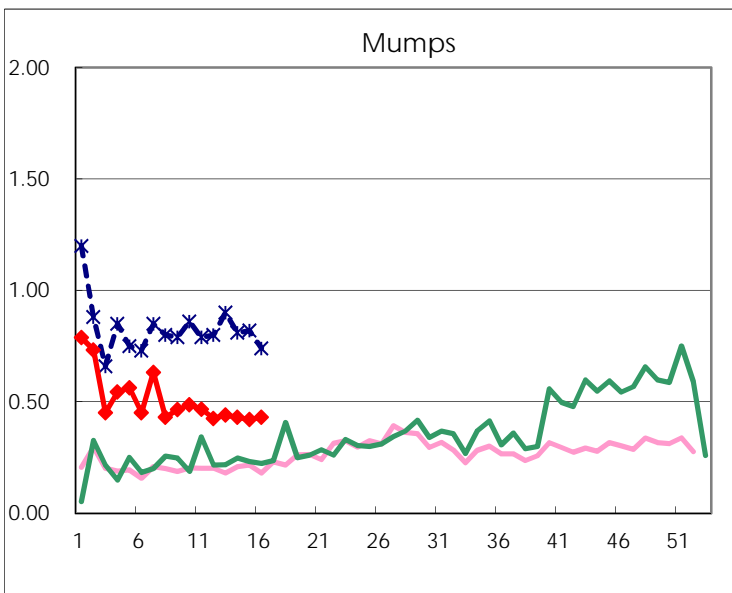
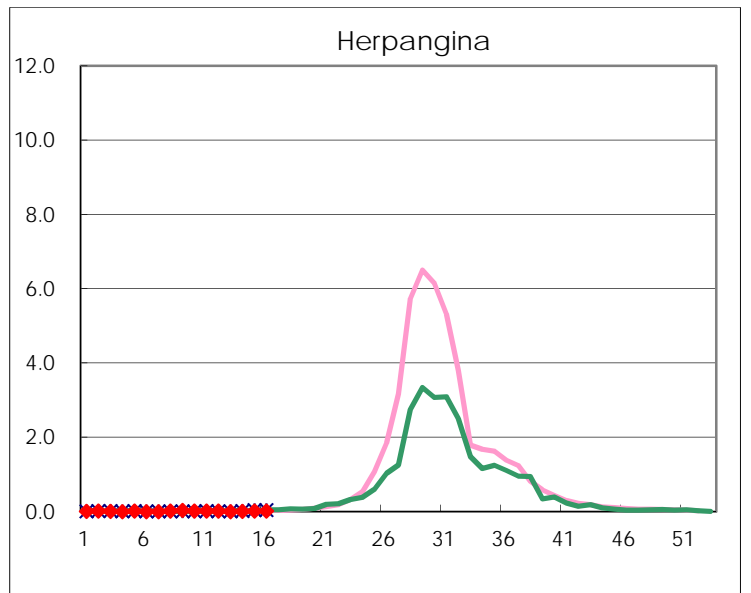
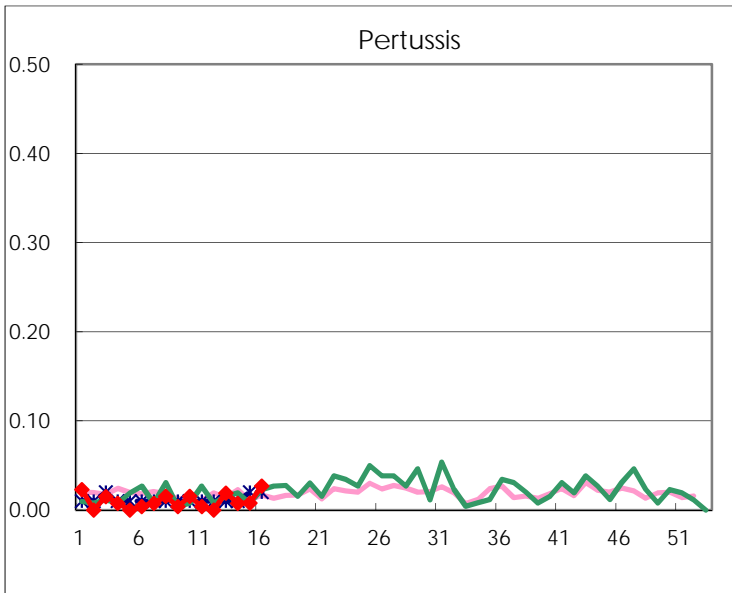
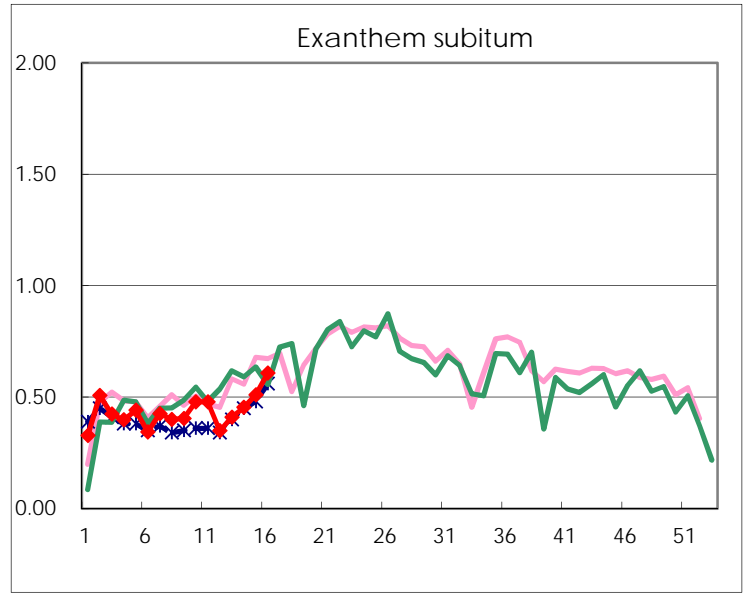
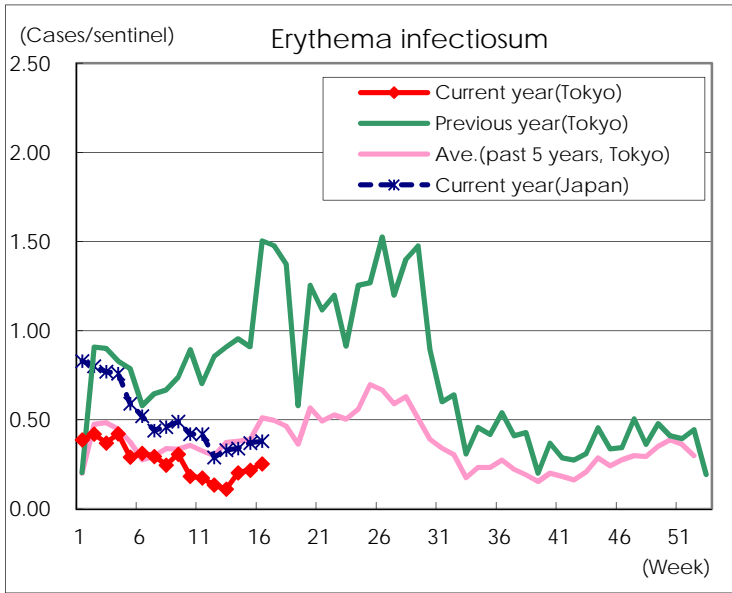
Number of patients with the diseases to be reported
by the designated clinics and hospitals

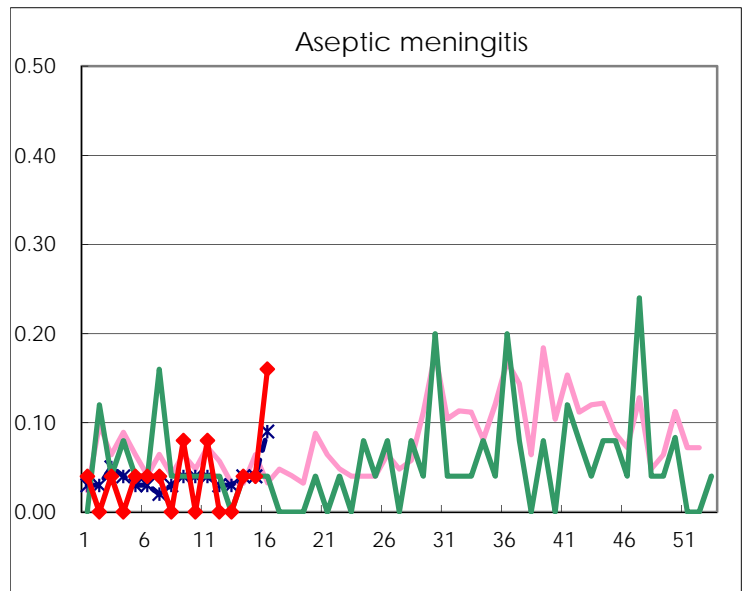
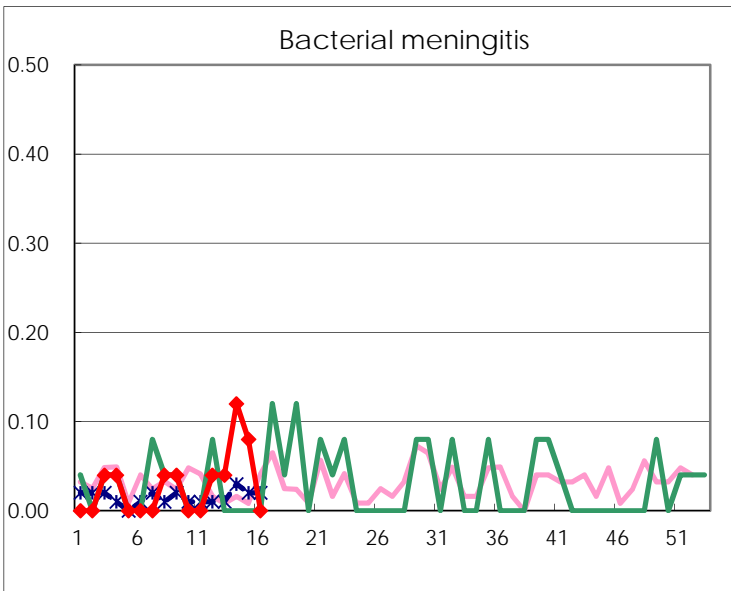
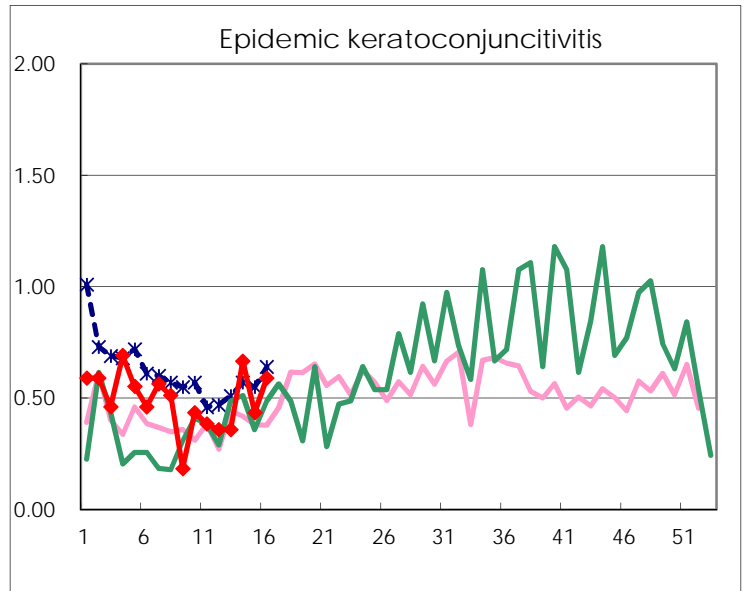
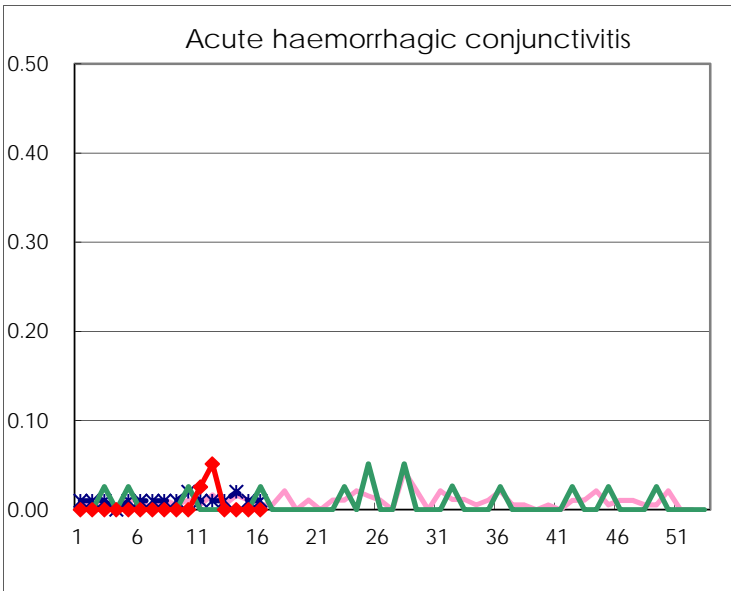
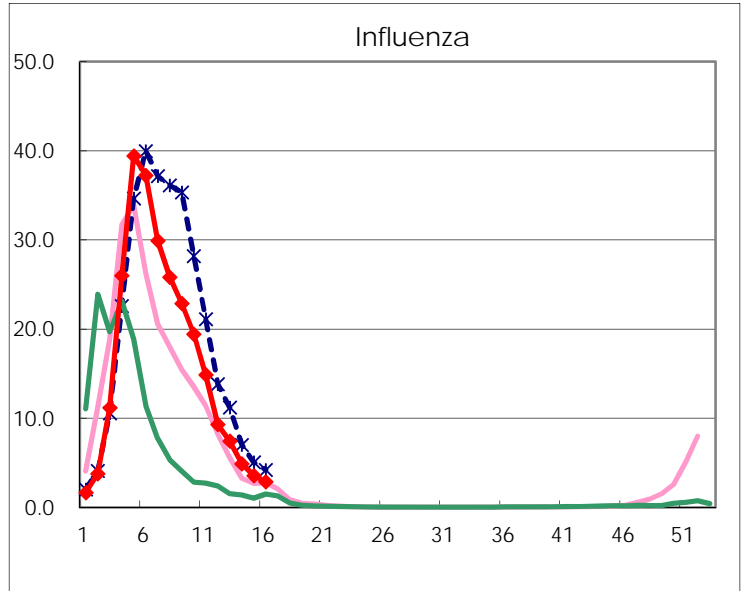
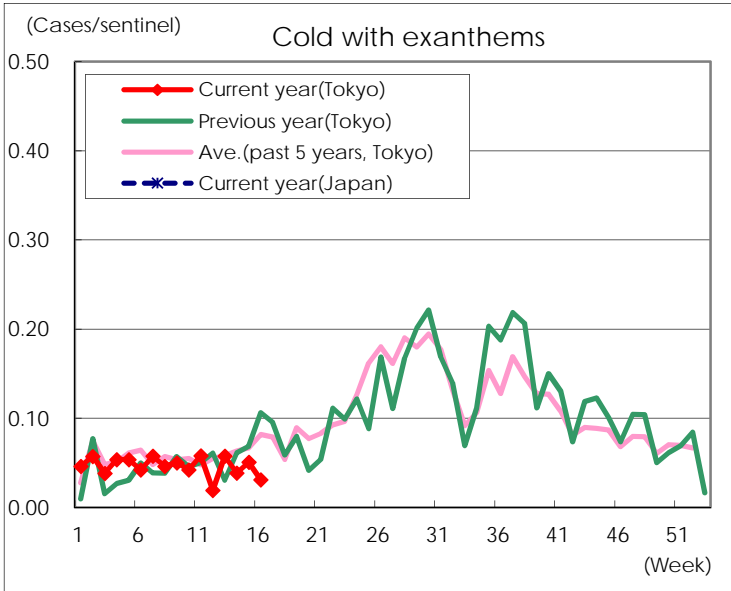
Diseases	Tokyo				
	13th	14th	15th	16th	/sentinel
Respiratory syncytial virus infection	13	17	34	37	0.14
Pharyngoconjunctival fever	37	55	40	86	0.33
Group A streptococcal pharyngitis	508	516	722	763	2.93
Infectious gastroenteritis	1,337	1,259	1,527	1,782	6.85
Chickenpox	92	108	68	99	0.38
Hand, foot, and mouth disease	6	9	8	22	0.08
Erythema infectiosum	29	53	56	66	0.25
Exanthem subitum	107	118	131	158	0.61
Pertussis	5	2	2	7	0.03
Herpangina	1	2	4	4	0.02
Mumps	115	112	108	112	0.43
Kawasaki disease	3	2	3	3	0.01
Cold with exanthems	15	10	13	8	0.03
Influenza	3,091	2,028	1,469	1,186	2.87
Acute hemorrhagic conjunctivitis					
Epidemic keratoconjunctivitis	14	26	17	23	0.59
Bacterial meningitis	1	3	2		
Aseptic meningitis		1	1	4	0.16
Mycoplasma pneumonia	10	5	8	3	0.12
Chlamydial pneumonia (excluding psittacosis)		1			
Infectious gastroenteritis (only by Rotavirus)	1	5	12	7	0.28
Influenza-Associated Hospitalizations	8	12	6	8	0.32

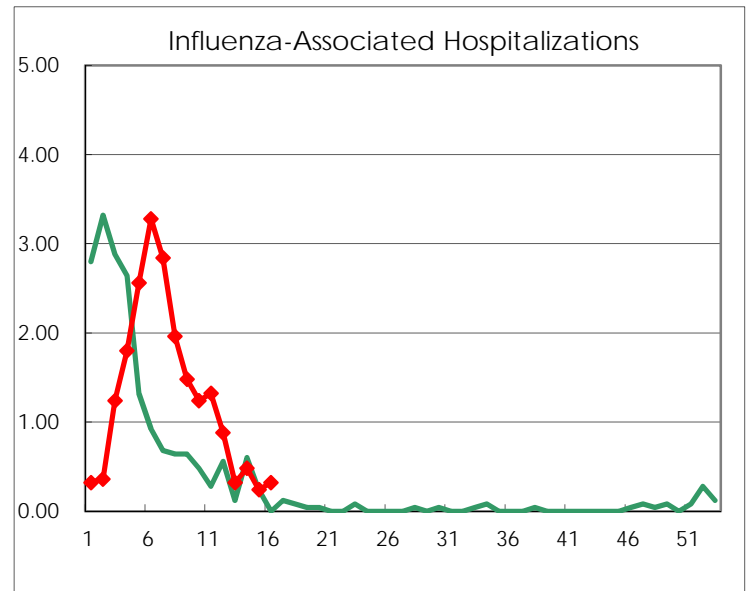
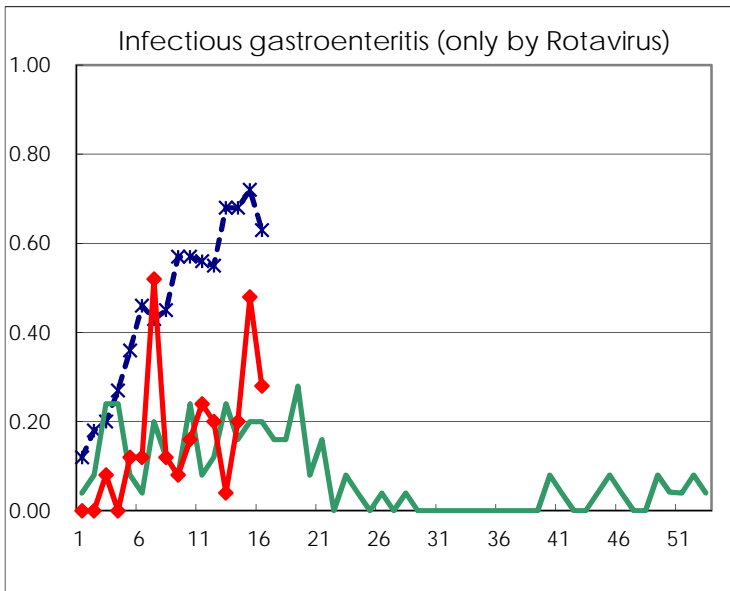
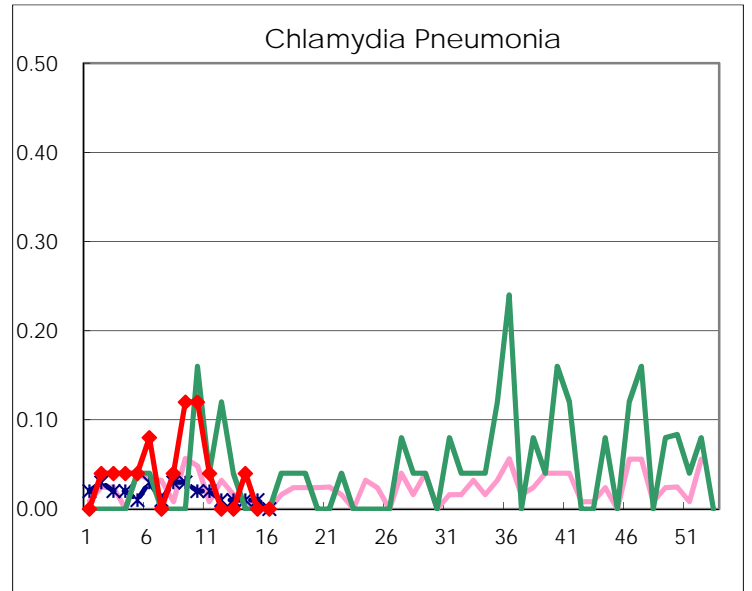
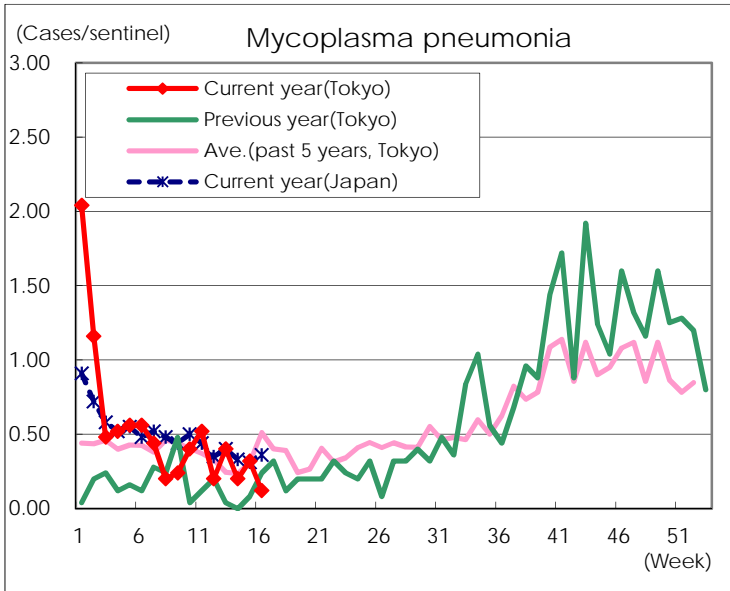
(Blank means 0.)

Disease Trend Graph (weekly reported cases per sentinel in comparison)









Number of sentinel facilities for weekly reporting		
Types of sentinels	Number of sentinels	Sentinels having reported
Pediatric	264	260
Influenza	419	413
Ophthalmic	39	39
Specially-designated	25	25