

10 May 2016 / Number 17

Surveillance System in Tokyo, Japan

The infectious diseases which all physicians must report

All physicians must report to health centers the incidence of the diseases which are shown at page one. Health centers electronically report the individual cases to Tokyo Metropolitan Infectious Disease Surveillance Center.

The infectious diseases required to be reported by the sentinels

The numbers of patients who visit the sentinel clinics or hospitals during a week are reported to health centers in Tokyo. And they electronically report the numbers to Tokyo Metropolitan Infectious Disease Surveillance Center. We have about 500 sentinel clinics and hospitals in Tokyo.

Tokyo Metropolitan Institute of Public Health

TEL:81-3-3363-3213 FAX:81-3-5332-7365

e-mail:www@tokyo-eiken.go.jp

URL:idsc.tokyo-eiken.go.jp/

Number of patients with the diseases which all physicians must report

Category	Diseases	Tokyo					Japan	
		14th	15th	16th	17th	Cum 2016	17th	Cum 2016
I	Ebola hemorrhagic fever							
	Crimean-Congo hemorrhagic fever							
	Smallpox							
	South American hemorrhagic fever							
	Plague							
	Marburg disease							
II	Lassa fever							
	Acute poliomyelitis							
	Tuberculosis	62	74	69	68	1,151	335	7,266
	Diphtheria							
	Severe Acute Respiratory Syndrome(SARS)							
	Middle East Respiratory Syndrome (MERS)							
III	Avian influenza H5N1							
	Avian influenza H7N9							
	Cholera						1	1
	Shigellosis	1		2	2	15	1	44
	Enterohemorrhagic Escherichia coli infection	5	1	6	2	31	20	223
IV	Typhoid fever		2			9		15
	Paratyphoid fever	1		1		4		5
	Hepatitis E	2			1	17	4	138
	West Nile fever							
	Hepatitis A	5	1	2	1	32	4	127
	Echinococcosis							3
	Yellow fever							
	Psittacosis							1
	Omsk hemorrhagic fever							
	Relapsing fever							1
	Kyasanur forest disease							
	Q fever							
	Rabies							
	Coccidioidomycosis							
	Monkeypox							
	Zika virus infection							5
	Severe Fever with Thrombocytopenia Syndrome						1	6
	Hemorrhagic fever with renal syndrome							
	Western equine encephalitis							
	Tick-borne encephalitis							
	Anthrax							
	Chikungunya fever					2		2
	Scrub typhus(Tsutsugamushi disease)						3	51
	Dengue fever	5	4		3	33	4	113
	Eastern equine encephalitis							
	Avian influenza (excluding H5N1 and H7N9)							
	Nipah virus infection							
	Japanese spotted fever						2	19
	Japanese encephalitis							
	Hantavirus pulmonary syndrome							
	Herpes B virus infection							
	Glanders							
Brucellosis								
Venezuelan equine encephalitis								
Hendra virus infection								
Epidemic typhus								
Botulism			1		1		1	
Malaria	1	1	1		6		14	
Tularemia								
Lyme disease								
Lyssavirus infection(excluding rabies)								
Rift valley fever								
Melioidosis								
Legionellosis	1	2		3	31	16	333	
Leptospirosis							3	
Rocky mountain spotted fever								

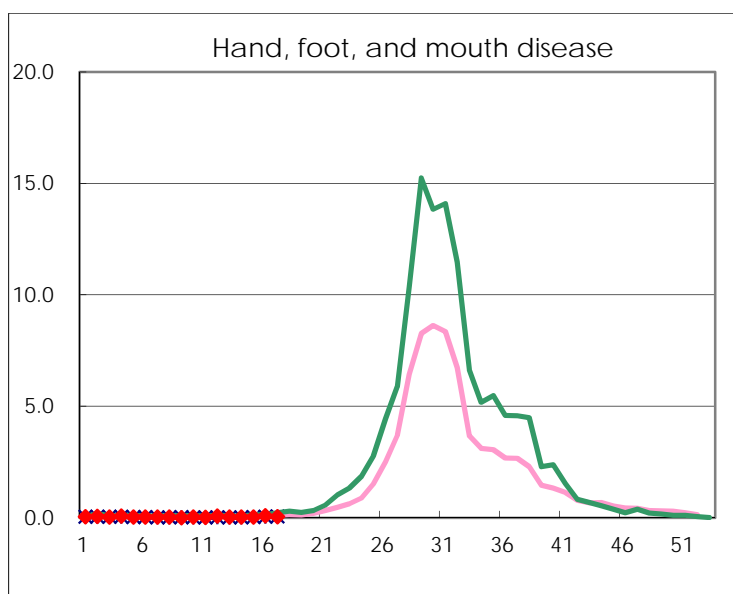
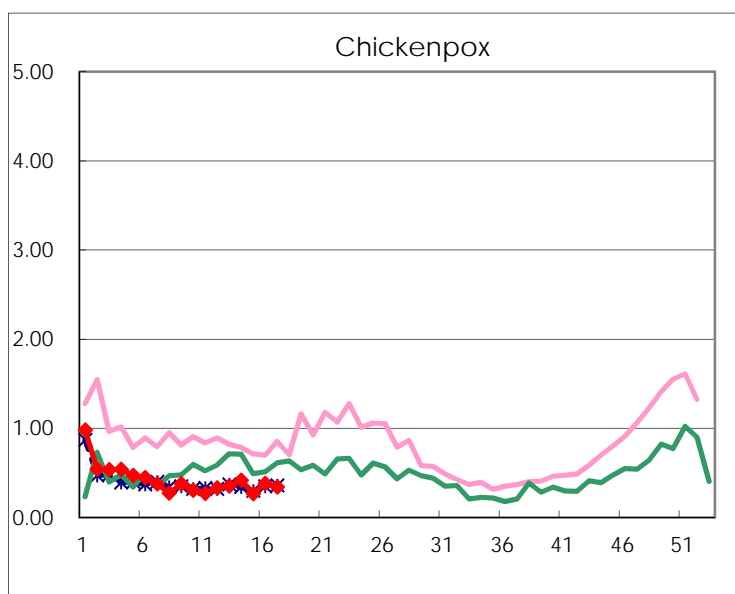
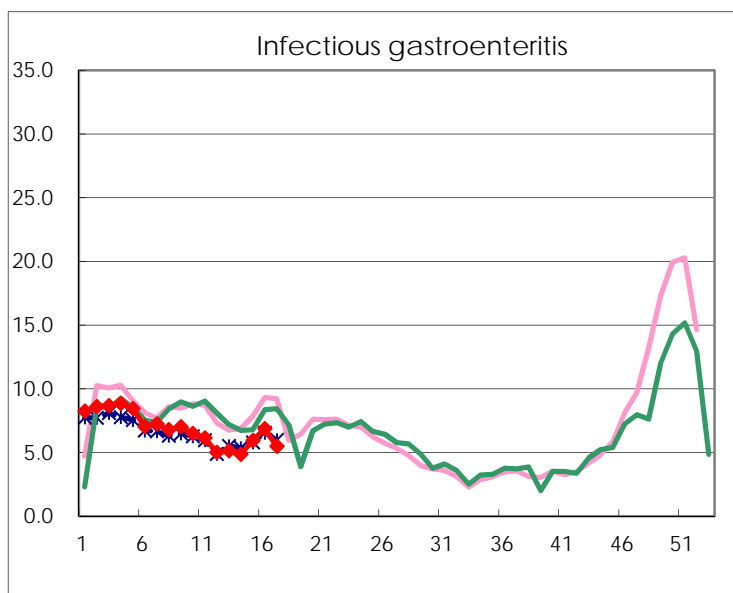
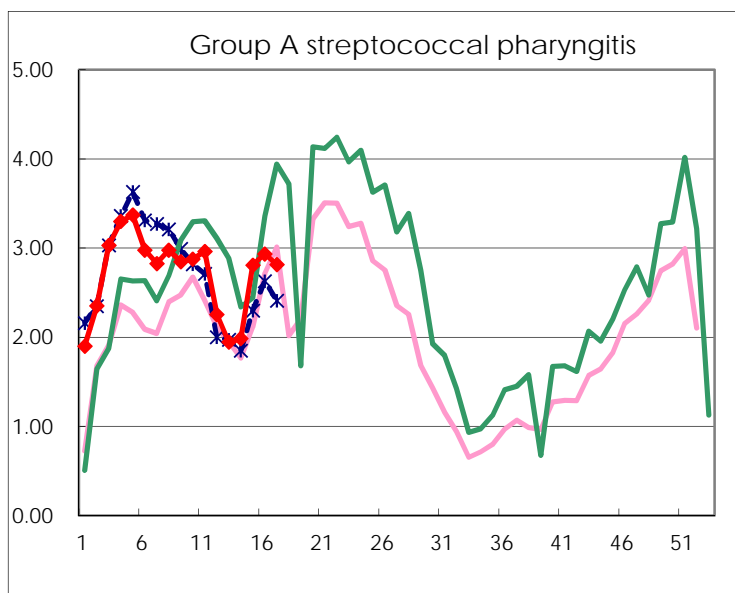
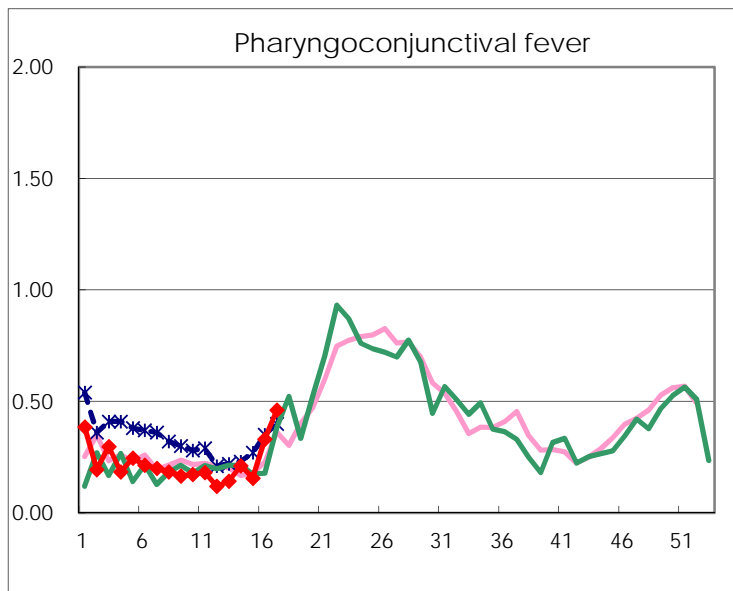
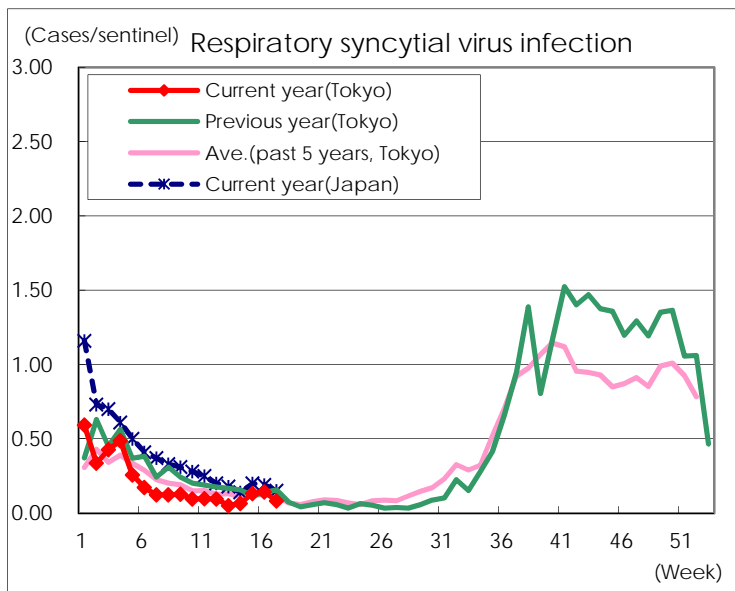
Category	Diseases	Tokyo					Japan	
		14th	15th	16th	17th	Cum 2016	17th	Cum 2016
V	Amebiasis	4	3	3	6	73	18	391
	Viral hepatitis(excluding hepatitis A and E)			2		16	1	75
	CRE infection	2	8	3		62	19	419
	Acute encephalitis(excluding JE and WNE)		1	1	1	48	9	357
	Cryptosporidiosis							4
	Creutzfeldt-Jakob disease		1		2	9	5	65
	Severe invasive streptococcal infections(TSLS)	1		2		26	7	178
	Acquired immunodeficiency syndrome (AIDS)	8	13	12	11	163	13	468
	Giardiasis		1			6		21
	Invasive <i>Haemophilus influenzae</i> disease	2		1	1	16	3	114
	Invasive meningococcal disease		1			1		18
	Invasive pneumococcal disease	6	13	9	10	146	47	1,055
	Varicella (limited to hospitalized case)		1	1	1	15	4	84
	Congenital rubella syndrome							
	Syphilis	45	18	42	26	529	50	1,188
	Disseminated cryptococcosis	1	1	1		9	1	40
	Tetanus			1	1	2	1	24
	Vancomycin-resistant <i>S. aureus</i> infection							
	Vancomycin-resistant Enterococcus infection							12
	Rubella		1	3		8	2	38
Measles					1	1	6	
MDRA infection						1	14	

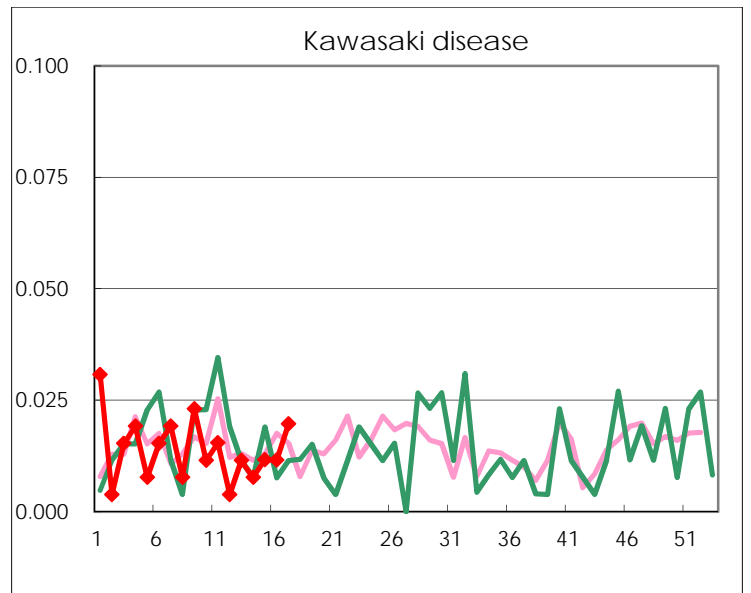
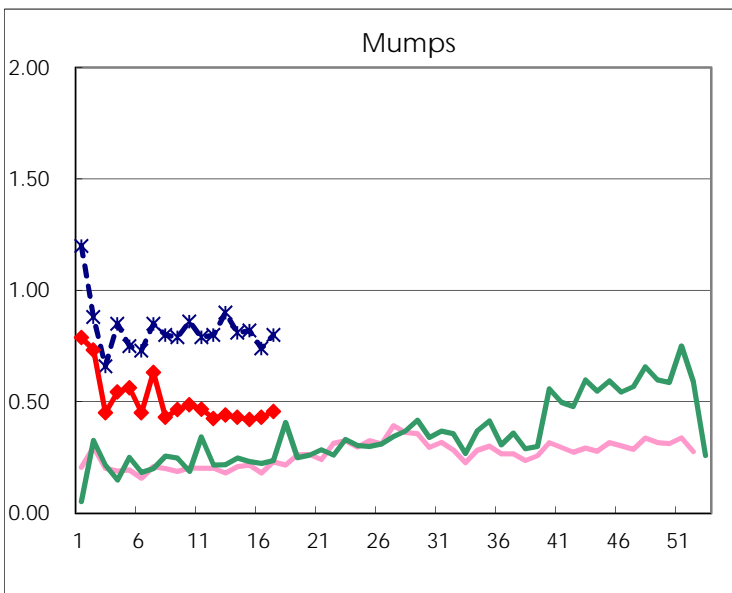
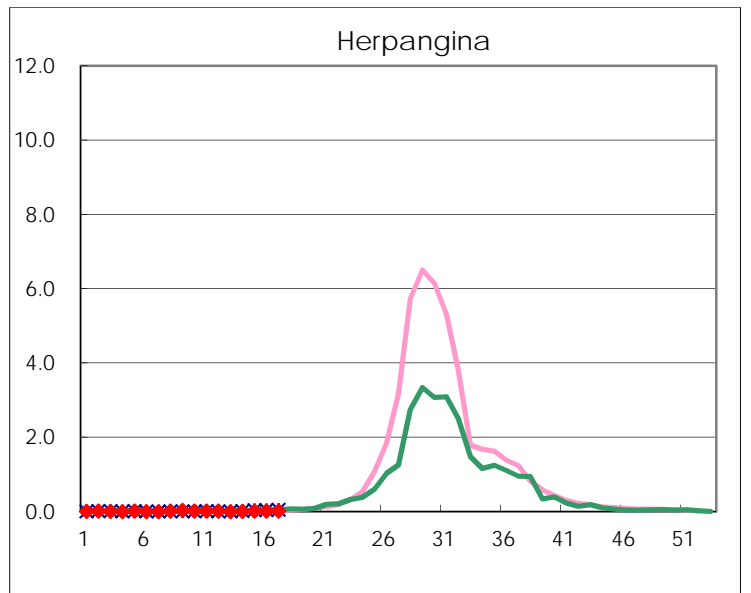
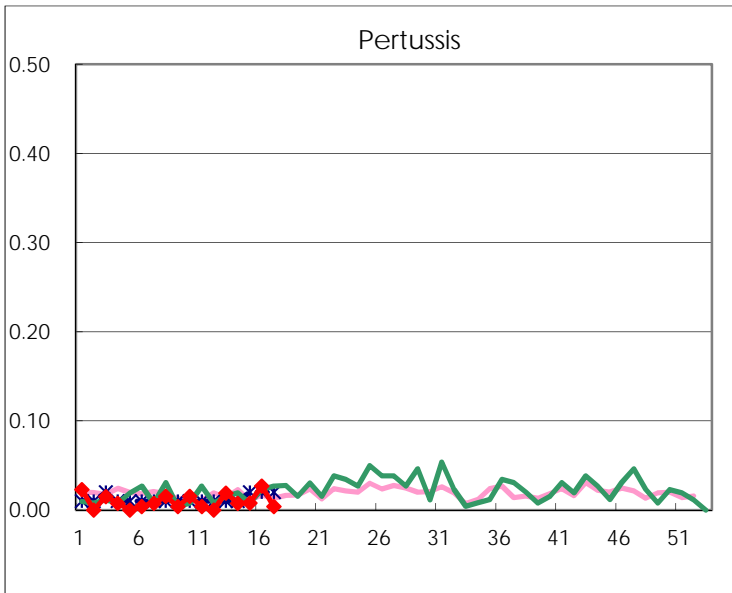
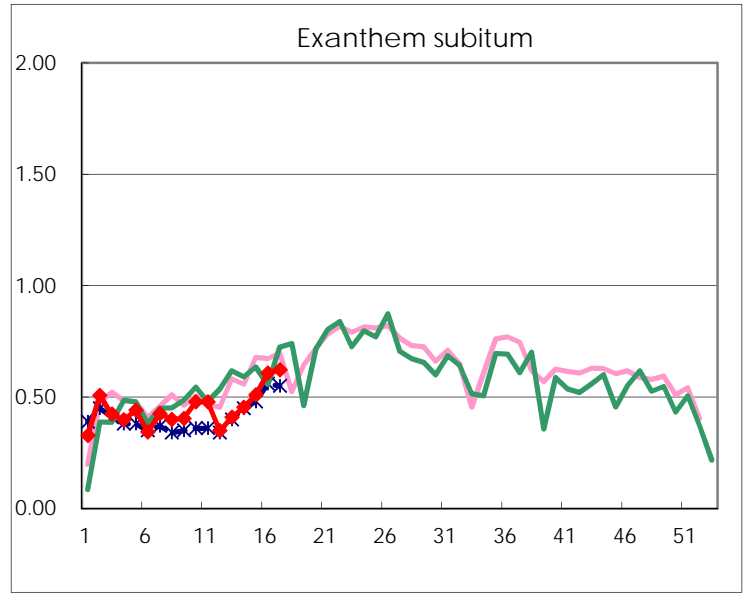
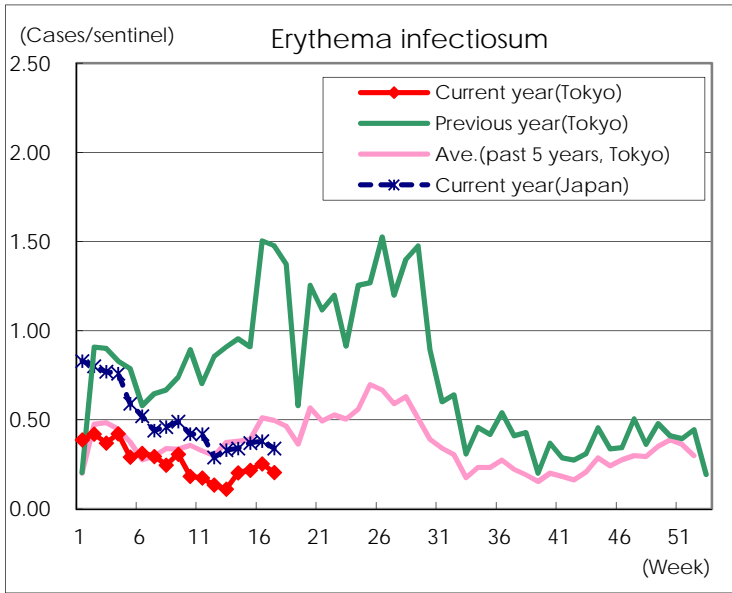
Number of patients with the diseases to be reported
by the designated clinics and hospitals

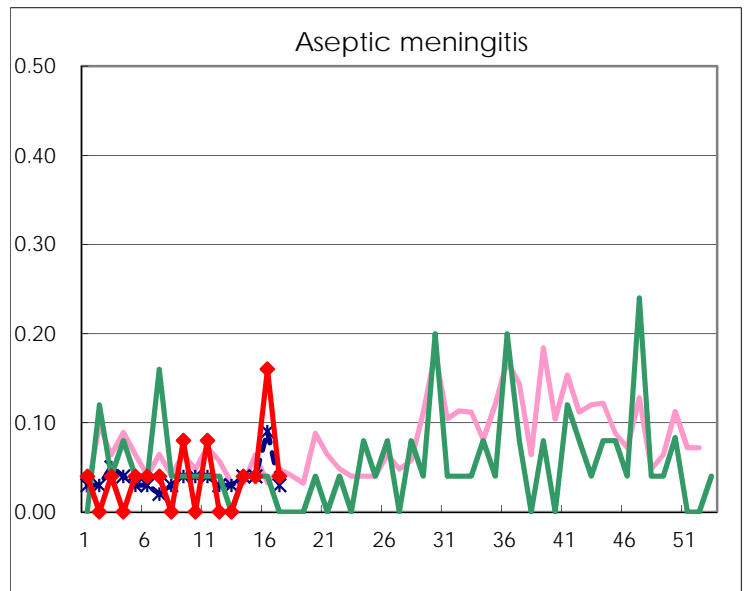
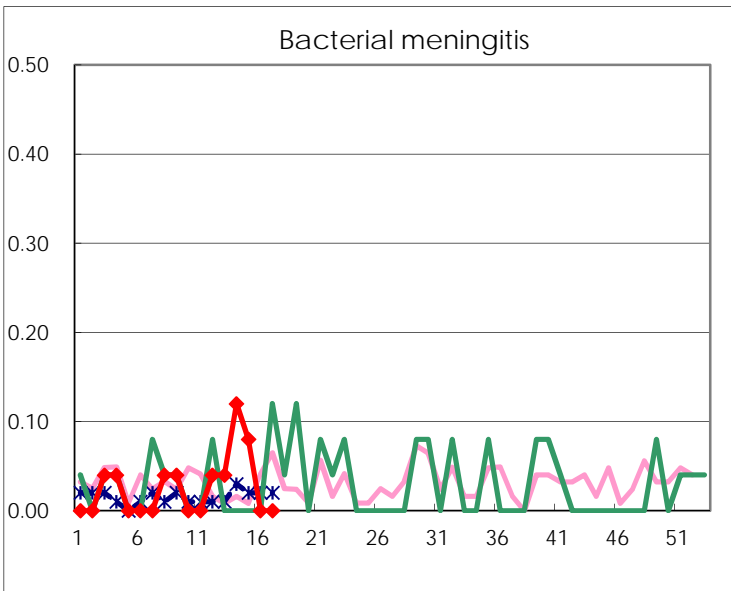
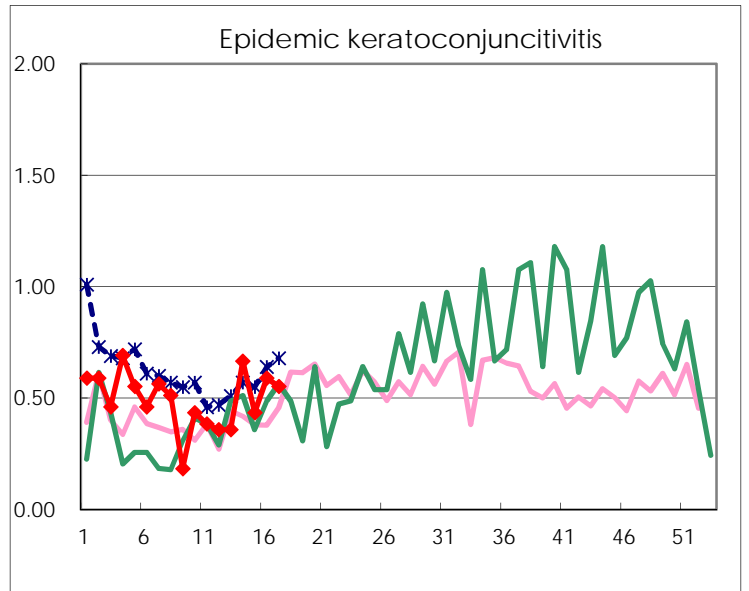
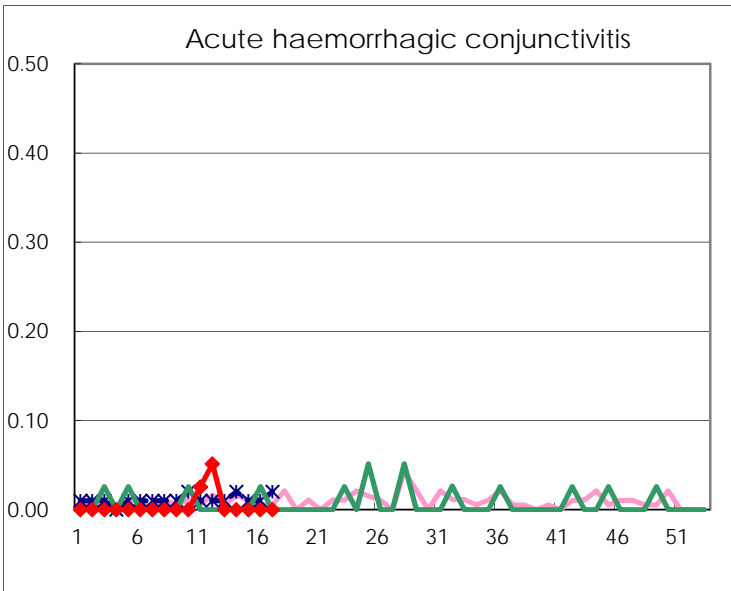
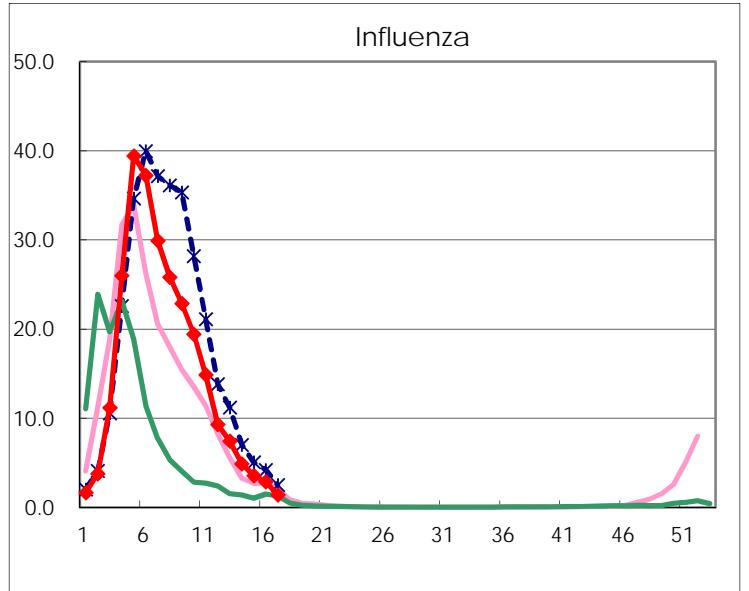
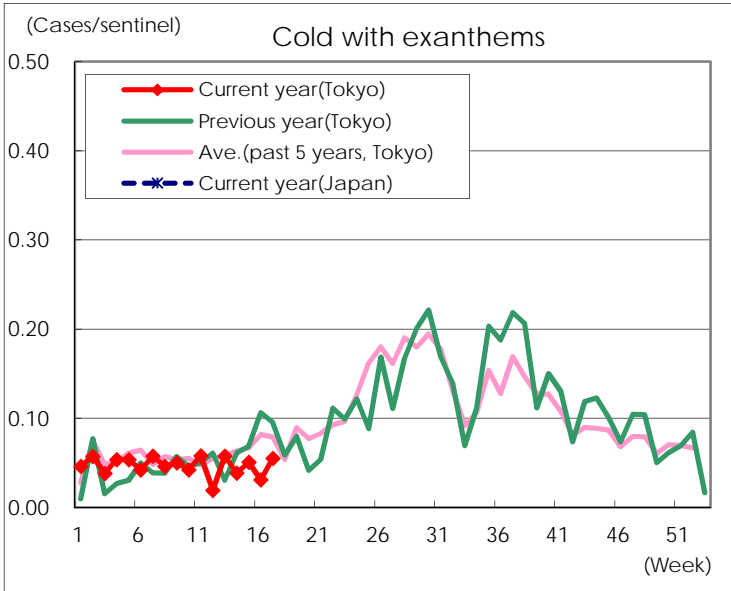
Diseases	Tokyo				
	14th	15th	16th	17th	/sentinel
Respiratory syncytial virus infection	17	34	37	21	0.08
Pharyngoconjunctival fever	55	40	86	117	0.46
Group A streptococcal pharyngitis	516	722	763	715	2.81
Infectious gastroenteritis	1,259	1,527	1,782	1,389	5.47
Chickenpox	108	68	99	87	0.34
Hand, foot, and mouth disease	9	8	22	11	0.04
Erythema infectiosum	53	56	66	52	0.20
Exanthem subitum	118	131	158	158	0.62
Pertussis	2	2	7	1	
Herpangina	2	4	4	5	0.02
Mumps	112	108	112	116	0.46
Kawasaki disease	2	3	3	5	0.02
Cold with exanthems	10	13	8	14	0.06
Influenza	2,028	1,469	1,186	567	1.40
Acute hemorrhagic conjunctivitis					
Epidemic keratoconjunctivitis	26	17	23	21	0.55
Bacterial meningitis	3	2			
Aseptic meningitis	1	1	4	1	0.04
Mycoplasma pneumonia	5	8	3	10	0.40
Chlamydial pneumonia (excluding psittacosis)	1			1	0.04
Infectious gastroenteritis (only by Rotavirus)	5	12	7	9	0.36
Influenza-Associated Hospitalizations	12	6	8	5	0.20

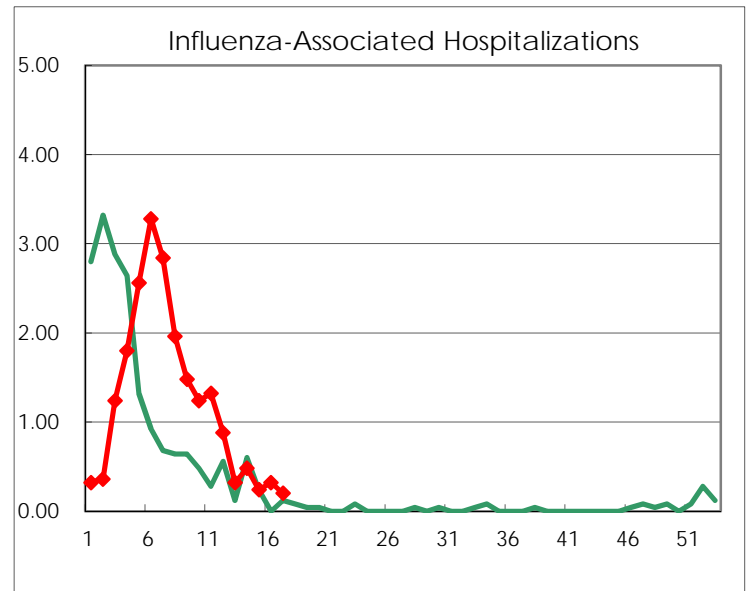
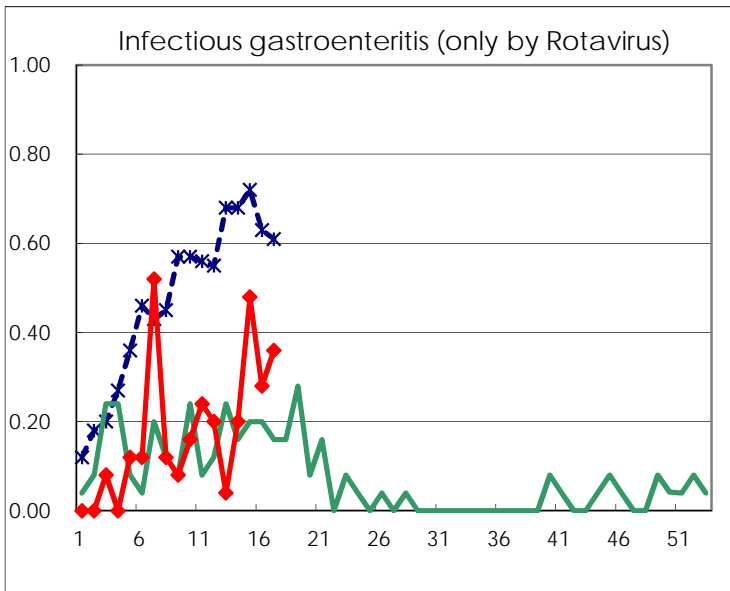
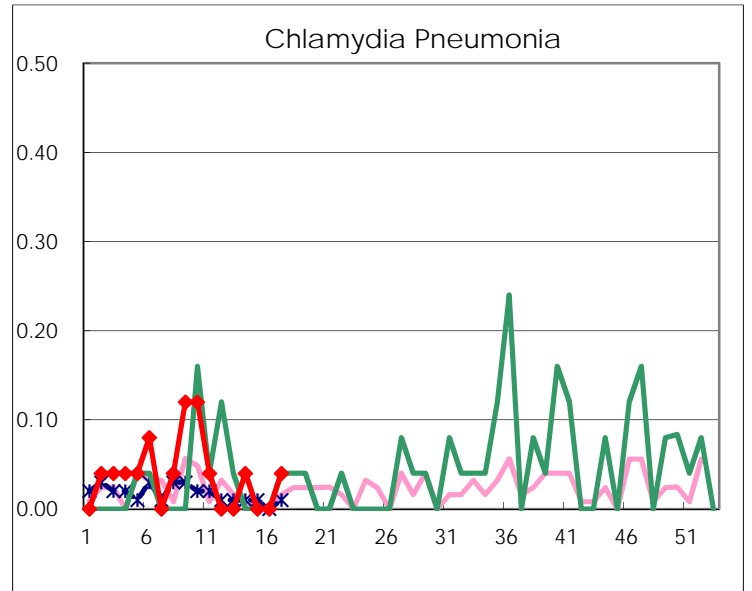
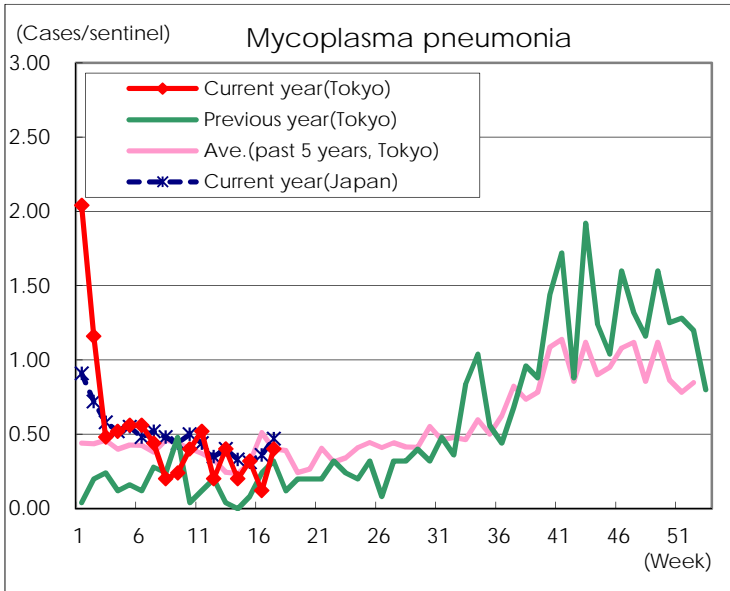
(Blank means 0.)

Disease Trend Graph (weekly reported cases per sentinel in comparison)









Number of sentinel facilities for weekly reporting		
Types of sentinels	Number of sentinels	Sentinels having reported
Pediatric	264	254
Influenza	419	405
Ophthalmic	39	38
Specially-designated	25	25