

12 May 2016 / Number 18

Surveillance System in Tokyo, Japan

The infectious diseases which all physicians must report

All physicians must report to health centers the incidence of the diseases which are shown at page one. Health centers electronically report the individual cases to Tokyo Metropolitan Infectious Disease Surveillance Center.

The infectious diseases required to be reported by the sentinels

The numbers of patients who visit the sentinel clinics or hospitals during a week are reported to health centers in Tokyo. And they electronically report the numbers to Tokyo Metropolitan Infectious Disease Surveillance Center. We have about 500 sentinel clinics and hospitals in Tokyo.

Tokyo Metropolitan Institute of Public Health

TEL:81-3-3363-3213 FAX:81-3-5332-7365

e-mail:www@tokyo-eiken.go.jp

URL:idsc.tokyo-eiken.go.jp/

Number of patients with the diseases which all physicians must report

Category	Diseases	Tokyo					Japan	
		15th	16th	17th	18th	Cum 2016	18th	Cum 2016
I	Ebola hemorrhagic fever							
	Crimean-Congo hemorrhagic fever							
	Smallpox							
	South American hemorrhagic fever							
	Plague							
	Marburg disease							
	Lassa fever							
II	Acute poliomyelitis							
	Tuberculosis	75	69	75	35	1,195	217	7,558
	Diphtheria							
	Severe Acute Respiratory Syndrome(SARS)							
	Middle East Respiratory Syndrome (MERS)							
	Avian influenza H5N1							
	Avian influenza H7N9							
III	Cholera							1
	Shigellosis		2	2		15		44
	Enterohemorrhagic Escherichia coli infection	1	6	3	5	37	20	247
	Typhoid fever	2				9	1	16
	Paratyphoid fever		1			4	1	6
IV	Hepatitis E			1		17	4	146
	West Nile fever							
	Hepatitis A	1	2	1	1	33		130
	Echinococcosis							3
	Yellow fever							
	Psittacosis							1
	Omsk hemorrhagic fever							
	Relapsing fever							1
	Kyasanur forest disease							
	Q fever							
	Rabies							
	Coccidioidomycosis				1	1	1	1
	Monkeypox							
	Zika virus infection							5
	Severe Fever with Thrombocytopenia Syndrome							6
	Hemorrhagic fever with renal syndrome							
	Western equine encephalitis							
	Tick-borne encephalitis							
	Anthrax							
	Chikungunya fever					2		2
	Scrub typhus(Tsutsugamushi disease)						1	51
	Dengue fever	4		3	2	35	5	118
	Eastern equine encephalitis							
	Avian influenza (excluding H5N1 and H7N9)							
	Nipah virus infection							
	Japanese spotted fever						1	20
	Japanese encephalitis							
	Hantavirus pulmonary syndrome							
	Herpes B virus infection							
	Glanders							
	Brucellosis							
	Venezuelan equine encephalitis							
Hendra virus infection								
Epidemic typhus								
Botulism		1			1		1	
Malaria	1	1			6	1	15	
Tularemia								
Lyme disease								
Lyssavirus infection(excluding rabies)								
Rift valley fever								
Melioidosis								
Legionellosis	2		4		32	11	346	
Leptospirosis							3	
Rocky mountain spotted fever								

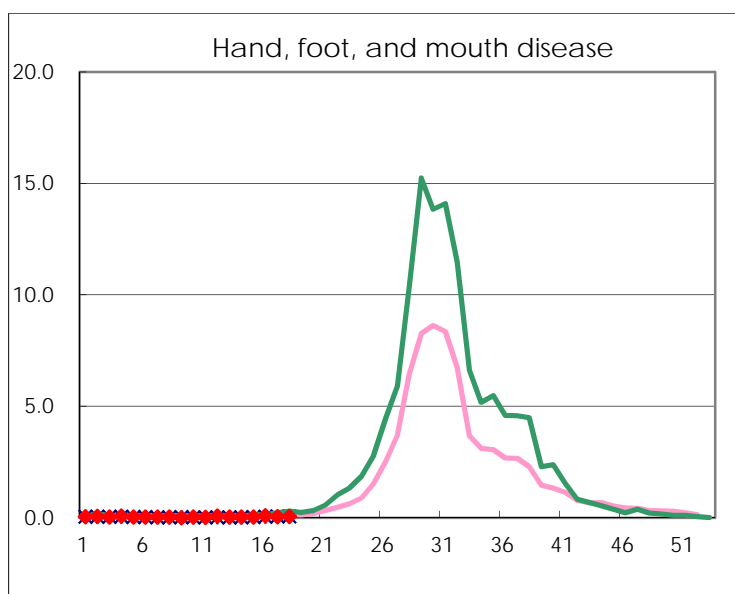
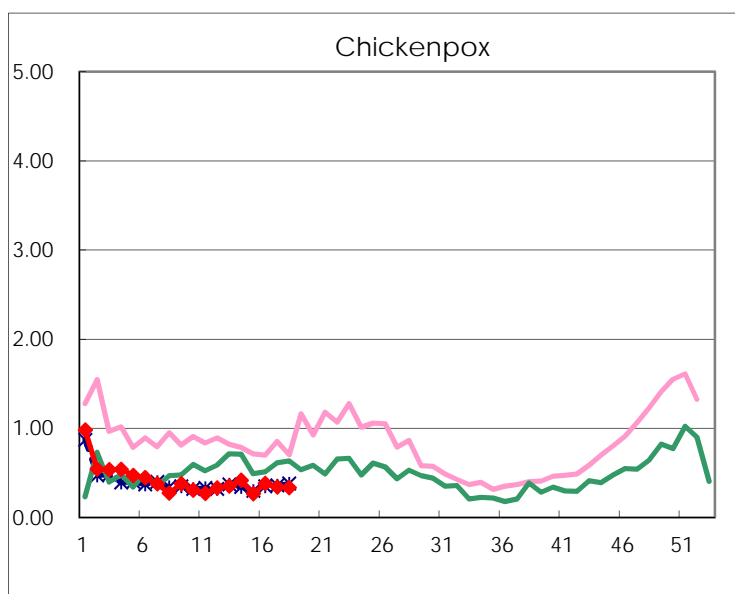
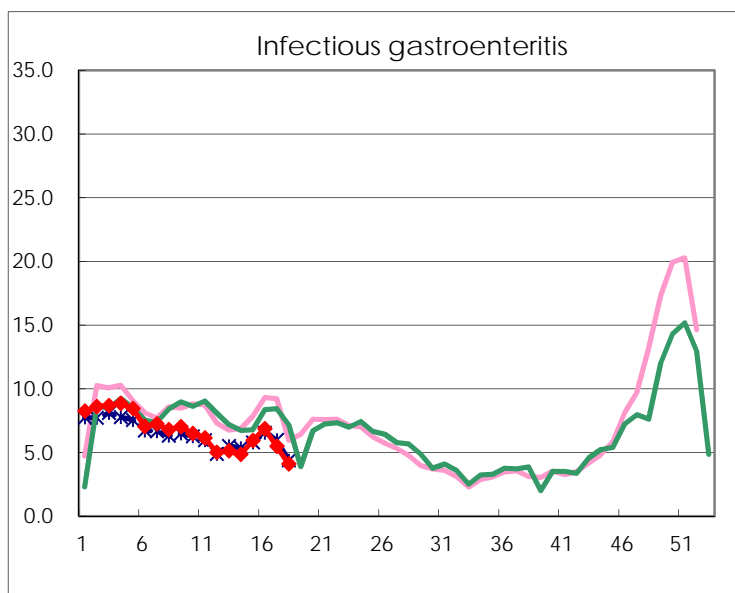
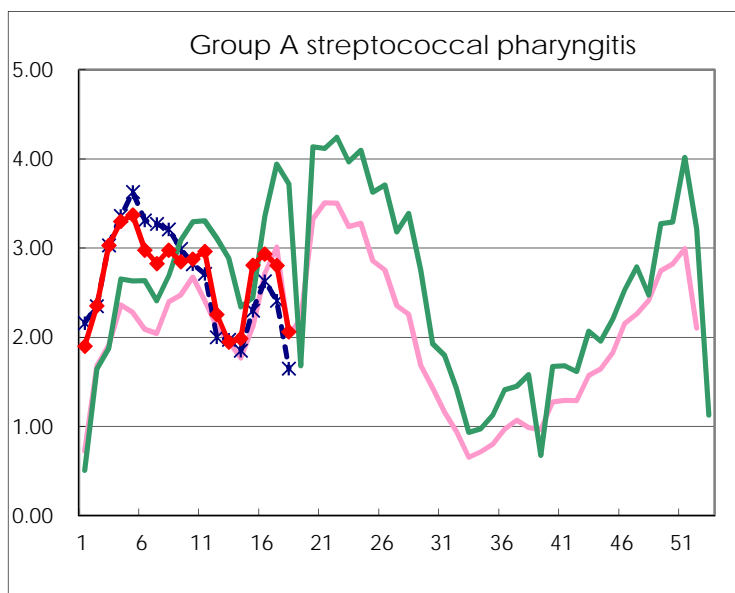
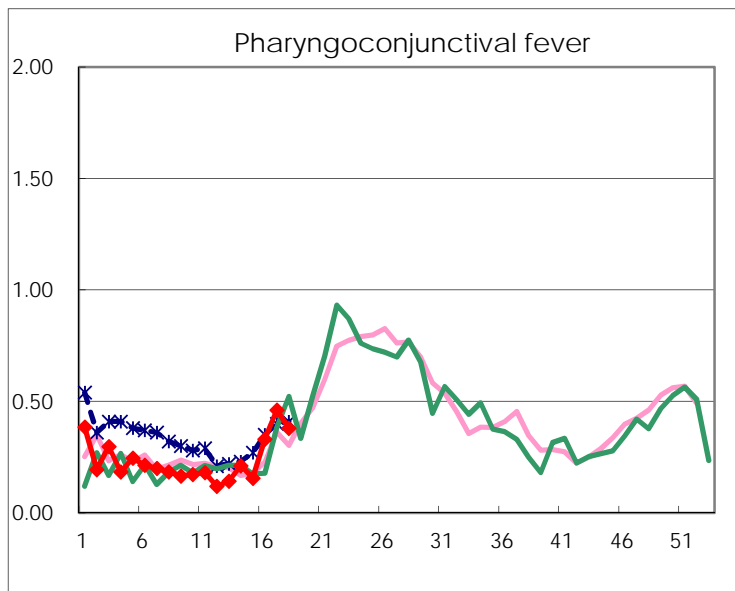
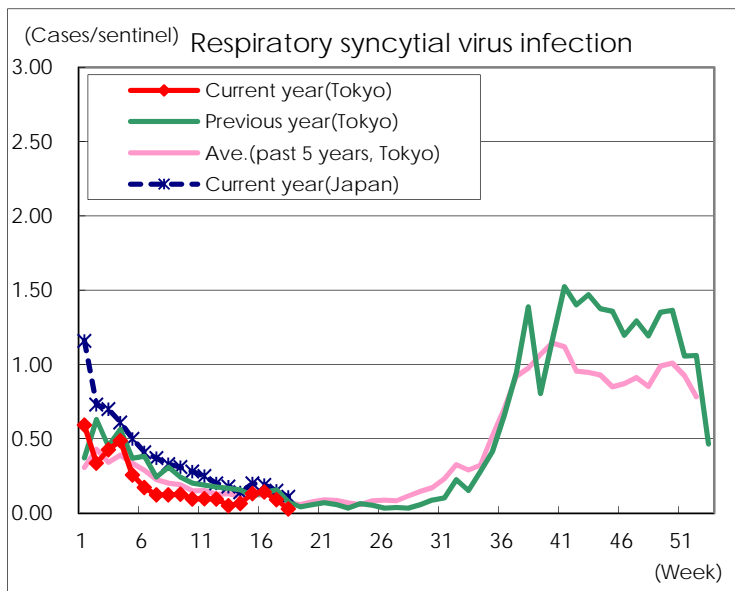
Category	Diseases	Tokyo					Japan	
		15th	16th	17th	18th	Cum 2016	18th	Cum 2016
V	Amebiasis	3	3	6	6	79	5	404
	Viral hepatitis(excluding hepatitis A and E)		2			16	2	78
	CRE infection	8	3	1	4	67	11	444
	Acute encephalitis(excluding JE and WNE)	1	1	1		48	5	365
	Cryptosporidiosis							4
	Creutzfeldt-Jakob disease	1		2		9		65
	Severe invasive streptococcal infections(TSLS)		2			26	4	185
	Acquired immunodeficiency syndrome (AIDS)	13	12	11	3	166	3	477
	Giardiasis	1				6	1	22
	Invasive <i>Haemophilus influenzae</i> disease		1	1		16	6	121
	Invasive meningococcal disease	1				1	1	19
	Invasive pneumococcal disease	13	9	10	7	153	36	1,110
	Varicella (limited to hospitalized case)	1	1	1	2	17		89
	Congenital rubella syndrome							
	Syphilis	18	42	26	13	542	24	1,223
	Disseminated cryptococcosis	1	1			9	1	41
	Tetanus		1	1		2	2	29
	Vancomycin-resistant <i>S. aureus</i> infection							
	Vancomycin-resistant <i>Enterococcus</i> infection							12
	Rubella	1	3			8	2	39
Measles					1	1	6	
MDRA infection							14	

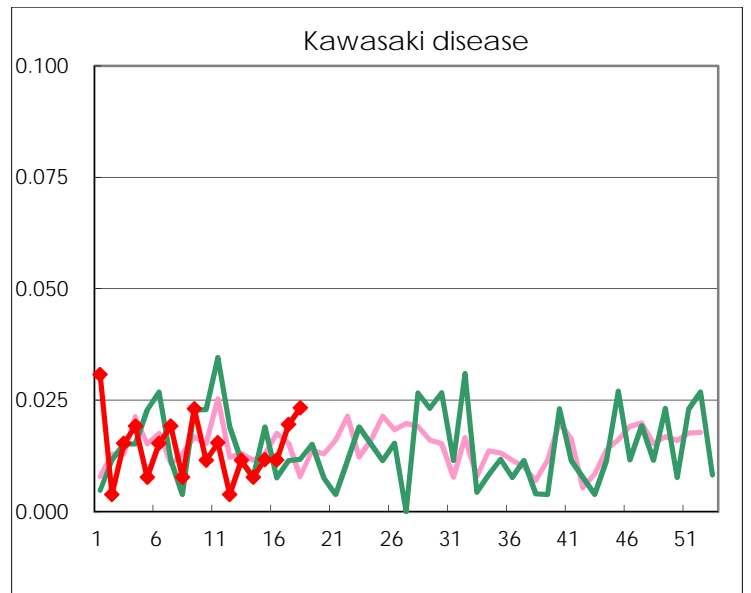
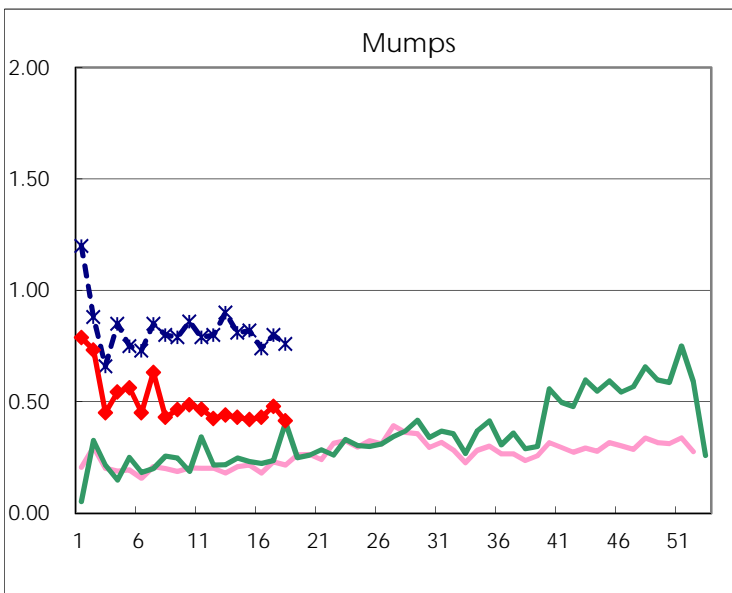
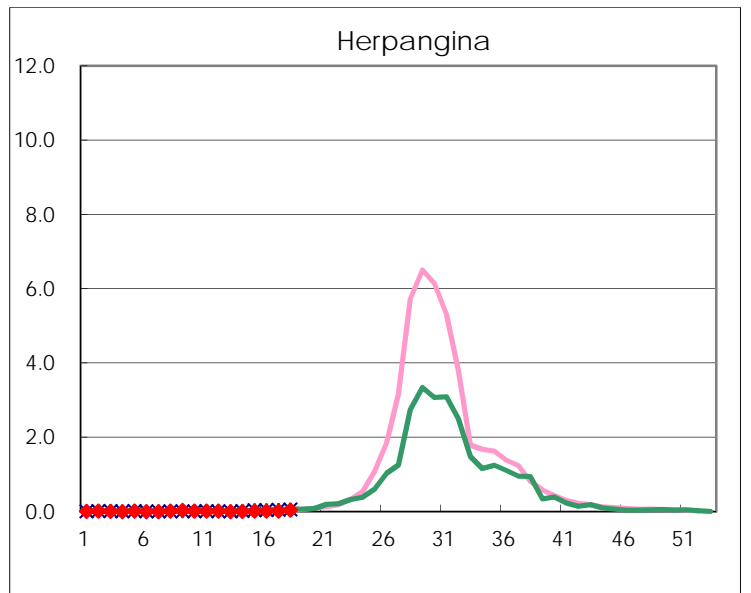
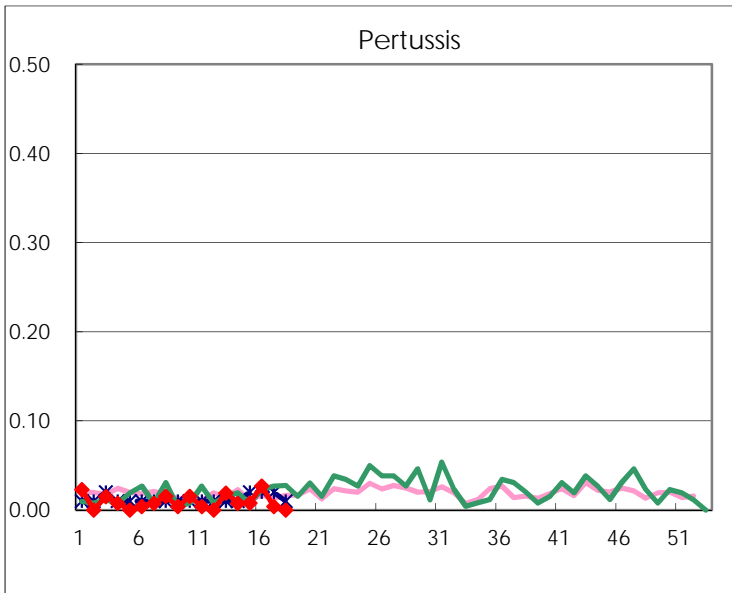
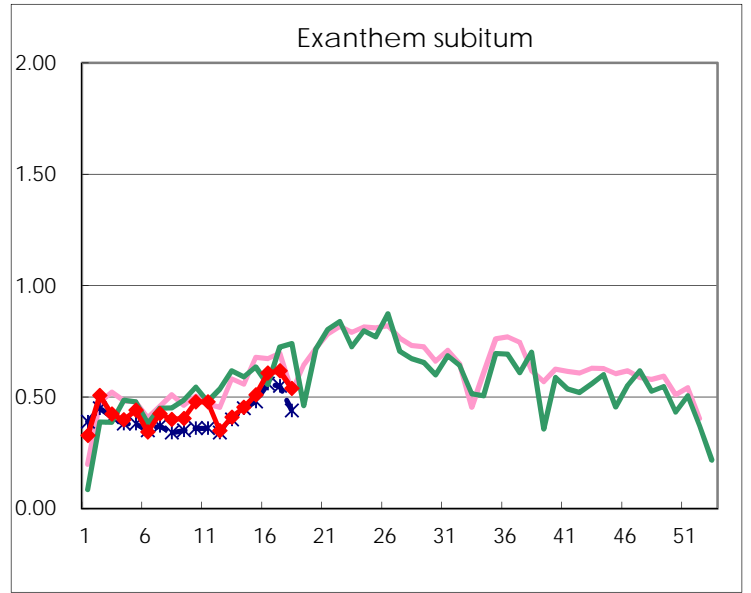
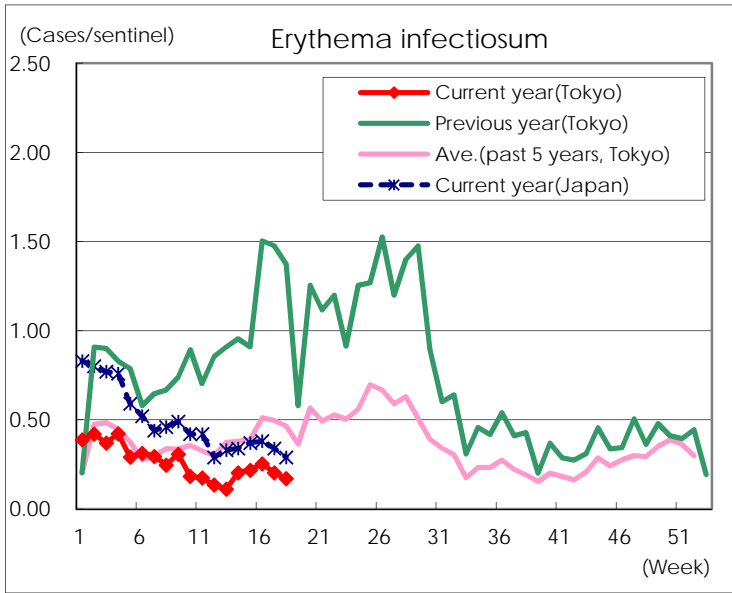
Number of patients with the diseases to be reported
by the designated clinics and hospitals

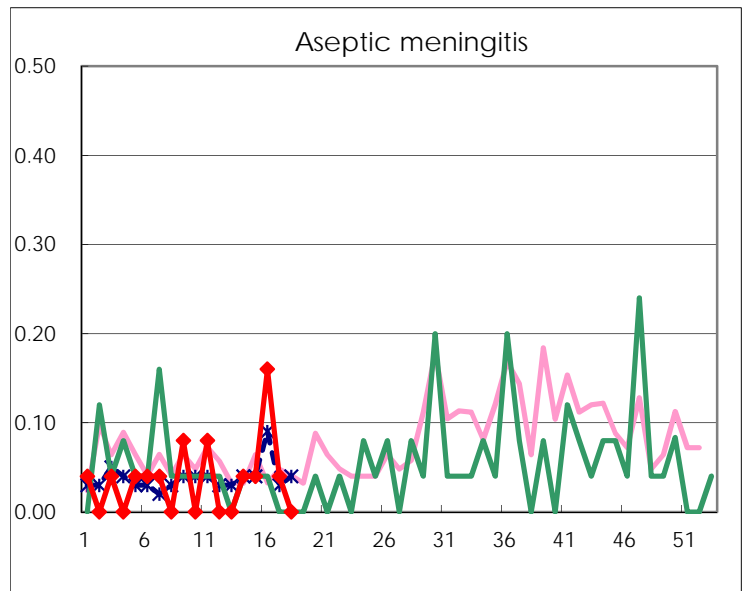
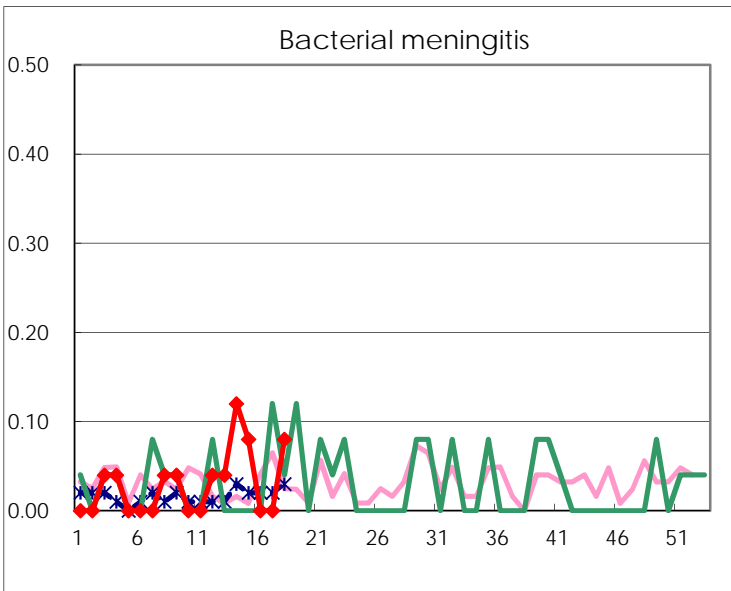
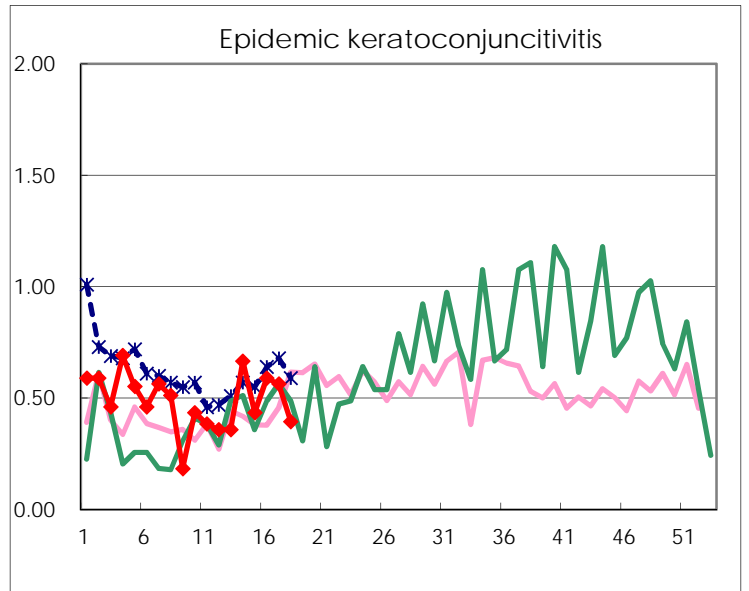
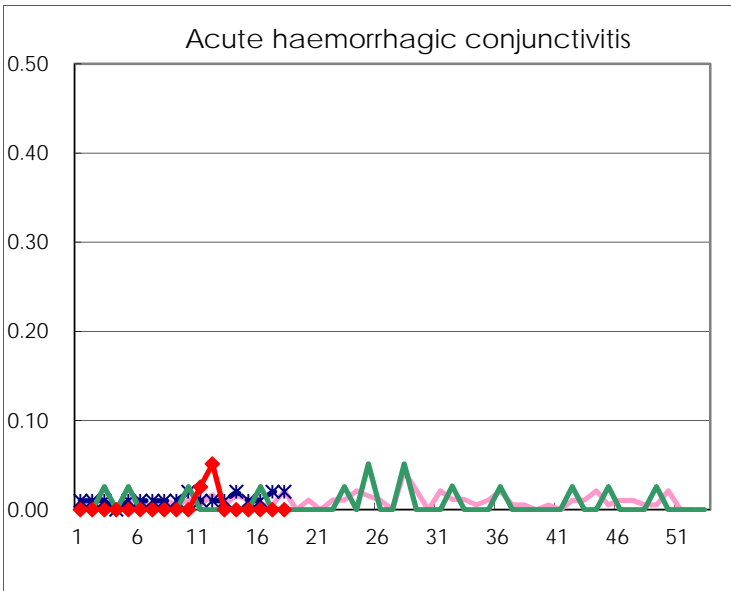
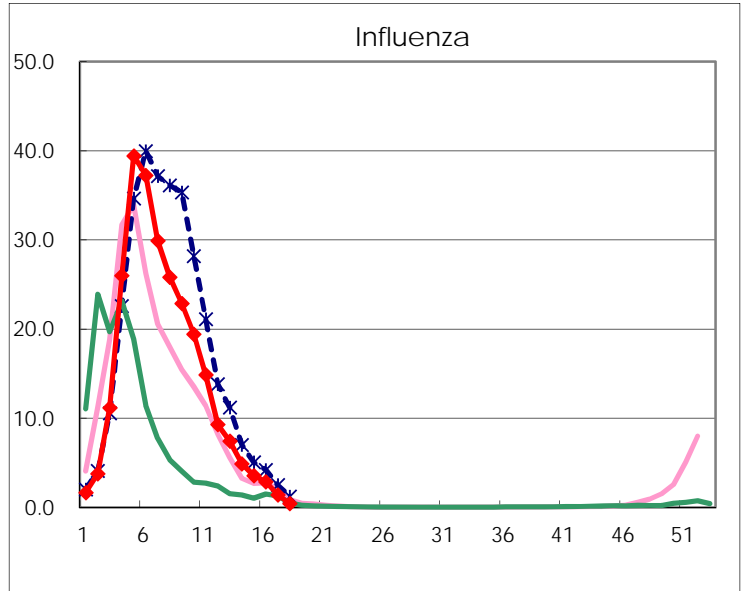
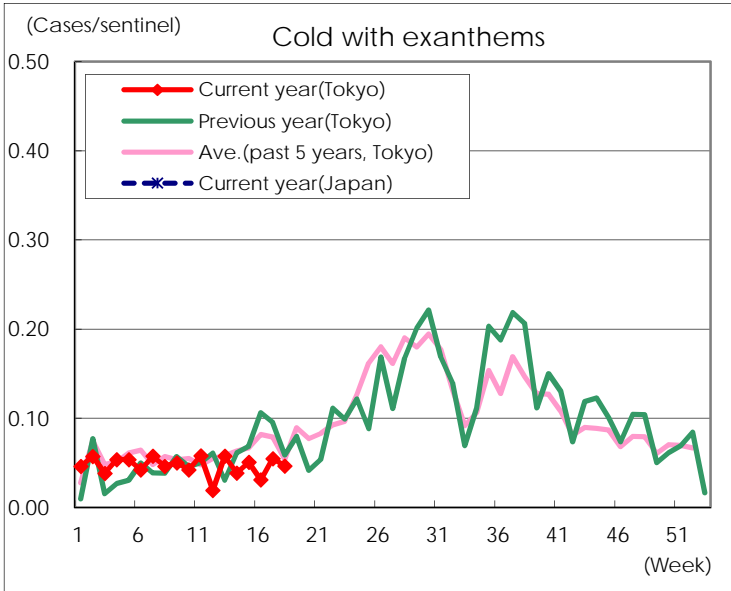
Diseases	Tokyo				
	15th	16th	17th	18th	/sentinel
Respiratory syncytial virus infection	34	37	23	7	0.03
Pharyngoconjunctival fever	40	86	118	98	0.38
Group A streptococcal pharyngitis	722	763	718	532	2.06
Infectious gastroenteritis	1,527	1,782	1,403	1,057	4.10
Chickenpox	68	99	87	86	0.33
Hand, foot, and mouth disease	8	22	11	14	0.05
Erythema infectiosum	56	66	52	44	0.17
Exanthem subitum	131	158	158	139	0.54
Pertussis	2	7	1		
Herpangina	4	4	5	11	0.04
Mumps	108	112	123	107	0.41
Kawasaki disease	3	3	5	6	0.02
Cold with exanthems	13	8	14	12	0.05
Influenza	1,469	1,186	581	176	0.43
Acute hemorrhagic conjunctivitis					
Epidemic keratoconjunctivitis	17	23	22	15	0.39
Bacterial meningitis	2			2	0.08
Aseptic meningitis	1	4	1		
<i>Mycoplasma pneumoniae</i>	8	3	10	3	0.12
<i>Chlamydial pneumoniae</i> (excluding psittacosis)			1		
Infectious gastroenteritis (only by Rotavirus)	12	7	9	2	0.08
Influenza-Associated Hospitalizations	6	8	5	4	0.16

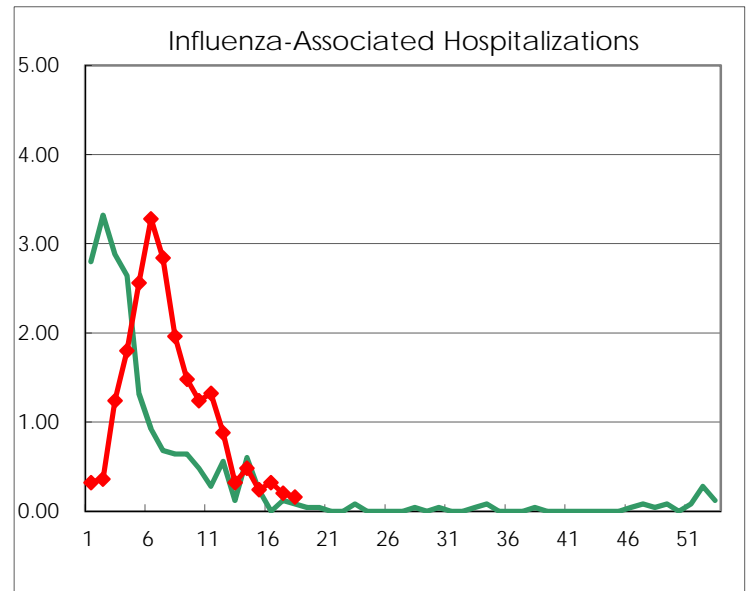
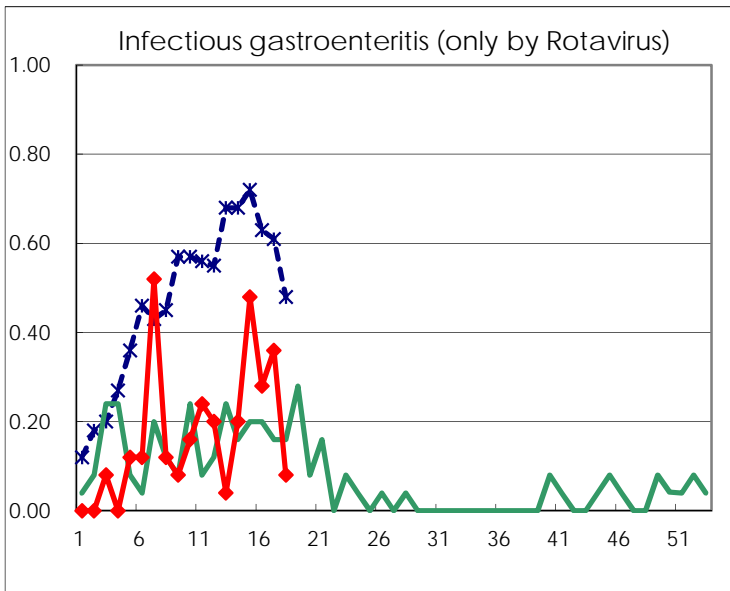
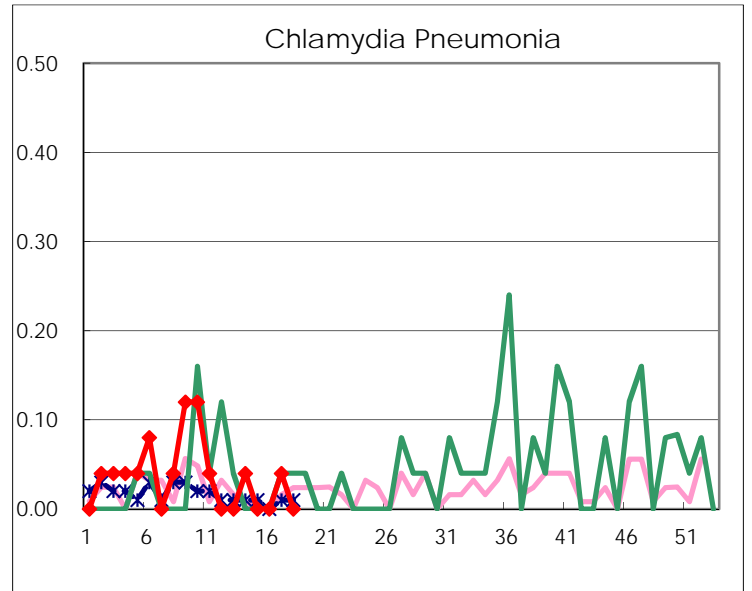
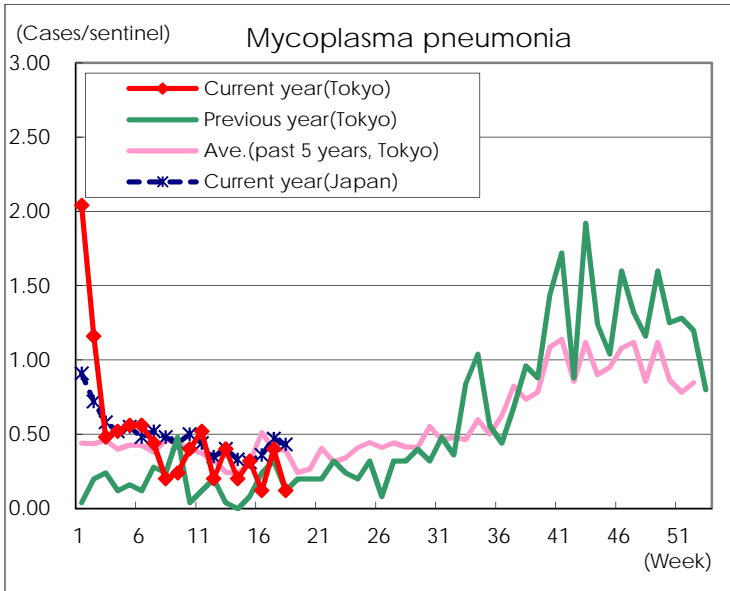
(Blank means 0.)

Disease Trend Graph (weekly reported cases per sentinel in comparison)









Number of sentinel facilities for weekly reporting		
Types of sentinels	Number of sentinels	Sentinels having reported
Pediatric	264	258
Influenza	419	411
Ophthalmic	39	38
Specially-designated	25	25